



Electronic Service Manuals

This electronic document is provided as a service to our customers. We do not create the contents of the information contained in this document. Should you have detailed questions pertaining to the information contained in this document, you may contact Michco, or the manufacturer which provided the original information in this electronic deliverable. Michco's only part in this electronic deliverable was the electronic assembly process. By providing this manual on line we are not guaranteeing parts availability.

You may contact Michco through the following methods:

Phone (517) 484-9312 or (800) 331-3339

2011 N. High St. -- Lansing, Michigan -- 48906

Fax: (517) 484-9836

Email: CustServe@Michco.com

Web site: www.Michco.Com

Parts Web site: www.FloorMachineParts.Com

Order Parts on Line at:

www.FloorMachineParts.Com

Directly to Parts & Service:

By Email: **Shop@Michco.com**

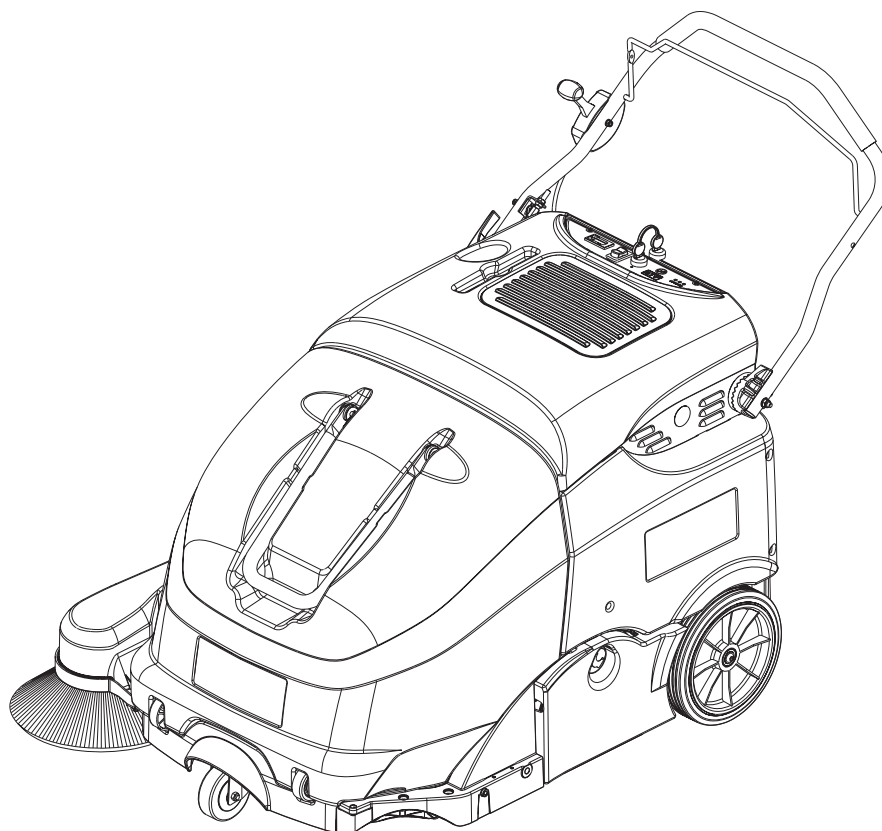
By Fax: (517) 702-2041

By Voice: Use numbers above.

Serving the Cleaning Industry Since 1922

Notice: All copyrighted material remains property of original owners, all trademarks are property of respective owners. Manuals are subject to Manufacturer's reproduction limitations. Originals or reproductions were provided by manufacturers through a request. We make no warranty as to the correctness of information provided in this document and you assume all risk. By placing these manuals on line we are not declaring our corporation to be an manufacturer authorized dealer or provider, please check our web site for authorized manufacturers we represent.

SW900



PARTS LIST

Advance model: 9084112010

TABLE OF CONTENTS

GENERAL VIEW	2
CHASSIS SYSTEM.....	4
FRAME SYSTEM.....	6
COVERS SYSTEM.....	8
CONTROL PANEL SYSTEM.....	10
HANDLE SYSTEM.....	12
TRASMISSION SYSTEM.....	14
WHEELS SYSTEM.....	16
MAIN BROOM SYSTEM.....	18
MAIN BROOM SYSTEM.....	19
RIGHT BROOM.....	20
LEFT BROOM (OPTIONAL).....	22
FILTER SYSTEM.....	24
FILTER SHAKER MANUAL.....	26
HOPPER SYSTEM.....	28
ELECTRICAL SYSTEM.....	30
WIRING DIAGRAM.....	32
RECOMMENDED PARTS.....	34
OPTIONAL.....	35

WHEN ORDERING PARTS

- * Use the part numbers from the "Ref. No." columns in this parts list. If the "Ref. No." column is blank; look under the "Kit" column to identify which kit contains the part in question, then use the kit callout,
- * Specify the model and serial number of the machine.
- * Use the space below to record the model and serial number for future reference.

Model

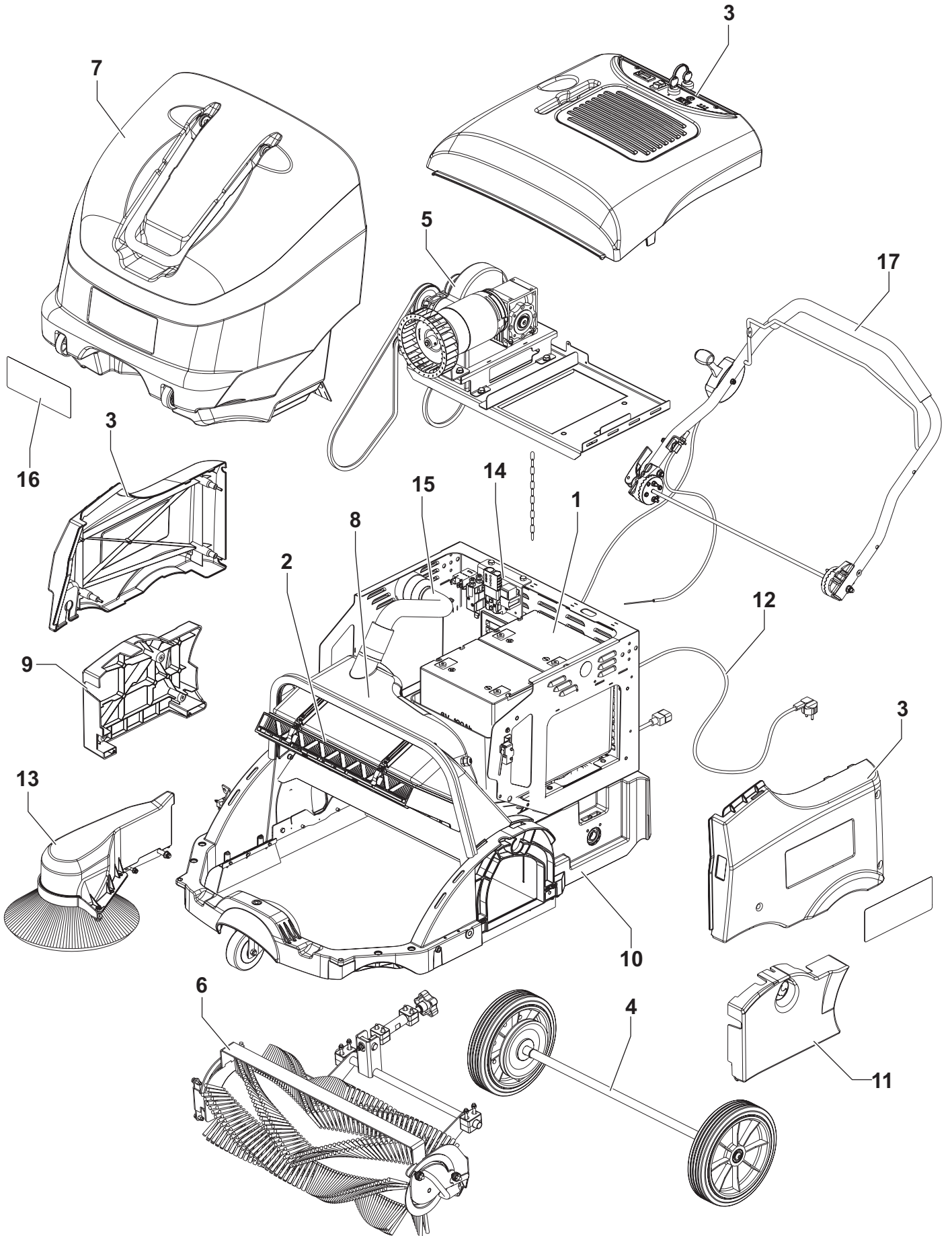
Serial No.

* = Optional

= Modified item No. or New item No.

[] = Not shown

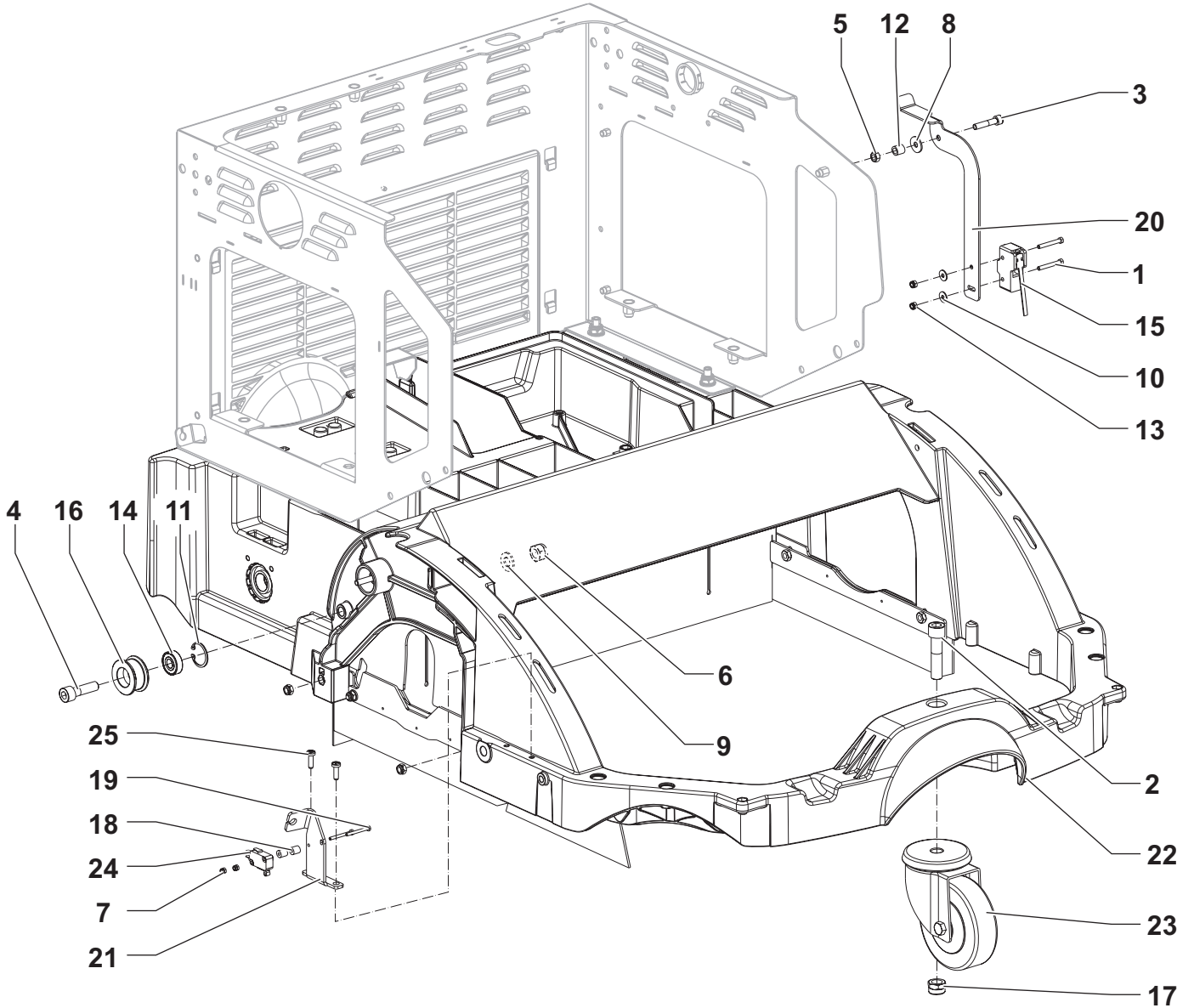
GENERAL VIEW



GENERAL VIEW

ITEM	REF. NO.	QTY	DESCRIPTION
1 *	80564500	2	BATT. 6V-180AH WET TUBULAR MONOBLOC
1 *	80564600	1	BATT. 12V-110AH WET TUBULAR MONOBLOC
1 *	80564000	2	BATT. 6V-180AH GEL MONOBLOC
1 *	80564400	1	BATT. 12V-105AH GEL MONOBLOC
2	-	1	FILTER ASSEMBLY
3	-	1	COVERS PROTECTION ASSEMBLY
4	-	1	WHEELS TRACTION ASSEMBLY
5	-	1	TRANSMISSION ASSEMBLY
6	-	1	CENTRAL BROOM ASSEMBLY
7	-	1	HOPPER ASSEMBLY
8	-	1	SHAKER ELECTRIC FILTER ASSEMBLY
9	-	1	HATCH RIGHT ASSEMBLY
10	-	1	CHASSIS ASSEMBLY
11	-	1	HATCH LEFT ASSEMBLY
12	-	1	BATTERY CHARGER ASSEMBLY
13	-	1	BROOM RIGHT SIDE ASSEMBLY
14	-	1	WIRING SYSTEM ASSEMBLY
15	-	1	WET BY-PASS ASSEMBLY
16	1465459000	1	DECALS SW900 33 KIT
17	-	1	HANDLE BAR ASSEMBLY

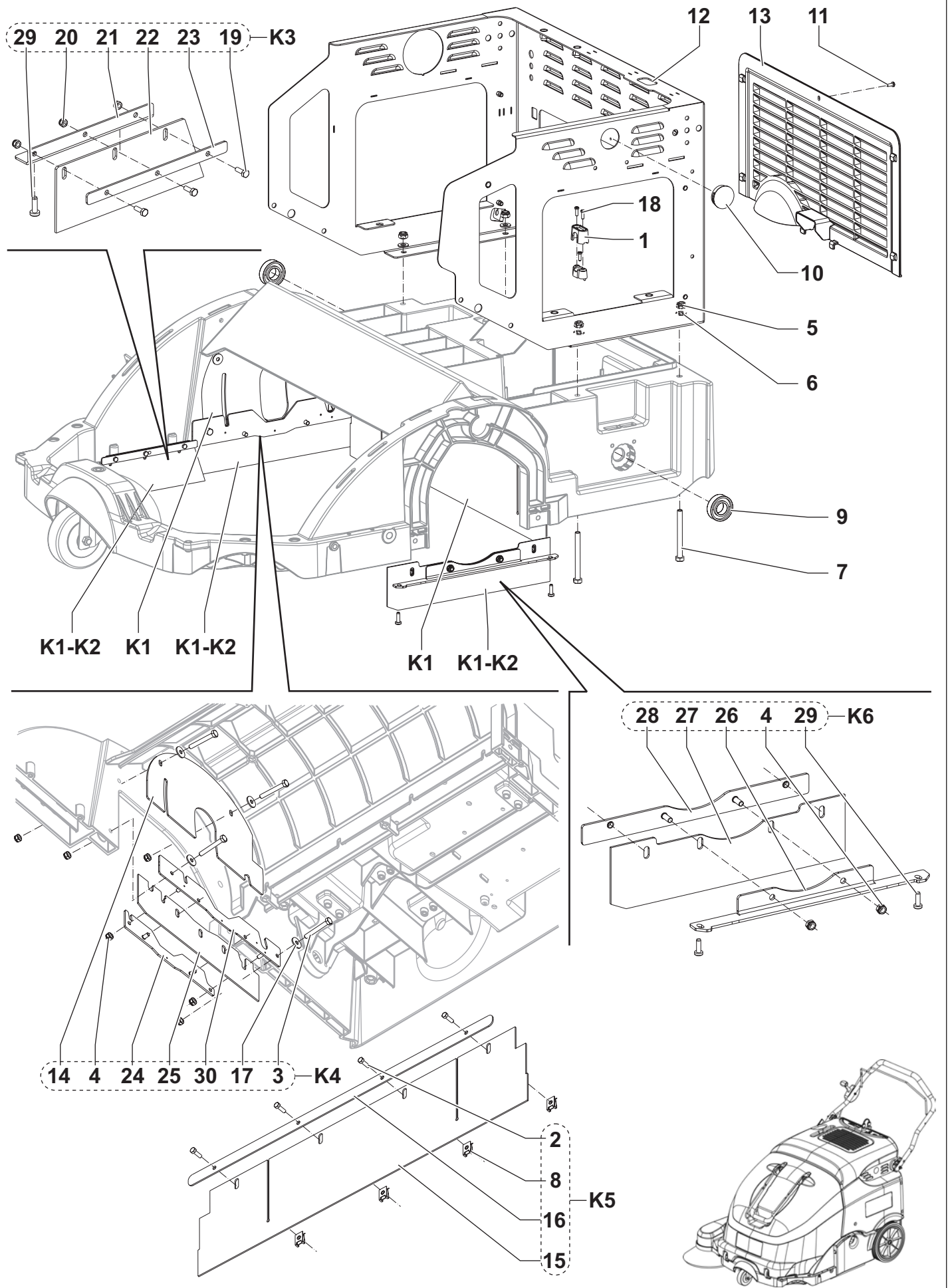
CHASSIS SYSTEM



CHASSIS SYSTEM

KIT	ITEM	REF. NO.	QTY	DESCRIPTION
K1	1		2	SCREW M4X30 UNI5739
K1	2		1	SCREW M12X50 UNI5931 SS
K1	3		1	SCREW M6X30 UNI5931
K1	4		1	SCREW M10X35 UNI5931
K1	5		1	NUT SELF L. M6 UNI7474
K1	6		1	NUT SELF L. M10 UNI7473
K1	7		2	NUT SELF L. M3 UNI7474
K1	8		1	WASHER 6X18 UNI6592
K1	9		1	WASHER M10 UNI6592
K1	10		2	WASHER 4X12 UNI6593
K1	11		1	RING D 26 UNI7437
K1	12		1	SPACER 6.5X10X10
K1	13		2	NUT SELF L. M4 UNI7474
K1	14		1	BALL BEARING 6000 2RS
	15	145 9679 000	1	MICROSWITCH 10A 250V
K1	16		1	ROLLER BELT TENSIONER
K1	17		1	NUT SELF L. M12 UNI7474
K1	18		2	SPACER 3X8X9
K1	19		2	SCREW M3X30 UNI5737
	20	1464998000	1	BRACKET FOR CONTAINER-COVER SWITCH
	21	1465013000	1	SUPPORT RIGHT SIDE BROOM SWITCH
	22	1465015000	1	CHASSIS
	23	909 6602 000	1	WHEEL CASTOR
	24	909 6677 000	1	MICROSWITCH
K1	25		2	SCREW CYL HD 5X16 SELF L.
	[K1]	1465461000	1	HARDWARE CHASSIS KIT

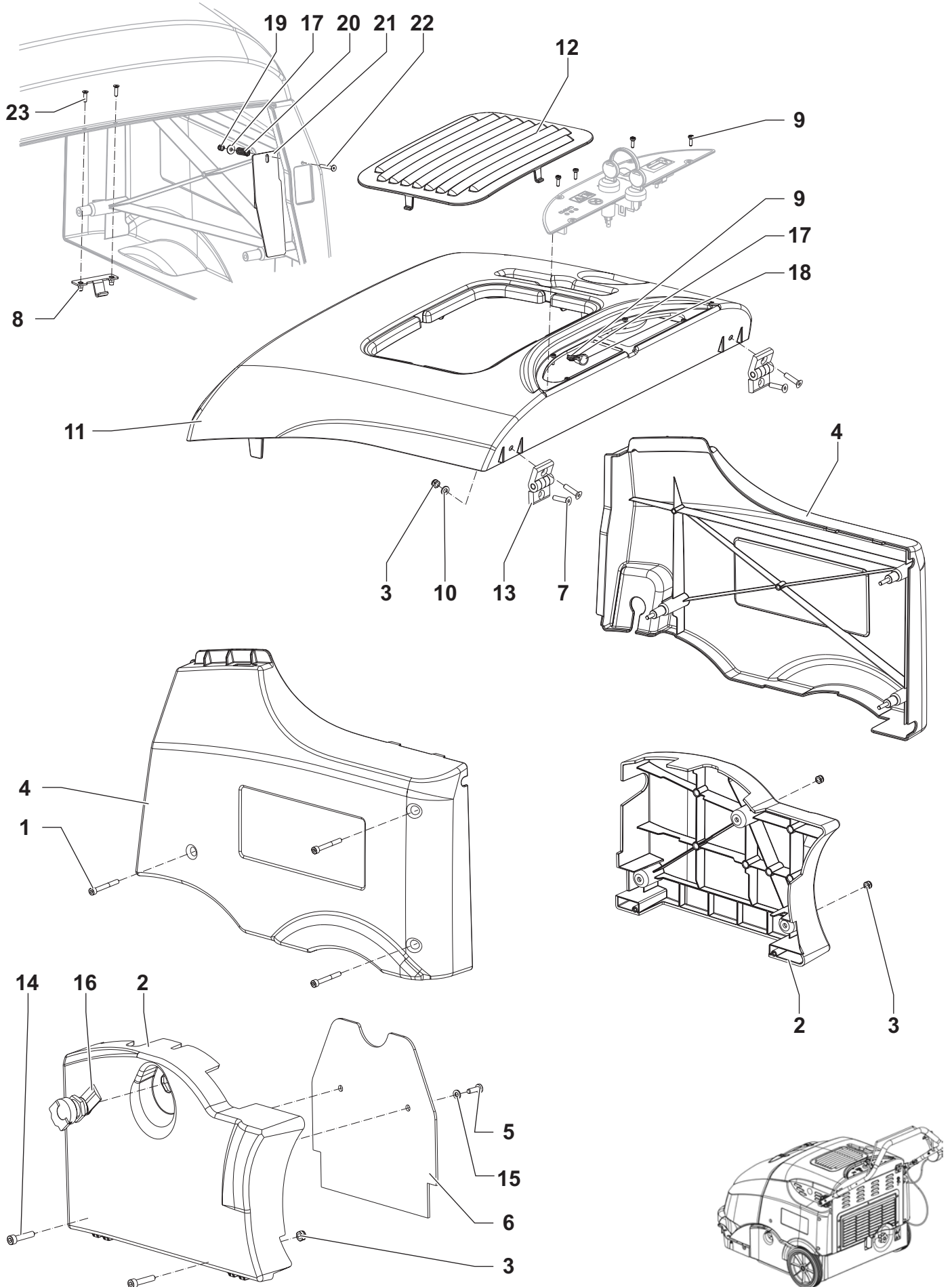
FRAME SYSTEM



FRAME SYSTEM

KIT	ITEM	REF. NO.	QTY	DESCRIPTION
K7	1		1	CAP BRACKET
K5-7	2		4	SCREW M5X16 UNI5739
K4-7	3		4	SCREW M6X45 UNI5739
K4-7	4		6	NUT SELF L. M6 UNI7474
K7	5		4	NUT SELF L. M8 UNI7474
K7	6		4	WASHER M8 UNI6592
K7	7		4	SCREW M8X75 UNI5739
K5-7	8		4	CLIP FOR SCREW
K7	9		2	BEARING BALL 6004 2RS
	10	145 9835 000	1	CAP D.38.1
K7	11		1	SCREW THREAD ROLLING M4X12
	12	1464654000	1	CHASSIS REAR
	13	1464655000	1	GRID REAR VENTING
K1-4	14		1	PROTECTION RUBBER RIGHT SIDE
K1-5	15		1	SKIRT, REAR
K5-7	16		1	PLATE REAR FLAP
K4-7	17		2	WASHER 6X18 UNI6592
K7	18		3	SCREW 3.5X12
K3-7	19		3	SCREW M4X12 UNI5739
K3	20		3	NUT SELF L. M4 UNI7474
K3	21		1	SUPPORT FOR RECYCLING SKIRT
K1-3	22		1	SKIRT RECYCLING
K3	23		1	PLATE FOR RECYCLING SKIRT
K4	24		1	PLATE FOR RIGHT SKIRT EXTERNAL
K1-4	25		1	SKIRT RIGHT SIDE
K6	26		1	PLATE FOR LEFT SKIRT EXTERNAL
K1-6	27		1	SKIRT LEFT SIDE
K6	28		1	PLATE FOR LEFT SKIRT INTERNAL
K3-6	29		4	SCREW CYL HD 5X16 SELF L.
K4	30		1	PLATE FOR RIGHT SKIRT INTERNAL
	K1	1465463000	1	SKIRTS KIT
	K2*	1465541000	1	SKIRTS NO MARKING KIT
	K3	1465595000	1	SKIRTS RECYCLING KIT
	K4	1465596000	1	SKIRT RIGHT SIDE KIT
	K5	1465597000	1	SKIRT REAR KIT
	K6	1465598000	1	SKIRT LEFT SIDE KIT
	[K7]	1465462000	1	HARDWARE REAR CHASSIS KIT

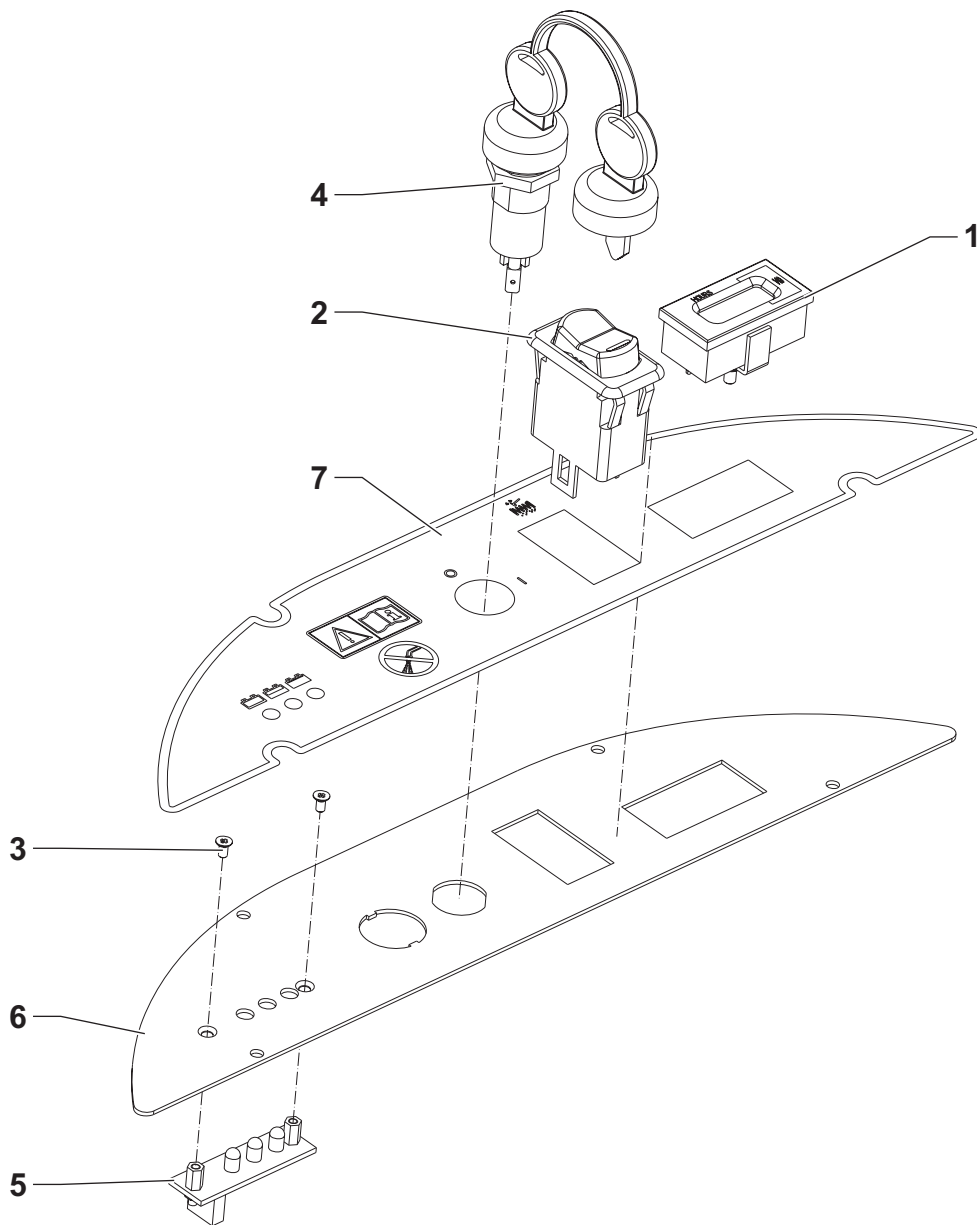
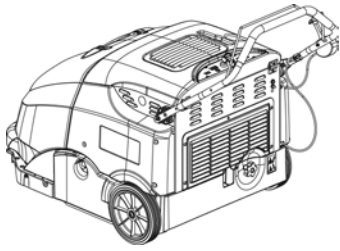
COVERS SYSTEM



COVERS SYSTEM

KIT	ITEM	REF. NO.	QTY	DESCRIPTION
K1	1		6	SCREW M5X35 UNI5931
	2	1465545000	1	COVER UPPER BLACK KIT
K1	3		5	NUT SELF L. M6 UNI7474
	4	1465546000	1	COVERS SIDE GREY KIT
K1	5		2	SCREW CYL HD 5X16 SELF L.
	6	1465104000	1	SKIRT PROTECTION
K1	7		4	EXCHANGE HEAT
	8	1465482000	1	HOOK FOR BONNET CLOSING
K1	9		5	SCREW 3.5X12
K1	10		2	WASHER 6X24X2 UNI6593
	11	1464666000	1	COVER UPPER
	12	1464696000	1	COVER UPPER FOR BATTERY
K1	13		2	HINGE PLASTIC
K1	14		2	SCREW M6X40 UNI5739
K1	15		2	WASHER 5X15 UNI6593
	16	1464896000	1	LATCH WITH FOLD AWAY
K1	17		2	WASHER 4X12 UNI6593
K1	18		1	CLAMP.CABLE
K1	19		1	NUT SELF L. M4 UNI7474
K1	20		1	SPRING
	21	1465527000	1	PROTECTION POLY FOR MICROSWITCH
K1	22		1	SCREW M4X30 UNI5933
K1	23		2	SCREW M4X14 UNI7688
	[K1]	1465464000	1	HARDWARE COVERS KIT

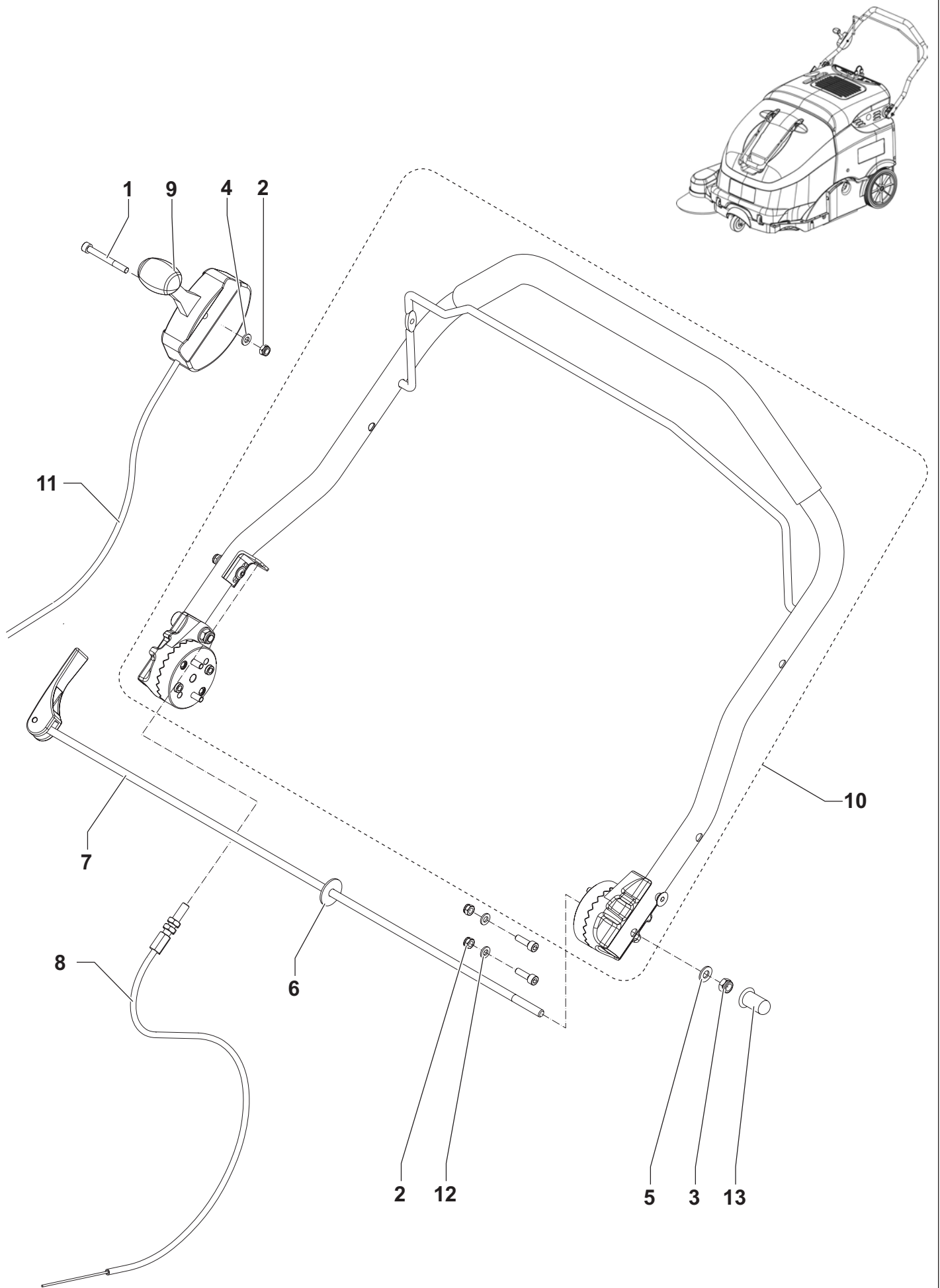
CONTROL PANEL SYSTEM



CONTROL PANEL SYSTEM

KIT	ITEM	REF. NO.	QTY	DESCRIPTION
	1	1465514000	1	COUNTER HOUR 24V KIT
	2	1465465000	1	SWITCH KIT
	3	9095284000	2	SCREW M3X6 UNI7688
	4	146 2888 000	1	SWITCH KEY WITH CAP
	5	146 3073 000	1	BOARD LED
	6	1464765000	1	PANEL CONTROL
	7	1465008000	1	DECAL CONTROL PANEL SW900 84B

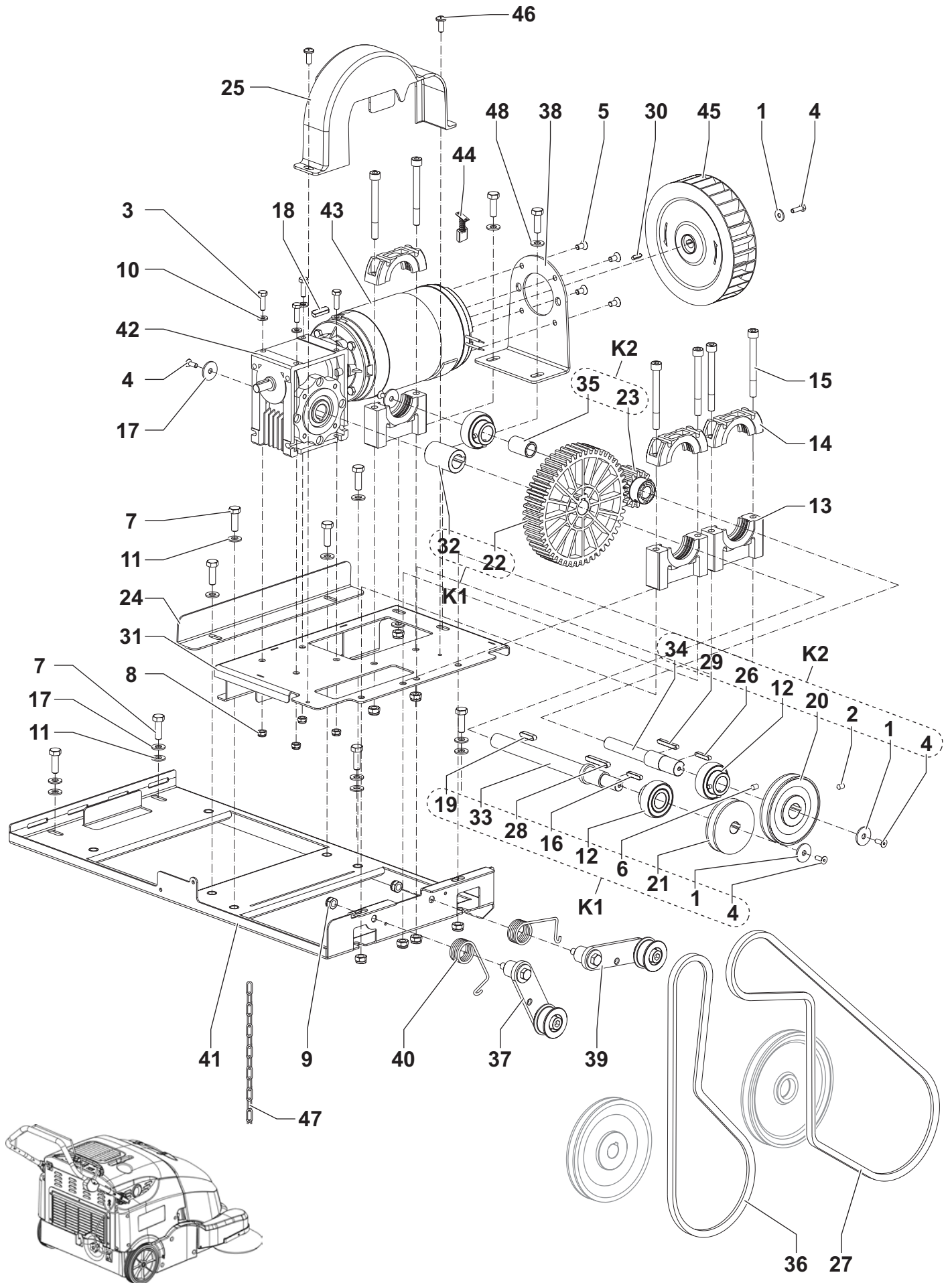
HANDLE SYSTEM



HANDLE SYSTEM

KIT	ITEM	REF. NO.	QTY	DESCRIPTION
K1	1		1	SCREW M6X55 UNI5931 D.6X55
K1	2		6	NUT SELF L. M6 UNI7474
K1	3		1	NUT SELF L. M8 UNI7474
K1	4		1	WASHER M6 UNI6592
K1	5		1	WASHER M8 UNI6592
K1	6		1	WASHER 8X32X2
	7	1464673000	1	LEVER HANDLE RELEASE
	8	1464908000	1	CABLE TRACTION
	9	1465017000	1	LEVER RIGHT SIDE BROOM CONTROL
	10	1465222000	1	HANDLE BAR STRAIGHT
	11	1465532000	1	CABLE FOR SIDE BROOM LEVER
K1	12		4	WASHER 6X18 UNI6592
K1	13		1	CAP PLASTIC
	[K1]	1465466000	1	HARDWARE HANDLE KIT

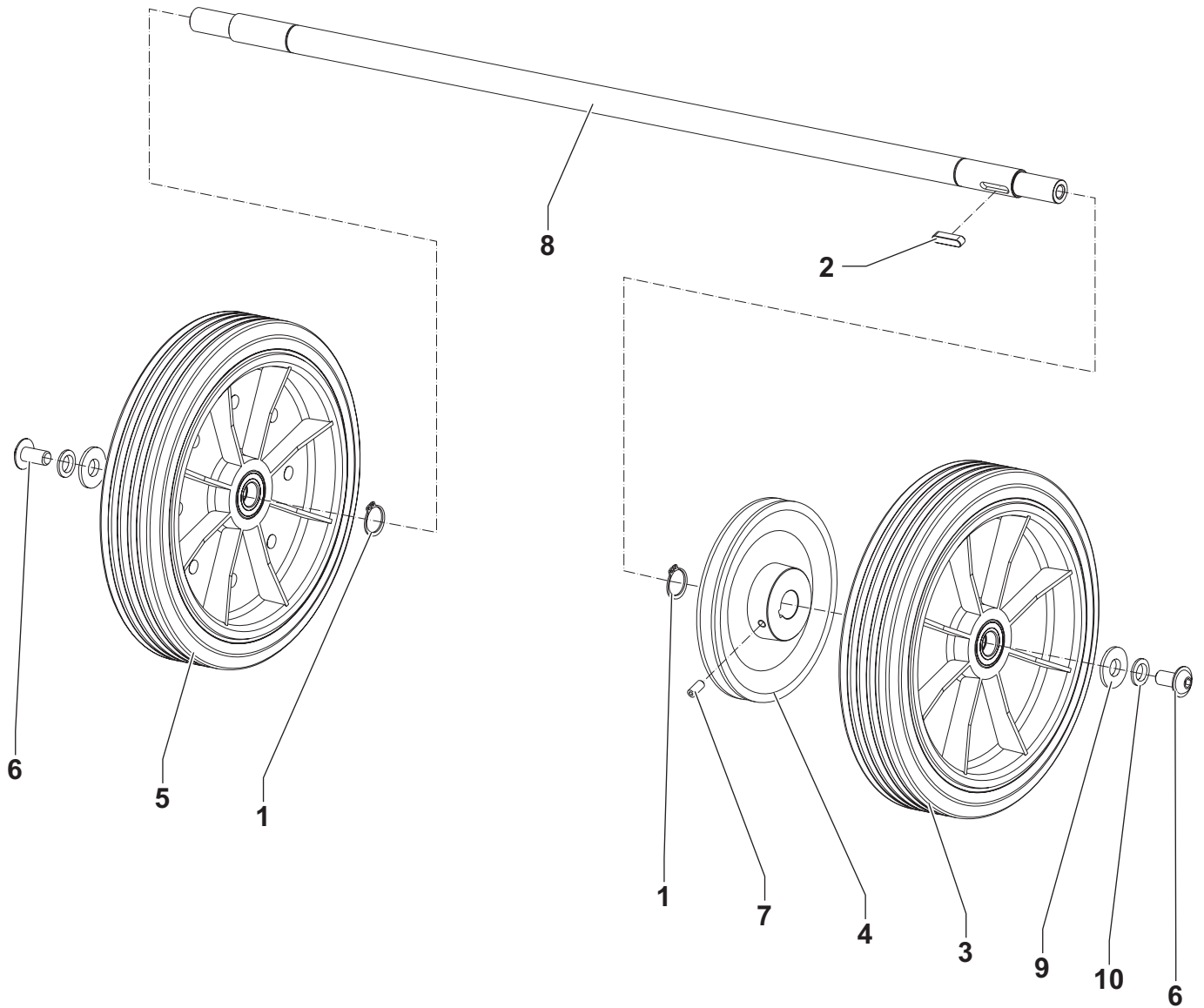
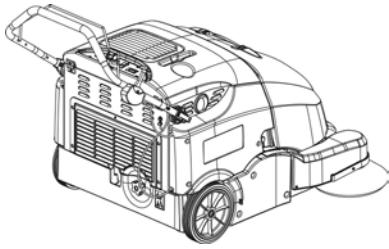
TRANSMISSION SYSTEM



TRASMISSION SYSTEM

KIT	ITEM	REF. NO.	QTY	DESCRIPTION
K1-2-3	1		5	WASHER 6X24X2 UNI6593
K2	2		1	SCREW GRUB M6X10 UNI5929
K3	3		4	SCREW M6X20 UNI5739
K1-2-3	4		5	SCREW M5X14 UNI5933
K3	5		4	SCREW M6X12 UNI5933
K1	6		1	SCREW GRUB M5X10 UNI5929
K2	7		10	SCREW M8X25 UNI5739 GALVANIZED
K3	8		4	NUT SELF L. M6 UNI7474
K3	9		8	NUT SELF L. M8 UNI7474
K3	10		8	WASHER M6 UNI6592
K3	11		8	WASHER M8 UNI6592
K1-2	12	145 1123 000	3	BALL BEARING YAT204
	13	145 1976 000	3	SUPPORT BEARING LOWER
	14	145 1977 000	3	SUPPORT BEARING UPPER
K3	15		6	SCREW M8X80 UNI5931
K1	16		1	KEY 5X5X25 UNI6604A
K3	17		6	WASHER M8 UNI1751B
K3	18		1	KEY 5X5X20 UNI6604A
K1	19		1	KEY 6X6X25 UNI6604A
K2	20		1	PULLEY D.85
K1	21		1	PULLEY D.65
K1	22	146 0523 000	1	GEAR Z50
K2	23	146 0524 000	1	GEAR Z14
	24	146 0543 000	1	BRACKET BATTERY RETAINING
	25	146 0605 000	1	COVER
K3	26		1	KEY 3/16X3/16X1
	27	146 0767 000	1	BELT XPZ 1162
K1	28		1	KEY 6X6X40 UNI6604A
K3	29		1	KEY 5X5X36 UNI6604A
K3	30		1	KEY 4X4X15 UNI6604A
	31	1464681000	1	SUPPORT GEAR BOX
K1	32		1	SPACER TRANSMISSION SHAFT
K1	33		1	SHAFT TRACTION WHEELS
K2	34		1	SHAFT MAIN BROOM
K2	35		1	SPACER BROOM SHAFT
	36	1464687000	1	BELT XPZ 912
	37	1465601000	1	TENSIONER BELT WHEELS KIT
	38	1464703000	1	SUPPORT BEARING
	39	1465602000	1	TENSIONER BELT BROOM KIT
	40	1464719000	2	SPRING TORSION 2.8X24
	41	1464722000	1	PLATE TRANSMISSION SUPPORT
	42	1464725000	1	REDUCTION GEAR COMPLETE
	43	1464744000	1	MOTOR ELECTRIC 12V 680W
	44	1464433000	1	BRUSH CARBON KIT 4PCS
	45	1464747000	1	FAN D.160 X40
K3	46		2	SCREW THREAD ROLLING M6X12
	47	1465607000	1	CHAIN GROUND KIT
K3	48		4	WASHER 8X24 UNI6593
	K1	1465599000	1	SHAFT TRACTION KIT
	K2	1465600000	1	SHAFT BROOM KIT
	[K3]	1465467000	1	HARDWARE TRASMISSION KIT

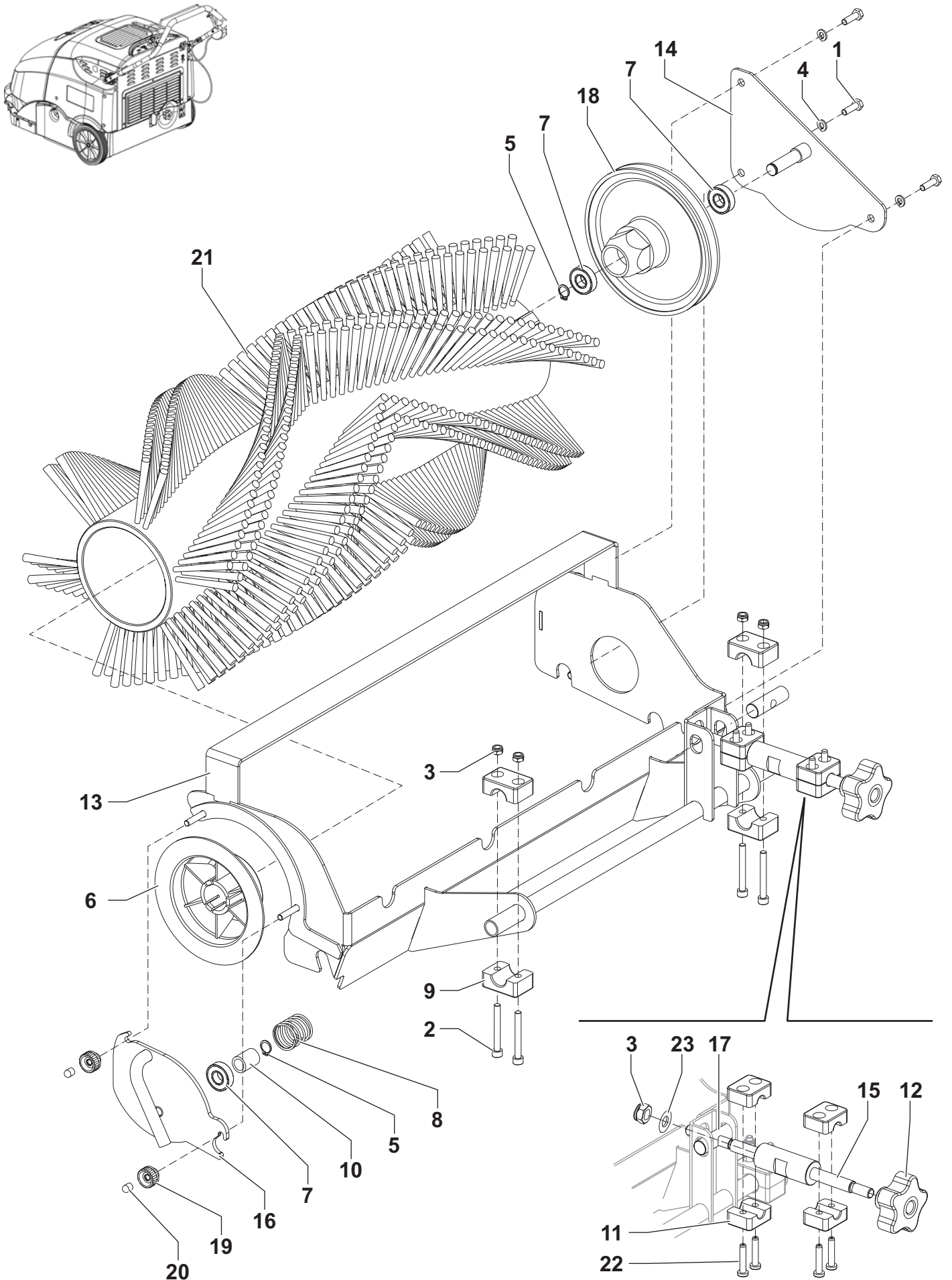
WHEELS SYSTEM



WHEELS SYSTEM

KIT	ITEM	REF. NO.	QTY	DESCRIPTION
K1	1		2	RING D 20 UNI7436
K1	2		1	KEY 6X6X25 UNI6604A
	3	146 0513 000	1	WHEEL RIGHT
K1	4		1	PULLEY D.140
	5	146 0518 000	1	WHEEL LEFT
K1	6		2	SCREW M10X20 ISO7380FLA
K1	7		1	SCREW GRUB M6X14 UNI5929
	8	1464668000	1	SHAFT TRACTION WHEELS
K1	9		2	WASHER 10X30 UNI6592
K1	10		2	WASHER NORD LOCK M10
	[K1]	1465469000	1	HARDWARE WHEELS KIT

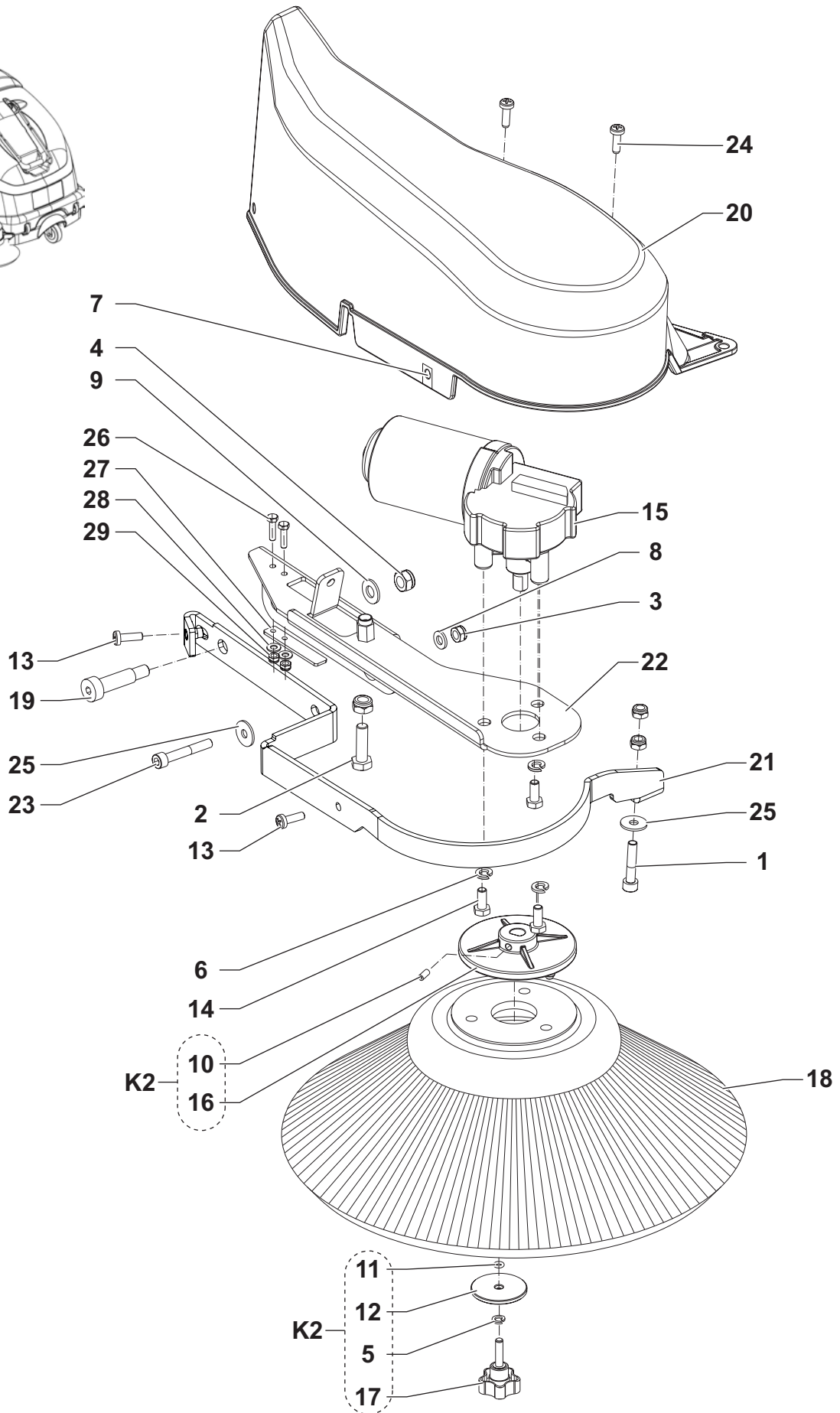
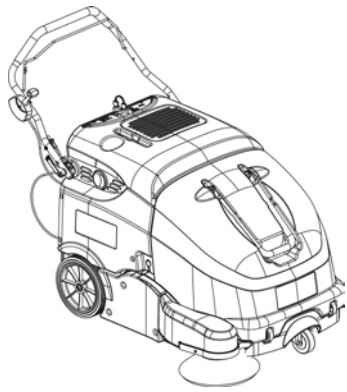
MAIN BROOM SYSTEM



MAIN BROOM SYSTEM

KIT	ITEM	REF. NO.	QTY	DESCRIPTION
K1	1		3	SCREW M6X16 UNI5739
K1	2		4	SCREW M6X50 UNI5931
K1	3		5	NUT SELF L. M6 UNI7474
K1	4		3	WASHER M6 UNI1751B
K1	5		2	RING D 12 UNI7435
	6	145 0269 000	1	HUB LEFT MAIN BROOM
	7	145 0270 000	3	BALL BEARING 6001 2RS
K1	8		1	SPRING
K1	9		2	COLLAR PIPE FIXING D.18
K1	10		1	SPACER 12X17X22.5
K1	11		2	COLLAR.PIPE FIXING D.12
	12	1464476000	1	KNOB BLACK/YELLOW
	13	1465487000	1	SUPPORT MAIN BROOM
	14	1465489000	1	SUPPORT BROOM PULLEY
	15	1464689000	1	SCREW BROOM ADJUSTMENT
	16	1464695000	1	SUPPORT IDLE HUB
K1	17		1	PIN 15X50
	18	1464746000	1	PULLEY MAIN BROOM
	19	1464885000	2	KNOB M6 D.20 PLASTIC
K1	20		2	CAP YELLOW
	21	1465215000	1	BROOM MAIN D.265X600 PPL 0.8-0.5
	21*	1465216000	1	BROOM MAIN D.265X600 MIX 5
	21*	146 0750 000	1	BROOM MAIN D.265X600 STEEL MIX
K1	22		4	SCREW CYL HD 6X30 SELF L.PLAST
K1	23		1	WASHER M6 UNI6592
	[K1]	1465470000	1	HARDWARE MAIN BROOM KIT

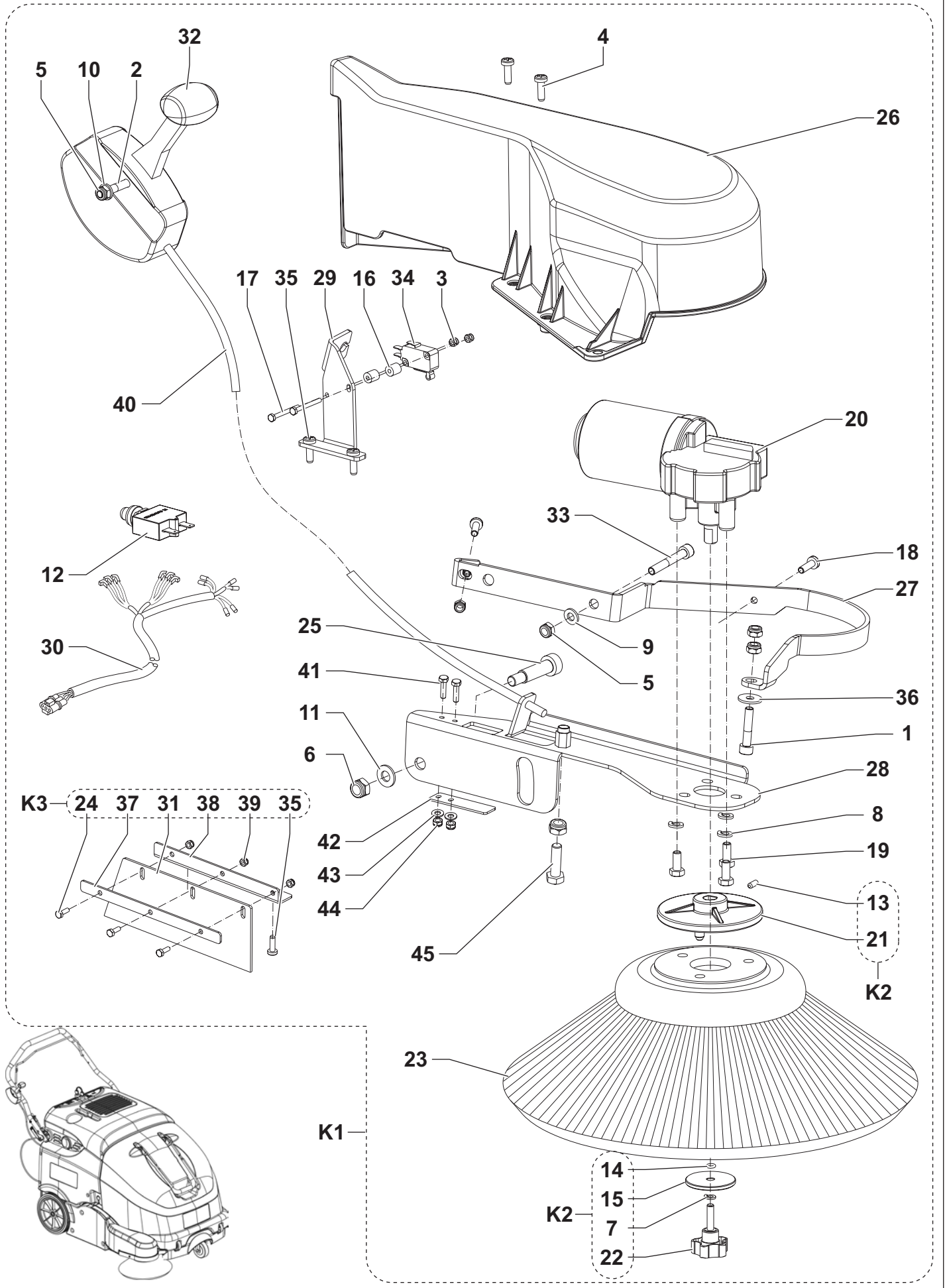
RIGHT BROOM



RIGHT BROOM

KIT	ITEM	REF. NO.	QTY	DESCRIPTION
K1	1		1	SCREW M6X30 UNI5931
K1	2		1	SCREW M8X25 UNI5739 SS
K1	3		3	NUT SELF L. M6 UNI7474
K1	4		2	NUT SELF L. M8 UNI7474
K2	5		1	WASHER M5 UNI1751B
K2	6		3	WASHER M6 UNI1751B
K1	7		1	CLIP FOR SCREW
K1	8		1	WASHER M6 UNI6592
K1	9		1	WASHER M8 UNI6592
K2	10		1	SCREW GRUB M5X10 UNI5929
K2	11		1	SEAL O-RING
K2	12		1	SPACER 5.5X38X3
K1	13		2	SCREW M5X16 UNI7687
K2	14		3	SCREW M6X16 UNI5739
	15	146 3028 000	1	REDUCTION GEARMOTOR 40W 12V
K2	16		1	HUB SIDE BROOM
K2	17		1	KNOB M5X20
	18	146 3035 000	1	BROOM SIDE 109X315 PPL0.5
	18*	146 3036 000	1	BROOM SIDE 109X315 NYLON CARPE
K1	19		1	SCREW SHOULDER 10X30 M8 ISO7939
	20	1464675000	1	COVER RIGHT SIDE BROOM
	21	1465497000	1	BUMPER RIGHT BROOM
	22	1465011000	1	SUPPORT RIGHT SIDE BROOM
K1	23		1	SCREW M6X40 UNI5931
K1	24		2	SCREW CYL HD 5X25 SELF L.
K1	25		2	WASHER 6X18 UNI6592
K1	26		2	SCREW M4X14 UNI5739
K1	27		1	PADDLE FOR DRIVE MICROSWITCH
K1	28		2	WASHER 4X12 UNI6593
K1	29		2	NUT SELF L. M4 UNI7474
	[K1]	1465471000	1	HARDWARE SIDE BROOM KIT
	K2	1463865000	1	HUB SIDE BROOM FIXING KIT

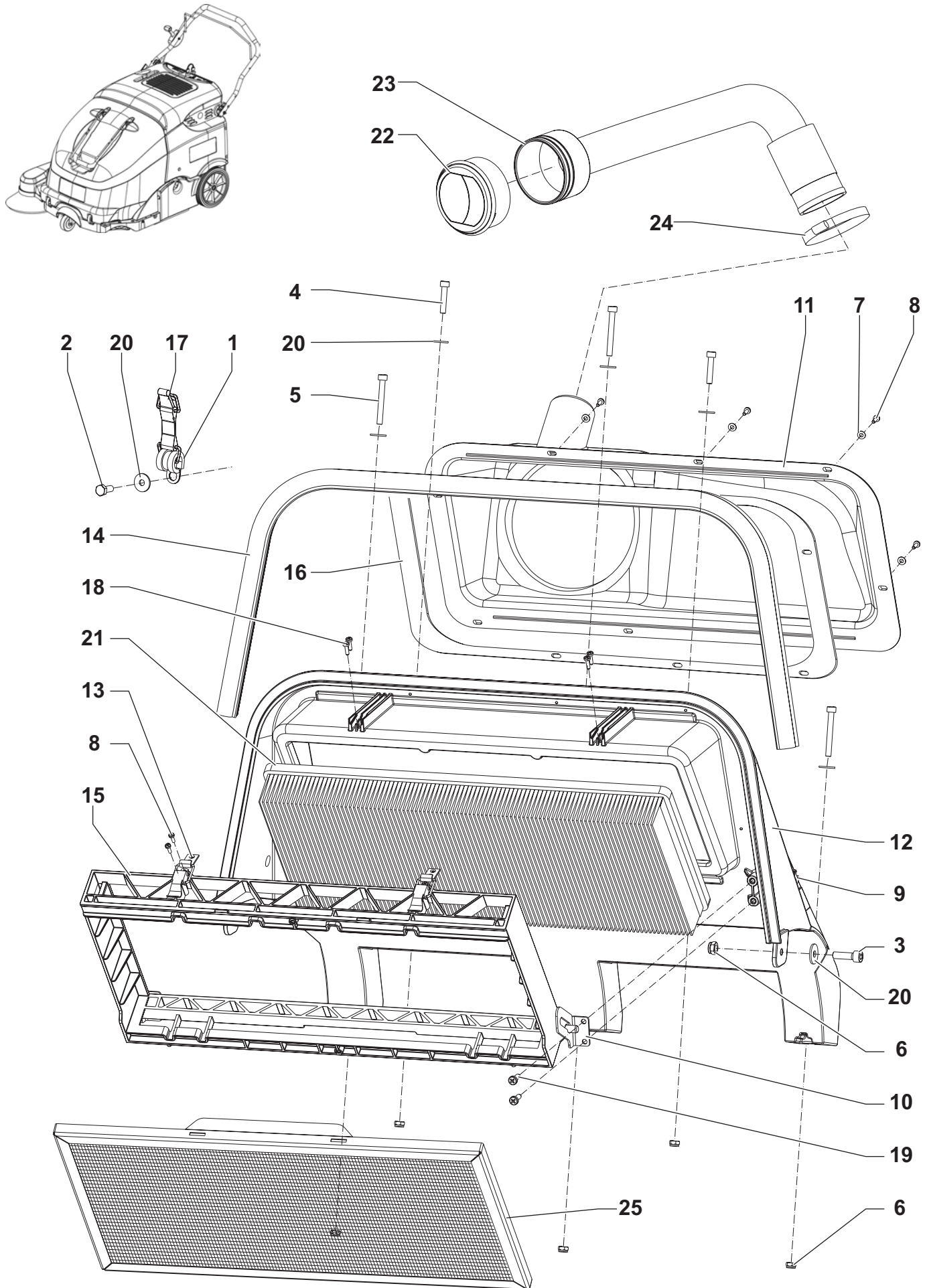
LEFT BROOM (OPTIONAL)



LEFT BROOM (OPTIONAL)

KIT	ITEM	REF. NO.	QTY	DESCRIPTION
K4	1		1	SCREW M6X30 UNI5931
K4	2		1	SCREW M6X55 UNI5931 D.6X55
K4	3		2	NUT SELF L. M3 UNI7474
K4	4		2	SCREW CYL HD 5X25 SELF L.
K4	5		4	NUT SELF L. M6 UNI7474
K4	6		2	NUT SELF L. M8 UNI7474
K2	7		1	WASHER M5 UNI1751B
K2	8		3	WASHER M6 UNI1751B
K4	9		1	CLIP FOR SCREW
K4	10		2	WASHER M6 UNI6592
K4	11		1	WASHER M8 UNI6592
K1	12	1465605000	1	CIRCUIT BREAKER 5A KIT
K2	13		1	SCREW GRUB M5X10 UNI5929
K2	14		1	SEAL O-RING
K2	15		1	SPACER 5.5X38X3
K4	16		2	SPACER 3X8X9
K4	17		2	SCREW M3X30 UNI5737
K4	18		2	SCREW M5X16 UNI7687
K2	19		3	SCREW M6X14 UNI5739
K1	20	146 3028 000	1	REDUCTION GEARMOTOR 40W 12V
K2	21		1	HUB SIDE BROOM
K2	22		1	KNOB M5X20
K1	23	146 3035 000	1	BROOM SIDE 109X315 PPL0.5
	23*	146 3036 000	1	BROOM SIDE 109X315 NYLON CARPE
K4-3	24		3	SCREW M6X16 UNI5739
K4	25		1	SCREW SHOULDER 10X30 M8 ISO7939
K1	26	1464676000	1	COVER LEFT SIDE BROOM
K1	27	1465498000	1	BUMPER LEFT BROOM
K1	28	1465012000	1	SUPPORT LEFT SIDE BROOM
K1	29	1465014000	1	SUPPORT LEFT SIDE BROOM SWITCH
K1	30	1465142000	1	HARNESS LEFT BROOM
K3	31		1	SKIRT RECYCLING
K1	32	1465183000	1	LEVER LEFT SIDE BROOM CONTROL
K4	33		1	SCREW M6X40 UNI5931
K1	34	909 6677 000	1	MICROSWITCH
K4-3	35		2	SCREW CYL HD 5X16 SELF L.
K4	36		2	WASHER 6X18 UNI6592
K4-3	37		1	SUPPORT FOR RECYCLING SKIRT
K4-3	38		1	PLATE FOR RECYCLING SKIRT
K4-3	39		3	NUT SELF L. M4 UNI7474
K1	40	1465532000	1	CABLE FOR SIDE BROOM LEVER
K4	41		2	SCREW M4X14 UNI5739
K4	42		1	PADDLE FOR DRIVE MICROSWITCH
K4	43		2	WASHER 4X12 UNI6593
K4	44		2	NUT SELF L. M4 UNI7474
K4	45		1	SCREW M8X25 UNI5739 SS
	K1*	1465408000	1	BROOM LEFT SIDE KIT
		1465407000	1	INSTRUCTIONS INSTALLATION
K1	K2	1463865000	1	HUB SIDE BROOM FIXING KIT
K1	K3	1465595000	1	SKIRTS RECYCLING KIT
K1	[K4]	1465471000	1	HARDWARE SIDE BROOM KIT

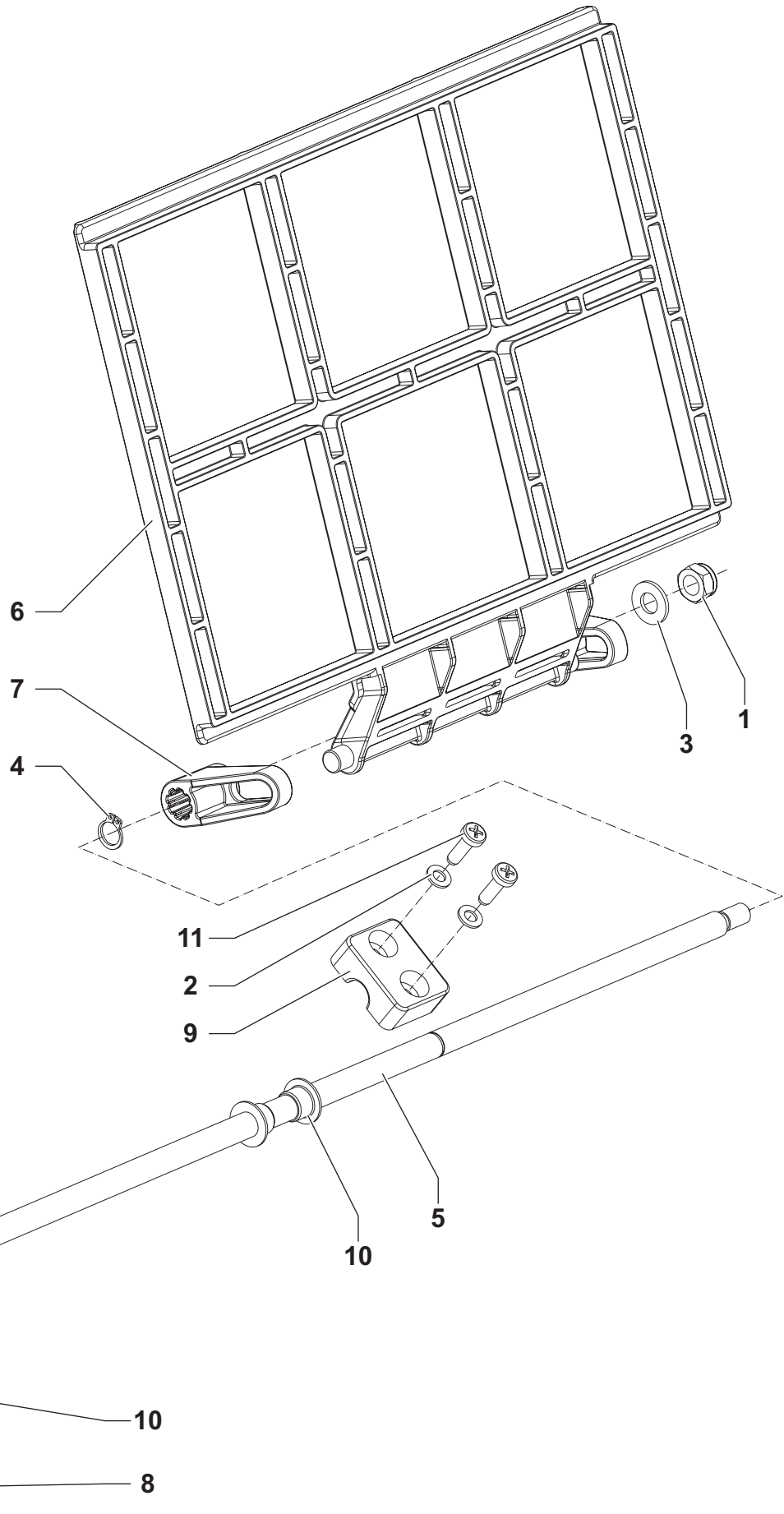
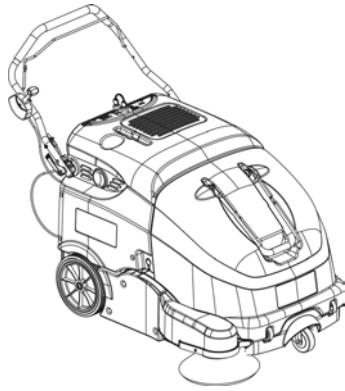
FILTER SYSTEM



FILTER SYSTEM

KIT	ITEM	REF. NO.	QTY	DESCRIPTION
	1	33003435	1	DOUBLE COLLAR D5
K1	2		1	SCREW M6X16 UNI5739
K1	3		2	SCREW M6X20 UNI5931
K1	4		2	SCREW M6X30 UNI5931
K1	5		3	SCREW M6X50 UNI5931
K1	6		8	NUT SELF L. M6 UNI7474
K1	7		8	WASHER 4X12 UNI6593
K1	8		12	SCREW 3.5X12
K1	9		2	CLIP FOR SCREW
K1	10		2	BRACKET FILTER SUPPORT
K1	11		1	CONVEYOR AIR
K1	12		1	SUPPORT FOR FILTER
	13	1464884000	2	LOCK LEVER
	14	1465610000	1	GASKET BULB REINFORCED KIT
	15	1465146000	1	FRAME FOR PANEL FILTER
	16	1465517000	1	GASKET FOR CONVEYOR
	17	1465525000	1	LATCH RUBBER
K1	18		4	SCREW CYL HD 3.5X20 SELF L.
K1	19		4	SCREW CYL HD 5X16 SELF L.
K1	20		9	WASHER 6X18 UNI6592
	21	1464691000	1	FILTER POLYESTER
	21*	1464902000	1	FILTER PAPER
	22	33010103	1	OPENING
	23	1464887000	1	HOSE WET BY-PASS
	24	145 0543 000	1	CLAMP 14/32-52
	25*	1465018000	1	PREFILTER
	[K1]	1465472000	1	HARDWARE FILTER SYSTEM KIT

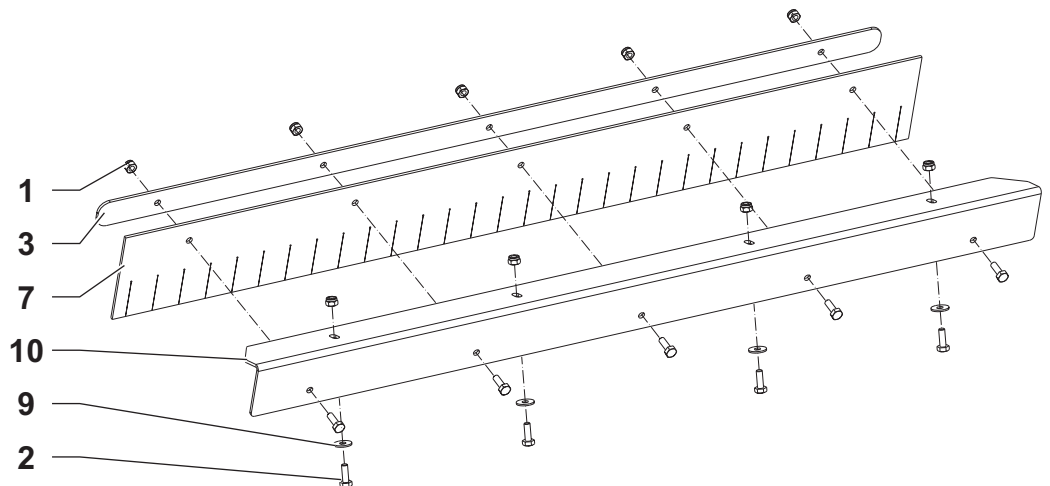
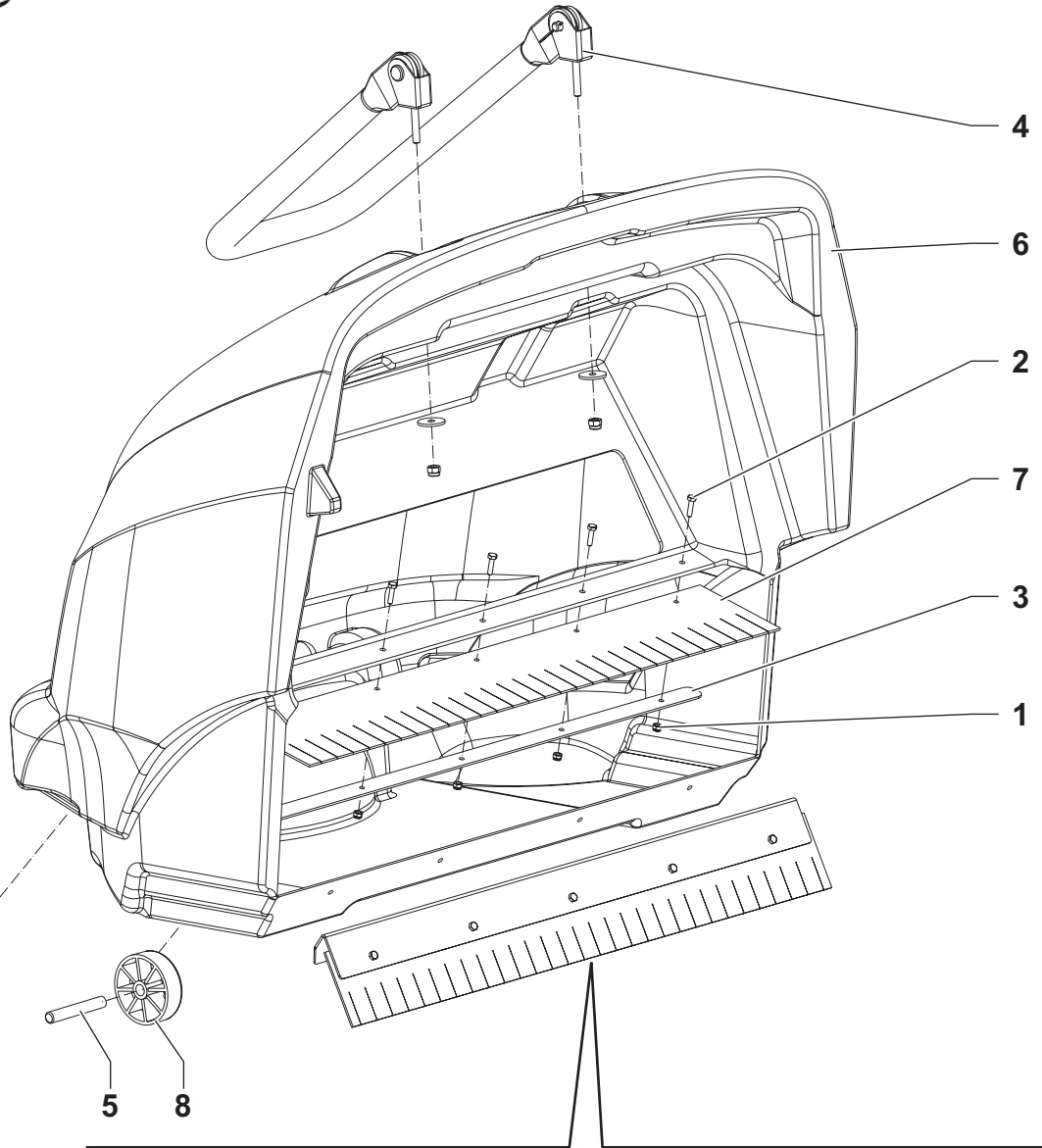
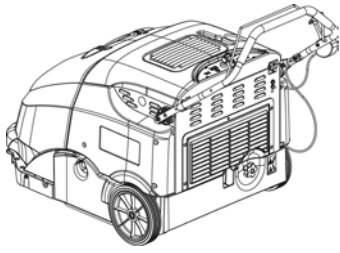
FILTER SHAKER MANUAL



FILTER SHAKER MANUAL

KIT	ITEM	REF. NO.	QTY	DESCRIPTION
K1	1		1	NUT SELF L. M8 UNI7474
K1	2		2	WASHER M5 UNI6592
K1	3		1	WASHER M8 UNI6592
K1	4		1	RING D 10 UNI7435
K2	5	1465028000	1	ROD FILTER SHAKER
K2	6	1465029000	1	RAKE FILTER SHAKER
K2	7	1465030000	2	DRAGGER FILTER SHAKER
K2	8	1465103000	1	HANDLE M8 PLASTIC
K1	9		1	COLLAR PIPE FIXING D.12 SINGLE
K1	10		3	BUSH FLANGED
K1	11		2	SCREW CYL HD 5X16 SELF L.
K2	[K1]	1465479000	1	HARDWARE MANUAL FILTER SHAKER KIT
	[K2]	1465480000	1	FILTER SHAKER MANUAL KIT

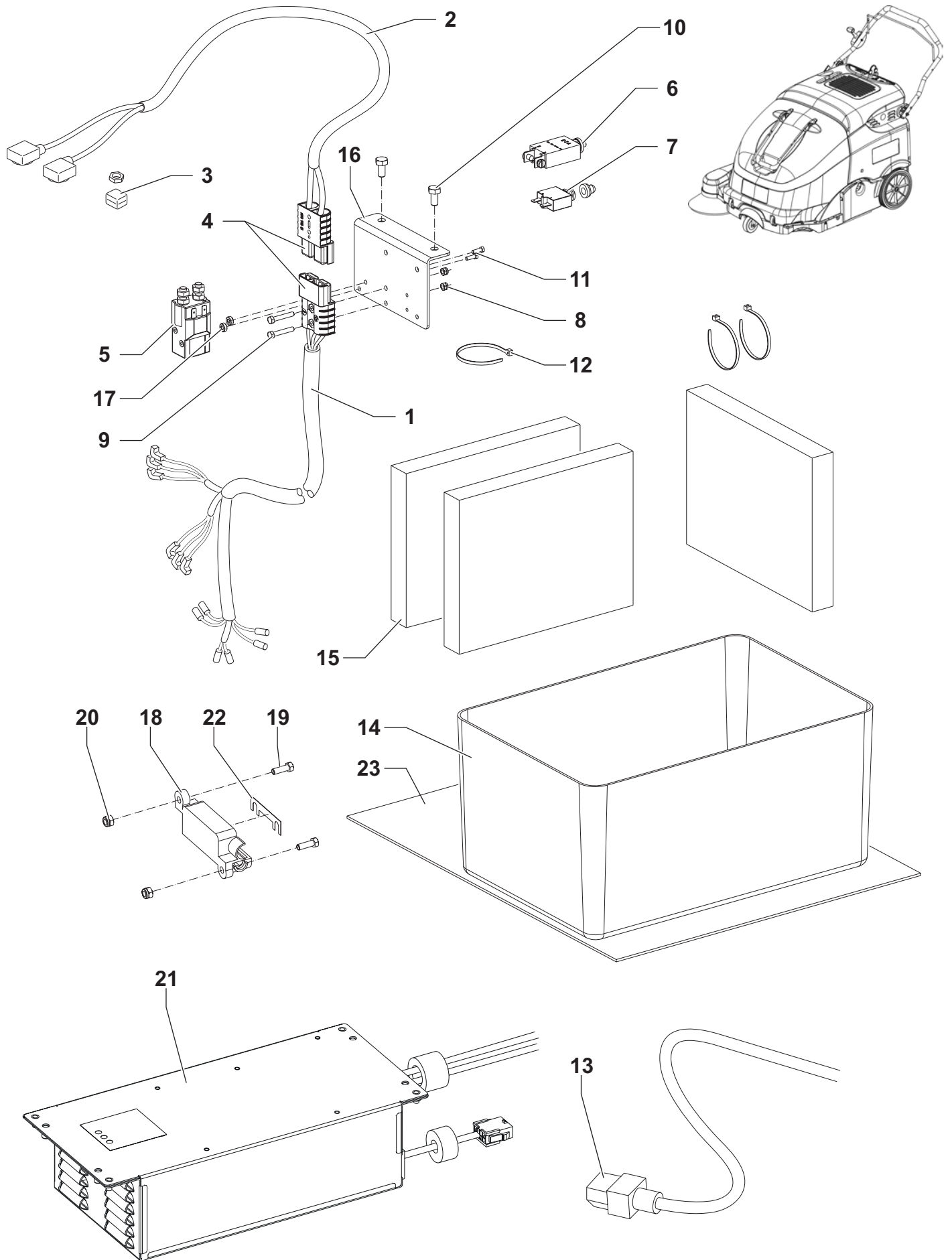
HOPPER SYSTEM



HOPPER SYSTEM

KIT	ITEM	REF. NO.	QTY	DESCRIPTION
K1	1		14	NUT SELF L. M4 UNI7473
K1	2		14	SCREW M4X14 UNI5739
K1	3		2	PLATE CONTAINER SKIRT
	4	1465477000	1	HANDLE WASTE CONTAINER KIT
	5	1464997000	2	PIN D.9.5X70
	6	1465016000	1	CONTAINER WASTE
	7	1465476000	1	SKIRTS WASTE CONTAINER KIT
	8	L08602460	2	ROLLER BUMPER
K1	9		9	WASHER 4X12 UNI6593
K1	10		1	PLATE CONTAINER SKIRT
	[K1]	1465475000	1	HARDWARE WASTE CONTAINER KIT

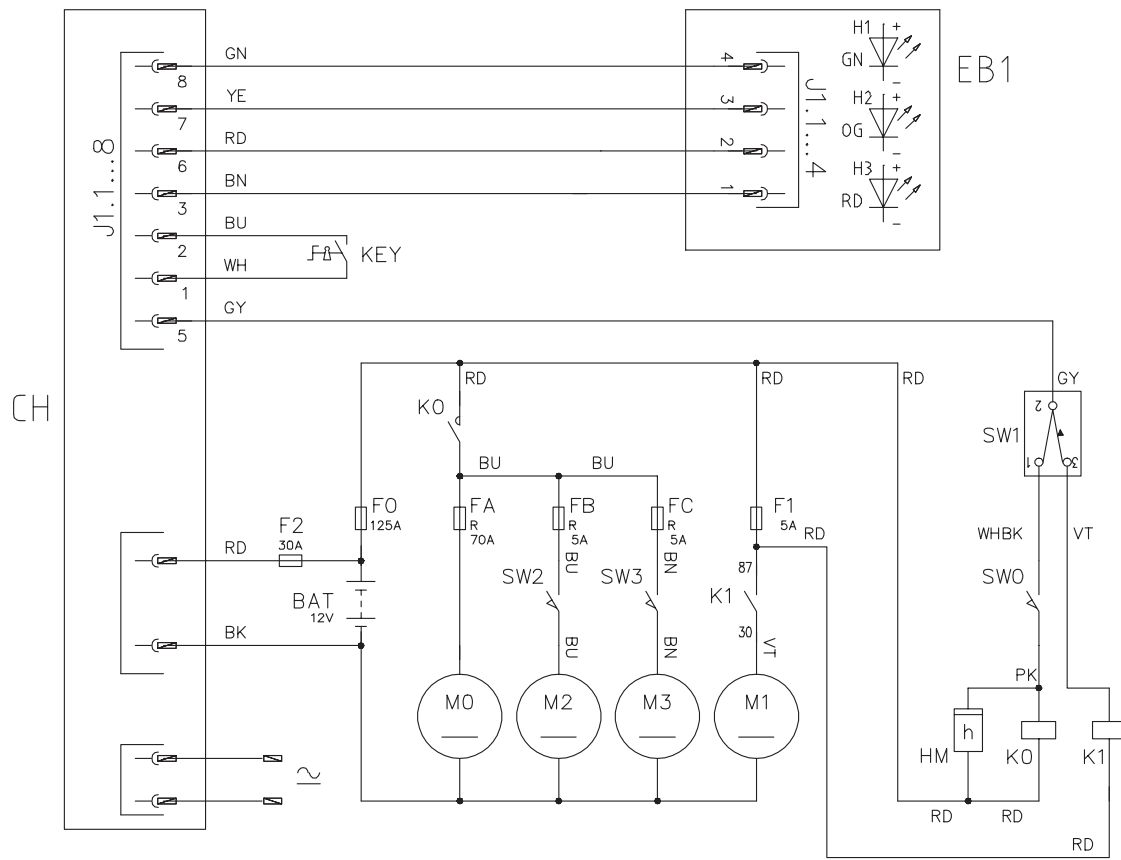
ELECTRICAL SYSTEM



ELECTRICAL SYSTEM

KIT	ITEM	REF. NO.	QTY	DESCRIPTION
	1	1465495000	1	HARNESS MACHINE B
	2	1465407000	1	HARNESS BATTERY
	3	9099756000	1	FUSE 125A
	4	L08812093	2	CONNECTOR 120A GREY
	5	146 0747 000	1	SWITCH ELECTROMAGNETIC 12V 100A
	6	1464904000	1	CIRCUIT BREAKER 70A KIT
	7	1465605000	1	CIRCUIT BREAKER 5A KIT
K1	8		2	NUT SELF L. M5 UNI7474
K1	9		2	SCREW M5X30 UNI5739
K1	10		2	SCREW M8X16 UNI5739
K1	11		2	SCREW M4X12 UNI5739
K1	12		3	CLAMP 3.6x140
	13	9096914000	1	CABLE EXTENSION FOR CHARGER US
	14	145 5252 000	1	CONTAINER BATTERY
	15	146 0668 000	3	PANEL INSULATING
	16	1464698000	1	SUPPORT RELAIS AND FUSES
K1	17		2	SPACER 4.3X10X4
	18	145 8046 000	1	HOLDER FUSE
K1	19		2	SCREW M4X12 UNI5739
K1	20		2	NUT SELF L. M4 UNI7474
	21	1465494000	1	CHARGER BATTERY 12V 25A 180-258AH
	22	1465102000	1	FUSE STRIP 30A
	23	1465500000	1	RUBBER PROTECTION CHARGER
	[K1]	1465478000	1	HARDWARE ELECTRICAL SYSTEM KIT

WIRING DIAGRAM



WIRING DIAGRAM

KEY	REF. NO.	DESCRIPTION	DESCRIZIONE
BAT	-	12 V BATTERY	BATTERIE 12 V
CH	1465494000	BATTERY CHARGER	CARICABATTERIE
EB1	146 3073 000	LED BOARD	SCHEDA LED
F0	9099756000	SYSTEM FUSE (125 A)	FUSIBILE PROTEZIONE IMPIANTO (125 A)
F1	145 9853 000	FILTER SHAKER FUSE (5 A)	FUSIBILE SCUOTIFILTRO (5 A)
F2	1465102000	BATTERY CHARGER FUSE (30 A)	FUSIBILE CARICABATTERIE (30 A)
FA	1465606000	MAIN MOTOR CIRCUIT BREAKER (70 A)	FUSIBILE RIPR. MOTORE PRINCIPALE (70 A)
FB	1465605000	RIGHT SIDE BROOM CIRCUIT BREAKER (5 A)	FUSIBILE RIPR. SPAZZOLA LAT. DESTRA (5 A)
FC	1465605000	LEFT SIDE BROOM CIRCUIT BREAKER (5 A) (OPT.)	FUSIBILE RIPR. SPAZZOLA LAT. SINISTRA (5 A) (OPZ.)
HM	1465514000	HOURMETER	CONTAORE
K0	1464904000	ELECTRIC MOTOR CONTACTOR	TELERUTTORE MOTORE PRINCIPALE
K1	9098441000	FILTER SHAKER RELAY	RELÈ SCUOTIFILTRO
KEY	146 2888 000	KEY SWITCH	CHIAVE
M0	1464744000	ELECTRIC MAIN MOTOR	MOTORE ELETTRICO PRINCIPALE
M1	146 0527 000	FILTER SHAKER MOTOR	MOTORE SCUOTIFILTRO
M2	146 3028 000	RIGHT BROOM MOTOR	MOTORE SPAZZOLA LATERALE DESTRA
M3	146 3028 000	LEFT BROOM MOTOR (OPT.)	MOTORE SPAZZOLA LATERALE SINISTRA (OPZ.)
SW0	145 9679 000	SAFETY HOPPER SWITCH	MICROINTERRUTTORE CONTENITORE RIFIUTI
SW1	1465465000	FILTER SHAKER SWITCH	INTERRUTTORE SCUOTIFILTRO
SW2	909 6677 000	RIGHT SIDE BROOM MICROSWITCH	MICROINTERR. SPAZZOLA LAT. DESTRA
SW3	909 6677 000	LEFT SIDE BROOM MICROSWITCH (OPT.)	MICROINTERR. SPAZZOLA LAT. SINISTRA (OPZ.)

KEY	COLOUR	COLORE
BK	BLACK	NERO
BU	LIGHT BLUE	AZZURRO
BN	BROWN	MARRONE
GN	GREEN	VERDE
GY	GREY	GRIGIO
OG	ORANGE	ARANCIONE

KEY	COLOUR	COLORE
PK	PINK	ROSA
RD	RED	ROSSO
VT	VIOLET	VIOLA
WH	WHITE	BIANCO
YE	YELLOW	GIALLO

RECOMMENDED PARTS

REF. NO.	QTY	DESCRIPTION
		NORMAL WEAR
1465215000	1	BROOM MAIN D.265X600 PPL 0.8-0.5
1465463000	1	SKIRTS KIT
146 3035 000	1	BROOM SIDE 109X315 PPL0.5
		ORDINARY MAINTENANCE
1465610000	1	GASKET BULB REINFORCED
1464691000	1	FILTER POLYESTER
1464744000	1	MOTOR ELECTRIC 12V 680W
1464433000	1	BRUSH CARBON KIT 4PCS
1464687000	1	BELT XPZ 912
146 0767 000	1	BELT XPZ 1162
145 0270 000	3	BALL BEARING 6001 2RS
909 6602 000	1	WHEEL CASTOR
146 3028 000	1	REDUCTION GEARMOTOR 40W 12V
1464908000	1	CABLE TRACTION
		EXTRAORDINARY MAINTENANCE
1465146000	1	FRAME FOR PANEL FILTER
1464884000	2	LOCK LEVER
1464725000	1	REDUCTION GEAR COMPLETE
146 0523 000	1	GEAR Z50
146 0524 000	1	GEAR Z14
145 1123 000	3	BALL BEARING YAT204
1464719000	2	SPRING TORSION 2.8X24
1464476000	1	KNOB BLACK/YELLOW
909 6677 000	1	MICROSWITCH
145 9679 000	1	MICROSWITCH 10A 250V
1465017000	1	LEVER RIGHT SIDE BROOM CONTROL
1465532000	1	CABLE FOR SIDE BROOM LEVER

OPTIONAL

	REF. NO.	QTY	DESCRIPTION
	80564500	2	BATT. 6V-180AH WET TUBULAR MONOBLOC
	80564600	1	BATT. 12V-110AH WET TUBULAR MONOBLOC
	80564000	2	BATT. 6V-180AH GEL MONOBLOC
	80564400	1	BATT. 12V-105AH GEL MONOBLOC
	1465541000	1	SKIRTS NON MARKING KIT
	1465514000	1	COUNTER HOUR 24V KIT (HM)
	1465216000	1	BROOM MAIN D.265X600 MIX 5
	146 0750 000	1	BROOM MAIN D.265X600 STEEL MIX
	146 3036 000	1	BROOM SIDE 109X315 NYLON CARPE
	1465408000	1	BROOM LEFT SIDE KIT
	1464691000	1	FILTER POLYESTER
	1465018000	1	PRE-FILTER



Advance

14600 21st Avenue North
Plymouth, MN 55447-3408

www.advance-us.com

Phone: 800-989-2235

Fax: 800-989-6566

©2013 Nilfisk-Advance, Inc.

A Nilfisk-Advance Brand