



## Electronic Service Manuals

This electronic document is provided as a service to our customers. We do not create the contents of the information contained in this document. Should you have detailed questions pertaining to the information contained in this document, you may contact Michco, or the manufacturer which provided the original information in this electronic deliverable. Michco's only part in this electronic deliverable was the electronic assembly process. By providing this manual on line we are not guaranteeing parts availability.

You may contact Michco through the following methods:

Phone (517) 484-9312 or (800) 331-3339

2011 N. High St. -- Lansing, Michigan -- 48906

Fax: (517) 484-9836

Email: [CustServe@Michco.com](mailto:CustServe@Michco.com)

Web site: [www.Michco.Com](http://www.Michco.Com)

Parts Web site: [www.FloorMachineParts.Com](http://www.FloorMachineParts.Com)

Order Parts on Line at:

**[www.FloorMachineParts.Com](http://www.FloorMachineParts.Com)**

Directly to Parts & Service:

By Email: **[Shop@Michco.com](mailto:Shop@Michco.com)**

By Fax: (517) 702-2041

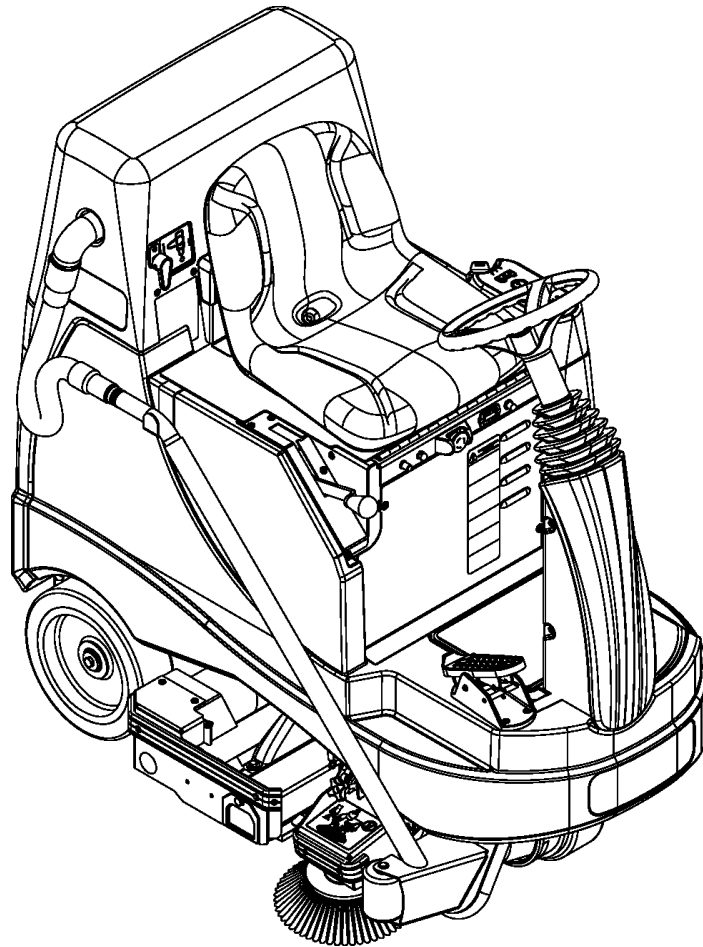
By Voice: Use numbers above.

**Serving the Cleaning Industry Since 1922**

Notice: All copyrighted material remains property of original owners, all trademarks are property of respective owners. Manuals are subject to Manufacturer's reproduction limitations. Originals or reproductions were provided by manufacturers through a request. We make no warranty as to the correctness of information provided in this document and you assume all risk. By placing these manuals on line we are not declaring our corporation to be an manufacturer authorized dealer or provider, please check our web site for authorized manufacturers we represent.

# VacRide™ 3400, 3400C

---



---

## PARTS LIST

Advance MODELS 56602000, 56602001



# Advance

10/09 revised 10/10 FORM NO. 56042521

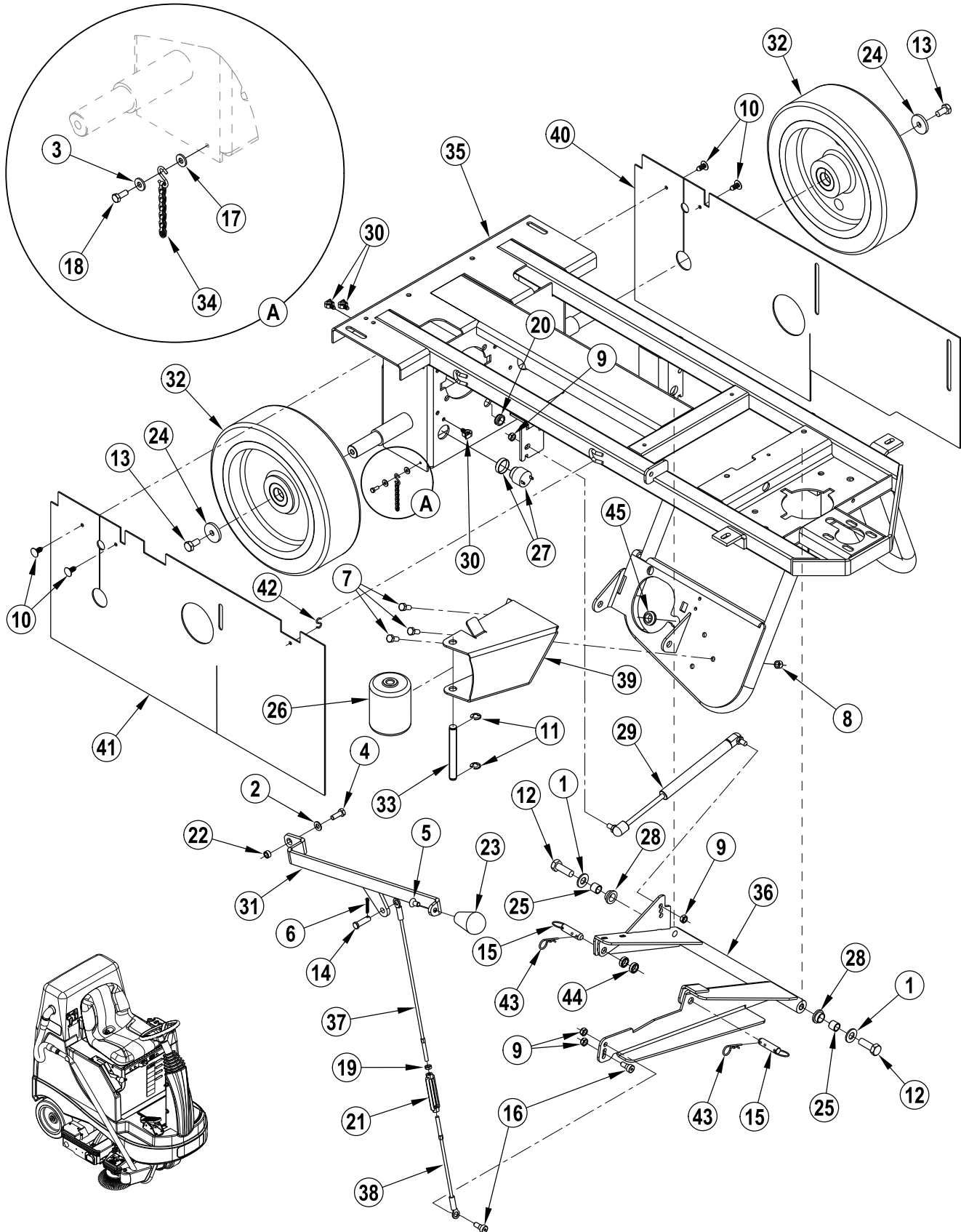


<b>DESCRIPTION</b>	<b>PAGE</b>
Chassis .....	2-3
Decal System.....	4-5
Deck System.....	6-7
Electrical System .....	8-9
Front Wheel Assembly .....	10-11
Onboard Charger Assembly .....	12-13
Recovery System.....	14-15
Side Broom System .....	16-17
Solution System.....	18-19
Steering Wheel Assembly .....	20-21
Vacuum Fan Assembly .....	22-23
Wiring Diagram .....	24-25
Optional Kits and Accessories .....	26

**WHEN ORDERING PARTS**

- \* Use the part numbers from the "Ref. No." columns in this parts list.
- \* Specify the model and serial number of the machine.
- \* Use the space below to record the model and serial number for future reference.

Model \_\_\_\_\_ Serial No. \_\_\_\_\_



09-10	<b>CHASSIS SYSTEM</b>		
10-10	<b>VacRide™ 3400, 3400C</b>		<b>3</b>

Item	Ref. No.	Qty	Description
1	56001879	2	Wsh-Fit Sae 1/2
2	56001939	1	Wsh, Flt Sae 5/16
3	56001954	1	Wsh, Flt Sae #10
4	56002037	1	Scr, Hex 5/16-18 X .88
5	56002476	1	Scr, Flt Phil 5/16-18 X .62
6	56002529	1	Pin, Cotter 1/8 X 1
7	56002667	3	Scr, Hex 5/16-18 X .75
8	56002701	3	Nut, Hex Nyl Loc 5/16-18
9	56002826	5	Nut, Hex Nyl Loc-Thin 5/16-18
10	56003263	4	Rivet, Nylon Tree Push-In (.25)
11	56003264	2	Ring, Ret Ext Type E 0.50 Dia
12	56003412	2	Scr, Hex Loc M12-1.75 X 35mm
13	56003442	2	Scr, Hex Loc M10-1.5 X 20mm
14	56003589	1	Pin, Clevis .375 X 1.25
15	56003671	2	Pin, Ring .50 X 1.25
16	56003730	2	Scr, Soc Shd .38 X .25 X 5/16-18
17	56009011	1	Wsh, Int Shprf #10
18	56009039	1	Scr, Hex Thd Form 10-24 X .50
19	56009087	1	Nut, Hex Jam 1/4-20
20	56158690	1	Grommet
21	56206814	1	Turnbuckle
22	56320595	1	Bushing .32x.50x.28
23	56364527	1	Knob
24	56367117	2	Wsh, Flt .406 X 1.5 X .1875
25	56367206	2	Bushing
26	56407006	1	Wheel, Roller
27	56412177	1	Horn/Backup Alarm (H2)
28	56420160	2	Bearing, Flange
29	56422179	1	Cylinder, Gas
30	56507793	3	Clip, Conduit
31	56601381	1	Lift Lever Weldment
32	56601482	2	Wheel
33	56601580	1	Pin
34	56601716	1	Ground Chain
35	56602021	1	Chassis Weldment
36	56602034	1	Linkage Weldment
37	56602127	1	Wire Rope Assy
38	56602128	1	Wire Rope Assy
39	56602129	1	Roller Brkt
40	56602140	1	Skirt - Left
41	56602141	1	Skirt - Right
42	56745391	1	S Hook
43	56002959	2	Pin, Cotter Hair
44#	56481456	2	Bushing
45	56157376	1	Grommet

# = Revised or new since last update



09-10	<b>DECAL SYSTEM</b>		
10-10	<b>VacRide™ 3400, 3400C</b>		<b>5</b>

Item	Ref. No.	Qty	Description
1	56014601	1	Decal, Caution
2	56016619	1	Decal, Wand
3	56016730	1	Decal-Advance
5	56601414	1	Decal, Circuit Breaker
6	56601416	1	Decal-Battery Wiring
7	56601418	1	Decal
8	56602014	1	Decal - Instruction
9	56602015	1	Decal - Hepa
10	56602075	2	Decal Vacride
11#	56602265	1	Decal-HEPA Warning

# = Revised or new since last update



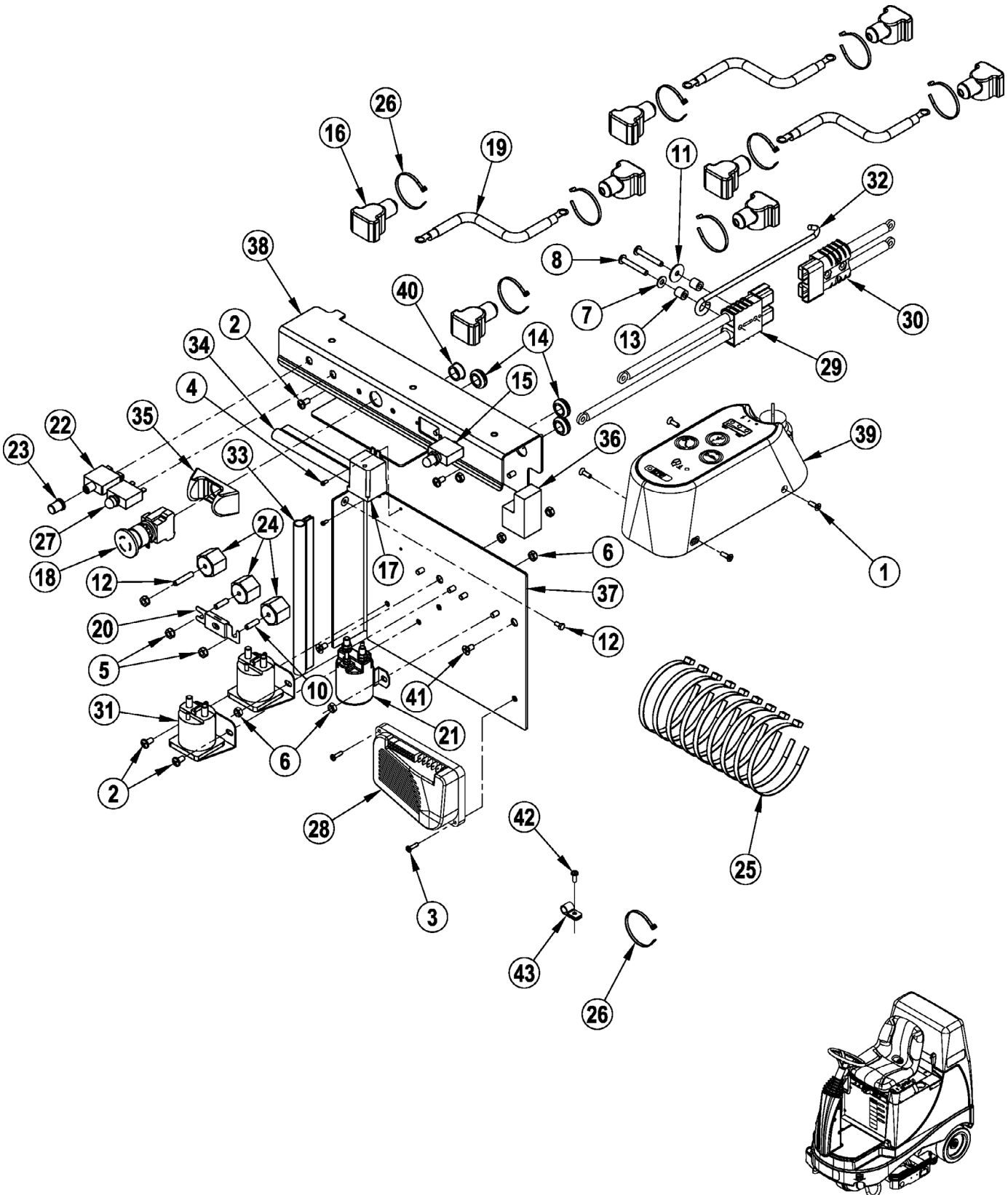
09-10	<b>DECK SYSTEM</b>			
10-6	<b>VacRide™ 3400, 3400C</b>			<b>7</b>

Item	Ref. No.	Qty	Description
1	56001954	1	Wsh, Flt Sae #10
2	56002035	4	Scr, Hex 5/16-18 X .62
3	56002043	7	Scr, Pan Phil 10-24 X .38
4	56002086	4	Scr, Soc Set Loc 5/16-18 X .25
5	56002098	6	Wsh, Flt Sae 1/4
6	56002145	2	Scr, Pan Phil 1/4-20 X .50
7	56002221	2	Scr, Hex 5/16-18 X 1.00
8	56002701	2	Nut, Hex Nyl Loc 5/16-18
9	56002708	2	Nut, Hex Nyl Loc 1/4-20
10	56002838	4	Nut, Hex Nyl Loc 4-40
11	56002843	2	Nut, Hex Nyl Loc-Thin 1/2-13
12	56002948	6	Scr,Hex Hd Loc 1/4-20x.75
13	56003127	4	Scr, Pan Phil 4-40 X .50
14	56003603	6	Scr, Pan Phil Thd Form 1/4-20 X .38
15	56009011	1	Wsh, Int Shprf #10
16	56009012	1	Scr, Hex Thd Form 10-24 X .38
17	56009043	2	Scr, Pan Phil Thd Form 10-24 X .75
18	56009052	4	Wsh, Int Shprf 5/16
19	56009082	8	Scr, Pan Phil Thd Form-Blk 10-24 X .50
20	56009122	2	Wsh, Flt .344 X .938 X .125
21	56009204	2	Scr, Button Soc 1/4-20 X .50
22	56052964	1	Carpet Magnet
23	56249040	2	Belt, Poly V
24	56315061	2	Motor-24 Vdc .5 Hp 1800 Rpm <b>(M7,M8) TSBUS2010-1058</b>
[ ]	56412287	1	Motor Brush/Spring Kit <b>NOTE 2</b>
[ ]	56380003	1	Motor Brush/Spring Kit <b>NOTE 2</b>
25	56407433	2	Sheave, Poly-V
26	56409538	4	Insulator, Terminal
27	56601388	2	Up Stop Mount
28	56601683	2	Plug-Cap
29	56602037	1	Tube Intake
30	56602052	1	Housing Weldment
31	56602053	2	Brush Assembly <b>NOTE 1</b>
[ ]	56262647	1	Bearing, Block (Drive End)
[ ]	56602041	1	Bearing, Block (Idler End)
32	56602060	1	Deck Bracket Weldment
33	56602095	1	Tube-Duct
34	56602109	2	Cover Pulley
35	56602113	1	Gasket Intake
36	56602154	1	Clamping Bar
37	56602166	2	Bumper
38	56602168	2	Cover Belt
39	56602176	2	Plate - Motor
40	56602196	2	Strap
41	56602198	1	Deflector - Rear
42	56602239	1	Divider Plate Assembly
43	56602242	2	Caster
44	56602244	2	T-Knob Assembly
45	56643426	1	Carpet Magnet
46	56744814	2	Plug, Cap

[ ] = Not Shown

**NOTE 1:** Cannot use any other brushes.

**NOTE 2:** If your cylindrical scrub motor has a serial tag from Scott Motors Co. order Brush / Spring Kit 56412287.  
If your cylindrical scrub motor has a serial tag from Nilfisk-Advance order Brush / Spring Kit 56380003.



09-10

**ELECTRICAL SYSTEM**

09-12

**VacRide™ 3400, 3400C**

9

Item	Ref. No.	Qty	Description
1	56002099	4	Scr, Flt Phil 10-24 X .62
2	56002145	4	Scr, Pan Phil 1/4-20 X .50
3	56002146	2	Scr, Pan Phil 8-32 X .62
4	56002539	2	Scr, Pan Phil Thd Form 6-32 X .31
5	56002561	3	Nut, Hex W/ Shprf 1/4-20
6	56002840	6	Nut, Hex Nyl Loc-Thin 1/4-20
7	56002859	1	Wsh, Flt Sae Ss 1/4
8	56002997	2	Scr, Pan Phil 1/4-20 X 1.75
9	56009012	1	Scr, Hex Thd Form 10-24 X .38
10	56009020	2	Stud
11	56009060	1	Wsh, Flt Ss .260 X 1.000 X .074
12	56009203	1	Stud, 1/4-20
13	56046309	2	Spacer, Phenolic
14	56157376	3	Grommet
15	56315255	1	Circuit Breaker, 5 Amp <b>(CB3)</b>
16	56372673	8	Boot, Battery Post
17	56396286	1	Relay,Spst, 24v <b>(K4)</b>
18	56407130	1	Disconnect, Emergency <b>(S4)</b>
19	56409485	3	Cable,Battery
20	56412089	1	Fuse, 150 Amp <b>(F1)</b>
21	56412179	1	Contacto, 24 Vdc <b>(K1)</b>
22	56454429	1	Circuit Breaker, 70 Amp <b>(CB2)</b>
23	56459369	1	Boot, Reset Button
24	56469858	3	Electrical Mount
25	56477613	9	Tie, Cable
26	56478246	9	Tie, Cable
27	56507644	1	Circuit Breaker, 10 Amp <b>(CB1)</b>
28	56601061	1	Controller, Speed <b>(A2)</b>
29	56601171	1	Connector Assy
30	56601172	1	Connector Assy
[ ]	56601175	1	Harness, Traction Drive
31	56601183	2	Contacto 24v, 100 Amp <b>(K2,K3)</b>
32	56601215	1	Prop Rod, Seat
33	56601251	1	Gasket
34	56601252	1	Gasket
[ ]	56601431	1	Cable Assembly
35	56601434	1	Emergency Button Guard
36	56601600	1	Foam Insert
[ ]	56602023	1	Harness Main
37	56602036	1	Panel Electric
38	56602066	1	Panel
39	56602105	1	Interface Panel Assembly <b>(A1)</b>
[ ]	56602233	1	Kit, Interface Panel
[ ]	56303553	1	Key Switch <b>(S1)</b>
[ ]	56303526	A/R	Replacement Key Set
40	56900144	1	Plug, Cap
41	56002755	2	Scr, Flt Phil 1/4-20 X .50
42	56009029	1	Scr, PanPhil Thd Form 10-24 X .50
43	56172017	1	Clamp-P

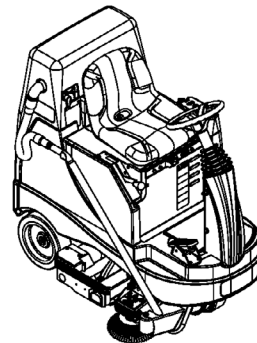
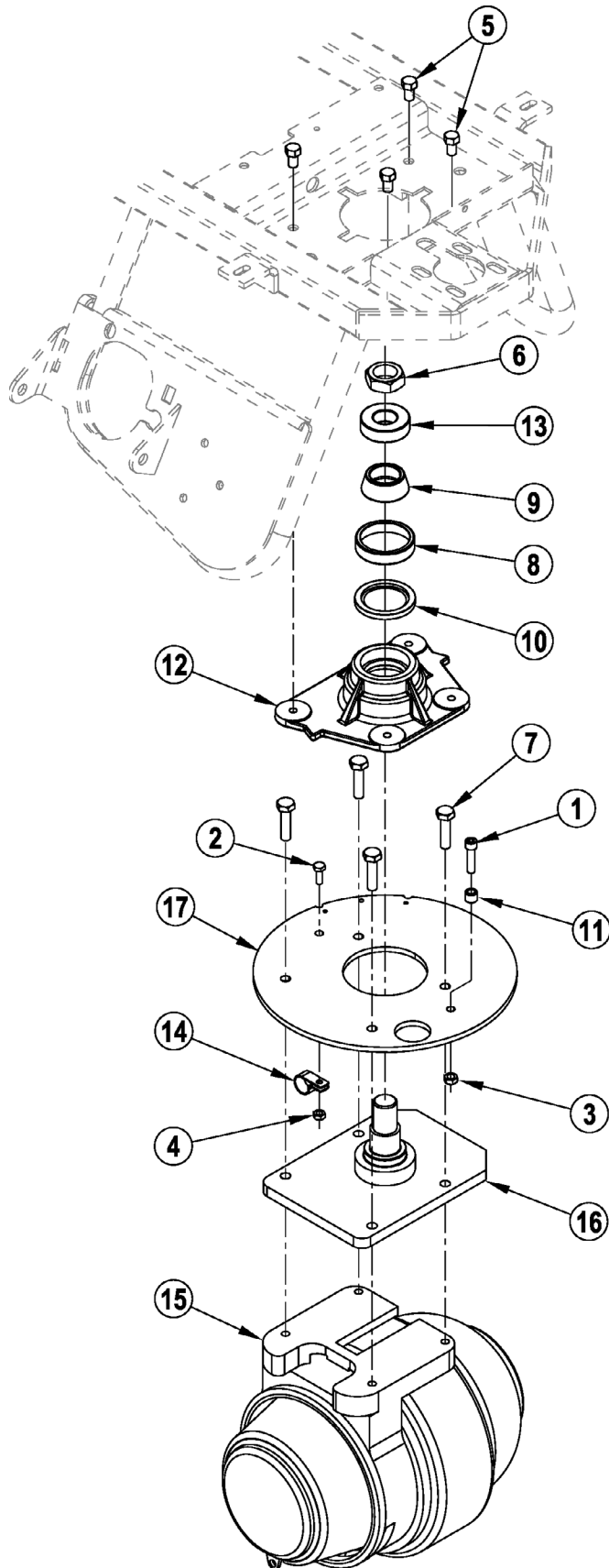
[ ] = Not Shown

**FRONT WHEEL ASSEMBLY**

09-10

10

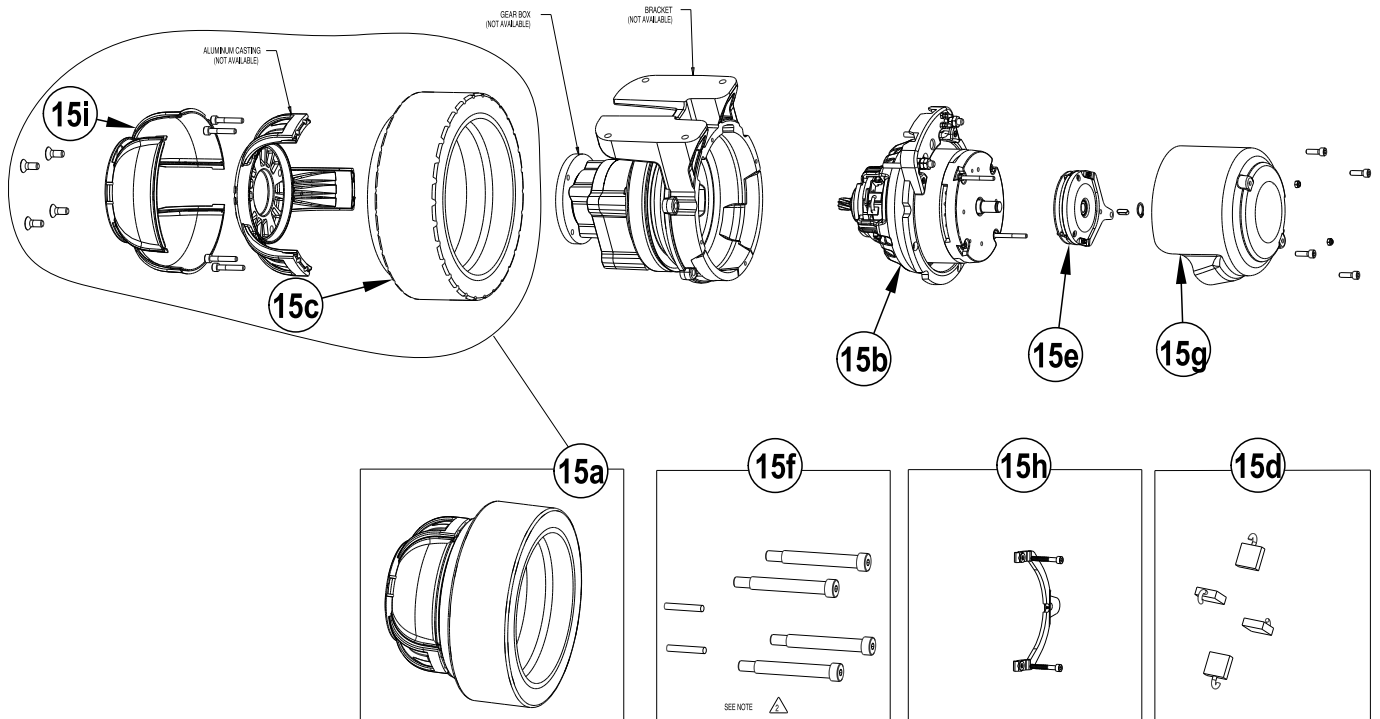
**VacRide™ 3400, 3400C**

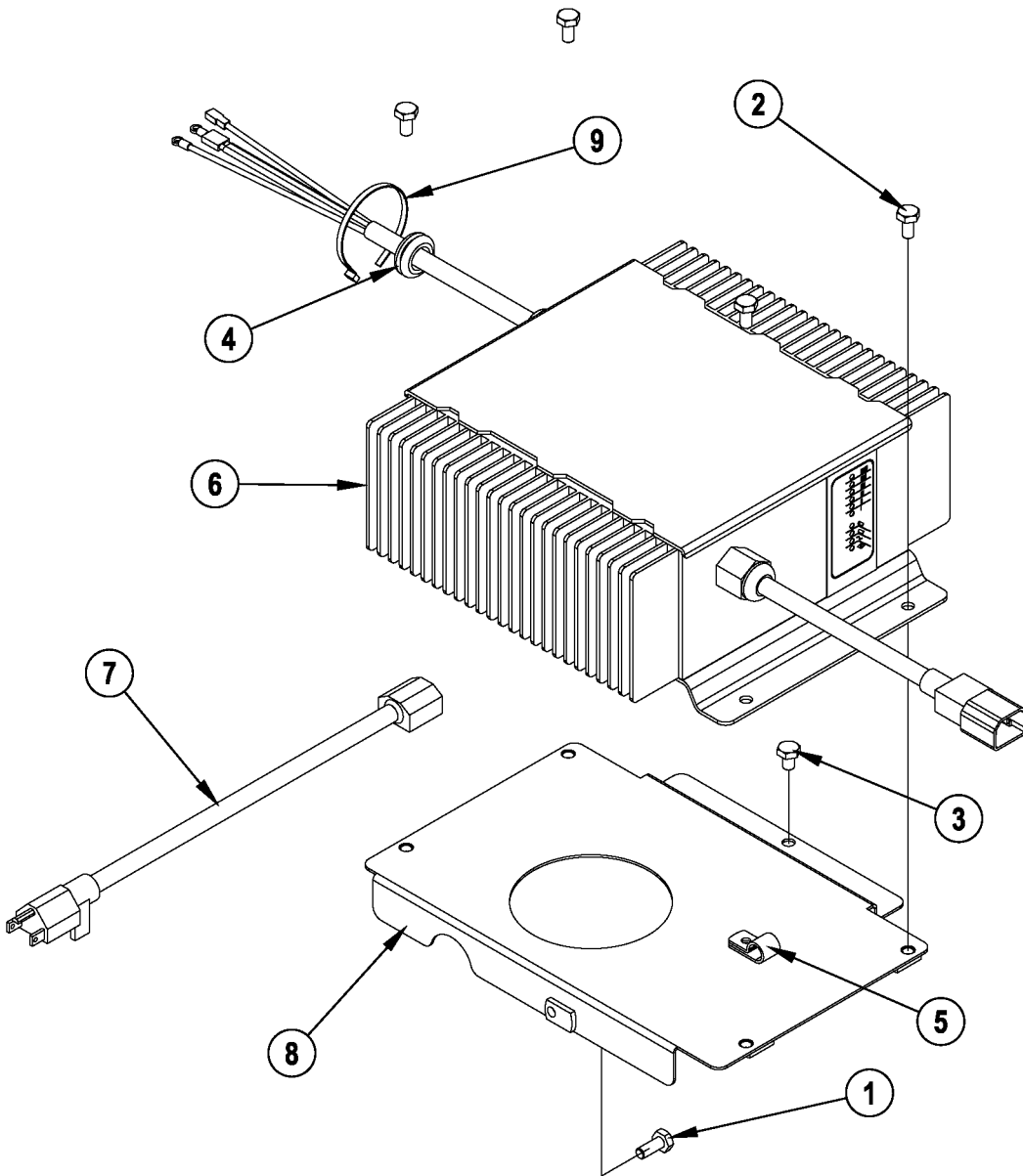


Item	Ref. No.	Qty	Description
1	56002131	1	Scr, Soc Hd 5/16-18 X 1.25
2	56002155	1	Scr, Hex 1/4-20 X .75
3	56002826	5	Nut, Hex Nyl Loc-Thin 5/16-18
4	56002840	5	Nut, Hex Nyl Loc-Thin 1/4-20
5	56003040	4	Scr,Hex Hd Loc 3/8-16x.62
6	56003220	1	Nut, Hex Nyl Loc-Thin 1-14
7	56003491	4	Scr, Hex M10-1.5 X 40mm
8	56158143	1	Bearing Cup
9	56158151	1	Bearing Cone
10	56171081	1	Seal,Shaft
11	56244941	1	Bushing
12	56314032	1	Block, Bearing
13	56378380	1	Bearing Ball
14	56486112	1	Clamp-P
15	56601050	1	Motor / Drive Wheel <b>(M1)</b>
15a#	56601472	1	Kit, Drive Motor Tire W/Hub
15b#	56601473	1	Replacement Motor, Drive Motor
15c#	56601471	1	Tire
15d#	56601509	1	Carbon Brush Kit
15e#	56601507	1	Brake, Electromagnetic <b>(Y1)</b>
15f#	56422174	1	Tire Puller Kit
15g#	56601506	1	Drive Motor Cover
15h#	56380310	1	Kit-Brake Lever
15i#	56504481	1	Cover Gearbox Motor
16	56601077	1	Spindle Weldt
17	56601159	1	Plate, Steering

[ ] = Not Shown

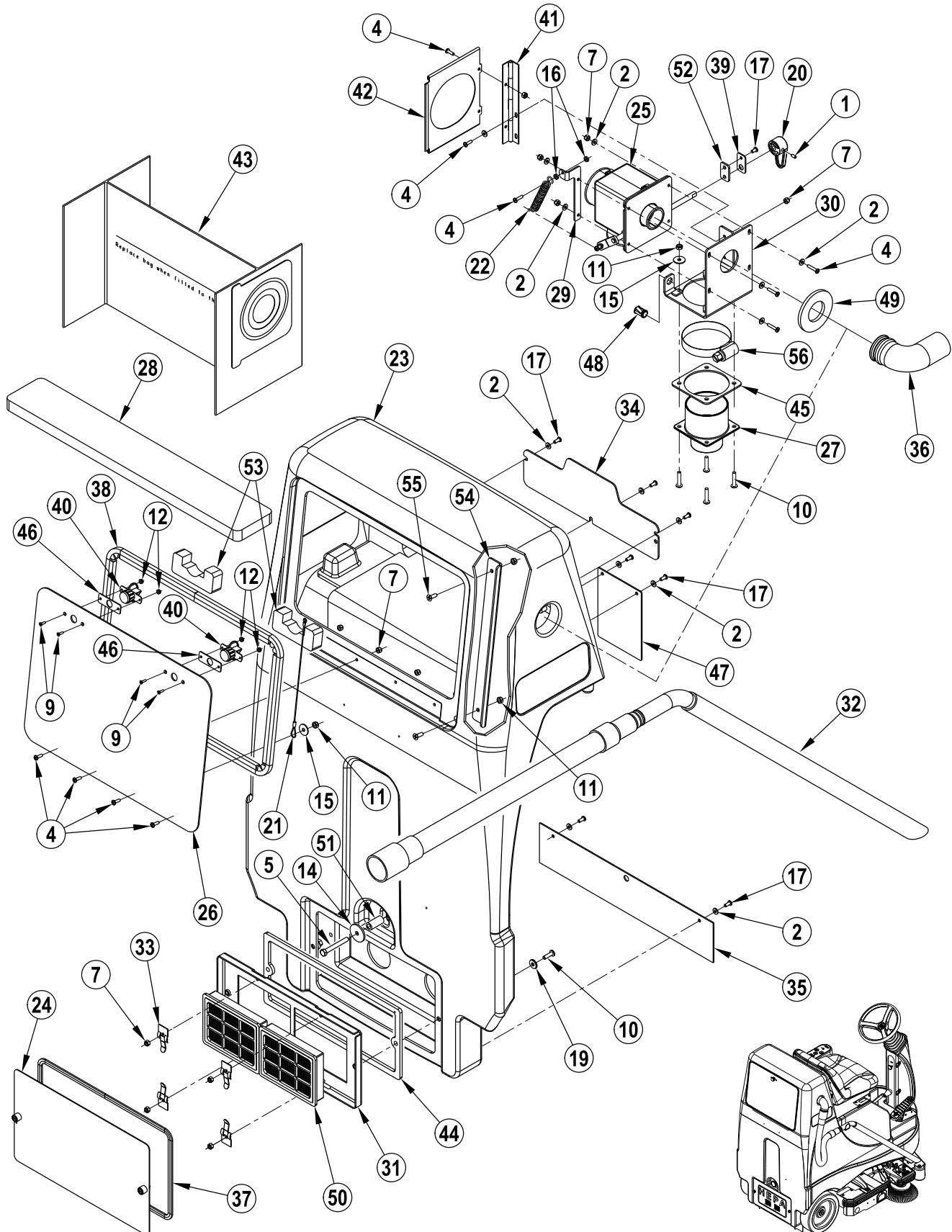
# = Revised or new since last update





<b>Item</b>	<b>Ref. No.</b>	<b>Qty</b>	<b>Description</b>
	56601095	1	Onboard Charger Assembly <b>NOTE 1 / TSBUS2008-984</b>
1	56001836	1	Scr, Hex 1/4-20 X .62
2	56001854	4	Scr, Hex 1/4-20 X .50
3	56009019	1	Scr, Hex Thd Form 1/4-20 X .38
4	56157376	1	Grommet
5	56172017	1	Clamp,P
6	56315124	1	Charger, On-Board 24v
7	56315270	1	Charger Cord, Us
8	56601417	1	Charger Mount Bracket
9	56478246	1	Cable Tie

**NOTE 1:** Standard on the following models: 56602001



09-10

**RECOVERY SYSTEM**

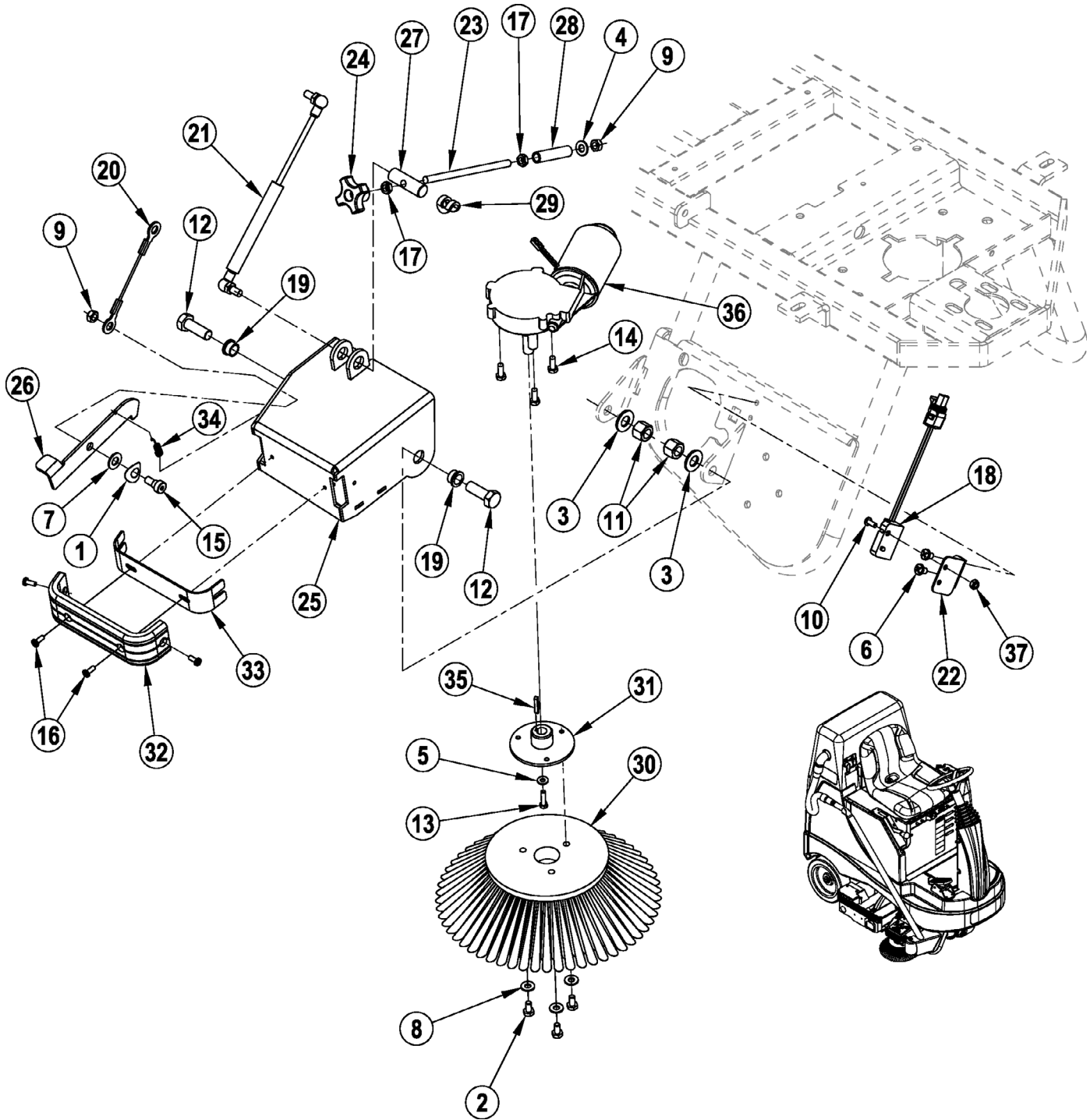
10-10

**VacRide™ 3400, 3400C****15**

Item	Ref. No.	Qty	Description	Item	Ref. No.	Qty	Description
1	56001823	1	Scr, Soc Set Loc 10-24 X .38	32	56602132	1	Vac Wand With Hose
2	56001954	15	Wsh, Flt SAE #10	[ ]	56602230	1	Handle – Wand
3#			<b>DELETED</b>	[ ]	56602231	1	Wand – Plastic
4#	56002192	13	Scr, Pan Phil 10-24 X .75	[ ]	56602232	1	Hose
5	56002488	1	Scr, Hex Thd To Hd 5/16-18 X 2.50	33	56602135	4	Latch - Snap Down
6#			<b>DELETED</b>	34	56602139	1	Panel
7#	56002768	16	Nut, Hex Nyl Loc 10-24	35	56602144	1	Skirt - Rear
8#			<b>DELETED</b>	36	56602148	1	Elbow
9	56002816	4	Scr, Flt Phil 6-32 X .50	37	56602156	1	Gasket
10#	56002825	6	Scr, Pan Phil 1/4-20 X 1.25	38	56602157	1	Gasket
11	56002840	4	Nut, Hex Nyl Loc-Thin 1/4-20	39	56602159	1	Retainer
12	56002864	4	Nut, Hex Nyl Loc-Thin 6-32	40	56602160	2	Knob
14	56003716	1	Wsh- Flt SS .320 X 1.500 X .125	41	56602163	1	Hinge
15	56009002	2	Wsh, Flt .266 X .906 X .060	42	56602164	1	Bracket
16	56009009	2	Nut, Hex Machine 10-24	43	56602167	1	Disposable Bag - 6 Pack
17#	56009191	8	Scr, Pan Phil Plastite 10-14 X .50	44	56602177	1	Gasket
18#			<b>DELETED</b>	45	56602179	1	Gasket
19	56201047	2	Washer, Sealing	46	56602186	2	Gasket
20	56330821	1	Lever	47	56602187	1	Flap
21	56053793	1	Wire Rope- .062 Dia x 10.5L	48	56602190	1	Magnet
22	56448112	1	Spring Ext	49	56602246	1	Gasket
23	56602026	1	Tank Vacuum	50	1471250600	2	Filter Hepa
24	56602032	1	Cover Filter	51	56315068	1	Spacer, Phenolic
25	56602033	1	Vacuum Diverter Assy	52	56602254	1	Gasket
26	56602071	1	Weldment Vac Tank Cover	53	56602260	2	Foam Pad
27	56602072	1	Fitting Vacuum Hose	54	56602264	1	Bracket-Support
28	56602073	1	Filter	55	56002784	2	Scr, Flt Phil ¼ -20 x .75
29	56602101	1	Bracket Spring Mount				
30	56602118	1	Bracket				
31	56602120	1	Panel				

[ ] = Not Shown

# = Revised or new since last update



09-10

**SIDE BROOM SYSTEM**

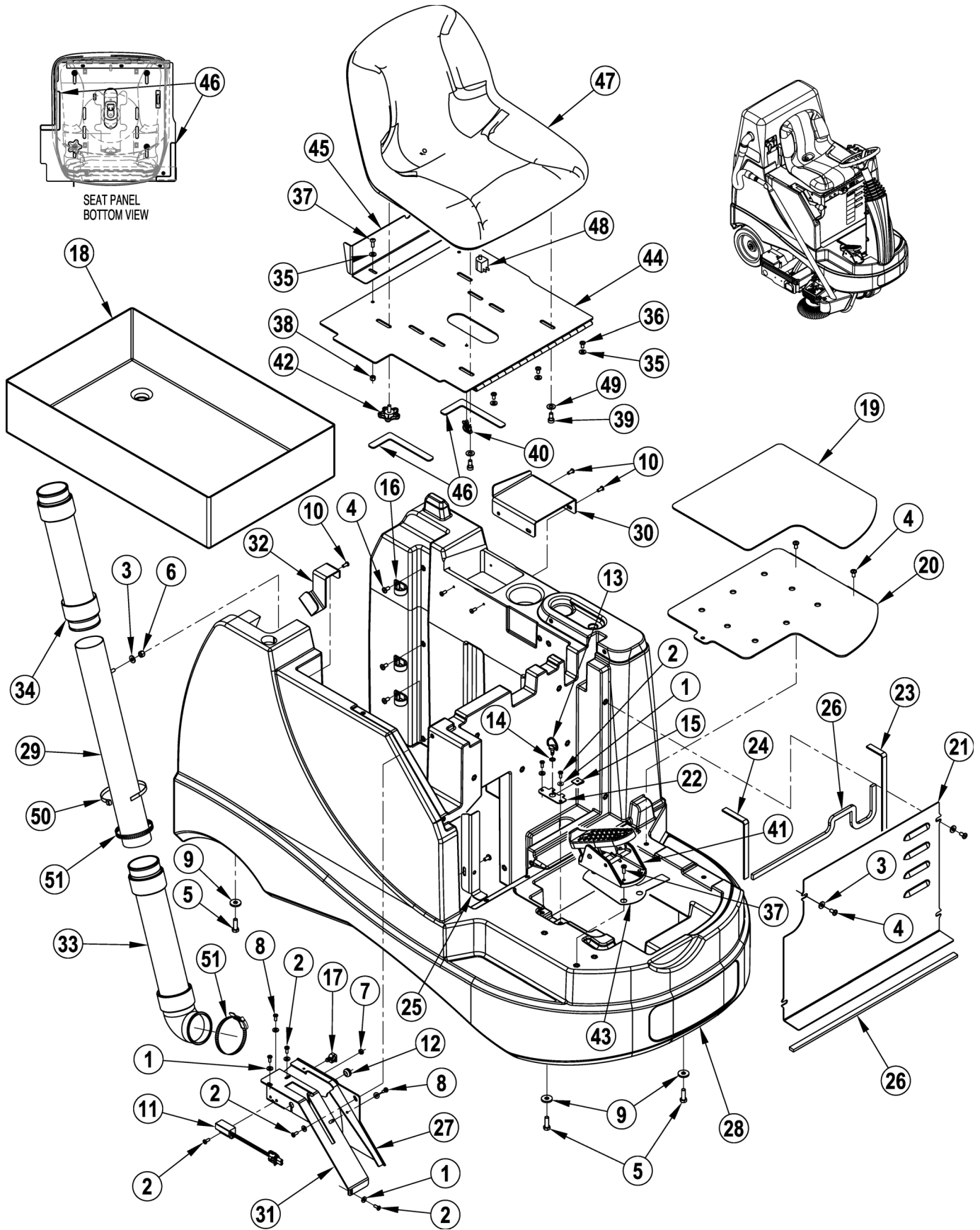
10-6

**VacRide™ 3400, 3400C****17**

Item	Ref. No.	Qty	Description
1	980195	1	Wave Washer 25/64 X 1 X 1/4
2	56001854	3	Scr, Hex 1/4-20 X .50
3	56001879	2	Wsh-Flt Sae 1/2
4	56001939	1	Wsh, Flt Sae 5/16
5	56001954	1	Wsh, Flt Sae #10
6	56003603	2	Scr, Pan Phil Thd Form ¼ -20 X .38
7	56002063	1	Wsh, Flt Sae 3/8
8	56002098	3	Wsh, Flt Sae 1/4
9	56002826	2	Nut, Hex Nyl Loc-Thin 5/16-18
10	56001993	1	Scr, Pan Phil 10-24 X .50
11	56003312	2	Nut, Hex Nyl Loc M12-1.75
12	56003415	2	Scr, Hex M12-1.75 X 35mm
13	56003427	1	Scr, Hex M5-0.8 X 20mm
14	56003441	3	Scr, Hex Loc M6-1 X 16mm
15	56003730	1	Scr, Soc Shd .38 X .25 X 5/16-18
16	56009082	4	Scr, Pan Phil Thd Form-Blk 10-24 X .50
17	56009086	2	Nut, Hex Jam 5/16-18
18	56305053	1	Sensor, Proximity (S7)
19	56185264	2	Bearing, Flange
20	56304126	1	Cable Assy
21	56314206	1	Gas Spring
22	56602263	1	Bracket
23	56602236	1	Rod-Threaded
24	56407303	1	Knob
25	56602082	1	Sidebroom Arm Weldment
26	56602092	1	Catch
27	56602096	1	Pin
28	56602099	1	Bushing .34 X .50 X 2.25
29	56602100	1	Strap Lock
30	56602119	1	Brush Sidebroom <b>NOTE 1</b>
31	56602171	1	Hub Weldment - Brush Drive
32	56602174	1	Bumper - Sidebroom
33	56602197	1	Strap
34	56630732	1	Spring, Extension
35	1459777000	1	Key
36	1464152000	1	Reduction Gearmotor 90- Right/24v (M9)
[ ]	1464166000	1	Brush Carbon W/Cover
37	56002832	1	Nut, Hex Nyl Loc-Thin 10-24

[ ] = Not Shown

**NOTE 1:** Cannot use any other brush.



09-10

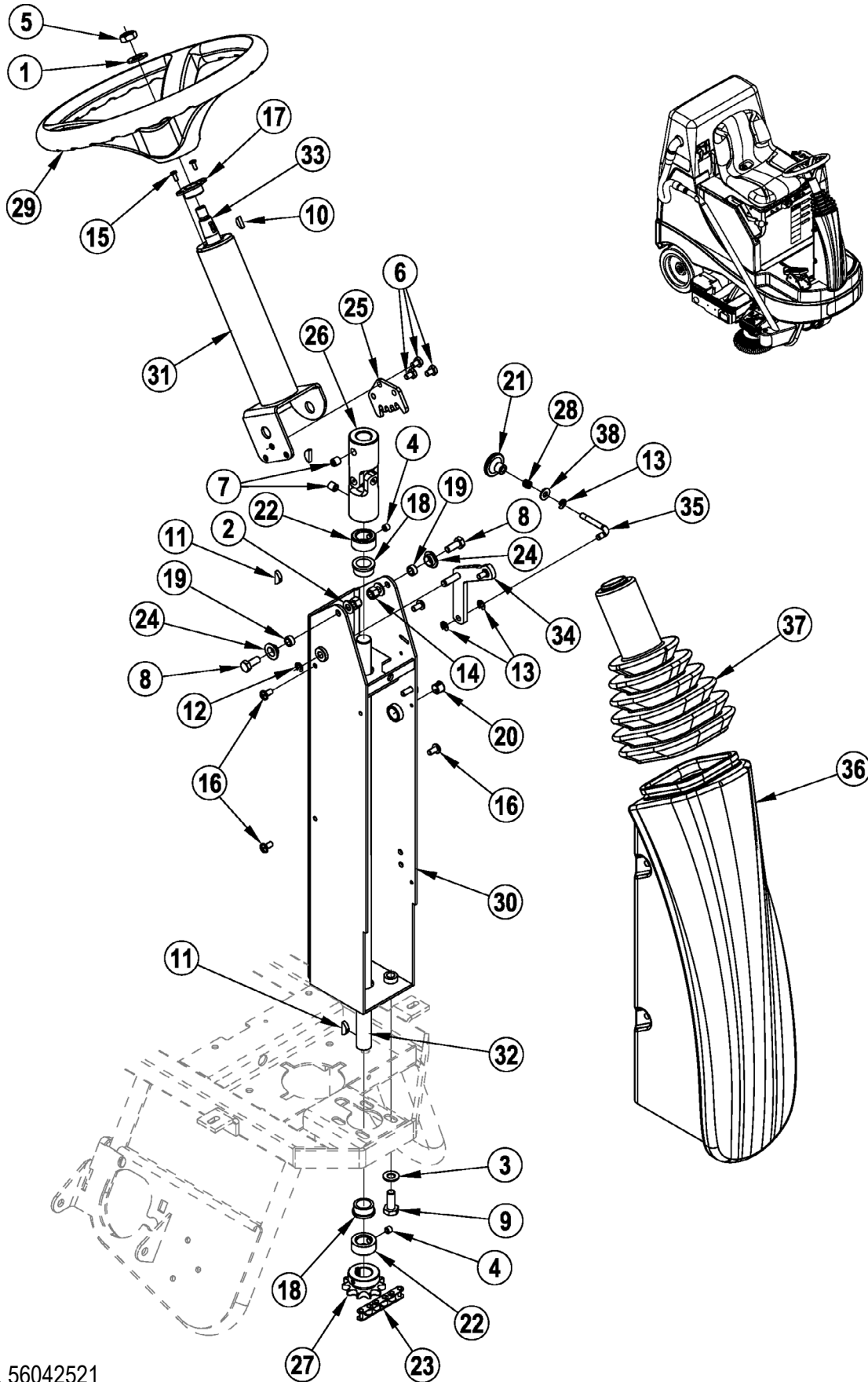
**SOLUTION SYSTEM**

09-12

**VacRide™ 3400, 3400C**

19

Item	Ref. No.	Qty	Description
1	56001954	8	Wsh, Flt Sae #10
2	56001993	7	Scr, Pan Phil 10-24 X .50
3	56002098	5	Wsh, Flt Sae 1/4
4	56002145	10	Scr, Pan Phil 1/4-20 X .50
5	56002221	4	Scr, Hex 5/16-18 X 1.00
6	56002708	1	Nut, Hex Nyl Loc 1/4-20
7	56002832	1	Nut, Hex Nyl Loc-Thin 10-24
8	56009029	2	Scr, Pan Phil Thd Form 10-24 X .50
9	56009122	4	Wsh, Flt .344 X .938 X .125
10	56009191	5	Scr, Pan Phil Plastite 10-14 X .50
11	56305053	1	Sensor, Proximity (S5)
12	56321540	1	Grommet
13	56380132	1	Latch, 1/4 Turn
14	56380137	1	Retainer
15	56380141	1	Nut, Clamp
16	56410097	3	Clamp, P
17	56507793	1	Clip, Conduit
18	56601213	1	Battery Box
19	56601246	1	Mat
20	56601339	1	Charger Cover Weldment
21	56601387	1	Electrical Cover Panel
22	56601511	1	Plate
23	56601569	1	Gasket
24	56601570	1	Gasket
25	56601670	1	Weldment - L Bracket
26	56601685	2	Gasket
27	56601714	1	Handle Cover Weld't
28	56602097	1	Solution Tank
29	56602098	1	Tube Weldment
30	56602110	1	Panel Accessory
31	56602116	1	Handle Cover-Top Panel
32	56602161	1	Bracket - Handle
33	56602189	1	Hose Assembly
34	56602194	1	Hose Assembly
35	56002098	6	Wsh, Flt Sae 1/4
36	56002145	3	Scr, Pan Phil 1/4-20 X .50
37	56002507	5	Scr, Pan Phil 1/4-20 X .75
38	56002708	2	Nut, Hex Nyl Loc 1/4-20
39	56003730	3	Scr, Soc Shd .38 X .25 X 5/16-18
40	56386407	1	Clip, Conduit
41	56601052	1	Footpedal Assy (R1)
42	56601271	1	Knob, 5/16 Stud
43	56601601	1	Footpedal Plate
44	56602134	1	Seat Panel Weldment
45	56602188	1	Bracket
46	56602245	2	Pad-Panel
47	8-69-00022	1	Seat
48	7-82-00050	1	Switch (S2)
49	56002063	3	Wsh, Flt Sae 3/8
50	56477613	1	Tie, Cable
51	56602257	2	Ratchet Lock Band



09-10

**STEERING COLUMN ASSEMBLY**

10-6

**VacRide™ 3400, 3400C****21**

Item	Ref. No.	Qty	Description
1	56001879	1	Wsh-Flt Sae 1/2
2	56001939	2	Wsh, Flt Sae 5/16
3	56002063	4	Wsh, Flt Sae 3/8
4	56002086	2	Scr, Soc Set Loc 5/16-18 X .25
5	56002843	1	Nut, Hex Nyl Loc-Thin 1/2-13
6	56002933	3	Scr,Hex Hd Loc 1/4-20x.38
7	56003081	2	Scr, Soc Set Loc 3/8-16 X .38
8	56003179	2	Scr, Hex Thd To Hd M8-1.25 X 20mm
9	56003186	4	Scr, Hex Thd To Hd M10-1.5 X 25mm
10	56003227	1	Key, Wdf .62 X .19
11	56003228	3	Key, Wdf .75 X .19
12	56003261	1	Ring, Ret Ext Type E 0.31 Dia
13	56003268	3	Ring, Ret Ext Type E Reinf. 0.25 Dia
14	56003389	2	Nut, Hex Nyl Loc M8-1.25
15	56009051	2	Scr, Pan Phil Thd Form 8-32 X .38
16	56009062	4	Scr, Pan Phil Thd Form 1/4-20 X .50
17	56100393	1	Bushing
18	56250414	2	Bearing, Flange
19	56320595	2	Bushing .32x.50x.28
20	56601683	1	Plug - Cap
21	56362778	1	Knob
22	56367095	2	Collar, Shaft
23	56412198	1	Chain, Roller
24	56413211	2	Bearing, Flange .625 X .500 X .250
25	56413658	1	Ratchet, Steering Column
26	56454081	1	Universal Joint
27	56471148	1	Sprocket
28	56578222	1	Spring, Compression
29	56601060	1	Steering Wheel
30	56601163	1	Column Weldment
31	56601169	1	Upper Column Weldment
32	56601223	1	Shaft,Lower Steering
33	56601224	1	Shaft,Upper Steering
34	56601284	1	Steering Pawl Weldment
35	56601292	1	Pull Lever
36	56601484	1	Shroud, Lower Column
37	56601500	1	Boot, Steering

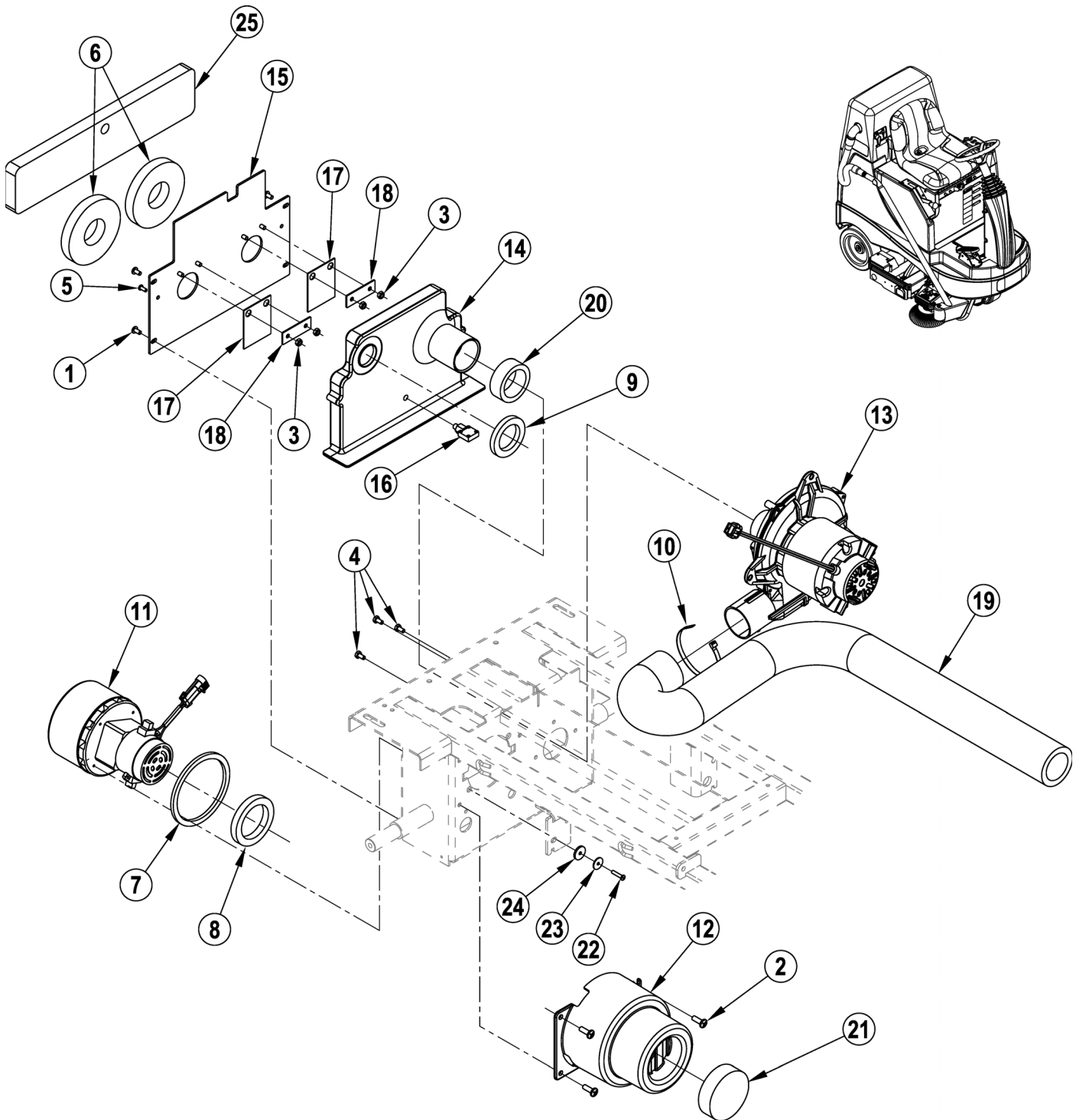
VACUUM FAN ASSEMBLY

09-10

22

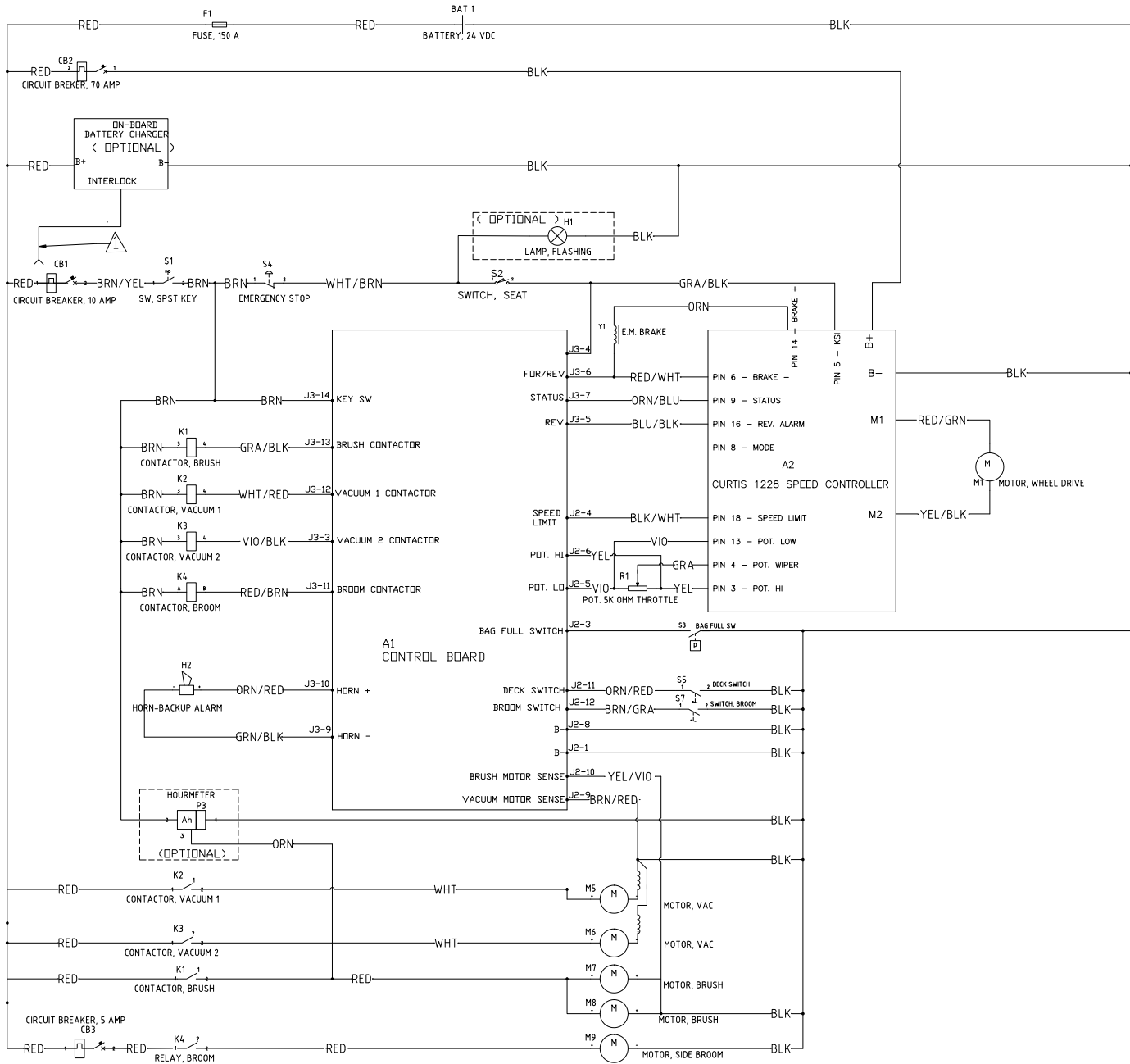
VacRide™ 3400, 3400C

10-1



Item	Ref. No.	Qty	Description
1	56002145	4	Scr, Pan Phil 1/4-20 X .50
2	56002507	3	Scr, Pan Phil 1/4-20 X .75
3	56002840	5	Nut, Hex Nyl Loc-Thin 1/4-20
4	56003812	3	Scr, Hex Type 25 1/4-14 X 1.00
5	56009191	2	Scr, Pan Phil Plastite 10-14 X .50
6	56602261	2	Gasket
7	56212143	1	Gasket, Vacuum Duct
8	56314760	1	Gasket, Vacuum Duct
9	56397307	1	Gasket, Vac
10	56477613	1	Tie, Cable
11	56601132	1	Motor, Vac 24vdc <b>(M6)</b>
[ ]	56397098	1	Carbon Brush Set Of 2
12	56602018	1	Cover Vac Motor
13	56602038	1	Motor Vac 24v Tang <b>(M5)</b>
[ ]	56602136	1	Carbon Brush Set Of 2
14	56602039	1	Panel Vac
15	56602040	1	Cover Vac Panel
16	56602048	1	Switch Vacuum <b>(S3)</b>
17	56602074	2	Flapper
18	56602112	2	Strap
19	56602147	1	Foam Tube Assy
20	56602240	1	Gasket
21	9096672000	1	Filter
22	962954	4	Screw, 10-16 X 1, P.H. Hi-Lo.
23	56009096	4	Wsh, Flt .193 X .875 X .060
24	56111384	4	Bushing
25	56602247	1	Foam Pad

[ ] = Not Shown



<b>Item</b>	<b>Ref. No.</b>	<b>Qty</b>	<b>Description</b>
A1	56602105	1	Interface Panel Assembly
A2	56601061	1	Controller, Speed
BAT	N/A		Battery
CB1	56507644	1	Circuit Breaker, 10 Amp
CB2	56454429	1	Circuit Breaker, 70 Amp
CB3	56315255	1	Circuit Breaker, 5 Amp
F1	56412089	1	Fuse, 150 Amp
H1	56307166	1	Beacon, Warning <b>(optional)</b>
H2	56412177	1	Horn/Backup Alarm
K1	56412179	1	Contactora, 24 Vdc
K2	56601183	2	Contactora 24v, 100 Amp
K3	56601183	2	Contactora 24v, 100 Amp
K4	56396286	1	Relay,Spst, 24v
M1	56601050	1	Motor / Drive Wheel
M5	56602038	1	Motor Vac 24v Tang
M6	56601132	1	Motor, Vac 24vdc
M7	56315061	2	Motor-24 Vdc .5 Hp 1800 Rpm <b>TSBUS2010-1058</b>
M8	56315061	2	Motor-24 Vdc .5 Hp 1800 Rpm <b>TSBUS2010-1058</b>
M9	1464152000	1	Reduction Gearmotor 90- Right/24v
R1	N/A	1	Part of Footpedal Assy 56601052
S1	56303553	1	Ket Switch
S2	7-82-00050	1	Switch
S4	56407130	1	Disconnect, Emergency
S5	56305053	1	Sensor, Proximity
S7	56172088	1	Switch, Snap, Spst No
Y1	56601507	1	Brake, Electromagnetic
	56315124	1	Charger, On-Board 24v <b>TSBUS2008-984</b>

**OPTIONAL KITS AND ACCESSORIES**

09-10

**26**

**VacRide™ 3400, 3400C**

10-10

Item	Ref. No.	Qty	Description
<b>Kits</b>			
*	56397453	1	Kit-Battery Fill Indicator
*	7-03-04249	1	Kit-Seat Armrests
*	56602125	1	Kit-Warning Beacon
*	56602180	1	Kit-Vacuum Wand With Caddy
*	56422162	1	Kit-Seat Belt
*	56601527	1	Battery Watering Kit
*	56302198	1	Kit-Hour Meter
*	56315732	1	Quiq Programmer Kit
*	56602067	1	Kit, Battery Roll Out
*	56602233	1	Interface Panel Kit
*	56602142	1	Bag – Cloth <b>NOTE 1</b>
*	56330608	1	Clip – Bag <b>NOTE 1</b>
*	56602167	1	Disposable Bag – 6 Pack

Replacement parts for the kits listed above can be found on each kit's associated instruction sheet.

**Brushes**

*	56602053	1	Brush Assembly
*	56602119	1	Brush Sidebroom

**Optional Batteries**

*	56391391	4	Battery, 6V, 305A/H <b>TSBUS2008-984</b>
*	56315959	4	Battery, 6V, 315A/H AGM <b>TSBUS2008-984</b>
*	56388582	4	Battery, 6V, 395A/H <b>TSBUS2008-984</b>

**Optional Battery Chargers**

*	56388109	A/R	Battery Charger, 24VDC, Auto, 25Amp, 120VAC/60HZ <b>TSBUS2008-984</b>
*	56412272	A/R	Battery Charger, 24VDC, Auto, 36Amp, 120VAC/60HZ <b>TSBUS2008-984</b>
*	56372203	A/R	Battery Charger, 24VDC, 20Amp, 230VAC/50HZ <b>TSBUS2008-984</b>
*	56412271	A/R	Battery Charger, 24VDC, 40Amp, 230VAC/50HZ <b>TSBUS2008-984</b>
*	56601095	A/R	Kit, On Board Charger, US <b>TSBUS2008-984</b>

**Accessories**

*	56409441	A/R	Programmer, 1311 User
*	56409823	A/R	Programmer Cable

\*# **DELETED**

\* = Optional, Not Included

# = Revised or new since last update

**NOTE 1:** One Bag Clip, part no. 56330608, is required for use with Cloth Bag, part no. 56602142.









14600 21st Avenue North  
Plymouth, MN 55447-3408

[www.advance-us.com](http://www.advance-us.com)

Phone: 800-989-2235

Fax: 800-989-6566

©2010 Nilfisk-Advance, Inc.

---

**A Nilfisk-Advance Brand**