



## Electronic Service Manuals

This electronic document is provided as a service to our customers. We do not create the contents of the information contained in this document. Should you have detailed questions pertaining to the information contained in this document, you may contact Michco, or the manufacturer which provided the original information in this electronic deliverable. Michco's only part in this electronic deliverable was the electronic assembly process.

You may contact Michco through the following methods:  
Phone (517) 484-9312 or (800) 331-3339 MI, OH, IN only  
2011 N. High St. -- Lansing, Michigan -- 48906  
Fax: (517) 484-9836  
Email: [CustServ@Michco.com](mailto:CustServ@Michco.com)  
Web site: [www.Michco.Com](http://www.Michco.Com)  
Parts Web site: [www.FloorMachineParts.Com](http://www.FloorMachineParts.Com)

Order Parts on Line at:  
**[www.FloorMachineParts.Com](http://www.FloorMachineParts.Com)**

Directly to Parts & Service:  
By Email: **[Shop@Michco.com](mailto:Shop@Michco.com)**  
By Fax: (517) 702-2041  
By Voice: Use numbers above.

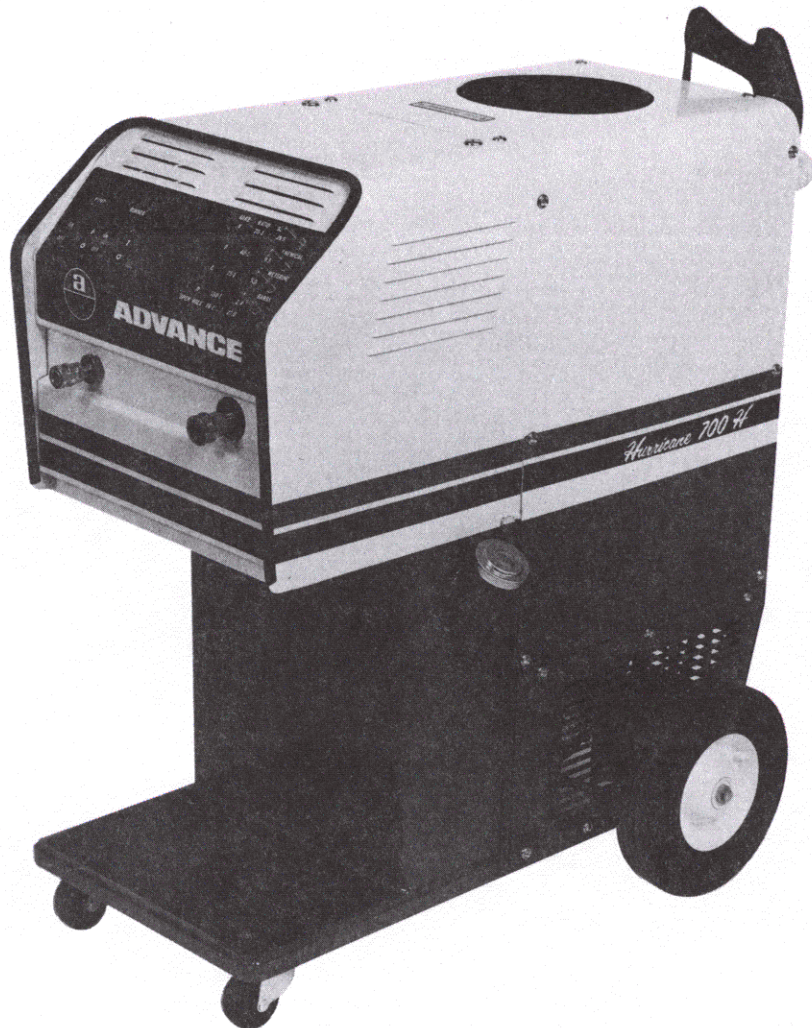
**Serving the Cleaning Industry Since 1922**

Notice: All copyrighted material remains property of original owners, all trademarks are property of respective owners. Manuals are subject to Manufacturer's reproduction limitations. Originals or reproductions were provided by manufacturers through a request. We make no warranty as to the correctness of information provided in this document and you assume all risk.

# HURRICANE MODELS 600HO, 700HO-7

THIS PARTS LIST IS FOR MACHINES  
AFTER SERIAL NUMBER 088 471

# PARTS LIST



**ADVANCE**  
**MACHINE COMPANY**

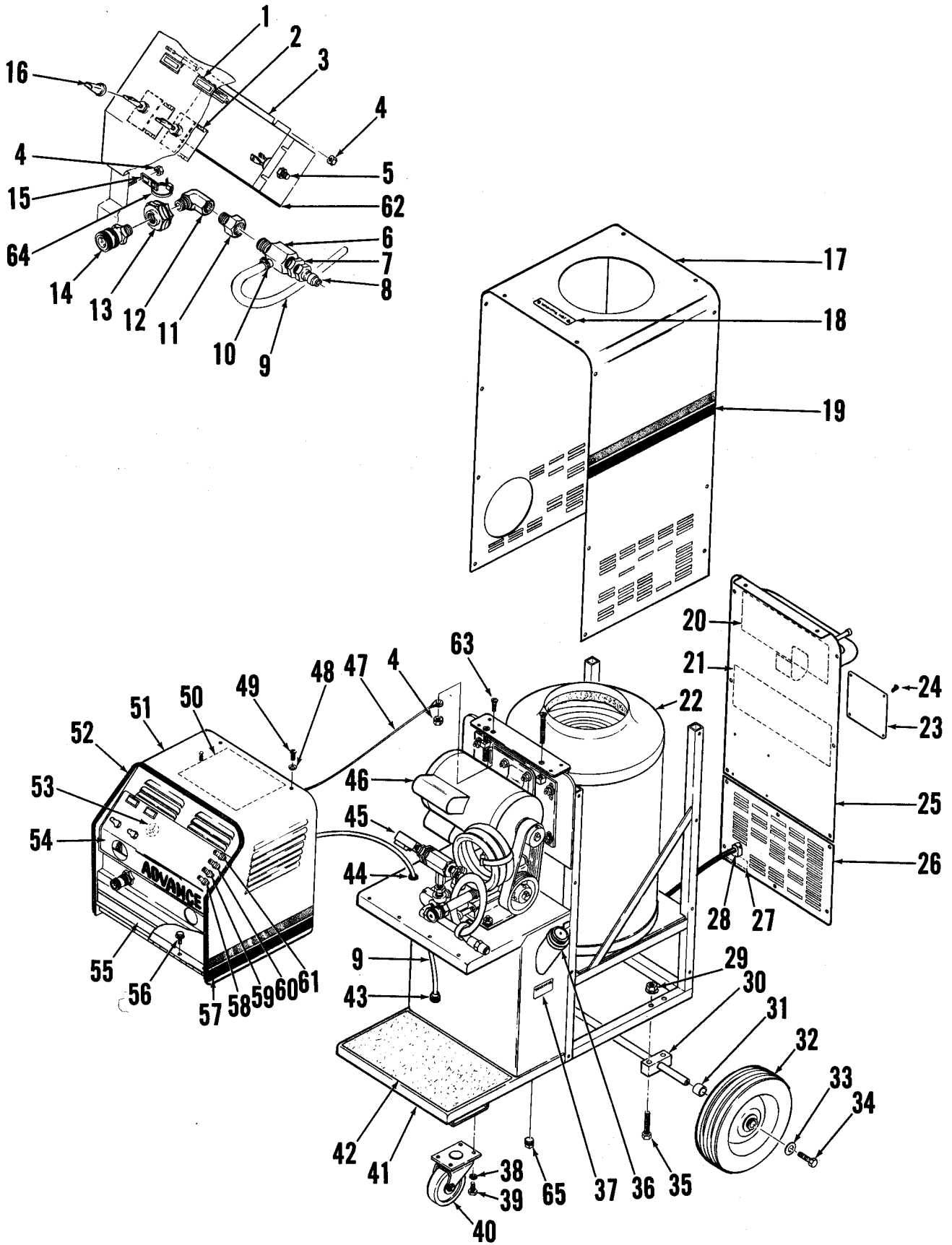
INTERNATIONAL HEADQUARTERS, Spring Park, Minnesota 55384-0275  
EUROPE, Llantrisant, Pontyclun, Mid-Glamorgan CF7 8YZ, Wales, United Kingdom  
CANADA, 1295 Crestlawn Drive, Mississauga, Ontario L4W 1A9



© 1986 Advance Machine Co. FORM NO. 042 152 3/86

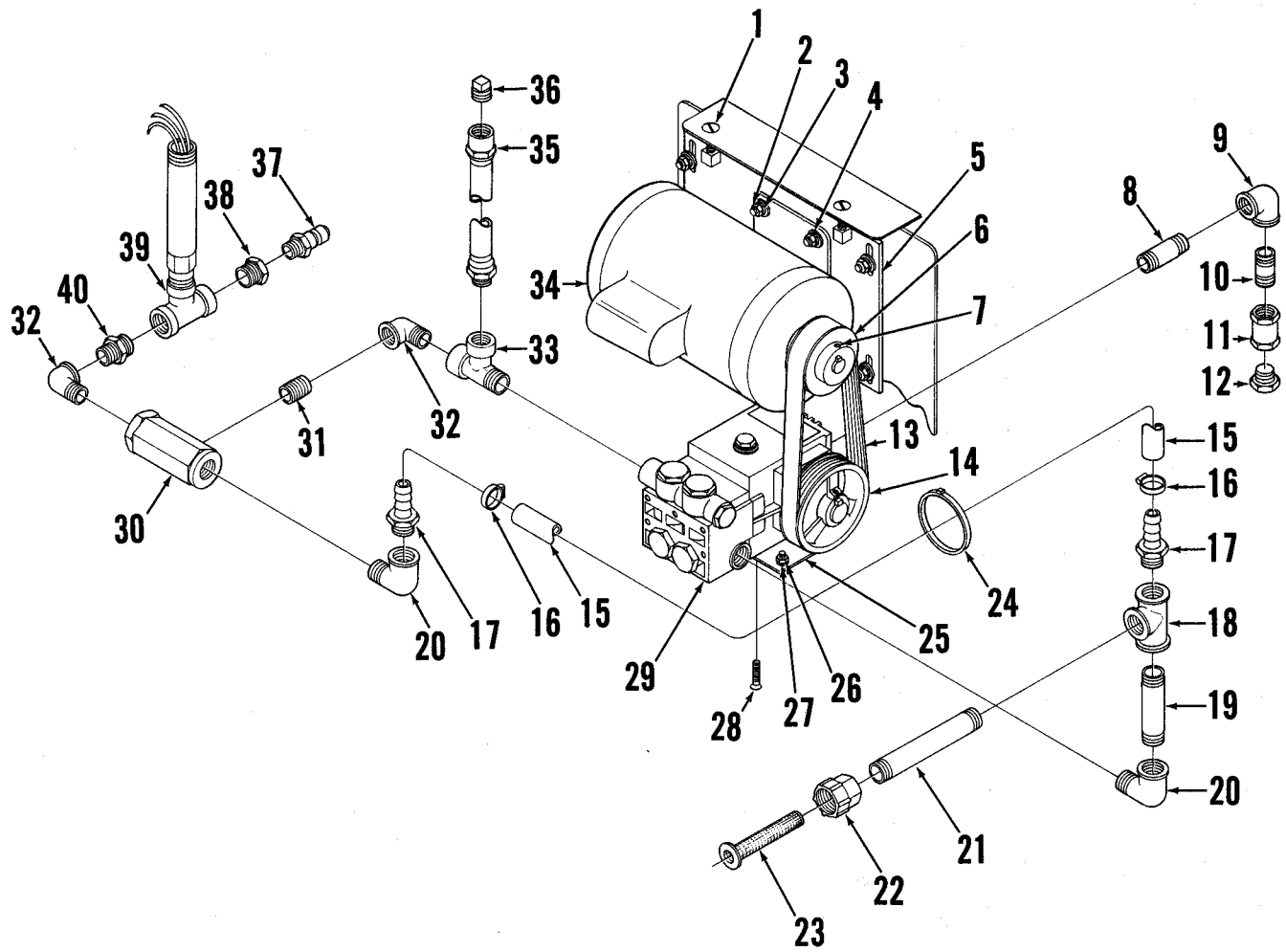
## INDEX FOR FORM NUMBER 042152

<u>Description</u>	<u>Location</u>	<u>Page</u>
Burner & Coil	E9	11
Outer Body	D12	1
Pump & Motor - 600HO	E1	3
Pump & Motor - 700HO	E5	7
Pump - 600HO	E3	5
Pump - 700HO	E7	9
Wand	E11	13
Wiring Diagram	E13	15



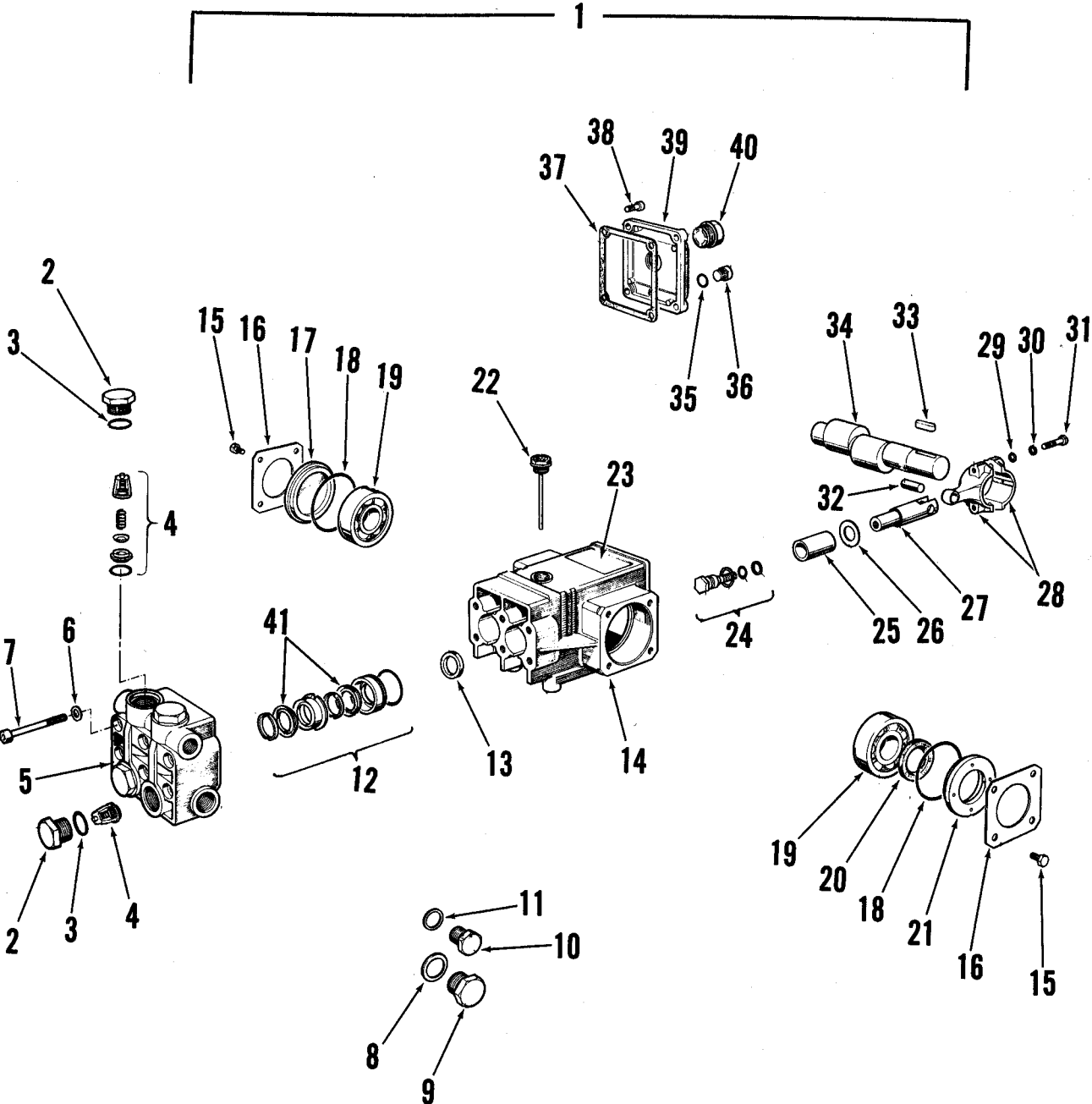
## HOUSING ASSEMBLY

#	PART NO	Q	DESCRIPTION	#	PART NO	Q	DESCRIPTION
1	249 527	2	INDICATOR LIGHT 600HO	58	755 242	1	BARB 600HO
	755 578	2	INDICATOR LIGHT 700HO		755 158	1	BARB 700HO
2	200 340	2	TOGGLE SWITCH	59	755 244	1	BARB 600HO
3	756 148	1	COVER		755 160	1	BARB 700HO
4		6	#10-24 WHIZ NUT	60	755 246	1	BARB 600HO
5	755 338	1	TRIAC		755 162	1	BARB 700HO
6	755 640	1	INJECTOR ASSY.	61	755 248	1	BARB 600HO
	755 512	1	INJECTOR		755 164	1	BARB 700HO
7	750 363	1	BUSHING	62	756 143	1	TRIM
8	761 645	1	QUICK DISCONNECT PLUG	63		1	#10-24 X .62 SCREW
9	742 994	1	TUBE	64	478 246	3	CABLE TIE
10	756 364	1	HOSE CLAMP	65	366 277	1	PIPE PLUG
11	759 072	1	ADAPTER	66	756 146	1	THERMOSTAT COVER *
12	369 632	1	ELBOW	67	756 157	1	THERMOSTAT 600HO *
13	745 543	1	ADAPTER		756 142	1	THERMOSTAT 700HO *
14	756 436	1	QUICK DISCONNECT SOCKET				* = not shown
15	469 832	2	TIE ANCHOR MOUNT				
16	756 514	2	TOGGLE SWITCH BOOT				
17	755 643	1	TOP COVER				
18	030 072	1	DECAL, WARNING				
19	030 317	2	DECAL, HURRICANE 600HO				
	030 334	2	DECAL, HURRICANE 700HO				
20	030 276	1	DECAL, WARNING				
21	030 344	1	DECAL, INSTRUCT. 600HO				
	030 020	1	DECAL, INSTRUCT. 700HO				
22	755 662	1	COIL SUB-ASSY.				
23	030 324	1	NAMEPLATE 600HO				
	030 338	1	NAMEPLATE 700HO				
24		4	#6-32 X .62 SCREW				
25	755 654	1	BACK PANEL				
26	755 631	1	LOWER BACK COVER				
27	030 096	1	DECAL, ELECTRIC WARNING				
28	328 818	1	STRAIN RELIEF				
29		4	5/16-18 WHIZ NUT				
30	755 687	1	AXLE				
31	755 658	2	SPACER				
32	752 045	2	WHEEL				
33		2	5/16 FLAT WASHER				
34		2	5/16-18 X .62 SCREW				
35		4	5/16-18 X 2.5 SCREW				
36	478 502	1	FUEL TANK CAP				
37	030 172	1	DECAL, WARNING				
38		8	1/4 LOCKWASHER				
39		8	1/4-20 X 1/2 SCREW				
40	340 081	2	SWIVEL CASTER				
41	755 614	1	FRAME				
42	755 633	1	BOTTOM MAT				
43	750 857	1	STRAINER				
44	467 171	1	GROMMET				
45	755 611	1	PUMP ASSY. 600HO				
	755 644	1	PUMP ASSY. 700HO				
46	755 619	1	MOTOR ASSY. 600HO				
	755 613	1	MOTOR ASSY. 700HO				
47	755 689	1	WIRE ROPE ASSY.				
48	449 340	34	FINISHING WASHER				
49		34	#10-32 X 1/2 SCREW				
50	030 341	1	DECAL, WIRING				
51	755 645	1	SHROUD ASSY. 600HO				
	755 641	1	SHROUD ASSY. 700HO				
	755 646	1	SHROUD				
52	755 156	1	TRIM				
53	014 119	1	DECAL, GROUND				
54	030 310	1	DECAL, ADVANCE 600HO				
	030 326	1	DECAL, ADVANCE 700HO				
55	030 264	1	DECAL, FRONT STRIPE				
56		5	#10-24 X 1/2 SCREW				
57	030 328	1	DECAL, LEFT STRIPE				
	030 330	1	DECAL, RIGHT STRIPE				



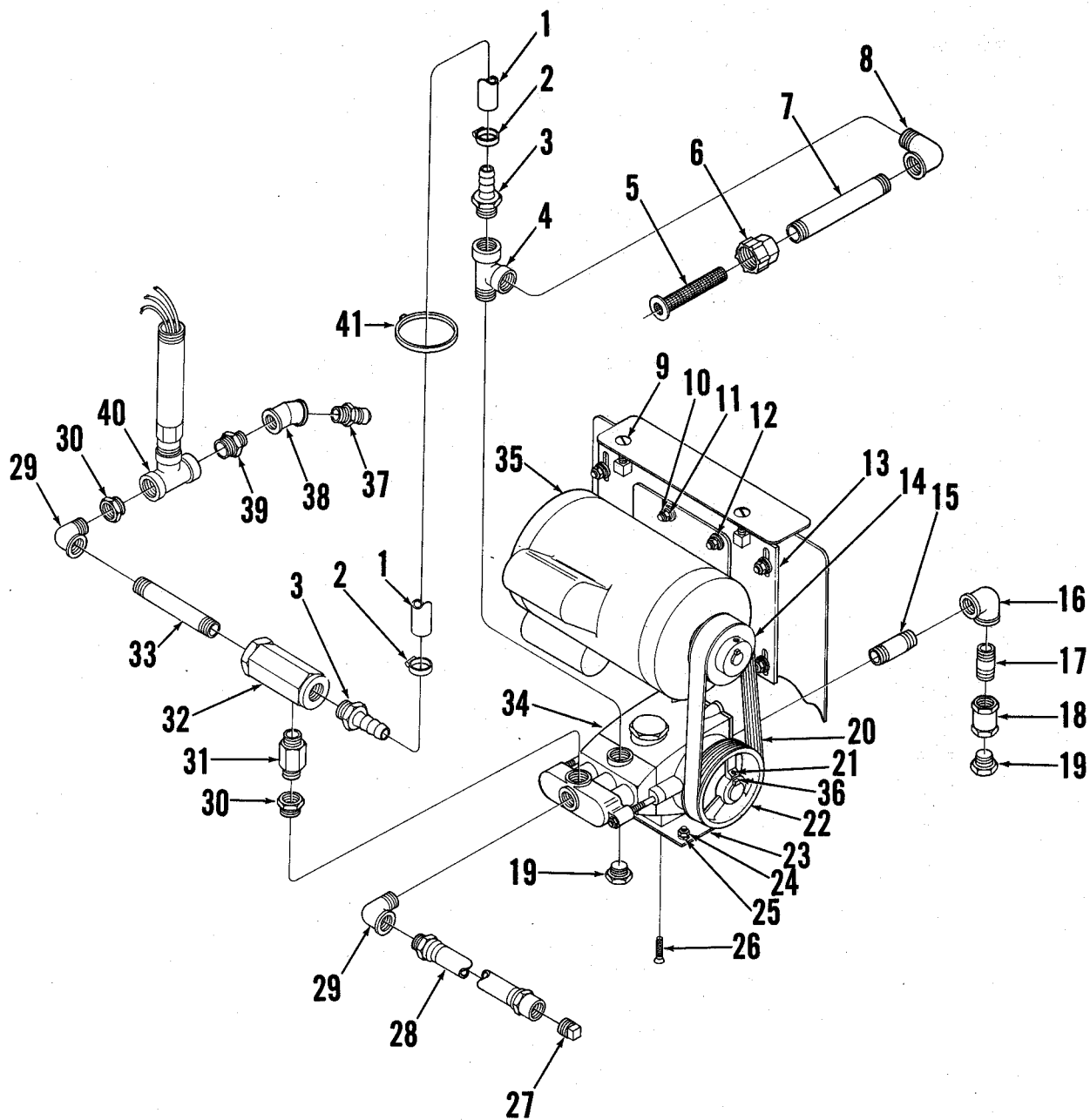
## PUMP &amp; MOTOR 600HO

#	PART NO.	Q	DESCRIPTION
1		2	5/16-18 x 2.75 SCREW
2		8	5/16-18 HEX NUT
3		8	5/16 LOCKWASHER
4		8	5/16 FLAT WASHER
5	755 321	1	MOTOR MOUNT
6	755 261	1	SHEAVE
7		4	SET SCREW
8	369 624	1	NIPPLE
9	340 782	1	ELBOW
10	750 688	1	NIPPLE
11	220 526	1	COUPLING
12	740 136	1	PIPE PLUG
13	755 263	1	BELT
14	755 260	1	SHEAVE
15	755 606	1	HOSE
16	219 932	2	HOSE CLAMP
17	118 117	2	BARB
18	749 244	1	TEE
19	749 258	1	NIPPLE
20	742 125	2	ELBOW
21	755 152	1	NIPPLE
22	740 152	1	ADAPTER
23	752 352	1	INLET FILTER
24	477 613	2	WIRE TIE
25	755 661	1	PUMP PLATE
26		4	1/4-20 HEX NUT
27		4	1/4 LOCKWASHER
28	755 264	4	SCREW
29	755 611	1	PUMP SUB-ASSY.
	755 256	1	PUMP
30	755 509	1	UNLOADER VALVE
31	752 730	1	NIPPLE
32	745 540	2	ELBOW
33	756 740	1	TEE
34	755 619	1	MOTOR SUB-ASSY.
	755 253	1	MOTOR
35	755 014	1	PULSE HOSE
36	744 580	1	PIPE PLUG
37	761 645	1	QUICK DISCONNECT
38	742 170	1	BUSHING
39	755 575	1	FLOW SWITCH
40	900 639	1	HEX NIPPLE



# PUMP ASSEMBLY 600HO

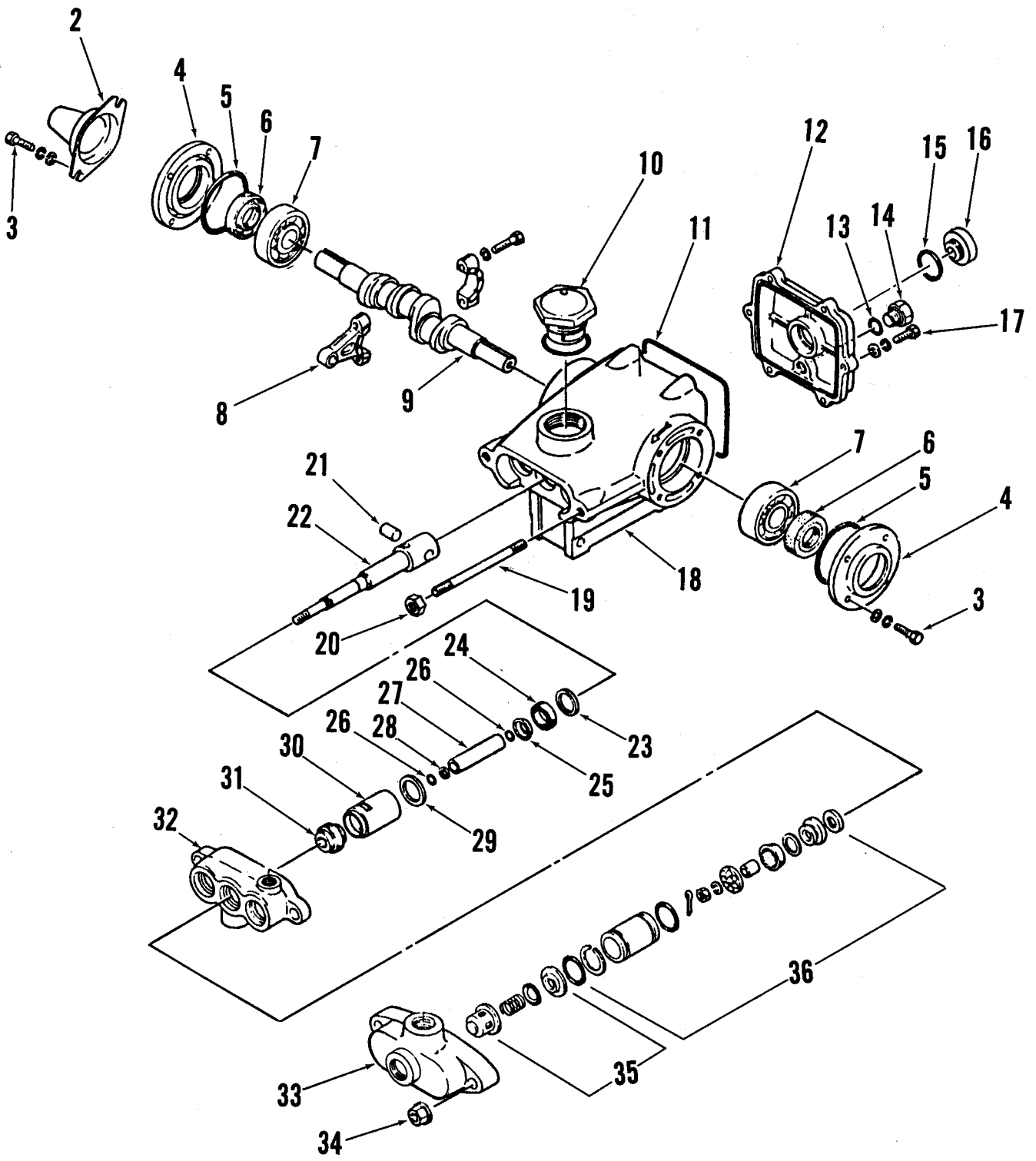
#	PART NO.	Q	DESCRIPTION
1	755 256	1	PUMP
2	759 900	4	PLUG
3	759 901	4	O-RING
4	759 902	4	VALVE UNIT ASSY.
5	759 903	1	PUMP HEAD
6	759 904	6	WASHER
7	759 905	6	SCREW
8	759 906	1	WASHER
9	759 907	1	PLUG
10	759 908	1	PLUG
11	759 909	1	WASHER
12	759 910	2	CYLINDER CUP ASSY.
13	759 911	2	OIL SEAL
14	759 912	1	CRANKCASE
15	759 913	8	SCREW
16	759 914	2	CRANKCASE COVER
17	759 915	1	SPACER
18	759 916	2	O-RING
19	759 917	2	BALL BEARING
20	759 918	1	OIL SEAL
21	759 919	1	SPACER
22	759 921	1	OIL DIP STICK
23	030 342	1	DECAL, ADVANCE
24	759 938	1	PISTON SCREW ASSY.
25	759 922	2	PISTON
26	759 923	2	WASHER
27	759 924	2	PISTON GUIDE
28	759 925	2	CONNECTING ROD
29	759 926	4	FLAT WASHER
30	759 927	4	LOCKWASHER
31	759 928	4	SCREW
32	759 929	2	PISTON PIN
33	759 930	1	KEY
34	759 931	1	CRANK SHAFT
35	759 932	1	O-RING
36	759 933	1	PLUG
37	759 934	1	COVER GASKET
38	759 935	4	SCREW
39	759 936	1	CRANKCASE COVER
40	759 937	1	OIL LEVEL INDICATOR
41	759 940	4	CUP



# PUMP & MOTOR 700HO-7

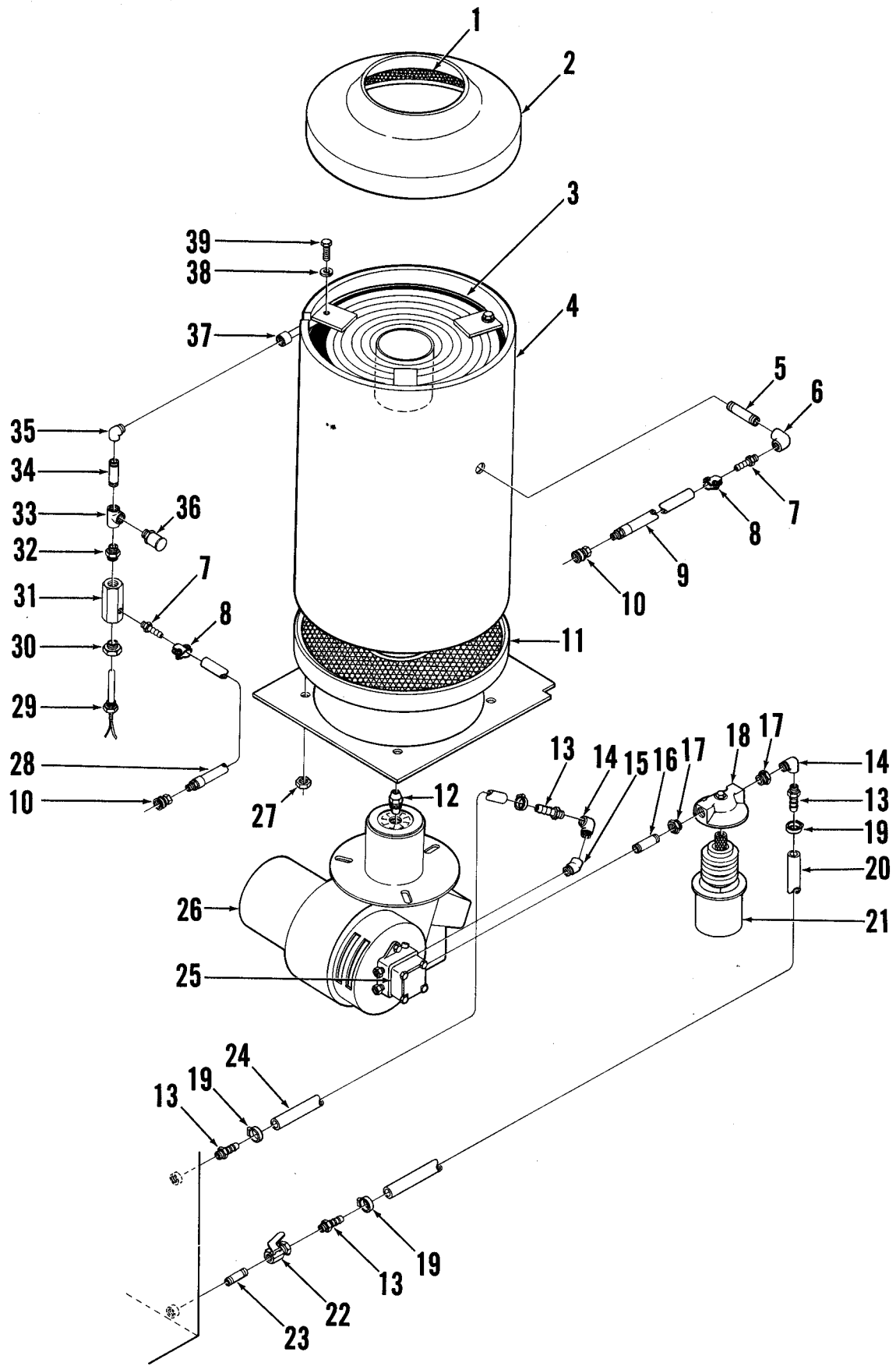
#	PART NO.	Q	DESCRIPTION
1	755 606	1	HOSE
2	219 932	2	HOSE CLAMP
3	118 117	2	BARB
4	749 319	1	TEE
5	752 352	1	INLET FILTER
6	740 152	1	ADAPTER
7	755 152	1	NIPPLE
8	742 125	1	ELBOW
9		2	5/16-18 X 2.75 SCREW
10		8	5/16-18 HEX NUT
11		8	5/16 LOCKWASHER
12		8	5/16 FLAT WASHER
13	755 321	1	MOTOR MOUNT
14	755 138	1	SHEAVE
15	753 725	1	NIPPLE
16	340 782	1	ELBOW
17	750 688	1	NIPPLE
18	220 526	1	COUPLING
19	740 136	2	PIPE PLUG
20	755 238	1	BELT
21		4	SET SCREW
22	755 140	1	SHEAVE
23	755 694	1	PUMP PLATE
24		4	1/4-20 HEX NUT
25		4	1/4 LOCKWASHER
26	755 675	4	SCREW
27	744 580	1	PIPE PLUG
28	755 014	1	PULSE HOSE
29	245 540	2	ELBOW
30	751 687	2	BUSHING
31	755 565	1	HEX NIPPLE
32	755 509	1	UNLOADER VALVE TSB 483, G-9
33	745 650	1	NIPPLE
34	755 644	1	PUMP SUB-ASSY.
	755 148	1	PUMP
35	755 613	1	MOTOR SUB-ASSY.
	755 405	1	MOTOR
36	755 554	1	KEY
37	761 645	1	QUICK DISCONNECT
38	749 715	1	ELBOW
39	742 173	1	NIPPLE
40	755 575	1	FLOW SWITCH
41	477 613	2	CABLE TIE

1



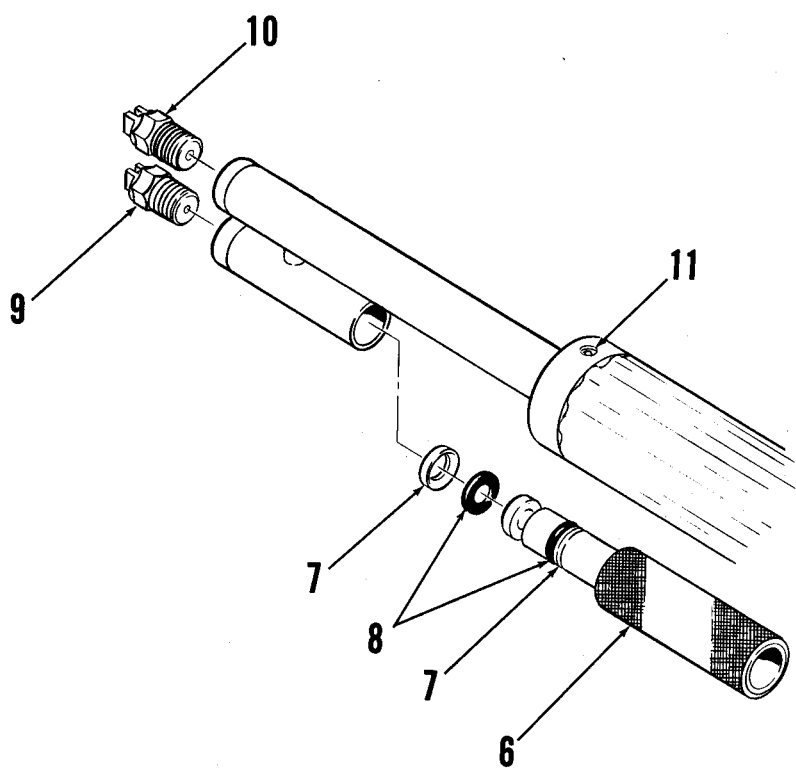
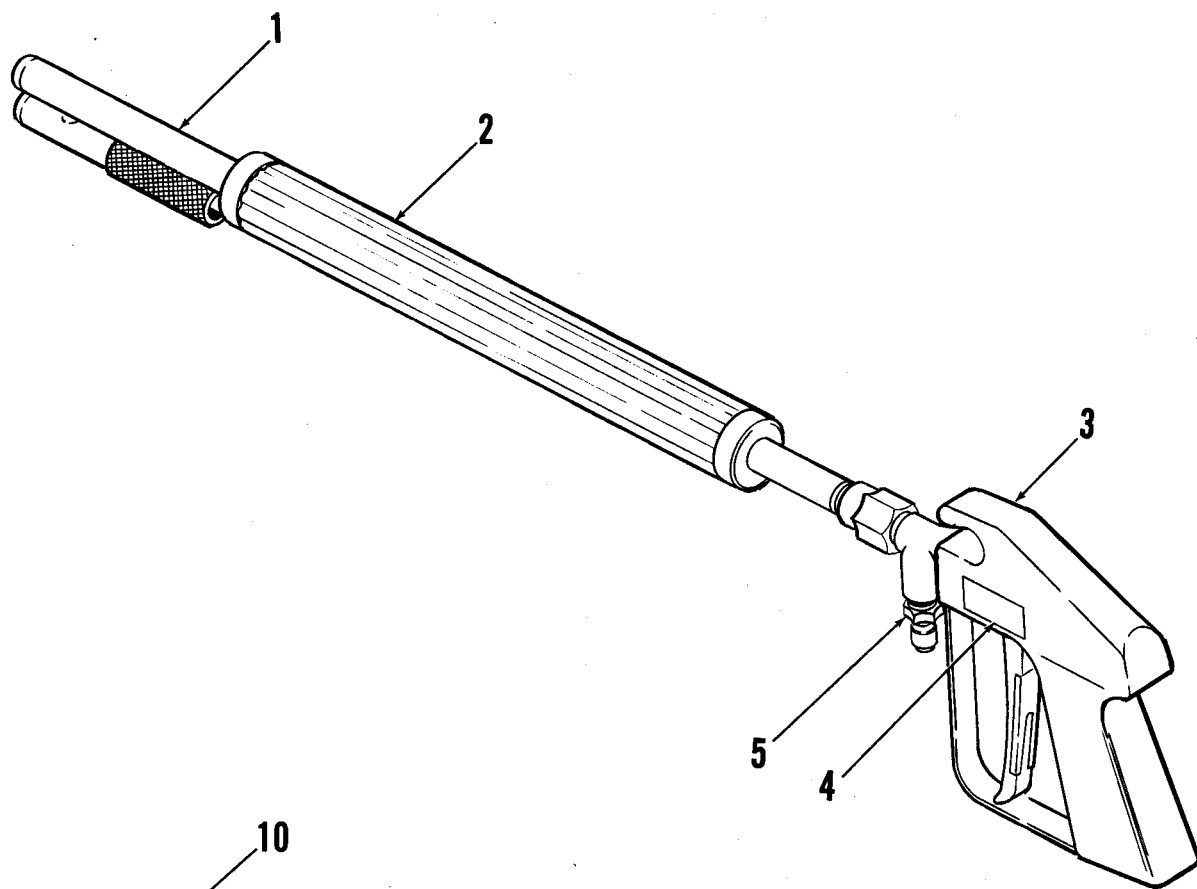
# PUMP ASSEMBLY 700HO-7

#	PART NO.	Q	DESCRIPTION
1	755 148	1	PUMP ASSY.
2	755 998	1	SHAFT PROTECTOR
3	755 988	8	SCREW W/ WASHERS
4	755 955	2	OIL SEAL CASE
5	755 948	2	O-RING
6	755 954	2	OIL SEAL
7	755 950	2	BEARING
8	755 989	3	CONNECTING ROD
9	755 987	1	CRANKSHAFT
10	755 957	1	OIL FILTER CAP
11	755 934	1	O-RING
12	755 983	1	CRANKCASE COVER
13	755 962	1	O-RING
14	755 985	1	DRAIN PLUG
15	755 929	1	OIL GAUGE O-RING
16	755 984	1	OIL GAUGE
17	755 986	6	SCREW W/ WASHERS
18	755 981	1	CRANKCASE
19	755 982	2	STUD
20	755 930	2	HEX NUT
21	755 942	3	PISTON PIN
22	755 990	3	PISTON ROD
23	755 940	3	SEAL WASHER
24	755 991	3	OIL SEAL
25	755 992	3	BARRIER SLINGER
26	755 953	6	SLEEVE O-RING
27	755 965	3	SLEEVE
28	755 964	3	BACK-UP RING
29	755 938	3	SEAL WASHER
30	755 993	3	RETAINER SEAL
31	755 905	3	PRRRM-A-LUBE SEAL KIT
32	755 994	1	INLET MANIFOLD
33	755 997	1	DISCHARGE MANIFOLD
34	755 966	2	HEX NUT
35	755 904	3	DISCHARGE VALVE KIT
36	755 980	3	HI-PRESSURE PISTON KIT



# COIL ASSEMBLY

#	PART NO.	Q	DESCRIPTION
1	755 680	1	TOP INSULATION
2	755 670	1	COLLECTOR
3	755 678	1	INSULATION WRAP
4	755 674	1	COIL WRAP
5	755 669	1	NIPPLE
6	340 782	1	ELBOW
7	743 012	2	BARB
8	741 321	2	HOSE CLAMP
9	760 390	1	HOSE ASSY.
10	740 125	2	QUICK DISCONNECT SOCKET
11	755 682	1	DISC
12	750 258	1	BURNER NOZZLE 600HO
	755 696	1	BURNER NOZZLE 700HO
13	752 339	4	BARB
14	369 632	2	ELBOW
15	368 938	1	ELBOW
16	745 597	1	NIPPLE
17	750 363	2	BUSHING
18	752 259	1	FUEL FILTER
19	756 364	4	HOSE CLAMP
20	752 346	1	FUEL LINE
21	752 255	1	FUEL FILTER CARTRIDGE
22	745 649	1	TWO-WAY VALVE
23	750 688	1	NIPPLE
24	755 728	1	TUBE
25	752 145	1	FUEL PUMP
26	752 147	1	BURNER MOTOR 600HO
	752 114	1	OIL BURNER 600HO
	752 153	1	BURNER MOTOR 700HO
	752 115	1	OIL BURNER 700HO
27		7	5/16-18 HEX NUT
28	760 086	1	HOSE ASSY.
29	756 147	1	PROBE ASSY.
30	753 006	1	BUSHING
31	755 879	1	TEE
32	753 830	1	NIPPLE
33	249 819	1	TEE
34	753 725	1	NIPPLE
35	369 632	1	ELBOW
36	755 873	1	POP-OFF VALVE
37	755 662	1	COIL ASSY.
	755 664	1	COIL
38		3	5/16 LOCKWASHER
39		3	5/16-18 X .62 SCREW

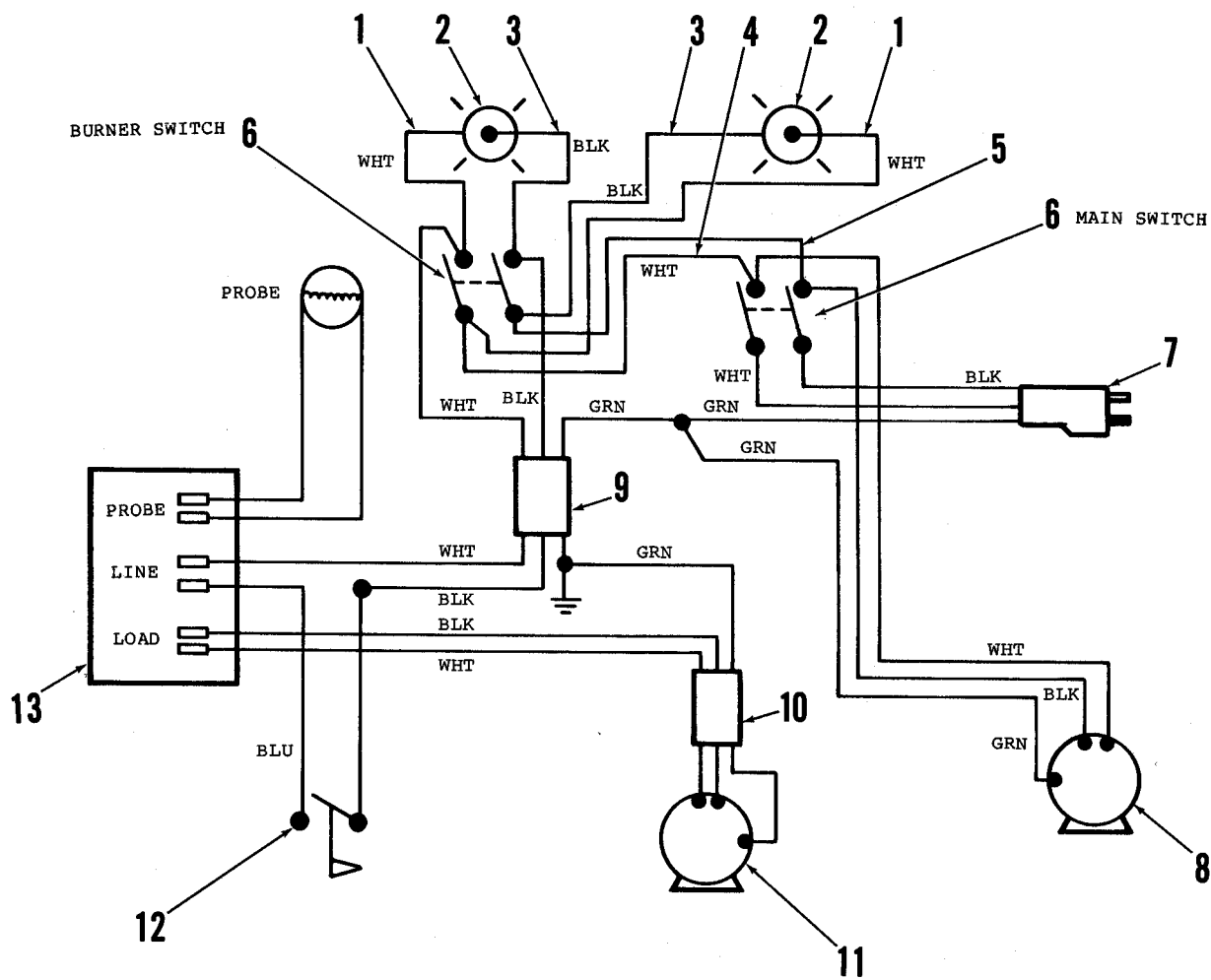


# WAND ASSEMBLY

#	PART NO.	Q	DESCRIPTION
1	761 654	1	WAND
2	761 646	1	HANDLE
3	761 706	1	SPRAY GUN 1200 PSI
4	030 228	1	DECAL, SPRAY WAND
5	761 645	1	QUICK DISCONNECT
6	761 606	1	PISTON
7	761 323	2	BACK-UP RING
8	761 325	2	O-RING
9	761 680	1	NOZZLE 4030 YELLOW
10	747 062	1	NOZZLE 1506 BLACK 600HO
	747 015	1	NOZZLE 1507 BLUE 700HO
11		4	SET SCREW

SEE TSB 453, G-10

*Replacement Wand Assembly TSB 605-68*



WHT = WHITE  
 BLK = BLACK  
 GRN = GREEN  
 BLU = BLUE

**WIRING DIAGRAM**

#	PART NO.	Q	DESCRIPTION
1	756 152	2	WIRE ASSY.
2	249 527	2	INDICATOR LIGHT 600HO
	755 578	2	INDICATOR LIGHT 700HO
3	756 151	2	WIRE ASSY.
4	756 153	1	WIRE ASSY.
5	755 846	1	WIRE ASSY.
6	200 340	2	SWITCH
7	755 186	1	POWER CORD 600HO
	755 681	1	POWER CORD 700HO
8	755 253	1	PUMP MOTOR 600HO
	755 405	1	PUMP MOTOR 700HO
9	756 154	1	CORD ASSY.
10	755 705	1	CORD ASSY.
11	752 114	1	BURNER MOTOR 600HO
	752 115	1	BURNER MOTOR 700HO
12	755 575	1	FLOW SWITCH
13	756 157	1	THERMOSTAT 600HO
	756 142	1	THERMOSTAT 700HO