



Electronic Service Manuals

This electronic document is provided as a service to our customers. We do not create the contents of the information contained in this document. Should you have detailed questions pertaining to the information contained in this document, you may contact Michco, or the manufacturer which provided the original information in this electronic deliverable. Michco's only part in this electronic deliverable was the electronic assembly process.

You may contact Michco through the following methods:
Phone (517) 484-9312 or (800) 331-3339 MI, OH, IN only
2011 N. High St. -- Lansing, Michigan -- 48906
Fax: (517) 484-9836
Email: CustServ@Michco.com
Web site: www.Michco.Com
Parts Web site: www.FloorMachineParts.Com

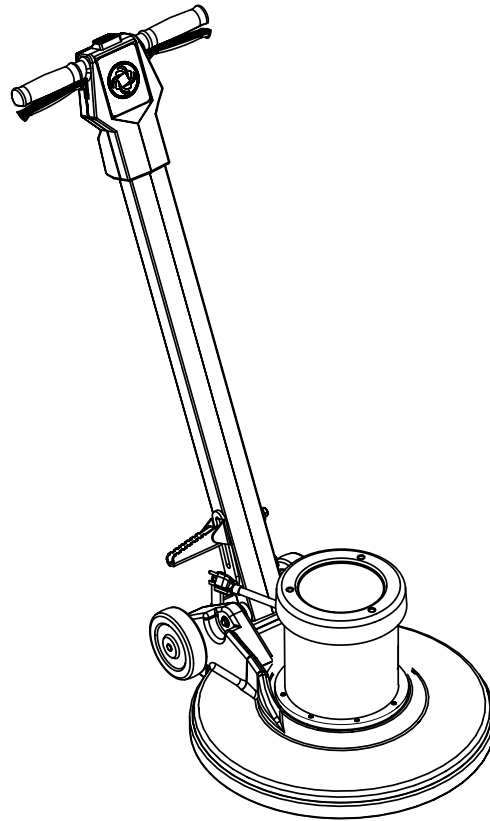
Order Parts on Line at:
www.FloorMachineParts.Com

Directly to Parts & Service:
By Email: **Shop@Michco.com**
By Fax: (517) 702-2041
By Voice: Use numbers above.

Serving the Cleaning Industry Since 1922

Notice: All copyrighted material remains property of original owners, all trademarks are property of respective owners. Manuals are subject to Manufacturer's reproduction limitations. Originals or reproductions were provided by manufacturers through a request. We make no warranty as to the correctness of information provided in this document and you assume all risk.

SD 17 / 20



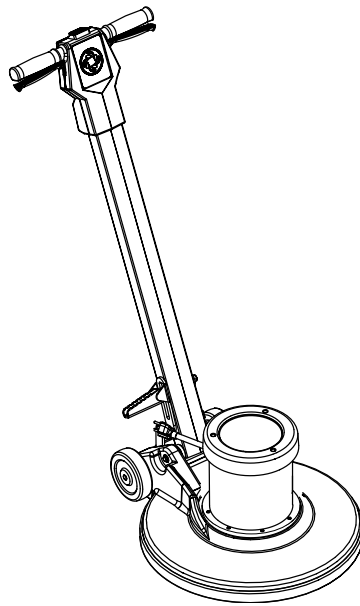
PARTS LIST

Advance MODELS 56201640, 56201641



Advance
by Nilfisk-Advance

5/99 revised 12/01 FORM NO. 56042366



DESCRIPTION	PAGE
HANDLE SYSTEM	2-3
BASE SYSTEM	4-5
WIRING DIAGRAM	5
HANDLE TANK KIT	6-7

WHEN ORDERING PARTS

- * Use the 8 digit numbers from the "Ref. No." columns in this parts list.
- * Specify the model and serial number of the machine.
- * Use the space below to record the model and serial number for future reference.

Model _____ Serial No. _____

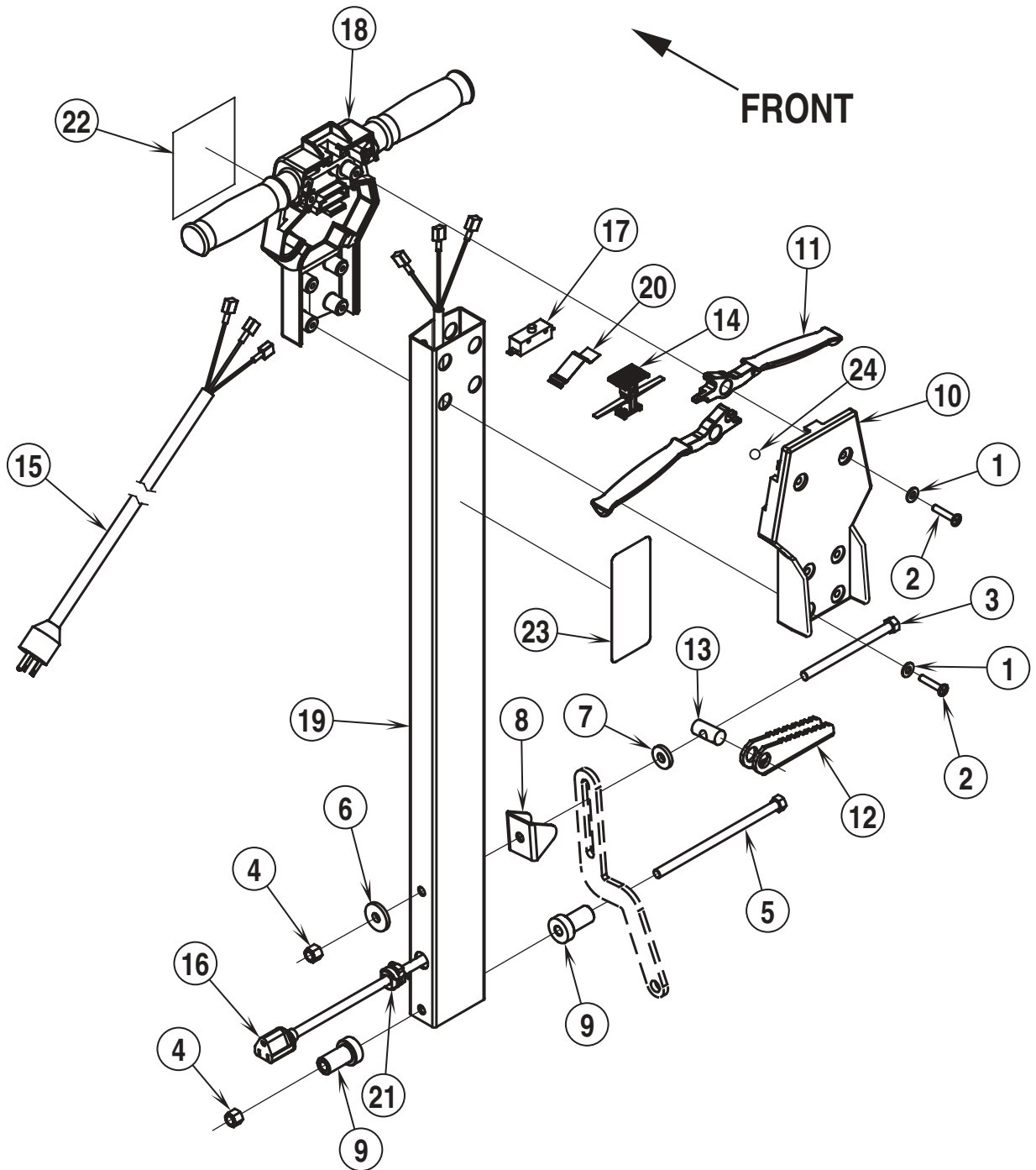
HANDLE SYSTEM

99-5

2

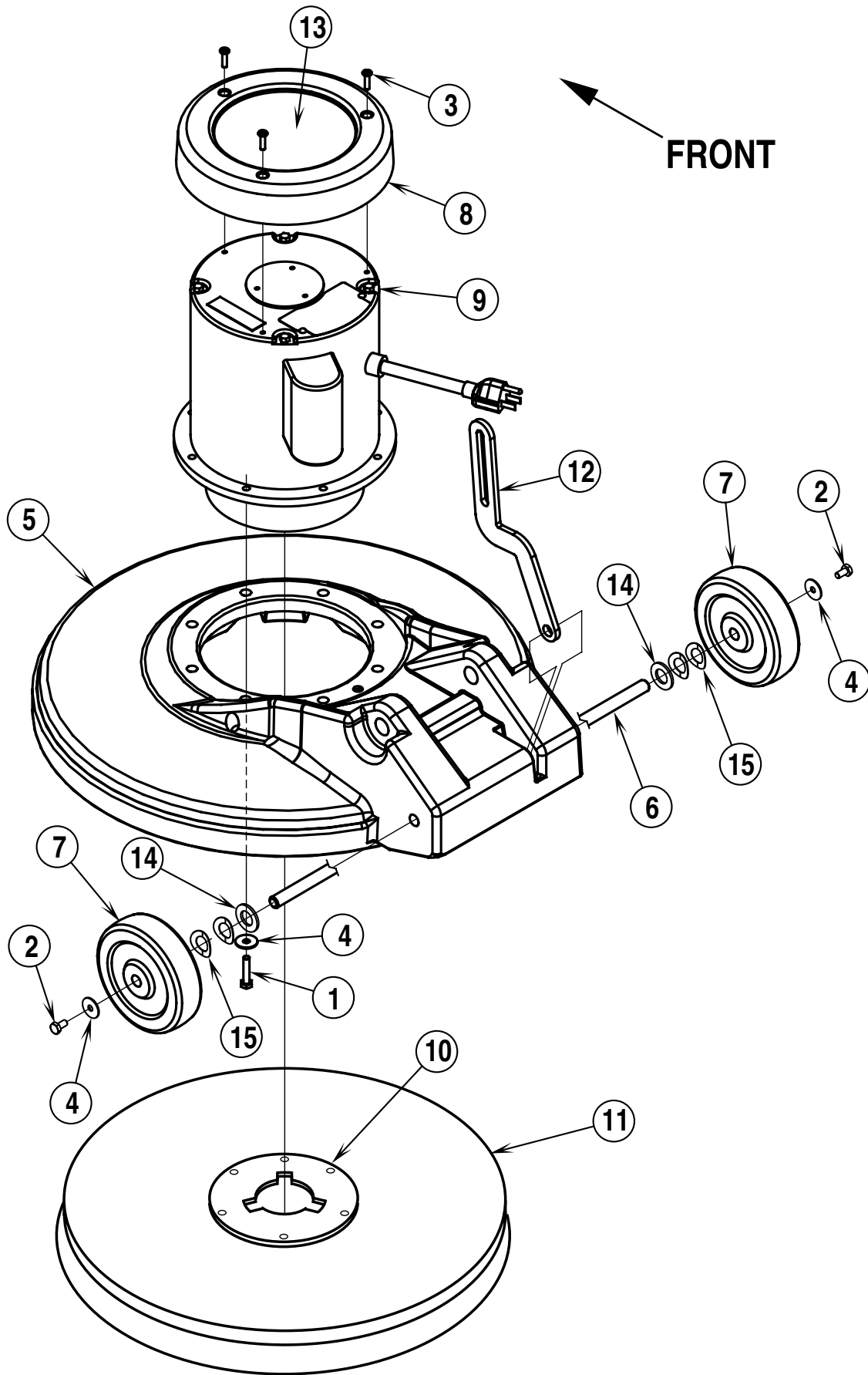
SD 17 / SD 20

01-12



99-5	HANDLE SYSTEM		
01-12	SD 17 / SD 20		3

Item	Ref. No.	Qty	Description
1	56002098	6	Wsh, Flt SAE 1/4
2	56002292	6	Scr, Pan Phil 1/4-20 x 1.00
3	56002506	1	Scr, Hex Hd 3/8-16 x 5.00
4	56002769	2	Nut, Hex Nyl Loc 3/8-16
5	56002777	1	Scr, Hex Hd 3/8-16 x 7.00
6	56009195	1	Wsh, Flt .406 x 1.25 x .164
7	56009196	1	Wsh, Flt Harden .407 x 1.00 x .164
8	56201015	1	Bracket
9	56201016	2	Bushing
10	56201026	1	Handle Cover
11	56201027	2	Handle Lever
12	56201028	1	Latch Arm
13	56201029	1	Pin
14	56201031	1	Button, Lock
15	56201032	1	Cord Set, 14/3 x 50'
16	56201033	1	Cord Assembly 14/3
17	56201034	1	Switch, N.O. SPST Snap
18	56201054	1	Handle
19	56201056	1	Handle Tube
20	56263648	1	Spring Plate
21	56382818	1	Strain Relief
22	56016429	1	Decal, Logo
23	56014828	1	Decal, Warning
24	56201592	1	Ball, 1/4 SS

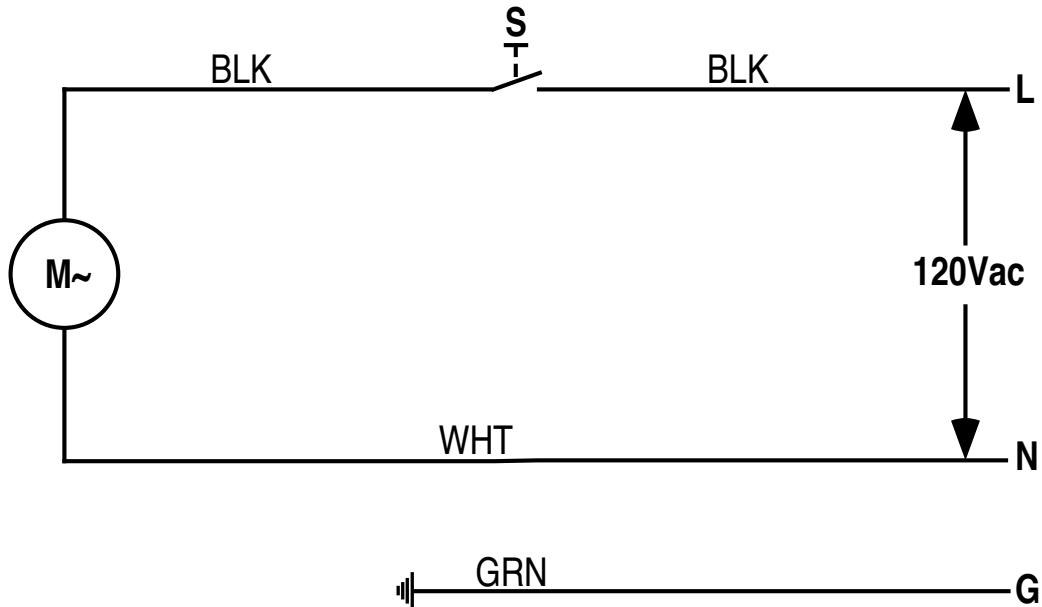


Item	Ref. No.	Qty	Description	Item	Ref. No.	Qty	Description
1	56003318	8	Scr, Hex Hd Loc 1/4-20 x 1.25	**	56201075	1	Weight Kit, 17
2	56003039	2	Scr, Hex Loc 1/4-20 x .50	**	56505270	1	Level-Set Pad Holder 17
3	56009209	3	Scr, Pan Phil Thd Form 10-24 x 1.00	**	56505915	1	ProLite™ Brush 17
4	56009002	10	Washer	**	56505914	1	Prolene Brush 17
5	56201012	1	Base Housing 20"	**	56505911	1	MagnaGrit™ 46 Brush 17
	56201017	1	Base Housing 17"	**	56505912	1	DynaGrit™ 80 Brush 17
6	56201089	1	Axle	**	56505918	1	MidLite Grit™ 180 Brush 17
7	56201018	2	Wheel 5.00 x 1.50	**	56505917	1	MidGrit™ 240 Brush 17
8	56201019	1	Cover, Motor	**	56505913	1	AgLite™ 500 Brush 17
9	56201040	1	Motor / Gearbox, 115V 1.25HP, 10:1	**	56505916	1	Union Mix Brush 17
*	56201037	1	Bearing, Front	**	56505539	1	Soft-Touch™ Shampoo Brush 17
*	56201038	1	Switch, Stationary				
*	56201039	1	Switch, Rotor	**	56201062	1	Weight Kit, 20
*	56201042	1	Capacitor, Start	**	56505280	1	Level-Set Pad Holder 20
*	56201043	1	Gear Head Assembly	**	56505925	1	ProLite™ Brush 20
*	56201044	1	Pinion, 13 Teeth	**	56505924	1	Prolene Brush 20
*	56201045	1	Coupling	**	56505921	1	MagnaGrit™ 46 Brush 20
10	56506006	1	Clutch Plate, Universal	**	56505922	1	DynaGrit™ 80 Brush 20
11	56505910	1	Pad Holder, 17" (standard)	**	56505928	1	MidLite Grit™ 180 Brush 20
	56505920	1	Pad Holder, 20" (standard)	**	56505927	1	MidGrit™ 240 Brush 20
12	56201011	1	Arm, Handle Latch	**	56505923	1	AgLite™ 500 Brush 20
13	56201636	1	Decal, SD 17	**	56505926	1	Union Mix Brush 20
	56201639	1	Decal, SD 20	**	56505540	1	Soft-Touch™ Shampoo Brush 20
14	56009003	2	Wsh, Flt .516 x .938 x .075				
15	56009001	4	Wsh, Bowed .516 x .906 x .008	**	56506006	A/R	Clutch Plate for Above Brushes
				**	56393567	A/R	"Big Mouth" Pad Retainer

* = Not Shown

** = Optional

NOTE: Pad Holders and Brushes come complete with Industry Standard NP-92 Clutch Plate.



Item	Ref. No.	Qty	Description
S	56201034	1	Switch, N.O. SPST Snap
M	56201040	1	Motor / Gearbox, 115V 1.25HP, 10:1

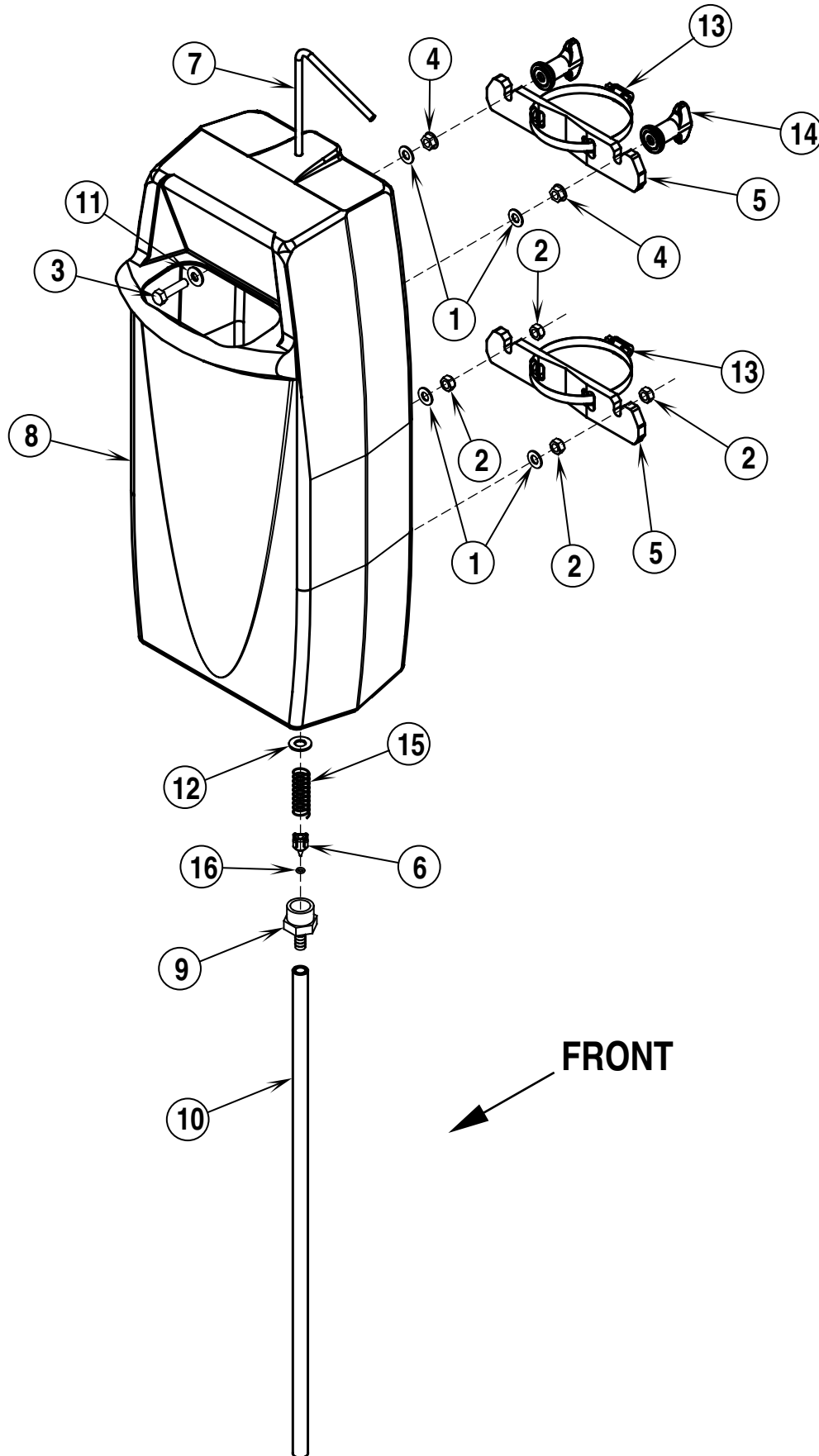
OPTIONAL HANDLE TANK KIT

99-5

6

SD 17 / SD 20

01-12



99-5	OPTIONAL HANDLE TANK KIT		
01-12	SD 17 / SD 20		7

Item	Ref. No.	Qty	Description
	56201050	1	Solution Tank Kit
	56040562	1	Instruction Sheet
	56201004	1	Solution Tank Assembly (#1-16)
1	56001939	4	Wsh, Flt SAE 5/16
2	56002826	4	Nut, Hex Nyl Loc-Thin 5/16-18
3	56002884	4	Scr, Hex Hd SS 5/16-18 x 1.25
4	56009217	2	Nut, Hex Flange Loc 5/16
5	56201005	2	Strap
6	56201007	1	Plug
7	56201008	1	Handle, Valve
8	56201020	1	Tank, Solution
9	56201035	1	Barb, Adapter 3/8 x 3/4 NPT
10	56201036	1	Hose, PVC
11	56201047	4	Wsh, Sealing SS 5/16
12	56201061	1	Washer
13	56352829	2	Clamp, Hose SAE #52
14	56370711	2	Nut, Thumb
15	56379170	1	Spring, Compression
16	56745550	1	O-Ring



Nilfisk-Advance, Inc.
14600 21st Avenue North
Plymouth, MN, 55447-3408
www.nilfisk-advance.com
Phone: 800-989-2235
Fax: 800-989-6566
©2001 Nilfisk-Advance, Inc.,
Plymouth, MN 55447-3408
Printed in the U.S.A.