



## Electronic Service Manuals

This electronic document is provided as a service to our customers. We do not create the contents of the information contained in this document. Should you have detailed questions pertaining to the information contained in this document, you may contact Michco, or the manufacturer which provided the original information in this electronic deliverable. Michco's only part in this electronic deliverable was the electronic assembly process.

You may contact Michco through the following methods:  
Phone (517) 484-9312 or (800) 331-3339 MI, OH, IN only  
2011 N. High St. -- Lansing, Michigan -- 48906  
Fax: (517) 484-9836  
Email: [CustServ@Michco.com](mailto:CustServ@Michco.com)  
Web site: [www.Michco.Com](http://www.Michco.Com)  
Parts Web site: [www.FloorMachineParts.Com](http://www.FloorMachineParts.Com)

Order Parts on Line at:  
**[www.FloorMachineParts.Com](http://www.FloorMachineParts.Com)**

Directly to Parts & Service:  
By Email: **[Shop@Michco.com](mailto:Shop@Michco.com)**  
By Fax: (517) 702-2041  
By Voice: Use numbers above.

**Serving the Cleaning Industry Since 1922**

Notice: All copyrighted material remains property of original owners, all trademarks are property of respective owners. Manuals are subject to Manufacturer's reproduction limitations. Originals or reproductions were provided by manufacturers through a request. We make no warranty as to the correctness of information provided in this document and you assume all risk.

# Pacesetter™ 17HD, 20HD

---



## **PARTS LIST**

**Advance MODELS 56168001, 56168003**

**This parts list is for machines after serial number 1132208**

**All models covered in this manual are OBSOLETE**



**Advance**

*by Nilfisk-Advance*

4/96 revised 5/02 Form Number 56042310

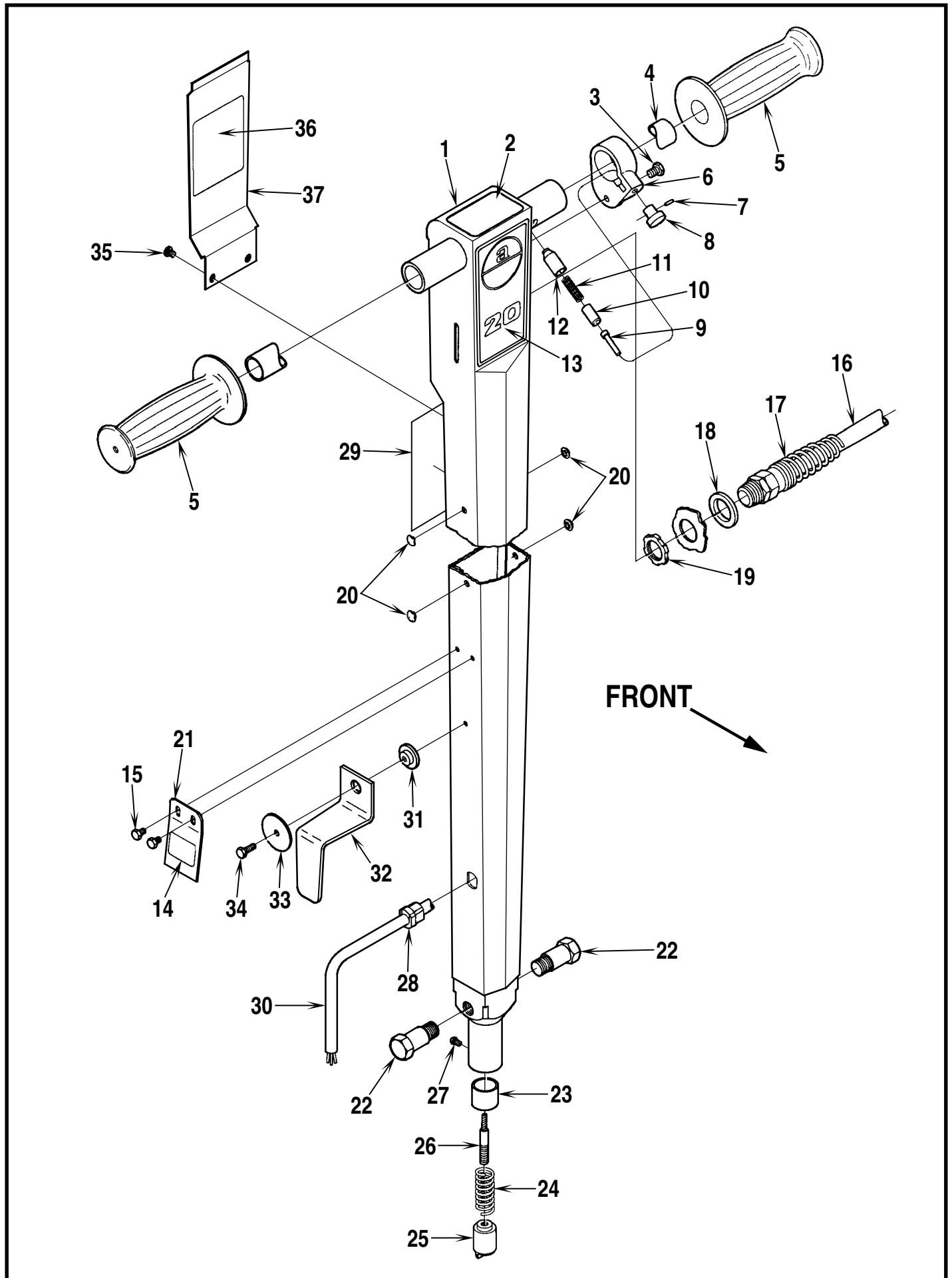
## TABLE OF CONTENTS

<u>DESCRIPTION</u>	<u>PAGE</u>
Handle Assembly - Front View .....	1-2
Handle Assembly - Rear View .....	3-4
Base System and Pads / Brushes .....	5-6
Wiring Diagram .....	6

### WHEN ORDERING PARTS

- \* Use the 8 digit numbers from the "Part No." columns in this parts list.
- \* Specify the model and serial number of the machine.
- \* Use the space below to record the model and serial number for future reference.

Model \_\_\_\_\_ Serial No. \_\_\_\_\_

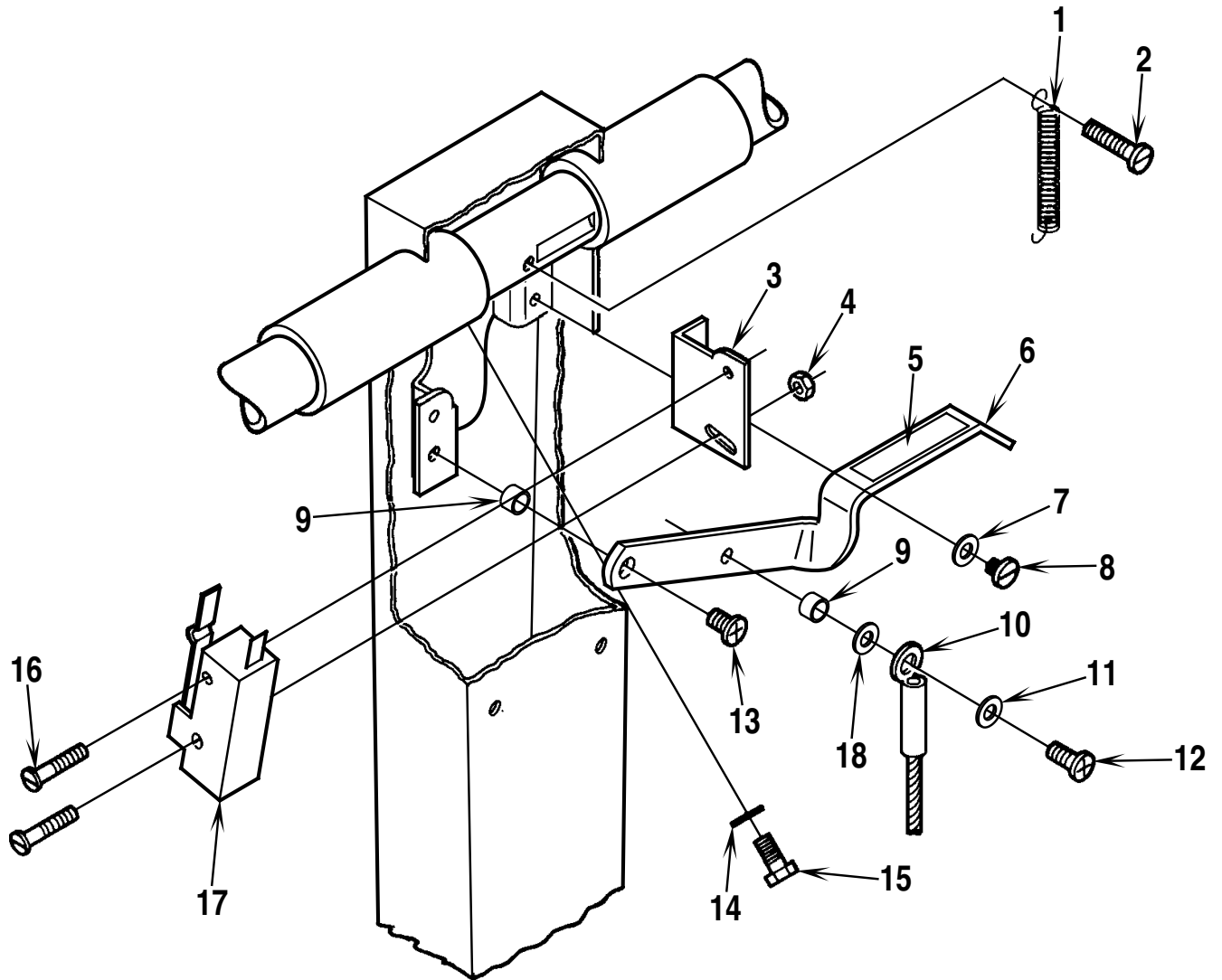


# HANDLE ASSEMBLY

Item	Part No.	Qty	Description
	56172298	1	Handle Assembly
1	56172274	1	Handle
2	56014924	1	Decal, Warning
3	56002003	1	Scr, Pan Phil 8-32 x .50
*	56002244	1	Nut, Hex Machine 8-32
4	56171343	1	Handle Tube
5	56388545	2	Hand Grip
6	56172275	1	Collar
	56172321	1	Collar Assembly (#6-9)
7	56003129	1	Pin
8	56201405	1	Knob
9	56172217	1	Pin
10	56171279	1	Plunger
11	56201448	1	Spring
12	56171281	1	Bushing
13	56014096	1	Decal, 20HD
*	56014085	1	Decal, 17HD
14	56018336	1	Decal, Cord Hook
15	56009030	2	Scr, Pan Phil Thd Form 10-24 x .38
16	56524069	1	Cord Set
17	56109630	1	Strain Relief
*	56109632	1	Brass Insert for 109630
18	56171093	1	Washer
19	56009095	1	Nut, Conduit Lock 1/2-14
20	56153699	4	Button Plug
21	56172272	1	Spring
22	56171336	2	Shoulder Bolt
23	56171269	1	Bushing
24	56171361	1	Spring
25	56171132	1	Plunger
26	56171373	1	Cable
27	56001851	1	Scr, Rnd Drive 4-40 x .25
28	56382818	1	Strain Relief
29	56014828	1	Decal, Warning
30	56171128	1	Cord Set
31	56387678	1	Bushing
32	56172271	1	Cord Hook
33	56009145	1	Wsh, Flt .21 x 1.375 x .10
34	56009042	1	Scr, Pan Phil Thd Form 10-24 x .62
35	56009051	2	Scr, Pan Phil Thd Form 8-32 x .38
36	56014326	1	Decal, Important
37	56172273	1	Cover

\* = Not Shown

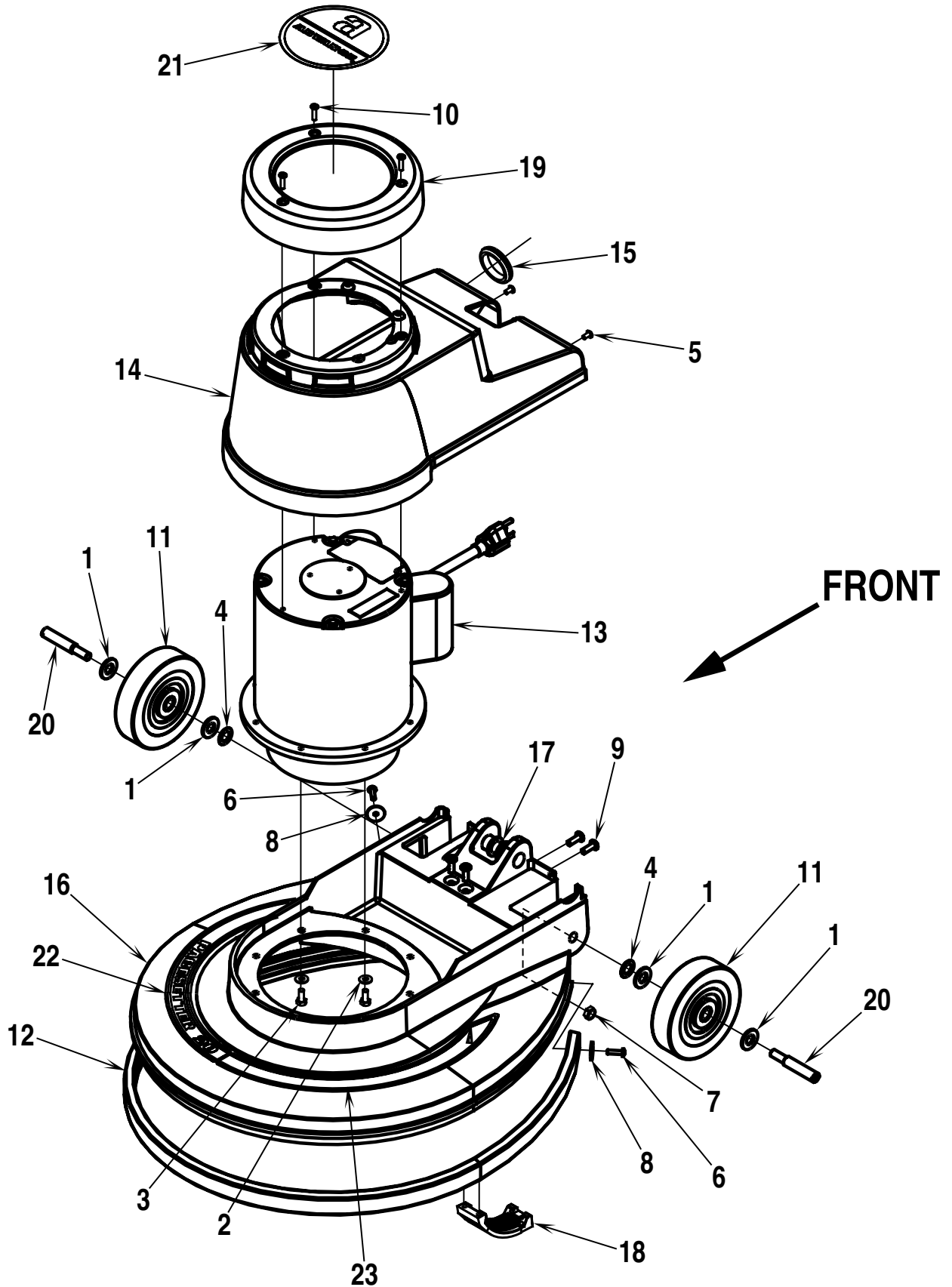
←  
**FRONT**



**HANDLE ASSEMBLY - REAR VIEW**

Item	Part No.	Qty	Description
1	56445177	1	Spring
2	56009034	1	Scr, Pan Phil Thd Form 8-32 x .88
3	56171209	1	Bracket
4	56002848	1	Nut, Hex Nyl Loc Thin SS 4-40
5	56014856	1	Decal, Lever
6	56171126	1	Lever
7	56009010	2	Wsh, Int Shprf #8
8	56009036	2	Scr, Pan Phil Thd Form 8-32 x .25
9	56151092	2	Spacer
10	56171373	1	Cable
11	56001954	1	Wsh, Flt #10
12	56009029	1	Scr, Pan Phil Thd Form 10-24 x .50
13	56009030	1	Scr, Pan Phil Thd Form 10-24 x .38
14	56009052	1	Wsh, Int Shprf 5/16
15	56234079	1	Scr, Machined Shank 5/16-18
16	56003104	2	Scr, Hex 4-40 x 1.00
17	56385615	1	Switch
18	56009125	1	Wsh, Bowed
*	56321737	1	Wire Nut
*	56478246	1	Cable Tie

\* = Not Shown

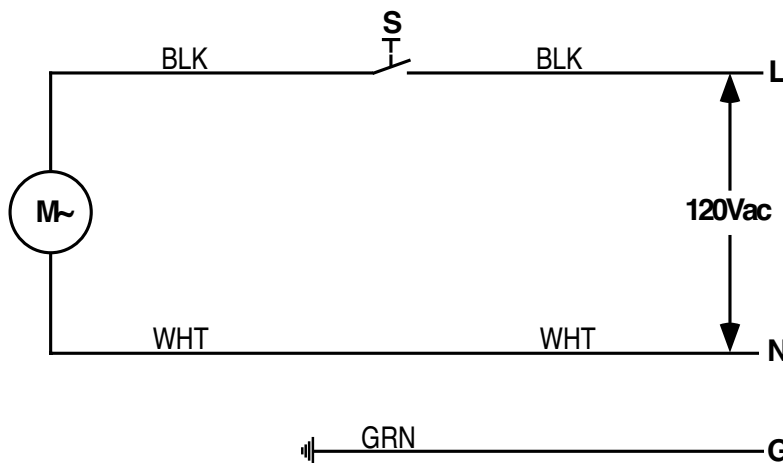


# BASE SYSTEM

Item	Part No.	Qty	Description	Item	Part No.	Qty	Description
1	56001879	4	Wsh, Flt SAE 1/2	**	56201062	A/R	15 lb Stripping Weight
2	56002098	8	Wsh, Flt SAE 1/4	**	56505910	1	Short-Trim Pad Holder 17HD
3	56002922	8	Scr, Hex Hd Loc 1/4-20 x .62	**	56505920	1	Short-Trim Pad Holder 20HD
4	56009001	2	Wsh, Bowed .51 x .90 x .008	**	56505270	1	Level Set Pad Holder 17HD
5	56009030	2	Scr, Pan Phil Thd Form 10-24 x .38	**	56505280	1	Level Set Pad Holder 20HD
6	56009043	2	Scr, Pan Phil Thd Form 10-24 x .75	**	56505915	1	ProLite™ Brush 17HD
7	56009085	2	Nut, Hex Jam 3/8-16	**	56505925	1	ProLite™ Brush 20HD
8	56009096	2	Wsh, Flt .19 x .87 x .06	**	56505914	1	Prolene Brush 17HD
9	56009126	4	Scr, Pan Phil Thd Form 1/4-20 x .75	**	56505924	1	Prolene Brush 20HD
10	56009209	3	Scr, Pan Phil Thd Form 10-24 x 1.00	**	56505911	1	Magna Grit™ 46 Brush 17HD
11	56161691	2	Wheel	**	56505921	1	Magna Grit™ 46 Brush 20HD
12	56168011	1	Bumper, 20HD	**	56505912	1	Dyna Grit™ 80 Brush 17HD
*	56168009	1	Bumper, 17HD	**	56505922	1	Dyna Grit™ 80 Brush 20HD
13	56168013	1	Motor Assembly	**	56505918	1	MidLite Grit™ 180 Brush 17HD
*	56168167	1	Planetary Gear System	**	56505928	1	MidLite Grit™ 180 Brush 20HD
*	56168168	1	Motor W/O Gear System	**	56505917	1	MidGrit™ 240 Brush 17HD
*	56201623	1	Switch, Stationary	**	56505927	1	MidGrit™ 240 Brush 20HD
14	56168015	1	Cover	**	56505913	1	AgLite™ 500 Brush 17HD
15	56168017	1	Grommet	**	56505923	1	AgLite™ 500 Brush 20HD
16	56168403	1	Housing, 20HD	**	56505916	1	Union Mix Brush 17HD
*	56168303	1	Housing, 17HD	**	56505926	1	Union Mix Brush 20HD
17	56171095	2	Bearing, Flange	**	56505539	1	Soft-Touch™ Shampoo Brush 17HD
18	56171104	1	Ratchet	**	56505540	1	Soft-Touch™ Shampoo Brush 20HD
19	56201019	1	Cover, Motor	**	56506006	A/R	Clutch Plate for Above Brushes
20	56520845	2	Axle	**	56393567	A/R	"Big Mouth" Pad Retainer
21	56014513	1	Decal, Logo				
22	56015879	1	Decal, Stripe Right 20HD				
*	56015877	1	Decal, Stripe Right 17HD				
23	56015878	1	Decal, Stripe Left 20HD				
*	56015876	1	Decal, Stripe Left 17HD				

\* = Not Shown  
 \*\* = Optional

**NOTE:** Pad Holders and Brushes come complete with Industry Standard NP-92 Clutch Plate PN 56506006.



# WIRING DIAGRAM

Item	Part No.	Qty	Description
S	56385615	1	Switch, N.O. SPST Snap
M	56168013	1	Motor, 115V 1.50HP, 10:1



Nilfisk-Advance, Inc.  
14600 21st Avenue North  
Plymouth, MN, 55447-3408  
[www.nilfisk-advance.com](http://www.nilfisk-advance.com)  
Phone: 800-989-2235  
Fax: 800-989-6566  
©2002 Nilfisk-Advance, Inc.,  
Plymouth, MN 55447-3408  
Printed in the U.S.A.