



Electronic Service Manuals

This electronic document is provided as a service to our customers. We do not create the contents of the information contained in this document. Should you have detailed questions pertaining to the information contained in this document, you may contact Michco, or the manufacturer which provided the original information in this electronic deliverable. Michco's only part in this electronic deliverable was the electronic assembly process.

You may contact Michco through the following methods:
Phone (517) 484-9312 or (800) 331-3339 MI, OH, IN only
2011 N. High St. -- Lansing, Michigan -- 48906
Fax: (517) 484-9836
Email: CustServ@Michco.com
Web site: www.Michco.Com
Parts Web site: www.FloorMachineParts.Com

Order Parts on Line at:
www.FloorMachineParts.Com

Directly to Parts & Service:
By Email: **Shop@Michco.com**
By Fax: (517) 702-2041
By Voice: Use numbers above.

Serving the Cleaning Industry Since 1922

Notice: All copyrighted material remains property of original owners, all trademarks are property of respective owners. Manuals are subject to Manufacturer's reproduction limitations. Originals or reproductions were provided by manufacturers through a request. We make no warranty as to the correctness of information provided in this document and you assume all risk.

All-Purpose Matador™ 17/20



PARTS LIST

Advance MODELS 56172500(17/115V)

56172510(17/100V), 56172600(20/115V) 56172505(17/230V/OBS)

56172605(20/230V/OBS)



Advance
by Nilfisk-Advance

revised 5/01 FORM NO. 56042113

TABLE OF CONTENTS

00-2

All-Purpose Matador™ 17 / 20

1

DESCRIPTION	PAGE
HANDLE ASSEMBLY-FRONT VIEW	2-3
HANDLE ASSEMBLY-REAR VIEW	4-5
BASE ASSEMBLY	6-7
TANK ASSEMBLY	8-9
SHAMPOO BRUSH AND PAD HOLDERS	10-11
WIRING DIAGRAMS	12-13

WHEN ORDERING PARTS

- * Use the 8 digit numbers from the "Ref. No." columns in this parts list.
- * Specify the model and serial number of the machine.
- * Use the space below to record the model and serial number for future reference.

Model _____ Serial No. _____

HANDLE ASSEMBLY-FRONT VIEW

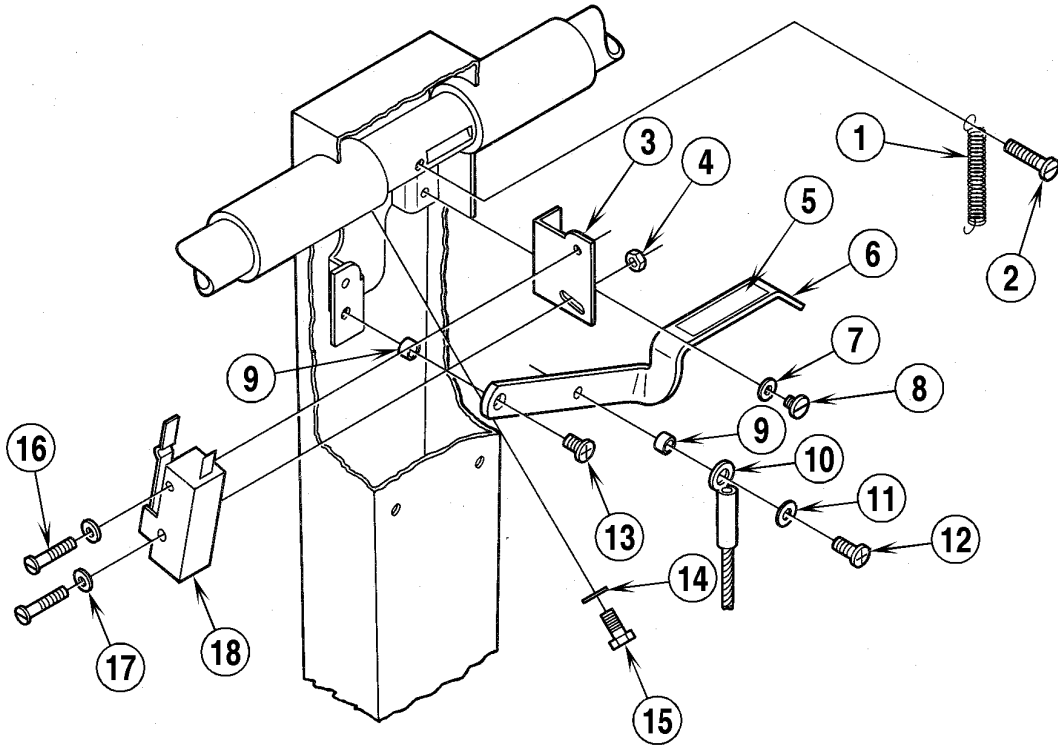
01-2

All-Purpose Matador™ 17 / 20

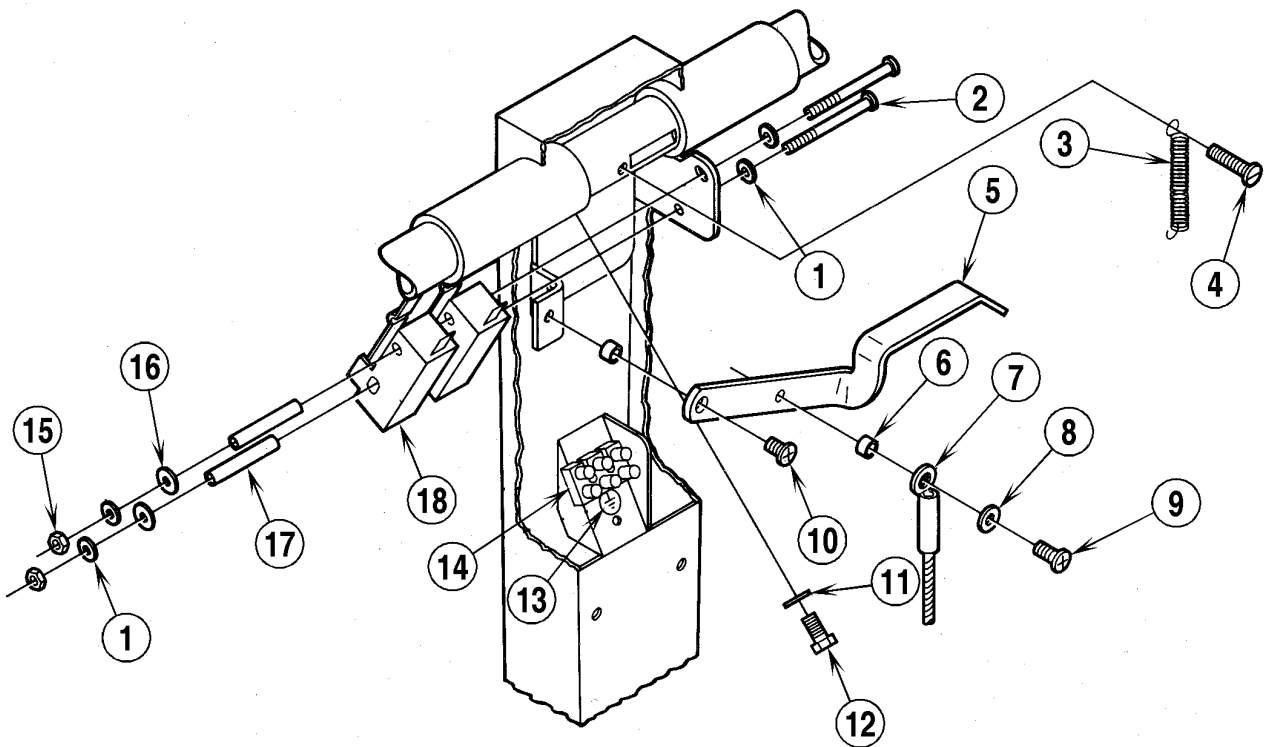
3

Item	Ref. No.	Qty	Description	Item	Ref. No.	Qty	Description
	56172322	1	Handle Assembly 100V	28	56382817	1	Strain Relief 100V, 115V
	56172300	1	Handle Assembly 115V		56163015	1	Strain Relief 230V
	56172301	1	Handle Assembly 230V	29	56171128	1	Cord Set 100V, 115V
1	56172274	1	Handle 100V, 115V		56172331	1	Cord Set 230V
	56172332	1	Handle 230V		56171112	1	Cord Hook Assembly (#30-34)
2	56017024	1	Decal, Warning, Japanese 100V	30	56009005	1	Scr, Pan Phil SS Type B 10-24 x .75
	56014924	1	Decal, Warning 115V	31	56009096	1	Wsh Flt .193 x .875 x .060
3	56001854	1	1/4-20 x 1/2 Screw	32	56171110	1	Arm
*	56001827	1	1/4-20 Whiz Nut	33	56171111	1	Base
4	56172198	1	Handle Tube (silver)115V,230V	34	56380732	1	Spring
			Before Serial # 279789	35	56009030	3	Scr, Pan Phil Thd Form 10-24 x .38
	56171343	1	Handle Tube (yellow) 100V,115V	36	56300602	1	Tube
			After Serial # 279788	37	56014204	1	Decal, Caution 230V
	56183498	1	Handle Tube (yellow) 230V	38	56017014	1	Decal, Warning, Japanese 100V
			After Serial # 279788		56014828	1	Decal, Warning 115V
5	56388545	2	Hand Grip 100V, 115V		56014033	1	Decal, Caution 230V
	56900248	2	Hand Grip 230V	39	56322231	2	Button Plug 230V
	56172321	1	Collar Assembly (#6-9)	40	56172139	3	P-Clip
6	56172275	1	Collar	41	56002549	3	#10-32 x 3/8 HP-5 Screw
7	56003129	1	Spring Pin		56172314	1	Lever Assembly 100V, 115V
8	56201405	1	Knob				(#42-52)
9	56172217	1	Pin		56172334	1	Lever Assembly 230V (#42-52)
10	56171279	1	Plunger	42	56172128	1	Cable
11	56201448	1	Spring 100V, 115V	43	56002061	2	#6-32 Nut
	56578222	1	Spring 230V	44	56002006	1	#6 Flat Washer
12	56171281	1	Bushing	45	56001839	1	#6 Lock Washer
13	56180116	1	Cord Set 100V	46	56172130	1	Bushing
	56524069	1	Cord Set 115V	47	56172126	1	Lever
14	56109630	1	Strain Relief 100V, 115V	48	56172293	1	Cover
15	56109632	1	Brass Insert For 56109630	49	56002534	5	#8-32 x 1/4 HP-5 Screw
16	56171093	1	Washer 100V, 115V	50	56001976	1	1/4-20 Nut
17	56171094	1	Nut 100V, 115V	51	56172290	1	Cover 100V, 115V
18	56183587	1	Cord Set 230V		56172336	1	Cover 230V
19	56183586	1	Strain Relief 230V	52	56002002	1	#6-32 x 3/4 Screw
20	56016439	1	Decal, Handle	53	56014326	1	Decal, Important
21	56153699	4	Button Plug	54	56002140	2	#8 Flat Washer
22	56171336	2	Pivot Bolt				
23	56171269	1	Bushing				* = Not Shown
24	56171361	1	Spring				
25	56171132	1	Plunger				
26	56171373	1	Cable				
27	56001851	1	#4 x 40 x 1/4 Screw				

100Volt / 120Volt



230Volt



HANDLE ASSEMBLY-REAR VIEW

01-2

All-Purpose Matador™ 17 / 20**5**

Item	Ref. No.	Qty	Description
			100V / 115V
1	56445177	1	Spring
2	56002591	1	#8-32 x 7/8 HP-5 Screw
3	56171209	1	Bracket
4	56001986	1	#4-40 Nut
5	56014856	1	Decal, Handle
6	56171126	1	Lever
7	56001940	2	#8 Shakeproof Washer
8	56002534	2	#8-32 x 1/4 HP-5 Screw
9	56151092	2	Spacer
10	56171373	1	Cable
11	56009125	1	Washer
12	56002508	1	#10-24 x 1/2 HP-5 Screw
13	56002518	1	#10-24 x 3/8 HP-5 Screw
14	56001905	1	5/16 Shakeproof Washer
15	56234079	1	1/4-20 x 1/2 Screw
16	56002183	2	#4-40 x 7/8 Screw
17	56001952	2	#4 Shakeproof Washer
18	56388019	1	Switch, N.C. Before Serial # 279789 (Date Code F88)
	56385615	1	Switch, N.O. After Serial # 279788 (Date Code F88)
*	56321737	1	Wire Nut
*	56478246	1	Cable Tie

* = Not Shown

Item	Ref. No.	Qty	Description
			230V
1	56001952	4	#4 Shakeproof Washer
2	56002722	2	#4-40 x 1 3/4 Screw
3	56445177	1	Spring
4	56002591	1	#8-32 x 7/8 HP-5 Screw
5	56171126	1	Lever
6	56151092	2	Spacer
7	56171373	1	Cable
8	56009125	1	Washer
9	56002508	1	#10-24 x 1/2 HP-5 Screw
10	56002518	1	#10-24 x 3/8 HP-5 Screw
11	56001905	1	5/16 Shakeproof Washer
12	56234079	1	1/4-20 x 1/2 Screw
13	56014119	1	Decal, Ground Symbol
14	56183523	1	Terminal Block
*	56002712	2	#4-40 x 5/8 HP-5 Screw
15	56001986	2	#4-40 Nut
16	56200190	2	Fiber Washer
17	56183589	2	Sleeve
18	56388019	2	Switch, N.C. Before Serial # 279789 (Date Code F88)
	56385615	2	Switch, N.O. After Serial # 279788 (Date Code F88)
*	56325219	3	Cable Tie
*	56478246	1	Cable Tie

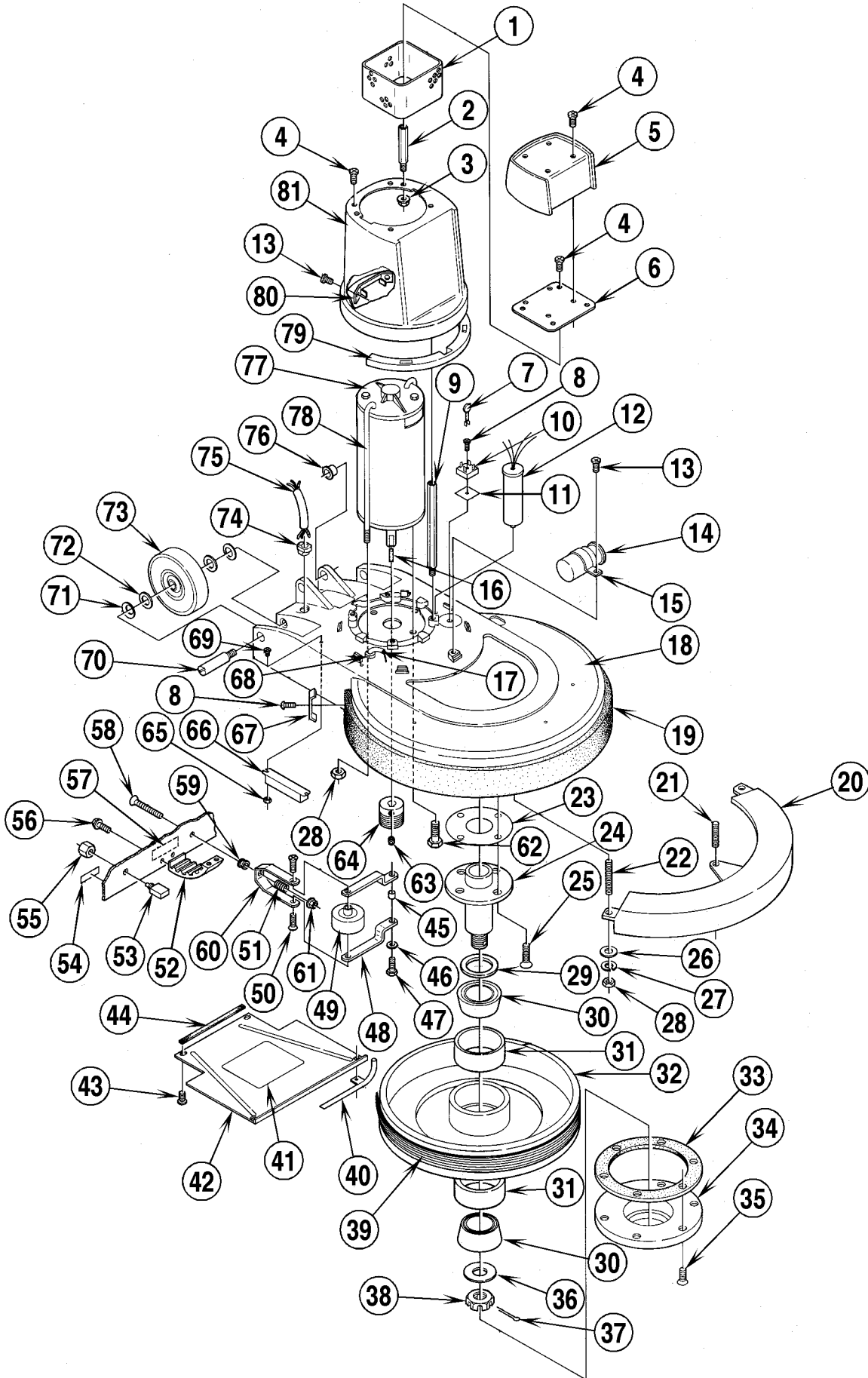
* = Not Shown

BASE ASSEMBLY

6

All-Purpose Matador™ 17 / 20

00-2



BASE ASSEMBLY

00-2

All-Purpose Matador™ 17 / 20

7

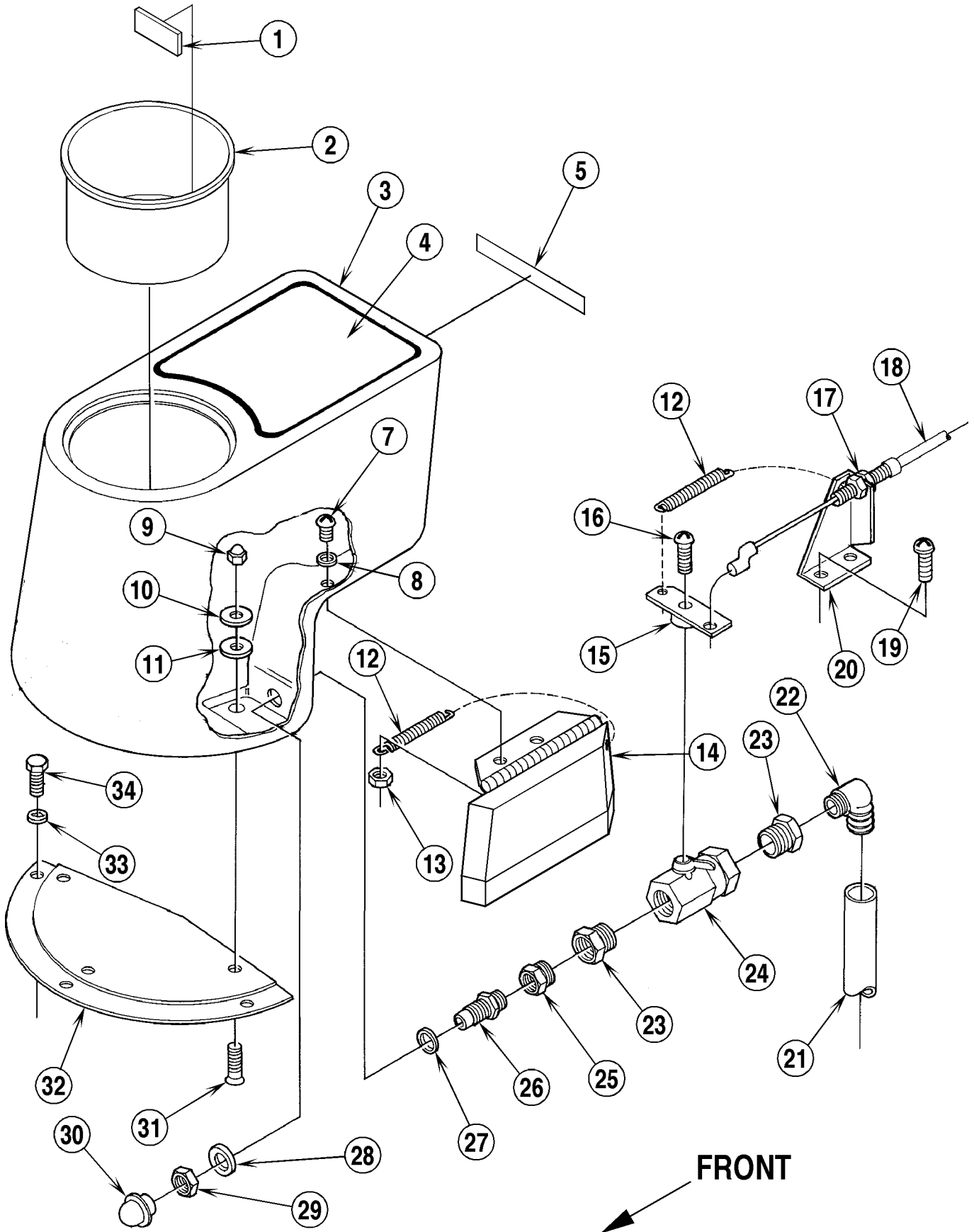
Item	Ref. No.	Qty	Description	Item	Ref. No.	Qty	Description
1	56171590	1	Guard	41	56014843	1	Decal, Instructions 115V
2	56171559	4	Spacer		56014936	1	Decal, Wiring 100V
3	56002768	2	#10-24 Nyl Loc Nut	42	56171092	1	Panel 17"
4	56002043	10	#10-24 x 3/8 Screw		56171121	1	Panel 20"
5	56172526	1	Shroud Cover	43	56002523	4	#8-32 x 3/8 HP-5 Screw
6	56171512	1	Bracket	44	56320099	2'	Gasket (51.4 cm)
7	56387554	1	Varistor	45	56368989	1	Bushing
8	56002510	3	#10-24 x 5/8 HP-5 Screw	46	56002098	1	1/4 Flat Washer
9	56171526	4	Spacer	47	56002514	1	1/4-20 x 3/4 HP-5 Screw
10	56180163	1	Rectifier	48	56171039	2	Idler Bracket 17"
11	56180164	1	Q-Pad		56171176	2	Idler Bracket 20"
12	56171743	1	RFI Filter 230V	49	56171734	1	Idler
13	56002518	3	#10-24 x 3/8 HP-5 Screw	50	56002153	2	#10-24 x 3/8 Flat Hd Screw
14	56171552	1	Capacitor 100V, 115V	51	56171177	1	Spring
	56171510	1	Capacitor 230V	52	56171104	1	Ratchet
15	56171531	1	Clamp	53	56454538	1	15A Circuit Breaker 100V, 115V
16	56443719	1	Key		56387316	1	10A Circuit Breaker 230V
17	56170935	1	Cord 100V, 115V	54	56014873	1	Decal, Circuit Breaker
	56171038	1	Cord 230V	55	56171541	1	Nut
18	56172306	1	Skirt Housing 17" (#24,25,52,56)	56	56002517	4	1/4-20 x 3/4 HP-5 Pan Hd Screw
	56172282	1	Skirt Housing Only 17"	57	56015324	1	Nameplate 100V, 115V
	56172307	1	Skirt Housing 20" (#24,25,52,56)		56015401	1	Nameplate 230V
	56172281	1	Skirt Housing Only 20"	58	56002603	1	1/4-20 x 3 Screw
19	56514070	1	Bumper 17"	59	56206849	1	Bearing
	56514065	1	Bumper 20"	60	56171174	1	Bracket
20	56171422	1	Weight 17"	61	56002708	1	1/4-20 Nyl Loc Nut
	56171047	1	Weight 20"	62	56002667	2	5/16-18 x 3/4 Bolt
21	56171263	1	Stud 17"	63	56001826	2	5/16-18 x 1/2 Set Screw
22	56171221	2	Stud	64	56171414	1	Sheave 17"
23	56171366	1	Shim 17"		56171088	1	Sheave 20"
24	56171056	1	Stud Shaft	65	56002808	2	#8-32 Nyl Loc Nut 230V
25	56002521	4	1/4-20 x 3/4 HP-5 Flat Hd Screw	66	56172260	1	Resistor 230V
26	56001939	3	5/16 Flat Washer (2 on 20")	67	56171108	2	Bumper Clamp
27	56001905	3	5/16 Skprf Washer (2 on 20")	68	56382817	1	Strain Relief
28	56002701	5	5/16-18 Nyl Loc Nut (4 on 20")	69	56387672	2	Screw 230V
29	56171078	1	Seal	70	56520845	2	Axle
30	56378267	2	Bearing	71	56155373	2	Bowed Washer
31	56378259	2	Bearing Race	72	56155411	2	Flat Washer
32	56171376	1	Pulley W/Races	73	56161691	2	Wheel
	56171090	1	Pulley W/O Races	74	56382818	1	Strain Relief
33	56158275	1	Gasket	75	56171129	1	Cord Set 100V, 115V
34	56163430	1	Drive Cap (Silver/NP-47)		56172331	1	Cord Set 230V
	56163431	1	Drive Cap (Gold/NP-92)	76	56171095	2	Bearing
35	56001849	6	#12-24 x 5/8 Screw	77	56171594	1	Motor 100V, 115V 1.5 hp
36	56163449	1	Washer		56171556	1	Motor 230V 1.5 hp
37	56002038	1	Cotter Pin		56171472	1	Carbon Brush Set 100V, 115V
38	56158313	1	Castle Nut		56171473	1	Carbon Brush Set 230V
39	56171200	1	Belt		56171557	1	End Bell (W/Brushes) 100V, 115V
40	56171640	1	Tube	78	56171530	2	J-Bolt
				79	56172525	1	Gasket
				80	56171786	1	Bracket 115V, 230V
				81	56172287	1	Motor Shroud

TANK ASSEMBLY

8

All-Purpose Matador™ 17 / 20

00-2



TANK ASSEMBLY

01-3

All-Purpose Matador™ 17 / 20**9**

Item	Ref. No.	Qty	Description
	56172304	1	Tank Assembly, US (#1-16,22-32,35-36)
	56172345	1	Tank Assembly, Japan (#1-16,22-32,35-36)
1	56014919	1	Decal, Fill Line 100V, 115V
2	56172288	1	Cylinder Cover
3	56172289	1	Tank
4	56016461	1	Decal, All-Purpose 17
	56016463	1	Decal, All-Purpose 20
5	56014914	1	Decal, Caution, US
	56017092	1	Decal, Caution, Japan
6			Intentionally Omitted
7	56001913	2	1/4-20 x 7/8 Brass Screw
8	56900737	2	Sealing Washer
9	56172066	3	Acorn Nut
10	56159387	3	Brass Washer
11	56154776	3	Rubber Washer
12	56328790	2	Spring
13	56001827	2	1/4-20 Whiz Nut
14	56172291	1	Cover
15	56172166	1	Lever
16	56002018	1	#10-24 x 5/8 Screw
17	56001976	1	1/4-20 Nut
18	56172128	1	Cable
19	56002508	2	#10-24 x 1/2 HP-5 Screw
20	56172292	1	Bracket
21	56172176	1	Hose
22	56753691	1	Barb
23	56751686	2	Reducer
24	56387762	1	Valve
25	56750363	1	Bushing
26	56172075	1	Nipple
27	56742552	1	O-Ring
28	56009218	1	Brass Washer
29	56745860	1	Jam Nut
30	56172096	1	Strainer
31	56002081	3	1/4-20 x 7/8 Flat Head Screw
32	56172286	1	Plate
33	56002053	3	#10 Flat Washer
34	56002829	3	#10-24 x 5/8 Screw

* = Not Shown

SHAMPOO BRUSH AND PAD HOLDERS

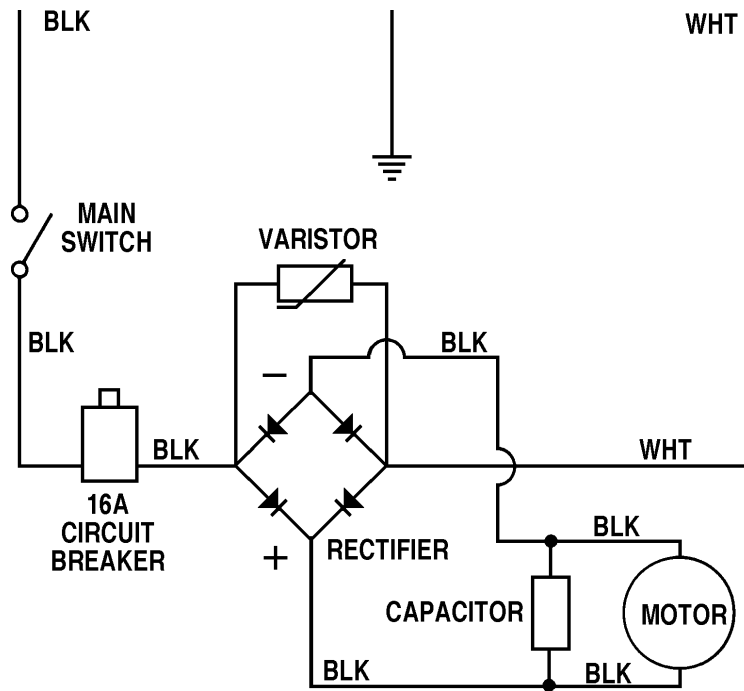
00-2

All-Purpose Matador™ 17 / 20

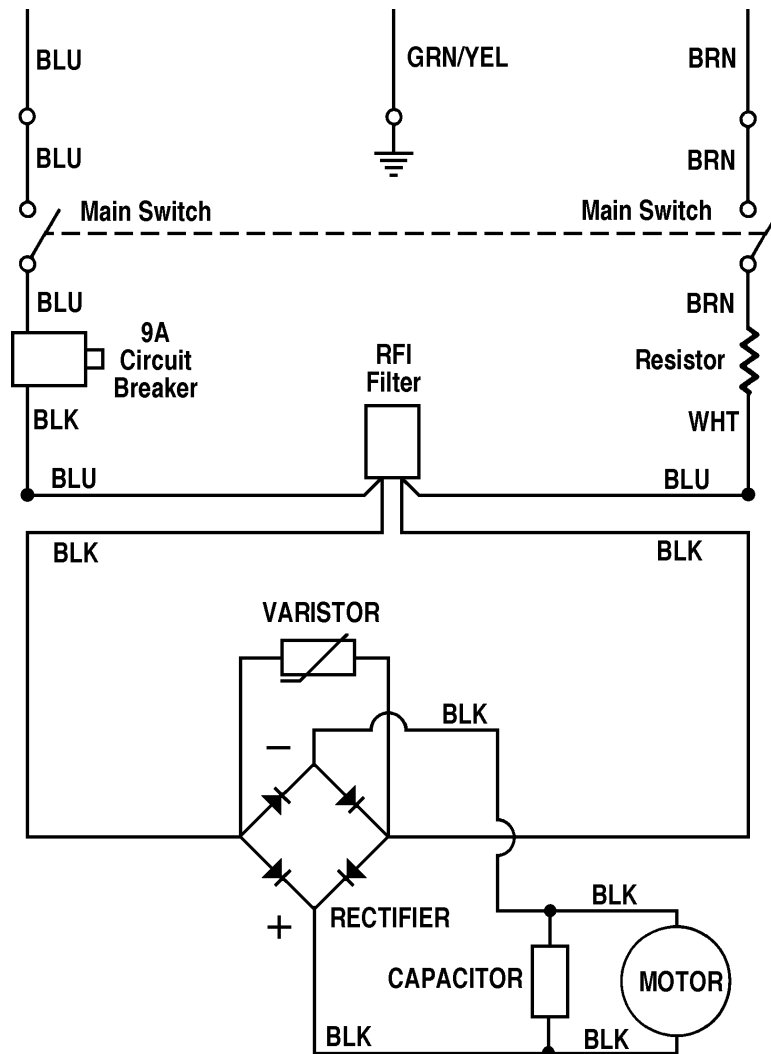
11

Item	Ref. No.	Qty	Description	Ref. No.	Qty	Description
	56505537	1	Soft-Touch™ Shampoo Brush Assy, 17" (NP-47 / #1-17, except 15)	17" Brushes For Silver NP-47 Drive Cap		
	56505539	1	Soft-Touch™ Shampoo Brush Assy, 17" (NP-92 / #1-17, except 15)	56505055	1	Magna Grit™ 46 Brush
	56505538	1	Soft-Touch™ Shampoo Brush Assy, 20" (NP-47 / #1-17)	56505054	1	Dyna Grit™ 80 Brush
	56505540	1	Soft-Touch™ Shampoo Brush Assy, 20" (NP-92 / #1-17)	56505078	1	MidLite Grit™ 180 Brush
1	56009065	6	Scr, Flt Phil Thd Form 10-24 x .50	56505082	1	MidGrit™ 240 Brush
2	56506001	1	Clutch Plate (Silver/NP-47)	56505059	1	AgLite™ 500 Brush
	56506006	1	Clutch Plate (Plastic/NP-92)	56505331	1	Prolene Brush
3	56002694	3	Scr, SS Thd Form 1/4-14 x 1.00	56505076	1	ProLite™ Brush
4	56505536	1	Adapter	56505334	1	Union Mix Brush
5	56171322	1	Ring	56505330	1	Short-Trim Pad Holder (standard)
6	56002856	4	Nut, Hex Nyl Loc SS 5/16-18	17" Brushes For Gold NP-92 Drive Cap		
7	56171418	1	Plate, 17"	56505911	1	Magna Grit™ 46 Brush
	56171304	1	Plate, 20"	56505912	1	Dyna Grit™ 80 Brush
8	56505543	1	Drive Disc	56505918	1	MidLite Grit™ 180 Brush
9	56505530	1	Brush, 17"	56505917	1	MidGrit™ 240 Brush
	56505531	1	Brush, 20"	56505913	1	AgLite™ 500 Brush
10	56002938	4	Wsh, Flt SS 5/16	56505914	1	Prolene Brush
11	56002913	4	Scr, Hex Hd SS 5/16-18 x 1.00	56505915	1	ProLite™ Brush
12	56014960	1	Decal, Caution, 17"	56505916	1	Union Mix Brush
	56014922	1	Decal, Caution, 20"	56505910	1	Short-Trim Pad Holder
13	56171316	4	Bushing	20" Brushes For Silver NP-47 Drive Cap		
14	56171314	4	Spring	56505058	1	Magna Grit™ 46 Brush
15	56171332	4	Spacer, 20"	56505048	1	Dyna Grit™ 80 Brush
16	56171320	4	Spacer	56505079	1	MidLite Grit™ 180 Brush
17	56171328	4	Scr, #14 x 2.50	56505083	1	MidGrit™ 240 Brush
	56505180	1	Level-Set Pad Holder, 17" (NP-47 / #1, 2, 18-22)	56505063	1	AgLite™ 500 Brush
	56505270	1	Level-Set Pad Holder, 17" (NP-92 / #1, 2, 18-22)	56505450	1	Prolene Brush
	56505183	1	Level-Set Pad Holder, 20" (NP-47 / #1, 2, 18-22)	56505077	1	ProLite™ Brush
	56505280	1	Level-Set Pad Holder, 20" (NP-92 / #1, 2, 18-22)	56505454	1	Union Mix Brush
18		6	Screw	56505455	1	Short-Trim Pad Holder (standard)
19	56505185	1	Outer Ring	20" Brushes For Gold NP-92 Drive Cap		
20	56505186	1	Mount, Rubber Shock	56505921	1	Magna Grit™ 46 Brush
21	56505182	1	Inner Ring	56505922	1	Dyna Grit™ 80 Brush
22	56505181	1	Face, Level-Set Padholder, 17"	56505928	1	MidLite Grit™ 180 Brush
	56505184	1	Face, Level-Set Padholder, 20"	56505927	1	MidGrit™ 240 Brush
				56505923	1	AgLite™ 500 Brush
				56505924	1	Prolene Brush
				56505925	1	ProLite™ Brush
				56505926	1	Union Mix Brush
				56505920	1	Short-Trim Pad Holder
				56182058	A/R	"Pad Grab" Pad Retainer (snap in)
				56393567	A/R	"Big Mouth" Pad Retainer (threaded)

100V / 115V



230V



WIRING DIAGRAMS

00-2

All-Purpose Matador™ 17 / 20**13****Ref. No. Qty Description****100V / 115V WIRING DIAGRAM**

56171552	1	Capacitor
56454538	1	Circuit Breaker 15A
56388019	1	Main Switch, N.C. Before Serial # 279789 (Date Code F88)
56385615	1	Main Switch, N.O. After Serial # 279788 (Date Code F88)
56171594	1	Motor 1.5 hp
56171472	1	Carbon Brush Set for Motor
56171557	1	End Bell (W/Brushes) for Motor
56180163	1	Rectifier
56387554	1	Varistor

Ref. No. Qty Description**230V WIRING DIAGRAM**

56171552	1	Capacitor
56387316	1	Circuit Breaker 10A
56388019	2	Main Switch, N.C. Before Serial # 279789 (Date Code F88)
56385615	2	Main Switch, N.O. After Serial # 279788 (Date Code F88)
56171556	1	Motor 1.5 hp
56171473	1	Carbon Brush Set for Motor
56180163	1	Rectifier
56172260	1	Resistor
56171743	1	RFI Filter
56183523	1	Terminal Block
56387554	1	Varistor



Nilfisk-Advance, Inc.
14600 21st Avenue North
Plymouth, MN, 55447-3408
www.nilfisk-advance.com
Phone: 800-989-2235
Fax: 800-989-6566
©2002 Nilfisk-Advance, Inc.,
Plymouth, MN 55447-3408
Printed in the U.S.A.