



Electronic Service Manuals

This electronic document is provided as a service to our customers. We do not create the contents of the information contained in this document. Should you have detailed questions pertaining to the information contained in this document, you may contact Michco, or the manufacturer which provided the original information in this electronic deliverable. Michco's only part in this electronic deliverable was the electronic assembly process. By providing this manual on line we are not guaranteeing parts availability.

You may contact Michco through the following methods:

Phone (517) 484-9312 or (800) 331-3339

2011 N. High St. -- Lansing, Michigan -- 48906

Fax: (517) 484-9836

Email: CustServe@Michco.com

Web site: www.Michco.Com

Parts Web site: www.FloorMachineParts.Com

Order Parts on Line at:

www.FloorMachineParts.Com

Directly to Parts & Service:

By Email: **Shop@Michco.com**

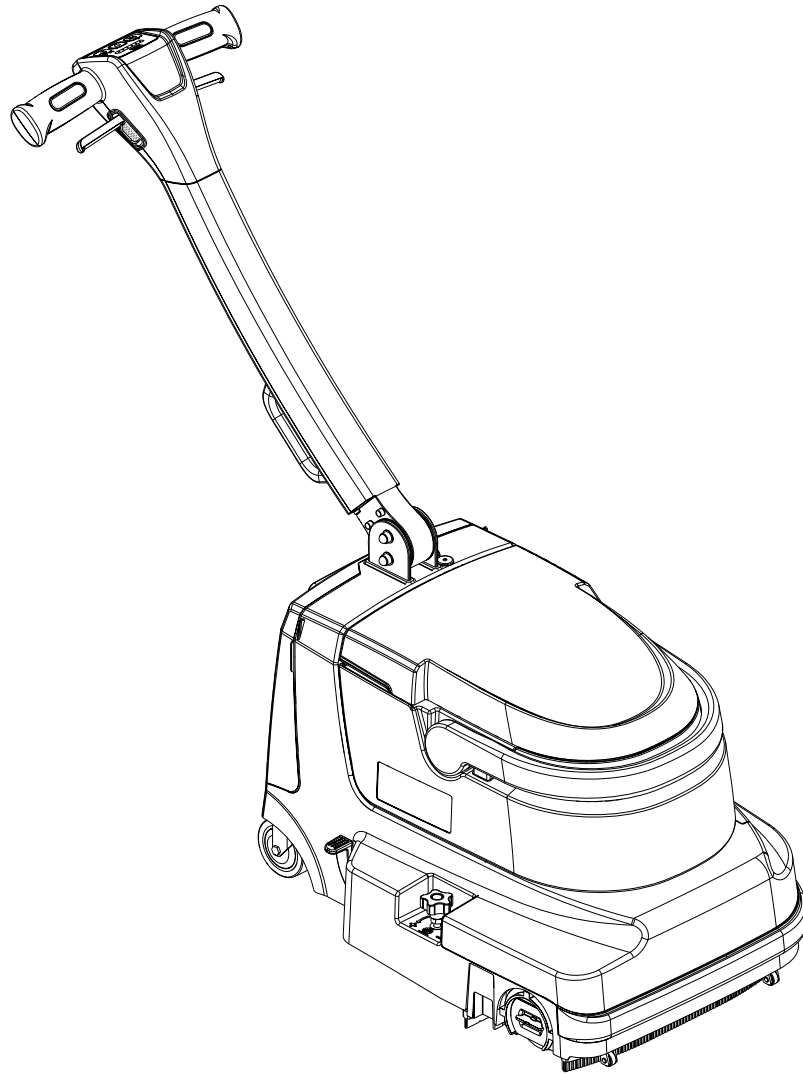
By Fax: (517) 702-2041

By Voice: Use numbers above.

Serving the Cleaning Industry Since 1922

Notice: All copyrighted material remains property of original owners, all trademarks are property of respective owners. Manuals are subject to Manufacturer's reproduction limitations. Originals or reproductions were provided by manufacturers through a request. We make no warranty as to the correctness of information provided in this document and you assume all risk. By placing these manuals on line we are not declaring our corporation to be an manufacturer authorized dealer or provider, please check our web site for authorized manufacturers we represent.

SC250



Parts List

Model: 9087381020

TABLE OF CONTENTS

GENERAL VIEW	2
SOLUTION AND RECOVERY TANK	4
BRUSH MOTOR	6
CHASSIS - FIXING AND COVER	8
CHASSIS - VACUUM AND REAR WHEELS.....	10
CHASSIS - SOLUTION AND VAC CHAMBER.....	12
CHASSIS - PEDAL WHEELS.....	14
HANDLE BAR.....	16
WIRING DIAGRAM	18
RECOMMENDED PARTS.....	20
ACCESSORIES/ OPTIONAL	21

WHEN ORDERING PARTS

- Use the part numbers from the “REF. NO.” columns in this parts list. If the “REF. NO.” column is blank; look under the “KIT” column to identify which kit contains the part in question, then use the kit callout, for example “K1”, to find the “REF. NO.” for that kit.
- Specify the model and serial number of the machine.
- Use the space below to record the model and serial number for future reference.

Model

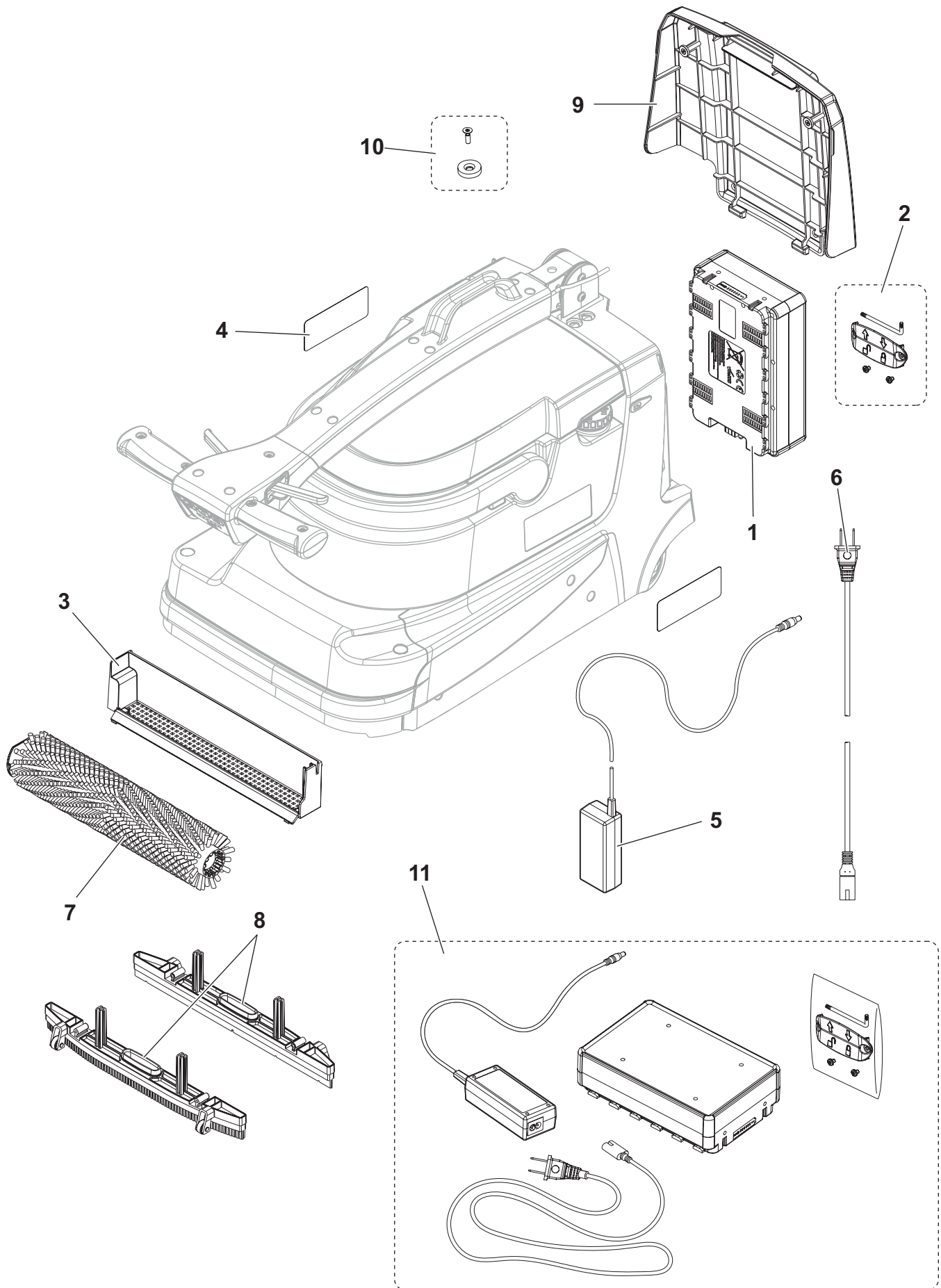
Serial No.

* = Optional

= Modified item No. or New item No.

[] = Not shown

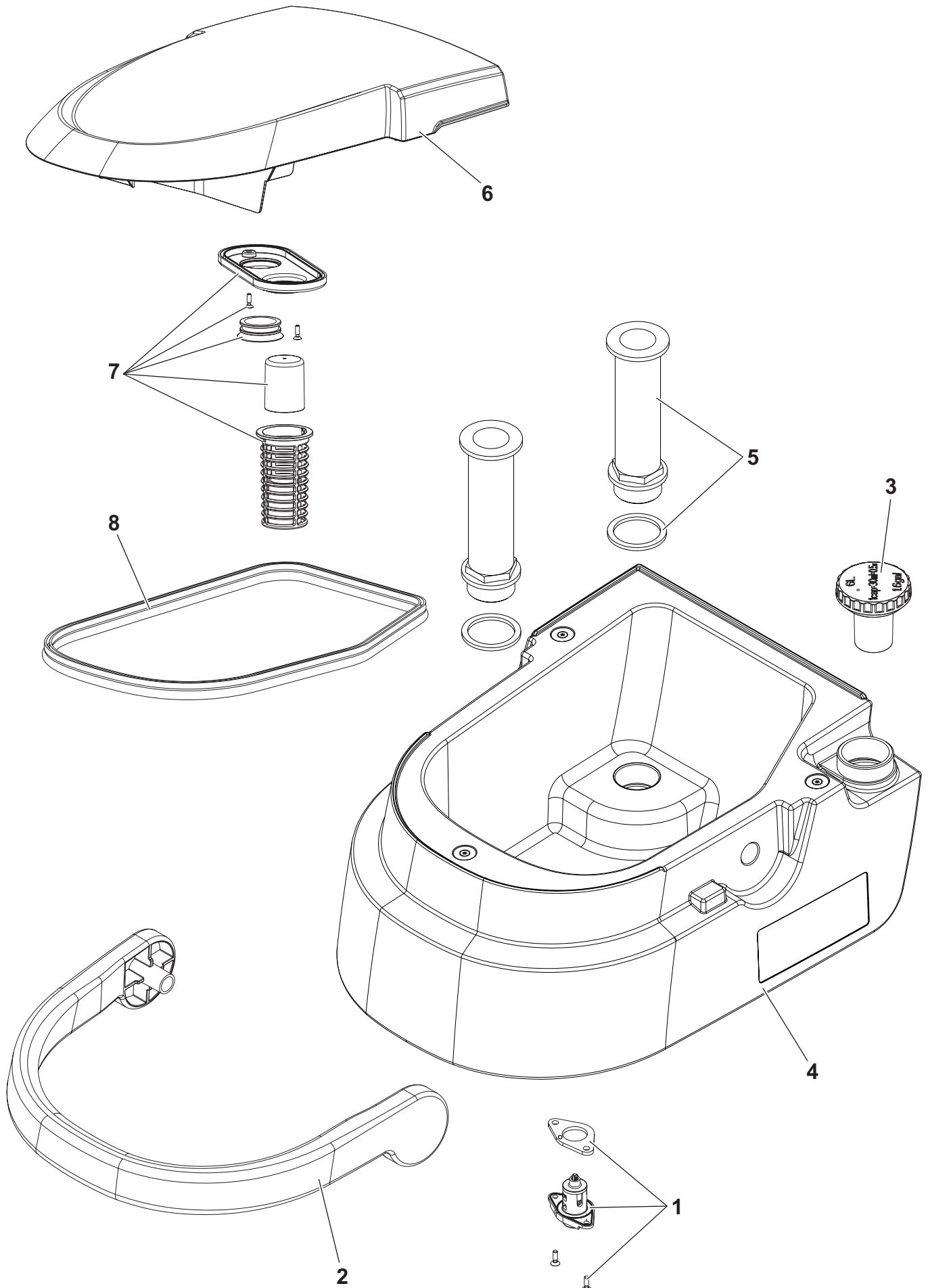
GENERAL VIEW



GENERAL VIEW

KIT	ITEM	REF. NO.	QTY	DESCRIPTION
	1*	9100002070	1	BATTERY LI 36V 10S4P
	2	9100002059	1	HANDLE BATTERY LI
	3	9100001964	1	MINI CONTAINER PLAST. F DIRT PKD
	4	9100002024	1	DECALS ADVANCE SC250 KIT
	5	9100002058	1	CHARGER BATTERY LI 100-240V 1.5A
	6	9100002008	1	CABLE POWER SUPPLY US L.1000MM PKD
	7*	9100002066	1	BRUSH CYL 340MM MEDIUM NYLON WHITE
	7*	9100002067	1	BRUSH CYL 340MM HARD GRIT 320 GREY
	7*	9100002068	1	BRUSH CYL 340MM MICROFIBRE
	7*	9100002069	1	BRUSH CYL 340MM SOFT NYLON BLACK
	8*	9100002063	1	SQUEEGEE 360MM GREY RUBBER 2 PCS SET
	8*	9100002064	1	SQUEEGEE 360MM PU 2 PCS SET
	9	9100002026	1	COVER REAR GREY KIT
	10	9100002028	1	MAGNET ROUND KIT
	11*	9100002057	1	BATTERY LI PACK US

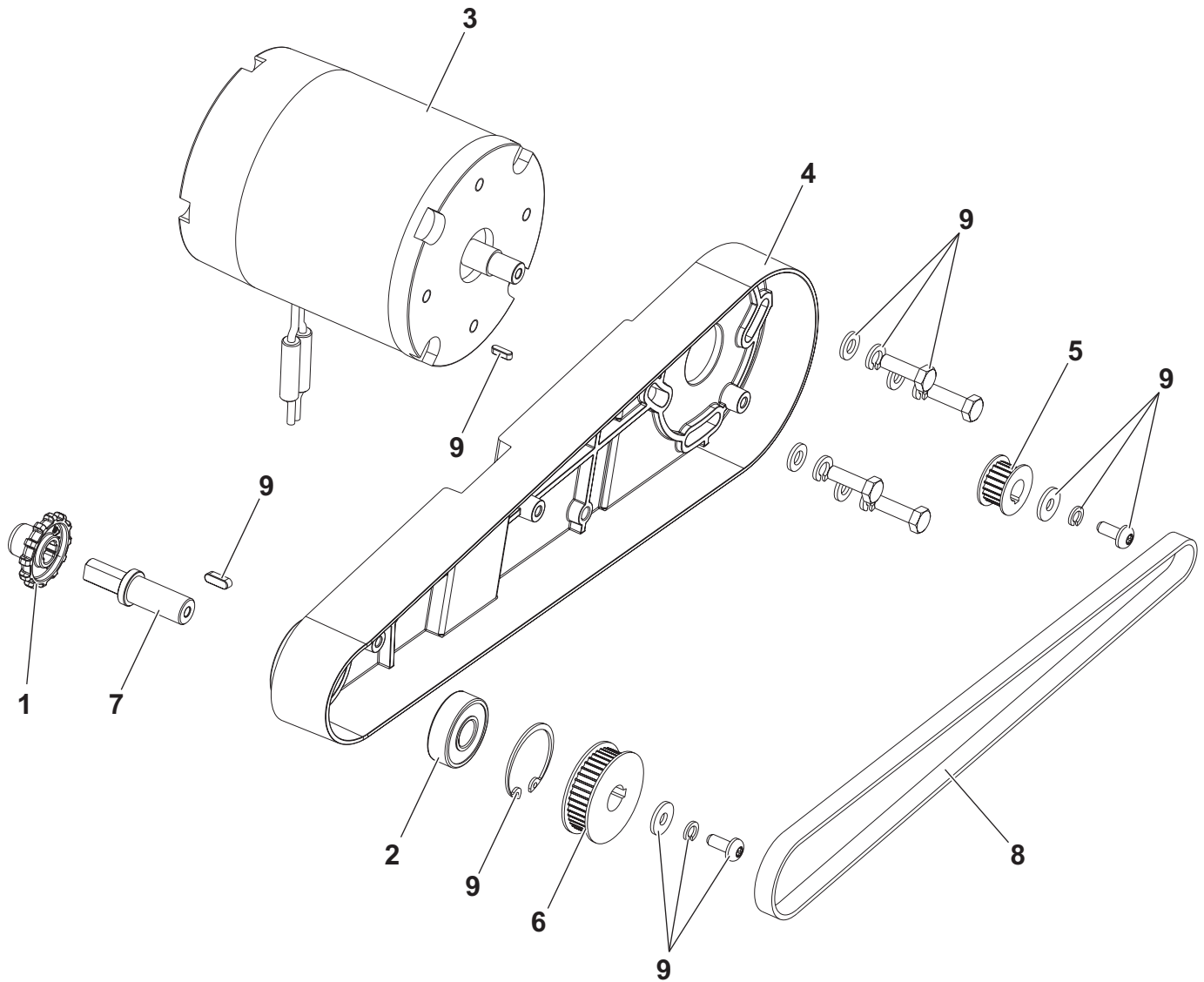
SOLUTION AND RECOVERY TANK



SOLUTION AND RECOVERY TANK

KIT	ITEM	REF. NO.	QTY	DESCRIPTION
	1	9100002029	1	VALVE F SOLUTION TANK KIT
	2	9100001972	1	HANDLE PLAST. GREY F TANK PKD
	3	9100001990	1	CAP PLAST. F TANK PKD
	4	9100002030	1	TANK WATER PLAST. 6 LT GREY KIT
	5	9100002032	2	PIPE PLAST. F TANK KIT
	6	9100002033	1	COVER TANK PLAST. GREY KIT
	7	9100002035	1	CAGE FLOAT PLAST. BLACK KIT
	8	9100001993	1	GASKET BULB REINFORCED -SKEIN PKD

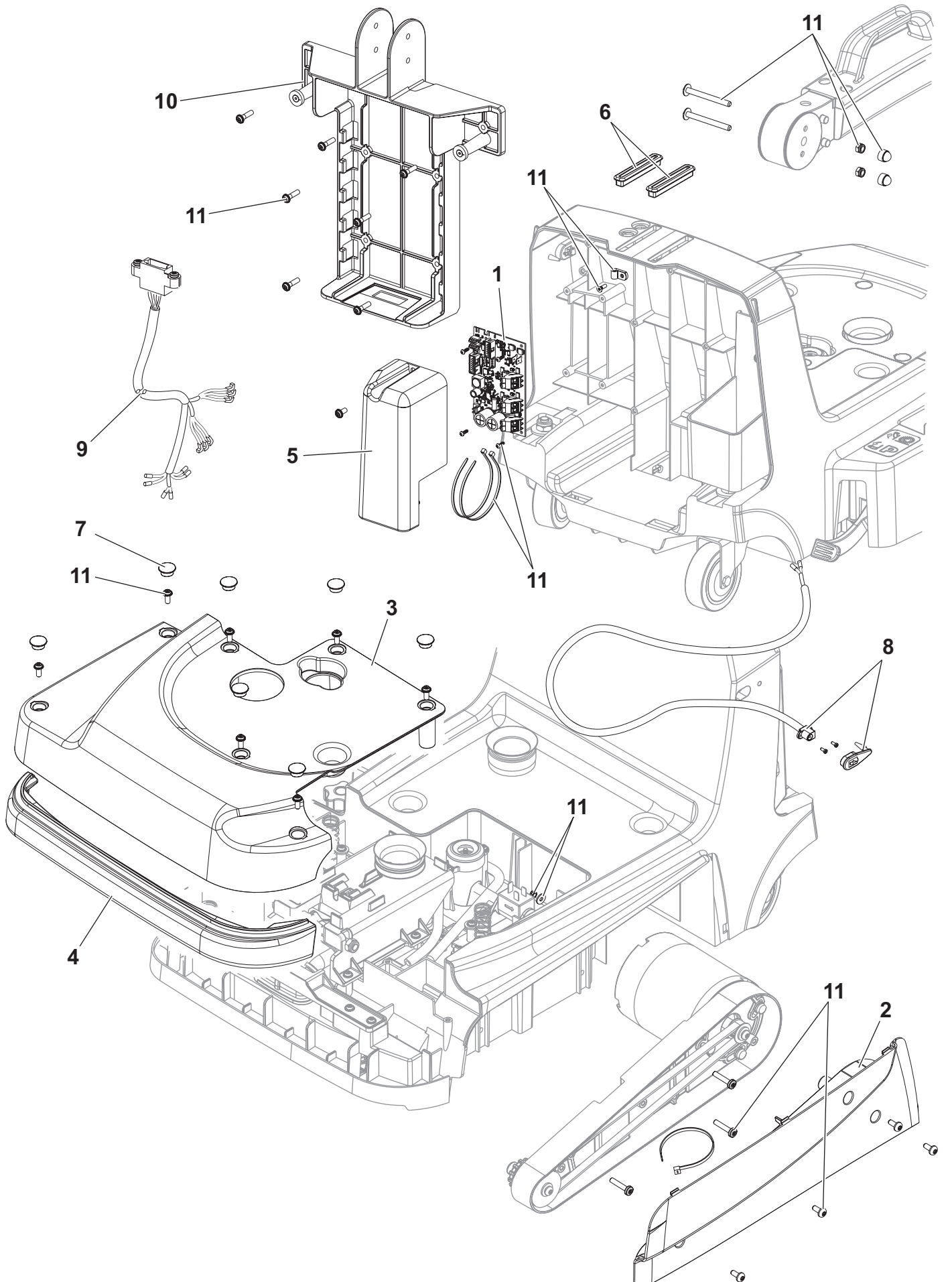
BRUSH MOTOR



BRUSH MOTOR

KIT	ITEM	REF. NO.	QTY	DESCRIPTION
	1	9100001957	1	HUB TRACTION BRUSH PLAST. PKD
	2	9100002018	1	BEARING BALL 6201 2RS1PKD
	3	9100001966	1	MOTOR BRUSH 180W 36V PKD
	4	9100001967	1	SUPPORT ALU F BRUSH MOTOR PKD
	5	9100001968	1	PULLEY TIMING BELT ALU HTD 20 3M 09 PKD
	6	9100001969	1	PULLEY TIMING BELT ALU HTD 40 3M 09 PKD
	7	9100001970	1	SHAFT GALV. F BRUSHPKD
	8	9100001971	1	BELT TIMING HTD/OMEGA 669 3M 09 PKD
	9	9100002036	1	HARDWARE BRUSH MOTOR KIT

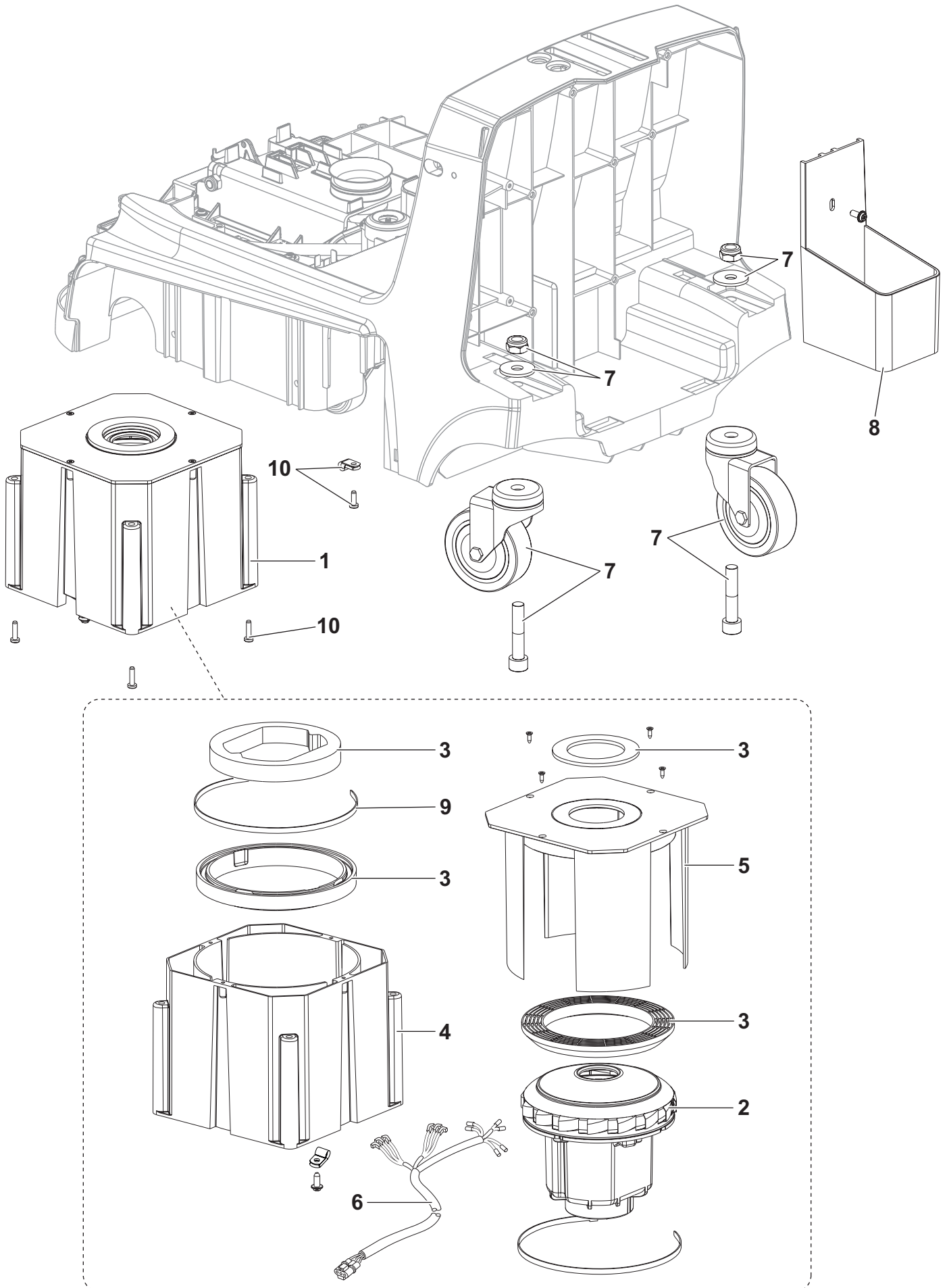
CHASSIS - FIXING AND COVER



CHASSIS - FIXING AND COVER

KIT	ITEM	REF. NO.	QTY	DESCRIPTION
	1	9100001960	1	CONTROLLER MAIN MACH.P24 PROGR.PKD
	2	9100001963	1	CASING BELT PROTECTION PLAST. GREY PKD
	3	9100001965	1	CASING UPPER PLAST. GREY F CHASSIS PKD
	4	9100001988	1	BUMPER FRONT PLAST. PKD
	5	9100001991	1	COVER PLAST.F CONTROLLER MACH.PKD
	6	9100001994	2	GASKET RUBBER HANDLE FIXING PKD
	7	9100002019	1	CAP PLAST. D.13.25XD.18 BLACK 10 PCS SET
	8	9100002037	1	HARNESS BATTERY CHARGER KIT
	9	9100002038	1	HARNESS BATTERY KIT
	10	9100002039	1	HANDLE FIXING KIT
	11	9100002040	1	HARDWARE CHASSIS KIT

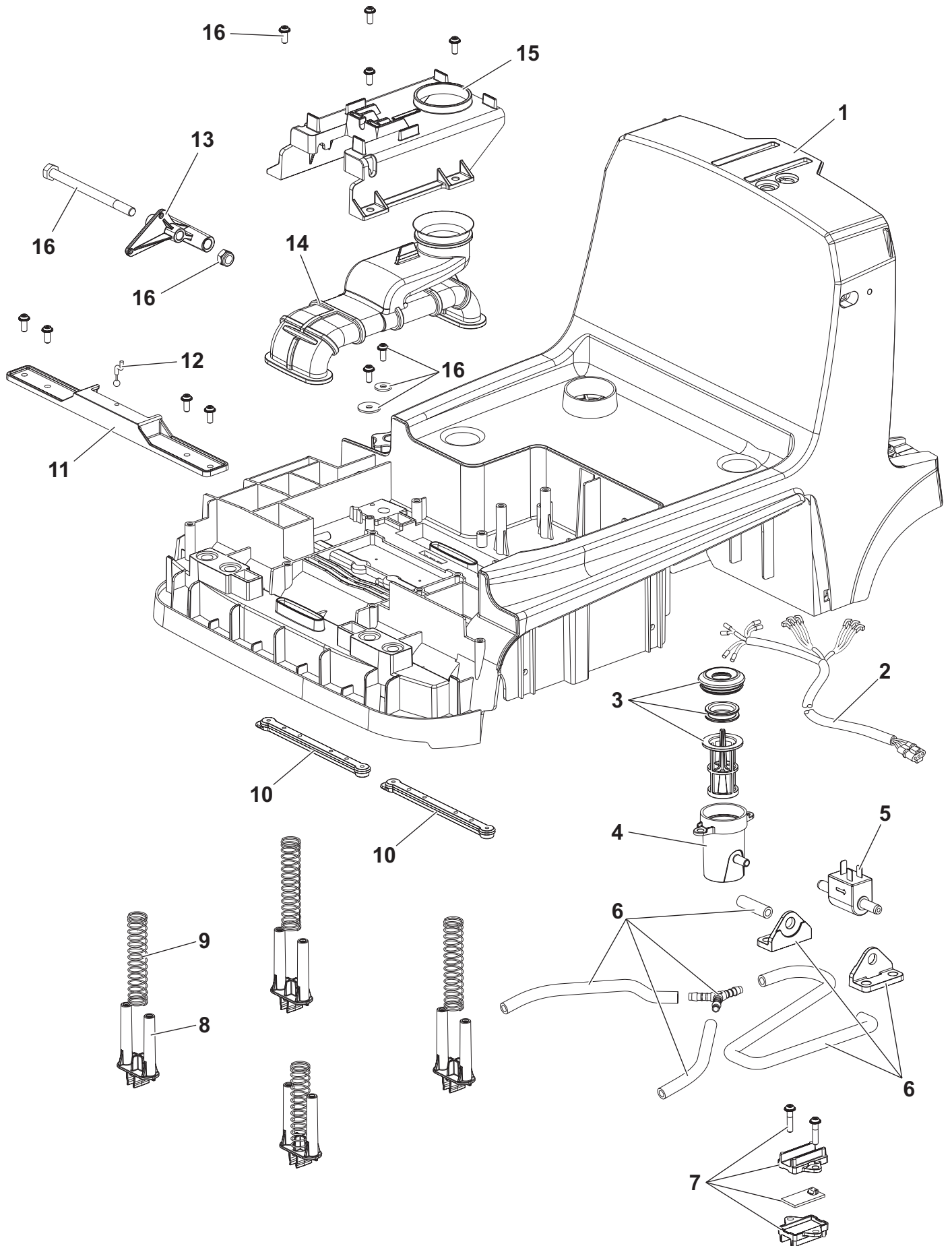
CHASSIS - VACUUM AND REAR WHEELS



CHASSIS - VACUUM AND REAR WHEELS

KIT	ITEM	REF. NO.	QTY	DESCRIPTION
	1	9100002041	1	MOTOR VACUUM 36V 200W KIT
	2	9100001987	1	MOTOR VACUUM 36V 200W PKD
	3	9100002042	1	SEALINGS MOTOR VACUUM KIT
	4	9100001983	1	SUPPORT EXT. PLAST. F VAC. MOTOR PKD
	5	9100001989	1	SUPPORT INT. PLAST. F VAC. MOTOR PKD
	6	9100001996	1	HARNESS VACUUM MOTOR PKD
	7	9100002045	1	WHEELS CASTOR KIT
	8	9100001992	1	CONTAINER PLAST. F BATTERY CHARGER PKD
	9	1466337000	1	TIE CABLE 4.8X430 WHITE 2 PCS SET
	10	9100002046	1	HARDWARE VACUUM AND REAR WHEELS KIT

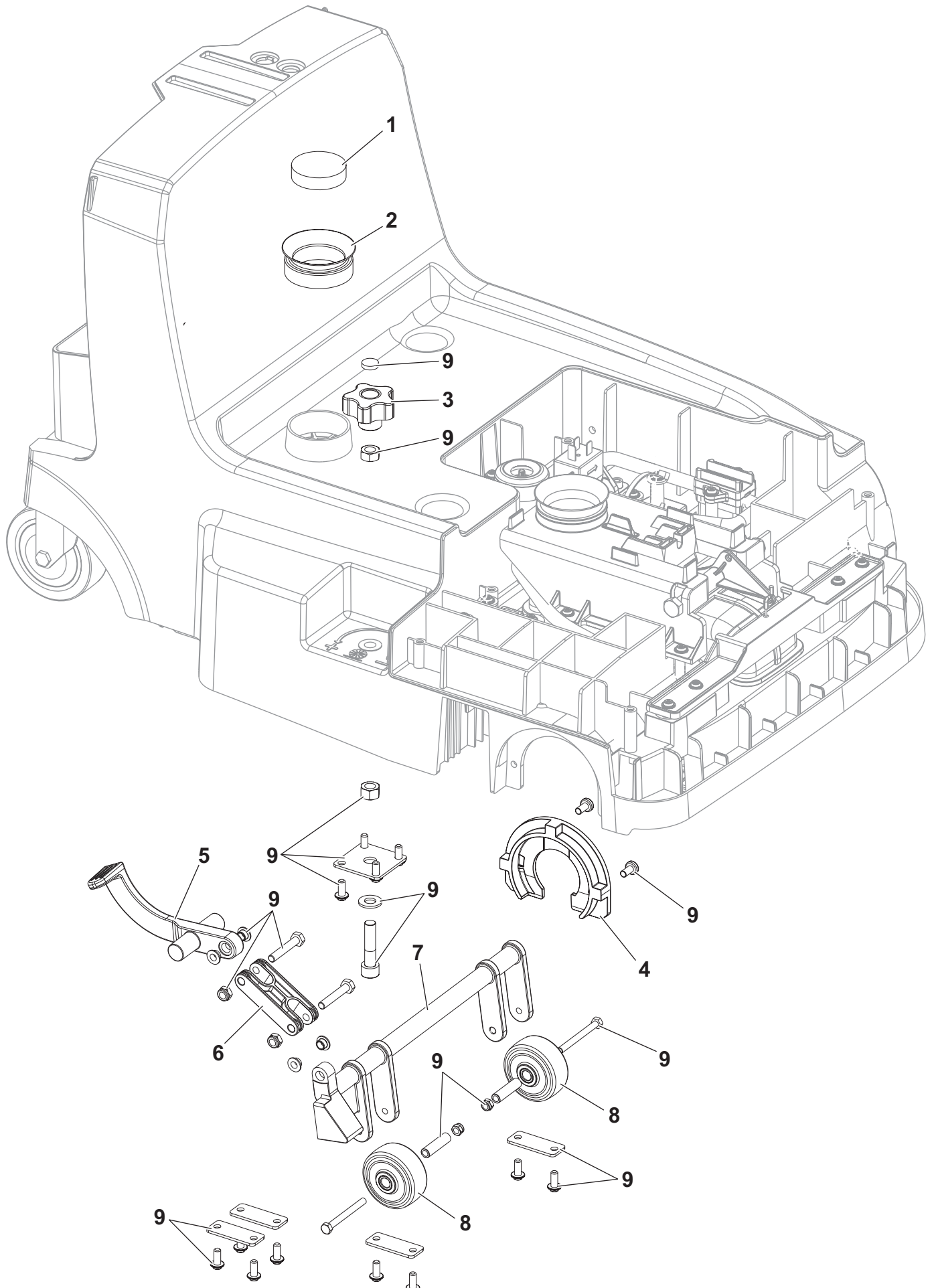
CHASSIS - SOLUTION AND VAC CHAMBER



CHASSIS - SOLUTION AND VAC CHAMBER

KIT	ITEM	REF. NO.	QTY	DESCRIPTION
	1	9100001959	1	CHASSIS PLAST. GREY PKD
	2	9100001995	1	HARNESS WATER PUMP PKD
	3	9100002047	1	FILTER PLAST. F WATER PUMP KIT
	4	9100001997	1	SUPPORT PLAST. F WATER FILTER PKD
	5	9100001981	1	PUMP WATER 24V 18W 21L/H PKD
	6	9100002048	1	HOSES KIT
	7	9100002049	1	SENSOR CAPACITIVE F WATER FLOW KIT
	8	9100001977	4	HOLDER SQUEEGEE PLAST. PKD
	9	9100001984	4	SPRING COMPRESS. D.E.17.6 WIRE D.1.2 PKD
	10	9100001975	2	DISPENSER WATER SPRAY SOFT PLAST. PKD
	11	9100001978	1	PLATE ALU SQUEEGEE LIFTER PKD
	12	9100001980	1	HOOK METAL F FRONT SQUEEGEE LIFT. PKD
	13	9100001979	1	ROD LIFTING SQUEEGEE PLAST. PKD
	14	9100001974	1	CHAMBER VACUUMING RUBBER PKD
	15	9100001976	1	SUPPORT PLAST. F VAC. CHAMBER PKD
	16	9100002044	1	HARDWARE SOLUTION VAC CHAMBER KIT

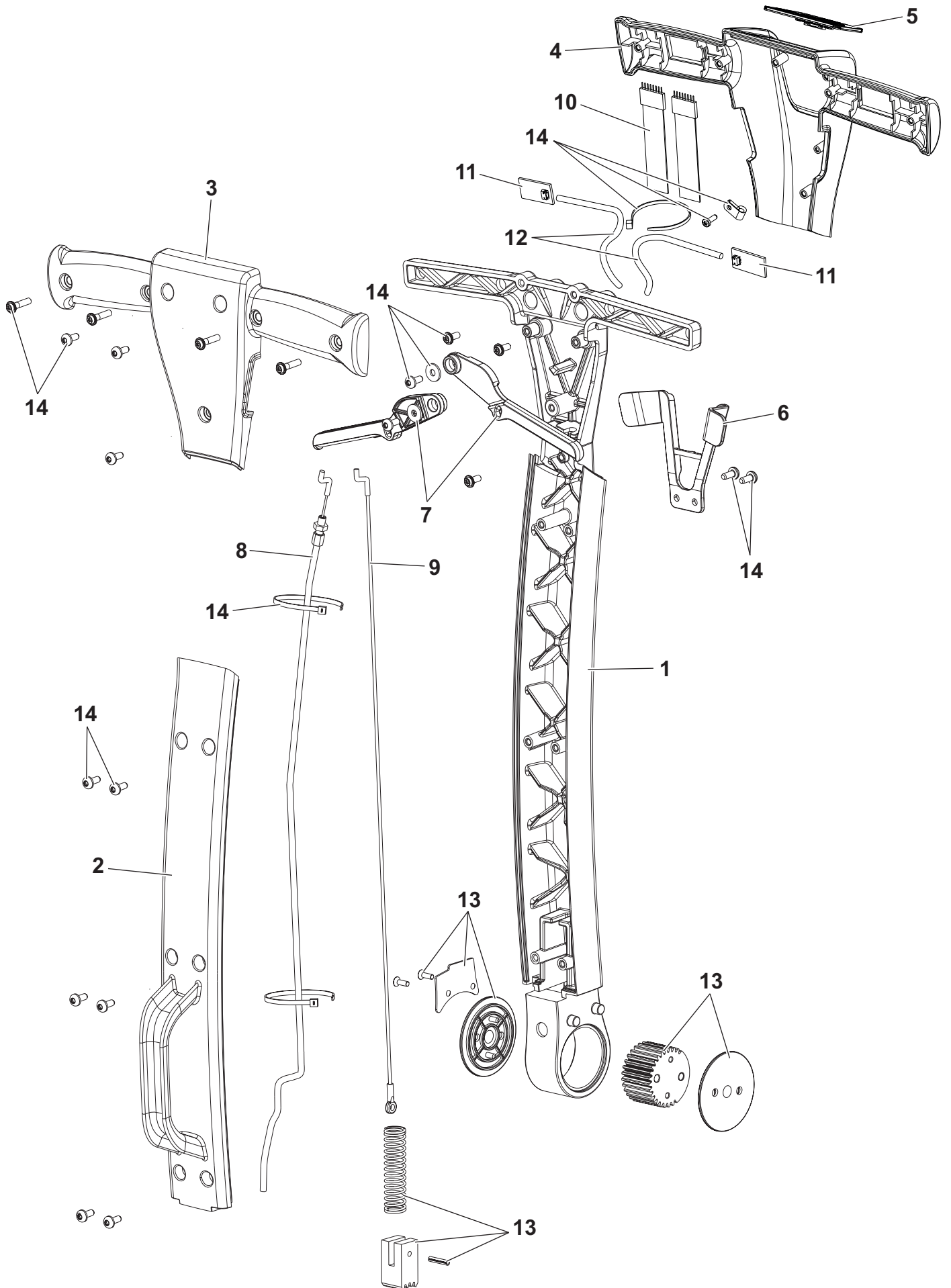
CHASSIS - PEDAL WHEELS



CHASSIS - PEDAL WHEELS

KIT	ITEM	REF. NO.	QTY	DESCRIPTION
	1	9100001278	1	FILTER VACUUM MOTOR PKD
	2	9100001958	1	GASKET PKD
	3	9100002017	1	KNOB M8 PKD
	4	9100001973	1	SUPPORT ALU F BRUSH HOOKING PKD
	5	9100001982	1	LEVER PLAST. F PEDAL PKD
	6	9100001962	1	PEDAL ALU F MACHINE PARKING PKD
	7	9100001961	1	SUPPORT ALU F FIXED WHEELS PKD
	8	9100000559	2	WHEEL D.51 GREY PKD
	9	9100002043	1	HARDWARE PEDAL WHEELS KIT

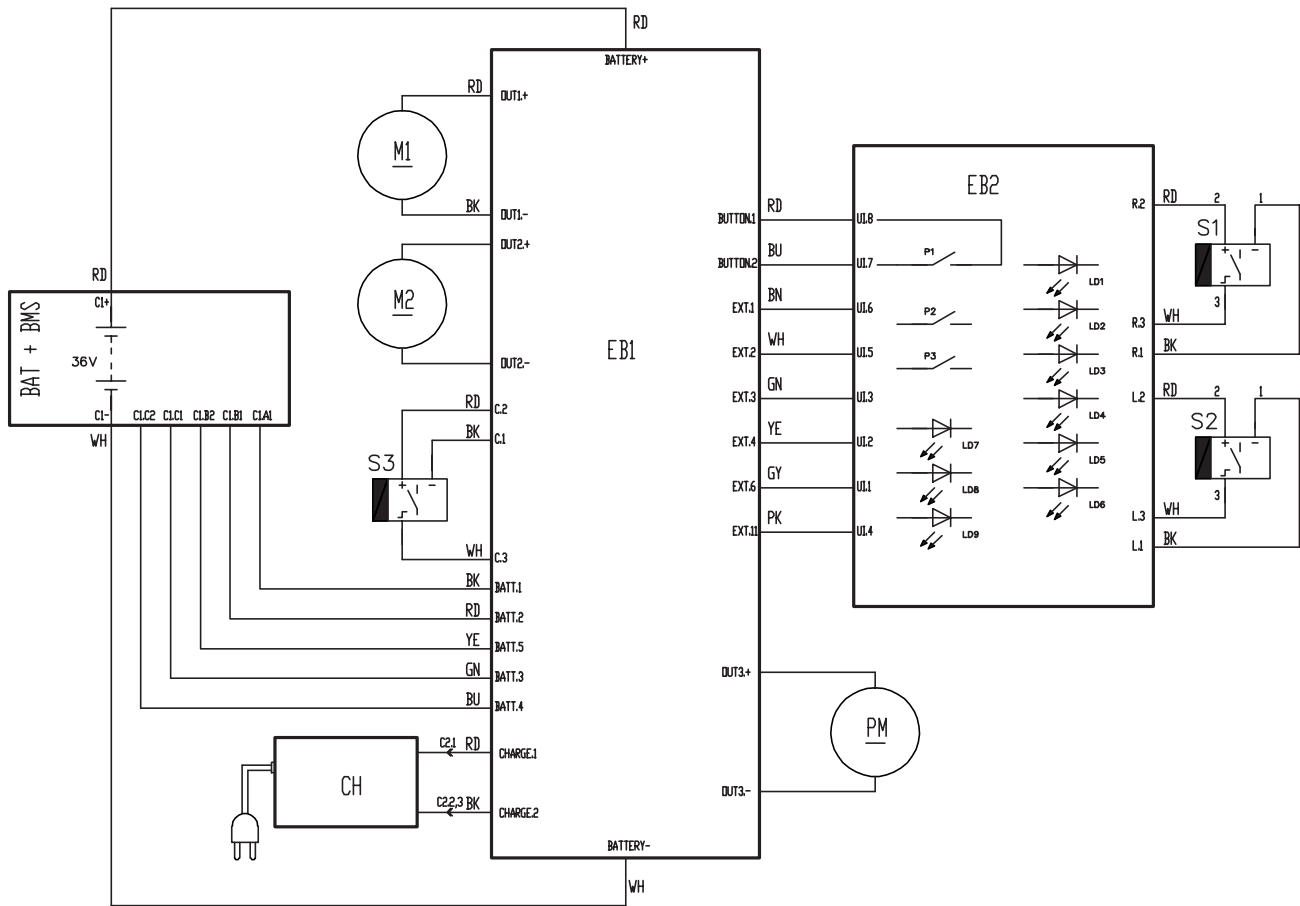
HANDLE BAR



HANDLE BAR

KIT	ITEM	REF. NO.	QTY	DESCRIPTION
	1	9100001999	1	HANDLE BAR ALU PKD
	2	9100002004	1	COVER PLAST. GREY F HANDLE PKD
	3	9100002001	1	COVER LOWER PLAST. GREY F HANDLE PKD
	4	9100002000	1	COVER UPPER PLAST. GREY F HANDLE PKD
	5	9100001985	1	CONTROLLER USER INTERFACE PKD
	6	9100002005	1	LOCK LEVER PLAST. PKD
	7	9100002003	2	LEVER ALU F HANDLE ADJUST. PKD
	8	9100002002	1	CABLE LIFTING SQUEEGEE PKD
	9	9100001998	1	CABLE HADLE ADJUSTING PKD
	10	9100001986	1	HARNESS HANDLE BAR PKD
	11	9100002016	2	SENSOR CAPACITIVE PKD
	12	9100002006	2	HARNESS HANDLE BAR SENSOR PKD
	13	9100002020	1	LOCK HANDLE KIT
	14	9100002021	1	HARDWARE HANDLE BAR KIT

WIRING DIAGRAM



WIRING DIAGRAM

KEY	REF. NO.	QTY	DESCRIPTION
BAT	9100002070	1	BATTERY LI 36V 10S4P
BMS			
C1	9100002038	1	HARNESS BATTERY KIT
CH	9100002058	1	CHARGER BATTERY LI 100-240V 1.5A
EB1	9100001960	1	CONTROLLER MAIN MACH.P24 PROGR.PKD
EB2	9100001985	1	CONTROLLER USER INTERFACE PKD
M1	9100001966	1	MOTOR BRUSH 180W 36V PKD
M2	9100001987	1	MOTOR VACUUM 36V 200W PKD
PM	9100001981	1	PUMP WATER 24V 18W 21L/H PKD
S1	9100002016	1	SENSOR CAPACITIVE PKD
S2	9100002016	1	SENSOR CAPACITIVE PKD
S3	9100002049	1	SENSOR CAPACITIVE F WATER FLOW KIT

KEY	COLOUR
BK	BLACK
BU	LIGHT BLUE
BN	BROWN
GN	GREEN
GY	GREY
OG	ORANGE

KEY	COLOUR
PK	PINK
RD	RED
VT	VIOLET
WH	WHITE
YE	YELLOW

RECOMMENDED PARTS

REF. NO.	QTY	DESCRIPTION
NORMAL WEAR		
9100002066	1	BRUSH CYL 340MM MEDIUM NYLON WHITE
9100002063	1	SQUEEGEE 360MM GREY RUBBER 2 PCS SET
ORDINARY MAINTENANCE		
9100001993	1	GASKET BULB REINFORCED -SKEIN PKD
9100001971	1	BELT TIMING HTD/OMEGA 669 3M 09 PKD
9100001987	1	MOTOR VACUUM 36V 200W PKD
9100001975	2	DISPENSER WATER SPRAY SOFT PLAST. PKD
9100002045	1	WHEELS CASTOR KIT
9100001981	1	PUMP WATER 24V 18W 21L/H PKD
9100000559	2	WHEEL D.51 GREY PKD
9100002002	1	CABLE LIFTING SQUEEGEE PKD
EXTRAORDINARY MAINTENANCE		
9100002070	1	BATTERY PACK, 36 VOLT, 10S4P
9100002058	1	CHARGER BATTERY LI 100-240V 1.5A
9100002029	1	VALVE F SOLUTION TANK KIT
9100001957	1	HUB TRACTION BRUSH PLAST. PKD
9100001966	1	MOTOR BRUSH 180W 36V PKD
9100001960	1	CONTROLLER MAIN MACH.P24 PROGR.PKD
9100001988	1	BUMPER FRONT PLAST. PKD
9100001974	1	CHAMBER VACUUMING RUBBER PKD
9100002048	1	HOSES KIT
9100002047	1	FILTER PLAST. F WATER PUMP KIT
9100001998	1	CABLE HADLE ADJUSTING PKD
9100001985	1	CONTROLLER USER INTERFACE PKD
9100002016	2	SENSOR CAPACITIVE PKD
9100002049	1	SENSOR CAPACITIVE F WATER FLOW KIT

ACCESSORIES/ OPTIONAL

REF. NO.	QTY	DESCRIPTION
9100002066	1	BRUSH CYL 340MM MEDIUM NYLON WHITE
9100002067	1	BRUSH CYL 340MM HARD GRIT 320 GREY
9100002068	1	BRUSH CYL 340MM MICROFIBRE
9100002069	1	BRUSH CYL 340MM SOFT NYLON BLACK
9100002063	1	SQUEEGEE 360MM GREY RUBBER 2 PCS SET
9100002064	1	SQUEEGEE 360MM PU 2 PCS SET
9100002057	1	BATTERY LI PACK US
9100002058	1	CHARGER BATTERY LI 100-240V 1.5A
9100002070	1	BATTERY LI 36V 10S4P
9100002059	1	HANDLE BATTERY



9435 Winnetka Avenue North
Brookly Park, MN 55445
www.advance-us.com
Phone: 800-989-2235
Fax: 800-989-6566
©2016 Nilfisk, Inc.

A Nilfisk Brand