



Electronic Service Manuals

This electronic document is provided as a service to our customers. We do not create the contents of the information contained in this document. Should you have detailed questions pertaining to the information contained in this document, you may contact Michco, or the manufacturer which provided the original information in this electronic deliverable. Michco's only part in this electronic deliverable was the electronic assembly process.

You may contact Michco through the following methods:
Phone (517) 484-9312 or (800) 331-3339 MI, OH, IN only
2011 N. High St. -- Lansing, Michigan -- 48906
Fax: (517) 484-9836
Email: CustServ@Michco.com
Web site: www.Michco.Com
Parts Web site: www.FloorMachineParts.Com

Order Parts on Line at:
www.FloorMachineParts.Com

Directly to Parts & Service:
By Email: **Shop@Michco.com**
By Fax: (517) 702-2041
By Voice: Use numbers above.

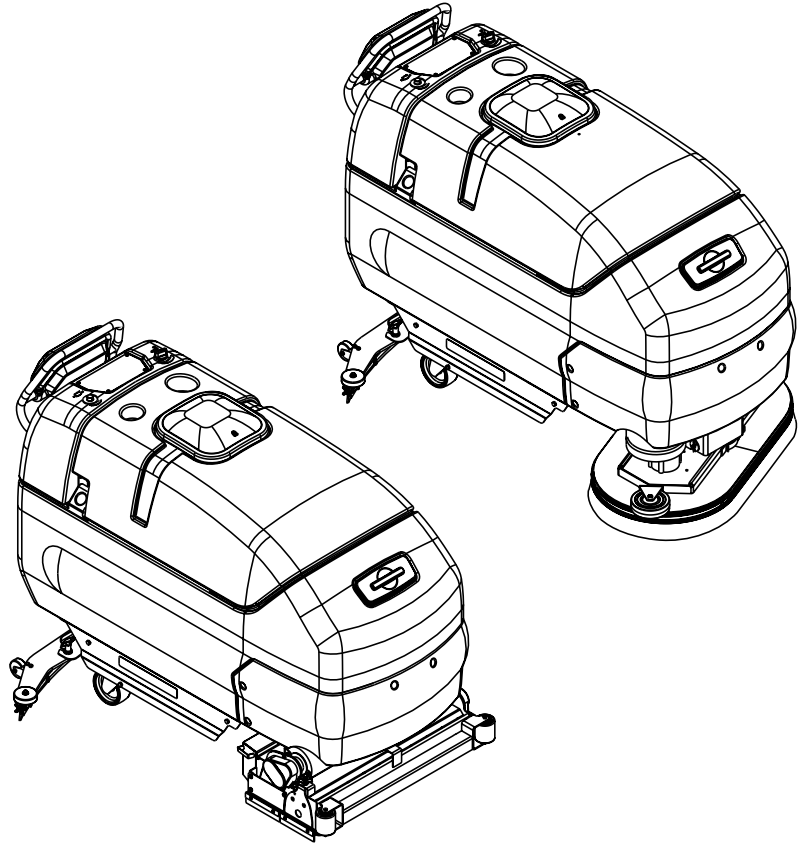
Serving the Cleaning Industry Since 1922

Notice: All copyrighted material remains property of original owners, all trademarks are property of respective owners. Manuals are subject to Manufacturer's reproduction limitations. Originals or reproductions were provided by manufacturers through a request. We make no warranty as to the correctness of information provided in this document and you assume all risk.

I-MAX™ 28C, 32C

BA 750C

C-MAX™ 34ST



PARTS LIST

Advance MODELS 56397400(28C), 56397401(32C)

56397403(34ST)

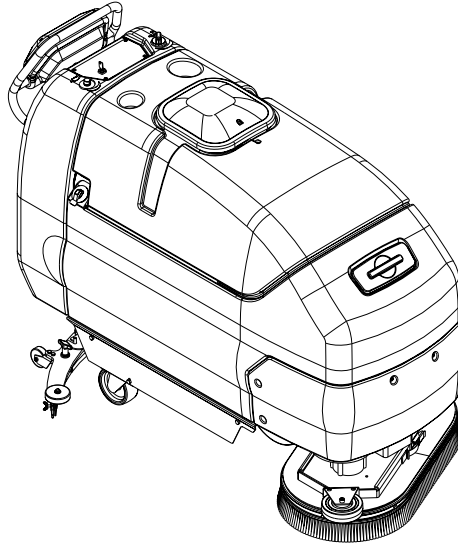
Nilfisk MODEL 56397402



**Nilfisk
Advance**

setting standards

2/02 revised 8/04 FORM NO. 56042422
BOOK E SECTION 11.9.1

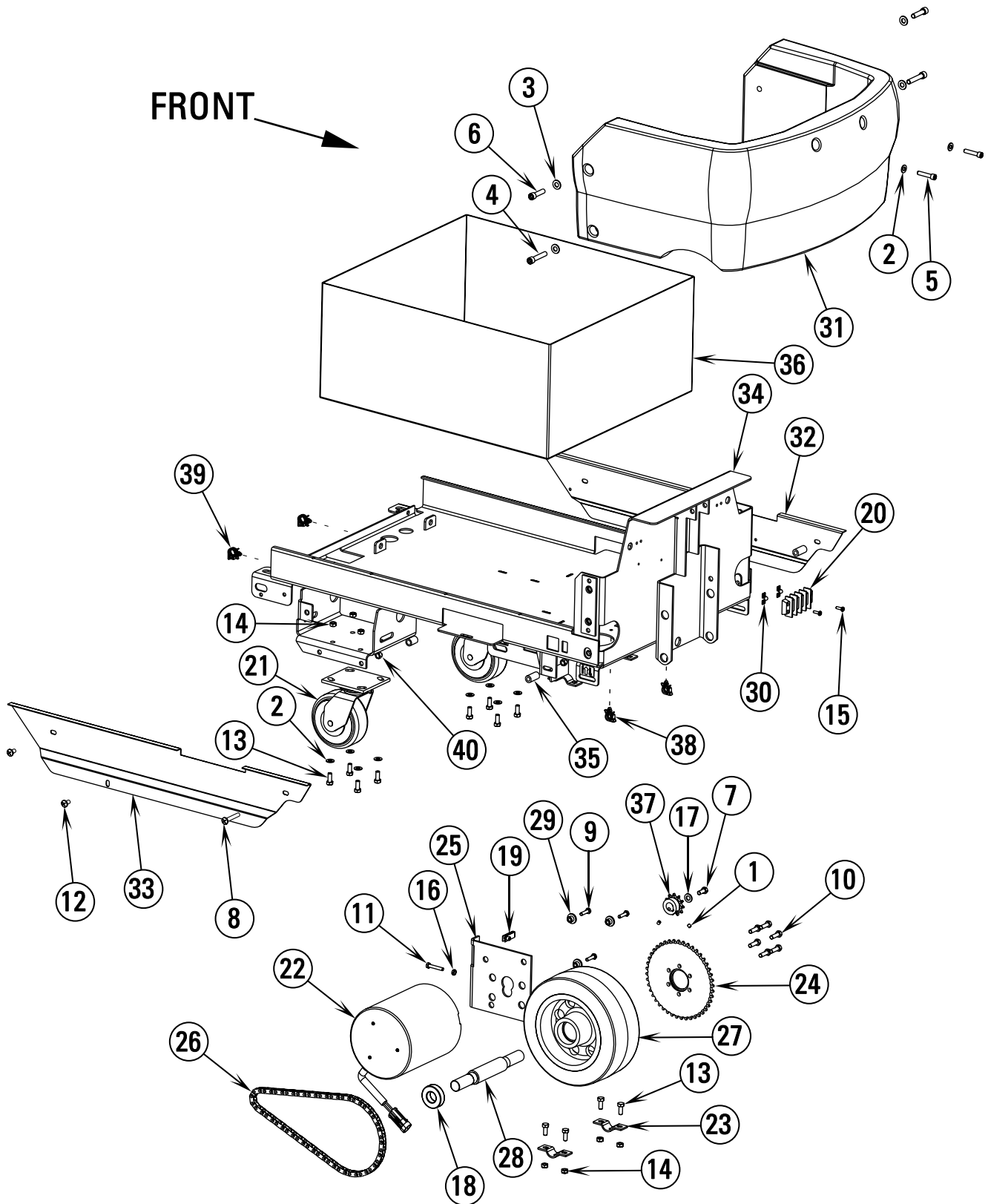


DESCRIPTION	PLAN
CHASSIS SYSTEM	E-11.9.1-3
CONTROL / ELECTRICAL SYSTEM-1	E-11.9.1-5
CONTROL / ELECTRICAL SYSTEM-2	E-11.9.1-7
HANDLE PADDLE ASSEMBLY	E-11.9.1-9
DECAL SYSTEM	E-11.9.1-11
RECOVERY SYSTEM	E-11.9.1-13
SCRUB SYSTEM-CYLINDRICAL	E-11.9.1-15
SCRUB SYSTEM-DISK	E-11.9.1-17
SCRUB SYSTEM SKIRTS-DISK	E-11.9.1-19
SOLUTION SYSTEM	E-11.9.1-21
SQUEEGEE SYSTEM	E-11.9.1-23
SQUEEGEE ASSEMBLY-I-MAX 28C / BA 750C	E-11.9.1-25
SQUEEGEE ASSEMBLY-I-MAX 32C / CMAX 34ST	E-11.9.1-27
SCHEMATIC	E-11.9.1-29
PARKING BRAKE KIT	E-11.9.1-31
INDUSTRIAL BUMPER KIT - CYLINDRICAL	E-11.9.1-33
BRUSH CLICK-OFF KIT	E-11.9.1-35
INDUSTRIAL BUMPER KIT - CMAX™ 34ST	E-11.9.1-37
BRUSH / DISC SELECTOR GUIDE (DISC)	E-11.9.1-38
BRUSH SELECTOR GUIDE (CYLINDRICAL)	E-11.9.1-39

WHEN ORDERING PARTS

- * Use the 8 digit numbers from the "Ref. No." columns in this parts list.
- * Specify the model and serial number of the machine.
- * Use the space below to record the model and serial number for future reference.

Model _____ Serial No. _____

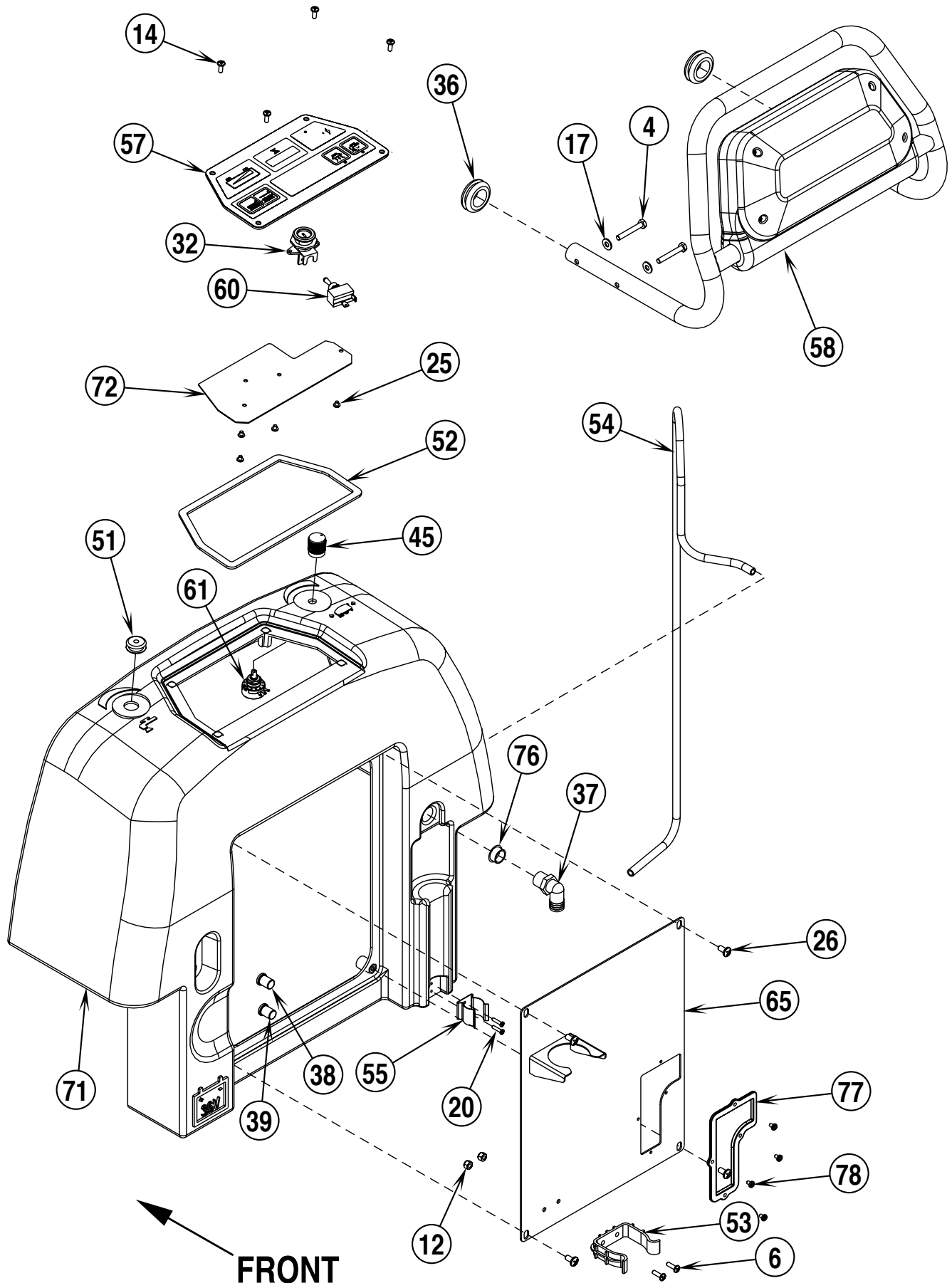


02-2	CHASSIS SYSTEM	BOOK E		
02-8	I-MAX™ 28C, 32C / CMAX™ 34ST / BA 750C	E	11.9.1	3

Item	Ref. No.	Qty	Description
1	56001841	2	Scr, Soc Set Loc 1/4-20 x .25
2	56001939	10	Wsh, Flt SAE 5/16
3	56002063	4	Wsh, Flt SAE 3/8
4	56002133	2	Scr, Soc Hd 3/8-16 x 2.00
5	56002201	2	Scr, Soc Hd 5/16-18 x 1.50
6	56002316	2	Scr, Soc Hd 3/8-16 x 1.50
7	56002667	1	Scr, Hex Hd 5/16-18 x .75
8	56003613	2	Scr, Pan Phil 5/16-18 x 2.00
9	56002883	3	Scr, Hex Hd SS 1/4-20 x 1.00
10	56003073	6	Scr, Hex Hd Loc 5/16-18 x 1.00
11	56003125	1	Scr, Hex Thd To Hd SS 1/4-20 x 1.50
12	56003003	4	Scr, Pan Phil 5/16-18 x .62
13	56003179	12	Scr, Hex Thd To Hd M8-1.25 x 20mm
14	56003389	12	Nut, Hex Nyl Loc M8-1.25
15	56009042	2	Scr, Pan Phil Thd Form 10-24 x .62
16	56009087	1	Nut, Hex Jam 1/4-20
17	56009214	1	Wsh, Flt .406 x .750 x .090
18	56479430	2	Bearing, Ball
19	56009289	1	Nut, U Multi-Thread 1/4-20
20	56026111	1	Term. Block, 4 Term. 50 Amp
21	56055658	2	Caster, Swivel
22	56212175	1	Motor, 36VDC 1/2HP
*	56026857	4	Carbon Brush
23	56396039	2	Clamp, Axle
24	56396022	1	Sprocket
25	56396267	1	Bracket, Tension-Traction Drive
26	56396276	1	Chain, #40
27	56396350	1	Wheel, 10.00 x 4.00
28	56396351	1	Axle
29	56397085	3	Bushing
30	56397184	2	Plate, Jumper
31	56397221	1	Cover, Front
32	56397281	1	Skirt, LH
33	56397282	1	Skirt, RH
34	56397501	1	Upper Chassis Weld't.
35	56397522	2	Spacer, Phenolic
36	56397548	1	Box, Batteries
37	56741122	1	Sprocket
38	56386407	2	Clip, Conduit
39	56900756	2	Clip, Conduit
40	56002701	4	Nut, Hex Nyl Loc 5/16-18
**	56396302	1	Kit, Parking Brake (All Models)
**	56396308	1	Kit, Industrial Bumper (I-MAX 28C, 32C)
**	56396318	1	Kit, Brush Click-Off 36V (All Models)
**	56396322	1	Kit, Industrial Bumper (CMAX 34ST)

* = Not Shown

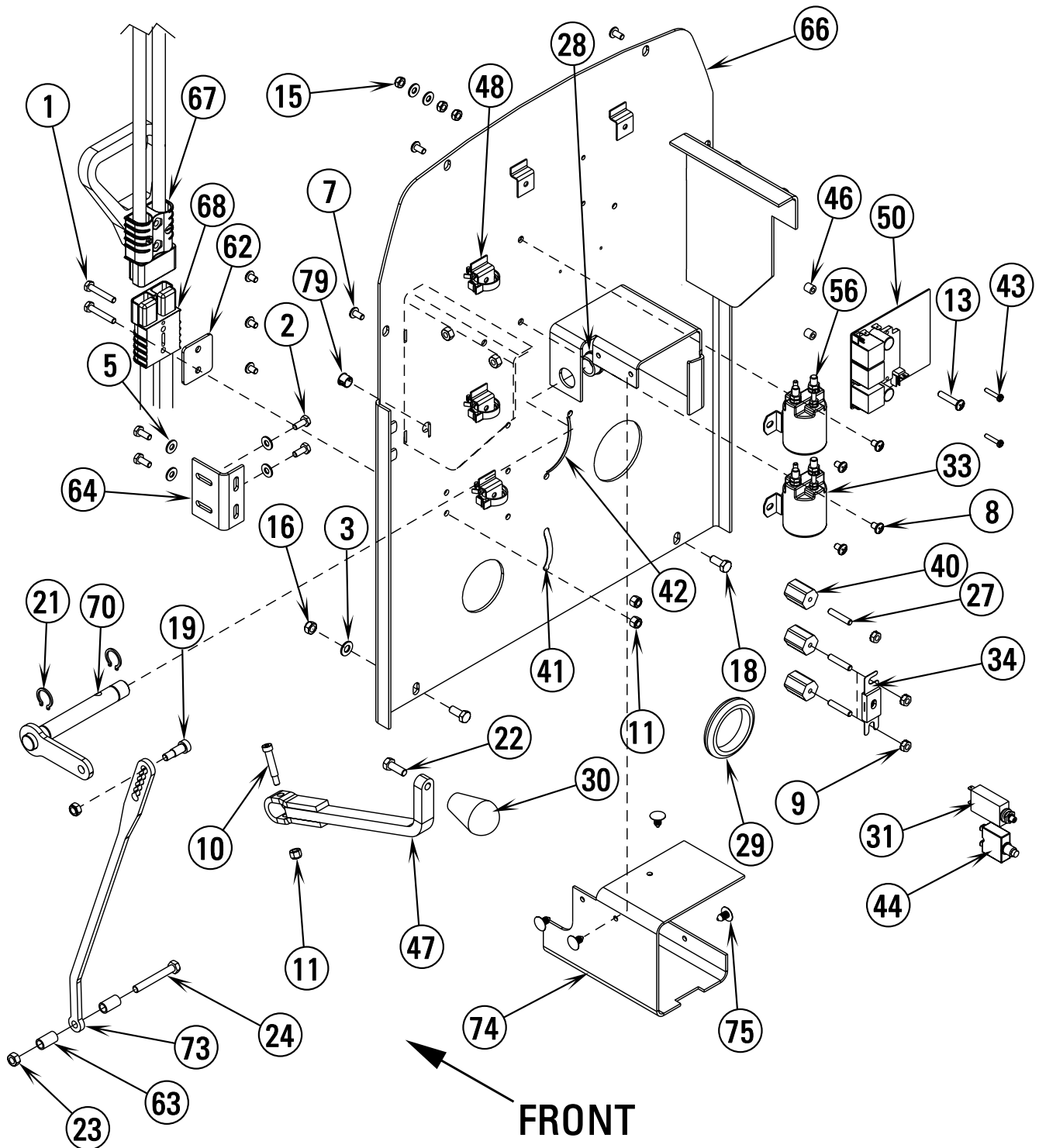
** = Optional



02-2	CONTROL / ELECTRICAL SYSTEM-1	BOOK E		
04-8	I-MAX™ 28C, 32C / CMAX™ 34ST / BA 750C	E	11.9.1	5

Item	Ref. No.	Qty	Description
4	56001967	4	Scr, Hex Hd 1/4-20 x 1.75
6	56002124	2	Scr, Pan Phil 10-24 x .62
12	56002768	2	Nut, Hex Nyl Loc 10-24
14	56002831	4	Scr, Pan Phil Blk 10-24 x .50
17	56002859	4	Wsh, Flt SAE SS 1/4
20	56003197	2	Scr, Pan Phil Plastite 6-18 x .62
25	56009055	4	Scr, Pan Phil 8-32 x .19
26	56009069	4	Scr, Pan Phil Loc 1/4-20 x .50
32	56393325	1	Bracket, Keylock
*	56393415	A/R	Replacement Key
36	56418199	2	Grommet
37	56456802	1	Barb, 90 Elbow 11/16 x 3/4NPT
38	56459367	1	Boot, Reset Button
39	56459369	1	Boot, Reset Button
45	56056596	1	Knob
51	56396149	1	Grommet
52	56396151	1	Gasket
53	56396199	1	Clamp, Plastic
54	56396204	1	Hose, PVC 1/4 x 3/8 x 48
55	56396252	1	Clip, Spring
57	56396297	1	Display Panel Assy
58	56396298	1	Paddle, Handle Assy
60	56396305	1	Switch, SPST Toggle (Main)
61	56397123	1	Potentiometer, 25K
65	56397504	1	Weld't, Panel Rear TSBUS2002-830
71	56397515	1	Cover, Rear
72	56397516	1	Control PCB Assy TSBUS2004-870
76	56900041	1	Plug, Cap
77	56396331	1	Wear Strip
78	56009036	4	Scr, Pan Phil Thd Form 8-32 x .25

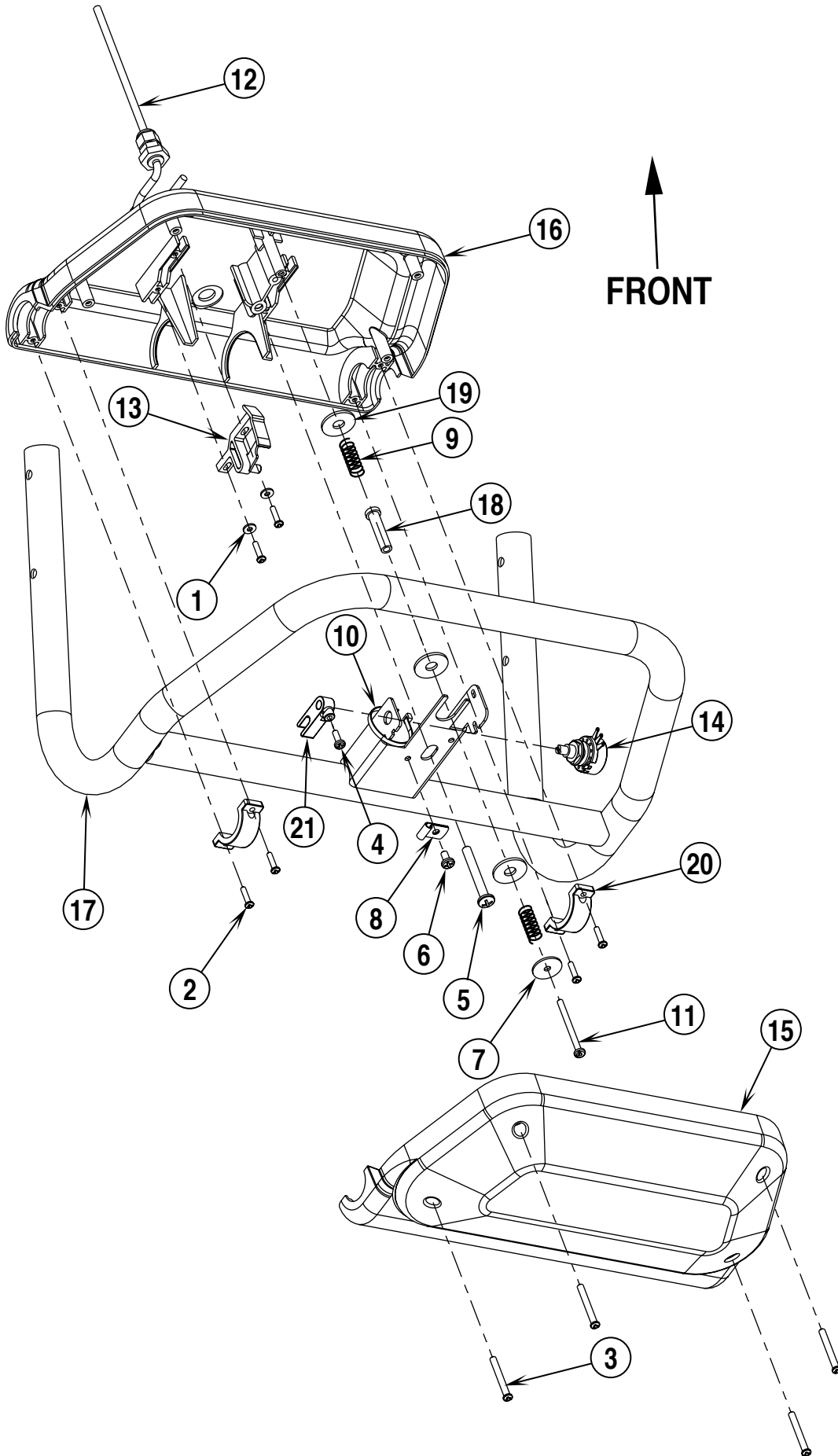
* = Not Shown



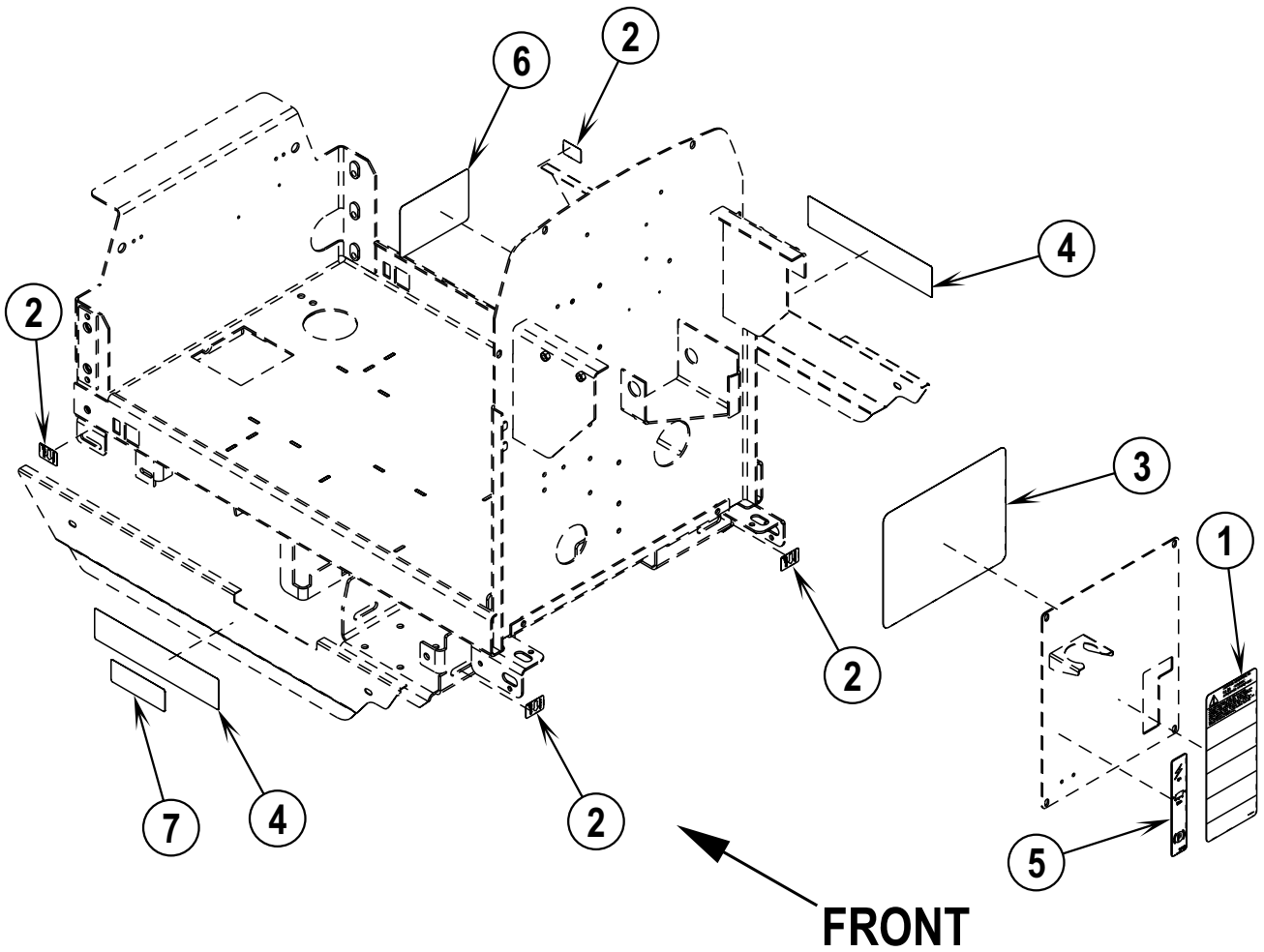
02-2	CONTROL / ELECTRICAL SYSTEM-2	BOOK E		
04-8	I-MAX™ 28C, 32C / CMAX™ 34ST / BA 750C	E	11.9.1	7

Item	Ref. No.	Qty	Description
1	56001833	2	Scr, Hex Hd 1/4-20 x 1.50
2	56001836	8	Scr, Hex Hd 1/4-20 x .62
3	56001939	2	Wsh, Flt SAE 5/16
5	56002098	10	Wsh, Flt SAE 1/4
7	56002145	4	Scr, Pan Phil 1/4-20 x .50
8	56002462	7	Scr, Pan Phil 1/4-20 x .38
9	56002561	3	Nut, Hex W/SHPRF 1/4-20
10	56002619	1	Scr, Soc Shd .31 x 1.25 x 1/4-20
11	56002708	3	Nut, Hex Nyl Loc 1/4-20
13	56002825	1	Scr, Pan Phil 1/4-20 x 1.25
15	56002840	3	Nut, Hex Nyl Loc-Thin 1/4-20
16	56002851	3	Nut, Hex Nyl Loc-Thin SS 5/16-18
18	56002956	2	Scr, Hex Hd Loc 5/16-18 x .75
19	56002962	1	Scr, Soc Shd .38 x .62 x 5/16-18
21	56003257	2	Ring, Ret Ext
22	56003335	1	Scr, Hex Loc SS 5/16-18 x .88
23	56003405	1	Nut, Hex Nyl Loc SS M8-1.25
24	56003464	1	Scr, Hex Hd SS M8-1.25 x 60mm
27	56009203	3	Stud, 1/4-20
28	56250414	2	Bearing, Flange
29	56262531	1	Grommet
30	56364527	1	Knob
31	56387328	1	Circuit Breaker, 5 Amp (Controls)
33	56395450		Contactor, 36V (Brush Motor)
34	56412089	1	Fuse, 150 Amp
40	56469858	3	Electrical Mount
41	56477613	1	Tie, Cable
42	56478523	1	Tie, Cable
43	56009034	2	Scr, Pan Phil Thd Form 8-32 x .88
44	56026198	1	Circuit Breaker, 30 Amp (Wheel Drive)
46	56057428	2	Spacer, Aluminum
47	56212035	1	Lift Lever Weld't.
48	56212190	3	Clip, Conduit
50	56393721	1	Control, DC Curtis
56	56395450	1	Contactor, 36V (Vac Motor)
62	56397189	1	Spacer
63	56397286	2	Spacer
64	56397291	2	Bracket
66	56397506	1	Weld't, Electrical Panel
67	56398000	1	Connector Assy TSBUS2003-841 (Connects to Batteries)
68	56397509	1	Connector Assy (Connects to Machine)
70	56397513	1	Weld't, Lift Shaft
73	56397532	1	Link, Squeegee Lift
74	56396324	1	Flap, Rubber
75	56212241	4	Clip, Panel
79	56323560	1	Plug, Cap
*	56456460	4	Cable Assy 4 x 12 (Battery Interconnect)
*	56416445	1	Cable Assy 4 AWG (Battery Interconnect)
*	56396304	1	Cable Assy 6 AWG
*	56372673	12	Boot, Battery Post
*	56478246	13	Tie, Cable
*	56396283	1	Harness, Main TSBUS2004-870

* = Not Shown

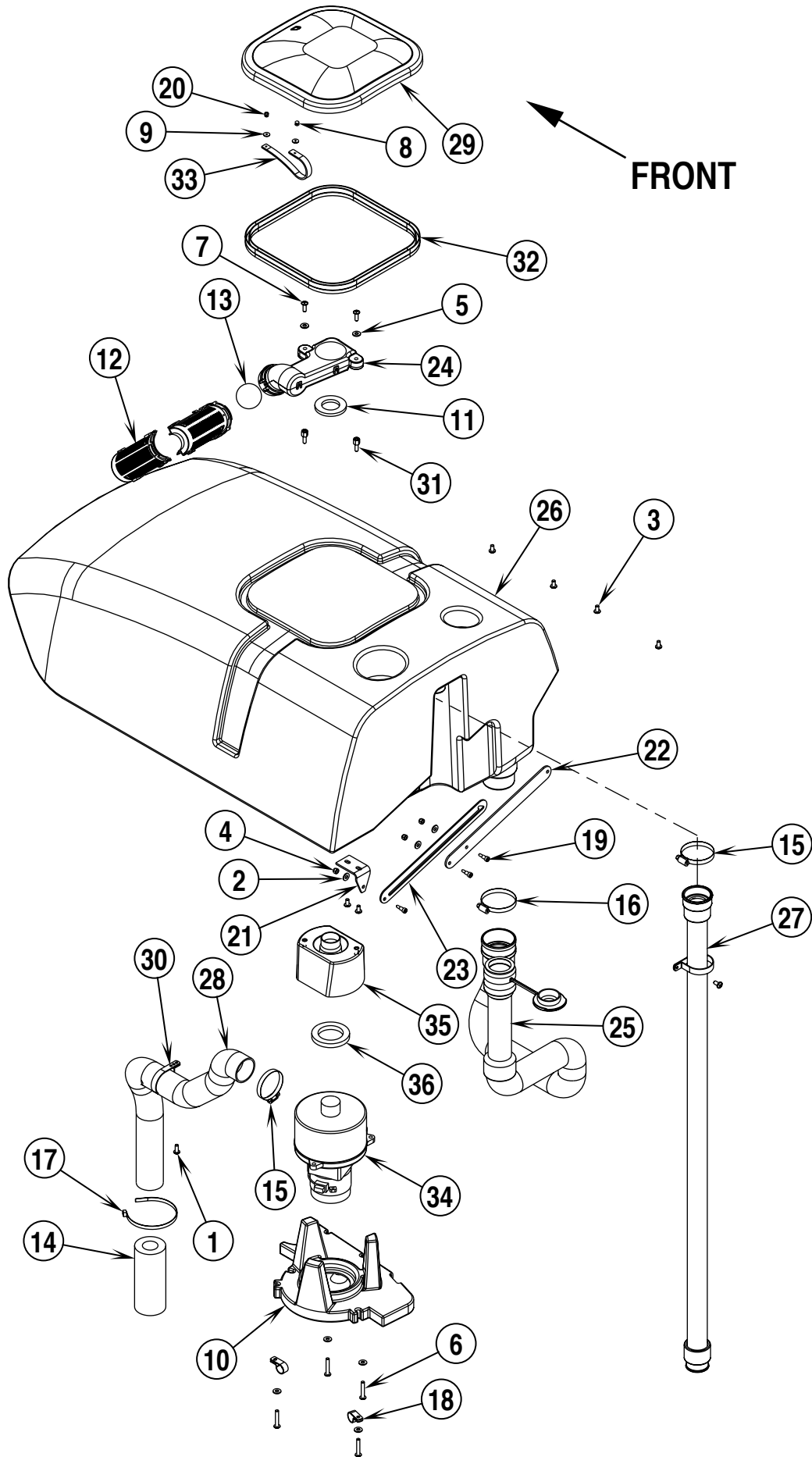


Item	Ref. No.	Qty	Description
	56396298	1	Paddle, Handle Assembly (#1-21)
1	56002006	2	Wsh, Flt SAE #6
2	56003197	6	Scr, Pan Phil Plastite 6-18 x .62
3	56003199	4	Scr, Pan Phil Plastite 8-15 x 1.50
4	56003354	1	Scr, Pan Phil M4 x 12
5	56003527	1	Scr, Pan Phil Plastite 1/4-10 x 2.00
6	56009030	1	Scr, Pan Phil Thd Form 10-24 x .38
7	56009096	1	Wsh, Flt .193 x .875 x .060
8	56220507	1	Clamp, P
9	56325654	2	Spring, Compression
10	56478246	1	Tie, Cable
11	56009287	1	Scr, Pan Phil Type B 8 x 2.00
12	56396299	1	Harness, Handle
13	56397015	1	Cam Controller
14	56397029	1	Potentiometer, 5K
15	56397030	1	Paddle, Front Molded
16	56397031	1	Paddle, Back Molded
17	56397034	1	Weldment, Handle
18	56397109	1	Sleeve
19	56397170	3	Washer, Plastic
20	56397171	2	Clamp
21	56397172	1	Potentiometer Fork



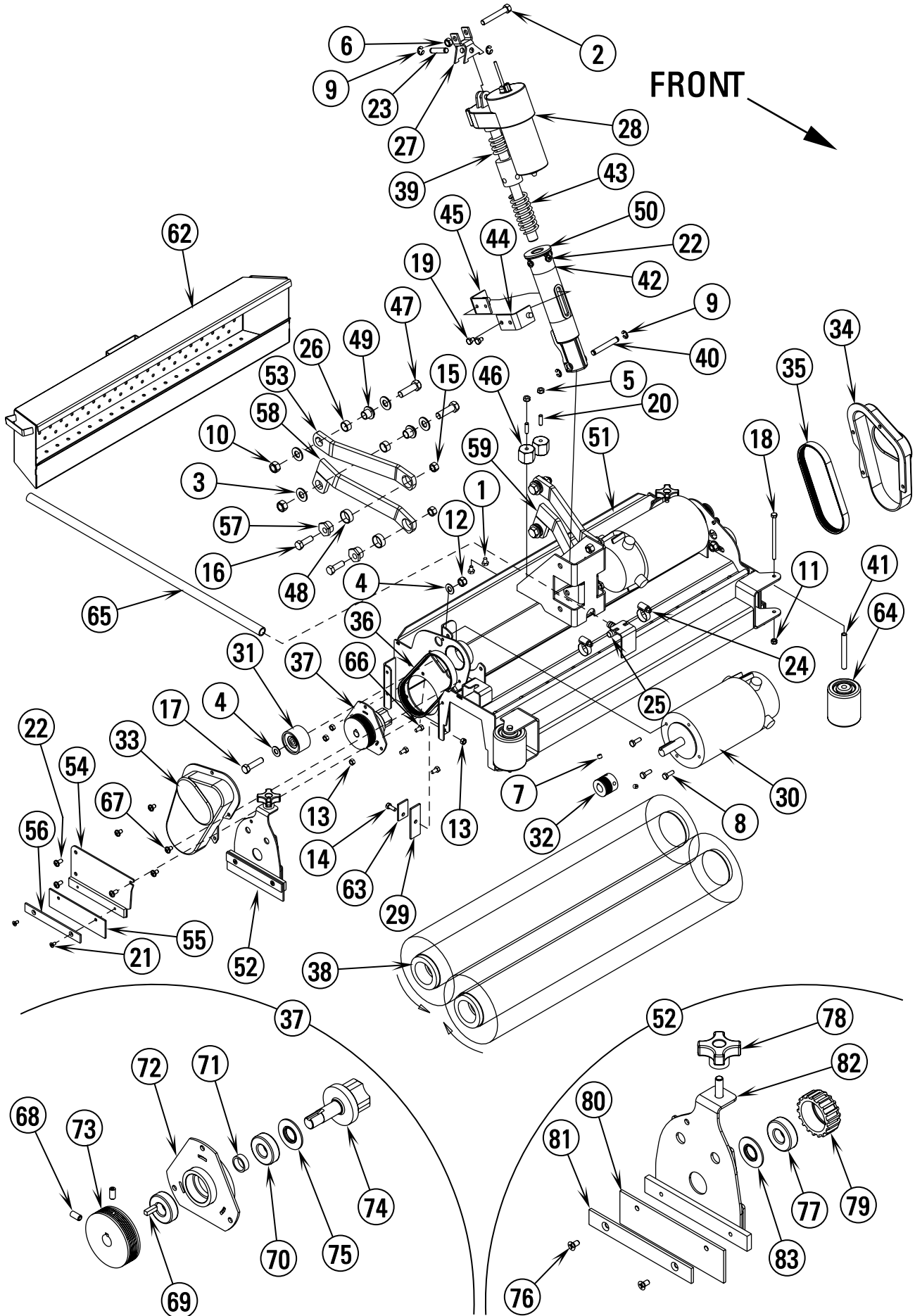
02-2	DECAL SYSTEM	BOOK E		
04-3	I-MAX™ 28C, 32C / CMAX™ 34ST / BA 750C	E	11.9.1	11

Item	Ref. No.	Qty	Description
1	56014601	1	Decal, Caution
2	56015370	4	Decal, Tie Down
3	56015048	1	Decal, Electrical Schematic
4	56015053	2	Decal, I-MAX 28C
	56015054	2	Decal, I-MAX 32C
	56015055	2	Decal, BA750C
	56016683	2	Decal, CMAX 34ST
5	56015061	1	Decal, Circuit Breaker
6	56016413	1	Decal, Battery Wiring
7	56016680	1	Decal, Smart Solutions (CMAX 34ST only)



Item	Ref. No.	Qty	Description
1	56001993	1	Scr, Pan Phil 10-24 X .50
2	56002098	3	Wsh, Flt Sae 1/4
3	56002145	7	Scr, Pan Phil 1/4-20 X .50
4	56002768	3	Nut, Hex Nyl Loc 10-24
5	56002859	6	Wsh, Flt Sae SS 1/4
6	56002905	4	Scr, Pan Phil SS 1/4-20 X 1.50
7	56003067	2	Scr, Pan Phil SS 1/4-20 X 1.00
8	56003293	1	Rivot, Pop A/S .125 x .38/.50
9	56009098	2	Wsh, Flt SS .125 x .500 x .036
10	56302141	1	Vac Motor Duct
11	56302165	1	Gasket
12	56324497	2	Cage, Float
13	56391690	1	Ball, Float
14	56391807	1	Foam, Acoustical
15	56440213	2	Clamp, Hose SAE #32
16	56456797	1	Clamp, Hose SAE #36
17	56477613	1	Tie, Cable
18	56486112	2	Clamp, P
19	56003537	3	Scr, Soc Shd .25 x .38 x 10-24
20	56003642	1	Rivot, Pop .500 x .625
21	56057504	1	Bracket, Steel
22	56057505	1	Bar
23	56057508	1	Bar, Steel
24	56302142	1	Float Duct
25	56396031	1	Drain Hose
26	56396225	1	Tank, Recovery (Advance)
	56397534	1	Tank, Recovery (Nilfisk)
27	56396287	1	Vac Hose
28	56397040	1	Vacuum Exhaust Hose
29	56397045	1	Lid
30	56397095	2	Clamp, Hose
31	56397096	2	Spacer Bolt
32	56397151	1	Gasket
33	56397167	1	Strap, Retaining
34	56397228	1	Motor, Vac 36VDC
*	56212223	1	Carbon Brush Set
35	56397303	1	Spacer, Vac Motor
36	56397307	1	Gasket, Vac

* = Not Shown



02-2	SCRUB SYSTEM-CYLINDRICAL	BOOK E		
04-8	I-MAX™ 28C, 32C / CMAX™ 34ST / BA 750C	E	11.9.1	15

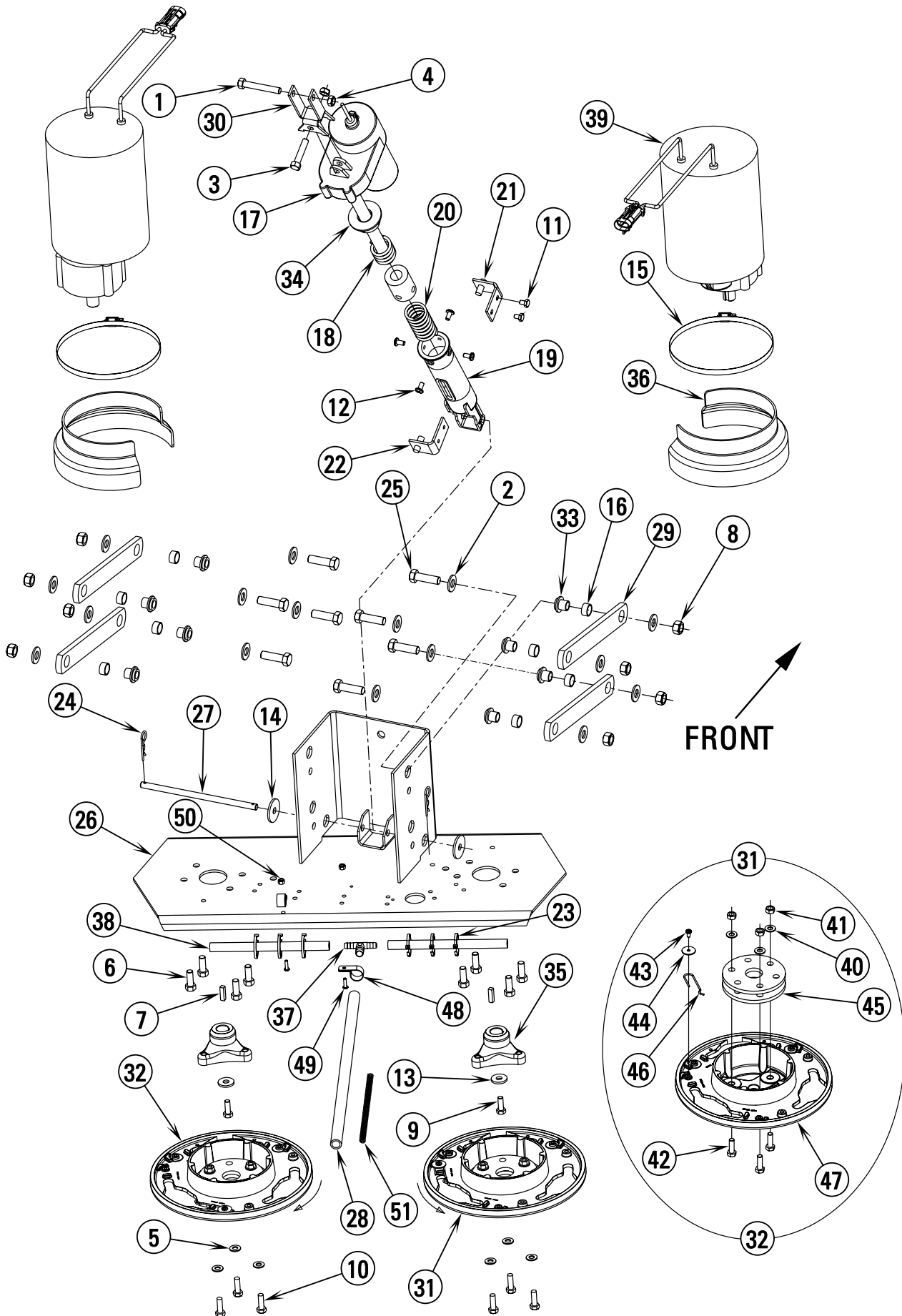
Item	Ref. No.	Qty	Description	Item	Ref. No.	Qty	Description
1	56001861	2	Scr, Hex Hd 1/4-20 x .38	46	56469858	2	Standoff, Insulated
2	56001873	1	Scr, Hex Hd 3/8-16 x 2.50	47	56003637	4	Scr, Hex M12-1.75 x 40mm
3	56001879	8	Wsh, Fit SAE 1/2	48	56250694	4	Bearing, Sleeve
4	56002063	4	Wsh, Fit SAE 3/8	49	56396196	4	Bushing
5	56002561	2	Nut, Hex W/SHPRF 1/4-20	50	56396268	1	Spring Housing Guide
6	56002841	1	Nut, Hex Nyl Loc-Thin 3/8-16	51	56397410	1	Housing Weld't. 28"
7	56002086	4	Scr, Soc Set Loc 5/16-18 x .25		56397425	1	Housing Weld't. 32"
8	56002948	6	Scr, Hex Hd Loc 1/4-20 x .75	52	56397444	2	Idler End Assy (#76-83) TSBUS2002-821
9	56003262	4	Ring, Ret Ext Type E .38 dia.	53	56397412	2	Arm
10	56003312	4	Nut, Hex Nyl Loc M12-1.75	54	56397413	2	Skirt Plate Weld't.
11	56003403	2	Nut, Hex Nyl Loc M6-1.00	55	56397414	2	Blade
12	56003406	2	Nut, Hex Nyl Loc M10-1.50	56	56397415	2	Strap
13	56003426	8	Nut, Hex Nyl Loc SS M6-1.00	57	56397430	4	Bushing, Offset
14	56003431	2	Scr, Hex Hd SS M6-1.00 x 16mm	58	56397431	1	Arm Weld't, Right
15	56003438	4	Nut, Hex Nyl Loc SS M10-1.50	59	56397432	1	Arm Weld't, Left
16	56003439	4	Scr, Hex Hd SS M10-1.50 x 30mm	60	56397439	1	Cable Assy, WHT 8 x 18 (Not Shown)
17	56003491	2	Scr, Hex M10-1.50 x 40mm	61	56397440	1	Cable Assy, BLK 8 x 18 (Not Shown)
18	56003492	2	Scr, Hex M6-1.00 x 95mm	62	56397442	1	Hopper Weld't. 28"
19	56009019	2	Scr, Hex Thd Form 1/4-20 x .38		56397443	1	Hopper Weld't. 32"
20	56009020	2	Stud	63	56410214	2	Strap
21	56009040	4	Scr, Flt Phil Thd Form 10-24 x .38	64	56412459	2	Wheel
22	56009062	10	Scr, Pan Phil Thd Form 1/4-20 x .50	65	56397599	1	Hose PVC Clear
23	56104760	1	Pin	66	56003211	6	Scr, Hex Hd SS M6-1.0 x 12MM
24	56219932	2	Clamp, Hose SAE #6	67	56003603	8	Scr, Pan Phil Thd Form 1/4-20 x .38
25	56262549	1	Tee, Barb				Drive End Assembly - NOTE #1
26	56370878	4	Bearing, Sleeve	68	56002119	2	Scr, Soc Set Loc 1/4-20 x .50 TSBUS2002-821
27	56392454	1	Yoke, Actuator	69	56003237	1	Key, Sq .19 x .62 TSBUS2002-821
28	56393303	1	Actuator, Motor TSBUS2004-870	70	56106070	2	Bearing, Ball TSBUS2002-821
*	56393790	2	Limit Switch	71	56407389	1	Spacer TSBUS2002-821
*	56470433	1	Carbon Brush Kit	72	56407556	1	Bearing Plate Weld't. TSBUS2002-821
*	56388520	1	Plastic Nut	73	56407442	1	Sheave, Poly-V TSBUS2002-821
29	56407391	2	Blade	74	56407557	1	Spindle TSBUS2002-821
30	56407431	2	Motor, 36VDC, .75HP	75	56407558	1	Washer, Bearing TSBUS2002-821
	56417489	1	Armature				Idler End Assembly - NOTE #2
	56407490	1	Bearing (2 required per motor)	76	56009040	2	Scr, Flt Phil Thd Form 10-24 x.38 TSBUS2002-821
	56407492	1	Brush Cap Assembly	77	56106070	1	Bearing, Ball TSBUS2002-821
	56407493	4	Brush Assembly	78	56407303	1	Knob TSBUS2002-821
	56407494	4	Brush Cover Cap	79	56407551	1	Hub TSBUS2002-821
31	56407432	2	Idler, Belt	80	56397414	1	Blade TSBUS2002-821
32	56407433	2	Sheave, Poly-V	81	56397415	1	Strap TSBUS2002-821
33	56407434	1	Guard, Right Belt	82	56397448	1	Idler Bearing Plate Weld't. TSBUS2002-821
34	56407435	1	Guard, Left Belt	83	56407558	1	Washer, Bearing TSBUS2002-821
35	56407465	1	Belt, Poly-V 180J6				
36	56407466	1	Belt, Poly-V 190J6	**	56412191	2	Cyl. Brush Soft Nylon 28"
37	56407559	2	Drive End Assy (#68-75) TSBUS2002-821	**	56412192	2	Cyl. Brush Hard Nylon 28"
				**	56412193	2	Cyl. Brush 180 Grit 28"
38	56412046	2	Brush, Polypropylene 28"	**	56412194	2	Cyl. Brush 80 Grit 28"
	56407475	2	Brush, Polypropylene 32"	**	56412195	2	Cyl. Brush 46 Grit 28"
39	56412071	1	Compression Spring				
40	56412088	1	Pin	**	56407473	2	Brush, Soft Nylon 32"
41	56412176	2	Bushing	**	56407474	2	Brush, Hard Nylon 32"
42	56412262	1	Housing, Spring TSBUS2002-811	**	56407476	2	Brush, 180 Grit 32"
43	56420018	1	Compression Spring	**	56407477	2	Brush, 80 Grit 32"
44	56420019	1	Nut Retainer	**	56407478	2	Brush, 46 Grit 32"
45	56420020	1	Nut Retainer				

* = Not Shown

** = Not Included (Optional)

NOTE #1: All quantities are for one assembly, there are two of these assemblies on the machine.

NOTE #2: All quantities are for one assembly, there are two of these assemblies on the machine.



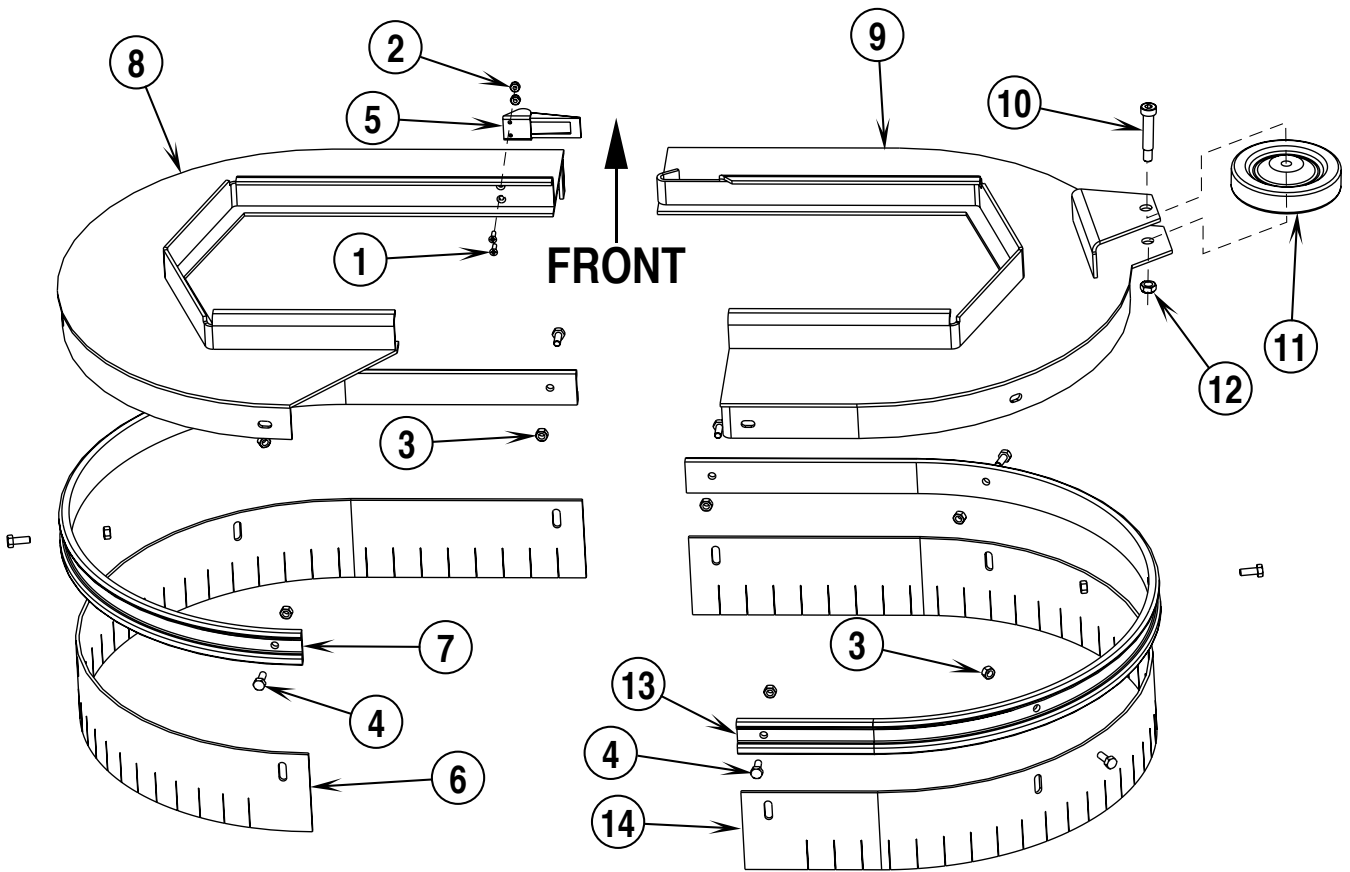
02-2	SCRUB SYSTEM-DISK	BOOK E		
04-8	I-MAX™ 28C, 32C / CMAX™ 34ST / BA 750C	E	11.9.1	17

Item	Ref. No.	Qty	Description	Item	Ref. No.	Qty	Description
1	56001873	1	Scr, Hex Hd 3/8-16 x 2.50	31	56396080	1	Lug, Counter-Clockwise (#40-47)
2	56001879	16	Wsh, Flt SAE 1/2	32	56396081	1	Lug, Clockwise (#40-47)
3	56002684	1	Scr, Hex Hd 3/8-16 x 1.75	33	56396196	8	Bushing
4	56002841	2	Nut, Hex Nyl Loc-Thin 3/8-16	34	56396268	1	Spring Housing Guide
5	56002938	6	Wsh, Flt SAE SS 5/16	35	56314031	2	Hub, Drive
6	56002947	8	Scr, Hex Hd Loc 3/8-16 x 1.00	36	56397112	2	Shroud, Motor
7	56003244	2	Key, Sq .25 x .94	37	56397300	1	Tee, Barb
8	56003312	8	Nut, Hex Nyl Loc M12-1.75	38	56397301	2	Hose, PVC
9	56003335	2	Scr, Hex Loc SS 5/16-18 x .88	39	56635645	2	Motor, 36VDC, 75HP
10	56003477	6	Scr, Hex Loc SS M8-1.00 x 25mm	*	56397090	1	Bearing B.E.
11	56009019	2	Scr, Hex Thd Form 1/4-20 x .38	*	56397135	1	Bearing F.E.
12	56009062	4	Scr, Pan Phil Thd Form 1/4-20 x .50	*	56397048	1	Brush Board Assy, W/Springs & Brushes
13	56009107	2	Wsh, Flt SS .378 x 1.00 x .120	*	56397138	4	Brush Spring
14	56009242	2	Wsh, Flt .406 x 1.50 x .125	*	56039276	4	Brush Assy
15	56355488	2	Clamp, Hose SAE #96				Lug Assemblies - NOTE #1
16	56370878	8	Bearing, Sleeve	40	56002938	3	Wsh, Flt SAE SS 5/16
17	56393303	1	Actuator, Motor TSBUS2004-870	41	56003405	3	Nut, Hex Nyl Loc SS M8-1.25
*	56393790	2	Limit Switch	42	56003436	3	Scr, Hex Hd SS M8-1.25 x 25mm
*	56470433	1	Carbon Brush Kit	43	56009030	1	Scr, Pan Phil Thd Form 10-24 x .38
*	56388520	1	Plastic Nut	44	56009096	1	Wsh, Flt .193 x .875 x .060
18	56412071	1	Compression Spring	45	56407053	2	Thermoid Disk
19	56412262	1	Housing, Spring TSBUS2002-811	46	56397081	1	Spring Retainer
20	56420018	1	Compression Spring	47	56314030	1	Brush Holder
21	56420019	1	Nut Retainer	48	56328064	2	Clamp, P
22	56420020	1	Nut Retainer	49	56003001	2	Scr, Pan Phil SS 8-32 x .62
23	56478246	6	Tie, Cable	50	56002808	2	Nut, Hex Nyl Loc 8-32
24	56003120	2	Pin, Cotter Hair .0915 x .375	51	56373686	2	Spring, Compression
25	56003637	8	Scr, Hex M12-1.75 x 40mm				(insert springs into hose item #28)
26	56035078	1	Weld't, Brush Head				
27	56056474	1	Shaft, Steel	**	56505780	2	Pad Holder
28	56172099	1	Hose, PVC Clear	**	56505781	2	MagnaGrit Brush
29	56396045	4	Arm	**	56505782	2	DynaGrit Brush
30	56396066	1	Yoke, Actuator	**	56505783	2	AgLite Grit Brush
				**	56505784	2	Prolene Brush
				**	56505785	2	ProLite Brush
				**	56505786	2	Union Mix Brush
				**	56505787	2	MidGrit Brush
				**	56505788	2	MidLite Brush
				**	56182058	2	Lock Collar, Snap
				**	56393567	2	Lock Collar, Thrd

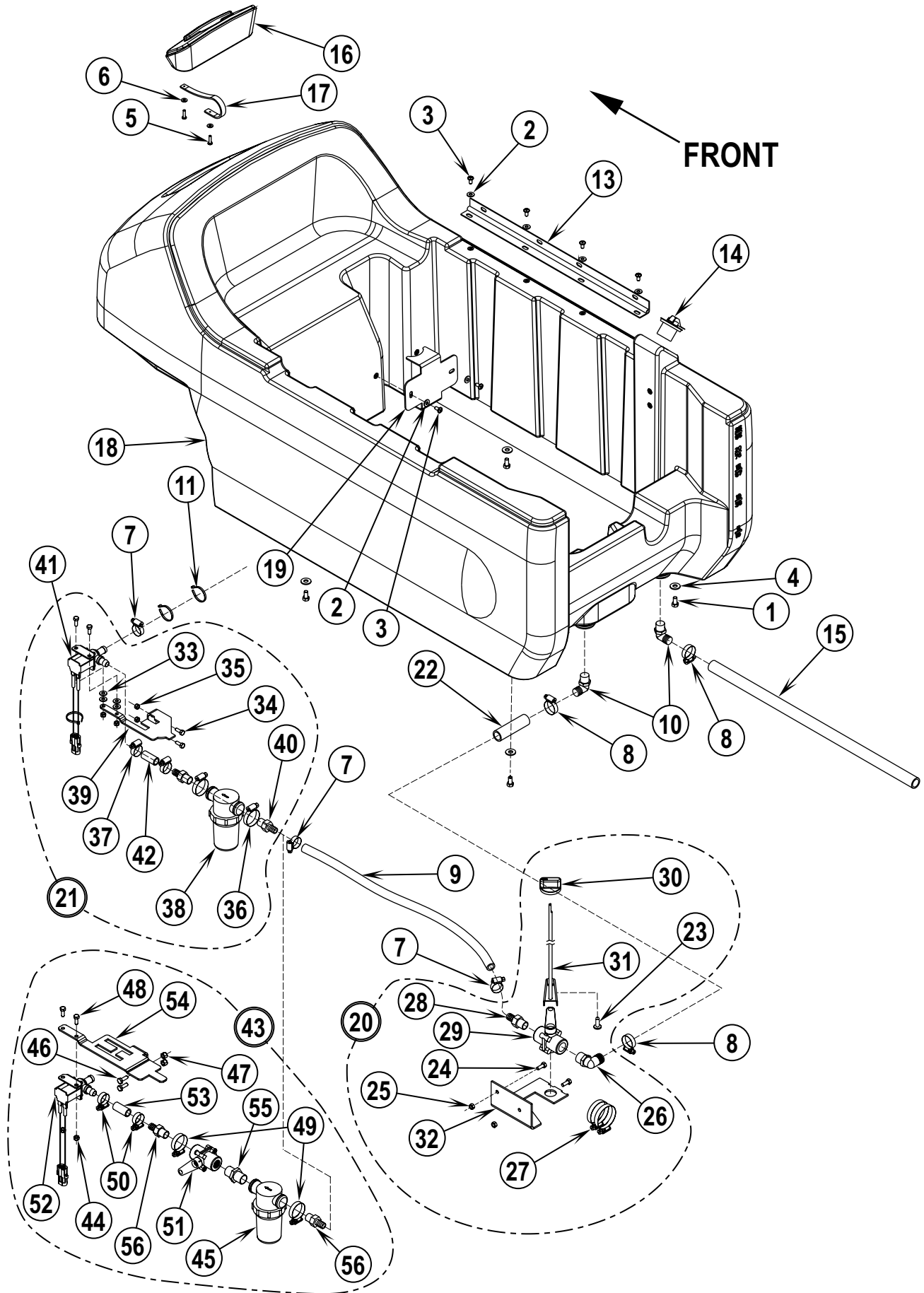
* = Not Shown

** = Not Included (optional)

NOTE #1: All quantities are for one assembly, there are two lug assemblies on the machine.



Item	Ref. No.	Qty	Description
	56397510	1	Assembly, Brush Guard Left (#1-8)
	56397511	1	Assembly, Brush Guard Right (#3, 4, 9-14)
1	56002816	2	Scr, Flt Phil 6-32 x .50
2	56002907	2	Nut, Hex Nyl Loc SS 6-32
3	56003426	9	Nut, Hex Nyl Loc SS M6-1.00
4	56003431	9	Scr, Hex Hd SS M6-1.00 x 16mm
5	56471194	1	Latch Assembly
6	56397019	1	Blade, Left
7	56397055	1	Channel, Left
8	56397531	1	Weld't, Brush Cover Left
9	56397536	1	Weld't, Brush Cover Right
10	56002625	1	Scr, Soc Shd .38 x 1.50 x 5/16-18
11	56228102	1	Wheel
12	56002826	1	Nut, Hex Nyl Loc-Thin 5/16-18
13	56397044	1	Channel, Right
14	56397014	1	Blade, Right

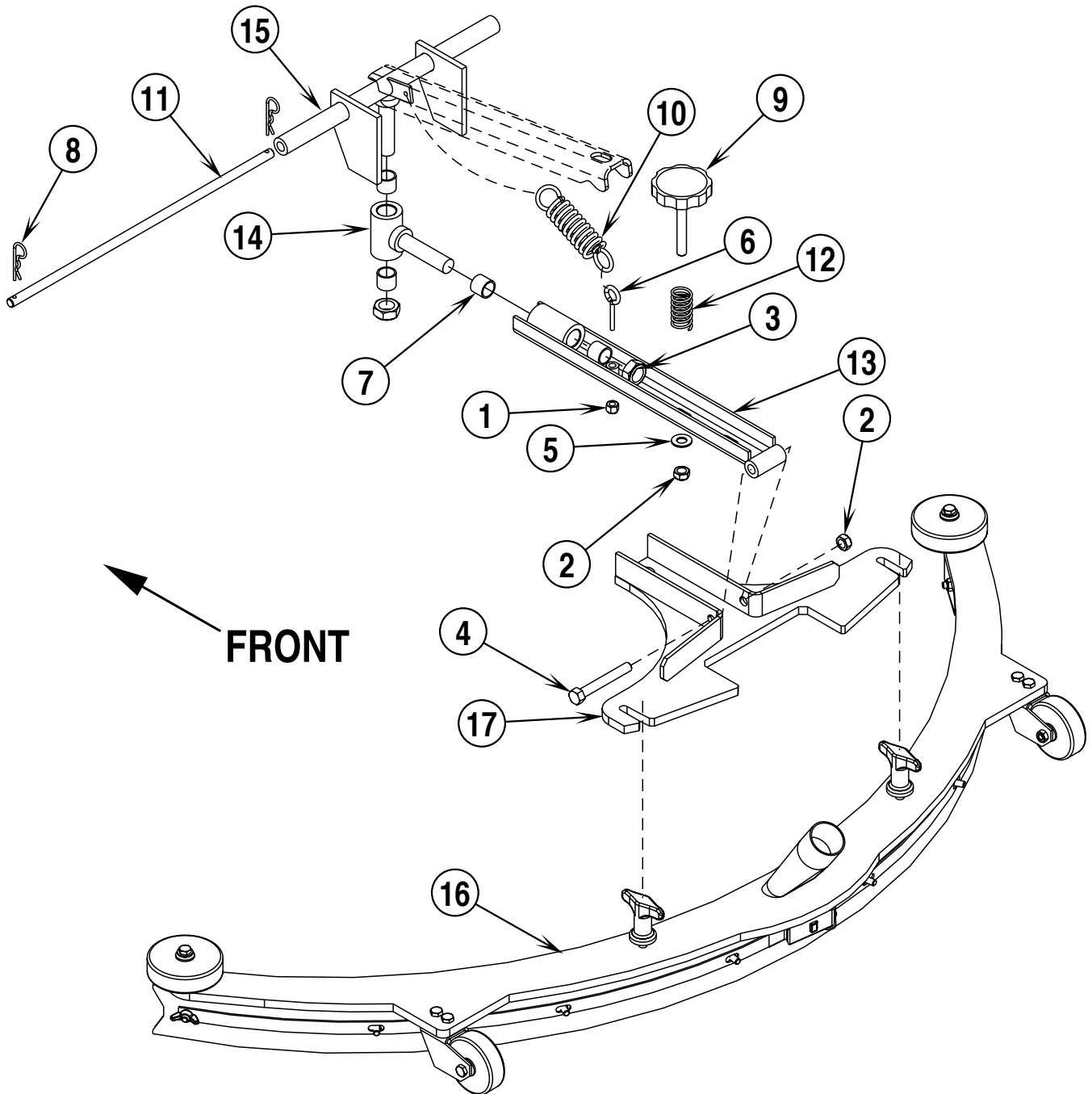


02-2	SOLUTION SYSTEM	BOOK E		
04-3	I-MAX™ 28C, 32C / CMAX™ 34ST / BA 750C	E	11.9.1	21

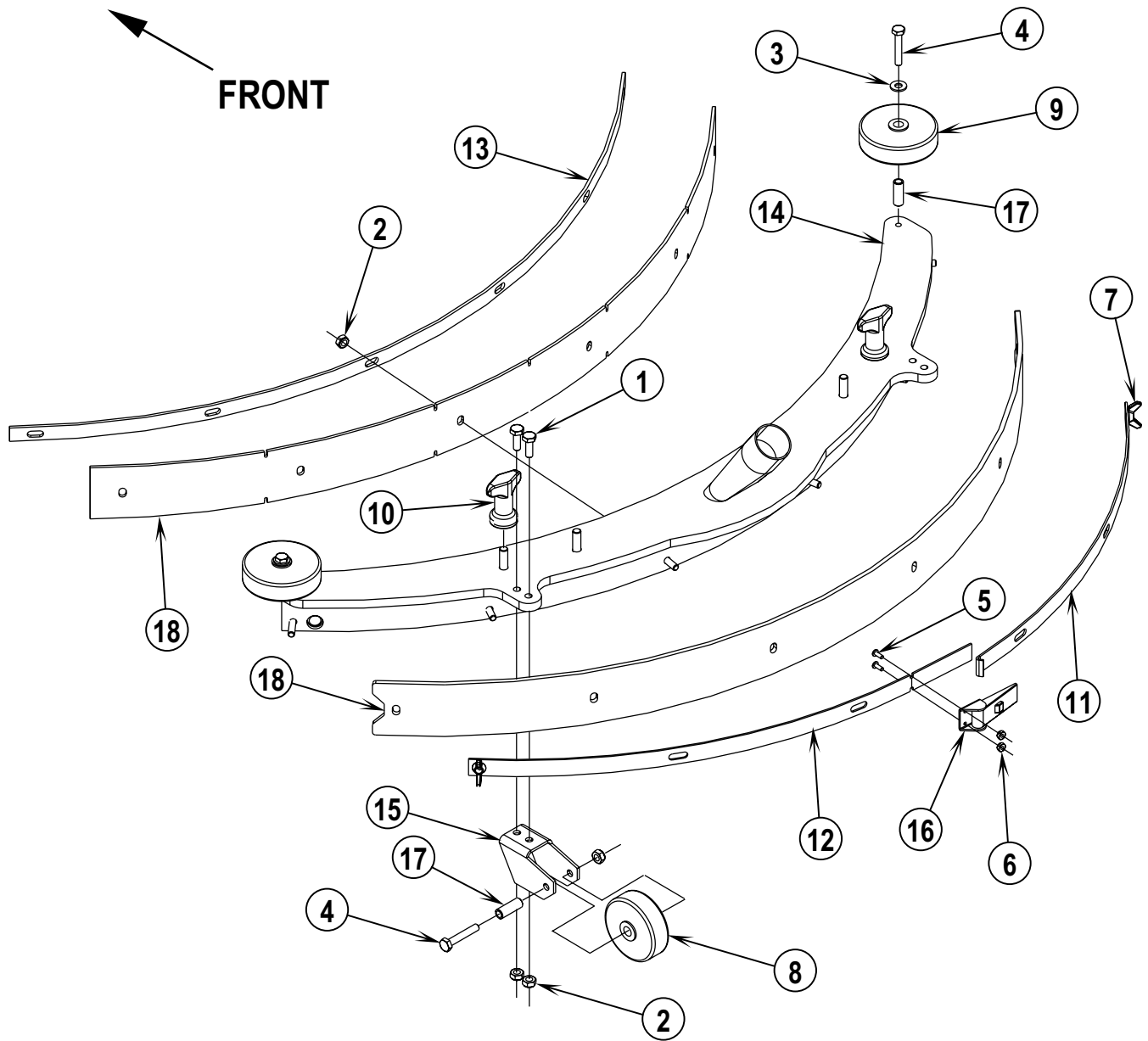
Item	Ref. No.	Qty	Description	Item	Ref. No.	Qty	Description
1	56002035	4	Scr, Hex Hd 5/16-18 x .62	43	56397496	1	Assembly, Filter (#44-56) NOTE 2
2	56002098	6	Wsh, Flt SAE 1/4	44	56003403	2	Nut, Hex Nyl Loc M6-1.00
3	56002145	6	Scr, Pan Phil 1/4-20 x .50	45	56412173	1	Solution Filter
4	56002220	4	Wsh, Flt STD 5/16	46	56002155	2	Scr, Hex Hd 1/4-20 x .75
5	56009005	2	Scr, Pan Phil SS Type B 10-16 x .75	47	56002708	2	Nut, Hex Nyl Loc 1/4-20
6	56009205	2	Wsh, Flt SS #10	48	56003174	2	Scr Hex Thd To Hd M6-1.0 x 16mm
7	56219932	3	Clamp, Hose SAE #6	49	56131601	2	Clamp, Hose SAE #16
8	56244969	3	Clamp, Hose SAE #12	50	56219932	2	Clamp, Hose SAE #6
9	56324249	1	Hose, Spiral .50 NOTE 1	51	56396508	1	Valve, Solution
	56172099	1	Hose, Clear .500 x 18" NOTE 2	52	56397215	1	Solenoid Valve Assy. 36V
10	56456802	2	Barb, 90 Elbow 11/16 x 3/4NPT	53	56397217	1	Hose, PVC Clear
11	56478246	3	Tie, Cable	54	56397495	1	Bracket, Filter
12	56051836	1	Hook (Not Shown)	55	56412182	1	Nipple, Hex 3/4-14
13	56056291	1	Hinge	56	56412184	2	Barb, Adapter 1/2 x 1/2 NPT
14	56057852	1	Plug, Expansion				
15	56261265	1	Hose, .75 Clear PVC, 25.00				
16	56397021	1	Lid, Solution				
17	56397167	1	Strap, Retaining				
18	56397220	1	Tank, Solution				
19	56397287	1	Bracket				
20	56397524	1	Water Valve Assy (#23-32)				
21	56397533	1	Assy, Filter 36V (#33-42) TSBUS2003-835 NOTE 1				
	56397214	1	Assy, Filter 36V (#33-42) TSBUS2003-835 NOTE 1				
22	56397540	1	Hose, .75				
			Water Valve Assembly				
23	56003119	1	Scr, Pan Phil SS 1/4-20 x .50				
24	56003174	2	Scr, Hex Thd To Hd M6-1.00 x 16mm				
25	56003403	2	Nut, Hex Nyl Loc M6-1.00				
26	56244985	1	Barb, 90 Elbow 3/4 x 1/2NPT				
27	56329145	2	Clamp, Hose SAE #24				
28	56412184	1	Barb, Adapter 1/2 x 1/2NPT				
29	56057830	1	Valve, Ball				
30	56396201	1	Knob				
31	56396310	1	Flow Valve Weld't.				
32	56397526	1	Bracket, Valve				
			Filter Assembly				
33	56002098	4	Wsh, Flt SAE 1/4				
34	56003174	4	Scr, Hex Thd To Hd M6-1.00 x 16mm				
35	56003403	4	Nut, Hex Nyl Loc M6-1.00				
36	56131601	2	Clamp, Hose SAE #16				
37	56219932	2	Clamp, Hose SAE #6				
38	56260905	1	Strainer TSBUS2003-835				
	56412173	1	Solution Filter TSBUS2003-835				
39	56396068	1	Filter Bracket				
40	56397145	2	Barb, Hose Female TSBUS2003-835				
	56412184	2	Barb, Adapter 1/2 x 1/2NPT TSBUS2003-835				
41	56397215	1	Solenoid Valve Assy, 36V				
42	56396330	1	Hose, PVC Clear TSBUS2003-835				
	56397217	1	Hose, PVC Clear TSBUS2003-835				

NOTE 1: Used on all cylindrical models and CMAX 34ST before SN 1735134.

NOTE 2: Only used on CMAX 34ST after SN 1735133.



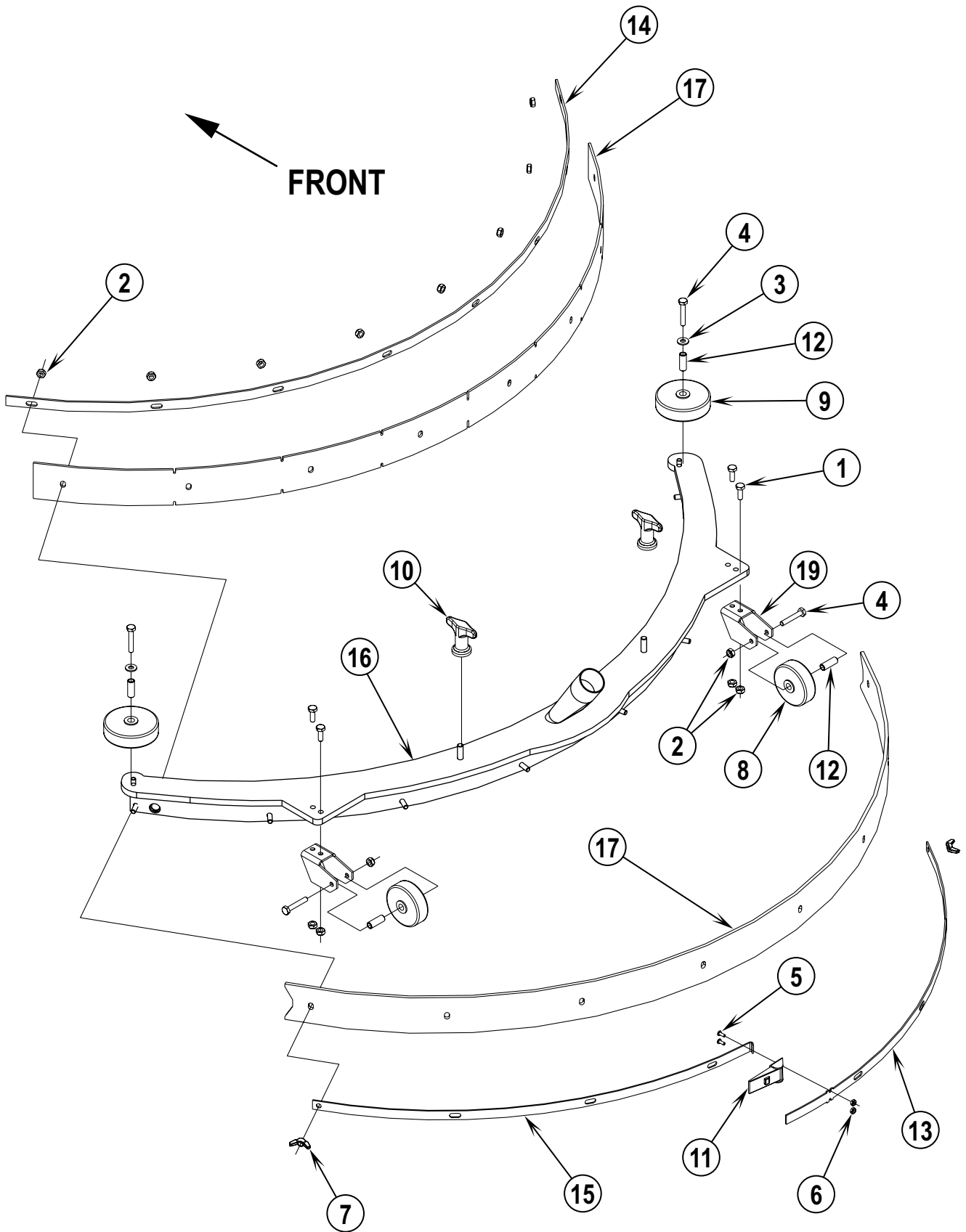
Item	Ref. No.	Qty	Description
1	56002708	1	Nut, Hex Nyl Loc 1/4-20
2	56002852	2	Nut, Hex Nyl Loc-Thin SS 3/8-16
3	56002855	2	Nut, Hex Nyl Loc-Thin SS 5/8-11
4	56002903	1	Scr, Hex Hd SS 3/8-16 x 2.75
5	56002910	1	Wsh, Flt SAE SS 3/8
6	56009220	1	Bolt, Eye 1/4-20 x 1.38
7	56367389	4	Bearing, Sleeve
8	56003120	2	Pin, Cotter Hair .0915 x .375
9	56035163	1	Adjustment Knob Assy
10	56051136	1	Spring, Ext.
11	56056371	1	Shaft .375 x 14.62
12	56056585	1	Compression Spring
13	56396076	1	Squeegee Bar Weld't.
14	56396085	1	Squeegee Pivot Weld't.
15	56397093	1	Squeegee Lift Weld't.
16	56391281	1	Squeegee Assy (BA 750C)
	56396132	1	Squeegee Assy (I-MAX 28C)
	56397227	1	Squeegee Assy (I-MAX 32C)
	56397349	1	Squeegee Assy (CMAX 34ST)
17	56397356	1	Mounting Plate Weld't.



02-2	SQUEEGEE ASSEMBLY-I-MAX 28C / BA 750C	BOOK E		
04-3	I-MAX™ 28C, 32C / CMAX™ 34ST / BA 750C	E	11.9.1	25

Item	Ref. No.	Qty	Description
	56391281	1	Squeegee Assy (BA 750C)
	56396132	1	Squeegee Assy (I-MAX 28C)
1	56002807	4	Scr, Hex Hd SS 1/4-20 x .75
2	56002850	12	Nut, Hex Nyl Loc-Thin SS 1/4-20
3	56002859	2	Wsh, Flt SAE SS 1/4
4	56002901	4	Scr, Hex Hd SS 1/4-20 x 1.50
5	56002909	2	Scr, Pan Phil SS 6-32 x .38
6	56002964	2	Nut, Hex Nyl Loc-Thin SS 6-32
7	56009048	2	Nut, Wing Loc 1/4-20
8	56324350	2	Wheel
9	56324499	2	Wheel 3.00
10	56370711	2	Nut, Thumb
11	56391286	1	Strap, Rear Right
12	56391288	1	Strap, Rear Left
13	56391290	1	Strap, Front
14	56391292	1	Tool Weldment
15	56409656	2	Bracket, Wheel
16	56471194	1	Latch
17	56471220	4	Bushing, .25 x .37 x 1.00
18	56391340	1	Blade Kit (BA 750C)
	56396172	1	Blade Kit (I-MAX 28C)
**	56391340	1	Blade Kit (Gum Rubber)
**	56391342	1	Oil Resistant Blade Kit (Neoprene)
**	56396172	1	Blade Kit (Linatex)
**	56397325	1	Blade, Front-Tile Gum
**	56397326	1	Blade, Front-Tile Linatex

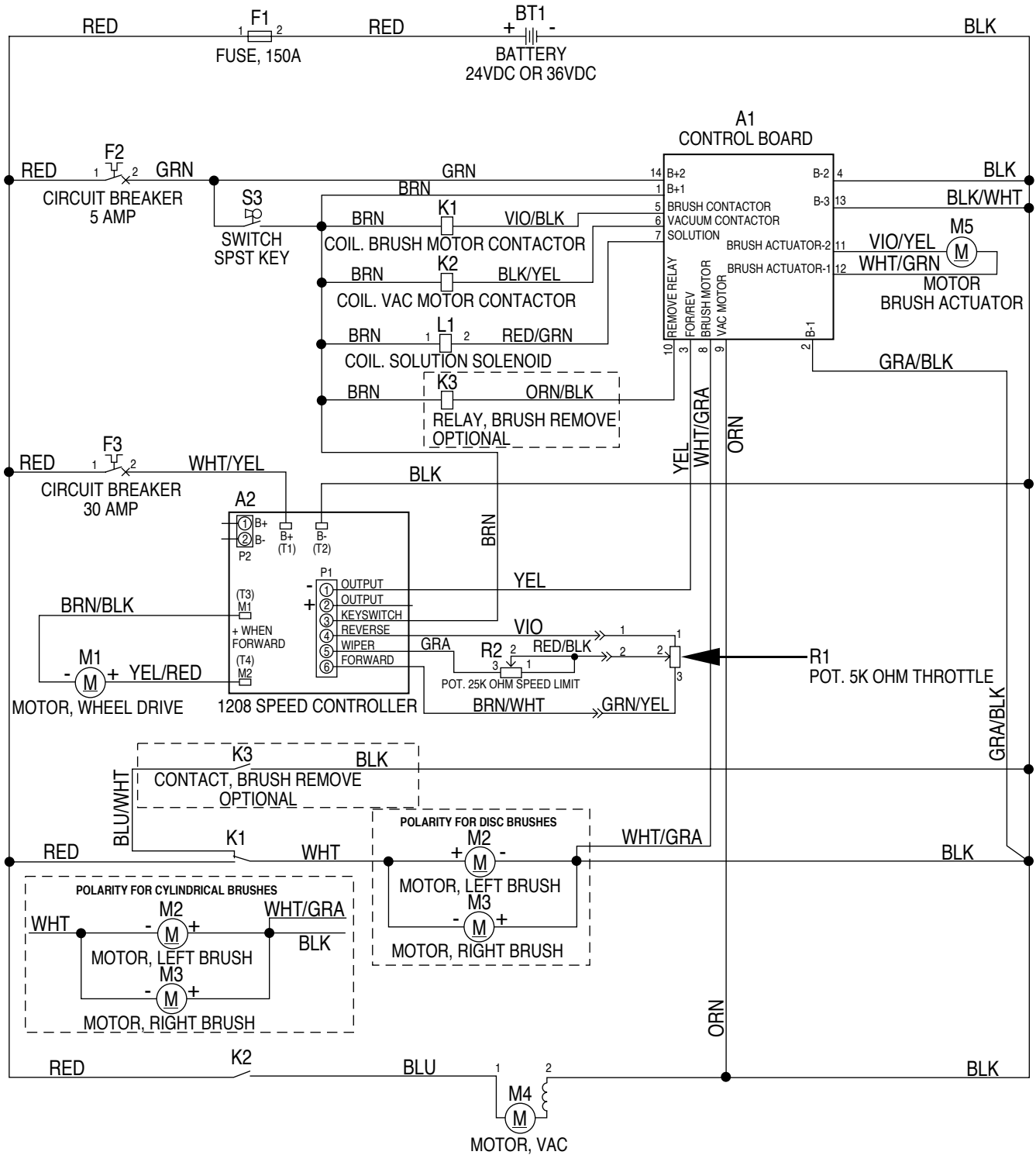
** = Optional



02-2	SQUEEGEE ASSEMBLY-I-MAX 32C / CMAX 34ST	BOOK E		
04-3	I-MAX™ 28C, 32C / CMAX™ 34ST / BA 750C	E	11.9.1	27

Item	Ref. No.	Qty	Description
	56397227	1	Squeegee Assy (I-MAX 32C)
	56397349	1	Squeegee Assy (CMAX 34ST)
1	56002807	4	Scr, Hex Hd SS 1/4-20 x .75
2	56002850	14	Nut, Hex Nyl Loc-Thin SS 1/4-20
3	56002859	2	Wsh, Flt SAE SS 1/4
4	56002901	4	Scr, Hex Hd SS 1/4-20 x 1.50
5	56002909	2	Scr, Pan Phil SS 6-32 x .38
6	56002964	2	Nut, Hex Nyl Loc-Thin SS 6-32
7	56009048	2	Nut, Wing Loc 1/4-20
8	56324350	2	Wheel
9	56324499	2	Wheel 3.00
10	56370711	2	Nut, Thumb
11	56471194	1	Latch Assembly
12	56471220	4	Bushing .25 x .37 x 1.0
13	56397353	1	Strap, Rear
14	56397354	1	Strap, Front
15	56397355	1	Strap, Rear
16	56397359	1	Squeegee Tool Weldment
17	56397094	1	Blade Kit (CMAX 34ST)
	56397106	1	Blade Kit (I-MAX 32C)
18			Intentionally Omitted
19	56409656	2	Bracket, Wheel
**	56397094	1	Blade Kit (Gum Rubber)
**	56397106	1	Blade Kit (Linatex)
**	56397595	1	Blade Kit (Oil Resistant)
**	56397147	1	Blade, Front-Tile Gum
**	56397148	1	Blade, Front-Tile Linatex

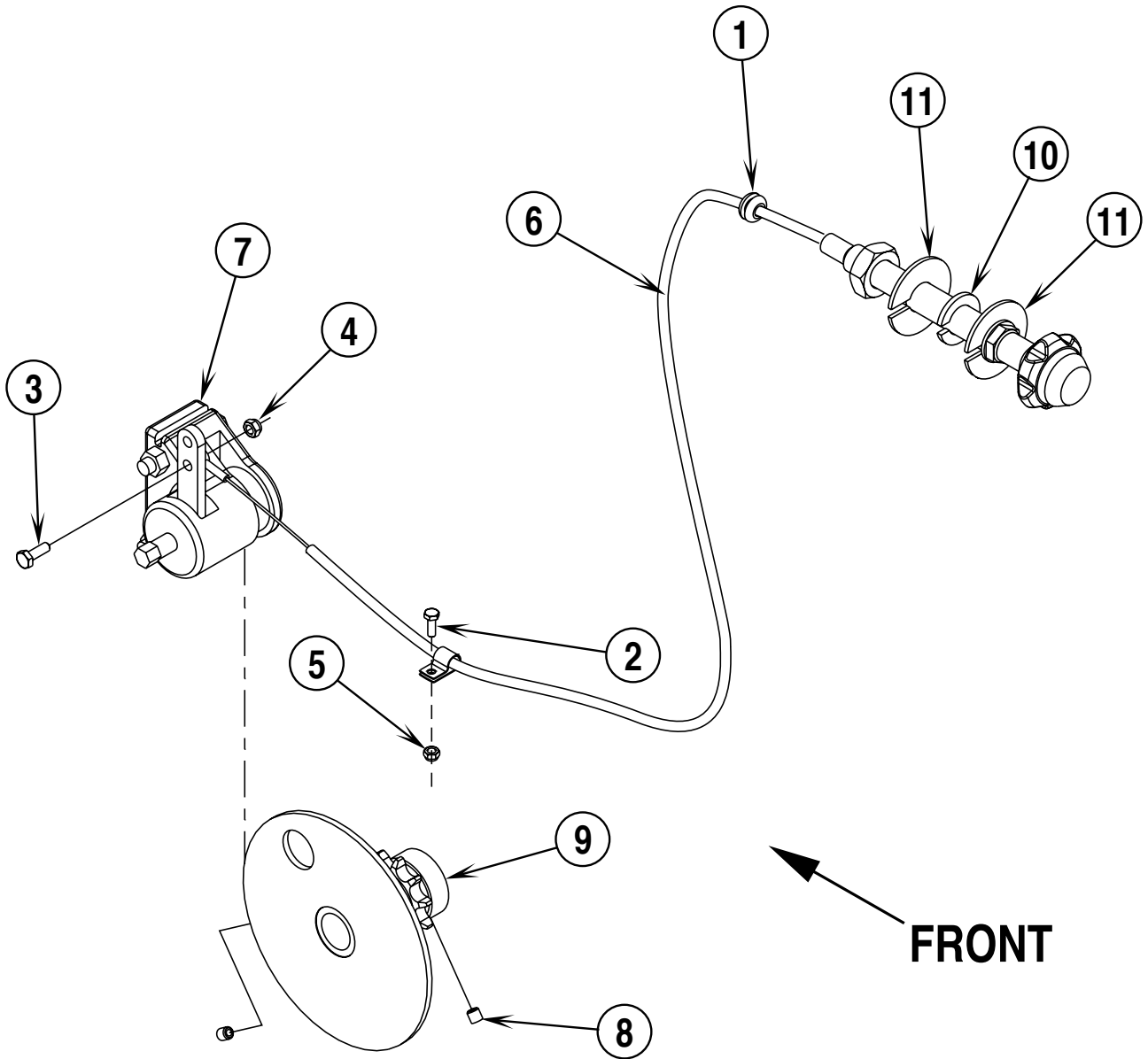
** = Optional



02-2	WIRING DIAGRAM	BOOK E		
04-8	I-MAX™ 28C, 32C / CMAX™ 34ST / BA 750C	E	11.9.1	29

Item	Ref. No.	Qty	Description
A1	56397516	1	Control PCB Assy TSBUS2004-870
A2	56393721	1	Control, DC Curtis
BT1	N/A	A/R	Batteries
F1	56412089	1	Fuse, 150A
F2	56387328	1	Circuit Breaker, 5A (Controls)
F3	56026198	1	Circuit Breaker, 30A (Wheel Drive)
K1	56395450	1	Contactor (Brush Motor)
	56397250	1	Contactor (Replaces K1 for Brush Remove Option)
K2	56395450	1	Contactor (Vac Motor)
K3	56396280	1	Relay (Brush Remove/Optional)
L1	56397215	1	Solution Solenoid Valve Assy
M1	56212175	1	Motor, 36VDC 1/2HP (Wheel Drive)
*	56026857	4	Carbon Brush
M2	56407431	2	Motor, 36VDC, .75HP (Left Brush / Cylindrical)
	56417489	1	Armature
	56407490	1	Bearing (2 required per motor)
	56407492	1	Brush Cap Assembly
	56407493	4	Brush Assembly
	56407494	4	Brush Cover Cap
	56635645	2	Motor, 36VDC, 75HP (Left Brush / Disk)
*	56397090	1	Bearing B.E.
*	56397135	1	Bearing F.E.
*	56397048	1	Brush Board Assy, W/Springs & Brushes
*	56397138	4	Brush Spring
*	56039276	4	Brush Assy
M3	56407431	2	Motor, 36VDC, .75HP (Right Brush / Cylindrical)
	56417489	1	Armature
	56407490	1	Bearing (2 required per motor)
	56407492	1	Brush Cap Assembly
	56407493	4	Brush Assembly
	56407494	4	Brush Cover Cap
	56635645	2	Motor, 36VDC, 75HP (Right Brush / Disk)
*	56397090	1	Bearing B.E.
*	56397135	1	Bearing F.E.
*	56397048	1	Brush Board Assy, W/Springs & Brushes
*	56397138	4	Brush Spring
*	56039276	4	Brush Assy
M4	56397228	1	Motor, Vac 36VDC
*	56212223	1	Carbon Brush Set
M5	56393303	1	Actuator, Motor (Brush Lift) TSBUS2004-870
*	56393790	2	Limit Switch
*	56470433	1	Carbon Brush Kit
*	56388520	1	Plastic Nut
R1	56397029	1	Potentiometer, 5K (Throttle)
R2	56397123	1	Potentiometer, 25K (Speed Limit)
S3	56396305	1	Switch, SPST Toggle (Main Power)
*	56396283	1	Harness, Main TSBUS2004-870
*	56396299	1	Harness, Handle
*	56456460	4	Cable Assy 4 x 12 (Battery Interconnect)
*	56416445	1	Cable Assy 4 AWG (Battery Interconnect)
*	56396304	1	Cable Assy 6 AWG
*	56398000	1	Connector Assy TSBUS2003-841 (Connects to Batteries)
*	56397509	1	Connector Assy (Connects to Machine)

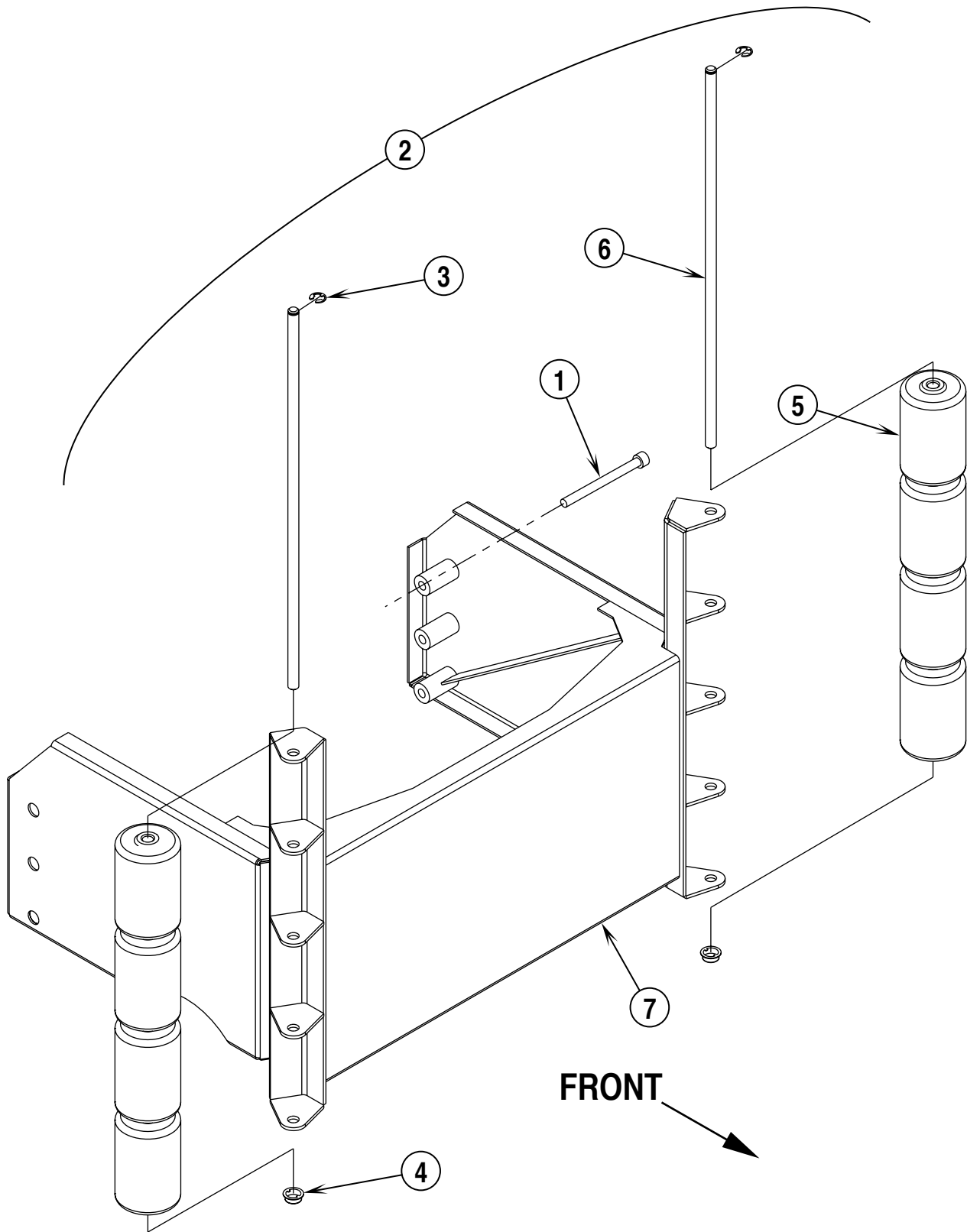
* = Not Shown



02-2	PARKING BRAKE KIT	BOOK E		
02-4	I-MAX™ 28C, 32C / CMAX™ 34ST / BA 750C	E	11.9.1	31

Item	Ref. No.	Qty	Description
	56396302	1	Kit, Parking Brake
1	56321559	1	Grommet
2	56002503	1	Scr, Hex Hd 10-24 x .50
3	56003358	1	Scr, Hex M6-1.00 x 25mm
4	56003403	1	Nut, Hex Nyl Loc M6-1.00
5	56002768	1	Nut, Hex Nyl Loc 10-24
6	56056323	1	Cable, Brake Assembly
7	56056245	1	Brake, Mechanical Caliper
8	56001841	2	Scr, Soc Set Loc 1/4-20 x .25
9	56396326	1	Sprocket Weldment
10	56396329	1	Plate, Brake Align
11	56396328	2	Plate, Brake Mount
*	56040763	1	Instruction Sheet

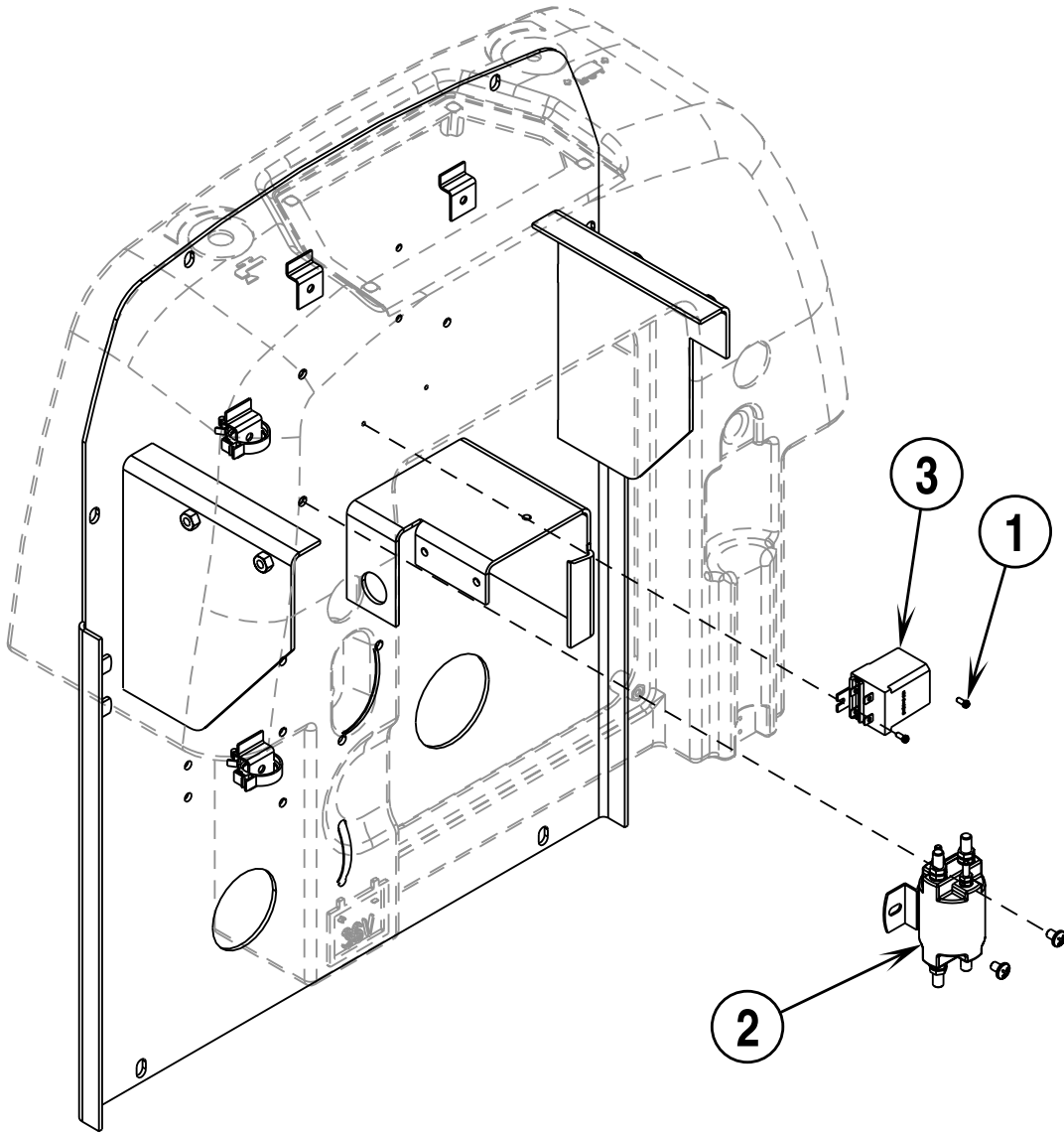
* = Not Shown



02-2	INDUSTRIAL BUMPER KIT - CYLINDRICAL	BOOK E		
02-4	I-MAX™ 28C, 32C / CMAX™ 34ST / BA 750C	E	11.9.1	33

Item	Ref. No.	Qty	Description
	56396308	1	Kit, Industrial Bumper
1	56002134	6	Scr, Soc Hd 3/8-16 x 2.25
2	56397435	1	Assembly, Industrial Bumper (#3-7)
3	56003264	2	Ring, Ret Ext Type E .50 Dia
4	56009097	2	Nut, Push Cap 1/2
5	56392102	8	Roller
6	56392809	2	Rod
7	56397436	1	Industrial Bumper Weldment
*	56040765	1	Instruction Sheet

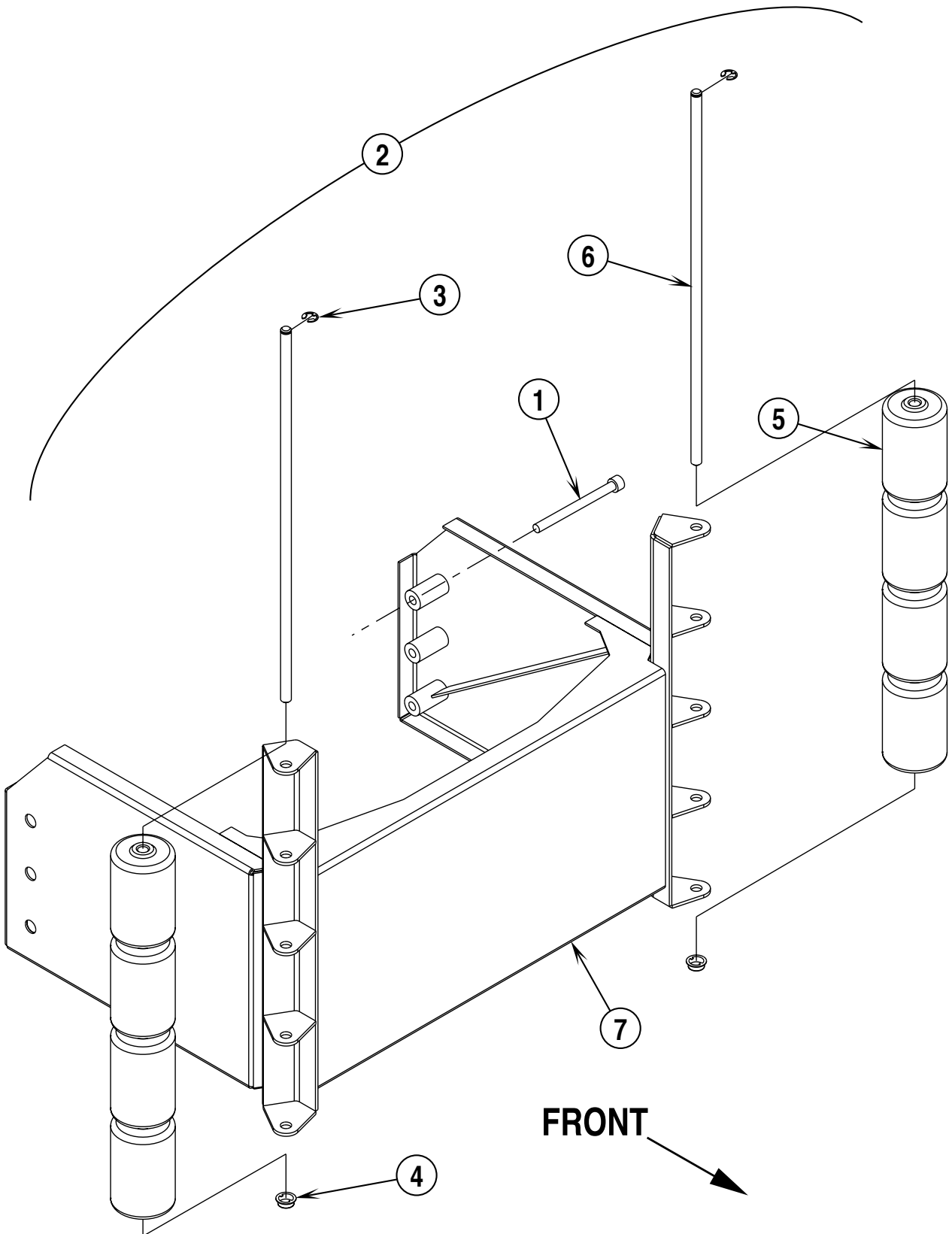
* = Not Shown



02-2	BRUSH CLICK-OFF KIT	BOOK E		
02-4	I-MAX™ 28C, 32C / CMAX™ 34ST / BA 750C	E	11.9.1	35

Item	Ref. No.	Qty	Description
	56396318	1	Kit, Brush Click-Off
1	56002539	2	Scr, Pan Phil Thd Form 6-32 x .31
2	56397250	1	Solenoid, 36V SPDT
3	56396280	1	Relay, 36V SPST
*	56040766	1	Instruction Sheet

* = Not Shown



02-2	INDUSTRIAL BUMPER KIT - CMAX™ 34ST	BOOK E		
02-4	I-MAX™ 28C, 32C / CMAX™ 34ST / BA 750C	E	11.9.1	37

Item	Ref. No.	Qty	Description
	56396322	1	Kit, Industrial Bumper
1	56002134	6	Scr, Soc Hd 3/8-16 x 2.25
2	56397239	1	Assembly, Industrial Bumper (#3-7)
3	56003264	2	Ring, Ret Ext Type E .50 Dia
4	56009097	2	Nut, Push Cap 1/2
5	56392102	8	Roller
6	56392809	2	Rod
7	56397245	1	Industrial Bumper Weldment
*	56040767	1	Instruction Sheet

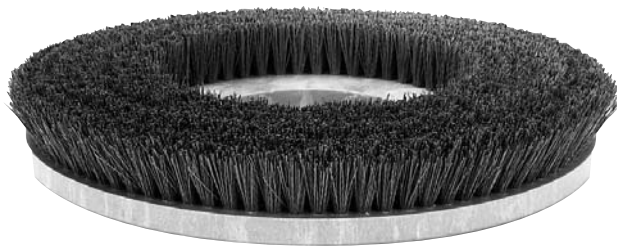
* = Not Shown

We manufacture brushes and pad holders that will give you the best possible performance between machine and floor. Following are descriptions of the materials and their applications.

- Union Mix:** Medium grade natural fibers for polishing finished floors with standard-speed equipment. Recommended for use in place of white pads.
- ProLite:** Bristles are made from light-duty polypropylene for general scrubbing when you do not want to scratch or remove finish from the floor. Recommended for use in place of red pads.
- Prolene:** Polypropylene material for medium-duty scrubbing on concrete, terrazzo and vinyl floor tile. Recommended for use in place of green or blue pads.
- Magna Grit:** For extreme heavy-duty scrubbing or stripping of floors. This brush has extra large diameter silicon carbide grit impregnated synthetic bristles. Recommended for use in place of black pads.
- Dyna Grit:** For aggressive, heavy-duty scrubbing or stripping of floors. Recommended for use in place of brown pads.
- MidLite Grit:** For general purpose scrubbing of sealed or unsealed concrete, stone, terrazzo, quarry tile and other resilient hard floor surfaces. Recommended for use in place of green or blue pads.
- MidGrit:** For general purpose scrubbing when you need a lighter action for sealed or unsealed concrete, stone, terrazzo, quarry tile and other resilient hard floor surfaces. Recommended for use in place of green or blue pads.
- AgLite Grit:** For light scrubbing when used wet; buffing or polishing when used dry on urethane coated, sealed concrete or other resilient hard surface floors. Recommended for use in place of red or white pads.
- Short Trim Pad Holder:** Made with a structural foam block and center ring for correct pad centering. It has a "shower feed" design for getting solution to the floor.

Ref. No.: CMAX 34ST BRUSHES

- 56505780 - Pad Holder
- 56505781 - Magna Grit
- 56505782 - Dyna Grit
- 56505783 - AgLite Grit
- 56505784 - Prolene
- 56505785 - ProLite
- 56505786 - Union Mix
- 56505787 - Mid Grit
- 56505788 - MidLite Grit



We manufacture brushes and pad holders that will give you the best possible performance between machine and floor. Following are descriptions of the materials and their applications.

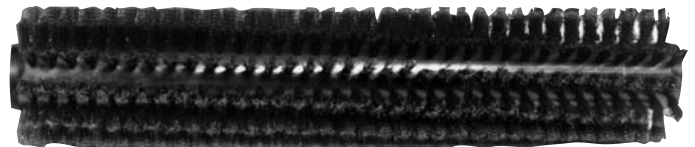
- 46 Grit Brush:** Most aggressive grit brush. Used primarily to clean heavy buildup on concrete floors in factories, or for heavy stripping of finish.
- 80 Grit Brush:** Medium aggressive grit brush. Good all-around brush for medium to heavy buildup removal. Can also be used for general stripping operations.
- 180 Grit Brush:** Least aggressive grit brush. Used for daily cleaning of hard-finished floors.
- Polypropylene Brush:** Standard equipment brush. Low cost, yet effective in cleaning many common floor surfaces.
- Stiff Nylon Brush:** Cleaning action similar to polypropylene. More durable and wear-resistant than polypropylene.
- Soft Nylon Brush:** Least aggressive brush available. Used on soft-finish floors where a more aggressive brush would leave scratch marks, or in applications requiring very light cleaning.

Ref. No.: 28" BRUSHES

- 56412046 - Polypropylene
- 56412191 - Soft Nylon
- 56412192 - Hard Nylon
- 56412193 - 180 Grit
- 56412194 - 80 Grit
- 56412195 - 46 Grit

Ref. No.: 32" BRUSHES

- 56407473 - Soft Nylon
- 56407474 - Hard Nylon
- 56407475 - Polypropylene
- 56407476 - 180 Grit
- 56407477 - 80 Grit
- 56407478 - 46 Grit



Austria (Sales Sub)

Nilfisk-Advance GmbH	Phone: +43
Voralberger Allee 46	1616 58 30 22
A-1230 Wien	Fax: +43
info@nilfisk-advance.at	1616 58 30 40
www.nilfisk-advance.at	

Belgium (Sales Sub)

Nilfisk-Advance NV/SA	Phone: +32
Doornveld Sphere Business Park	(0)2467 60 50
Industrie Asse 3, No. 11	Fax: +32
B-1731 Zellik-Asse	(0)2463 44 16
www.nilfisk-advance.be	

Czech Republic (Sales Sub)

Nilfisk-Advance s.r.o.	Phone: +420
Lysinská 44/1863	2 44 09 09 12
143 00 Praha - Modrany	+420
Czech Republic	2 44 09 09 21 4
	Fax: +420
	2 44 40 23 93

Denmark

Nilfisk-Advance A/S	Phone: +45
Sognevej 25	43 23 81 00
DK-2605 Brøndby	Fax: +45
mail@nilfisk-advance.dk	43 43 77 00
www.nilfisk-advance.com	

Denmark (Prod. Sub)

Gerni A/S	Phone: +45
Myntevej 2	89 12 22 00
DK-8900 Randers	Fax: +45
www.gerni.com	86 43 14 81

Denmark (Sales Sub)

Nilfisk-Advance Nordic A/S	Phone: +45
Sognevej 25A	43 23 40 50
Postbox 344	Fax: +45
DK-2605 Brøndby	43 23 40 60
kundeservice@nilfisk-advance.dk	
www.nilfisk-advance.dk	

France (Sales Sub)

Nilfisk-Advance S.A.	Phone: +33
27 avenue de la Baltique	1695 98 700
Villebon sur Yvette	Fax: +33
P.B. 246	1695 98 701
F-91944 Courtaboeuf Cedex	
info@nilfisk-advance.fr	
www.nilfisk-advance.fr	

Germany (Sales Sub)

Nilfisk-Advance AG	Phone: +49
Siemensstrasse 25-27	4101 3990
Postfach 1361	Fax: +49
D-25462 Rellingen	4101 39 91 91
info@nilfisk-advance.de	
www.nilfisk-advance.de	

Greece (Sales Sub)

Nilfisk-Advance A.E.	Tel.: +30
8, Thoukididou Str.	210 963 3443
Argioupoli	Fax: +30
Gr - 164 52 Athens	210 965 0975
Greece	

Holland (Sales Sub)

Nilfisk-Advance B.V.	Phone: +31
Camerastraat 9 (2e verdieping)	36 546 07 00
1322 BB Almere	Fax: +31
Postbus 60112	36 523 51 48
1320 AC Almere	
www.nilfisk-advance.nl	

Ireland (Sales Sub)

Nilfisk-Advance Limited	Phone: +35
28 Sandyford Office Park	3 12 94 38 38
Sandyford, Dublin 18	Fax: +35
Ireland	3 12 94 38 45

Italy (Prod & Sales Sub)

CFM SpA	Phone: +39
Nilfisk-Advance Div. Guardamiglio	0377 /414021
Localita Novella III	/45 1124
I-26862 Guardamiglio (Mi)	Fax: +39
	0377 51 443

Italy (Prod & Sales Sub)

CFM S.p.A.	Phone: +39
Via Porrettana 1991	059 973 0000
I-41059 Zocca (Modena)	Fax: +39
cfm@cfm.it	059 973 0099

Norway (Sales Sub)

Nilfisk-Advance AS	Phone: +47
Ulvenveien 89C	23 06 75 00
N-0581 Oslo	Fax: +47
	23 06 75 01

Poland (Sales Sub)

Nilfisk-Advance Sp.Z.O.O.	Phone: +48
05-800 Pruszków	22 738 37 50
ul. 3-go MAJA 8	Fax: +48
Poland	22 738 37 51

Portugal (Sales Sub)

Nilfisk-Advance, Lda.	Phone: +35
Sintra Business Park	121 911 2670
Zona Industrial Da Abrunheira	Fax: +35
Edificio 1, 1o A	121 911 2679
P-2710-089 Sintra	

Russia (Sales Sub)

Nilfisk-Advance LLC	Phone: 7
Vyatskaya str. 27, bld. 7	095 783 9602
127015 Moscow	Fax: +7
Russia	095 783 9603

Spain (Sales Sub)

Nilfisk-Advance S.A.	Phone: +34
Torre D'Ara	93 741 2400
Passeig del Rengle, 5 Pl.10	Fax: +34
E-08302 Mataró (Barcelona)	93 757 8020
nilfisk@nilfisk-advance.es	

Sweden (Sales Sub)

Nilfisk -Advance A/S	Phone: +46
Sjöbjörnsvägen 5	8555 94400
Box 44045	Fax: +46
S-100 73 Stockholm	8555 94430
info@nilfisk-advance.se	
www.nilfisk-advance.se	

Sweden (Prod.)

Nilfisk-Advance A/S	Phone: +46
Åmål Branch	5321 7500
Strömsbergsgatan	Fax: +46
Box 127	5321 7595
S-662 23 Åmål	

Switzerland (Sales Sub)

Nilfisk-Advance AG	Phone: +41
Ringsstrasse 19	71 92 38 444
Kirchberg/Industrie Stelzl	Fax: +41
CH-9500 Wil	71 92 35 283

www.nilfisk-advance.ch

UK (Sales Sub)

Nilfisk-Advance Limited	Phone: +44
Newmarket Road	1284 763163
Bury St. Edmunds	Fax: +44
UK-Suffolk IP33 3SR	1284 750 562

USA (Prod.)

Nilfisk-Advance Inc.	Phone: +1 763
14600 21.st Avenue North	745 3500
Plymouth, MN 55447-3408	Fax: +1 763
www.mn.nilfisk-advance.com	745 3718

USA (Sales Sub)

Nilfisk-Advance America Inc.	Phone: +1 610
300 Technology Drive	647 6420
Malvern, PA 19355	Fax: +1 610
www.pa.nilfisk-advance.com	647 6427

Canada (Sales Sub)

Nilfisk-Advance Canada Comp.	Phone: +1 905
396 Watline Avenue	712 3260
Mississauga, Ontario L4Z 1X2	Fax: +1 905
	712 3255

Australia (Sales Sub)

Nilfisk-Advance Pty. Ltd.	Phone: +61(0)2
48 Egerton Street	9648 2700
Silverwater, NSW 2128	Fax: +61(0)2
Postal addresse:	9648 2711
PO Box 6046	
Silverwater. NSW 1811	
info@nilfisk-advance.com.au	
www.nilfisk-advance.com.au	

China (Shenzhen)

Nilfisk-Advance (Shenzhen) Ltd	Phone: +86 755
Blok 3, Unit 130, 1001 Honghua Road	8359 7937 el.
Int. Commercial & Trade Center	8359 7939-42
Fuitian Free Trade Zone	Fax: +86 755
518038 Shenzhen	8359 1063
P.R. China	

China (Suzhou)

Nilfisk-Advance Professional	Phone: +86 512
Cleaning Equipment (Suzhou) Co. Ltd.	8918 5656
306 Su Hong Zhong Road, Build. 2	Fax: +86 512
Suzhou Industrial Park	8918 5666
215021 Suzhou	
P.R. China	

Hong Kong (Sales Sub)

Nilfisk-Advance Ltd.	Phone: +852
2001 HK Worsted Mills Ind'l Bldg.,	2427 5951
31-39 Wo Tong Tsui St.	Fax: +852
Kwai Chung, Hong Kong	2487 5828

Japan (Sales Sub)

Nilfisk-Advance Inc.	Phone: +8145
3-17-40-101 Chigasaki Higashi	942 7741
Tsuzuki-ku, Yokohama 224-0033	Fax: +8145
Japan	942 6545

Malaysia (Sales Sub)

Nilfisk-Advance Sdn Bhd	Phone: +60 3
No. 21, Jalan SS 25/41	7956 8188
Mayang Industrial Park	Fax: +60 3
47301 Petaling Jaya	7966 6828
Selangor, Malaysia	

New Zealand (Sales Sub)

Nilfisk-Advance Limited	Phone: +64(0)9
Danish House	525 0092
6 Rockridge Avenue	Fax: +64(0)9
Penrose 92-829	525 6440
Auckland1135	
Postal addresse:	
Private Bag 92 825	
Auckland	
New Zealand	

Singapore (Sales Sub)

Nilfisk-Advance Pte. Ltd.	Phone: + 65
22,Woodlands Industrial Park E1	6 7599100
Singapore 757740	Fax: +65
sales@nilfisk-advance.com.sg	7599133

Taiwan, ROC (Sales Sub)

Nilfisk-Advance Ltd.	Phone: +886
Taiwan Branch (H.K.)	2 2239 8812
1F, No. 193, Sec.2	Fax: +886
Xing Long Rd., Taipei	2 2239 8832
Taiwan, R.O.C.	

Thailand (Sales Sub)

Nilfisk-Advance Co. Ltd.	Phone: +66 2
89 Soi Chokechai-Ruammitr	275-5630
Viphavadee-Rangsit Road	Fax: +66 2
Ladyao, Jatuchak, Bangkok 10900	691-4079
Thailand	



www.nilfisk-advance.com

© 2004 Printed in USA