



Electronic Service Manuals

This electronic document is provided as a service to our customers. We do not create the contents of the information contained in this document. Should you have detailed questions pertaining to the information contained in this document, you may contact Michco, or the manufacturer which provided the original information in this electronic deliverable. Michco's only part in this electronic deliverable was the electronic assembly process.

You may contact Michco through the following methods:
Phone (517) 484-9312 or (800) 331-3339 MI, OH, IN only
2011 N. High St. -- Lansing, Michigan -- 48906
Fax: (517) 484-9836
Email: CustServ@Michco.com
Web site: www.Michco.Com
Parts Web site: www.FloorMachineParts.Com

Order Parts on Line at:
www.FloorMachineParts.Com

Directly to Parts & Service:
By Email: **Shop@Michco.com**
By Fax: (517) 702-2041
By Voice: Use numbers above.

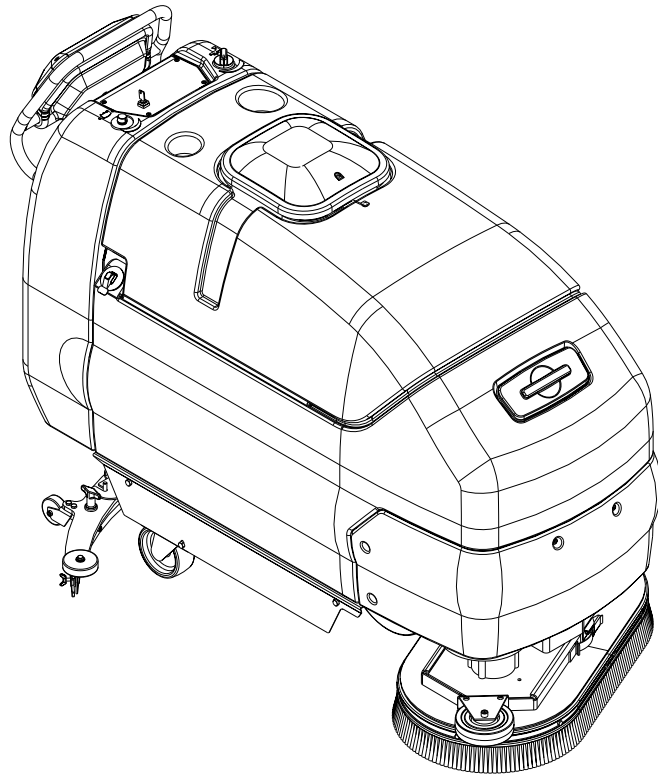
Serving the Cleaning Industry Since 1922

Notice: All copyrighted material remains property of original owners, all trademarks are property of respective owners. Manuals are subject to Manufacturer's reproduction limitations. Originals or reproductions were provided by manufacturers through a request. We make no warranty as to the correctness of information provided in this document and you assume all risk.

ConvertaMAX™ 28

I-MAX™ 28HD

BA 750 / BA 850



PARTS LIST

Advance MODELS 56396000, 5639600

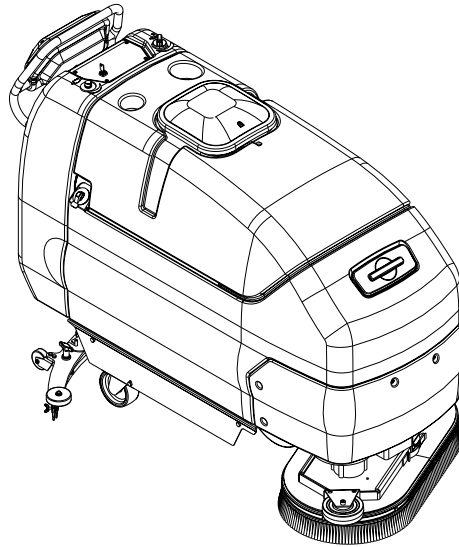
Nilfisk MODELS 56396002, 56396003



**Nilfisk
Advance**

setting standards

1/00 revised 3/02 FORM NO. 56042382
BOOK E SECTION 5.9.1

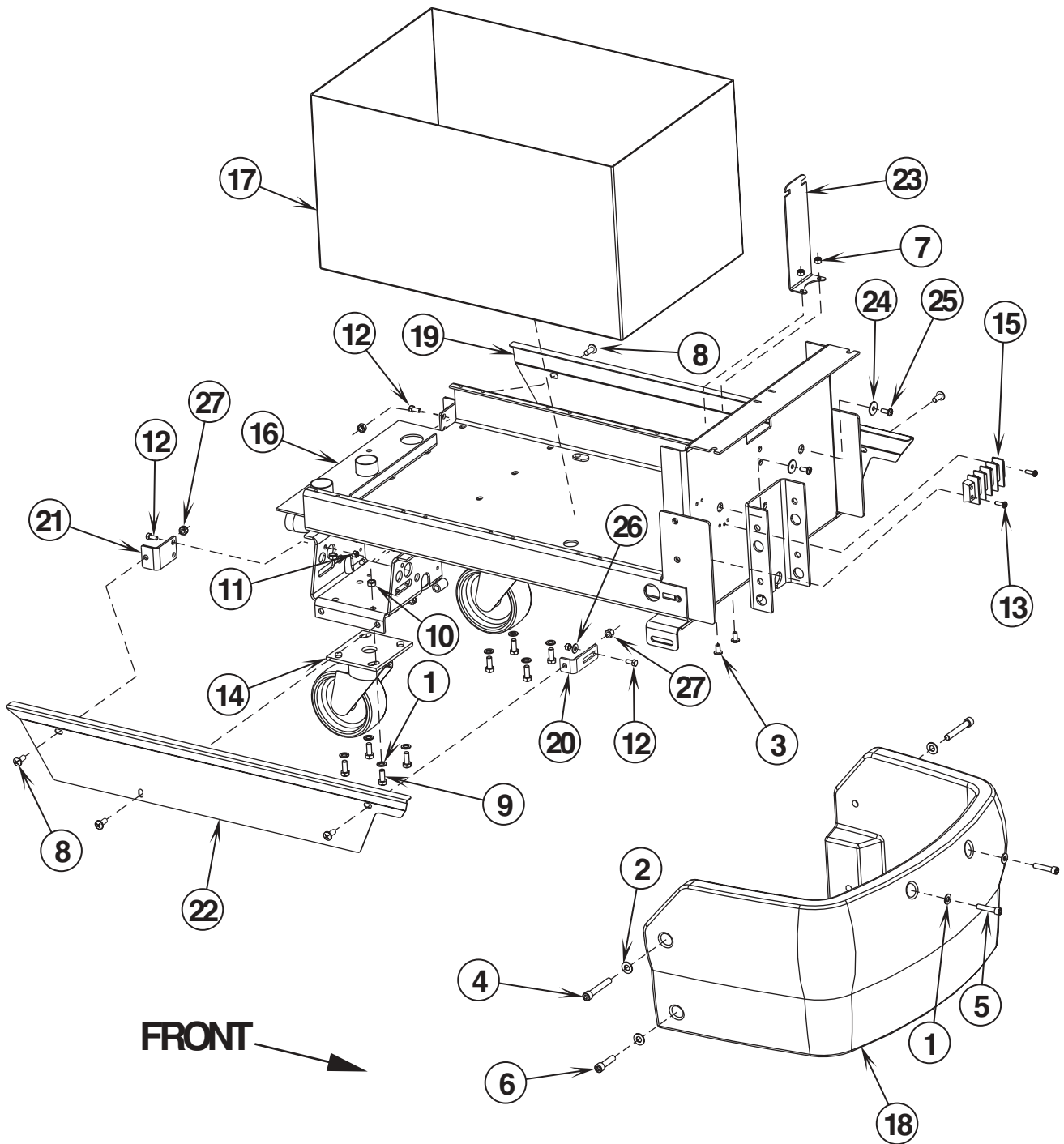


DESCRIPTION	PLAN
CONVERTAMAX™ 28 / BA 750 CHASSIS SYSTEM	E-5.9.1-3
BA 850 CHASSIS SYSTEM	E-5.9.1-5
I-MAX™ 28HD CHASSIS SYSTEM	E-5.9.1-7
CONTROL HANDLE SYSTEM	E-5.9.1-9
HANDLE PADDLE ASSEMBLY	E-5.9.1-11
DRIVE WHEEL SYSTEM	E-5.9.1-13
C-MAX 28 / I-MAX 28HD / BA 750 SCRUB SYSTEM	E-5.9.1-15
BA 850 SCRUB SYSTEM	E-5.9.1-17
SKIRT ASSEMBLIES (BA 750 / BA 850)	E-5.9.1-19
SKIRT ASSY. (CONVERTAMAX 28 / I-MAX 28HD)	E-5.9.1-21
SOLUTION SYSTEM	E-5.9.1-23
RECOVERY SYSTEM5	E-5.9.1-25
SQUEEGEE SYS (all C-MAX 28, I-MAX 28HD, BA 750 / BA 850 before SN 1477842)	E-5.9.1-27
SQUEEGEE SYSTEM (BA 850 after SN 1477841)	E-5.9.1-29
SQUEEGEE ASSY (C-MAX 28 / I-MAX 28HD / BA 750)	E-5.9.1-31
BA 850 SQUEEGEE ASSY (before SN 1477842)	E-5.9.1-33
BA 850 SQUEEGEE ASSY (after SN 1477841)	E-5.9.1-35
DECAL SYSTEM	E-5.9.1-37
ELECTRICAL DIAGRAM	E-5.9.1-39
BRUSH / DISC SELECTOR GUIDE	E-5.9.1-40

WHEN ORDERING PARTS

- * Use the 8 digit numbers from the "Ref. No." columns in this parts list.
- * Specify the model and serial number of the machine.
- * Use the space below to record the model and serial number for future reference.

Model _____ Serial No. _____

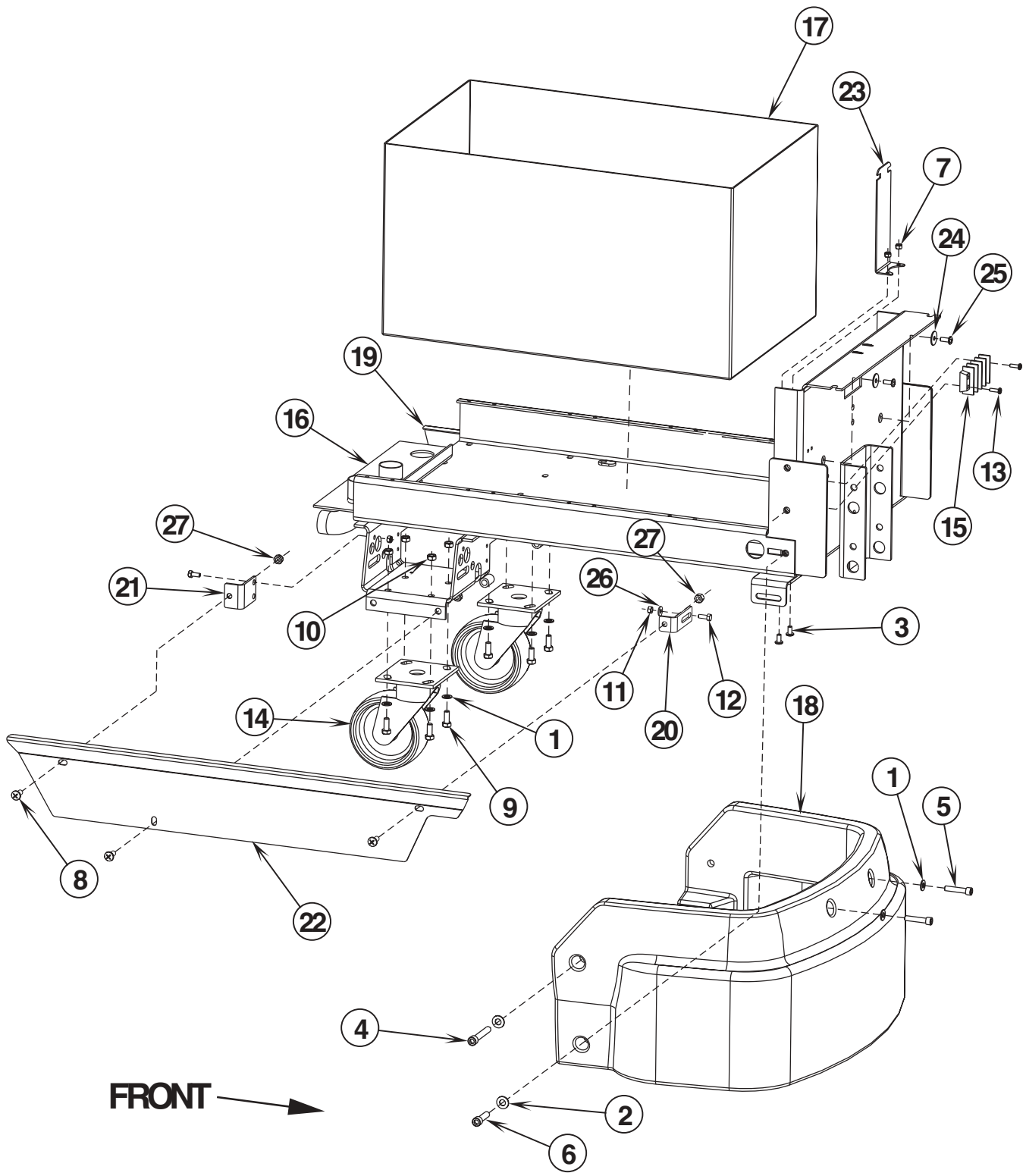


00-1	CONVERTAMAX 28 / BA 750 CHASSIS SYSTEM	BOOK E		
01-10	ConvertaMAX 28 / I-MAX 28HD / BA 750 / BA 850	E	5.9.1	3

Item	Ref. No.	Qty	Description
1	56001939	10	Wsh, Flt SAE 5/16
2	56002063	4	Wsh, Flt SAE 3/8
3	56002900	2	Scr, Pan Phil SS 10-24 x .50
4	56002196	2	Scr, Soc Hd 3/8-16 x 2.50
5	56002201	2	Scr, Soc Hd 5/16-18 x 1.50
6	56002316	2	Scr, Soc Hd 3/8-16 x 1.50
7	56002768	2	Nut, Hex Nyl Loc 10-24
8	56002793	6	Scr, Pan Phil 5/16-18 x .75
9	56003179	8	Scr, Hex Thd To Hd M8-1.25 x 20mm
10	56003389	8	Nut, Hex Nyl Loc M8-1.25
11	56003403	4	Nut, Hex Nyl Loc M6-1.00
12	56003174	4	Scr, Hex Thd to Hd M6-1.00 x 16mm
13	56009042	2	Scr, Pan Phil Thd Form 10-24 x .62
14	56440450	2	Caster, Swivel
**	56440451	2	Caster, Swivel Neoprene
15	56026111	1	Term. Block, 4 Term. 50 Amp
*	56397184	2	Plate, Jumper
16	56035277	1	Weldment, Upper Chassis
17	56056727	1	Box, Battery Molded
18	56396083	1	Front Shroud
19	56396115	1	Panel, Left
20	56396116	2	Clip, Slotted
21	56396117	2	Clip
22	56396118	1	Panel, Right
23	56396200	1	Bracket, Vac Exhaust Hose
24	56009002	2	Wsh, Flt .266 x .906 x .060
25	56002066	2	Scr, Pan Phil 1/4-20 x .62
26	56002098	2	Wsh, Flt SAE 1/4
27	56002701	6	Nut, Hex Nyl Loc 5/16-18
*	56397208	1	Spacer, Battery (ConvertaMAX 28 only)

* = Not Shown

** = Optional

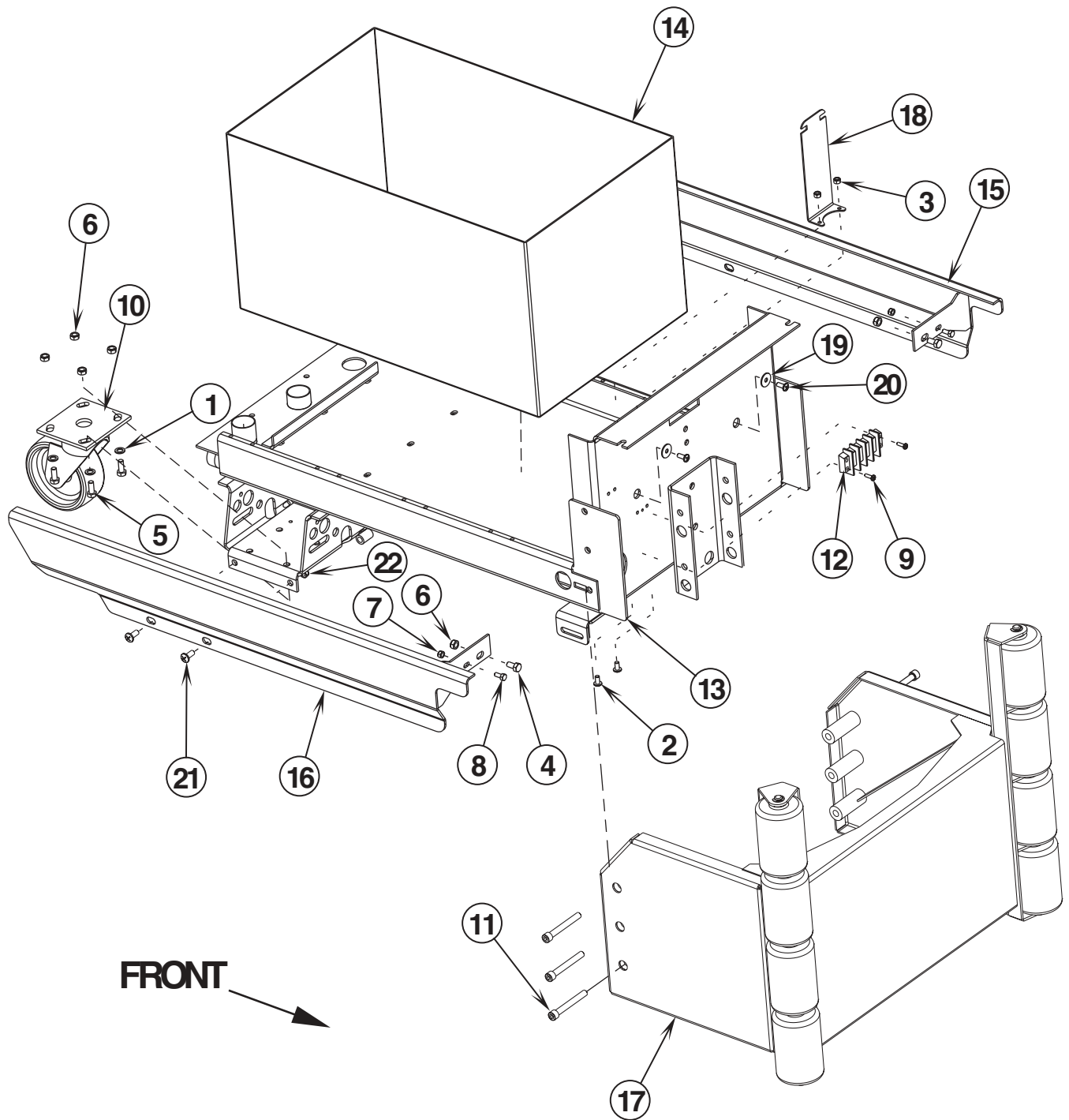


00-1	BA 850 CHASSIS SYSTEM	BOOK E		
01-6	ConvertaMAX 28 / I-MAX 28HD / BA 750 / BA 850	E	5.9.1	5

Item	Ref. No.	Qty	Description
1	56001939	10	Wsh, Flt SAE 5/16
2	56002063	4	Wsh, Flt SAE 3/8
3	56002900	2	Scr, Pan Phil SS 10-24 x .50
4	56002196	2	Scr, Soc Hd 3/8-16 x 2.50
5	56002201	2	Scr, Soc Hd 5/16-18 x 1.50
6	56002316	2	Scr, Soc Hd 3/8-16 x 1.50
7	56002768	2	Nut, Hex Nyl Loc 10-24
8	56002793	6	Scr, Pan Phil 5/16-18 x .75
9	56003179	8	Scr, Hex Thd To Hd M8-1.25 x 20mm
10	56003389	8	Nut, Hex Nyl Loc M8-1.25
11	56003403	4	Nut, Hex Nyl Loc M6-1.00
12	56003174	4	Scr, Hex Thd to Hd M6-1.00 x 16mm
13	56009042	2	Scr, Pan Phil Thd Form 10-24 x .62
14	56440450	2	Caster, Swivel
**	56440451	2	Caster, Swivel Neoprene
15	56026111	1	Term. Block, 4 Term. 50 Amp
*	56397184	2	Plate, Jumper
16	56035277	1	Weldment, Upper Chassis
17	56056727	1	Box, Battery Molded
18	56396084	1	Panel, Front
19	56396115	1	Panel, Left
20	56396116	2	Clip, Slotted
21	56396117	2	Clip
22	56396118	1	Panel, Right
23	56396200	1	Bracket, Vac Exhaust Hose
24	56009002	2	Wsh, Flt .266 x .906 x .060
25	56002066	2	Scr, Pan Phil 1/4-20 x .62
26	56002098	2	Wsh, Flt SAE 1/4
27	56002701	6	Nut, Hex Nyl Loc 5/16-18

* = Not Shown

** = Optional

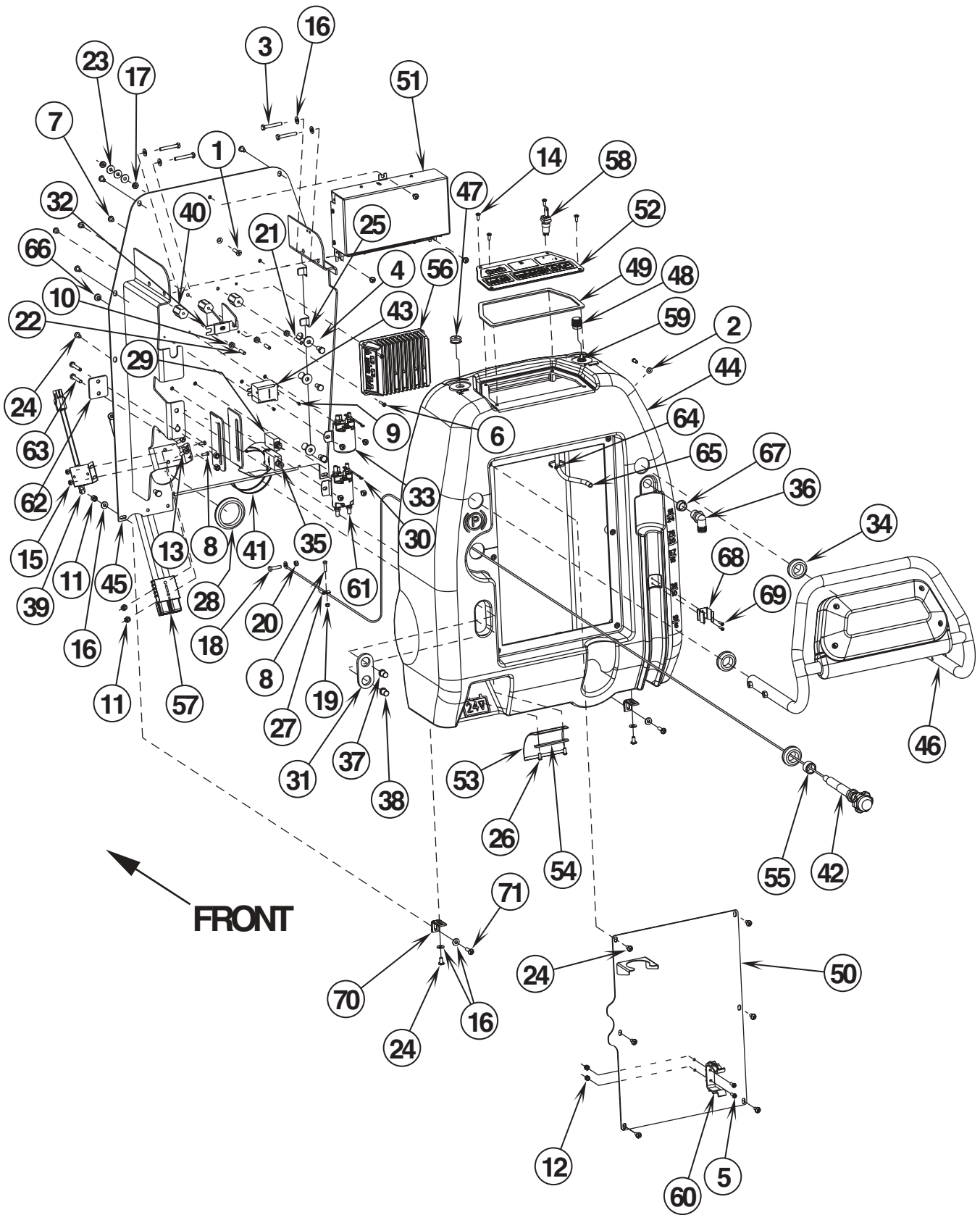


00-1	I-MAX™ 28HD CHASSIS SYSTEM	BOOK E		
01-10	ConvertaMAX 28 / I-MAX 28HD / BA 750 / BA 850	E	5.9.1	7

Item	Ref. No.	Qty	Description
1	56001939	8	Wsh, Flt SAE 5/16
2	56002900	2	Scr, Pan Phil SS 10-24 x .50
3	56002768	2	Nut, Hex Nyl Loc 10-24
4	56003178	2	Scr, Hex M8-1.25 x 16mm
5	56003179	8	Scr, Hex Thd To Hd M8-1.25 x 20mm
6	56003389	10	Nut, Hex Nyl Loc M8-1.25
7	56003403	2	Nut, Hex Nyl Loc M6-1.00
8	56003174	2	Scr, Hex Thd to Hd M6-1.00 x 16mm
9	56009042	2	Scr, Pan Phil Thd Form 10-24 x .62
10	56440450	2	Caster, Swivel
**	56440451	2	Caster, Swivel Neoprene
11	56003542	6	Scr, Soc Hd 3/8-16 x 3.00
12	56026111	1	Term. Block, 4 Term. 50 Amp
*	56397184	2	Plate, Jumper
13	56035277	1	Weldment, Upper Chassis
14	56056727	1	Box, Battery Molded
15	56396103	1	Left Side Weldment
16	56396104	1	Right Side Weldment
17	56396134	1	Assembly, Bumper Industrial
*	56003264	2	Ring, Ret Ext Type E .50 Dia.
*	56009097	2	Nut, Push Cap 1/2
*	56392102	8	Roller
*	56392809	2	Rod
*	56396133	1	Weldment, Bumper Industrial
18	56396200	1	Bracket, Vac Exhaust Hose
19	56009002	2	Wsh, Flt .266 x .906 x .060
20	56002066	2	Scr, Pan Phil 1/4-20 x .62
21	56002793	4	Scr, Pan Phil 5/16-18 x .75
22	56002701	4	Nut, Hex Nyl Loc 5/16-18
*	56397208	1	Spacer, Battery
**	56396260	1	Industrial Side Panel Kit

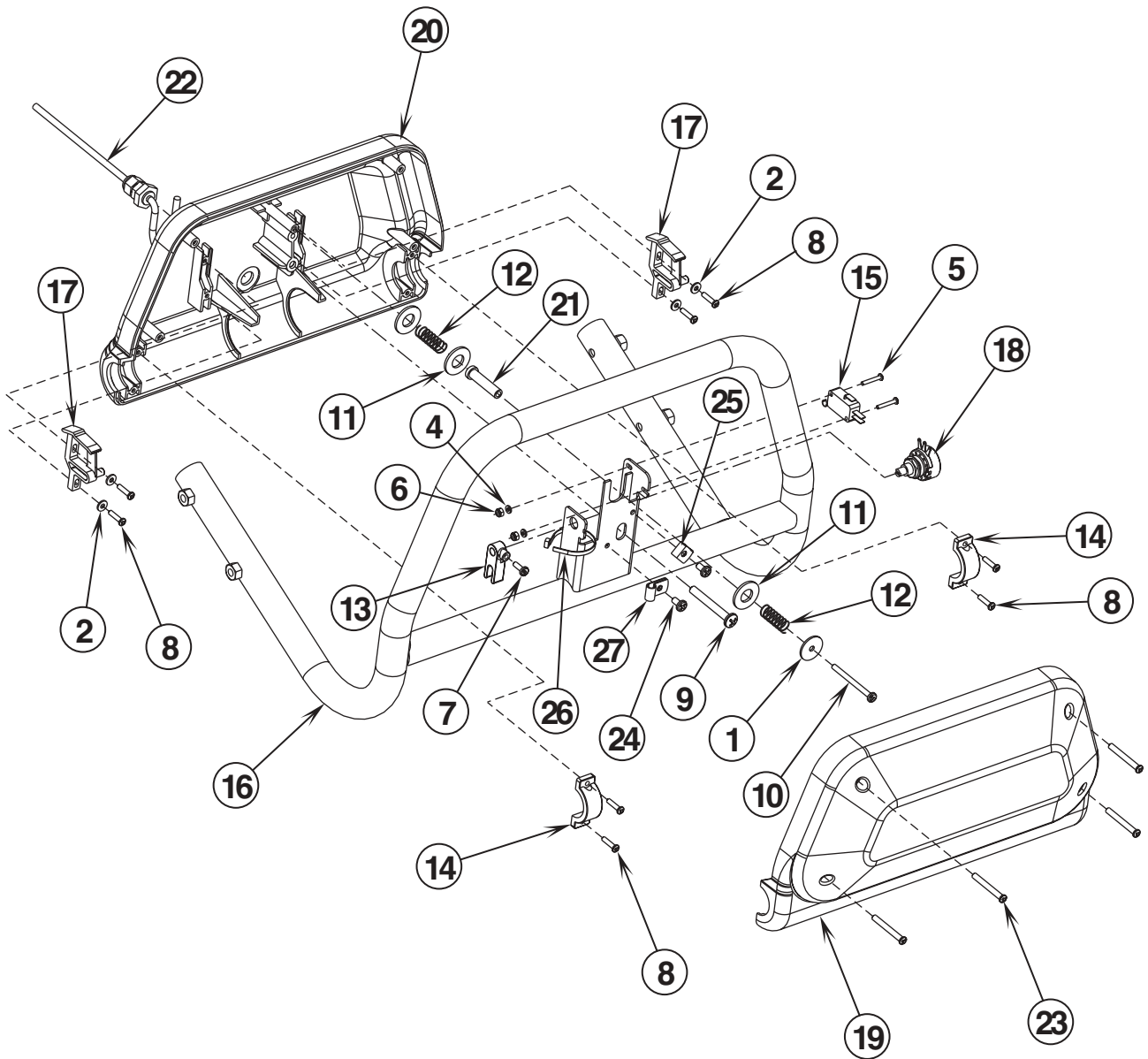
* = Not Shown

** = Optional



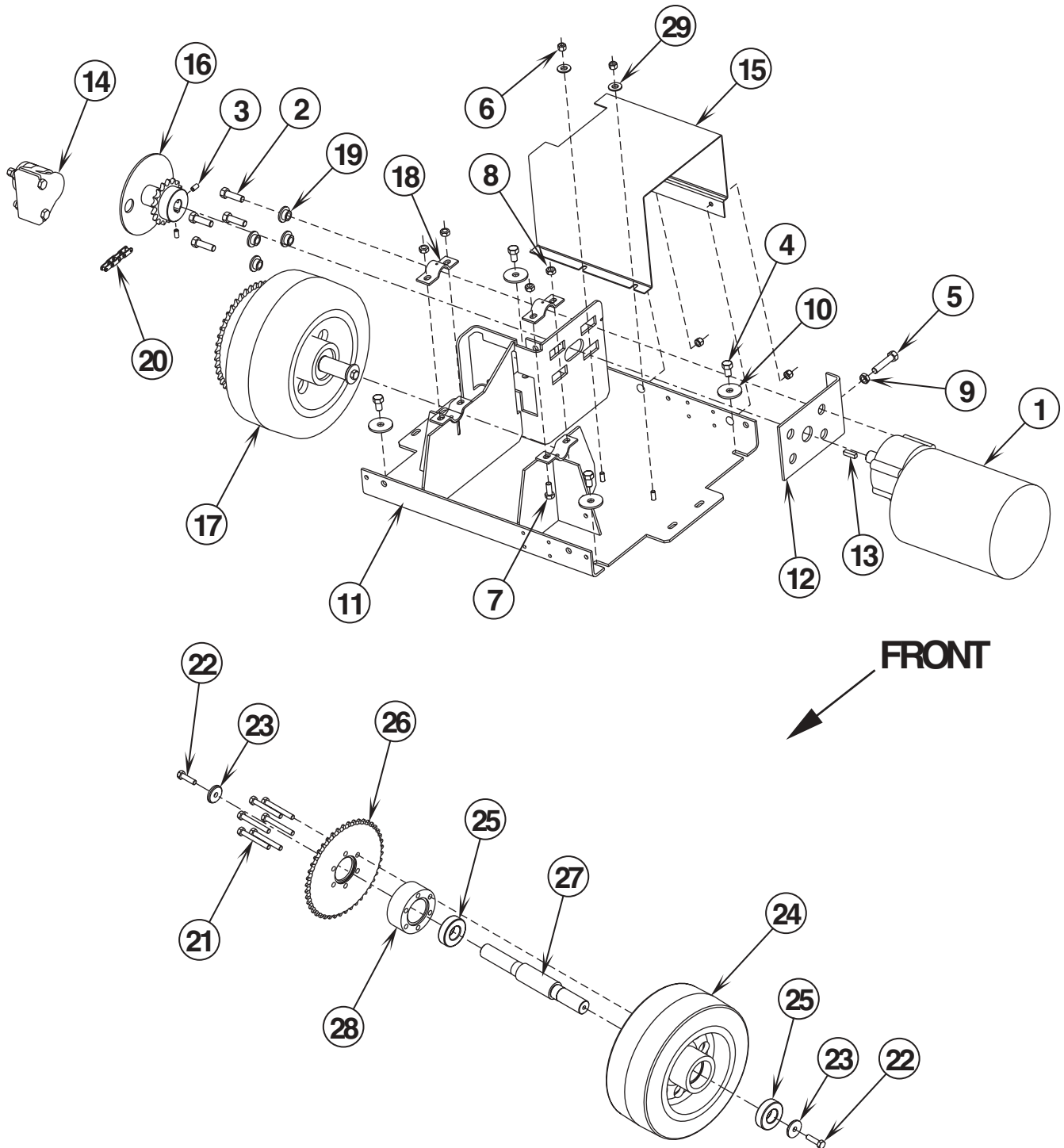
00-1	CONTROL HANDLE SYSTEM	BOOK E		
02-3	ConvertaMAX 28 / I-MAX 28HD / BA 750 / BA 850	E	5.9.1	9

Item	Ref. No.	Qty	Description	Item	Ref. No.	Qty	Description
1	56001832	1	Scr, Flt Phil 1/4-20 x 1.00	52	56396161	1	Display Panel Assembly
2	56001954	1	Wsh, Flt SAE #10	53	56396166	1	Flap, Charger Plug
3	56001967	4	Scr, Hex Hd 1/4-20 x 1.75	54	56396167	1	Strap
4	56002035	6	Scr, Hex Hd 5/16-18 x .62	55	56396177	1	Spacer
5	56002124	2	Scr, Pan Phil 10-24 x .62	56	56396185	1	Controller, 24V
6	56009034	2	Scr, Pan Phil Thd Form 8-32 x .88	57	56396187	1	Charge Connector Assy
7	56002462	10	Scr, Pan Phil 1/4-20 x .38	58	56396188	1	Switch, Key
8	56002503	3	Scr, Hex Hd 10-24 x .50	*	56396189	A/R	Replacement Key
9	56002539	2	Scr, Pan Phil Thd Form 6-32 x .31	59	56396197	1	Potentiometer, 100K
10	56002561	3	Nut, Hex W/SHPRF 1/4-20	60	56396199	1	Clamp, Plastic
11	56002708	6	Nut, Hex Nyl Loc 1/4-20	61	56397088	1	Contact, 24V, SPDT (Brush Motor)
12	56002768	2	Nut, Hex Nyl Loc 10-24	62	56397189	1	Spacer
13	56002825	2	Scr, Pan Phil 1/4-20 x 1.25	63	56001833	2	Scr, Hex Hd 1/4-20 x 1.50
14	56002831	4	Scr, Pan Phil Blk 10-24 x .50	64	56478246	1	Tie, Cable
15	56002832	2	Nut, Hex Nyl Loc-Thin 10-24	65	56396204	1	Hose, PVC 1/4 x 3/8 x 48
16	56002859	10	Wsh, Flt SAE SS 1/4	66	56321559	1	Grommet
17	56002840	2	Nut, Hex Nyl Loc-Thin 1/4-20	67	56900041	1	Plug, Cap
18	56003358	1	Scr, Hex M6-1.00 x 25mm	*	56396192	1	Harness, Handle Wiring TSB 737
19	56002768	1	Nut, Hex Nyl Loc 10-24	68	56396252	1	Spring Clip (after March 2001)
20	56003403	1	Nut, Hex Nyl Loc M6-1.00	69	56003197	2	Scr, Pan Phil Plastite 6-18 x .62
21	56009203	1	Stud, 1/4-20				NOTE #2
22	56009020	2	Stud	70	56396218	2	Bracket, Panel NOTE #2
23	56009002	3	Wsh, Flt .266 x .906 x .060	71	56002785	2	Scr, Pan Phil 1/4-20 x .88
24	56009069	12	Scr, Pan Phil Loc 1/4-20 x .50				NOTE #2
25	56009122	6	Wsh, Flt .34 x .93 x .12				
26	56009191	3	Scr, Pan Phil Plastite 10-14 x .50				* = Not Shown
27	56220507	1	Clamp, P				
28	56262531	1	Grommet				NOTE #1:
29	56387316	1	Circuit Breaker 10 Amp (Control Circuit)				ConvertaMAX™ 28 before SN1481036 / I-MAX™ 28HD before SN1481045
30	56389265	2	Rectifier				BA 750 before SN1485937 / BA 850 before SN1485944
31	56407193	1	Gasket				NOTE #2:
32	56412089	1	Fuse, 150 Amp				ConvertaMAX™ 28 after SN1481035 / I-MAX™ 28HD after SN1481044
33	56412179	1	Contact, 24 VDC (Vac Motor)				BA 750 after SN1485936 / BA 850 after SN1485943
34	56418199	3	Grommet				NOTE #3:
35	56452193	1	Circuit Breaker 40 Amp (Wheel Drive)				ConvertaMAX™ 28 / I-MAX™ 28HD before SN1517776
36	56456802	1	Barb, 90 Elbow 11/16 x 3/4 NPT				BA 750 before SN1516328 / BA 850 before SN1516334
37	56459367	1	Boot, Reset Button				NOTE #4:
38	56459368	1	Boot, Reset Button				ConvertaMAX™ 28 / I-MAX™ 28HD after SN1517775
39	56462362	1	Switch (Charger Interlock)				BA 750 after SN1516327 / BA 850 after SN1516333
40	56469858	3	Electrical Mount				
41	56478523	2	Tie, Cable				
42	56056323	1	Cable, Brake Assy				
43	56396038	1	Relay, SPST, 24V (Brush Remove) TSB 776				
44	56396082	1	Back Panel TSB 769				
45	56396251	1	Back Panel Weld't NOTE #1 / TSB 769				
	56396113	1	Back Panel Weld't NOTE #2 / TSB 769				
46	56396147	1	Paddle, Handle Assembly (see associated pages)				
47	56396149	1	Grommet				
48	56056596	1	Knob				
49	56396151	1	Gasket				
50	56396155	1	Weldment, Electrical Cover				
51	56396156	1	Control Box Assy NOTE #3 / TSB 793				
	56396009	1	Control Box Assy NOTE #4 / TSB 793				



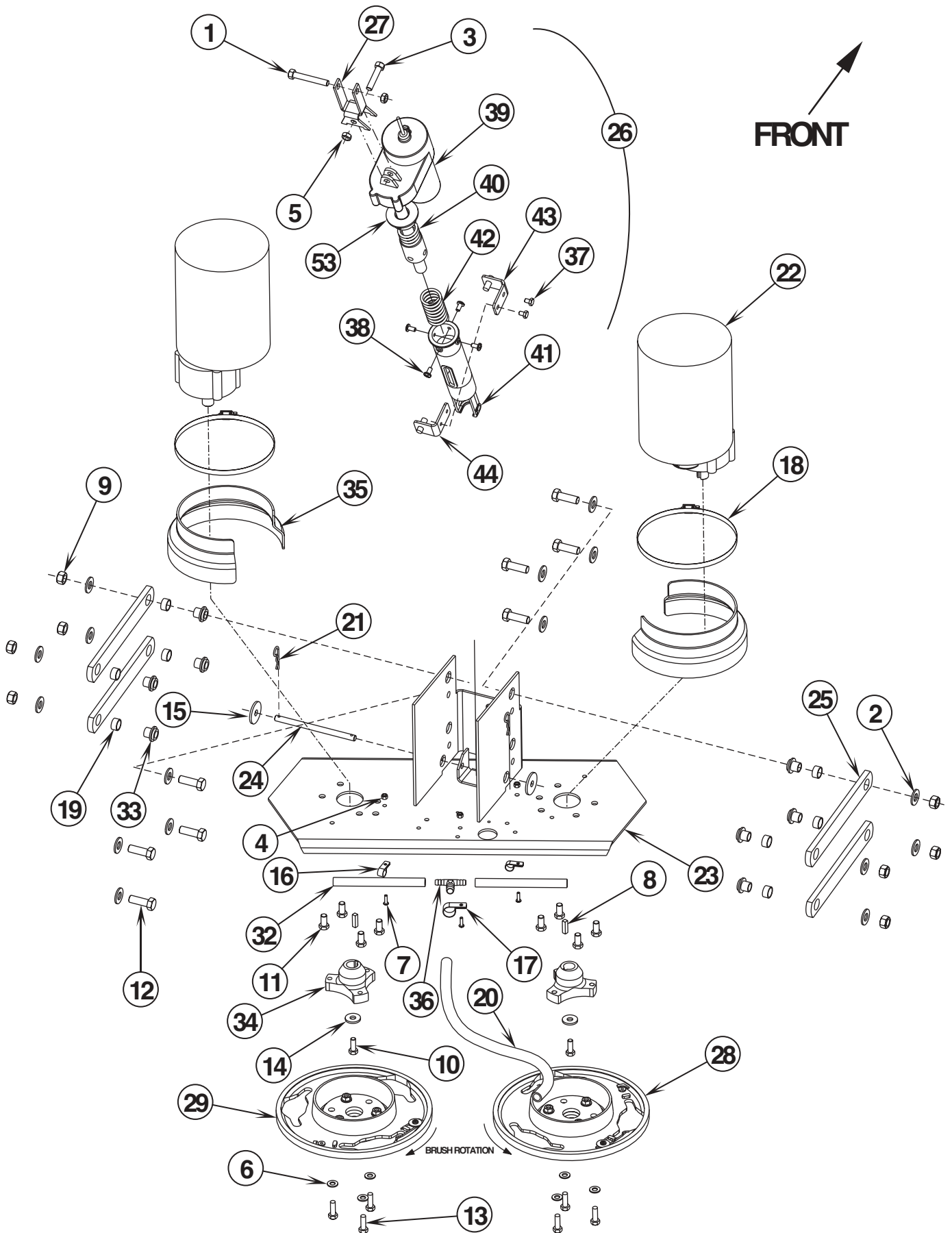
00-1	HANDLE PADDLE ASSEMBLY	BOOK E		
02-3	ConvertaMAX 28 / I-MAX 28HD / BA 750 / BA 850	E	5.9.1	11

Item	Ref. No.	Qty	Description
	56396147	1	Paddle, Handle Assembly (#1-27)
1	56009096	1	Wsh, Flt .193 x .875 x .060
2	56002006	4	Wsh, Flt SAE #6
3			Intentionally Omitted
4	56002431	2	Wsh, Flt SAE #4
5	56002713	2	Scr, Pan Phil 4-40 x .75
6	56002838	2	Nut, Hex Nyl Loc 4-40
7	56003354	1	Scr, Pan Phil M4 x 12
8	56003197	8	Scr, Pan Phil Plastite 6-18 x .62
9	56003527	1	Scr, Pan Phil Plastite 1/4-10 x 2.00
10	56009287	1	Scr, Pan Phil Type B 8 x 2.00
11	56397170	3	Washer, Plastic
12	56325654	2	Spring, Compression
13	56397172	1	Potentiometer Fork
14	56397171	2	Clamp
15	56263174	1	Switch, Snap SPDT (Squeegee Reverse)
16	56396114	1	Weldment, Handle
17	56397015	2	Cam Controller
18	56397029	1	Potentiometer, 5K
19	56397030	1	Paddle, Front Molded
20	56397031	1	Paddle, Back Molded
21	56397109	1	Sleeve
22	56396192	1	Harness Assembly TSB 737
23	56003199	4	Scr, Pan Phil Plastite 8-15 x 1.50
24	56009030	2	Scr, Pan Phil Thd Form 10-24 x .38
25	56220507	1	Clamp, P
26	56478246	1	Tie, Cable
27	56481890	1	Clamp, P



00-1	DRIVE WHEEL SYSTEM	BOOK E		
01-6	ConvertaMAX 28 / I-MAX 28HD / BA 750 / BA 850	E	5.9.1	13

Item	Ref. No.	Qty	Description
1	56396209	1	Motor and Gear Unit, 24V
2	56001858	4	Scr, Hex Hd 3/8-16 x 1.25
3	56001826	2	Scr, Soc Set Loc 5/16-18 x .50
4	56002127	4	Scr, Hex Hd 3/8-16 x .75
5	56002684	1	Scr, Hex Hd 3/8-16 x 1.75
6	56002708	4	Nut, Hex Nyl Loc 1/4-20
7	56003179	4	Scr, Hex Thd To Hd M8-1.25 x 20mm
8	56003389	4	Nut, Hex Nyl Loc M8-1.25
9	56009085	1	Nut, Hex Jam 3/8-16
10	56009242	4	Wsh, Flt .406 x 1.50 x .125
11	56035209	1	Weldment, Base, Motor and Wheel
12	56035262	1	Weldment, Bracket
13		1	Key, Sq .25 x .875 (supplied w/motor)
14	56056245	1	Brake, Mechanical Caliper
15	56056405	1	Cover, Motor
16	56396036	1	Sprocket Weldment
17	56396037	1	Wheel Assembly (#21-28)
18	56396039	2	Clamp, Axle
19	56396048	4	Bushing
20	56396033	1	Chain, Roller
21	56003634	6	Scr, Hex Loc 5/16-18 x 2.25
22	56003179	2	Scr, Hex M8-1.25 x 20mm
23	56358959	2	Washer, Flat
24	56376628	1	Wheel 10.00 x 4.00
25	56479430	2	Bearing, Ball
26	56396022	1	Sprocket
27	56396023	1	Axle
28	56396044	1	Spacer
29	56002098	2	Wsh, Flt SAE 1/4



Item	Ref. No.	Qty	Description	Item	Ref. No.	Qty	Description
1	56001873	1	Scr, Hex Hd 3/8-16 x 2.50	**	56505770	2	Pad Holder
2	56001879	16	Wsh, Flt SAE 1/2	**	56505771	2	MagnaGrit Brush
3	56002684	1	Scr, Hex Hd 3/8-16 x 1.75	**	56505772	2	DynaGrit Brush
4	56002808	3	Nut, Hex Nyl Loc 8-32	**	56505773	2	AgLite Grit Brush
5	56002841	2	Nut, Hex Nyl Loc-Thin 3/8-16	**	56505774	2	Prolene Brush
6	56002938	6	Wsh, Flt SAE SS 5/16	**	56505775	2	ProLite Brush
7	56003001	3	Scr, Pan Phil SS 8-32 x .62	**	56505776	2	Union Mix Brush
8	56003244	2	Key, Sq. .25 x .94	**	56505777	2	MidGrit Brush
9	56003312	8	Nut, Hex Nyl Loc M12-1.75	**	56505778	2	MidLite Brush
10	56003335	2	Scr, Hex Loc SS 5/16-18 x .88	**	56182058	2	Lock Collar, Snap
11	56003338	8	Scr, Hex Loc SS 3/8-16 x .75	**	56393567	2	Lock Collar, Thrd
12	56003415	8	Scr, Hex M12-1.75 x 35mm				
13	56003477	6	Scr, Hex Loc SS M8-1 x 25mm				
14	56009107	2	Wsh, Flt SS .378 x 1.00 x .12				
15	56009242	2	Wsh, Flt .406 x 1.50 x .125				
16	56152617	2	Clamp, P				
17	56328064	1	Clamp, P				
18	56355488	2	Clamp, Hose SAE #96				
19	56370878	8	Bearing, Sleeve				
20	56261263	1	Hose, Spiral .50 NOTE #1 / TSB 787				
	56172099	1	Hose, PVC Clear NOTE #2 / TSB 787				
21	56003120	2	Pin, Cotter Hair .09 x .375				
22	56027153	2	Motor and Gear Unit, 24V (ConvertaMAX™ 28 / BA 750)				
	56397079	2	Motor and Gear Unit, 24V (I-MAX™ 28HD)				
23	56035313	1	Weldment, Brush Head				
24	56056987	1	Shaft, Steel				
25	56396045	4	Arm				
26	56396049	1	Lift Actuator Assembly (#37-44, 53)				
27	56396066	1	Yoke, Actuator				
28	56396080	1	Lug, Counter-Clockwise (#45-52)				
29	56396081	1	Lug Clockwise (#45-52)				
30			Intentionally Omitted				
31			Intentionally Omitted				
32	56396195	2	Hose, PVE				
33	56396196	8	Bushing				
34	56397082	2	Hub, Drive				
35	56397112	2	Shroud, Motor				
36	56397300	1	Tee, Barb				
37	56009019	2	Scr, Hex Thd Form 1/4-20 x .38				
38	56009062	4	Scr, Pan Phil Thd Form 1/4-20 x .50				
39	56393303	1	Actuator, Motor				
*	56470433	1	Carbon Brush Set				
*	56393790	2	Limit Switch				
*	56388520	1	Plastic Drive Nut				
40	56412071	1	Compression Spring				
41	56412262	1	Housing, Spring				
42	56420018	1	Compression Spring				
43	56420019	1	Nut Retainer				
44	56420020	1	Nut Retainer				
45	56002938	3	Wsh, Flt SAE SS 5/16				
46	56003405	3	Nut, Hex Nyl Loc SS M8 x 1.25				
47	56003436	3	Scr, Hex Hd SS M8-1.25 x 25mm				
48	56009030	1	Scr, Pan Phil Thd Form 10-24 x .38				
49	56009096	1	Wsh, Flt .193 x .875 x .060				
50	56407053	2	Thermoid Disk				
51	56397081	1	Spring Retainer				
52	56397084	1	Brush Holder				
53	56396268	1	Spring Housing Guide (TSB 807)				

* = Not Shown

** = Not Included (optional)

NOTE #1:

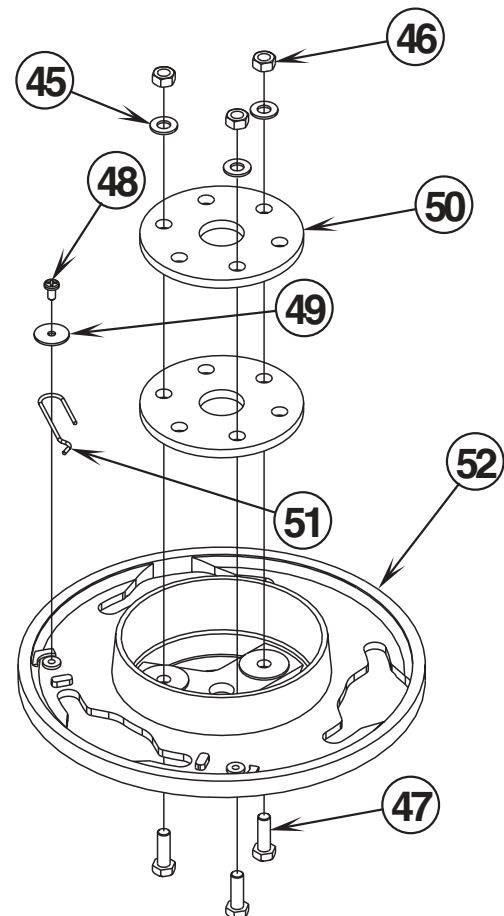
ConvertaMAX™ 28 / I-MAX™ 28HD before SN1517776

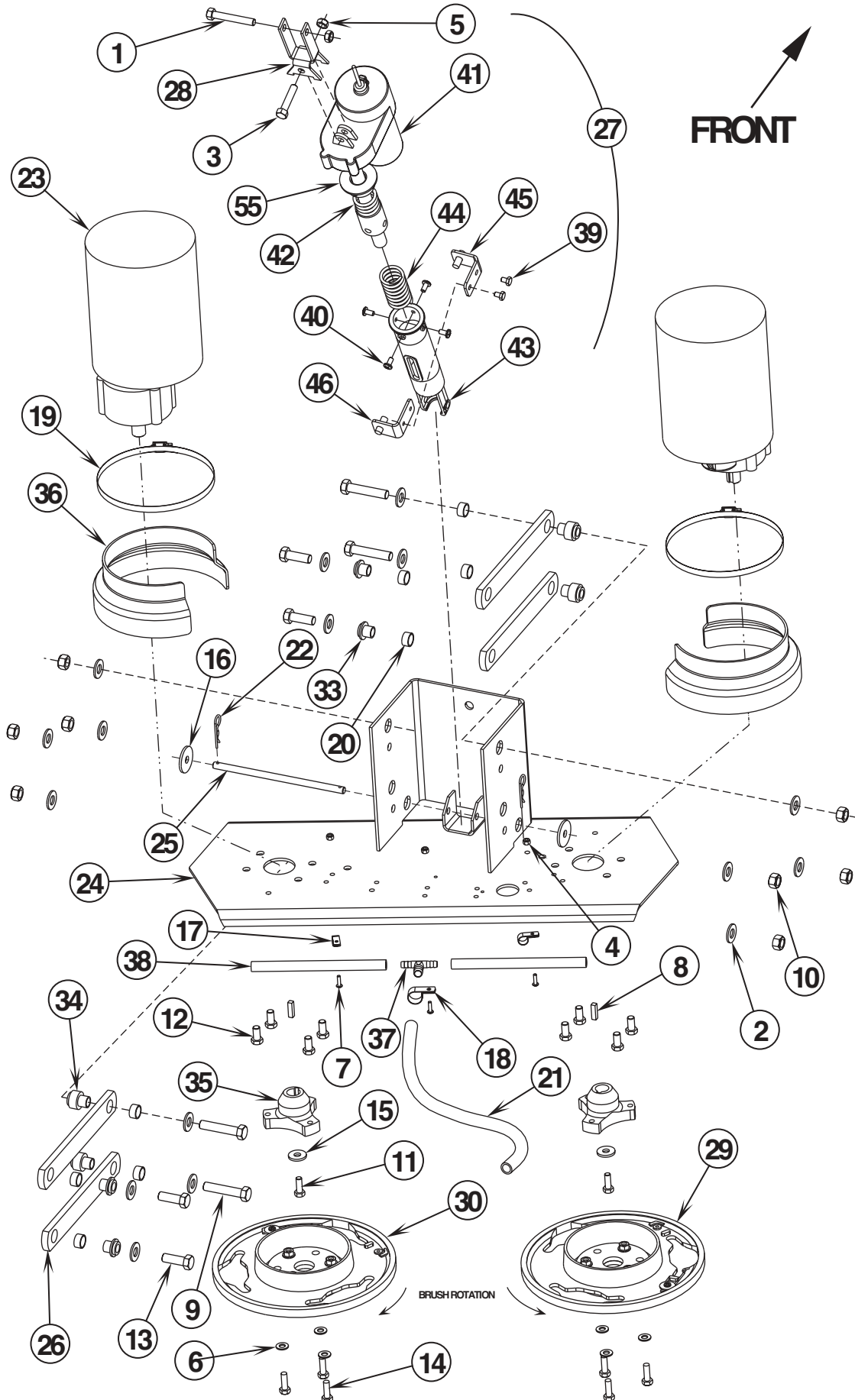
BA 750 before SN1516328

NOTE #2:

ConvertaMAX™ 28 / I-MAX™ 28HD after SN1517775

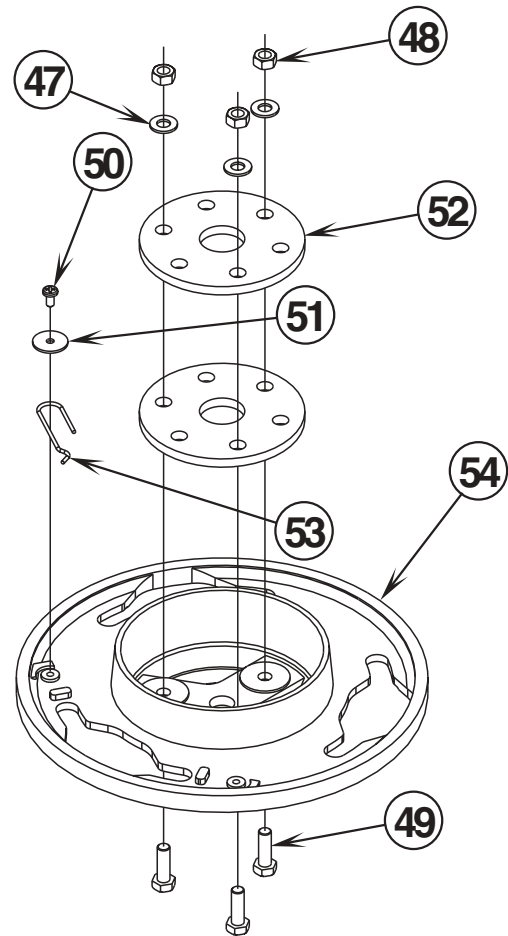
BA 750 after SN1516327

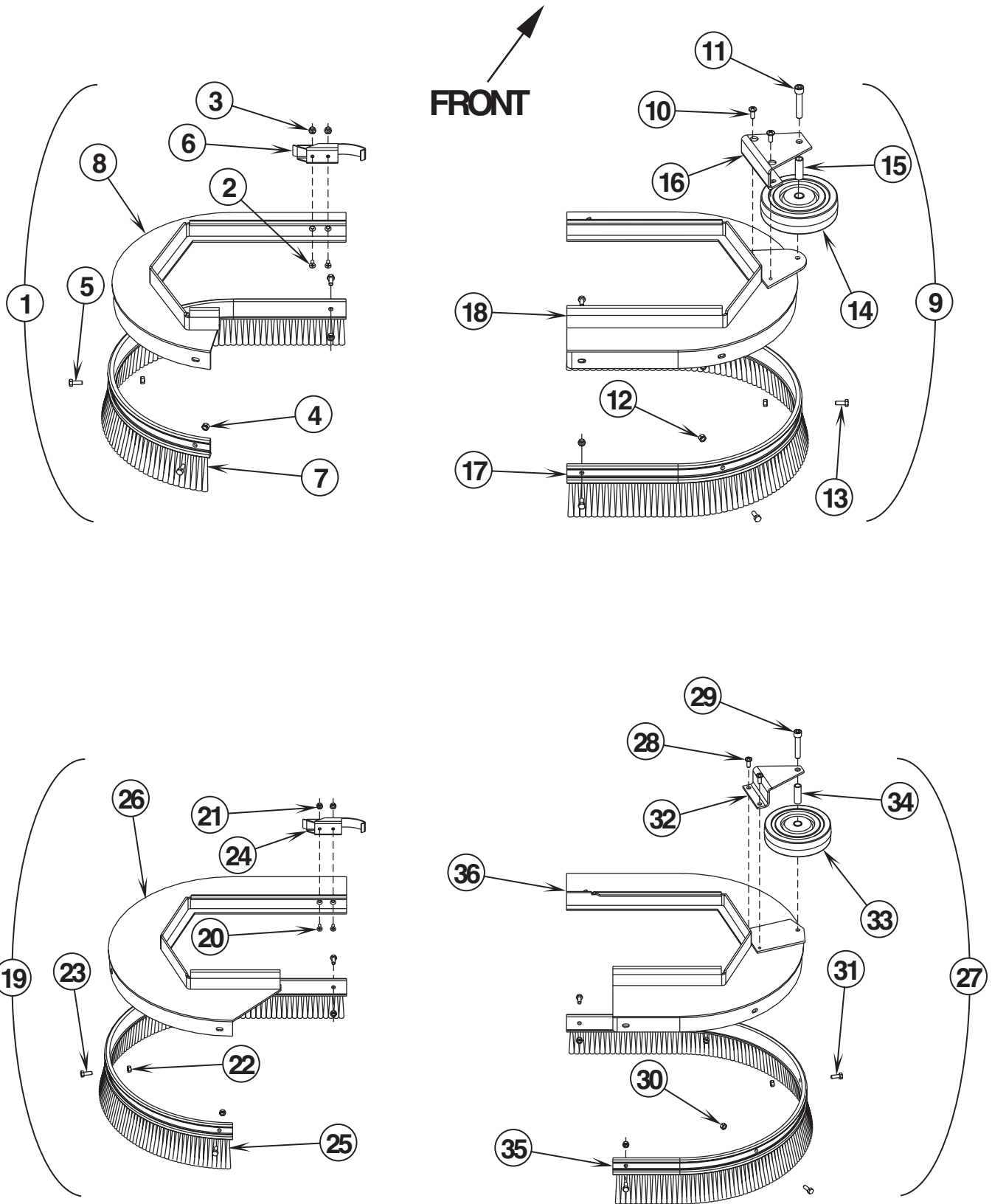




Item	Ref. No.	Qty	Description	Item	Ref. No.	Qty	Description
1	56001873	1	Scr, Hex Hd 3/8-16 x 2.50	**	56505780	2	Pad Holder
2	56001879	16	Wsh, Flt SAE 1/2	**	56505781	2	MagnaGrit Brush
3	56002684	1	Scr, Hex Hd 3/8-16 x 1.75	**	56505782	2	DynaGrit Brush
4	56002808	3	Nut, Hex Nyl Loc 8-32	**	56505783	2	AgLite Grit Brush
5	56002841	2	Nut, Hex Nyl Loc-Thin 3/8-16	**	56505784	2	ProLite Brush
6	56002938	6	Wsh, Flt SAE SS 5/16	**	56505785	2	ProLite Brush
7	56003001	3	Scr, Pan Phil SS 8-32 x .62	**	56505786	2	Union Mix Brush
8	56003244	2	Key, Sq. .25 x .94	**	56505787	2	MidGrit Brush
9	56003311	4	Scr, Hex M12-1.75 x 60mm	**	56505788	2	MidLite Brush
10	56003312	8	Nut, Hex Nyl Loc M12-1.75	**	56182058	2	Lock Collar, Snap
11	56003335	2	Scr, Hex Loc SS 5/16-18 x .88	**	56393567	2	Lock Collar, Thrd
12	56003338	8	Scr, Hex Loc SS 3/8-16 x .75				
13	56003415	4	Scr, Hex M12-1.75 x 35mm				
14	56003477	6	Scr, Hex Loc SS M8-1 x 25mm				
15	56009107	2	Wsh, Flt SAE .378 x 1.00 x .12				
16	56009242	2	Wsh, Flt .406 x 1.50 x .125				
17	56152617	2	Clamp, P				
18	56328064	1	Clamp, P				
19	56355488	2	Clamp, Hose SAE #96				
20	56370878	8	Bearing, Sleeve				
21	56261263	1	Hose, Spiral .50 (before SN1516334) TSB 787				
	56172099	1	Hose, PVC Clear (after SN1516333) TSB 787				
22	56003120	2	Pin, Cotter Hair .091 x .375				
23	56027153	2	Motor and Gear Unit, 24V				
24	56035078	1	Weldment, Brush Head				
25	56056474	1	Shaft, Steel				
26	56396045	4	Arm				
27	56396049	1	Lift Actuator Assembly (#39-46, 55)				
28	56396066	1	Yoke, Actuator				
29	56396080	1	Lug, Counter-Clockwise (#47-54)				
30	56396081	1	Lug Clockwise (#47-54)				
31			Intentionally Omitted				
32			Intentionally Omitted				
33	56396196	4	Bushing				
34	56396198	4	Bushing				
35	56397082	2	Hub, Drive				
36	56397112	2	Shroud, Motor				
37	56397300	1	Tee, Barb				
38	56397301	2	Hose, PVC				
39	56009019	2	Scr, Hex Thd Form 1/4-20 x .38				
40	56009062	4	Scr, Pan Phil Thd Form 1/4-20 x .50				
41	56393303	1	Actuator, Motor				
*	56470433	1	Carbon Brush Set				
*	56393790	2	Limit Switch				
*	56388520	1	Plastic Drive Nut				
42	56412071	1	Compression Spring				
43	56412262	1	Housing, Spring				
44	56420018	1	Compression Spring				
45	56420019	1	Nut Retainer				
46	56420020	1	Nut Retainer				
47	56002938	3	Wsh, Flt SAE SS 5/16				
48	56003405	3	Nut, Hex Nyl Loc SS M8 x 1.25				
49	56003436	3	Scr, Hex Hd SS M8-1.25 x 25mm				
50	56009030	1	Scr, Pan Phil Thd Form 10-24 x .38				
51	56009096	1	Wsh, Flt .193 x .875 x .060				
52	56407053	2	Thermoid Disk				
53	56397081	1	Spring Retainer				
54	56397084	1	Brush Holder				
55	56396268	1	Spring Housing Guide (TSB 807)				

* = Not Shown
 ** = Not Included (optional)



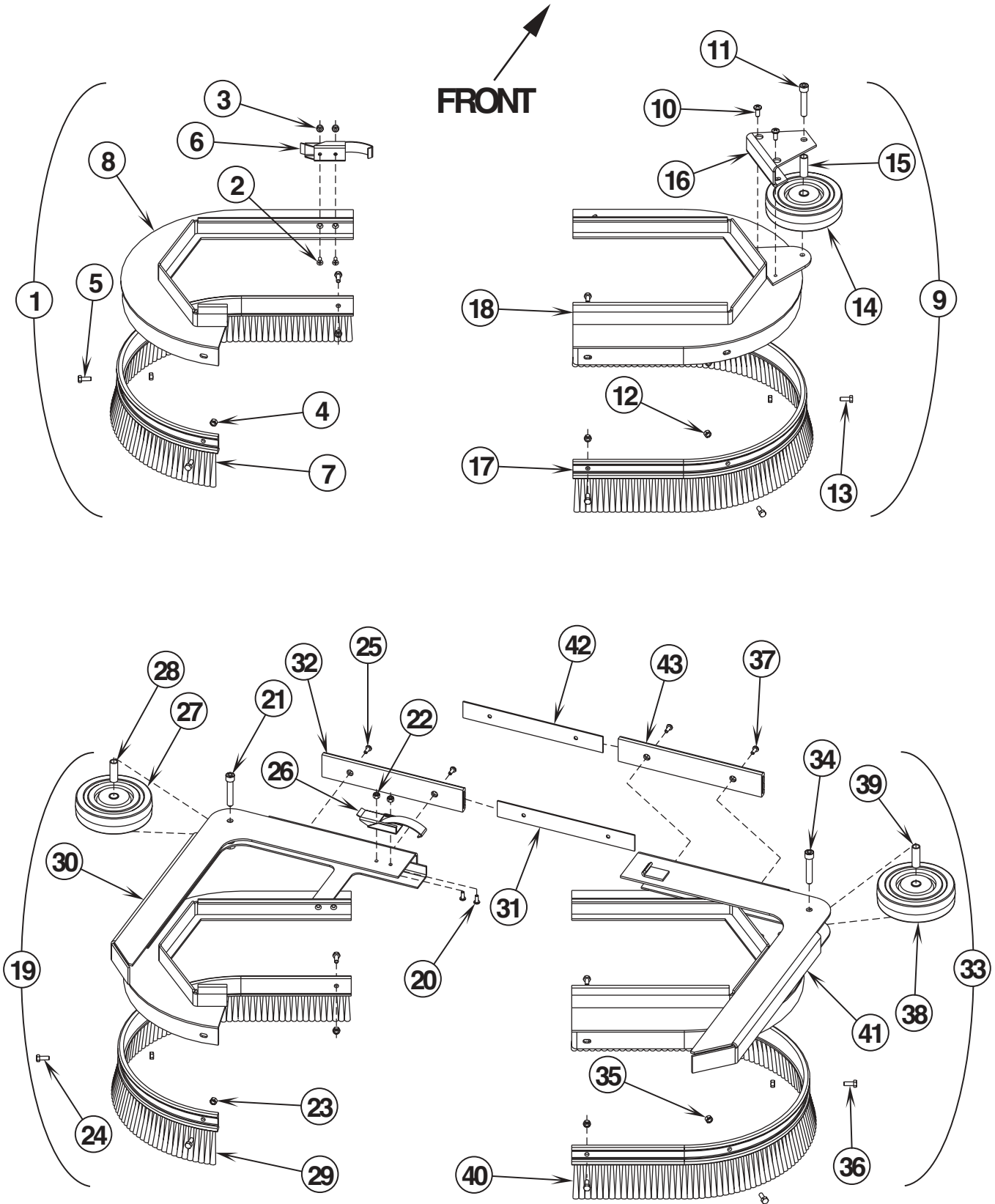


00-1	SKIRT ASSEMBLIES (BA 750 / BA 850)	BOOK E		
01-6	ConvertaMAX 28 / I-MAX 28HD / BA 750 / BA 850	E	5.9.1	19

Item	Ref. No.	Qty	Description
1	56396099	1	Assembly, Brush Cover, Left (#2-8 / BA 750)
2	56002178	2	Scr, Flt Phil 10-24 x .50
3	56002768	2	Nut, Hex Nyl Loc 10-24
4	56003426	4	Nut, Hex Nyl Loc SS M6-1.00
5	56003431	4	Scr, Hex Hd SS M6-1.00 x 16mm
6	56054306	1	Clamp, Toggle Latch
7	56396087	1	Skirt, Bristle, Left
8	56396094	1	Weldment, Brush Cover, Left
9	56396100	1	Assembly, Brush Cover, Right (#10-18 / BA 750)
10	56002066	2	Scr, Pan Phil 1/4-20 x .62
11	56002133	1	Scr, Soc Hd 3/8-16 x 2.00
12	56003426	5	Nut, Hex Nyl Loc SS M6-1.00
13	56003431	5	Scr, Hex Hd SS M6-1.00 x 16mm
14	56161691	1	Wheel, Black
15	56056684	1	Spacer, Steel
16	56056701	1	Bracket, Bumper Wheel
17	56396088	1	Skirt, Bristle, Right
18	56396095	1	Weldment, Brush Cover, Right
19	56396111	1	Assembly, Brush Cover, Left (#20-26 / BA 850)
20	56002178	2	Scr, Flt Phil 10-24 x .50
21	56002768	2	Nut, Hex Nyl Loc 10-24
22	56003426	4	Nut, Hex Nyl Loc SS M6-1.00
23	56003431	4	Scr, Hex Hd SS M6-1.00 x 16mm
24	56054306	1	Clamp, Toggle Latch
25	56396089	1	Skirt, Bristle, Left
26	56396109	1	Weldment, Brush Cover, Left
27	56396112	1	Assembly, Brush Cover, Right (#28-36 / BA 850)
28	56002066	2	Scr, Pan Phil 1/4-20 x .62
29	56002133	1	Scr, Soc Hd 3/8-16 x 2.00
30	56003426	5	Nut, Hex Nyl Loc SS M6-1.00
31	56003431	5	Scr, Hex Hd SS M6-1.00 x 16mm
32	56056120	1	Bracket, Brush Head, Guide
33	56161691	1	Wheel, Black
34	56056684	1	Spacer, Steel
35	56396090	1	Skirt, Bristle, Right
36	56396110	1	Weldment, Brush Cover, Right
**	56396008	1	Rubber Blade Kit (BA 750)
**	56397080	1	Rubber Blade Kit (BA 850)

** = Optional

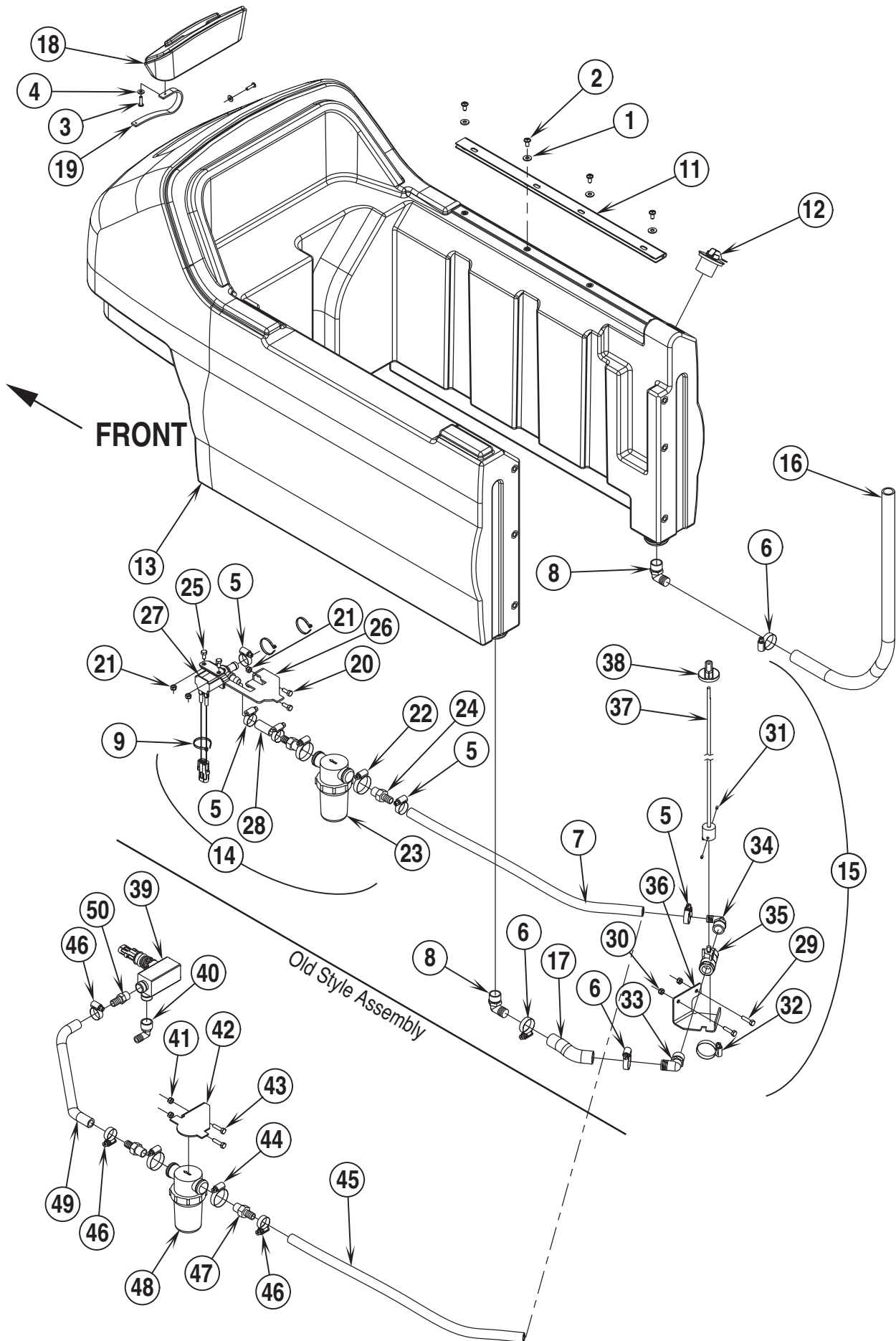
FRONT



00-1	SKIRT ASSY. (CONVERTAMAX 28 / I-MAX 28HD)	BOOK E		
01-6	ConvertaMAX 28 / I-MAX 28HD / BA 750 / BA 850	E	5.9.1	21

Item	Ref. No.	Qty	Description
1	56396099	1	Assembly, Brush Cover, Left (#2-8 / ConvertaMAX™ 28)
2	56002178	2	Scr, Flt Phil 10-24 x .50
3	56002768	2	Nut, Hex Nyl Loc 10-24
4	56003426	4	Nut, Hex Nyl Loc SS M6-1.00
5	56003431	4	Scr, Hex Hd SS M6-1.00 x 16mm
6	56054306	1	Clamp, Toggle Latch
7	56396087	1	Skirt, Bristle, Left
8	56396094	1	Weldment, Brush Cover, Left
9	56396100	1	Assembly, Brush Cover, Right (#10-18 / ConvertaMAX™ 28)
10	56002066	2	Scr, Pan Phil 1/4-20 x .62
11	56002133	1	Scr, Soc Hd 3/8-16 x 2.00
12	56003426	5	Nut, Hex Nyl Loc SS M6-1.00
13	56003431	5	Scr, Hex Hd SS M6-1.00 x 16mm
14	56161691	1	Wheel, Black
15	56056684	1	Spacer, Steel
16	56056701	1	Bracket, Bumper Wheel
17	56396088	1	Skirt, Bristle, Right
18	56396095	1	Weldment, Brush Cover, Right
19	56396129	1	Assembly, Brush Cover, Left (#20-32 / I-MAX™ 28HD)
20	56001993	2	Scr, Pan Phil 10-24 x .50
21	56002133	1	Scr, Soc Hd 3/8-16 x 2.00
22	56002768	2	Nut, Hex Nyl Loc 10-24
23	56003426	4	Nut, Hex Nyl Loc SS M6-1.00
24	56003431	4	Scr, Hex Hd SS M6-1.00 x 16mm
25	56009082	2	Scr, Pan Phil Thd Form-Blk 10-24 x .50
26	56054306	1	Clamp, Toggle Latch
27	56161691	1	Wheel, Black
28	56056684	1	Spacer, Steel
29	56396087	1	Skirt, Bristle, Left
30	56396128	1	Weldment, Brush Cover, Left
31	56396169	1	Strap
32	56396170	1	Bumper
33	56396127	1	Assembly, Brush Cover, Right (#34-43 / I-MAX™ 28HD)
34	56002133	1	Scr, Soc Hd 3/8-16 x 2.00
35	56003426	5	Nut, Hex Nyl Loc SS M6-1.00
36	56003431	5	Scr, Hex Hd SS M6-1.00 x 16mm
37	56009082	2	Scr, Pan Phil Thd Form-Blk 10-24 x .50
38	56161691	1	Wheel, Black
39	56056684	1	Spacer, Steel
40	56396088	1	Skirt, Bristle, Right
41	56396126	1	Weldment, Brush Cover, Right
42	56396169	1	Strap
43	56396170	1	Bumper
**	56396008	1	Rubber Blade Kit (for all models)

** = Optional



00-1	SOLUTION SYSTEM	BOOK E		
01-10	ConvertaMAX 28 / I-MAX 28HD / BA 750 / BA 850	E	5.9.1	23

Item	Ref. No.	Qty	Description
1	56002859	4	Wsh, Flt SAE SS 1/4
2	56003119	4	Scr, Pan Phil SS 1/4-20 x .50
3	56009005	2	Scr, Pan Phil SS Type B 10-16 x .75
4	56009205	2	Wsh, Flt SS #10
5	56219932	5	Clamp, Hose SAE #6
6	56244969	3	Clamp, Hose SAE #12
7	56324249	1	Hose, Spiral .50
8	56456802	2	Barb, 90 Elbow 11/16 x 3/4NPT
9	56478246	3	Tie, Cable
10	56051836	1	Hook (Not Shown)
11	56056514	1	Hinge
12	56057852	1	Plug, Expansion
13	56396024	1	Tank, Solution
14	56396096	1	Assembly, Filter (#5, 20-28) TSB 787
15	56396097	1	Assembly, Ball Valve (#29-38)
16	56396143	1	Hose, .75 Clear PVC
17	56396181	1	Hose, .75 Clear PVC
18	56397021	1	Lid, Solution
19	56397167	1	Strap, Retaining
20	56003174	2	Scr, Hex Thd To Hd M6-1.00 x 16mm
21	56003403	4	Nut, Hex Nyl Loc M6-1.00
22	56131601	2	Clamp, Hose SAE #16
23	56412173	1	Solution Filter
24	56412184	2	Barb, Adapter 1/2 x 1/2NPT
25	56003155	2	Scr, Hex M6-1.00 x 12mm
26	56396068	1	Filter Bracket
27	56397203	1	Solenoid Valve Assembly TSB 787
28	56397217	1	Hose, PVC Clear
29	56003174	2	Scr, Hex Thd To Hd M6-1.00 x 16mm
30	56003403	2	Nut, Hex Nyl Loc M6-1.00
31	56009183	2	Scr, Soc Set Loc 10-24 x .19
32	56131601	1	Clamp, Hose SAE #16
33	56244985	1	Barb, 90 Elbow 3/4 x 1/2NPT
34	56409152	1	Barb, 90 Elbow 1/2 x 1/2NPT
35	56412174	1	Solution Shut-off Valve
36	56396067	1	Valve Bracket
37	56396071	1	Rod Weld't.
38	56396201	1	Knob

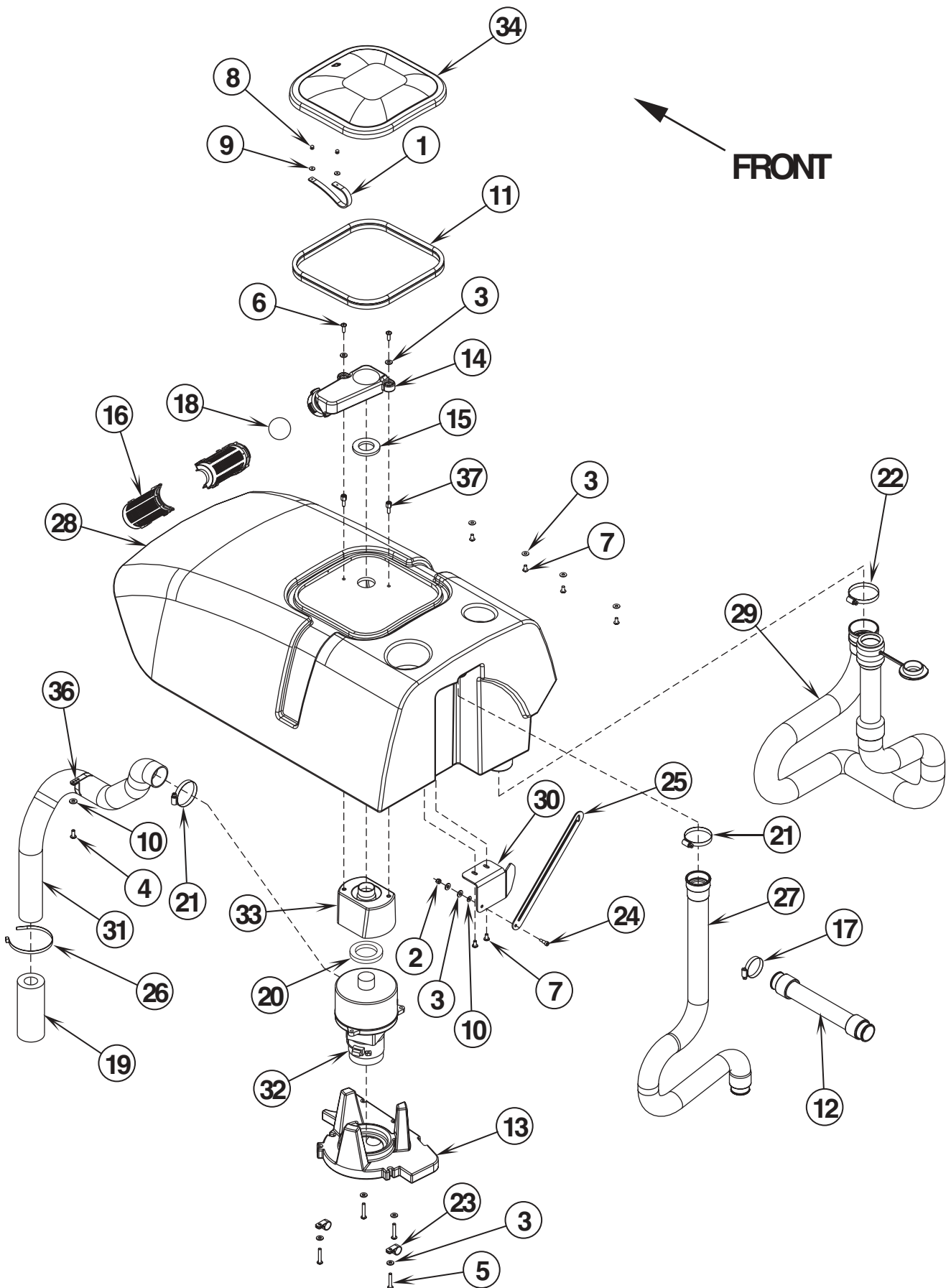
NOTE

39	56412076	1	Solenoid Valve Assembly TSB 787
*	56324506	1	Viton Seal Kit
*	56324507	1	EPDM Seal Kit
40	56900069	1	Barb, 90 Elbow 1/2 x 3/8NPT
41	56003403	2	Nut, Hex Nyl Loc M6-1.00
42	56396068	1	Filter Bracket
43	56003358	2	Scr, Hex M6-1.00 x 25mm
44	56131601	2	Clamp, Hose SAE #16
45	56324249	1	Hose, Spiral .50
46	56219932	4	Clamp, Hose SAE #6
47	56412184	2	Barb, Adapter 1/2 x 1/2NPT
48	56412173	1	Solution Filter
49	56396180	1	Hose, Spiral .50
50	56409507	1	Barb, Adapter 1/2 x 3/8NPT

* = Not Shown

NOTE:

ConvertaMAX 28 / I-MAX 28HD before SN1517776
BA 750 before SN1516328
BA 850 before SN1516334



00-1	RECOVERY SYSTEM	BOOK E		
01-11	ConvertaMAX 28 / I-MAX 28HD / BA 750 / BA 850	E	5.9.1	25

Item	Ref. No.	Qty	Description
1	56397167	1	Strap, Retaining
2	56002768	1	Nut, Hex Nyl Loc 10-24
3	56002859	12	Wsh, Flt SAE SS 1/4
4	56002900	1	Scr, Pan Phil SS 10-24 x .50
5	56002905	4	Scr, Pan Phil SS 1/4-20 x 1.50
6	56003067	2	Scr, Pan Phil SS 1/4-20 x 1.00
7	56003119	6	Scr, Pan Phil SS 1/4-20 x .50
8	56003293	2	Rivet, Pop A/S .125 x .38 / .50
9	56009098	2	Wsh, Flt SS .125 x .50 x .036
10	56009205	2	Wsh, Flt SS #10
11	56397151	1	Gasket
12	56262143	1	Hose Assembly
13	56302141	1	Vac Motor Duct
14	56302142	1	Float Duct
15	56302165	1	Gasket
16	56324497	2	Cage, Float
17	56329145	2	Clamp, Hose SAE #24
18	56391690	1	Ball, Float
19	56391807	1	Foam, Acoustical
20	56397307	1	Gasket, Vac
21	56440213	2	Clamp, Hose SAE #32
22	56456797	1	Clamp, Hose SAE #36
23	56486112	2	Clamp, P
24	56003537	1	Scr, Soc Shd .25 x .38 x 10-24
25	56057508	1	Bar, Steel
26	56477613	1	Tie, Cable
27	56396210	1	Vac Hose Assy (ConvertaMAX™ 28 before SN1402379 / I-MAX™ 28HD before SN1404754) (BA 750 before SN1402428 / BA 850 before SN1431982)
	56396219	1	Vac Hose Assy (ConvertaMAX™ 28 after SN1402378 / I-MAX™ 28HD after SN1404753) (BA 750 after SN1402427 / BA 850 after SN1431981)
28	56396224	1	Tank, Recovery NOTE 1 (ConvertaMAX™ 28 / I-MAX 28HD)
	56396223	1	Tank, Recovery NOTE 2 (BA 750 / BA 850)
29	56396031	1	Drain Hose
30	56396148	1	Bracket, Pivot
31	56397040	1	Hose, Vac Exhaust
32	56397041	1	Vac Motor Assembly
	56397098	1	Carbon Brush Set
33	56397303	1	Spacer, Vac Motor
34	56397045	1	Lid
35			Intentionally Omitted
36	56397095	1	Clamp, Hose
37	56397096	2	Spacer Bolt

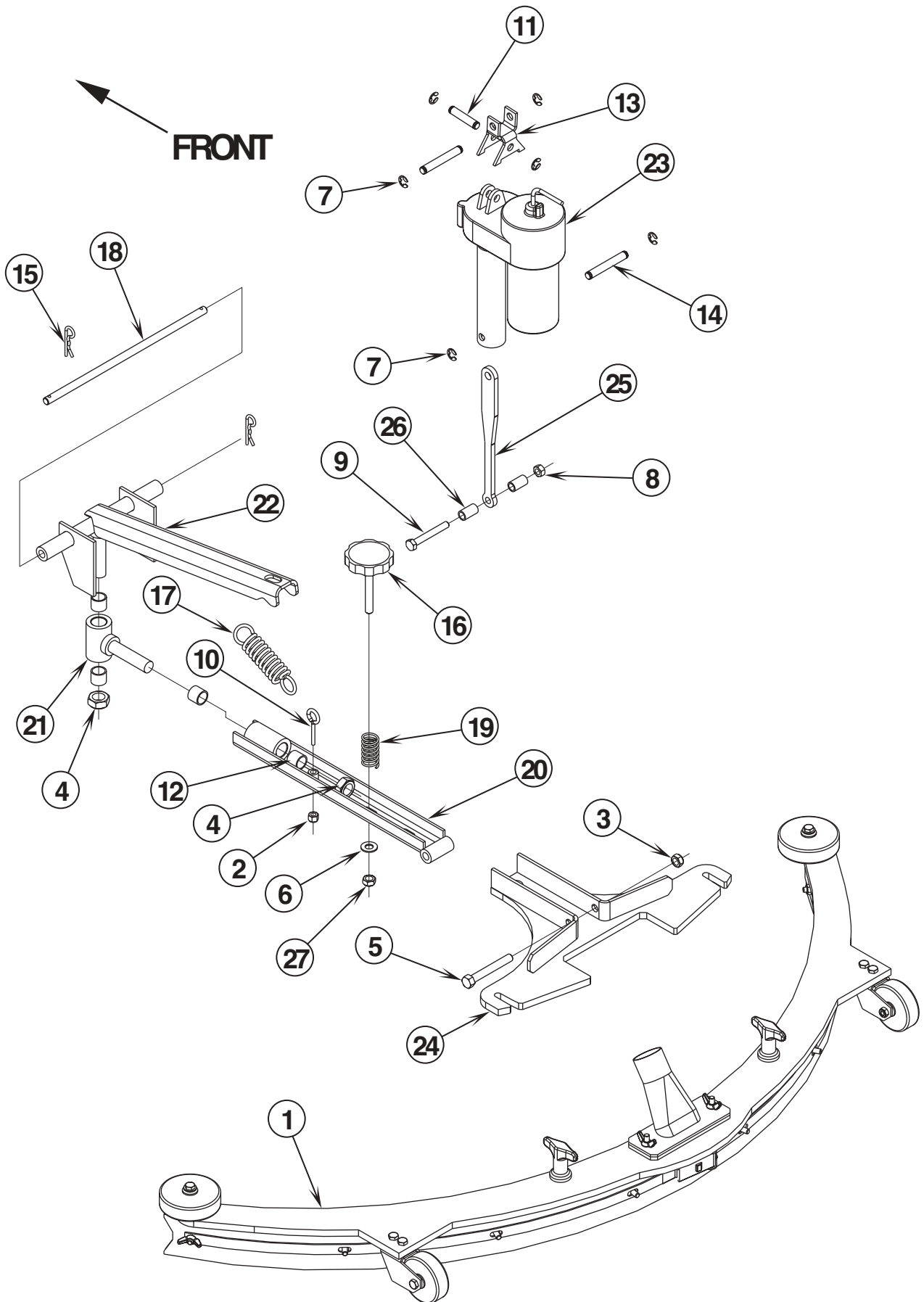
NOTE 1: Recovery Tank **PN 56396224** was implemented at the same time as item 27 Vac Hose Assy. Previous Recovery Tank **PN 56396025** is obsolete. If you have a machine built prior to the serial numbers shown in item 27 and need to replace your recovery tank, order Recovery Tank Kit **PN 56396227** which includes a new Recovery Tank **PN 56396224**, Vac Hose Assy **PN 56396219** and Hose Clamp **PN 56440213**.

NOTE 2: Recovery Tank **PN 56396223** was implemented at the same time as item 27 Vac Hose Assy. Previous Recovery Tank **PN 56396178** is obsolete. If you have a machine built prior to the serial numbers shown in item 27 and need to replace your recovery tank, order Recovery Tank Kit **PN 56396226** which includes a new Recovery Tank **PN 56396223**, Vac Hose Assy **PN 56396219** and Hose Clamp **PN 56440213**.

00-1	SQUEEGEE SYS (all C-MAX 28, I-MAX 28HD, BA 750 / BA 850 before SN 1477842)	BOOK E		
01-6	ConvertaMAX 28 / I-MAX 28HD / BA 750 / BA 850	E	5.9.1	27

Item	Ref. No.	Qty	Description
1	56002708	1	Nut, Hex Nyl Loc 1/4-20
2	56002852	1	Nut, Hex Nyl Loc-Thin SS 3/8-16
3	56002855	2	Nut, Hex Nyl Loc-Thin SS 5/8-11
4	56035163	1	Knob
5	56002903	1	Scr, Hex Hd SS 3/8-16 x 2.75
6			Intentionally Omitted
7	56003120	2	Pin, Cotter Hair
8	56367389	4	Bearing, Sleeve
9	56391281	1	Squeegee Assembly (ConvertaMAX™ 28 / BA 750 / see associated pages)
	56396132	1	Squeegee Assembly (I-MAX™ 28HD / see associated pages)
	56409423	1	Squeegee Assembly (BA 850 / see associated pages)
10	56009220	1	Eye Bolt 1/4-20
11	56051136	1	Spring, Ext.
12	56056585	1	Spring, Comp.
13	56056977	1	Shaft, Steel
14	56396053	1	Weldment, Squeegee Mount (ConvertaMAX™ 28 / I-MAX™ 28HD / BA 750)
	56396065	1	Weldment, Squeegee Mount (BA 850)
15	56396061	1	Weldment, Squeegee Lift
16	56396076	1	Squeegee Bar Weldment
17	56396085	1	Squeegee Pivot Weldment
18	56003262	6	Ring, Ret Ext Type E .38 Dia.
19	56104760	1	Pin
20	56412072	1	Actuator, Motor
*	56470433	1	Carbon Brush Set
*	56393790	2	Limit Switch
21	56412088	2	Pin
22	56002841	1	Nut, Hex Nyl Loc-Thin 3/8-16
23	56392454	1	Yoke, Actuator
24	56002063	1	Wsh, Flt SAE 3/8
25	56396217	1	Kit, Squeegee Lift Link (items 26-29)
26	56396215	1	Link
27	56003464	1	Scr, Hex Hd SS M8-1.25 x 60MM
28	56003405	1	Nut, Hex Nyl Loc SS M8 x 1.25
29	56397286	2	Spacer

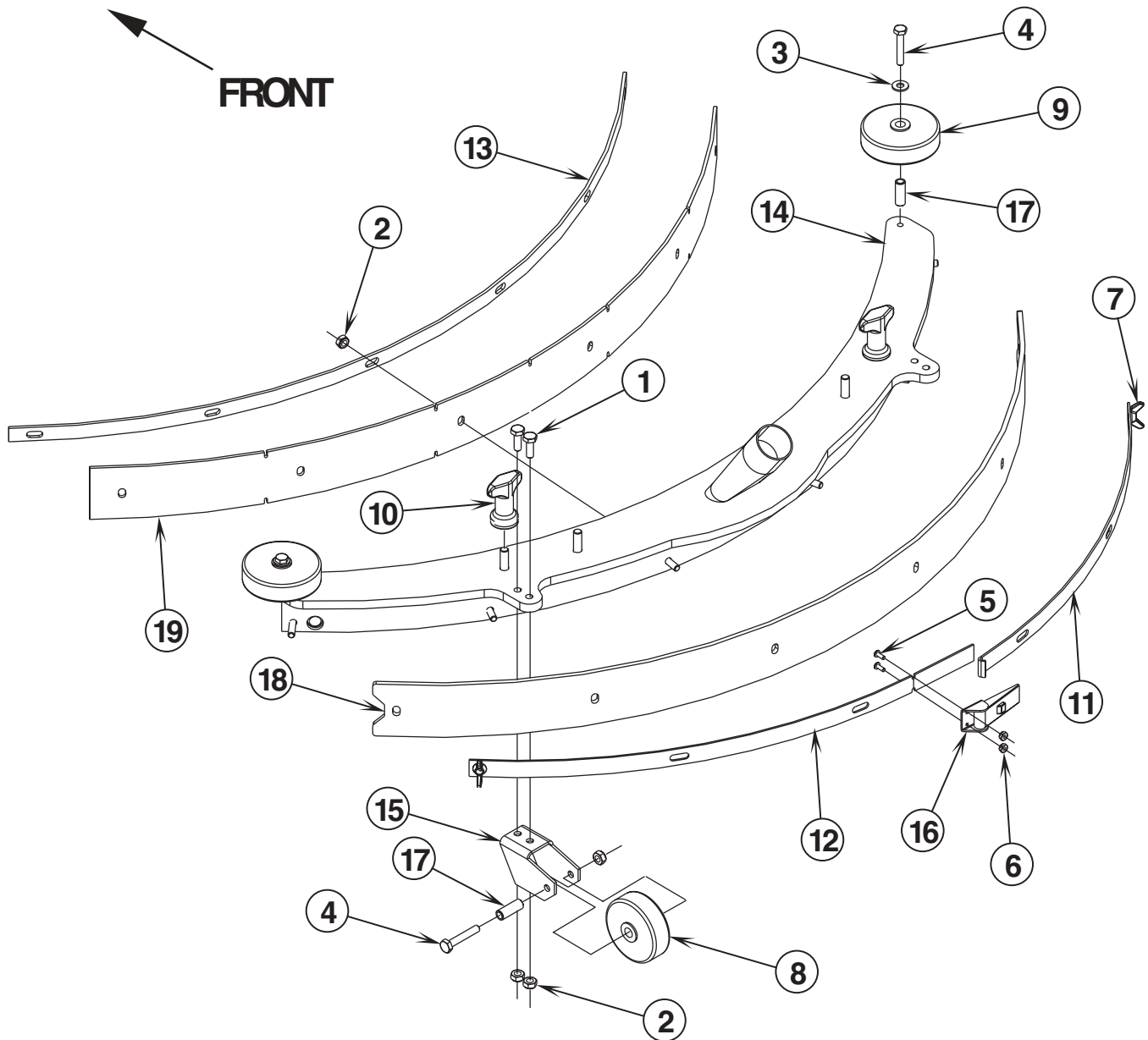
* = Not Shown



00-1	SQUEEGEE SYSTEM (BA 850 after SN 1477841)	BOOK E		
01-6	ConvertaMAX 28 / I-MAX 28HD / BA 750 / BA 850	E	5.9.1	29

Item	Ref. No.	Qty	Description
1	56397349	1	Squeegee Assembly
2	56002708	1	Nut, Hex Nyl Loc 1/4-20
3	56002852	1	Nut, Hex Nyl Loc-Thin SS 3/8-16
4	56002855	2	Nut, Hex Nyl Loc-Thin SS 5/8-11
5	56002903	1	Scr, Hex Hd SS 3/8-16 x 2.75
6	56002063	1	Wsh, Flt SAE 3/8
7	56003262	6	Ring, Ret Ext Type E 0.38 Dia
8	56003405	1	Nut, Hex Nyl Loc SS M8 x 1.25
9	56003464	1	Scr, Hex Hd SS M8-1.25 x 60MM
10	56009220	1	Bolt, Eye 1/4-20 x 1.38
11	56104760	1	Pin
12	56367389	4	Bearing, Sleeve
13	56392454	1	Yoke, Actuator
14	56412088	2	Pin
15	56321406	2	Pin, Cotter Hair
16	56035163	1	Assembly, Knob, Adjustment
17	56051136	1	Spring, Ext
18	56056977	1	Shaft Stl.
19	56056585	1	Compression Spring
20	56396076	1	Squeegee Bar Weld't
21	56396085	1	Squeegee Pivot Weld't
22	56396061	1	Weldment Squeegee Lift-27
23	56412072	1	Actuator, Motor
24	56397356	1	Mounting Plate Weldment
25	56396215	1	Link
26	56397286	2	Spacer
27	56002841	1	Nut, Hex Nyl Loc-Thin 3/8-16

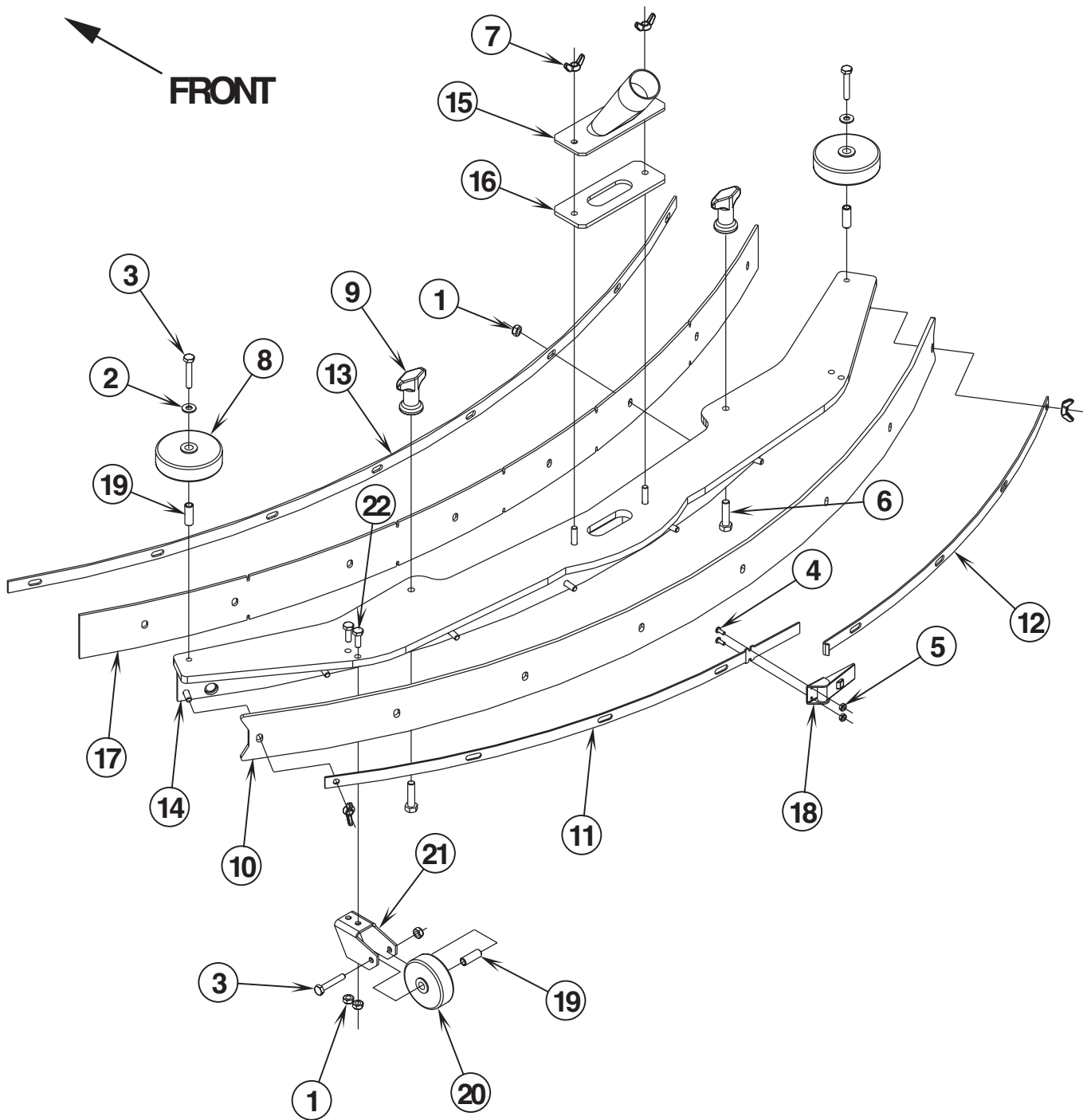
* = Not Shown



00-1	SQUEEGEE ASSY (C-MAX 28 / I-MAX 28HD / BA 750)	BOOK E		
01-6	ConvertaMAX 28 / I-MAX 28HD / BA 750 / BA 850	E	5.9.1	31

Item	Ref. No.	Qty	Description
1	56002807	4	Scr, Hex Hd SS 1/4-20 x .75
2	56002850	12	Nut, Hex Nyl Loc-Thin SS 1/4-20
3	56002859	2	Wsh, Flt SAE SS 1/4
4	56002901	4	Scr, Hex Hd SS 1/4-20 x 1.50
5	56002909	2	Scr, Pan Phil SS 6-32 x .38
6	56002964	2	Nut, Hex Nyl Loc-Thin SS 6-32
7	56009048	2	Nut, Wing Loc 1/4-20
8	56324350	2	Wheel
9	56324499	2	Wheel 3.00
10	56370711	2	Nut, Thumb
11	56391286	1	Strap, Rear Right
12	56391288	1	Strap, Rear Left
13	56391290	1	Strap, Front
14	56391292	1	Tool Weldment
15	56409656	2	Bracket, Wheel
16	56471194	1	Latch
17	56471220	4	Bushing, .25 x .37 x 1.00
18	56391333	1	Blade, Rear (ConvertaMAX™ 28 / BA 750)
	56396130	1	Blade, Rear (I-MAX™ 28HD)
19	56391334	1	Blade, Front (ConvertaMAX™ 28 / BA 750)
	56396131	1	Blade, Front (I-MAX™ 28HD)
**	56391340	1	Standard Blade Kit (Gum Rubber)
**	56391342	1	Oil Resistant Blade Kit (Neoprene)
**	56396172	1	Linatex Blade Kit
**	56397325	1	Blade, Front-Tile Gum
**	56397326	1	Blade, Front-Tile Linatex

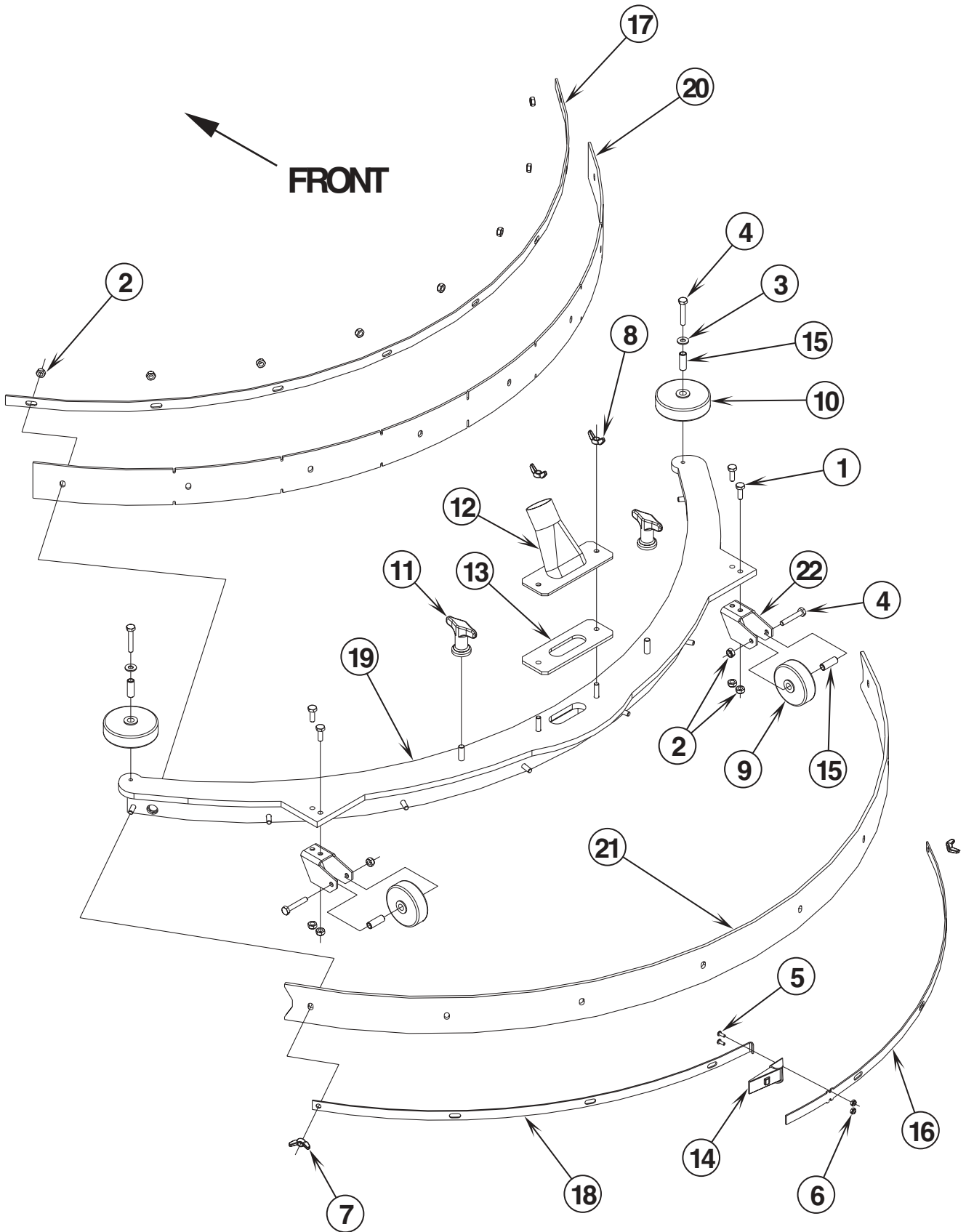
** = Optional



00-1	BA 850 SQUEEGEE ASSY. (before SN 1477842)	BOOK E		
01-6	ConvertaMAX 28 / I-MAX 28HD / BA 750 / BA 850	E	5.9.1	33

Item	Ref. No.	Qty	Description
1	56002850	14	Nut, Hex Nyl Loc-Thin SS 1/4-20
2	56002859	2	Wsh, Flt SAE SS 1/4
3	56002901	4	Scr, Hex Hd SS 1/4-20 x 1.50
4	56002909	2	Scr, Pan Phil SS 6-32 x .38
5	56002964	2	Nut, Hex Nyl Loc-Thin SS 6-32
6	56003302	2	Scr, Hex Thd To Hd SS 5/16-18 x 2.75
7	56009111	4	Nut, Wing SS 1/4-20
8	56324499	2	Wheel 3.00
9	56370711	2	Nut, Thumb
10	56409413	1	Blade, Rear
11	56409415	1	Strap, Rear Left
12	56409416	1	Strap, Rear Right
13	56409417	1	Strap, Front
14	56409422	1	Tool Weldment
15	56409425	1	Tube Weldment
16	56409426	1	Gasket
17	56409627	1	Blade, Front
18	56471194	1	Latch
19	56471220	4	Bushing
20	56324350	2	Wheel
21	56409421	2	Bracket, Wheel
22	56002807	4	Scr, Hex Hd SS 1/4-20 x .75
**	56409429	1	Standard Blade Kit (Gum Rubber)
**	56409430	1	Oil Resistant Blade Kit (Neoprene)
**	56396173	1	Linatex Blade Kit
**	56397327	1	Blade, Front-Tile Gum
**	56397328	1	Blade, Front-Tile Linatex

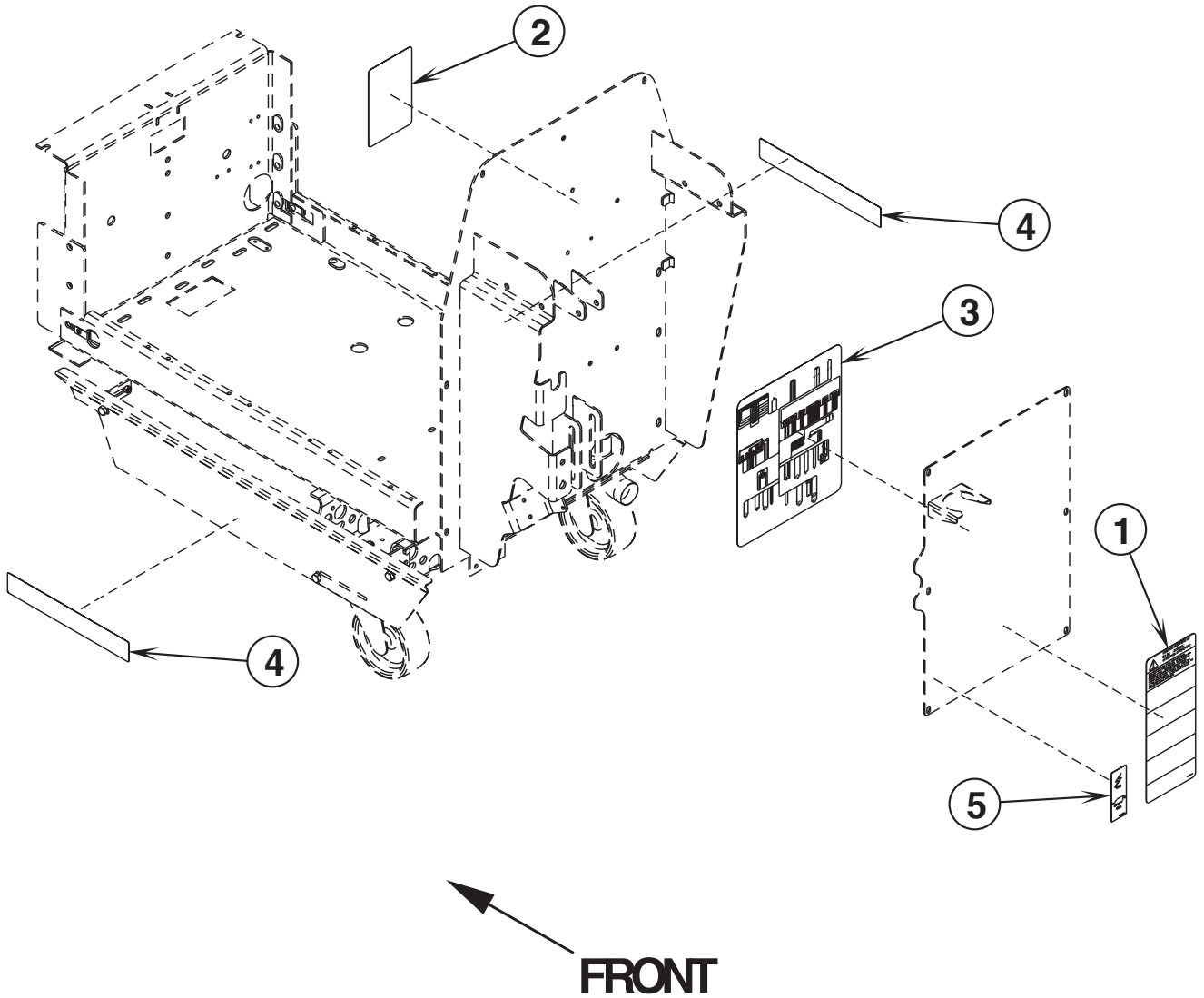
** = Optional



00-1	BA 850 SQUEEGEE ASSY. (after SN 1477841)	BOOK E		
02-3	ConvertaMAX 28 / I-MAX 28HD / BA 750 / BA 850	E	5.9.1	35

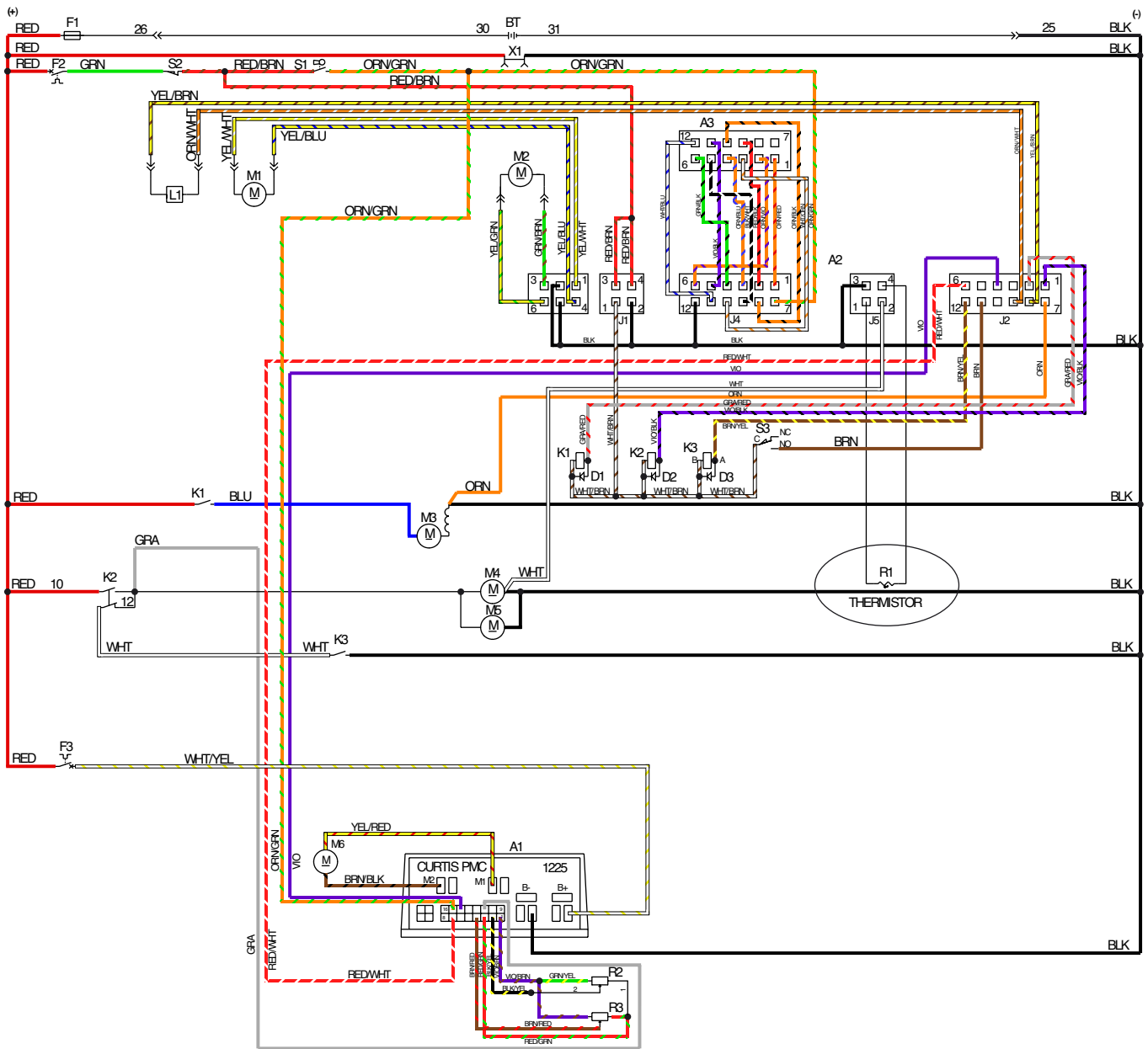
Item	Ref. No.	Qty	Description
1	56002807	4	Scr, Hex Hd SS 1/4-20 x .75
2	56002850	14	Nut, Hex Nyl Loc-Thin SS 1/4-20
3	56002859	2	Wsh, Flt SAE SS 1/4
4	56002901	4	Scr, Hex Hd SS 1/4-20 x 1.50
5	56002909	2	Scr, Pan Phil SS 6-32 x .38
6	56002964	2	Nut, Hex Nyl Loc-Thin SS 6-32
7	56009048	2	Nut, Wing Loc 1/4-20
8	56009111	2	Nut, Wing SS 1/4-20
9	56324350	2	Wheel
10	56324499	2	Wheel 3.00
11	56370711	2	Nut, Thumb
12	56409425	1	Tube Weldment
13	56409426	1	Gasket
14	56471194	1	Latch Assembly
15	56471220	4	Bushing .25 x .37 x 1.0
16	56397353	1	Strap, Rear
17	56397354	1	Strap, Front
18	56397355	1	Strap, Rear
19	56397359	1	Squeegee Tool Weldment
20	56397362	1	Blade, Front
21	56397363	1	Blade, Rear
22	56409656	2	Bracket, Wheel
**	56397094	1	Blade Kit Gum (contains one 56397363 & 56397362)
**	56397106	1	Blade Kit Linatex (contains one 56397091 & 56397089)
**	56397147	1	Blade, Front-Tile Gum
**	56397148	1	Blade, Front-Tile Linatex
**	56397595	1	Blade Kit - Oil Resistance

** = Optional



00-1	DECAL SYSTEM	BOOK E		
01-6	ConvertaMAX 28 / I-MAX 28HD / BA 750 / BA 850	E	5.9.1	37

Item	Ref. No.	Qty	Description
1	56014601	1	Decal, Caution
2	56016486	1	Decal, Battery Wiring
3	56016487	1	Decal, Electrical Schematic
4	56016488	2	Decal, ConvertaMAX 28 (ConvertaMAX™ 28)
	56016489	2	Decal, I-MAX 28HD (I-MAX™ 28HD)
	56016490	2	Decal, BA750 (BA750)
	56016491	2	Decal, BA850 (BA850)
5	56016666	1	Decal, Circuit Breaker



00-1	ELECTRICAL DIAGRAM	BOOK E		
01-11	ConvertaMAX 28 / I-MAX 28HD / BA 750 / BA 850	E	5.9.1	39

Item	Ref. No.	Qty	Description	Item	Ref. No.	Qty	Description
A1	56396185	1	Controller, 24V	X1	56396187	1	Charge Connector Assy
A2	56396156	1	Control Assy NOTE #1 / TSB 793	10	56396194	1	Cable Assembly 4 AWG
	56396009	1	Control Assy NOTE #2 / TSB 793	12	56396193	1	Cable Assembly 4 AWG
A3	56396161	1	Display Panel Assembly	*	56396192	1	Harness, Handle Wiring TSB 737
BT	N/A		Battery (24V system)	*	56396183	1	Harness, Main Wiring
D1	56389265	1	Diode	*	56372673	8	Boot, Battery Post
D2	56389265	1	Diode	*	56416445	3	Cable Assembly (Battery Cables)
D3		1	Diode	*	56398090	8	Terminal Clamp Battery
F1	56412089	1	Fuse, 150 Amp	*	56396203	1	Connector Assembly (Connected to Machine)
F2	56387316	1	Circuit Breaker 10 Amp (Control Circuit)	25	56448770	29"	Cable, BLK
F3	56452193	1	Circuit Breaker 40 Amp (Wheel Drive)	26	56900811	26"	Cable, RED
K1	56412179	1	Contactor, 24 VDC (Vac Motor)	*	56100621	1	Connector Housing
K2	56397088	1	Contactor, 24V, SPDT (Brush Motor)	*	56100686	2	#1 Contact
K3	56396038	1	Relay, SPST, 24V (Brush Remove) TSB 776	*	56420052	2	Terminal Ring
L1	56412076	1	Solenoid Valve NOTE #1 / TSB 787	*	56396202	1	Connector Assembly (Connect to Batteries)
*	56324506	1	Viton Seal Kit	30	56900811	31"	Cable, RED
*	56324507	1	EPDM Seal Kit	31	56448770	31"	Cable, BLK
	56397203	1	Solenoid Valve NOTE #2 / TSB 787	*	56100621	1	Connector Housing
M1	56393303	1	Actuator, Motor (Brush Lift)	*	56100685	2	#1 Contact
*	56470433	1	Carbon Brush Set	*	56478617	2	Terminal Ring
*	56393790	2	Limit Switch	* = Not Shown			
*	56388520	1	Plastic Drive Nut				
M2	56412072	1	Actuator, Motor (Squeegee Lift)				
*	56470433	1	Carbon Brush Set				
*	56393790	2	Limit Switch				
M3	56397041	1	Vac Motor Assembly				
*	56397098	1	Carbon Brush Set				
M4	56027153	1	Motor and Gear Unit, 24V (3/4 HP) (ConvertaMAX™ 28 / BA 750 / BA 850)				
	56397079	1	Motor and Gear Unit, 24V (1 HP) (I-MAX™ 28HD)				
M5	56027153	1	Motor and Gear Unit, 24V (3/4 HP) (ConvertaMAX™ 28 / BA 750 / BA 850)				
	56397079	1	Motor and Gear Unit, 24V (1 HP) (I-MAX™ 28HD)				
M6	56396209	1	Motor and Gear Unit, 24V (Wheel Drive)				
R1		1	Thermistor (part of Cable Assy 56396184)				
R2	56396197	1	Potentiometer, 100K (Speed Control)				
R3	56397029	1	Potentiometer, 5K (Forward / Reverse)				
S1	56396188	1	Switch, Key				
S2	56462362	1	Switch (Charger Interlock)				
S3	56263174	1	Switch, Snap SPDT (Squeegee Reverse)				

NOTE #1:

ConvertaMAX 28 / I-MAX 28HD before SN1517776

BA 750 before SN1516328

BA 850 before SN1516334

NOTE #2:

ConvertaMAX 28 / I-MAX 28HD after SN1517775

BA 750 after SN1516327

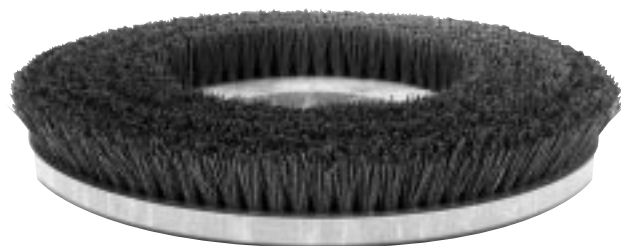
BA 850 after SN1516333

We manufacture brushes and pad holders that will give you the best possible performance between machine and floor. Following are descriptions of the materials and their applications when used on the BA750 / BA850.

- Union Mix:** Medium grade natural fibers for polishing finished floors with standard-speed equipment. Recommended for use in place of white pads.
- ProLite:** Bristles are made from light-duty polypropylene for general scrubbing when you do not want to scratch or remove finish from the floor. Recommended for use in place of red pads.
- Prolene:** Polypropylene material for medium-duty scrubbing on concrete, terrazzo and vinyl floor tile. Recommended for use in place of green or blue pads.
- Magna Grit:** For extreme heavy-duty scrubbing or stripping of floors. This brush has extra large diameter silicon carbide grit impregnated synthetic bristles. Recommended for use in place of black pads.
- Dyna Grit:** For aggressive, heavy-duty scrubbing or stripping of floors. Recommended for use in place of brown pads.
- MidLite Grit:** For general purpose scrubbing of sealed or unsealed concrete, stone, terrazzo, quarry tile and other resilient hard floor surfaces. Recommended for use in place of green or blue pads.
- MidGrit:** For general purpose scrubbing when you need a lighter action for sealed or unsealed concrete, stone, terrazzo, quarry tile and other resilient hard floor surfaces. Recommended for use in place of green or blue pads.
- AgLite Grit:** For light scrubbing when used wet; buffing or polishing when used dry on urethane coated, sealed concrete or other resilient hard surface floors. Recommended for use in place of red or white pads.
- Short Trim Pad Holder:** Made with a structural foam block and center ring for correct pad centering. It has a "shower feed" design for getting solution to the floor.

- Ref. No.:** **BA750 BRUSHES**
 56505770 - Pad Holder
 56505771 - Magna Grit
 56505772 - Dyna Grit
 56505773 - AgLite Grit
 56505774 - Prolene
 56505775 - ProLite
 56505776 - Union Mix
 56505777 - Mid Grit
 56505778 - MidLite Grit

- Ref. No.:** **BA850 BRUSHES**
 56505780 - Pad Holder
 56505781 - Magna Grit
 56505782 - Dyna Grit
 56505783 - AgLite Grit
 56505784 - Prolene
 56505785 - ProLite
 56505786 - Union Mix
 56505787 - Mid Grit
 56505788 - MidLite Grit



DANMARK

Nilfisk-Advance Nordic A/S
Sognevej 25 - Box 344
DK-2605 Broendby
☎ 43 23 83 50 – Fax 43 42 15 95

NORGE

Nilfisk-Advance AS
Enebakkvn, 119, 0680 Oslo, Postboks 196, Manglerud,
0612 Oslo
☎ 22 08 63 50 – Fax 22 08 63 63
Distriktsrepresentanter over hele landet

SVERIGE

Nilfisk-Advance AB
Sjöbjörnsvägen 5, 117 67 Stockholm
☎ 085 55 944 00 – Fax 085 55 944 30

FINLAND/ SUOMI

BERNER Ltd. Facotek Department
Etäläranta 4B, 00130 Helsinki
☎ +358 9 1345 1382

AUSTRALIA

Nilfisk-Advance Pty. Ltd.
ACN 003 762 623
Head office: 17 Leeds Street, Rhodes, N. S. W. 2138
☎ (02) 9736 1244 – Fax (02) 9736 3910
Customer Responce Centre:
☎ 1 800 011 013

BELGIQUE / BELGIË/ LUXEMBOURG

Nilfisk-Advance s.a./n.v.
Doornveld/ Sphere Business Park
Industrie Asse 3, nr 11 – bus 41
1731 Zellik-Asse
☎ (02) 467.60.50 Fax (02) 463.44.16

CANADA

Nilfisk-Advance Ltd.
396 Watline Avenue
Mississauga, Ontario L4Z 1X
☎ (905) 712-3260 – Fax (905) 712-3255

DEUTSCHLAND

Nilfisk-Advance AG
Siemensstraße 25-27
25462 Rellingen
☎ (041 01) 3990 – Fax (04101) 399191
Zentraler Kundenservice
☎ für die Industrie: 0180 535 67 97
☎ Institutionen und Gebäudereiniger: 0180 500 11 70

FRANCE

Nilfisk-Advance S.A.
BP 246
91944 Courtaboeuf Cedex
☎ (01) 69.59.87.00 Télécopie (01) 69.59.87.01

HONG KONG

Nilfisk-Advance Ltd.
2001, 20/F HK Worsted Mills
Industrial Building
31-39 Wo Tong Tsui Street
Kwai Chung, N.T.
☎ 2427 59 51 – Fax 2487 5828

IRELAND

Nilfisk-Advance Ltd.
28 Sandyford Office Park
Dublin 18
☎ +353 1 2943838 – Fax +353 1 2943845

JAPAN

Nilfisk-Advance Inc.
3-4-9 Chigasaki Minami
Tsuzuki-Ku Yokohama 224
☎ 045-942-7741 – Fax 045-942-6545

MALAYSIA

Nilfisk-Advance Sdn Bhd
Lot 2, 1st. Floor
Lorong 19/1A
46300 Petaling Jaya
Selangor Darul Ehsan
☎ 03-7568188 /03-7568189 /03-7568388 – Fax 03-7566828

NEDERLAND

Nilfisk-Advance B.V.
Flevolaan 7, Postbus 341
1380 AH Weesp
☎ 0294-462121 – Fax 0294-430053

NEW ZEALAND

Nilfisk-Advance Limited
477 Great South Road, Penrose
Auckland
☎ (09) 525 0092 – Fax (09) 525 6440

SCHWEIZ / SUISSE

Nilfisk-Advance AG
Ringstrasse 19, 9533 Kirchberg/Wil
☎ 719 23 52 83 – Fax 719 23 84 44

SINGAPORE

Nilisk-Advance Pte. Ltd.
22, Woodlands Industrial Park E1
Singapore 757740
☎ (65) 759 9100 – Fax (65) 759 9133

TAIWAN

Nilfisk-Advance Ltd.
1 F, No.23, Lane 132, Sec. 2
Ta An Road, Taipei
☎ 700 22 68 – Fax 784 08 43

UNITED KINGDOM

Nilfisk-Advance Limited
Newmarket Road
Bury St. Edmunds
Suffolk IP 33 3SR
☎ (01284) 763163 – Fax (01284) 750562

USA

Nilfisk-Advance Inc.
14600 21st Avenue North
Plymouth, MN 55447-3408
☎ +1 800 989 2235 – Fax 1 800 989 6566

Nilfisk-Advance of America, Inc.

300 Technology Drive
Malvern, PA 19355
☎ (610) 647 647-6427

ÖSTERREICH

Nilfisk-Advance GmbH
Vorarlberg Allee 46
1230 Wien
☎ 1 616 58 30 – Fax 1 616 58 30 40

ESPAÑA

Nilfisk-Advance, S.A.
Torre D'Ara
Passeig del Rengle, 5 Pl.9-10
E-08302 – Mataró (Barcelona)
☎ Tel. 93 741 24 00 – Fax: 93 757 80 20
Central atención al cliente: 902 200 201
nilfisk@nilfisk-advance.es – www.nilfisk-advance.com
Distribuidores y Servicio Técnico en toda España y Andorra

ITALIA

Nilfisk-Advance Italia Spa
Località Novella Terza
26862 Guardamiglio (LO)
Italy
☎ +39 0377 414067-54 – Fax +39 0377 414097
www.nilfisk-advance.com

PORTUGAL

Nilfisk-Advance Lda.
Rua Cândido de Figueiredo, 91-i, 1500-133 LISBOA
☎ 01/7784142 – Fax 01/7785613
Porto 02/526766 – Fax 02/520739
Açores 096/628092/3 – Fax 096/628129
Madeira 091/228965 – Fax 091/228796

GREECE

Embiom S.A.
Λεωφ. Βουλιαγμένης 60
Αργυρούπολη
164 52 Αθήνα
☎ 9950613 - Fax 9951680



**Nilfisk
Advance**
setting standards

Material composition of the Nilfisk BA750/850

