



Electronic Service Manuals

This electronic document is provided as a service to our customers. We do not create the contents of the information contained in this document. Should you have detailed questions pertaining to the information contained in this document, you may contact Michco, or the manufacturer which provided the original information in this electronic deliverable. Michco's only part in this electronic deliverable was the electronic assembly process.

You may contact Michco through the following methods:
Phone (517) 484-9312 or (800) 331-3339 MI, OH, IN only
2011 N. High St. -- Lansing, Michigan -- 48906
Fax: (517) 484-9836
Email: CustServ@Michco.com
Web site: www.Michco.Com
Parts Web site: www.FloorMachineParts.Com

Order Parts on Line at:
www.FloorMachineParts.Com

Directly to Parts & Service:
By Email: **Shop@Michco.com**
By Fax: (517) 702-2041
By Voice: Use numbers above.

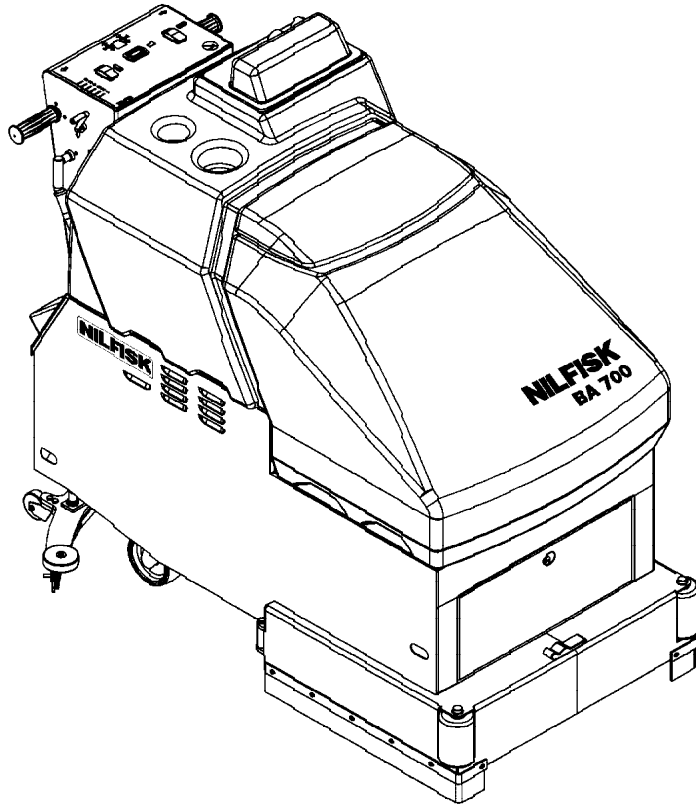
Serving the Cleaning Industry Since 1922

Notice: All copyrighted material remains property of original owners, all trademarks are property of respective owners. Manuals are subject to Manufacturer's reproduction limitations. Originals or reproductions were provided by manufacturers through a request. We make no warranty as to the correctness of information provided in this document and you assume all risk.

Convertamatic™ 28LX

Hydro-Retriever™ 280HD

BA 700



PARTS LIST

Advance MODELS 56392290(28LX), 56392230(280HD)

Nilfisk MODEL 56391372

All models covered in this manual are Obsolete.



**Nilfisk
Advance**

setting standards

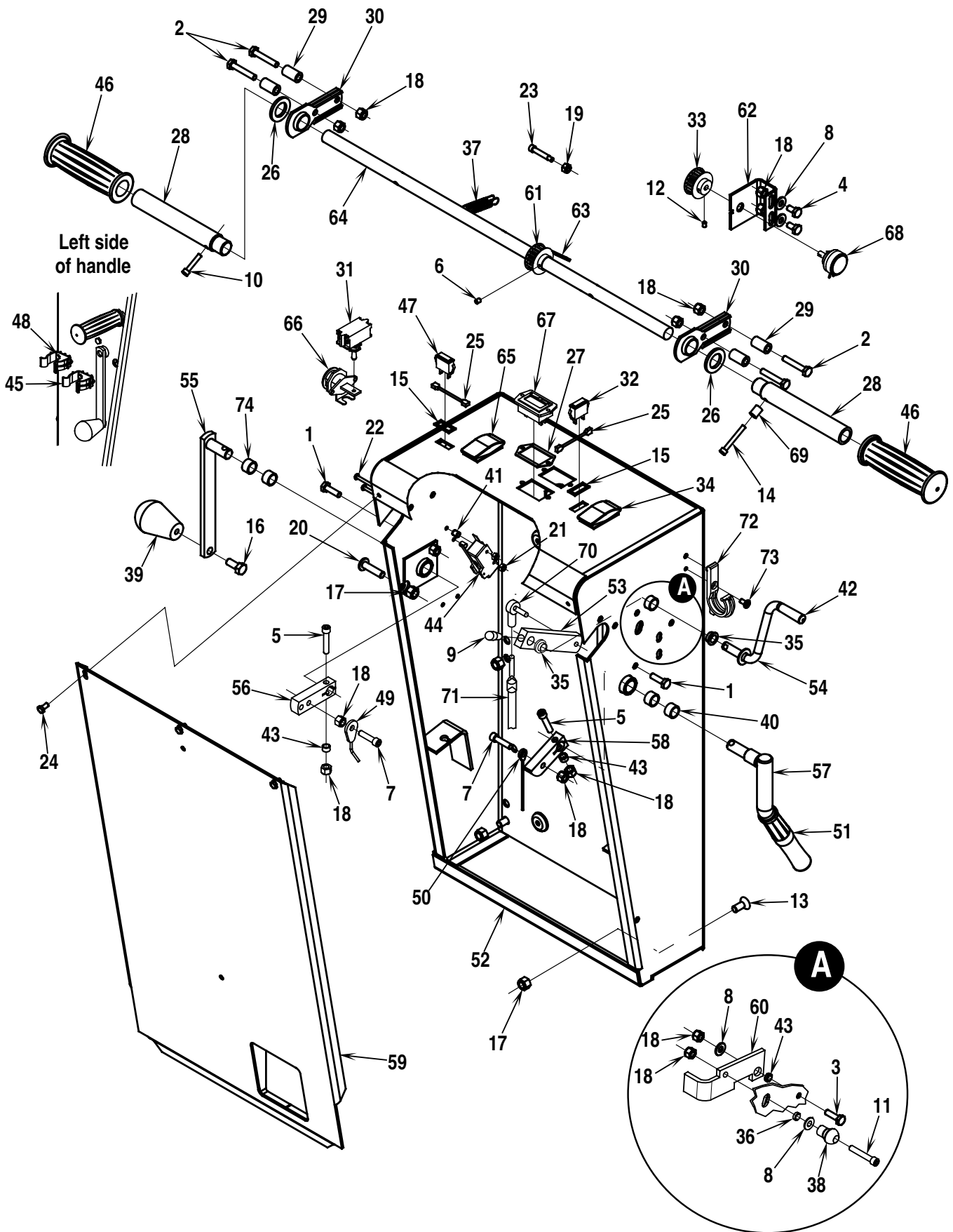
revised 11/01 FORM NO. 56042294
BOOK E SECTION 5.6.1

| DESCRIPTION | PLAN |
|--|------------|
| CONTROL HANDLE SYSTEM | E-5.6.1-3 |
| ELECTRICAL PANEL-1 | E-5.6.1-5 |
| ELECTRICAL PANEL-2 | E-5.6.1-7 |
| CHASSIS SYSTEM | E-5.6.1-9 |
| SKIRT SYSTEM | E-5.6.1-11 |
| VACUUM MOTOR SYSTEM | E-5.6.1-13 |
| DRIVE SYSTEM | E-5.6.1-15 |
| BRUSH LIFT SYSTEM | E-5.6.1-17 |
| GEARCASE (BRUSH DRIVE SYSTEM) | E-5.6.1-19 |
| SCRUB BRUSHES | E-5.6.1-19 |
| BRUSH DRIVE MOTOR (BRUSH DRIVE SYSTEM) | E-5.6.1-21 |
| RECOVERY TANK SYSTEM | E-5.6.1-23 |
| SOLUTION SYSTEM | E-5.6.1-25 |
| SQUEEGEE MOUNT ASSEMBLY-1 | E-5.6.1-27 |
| SQUEEGEE MOUNT ASSEMBLY-2 | E-5.6.1-29 |
| SQUEEGEE ASSEMBLY-1 | E-5.6.1-31 |
| SQUEEGEE ASSEMBLY-2 | E-5.6.1-33 |
| DECAL SYSTEM (Advance) | E-5.6.1-35 |
| DECAL SYSTEM (Nilfisk) | E-5.6.1-37 |
| ELECTRICAL SYSTEM-1 | E-5.6.1-39 |
| ELECTRICAL SYSTEM-2 | E-5.6.1-41 |
| WIRING DIAGRAM-1 | E-5.6.1-43 |
| WIRING DIAGRAM-2 | E-5.6.1-45 |
| WIRING DIAGRAM-3 | E-5.6.1-47 |
| BRUSH / DISC SELECTOR GUIDE | E-5.6.1-48 |

WHEN ORDERING PARTS

- * Use the 8 digit numbers from the "Ref. No." columns in this parts list.
- * Specify the model and serial number of the machine.
- * Use the space below to record the model and serial number for future reference.

Model _____ Serial No. _____

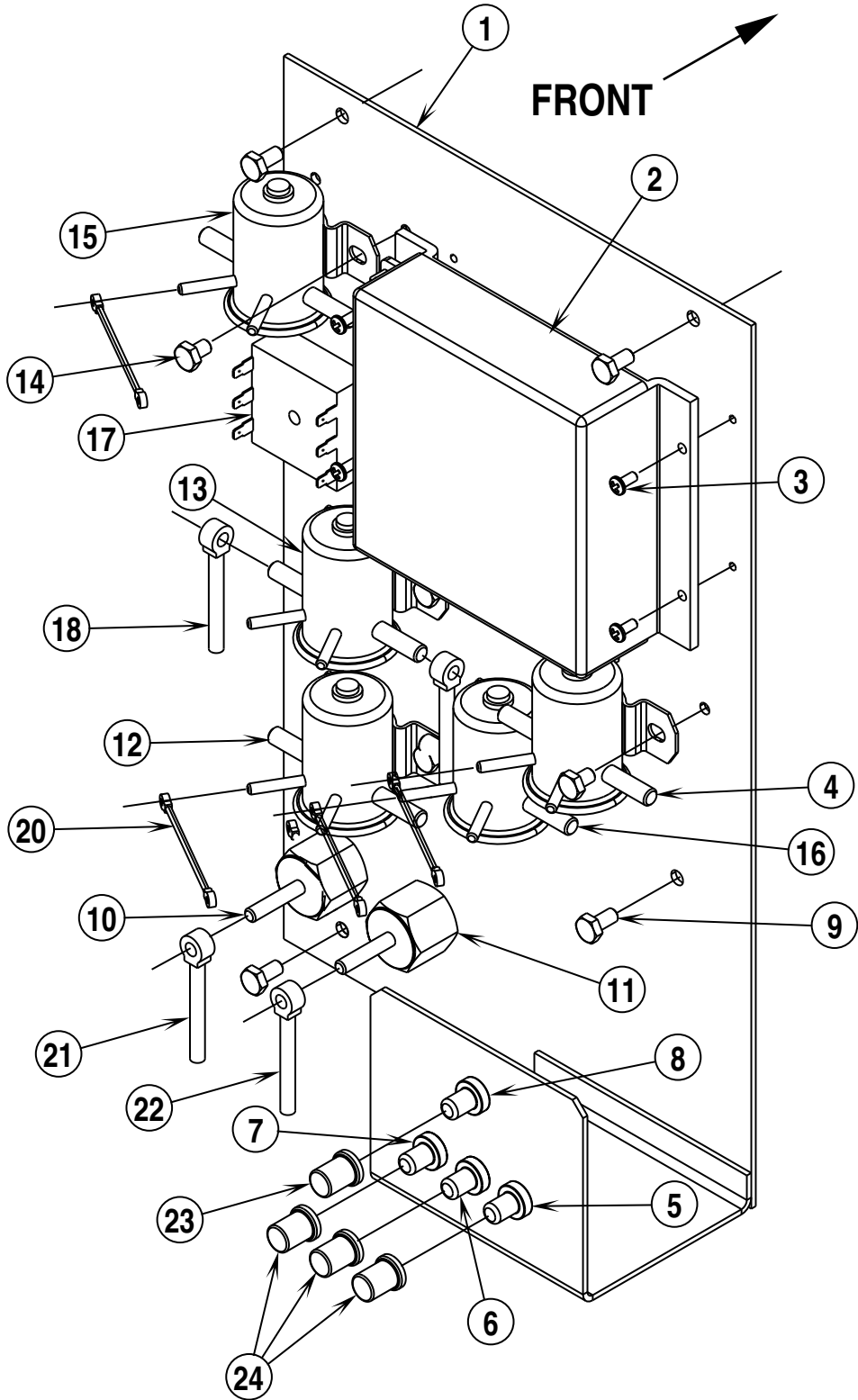


| | | | | |
|-------|------------------------------|---------------|--------------|----------|
| 95-4 | CONTROL HANDLE SYSTEM | BOOK E | | |
| 00-12 | 28LX / 280HD / BA 700 | E | 5.6.1 | 3 |

| Item | Ref. No. | Qty | Description | Item | Ref. No. | Qty | Description |
|------|----------|-----|---|------|----------|-----|--|
| 1 | 56001821 | 2 | Scr, Hex Hd 1/4-20 x .88 | 47 | 56389434 | 1 | Light, Indicator Green (Power ON) |
| 2 | 56001833 | 4 | Scr, Hex Hd 1/4-20 x 1.50 | 48 | 56009135 | 4 | Scr, Thd Form 10-24 x .62 |
| 3 | 56001836 | 1 | Scr, Hex Hd 1/4-20 x .62 | 49 | 56391305 | 1 | Cable Assembly (Squeegee) |
| 4 | 56001854 | 2 | Scr, Hex Hd 1/4-20 x .50 | | | | |
| 5 | 56001961 | 2 | Scr, Soc Hd 1/4-20 x 1.25 | 50 | 56391306 | 1 | Cable Assembly (Brake) |
| 6 | 56002015 | 2 | Scr, Soc Set Loc 10-24 x .25 | 51 | 56391311 | 1 | Grip, Handle |
| 7 | 56002034 | 2 | Scr, Soc Hd 1/4-20 x 1.00 | 52 | 56391383 | 1 | Control Panel Weld't |
| 8 | 56002098 | 4 | Wsh, Flt SAE 1/4 | 53 | 56391494 | 1 | Lever |
| 9 | 56002115 | 1 | Scr, Soc Hd 1/4-20 x .50 | 54 | 56391495 | 1 | Lever Weld't (Solution Valve) |
| 10 | 56002179 | 1 | Scr, Soc Hd 10-24 x 1.00 | | | | |
| 11 | 56002242 | 1 | Scr, Soc Hd 1/4-20 x 1.50 | 55 | 56324631 | 1 | Lever Weld't (Squeegee) |
| 12 | 56002279 | 2 | Scr, Soc Set Loc 8-32 x .25 | 56 | 56324632 | 1 | Lever |
| 13 | 56002395 | 4 | Scr, Flt Phil 5/16-18 x .75 | 57 | 56391501 | 1 | Brake Lever Weld't (before SN 1209360) |
| 14 | 56002454 | 1 | Scr, Soc Hd 10-24 x 1.50 | | | | |
| 15 | 56324363 | 2 | Gasket | | 56392244 | 1 | Brake Lever Weld't (after SN 1209359) |
| 16 | 56002667 | 1 | Scr, Hex Hd 5/16-18 x .75 | | | | |
| 17 | 56002701 | 5 | Nut, Hex Nyl Loc 5/16-18 | 58 | 56391504 | 1 | Lever (before SN 1209360) |
| 18 | 56002708 | 14 | Nut, Hex Nyl Loc 1/4-20 | | 56392242 | 1 | Lever (after SN 1209359) |
| 19 | 56002768 | 2 | Nut, Hex Nyl Loc 10-24 | 59 | 56392078 | 1 | Cover Weld't |
| 20 | 56002795 | 1 | Scr, Pan Phil 5/16-18 x 1.25 | 60 | 56392091 | 1 | Parking Brake Catch Lever |
| 21 | 56002830 | 2 | Nut, Hex Nyl Loc 6-32 | 61 | 56392859 | 1 | Pulley, Cog |
| 22 | 56003049 | 2 | Scr, Pan Phil 6-32 x 1.25 | 62 | 56392718 | 1 | Bracket, Potentiometer |
| 23 | 56003214 | 2 | Scr, Soc Shd .25 x 1.25 x 10-24 | 63 | 56392721 | 1 | Belt, Timing |
| 24 | 56009012 | 3 | Scr, Hex Thd Form 10-24 x .38 | 64 | 56392733 | 1 | Tube Weld't |
| 25 | 56389453 | 2 | Resistor Assembly | 65 | 56393312 | 1 | Switch, Rocker (Brush) |
| 26 | 56009022 | 2 | Wsh, Flt .75 x 1.25 x .12 | 66 | 56393325 | 1 | Bracket, Keylock |
| 27 | 56392845 | 1 | Gasket | * | 56301636 | 1 | Toggle Switch |
| 28 | 56261064 | 2 | Tube | * | 56393415 | 1 | Replacement Key |
| 29 | 56261066 | 4 | Bushing | 67 | 56393717 | 1 | Fuel Guage, Battery |
| 30 | 56261097 | 2 | Bearing | 68 | 56454740 | 1 | Potentiometer, 5K |
| 31 | 56301636 | 1 | Switch, Toggle (Main Switch) | 69 | 56475411 | 1 | Bushing, .25 x .37 x .48 |
| 32 | 56324028 | 1 | Light, Indicator Blue (Solution ON) | 70 | 56488290 | 1 | Rod End |
| 33 | 56324513 | 1 | Pulley, Cog | 71 | 56488292 | 1 | Cable (Solution Valve) |
| 34 | 56324272 | 1 | Switch, Rocker (Solution Switch) | 72 | 56324349 | 1 | Hook |
| | | | Ref. TSB 663 | 73 | 56009030 | 1 | Scr, Thd Form #10-24 x .38 |
| 35 | 56324505 | 2 | Bearing, Flange | 74 | 56366633 | 2 | Bearing Sleeve (before SN 1230124) |
| 36 | 56328758 | 1 | Bushing | | | | |
| 37 | 56358560 | 2 | Spring | | | | |
| 38 | 56362426 | 1 | Knob, Plastic | | | | |
| 39 | 56364527 | 1 | Knob | | | | |
| 40 | 56366633 | 2 | Bearing, Sleeve (before SN 1209360) | | | | |
| 41 | 56369004 | 2 | Bushing | | | | |
| 42 | 56376486 | 1 | Cap | | | | |
| 43 | 56379298 | 3 | Bushing | | | | |
| 44 | 56324362 | 1 | Switch, Snap, SPDT NC (Vac Motor) | | | | |
| 45 | 56392171 | 2 | Clamp, Plastic | | | | |
| 46 | 56388545 | 2 | Grip, Handle | | | | |

* = Not Shown

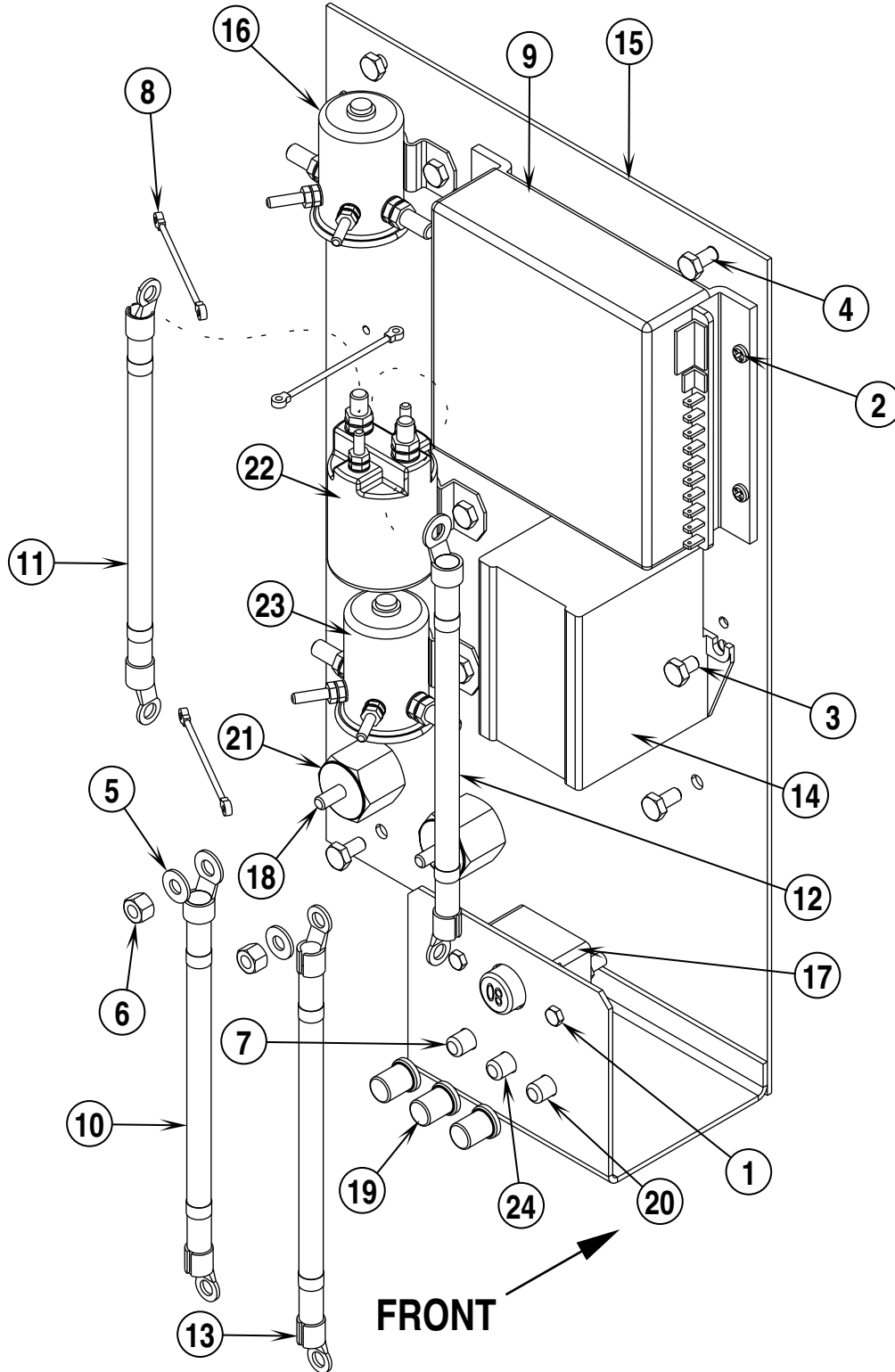
BA 700 Before SN 1082069



| | | | | |
|-------|------------------------------|---------------|--------------|----------|
| 95-4 | ELECTRICAL PANEL-1 | BOOK E | | |
| 00-12 | 28LX / 280HD / BA 700 | E | 5.6.1 | 5 |

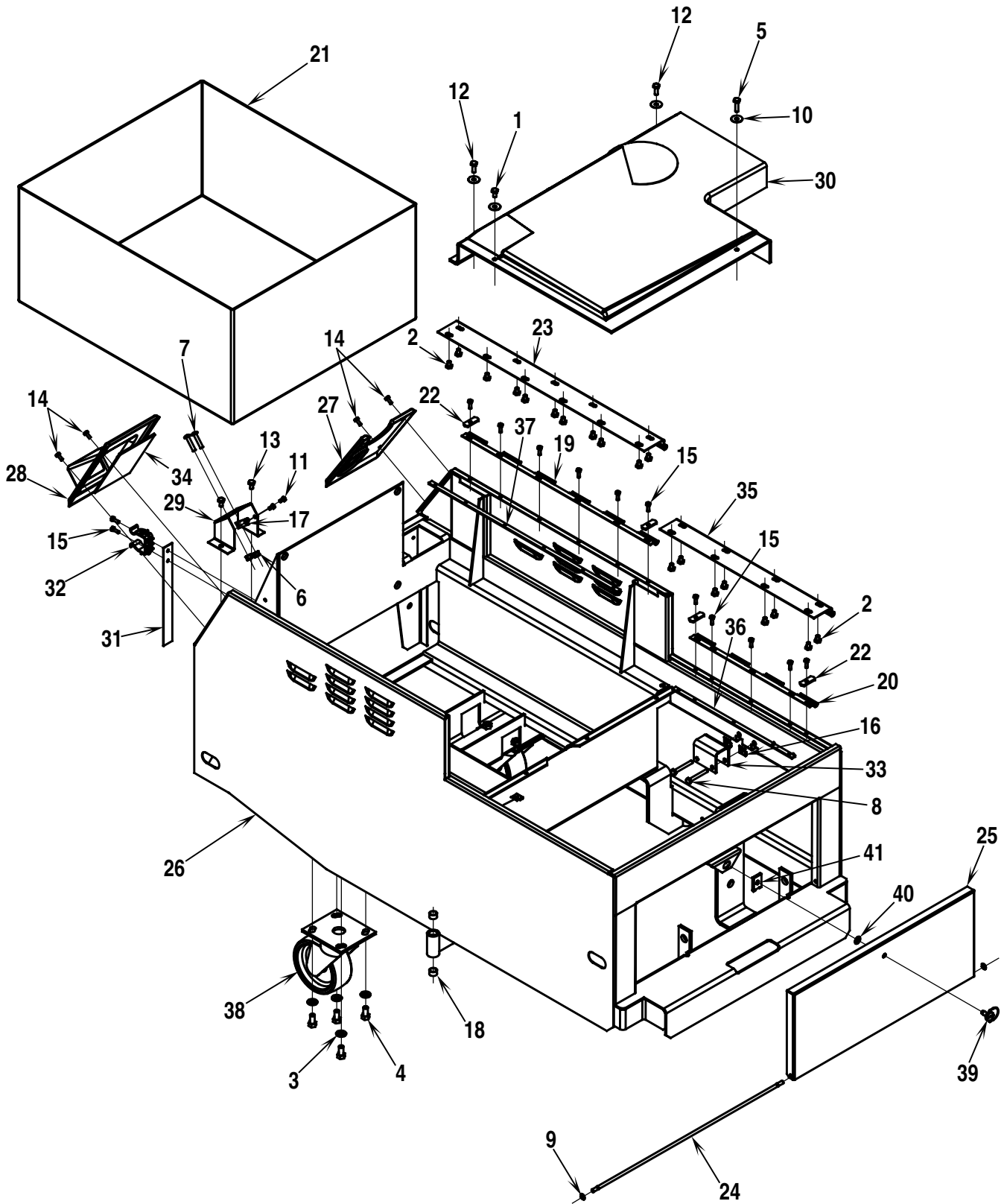
| Item | Ref. No. | Qty | Description |
|------|----------|-----|---|
| 1 | 56392678 | 1 | Panel Weld't |
| 2 | 56391210 | 1 | Control, Speed |
| 3 | 56002523 | 4 | Scr, Pan Phil Thd Form 8-32 x .38 |
| 4 | 56388534 | 1 | Solenoid, 36V (Brush Down) |
| 5 | 56469788 | 1 | Circuit Breaker, 25 Amp (Vac Motor) |
| 6 | 56469788 | 1 | Circuit Breaker, 25 Amp (Drive Motor) |
| 7 | 56387328 | 1 | Circuit Breaker, 5 Amp (Control Circuit) |
| 8 | 56454429 | 1 | Circuit Breaker, 70 Amp (Brush Motor) |
| 9 | 56009033 | 4 | Scr, Hex Thd Form 1/4-20 x .50 |
| 10 | 56454376 | 2 | Stud, 1/4-20 |
| 11 | 56469858 | 2 | Standoff, Insulated |
| 12 | 56395452 | 1 | Solenoid, 36V (Vac Motor) |
| 13 | 56395452 | 1 | Solenoid, 36V (Brush Motor) |
| 14 | 56009019 | 10 | Scr, Hex Thd Form 1/4-20 x .38 |
| 15 | 56395452 | 1 | Solenoid, 36V (Drive Motor) |
| 16 | 56388534 | 1 | Solenoid, 36V (Brush Up) |
| 17 | 56391357 | 1 | Time Delay, 1.5 SEC |
| 18 | 56391159 | 1 | Cable Assembly |
| 19 | 56376406 | 1 | Cable Assembly |
| 20 | 56389265 | 4 | Diode Assembly |
| 21 | 56391160 | 1 | Cable Assembly |
| 22 | 56393379 | 1 | Cable Assembly |
| 23 | 56459369 | 1 | Boot, Reset Button |
| 24 | 56459367 | 3 | Boot, Reset Button |

**BA 700 After SN 1082068
All 28LX / 280HD**



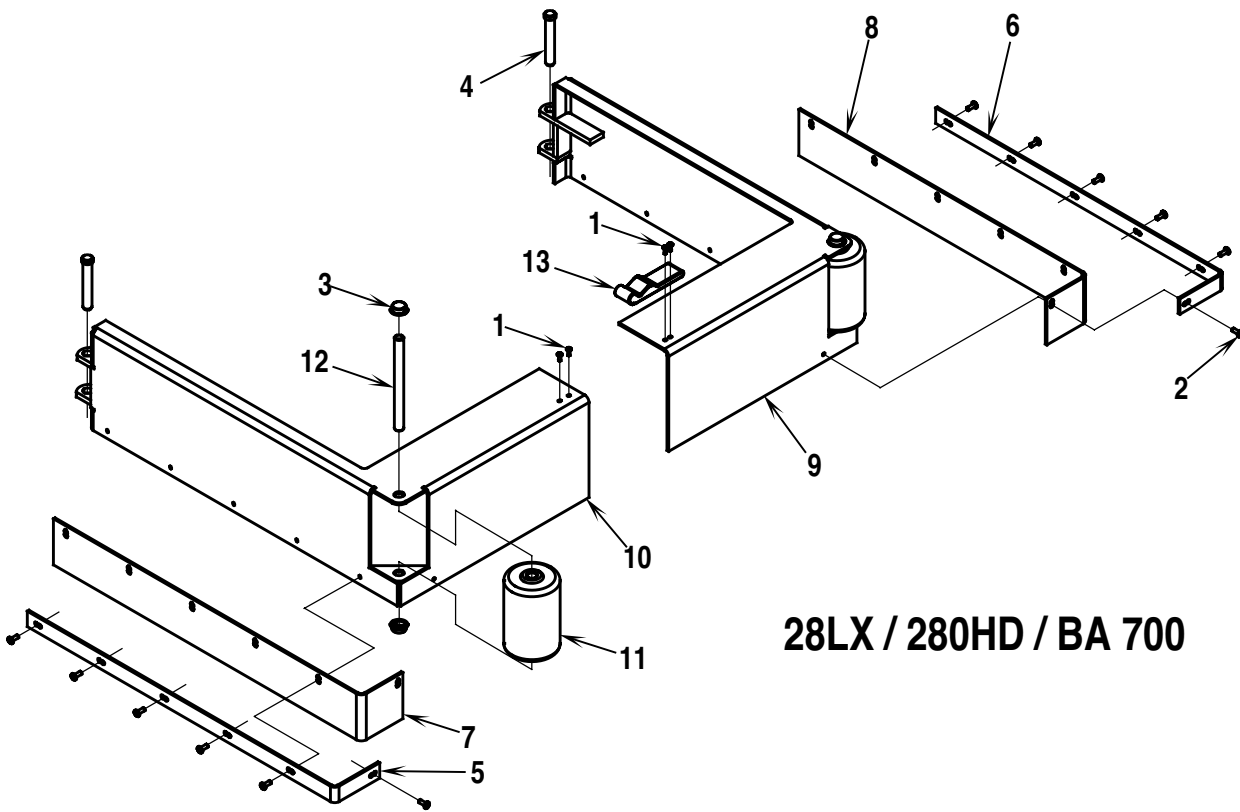
| | | | | |
|-------|------------------------------|---------------|--------------|----------|
| 95-4 | ELECTRICAL PANEL-2 | BOOK E | | |
| 00-12 | 28LX / 280HD / BA 700 | E | 5.6.1 | 7 |

| Item | Ref. No. | Qty | Description |
|------|----------|-----|---|
| 1 | 56002425 | 2 | Scr, Hex Hd 10-24 x .88 |
| 2 | 56002523 | 4 | Scr, Pan Phil Thd Form 8-32 x .38 |
| 3 | 56009019 | 8 | Scr, Hex Thd Form 1/4-20 x .38 |
| 4 | 56009033 | 4 | Scr, Hex Thd Form 1/4-20 x .50 |
| 5 | 56009064 | 2 | Wsh, Int Shprf 1/4 |
| 6 | 56009179 | 2 | Nut, Hex Machine 1/4-20 |
| 7 | 56387328 | 1 | Circuit Breaker, 5 Amp (Control Circuit) |
| 8 | 56389265 | 3 | Diode Assembly |
| 9 | 56391210 | 1 | Control, Speed |
| 10 | 56391385 | 1 | 4 AWG No. 4 Cable Assembly |
| 11 | 56391386 | 1 | 4 AWG No. 3 Cable Assembly |
| 12 | 56391387 | 1 | 4 AWG No. 27 Cable Assembly |
| 13 | 56391388 | 1 | 4 AWG No. 2 Cable Assembly |
| 14 | 56392173 | 1 | Actuator Control Module |
| 15 | 56392212 | 1 | Panel, Electrical |
| 16 | 56395452 | 1 | Solenoid, 36V (Drive Motor) |
| 17 | 56409230 | 1 | Circuit Breaker, 80 Amp (Brush Motor) |
| 18 | 56454376 | 2 | Stud, 1/4-20 |
| 19 | 56459367 | 3 | Boot, Reset Button |
| 20 | 56469788 | 1 | Circuit Breaker, 25 Amp (Vacuum Motor) |
| 21 | 56469858 | 2 | Standoff, Insulated |
| 22 | 56395450 | 1 | Solenoid, 36V (Brush Motor) |
| 23 | 56395452 | 1 | Solenoid, 36V (Vacuum Motor) |
| 24 | 56469788 | 1 | Circuit Breaker, 25 Amp (Drive Motor) |

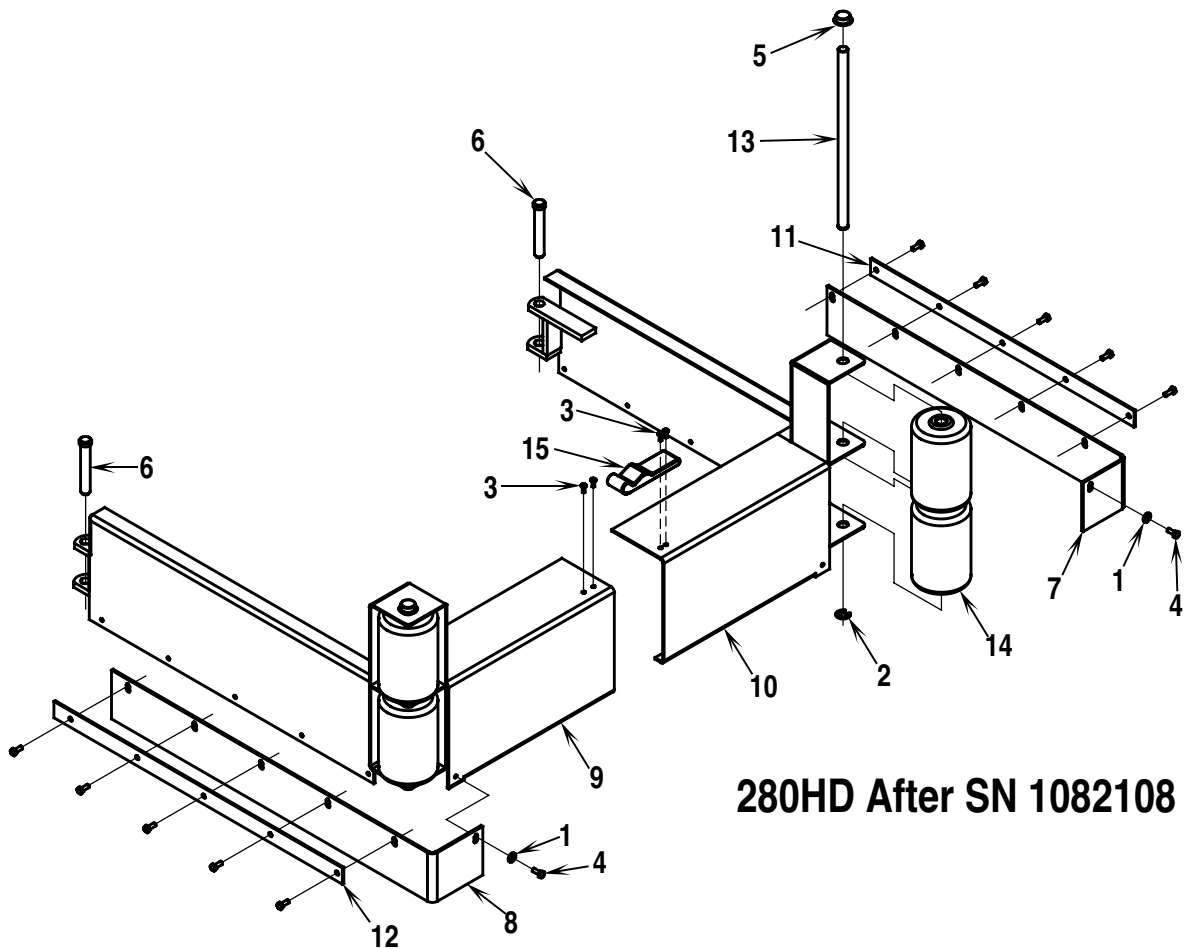


| | | | | |
|-------|------------------------------|---------------|--------------|----------|
| 95-4 | CHASSIS SYSTEM | BOOK E | | |
| 00-12 | 28LX / 280HD / BA 700 | E | 5.6.1 | 9 |

| Item | Ref. No. | Qty | Description |
|------|----------|-----|-------------------------------------|
| 1 | 56001854 | 1 | Scr, Hex Hd 1/4-20 x .50 |
| 2 | 56001861 | 19 | Scr, Hex Hd 1/4-20 x .38 |
| 3 | 56002063 | 8 | Wsh, Flt SAE 3/8 |
| 4 | 56002127 | 8 | Scr, Hex Hd 3/8-16 x .75 |
| 5 | 56002686 | 1 | Scr, Hex Thd Form 1/4-20 x 1.00 |
| 6 | 56002708 | 2 | Nut, Hex Nyl Loc 1/4-20 |
| 7 | 56002825 | 2 | Scr, Pan Phil 1/4-20 x 1.25 |
| 8 | 56003117 | 2 | Scr, Hex Hd Loc 1/4-20 x 2.00 |
| 9 | 56003268 | 2 | Ring, Ret Ext Type E Reinf. .25 Dia |
| 10 | 56009002 | 4 | Wsh, Flt .26 x .90 x .06 |
| 11 | 56009012 | 2 | Scr, Hex Thd Form 10-24 x .38 |
| 12 | 56009018 | 2 | Scr, Hex Thd Form 1/4-20 x .75 |
| 13 | 56009033 | 2 | Scr, Hex Thd Form 1/4-20 x .50 |
| 14 | 56009039 | 4 | Scr, Hex Thd Form 10-24 x .50 |
| 15 | 56009135 | 15 | Scr, Hex Thd Form 10-24 x .62 |
| 16 | 56321520 | 3 | Nut, Clamp |
| 17 | 56324310 | 1 | Nut Plate |
| 18 | 56366633 | 4 | Bearing, Sleeve |
| 19 | 56391181 | 1 | Hinge, Recovery |
| 20 | 56391189 | 1 | Hinge, Solution |
| 21 | 56391248 | 1 | Tray, Battery |
| 22 | 56391260 | 4 | Clip, Hinge |
| 23 | 56391381 | 1 | Hinge, Recovery Tank |
| 24 | 56391781 | 1 | Rod |
| 25 | 56392132 | 1 | Panel, Front |
| 26 | 56392141 | 1 | Chassis Weld't |
| 27 | 56392162 | 1 | Panel, Rear Left |
| 28 | 56392163 | 1 | Panel, Rear Right |
| 29 | 56392164 | 1 | Bracket |
| 30 | 56392166 | 1 | Cover |
| 31 | 56392167 | 1 | Strap, Web |
| 32 | 56392171 | 1 | Clamp, Plastic |
| 33 | 56392186 | 1 | Bracket, Valve |
| 34 | 56392195 | 1 | Guard |
| 35 | 56392669 | 1 | Hinge, Solution Tank |
| 36 | 56392675 | 1 | Nut, Plate |
| 37 | 56392676 | 1 | Nut, Plate |
| 38 | 56440450 | 2 | Caster, swivel |
| | 56503007 | A/R | Wheel (for caster, swivel) |
| 39 | 56448104 | 1 | Screw Fastener |
| 40 | 56448108 | 1 | Washer, Retainer |
| 41 | 56468960 | 1 | Screw, Receptacle |



28LX / 280HD / BA 700



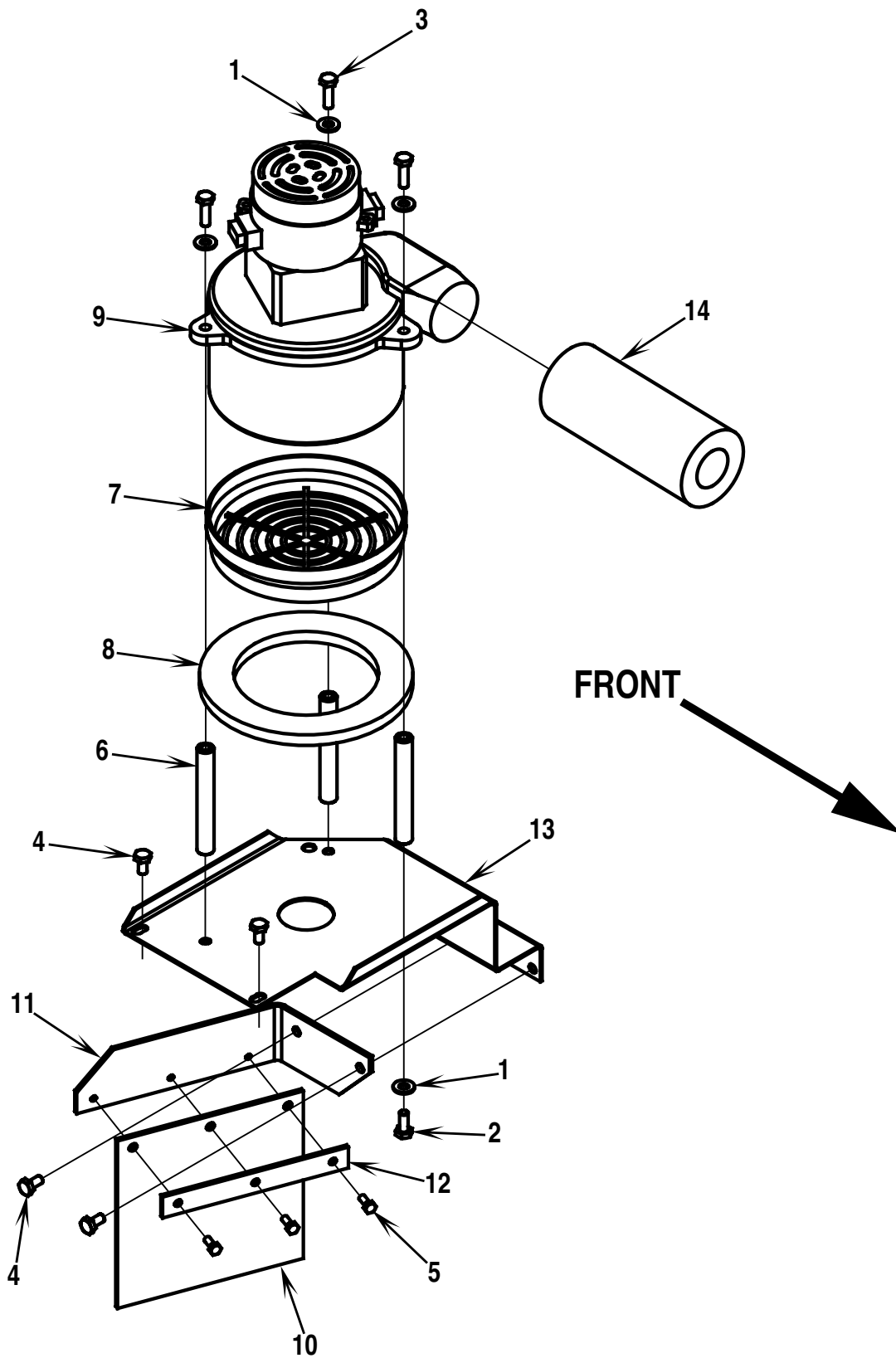
280HD After SN 1082108

| | | | | |
|-------|------------------------------|---------------|--------------|-----------|
| 95-4 | SKIRT SYSTEMS | BOOK E | | |
| 00-12 | 28LX / 280HD / BA 700 | E | 5.6.1 | 11 |

| Item | Ref. No. | Qty | Description |
|------------------------------|----------|-----|--|
| 28LX / 280HD / BA 700 | | | |
| 1 | 56009013 | 4 | Scr, Pan Phil Thd Form-Blk 6-32 x .38 |
| 2 | 56009082 | 12 | Scr, Pan Phil Thd Form-Blk 10-24 x .50 |
| 3 | 56009097 | 4 | Nut, Push Cap 1/2 |
| 4 | 56360147 | 2 | Pin |
| 5 | 56391317 | 1 | Retainer, R.H. Skirt |
| 6 | 56391318 | 1 | Retainer, L.H. Skirt |
| 7 | 56391319 | 1 | Skirt, Right |
| 8 | 56391321 | 1 | Skirt, Left |
| 9 | 56391347 | 1 | Skirt, Left Weld't NOTE 1 |
| 10 | 56391348 | 1 | Skirt, Right Weld't NOTE 1 |
| 11 | 56392102 | 2 | Roller |
| 12 | 56393372 | 2 | Rod |
| 13 | 56462316 | 1 | Latch |

NOTE 1: This applies to Hydro-Retriever™ 280HD models from serial no. 1079298 through 1082108 only.

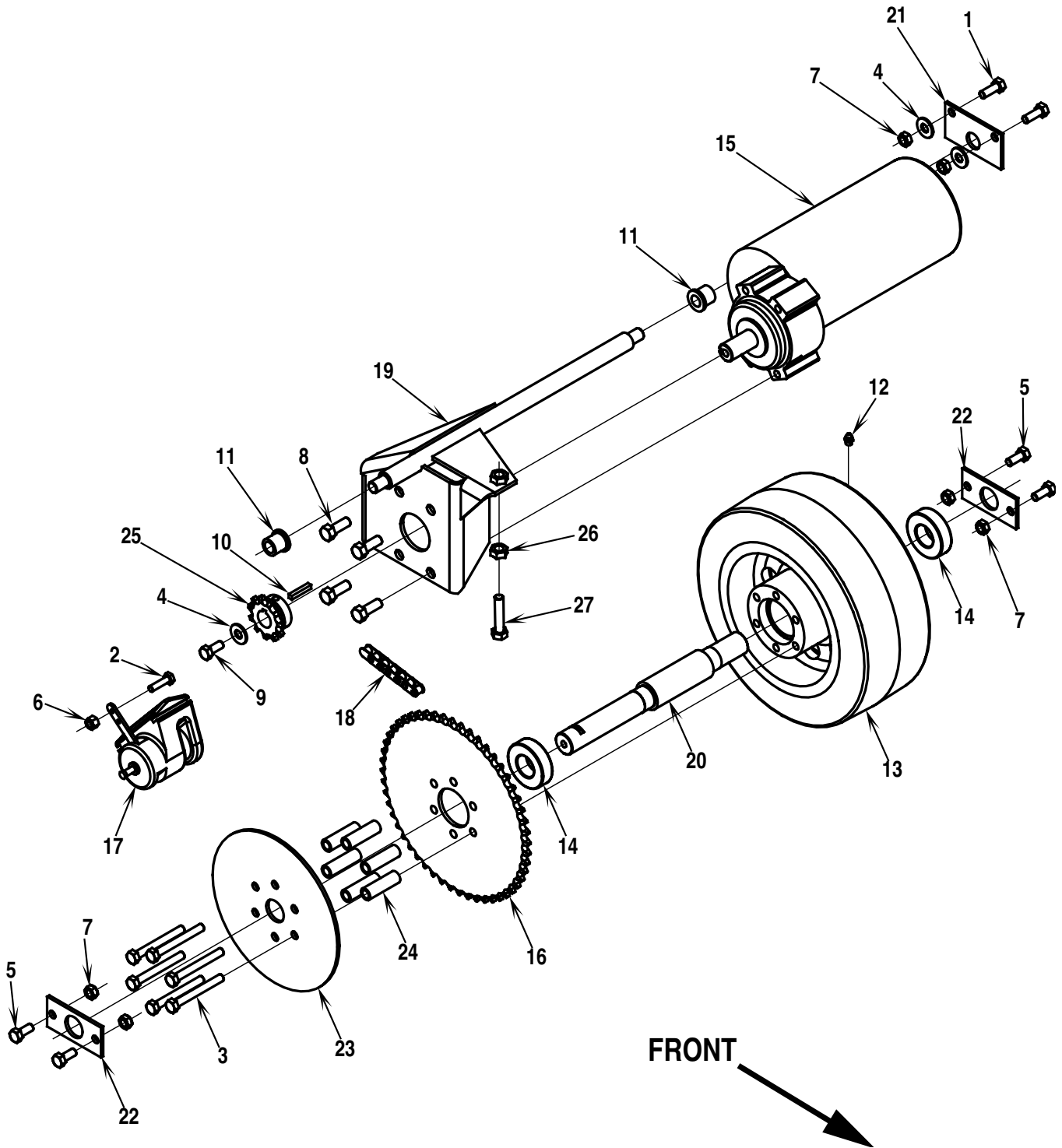
| Item | Ref. No. | Qty | Description |
|------------------------------|----------|-----|---------------------------------------|
| 280HD After SN1082108 | | | |
| 1 | 56009096 | 2 | Wsh, Flt SAE #10 |
| 2 | 56003264 | 2 | Ring, Ret Ext Type E |
| 3 | 56009013 | 4 | Scr, Pan Phil Thd Form-Blk 6-32 x .38 |
| 4 | 56009039 | 12 | Scr, Hex Thd Form 10-24 x .50 |
| 5 | 56009097 | 2 | Nut, Push Cap 1/2 |
| 6 | 56360147 | 2 | Pin |
| 7 | 56391389 | 1 | Skirt, Left |
| 8 | 56391390 | 1 | Skirt, Right |
| 9 | 56391916 | 1 | Skirt, Right Weld't |
| 10 | 56391917 | 1 | Skirt, Left Weld't |
| 11 | 56391918 | 1 | Retainer, L.H. Skirt |
| 12 | 56391919 | 1 | Retainer, R.H. Skirt |
| 13 | 56391926 | 2 | Pin, Bumper Roller |
| 14 | 56392102 | 4 | Roller |
| 15 | 56462316 | 1 | Latch |



| | | | | |
|-------|------------------------------|---------------|--------------|-----------|
| 95-4 | VACUUM MOTOR SYSTEM | BOOK E | | |
| 01-11 | 28LX / 280HD / BA 700 | E | 5.6.1 | 13 |

| Item | Ref. No. | Qty | Description |
|------|----------|-----|--------------------------------|
| 1 | 56002098 | 6 | Wsh, Flt SAE 1/4 |
| 2 | 56002922 | 3 | Scr, Hex Hd Loc 1/4-20 x .62 |
| 3 | 56002960 | 3 | Scr, Hex Hd Loc 1/4-20 x .88 |
| 4 | 56009033 | 4 | Scr, Hex Thd Form 1/4-20 x .50 |
| 5 | 56009039 | 3 | Scr, Hex Thd Form 10-24 x .50 |
| 6 | 56377474 | 3 | Stand-off |
| 7 | 56384898 | 1 | Filter |
| 8 | 56385437 | 1 | Gasket |
| 9 | 56391208 | 1 | Vac Motor, 36V |
| * | 56377001 | 1 | Carbon Brushes for Vac Motor |
| 10 | 56391307 | 1 | Blade |
| 11 | 56391760 | 1 | Bracket |
| 12 | 56391761 | 1 | Strap |
| 13 | 56391786 | 1 | Mount, Vac Motor |
| 14 | 56391807 | 1 | Foam, Acoustical |

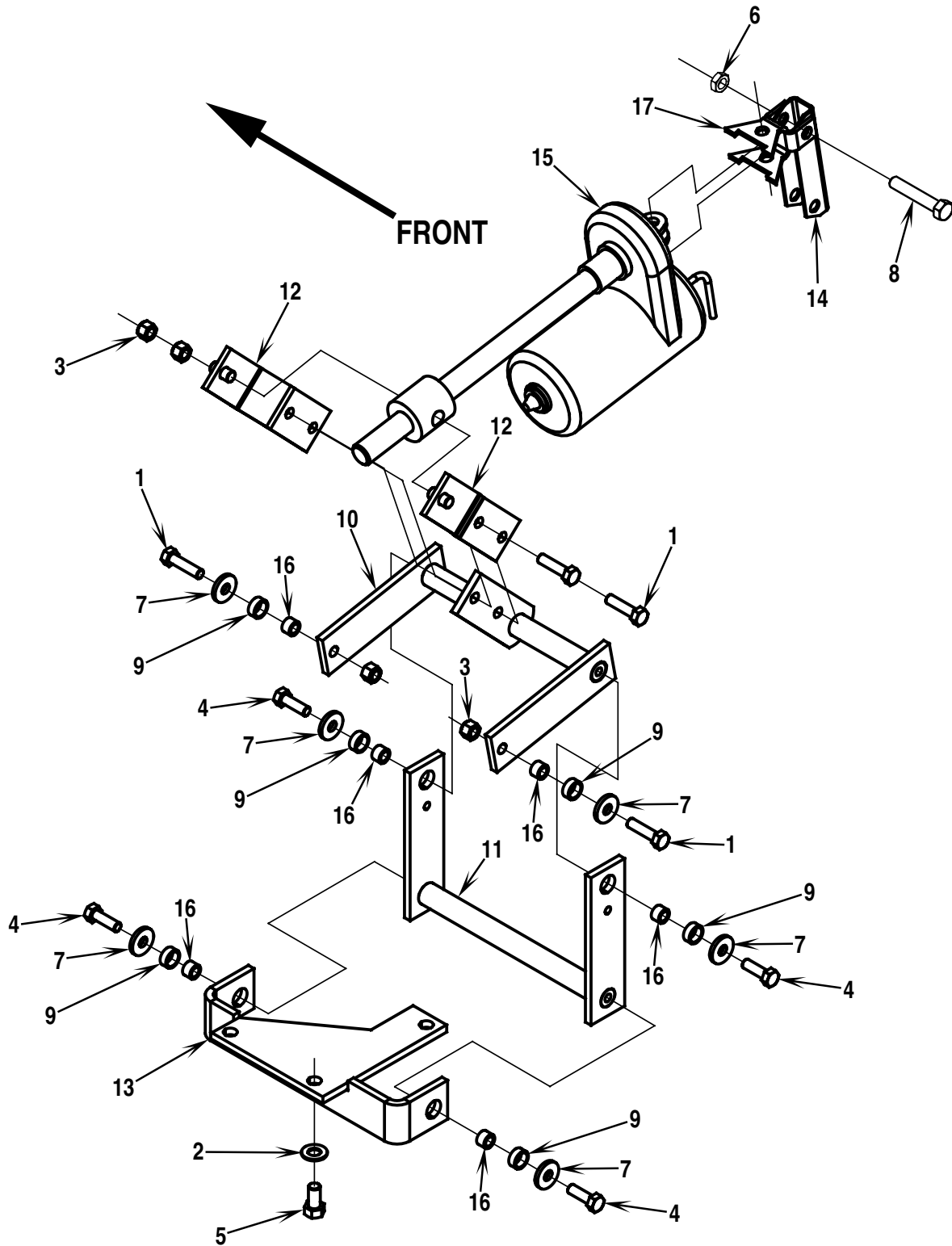
* = Not Shown



| | | | | |
|-------|------------------------------|---------------|--------------|-----------|
| 95-4 | DRIVE SYSTEM | BOOK E | | |
| 00-12 | 28LX / 280HD / BA 700 | E | 5.6.1 | 15 |

| Item | Ref. No. | Qty | Description |
|------|----------|-----|--------------------------------|
| 1 | 56002037 | 2 | Scr, Hex Hd 5/16-18 x .88 |
| 2 | 56002093 | 1 | Scr, Hex Hd 1/4-20 x 1.00 |
| 3 | 56002203 | 6 | Scr, Hex Hd 5/16-18 x 2.75 |
| 4 | 56002220 | 3 | Wsh, Flt Std 5/16 |
| 5 | 56002667 | 4 | Scr, Hex Hd 5/16-18 x .75 |
| 6 | 56002708 | 1 | Nut, Hex Nyl Loc 1/4-20 |
| 7 | 56002826 | 6 | Nut, Hex Nyl Loc-Thin 5/16-18 |
| 8 | 56002947 | 4 | Scr, Hex Hd Loc 3/8-16 x 1.00 |
| 9 | 56002956 | 1 | Scr, Hex Hd Loc 5/16-18 x .75 |
| 10 | 56003240 | 1 | Key, Sq .19 x 1.12 |
| 11 | 56111503 | 2 | Bearing, Flange |
| 12 | 56344362 | 1 | Fitting Lube 1/4-28 |
| 13 | 56376628 | 1 | Wheel 10.00 x 4.00 |
| 14 | 56378380 | 2 | Bearing, Ball |
| 15 | 56388585 | 1 | Drive Motor |
| * | 56388586 | 1 | Carbon Brushes for Drive Motor |
| 16 | 56388700 | 1 | Sprocket |
| 17 | 56391301 | 1 | Brake |
| 18 | 56391310 | 1 | Chain, Roller |
| 19 | 56391530 | 1 | Motor Bracket Weld't |
| 20 | 56391534 | 1 | Axle |
| 21 | 56391535 | 1 | Pillow Block |
| 22 | 56391536 | 2 | Pillow Block |
| 23 | 56391537 | 1 | Disc, Brake |
| 24 | 56391539 | 6 | Spacer |
| 25 | 56471148 | 1 | Sprocket |
| 26 | 56001894 | 1 | Nut, Hex Lock 3/8-16 |
| 27 | 56002470 | 1 | Scr, Hex Hd 3/8-16 x 2.00 |

* = Not Shown

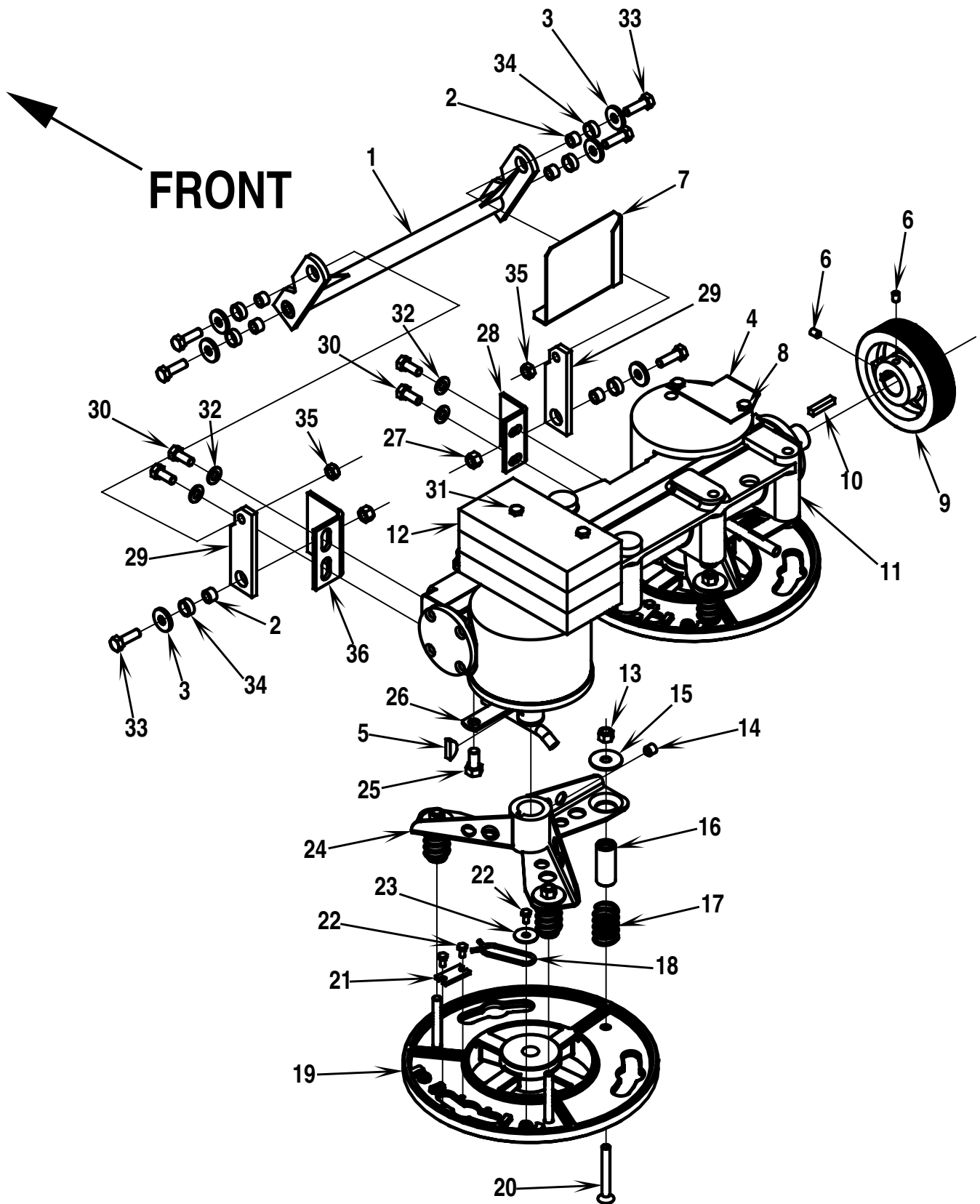


| | | | | |
|-------|------------------------------|---------------|--------------|-----------|
| 95-4 | BRUSH LIFT SYSTEM | BOOK E | | |
| 00-12 | 28LX / 280HD / BA 700 | E | 5.6.1 | 17 |

| Item | Ref. No. | Qty | Description |
|------|----------|-----|--|
| 1 | 56001834 | 2 | Scr, Hex Hd 5/16-18 x 1.25 |
| 2 | 56002063 | 3 | Wsh, Flt SAE 3/8 |
| 3 | 56002701 | 4 | Nut, Hex Nyl Loc 5/16-18 |
| 4 | 56003073 | 6 | Scr, Hex Hd Loc 5/16-18 x 1.00 |
| 5 | 56003079 | 3 | Scr, Hex Hd Loc 3/8-16 x .75 |
| 6 | 56002842 | 3 | Nut, Hex Nyl Loc-Thin 3/8-16 NOTE |
| 7 | 56009122 | 6 | Wsh, Flt .34 x .94 x .12 |
| 8 | 56002684 | 3 | Scr, Hex Hd 3/8-16 x 1.75 |
| 9 | 56185263 | 6 | Bearing, Sleeve |
| 10 | 56391577 | 1 | Lever Weld't |
| 11 | 56391587 | 1 | Lifter Yoke Weld't |
| 12 | 56391590 | 2 | Lever Weld't |
| 13 | 56391593 | 1 | Bracket Weld't |
| 14 | 56391626 | 1 | Arm, Swing |
| 15 | 56391627 | 1 | Actuator, Motor |
| * | 56388520 | 1 | Nut, Plastic for Actuator |
| * | 56470431 | 1 | Carbon Brush Kit for Actuator |
| * | 56393790 | A/R | Switch, Limit for Actuator |
| 16 | 56391840 | 6 | Bushing |
| 17 | 56392454 | 1 | Yoke, Actuator |

* = Not Shown

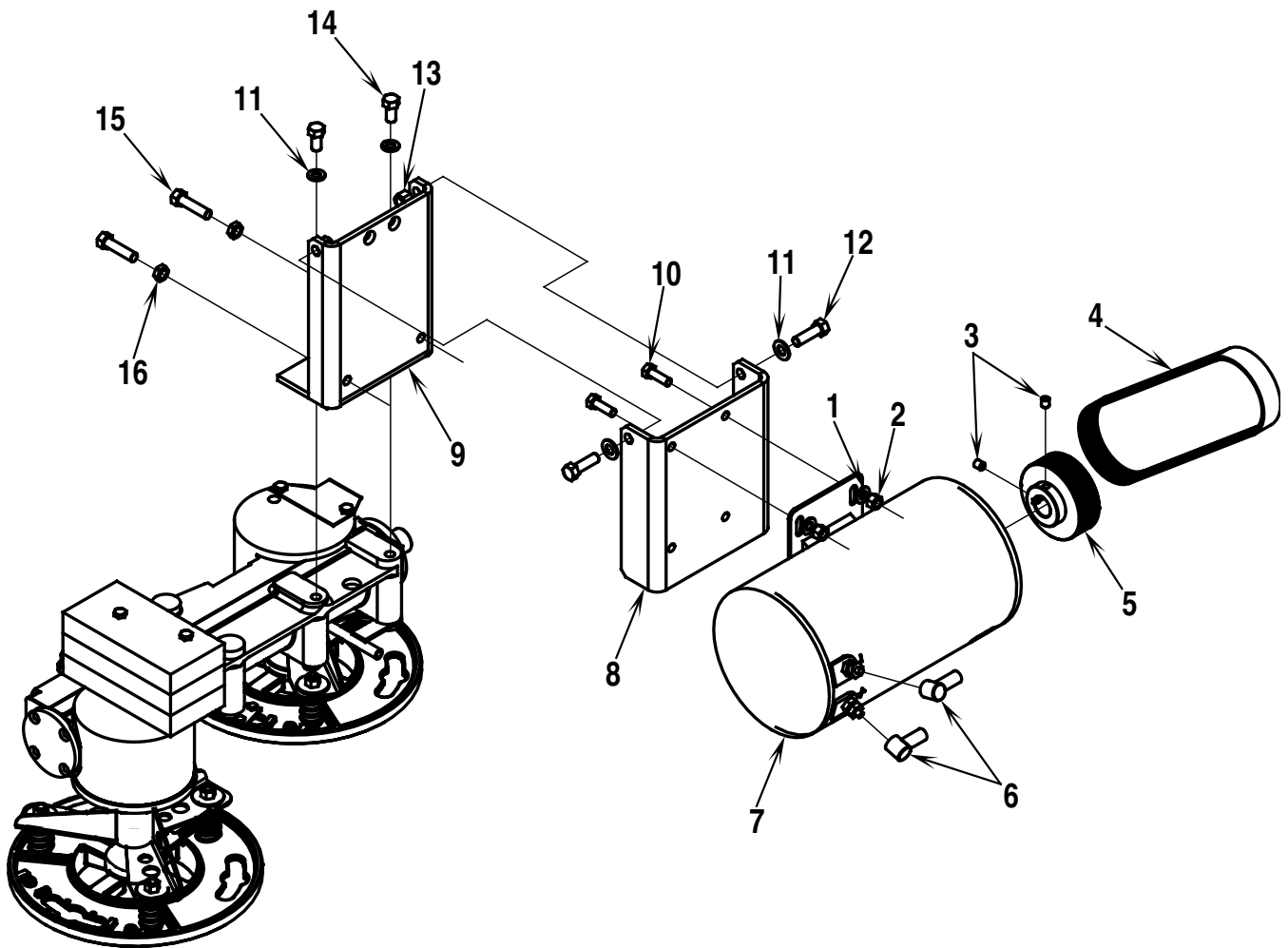
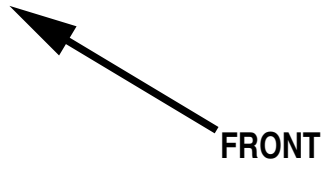
NOTE: Tighten nut until threads on the end of the screw are flush with the nut. **CAUTION!** Do Not over-tighten!



| | | | | |
|-------|--------------------------------------|---------------|--------------|-----------|
| 95-4 | GEARCASE (BRUSH DRIVE SYSTEM) | BOOK E | | |
| 00-12 | 28LX / 280HD / BA 700 | E | 5.6.1 | 19 |

| Item | Ref. No. | Qty | Description |
|------|----------|-----|--|
| 1 | 56391581 | 1 | Torsion Bar Weld't |
| 2 | 56391840 | 6 | Bushing |
| 3 | 56009122 | 6 | Wsh, Flt .34 x .94 x .12 |
| 4 | 56391765 | 1 | Bracket |
| 5 | 56003231 | 2 | Key, WDF .88 x .25 |
| 6 | 56002930 | 2 | Scr, Soc Set Loc 1/4-20 x .38 |
| 7 | 56392853 | 1 | Shield |
| 8 | 56003039 | 2 | Scr, Hex Hd Loc 1/4-20 x .50 |
| 9 | 56392400 | 1 | Sheave, Poly V Belt (10 groove-10J43) |
| 10 | 56003245 | 1 | Key, Sq. .25 x 1.19 |
| 11 | 56391268 | 1 | Gear Case Ass'y (includes #4, 28 & 35) |
| 12 | 56391839 | 3 | Weight |
| 13 | 56002856 | 6 | Nut, Hex Nyl Loc SS 5/16-18 |
| 14 | 56003081 | 2 | Scr, Soc Set Loc 3/8-16 x .38 |
| 15 | 56009094 | 6 | Wsh, Flt SS .38 x 1.25 x .08 |
| 16 | 56392530 | 6 | Spacer |
| 17 | 56392513 | 6 | Spring |
| 18 | 56366463 | 2 | Spring Retainer |
| 19 | 56391611 | 2 | Holder Casting, Brush |
| 20 | 56002965 | 6 | Scr, Flt Phil SS 5/16-18 x 2.50 |
| 21 | 56366455 | 2 | Plate, Stop |
| 22 | 56002879 | 6 | Scr, Hex Hd SS 10-24 x .38 |
| 23 | 56009002 | 2 | Wsh, Flt .27 x .91 x .06 |
| 24 | 56392396 | 2 | Drive Adaptor Weld't |
| 25 | 56003079 | 2 | Scr, Hex Hd Loc 3/8-16 x .75 |
| 26 | 56391604 | 2 | Pipe Weld't |
| 27 | 56002701 | 2 | Nut, Hex Nyl Loc 5/16-18 |
| 28 | 56391953 | 1 | Bracket, Right |
| 29 | 56391586 | 2 | Bar |
| 30 | 56002956 | 4 | Scr, Hex Hd Loc 5/16-18 x .75 |
| 31 | 56002689 | 2 | Scr, Hex Hd 1/4-20 x 3.50 |
| 32 | 56001939 | 4 | Wsh, Flt SAE 5/16 |
| 33 | 56002221 | 6 | Scr, Hex Hd 5/16-18 x 1.00 |
| 34 | 56185263 | 6 | Bearing, Sleeve |
| 35 | 56002826 | 2 | Nut, Hex Nyl Loc-Thin 5/16-18 |
| 36 | 56391952 | 1 | Bracket, Left |
| ** | 56505770 | 2 | Short Trim Pad Holder |
| ** | 56505771 | 2 | Magna Grit Brush/Disc |
| ** | 56505772 | 2 | Dyna Grit Brush/Disc |
| ** | 56505773 | 2 | AgLite Grit Brush/Disc |
| ** | 56505774 | 2 | Prolene Brush/Disc |
| ** | 56505775 | 2 | ProLite Brush/Disc |
| ** | 56505776 | 2 | Union Mix Brush/Disc |
| ** | 56505777 | 2 | MidGrit Brush/Disc |
| ** | 56505778 | 2 | MidLite Grit Brush/Disc |

** = Optional, Not Included



| | | | | |
|-------|---|---------------|--------------|-----------|
| 95-4 | BRUSH DRIVE MOTOR (BRUSH DRIVE SYSTEM) | BOOK E | | |
| 00-12 | 28LX / 280HD / BA 700 | E | 5.6.1 | 21 |

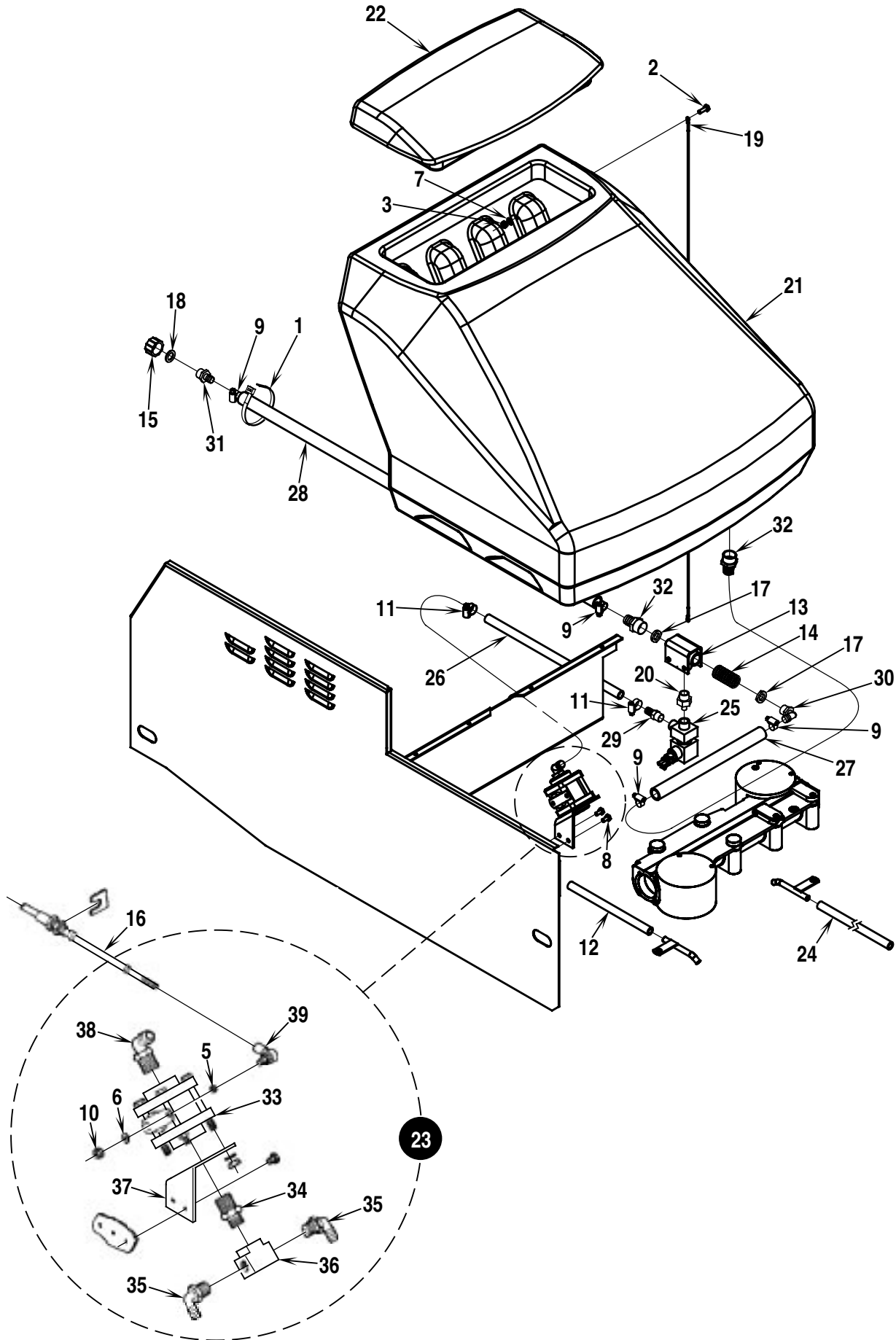
| Item | Ref. No. | Qty | Description |
|------|----------|-----|--|
| 1 | 56001939 | 4 | Wsh, Flt SAE 5/16 |
| 2 | 56002701 | 4 | Nut, Hex Nyl Loc 5/16-18 |
| 3 | 56002021 | 2 | Scr, Soc Set Loc 5/16-18 x .38 |
| 4 | 56756048 | 1 | Belt, Poly V (BA 700 before SN1077399) |
| | 56391397 | 1 | Belt, Poly V (BA 700 after SN1077398, all 28LX/280HD) |
| 5 | 56391610 | 1 | Sheave, Poly V (BA 700 before SN1077399) |
| | 56379730 | 1 | Sheave, Poly V (BA 700 after SN1077398, all 28LX/280HD) |
| 6 | 56492305 | 2 | Boot, Rubber |
| 7 | 56391314 | 1 | Motor, 2.25HP 36V (BA 700 before SN1077399) |
| * | 56448729 | 1 | Carbon Brushes for 56391314 |
| | 56409825 | 1 | Motor, 3 HP, 36V (BA 700 after SN1077398, all 28LX/280HD) |
| * | 56409739 | 4 | Carbon Brush for 56409825 |
| * | 56409738 | 1 | Brush Spring for 56409825 (4 required) |
| * | 56409828 | 1 | Wsh, Bearing Spring |
| * | 56409829 | 1 | Bearing |
| * | 56409830 | 1 | Bearing |
| * | 56409831 | 1 | Complete Commutator Cover Assy. |
| * | 56409832 | 1 | Commutator Cover |
| * | 56409833 | 1 | Complete Brush Ring Assy. |
| * | 56409834 | 1 | Pulley Cover |
| * | 56409835 | 1 | Complete Stator Assy. W/Baffle |
| * | 56409836 | 1 | Complete Armature Assy. |
| 8 | 56392267 | 1 | Channel NOTE 1 |
| 9 | 56391353 | 1 | Bracket |
| 10 | 56002221 | 4 | Scr, Hex Hd 5/16-18 x 1.00 |
| 11 | 56002063 | 4 | Wsh, Flt SAE 3/8 |
| 12 | 56001858 | 2 | Scr, Hex Hd 3/8-16 x 1.25 |
| 13 | 56002769 | 2 | Nut, Hex Nyl Loc 3/8-16 |
| 14 | 56003079 | 2 | Scr, Hex Hd Loc 3/8-16 x .75 |
| 15 | 56002747 | 2 | Scr, Hex Thd to Hd 3/8-16 x 1.50 |
| 16 | 56009085 | 2 | Nut, Hex Jam 3/8-16 |

* = Not Shown

NOTE 1: New motor mount channel PN 56392267 allows more clearance between motor and battery box.

| | | | | |
|-------|------------------------------|---------------|--------------|-----------|
| 95-4 | RECOVERY TANK SYSTEM | BOOK E | | |
| 00-12 | 28LX / 280HD / BA 700 | E | 5.6.1 | 23 |

| Item | Ref. No. | Qty | Description |
|------|----------|-----|---|
| 1 | 56324045 | 1 | Cover Assembly (#8-14) (all 28LX / 280HD only before SN 1192077) |
| | 56324396 | 1 | Cover Assembly (#8-14) (280HD after SN 1192076, all BA700) |
| 2 | 56329145 | 1 | Clamp, Hose SAE #24 |
| 3 | 56392199 | 1 | Tank, Recovery (all 28LX / 280HD only before SN 1192077) |
| | 56391371 | 1 | Tank, Recovery (280HD after SN 1192076, all BA700) |
| 4 | 56392205 | 1 | Hose Assembly (Squeegee) (all 28LX / 280HD only before SN 1192077) |
| | 56392168 | 1 | Hose Assembly (Squeegee) (280HD after SN 1192076, all BA700) |
| 5 | 56392201 | 1 | Hose Assembly (Drain) (all 28LX / 280HD only before SN 1192077) |
| | 56392170 | 1 | Hose Assembly (Drain) (280HD after SN 1192076, all BA700) |
| 6 | 56392203 | 1 | Hose Assembly (Vac Motor) (all 28LX / 280HD only before SN 1192077) |
| | 56392227 | 1 | Hose Assembly (Vac Motor) (280HD after SN 1192076, all BA700) |
| 7 | 56324180 | 1 | Plug, Hose (all 28LX / 280HD only before SN 1192077) |
| | 56393772 | 1 | Plug, Hose (280HD after SN 1192076, all BA700) |
| 8 | 56391690 | 1 | Ball |
| 9 | 56324497 | 2 | Cage, Float |
| 10 | 56324298 | 1 | Elbow, Float |
| 11 | 56324046 | 1 | Cover, Tank (all 28LX / 280HD only before SN 1192077) |
| | 56324395 | 1 | Cover, Tank (280HD after SN 1192076, all BA700) |
| 12 | 56262576 | 1 | Gasket |
| 13 | 56209261 | 2 | Washer, Sealing 9/16 |
| 14 | 56003633 | 2 | Scr, Pan Phil SS Type B 10-16 x .50 |

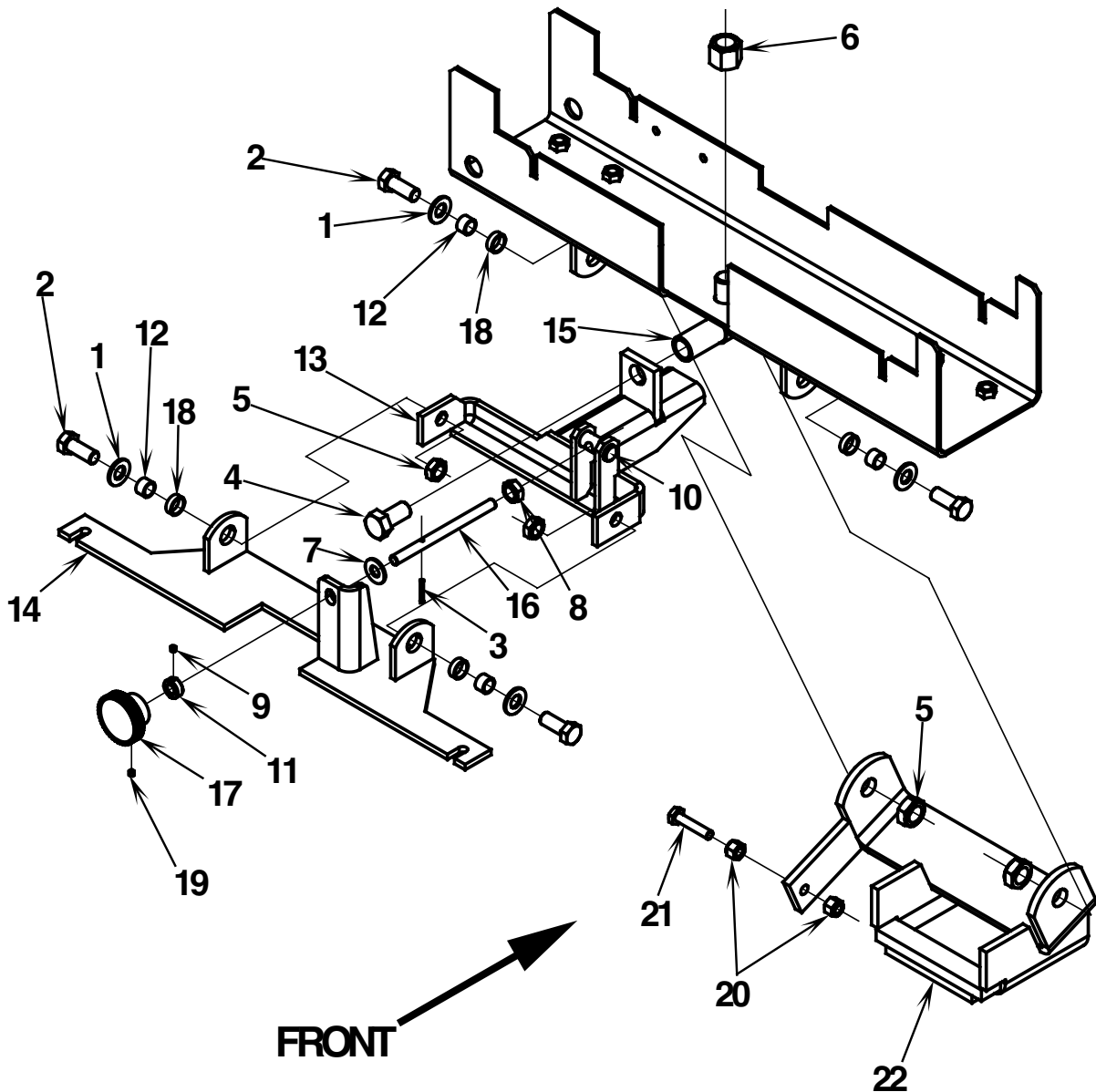


| | | | | |
|-------|------------------------------|---------------|--------------|-----------|
| 95-4 | SOLUTION SYSTEM | BOOK E | | |
| 00-12 | 28LX / 280HD / BA 700 | E | 5.6.1 | 25 |

| Item | Ref. No. | Qty | Description |
|------|----------|-----|---|
| 1 | 56477613 | 1 | Tie, Cable (280HD only after SN 1192076, all BA 700) |
| 2 | 56002807 | 1 | Scr, Hex Hd SS 1/4-20 x .75 |
| 3 | 56002850 | 1 | Nut, Hex Nyl Loc-Thin SS 1/4-20 |
| 4 | 56488290 | 1 | Rod End |
| 5 | 56375334 | 1 | Bushing |
| 6 | 56001954 | 1 | Wsh, Flt SAE #10 |
| 7 | 56009004 | 1 | Wsh, Sealing .18 x .56 |
| 8 | 56009033 | 4 | Scr, Hex Thd Form 1/4-20 x .50 |
| 9 | 56112771 | 4 | Clamp, Hose SAE #10 (qty of 3 on 280HD after SN 1192076, all BA 700) |
| 10 | 56002873 | 1 | Nut, Hex Nyl Loc 10-24 |
| 11 | 56219932 | 2 | Clamp, Hose SAE #6 |
| 12 | 56249682 | 1 | Hose, Spiral |
| 13 | 56324029 | 1 | Tee |
| 14 | 56324030 | 1 | Filter |
| 15 | 56255076 | 1 | Cap |
| 16 | 56488292 | 1 | Cable |
| * | 56392214 | 1 | Bracket, Cable Anchor |
| 17 | 56324313 | 2 | Washer, Rubber |
| 18 | 56368776 | 1 | Washer, Rubber |
| 19 | 56391282 | 1 | Cable Assembly |
| 20 | 56391283 | 1 | Nipple, Reducer 3/8 NPT x 3/4 NPT |
| 21 | 56391395 | 1 | Tank, Solution (all 28LX / 280HD only before SN 1192077) |
| | 56393844 | 1 | Tank, Solution (280HD only after SN 1192076) |
| | 56391369 | 1 | Tank, Solution (BA 700) |
| 22 | 56391396 | 1 | Cover (all 28LX / 280HD only before SN 1192077) |
| | 56391377 | 1 | Cover (280HD only after SN 1192076, all BA 700) |
| 23 | 56391675 | 1 | Solution Valve Assembly (#33-38) |
| 24 | 56391771 | 1 | Hose, Spiral |
| 25 | 56392161 | 1 | Solenoid Valve Assembly |
| * | 56324506 | 1 | Viton Seal Kit for 56392161 |
| * | 56324507 | 1 | EPDM Seal Kit for 56392161 |
| 26 | 56392832 | 1 | Hose, PVC |
| 27 | 56392833 | 1 | Hose, Spiral |
| 28 | 56392834 | 1 | Tube, PVC |
| 29 | 56409507 | 1 | Barb, Adapter 1/2 x 3/8 NPT |
| 30 | 56456802 | 1 | Barb, Elbow |
| 31 | 56900273 | 1 | Barb |
| 32 | 56900292 | 2 | Barb, Adapter 3/4 x 3/4 NPT |
| 33 | 56391681 | 1 | Valve, Flow Control |
| 34 | 56900639 | 1 | Nipple, Hex, Reducer 1/2 x 3/8 |
| 35 | 56900035 | 2 | Barb, 90° Elbow 3/8 Hose x 3/8 NPT |
| 36 | 56900291 | 1 | Tee, Union, 3/8 NPT |
| 37 | 56391676 | 1 | Mount, Valve |
| 38 | 56391678 | 1 | Barb, 1/2 Hose x 1/2 NPT |

* = Not Shown

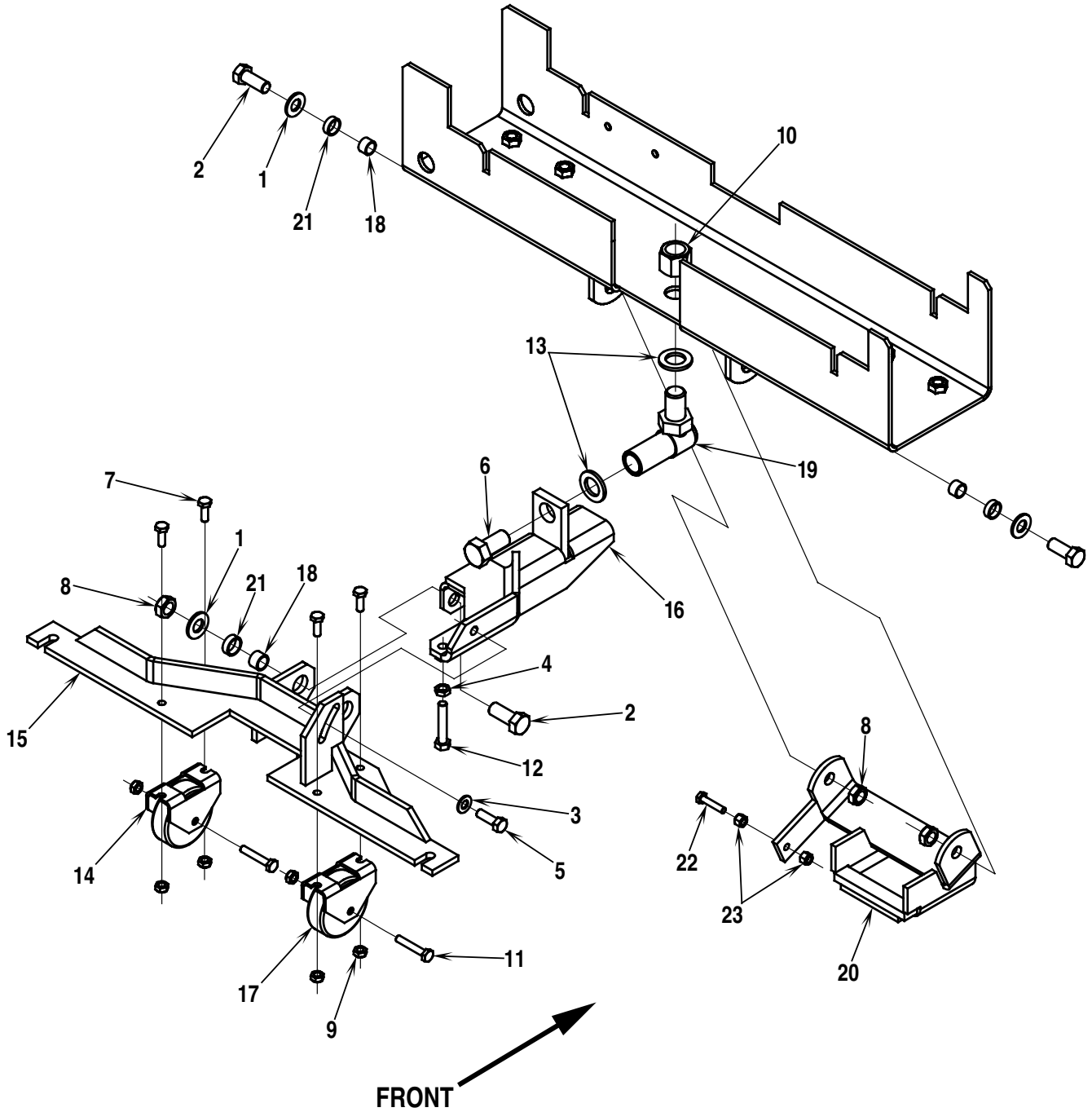
BA 700 Before SN 1082069



| | | | | |
|------|----------------------------------|---------------|--------------|-----------|
| 95-4 | SQUEEGEE MOUNT ASSEMBLY-1 | BOOK E | | |
| 01-2 | 28LX / 280HD / BA 700 | E | 5.6.1 | 27 |

| Item | Ref. No. | Qty | Description |
|------|----------|-----|---------------------------------|
| | 56392245 | 1 | Squeegee Mount Assembly (#1-19) |
| 1 | 56001879 | 4 | Wsh, Flt SAE 1/2 |
| 2 | 56001931 | 4 | Scr, Hex Hd 1/2-13 x 1.25 |
| 3 | 56002291 | 1 | Pin, Spr .12 x 1.00 |
| 4 | 56002739 | 1 | Scr, Hex Hd 3/4-16 x 1.25 |
| 5 | 56002843 | 4 | Nut, Hex Nyl Loc-Thin 1/2-13 |
| 6 | 56002863 | 1 | Nut, Hex Nyl Loc 3/4-16 |
| 7 | 56002891 | 1 | Wsh, Flt Std SS 3/8 |
| 8 | 56009085 | 1 | Nut, Hex Jam 3/8-16 |
| 9 | 56002015 | 1 | Scr, Soc Set Loc 10-24 x .25 |
| 10 | 56324369 | 1 | Pin |
| 11 | 56331076 | 1 | Collar |
| 12 | 56360627 | 4 | Bushing |
| 13 | 56391373 | 1 | Mount Weld't |
| 14 | 56391374 | 1 | Squeegee Mount Weld't |
| 15 | 56391864 | 1 | Ball Joint |
| 16 | 56392104 | 1 | Rod, Adjuster |
| 17 | 56475480 | 1 | Knob |
| 18 | 56478781 | 4 | Bearing, Sleeve |
| 19 | 56001823 | 1 | Scr, Soc Set Loc 10-24 x .38 |
| 20 | 56002708 | 2 | Nut, Hex Nyl Loc 1/4-20 |
| 21 | 56001878 | 1 | Scr, Hex Hd 1/4-20 x 1.25 |
| 22 | 56391860 | 1 | Lifter Weld't |

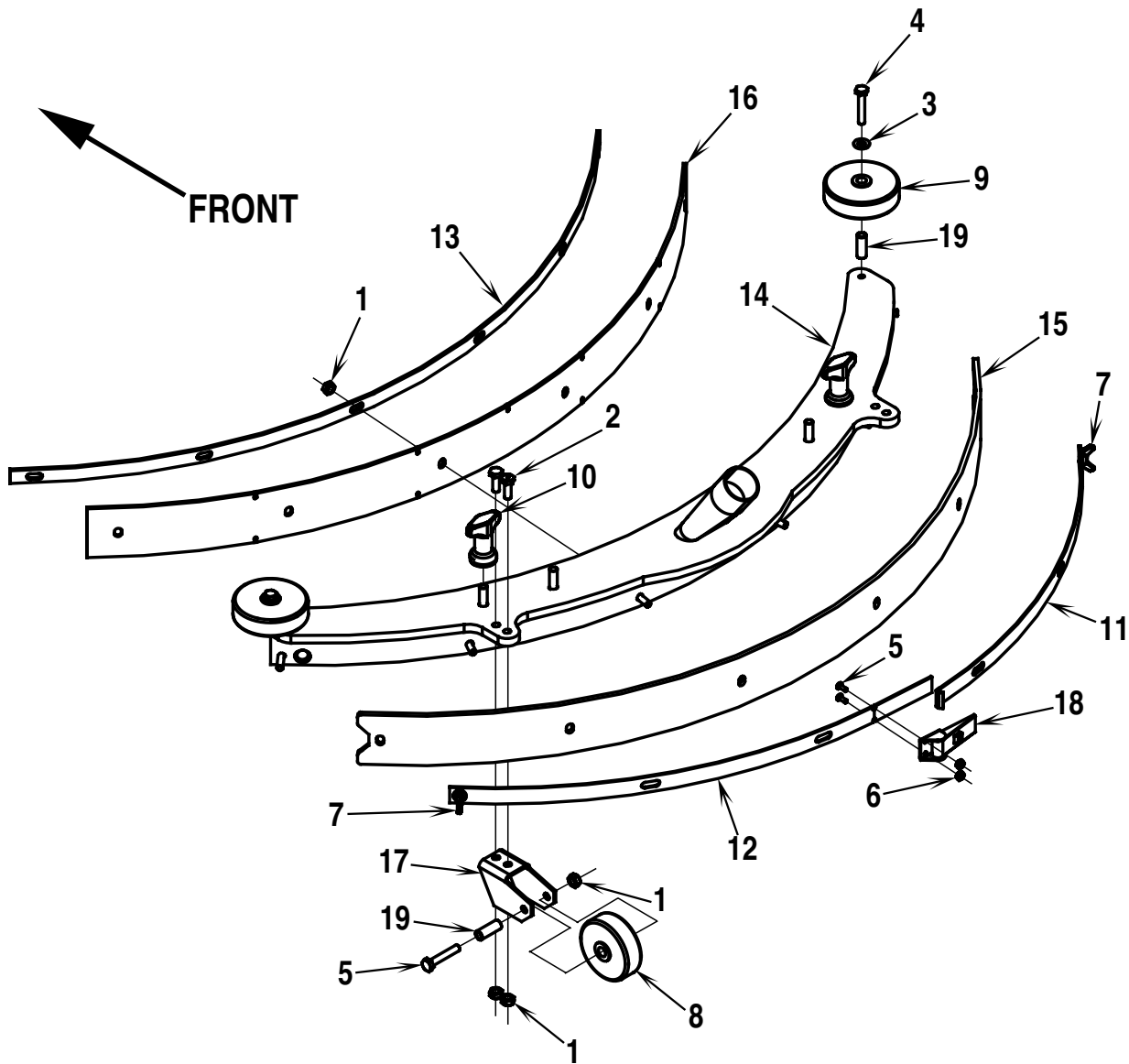
BA 700 After SN 1082068
All 28LX / 280HD



| | | | | |
|-------|----------------------------------|---------------|--------------|-----------|
| 95-4 | SQUEEGEE MOUNT ASSEMBLY-2 | BOOK E | | |
| 00-12 | 28LX / 280HD / BA 700 | E | 5.6.1 | 29 |

| Item | Ref. No. | Qty | Description |
|------|----------|-----|--|
| | 56392218 | 1 | Squeegee Mount Assembly (#1-19 & 21) |
| 1 | 56001879 | 4 | Wsh, Flt SAE 1/2 |
| 2 | 56001931 | 4 | Scr, Hex Hd 1/2-13 x 1.25 |
| 3 | 56001939 | 1 | Wsh, Flt SAE 5/16 |
| 4 | 56002025 | 1 | Nut, Hex Jam 5/16-18 |
| 5 | 56002221 | 1 | Scr, Hex Hd 5/16-18 x 1.00 |
| 6 | 56002739 | 1 | Scr, Hex Hd 3/4-16 x 1.25 |
| 7 | 56002807 | 4 | Scr, Hex Hd SS 1/4-20 x .75 |
| 8 | 56002843 | 4 | Nut, Hex Nyl Loc-Thin 1/2-13 |
| 9 | 56002850 | 6 | Nut, Hex Nyl Loc-Thin SS 1/4-20 |
| 10 | 56002863 | 1 | Nut, Hex Nyl Loc 3/4-16 |
| 11 | 56002901 | 2 | Scr, Hex Hd SS 1/4-20 x 1.50 |
| 12 | 56003005 | 1 | Scr, Hex Hd 5/16-18 x 1.75 |
| 13 | 56009022 | 2 | Wsh, Flt .75 x 1.25 x .12 |
| 14 | 56392217 | 2 | Wheel Bracket |
| 15 | 56262679 | 1 | Squeegee Mount TSB 655, TSB 668 |
| 16 | 56262677 | 1 | Squeegee Tongue Weld't TSB 668 |
| 17 | 56324515 | 2 | Wheel TSB 655 |
| 18 | 56360627 | 4 | Bushing |
| 19 | 56391864 | 1 | Ball Joint |
| 20 | 56391860 | 1 | Lifter Weld't |
| 21 | 56478781 | 4 | Bearing, Sleeve |
| 22 | 56001878 | 1 | Scr, Hex Hd 1/4-20 x 1.25 |
| 23 | 56002708 | 2 | Nut, Hex Nyl Loc 1/4-20 |

BA 700 Before SN 1082069

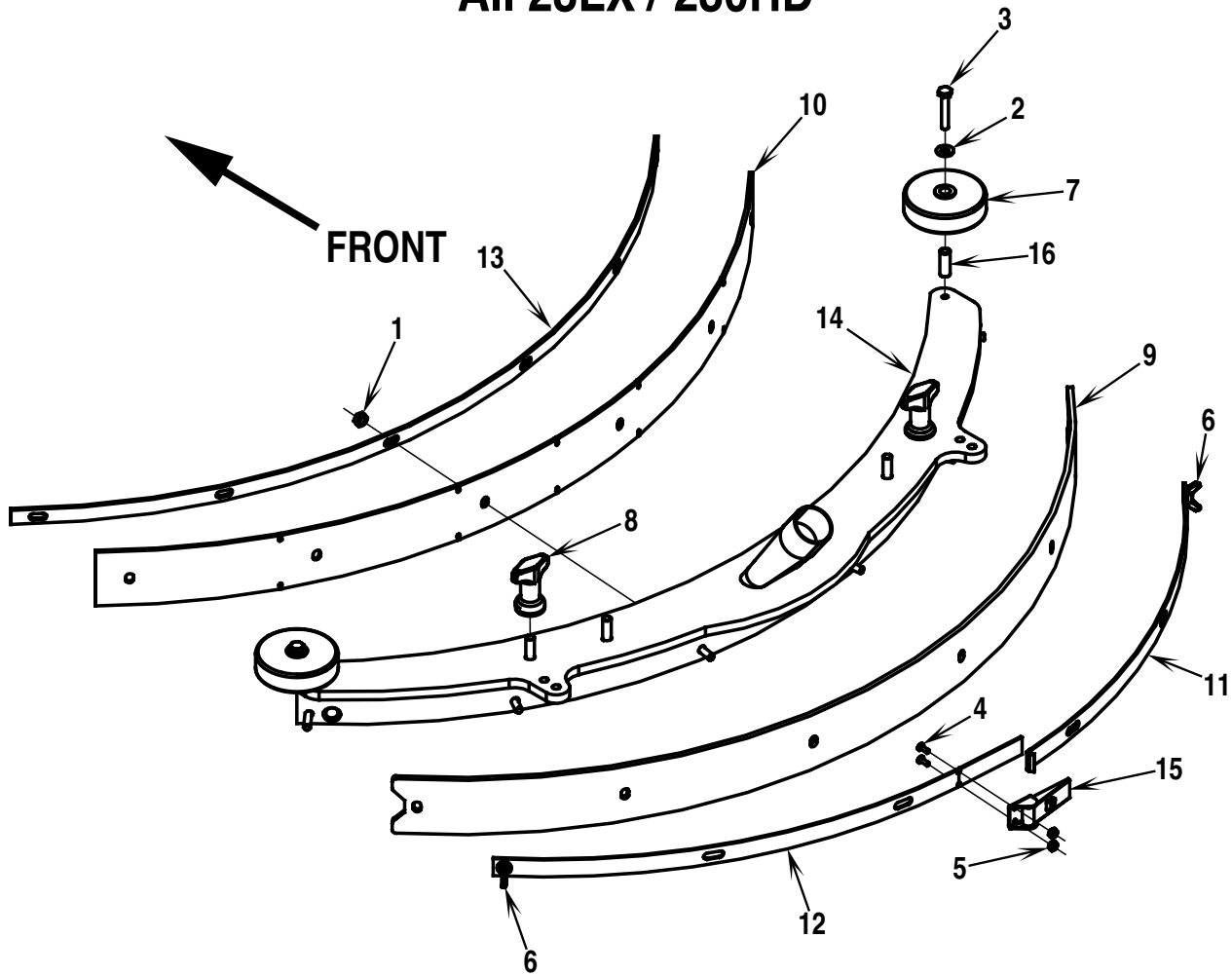


| | | | | |
|-------|------------------------------|---------------|--------------|-----------|
| 95-4 | SQUEEGEE ASSEMBLY-1 | BOOK E | | |
| 00-12 | 28LX / 280HD / BA 700 | E | 5.6.1 | 31 |

| Item | Ref. No. | Qty | Description |
|------|----------|-----|---|
| | 56391281 | 1 | Squeegee Assembly (#1-19) |
| 1 | 56002850 | 12 | Nut, Hex Nyl Loc-Thin SS 1/4-20 |
| 2 | 56002807 | 4 | Scr, Hex Hd SS 1/4-20 x .75 |
| 3 | 56002859 | 2 | Wsh, Flt SAE SS 1/4 |
| 4 | 56002901 | 4 | Scr, Hex Hd SS 1/4-20 x 1.50 |
| 5 | 56002909 | 2 | Scr, Pan Phil SS 6-32 x .38 |
| 6 | 56002964 | 2 | Nut, Hex Nyl Loc-Thin SS 6-32 |
| 7 | 56002963 | 2 | Nut, Wing Loc 1/4-20 |
| 8 | 56324350 | 2 | Wheel |
| 9 | 56324499 | 2 | Wheel |
| 10 | 56370711 | 2 | Nut, Thumb |
| 11 | 56391286 | 1 | Strap, Rear Right |
| 12 | 56391288 | 1 | Strap, Rear Left |
| 13 | 56391290 | 1 | Strap, Front |
| 14 | 56391292 | 1 | Tool Weld't |
| 15 | 56391333 | 1 | Blade, Rear (standard/gum rubber) |
| | 56391343 | 1 | Blade, Rear (oil resistant/neoprene) |
| 16 | 56391334 | 1 | Blade, Front (standard/gum rubber) |
| | 56391355 | 1 | Blade, Front (oil resistant/neoprene) |
| 17 | 56409656 | 2 | Bracket, Wheel |
| 18 | 56471194 | 1 | Latch Assembly |
| 19 | 56471220 | 4 | Bushing |
| | 56391340 | 1 | Standard Blade Kit (gum rubber/#15-16) |
| | 56391342 | 1 | Oil Resistant Blade Kit (neoprene/#15-16) |

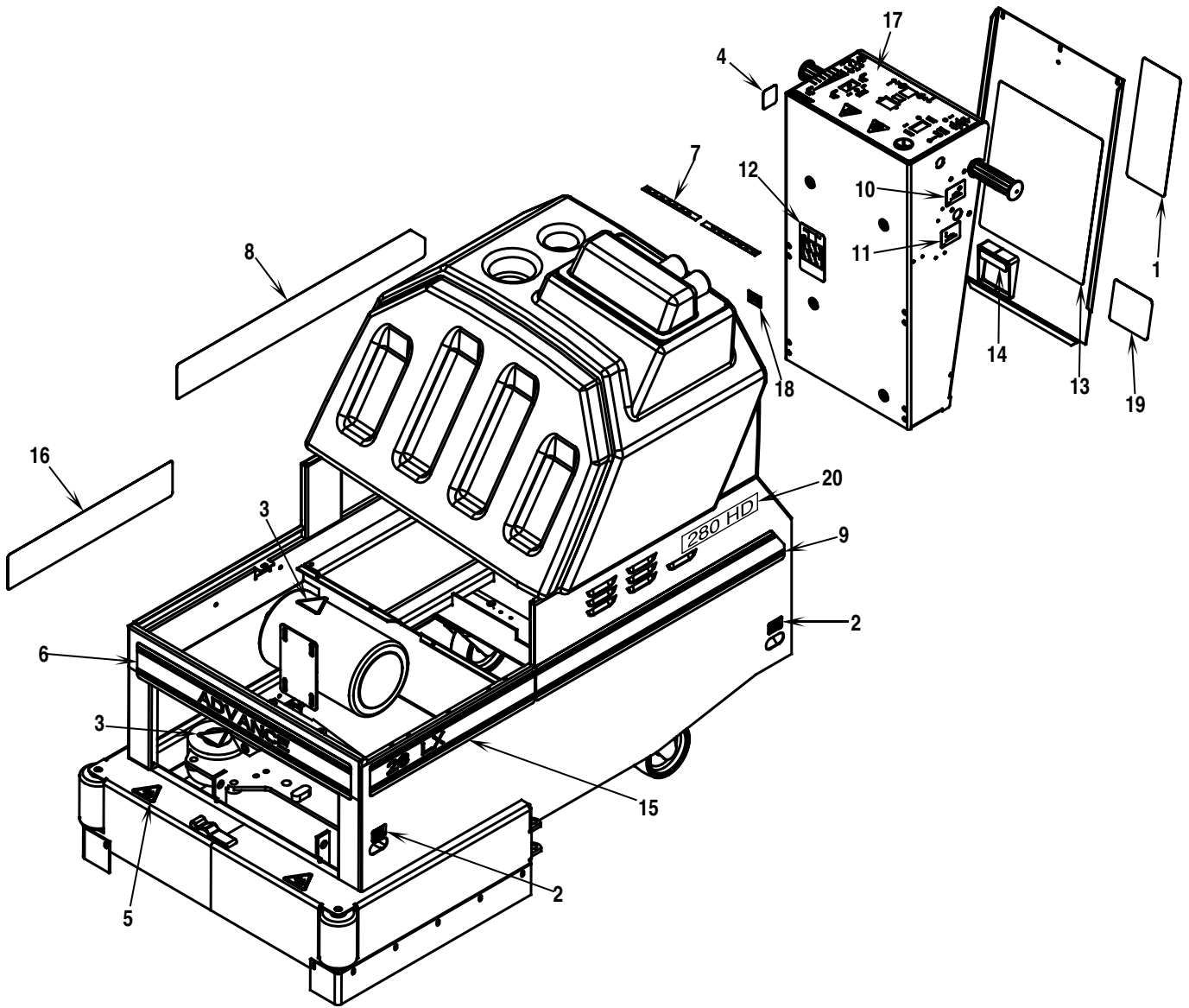
* = Not Shown

**BA 700 After SN 1082068
All 28LX / 280HD**



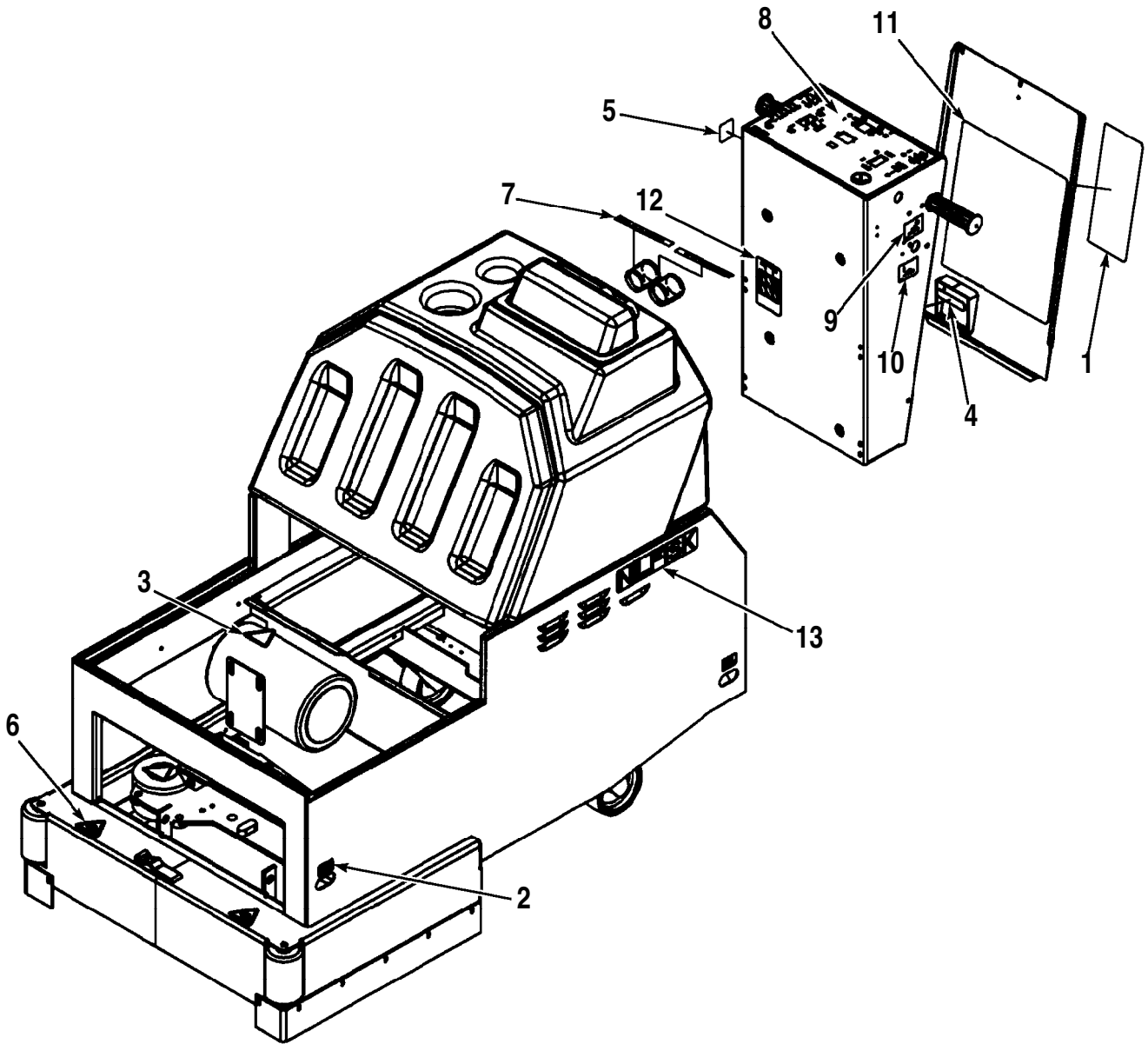
| | | | | |
|-------|------------------------------|---------------|--------------|-----------|
| 95-4 | SQUEEGEE ASSEMBLY | BOOK E | | |
| 00-12 | 28LX / 280HD / BA 700 | E | 5.6.1 | 33 |

| Item | Ref. No. | Qty | Description |
|------|----------|-----|--|
| | 56391295 | 1 | Squeegee Assembly (#1-16) |
| 1 | 56002850 | 6 | Nut, Hex Nyl Loc-Thin SS 1/4-20 |
| 2 | 56002859 | 2 | Wsh, Flt SAE SS 1/4 |
| 3 | 56002901 | 2 | Scr, Hex Hd SS 1/4-20 x 1.50 |
| 4 | 56002909 | 2 | Scr, Pan Phil SS 6-32 x .38 |
| 5 | 56002964 | 2 | Nut, Hex Nyl Loc-Thin SS 6-32 |
| 6 | 56009048 | 2 | Nut, Wing Loc 1/4-20 |
| 7 | 56324499 | 2 | Wheel 3.00 |
| 8 | 56370711 | 2 | Nut, Thumb |
| 9 | 56391333 | 1 | Blade, Rear (standard) |
| | 56391343 | 1 | Blade, Rear (oil resistant) |
| 10 | 56391334 | 1 | Blade, Front (standard) |
| | 56391355 | 1 | Blade, Front (oil resistant) |
| 11 | 56391286 | 1 | Strap, Rear Right |
| 12 | 56391288 | 1 | Strap, Rear Left |
| 13 | 56391290 | 1 | Strap, Front |
| 14 | 56391292 | 1 | Squeegee Tool |
| 15 | 56471194 | 1 | Latch |
| 16 | 56471220 | 2 | Bushing |
| | 56391340 | 1 | Standard Squeegee Blade Kit (#9-10) |
| | 56391342 | 1 | Oil Resistant Squeegee Blade Kit (#9-10) |



| | | | | |
|-------|-------------------------------|---------------|--------------|-----------|
| 95-4 | DECAL SYSTEM (Advance) | BOOK E | | |
| 00-12 | 28LX / 280HD / BA 700 | E | 5.6.1 | 35 |

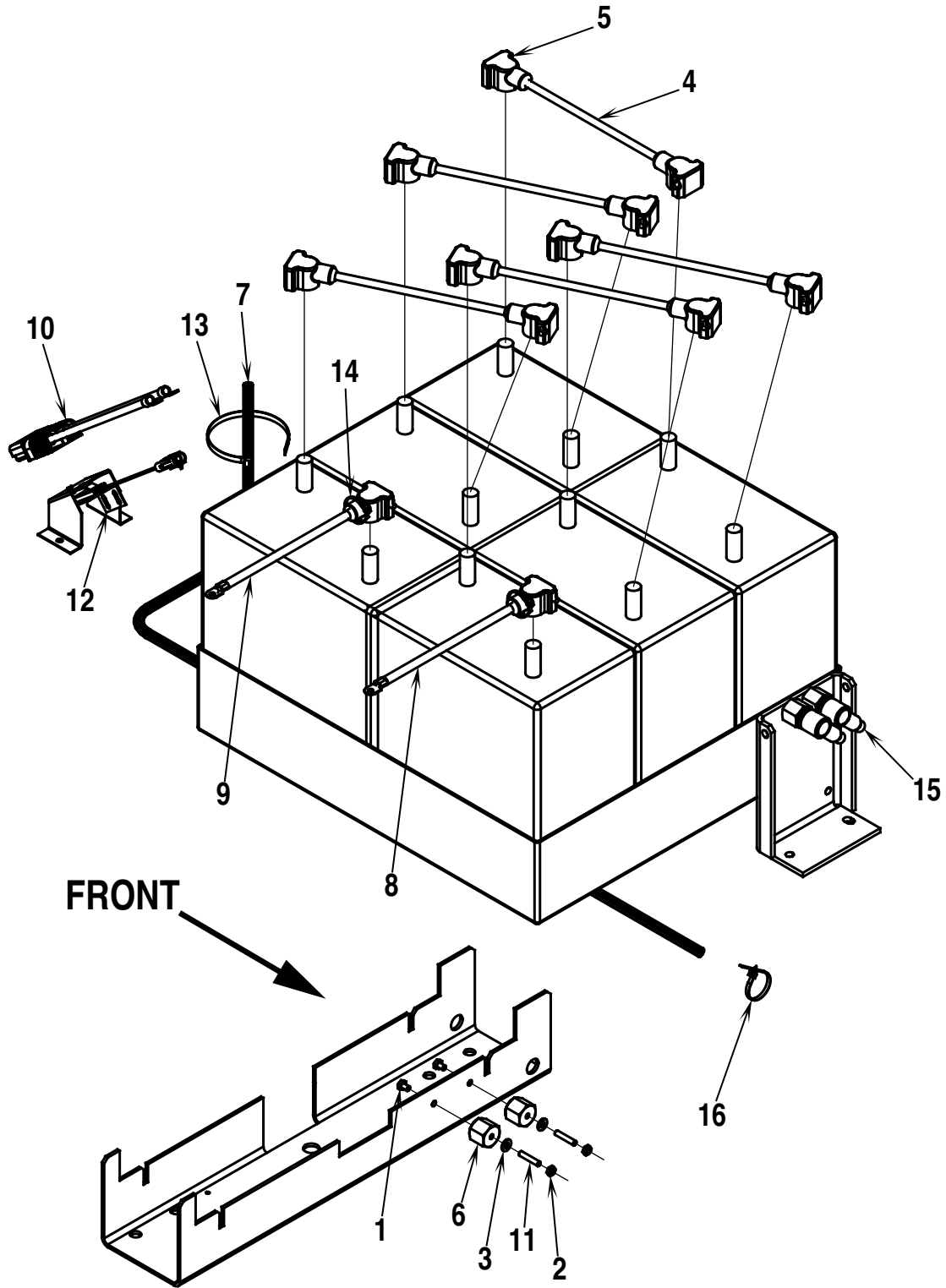
| Item | Ref. No. | Qty | Description |
|------|----------|-----|--|
| 1 | 56014601 | 1 | Decal, Caution |
| 2 | 56015370 | 4 | Decal, Tie Down |
| 3 | 56015464 | 2 | Decal, Hand Entanglement |
| 4 | 56015469 | 1 | Decal, Brake Release |
| 5 | 56015506 | 2 | Decal, Rotating Brush Hazard |
| 6 | 56015532 | 1 | Decal, Front (all 28LX / 280HD only before SN 1192077) |
| 7 | 56015655 | 2 | Decal, Direction |
| 8 | 56015688 | 1 | Decal, Stripe Rear Right (all 28LX / 280HD only before SN 1192077) |
| 9 | 56015689 | 1 | Decal, Stripe Rear Left (all 28LX / 280HD only before SN 1192077) |
| 10 | 56015711 | 1 | Decal, Squeegee Up |
| 11 | 56015712 | 1 | Decal, Squeegee Down |
| 12 | 56015765 | 1 | Decal, Cable Routing |
| 13 | 56015777 | 1 | Decal, Wiring |
| 14 | 56015779 | 1 | Decal, Circuit Breakers |
| 15 | 56015799 | 1 | Decal, Stripe Front Left - 28LX |
| | 56015783 | 1 | Decal, Stripe Front Left - 280HD (before SN 1192077) |
| 16 | 56015800 | 1 | Decal, Stripe Front Right - 28LX |
| | 56015787 | 1 | Decal, Stripe Front Right - 280HD (before SN 1192077) |
| 17 | 56015801 | 1 | Decal, Control Panel |
| 18 | 56016324 | 1 | Decal, Charger |
| 19 | 56016036 | 1 | Decal, Wear Items - 280HD |
| 20 | 56015994 | 2 | Decal, 280HD (after SN 1192076) |



| | | | | |
|-------|-------------------------------|---------------|--------------|-----------|
| 95-4 | DECAL SYSTEM (Nilfisk) | BOOK E | | |
| 00-12 | 28LX / 280HD / BA 700 | E | 5.6.1 | 37 |

| Item | Ref. No. | Qty | Description |
|------|----------|-----|------------------------------|
| 1 | 56014601 | 1 | Decal, Caution |
| 2 | 56015370 | 4 | Decal, Tie Down |
| 3 | 56015464 | 2 | Decal, Hand Entanglement |
| 4 | 56015465 | 1 | Decal, Circuit Breakers |
| 5 | 56015469 | 1 | Decal, Brake Release |
| 6 | 56015506 | 2 | Decal, Rotating Brush Hazard |
| 7 | 56015655 | 2 | Decal, Direction |
| 8 | 56015700 | 1 | Decal, Control Panel |
| 9 | 56015711 | 1 | Decal, Squeegee Up |
| 10 | 56015712 | 1 | Decal, Squeegee Down |
| 11 | 56015764 | 1 | Decal, Wiring |
| 12 | 56015765 | 1 | Decal, Cable Routing |
| 13 | 56015766 | 2 | Decal, Nilfisk |

BA 700 Before SN 1082069



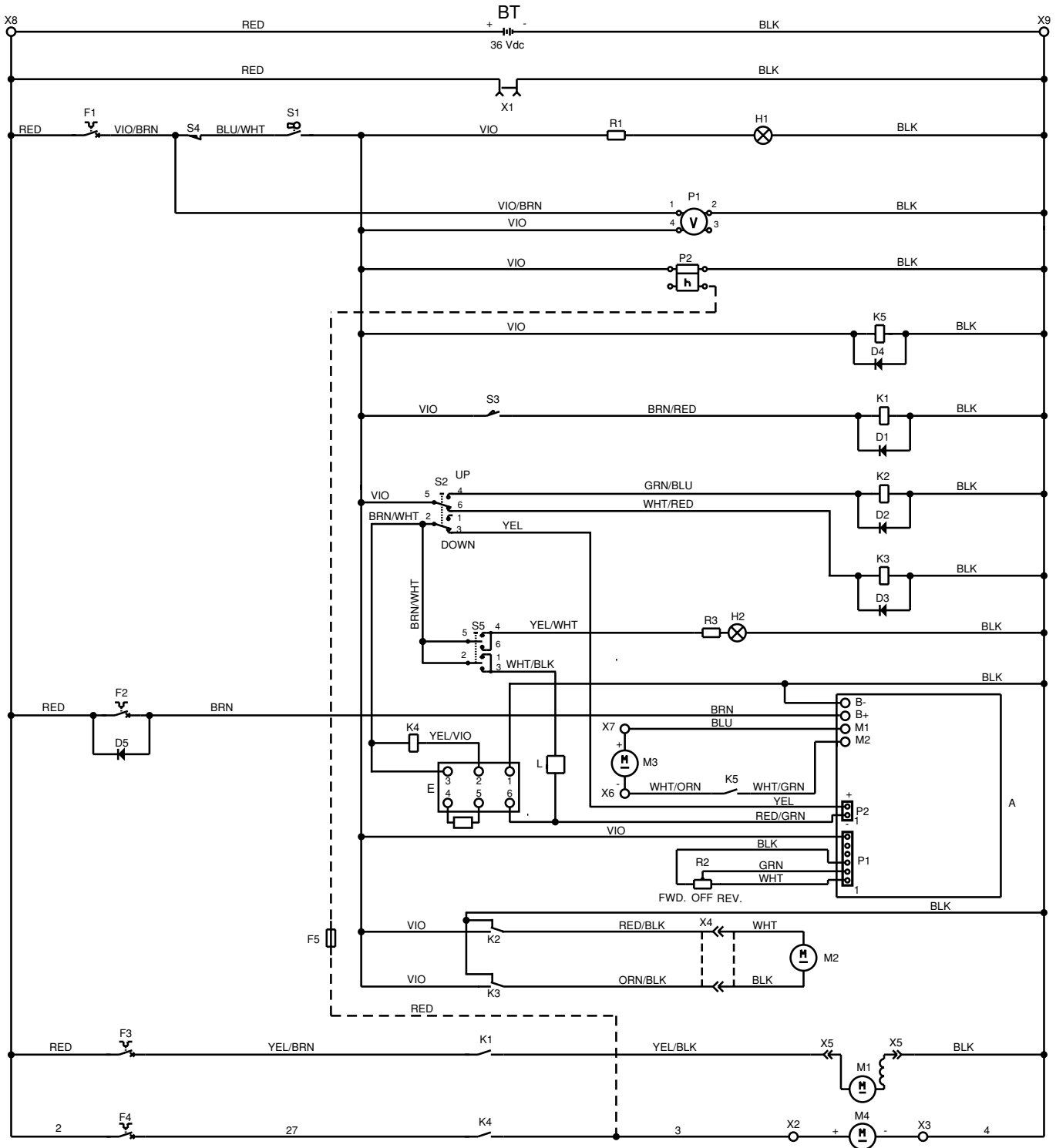
| | | | | |
|-------|------------------------------|---------------|--------------|-----------|
| 95-4 | ELECTRICAL SYSTEM-1 | BOOK E | | |
| 00-12 | 28LX / 280HD / BA 700 | E | 5.6.1 | 39 |

| Item | Ref. No. | Qty | Description |
|------|----------|-----|--|
| 1 | 56001861 | 2 | Scr, Hex Hd 1/4-20 x .38 |
| 2 | 56002040 | 2 | Nut, Hex Jam 1/4-20 |
| 3 | 56009064 | 2 | Wsh, Int Shprf 1/4 |
| 4 | 56363936 | 5 | Cable Assembly 4 x 15 TSB 730 |
| 5 | 56372673 | 12 | Boot, Battery Post |
| 6 | 56469858 | 2 | Standoff, Insulated |
| 7 | 56392154 | 1 | Harness, Wiring |
| 8 | 56392155 | 1 | Cable Assembly 4 x 52 TSB 730 |
| 9 | 56392156 | 1 | Cable Assembly 4 x 52 TSB 730 |
| 10 | 56392159 | 1 | Connector Assembly (Charger Plug) |
| 11 | 56454376 | 2 | Stud, 1/4-20 |
| 12 | 56462362 | 1 | Switch Assembly (Charger Interlock) |
| 13 | 56477613 | 10 | Tie, Cable |
| 14 | 56478246 | 24 | Tie, Cable |
| 15 | 56493357 | 2 | Insulator, Terminal |
| 16 | 56900753 | 2 | Tie, Push Mount |

| | | | | |
|-------|------------------------------|---------------|--------------|-----------|
| 95-4 | ELECTRICAL SYSTEM-2 | BOOK E | | |
| 00-12 | 28LX / 280HD / BA 700 | E | 5.6.1 | 41 |

| Item | Ref. No. | Qty | Description |
|------|----------|-----|--|
| 1 | 56001861 | 2 | Scr, Hex Hd 1/4-20 x .38 |
| 2 | 56002040 | 2 | Nut, Hex Jam 1/4-20 |
| 3 | 56009064 | 2 | Wsh, Int Shprf 1/4 |
| 4 | 56363936 | 5 | Cable Assembly 4 x 15 TSB 730 |
| 5 | 56372673 | 12 | Boot, Battery Post |
| 6 | 56392155 | 1 | Cable Assembly 4 x 52 TSB 730 |
| 7 | 56392156 | 1 | Cable Assembly 4 x 52 TSB 730 |
| 8 | 56392159 | 1 | Connector Assembly |
| 9 | 56392197 | 1 | Harness, Wiring |
| 10 | 56454376 | 2 | Stud, 1/4-20 |
| 11 | 56462362 | 1 | Switch Assembly (Charger Interlock) |
| 12 | 56469858 | 2 | Standoff, Insulated |
| 13 | 56477613 | 10 | Tie, Cable |
| 14 | 56478246 | 24 | Tie, Cable |
| 15 | 56900753 | 2 | Tie, Push Mount |

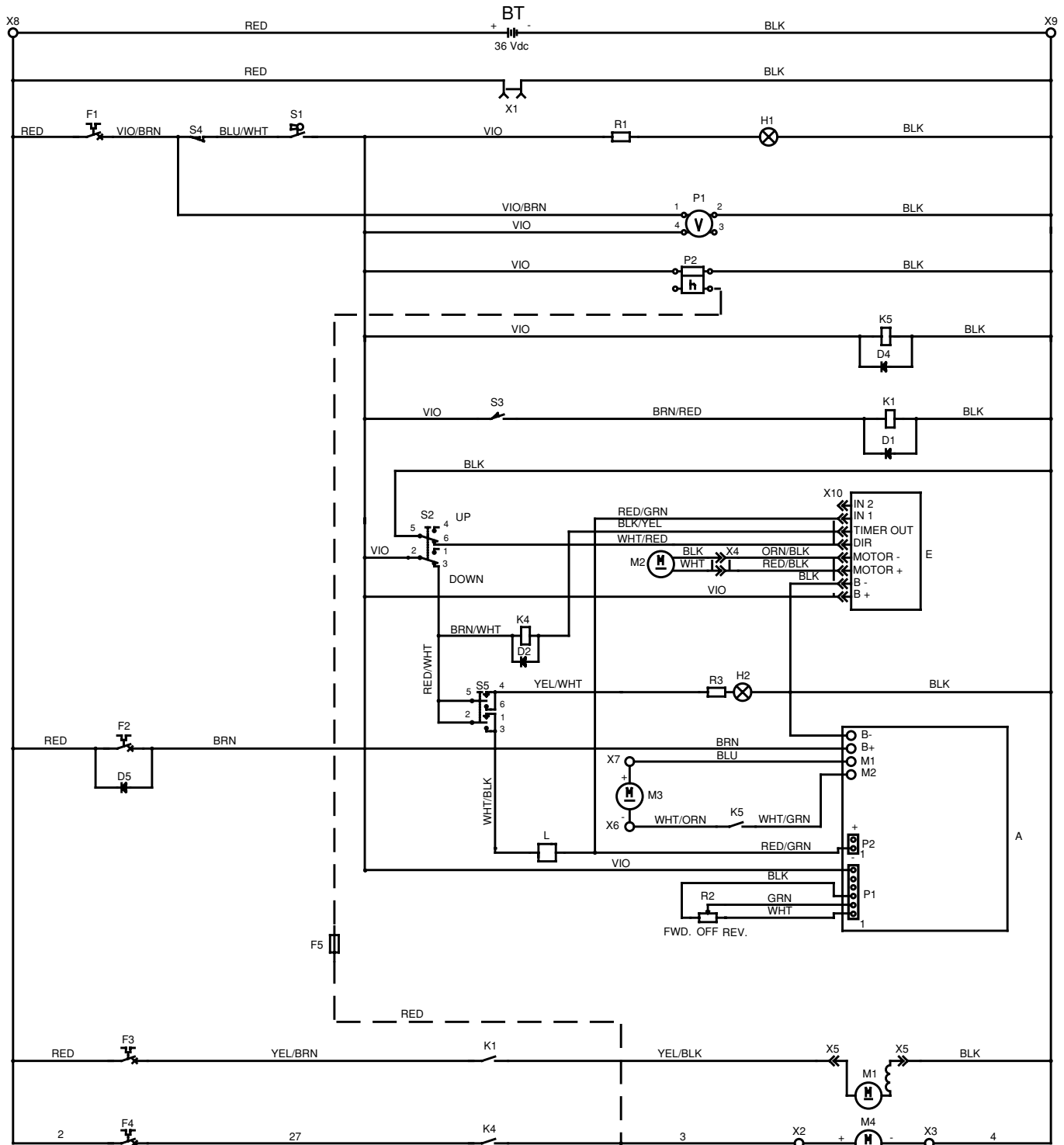
BA 700 Before SN 1082069



| | | | | |
|------|------------------------------|---------------|--------------|-----------|
| 95-4 | WIRING DIAGRAM-1 | BOOK E | | |
| 01-2 | 28LX / 280HD / BA 700 | E | 5.6.1 | 43 |

| Item | Ref. No. | Qty | Description |
|------|----------|-----|--|
| A | 56391210 | 1 | Speed Controller |
| BT | | 6 | Battery 6V |
| D1 | 56389265 | 1 | Suppression Diode |
| D2 | 56389265 | 1 | Suppression Diode |
| D3 | 56389265 | 1 | Suppression Diode |
| D4 | 56389265 | 1 | Suppression Diode |
| D5 | | | Regenerative Feedback Diode |
| E | 56391357 | 1 | Time Delay Module |
| F1 | 56387328 | 1 | 5 Amp Circuit Breaker (Control Circuit) |
| F2 | 56469788 | 1 | 25 Amp Circuit Breaker (Wheel Drive) |
| F3 | 56469788 | 1 | 25 Amp Circuit Breaker (Vacuum Motor) |
| F4 | 56454429 | 1 | 70 Amp Circuit Breaker (Brush Motor) |
| F5 | | | 4 Amp Fuse |
| H1 | 56389434 | 1 | Green Indicator Light |
| H2 | 56324028 | 1 | Blue Indicator Light |
| K1 | 56395452 | 1 | Vacuum Motor Solenoid |
| K2 | 56388534 | 1 | Actuator Motor Up Solenoid |
| K3 | 56388534 | 1 | Actuator Motor Down Solenoid |
| K4 | 56395452 | 1 | Brush Motor Solenoid |
| K5 | 56395452 | 1 | Wheel Drive Motor Solenoid |
| L | 56392161 | 1 | Solenoid Valve |
| M1 | 56391208 | 1 | Vacuum Motor |
| M2 | 56391627 | 1 | Actuator Motor |
| M3 | 56388585 | 1 | Wheel Drive Motor |
| M4 | 56409126 | 1 | Brush Motor |
| P1 | 56393717 | 1 | Battery Fuel Gauge |
| P2 | | | Hour Meter (optional) |
| R1 | | | 330 Ohm Resistor |
| R2 | 56454740 | 1 | 5K Ohm Potentiometer |
| R3 | | | 330 Ohm Resistor |
| S1 | 56301636 | 1 | Main Switch |
| S2 | 56393312 | 1 | Brush Switch |
| S3 | 56324362 | 1 | Vacuum Motor Switch |
| S4 | 56462362 | 1 | Charger Interlock Switch |
| S5 | 56324272 | 1 | Solution Switch TSB 663 |
| X1 | 56392159 | 1 | Charger Connector |
| X2 | | | Brush Motor + Terminal Stud |
| X3 | | | Brush Motor - Terminal Stud |
| X4 | | | Actuator Motor Connector |
| X5 | | | Vacuum Motor Connector |
| X6 | | | Wheel Drive Motor - Terminal Stud |
| X7 | | | Wheel Drive Motor + Terminal Stud |
| X8 | | | + Terminal Stud |
| X9 | | | - Terminal Stud |

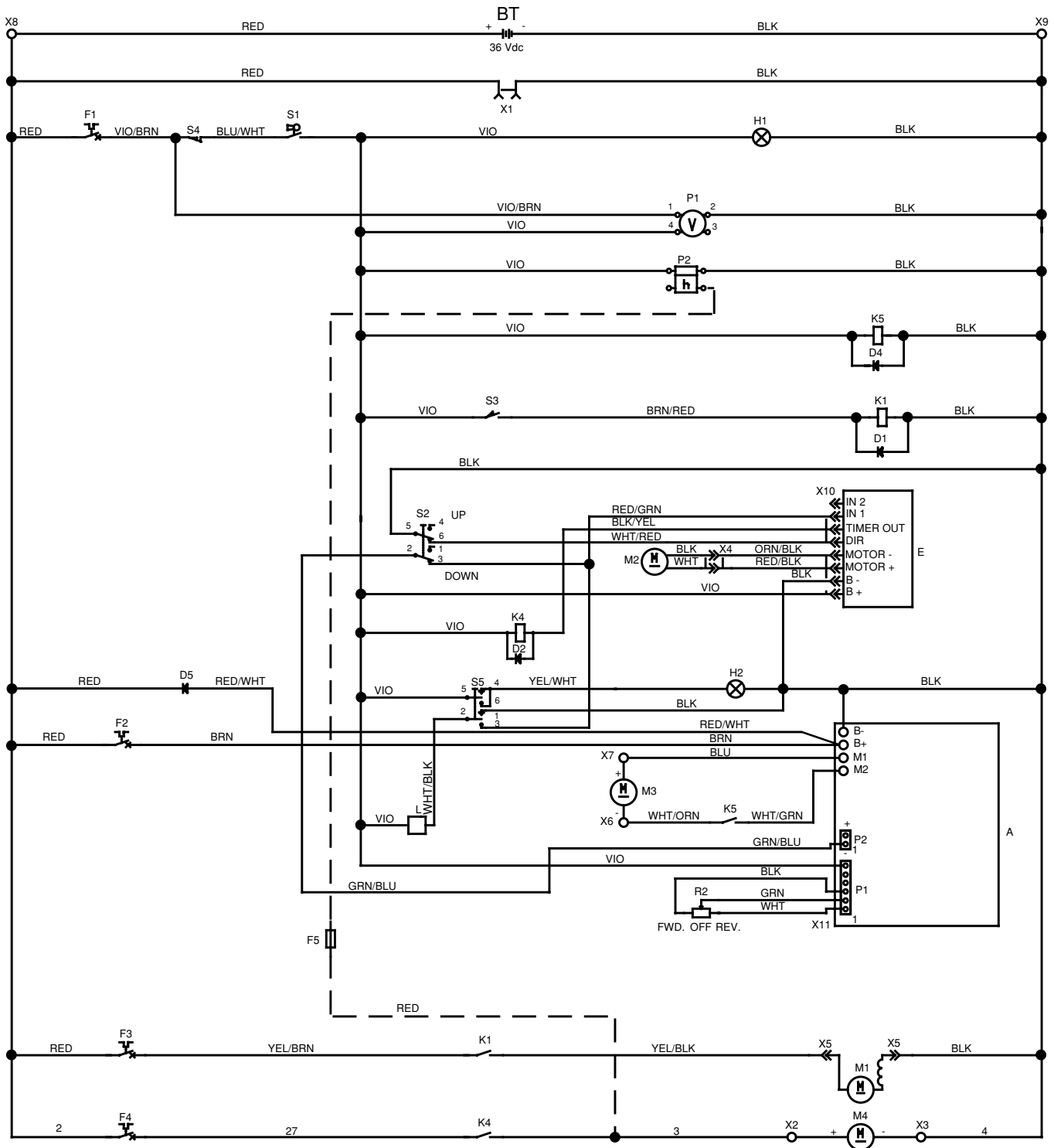
BA 700 Before SN 1082119 28LX / 280HD Before SN 1082119



| | | | | |
|------|------------------------------|---------------|--------------|-----------|
| 95-4 | WIRING DIAGRAM-2 | BOOK E | | |
| 01-2 | 28LX / 280HD / BA 700 | E | 5.6.1 | 45 |

| Item | Ref. No. | Qty | Description |
|------|----------|-----|--|
| A | 56391210 | 1 | Speed Controller |
| BT | | 6 | Battery 6V |
| D1 | 56389265 | 1 | Suppression Diode |
| D2 | 56389265 | 1 | Suppression Diode |
| D4 | 56389265 | 1 | Suppression Diode |
| D5 | | | Regenerative Feedback Diode |
| E | 56392173 | 1 | Actuator Control Module |
| F1 | 56387328 | 1 | 5 Amp Circuit Breaker (Control Circuit) |
| F2 | 56469788 | 1 | 25 Amp Circuit Breaker (Wheel Drive) |
| F3 | 56469788 | 1 | 25 Amp Circuit Breaker (Vacuum Motor) |
| F4 | 56409230 | 1 | 80 Amp Circuit Breaker (Brush Motor) |
| F5 | | | 4 Amp Fuse |
| H1 | 56389434 | 1 | Green Indicator Light |
| H2 | 56324028 | 1 | Blue Indicator Light |
| K1 | 56395452 | 1 | Vacuum Motor Solenoid |
| K4 | 56395450 | 1 | Brush Motor Solenoid |
| K5 | 56395452 | 1 | Wheel Drive Motor Solenoid |
| L | 56392161 | 1 | Solenoid Valve |
| M1 | 56391208 | 1 | Vacuum Motor |
| M2 | 56391627 | 1 | Actuator Motor |
| M3 | 56388585 | 1 | Wheel Drive Motor |
| M4 | 56409126 | 1 | Brush Motor |
| P1 | 56393717 | 1 | Battery Fuel Gauge |
| P2 | | | Hour Meter (optional) |
| R1 | | | 330 Ohm Resistor |
| R2 | 56454740 | 1 | 5K Ohm Potentiometer |
| R3 | | | 330 Ohm Resistor |
| S1 | 56301636 | 1 | Main Switch |
| S2 | 56393312 | 1 | Brush Switch |
| S3 | 56324362 | 1 | Vacuum Motor Switch |
| S4 | 56462362 | 1 | Charger Interlock Switch |
| S5 | 56324272 | 1 | Solution Switch TSB 663 |
| X1 | 56392159 | 1 | Charger Connector |
| X2 | | | Brush Motor + Terminal Stud |
| X3 | | | Brush Motor - Terminal Stud |
| X4 | | | Actuator Motor Connector |
| X5 | | | Vacuum Motor Connector |
| X6 | | | Wheel Drive Motor - Terminal Stud |
| X7 | | | Wheel Drive Motor + Terminal Stud |
| X8 | | | + Terminal Stud |
| X9 | | | - Terminal Stud |
| X10 | | | Actuator Control Module Connector |
| X11 | | | Speed Controller Connector |

All Models After SN 1082118



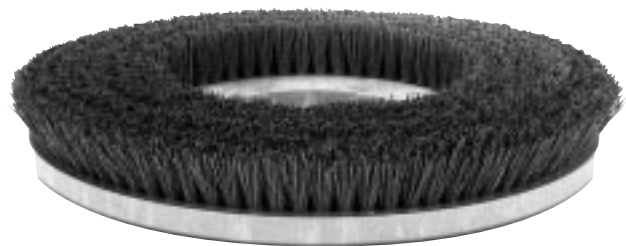
| | | | | |
|------|------------------------------|---------------|--------------|-----------|
| 95-4 | WIRING DIAGRAM-3 | BOOK E | | |
| 01-2 | 28LX / 280HD / BA 700 | E | 5.6.1 | 47 |

| Item | Ref. No. | Qty | Description |
|------|----------|-----|--|
| A | 56391210 | 1 | Speed Controller |
| BT | | 6 | Battery 6V |
| D1 | 56389265 | 1 | Suppression Diode |
| D2 | 56389265 | 1 | Suppression Diode |
| D4 | 56389265 | 1 | Suppression Diode |
| D5 | | | Regenerative Feedback Diode |
| E | 56392173 | 1 | Actuator Control Module |
| F1 | 56387328 | 1 | 5 Amp Circuit Breaker (Control Circuit) |
| F2 | 56469788 | 1 | 25 Amp Circuit Breaker (Wheel Drive) |
| F3 | 56469788 | 1 | 25 Amp Circuit Breaker (Vacuum Motor) |
| F4 | 56409230 | 1 | 80 Amp Circuit Breaker (Brush Motor) |
| F5 | | | 4 Amp Fuse |
| H1 | 56389434 | 1 | Green Indicator Light |
| H2 | 56324028 | 1 | Blue Indicator Light |
| K1 | 56395452 | 1 | Vacuum Motor Solenoid |
| K4 | 56395450 | 1 | Brush Motor Solenoid |
| K5 | 56395452 | 1 | Wheel Drive Motor Solenoid |
| L | 56392161 | 1 | Solenoid Valve |
| M1 | 56391208 | 1 | Vacuum Motor |
| M2 | 56391627 | 1 | Actuator Motor |
| M3 | 56388585 | 1 | Wheel Drive Motor |
| M4 | 56409126 | 1 | Brush Motor |
| P1 | 56393717 | 1 | Battery Fuel Gauge |
| P2 | | | Hour Meter (optional) |
| R2 | 56454740 | 1 | 5K Ohm Potentiometer |
| S1 | 56301636 | 1 | Main Switch |
| S2 | 56393312 | 1 | Brush Switch |
| S3 | 56324362 | 1 | Vacuum Motor Switch |
| S4 | 56462362 | 1 | Charger Interlock Switch |
| S5 | 56324272 | 1 | Solution Switch TSB 663 |
| X1 | 56392159 | 1 | Charger Connector |
| X2 | | | Brush Motor + Terminal Stud |
| X3 | | | Brush Motor - Terminal Stud |
| X4 | | | Actuator Motor Connector |
| X5 | | | Vacuum Motor Connector |
| X6 | | | Wheel Drive Motor - Terminal Stud |
| X7 | | | Wheel Drive Motor + Terminal Stud |
| X8 | | | + Terminal Stud |
| X9 | | | - Terminal Stud |
| X10 | | | Actuator Control Module Connector |
| X11 | | | Speed Controller Connector |

We manufacture brushes and pad holders that will give you the best possible performance between machine and floor. Following are descriptions of the materials and their applications when used on the BA 700.

- Union Mix:** Medium grade natural fibers for polishing finished floors with standard-speed equipment. Recommended for use in place of white pads.
- ProLite:** Bristles are made from light-duty polypropylene for general scrubbing when you do not want to scratch or remove finish from the floor. Recommended for use in place of red pads.
- Prolene:** Polypropylene material for medium-duty scrubbing on concrete, terrazzo and vinyl floor tile. Recommended for use in place of green or blue pads.
- Magna Grit:** For extreme heavy-duty scrubbing or stripping of floors. This brush has extra large diameter silicon carbide grit impregnated synthetic bristles. Recommended for use in place of black pads.
- Dyna Grit:** For aggressive, heavy-duty scrubbing or stripping of floors. Recommended for use in place of brown pads.
- MidLite Grit:** For general purpose scrubbing of sealed or unsealed concrete, stone, terrazzo, quarry tile and other resilient hard floor surfaces. Recommended for use in place of green or blue pads.
- MidGrit:** For general purpose scrubbing when you need a lighter action for sealed or unsealed concrete, stone, terrazzo, quarry tile and other resilient hard floor surfaces. Recommended for use in place of green or blue pads.
- AgLite Grit:** For light scrubbing when used wet; buffing or polishing when used dry on urethane coated, sealed concrete or other resilient hard surface floors. Recommended for use in place of red or white pads.
- Short Trim Pad Holder:** Made with a structural foam block and center ring for correct pad centering. It has a "shower feed" design for getting solution to the floor.

- Ref. No.:** 56505776 - Union Mix
 56505774 - Prolene
 56505772 - Dyna Grit
 56505777 - MidGrit
 56505750 - Short Trim Pad Holder
 56505755 - ProLite
 56505751 - Magna Grit
 56505758 - MidLite Grit
 56505753 - AgLite Grit



DANMARK

Nilfisk-Advance Nordic A/S
 Myntevej 3, 8900 Randers
 ☎ 86 42 84 33 – Fax 86 41 19 55

NORGE

Nilfisk-Advance AS
 Enebakkn, 119, 0680 Oslo, Postboks 196, Manglerud,
 0612 Oslo
 ☎ 22 08 63 50 – Fax 22 08 63 63
 Distriktsrepresentanter over hele landet

SVERIGE

Nilfisk-Advance AB
 Sjöbjörnsvägen 5, 117 67 Stockholm
 ☎ 085 55 944 00 – Fax 085 55 944 30

FINLAND/ SUOMI

Oy Tecalemit AB
 Hankasuontie 13, 00390 Helsinki
 ☎ (89) 547 701 – Fax (89) 547 1779

AUSTRALIA

Nilfisk-Advance Pty. Ltd.
 ACN 003 762 623
 Head office: 17 Leeds Street, Rhodes, N. S. W. 2138
 ☎ (02) 9736 1244 – Fax (02) 9736 3910
 Customer Responce Centre:
 ☎ 1 800 011 013

BELGIQUE / BELGIË/ LUXEMBOURG

Nilfisk-Advance s.a./n.v.
 Doornveld/ Sphere Business Park
 Industrie Asse 3, nr 11 – bus 41
 1731 Zellik-Asse
 ☎ (02) 467.60.50 Fax (02) 463.44.16

CANADA

Nilfisk-Advance Ltd.
 396 Watline Avenue
 Mississauga, Ontario L4Z 1X
 ☎ (905) 712-3260 – Fax (905) 712-3255

DEUTSCHLAND

Nilfisk-Advance AG
 Siemensstraße 25-27
 25462 Rellingen
 ☎ (041 01) 3990 – Fax (04101) 399191
 Zentraler Kundenservice
 ☎ für die Industrie: 0180 535 67 97
 ☎ Institutionen und Gebäudereiniger: 0180 500 11 70

FRANCE

Nilfisk-Advance S.A.
 BP 246
 91944 Courtaboeuf Cedex
 ☎ (01) 69.59.87.00 Télécopie (01) 69.59.87.01

HONG KONG

Nilfisk-Advance Ltd.
 2001, 20/F HK Worsted Mills
 Industrial Building
 31-39 Wo Tong Tsui Street
 Kwai Chung, N.T.
 ☎ 2427 59 51 – Fax 2487 5828

IRELAND

Nilfisk-Advance Ltd.
 28 Sandyford Office Park
 Dublin 18
 ☎ +353 1 2943838 – Fax +353 1 2943845

JAPAN

Nilfisk-Advance Inc.
 3-4-9 Chigasaki Minami
 Tsuzuki-Ku Yokohama 224
 ☎ 045-942-7741 – Fax 045-942-6545

MALAYSIA

Nilfisk-Advance Sdn Bhd
 Lot 2, 1st. Floor
 Lorong 19/1A
 46300 Petaling Jaya
 Selangor Darul Ehsan
 ☎ 03-7568188 / 03-7568189 / 03-7568388 – Fax 03-7566828

NEDERLAND

Nilfisk-Advance B.V.
 Flevolaan 7, Postbus 341
 1380 AH Weesp
 ☎ 0294-462121 – Fax 0294-430053

NEW ZEALAND

Nilfisk-Advance Limited
 477 Great South Road, Penrose
 Auckland
 ☎ (09) 525 0092 – Fax (09) 525 6440

SCHWEIZ / SUISSE

Nilfisk-Advance AG
 Ringstrasse 19, 9533 Kirchberg/Wil
 ☎ 719 23 52 83 – Fax 719 23 84 44

SINGAPORE

Nilfisk-Advance Pte. Ltd.
 10, Woodlands Loop
 Singapore 738388
 ☎ (65) 759 9100 – Fax (65) 759 9133

TAIWAN

Nilfisk-Advance Ltd.
 1 F, No.23, Lane 132, Sec. 2
 Ta An Road, Taipei
 ☎ 700 22 68 – Fax 784 08 43

UNITED KINGDOM

Nilfisk-Advance Limited
 Newmarket Road
 Bury St. Edmunds
 Suffolk IP 33 3SR
 ☎ (01284) 763163 – Fax (01284) 750562

USA

Nilfisk-Advance Inc.
 14600 21st Avenue North
 Plymouth, MN 55447-3408
 ☎ +1 800 989 2235 – Fax 1 800 989 6566

Nilfisk-Advance of America, Inc.
 300 Technology Drive
 Malvern, PA 19355
 ☎ (610) 647 647-6427

ÖSTERREICH

Nilfisk-Advance GmbH
 Vorarlberg Allee 46
 1230 Wien
 ☎ 1 616 58 30 – Fax 1 616 58 30 40

ESPAÑA

Nilfisk-Advance, S.A.
 Torre D'Ara
 Passeig del Rengle, 5 Pl.9-10
 E-08302 – Mataró (Barcelona)
 ☎ Tel. 93 741 24 00 – Fax: 93 757 80 20
 Central atención al cliente: 902 200 201
nilfisk@nilfisk-advance.es – www.nilfisk-advance.com
 Distribuidores y Servicio Técnico en toda España y Andorra

ITALIA

Nilfisk-Advance Italia Spa
 Località Novella Terza
 26862 Guardamiglio (LO)
 Italy
 ☎ +39 0377 414021 – Fax +39 0377 414097
www.nilfisk-advance.com

PORTUGAL

Nilfisk-Advance Lda.
 Rua Cândido de Figueiredo, 91-i, 1500-133 LISBOA
 ☎ 01/7784142 – Fax 01/7785613
 Porto 02/526766 – Fax 02/520739
 Açores 096/628092/3 – Fax 096/628129
 Madeira 091/228965 – Fax 091/228796

GREECE

Embiom S.A.
 Λεωφ. Βουλιαγμένης 60
 Αργυρούπολη
 164 52 Αθήνα
 ☎ 9950613 - Fax 9951680



**Nilfisk
 Advance**

setting standards

www.nilfisk-advance.com

