



## Electronic Service Manuals

This electronic document is provided as a service to our customers. We do not create the contents of the information contained in this document. Should you have detailed questions pertaining to the information contained in this document, you may contact Michco, or the manufacturer which provided the original information in this electronic deliverable. Michco's only part in this electronic deliverable was the electronic assembly process. By providing this manual on line we are not guaranteeing parts availability.

You may contact Michco through the following methods:

Phone (517) 484-9312 or (800) 331-3339

2011 N. High St. -- Lansing, Michigan -- 48906

Fax: (517) 484-9836

Email: [CustServe@Michco.com](mailto:CustServe@Michco.com)

Web site: [www.Michco.Com](http://www.Michco.Com)

Parts Web site: [www.FloorMachineParts.Com](http://www.FloorMachineParts.Com)

Order Parts on Line at:

**[www.FloorMachineParts.Com](http://www.FloorMachineParts.Com)**

Directly to Parts & Service:

By Email: **[Shop@Michco.com](mailto:Shop@Michco.com)**

By Fax: (517) 702-2041

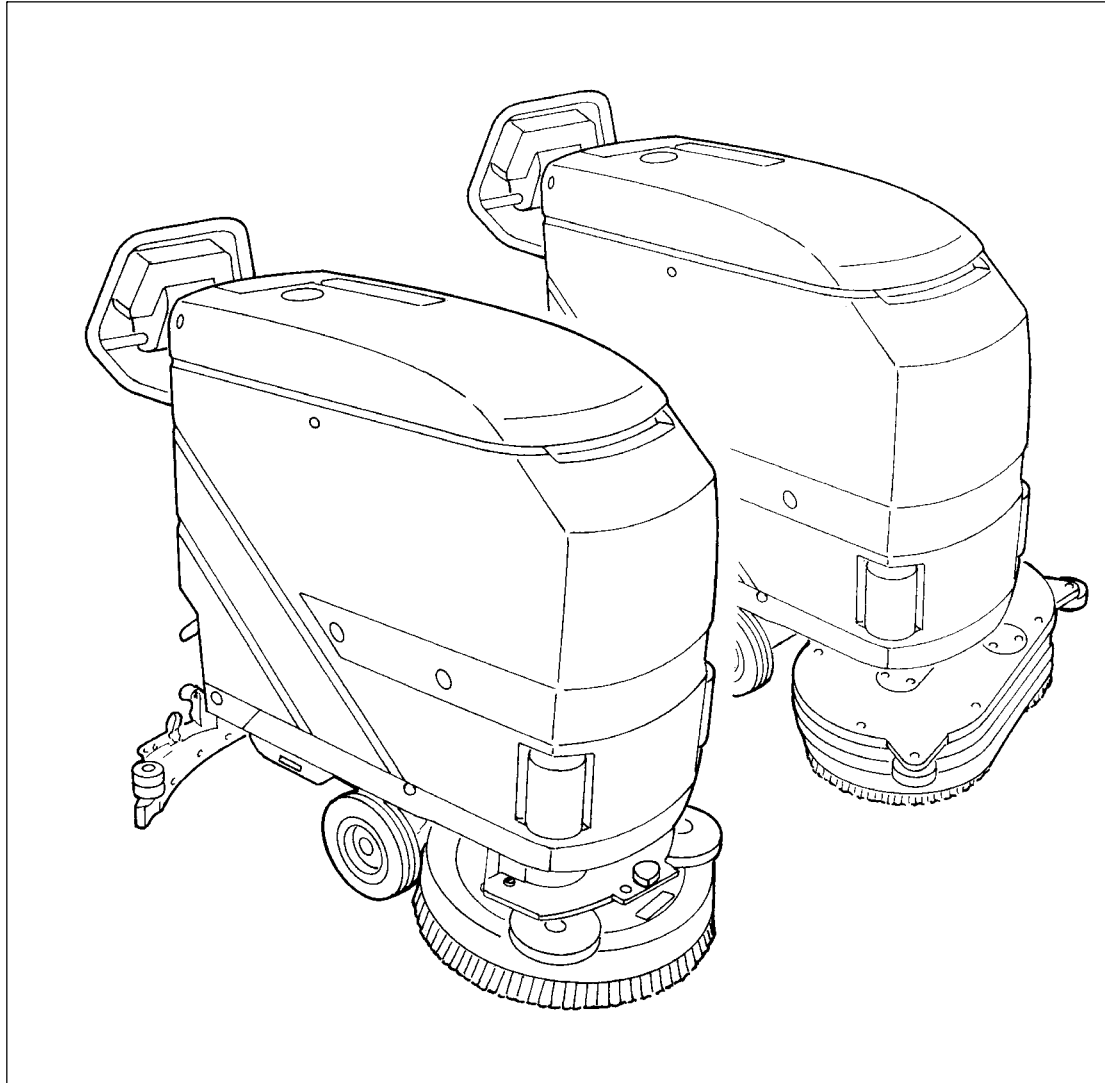
By Voice: Use numbers above.

**Serving the Cleaning Industry Since 1922**

Notice: All copyrighted material remains property of original owners, all trademarks are property of respective owners. Manuals are subject to Manufacturer's reproduction limitations. Originals or reproductions were provided by manufacturers through a request. We make no warranty as to the correctness of information provided in this document and you assume all risk. By placing these manuals on line we are not declaring our corporation to be an manufacturer authorized dealer or provider, please check our web site for authorized manufacturers we represent.

# BA 5321/D - BA 6124D

---



## PARTS LIST

Advance Models:

**L08838130 - L08838135** from serial number 1650149

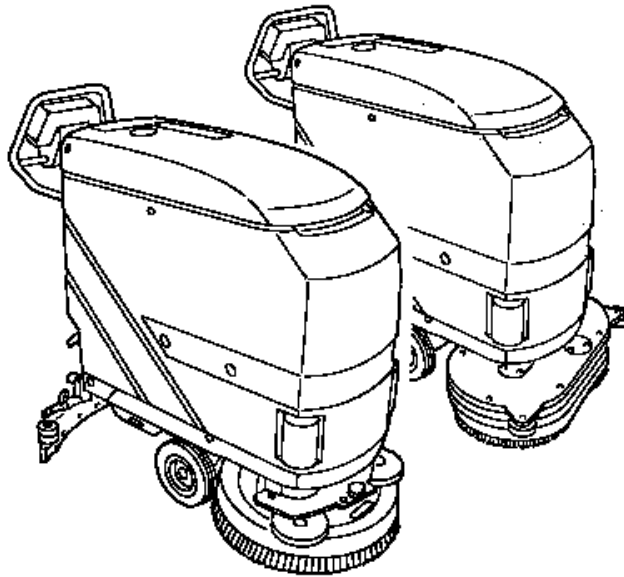
**908 7014 020**



**Advance**  
by Nilfisk-Advance

L08812649(6)2006-1





<b>DESCRIPTION</b>	<b>PLAN</b>
Tank Assembly	2 - 3
Tank Assembly	4 - 5
Chassis System	6 - 7
Pedal Lifting	8 - 9
Brush Drive System BA 5321-BA5321D	10 - 11
Brush Drive System BA 6124D	12 - 13
Squeegee System BA 5321-BA 5321D	14 - 15
Squeegee System BA 6124D	16 - 17
Switch housing BA 5321D-BA 6124D	18 - 19
Switch housing BA 5321	20 - 21
Control panel Assembly	22 - 23
Solution System	24 - 25
Wiring System BA 5321 with battery charger	26 - 27
Wiring System BA 5321D with battery charger	28 - 29
Wiring System BA 6124D with battery charger	30 - 31
Pad holder Assemblies	32 - 33
Wiring diagram BA 5321-BA 5321D - BA 6124D	34 - 36
Wiring diagram BA 5321-BA 5321D - BA 6124D	37 - 39
Recommended spare parts	40

#### WHEN ORDERING PARTS

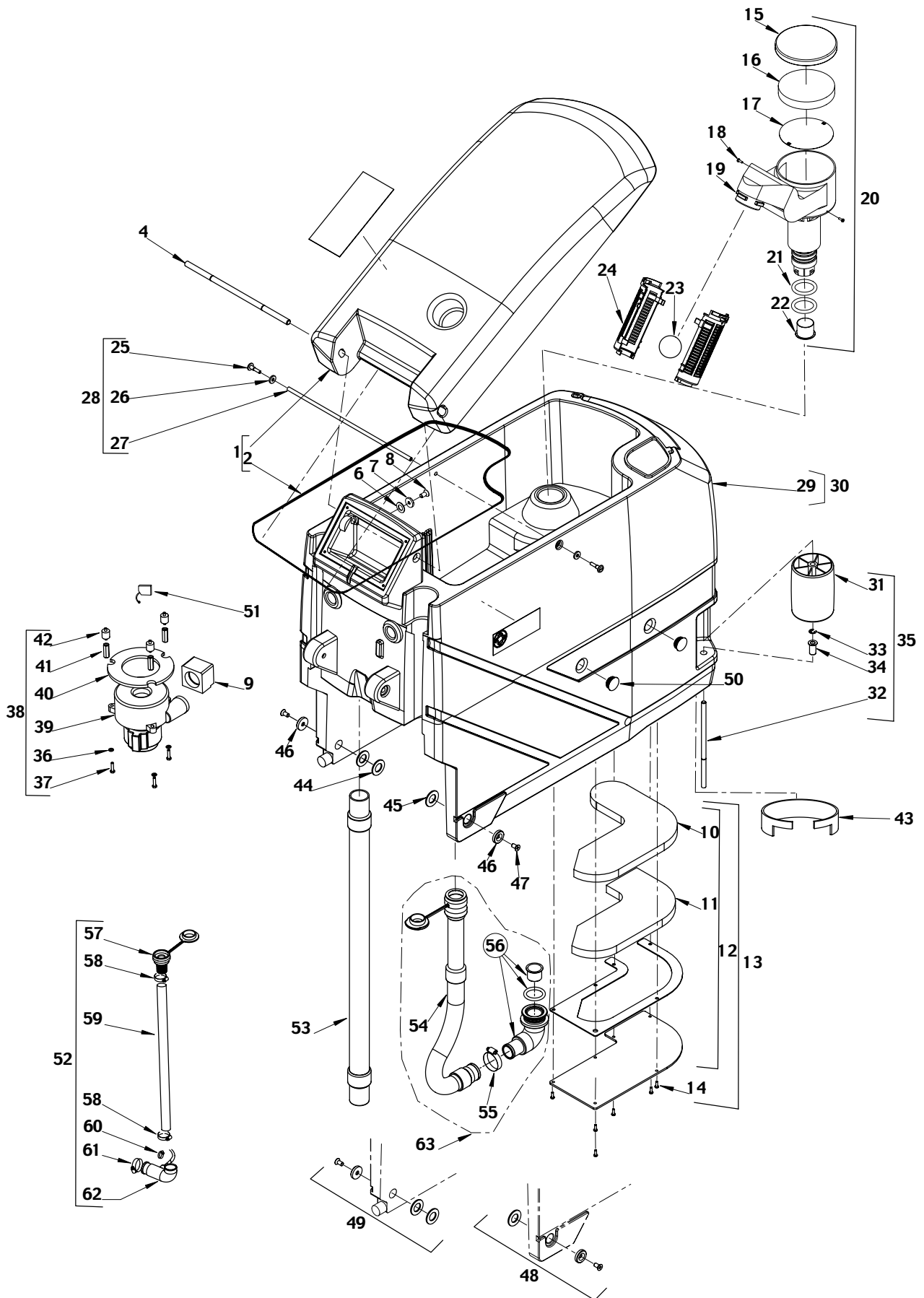
- \* Use the 8,9 or 10 digit part numbers from the "Ref. No." columns in this parts list.
  - \* Specify the model and serial number of the machine.
  - \* Use the space below to record the model and the serial number for future reference.
- Model \_\_\_\_\_ Serial No. \_\_\_\_\_

**\*\* = Optional**

**# = New Item no.**

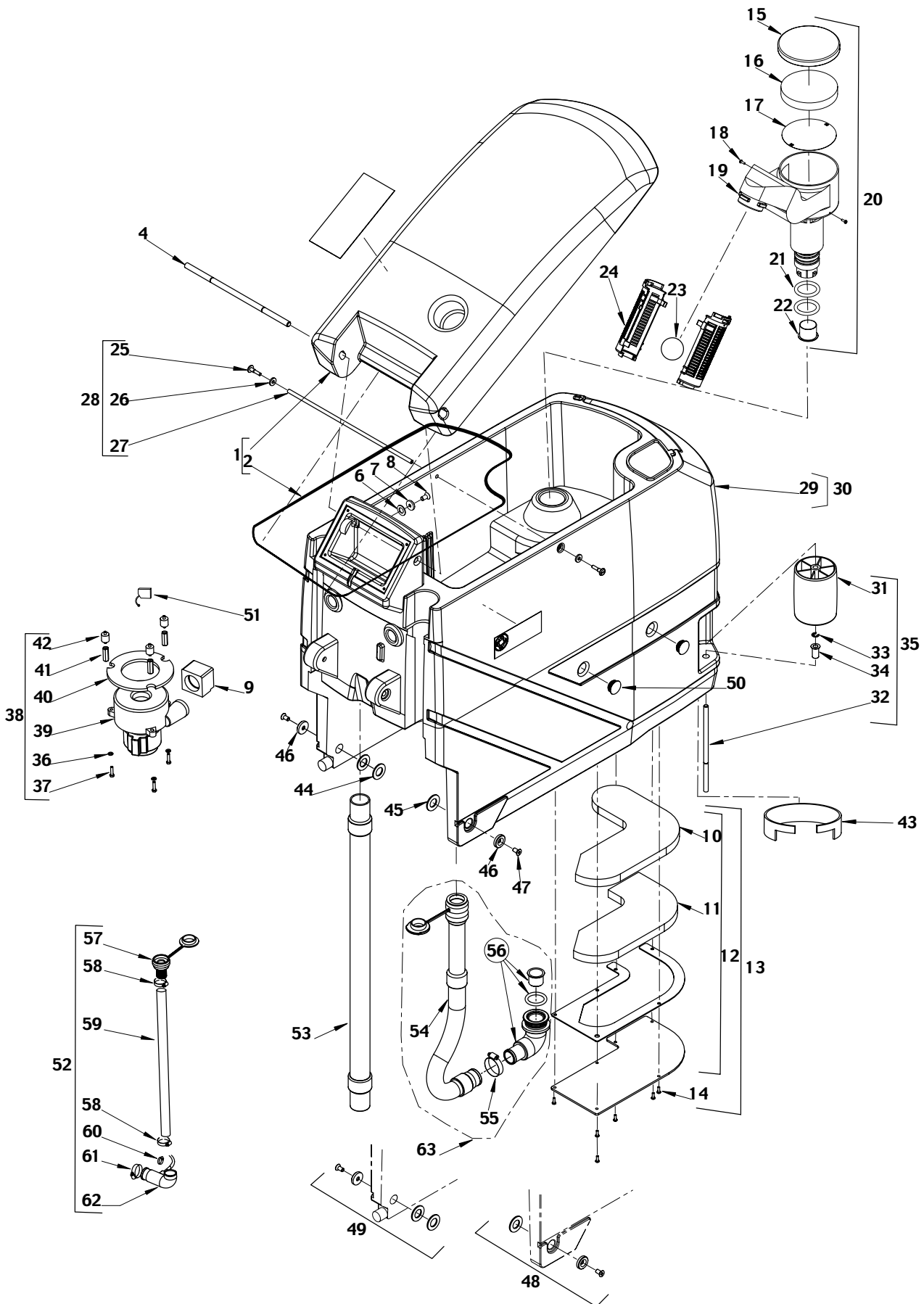
**[ ] = Not shown**

**xxxxxxx = Included in a Kit**



2003-02	TANK ASSEMBLY		
	BA 5321 - BA 5321D - BA 6124D		3

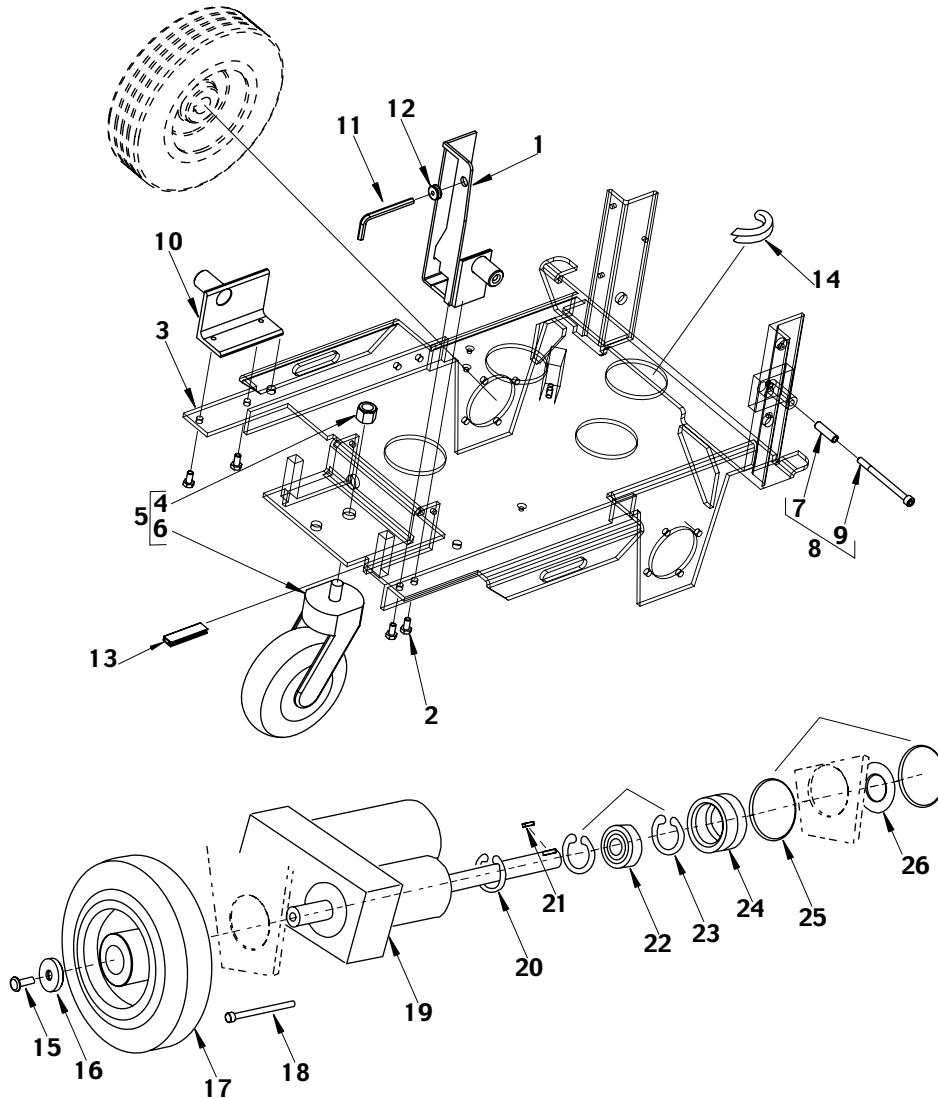
Item no.	Ref. No.	Qty	Description
1#	L08812712	1	Tank lid with seal
2	56325511	1	Seal
4#	L08812254	1	Axle, tank lid
6	56325516	2	Gasket
7	56325517	2	Washer flat 10x30 SS
8	56325519	2	Screw hex hd
9	56325520	1	Sleeve
10	56325523	1	Foam acoustic upper
11#	L08812443	1	Insulating panel
12#	L08603650	1	Cover w/seal complete
13	56325526	1	Acoustic cover/ seal and screw complete
14#	L08812804	6	Screw cyl 4x12 thd form
15	56325532	1	Cover pre-filter+screw
16	56325529	1	Filter
17#	L08602017	1	Grate
18#	L08603123	2	Screw cyl hd thd form 3,5x11 SS
19#	L08812256	1	Filter housing
20	56325534	1	Pre-filter complete
21	56325535	2	O-ring
22	56325536	1	Sleeve
23	56391690	1	Floating ball
24	56324497	2	Float cage complete
25#	L08812687	2	Fitting screw M6x16 nylon
26#	L08812686	2	Rubber bushing 7x18x3
27#	L08812688	1	Tank adjuster pin
28	56325539	1	Rod with fastening assy
29#	L08812711	1	Tank
30#	L08812875	1	Tank complete TSB 2001-015
31	56325542	2	Bumper roller
32	56325543	2	Axle for bumper roller
33	56325544	2	Retaining ring
34	56325545	2	Bushing
35	56325546	2	Bumper roller assy
36#	L08602395	3	Washer flat M6x12,5
37#	L08603680	3	Screw hex hd
38	56325549	1	Turbine 24V complete
39#	L08603888	1	Vacuum motor 24V w/connector
40	56325551	1	Seal
41	56325552	3	Distance bolt
42	56325553	3	Rubber buffer
43	909 5042 000	1	Acoustic insulation interchangeable with the previous one
44	56325554	2	Washer plastic
45	56325555	1	Washer
46	56325580	2	Bushing
47	56325579	2	Screw 8x20
48	56325558	1	Tank reinforce right assy
49	56325559	1	Tank reinforce left assy
50#	L08812457	4	Tank locking cap
51#	L08812887	2	Carbon brush
52#	L08603903	1	Kit clean water hose
53#	L08603883	1	Suction hose
54#	L08812869	1	Drain hose
55	145 0543 000	1	Clamp
56#	L08812874	1	Elbow assy.



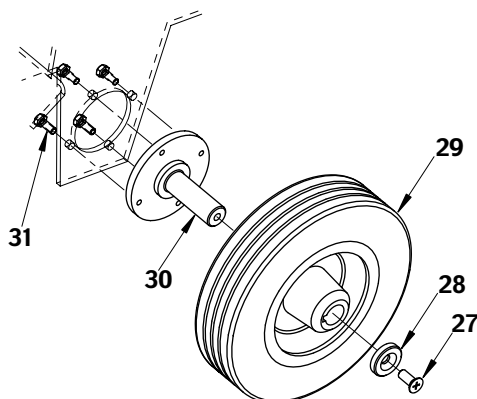
2003-02	TANK ASSEMBLY			
	BA 5321 - BA 5321D - BA 6124D			5

Item no.	Ref. No.	Qty	Description
57#	L08603868	1	Closure clean water hose
58#	L08603916	2	Clamp
59#	L08603869	1	Hose clean water
60#	L08603901	1	Clamp
61	56325632	1	Clamp
62#	L08603870	1	Elbow
63#	L08812873	1	Drain hose kit

BA 5321D - BA 6124D

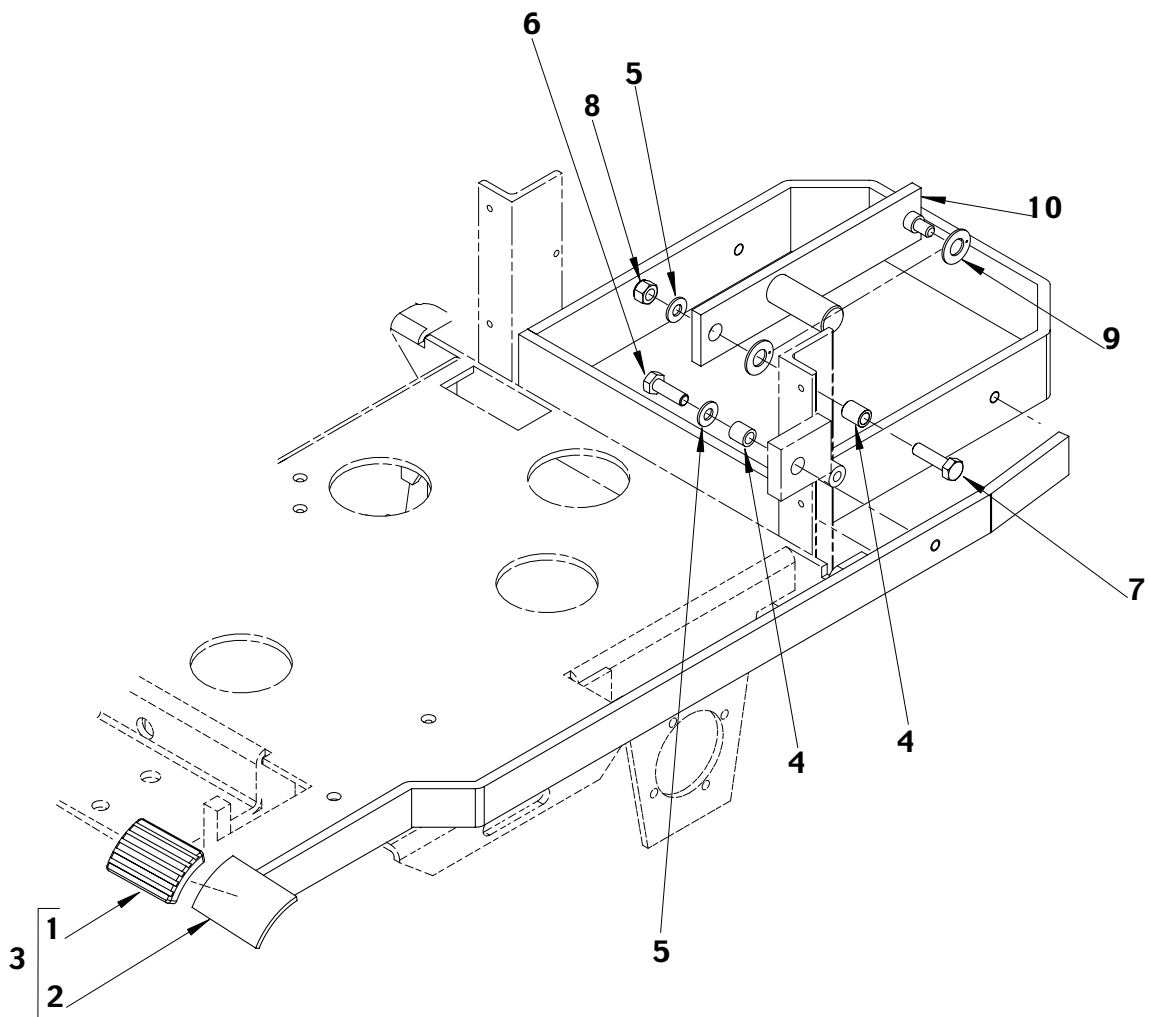


BA 5321



2003-02	CHASSIS SYSTEM			
	BA 5321 - BA 5321D - BA 6124D			7

Item no.	Ref. No.	Qty	Description
1	56325560	1	Tank axle right
2	56325561	4	Screw Hex Hd M6x12
3	56325562	1	Chassis
4	56325563	1	Nut Hex. Nyl. Loc. M12
5	56325564	1	Caster assy
6#	L08812954	1	Caster
7#	L08603681	1	Screw socket Hd. M6x80 SS
8	56325565	1	Tank safety screw assy
9#	L08812449	1	Spacer
10	56325566	1	Tank axle left
11	56325785	1	Allen Wrench M5
12	56325786	1	Grommet
13#	L08812634	1	Reinforced seal
14#	L08812661	1	Seal
ONLY BA 5321D - BA 6124D			
15	56325567	2	Screw Hex. Hd. M10x25
16	56325568	2	Washer flat 10x30
17	909 5078 000	2	Drive wheel
18	56325561	4	Screw Hd. M6x12
19	56325571	1	Drive motor
20#	L08182700	2	Retaining ring
21	56325572	2	Feather key 6x6x35
22	56325573	1	Ball bearing
23	56325574	2	Lock washer
24	56325576	1	Bearing support
25	56325577	2	Lock washer
26	56325578	1	Washer
ONLY BA 5321			
27	56325579	2	Screw M8x20
28	56325580	2	Bushing
29#	L08603696	2	Wheel w/Hub
30	56325582	2	Wheel stud
31	56325570	4	Screw Hex. Hd. M6x16



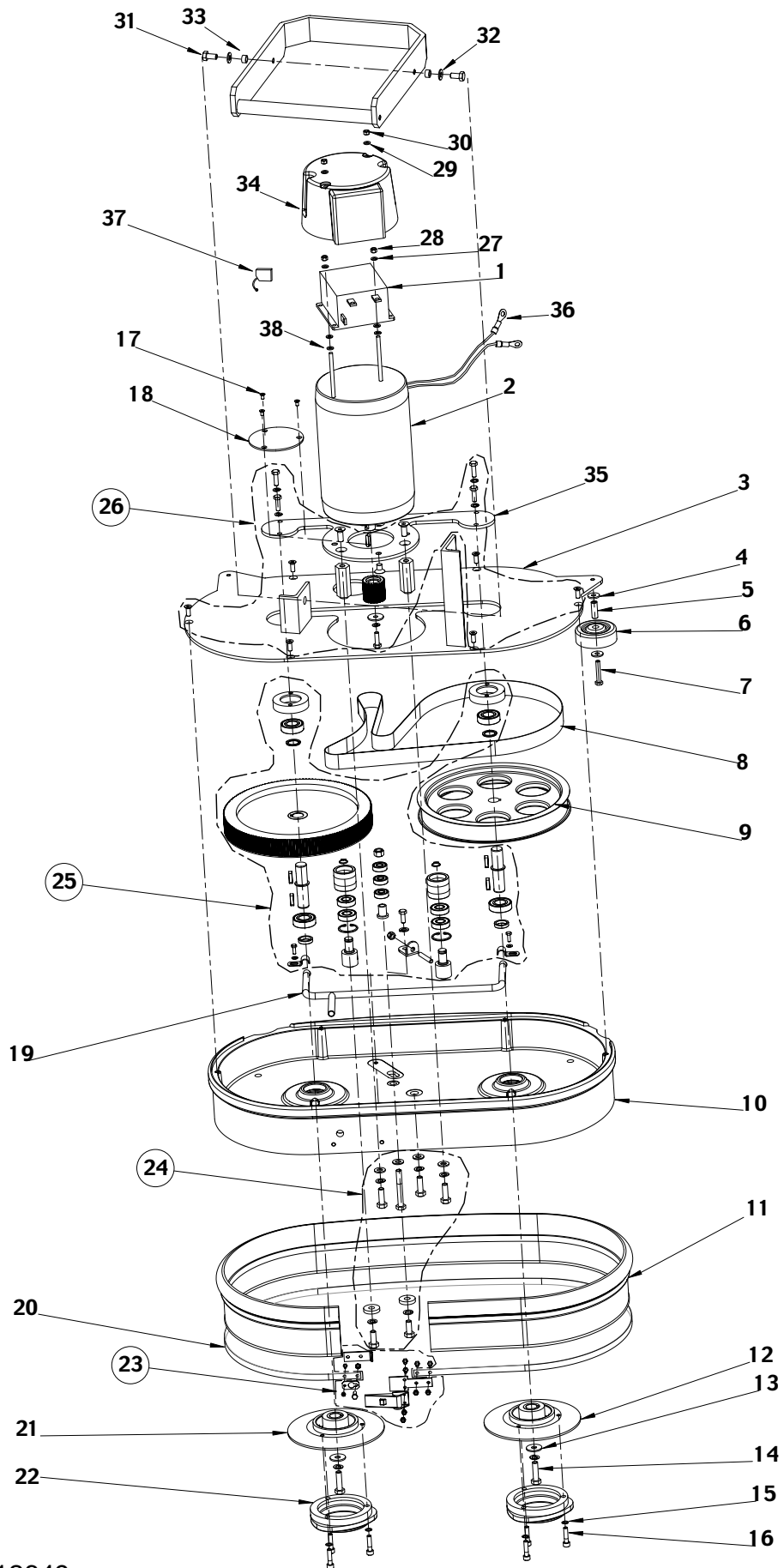
2003-02	PEDAL LIFTING		
	BA 5321 - BA 5321D - BA 6124D		9

Item no.	Ref. No.	Qty	Description
1	56325584	1	Rubber pedal
2#	L08812223	1	Pedal weldment
3	56325585	1	Pedal complete
4	56325586	2	Sleeve
5	56325587	6	Washer
6	56325625	1	Screw Hex. Hd. M8x25
7	56325588	1	Screw Hex. Hd. M8x30
8	56003389	2	Nut Hex. M8
9	56325591	2	Washer
10	56325592	1	Lever



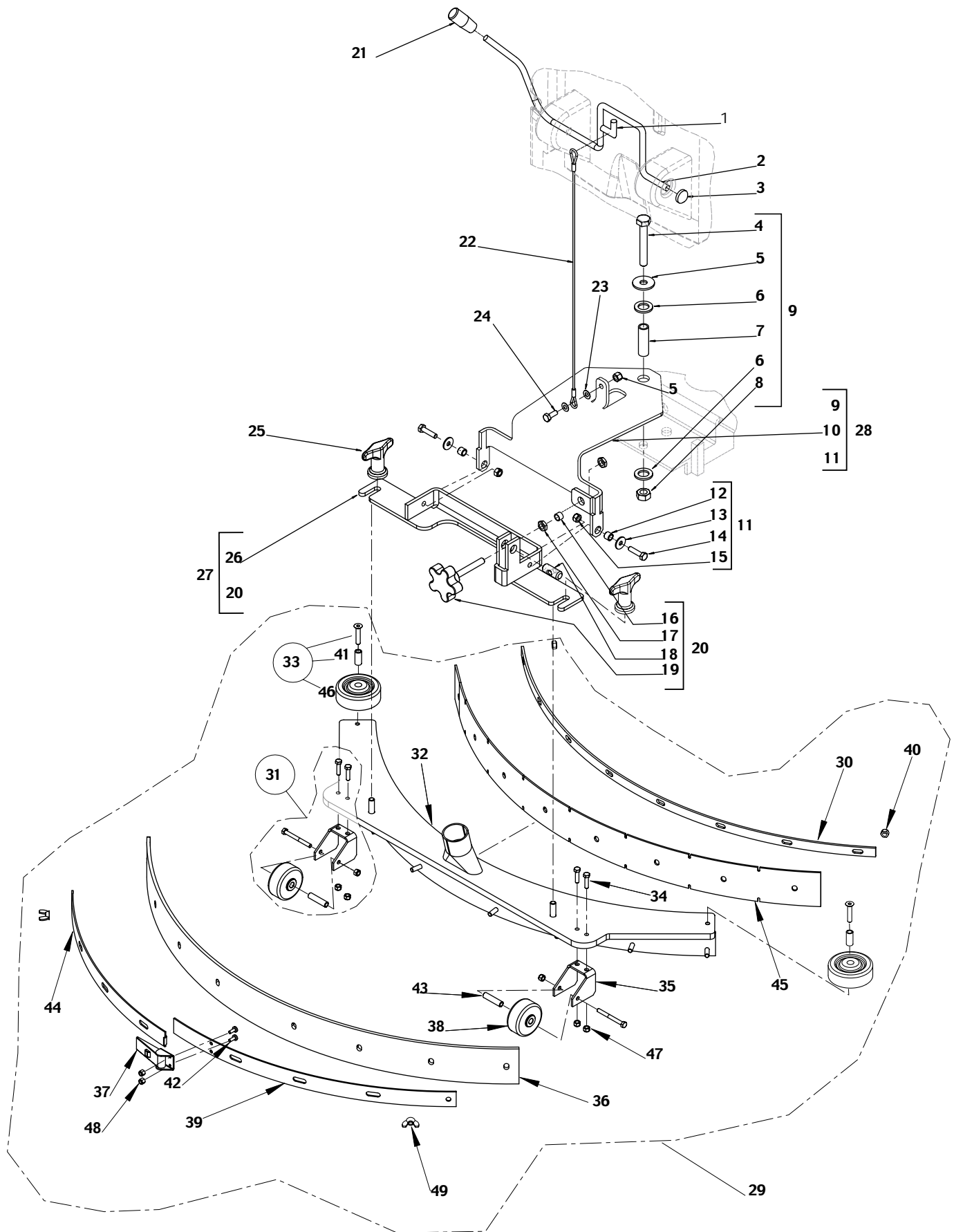
2003-02	BRUSH DRIVE SYSTEM BA 5321 - BA 5321D		
	BA 5321 - BA 5321D - BA 6124D		11

Item no.	Ref. No.	Qty	Description
1#	L08603848	1	Brush motor
2	145 9774 000	1	Feather key
3#	L08812919	1	Brush motor+ Gear case complete TSB 2003-03
4#	L08603849	1	Gear case
5#	56325570	4	Screw Hex. Hd. M6x16
6	56325598	4	Sleeve
7	56325587	4	Washer
8	56325600	5	Screw Hex. Hd. M8x16
9	56325601	1	Nut Hex. M8
10	56325602	1	Buffer
11#	L08812719	1	Washer flat 9x28
12	56325604	1	Base plate
13	56325605	1	Brush cover
14	56325538	7	Washer flat 6x18
15	56325561	7	Screw Hex. Hd. M6x12
16	56325608	1	Polygonal Holder
17	145 9171 000	1	Washer flat 8x32
18	56325588	1	Screw Hex. Hd. M8x30
19	56325611	1	Polygon Holder
20	56325612	3	Washer M6
21	909 5056 000	3	Screw Soc. Hd. self lock. M6x20 SS
22	56325614	2	Plug
23	56003364	2	Nut Hex. M5
24	56325616	2	Knob
25	56003366	2	Washer flat 5x10
26#	L08812718	2	Rubber gasket
27#	L08812706	2	Dowel brush plate fixing
28	56325619	1	Frame
29	56325620	1	Plate
30	56325621	2	Screw Hex. Hd. M6x25
31	56325622	2	Buffer
32#	L08812779	1	Vibration damping plate
33#	L08812780	1	Brush fixing plate assy.
34	56325623	2	Screw counterunk Hd.8x12
35#	L08812999	2	Plug
36	56325625	2	Screw Hex. Hd. M8x25 SS
37	56325609	2	Washer flat 8x24
38	56325626	2	Spring washer
39	56325627	2	Sleeve
40	56325628	2	Bumper rollers
41	56325629	1	Fitting strip
42#	L08812589	1	Polygonal Holder Assembly
43#	L08603850	1	Carbon brushes kit
44	56325732	1	Luster terminal



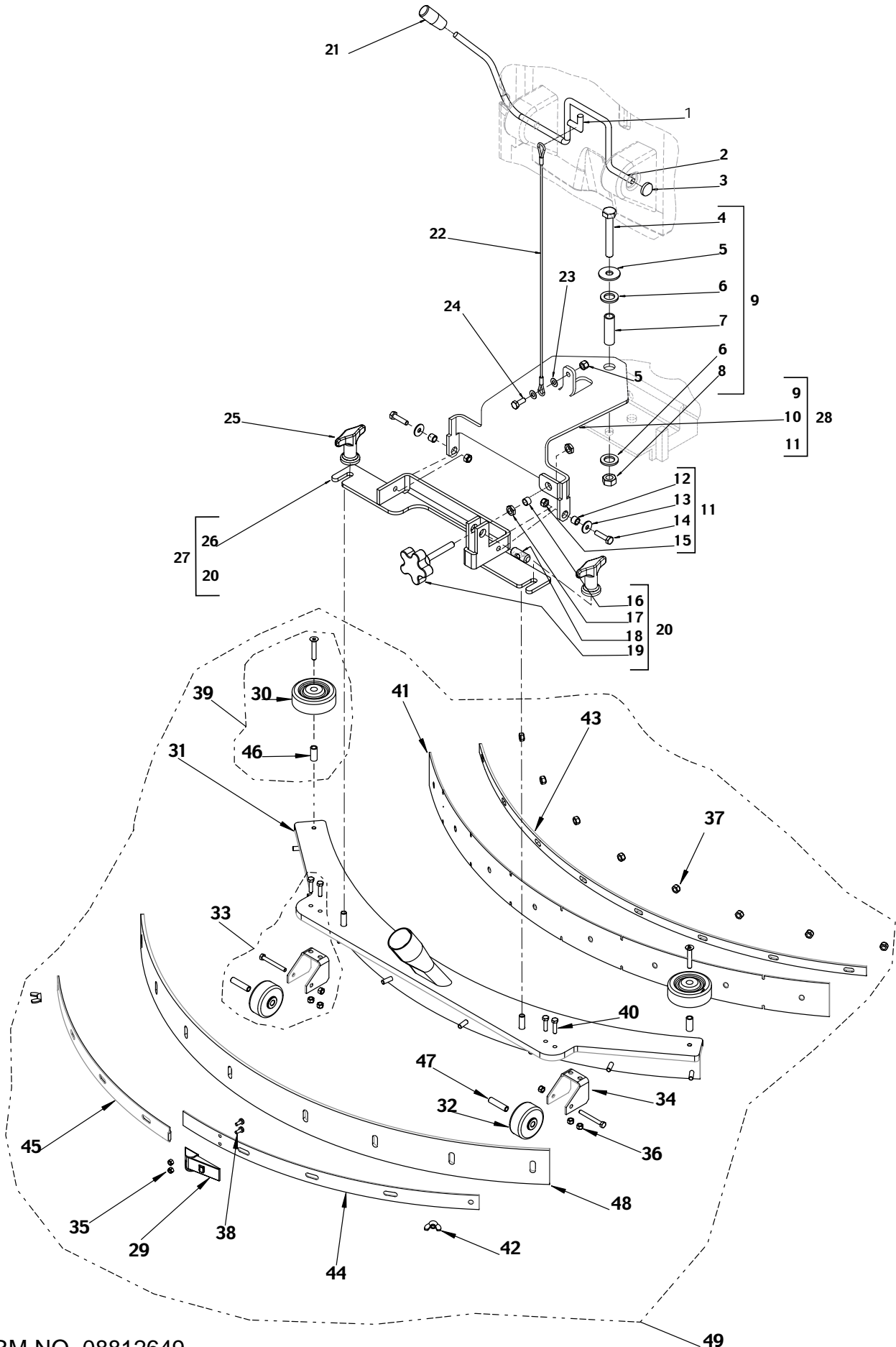
2003-02	BRUSH DRIVE SYSTEM BA 6124D		
	BA 5321 - BA 5321D - BA 6124D		13

Item no.	Ref. No.	Qty	Description
1	909 5016 000	1	Electronic card
2#	L08603820	1	Brush motor 24V
3#	L08603810	1	Cover
4	145 9229 000	4	Washer flat 6,6x18
5#	L08602461	2	Bushing
6	56363855	2	Bumper roller
7	145 9232 000	2	Screw hex hd M6x25
8#	L08603821	1	Belt
9#	L08603811	1	Pulley
10#	L08603809	1	Brush deck 24"
11#	L08603837	1	Splash guard
12	56325608	1	Hub right
13	56325609	1	Washer flat
14	145 9281 000	2	Screw hex hd M8x30
15	56325612	6	Washer M6
16	909 5056 000	6	Screw self lock M6x20
17#	L08603976	3	Screw M4x8 SS
18#	L08603904	1	Closure
19#	L08603815	1	Copper hose
20#	L08603826	1	Splash guard holder
21#	L08603822	1	Hub left
22	56325611	2	Hub
23#	L08603979	1	Kit splash guard fixing
24#	L08603980	1	Kit Hardware Brush Deck
25#	L08603981	1	Kit Pulleys Fixing
26#	L08603982	1	Kit hardware brush motor
27	145 9154 000	2	Washer
28	145 9134 000	2	Nut hex M5
29	145 9133 000	2	Washer flat
30#	L08603704	2	Nut hex self lock M5
31	56325600	2	Screw hex M8x16
32	56325587	2	Washer flat
33	56325598	2	Bushing
34	909 5020 000	1	Cover Electronic Card
35#	L08603823	1	Flange motor
36	146 0725 000	2	Terminal
37#	L08603949	1	Carbon Brushes Kit
38	56003366	4	Washer flat 5x10



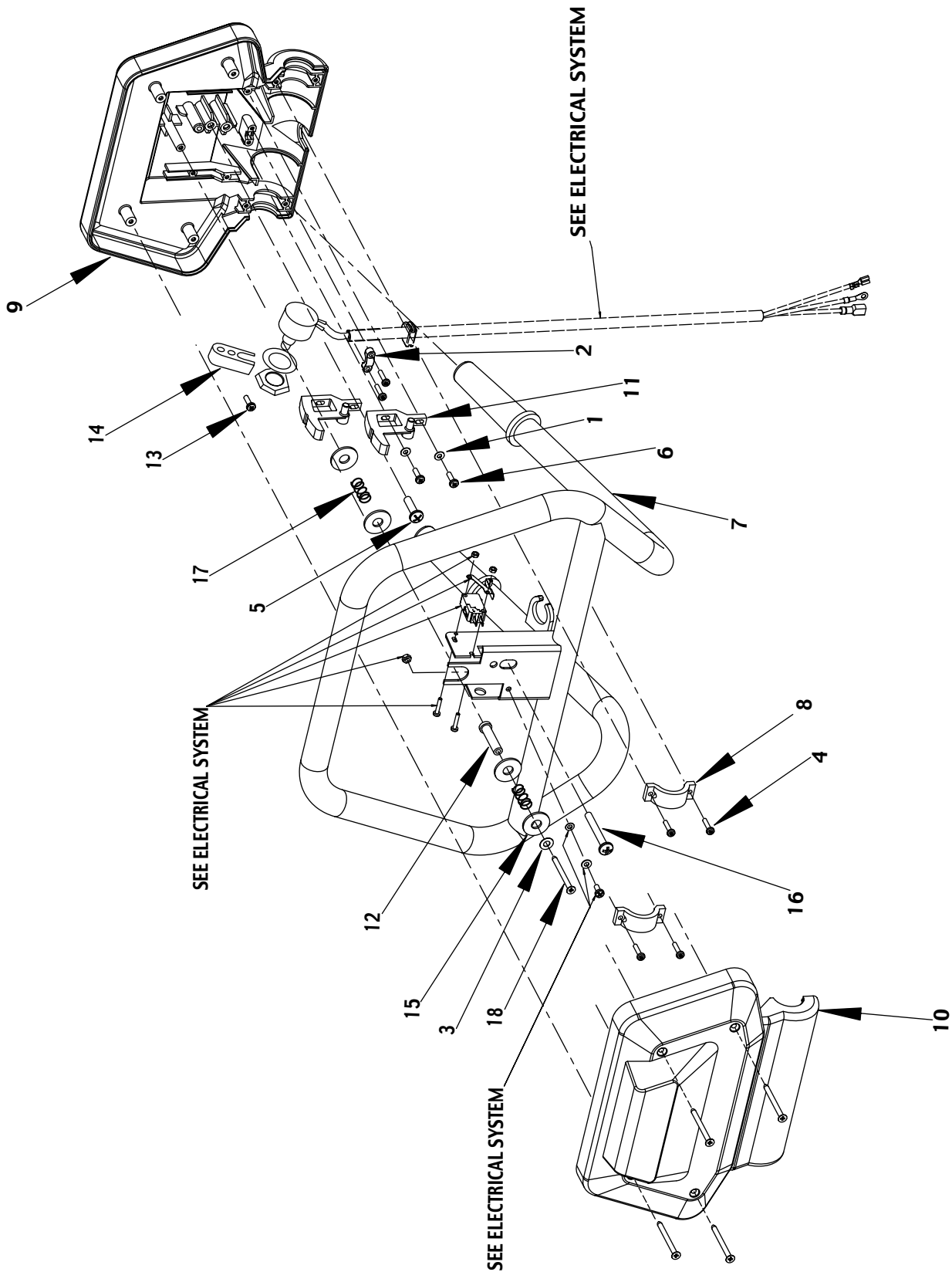
2003-02	SQUEEGEE SYSTEM BA 5321 - BA 5321D			
	BA 5321 - BA 5321D - BA 6124D			15

Item no.	Ref. No.	Qty	Description
1#	L08603935	1	Plug
2	56325709	1	Squeegee lever
3	56325710	1	Closing cap
4#	L08602211	1	Screw
5	56325568	1	Washer
6#	L08238300	2	Washer
7#	L08812391	1	Spacer
8#	L08082100	1	Nut
9	56325681	1	Fixture kit
10#	L08603655	1	Squeegee support plate
11	56325682	1	Fixture for nozzle holder left / right
12#	L08601854	2	Spacer
13	56325538	2	Washer
14	56325621	2	Screw
15#	L08361400	2	Nut
16#	L08602422	1	Spacer
17#	L08600317	2	Nut
18#	L08601509	1	Pin
19#	L08601574	1	Knob
20	56325684	1	Adjustment screw kit
21	56325708	1	Ball grip
22	56325711	1	Squeegee lift cable
23	56325538	2	Washer
24#	L08603680	1	Screw hex hd
25#	L08603675	2	Thumb nut
26#	L08812228	1	Squeegee holder
27	56325683	1	Nozzle holder set
28#	L08603657	1	Linkage arm complete
29#	L08603878	1	Kit squeegee complete
30#	L08603672	1	Blade fixer latch
31#	L08603879	1	Kit squeegee wheel
32#	L08603676	1	Squeegee weldment
33#	L08603880	1	Kit squeegee bumper roller
34#	L08603687	1	Screw
35#	L08603666	2	Support squeegee wheel
36	56325685	1	Squeegee blade rear
37	56471194	1	Latch for squeegee
38#	L08603665	2	Rubber wheel
39	56393290	1	Rear strap for hook
40#	L08603682	8	Nut
41#	L08812937	2	Spacer
42#	L08603684	2	Screw
43#	L08812948	2	Spacer
44	56393289	1	Rear strap for hook
45	56393285	1	Squeegee blade front
46	56363855	2	Bumper roller
47#	L08603688	6	Nut
48#	L08603685	2	Nut
49	145 0461 000	2	Wing nut
[50]#	L08603922	1	Kit bumper roller opt.
[51]#	L08837060	1	Straight squeegee assembly
[52]#	L08837041	1	Oil resistant squeegee blades kit for curved squeegee
[53]#	L08812403	1	Wear pack:squ.blades, sol.filter, pre filter f.straight sq.BA 5321/D
[54]#	L08812404	1	Wear pack:squ.blades, sol.filter, pre filter f.curved sq.BA 5321/D
[55]#	L08812405	1	Wear pack:oil resist. squ.blades, sol.filter, pre filter f. curved sq. BA 5321/D



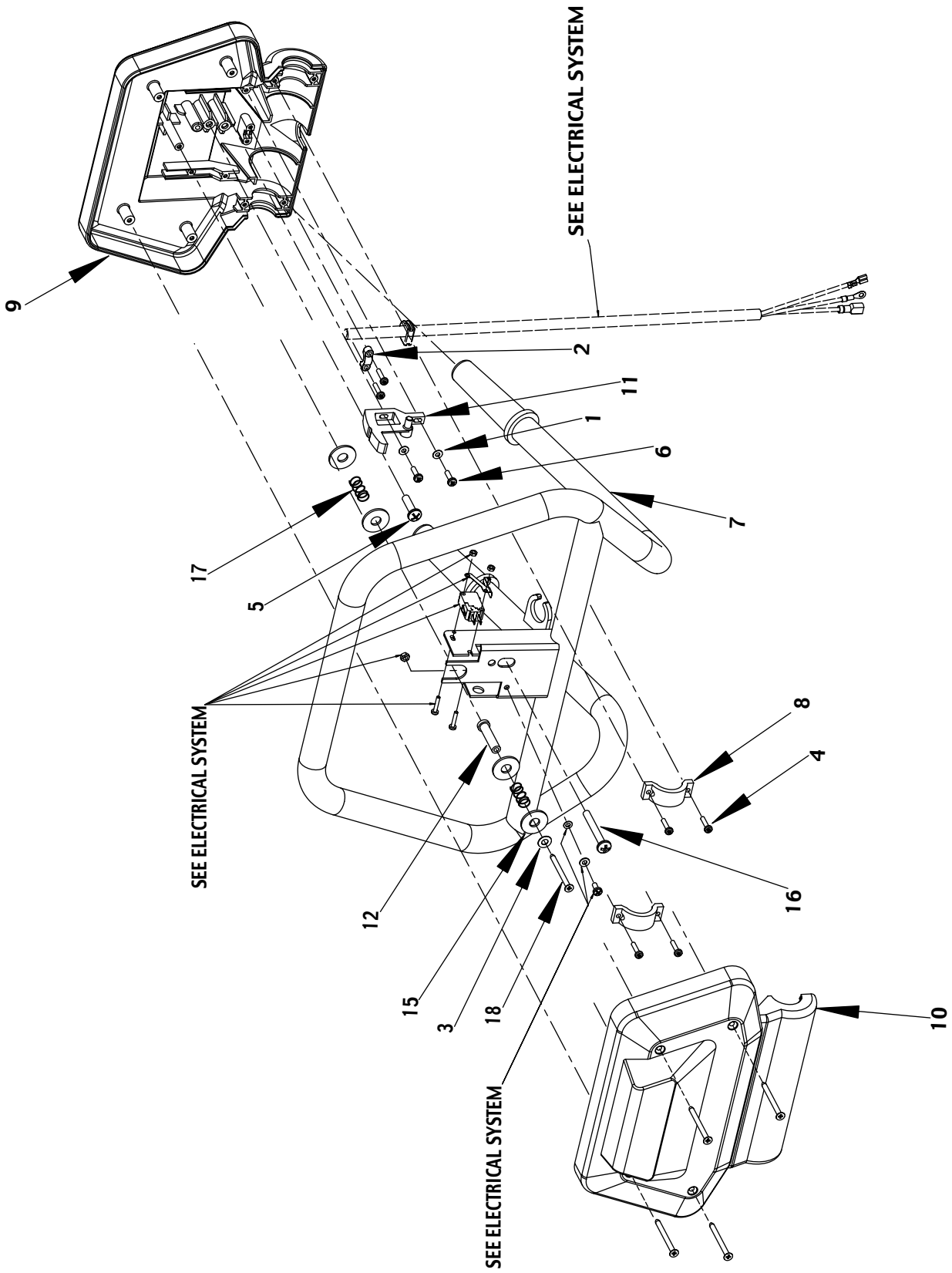
2003-02	SQUEEGEE SYSTEM BA 6124D			
	BA 5321 - BA 5321D - BA 6124D			17

Item no.	Ref. No.	Qty	Description
1#	L08603935	1	Plug
2	56325709	1	Squeegee lever
3	56325710	1	Closing cap
4#	L08602211	1	Screw
5	56325568	1	Washer
6#	L08238300	2	Washer
7#	L08812391	1	Spacer
8#	L08082100	1	Nut
9	56325681	1	Fixture kit
10#	L08603655	1	Squeegee support plate
11	56325682	1	Fixture for nozzle holder left / right
12#	L08601854	2	Spacer
13	56325538	2	Washer
14	56325621	2	Screw
15#	L08361400	2	Nut
16#	L08602422	1	Spacer
17#	L08600317	2	Nut
18#	L08601509	1	Pin
19#	L08601574	1	Knob
20	56325684	1	Adjustment screw kit
21	56325708	1	Ball grip
22	56325711	1	Squeegee lift cable
23	56325538	2	Washer
24#	L08603680	1	Screw hex hd
25#	L08603675	2	Thumb nut
26#	L08812228	1	Squeegee holder
27	56325683	1	Nozzle holder set
28#	L08603657	1	Linkage arm complete
29	56471194	1	Latch for squeegee
30	56363855	2	Bumper roller
31#	L08603828	1	Weldment, squeegee tool
32#	L08603665	2	Squeegee wheel
33#	L08603879	1	Kit squeegee wheel
34#	L08603666	2	Support squeegee wheel
35#	L08603685	2	Nut self loc M4 SS
36#	L08603688	6	Nut self loc M5 SS
37#	L08603682	8	Nut self loc M6 SS
38#	L08603684	2	Screw M4x10
39#	L08603880	1	Kit squeegee bumper roller
40#	L08603687	4	Screw hex hd M5x20 SS
41#	L08603830	1	Squeegee blade front
42	145 0461 000	2	Wing nut
43#	L08603831	1	Strap front
44#	L08603834	1	Right rear strap
45#	L08603833	1	Left rear strap
46#	L08812937	2	Spacer
47#	L08812948	2	Spacer
48#	L08603832	2	Squeegee blade rear
49	909 5005 000	1	Kit squeegee complete
[50]#	L08603973	1	Kit oil resistant blades
[51]	909 5004 000	1	Wear pack - kit oil resistant blades for curved squeegee
[52]	909 5006 000	1	Wear pack - kit squeegee blades for curved squeegee



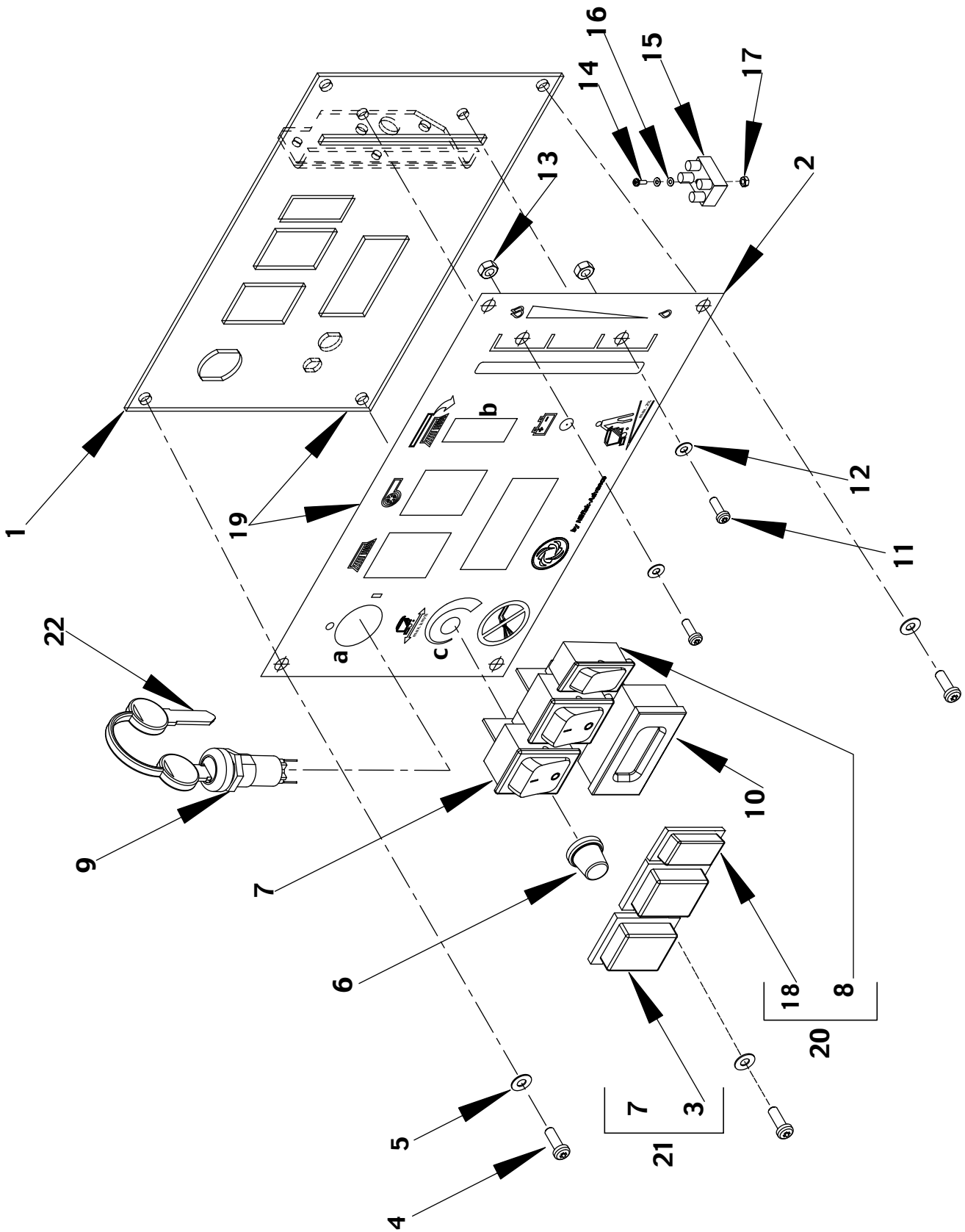
2003-02	SWITCH HOUSING BA 5321D - BA 6124D		
	BA 5321 - BA 5321D - BA 6124D		19

Item no.	Ref. No.	Qty	Description
1#	L08200800	4	Washer flat 4x9x0,8 SS
2	56340083	1	Cables fixing block
3#	L08602395	1	Washer flat 6x12,5
4	56325661	6	Screw thd form M3,5x16
5	56340224	1	Screw cyl hd thd form M6x25 SS
6#	L08603668	4	Screw cyl hd thd form M4x14 SS
7	56325658	1	Handle bar
8	56325662	2	Clamp
9	56325659	1	Switch housing rear
10	56325651	1	Switch housing front
11	56325664	2	Micro switch cam
12	56325655	1	Distance sleeve
13	56325640	1	Screw pan hd phil M4x10
14	56325657	1	Potentiometer fork
15	56325653	4	Washer flat nylon 9x25
16	56325660	1	Screw with dome 6x50 thd form
17	56325654	2	Drive control spring
18	56325650	5	Screw flat hd 4,2x50 thd form



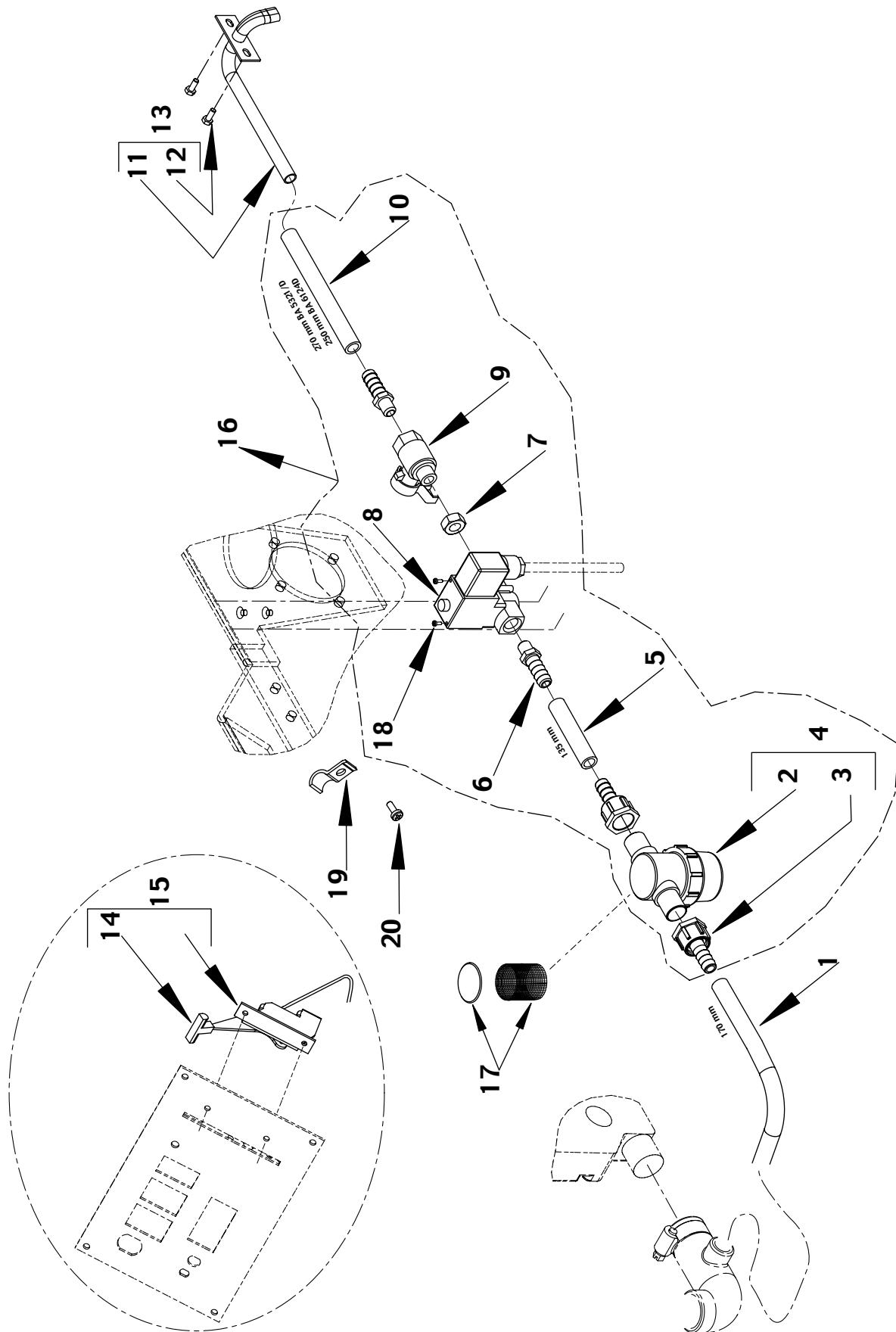
2003-02	SWITCH HOUSING BA 5321		
	BA 5321 - BA 5321D - BA 6124D		21

Item no.	Ref. No.	Qty	Description
1#	L08200800	4	Washer flat 4x9x0,8 SS
2	56340083	1	Cables fixing block
3#	L08602395	1	Washer flat 6x12,5
4	56325661	1	Screw thd form M3,5x16
5	56340224	1	Screw cyl hd thd form M6x25 SS
6#	L08603668	2	Screw cyl hd thd form M4x14 SS
7	56325658	1	Handle bar
8	56325662	2	Clamp
9	56325659	1	Switch housing rear
10	56325651	1	Switch housing front
11	56325664	1	Micro switch cam
12	56325655	1	Distance sleeve
15	56325653	4	Washer flat nylon 9x25
16	56325660	1	Screw with dome 6x50 thd form
17	56325654	2	Drive control spring
18	56325650	5	Screw flat hd 4,2x50 thd form



2003-02	CONTROL PANEL ASSEMBLY		
	BA 5321 - BA 5321D - BA 6124D		23

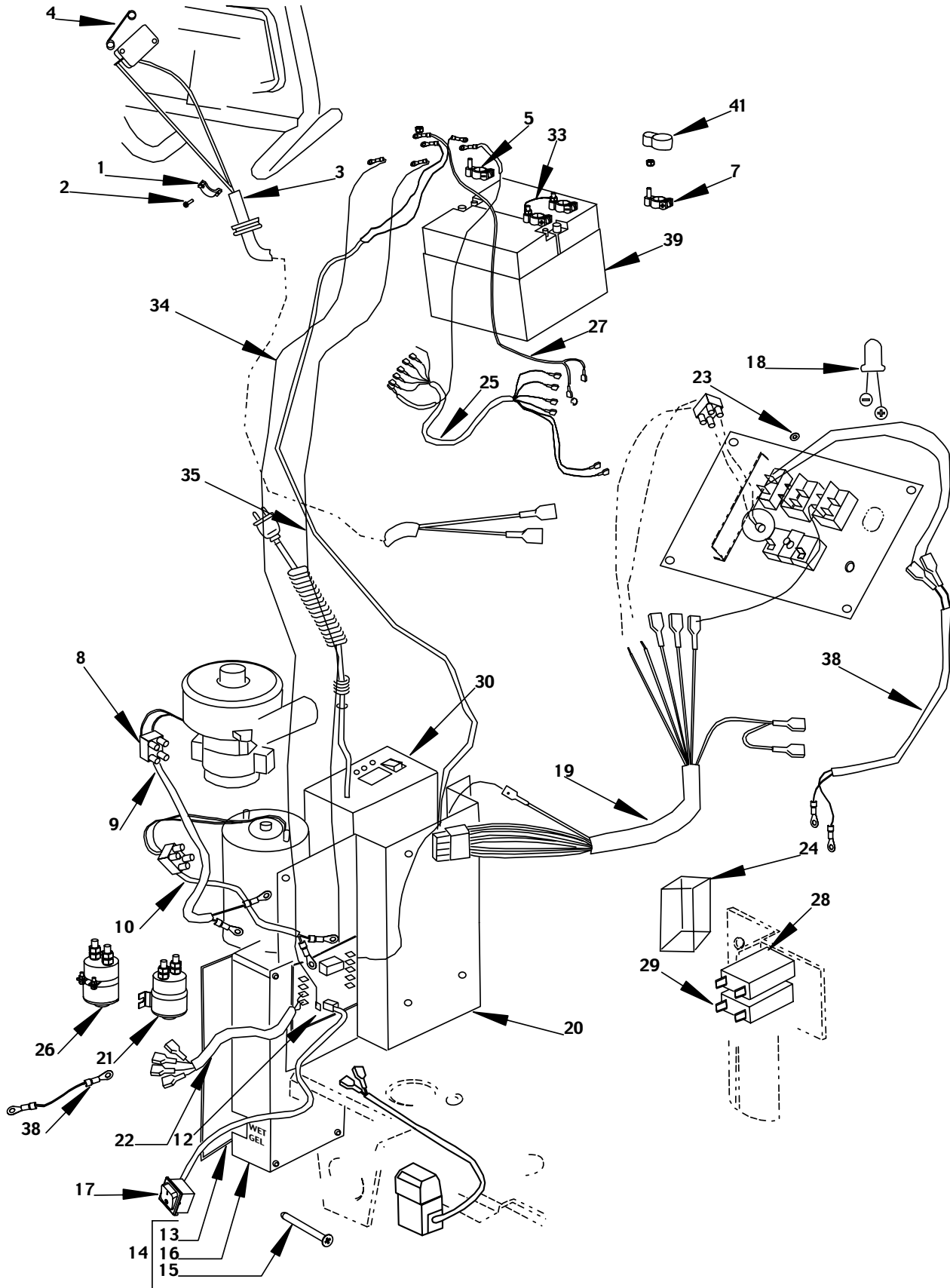
Item no.	Ref. No.	Qty	Description
1#	L08603942	1	Control panel
2#	L08603983	1	Decal BA 5321
2#	L08603943	1	Decal BA 5321D - 6124D
3#	L08603193	2	Plastic bracket w/seal and switch protection cap
4#	L08812804	4	Screw cyl hd 4x12 thd form
5	56325716	4	Washer flat 4x9 SS
6	56325720	1	Knob for potentiometer
7	56340199	2	Switch pump/ vacuum
8#	L08603944	1	Switch click off
9	56325718	1	Key switch complete BA 5321D - BA 6124D
10	56325728	1	Hour meter
11#	L08604077	2	Screw cyl hd M4x10
12	145 9144 000	2	Washer flat 4x9
13	56003351	2	Nut hex M4
14#	L08603705	1	Screw pan hd M3x25
15	56325726	1	Luster terminal
16#	L08102800	2	Washer lock
17#	L08048300	1	Nut hex M3
18#	L08603945	1	Plastic backet w/seal and switch protection
19	56325715	1	Kit control panel with decal BA 5321
19	56325724	1	Kit control panel with decal BA 5321D
19	909 5055 000	1	Kit control panel with decal for click off BA 5321
19	909 5054 000	1	Kit control panel with decal for click off BA 5321D - BA 6124D
20#	L08603950	1	Kit switch click off w/ cap
21	56325719	2	Kit switch w/ cap
22	909 5100 000	1	Keys (2 pcs)



2003-02	SOLUTION SYSTEM		
	BA 5321 - BA 5321D - BA 6124D		25

Item no.	Ref. No.	Qty	Description
1#	L08603914	1	Hose 170 mm
2#	L08603808	1	Filter
3#	L08603662	2	Hose barb.
4#	L08603864	1	Filter w/ hose barb kit
5#	L08603913	1	Hose 135 mm
6	56325648	2	Screwed socket
7	56325646	1	Nut hex
8#	L08812642	1	Solenoid valve 24V
9#	L08812427	1	Valve
10#	L08603915	1	Hose 270 mm
11#	L08812326	1	Copper hose
12	146 0632 000	2	Screw hex M4x8
13	56325641	1	Copper hose complete
14#	L08603790	1	Handle
15#	L08603791	1	Lever w/cable
16	56325649	1	Solenoid valve kit
17#	L08603893	1	Kit net filter int. w/gasket
18	56325645	2	Screw flat hd phil M4x10 SS
19	56325638	1	Clamp
20#	L08600124	1	Screw hex hd M6x8

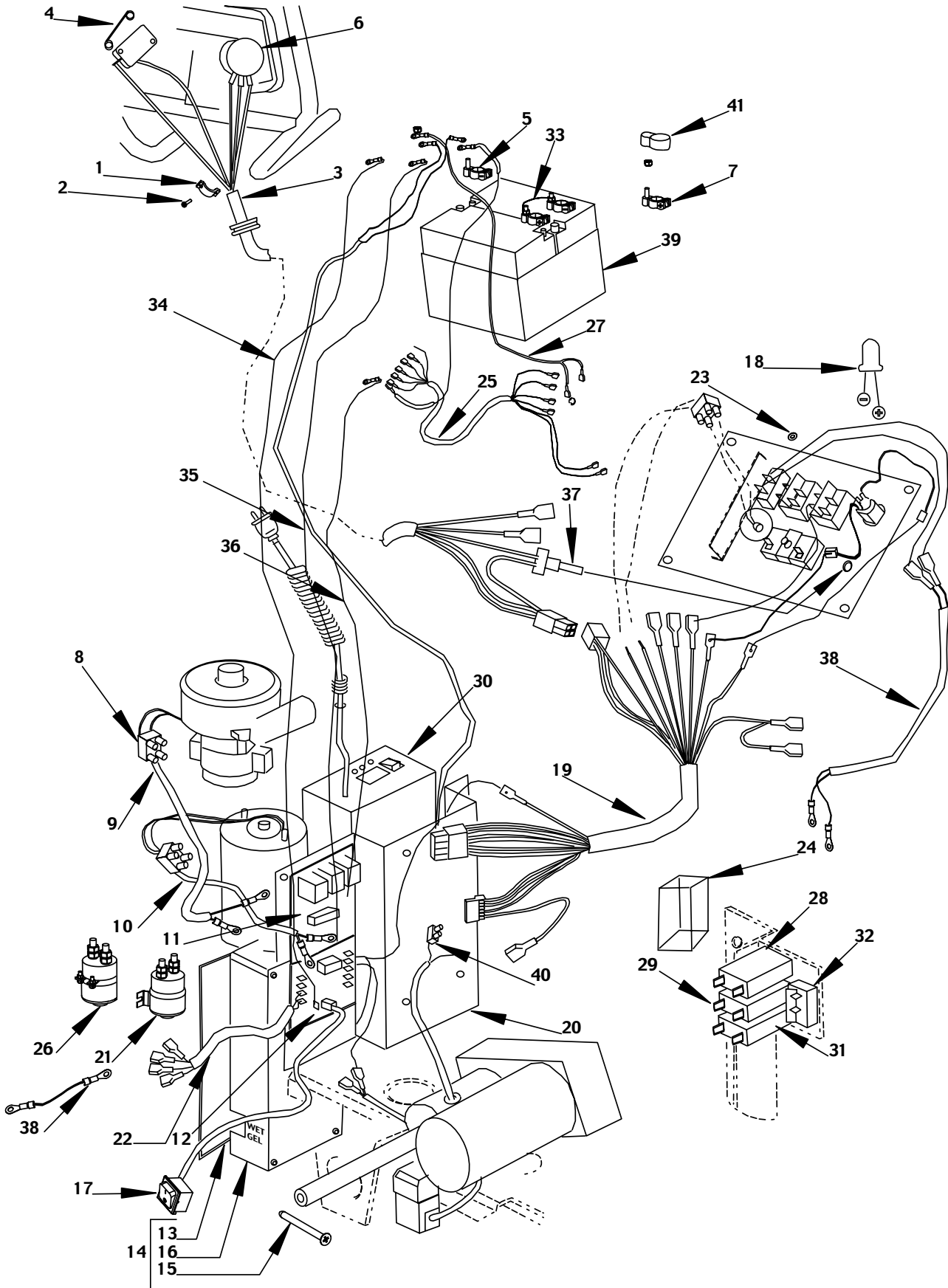
BA 5321



2003-02	Wiring system BA 5321 with battery charger			
	BA 5321 - BA 5321D - BA 6124D			27

Item no.	Ref. No.	Qty	Description
1#	L08600168	1	Cable fixing block
2	56325661	2	Screw cyl hd thd form 3,6x16
3	56325769	1	Harness control panel/ microswitch
4#	L08812377	1	Contact for micro
5#	L08812064	2	Battery clamp -
7#	L08812063	2	Battery clamp +
8	56325734	1	Connection
9	56325736	1	Harness vacuum mot./elect. card
10#	L08603711	1	Harness brush motor/ electronic card
12#	L08812814	1	Electronic card release 3
13#	L08812354	1	Gasket
14	56325740	1	Kit closure electronic card
15	56325723	4	Screw cyl hd 4x70
16#	L08812284	1	Cover electronic card
17	56325725	1	Cable for electronic card cover
18	56325741	1	Led red
19#	L08812603	1	Harness machine
20	56325743	1	Support for electronic card
21	145 0300 000	1	Electromagnetic switch vacuum motor
22#	L08603717	1	Harness coil/electronic card
23#	L08812801	1	Spacer
24	56325761	1	Fuse cover
25#	L08603714	1	Cable fuses/ electronic card
26#	L08603934	1	Electromagnetic switch brushes
27	56325752	1	Harness fuses/batteries
28	56325754	1	Fuse 25A
29#	L08603727	1	Fuse 30A
30#	L08812996	1	Battery charger
33	56325750	1	Lead cable
34	56325747	1	Strand red, battery clamp + / electronic card
35	56325756	1	Strand black, battery clamp -/ electronic card
38#	L08603929	1	Harness click off
39#	L08812758	1	Battery container
41#	L08812093	4	Cap for battery clamp

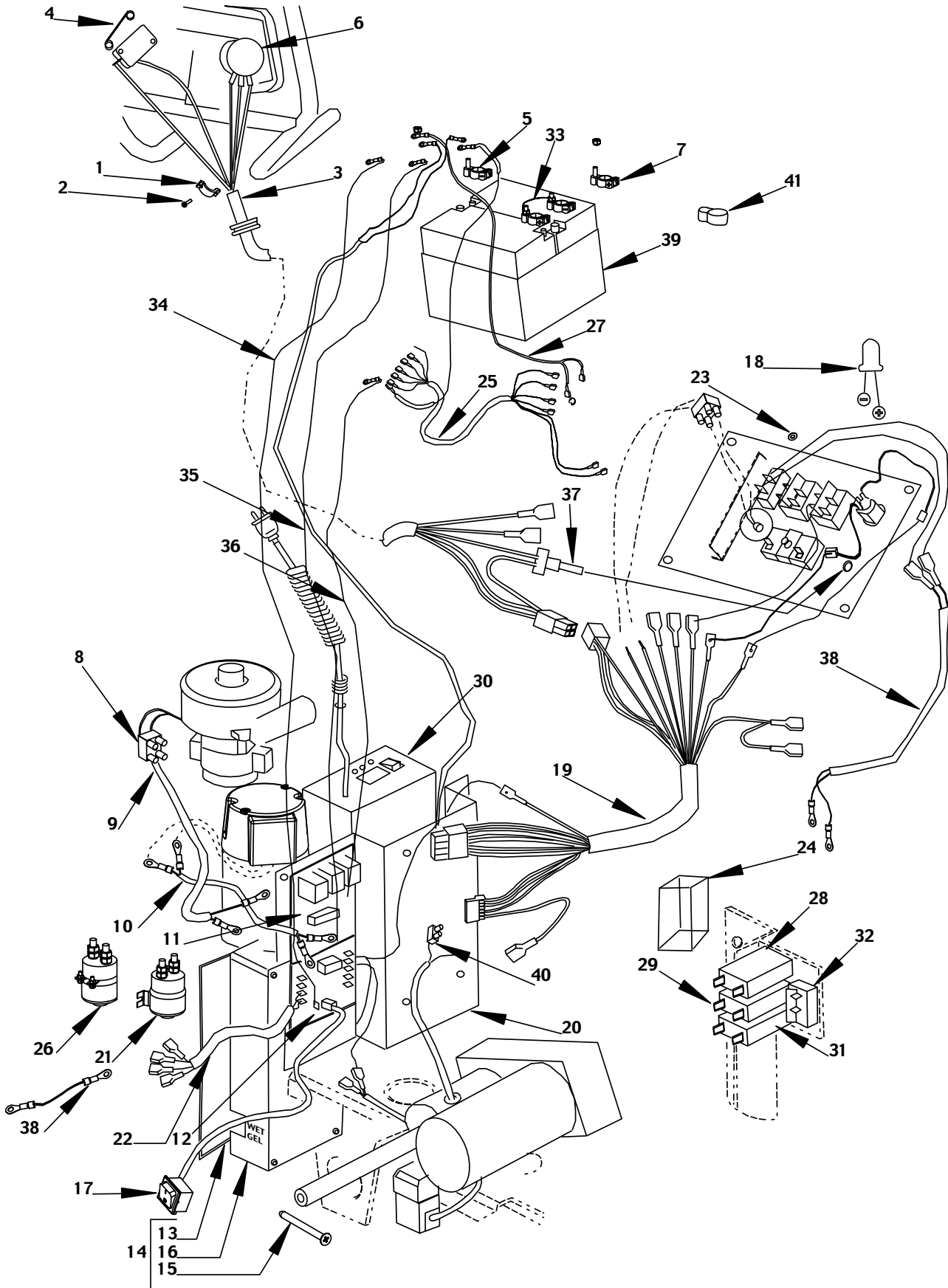
BA 5321 D



2003-02	Wiring system BA 5321D with battery charger			
	BA 5321 - BA 5321D - BA 6124D			29

Item no.	Ref. No.	Qty	Description
1	56340083	1	Cable fixing block
2	56325661	2	Screw cyl hd thd form 3,6x16
3	56325733	1	Harness - traction
4#	L08812377	1	Contact for micro
5#	L08812064	2	Battery clamp -
6#	L08812292	1	Potentiometer traction adjuster
7#	L08812063	2	Battery clamp +
8	56325734	1	Connection
9	56325736	1	Harness vacuum mot./elect. card
10	909 5014 000	1	Harness brush motor
11	56325738	1	Traction card
12#	L08812814	1	Electronic card release 3
13#	L08812354	1	Gasket
14	56325740	1	Kit closure electronic card
15	56325723	4	Screw cyl hd 4x70
16#	L08812284	1	Cover electronic card
17	56325725	1	Cable for electronic card cover
18	56325741	1	Led red
19	56325742	1	Harness machine
20	56325743	1	Support for electronic card
21	145 0300 000	1	Electromagnetic switch vacuum motor
22#	L08603717	1	Harness coil/electronic card
23#	L08812801	1	Spacer
24	56325761	1	Fuse cover
25#	L08603715	1	Cable fuses/ electronic card
26#	L08603934	1	Electromagnetic switch brushes
27	56325752	1	Harness fuses/batteries
28	56325754	1	Fuse 25A
29#	L08603727	1	Fuse 30A
30#	L08812996	1	Battery charger
31#	L08812872	1	Fuse 15A
32	56325719	1	Switch, complete
33	56325750	1	Lead cable
34	56325747	1	Strand red, battery clamp + / electronic card
35	56325756	1	Strand black, battery clamp -/ electronic card
36	56325745	1	Strand black, battery clamp -/ traction card
37#	L08812371	1	Potentiometer speed adjuster
38#	L08603929	1	Harness click off
39#	L08812758	1	Battery container
40	56325746	1	Connection
41#	L08812093	4	Cap for battery clamp

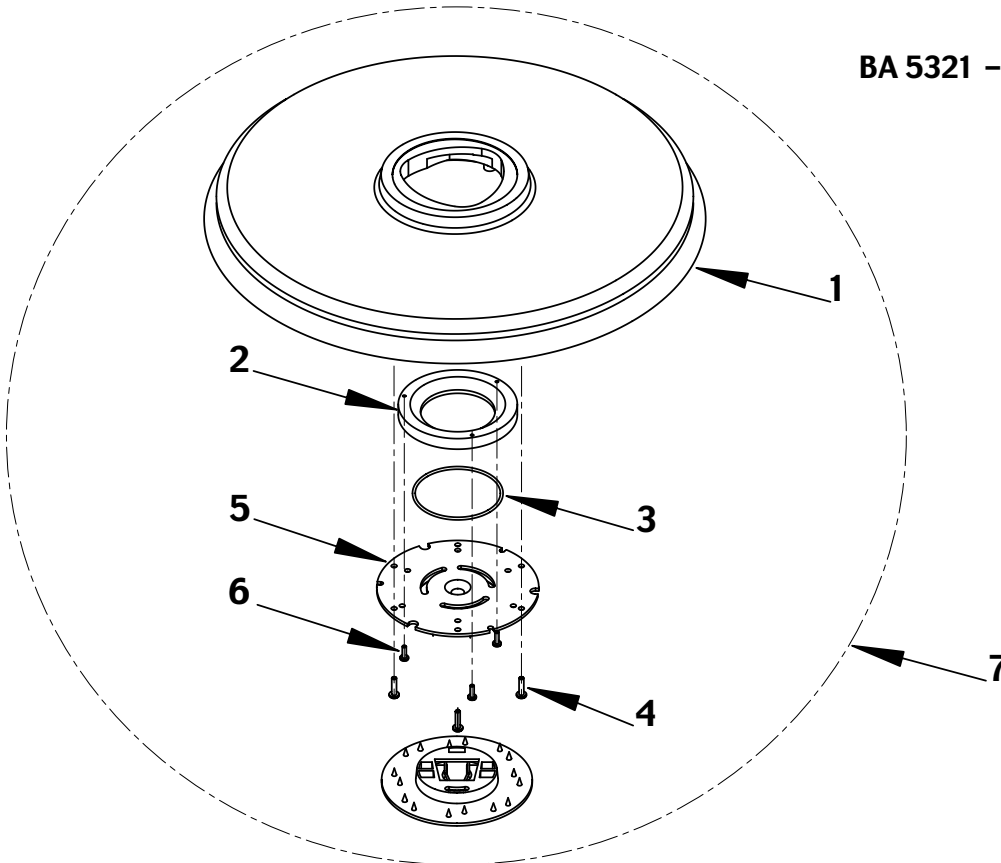
BA 6124D



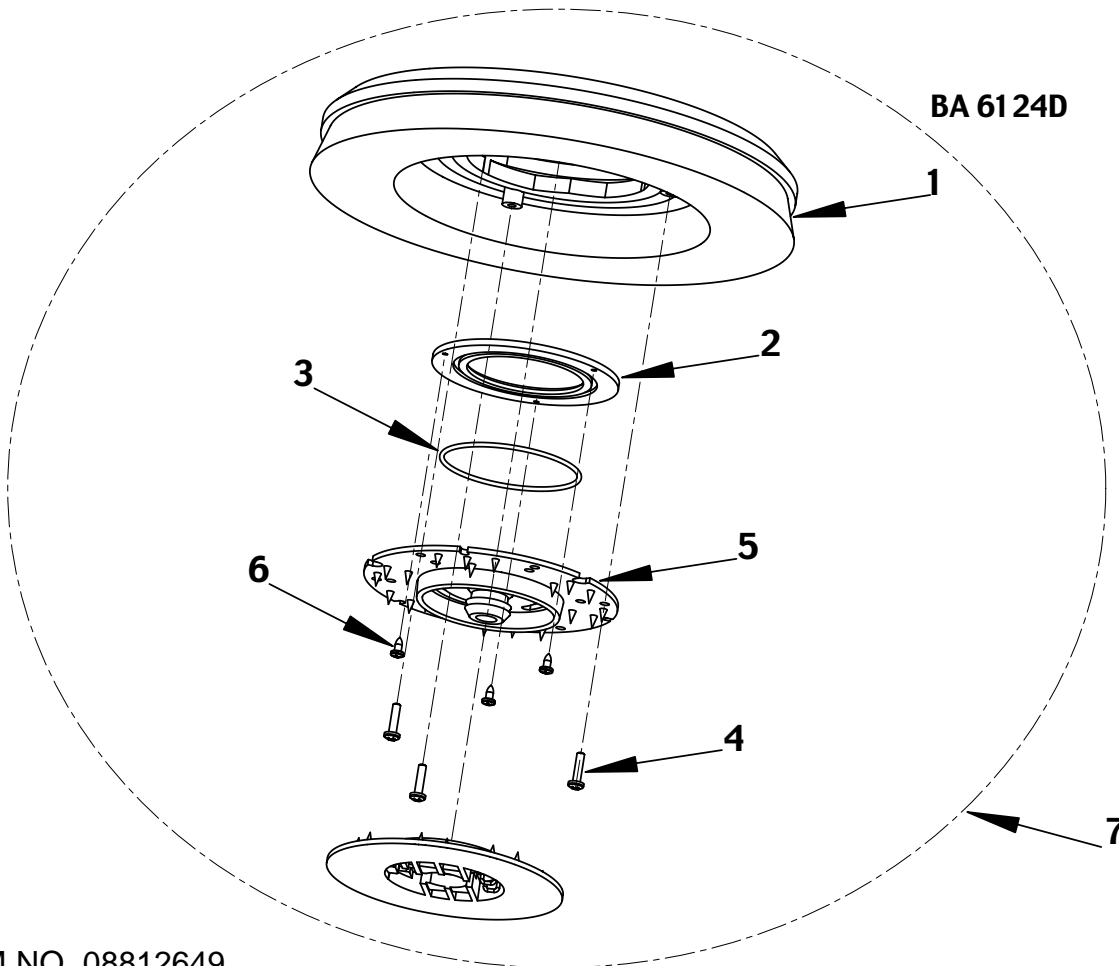
2003-02	Wiring system BA 6124D with battery charger			
	BA 5321 - BA 5321D - BA 6124D			31

Item no.	Ref. No.	Qty	Description
1	56340083	1	Cable fixing block
2	56325661	2	Screw cyl hd thd form 3,6x16
3	56325733	1	Harness - traction
4#	L08812377	1	Contact for micro
5#	L08812064	2	Battery clamp -
6#	L08812292	1	Potentiometer traction adjuster
7#	L08812063	2	Batthey clamp +
8	56325734	3	Plug
9	56325736	1	Harness vacuum mot./elect. card
10	909 5014 000	1	Harness brush motor
11	56325738	1	Traction card
12#	L08812814	1	Electronic card release 3
13#	L08812354	1	Gasket
14	56325740	1	Kit closure electronic card
15	56325723	4	Screw cyl hd 4x70
16#	L08812284	1	Cover electronic card
17	56325725	1	Cable for electronic card cover
18	56325741	1	Led red
19	56325742	1	Harness machine
20	56325743	1	Support for Electronic Card
21	145 0300 000	1	Electromagnetic switch vacuum motor
22#	L08603717	1	Harness coil/electronic card
23#	L08812801	1	Spacer
24	56325761	1	Fuse cover
25#	L08603715	1	Cable fuses/ electronic card
26#	L08603934	1	Electromagetic switch brushes
27	56325752	1	Harness fuses/batteries
28	56325754	1	Fuse 25A
29#	L08603727	1	Fuse 30A
30#	L08812996	1	Battery charger
31#	L08812872	1	Fuse 15A
32	56325719	1	Switch
33	56325750	1	Lead cable
34	56325747	1	Strand red,batthey clamp + / electronic card
35	56325756	1	Strand black, batthey clamp -/ electronic card
36	56325745	1	Strand black, batthey clamp -/ traction card
37#	L08812371	1	Potentiometer speed adjuster
38	909 5015 000	1	Harness click off
39#	L08812758	1	Battery container
40	56325746	1	Connection
41#	L08812093	4	Cap for battery clamp

BA 5321 - BA 5321D



BA 6124D



2003-02	PAD HOLDER ASSEMBLIES		
	BA 5321 - BA 5321D - BA 6124D		33

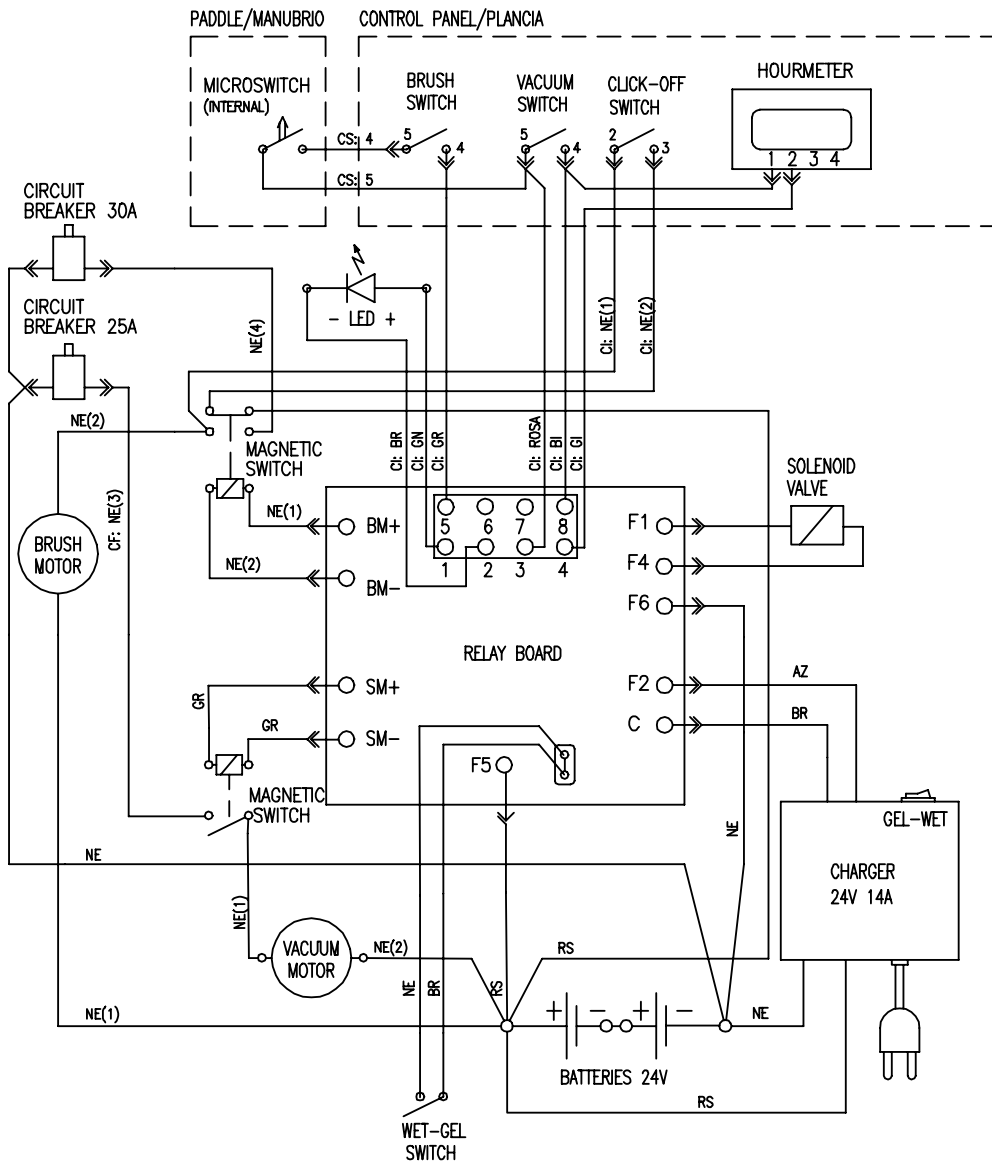
Item Ref. No. Qty Description  
no.

BA 5321 - BA 5321D

1#	L08812466	1	Pad holder
2#	L08603966	1	Ring for pad
3#	L08603965	1	Seal
4#	L08812590	3	Screw cyl hd 4.6x19.2 thd form
5#	L08837030	1	Hub
6#	L08603244	3	Screw cyl 3.9x13 thd form
7	56325502	1	Pad Holder Kit

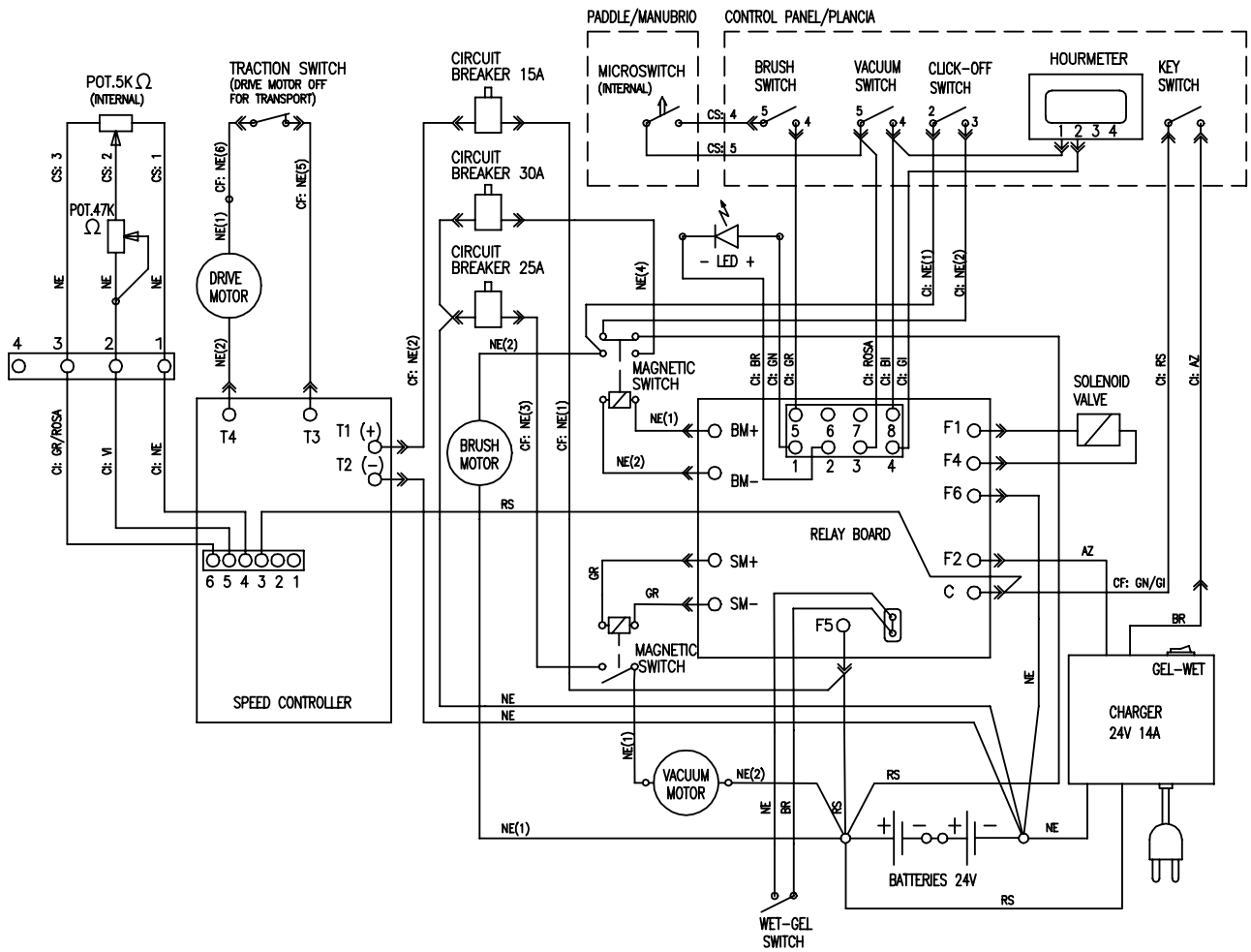
BA 6124D

1#	L08603841	1	Pad holder
2#	L08603936	1	Ring for pad
3#	L08603965	1	Seal
4#	L08812590	3	Screw cyl hd 4.6x19.2 thd form
5#	L08837030	1	Hub
6	145 5872 000	3	Screw 4.2x9.5 thd form SS
7#	L08603939	1	Pad Holder Kit



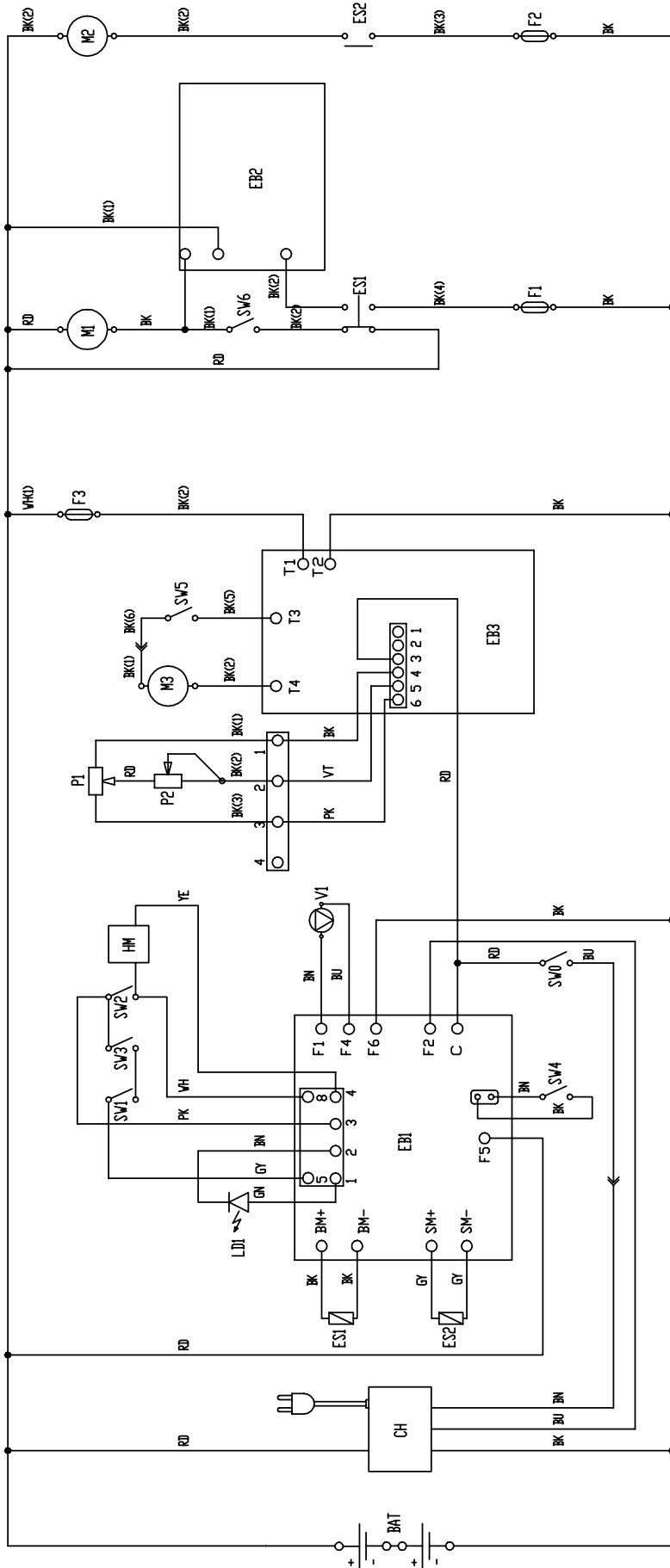
CI: CABLE INTERNAL - CAVI INTERNI  
 CF: CABLE FUSE - CAVI FUSIBILI  
 CS: CABLE SWITCH HOUSING - CAVI INTERRUTTORI

TABELLA COLORI	COLORS CODES
AZ	BLEU
BI	WHITE
GI	YELLOW
GR	GREY
BR	BROWN
NE	BLAK
ROSA	PINK
RS	RED
VI	VIOLET
OR	ORANGE
GN	GREEN



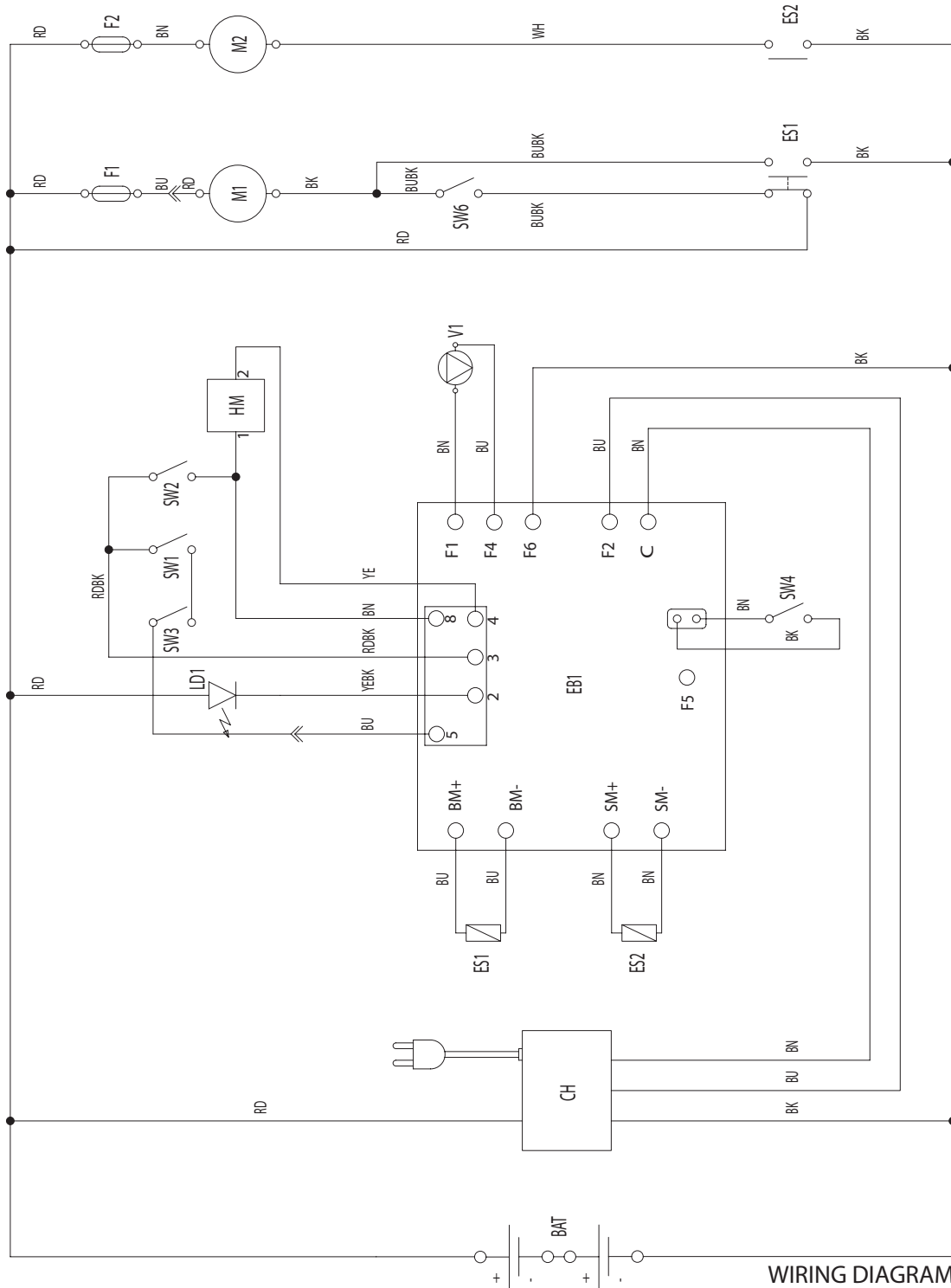
CI: CABLE INTERNAL - CAVI INTERNI  
 CF: CABLE FUSE - CAVI FUSIBILI  
 CS: CABLE SWITCH HOUSING - CAVI INTERRUITORI

TABELLA COLORI	COLORS CODES
AZ	BLEU
BI	WHITE
GI	YELLOW
GR	GREY
BR	BROWN
NE	BLACK
ROSA	PINK
RS	RED
VI	VIOLET
OR	ORANGE
GN	GREEN



COMPONENTS	
BAT	24V BATTERIES
CH	24V 13A BATTERY CHARGER
EB1	LOGIC ELECTRONIC BOARD
EB2	BRUSHES ELECTRONIC BOARD
EB3	DRIVE ELECTRONIC BOARD
ES1	BRUSHES ELECTROM. SWITCH
ES2	VACUUM ELECTROM. SWITCH
F1	BRUSHES MOT CIRC BREAKER(30A)
F2	VACUUM MOT CIRC BREAKER(25A)
F3	DRIVE MOT CIRC BREAKER(5A)
HM	HOURMETER
LDI	BATTERIES STATUS LED
M1	BRUSHES MOTOR
M2	VACUUM MOTOR
M3	DRIVE MOTOR
P1	DRIVE SPEED POTENT (5KOhm)
P2	DRIVE MAX.SPEED POTENT(47KOhm)
SW0	KEY SWITCH
SW1	BRUSHES SWITCH
SW2	VACUUM SWITCH
SW3	PADDLE MICROSWITCH
SW4	PB/GEL BATTERIES SELECTOR
SW5	TRACTION SWITCH
SW6	CLICK-OFF SWITCH
VI	WATER ELECTROVALVE

COLORS CODES	
BK	BLACK nero
BU	BLUE azzurro
BN	BROWN marrone
GN	GREEN verde
GY	GREY grigio
OG	ORANGE arancio
PK	PINK rosa
RD	RED rosso
VI	VIOLET viola
WH	WHITE bianco
YE	YELLOW giallo

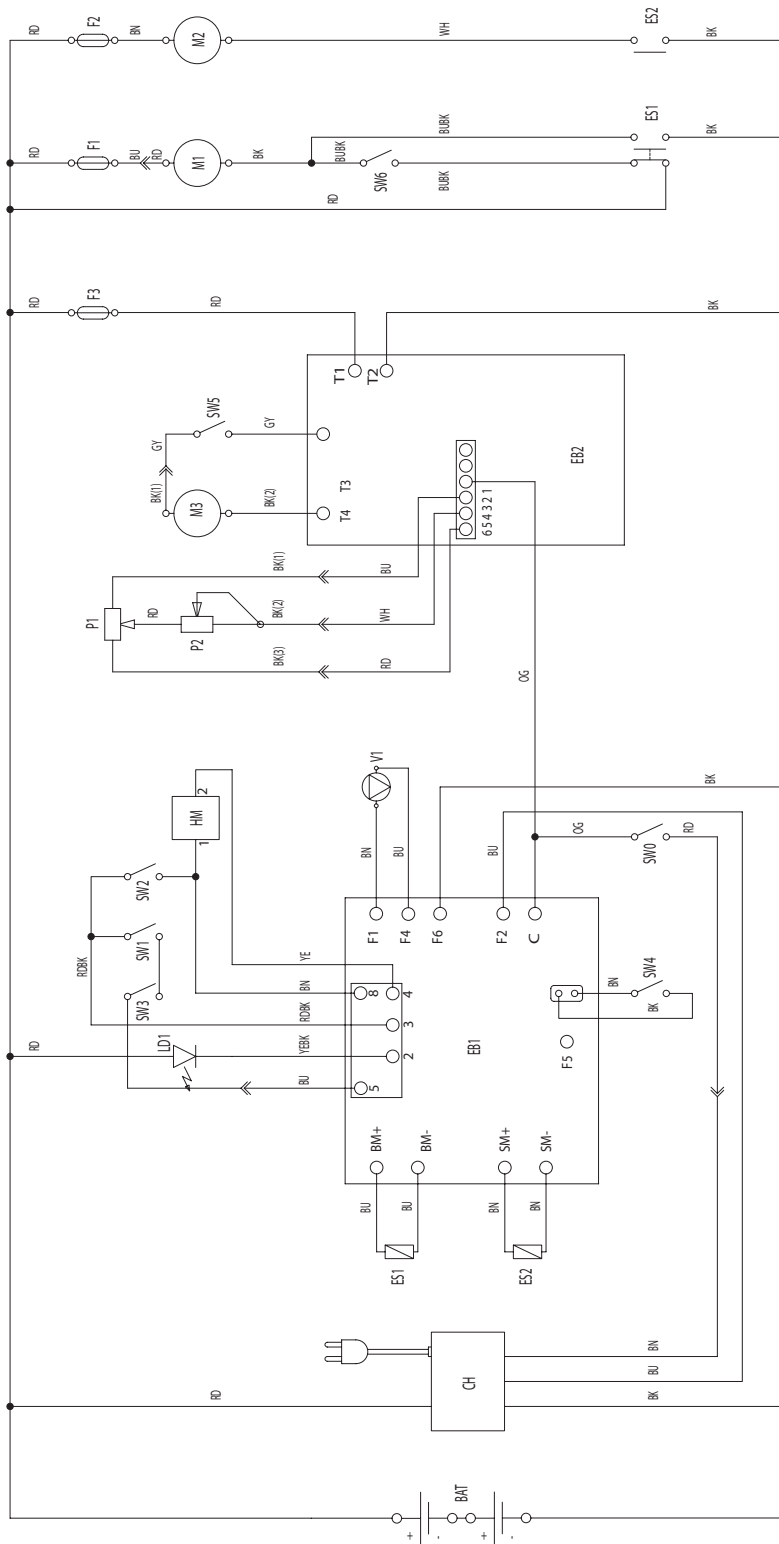


WIRING DIAGRAM  
BA 5321 - 01/06/04

COMPONENTS			
BAT	24V BATTERIES	SW2	VACUUM SWITCH
CH	24V 13A BATTERY CHARGER	SW3	PADDLE MICROSWITCH
EB1	LOGIC ELECTRONIC BOARD	SW4	PB/GEL BATTERIES SELECTOR
ES1	BRUSHES ELECTROM. SWITCH	SW6	CLICK-OFF SWITCH
ES2	VACUUM ELECTROM. SWITCH	V1	WATER ELECTROVALVE
F1	BRUSHES MOTOR CIRCUIT BREAKER (30A)		
F2	VACUUM MOTOR CIRCUIT BREAKER (25A)		
HM	HOURMETER		
LD1	BATTERIES STATUS LED		
M1	BRUSHES MOTOR		
M2	VACUUM MOTOR		
SW1	BRUSHES SWITCH		

COLORS CODES		
BK	BLACK	nero
BU	BLUE	azzurro
BN	BROWN	marrone
GN	GREEN	verde
GY	GREY	grigio
OG	ORANGE	arancio
PK	PINK	rosa
RD	RED	rosso
VT	VIOLET	viola
WH	WHITE	bianco
YE	YELLOW	giallo

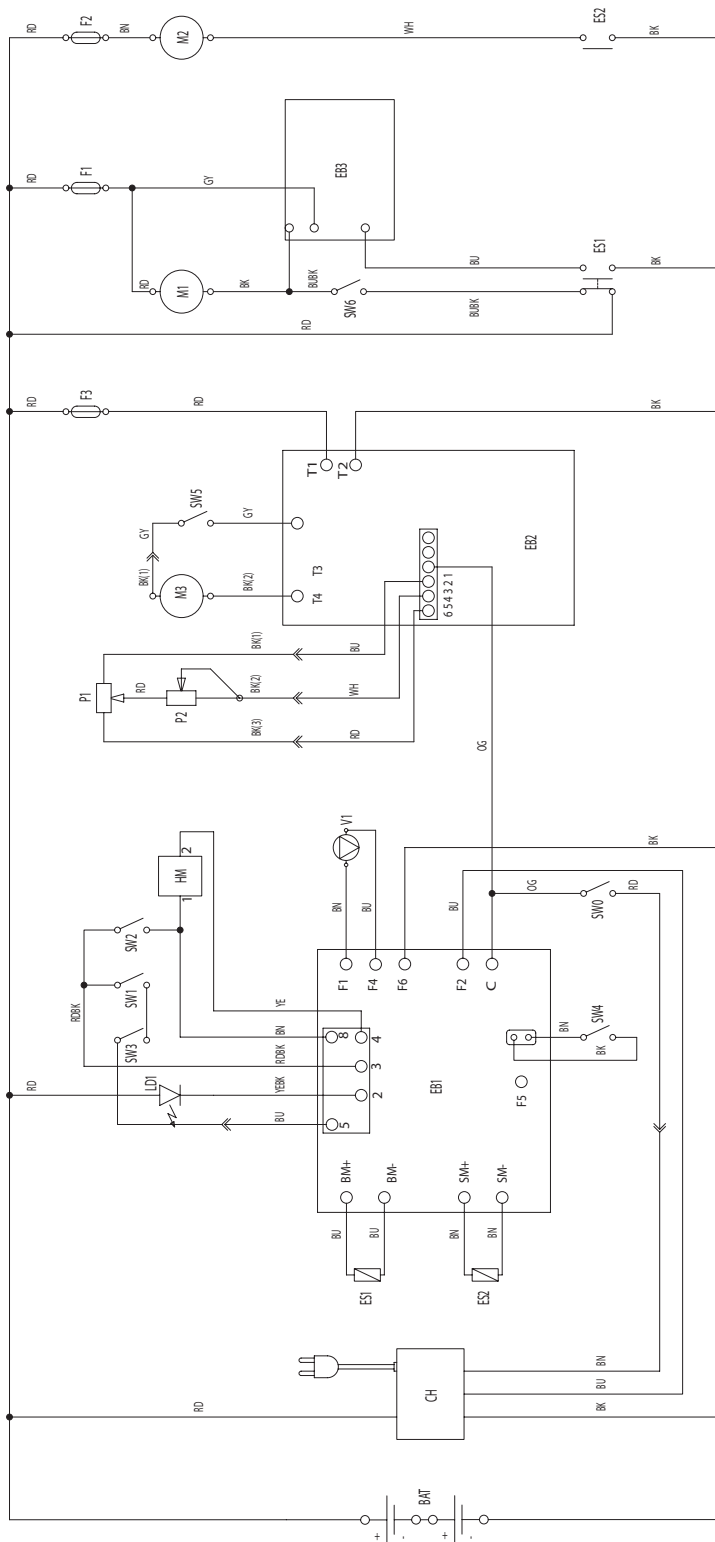
WIRING DIAGRAM  
BA 5321D - 01/06/04



COMPONENTS			
BAT	24V BATTERIES	M2	VACUUM MOTOR
CH	24V/13A BATTERY CHARGER	M3	DRIVE MOTOR
EB1	LOGIC ELECTRONIC BOARD	P1	DRIVE SPEED POTENTIOMETER (5kOhm)
EB2	DRIVE ELECTRONIC BOARD	P2	DRIVE MAX SPEED POTENTIOMETER (47kOhm)
ES1	BRUSHES ELECTROM. SWITCH	SW0	KEY SWITCH
ES2	VACUUM ELECTROM. SWITCH	SW1	BRUSHES SWITCH
F1	BRUSHES MOTOR CIRCUIT BREAKER (30A)	SW2	VACUUM SWITCH
F2	VACUUM MOTOR CIRCUIT BREAKER (25A)	SW3	PADDLE MICROSWITCH
F3	DRIVE MOTOR CIRCUIT BREAKER (15A)	SW4	PB/GEL BATTERIES SELECTOR
HM	HOURMETER	SW5	TRACTION SWITCH
LD1	BATTERIES STATUS LED	SW6	CLICK-OFF SWITCH
M1	BRUSHES MOTOR	V1	WATER ELECTROVALVE

COLORS CODES		
BK	BLACK	nero
BU	BLUE	azzurro
BN	BROWN	marrone
GN	GREEN	verde
GY	GREY	grigio
IG	ORANGE	arancio
PK	PINK	rosa
RD	RED	rosso
VT	VIOLET	viola
WH	WHITE	bianco
YE	YELLOW	giallo

WIRING DIAGRAM  
BA 6124D - 01/06/04



COMPONENTS	
BAT	24V BATTERIES
CH	24V 13A BATTERY CHARGER
EB1	LOGIC ELECTRONIC BOARD
EB2	DRIVE ELECTRONIC BOARD
EB3	BRUSH ELECTRONIC BOARD
ES1	BRUSHES ELECTROM. SWITCH
ES2	VACUUM ELECTROM. SWITCH
F1	BRUSHES MOTOR CIRCUIT BREAKER (30A)
F2	VACUUM MOTOR CIRCUIT BREAKER (25A)
F3	DRIVE MOTOR CIRCUIT BREAKER (15A)
HM	HOURMETER
LD1	BATTERIES STATUS LED
M1	BRUSHES MOTOR
M2	BRUSHES MOTOR
M3	DRIVE MOTOR
P1	DRIVE SPEED POTENTIOMETER (540ohm)
P2	DRIVE MAX SPEED POTENTIOMETER (470ohm)
SW0	KEY SWITCH
SW1	BRUSHES SWITCH
SW2	VACUUM SWITCH
SW3	PADDLE MICROSWITCH
SW4	PB/GEL BATTERIES SELECTOR
SW5	TRACTION SWITCH
SW6	CLICK-OFF SWITCH
V1	WATER ELECTROVALVE

COLORS CODES	
BK	BLACK <i>nero</i>
BU	BLUE <i>azzurro</i>
BN	BROWN <i>marrone</i>
GN	GREEN <i>verde</i>
GY	GREY <i>grigio</i>
OG	ORANGE <i>arancio</i>
PK	PINK <i>rosa</i>
RD	RED <i>rosso</i>
VT	VIOLET <i>viola</i>
WH	WHITE <i>bianco</i>
YE	YELLOW <i>giallo</i>

2003-02	RECOMMENDED SPARE PARTS			
	BA 5321 - BA 5321D - BA 6124D			40

Item no.	Ref. No.	Qty	Description
			Tank Assembly
	L08812712	1	Tank lid with seal
	56325529	1	Filter
	L08603883	1	Suction hose
	L08603869	1	Hose clean water
	L08603903	1	Kit clean water hose
	L08812873	1	Drain hose kit
	L08603888	1	Vacuum motor 24V w/connector
	909 5042 000	1	Acoustic insulation
	56325523	1	Foam acoustic upper Chassis system
	L08603792	2	Drive wheel w/Hub BA 5321D/BA 6124D
	L08603696	2	Wheel w/Hub BA 5321
	L08603954	1	Caster Pedal lifting
	56325625	1	Screw Hex Hd M8x25 Brush drive system BA 5321/BA 5321D
	L08812919	1	Brush motor + gear case complete
	L08603848	1	Brush motor
	L08603850	1	Carbon brushes kit
	[56325504]	1	Brush polypropylene
	56325611	1	Polygon holder
	56325622	2	Buffer
	56003366	2	Washer 5x10
	56325623	2	Screw countersunk Hd. 8x12 Brush drive system BA 6124 D
	L08603820	1	Brush motor
	L08603949	1	Carbon brushes kit
	56003366	4	Washer 5x10 Squeegee systems BA 5321/BA 5321D/BA 6124D
	56325711	1	Squeegee lift cable
	56393285	1	Squeegee blade front BA 5321/BA 5321D
	56325685	1	Squeegee blade rear BA 5321/BA 5321D
	L08603830	1	Squeegee blade front BA 6124D
	L08603832	1	Squeegee blade rear BA 6124D Switch housings BA 5321/BA 5321D/BA 6124D
	56340083	1	Cables fixing block
	56325662	1	Clamp
	56325657	1	Potentiometer fork BA 5321D/BA 6124D
	56325654	1	Drive control spring
	56325653	4	Washer flat nylon 9x25 Solution system
	56325649	1	Solenoid valve kit
	L08812642	1	Solenoid valve 24V
	L08603864	1	Filter w/hose barb kit Control panel assembly
	56340199	1	Switch pump/vacuum
	L08603193	1	Plastic bracket w/seal and switch protection
	56325718	1	Key switch complete BA 5321D/BA 6124D Wiring systems BA 5321/BA 5321D/BA 6124D
	56325769	1	Harness control panel/microswitch BA 5321
	56325733	1	Harness traction
	145 0300 000	1	Electromagnetic switch vacuum motor
	L08603934	1	Electromagnetic switch brush/es
	56325738	1	Traction card
	L08812814	1	Electronic card release 3 (from Serial no.1514570 for machine before this serial number contact the Service Center)





Nilfisk-Advance, Inc.  
14600 21st Avenue North  
Plymouth, MN, 55447-3408  
[www.nilfisk-advance.com](http://www.nilfisk-advance.com)  
Phone: 800-989-2235  
Fax: 800-989-6566  
©2003 Nilfisk-Advance, Inc.,  
Plymouth, MN 55447-3408  
Printed in Italy