



## Electronic Service Manuals

This electronic document is provided as a service to our customers. We do not create the contents of the information contained in this document. Should you have detailed questions pertaining to the information contained in this document, you may contact Michco, or the manufacturer which provided the original information in this electronic deliverable. Michco's only part in this electronic deliverable was the electronic assembly process. By providing this manual on line we are not guaranteeing parts availability.

You may contact Michco through the following methods:

Phone (517) 484-9312 or (800) 331-3339

2011 N. High St. -- Lansing, Michigan -- 48906

Fax: (517) 484-9836

Email: [CustServe@Michco.com](mailto:CustServe@Michco.com)

Web site: [www.Michco.Com](http://www.Michco.Com)

Parts Web site: [www.FloorMachineParts.Com](http://www.FloorMachineParts.Com)

Order Parts on Line at:

**[www.FloorMachineParts.Com](http://www.FloorMachineParts.Com)**

Directly to Parts & Service:

By Email: **[Shop@Michco.com](mailto:Shop@Michco.com)**

By Fax: (517) 702-2041

By Voice: Use numbers above.

**Serving the Cleaning Industry Since 1922**

Notice: All copyrighted material remains property of original owners, all trademarks are property of respective owners. Manuals are subject to Manufacturer's reproduction limitations. Originals or reproductions were provided by manufacturers through a request. We make no warranty as to the correctness of information provided in this document and you assume all risk. By placing these manuals on line we are not declaring our corporation to be an manufacturer authorized dealer or provider, please check our web site for authorized manufacturers we represent.



# *Cricket*<sup>TM</sup>

## *AutoMop*<sup>TM</sup>

Operating instructions (ENG)

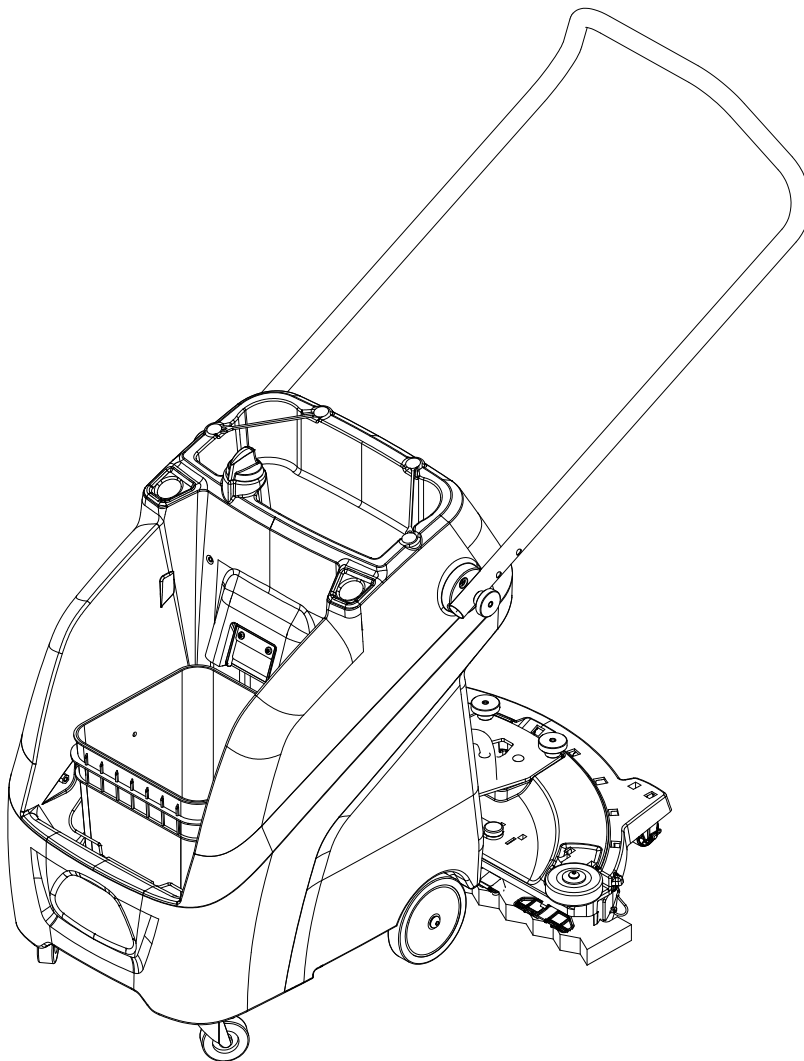
MODELS:

CKTA24  
10067000

CKTA24H  
10067020

CKTA24P  
10067030

CKTA24D  
10067040



Read these instructions before using the machine.



## **Machine Data Label**

---

Model: \_\_\_\_\_

Date of Purchase: \_\_\_\_\_

Serial Number: \_\_\_\_\_

Dealer: \_\_\_\_\_

Address: \_\_\_\_\_

Phone Number: \_\_\_\_\_

Sales Representative: \_\_\_\_\_

### **Overview**

The Cricket automop is a hard floor cleaning machine intended for commercial use. This appliance applies a cleaning solution to the floor and then pumps the soiled water back into the recovery bucket.

## **Warranty Registration**

Thank you for purchasing a Windsor product. Warranty registration is quick and easy. Your registration will allow us to serve you better over the lifetime of the product.

To register your product go to :

[www.windsorind.com/WarrantyRegistration.aspx](http://www.windsorind.com/WarrantyRegistration.aspx)

For customer assistance:

1-800-444-7654



**Overview** .....2  
**Table of Contents** .....3  
**How To Use This Manual** .....4

**Safety**

HAZARD INTENSITY LEVEL .....7  
Safety Labels .....9

**Operations**

Machine Operation .....10  
Chemicals .....10  
Technical Specifications .....11  
How This Machine Works .....12  
Pre-Run Inspection .....13  
Equipment Set-up .....13  
Cleaning .....14

**Maintenance**

Periodic Maintenance .....16  
Daily/Regular Maintenance .....16  
Pad Installation .....17  
Squeegee Installation .....18  
Troubleshooting .....19

**Options Installation**

Front Bucket Bracket .....22  
Accessory Holder .....24  
Accessory Hook .....25  
Wringer Bracket .....26

**Parts**

Decals .....30  
Deck - Lift .....32  
Deck - Squeegee .....34  
Handle and Bucket .....36  
Recovery - Pump .....38  
Recovery - Wheel & Pump Mounting .....40  
Solution .....42  
Wheels .....44

**Models with Options**

1.006-702.0 .....48  
1.006-703.0 .....50  
1-006-704-0 .....52  
Suggested Spare Parts .....54  
Serial Numbers .....55

## How To Use This Manual

This manual contains the following sections:

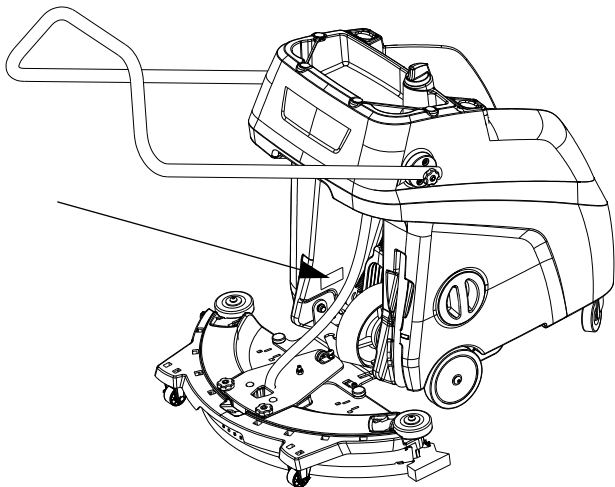
- How to Use This Manual
- Safety
- Operations
- Maintenance
- Parts List

The HOW TO USE THIS MANUAL section will tell you how to find important information for ordering correct repair parts.

Parts may be ordered from authorized dealers. When placing an order for parts, the machine model and machine serial number are important. Refer to the MACHINE DATA box which is filled out during the installation of your machine. The MACHINE DATA box is located on the inside of the front cover of this manual.

Model:	_____
Date of Purchase:	_____
Serial Number:	_____
Dealer:	_____
Address:	_____
Phone Number:	_____
Sales Representative:	_____

The model and serial number of your machine is located on the back of the machine.



The SAFETY section contains important information regarding hazardous or unsafe practices of the machine. Levels of hazards are identified that could result in product damage, personal injury, or severe injury resulting in death.

The OPERATIONS section is to familiarize the operator with the operation and function of the machine.

The MAINTENANCE section contains preventive maintenance to keep the machine and its components in good working condition. They are listed in this general order:

- Periodic Maintenance
- Daily/Regular Maintenance
- Pad Installation
- Squeegee Installation
- Troubleshooting

The PARTS LIST section contains assembled parts illustrations and corresponding parts list. The parts lists include a number of columns of information:

- **REF** – column refers to the reference number on the parts illustration.
- **PART NO.** – column lists the part number for the part.
- **PRV NO.** – reference number.
- **QTY** – column lists the quantity of the part used in that area of the machine.
- **DESCRIPTION** – column is a brief description of the part.
- **SERIAL NO. FROM** – If this column has an (\*) and a Reference number, see the SERIAL NUMBERS page in the back of your manual. If column has two asterisk (\*\*), call manufacturer for serial number. The serial number indicates the first machine the part number is applicable to. The main illustration shows the most current design of the machine. When a boxed illustration is shown, it displays the older design.
- **NOTES** – column for information not noted by the other columns.

*NOTE: If a service or option kit is installed on your machine, be sure to keep the KIT INSTRUCTIONS which came with the kit. It contains replacement parts numbers needed for ordering future parts.*

*NOTE: The manual part number is located on the lower left corner of the front cover.*

## IMPORTANT SAFETY INSTRUCTIONS

When using this machine, basic precaution  
must always be followed, including the following:

**READ ALL INSTRUCTIONS BEFORE USING THIS MACHINE.**

**⚠ WARNING:** To reduce the risk of injury:

**During operation**, attention shall be paid to other persons, especially children.

Use only as described in this manual. Use only manufacturer's recommended components and attachments.

If the machine is not working properly, has been dropped, damaged, left outdoors, or dropped into water, return it to an authorized service center.

Do not operate the machine with any openings blocked. Keep openings free of debris that may reduce airflow.

This machine is intended for cleaning hard floors only.

This machine is not suitable for picking up health endangering dust.

Do not operate this machine near flammable fluids, dust or vapors.

This machine is suitable for commercial use, for example in hotels, schools, hospitals, factories, shops and offices for more than normal housekeeping purposes.

Maintenance and repairs must be done by qualified personnel.

## READ AND SAVE THESE INSTRUCTIONS

## **IMPORTANTES MESURES DE SÉCURITÉ**

**L'utilisation d'un appareil électrique demande certaines précautions:  
LIRE TOUTES LES INSTRUCTIONS AVANT DE FAIRE FONCTIONNER (CET  
APPAREIL).**

### **! AVERTISSEMENT:**

**Pour réduire les risques d'incendie, de chocs électriques, ou de blessures.**

Durant la manoeuvre de la machine, prendre garde aux personnes environnantes et notamment aux enfants.

N'utiliser cette machine que comme décrit dans le présent manuel. N'utiliser que les composants et les accessoires conseillés par le fabricant.

Lorsque la machine ne fonctionnant pas correctement, a fait l'objet d'une chute ou d'une détérioration, a été laissée à l'extérieur, est tombée dans l'eau, la retourner au centre de service agréé.

Ne pas opérer la machine lorsque les conduits de ventilation sont bloquées. Débarrasser les débris des conduits, car ils peuvent réduire l'écoulement d'air.

Cette machine est conçue pour le nettoyage des sols durs uniquement.

Cette machine n'est pas adaptée au ramassage de poussières dangereuses.

Ne pas l'utiliser près de liquides, de poussières ou de vapeurs inflammables.

Cette machine est destinée à un usage commercial. Elle est recommandée davantage pour les domaines hôtelier, scolaire, hospitalier, industriel ou pour les bureaux, les chaînes de magasin, que pour un usage domestique normal.

L'entretien et les réparations de la machine doivent être effectuées par un personnel qualifié.

## **CONSERVER CES INSTRUCTIONS**

The following symbols are used throughout this guide as indicated in their descriptions:

### **HAZARD INTENSITY LEVEL**

There are three levels of hazard intensity identified by signal words -**WARNING** and **CAUTION** and **FOR SAFETY**. The level of hazard intensity is determined by the following definitions:

#### **⚠ WARNING:**

**WARNING** - Hazards or unsafe practices which **COULD** result in severe personal injury or death.

#### **⚠ CAUTION:**

**CAUTION** - Hazards or unsafe practices which could result in minor personal injury or product or property damage.

#### **FOR SAFETY: To Identify actions which must be followed for safe operation of equipment.**

Report machine damage or faulty operation immediately. Do not use the machine if it is not in proper operating condition. Following is information that signals some potentially dangerous conditions to the operator or the equipment. Read this information carefully. Know when these conditions can exist. Locate all safety devices on the machine. Please take the necessary steps to train the machine operating personnel.

#### **FOR SAFETY:**

##### **DO NOT OPERATE MACHINE:**

Unless Trained and Authorized.

Unless Operation Guide is Read and understood.

In Flammable or Explosive areas.

In areas with possible falling objects.

##### **WHEN SERVICING MACHINE:**

**Avoid moving parts. Do not wear loose clothing; jackets, shirts, or sleeves when working on the machine.**

**Use only manufacturer approved replacement parts.**

Les symboles ci-dessous sont utilisés à travers ce manuel comme illustré dans leurs descriptions:

### **DEGRÉS DE RISQUES EN CAS DE DANGER**

Il existe trois degrés de risques identifiés par les termes signalétiques -AVERTISSEMENT et ATTENTION et POUR VOTRE SÉCURITÉ. Le degré de risque est défini de la manière suivante:

#### **⚠ AVERTISSEMENT:**

**AVERTISSEMENT** - Dangers ou méthodes dangereuses qui POURRAIENT provoquer de graves blessures ou entraîner la mort.

#### **⚠ ATTENTION:**

**ATTENTION** - Dangers ou méthodes dangereuses qui pourraient provoquer des blessures légères ou une détérioration du produit ou des biens immobiliers.

**POUR VOTRE SÉCURITÉ: ce signe permet d'identifier les mesures de précaution à prendre pour assurer un bon fonctionnement du matériel.**

Rendre compte immédiatement d'une défaillance ou d'une détérioration de la machine. Ne pas utiliser la machine si celle-ci ne fonctionne pas correctement. Lire soigneusement les informations ci-dessous signalant certains dangers potentiels pour l'opérateur de la machine. L'opérateur doit être absolument au courant de ces dangers potentiels. Localiser tous les dispositifs de sécurité sur la machine. Il est conseillé de prendre les mesures nécessaires pour former le personnel opérateur.

#### **POUR VOTRE SÉCURITÉ:**

##### **NE PAS MANOEUVRER LA MACHINE:**

Lorsqu'on n'est pas expérimenté ou qualifié.

Lorsque le guide d'utilisation n'est pas été lu ou compris.

Dans des zones inflammables ou explosives.

Dans des zones où des objets peuvent tomber.

##### **LORS DE L'ENTRETIEN DE LA MACHINE:**

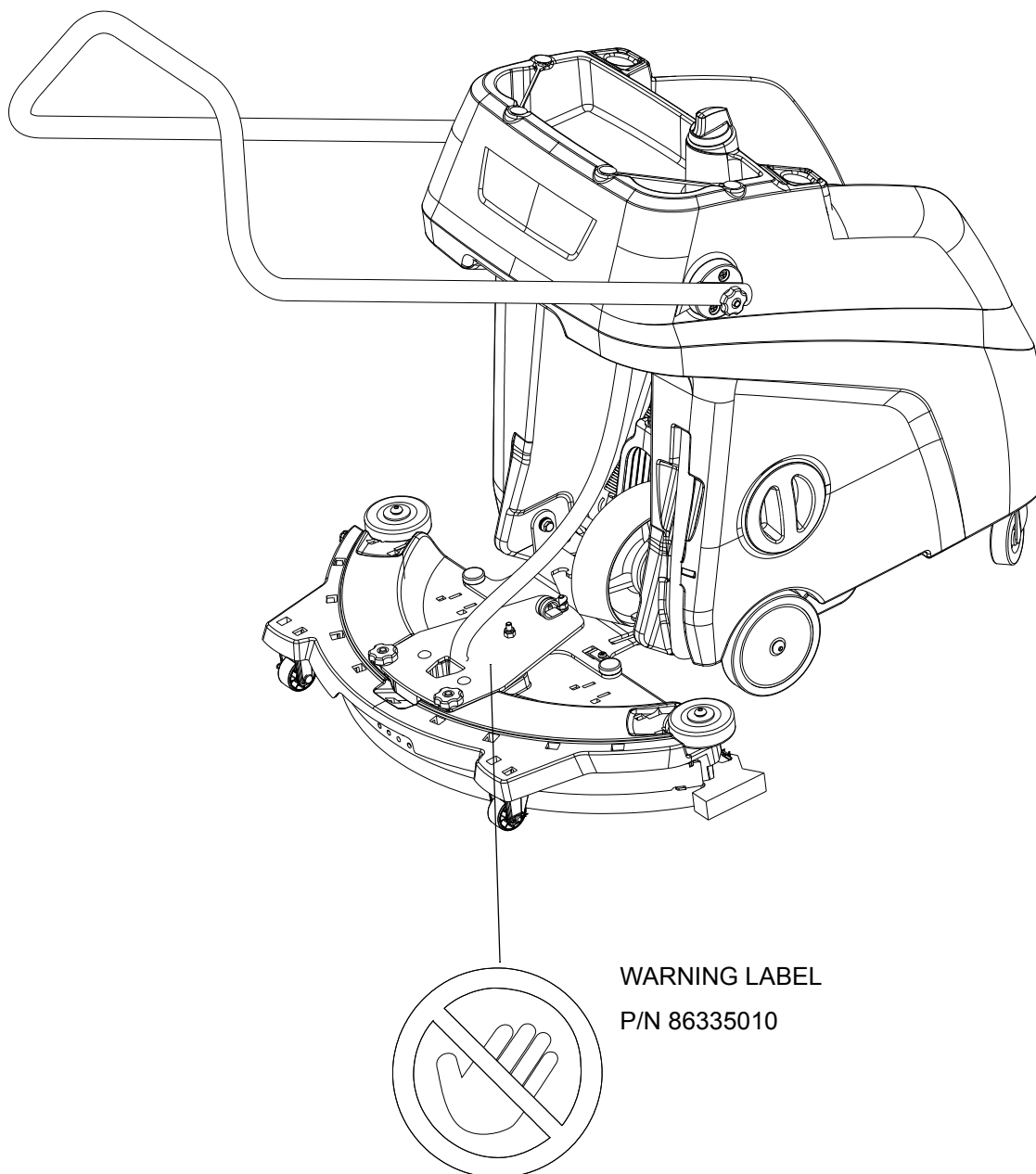
**Éviter les parties amovibles. Ne pas porter de vêtements amples, tels que des vestes, des chemises ou des vêtements avec manches lors de l'utilisation de la machine. Utiliser les pièces détachées homologuées.**

## Safety Labels

*NOTE: These drawings indicate the location of safety labels on the machine. If at any time the labels become illegible, promptly replace them.*

### EMPLACEMENT DE L'ÉTIQUETTE DE SÉCURITÉ

REMARQUE: Ces dessins indiquent l'emplacement des étiquettes de sécurité sur la machine. Si, à tout moment, les étiquettes deviennent illisibles, contactez votre représentant autorisé pour un remplacement rapide.



## Operations

---

### Machine Operation

#### **⚠ WARNING:**

Care must be exercised in the use of all chemicals. Chemicals are poisonous and can pose a health risk. Read and follow manufacturer's instructions regarding dangers and correct usages.

#### **⚠ AVERTISSEMENT:**

Les précautions appropriées doivent être prises lors de l'utilisation de tous les produits chimiques. Les produits chimiques sont toxiques et peuvent poser un risque pour la santé. Lire et suivre les instructions du fabricant concernant les dangers et les usages adéquats.

### Chemicals

#### Suitable Chemicals

- Alkalis
- Detergents
- Hydroxides
- Soaps
- Vinegar

#### Non-Compatible

- Aldehydes
- Aromatics Hydrocarbons
- SP Butyls
- Carbon Tetrachloride
- Chlorinated Hydrocarbons
- Lysol\*
- Methyl Ethel Ketone (MEK)
- Perchorethylene (perc)
- Phenolics
- Trichlorethylene
- D-Limonene

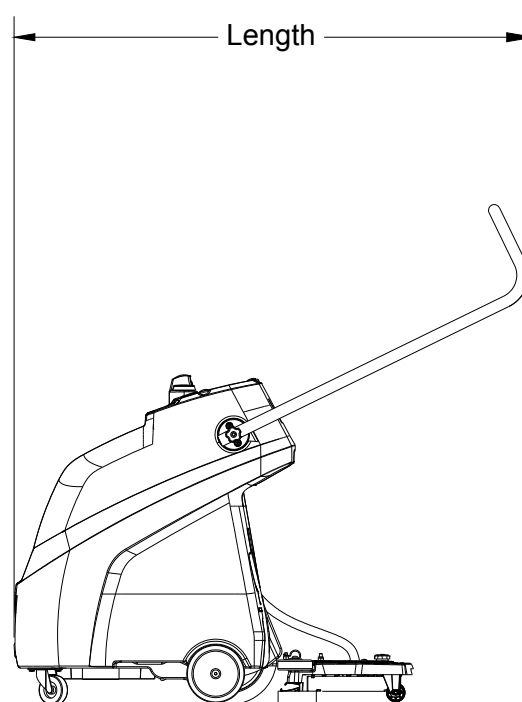
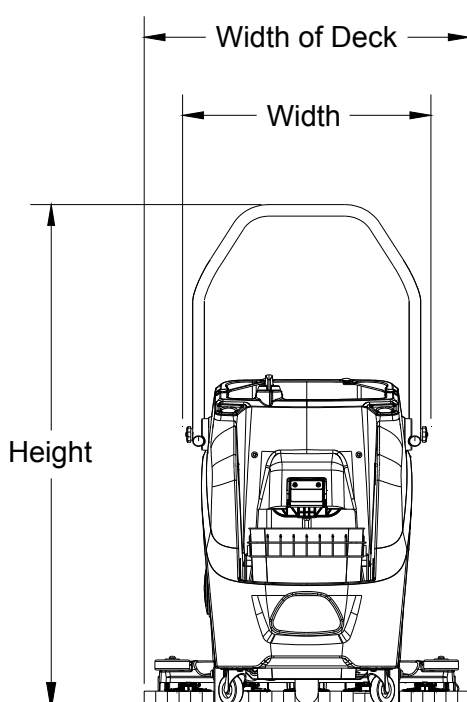
\*Registered Trademark

Only use chemicals approved for use with this machine. Use of non-compatible chemicals may cause machine damage and will not be covered under the warranty. Carefully read ingredients on manufacturer's label before using any product in this machine.

*NOTE: Do not use machine to recover floor finish.*

**Technical Specifications**

ITEM	MEASURE	
Solution Capacity	2.3 Gal	8.7Lt
Recovery Capacity	2.3 Gal	8.7Lt
Height	42.5 inches	1080MM (Handle adjusted to highest position)
Length	43.5 inches	1105MM (Handle adjusted to highest position)
Width without Deck	21.5 inches	546MM
Width of Deck	28 inches	711MM



**⚠ WARNING:**

This appliance is not intended for use by persons (including children) with reduced physical, sensory or mental capabilities, or lack of experience or knowledge, unless they have been given supervision or instruction concerning use of the appliance by a person responsible for their safety

**⚠ AVERTISSEMENT:**

Cet appareil n'est pas destiné à être utilisé par des gens (notamment des enfants) dont les capacités physiques, sensorielles ou mentales sont réduites, ou qui manquent d'expérience ou de connaissance, sauf s'ils ont été formés et encadrés pour l'utilisation de cet appareil par une personne responsable de leur sécurité.

## **Operations**

---

### **How This Machine Works**

The Automop is a manually propelled hard floor cleaner intended for commercial use. The Automop applies a cleaning solution onto a hard floor, scrubs the floor with a scrub pad, and pumps the soiled solution into the recovery bucket.

The Automops primary systems are the Solution System and the Recovery System.

The function of the Solution System is to store solution and deliver it to the floor. The Solution System consists of the solution tank, the solution valve and the scrub pad. Solution flows from the solution tank through the manually operated solution valve and onto the scrub pad to clean the floor

The function of the Recovery System is to pump the soiled solution from the floor to the recovery bucket. The recovery System consists of the squeegee, the recovery pump, and the recovery bucket. The recovery pump is driven off the Automops rear center wheel, and is pumping whenever the wheel is moving. The squeegee channels the soiled solution to the rear center of the scrub deck below the recovery pump pickup plate. When adequate solution is under the pickup plate the pump will pull the solution through the recovery hose and deposit the solution into the recovery bucket.

### Pre-Run Inspection

1. Check all fittings and connectors for proper assembly.
2. Check all hoses for leaks. Repair or replace any damaged hoses.

### Equipment Set-up

1. Using a clean container, fill the solution tank with clean hot water. The machine is equipped with two fill ports. A large covered port on the side of the machine and a smaller uncovered port on the top of the machine. When using the upper fill port, fill only until water reaches the full level mark on tank. Do not use water over 130°F.
2. Mix in cleaning concentrate, following manufacturer's instructions printed on container.

*NOTE: When using a powder cleaner, pre-mix with hot water in a clean container before adding to the solution tank.*

3. Install 3M Easy Trap Strip on scrub pad (Recommended).



- Place the 3M Easy Trap Strip material on top of the white pad so that the edge does not overlap the squeegee blade. If the 3M Easy Trap Strip material is taken from the bulk roll, be sure to use only 5 segments of material for each application.



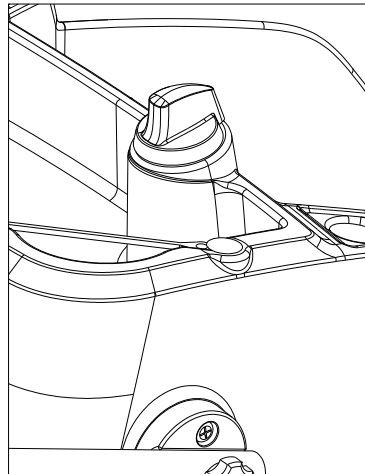
- Fold/wrap material over front edge of pad and hook material on the 5 plastic flippers to hold material in place.

## Operations

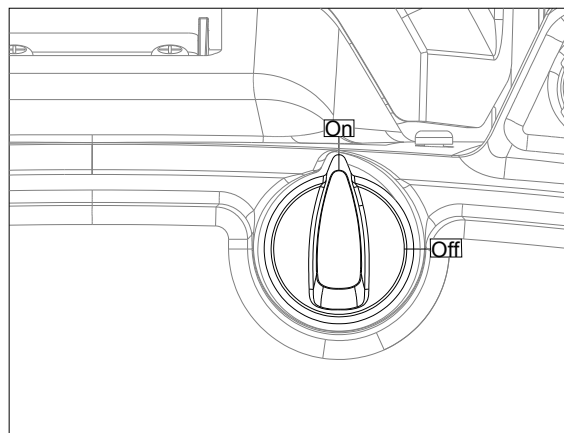
### Cleaning

1. Pre-sweep area to be cleaned to remove debris.
2. Lower deck to the floor.
3. Turn solution knob to open solution valve to desired flow rate. Solution will begin flowing as soon as knob is turned from "Off" position.
4. Push machine at normal walking pace. Clean solution should be seen flowing from hose on top of the deck after pushing the Automop 30-50 feet. Recovered solution should be seen flowing through hose located near the center of the deck.
5. When the solution tank is empty or cleaning is complete, turn the solution control knob to the off position. With the deck lowered, continue pushing the Automop 30-50 feet to minimize solution under the deck.
6. Raise the deck and wipe up remaining solution. If necessary, empty recovery bucket by lifting it from the Automop and properly disposing of recovered solution.

### Solution Control Knob



Top View





## Maintenance

### Periodic Maintenance

Periodically inspect all hoses and connections on your machine. Frayed or cracked hoses should be repaired or replaced to eliminate vacuum or solution loss.

### Daily/Regular Maintenance

1. Empty unused cleaning solution from the solution tank.
2. After each use, rinse tank with fresh water. Periodically inspect the recovery bucket and decontaminate if necessary, using a Hospital Grade Virucide or a 10-1 bleach to water solution. If necessary, use a soft bristle brush to clean machine components. Waste water should be disposed of properly.
3. Remove scrub pad and 3M Easy Trap Strip. Clean scrub pad and reattach to machine.

### CAUTION:

Do not allow machine to freeze.

SERVICE SCHEDULE	DAILY	WEEKLY
Check hoses for wear, blockages, or damage	*	
Check handles, knobs, pivot points and linkages for damage	*	
Clean out recovery tank and check float valve to make sure it moves freely	*	
Clean out solution tank and remove and clean vacuum intake screen	*	
Clean outside of all tanks and check for damage	*	
Check all gaskets for wear and leakage		*
Replace 3M Easy Trap Strip (Recommended)	*	
Check scrub pad for wear		*
Check for damaged or worn wheels	*	
Clean squeegee blade and check wear	*	
Clean wheels and castors	*	

## Pad Installation

Line up notches in pad with both ends of the squeegee and press firmly into place on all five plastic flippers.



## **Maintenance**

### **Squeegee Installation**

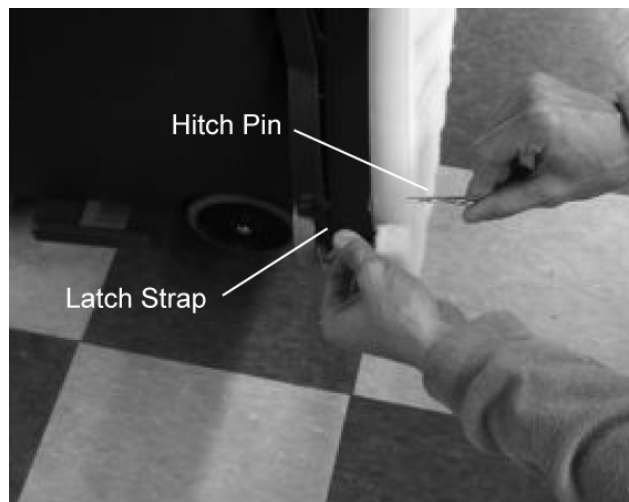
1. Assemble squeegee from right to left. Hook squeegee on metal hook on the right side and align notches with tabs until squeegee is hooked on the metal tab on the left side.
2. Slip the plastic strap under the tab (#1) on the right side of the deck and slide towards the left side so that the strap is hooked under the metal tab (#2).



3. Push the other end of the strap over tab on left side and install the pin to capture the end of the strap.

### **Replace or Rotate Squeegee Blades**

1. Remove hitch pin and retain.



2. Remove the black plastic latch strap.
3. Remove squeegee blade from deck housing, starting from the left side. Rotate the squeegee blade to a new edge position or replace as required. Each blade has four new edge positions.
4. Install squeegee blade onto deck housing by pushing blade onto retention features.
5. Install retention strap and hitch pin.

**Troubleshooting**

<b>Problem</b>	<b>Cause</b>	<b>Solution</b>
No Solution Flow	Solution Tank Empty	Fill Solution Tank
	Solution Valve Closed	Turn Solution Knob to Open Valve
	Hose Kinked or Clogged	Repair or Replace Hose
	Debris in Solution Valve	Remove Valve and Clean
Poor or No Solution Recovery	Machine Moving too Slow	Increase Machine Speed
	Debris in Recovery Outlet Check Valve	Clean Outlet Check Valve, ensure valve is fully seated on pump housing surface.
	Debris in Recovery Intake Grate/Check Valve	Clean Intake Grate/Check Valve
	Pump Drive Wheel Slipping	Clean and Dry Drive Wheel. Replace Drive Wheel if Worn to Height Equal to the Tip Wheels.
	Pump Diaphragm Damaged	Replace Pump Diaphragm
	Pump Drive Mechanism Loose or Damaged	Repair or Replace Mechanism Components
	Loose Hose	Tighten clamps/Ensure hose seated properly
Floor surface too rough or uneven.	Use machine on sealed/smooth floor.	
Squeegee Leaving Streaks	Debris in Squeegee	Clean Squeegee and Scrub Pad. Pre-sweep Area to be Cleaned. Attach New 3M Easy Trap Strip.
	Damaged or Worn Squeegee Blade	Rotate or Replace Squeegee Blade.

**Notes:**

---

# **OPTIONS INSTALLATION**

## ***Options Installation***

---

### **Front Bucket Bracket**

#### **⚠ WARNING:**

This must be installed by qualified personnel. Read all instructions thoroughly. Place machine on level surface.

#### **⚠ AVERTISSEMENT:**

Ce produit doit être installé par du personnel qualifié. Lire soigneusement toutes les instructions. Placer l'appareil sur une surface de niveau

#### **Parts in Kit:**

4 Gal. Bucket

Front Bracket

2x Screw

2x Bushing

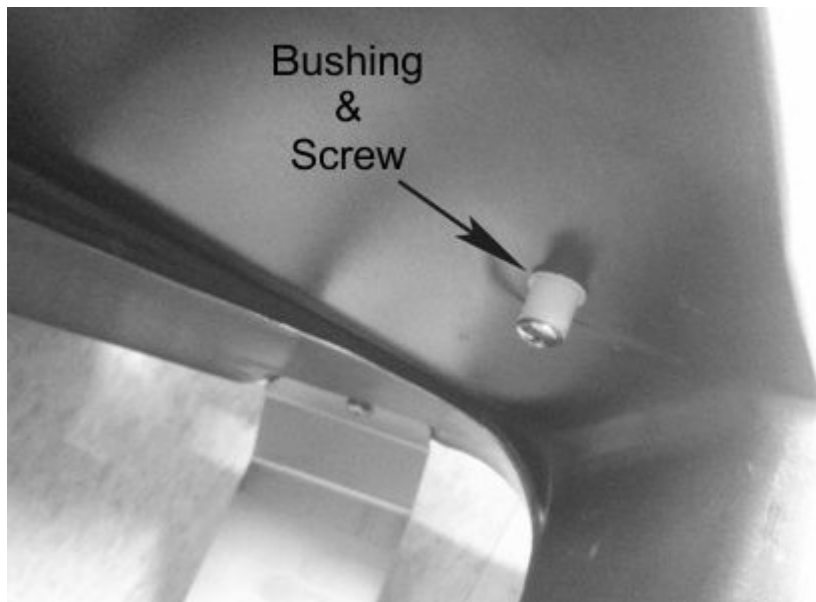
---

#### **Tools Needed:**

- #3 Phillips Screwdriver

- 
1. Remove the screws from both sides of inner walls and discard.
  2. Install bushing and screw provided as shown on each inner wall.

*NOTE: The flange of the plastic bushing is positioned against the tank wall.*



*NOTE: For part numbers, see Models w/ Options section.*

3. Slip each side of the bracket over bushings.



4. Install bucket.



*NOTE: For part numbers, see Models w/ Options section.*

## **Options Installation**

### **Accessory Holder**

#### **⚠ WARNING:**

This must be installed by qualified personnel. Read all instructions thoroughly. Place machine on level surface.

#### **⚠ AVERTISSEMENT:**

Ce produit doit être installé par du personnel qualifié. Lire soigneusement toutes les instructions. Placer l'appareil sur une surface de niveau

#### **Parts in Kit:**

Accessory Holder

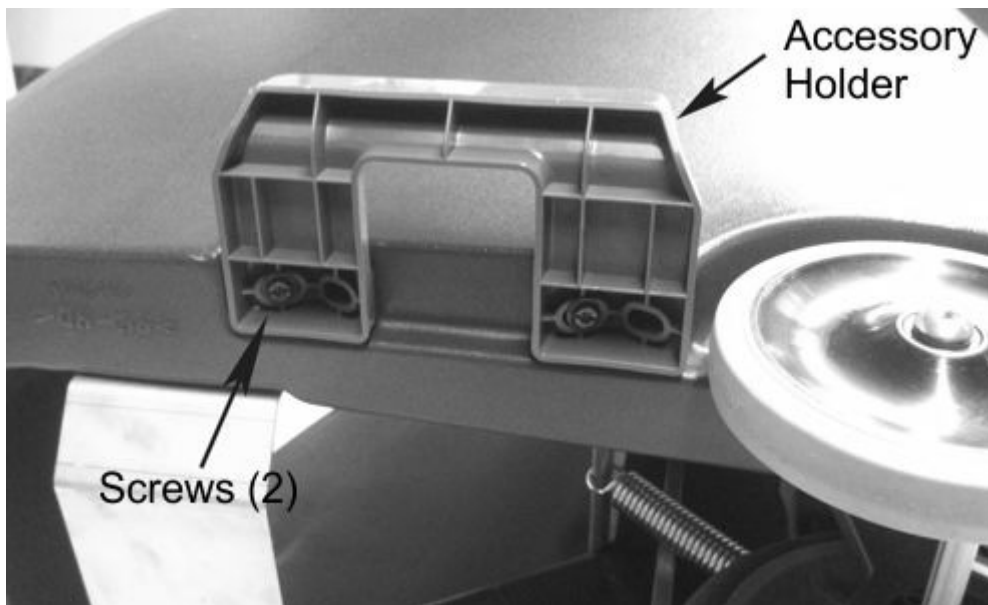
2x Screw

---

#### **Tools Needed:**

- Flathead Screwdriver or T25 Torx Driver
- 

1. Place accessory holder on the bottom of the machine on either side and install with the two screws provided.



*NOTE: For part numbers, see Models w/ Options section.*

### Accessory Hook

#### **⚠ WARNING:**

This must be installed by qualified personnel. Read all instructions thoroughly. Place machine on level surface.

#### **⚠ AVERTISSEMENT:**

Ce produit doit être installé par du personnel qualifié. Lire soigneusement toutes les instructions. Placer l'appareil sur une surface de niveau

#### **Parts in Kit:**

Accessory Hook

Screw

---

#### **Tools Needed**

- Electric Drill
  - #30 Drill Bit
  - Flathead Screwdriver or 1/4" Nut Driver
- 

1. Place flat mop on top of Accessory Holder.
2. Slide Accessory Hook down handle to location as shown.
3. Mark handle and drill pilot hole using #30 Drill Bit.
4. Attach hook with provided Screw.



*NOTE: For part numbers, see Models w/ Options section.*

## **Options Installation**

---

### **Wringer Bracket**

#### **⚠ WARNING:**

This must be installed by qualified personnel. Read all instructions thoroughly. Place machine on level surface.

#### **⚠ AVERTISSEMENT:**

Ce produit doit être installé par du personnel qualifié. Lire soigneusement toutes les instructions. Placer l'appareil sur une surface de niveau

#### **Parts in Kit:**

Wringer Bracket

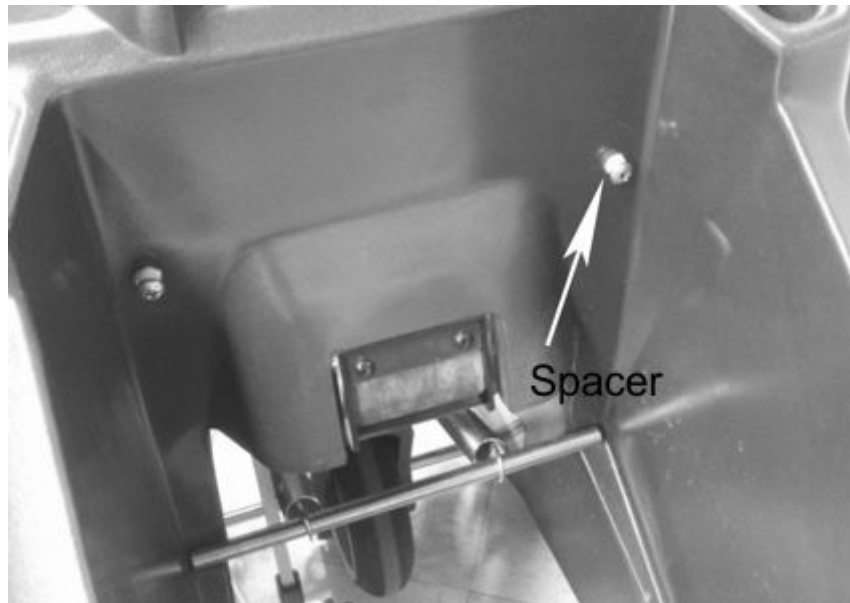
2x Spacer

---

#### **Tools Needed:**

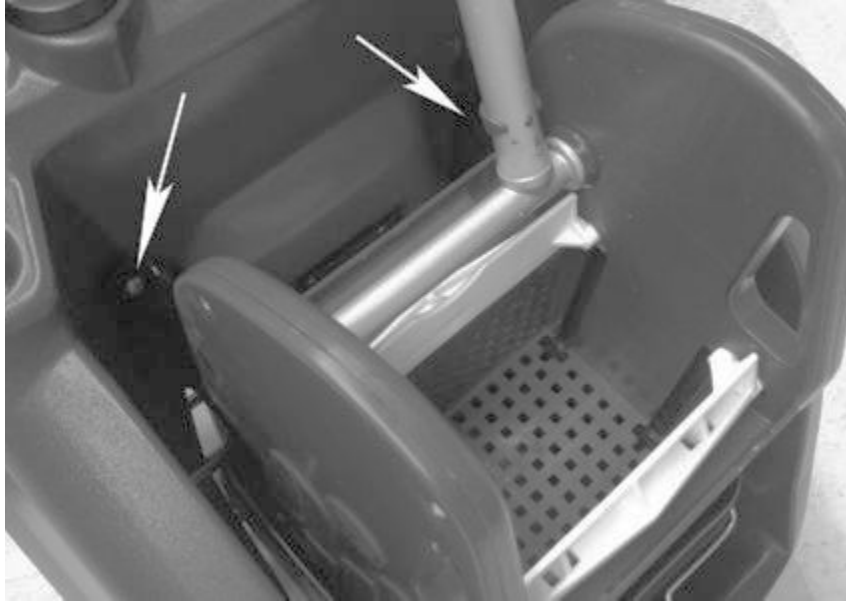
- #3 Phillips Screwdriver
- 

1. Remove screws from back of machine.
2. Add spacer and re-install each screw.



*NOTE: For part numbers, see Models w/ Options section.*

3. Slide wringer assembly over the spacers and push down firmly until it bottoms out.

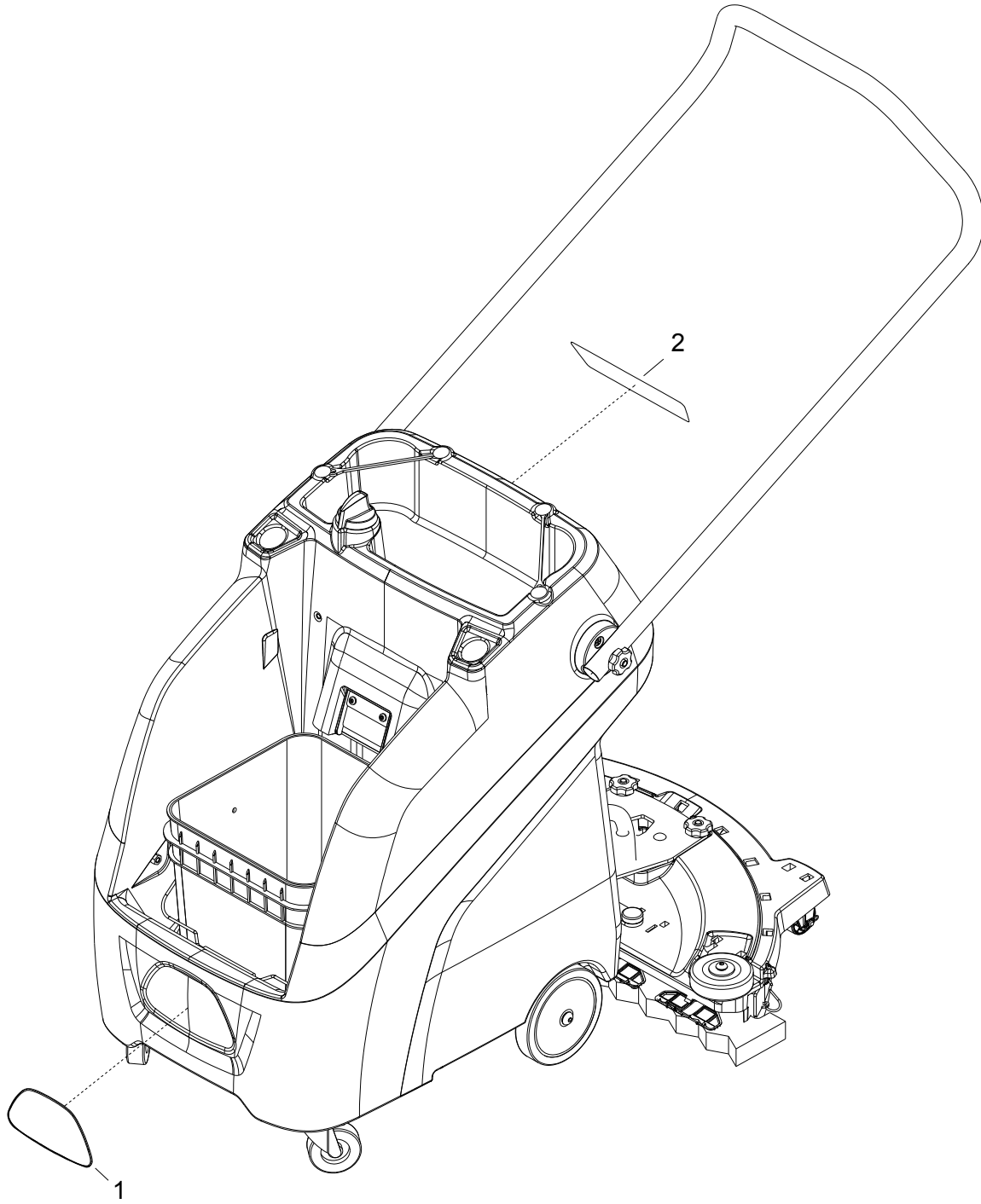


*NOTE: For part numbers, see Models w/ Options section.*

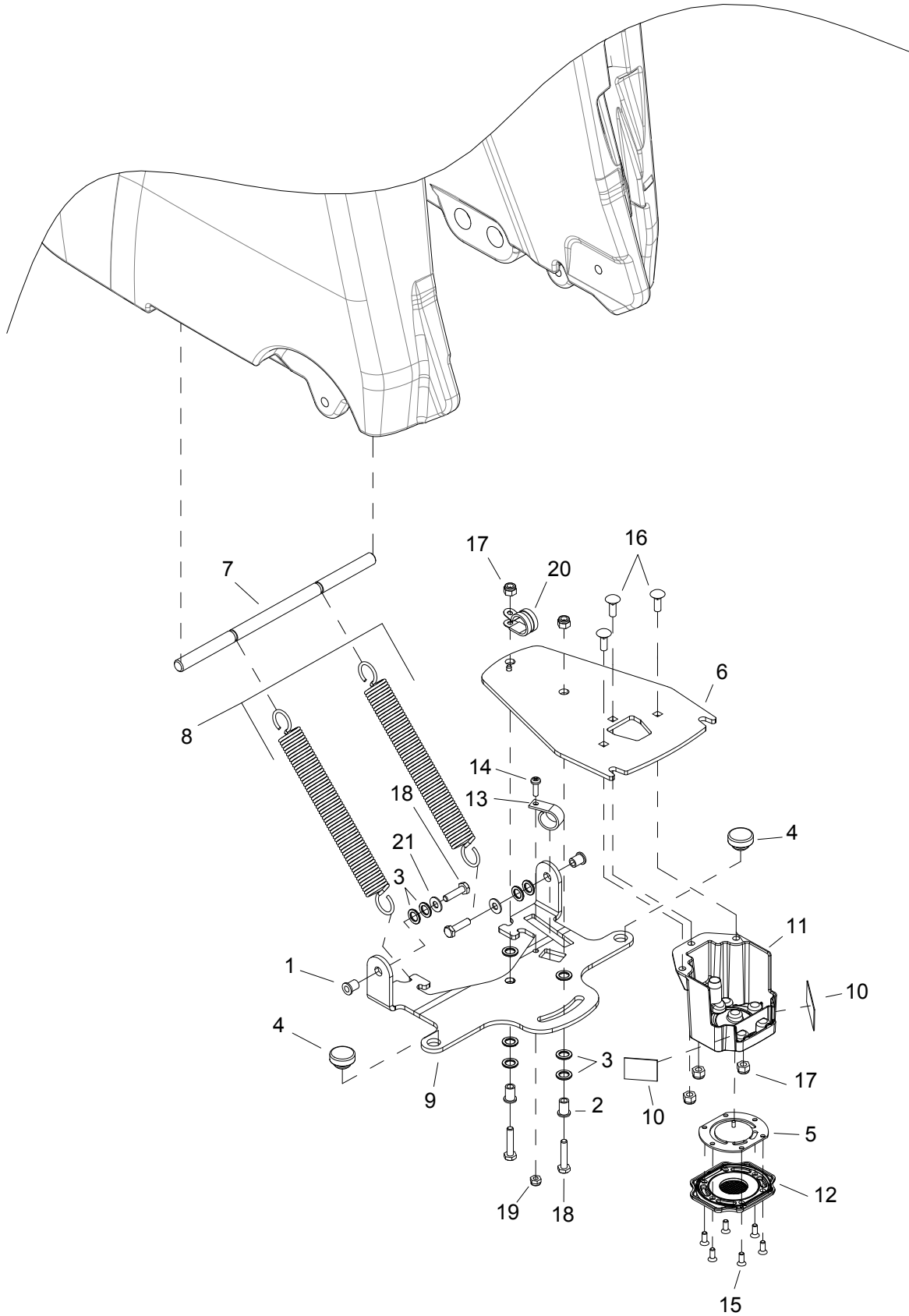
**Notes:**

---

# PARTS



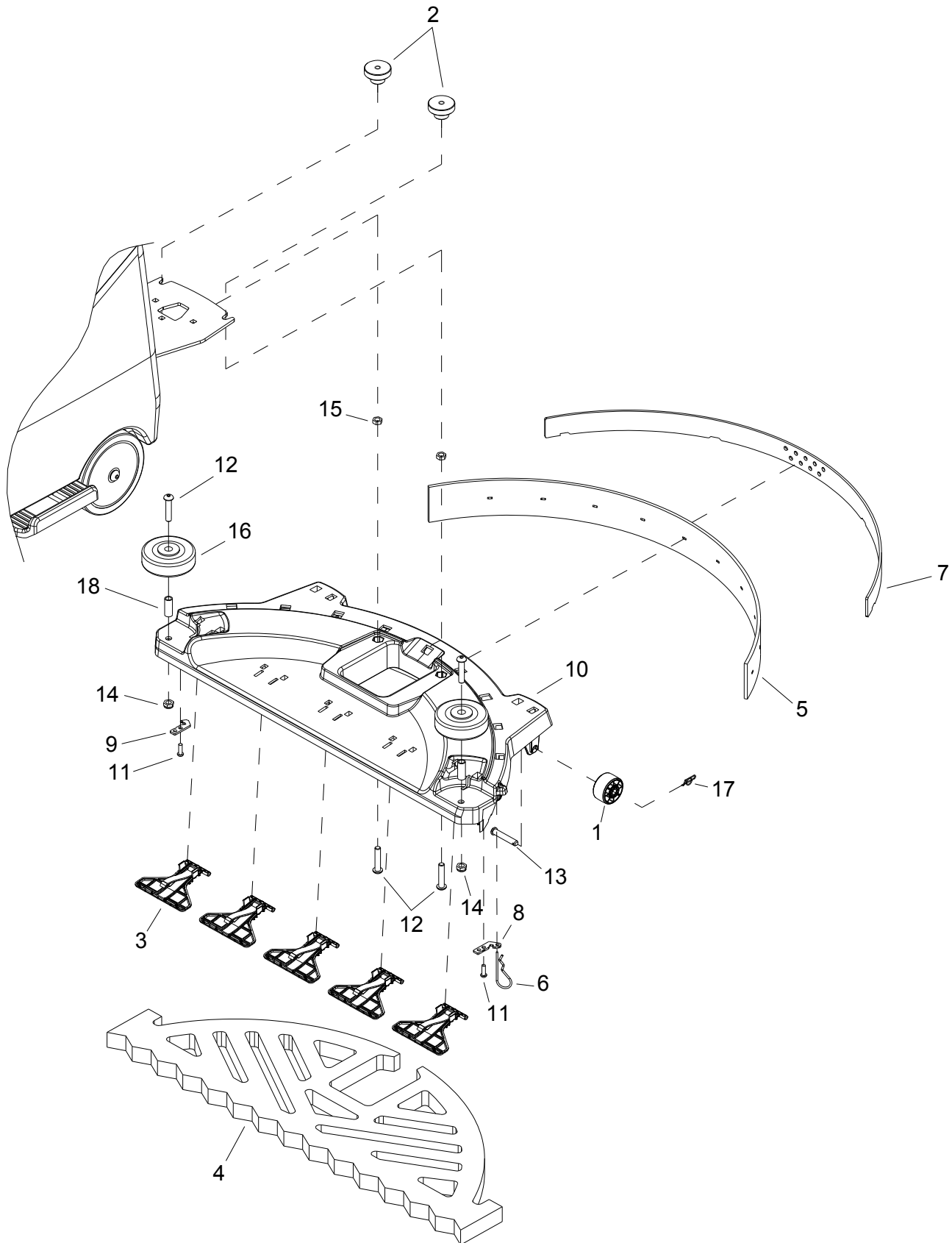
<b>REF</b>	<b>PART NO.</b>	<b>QTY</b>	<b>DESCRIPTION</b>	<b>SERIAL NO. FROM</b>	<b>NOTES</b>
1	86004970	1	LABEL, WINDSOR LOGO DOMED		
2	86376090	1	LABEL, CRICKET		



REF	PART NO.	QTY	DESCRIPTION	SERIAL NO. FROM	NOTES
1	86379170	2	BUSHING, .250 X .375 X .500 BRZ		
2	86375850	2	BUSHING, .250 X .375 X .625 BRZ		
3	86375840	10	WASHER, 3/8 X .625 X .063 THR		
4	86375830	2	BUMPER, RUBBER 1.00" DIA		
5	86375660	1	CHECK VALVE		
6	86375560	1	BRKT, SQUEEGEE LINK		
7	86375450	1	BAR, SPRING ATTACH		
8	86395030	1	KIT, SPRING, EXT	1*	SPRINGS (2)
9	86375320	1	BRKT, SQUEEGEE LINK		
10	86375020	2	VELCRO, HOOK, 1 X 1.20		
11	86374410	1	BLOCK, SUCTION		
12	86374400	1	GRATE, SUCTION		
13	86354990	1	CLAMP, .75 DIA, FLEX LOOP, NYLON		
14	86275470	1	SCREW, 10-32 X .625 PHPFLHMS SS		
15	86275280	6	SCREW, 10-32 X .5 PHFLHMS SS		
16	86274180	3	SCREW, 1/4-20 X 3/4 CARRIAGE		
17	86271870	5	NUT, 1/4-20 HEXTHIN NYLOCK SS		
18	86273810	4	SCREW, 1/4-20 X 1. HHCS SS		
19	86270990	1	NUT, 10-32 HEX NYLOCK SS		
20	86233390	1	CLAMP, 7/8 DIA "P~CUSHIONED		
21	86010630	2	WASHER, 1/4 X .625 FLT SS		

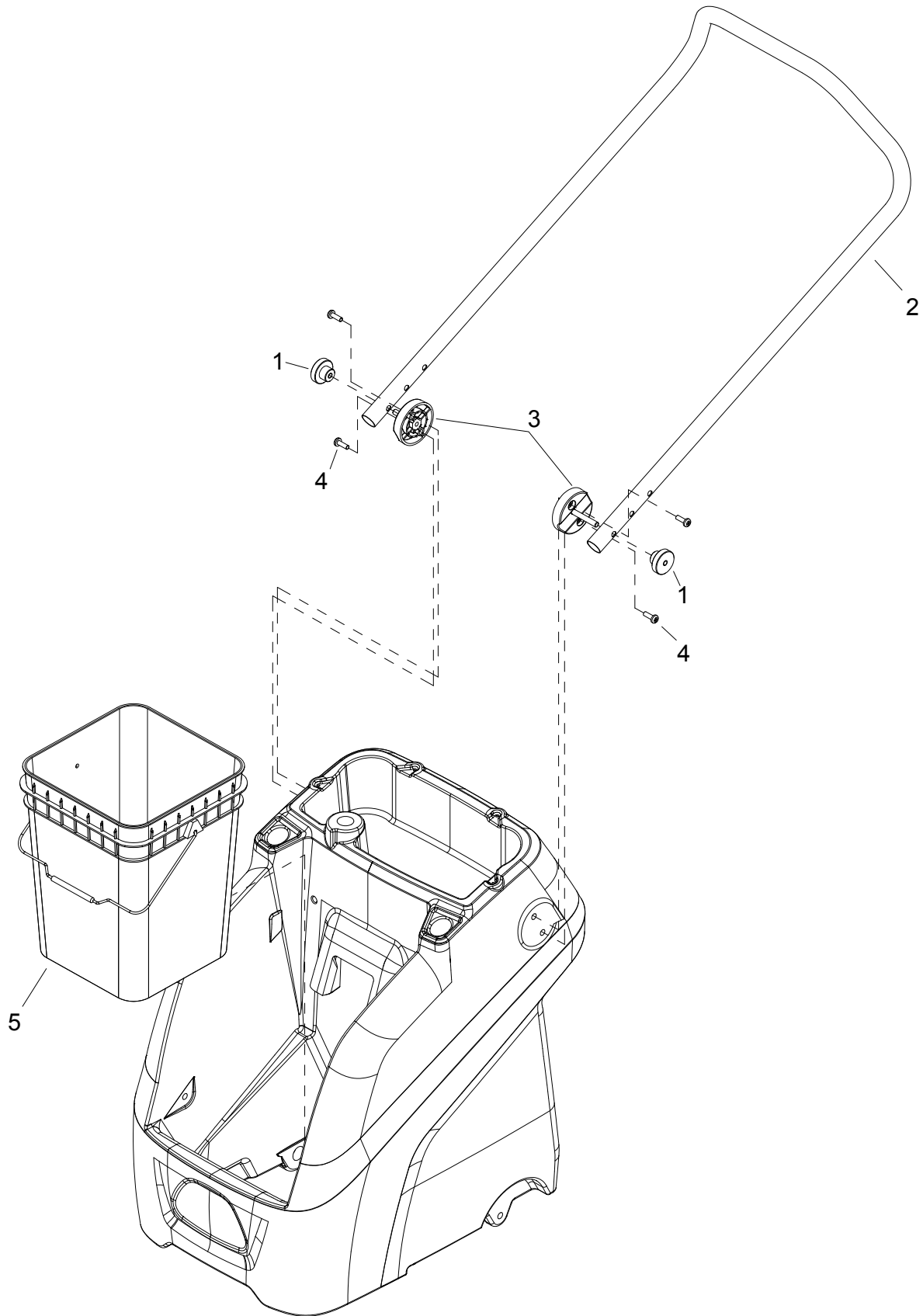
\*See Serial Number Page.

# Deck - Squeegee



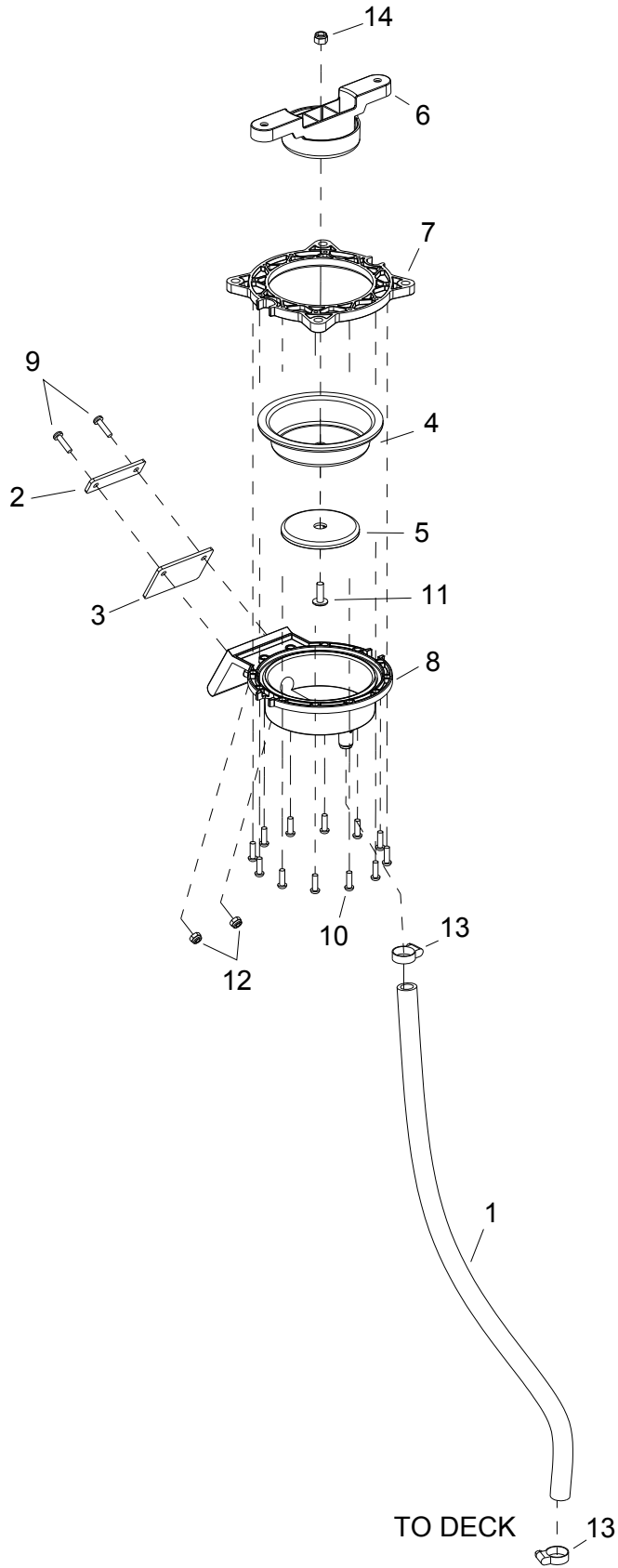
REF	PART NO.	QTY	DESCRIPTION	SERIAL NO. FROM	NOTES
1	86377990	2	WHEEL, 1.61 OD X .313 ID X 1.00 W		
2	86219690	2	KNOB, 1.5 OD X 5/16-18		
3	86377810	5	ASM, FLIPPER		
4	86375910	1	PAD, SCRUB		
5	86375900	1	SQUEEGEE, 2-3/8 X 31.4" L X 3/16 THICK		
-	86379450	1	SQG, 2-3/8 X 31.12" L X 3/16 THK, URE		OPTION
6	86375650	1	PIN, HITCH 3/32 X 2.31 SS		
7	86374880	1	STRIP, LATCH		
8	86374620	1	PLATE, SQUEEGEE RETAINER		
9	86374610	1	PLATE, SQUEEGEE HOOK		
10	86374390	1	DECK, SQUEEGEE		
11	86327510	2	SCREW, KA50 X 16 PT PHPNHTF SS WN1412		
12	86277400	4	SCREW, 5/16-18 X 1.75 SCHBTNHCS SS		
13	86272670	2	PIN, CLEVIS 5/16 X 1.75 STL ZNPLT		
14	86271840	2	NUT, 5/16-18 HEXTHIN NYLOCK SS		
15	86222300	2	NUT, 5/16-18 HEXTHIN SS		
16	86011020	2	WHEEL, 3" DIA. CUSHION RUBBER		
17	86008660	2	COTTER, 5/16 RING		
18	86001350	2	BUSHING, SPANNER .435 X 1.10		

## Handle and Bucket



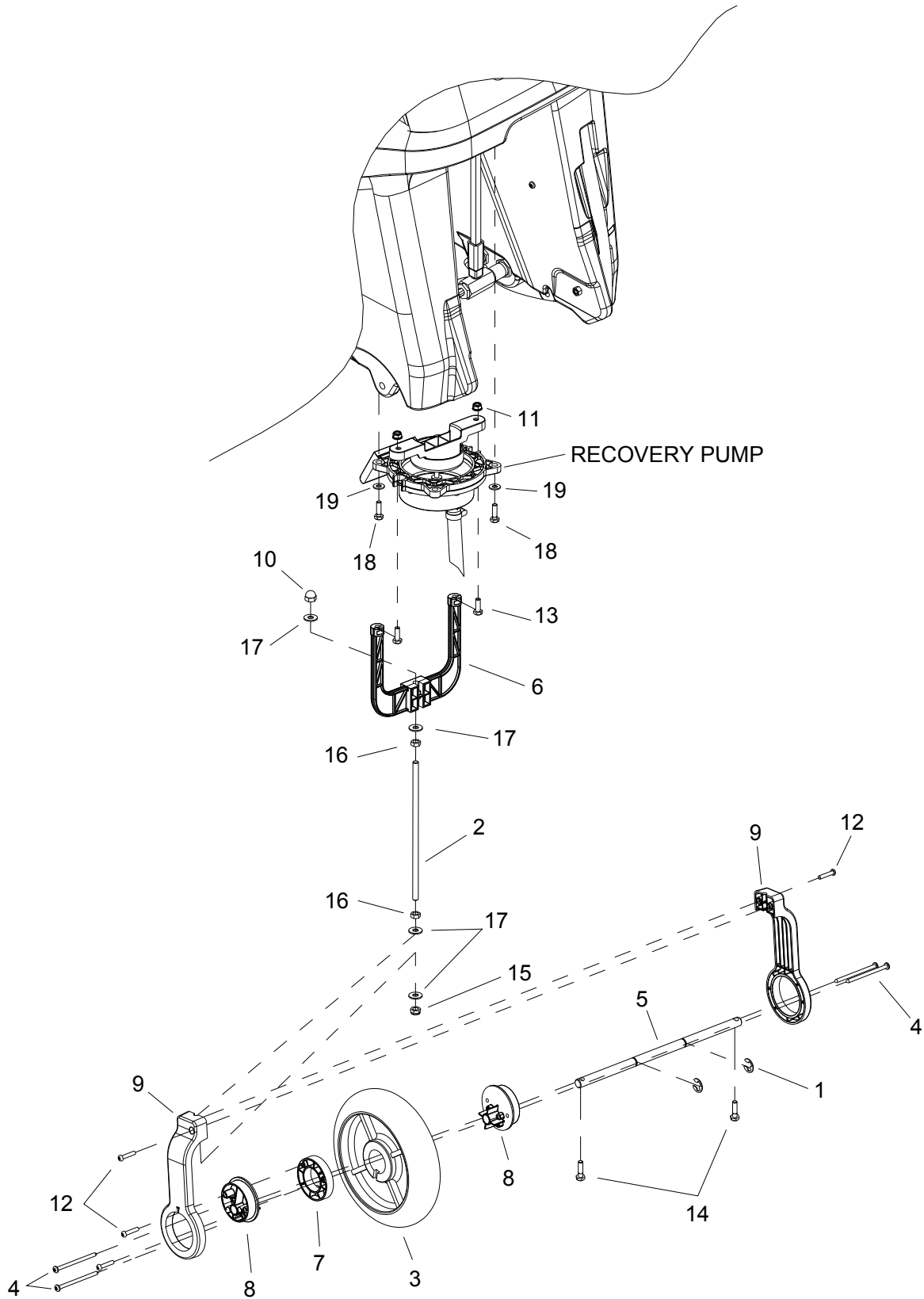
<b>REF</b>	<b>PART NO.</b>	<b>QTY</b>	<b>DESCRIPTION</b>	<b>SERIAL NO. FROM</b>	<b>NOTES</b>
1	86219690	2	KNOB, 1.5 OD X 5/16-18		
2	86373110	1	HANDLE, BLACK, SCRUBBER		
3	86374560	2	PIVOT, HANDLE		
4	86276100	4	SCREW, 1/4-20 X .75 PHPNHMS STL BLK ZNPLT		
5	86375360	1	BUCKET, 4 GALLON		

# Recovery - Pump



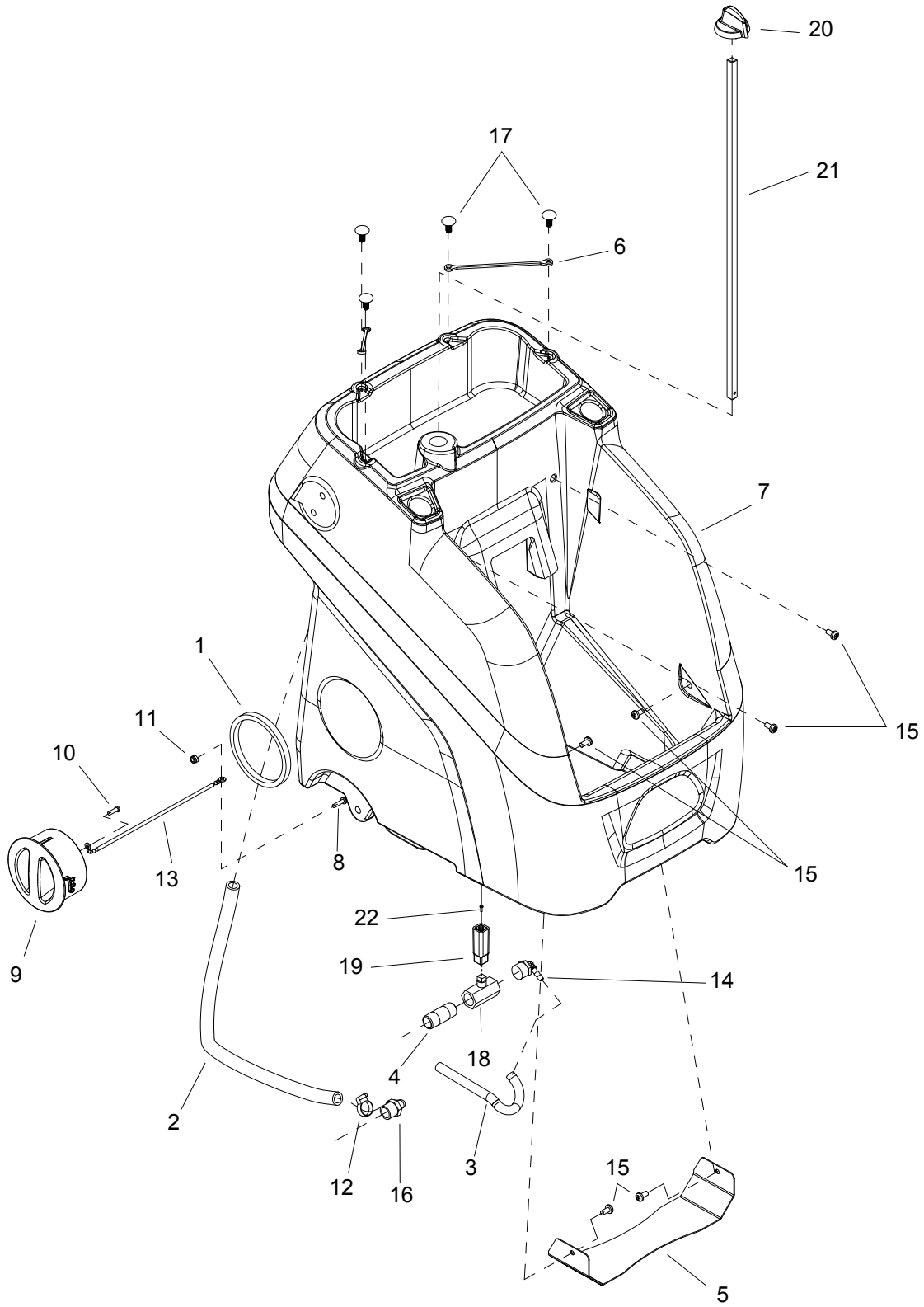
REF	PART NO.	QTY	DESCRIPTION	SERIAL NO. FROM	NOTES
1	86378780	1	HOSE, 1/2ID WIREBOUND X 29"		
2	86375580	1	SHEET, CHECK VALVE 4"		
3	86375570	1	RETAINER, CHECK VALVE		
4	86375420	1	DIAPHRAGM, 4.75" DIA		
5	86375410	1	CLAMP, LOWER DIAPHRAGM		
6	86374490	1	CLAMP, UPPER DIAPHRAGM		
7	86374480	1	RING, CLAMP		
8	86374470	1	HOUSING, PUMP		
9	86371410	2	SCREW, 10-32 X .75 TMS SS BLK		
10	86327510	12	SCREW, KA50 X 16 PT PHPNHTF SS WN1412		
11	86277640	1	SCREW, 1/4-20 X .75 PHTRHMS SS		
12	86270990	2	NUT, 10-32 HEX NYLOCK SS		
13	86233150	2	CLAMP, 3/8 WORM GEAR		
14	86005810	1	NUT, 1/4-20 HEX NYLOCK SS		

# Recovery - Wheel & Pump Mounting



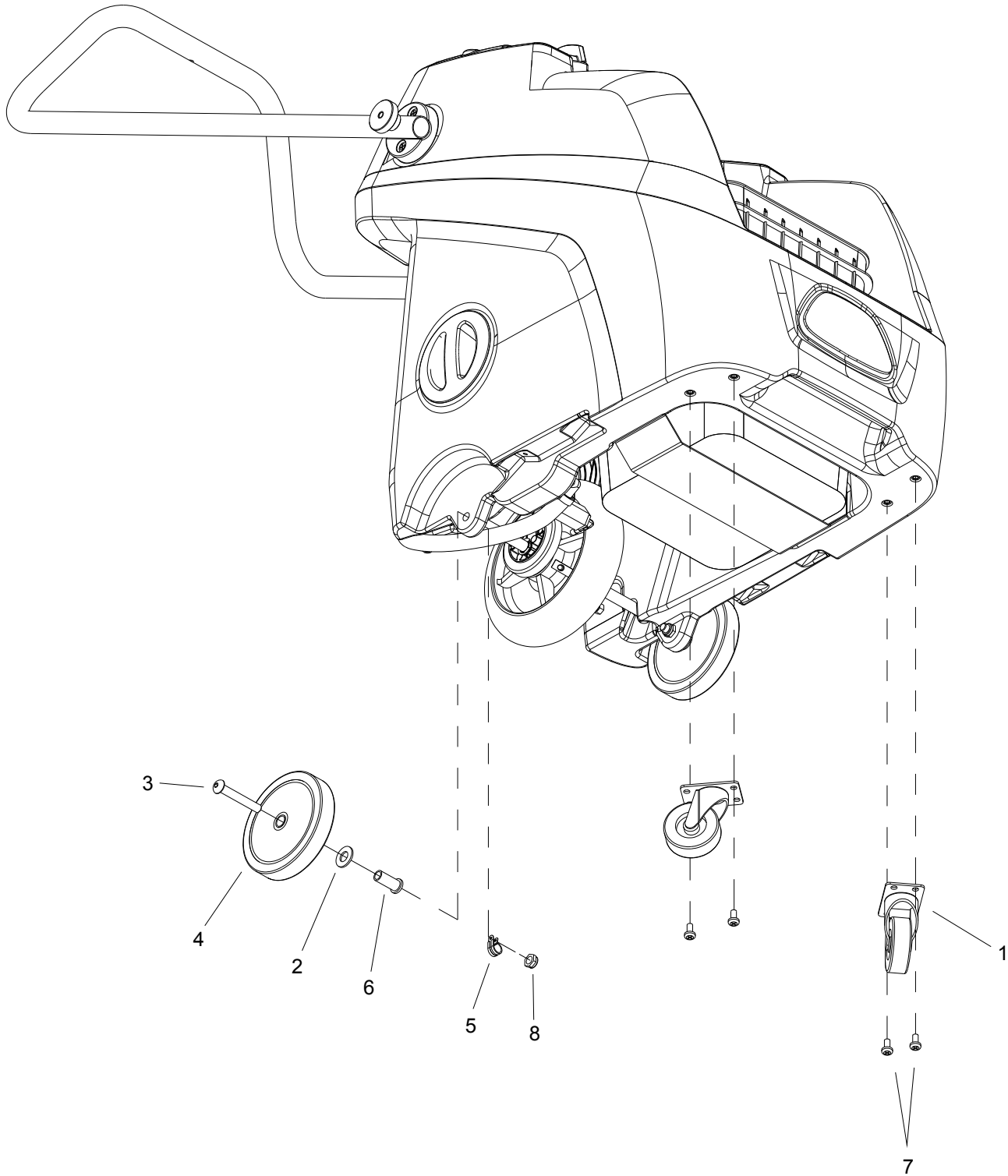
**Recovery - Wheel & Pump Mounting**

REF	PART NO.	QTY	DESCRIPTION	SERIAL NO. FROM	NOTES
1	86376060	2	RING, 1/2" SS E RETAINING		
2	86375430	1	ROD, CONNECTION		
3	86375380	1	WHEEL, 8OD X 2 X 1.38ID PERFORMA		
4	86375350	4	SCREW, 10-12 X 3.0 PHPNHSMS		
5	86375340	1	AXLE, .5" DIA X 11.9"		
6	86374500	1	YOKE, PUMP		
7	86374450	1	HUB, WHEEL		
8	86374440	2	ECCENTRIC		
9	86374430	2	YOKE, WHEEL		
10	86372040	1	NUT, 5/16-18 HEX ACORN, SS		
11	86360310	2	NUT, 1/4-20 FLG SS NYL		
12	86327910	4	SCREW, KS50 X 25 PT PHPNHTF WN412 ZNPLT		
13	86274750	2	SCREW, 1/4-20 X .75 HHCS STL GR5 ZNPLT		
14	86273810	2	SCREW, 1/4-20 X 1 HHCS SS		
15	86271840	1	NUT, 5/16-18 HEXTHIN NYLOCK SS		
16	86222300	2	NUT, 5/16-18 HEXTHIN SS		
17	86010670	4	WASHER, 5/16 X .75 X .04 FLT SS		
18	86274880	2	SCREW, 1/4-20 X .875 HHCS STL GR5 ZNPLT		
19	86010630	2	WASHER, 1/4 X .625 FLT SS		



REF	PART NO.	QTY	DESCRIPTION	SERIAL NO. FROM	NOTES
1	86378380	1	GASKET, SOLUTION FILL		
2	86376010	1	HOSE, 1/2ID 11/16OD X 23" CLR		
3	86282220	1	HOSE, 1/4ID NYLOBRD X 19"		
4	86375870	1	NIPPLE, 1/2NPT X 2LG		
5	86375630	1	BRKT, RECOVERY		
6	86379340	2	STRAP, RETAINING		
7	86373860	1	TANK, BLUE, CKTA24		
8	86371410	1	SCREW, 10-32 X .75 TMS SS BLK		
9	86358680	1	CAP, CLEAN WATER		
10	86327510	1	SCREW, KA50 X 16 PT PHPNHTF SS WN1412		
11	86270990	1	NUT, 10-32 HEX NYLOCK SS		
12	86233150	1	CLAMP, 3/8 WORK GEAR		
13	86232790	1	CHAIN ASM, #10 BEAD S/S W/EYES		
14	86390570	1	HSBRB, 1/2MPT X 1/4HOSE 90 NYL		
15	86006580	6	SCREW, 1/4-20 X .58 PHPNHMS SS NP		
16	86001530	1	1/2 NPT X 1/2 HOSE 90		
17	86379330	4	CLIP, X-MAS TREE, BLACK		
18	64130990	1	BALL VALVE		
19	50354590	1	COUPLER PIECE BALL VALVE		
20	50354040	1	HANDLE		
21	50353690	1	BAR		
22	86275370	1	SCREW, 10-24 X .5 FLHTC		

# Wheels

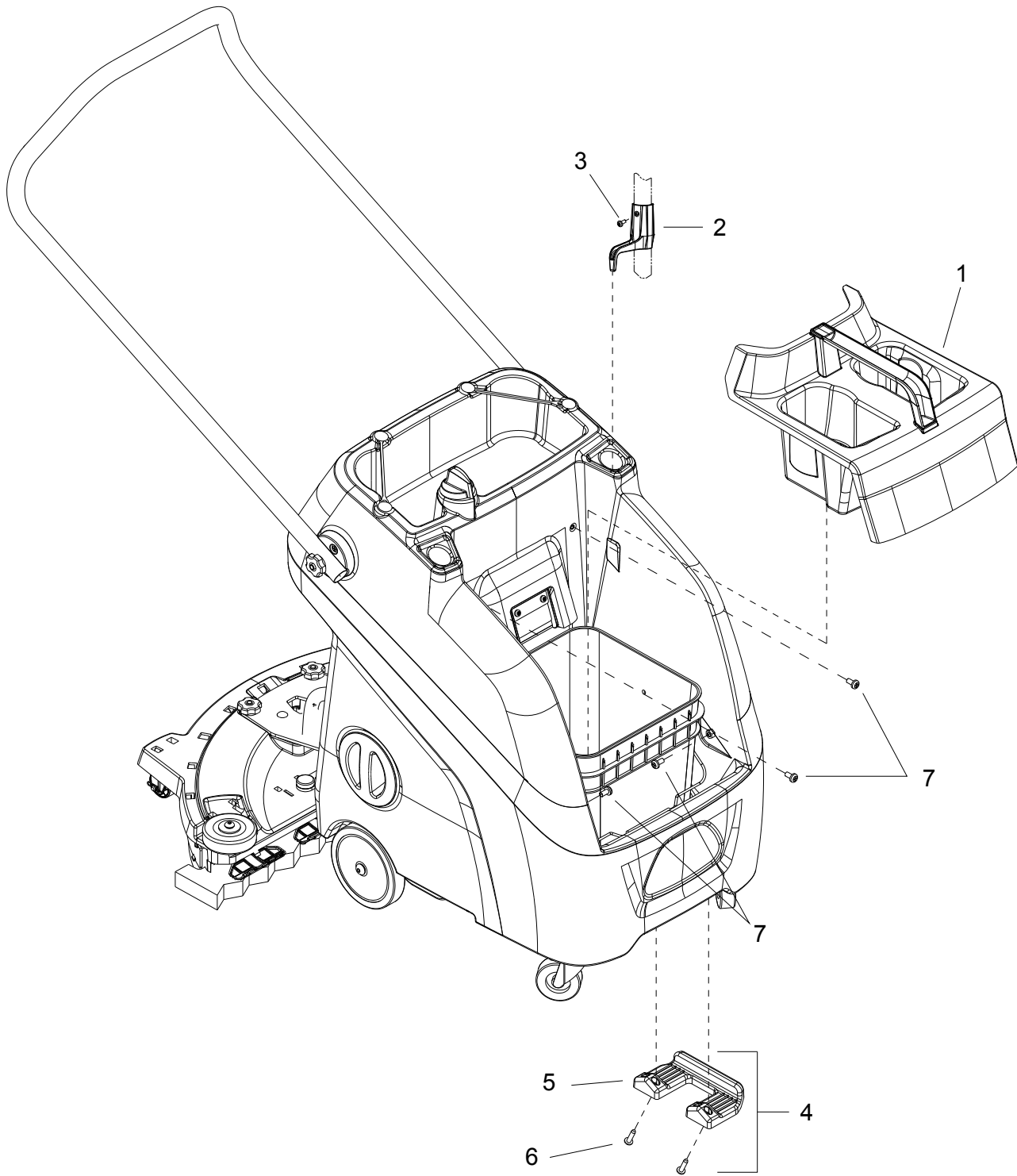


REF	PART NO.	QTY	DESCRIPTION	SERIAL NO. FROM	NOTES
1	86375640	2	CASTER, SWIVEL, 2.5 IN		
2	86279380	2	WASHER, 1/2 X 1 X .08 NYL		
3	86277440	2	SCREW, 3/8-16 X 2.5 SCHBTNHCS SS		
4	86259770	2	WHEEL, 5D X 1 X .51D GRY		
5	86233410	1	CLAMP, 3/4 DIA CUSHION .406 DIA		
6	86228910	2	BUSHING, .377 X .502 X 1.25 FLG BRZ		
7	86006580	4	SCREW, 1/4-20 X .58 PHPNHMS SS NP		
8	86005630	2	NUT, 3/8-16 HEXTHIN NYLOCK SS		

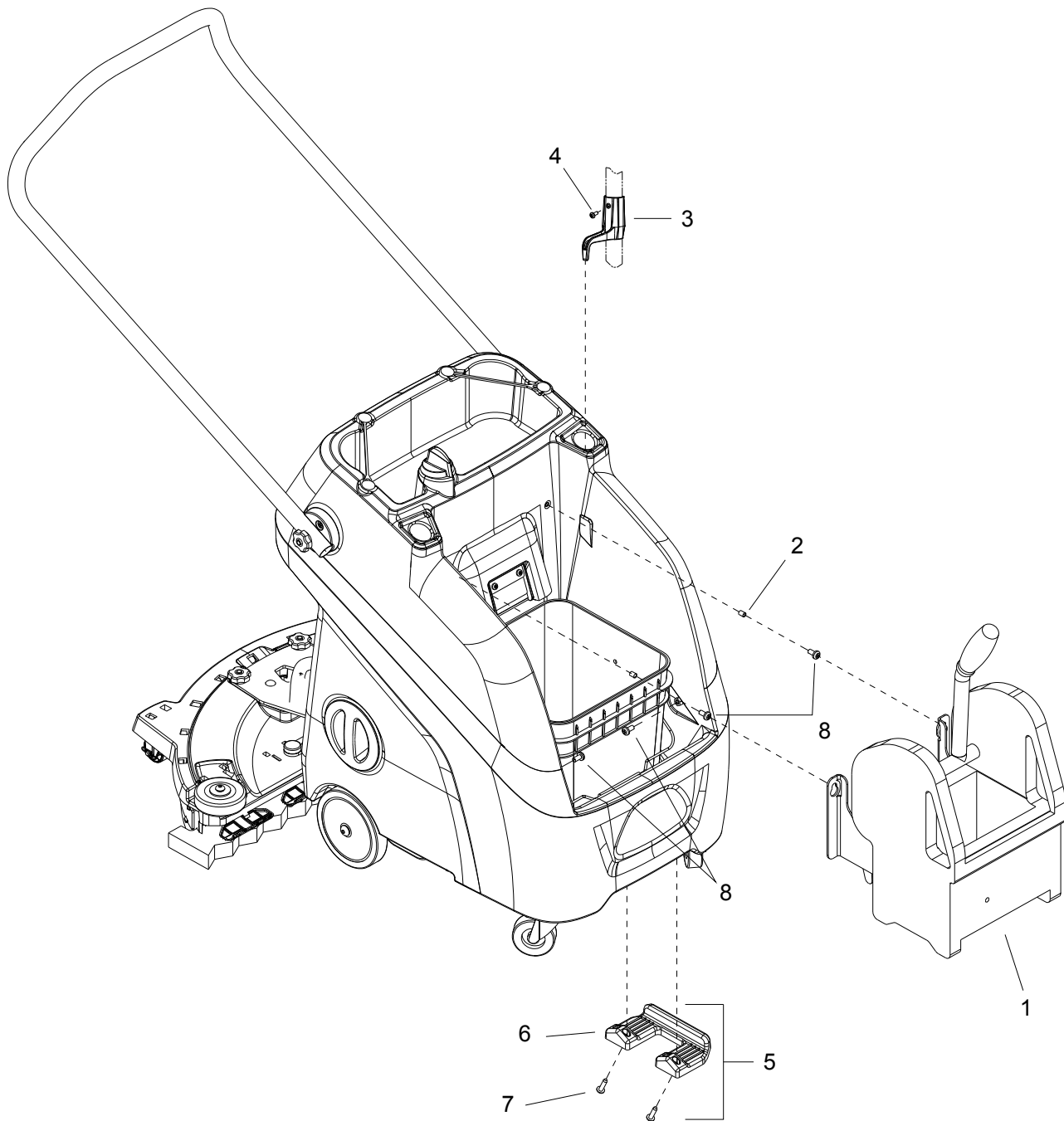
**Notes:**

---

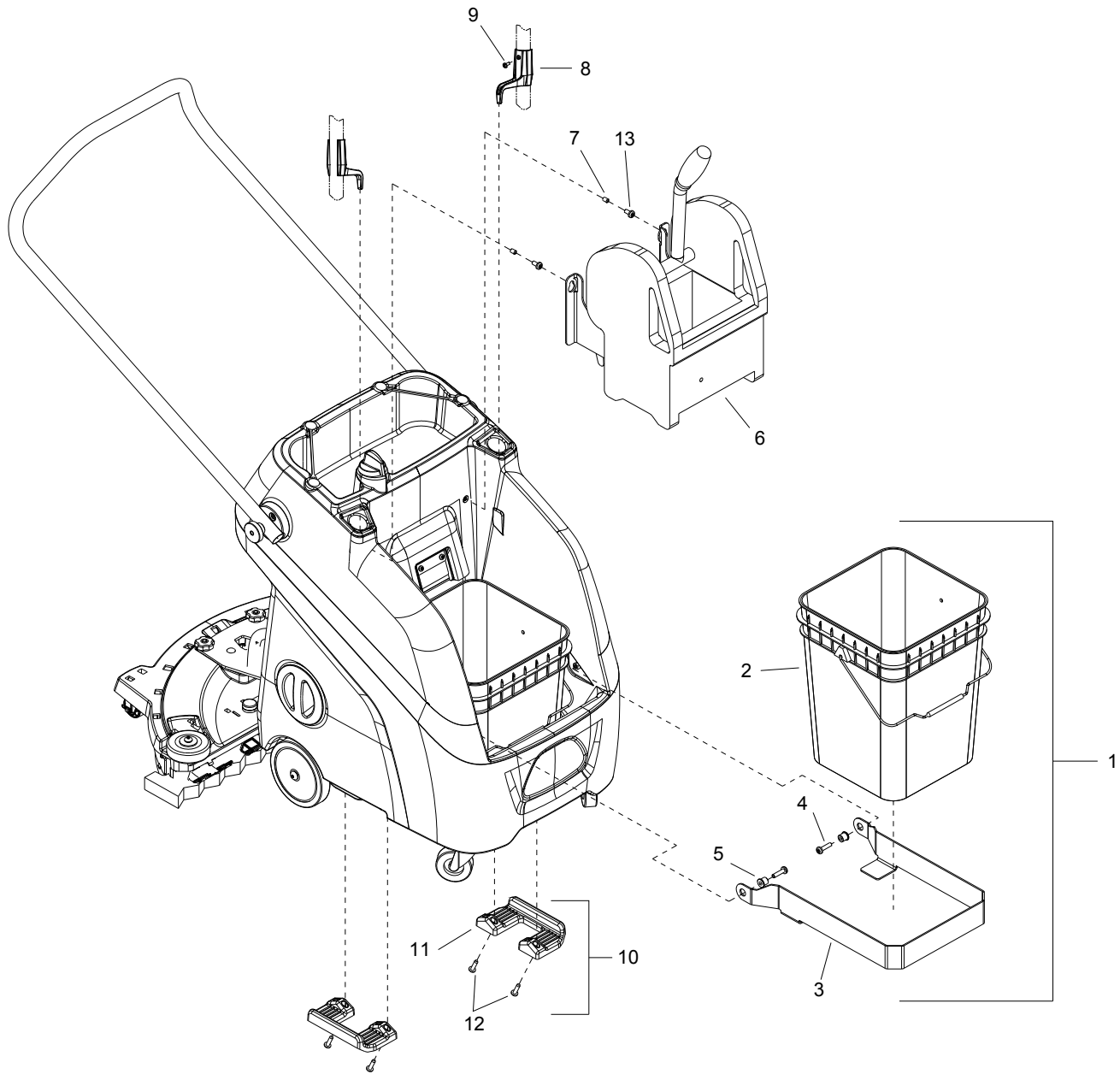
# MODELS WITH OPTIONS



REF	PART NO.	QTY	DESCRIPTION	SERIAL NO. FROM	NOTES
-	86379490	-	KIT, HYGIENE ACC, AUTOMOP		INCLUDES ITEMS 1 THROUGH 7
1	86375670	1	ASSY, UTILITY TRAY		
2	86375400	1	HOOK, ACCESSORY		
3	86006500	1	SCREW, 8-15 X .5 SLTDHWHSMS TYPEA SS		
4	86379460	1	KIT, ACC HOLDER		
5	86374380	1	ACCESSORY HOLDER		
6	73031130	2	SCREW 6X25 -10.9-R2R (IN6RD)		
7	86006580	4	SCREW 1/4-20 X 1/2 PPHMS SS DL		



REF	PART NO.	QTY	DESCRIPTION	SERIAL NO. FROM	NOTES
-	86379500	-	KIT, PRODUCTIVITY ACC, AUTOMOP		INCLUDES ITEMS 1 THROUGH 8
1	86379290	1	KIT, WRINGER BRKT		INCLUDES 2
2	86379390	2	SPACER, .225X.375X.187 NYL BLK		
3	86375400	1	HOOK, ACCESSORY		
4	86006500	1	SCREW, 8-15 X .5 SLTDHWSMS TYPEA SS		
5	86379460	1	KIT, ACC HOLDER		
6	86374380	1	ACCESSORY HOLDER		
7	73031130	2	SCREW 6X25 -10.9-R2R (IN6RD)		
8	86006580	4	SCREW 1/4-20 X 1/2 PPHMS SS DL		



REF	PART NO.	QTY	DESCRIPTION	SERIAL NO. FROM	NOTES
-	86379510	-	KIT, DETAIL ACC, AUTOMOP		INCLUDES ITEMS 1 THROUGH 13
1	86379480	1	KIT, FRONT BUCKET		
2	86375360	1	BUCKET, 4 GALLON		
3	86378420	1	BRKT, BUCKET MOUNT, FRONT		
4	86006530	2	SCREW 1/4-20 X 1 PPHMS SS		
5	86379400	2	BUSHING,.255X.505X.500 FLG BLK		
6	86379290	1	KIT, WRINGER BRKT		INCLUDES 7
7	86379390	2	SPACER, .225X.375X.187 NYL BLK		
8	86375400	2	HOOK, ACCESSORY		
9	86006500	2	SCREW, 8-15 X .5 SLTDHWHSMS TYPEA SS		
10	86379460	2	KIT, ACC HOLDER		
11	86374380	2	ACCESSORY HOLDER		
12	73031130	4	SCREW 6X25 -10.9-R2R (IN6RD)		
13	86006580	2	SCREW 1/4-20 X 1/2 PPHMS SS DL		

## **Suggested Spare Parts**

---

<b>PART NO.</b>	<b>DESCRIPTION</b>	<b>SERIAL NO. FROM</b>	<b>NOTES</b>
86375920	3M EASY TRAP BULK ROLL		
86375400	HOOK, ACCESSORY		
86379450	SQG, 2-3/8 X 31.12" L X 3/16 THK, URE		
86377810	ASM, FLIPPER		
86374400	GRATE, SUCTION		
86375660	CHECK VALVE		
86375580	SHEET, CHECK VALVE		
86219690	KNOB, 1.5 OD X 5/16-18		
86375650	PIN, HITCH 3/32 X 2.31 SS		
86379440	PAD, AUTOMOP, WHITE, PKG OF 5		
86260690	HOSE ASM, FCT ADPTR X 60"		

**Serial Numbers**

REF. NO.	MODEL: SERIAL #
1	N/A