



Electronic Service Manuals

This electronic document is provided as a service to our customers. We do not create the contents of the information contained in this document. Should you have detailed questions pertaining to the information contained in this document, you may contact Michco, or the manufacturer which provided the original information in this electronic deliverable. Michco's only part in this electronic deliverable was the electronic assembly process. By providing this manual on line we are not guaranteeing parts availability.

You may contact Michco through the following methods:

Phone (517) 484-9312 or (800) 331-3339

2011 N. High St. -- Lansing, Michigan -- 48906

Fax: (517) 484-9836

Email: CustServe@Michco.com

Web site: www.Michco.Com

Parts Web site: www.FloorMachineParts.Com

Order Parts on Line at:

www.FloorMachineParts.Com

Directly to Parts & Service:

By Email: **Shop@Michco.com**

By Fax: (517) 702-2041

By Voice: Use numbers above.

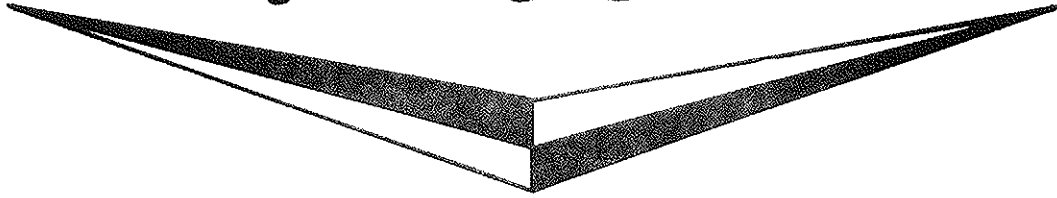
Serving the Cleaning Industry Since 1922

Notice: All copyrighted material remains property of original owners, all trademarks are property of respective owners. Manuals are subject to Manufacturer's reproduction limitations. Originals or reproductions were provided by manufacturers through a request. We make no warranty as to the correctness of information provided in this document and you assume all risk. By placing these manuals on line we are not declaring our corporation to be an manufacturer authorized dealer or provider, please check our web site for authorized manufacturers we represent.

OWNER'S GUIDE



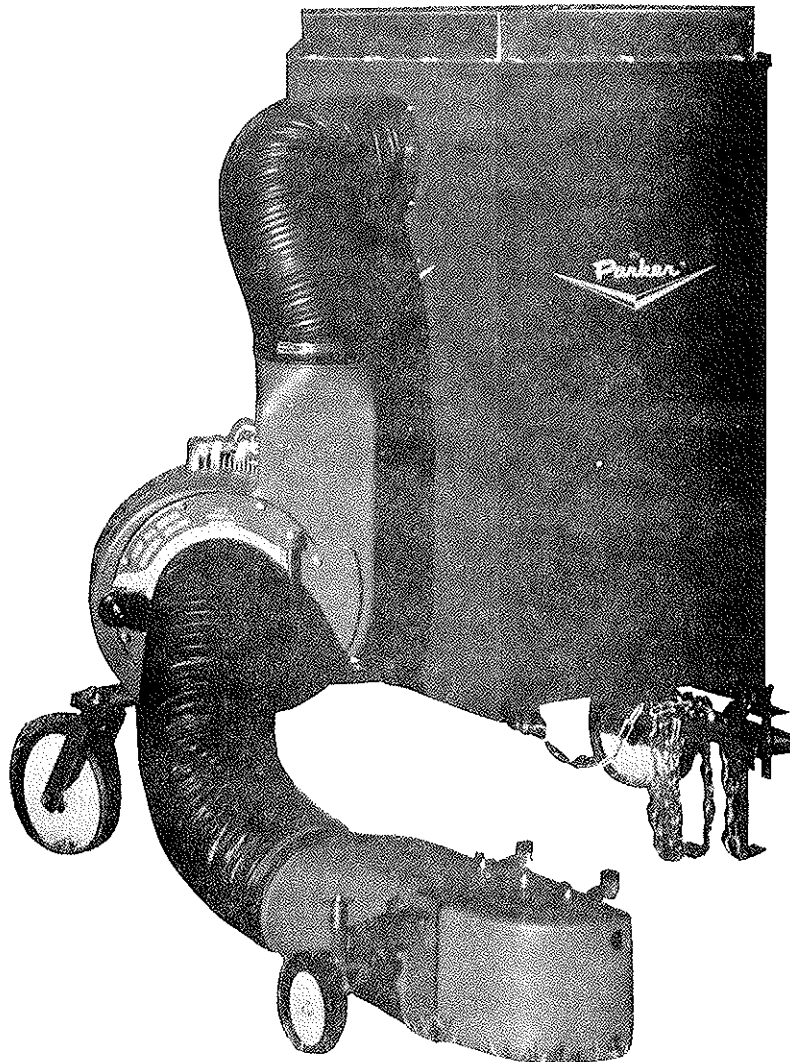
Parker®



TRAIL BLAZER™ VAC

PATENT PENDING

MODEL TV-8514



PARKER SWEEPER COMPANY

Box 1728

Springfield, Ohio 45501-1728

Plate No. 1071

TO THE OWNER

These instructions were written to assist you in the assembly and operation of the Trail Blazer™ Vac. **READ THE INSTRUCTIONS** thoroughly **BEFORE** attempting to assemble and operate the machine so that you are familiar with the complete procedure and the safety precautions.

RULES FOR SAFE OPERATION



The following safety precautions are suggested to prevent damage to the equipment or injury to the operator or nearby persons.

1. Do not allow anyone to operate the Trail Blazer™ Vac without proper instructions.
2. Stop the towing unit engine before reaching into the boot or mower deck to dislodge sticks or other debris.
3. Stop the engine before attempting to make any adjustment or performing any maintenance work on the Trail Blazer™ Vac.
4. When working on the engine, always remove the spark plug wire from the engine and attach it to the V shaped clip on the engine head.
5. Do not run the engine in an enclosed area. Exhaust gases contain carbon monoxide, an odorless and deadly poison.
6. Do not fill the fuel tank while the engine is running. Spilling gasoline on a hot engine may cause a fire or an explosion.
7. While machine is running, do not leave it unattended.
8. Before using the machine to pick up debris, police the area to be cleaned first, picking up any large objects such as cans, toys, dog bones and chunks of wood. If these pass through the machine, they could damage the impeller, bend the engine crankshaft or put a hole in the hose.
9. Avoid using the machine in dangerous places where steep slopes or loose debris will endanger the safety of the operator or other people.
10. Keep all nuts, bolts and screws tight to be sure the Trail Blazer™ Vac is in safe working condition.
11. Do not start or run engine unless hose is properly secured as injury may result.
12. Empty contents from cart and containers promptly. To not do so could cause spontaneous combustion.

IMPORTANT

ALWAYS GIVE THE FOLLOWING INFORMATION WHEN ORDERING REPAIR PARTS:

- | | |
|-------------------------------|-------------------------------|
| 1. Part Number (Not Ref. No.) | 3. Description of Part |
| 2. Quantity Needed | 4. Model No. of Trail Blazer™ |
| | 5. Serial No. if available |

If unable to obtain parts locally, write down above information and send to:
PARKER SWEEPER CO., BOX 1728, SPRINGFIELD, OHIO 45501

Your unit is right hand (R.H.) or left hand (L.H.) as you stand behind it.

OBSERVE ALL SAFETY RULES. YOUR INJURIES MAYBE THE ONES YOU PREVENT.

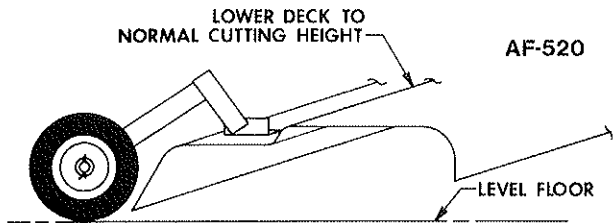
ASSEMBLY INSTRUCTIONS

INSTRUCTIONS FOR PREPARING AND ATTACHING BOOT TO MOWER DECK

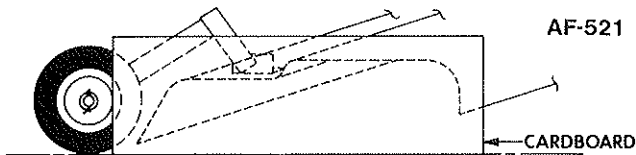
These instructions are designed to be used for right hand mower discharge **only**. A Boot Conversion Kit, MA-575-B is available for left hand mower discharge applications. This kit includes instructions for boot modification, engine mounting, and hose attachment.

NOTE: Remove the discharge extension or shield from the mower deck.

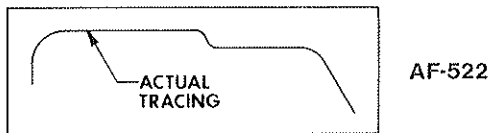
1. Lower mowing deck (on a level floor) to the normal cutting height.



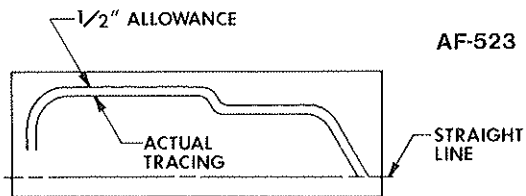
2. Make a template from a flap of the shipping carton. Place the straight edge on the floor so that the cardboard fully covers the discharge area of the mowing deck.



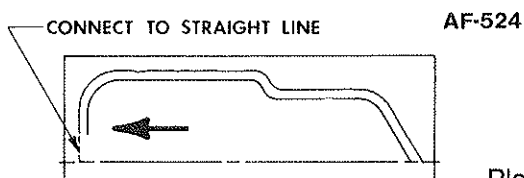
3. Trace the metal outline of the deck on the cardboard.



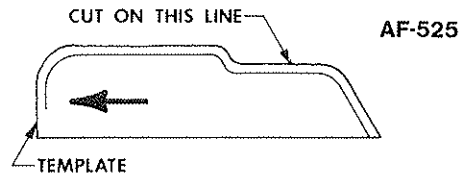
4. The opening in the boot should be approximately 1/2" larger than the deck to allow for proper fit and operation. To accomplish this, retrace the outline 1/2" larger on the cardboard. Draw a line parallel to the bottom straight edge of the cardboard from the lowest point of the deck.



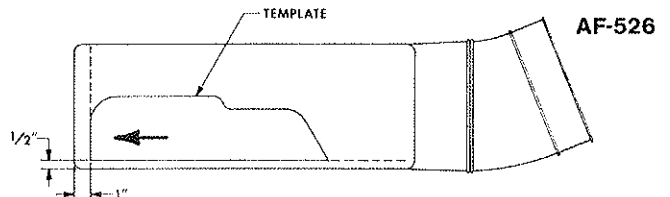
5. Connect the front outline of the deck to the straight line. Place an arrow on the template indicating the front of the deck.



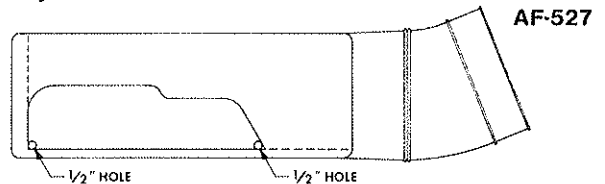
6. Cut out template with a sharp knife.



7. Place the template on the boot, adjusting it so that the template is approximately 1" back from the front edge and 1/2" from the bottom edge. With a black marking pen trace the outline on the boot. Before proceeding further, hold boot against deck opening to be sure that the opening corresponds.

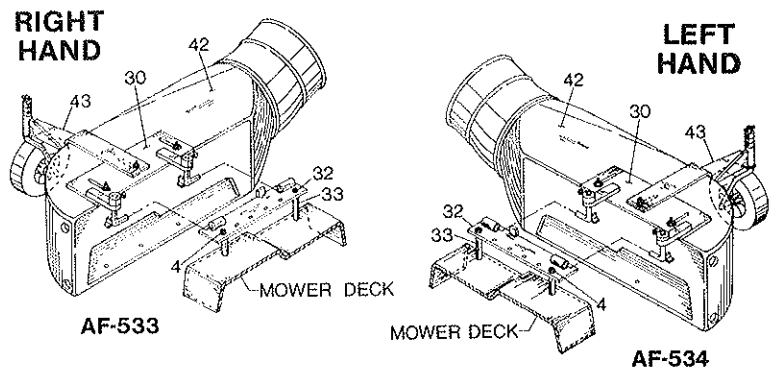


8. If everything is in order, drill a 1/2" hole tangentially at each bottom corner.



9. Use a saber saw with a medium cut blade 1/2" wide to cut the outline of the template from the boot. **NOTE:** This will cause each corner to have a 1/4" radius.

10. Use a file to remove the rough edges.



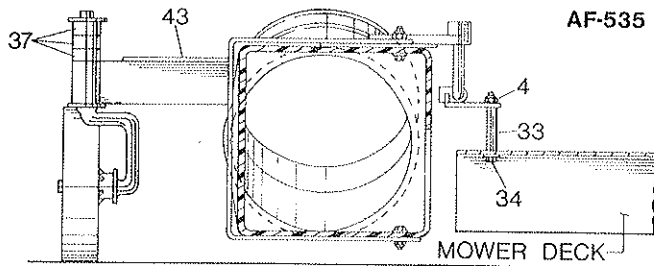
11. Attach hinge assembly (30) by the two outside holes to top of boot (42) using hex head bolts, flatwashers against inside of boot and flatwashers and lock nuts on top of hinge assembly. Do not assemble a bolt in the middle of the hinge assembly.

12. Slide caster wheel assembly (43) over boot and hinge assembly. Secure top and bottom with hardware provided.

NOTE: Hinge assembly (30) should be moved as close to the boot as possible before tightening hardware.

ASSEMBLY INSTRUCTIONS (Continued)

13. Attach deck plate assembly (32) to Hinge Assembly (30).
14. Remove nuts, bolts and spacers from deck plate assembly (32).
15. Position boot (42) flush with end of mower discharge opening and mark location of outside deck plate bolt holes and drill two 5/16 diameter holes thru mower deck.
16. Mount hinge assembly on the top of the mower deck keeping the boot opening concentric with the deck opening. Cut off spacers (33) to fit between hinge assembly (32) and mower deck to keep boot level. This may require spacer (33) to be cut at an angle to match deck contour.
17. Attach hinge assembly to mower deck using full thread hex head bolts (34), spacers (33), and hex lock nuts (4) provided.
18. Excess bolt length should be cut off with hacksaw to permit minimum of two full threads and maximum of 1/4" to protrude thru hex lock nut.
19. Boot can now be adjusted up and down and in and out. For best performance, boot should be positioned 1" to 1 1/2" from end of deck. Adjust caster wheel by positioning spacers (37) to proper height so that bottom edge of boot is parallel to the ground as shown below.

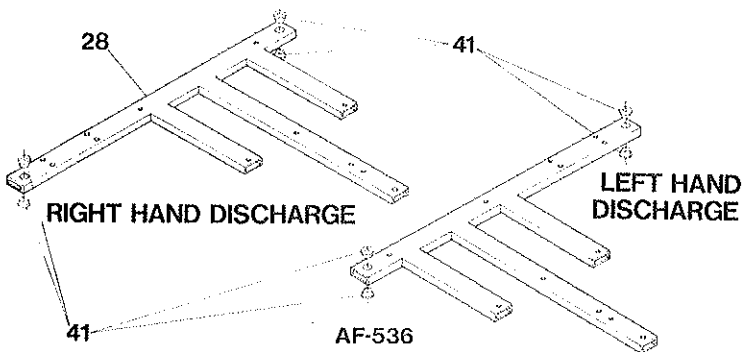


20. Inspect all hardware of boot-to-deck attachment to assure they have been tightened securely.

NOTE: This unit may be used with left hand or right hand discharge mowing systems. These instructions are for right hand discharge units only. Left hand discharge mowers require frame assembly to be reversed as may be noted below.

FRAME ASSEMBLY

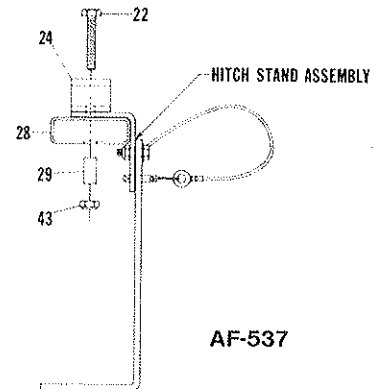
1. Lay frame (28) on floor as shown. (See AF-536)



2. Insert the four bearings (41) into the large holes in the frame (28), one top and one bottom of each hole. **NOTE:** Bearings may have to be pressed into place and must be seated against the frame.
3. Place spacers (46) on stems of wheel assemblies (36) then insert stems of wheel assembly (36) (See AF-542) upward thru bottom and top bearings until frame rests on wheel assembly.
4. Secure wheel assembly (36) by pressing and seating retaining ring (34) into groove on wheel assembly stem. Ring may be pressed into groove with pliers or screwdriver.

NOTE: When first assembling, all bolts should be installed finger tight. Final tightening instructions will follow.

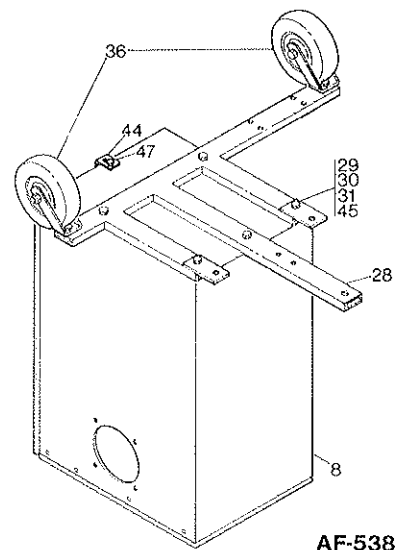
5. Attach hitch stand assembly (See AF-537) and clevis (24) to front of frame (28) with two hex head bolts (22), inserts (29) and hex lock nuts (43). Hitch stand assembly must be mounted on top and to the left side of frame. Clevis mounts to top and flush on hitch stand assembly.



CONTAINER ASSEMBLY

(See AF-538)

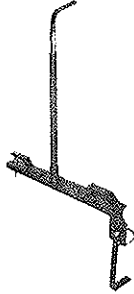
1. Place container (8) on floor with bottom up, as shown (taking care not to damage top of container).



ASSEMBLY INSTRUCTIONS (Continued)

ATTACH TO TRACTOR FOR TRAILING MODE (continued)

This accessory also includes a tongue extension and a hose support arm for supporting the hose.



AF-541

NOTE: In the trailing mode the hose might not have to be shortened. In the rigid mode it will be necessary to shorten it. **DO NOT CUT HOSES UNTIL THE MODE TO BE USED HAS BEEN SELECTED.** Then, after the unit has been used for a short time, if necessary to shorten, use bolt cutters or hacksaw. **DO NOT CUT TOO SHORT.** To determine correct length of boot hose, park the tractor with the Trail Blazer™ in a full left hand turn (right hand turn if mounted for left hand discharge). Hose should not be stretched tightly. If hose is too long when placed in this mode, then cut off as required.

OPERATING INSTRUCTIONS

IMPORTANT

Read the engine manual carefully before operating TRAIL BLAZER™.

1. The engine contains no oil when shipped. Be sure to fill the engine crankcase with the proper type and amount of oil.
2. Be sure boot is secured properly and all hoses are in place and secure.
3. Be sure Tailgate is in place and secure.

WARNING

When refueling, care should be taken not to spill fuel on hot engine. This could cause the fuel to ignite, resulting in serious injury to operator or damage to unit.

OPERATING TIPS

Best vacuum is obtained by running engine at full throttle.

Use good judgment. Do not mow in contour pattern if grades are so steep as to make tipping possible.

The boot should be adjusted to remain level by moving the spacers. To raise the boot, remove cotter hairpin from the caster spindle. Remove the spindle from the bearing and add spacers under the bearing on the spindle. Check boot instruction # 19 for proper spacing.

CAUTION

If it is desired to mow with the Trail Blazer™ removed, the discharge extension or shield must be replaced on the mower deck. Never operate the mower without the Trail Blazer™ boot or original equipment in place.

The Trail Blazer™ is not supplied with a spark arrester muffler. If the Trail Blazer™ is used in the state of California, the state law requires spark arrester mufflers be used to comply with Section 4442 of the California Public Resources Code. Contact your service center and have this muffler installed.

EMPTYING

Optional containers are available for easy removal of debris from unit. The containers break up compaction of grass and are easily emptied. Bagging liners can be used with the containers. When full, the liner is removed from the container, tied off, and set at the curb.

CAUTION

Do not touch the muffler if it is hot.

Never remove Canopy Tailgate unless the power package is shut off. Serious personal injury may result if this caution is ignored.

LEAVES

The Trail Blazer™ was designed to vacuum grass clippings and leaves while mowing.

PICK-UP HOSES

Optional pick-up hoses are available. This allows pick up of large piles of leaves and clean up around shrubs and foundations. Four-inch hose kit is No. 64-193-D or six-inch hose kit is No. MA-589-D. See your dealer for complete details.

LUBRICATION

The wheels on the Trail Blazer™ should be checked periodically to assure proper lubrication is maintained. Grease fittings are located on the hubs when lubrication is needed.

A few drops of oil on the boot wheel spindle and boot hinge assembly will help keep them operating smoothly.

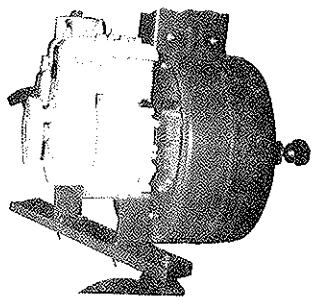
ASSEMBLY INSTRUCTIONS (Continued)

2. Attach adjustment clamp (44) to container (8) with hex head bolt (47).
3. Place frame (28) on container (8) with wheels up.
4. Align holes in frame (28) with holes in bottom of container (8).
5. Place chain plates (30) over outside holes in towbar end of frame.
6. Secure frame with five hex head bolts (31), spring lockwashers (45), and tubular insert (29) as shown.
7. All bolts and nuts may now be tightened.
8. Container (8) should now be turned upright, resting on its wheels (36) and hitch stand (26). **NOTE:** Hitch stand must be locked in down position with latch pin provided on hitch.
9. Attach hose adapter (9) to container (8) on engine side with four hex head bolts (1) and hex lock nuts (7). Flange must be on inside of container.
10. On opposite side of container, secure cover plate (6) to the outside of container (8) with bolts (1) and hex lock nuts (7).
11. Attach latches (16), latch spacers (15) and lock pins (17) to rear of container sides (8), using screws (18), spring lock washers (14) and plain hex nuts (13). **NOTE:** Wire ring on lock assembly must be secured under screw head toward the front of the container.
12. Assemble handle (12) to tailgate (10) with hex head bolts (11) and hex lock nuts (7).
13. Install tailgate (10) to back of container (8). Push top of tailgate assembly against container and secure with latches on both sides.
14. Slide latch pins thru holes in latches to assure latches remain secured.
15. Attach one end of chains (33) to chain plates (30) with $\frac{1}{4}$ anchor shackles (32).

ENGINE AND HOSE ASSEMBLY

(See AF-543)

1. Attach engine and blower housing assembly (1) to frame (28). Secure with four hex head bolts (31), inserts (29) and hex lock nuts (43). **NOTE:** Intake on housing must be facing toward front of unit. If used for left hand discharge mower, engine base (6) must be removed and shifted to opposite engine mounting holes. (See photo)



AF-539

2. Attach muffler to engine. **IMPORTANT: MAKE SURE LOCK NUT (44) IS DRAWN TIGHT.** Secure with "U" bolt (47) to bracket (46). Remove oil drain plug from engine, inserting pipe drain (50) and (51) in its place.
3. Attach smooth end of short hose (20) to hose adapter (9), on container (8) and secure with clamp (19). (See AF-542) Attach other end of hose to the blower housing (10) and secure with clamp (19).
4. Attach long hose (42) to collar (25) and to boot (42). Secure both ends with clamps (48).

The Trail Blazer™ TV-8514 is intended to be used rigidly attached to the tractor. However, it is unique in that with a trailing accessory it can also be used in a trailing mode. In this trailing mode the TV-8514 uses a hitch pin only to attach to tractor and the unit articulates as it is being pulled.

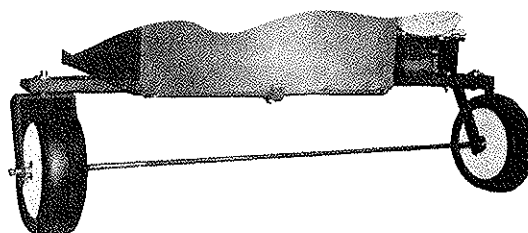
ATTACH TO TRACTOR FOR RIGID MODE

1. Attach completed Trail Blazer™ to tractor drawbar with hitch pin (21) and place hitch stand in transport position.
2. Wrap free end of one chain (33) around axle housing of tractor and secure back to chain with $\frac{1}{4}$ anchor shackle (32). Repeat procedure for other chain (33). **NOTE:** If unable to attach to axle housings on tractor, locate alternative points on frame. No more than four inches above or below tractor drawbar.
3. Tighten $\frac{1}{4}$ anchor shackles securely. Be sure chains do not interfere with any moving parts.

ATTACH TO TRACTOR FOR TRAILING MODE

(See Photo)

If desired, the TV-8514 may be attached to the tractor for use in a trailing mode by using accessory number MA-574-D. This accessory consists of a thru axle which ties together both wheels preventing them from casting.



AF-540

WARRANTY INFORMATION

Parker Sweeper Company warrants each new piece of equipment manufactured under its name except the engine, to be free of defects in materials and workmanship under normal use and service. Parker Sweeper Company's obligation is limited to repair or replacement at its option for one (1) year (ninety (90) days for commercial service) from date of purchase.

If trouble should occur with the engine, please contact the manufacturer listed below, giving them all information: Name of unit purchased from company (Parker Trail Blazer™ 8514, etc.); problem with engine, model no. of engine etc.; when unit was purchased; and your complete return address with zip code. Failure to provide complete information will result in unnecessary delay of repair and return of unit.

Proper assembly of replacement parts is the responsibility of the owner or mechanic doing the work. Parker Sweeper Company warranty only applies to the original purchased unit and/or replacement parts if assembled correctly by a qualified mechanic. Under no circumstances does the warranty extend beyond the original time specified from date of purchase.

ENGINE:

Briggs & Stratton Company
P.O. Box 702
Milwaukee, Wisconsin 53201

SAFETY CHECK LIST

BEFORE USING THIS UNIT CHECK ALL OF THE FOLLOWING ITEMS EACH TIME:

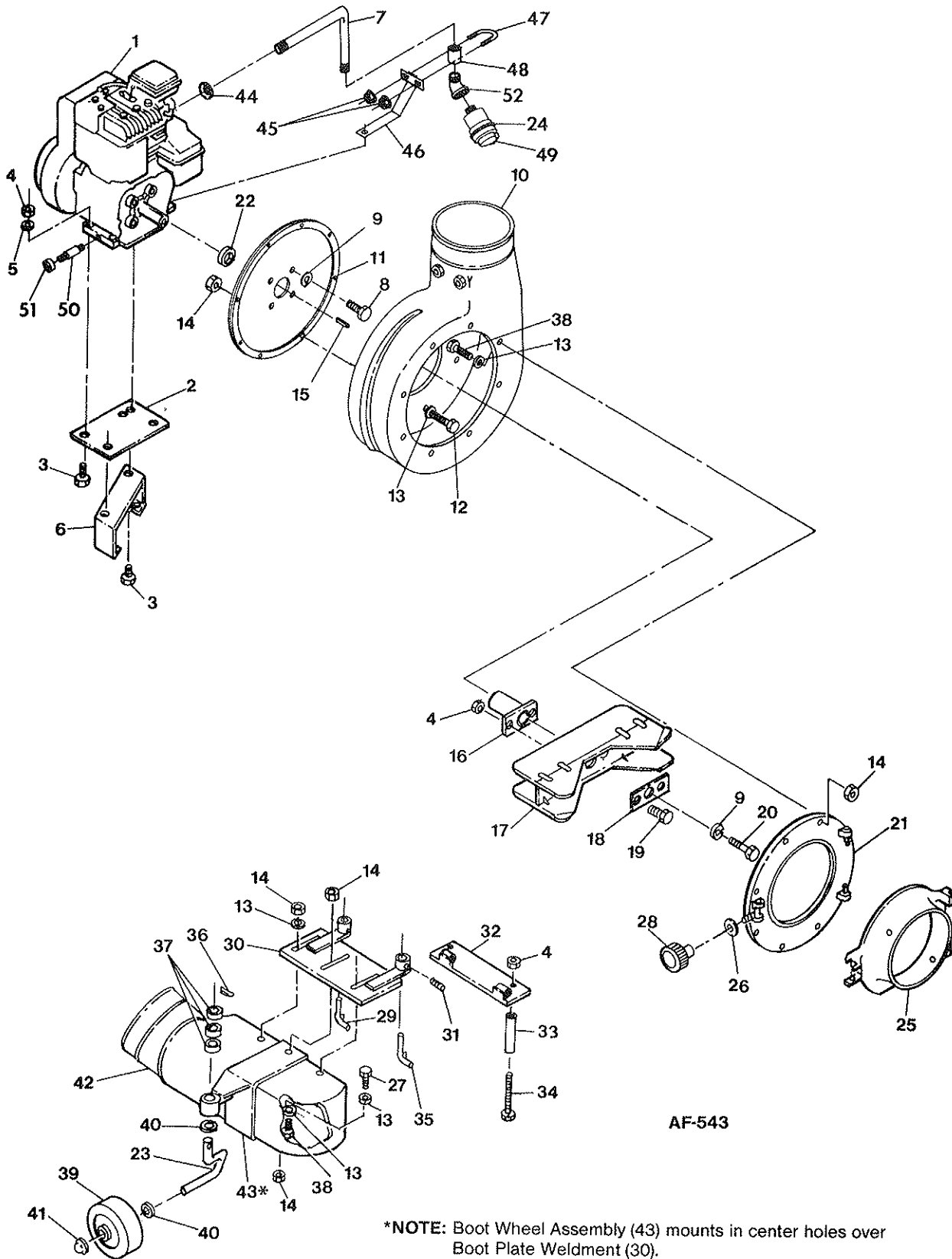
1. Is the engine oil level correct on both the TRAIL BLAZER™ and tractor?
2. Do the wheels of the Trail Blazer™ have grease?
3. Are bolts tight on all parts of the unit?
4. Are all hoses secure?
5. Is the tailgate of the Trail Blazer™ in place correctly and secured with latch and pins?
6. Has the area to be mowed or cleaned been policed for obstacles?

Your safety is our concern. Read all safety rules and operating instructions before attempting to operate this equipment. Failure to follow safety rules and operating instructions may result in serious injury.

CONTAINER ASSEMBLY PARTS LIST

Ref. No.	Part No.	Qty. Per Unit	Description
1	65-416-12	22	Bolt Hex Head 1/4-20 x 3/4
2	945-416	11	Flatwasher Plain 1/4
3	84-368-C	1	Top Cover Weldment
4	84-344-B	1	Retainer Strip
5	84-365-B	1	Screen
6	84-181-C	1	Cover Plate
7	365-416	24	Nut Hex Lock 1/4-20
8	84-329-C	1	Metal Container Silkscreen
9	84-96-D	1	Hose Adaptor
10	84-353-C	1	Tailgate Silkscreen
11	65-416-10	2	Bolt Hex Head 1/4-20 x 5/8
12	84-296-B	1	Handle
13	335-416	4	Nut Hex Plain 1/4-20
14	935-416	4	Lock Washer Spring 1/4
15	84-226-A	2	Latch Spacer
16	84-245-A	2	Latch
17	SA-1302-A	2	Lock Assembly
18	515-416-16	4	Screw Rd. Hd. Mach. 1/4-20 x 1
19	84-152-C	2	Clamp
20	84-359-B	1	8" Diameter Hose (Canopy)
21	84-228-B	1	Hitch Pin
22	65-516-32	2	Bolt Hex Head 5/16-18 x 2
23	65-516-16	1	Bolt Hex Head 5/16-18 x 1
24	58-107-B	1	Clevis
25	SA-1306-A	1	Lock Assembly
26	84-185-B	1	Hitch Stand
27	84-184-C	1	Hitch Bracket
28	84-363-C	1	Frame and Spacer Weldment
29	80-238-A	11	Insert
30	84-188-A	2	Chain Plate
31	65-516-28	9	Bolt Hex Head 5/16-18 x 1 3/4
32	84-203-A	4	1/4 Anchor Shackle
33	84-205-B	2	Chain, Link
34	84-388-A	2	Retaining Ring
35	60-816-80	2	Bolt Hex Head 1/2-20 x 5
36	84-377-C	2	Yoke Caster Weldment
37	84-177-A	4	Spacer Wheel
38	84-387-A	4	Bearing Wheel
39	84-379-C	2	Wheel
40	367-816	2	Nut, Lock Jam
41	68-216-A	4	Bearing, Flanged
42	84-130-B	1	8" Diameter Hose (Boot)
43	365-516	7	Nut Hex Lock 5/16-18
44	84-358-A	1	Tailgate Adjustment Clamp
45	935-516	6	Lockwasher Spring
46	71-69-A	2	Spacer
47	65-516-12	1	Bolt, Hex Hd. 5/16-18 x 3/4
48	84-389-C	2	Hose Clamp (w/step)

POWER PACKAGE



AF-543

POWER PACKAGE PARTS LIST

Ref. No.	Part No.	Qty. Per Unit	Description
1	85-03-D**	1	Engine 5 HP B & S
2	84-190-C	1	Base Plate
3	65-516-28	4	Bolt Hex Head 5/16-18 x 1 3/4
4	365-516	8	Nut Hex Lock 5/16-18
5	945-516	4	Flatwasher Plain
6	84-149-C	1	Engine Base
7	85-24-B	1	Muffler Pipe
8	60-516-10	4	Bolt Hex Head 5/16-24 x 5/8
9	935-516	5	Lockwasher, Spring
10	SA-1304-C	1	Blower Housing & Liner Assembly
11	84-239-C	1	Back Cover & Gasket
12	65-416-14	8	Bolt Hex Head 1/4-20 x 7/8
13	945-416	22	Flatwasher, Plain
14	365-416	20	Nut Hex Lock 1/4-20
15	61-65-A	1	Key-Engine
16	78-02-A	1	Adapter
17	63-287-B	1	Fan Blade Assembly
18	63-305-A	1	Fan Hub Anchor Plate
19	65-516-20	2	Bolt Hex Head 5/16-18 x 1 1/4
20	60-516-32	1	Bolt Hex Head 5/16-24 x 2
21	SA-1336-D	1	Front Cover Assembly
22	78-05-A	1	Spacer-Blower
23	83-209-B	1	Axle
24	***	1	Muffler (supplied with engine)
25	63-195-D	1	Collar
26	945-816*	1	Flatwasher Plain
27	65-416-12	1	Hex Head Bolt 1/4-20 x 3/4
28	80-29-A*	1	Adjusting Knob
29	84-107-A	1	Hinge, Rear Weldment
30	84-115-C	1	Boot Plate Weldment
31	560-C-516-10	2	Set Screw, Sq. Hd. 5/16-18 x 5/8
32	84-233-B	1	Deck Plate Weldment
33	84-135-A	2	Spacer
34	72-516-72	2	Bolt Hex Head 5/16-18 x 4 1/2
35	84-109-A	1	Hinge, Front Weldment
36	81-106-A	1	Cotter Hair Pin
37	79-16-A	3	Spacer
38	65-416-16	11	Hex Head Bolt 1/4-20 x 1
39	83-177-C	1	Wheel
40	945-816	2	Flatwasher, Plain 1/2
41	76-254-A	1	Cap-End
42	84-131-D	1	Boot
43	84-275-B	1	Wheel Support Weldment
44	63-262-A	1	Conduit Locknut 3/4
45	362-416	2	Nut, Hex Lock Serrated Flange 1/4-20
46	85-27-B	1	Bracket Weldment
47	73-238-A	1	"U" Bolt 1/4-20
48	66-231-A	1	Coupling 3/4 x 1 5/8
49	***	1	Side Out Deflector (supplied with engine)
50	85-28-A	1	Nipple 1/4 x 1 1/2
51	85-29-A	1	1/4 Cap
52	63-220-A	1	Street Ell 3/4 x 45°

*Supplied with Item 21, but can be purchased separately.

**B & S Model No. 130212, Spec. 2141-01

***Supplied with engine, Muffler No. 393010, Deflector No. 222261

