



Electronic Service Manuals

This electronic document is provided as a service to our customers. We do not create the contents of the information contained in this document. Should you have detailed questions pertaining to the information contained in this document, you may contact Michco, or the manufacturer which provided the original information in this electronic deliverable. Michco's only part in this electronic deliverable was the electronic assembly process. By providing this manual on line we are not guaranteeing parts availability.

You may contact Michco through the following methods:

Phone (517) 484-9312 or (800) 331-3339

2011 N. High St. -- Lansing, Michigan -- 48906

Fax: (517) 484-9836

Email: CustServe@Michco.com

Web site: www.Michco.Com

Parts Web site: www.FloorMachineParts.Com

Order Parts on Line at:

www.FloorMachineParts.Com

Directly to Parts & Service:

By Email: **Shop@Michco.com**

By Fax: (517) 702-2041

By Voice: Use numbers above.

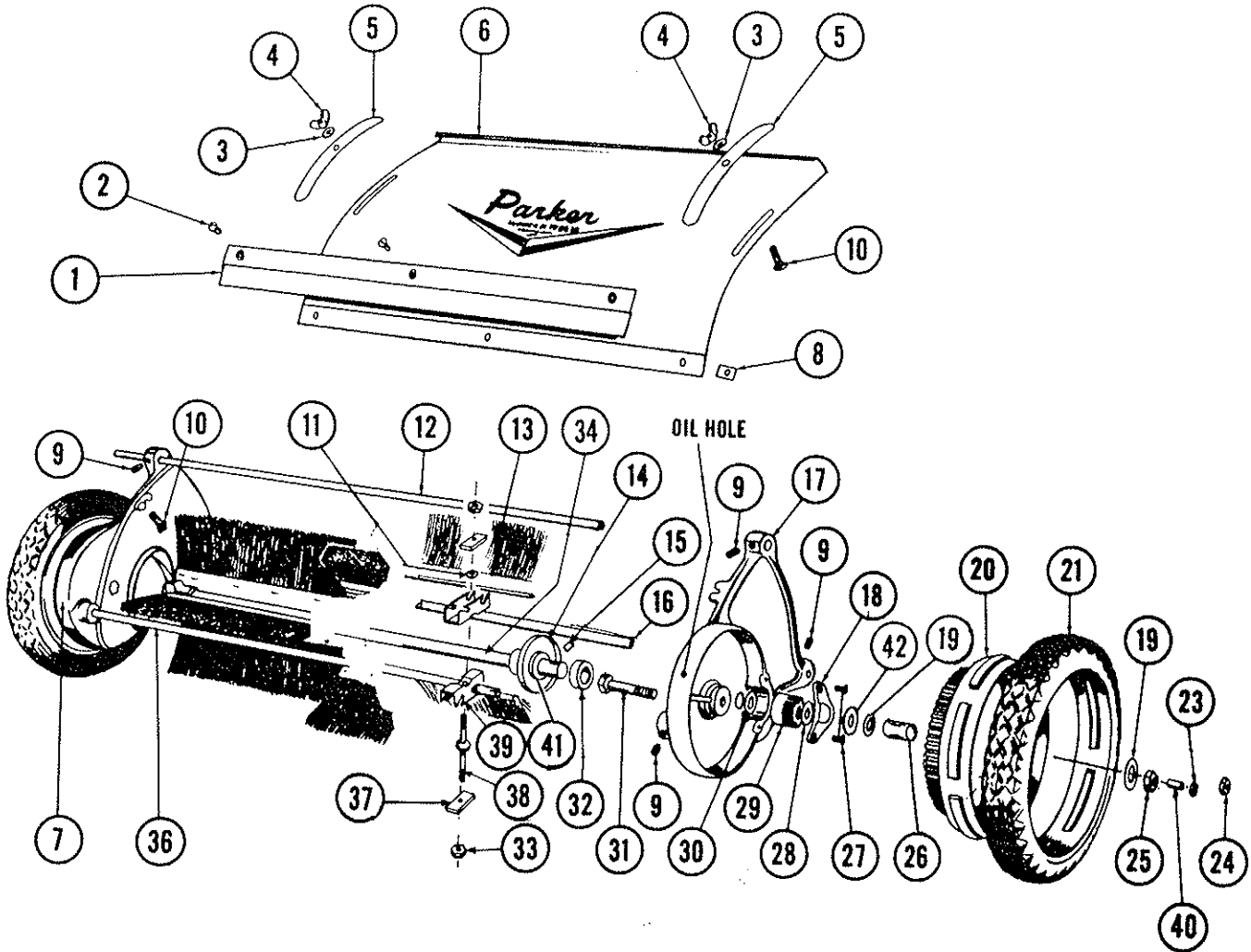
Serving the Cleaning Industry Since 1922

Notice: All copyrighted material remains property of original owners, all trademarks are property of respective owners. Manuals are subject to Manufacturer's reproduction limitations. Originals or reproductions were provided by manufacturers through a request. We make no warranty as to the correctness of information provided in this document and you assume all risk. By placing these manuals on line we are not declaring our corporation to be an manufacturer authorized dealer or provider, please check our web site for authorized manufacturers we represent.

SU-7636 SUBURBANITE

SECTION 4

SWEeper UNIT ASSEMBLY



PARTS LIST

Ref. No.	Part No.	Qty. Per Unit	Description of Part	Ref. No.	Part No.	Qty. Per Unit	Description of Part
1	68-37-B	1	Hood Extension	25	363-816	2	Nut-Hex Lock 1/2
✓2	515-10-8	3	Screw Rd. Hd. #10-24 x 1/2	26	58-06-A	2	Sleeve
3	945-516	2	Washer-Flat	27	505-416-8	4	Screw-Flat Hd. 1/4-20 x 1/2
✓4	351-516-20	2	Wing Nut 5/16-18 x 1 1/4	28	946-1016-16	2	Washer-Fiber
✓5	49-11-A	2	Hood Clamp	29	45-19-LA *	1	Pinion-L.H. (Shown)
6	75-128-C	1	Hood Assembly <i>83-183-D</i>	✓30	50-33-A	2	Washer-Special
7	67-20-RF	1	Side Plate R.H. <i>76-338-R F</i>	✓31	53-35-A	2	Axle
✓8	346-10	3	Speed Nut #10	32	68-60-A	2	Bearing
✓9	560-C-516-10	6	Set Screw-Sq. Hd. 5/16-18 x 5/8	33	362-416	8	Nut-Hex Lock
10	65-516-12	2	Bolt-Hex Hd. 5/16-18 x 3/4	34	75-151-B	1	Reel Shatt <i>SA-511-B</i>
11	75-89-A	4	Retainer	35			
12	68-34-A	1	Tie Rod-Top	36	68-33-A	2	Rod-Tie (Front)
✓13	1200-17-B	8	Brush Assembly	37	69-04-C	8	Clamp-Brush x 1 1/4
14	74-166-B	2	Cover-Dust	38	74-16-A	4	Stud-Brush
15	45-25-A *	2	Pawl	39	74-13-C	8	Bracket-Brush
16	68-35-A	1	Adj. Tube	41	55-161-A	2	Washer-Special
17	67-21-LF	1	Side Plate L.H. <i>76-339-LF</i>	42	946-816-16	2	Washer-Fiber
18	56-94-B	2	Cover-Pinion <i>80-01-B</i>				
19	58-05-A	4	Washer-Special				
20	58-14-D-1	2	Wheel				
21	75-88-E	2	Tire				
22	45-18-RF *	1	Pinion-R.H. (Not Shown)				

* SA-1583-B
PARKER SWEEPER

Pinion Kit

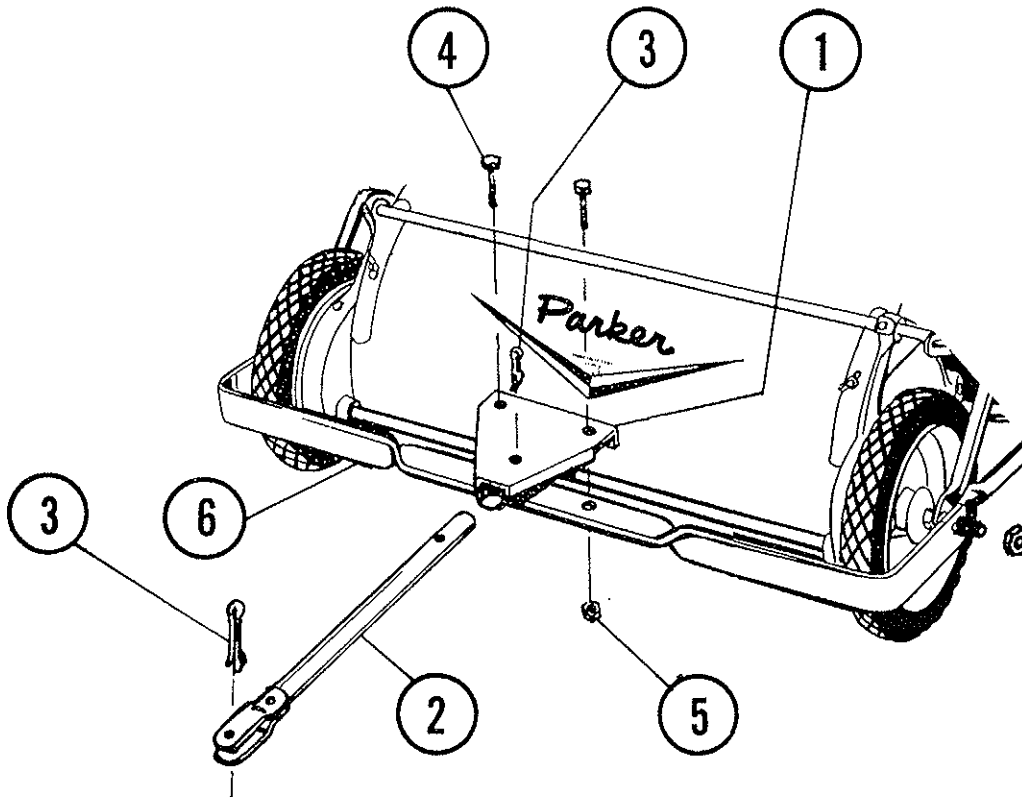
BOX 1728

SPRINGFIELD, OHIO 45501

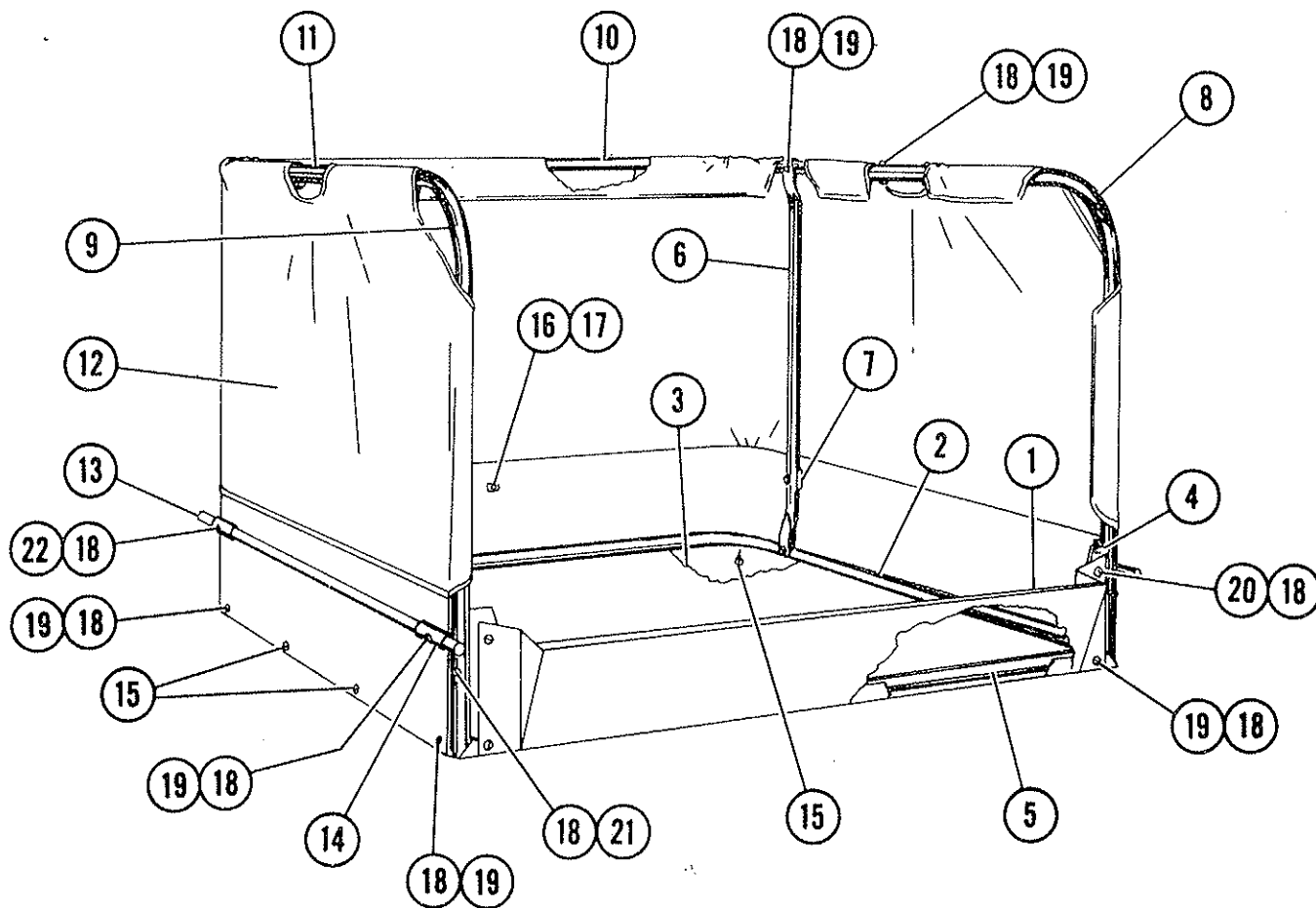
HITCH ASSEMBLY

PARTS LIST

Ref. No.	Part No.	Qty. Per Unit	Description of Part
1	75-40-B	1	Tongue & Yoke Attachment
2	75-32-B	1	Tongue Weldment
3	74-75-A	2	Pin-Clinch 81-14-4
4	65-516-16	2	Bolt-Hex Hd. ⁵ / ₁₆ -18 x 1
5	365-516	2	Nut-Hex Lock ⁵ / ₁₆ -18
6	75-134-B	1	Yoke



BASKET ASSEMBLY



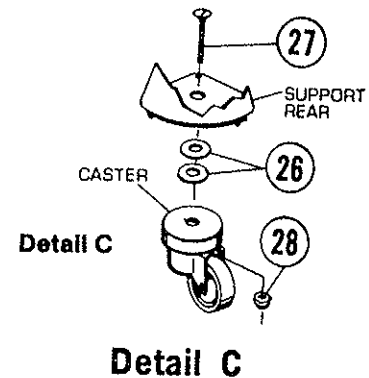
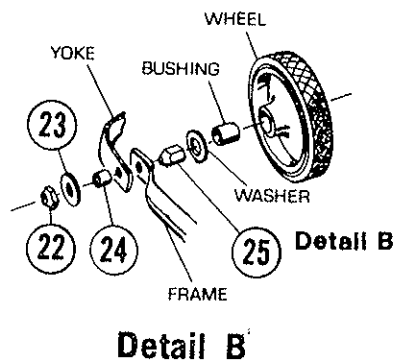
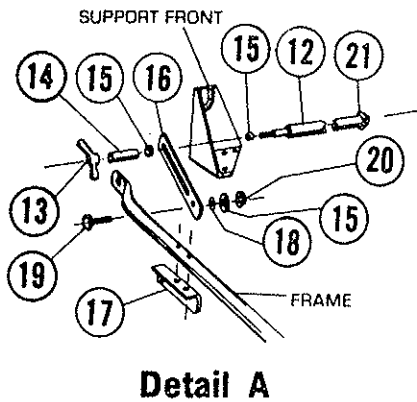
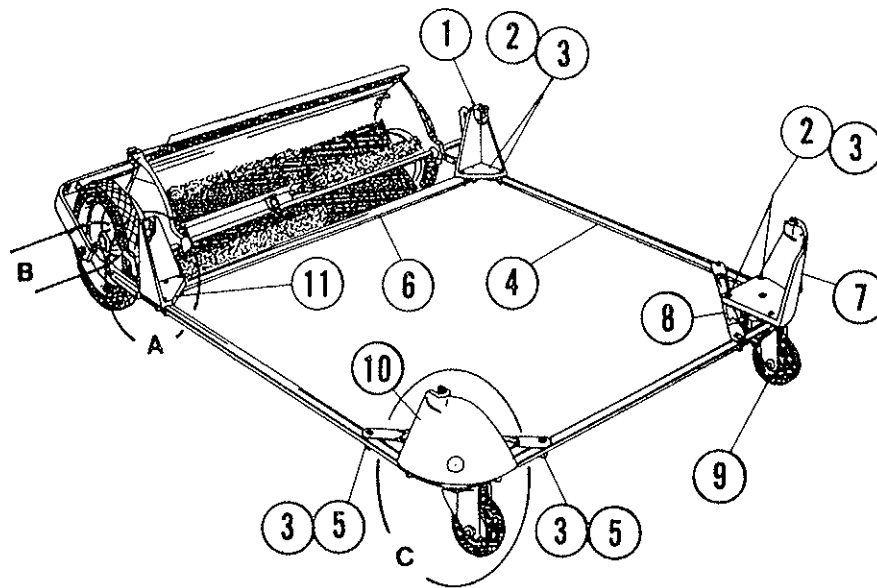
B

PARTS LIST

Ref. No.	Part No.	Qty. Per Unit	Description of Part	Ref. No.	Part No.	Qty. Per Unit	Description of Part
1	68-40-C	1	Extension-Lower Front	12	68-45-E	1	Basket-Sub Assembly
2	68-54-E	1	Frame-Basket Bottom	13	58-126-B	2	Support Rod
3	68-53-E	1	Bottom-Basket	14	63-289-A	4	Reinforcement
4	58-52-C	2	Bracket-Frame	15	534-14-8	15	Screw-Sheet Metal-Washer Hex Hd.
5	68-55-B	1	Tube-Front Basket	16	515-416-6	1	Screw-Rd. Hd. 1/4-20 x 3/8
6	58-125-B	2	Support-Frame	17	346-416	1	Speed Nut 1/4
7	59-77-A	2	Tube Clamp	18	365-416	20	Nut-Lock 1/4-20
8	58-121-LC	1	Frame-Basket, Front Top L.H.	19	65-416-20	6	Bolt-Hex Hd. 1/4-20 x 1 1/4
9	58-122-RC	1	Frame-Basket, Front Top R.H.	20	65-416-12	2	Bolt-Hex Hd. 1/4-20 x 3/4
10	68-56-C	1	Tube-Rear Top Basket	21	65-416-24	14	Bolt-Hex Hd. 1/4-20 x 1 1/2
11	58-124-C	4	Clamp-Handle	22	65-416-28	2	Bolt-Hex Hd. 1/4-20 x 1 3/4

54-802 13

BASKET SUPPORT FRAME ASSEMBLY



PARTS LIST

Ref. No.	Part No.	Qty. Per Unit	Description of Part	Ref. No.	Part No.	Qty. Per Unit	Description of Part
1	58-53-RC	1	Support-Front R.H.	19	65-516-12	2	Bolt-Hex Hd. $\frac{5}{16}$ -18 x $\frac{3}{4}$
2	505-416-28	14	Screw-Flat Hd. $\frac{1}{4}$ -20 x $1\frac{3}{4}$	20	365-516	2	Nut-Lock $\frac{5}{16}$ -18
3	365-416	18	Nut-Lock $\frac{1}{4}$ -20	21	945-616	1	Washer $\frac{3}{8}$
4	68-41-D	1	Frame-Basket Support	DETAIL B, FIGURE 2			
5	65-416-20	4	Bolt-Hex Hd. $\frac{1}{4}$ -20 x $1\frac{1}{4}$	22	368-816	2	Nut-Hex, Self Lock (Thin) $\frac{1}{2}$ -20
6	68-43-B	1	Support-Tubular	23	945-816	2	Washer-Flat SAE $\frac{1}{2}$
7	58-51-R	1	Support-Rear Corner R.H.	24	68-44-A	2	Spacer-Axle
8	58-118-B	2	Brace	25	363-816	2	Nut-Hex, Elastic Stop $\frac{1}{2}$ -20 Ref.
9	75-123-A	2	Caster	DETAIL C, FIGURE 2			
10	58-50-LE	1	Support-Rear Corner L.H.	26	55-156-A	1	Washer-Special
11	58-54-LC	1	Support-Front Corner L.H.	27	505-516-32	2	Screw-Flat Hd. $\frac{5}{16}$ -18 x 2
DETAIL A, FIGURE 2				28	365-516	2	Nut-Hex Lock $\frac{5}{16}$ -18
12	68-59-A	1	Bolt-Special				
13	73-71-A	1	Nut-Wing $\frac{5}{16}$ -18 x $2\frac{1}{2}$				
14	60-58-A	1	Spacer				
15	945-516	5	Washer-Flat $\frac{5}{16}$				
16	59-59-A	2	Bracket-Brush Adjustment				
17	68-31-B	2	Support Angle				
18	54-227-A	2	Spacer				