



Electronic Service Manuals

This electronic document is provided as a service to our customers. We do not create the contents of the information contained in this document. Should you have detailed questions pertaining to the information contained in this document, you may contact Michco, or the manufacturer which provided the original information in this electronic deliverable. Michco's only part in this electronic deliverable was the electronic assembly process. By providing this manual on line we are not guaranteeing parts availability.

You may contact Michco through the following methods:

Phone (517) 484-9312 or (800) 331-3339

2011 N. High St. -- Lansing, Michigan -- 48906

Fax: (517) 484-9836

Email: CustServe@Michco.com

Web site: www.Michco.Com

Parts Web site: www.FloorMachineParts.Com

Order Parts on Line at:

www.FloorMachineParts.Com

Directly to Parts & Service:

By Email: **Shop@Michco.com**

By Fax: (517) 702-2041

By Voice: Use numbers above.

Serving the Cleaning Industry Since 1922

Notice: All copyrighted material remains property of original owners, all trademarks are property of respective owners. Manuals are subject to Manufacturer's reproduction limitations. Originals or reproductions were provided by manufacturers through a request. We make no warranty as to the correctness of information provided in this document and you assume all risk. By placing these manuals on line we are not declaring our corporation to be an manufacturer authorized dealer or provider, please check our web site for authorized manufacturers we represent.

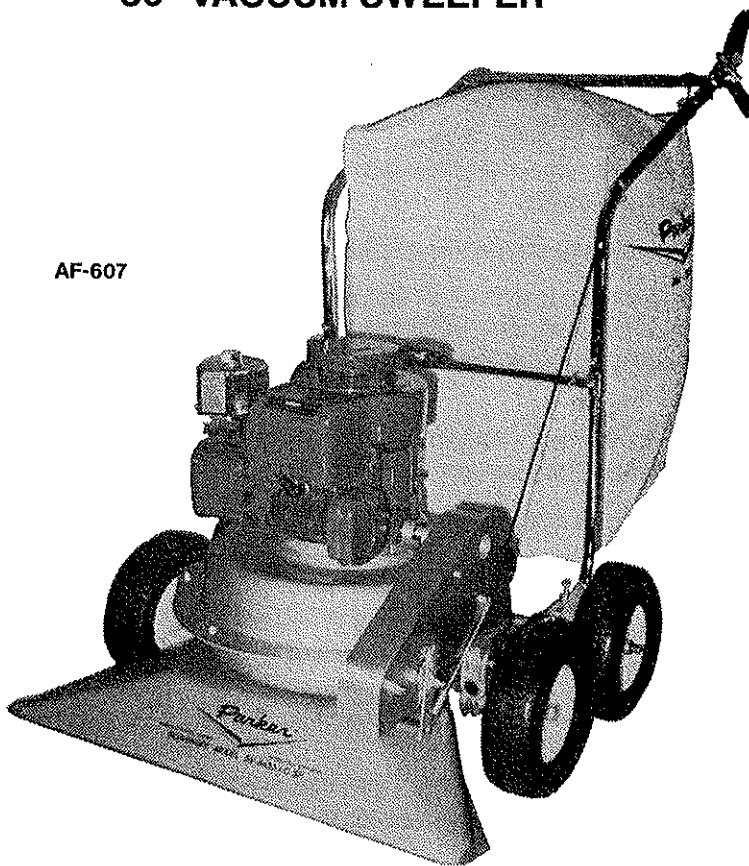
OWNER'S GUIDE



SV-8930-I/C-SP SCAVENGER®

SELF-PROPELLED
30" VACUUM SWEEPER

AF-607



**READ THESE INSTRUCTIONS
BEFORE SETTING UP AND OPERATING MACHINE**

**BE SAFE. PROTECT YOUR FAMILY, YOUR FRIENDS, YOURSELF.
OBSERVE ALL SAFETY INSTRUCTIONS.**

PARKER SWEEPER COMPANY

Box 1728

Springfield, Ohio 45501-1728

Plate No. 1505

90-49-A

TO THE OWNER

These instructions were written to assist you in the assembly and operation of your Scavenger. **READ THE INSTRUCTIONS** thoroughly **BEFORE** attempting to assemble and operate the machine so that you are familiar with the complete procedure and the safety precautions.

RULES FOR SAFE OPERATION



The following safety precautions are suggested to prevent damage to the equipment or injury to the operator or nearby persons.

1. Do not allow anyone to operate the Scavenger without proper instructions.
2. Do not permit children to operate the Scavenger.
3. Do not sweep too close to fire. Ingesting hot ashes will ignite the Bag.
4. Stop the Engine before reaching into the Blower Housing or discharge chute to dislodge sticks or other debris.
5. Stop the Engine before attempting to make any adjustment or performing any maintenance work on the Scavenger.
6. When working on the Engine, always remove the Spark Plug Wire from the Engine and attach it to the V shaped Clip on the Engine head.
7. Do not run the Engine in an enclosed area. Exhaust gases contain carbon monoxide, an odorless and deadly poison.
8. Do not fill the Fuel Tank while the Engine is running. Spilling gasoline on a hot Engine may cause a fire or an explosion.
9. While machine is running, do not leave it unattended.
10. Before using the machine to pick up debris, police the area to be cleaned first, picking up any large objects such as glass, toys, dog bones and chunks of wood. If these pass through the machine, they could damage the Impeller, bend the Engine Crankshaft or put a hole in the Bag.
11. Avoid using the machine in dangerous places where steep slopes or loose debris will endanger the safety of the operator or other people.
12. Keep all Nuts, Bolts and Screws tight to be sure the Scavenger is in safe working condition.
13. Follow the maintenance instructions as outlined in this manual.
14. Do not start or run Engine unless Bag is properly secured as injury may result.

IMPORTANT

**ALWAYS GIVE THE FOLLOWING INFORMATION WHEN
ORDERING REPAIR PARTS:**

- | | |
|--------------------------------------|----------------------------------|
| 1. Part Number (Not Ref. No.) | 3. Description of Part |
| 2. Quantity Needed | 4. Model No. of Scavenger |

**If unable to obtain parts locally, write down above information and send to:
PARKER SWEEPER CO., BOX 1728, SPRINGFIELD, OHIO 45501**

Your unit is right hand (R.H.) or left hand (L.H.) as you stand behind it.

ASSEMBLY INSTRUCTIONS

YOUR SAFETY IS OUR CONCERN. READ ALL SAFETY RULES AND OPERATING INSTRUCTIONS BEFORE ATTEMPTING TO OPERATE THIS EQUIPMENT. FAILURE TO FOLLOW SAFETY RULES AND OPERATING INSTRUCTIONS MAY RESULT IN SERIOUS INJURY.

NOTE: Remove unit from Carton. Do not discard any inserts or packing until unit is completely assembled. All mounting hardware is on the unit in its proper location.

TO ASSEMBLE HANDLES

NOTE: The numbers used in the following steps refer to those used in the parts list and exploded view of the Handle and Bag Assembly on plate number 1507.

1. Remove the four Hex Hd. Bolts (3), Lock Nuts (4), and the Lower Cross Brace (2) from the top of the Lower Handles (14).
2. Slide the Upper Handle Assembly down over the top of the Lower Handles (14).
3. Reassemble the hardware removed in step 1, making sure the Lower Cross Brace (14) is assembled to the top holes and Bolts.

ATTACHING CLUTCH CABLE

1. The Clutch Cable is preassembled to the Upper Handle Assembly in the correct position. Once the Handles are completely assembled it must be connected to the Clutch Arm Weldment.

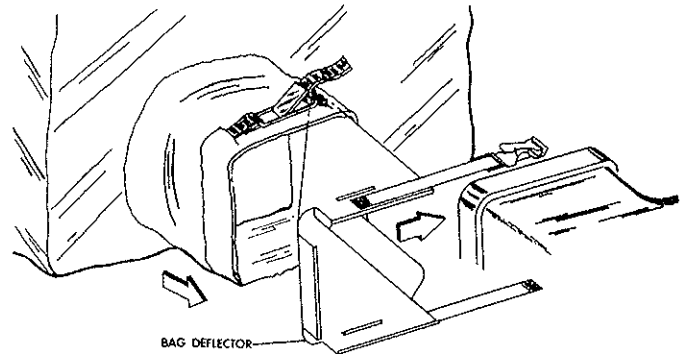
NOTE: The numbers used in the following steps refer to those used in the parts list and exploded view of the Housing and Drive Assembly on Plate Nos. 1138 & 1139.

2. Remove the Round Hd. Machine Screw (51) used to secure the Throttle Cable Clip (19) to the Side Plate (18).
3. Place Throttle Cable Clip around Clutch Cable. Lift the Clutch Handle to release tension in the Clutch Cable.
4. Attach hook at the end of the Cable into the hole in the Clutch Arm Weldment (21).
5. Place the Clip against Side Plate in its proper location and replace Screw.

ATTACHING DEFLECTOR AND BAG

NOTE: The numbers used in the following steps refer to those used in the parts list and exploded view of the Handle and Bag Assembly on plate number 1507.

1. Slide Bag Deflector (19) over the discharge chute, as shown below.



2. Place the Strap into Buckle and tighten Bag Deflector.
3. Slip Neck of the Bag (6) over the Bag Deflector (19) until the Bag Strap rests on the Discharge Housing.
4. Tighten Bag Strap to secure Bag (6) to unit.

NOTE: Unit can be used as a blower by removing Bag and reversing Deflector.

OPERATING INSTRUCTIONS

READ SAFETY & OPERATING INSTRUCTIONS BEFORE OPERATING EQUIPMENT

ENGINE OPERATION:

CAUTION: The Engine contains NO OIL. Before starting the Engine, make sure the Crankcase is filled with the proper amount and type of oil. Refer to the Engine Operating Manual for proper lubrication of the Engine. Read the Engine Manual carefully before operating unit.

MATERIAL HANDLING

DANGER: Improper use of this equipment may result in serious injury.

1. Heavy concentration of sand and gravel should be avoided. These materials are extremely abrasive, and while the Scavenger will handle moderate amounts of these materials, it is not designed for heavy applications. Because these materials are extremely heavy, only small amounts should be allowed to collect in the Bag because large amounts cause poor handling and difficulty in pushing. The Scavenger is capable of picking up empty tin cans and blocks of wood, but it was not intended for this type of service, since tremendous stresses build up as these pieces pass through the impeller. Treat your Scavenger with reasonable care and it will repay you with long trouble-free service.

2. The Scavenger will handle most common kinds of debris found around industrial plants, commercial buildings, homes and farms. Acid-contaminated materials, magnesium, dust and other DANGEROUS DEBRIS that is considered hazardous should not be handled with the Scavenger unless approved by a regulating authority considered to be an expert in the handling of such hazardous materials.

HEIGHT ADJUSTMENT

1. Housing height can be adjusted to suit operating conditions by loosening Knob located at rear of Housing.
2. Slide Knob down in Adjustment Bracket (on Rear Axle) to raise Housing, or up to lower. When desired height is obtained, tighten Knob.

OBSERVE SAFETY RULES AT ALL TIMES.

DON'T TAKE CHANCES!

MAINTENANCE INSTRUCTIONS

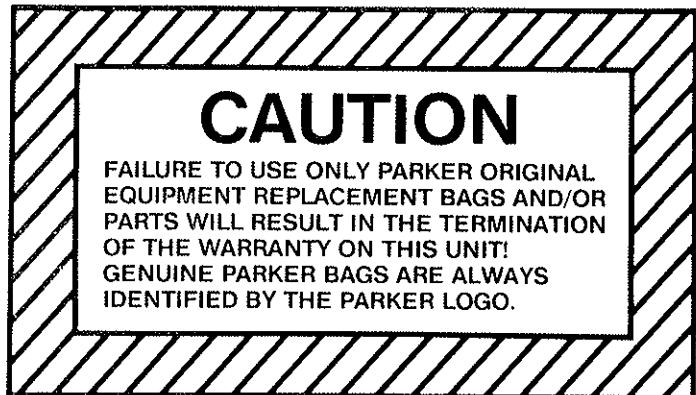
OBSERVE SAFETY RULES AT ALL TIMES. DON'T TAKE CHANCES!

WARNING: DO NOT WORK ON SCAVENGER with Engine running or idling. Bring to a DEAD STOP. Remove spark plug wire on Engine.

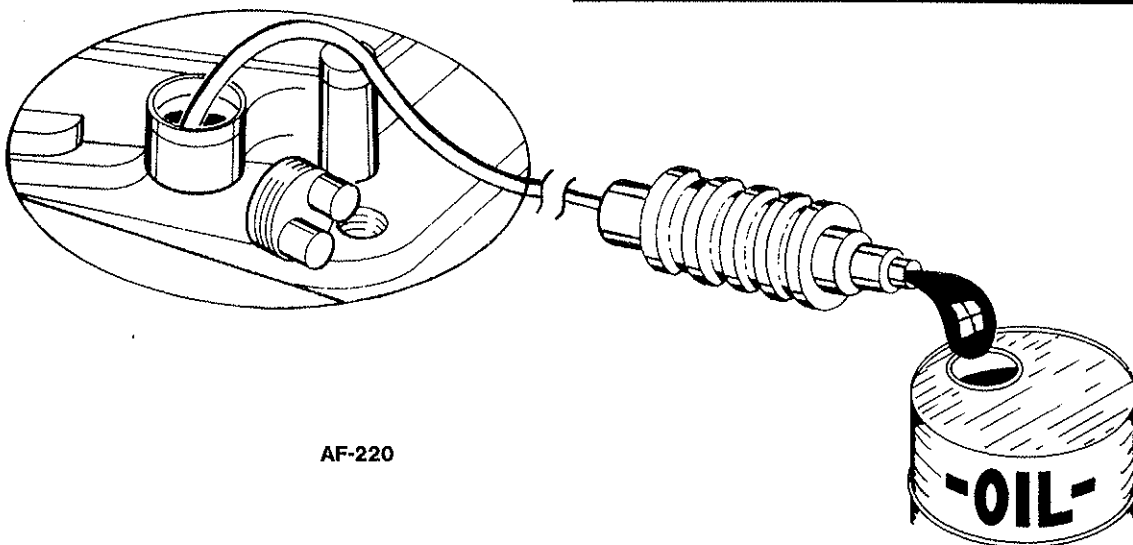
1. For servicing and operating instructions for Engine refer to Engine Manufacturers Service Manual. Careful attention to care of Air Cleaner and Crankcase lubrication instructions will insure longer Engine life. **KEEP ENGINE CLEAN.**
2. Clean the Engine Air Cleaner every 10 hours of operation. (Do so more often under dusty conditions.) If it is punctured, torn, or uncleanable, it should be replaced.
3. Be sure to keep the oil at the proper level in the Engine. Check the oil level each time you fill the fuel tank.
4. To drain the Crankcase oil from the Engine, we have provided a Siphon Pump. To use it, run the Engine for a short time to warm the oil and make it flow more easily. Then remove the cap from the filler hole in the Engine and insert the plastic tube into the hole. Hold the pump below the bottom of the Crankcase and squeeze it several times until oil appears in the tube above the pump, and allow the oil to siphon into a container for disposal. **DISPOSE OF PROPERLY.**
5. Once a year, remove the Wheels and add fresh grease in the teeth of the Gears.

6. DUST BAG CARE

- a. Keep the Dust Bag clean at all times.
 - b. To clean the Dust Bag, turn the bag inside out and reattach to the sweeper.
 - c. Start the Engine and run at full throttle. Lightly tap the bag to release the dust trapped in the weave.
 - d. When the bag is clean remove it and turn it right side out again. Reattach to the sweeper and resume sweeping.
 - e. **DO NOT** wash the Dust Bag to clean. Washing will shrink the material, reducing air flow through the bag and seriously reduce vacuum.
7. The efficiency of this unit depends on the breathing capacity of the Dust Bag. Under extremely dusty conditions the bag should be emptied and cleaned frequently. Always empty and clean bag before storing after use. Debris allowed to remain in the bag may cause spontaneous combustion, resulting in an explosion or fire.

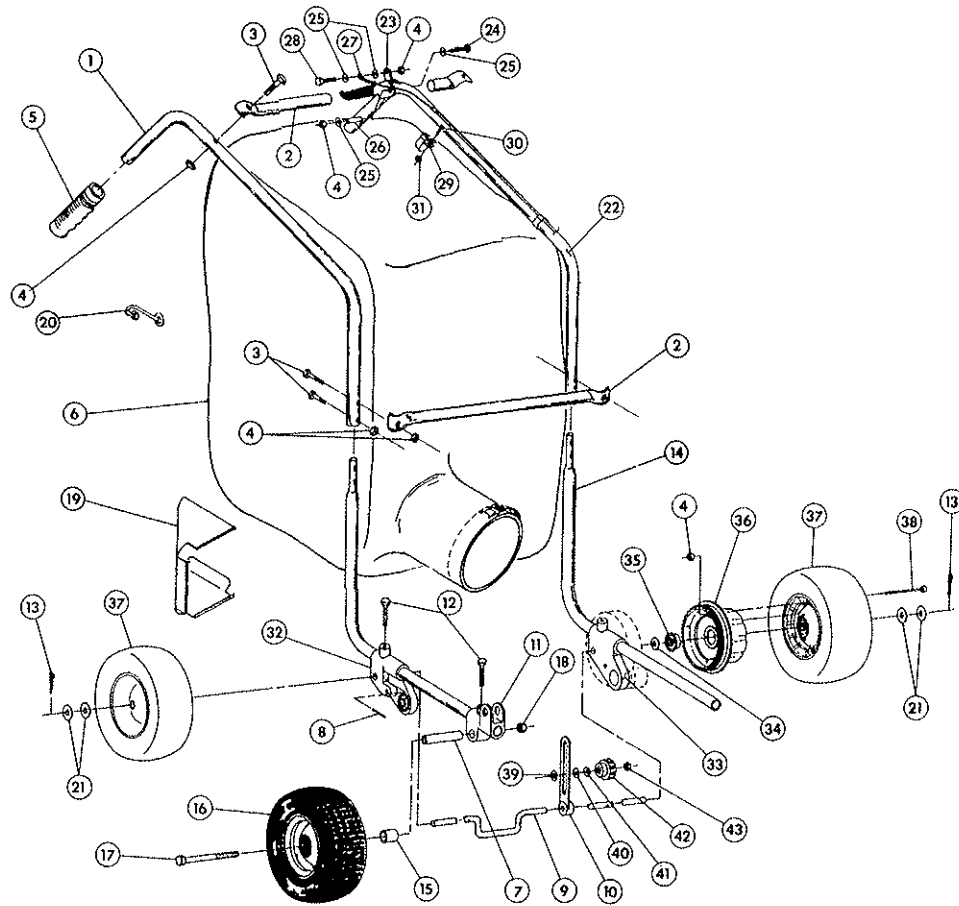


AF-625



NOTE: FAILURE TO OBSERVE SAFETY INSTRUCTIONS MAY RESULT IN SERIOUS INJURY.

HANDLE & BAG ASSEMBLY

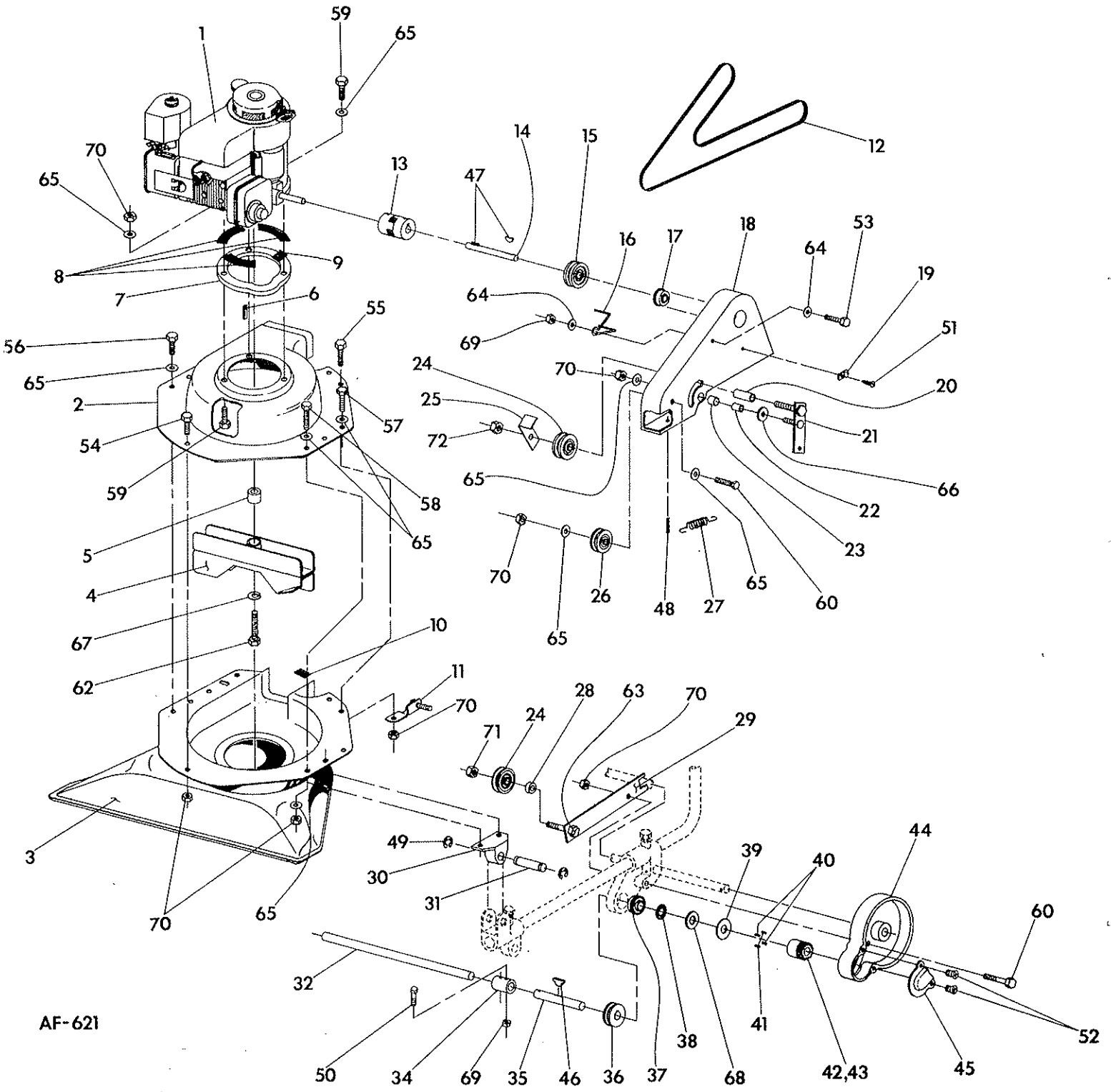


PARTS LIST

Ref. No.	Part No.	Qty. Per Unit	Description	Ref. No.	Part No.	Qty. Per Unit	Description
1	84-61-C	1	Upper Handle	22	86-35-C	1	Upper Handle
2	84-60-B	2	Cross Bar	23	SA-1176-A	1	Clutch Handle Assembly
*3		6	Bolt, Hex Hd. 1/4-20 x 1 1/2	*24		1	Bolt, Hex Hd. 1/4-20 x 2
*4		16	Nut, Hex Lock 1/4-20	*25		4	Flatwasher, Plain 1/4
5	80-232-A	2	Grip, Handle	26	80-225-A	1	Spacer
6	MA-535	1	Bag Assembly	27	86-34-A	1	Clutch Cable
7	85-75-A	2	Spacer	*28		1	Bolt, Hex Hd. 1/4-20 x 1
8	84-103-A	2	Roll Pin 3/16 x 1 1/2	29	86-59-B	2	Clamp
9	86-21-C	1	Axle	*30		2	Screw, Rd. Hd. Mach. 8-32 x 5/8
10	84-236-B	1	Height Adjustment	*31		2	Nut, Hex Lock 8-32
11	84-53-B	2	Pivot	32	86-30-C	1	Pinion & Wheel Support R.H.
12	67-616-32	4	Bolt, Hex Hd. 3/8-16 x 2 (Full Thread)	33	86-31-C	1	Pinion & Wheel Support L.H.
13	380-632-20	2	Cotter Pin	*34		2	Flatwasher, Plain 5/8
14	84-56-C	2	Lower Handle	35	68-60-A	2	Bearing
15	85-76-A	2	Spacer	36	86-42-D	2	Gear
16	84-137-C	2	Wheel	37	86-80-C	2	Wheel
17	60-816-80	2	Bolt, Hex Hd. 1/2-20 x 5	38	524-416-36	8	Screw, Socket Hd. Cap 1/4-20 x 2 1/2
18	368-816	2	Nut, Hex Lock (Thin) 1/2-20	*39		1	Lockwasher, Int. Tooth 5/16
19	82-194-C	1	Deflector Assembly	*40		1	Flatwasher, Plain 5/16
20	63-304-C	4	Bag Hook (Included with Bag Assembly Item 6)	*41		1	Lockwasher, Spring 5/16
21	55-161-A	4	Special Washer	42	79-94-A	1	Knob
				43	364-516	1	Nut, Hex Lock (Thin) 5/16-18

*Items are available thru local hardware, lumber, and auto supply stores. Grade 5 is recommended.

HOUSING & DRIVE ASSEMBLY



AF-621

HOUSING & DRIVE ASSEMBLY

PARTS LIST

Ref. No.	Part No.	Qty. Per Unit	Description	Ref. No.	Part No.	Qty. Per Unit	Description
1	*	1	Engine, 5 H.P. B&S I/C	38	79-104-A	2	Retaining Ring
2	82-04-C	1	Upper Blower Housing Weldment	39	50-33-A	2	Special Washer
3	90-53-D	1	Silkscreen & Housing	40	74-80-A	4	Pawl
4	SA-1392-C	1	Impeller Sub Assembly	41	76-37-A	4	Roller Spring
5	82-24-A	1	Spacer	42	74-79-LC	1	Pinion Gear, LH (Shown)
6	63-130-A	1	Engine Key	43	74-78-RC	1	Pinion Gear, RH
7	86-13-C	1	Adapter Ring	44	86-109-C	2	Dust Cover
8	86-17-B5	3	Self-Adhesive Poly Foam	45	80-01-B	2	Pinion Cover
9	86-17-B2	1	Self-Adhesive Poly Foam	46	280-09	1	Key, Woodruff 3/16 x 3/4
10	64-178-A1	1	Rubber Shim	47	280-5	2	Key, #405 Std. Woodruff
11	84-238-A	1	Adjustment Bracket Weldment	48	380-432-16	1	Cotter Pin
12	86-85-A	1	Belt	49	1000-10	4	Ring, Ext. Clip (Truarc #5304-62)
13	78-197-A	1	Flexible Coupling Assembly	**50		2	Bolt, Hex Hd. 1/4-20 x 1 1/2
14	86-84-A	1	Clutch Shaft	51	504-1032-8	1	Screw, Rd. Hd. Mach. 10-32 x 1/2 (Self-Tapping)
15	80-283-A	1	Sheave			4	Screw, 82° Flat Hd. Self-Tapping Mach.
16	86-67-A	1	Belt Popper	**52		1	Bolt, Hex Hd. 1/4-20 x 1
17	79-24-A	1	Bearing, Radial Flange			4	Bolt, Hex Hd. 5/16-18 x 5/8
18	86-18-D	1	Side Plate	**53		1	Bolt, Hex Hd. 5/16-18 x 3/4
19	75-115-A	1	Throttle Cable Clip	**54		2	Bolt, Hex Hd. 5/16-18 x 1
20	86-99-A	1	Spacer	**55		1	Bolt, Hex Hd. 5/16-18 x 1 1/2
21	86-63-B	1	Clutch Arm Weldment	**56		2	Bolt, Hex Hd. 5/16-18 x 1 3/4
22	51-23-A	1	Spacer	**57		3	Bolt, Hex Hd. 5/16-18 x 2
23	86-95-A	1	Bushing	**58		3	Bolt, Hex Hd. 5/16-18 x 2 1/4
24	83-66-A	2	Clutch Pulley	**59		1	Bolt, Hex Hd. 3/8-24 x 2 1/2
25	86-60-B	1	Belt Popper	**60		1	Bolt, Hex Hd. 3/8-16 x 1 3/4
26	SA-864-A	1	Sheave & Bearing Assembly	62	60-616-40	2	Flatwasher, Plain 1/4
27	80-193-A	1	Spring, Extension	**63		16	Flatwasher, Plain 5/16
28	86-86-A	1	Spacer	**64		1	Flatwasher, Plain (wide) 5/16
29	86-61-B	2	Idler Arm	**65		1	Lockwasher, Spring 3/8
30	84-54-B	2	Pivot (Machined)	**66		2	Flatwasher, Plain 5/8
31	86-20-B	2	Pivot Pin	**67		3	Nut, Hex Lock 1/4-20
32	86-65-A	1	Shaft, Split Drive	**68		17	Nut, Hex Lock 5/16-18
34	80-180-A	1	Shaft Coupling	**69		1	Nut, Hex Lock 3/8-16
35	86-66-A	1	Split Drive	**70		1	Nut, Hex Lock (thin) 3/8-16
36	80-198-A	1	Sheave	**71			
37	68-60-A	2	Bearing	72	364-616	1	Nut, Hex Lock (thin) 3/8-16

* B&S Model Number ~~192982~~ Type 4055, Trim 02
196792

*Items are available thru local hardware, lumber, and auto supply stores. Grade 5 is recommended.

HOW TO RE-INSTALL PINIONS

If for some reason you have found it necessary to remove the pinions, you should carefully follow the following instructions.

- (1) To assist you, we suggest using a piece of wood doweling or plastic material $\frac{5}{8}$ " diameter, 2" long as shown. Each pinion is different as indicated by the part number and must be returned to the correct side of the shaft.

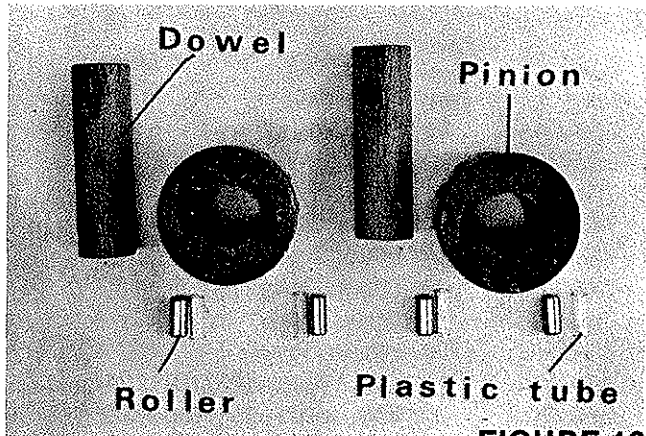


FIGURE 12

- (4) Pinion with part number **74-79 BL** is to be replaced on the **right side** of the shaft. Part Number **74-78BR** is for the **left side**. Line up the pinion (leaving the dowel in place) with the shaft as shown.

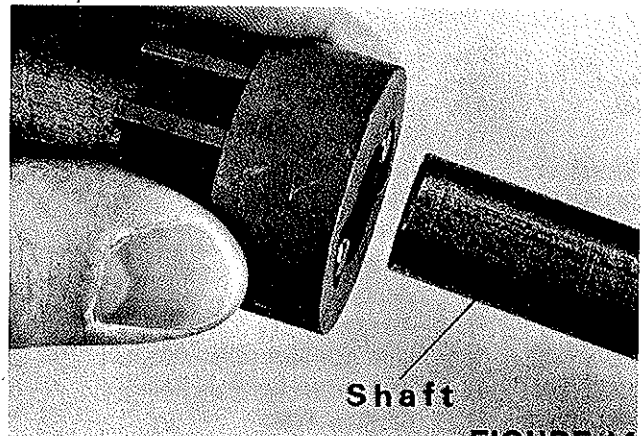


FIGURE 14

- (2) Insert the wooden dowel into the pinion.
- (3) Identify your pinion part number and insert the metal rollers. Place the plastic tubing in the cavity between the metal roller and the wall of the cavity. You may have to force the plastic tubing into this space but it is resilient and is supposed to fit tightly.

- (5) Push the pinion onto the shaft which will force the dowel to back out of the pinion. This will leave the rollers and plastic tubes in their proper position.

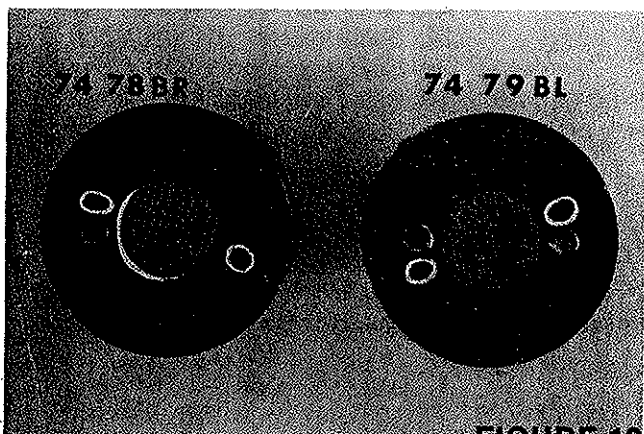


FIGURE 13

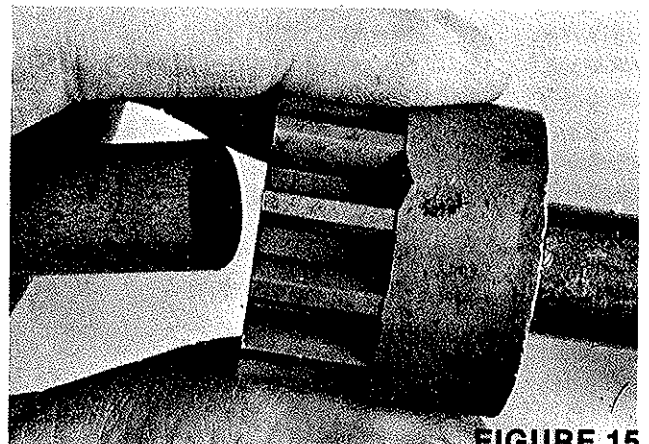


FIGURE 15

- (6) Apply a coating of grease on the outside of the pinion gear teeth and the wheel gear teeth. Replace the wheel.

Note! The right and left side are determined from the operators position.