



Electronic Service Manuals

This electronic document is provided as a service to our customers. We do not create the contents of the information contained in this document. Should you have detailed questions pertaining to the information contained in this document, you may contact Michco, or the manufacturer which provided the original information in this electronic deliverable. Michco's only part in this electronic deliverable was the electronic assembly process. By providing this manual on line we are not guaranteeing parts availability.

You may contact Michco through the following methods:

Phone (517) 484-9312 or (800) 331-3339

2011 N. High St. -- Lansing, Michigan -- 48906

Fax: (517) 484-9836

Email: CustServe@Michco.com

Web site: www.Michco.Com

Parts Web site: www.FloorMachineParts.Com

Order Parts on Line at:

www.FloorMachineParts.Com

Directly to Parts & Service:

By Email: **Shop@Michco.com**

By Fax: (517) 702-2041

By Voice: Use numbers above.

Serving the Cleaning Industry Since 1922

Notice: All copyrighted material remains property of original owners, all trademarks are property of respective owners. Manuals are subject to Manufacturer's reproduction limitations. Originals or reproductions were provided by manufacturers through a request. We make no warranty as to the correctness of information provided in this document and you assume all risk. By placing these manuals on line we are not declaring our corporation to be an manufacturer authorized dealer or provider, please check our web site for authorized manufacturers we represent.

SCAVENGER VACUUM SWEEPER	SIZE 30"	PRODUCTION YEAR 1967	MODEL No. SV-6730
-------------------------------------	---------------------	---------------------------------	------------------------------

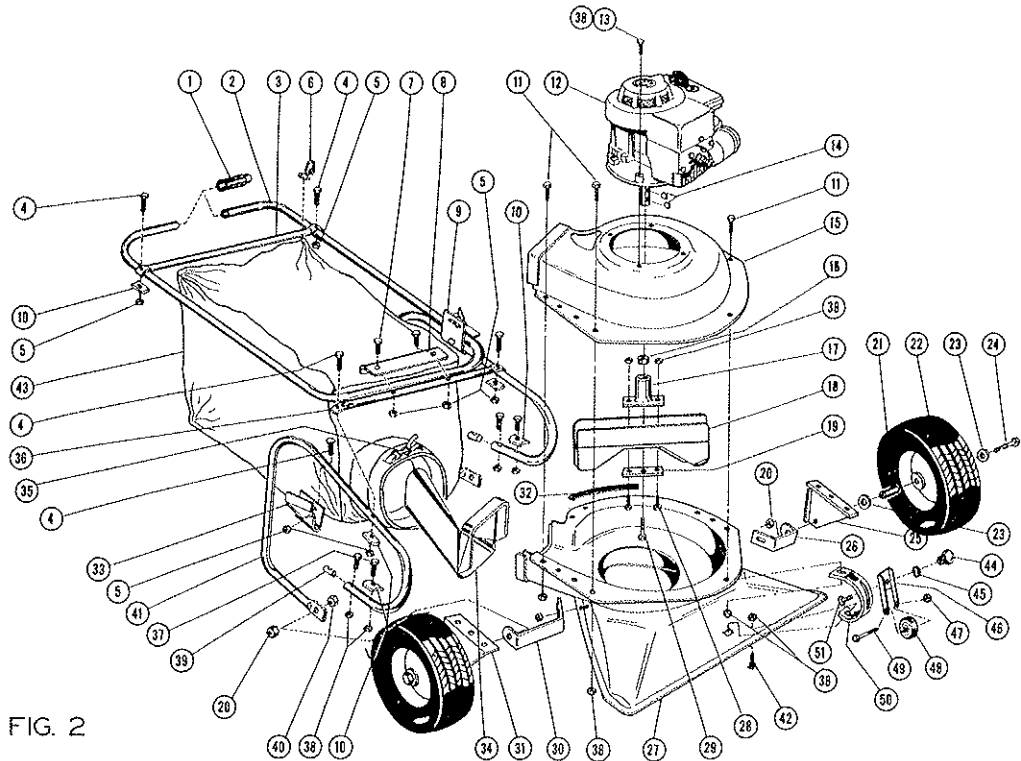


FIG. 2

PARTS LIST

Ref. No.	Part No.	Qty. Per Unit	Description of Part	Ref. No.	Part No.	Qty. Per Unit	Description of Part
1	64-152-A	2	Grip Handle	27	63-297-F	1	Nozzle Assembly <i>USE 67-76-F</i>
2	65-413-C	1	Handle Upper	28	65-516-16	2	Bolt-Hex Head- $\frac{5}{16}$ -18 x 1
3	63-275-B	1	Cross Bar-Upper	29	60-616-28-1	1	Bolt-Hex Head- $\frac{3}{8}$ -24 x 1 $\frac{1}{4}$
4	65-416-20	6	Bolt-Hex Head- $\frac{1}{4}$ -20 x 1 $\frac{1}{4}$	30	66-251-A	1	Brace Wheel Long
5	364-416	8	Nut-Hex Lock Esna- $\frac{1}{4}$ -20 thin	31	63-283-RC	1	Bracket Wheel R.H.
6	63-304-A	4	Hook-Bag Hanger	32	63-299-A	1	Molding Rubber
7	65-416-16	2	Bolt-Hex Head- $\frac{1}{4}$ -20 x 1	33	65-419-RA	1	Bracket Cam Lock R.H.
8	65-416-A	1	Handle-Bracket	34	65-421-C	1	Deflector <i>USE 82-194-C</i>
9	65-420-LA	1	Bracket Cam Lock L.H.	35	63-274-A	1	Strap and Buckle Assembly <i>USE SA-794-E</i>
10	59-77-A	6	Clamp-Tube	36	65-415-B	1	Cross Brace Lower
11	65-516-12	6	Bolt-Hex Head- $\frac{5}{16}$ -18 x $\frac{3}{4}$	37	65-516-24	4	Bolt-Hex Head- $\frac{5}{16}$ -18 x 1 $\frac{1}{2}$
12	65-428-A	1	Engine	38	365-516	18	Nut-Hex Lock Esna- $\frac{3}{16}$ -18
13	65-516-20	3	Bolt-Hex Head- $\frac{5}{16}$ -18 x 1 $\frac{1}{4}$	39	61-13-A	2	Insert-Handle <i>USE 75-80-A</i>
14	64-43-A	2	Key-Hi Pro HP-505	40	367-816	2	Nut-Hex Jam Lock- $\frac{1}{2}$ -20 N.F.
15	63-280-F	1	Housing-Upper	41	65-414-C	2	Handle Lower
16	64-25-A	1	Spacer-Engine Shaft <i>USE # 73-414A</i>	42	66-237-A	1	Stop Bolt- $\frac{5}{16}$ -18 x $\frac{3}{4}$
17	63-298-A	1	Adaptor-Fan Blade	43	64-171-F	1	Dust Bag <i>USE MA-426-1</i> \rightarrow <i>USE</i>
18	63-287-B	1	Fan Assembly	44	59-47-B	1	Knob-Adjusting
19	63-305-A	1	Plate-Retainer	45	935-516	1	Washer-Lock $\frac{3}{16}$
20	325-816	2	Nut-Hex- $\frac{1}{2}$ -20 N.F.	46	64-167-B	1	Fork-Roller
21	66-244-A	2	Bushing Wheel	47	365-616	1	Nut-Hex Lock $\frac{3}{16}$ -16
22	66-243-B	2	Wheel	48	64-169-A	1	Wheel-With Bushing
23	945-816	4	Washer-Flat SAE $\frac{1}{2}$	49	65-616-48	1	Bolt-Hex Hd. $\frac{3}{8}$ -16 x 3
24	66-245-A	2	Axle	50	66-216-B	1	Support Front Roller
25	63-284-LC	1	Bracket Wheel L.H.	51	70-516-32	1	Bolt-Carriage- $\frac{5}{16}$ -18 x 2
26	63-269-B	1	Brace Wheel Short				