



Electronic Service Manuals

This electronic document is provided as a service to our customers. We do not create the contents of the information contained in this document. Should you have detailed questions pertaining to the information contained in this document, you may contact Michco, or the manufacturer which provided the original information in this electronic deliverable. Michco's only part in this electronic deliverable was the electronic assembly process. By providing this manual on line we are not guaranteeing parts availability.

You may contact Michco through the following methods:

Phone (517) 484-9312 or (800) 331-3339

2011 N. High St. -- Lansing, Michigan -- 48906

Fax: (517) 484-9836

Email: CustServe@Michco.com

Web site: www.Michco.Com

Parts Web site: www.FloorMachineParts.Com

Order Parts on Line at:

www.FloorMachineParts.Com

Directly to Parts & Service:

By Email: **Shop@Michco.com**

By Fax: (517) 702-2041

By Voice: Use numbers above.

Serving the Cleaning Industry Since 1922

Notice: All copyrighted material remains property of original owners, all trademarks are property of respective owners. Manuals are subject to Manufacturer's reproduction limitations. Originals or reproductions were provided by manufacturers through a request. We make no warranty as to the correctness of information provided in this document and you assume all risk. By placing these manuals on line we are not declaring our corporation to be an manufacturer authorized dealer or provider, please check our web site for authorized manufacturers we represent.

Minuteman[®]
Parker[®]

Vac 35
Self-Propelled

Model: PV9108-K-SP

OPERATION

SERVICE

PARTS

CARE

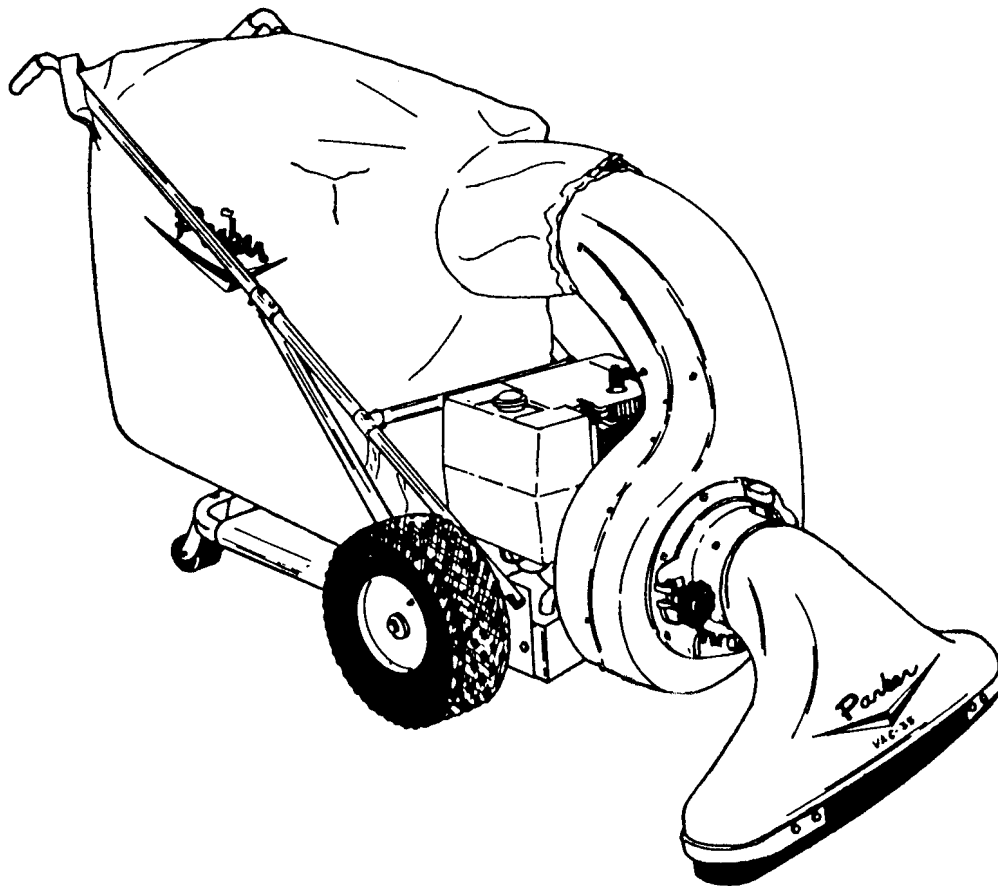


TABLE OF CONTENTS

1 & 2	General Safety Instructions
3	Warning Decal Replacement
4, 5, 6, 7	Assembly Operating Instructions
8	Repair Parts, Handle Assembly
9	Repair Parts, Engine
10, 11	Repair Parts, Traction System
12, 13	Repair Parts, Blower Housing

SOUND		VIBRATION						
99 dB Operator	89 dB At 3m	.015 m/s At Operators Handles						
<p>Tests were conducted on 1/20/95 with calibrated sound and vibration equipment under the conditions noted below:</p> <table style="width: 100%; border: none;"> <tr> <td style="width: 33%;">General Condition: Cloudy</td> <td style="width: 33%;">Wind: 8 km/hr</td> </tr> <tr> <td>Temperature: 5°C</td> <td>Humidity: 68%</td> </tr> <tr> <td>Barometric Pressure: 29.9" Hg</td> <td></td> </tr> </table>			General Condition: Cloudy	Wind: 8 km/hr	Temperature: 5°C	Humidity: 68%	Barometric Pressure: 29.9" Hg	
General Condition: Cloudy	Wind: 8 km/hr							
Temperature: 5°C	Humidity: 68%							
Barometric Pressure: 29.9" Hg								

Model # _____

Serial # _____

EC Declaration of Conformity

according to Directives 89/392 and 89/336

We, Parker Sweeper Company, a division of Minuteman International Incorporated of 111 South Rohlwing Road Addison Illinois 60101 USA, declare under our sole responsibility that the products PV0165BT, PV0165BF, PV8708KT, PV8708KF, PV8708HF, PV0110BT, PV0110BF, PV-9108-KSP, PV0110BSP, PV-9308HSP, PV-9308KSP, PV-9308KSPD, PV-9308-K-D and 99-1117-00 Vac-35 to which this declaration relates corresponds to the relevant requirements of the EC Directives 89/392 and 89/336. The following standards were used to determine compliance with the Directives: EN 292, EN 294, EN 811 and CISPR 12.

Jeffrey Pollack

Jeff Pollack, Standards Engineer

5/15/02

Date

IMPORTANT SAFETY INSTRUCTIONS

READ ALL INSTRUCTIONS BEFORE USING

WARNING

- To prevent personal injury or property damage, do not attempt to start engine until all assembly steps are complete and you have read and understand the safety and operating instructions in this manual.
- Under California, and under laws of several other states, you are not permitted to operation internal combustion's engine using hydrocarbon fuels on any forest covered, brush covered, or grass covered land, or on land with grain, hay, or other flammable agricultural crop, without an engine spark arrester in continuous effective working order.
The engine on your power equipment, like most outdoor power equipment, is an internal combustion engine that burns gasoline, a hydrocarbon fuel. Therefore, your power equipment must be equipped with a spark arrester muffler in continuous effective working order. The spark arrester must be attached to the engine exhaust system in such a manner that flames or heat from the system will not ignite flammable material. Failure of the owner/operator of the equipment to comply with this regulation is a misdemeanor under California law, and may also be a violation of other state and/or federal regulations, laws, ordinances, or codes. Contact your local fire marshal or forest service for specific information about what regulations apply in your area.
- Wear approved safety glasses when operating this equipment. The operation of any powered machine can result in foreign objects being thrown by high-speed rotating parts.
- Wear work gloves, sturdy footwear, and hearing protection when operating this equipment.
- Remove hearing protection and watch for traffic when operating near, or when crossing roadways.
- Do not operate this equipment on a paved, gravel, or hard surface unless the collection bag is installed. Discharged material may bounce from a hard surface.
- Before inspecting or servicing any part of equipment, shut off engine, disconnect spark plug wire from spark plug, and make sure that all moving parts have come to a complete stop. Be aware that rotating blades slow down gradually after engine is shut off.
- Exercise extreme caution on slopes and avoid excessively steep slopes.
- Never leave equipment unattended when engine is running. Shut off engine and disconnect spark plug wire from spark plug before leaving equipment.
- Do not vacuum any burning or smoldering materials such as cigars, cigarettes, ashes or cinders.
- Do not vacuum areas that have been recently treated with fertilizers, pesticides or herbicides. Follow chemical manufacturer's safety instructions regarding contact with treated areas.
- Do not vacuum flammable liquids such as gasoline, kerosene, diesel fuel, paint thinner, etc.

- Never allow children or untrained adults to operate this equipment.
- Keep the area of operation clear of all persons, particularly small children, and pets. Keep bystanders at least 25 feet away from the area of operation.
- Do not run engine in an enclosed area. Engine exhaust contains carbon monoxide gas, a deadly poison that is odorless, colorless, and tasteless. Do not operate this equipment near buildings, windows, or air conditioners.
- Do not allow hands or any other part of the body or clothing inside the vacuum inlet.
- Before removing or installing collection bag, shut off engine, disconnect spark plug wire from spark plug, and allow all moving parts to come to a complete stop.
- Empty the collection bag after each use. Decomposing debris could generate enough heat to catch fire. Before emptying the collection bag, shut off engine, disconnect spark plug and allow all moving parts to come to a complete stop.
- If equipment jams or becomes clogged, immediately shut off engine, disconnect spark plug, and allow all moving parts to come to a complete stop. Use only a wooden stick to clear away debris.
- Do not start engine or operate this equipment with any safety guards or housing removed.

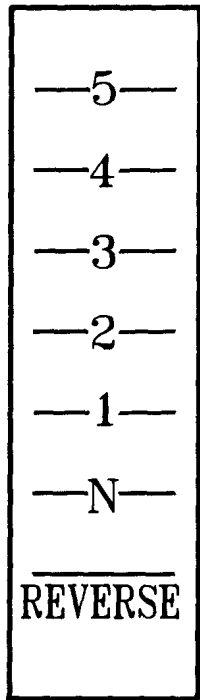
DANGER

Gasoline is highly flammable and its vapors are explosive. To prevent personal injury or property damage:

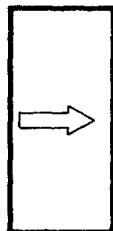
- Do not add fuel if engine is running or still hot from recent operation. Allow engine to cool for at least three minutes.
- Do not fill fuel tank indoors. After filling, wipe up any spills and move away from gasoline fumes before starting engine.
- Do not allow open flame, matches, or smoking in area.
- Fill fuel tank with fresh, clean unleaded regular automotive gasoline, (leaded regular and unleaded or leaded premium grades of gasoline are acceptable substitutes).
- Do not mix oil with gasoline.
- Clean the area around the fuel fill cap and remove the cap from the fuel tank. Insert a clean funnel into the fuel tank.
- Fill the tank to 1/2 inch below the bottom of the filter neck to provide space for any fuel expansion.
- Reinstall the fuel fill cap securely and wipe up any spilled gasoline.

SAVE THESE INSTRUCTIONS

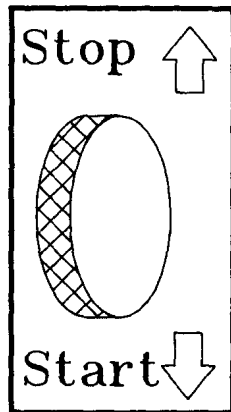
SAFETY DECALS



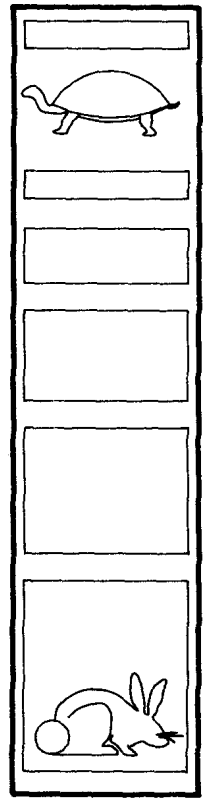
715303



715304

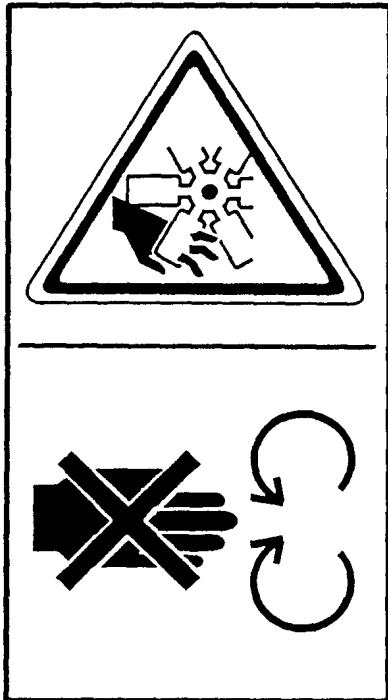


715302

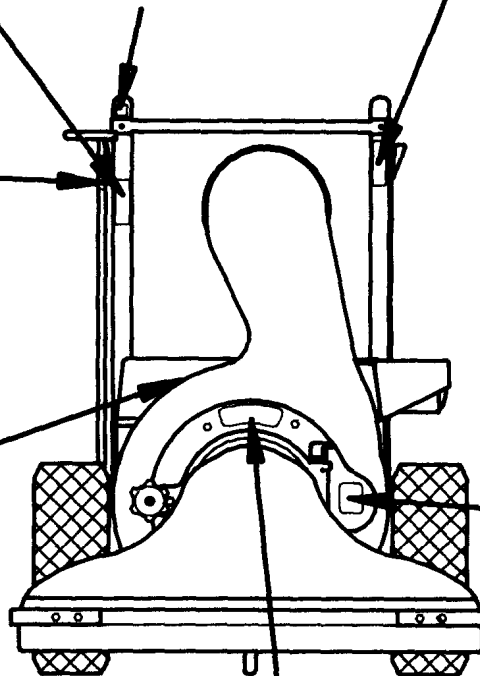


92-30

DO NOT OPEN OR REMOVE
SAFETY SHIELDS WHILE
ENGINE IS RUNNING



715300



CAUTION!
DO NOT START
ENGINE UNLESS
INTAKE HOUSING,
DEBRIS DEFLECTOR
& DUST BAG
ARE SECURED
INPLACE.

84-105A

**STOP FAN BEFORE
REMOVING HOUSING
FAN ← ROTATION**

85-151-A

ASSEMBLY INSTRUCTIONS

1. The VAC 35 covered in this owner's guide is shipped complete in one box. Follow all instructions on assembly very carefully.
2. Unpack all items from carton.
3. Tip box over so wheels are toward floor. Pull unit out of box and stand upright.
4. DO NOT discard the carton or any of the inserts until the unit is completely assembled.
5. All hardware is on the unit in its proper location. If something is missing, notify the dealer/distributor where unit was purchased. If unable to purchase parts locally, contact the Parker Sweeper Company.
6. Whenever the terms left or right hand, or "L" and "R" are used, it means from a position standing behind the unit facing forward.

NOTE: Before continuing with instructions in this Owner's Manual, unpack items from small carton. Assemble those items as outlined in Instruction Sheet included in that package.

HANDLE ASSEMBLY

NOTE: See Figure 1 Handle Assembly on Page 8 of this owner's guide for reference to numbers used in the following instructions.

1. Remove hex head bolts (7) and hexagon lock nuts (49) from the bottoms of the upper handles (5) and (54).
2. Place upper handles (5) and (54) over the ends of the lower handles (25).
3. Align the lower holes in both upper and lower handles. Replace hexagon head bolts (7), removed in Step 1, to each of the lower holes.
4. Lift handles until the back braces can be assembled to bolts (7) assembled in Step 3. Assemble hexagon lock nuts (49). DO NOT TIGHTEN.
5. Align the upper holes in both upper and lower handles. Assemble the remaining two hexagon head bolts (7) and hexagon lock nuts (49). DO NOT TIGHTEN.

NOTE: Check alignment of handle. The hexagon lock nuts have been left loose to allow movement between the holes and the bolts. Do not bend tubing to accomplish proper alignment.

6. Once handles are aligned, tighten all hexagon lock nuts (49).

NOTE: Nuts should be tightened enough that at least two of the bolt threads extend through the nut. It may be necessary to collapse the tubing SLIGHTLY to accomplish this.

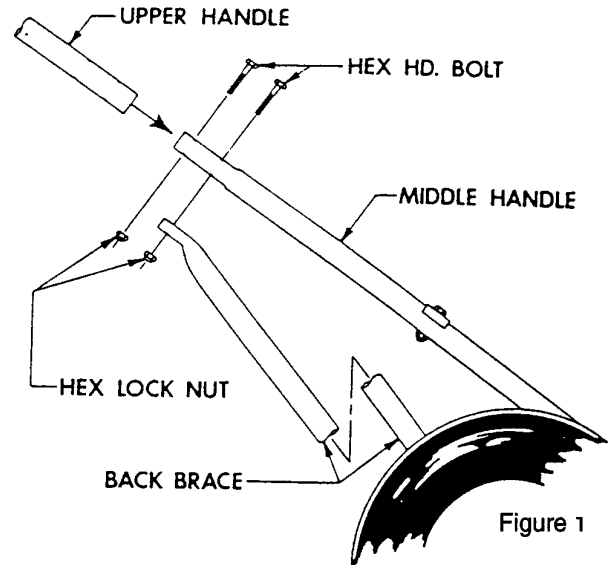


Figure 1

THROTTLE HOOKUP

1. Remove throttle control (40) from the right lower handle (25).
2. Straighten the throttle cable out and run it up the left hand handles (5) and (25).
3. Attach the throttle control (40) to the upper left hand handle (5) with the two oval head screws (39) and hexagon nuts (41) furnished.
4. Attach snap-on clamps (56) to handles to secure throttle cable.
5. Make sure no bends are less than 8" radius.

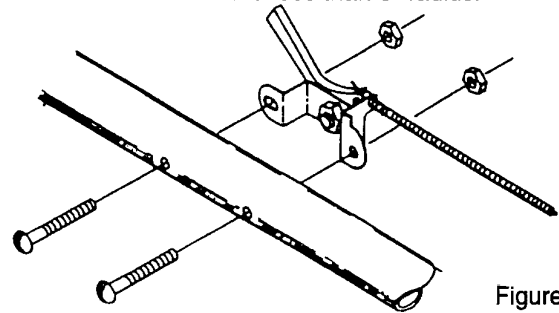


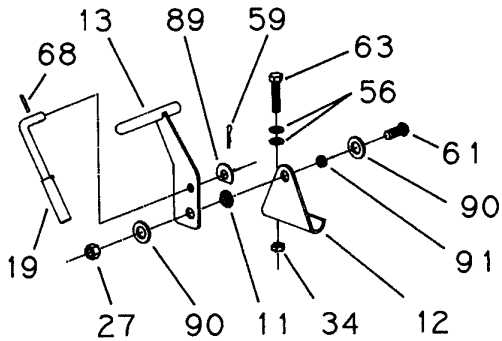
Figure 2

TO ASSEMBLE SPIN-PAK®

NOTE: See Item 2 Housing Assembly on Page 12 of this owner's guide for reference to numbers used in the following instructions.

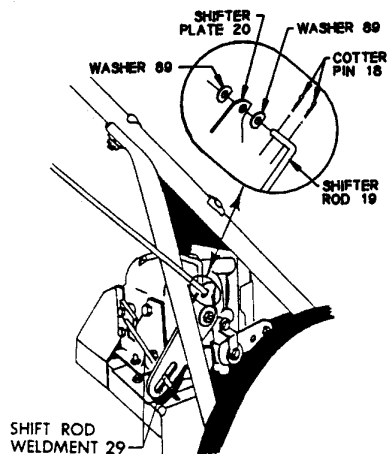
1. Remove hex head bolts (20), flatwashers (18), and lock nuts (26) from the three upper holes used to secure retaining ring (16) to housing assembly (1). DO NOT remove the bottom bolt (20) or retaining ring (16) from housing assembly (1).
2. Align the holes in Spin-Pak (2) with three upper holes in retaining ring (16) and housing assembly (1).
3. Replace hardware removed in Step 1 and tighten.

ASSEMBLY INSTRUCTIONS



SHIFT LEVER CONNECTION

1. Remove cotter pin (59) from upper end of shifter rod (19).
2. Place end of rod through upper hole in shift lever (13). Small pin in rod will act as a stop. Add washer (89).
3. Replace cotter pin (59). Shifter rod (19) should pivot freely in shift lever (13).
4. Secure lower end of shifter rod (19) to shifter plate (20) as outlined below.



5. Pulling shift lever fully to the rear is reverse gear. Moving lever progressively from reverse is neutral, 1st, 2nd, 3rd, 4th and 5th gears. Securing bracket (12) is slotted on bottom for adjustment if necessary.

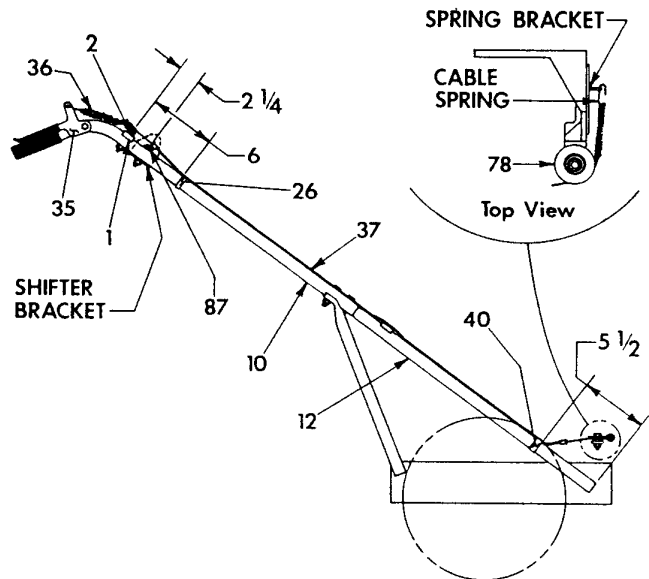
NOTE: Unit will roll freely forward and backwards with the transmission in neutral.

CLUTCH ASSEMBLY AND ADJUSTMENT

1. Remove the snap clamp (26) securing the clutch cable (37) to the left middle handle (12).
2. Run the clutch cable (37) up the right hand upper handle (10) and assemble open loop of spring (37) through hole in tab of clutch grip (35).
3. Check to make sure the lower end of clutch cable is seated in the nylon pulley (78).

NOTE: Proper assembly of the clutch cable is important as it determines the adjustment of the clutch. Follow these instructions carefully to adjust clutch.

4. Loosen the fasteners on wire clamp (40) securing clutch cable (37) to the right middle handle (12).
5. Slide the black outer sheath of clutch cable (37) up or down so that the metal collar on top of sheath is 2 1/4 inches down from the center of the hex head bolt (2) securing upper cross brace (1) to handles.
6. Measure down 6 inches from that same bolt and assemble snap clamp (26), removed in Step 1, to upper handle and clutch cable.
7. Measure up from the bottom of the middle handle (12) to the lowest edge of the wire clamp (40). This should be 5 1/2 inches.
NOTE: If adjustment is needed wire clamp (40) should be loosened enough to allow free movement over cable and handle without pulling or stretching black sheath.
8. Once clamp is properly set, hold in place and tighten fasteners.
9. This should be the correct setting and no further adjustment needed. To check, depress clutch grip (35), engaging clutch, the cable spring should be, almost or just touching nylon pulley (78).
10. If after inspection or operation the clutch would need adjustment, loosen the fasteners on the wire clamp (40). Moving the clamp upward on handle and cable will loosen the tension of clutch. Moving the clamp down will tighten clutch.



ASSEMBLY INSTRUCTIONS

ATTACHING INTAKE HOUSING - Refer to Page 12

1. Insert hinge bosses on collar of intake housing (12) behind the hinged extension on front cover assembly (7).
2. Swing intake housing (12) to lay flat against front cover assembly (7).
3. Secure by placing flatwasher (9) and adjusting knob (8), on pivot bolt, over the collar of intake housing (12) and tighten adjusting knob (8).

ATTACHING DUST BAG

1. Place large loop in upper bag straps over the upper handles.
2. Place neck of dust bag over Spin-Pak® until tie strap can be pulled tight around neck of housing, just over bead on retaining ring. Bead must be covered.
3. Place bag hooks onto loops in lower bag straps and hook to lower cross bar.

WARNING: Failure to attach bag hooks to lower cross bar can cause premature wear of bag and neck at the Spin-Pak®. The Spin-Pak may also break prematurely due to excessive weight from the bag.

WARNING: The engine contains NO OIL. Read the Engine Instruction Manual carefully before operating the VAC 35. Be sure you know how to start and stop the engine before proceeding further. Do not start the engine until all assembly is finished.

WARNING: Make a thorough inspection to see that all fastenings are tight and all parts are properly installed. DO NOT start engine without intake housing and dust bag in place.

If engine is started without intake housing attached, serious injury may result by drawing clothing or parts of the body into the fan.

If engine is run without Spin-Pak or dust bag, small stones or other objects may be picked up and propelled at operator or bystanders through the unprotected opening causing serious injury.

OPERATING INSTRUCTIONS

READ SAFETY OPERATING INSTRUCTIONS BEFORE OPERATING EQUIPMENT

1. Heavy concentration of sand and gravel should be avoided. These materials are extremely abrasive, and while the VAC 35 will handle moderate amounts of these materials, it is not designed for heavy applications. Treat your VAC 35 with reasonable care and it will repay you with long, trouble-free service.
2. The VAC 35 will handle most common kinds of debris found around industrial plants, commercial buildings, homes and farms. Acid contaminated materials, magnesium, dust and other DANGEROUS DEBRIS that is considered hazardous should not be handled with the VAC 35.
3. The efficiency of this unit depends on the breathing capacity of the dust bag. Under extremely dusty conditions the bag should be emptied and cleaned frequently. Always empty and clean bag before storing after use. Debris allowed to remain in the bag may cause spontaneous combustion, resulting in an explosion or fire. See instructions supplied with dust bag.

CLUTCH OPERATION

1. The unit is equipped with a "Dead Man" clutch. When the transmission is put in gear, and the clutch is depressed and held in the down position the unit will move. The unit will stop moving when the clutch is released. Refer to Page 5 for adjustments.

TO START UNIT

IMPORTANT: Read the Engine Manual CAREFULLY before operating the VAC 35. Before starting the engine read and understand the following:

1. Be sure the engine crankcase is filled with the proper type and amount of oil.
2. Spin-Pak is in place.
3. Dust bag or discharge hose is in place.
4. Intake housing or hose kit is attached to the fan housing.
5. Transmission MUST be in NEUTRAL to start.
6. Set brake. Pull starter rewind cable 3 or 4 times.
7. After engine has started, release the brake.

TRANSMISSION OPERATION

NOTE: Transmission has five forward speeds.

1. Transmission used on this equipment is a tractor type (not automotive). The operator does not have to start in first gear and shift on up to gear required, he can go directly into the gear needed. It is also important to understand that the gears are designed to go into mesh (into gear) only when not turning. De-clutching (releasing clutch handle) is required at all times when gear selection occurs. Never shift on hills or inclined surfaces.
2. The operator should not shift with the unit under heavy load. In no case should an operator shift from first to neutral, from reverse to neutral, or from neutral to first or reverse without de-clutching.

MAINTENANCE INSTRUCTIONS

CLUTCH OPERATION

1. Lubricate the wheel bearings and wheel axle on the caster once a week if used daily.

NOTE: Refer to engine operating instruction for proper lubrication of the engine.

2. Add a few drops of oil to the throttle control cable and wire to keep it operating smoothly.

NOTE: Check all items once a week if unit is used daily.

NOTE: Refer to engine operation instructions for proper lubrication of the engine.

DUST BAG CARE

1. Keep the dust bag clean at all times.
2. To clean the dust bag, turn the bag inside out and reattach to the sweeper.
3. Start the engine and run a full throttle lightly tap the bag to release the dust trapped in the weave.
4. When the bag is clean, remove it and turn it right side out again. Reattach to the sweeper and resume sweeping.
5. Bag can be washed if extremely dirty.

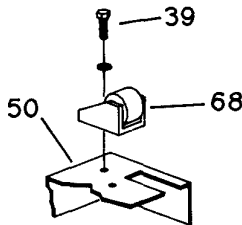
CHAIN TENSIONER ADJUSTMENT

NOTE: See Figure 1 Chassis Assembly on Plate no. 751 to the back of this owner's guide for reference to numbers used in the following instructions.

1. The chain tensioner is adjusted properly at factory before shipment. Chain should be checked periodically for chain tension and wear on chain tensioner. If chain tensioner should need replaced or chain tension adjusted follow these instructions.

NOTE: Round wooden "roller" is not designed to roll. It must be clamped tightly with bolt through casting. Chain side bars will cut guide grooves in roller and chain rollers will roll against wood, assuring proper chain adjustment and guidance without damage to chain.

2. Remove chain cover (15).
3. Loosen hex hd. (39).
4. Slide the tensioner (63) forward (toward chain) until tensioner will not slide further.



5. Pull tensioner back 1/8" and retighten hex head bolt (39).
6. Check chain by pushing down and lifting chain between tensioner and differential sprocket.
7. Chain should move approximately 1/8" when checked. If chain is loose it will jump off sprocket. If too tight, chain may break or cause excessive wear on bearings.

BELT ADJUSTMENT

Best adjustments is automatically controlled by an extension spring on the end of the clutch cable with this system. Belt tension is always correct, reducing belt wear and belt stretch.

BELT REPLACEMENT

1. Remove the spark plug to insure that engine cannot be started accidentally.
2. Belt can be replaced by removing the blower housing and fan.

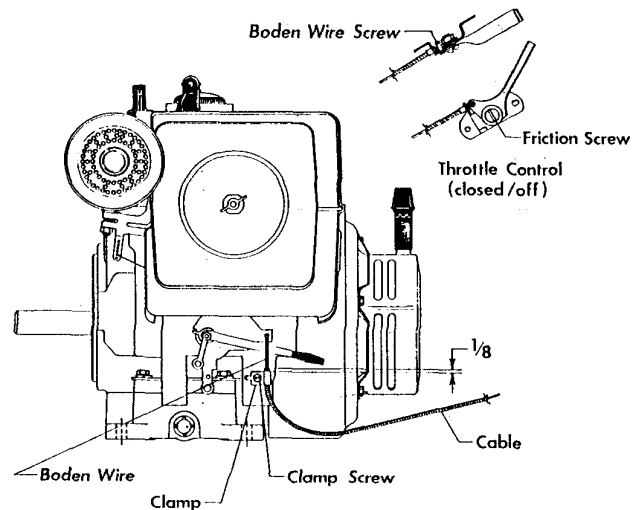
Remove the following items to reach belt:

1. Dust bag
2. Intake housing
3. Front cover
4. Fan
5. Spin-Pak
6. Fan housing
7. Guard

THROTTLE CONTROL CONNECTION

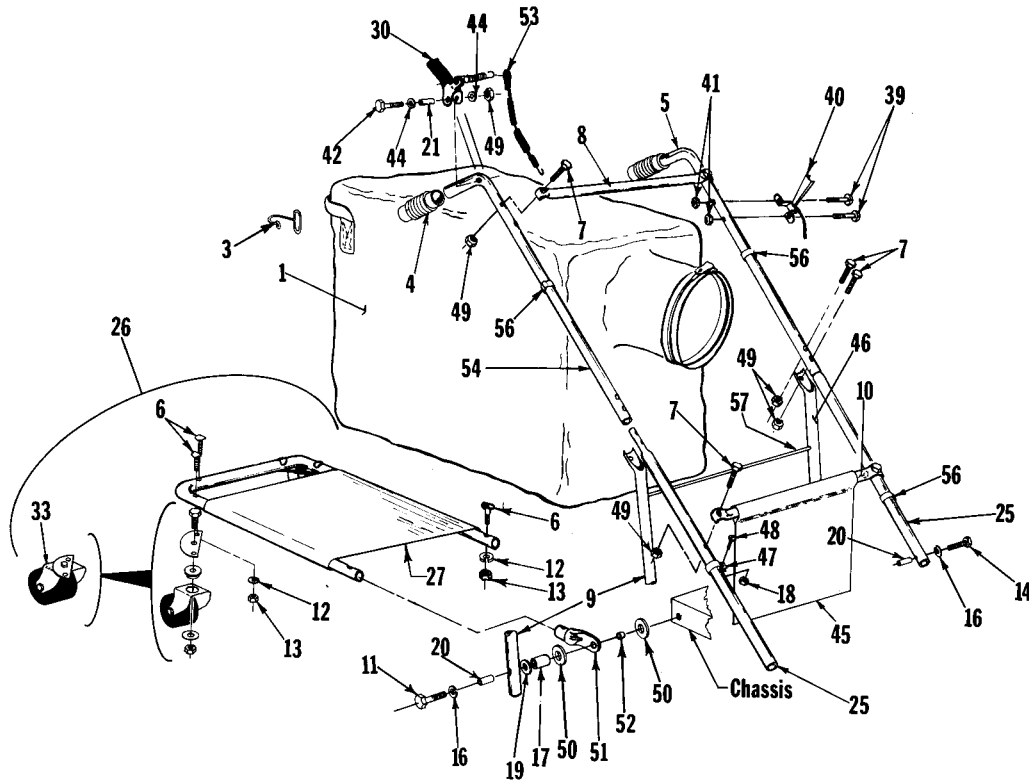
If it becomes necessary to remove or adjust throttle control cable from engine, follow set of instructions below.

1. Place boden wire through clamp and attach to throttle plate as shown in illustration Figure 2.
2. Extend 3" of cable beyond throttle lever clamp and tighten clamp screw.
3. With throttle plate in the closed position on the engine throttle control on handle should also be in the closed position.



NOTE: If throttle does not stay open due to vibration of unit, tighten friction screw on throttle control until there is sufficient friction to hold throttle open.

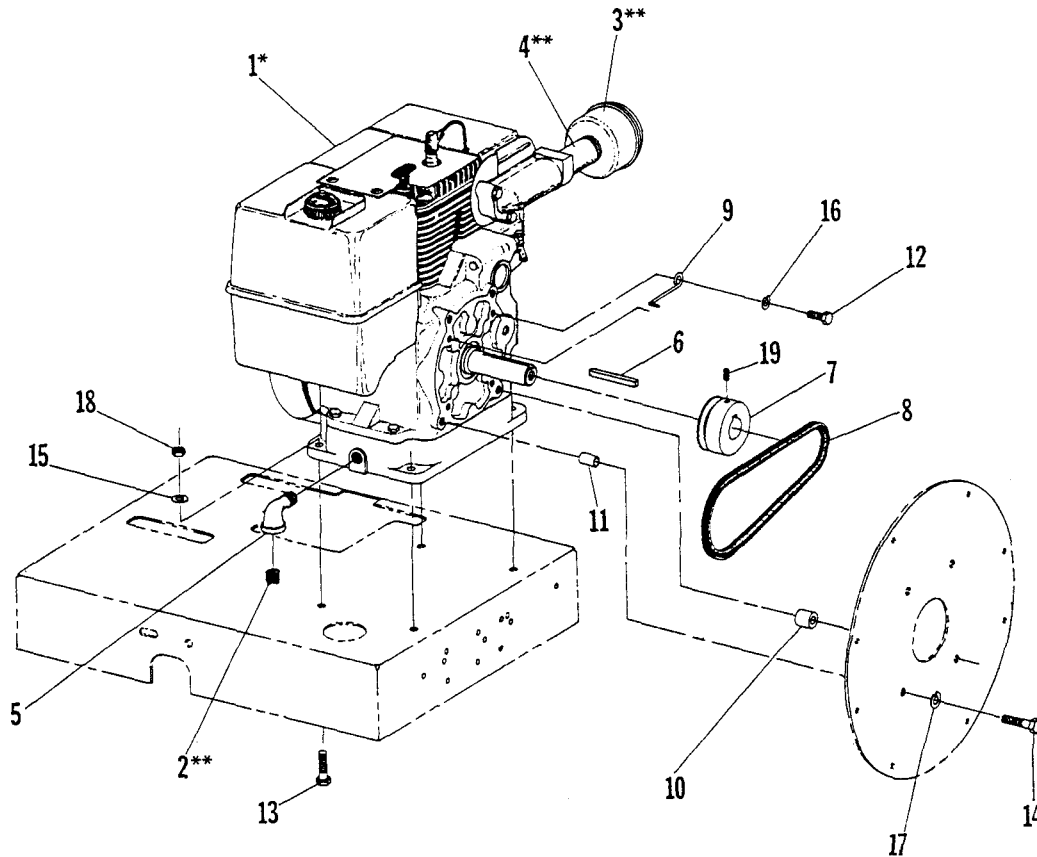
HANDLE ASSEMBLY



PARTS LIST

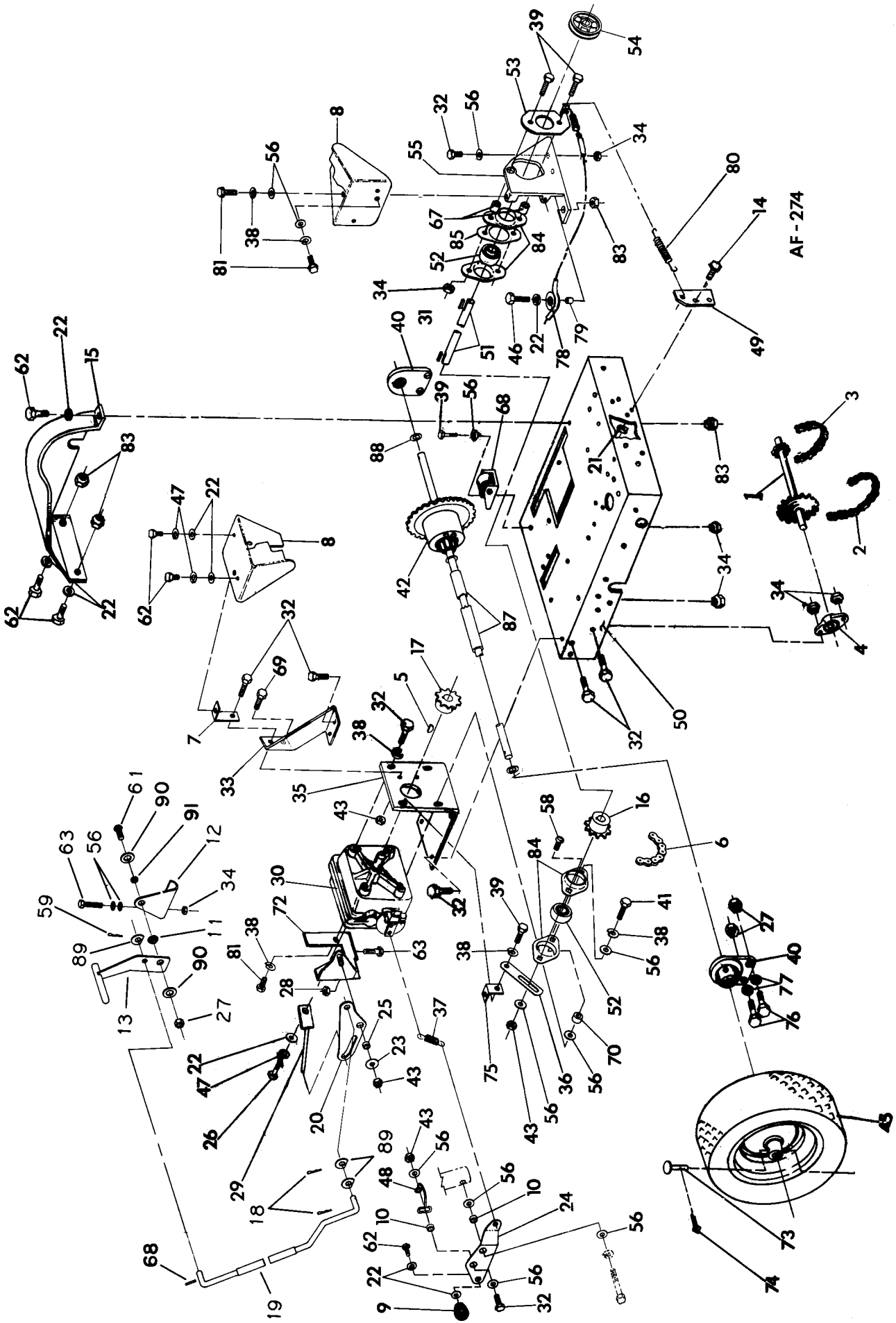
Item	Part No.	Qty.	Description	Item	Part No.	Qty.	Description
1	MA-419	1	Dust Bag Assembly	27	SA-1023-C	1	Frame & Bag Platform
*3	63-304-A	2	Bag Hook	30	SA-1176-A	1	Clutch Grip Assy.
4	80-232-A	2	Handle Grip	33	SA-1021-B	2	Caster & Plate Assy.
5	83-18-C	1	Handle, Upper L.H.	39	515-10-24	2	Screw, Rd. Hd. Mach. #10-24 x 1 1/2
6	69-416-24	6	Bolt, Contour Hd. 1/4-20 x 1 1/2	40	83-25-B-49	1	Throttle Control Assy.
7	713005	8	Bolt, Hex Hd., 1/4-20 x 1 1/2	41	712638	2	Nut, Hex Lock #10-24
8	81-04-B	1	Cross Brace, Upper	42	713007	1	Bolt, Hex Hd. 1/4-20 x 2
9	85-09-RC	1	Back Brace R.H.	44	711505	2	Flatwasher, Plain 1/4
10	81-58-B	1	Cross Brace, Lower	45	80-237-A	1	Bag Guard
11	713033	2	Bolt, Hex Hd., 5/16-18 x 2 1/2	46	85-09-LC	1	Back Brace L.H.
12	711544	6	Lockwasher, Spring 1/4	47	81-88-A	1	Wire Clamp
13	711316	6	Nut, Plain Hex 1/4-20	48	710129	1	Screw, Rd. Hd. Mach. #8-32 x 1/2
14	713030	2	Bolt, Hex Hd. 5/16-18 x 1 3/4	49	711373	9	Nut, Hex Lock 1/4-20
16	711545	4	Lockwasher, Spring 5/16	50	76-36-A	4	Washer, Special
17	81-42-A	2	Spacer	51	81-116-A	2	Tubing End Cap
18	711372	1	Nut, Hex Lock #8-32	52	81-120-A	2	Spacer
19	711506	2	Flatwasher, Plain 5/16	53	90-71-A	1	Cable Assy.
20	80-238-A	4	Inserts	54	81-23-C	1	Handle, Upper R.H.
21	80-225-A	1	Spacer	56	80-276-A	3	Clamp, Snap-On
25	82-242-B	2	Middle Handle	57	86-157-B	1	Bag Guard Retainer
26	MA-471-D	1	Bag Platform Assy. (complete w/hardware)				

ENGINE ASSEMBLY - PV9108-K-SP



PARTS LIST

Item	Part No.	Qty.	Description
1	86-88-D	1	Engine, 8 HP Kohler
2	**	1	Plug, Oil Drain
3	**	1	Muffler
4	**	1	Pipe Nipple 1x4
5	57-81-A	1	Street Elbow 1/2-90°
6	74-112-A	1	Fan Key 1/4 x 2 1/2
7	81-61-A	1	Engine, Pulley
8	90-118-A	1	V-Belt (Gates #1260)
9	81-33-A	2	Belt Popper
10	79-139-A	3	Spacer
11	90-22	1	Spacer
12	713026	2	BLT-HH 5/16-18 X 1
13	713043	4	Bolt, Hex Hd. 3/8-16 x 1 1/4
14	713044	4	Bolt, Hex Hd. 3/8-16 x 1 1/2
15	711507	4	WSR 3/8
16	711506	2	Lockwasher, Spring 5/16
17	945-1216	4	Lockwasher, Spring 3/8
18	711375	4	Nut-Loc 3/8 (Kohler)
19	711373	1	Screw, Allen Hd. Set 1/4-20 x 1/2



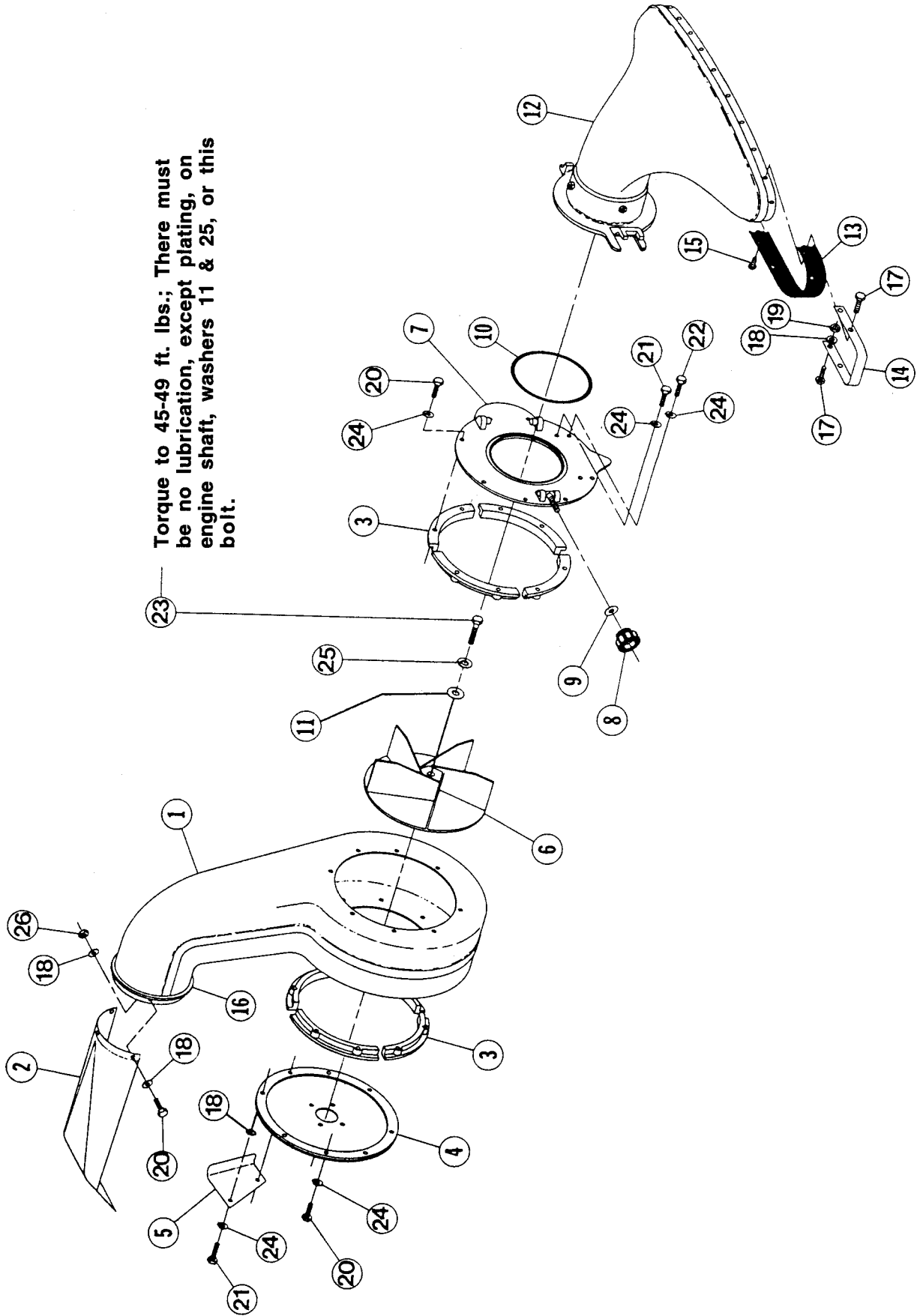
AF-274

CHASSIS & DRIVE ASSEMBLY

PARTS LIST

Item	Part No.	Qty.	Description	Item	Part No.	Qty.	Description
1	81-25-B	1	Jack Shaft	45	68-310-B	2	Wheel Assembly
2	84-41-32B	1	Chain, Roller #41-32-P		68-311-B	2	Wheel
3	84-4148.5B	1	Chain, Roller 341-48.5-P		68-312-A	2	Tire 5.30/4.50 x 6
4	74-116-A	2	Bearing Assembly	45A	350258	1	Innertube
5	280-09	1	Woodruff Key #9	46	713004	1	Bolt, Hex Hd. 1/4-20 x 1
6	84-41B20.5	1	Chain, Roller #41-20.5P	47	711544	3	Lockwasher, Spring 1/4
7	88-42-A	1	Bracket Weldment	48	63-304-A	1	Bag Hook
8	90-69	2	Chain & Belt Guard	49	82-159-A	1	Spring Support Bracket
9	75-79-A	2	Knob	50	81-19-D	1	Chassis Weldment
10	54-227-A	4	Spacer	51	90-66	1	Drive Shaft
11	829014	1	Bushing	52	66-138-A	2	Seal Master Bearing
12	80-285-A	1	Bracket	53	81-43-A	1	Spring Bracket
13	93-11	1	Lever Control	54	74-86-A	1	Drive Sheave
14	713002	6	Bolt, Hex Hd. 1/4-20 x 3/4	55	90-44	1	Clutch Bracket
15	82-195-D	1	Chain Guard Weldment	56	711506	13	Flatwasher, Plain 5/16
16	90-73	1	Sprocket	57	711328	1	Nut, Plain Hex 3/8-16
17	90-74	1	Sprocket	58	70-516-12	1	Bolt, Carriage 5/16-18 x 3/4
18	57-110-A	2	Cotter Pin	59	833374	1	Hairpin Cotter
19	SA-1129-B	1	Shifter Rod (incl. items 18, 59, 68, 89)	61	713041	1	BLT-HH 3/8-16 x 3/4
20	83-29-A	1	Shifter Plate	62	713000	7	Bolt Hex Hd. 1/4-20 x 1/2
21	711373	6	Nut, Hex Lock 1/4-20	63	713029	2	Bolt, Hex Hd. 5/16-18 x 1 1/2
22	711505	11	Washer, Special	64	711391	1	Nut, Hex Lock (thin) 3/8-16
23	76-36-A	1	Washer, Special	67	81-42-A	2	Spacer
24	90-119	1	Brake Lever	68	711615	1	Roll Pin
25	83-35-A	1	Spacer	69	713025	1	Bolt, Hex Hd. 5/16-18 x 5/8
26	60-416-10	1	Bolt, Hex Hd. 5/16-18 x 3/4	70	59-29-A	1	Spacer
27	711375	4	Nut, Hex Lock 3/8-16	72	82-141-B	1	Adjusting Plate
28	711319	1	Nut, Plain Hex 5/16-18	73	80-44-A	2	Clevis Pin
29	82-134-B	1	Shift Rod Weldment	74	711810	2	Cotter Pin
30	SA-857-A	1	Transmission	75	80-32-A	1	Bracket & Nut
31	48-277-A	2	Key, 3/16 Square	76	713042	4	Bolt, Hex Hd. 3/8-16 x 1
32	713026	16	Bolt, Hex Hd. 5/16-18 x 3/4	77	81-166-A	4	Washer, Special
33	82-20-C	1	Transmission Bracket Brace	78	81-44-A	1	Nylon Pulley
34	711374	16	Nut, Hex Lock 5/16-18	79	81-45-A	1	Spacer
35	82-15-D	1	Transmission Bracket	80	90-120	1	Spring
36	90-75	1	Jackshaft bracket	81	72-516-12	5	Bolt, Hex Hd. 3/8-16 x 1
37	80-193-A	1	Spring	82	713069	1	Bolt, Hex Hd. 1/2-20 x 5 1/2
38	711545	9	Lockwasher, Spring 5/16	83	711377	4	Nut, Hex Lock (thin) 1/4-20
39	713027	3	Bolt Hex Hd. 5/16-18 x 1	84	66-139-A	4	Flange Bearing
40	SA-816-B	2	Bearing Assembly	85	81-40-A	1	Bearing Spacer
41	713028	1	Bolt, Hex Hd. 5/16-18 x 1 1/4	86	363-816	1	Nut, Hex Lock 1/2-20
42	SA-1243-C	1	Differential Assembly	87	88-56-B	1	Spacer Tube
43	711420	5	Nut Hex 5/16	88	88-49-A	3	Washer
				89	829010	3	WSR-Flat 3/8
				90	712310	2	WSR-Flat 1/2
				91	832015	1	Spacer

HOUSING ASSEMBLY



Torque to 45-49 ft. lbs.; There must be no lubrication, except plating, on engine shaft, washers 11 & 25, or this bolt.

HOUSING ASSEMBLY

PARTS LIST

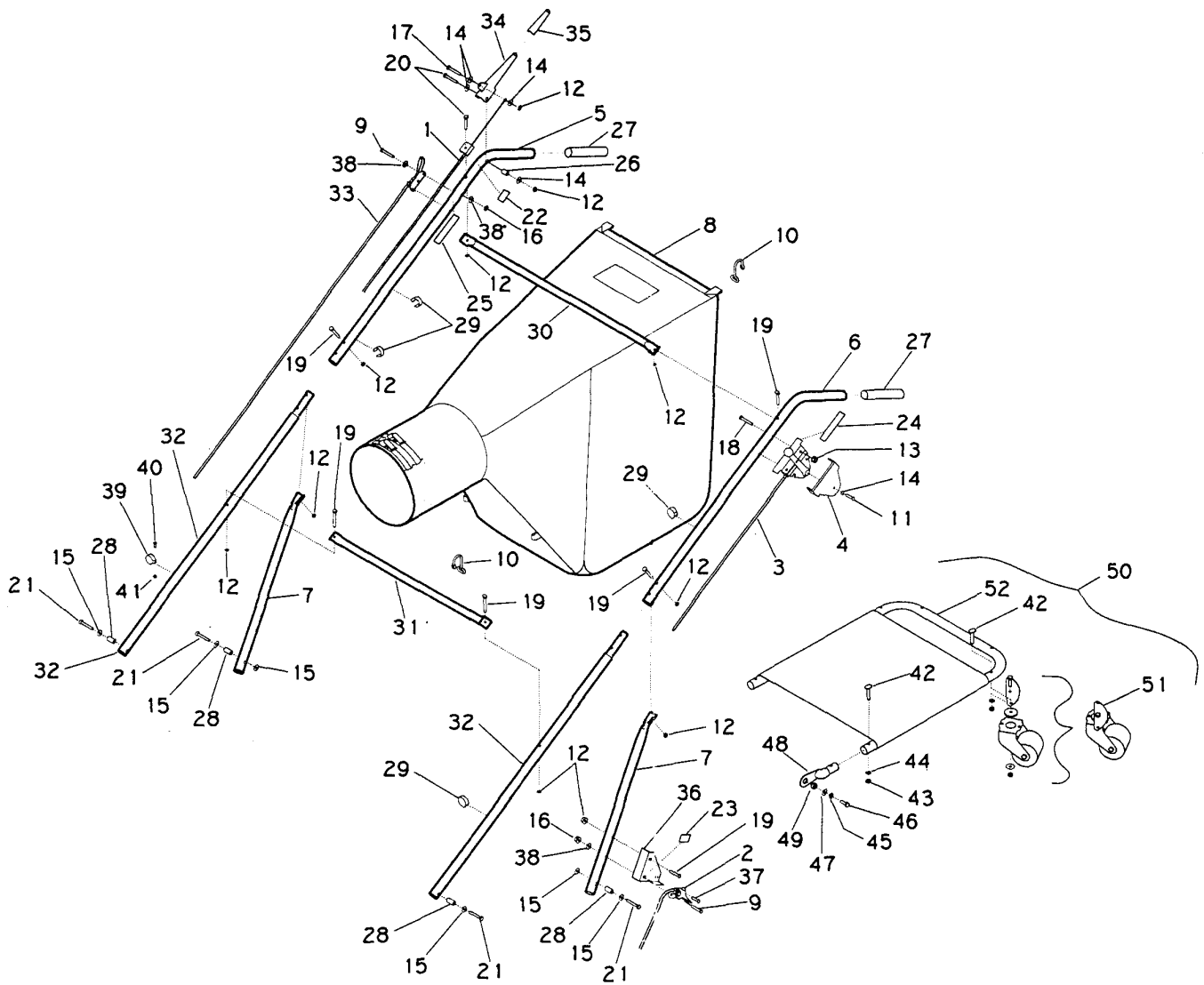
Item	Part No.	Qty.	Description
1	70-103-F	1	Housing Assembly
2	85-61-D	1	Spin-Pak
3	64-78-C	8	Anti-Wrap Segment
4	84-372-C	1	Back Plate & Gasket, 8 HP
5	72-241-B	1	Heat Shield, 8 HP
6	72-175-D	1	Fan Wheel, 8 HP
7	SA-1389-D	1	Front Cover Assembly
*8	80-29-A	1	Adjusting Knob
*9	711509	1	Flatwasher, Plain 1/2
*10	63-190-A	1	O-Ring Gasket
11	82-138-B-3	1	Special Washer, 8 HP
12	MA-251-D	1	30" Intake Housing Assembly
**13	73-67-D	1	Skirt
**14	62-98-C	2	Guard
**15	80-332-A	15	Fastener
16	85-59-C	1	Retaining Ring
17	713002	8	Bolt, Hex Hd. 1/4-20 x 3/4
18	711505	18	Flatwasher, Plain 1/4
19	711377	8	Nut, Hex Lock (thin) 1/4-20
20	713003	14	Bolt, Hex Hd. 1/4-20 x 1
21	713004	4	Bolt, Hex Hd. 1/4-20 x 1 1/4
22	713005	2	Bolt, Hex Hd. 1/4-20 x 1 1/2
***23	60-716-20	1	Bolt, Hex Hd. 7/16-20 x 1 1/4 Grade 5
24	711544	16	Lockwasher, Spring 1/4
25	711548	1	Lockwasher, Spring 7/16
26	711373	4	Nut, Hex Lock 1/4-20

* Items 8, 9 and 10 are supplied with item 7, but may be purchased separately.

** Items 13, 14 and 15 are supplied with item 12, but may be purchased separately.

** Items 13 and 15 purchased as kit MA-614-C.

*** Item 23, torque to 45 to 49 ft. lbs.



Item	Part No.	Qty.	Description
42	69-416-24	6	1/4-20 x 1.50 Contour Head Bolt
43	711316	6	1/4-20 Hex Nut
44	711544	6	1/4 Helical Washer
45	711545	2	5/16 Helical Washer
46	713027	2	5/16-18 x 1.00 Hex Bolt
47	76-36-A	2	Special Washer
48	81-116-A	2	Tubing End Cap
49	81-120-A	2	Spacer
50	MA-471-D	1	Bag Platform Assembly (with hardware)
51	SA-1021-B	1	Caster and Plate Assembly
52	SA-1023-C	1	Frame and Bag Platform

LIMITED WARRANTY

The Parker Sweeper Company warrants to the original purchaser/user that this product is free from defects in workmanship and materials under normal use and service for a period of two years from date of purchase. In addition, Parker Sweeper Company will, at its option, honor labor warranty claims for the first 12 months from date of sale, provided such claims are submitted through and approved by factory authorized repair stations. Parker Sweeper Company will, at its option, repair or replace without charge, except for transportation costs, parts that fail under normal use and service when operated and maintained in accordance with the applicable operation and instruction manuals.

This warranty does not apply to normal wear, or to items whose life is dependent on their use and care, such as belts, cords, switches, hoses, rubber parts, electrical motor components or adjustments. Parts not manufactured by Parker Sweeper Company such as engines, batteries, battery chargers, hydraulic pumps, and tires are covered by and subject to the warranties and/or guarantees of their manufacturers. Please contact Parker Sweeper Company for procedures in warranty claims against these manufacturers.

Special warning to purchaser — Use of replacement filters and/or prefilters not manufactured by Parker Sweeper Company or its designated licensees, will void all warranties expressed or implied.

A potential health hazard exists without exact original equipment replacement.

All warranted items become the sole property of Parker Sweeper Company or its original manufacturer, whichever the case may be.

Parker Sweeper Company disclaims any implied warranty, including the warranty of merchantability and the warranty of fitness for a particular purpose. Parker Sweeper Company assumes no responsibility for any special, incidental or consequential damages.

This limited warranty is applicable only in the U.S.A. and Canada, and is extended only to the original user/purchaser of this product. Customers outside the U.S.A. and Canada should contact their local distributor for export warranty policies. Parker Sweeper Company is not responsible for costs or repairs performed by persons other than those specifically authorized by Parker Sweeper Company. This warranty does not apply to damage from transportation, alterations by unauthorized persons, misuse or abuse of the equipment, use of non-compatible chemicals, or damage to property, or loss of income due to malfunctions of the product.

If a difficulty develops with this machine, you should contact the dealer from whom it was purchased.

This warranty gives you specific legal rights, and you may have other rights which vary from state to state. Some states do not allow the exclusion or limitation of special, incidental or consequential damages, or limitations on how long an implied warranty lasts, so the above exclusions and limitations may not apply to you.



A Minuteman International Company

World Headquarters

Minuteman International, Inc.
111 South Rohlwing Road
Addison, Illinois 60101

Minuteman Canada, Inc.
2210 Drew Road
Mississauga, Ontario
L5S 1B1

(630) 627-6900
FAX (630) 627-1130

(905) 673-3222
FAX (905) 673-5161

988221
Printed in U.S.A.