



Electronic Service Manuals

This electronic document is provided as a service to our customers. We do not create the contents of the information contained in this document. Should you have detailed questions pertaining to the information contained in this document, you may contact Michco, or the manufacturer which provided the original information in this electronic deliverable. Michco's only part in this electronic deliverable was the electronic assembly process. By providing this manual on line we are not guaranteeing parts availability.

You may contact Michco through the following methods:

Phone (517) 484-9312 or (800) 331-3339

2011 N. High St. -- Lansing, Michigan -- 48906

Fax: (517) 484-9836

Email: CustServe@Michco.com

Web site: www.Michco.Com

Parts Web site: www.FloorMachineParts.Com

Order Parts on Line at:

www.FloorMachineParts.Com

Directly to Parts & Service:

By Email: **Shop@Michco.com**

By Fax: (517) 702-2041

By Voice: Use numbers above.

Serving the Cleaning Industry Since 1922

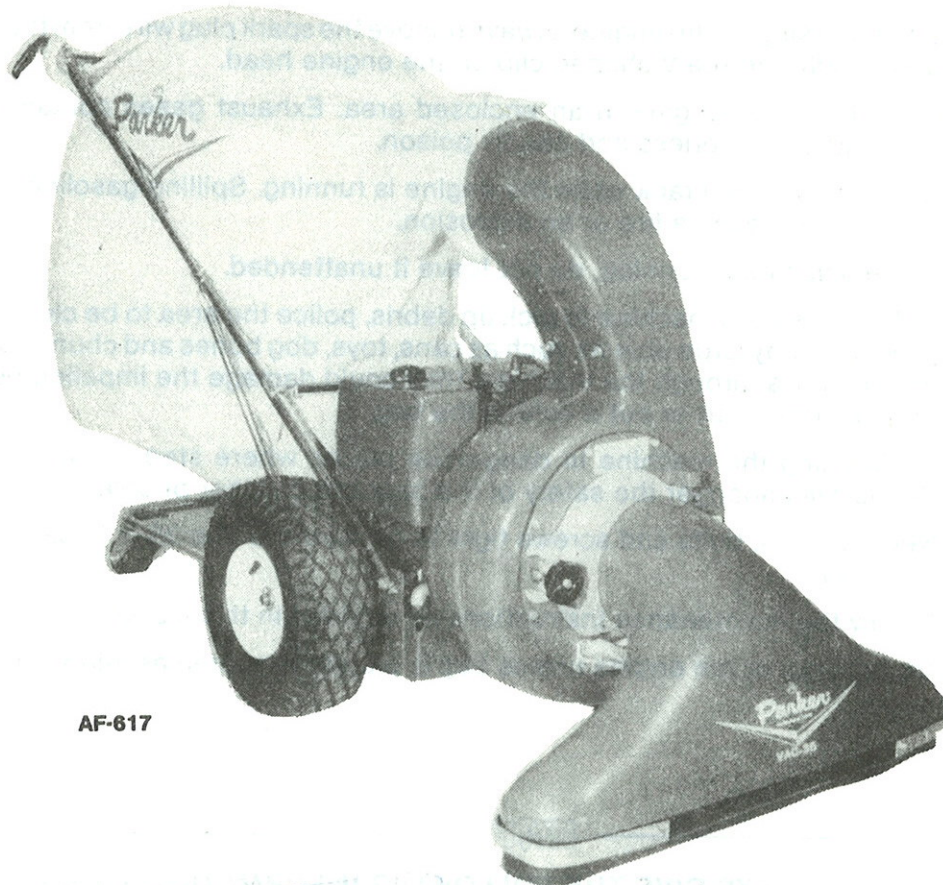
Notice: All copyrighted material remains property of original owners, all trademarks are property of respective owners. Manuals are subject to Manufacturer's reproduction limitations. Originals or reproductions were provided by manufacturers through a request. We make no warranty as to the correctness of information provided in this document and you assume all risk. By placing these manuals on line we are not declaring our corporation to be an manufacturer authorized dealer or provider, please check our web site for authorized manufacturers we represent.

OWNER'S GUIDE



VACUUM SWEEPER VAC-35 GASOLINE and LP ENGINE

MODEL NO. PV-8608-K, PV-8608-K-LP



AF-617

**READ THESE INSTRUCTIONS
BEFORE SETTING UP AND OPERATING MACHINE**

**BE SAFE. PROTECT YOUR FAMILY, YOUR FRIENDS, YOURSELF.
OBSERVE ALL SAFETY INSTRUCTIONS.**

PARKER SWEEPER COMPANY

Box 1728

Springfield, Ohio 45501-1728

TO THE OWNER

These instructions were written to assist you in the assembly and operation of your Vac-35. **READ THE INSTRUCTIONS** thoroughly **BEFORE** attempting to assemble and operate the machine so that you are familiar with the complete procedure and the safety precautions.

RULES FOR SAFE OPERATION



The following safety precautions are suggested to prevent damage to the equipment or injury to the operator or nearby persons.

1. Do not allow anyone to operate the Vac-35 without proper instructions.
2. Do not permit children to operate the Vac-35.
3. Do not sweep too close to fire. Ingesting hot ashes will ignite the bag.
4. Stop the engine before reaching into the intake nozzle or discharge chute to dislodge sticks or other debris.
5. Stop the engine before attempting to make any adjustment or performing any maintenance work on the Vac-35.
6. When working on the engine, always remove the spark plug wire from the engine and attach it to the V shaped clip on the engine head.
7. Do not run the engine in an enclosed area. Exhaust gases contain carbon monoxide, an odorless and deadly poison.
8. Do not fill the fuel tank while the engine is running. Spilling gasoline on a hot engine may cause a fire or an explosion.
9. While machine is running, do not leave it unattended.
10. Before using the machine to pick up debris, police the area to be cleaned first, picking up any large objects such as cans, toys, dog bones and chunks of wood. If these pass through the machine, they could damage the impeller, bend the engine crankshaft or put a hole in the bag.
11. Avoid using the machine in dangerous places where steep slopes or loose debris will endanger the safety of the operator or other people.
12. Keep all nuts, bolts and screws tight to be sure the Vac-35 is in safe working condition.
13. Follow the maintenance instructions as outlined in this manual.
14. Do not start or run engine unless bag is properly secured as injury may result.

IMPORTANT

ALWAYS GIVE THE FOLLOWING INFORMATION WHEN ORDERING REPAIR PARTS:

- | | |
|-------------------------------|------------------------|
| 1. Part Number (Not Ref. No.) | 3. Description of Part |
| 2. Quantity Needed | 4. Model No. of Vac-35 |

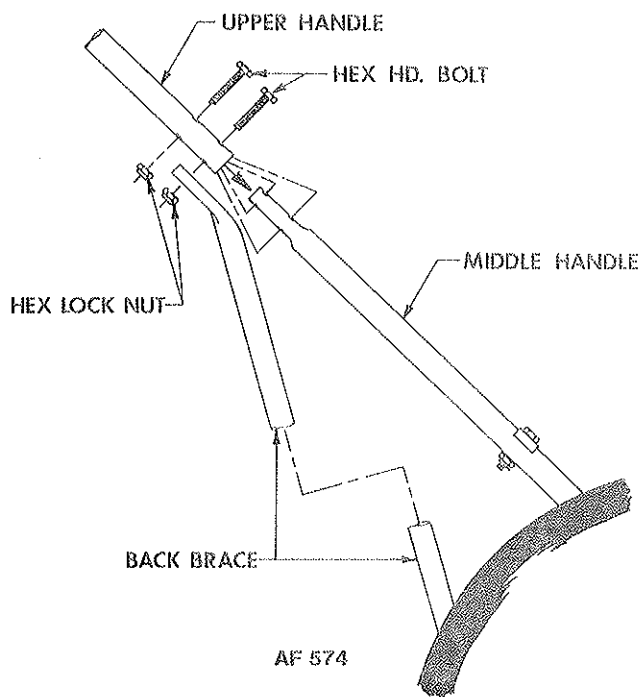
If unable to obtain parts locally, write down above information and send to:
PARKER SWEEPER CO., BOX 1728, SPRINGFIELD, OHIO 45501

Your unit is right hand (R.H.) or left hand (L.H.) as you stand behind it.

ASSEMBLY INSTRUCTIONS

YOUR SAFETY IS OUR CONCERN. READ ALL SAFETY RULES AND OPERATING INSTRUCTIONS BEFORE ATTEMPTING TO OPERATE THIS EQUIPMENT. FAILURE TO FOLLOW SAFETY RULES AND OPERATING INSTRUCTIONS MAY RESULT IN SERIOUS INJURY.

1. The Vac's covered by this owners guide are shipped complete in one box. Follow all instructions on assembly very carefully. Whenever a difference in instructions occurs either a separate instruction or an "Explanation Note" will be given.
2. Unpack Nose Cone, Spin-Pak, Handle Assembly, Bag Platform and Filter Bag. All hardware is on the unit in its proper location. If something is missing, notify the factory or a local distributor to obtain parts needed. **DO NOT** discard any of the cartons or inner packing until machine is completely assembled.
3. Tip box over so blower housing is on top of engine. Pull unit out of box and stand it up. Move box out of the way. Whenever the terms Left and Right or L. and R. are used herein, it should be understood to mean from a position standing behind the unit facing in a forward direction.
4. Lift handles until the back braces can be assembled to the bolts assembled in step 3. Assemble hex lock nuts. **Do Not Tighten.**
5. Align the upper holes in both the upper and middle handle assemblies. Assemble the remaining two hex hd. bolts and hex lock nuts. **Do Not Tighten.**
6. Check alignment of handle assembly. The hex lock nuts have been left loose to allow movement between the holes and the bolts. Do not bend tubing to accomplish proper alignment. Once handles are aligned tighten all hex lock nuts.
7. Nuts should be tightened enough that at least two of the bolt threads extend through the nut. It may be necessary to collapse the tubing **SLIGHTLY** to accomplish this.

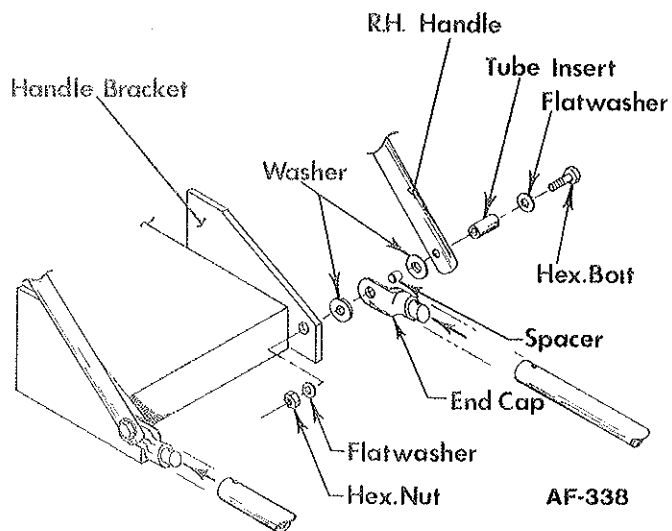


Handle Assembly

1. Remove the hex hd. bolts and hex lock nuts from the bottoms of the upper handle.
2. Place upper handle assembly over the ends of the middle handle assembly.
3. Align the lower holes in both the upper and middle handle assemblies. Replace a hex hd. bolt, removed in step 1, to each of the lower holes.

Bag Platform Attachment

1. To attach bag platform, insert the end cap into open end of bag platform as shown.
2. Secure bag platform to end cap with contour bolt, hex nut and lockwasher. Bag platform should stay in place while sweeping.

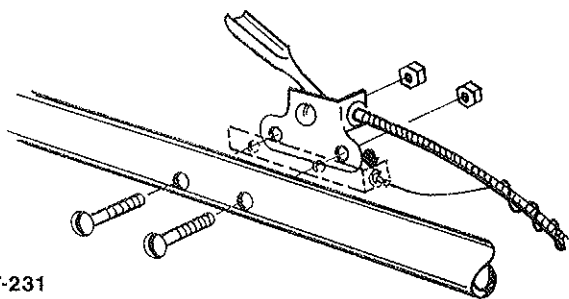


Throttle Hook-Up

1. To install throttle control assembly and attach safety stop switch wire (where applicable), remove the throttle control assembly from the lower right hand handle.
2. Straighten the throttle cable and run it up the left hand handle and attach to handle. Avoid placing sharp bends in the throttle cable.

OBSERVE SAFETY RULES AT ALL TIMES. DON'T TAKE CHANCES!

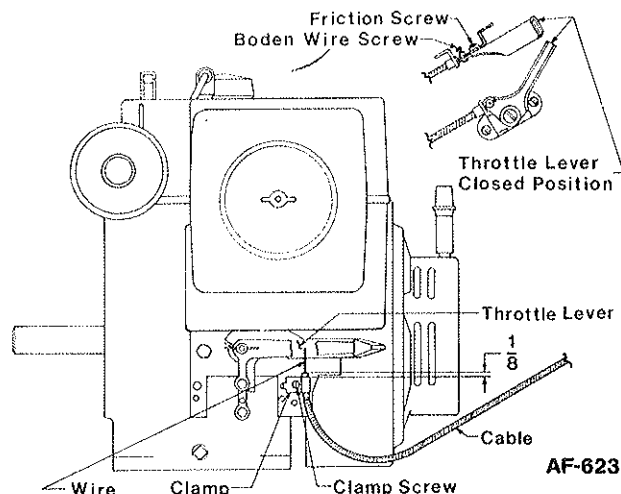
ASSEMBLY INSTRUCTIONS



AF-231

3. Hook throttle control to the handle using the two oval head screws and two nuts furnished.
4. Disregard stop switch assembly shown in AF-231, as this Kohler engine has the stop switch integral with the throttle control. Move throttle control fully forward to stop the engine.
5. Insert "Zee" shaped end of Boden Wire into the Throttle Plate as shown with the engine throttle closed.
6. Loosen clamp screw on engine Throttle Control Lever Bracket and place cable under left side of the clamp.
7. With about 1/8 inch of cable extending beyond the clamp, tighten clamp screw.
8. With the Throttle Plate on the engine tightly closed, the Throttle Control on the L.H. Handle should also be closed.
9. If the Throttle Control on the handle requires adjustment, loosen the Boden Wire Screw, adjust the Throttle Control and tighten the screw securely.

NOTE: If throttle does not stay open due to vibration of machine, tighten friction screw on lever assembly until there is sufficient friction to hold throttle open.



IMPORTANT

WARNING: The engine contains NO OIL. Read the Engine Instruction Manual carefully before operating the VAC-35. Be sure you know how to start and stop the engine before proceeding further. Do not start the engine until all assembly is finished.

To Assemble Spin Pak®

1. Remove the hex hd. bolts, lock nuts, and flatwashers, from the three upper holes used to secure the retaining ring to the blower housing. DO NOT remove the bottom bolt or the retaining ring from blower housing.
2. Align the holes in the Spin Pak® with the three upper holes in the retaining ring and blower housing. Replace hardware removed in Step 1 and tighten.

Attaching Dust Bag

1. Attach the dust bag to the sweeper by placing the loops over the handles.
2. Slip the neck of the dust bag over the Spin Pak® until the tie strap can be pulled tight around the housing neck just over the bead on the Spin Pak®. The bead must be covered.
3. Attach Bag Hooks to the front Bag Straps and hook over the lower Crossbar. **IMPORTANT:** Failure to attach the front Bag Straps to the lower crossbar will cause premature wear of bag around the bottom (as it drags from overhanging the bag platform) and around the neck at the Spin-Pak®. The Spin-Pak® may also break prematurely due to excessive weight from the Bag.

Attaching Intake Housing

1. Insert the hinge bosses, on collar of intake housing, behind the hinge extension on front cover assembly.
2. Swing intake housing to lay flat against front cover assembly.
3. Secure by placing flatwasher and adjusting knob, on pivot bolt, over the collar of intake housing and tightening adjusting knob.

WARNING

Make a thorough inspection to see that all fastenings are tight and all parts are properly installed. DO NOT start engine without Intake and Dust Bag in place. See instructions for installing Dust Bag.

If engine is started without intake attached, serious injury may result by drawing clothing or parts of the body into the fan.

If engine is run without dust bag, small stones or other objects may be picked up and propelled at operator or bystanders through the unprotected opening causing serious injury.

OBSERVE SAFETY RULES AT ALL TIMES. DON'T TAKE CHANCES!

ASSEMBLY INSTRUCTIONS (cont.)

READ SAFETY & OPERATING INSTRUCTIONS BEFORE OPERATING EQUIPMENT

L.P. FUEL TANK HOOK-UP

WARNING: Proper assembly of replacement parts is the responsibility of the owner or mechanic doing the work. Parker Sweeper Company will not recommend or supply replacement parts for liquid propane units. Parts listed on repair parts list are for reference only. As technology continues to change, the manufacturer should be consulted for recommendation or repair parts and instructions for their assembly.

NOTE: Only authorized L.P. mechanics familiar with current NFPA regulations should attempt to repair or replace L.P. parts. Failure to comply with this requirement could result in damage or serious, fire, explosion or asphyxiation.

1. If the Vac-35 has been purchased with Liquid Propane Fuel, then it must have a Vapor Withdrawal Fuel Tank. The unit is designed to take either a 14-pound or 20-pound Fuel Tank. These are not furnished as standard equipment. The 20-pound tank only can be ordered separately from Parker Sweeper (item 11 will be included). If obtained from a local L.P. fuel supplier, he will need to install this street EII which always remains with the tank.

2. To install, place the fuel tank in the cradle shown as item 13. The hold-down strap (item 14) will fit either size tank. When installing, the small hole in the tank collar must fit over the vertical pin to meet government regulations for L.P. fuel tanks. This orients the emergency relief valve so that any fuel discharged due to excess tank pressure will be directed UPWARD.
3. After tank is secured, remove the male half (item 17) from the quick disconnect coupling and hose assembly; thread it onto tank street EII (item 11).
4. Attach the hose assembly to the tank by threading the quick disconnect coupling (item 16 to item 17).
5. See Operating Instructions for procedure to be used in starting engine with L.P. fuel.

NOTE: See L.P. assembly drawing for reference on 1 through 5.

OPERATING INSTRUCTIONS

NOTE: FAILURE TO OBSERVE SAFETY INSTRUCTIONS MAY RESULT IN SERIOUS INJURY.

LIQUID PROPANE FUEL. (*Available only on Kohler Engine.*) When a Vac-35 is equipped for liquid propane fuel, a slightly different starting technique is required. Follow steps below to start L.P. engine.

CAUTION: When installing fuel tanks, new or refills, be sure they comply with the following specifications:

1. ICC-4BA240. W.P. 240 PSI.
2. Mounted horizontally — vapor withdrawal.
3. 20# Propane 10" dia. collar.

These specifications are also printed on the fuel tank support.

IMPORTANT: Check your local, state and federal regulations when using liquid propane fuel to be sure you comply with all requirements for the conditions covering its use.

TO START LIQUID PROPANE UNIT:

1. Open fuel line valve at tank.
2. Set throttle in closed position.
3. Pull starter rewind cable 3 or 4 times. This will open automatic shut-off valve allowing gas to enter engine. Engine may start at this time. If not, open throttle 1/4 to 1/2 and pull starter rewind cable 3 or 4 more times to start engine. Open throttle to full position after engine starts.

4. If engine fails to start, carburetor may need adjusting. Turn in main fuel jet until it is closed. Back out 1 1/4 turns. This should be the position to allow the engine to start. After engine has been warmed up, adjust main jet for final running position by turning slowly in either direction until the engine performance is satisfactory.
5. When stopping engine, shut off fuel at tank and run engine until it stops. This removes pressure from the valves and regulators and lengthens their life. Also, this reduces danger from gas leakage while engine is not used. This procedure is mandatory under National Fire Protection Assoc. Document 58, "Storage and Handling Liquid Petroleum Gases, 1979."
6. Extra filled tanks should be stored on steel rack with tank horizontal and arrow and relief valve up.

**SAFETY IS IMPORTANT!
DO NOT IGNORE IT — OBSERVE IT!
BE SAFE**

OPERATING INSTRUCTIONS

READ SAFETY & OPERATING INSTRUCTIONS BEFORE OPERATING EQUIPMENT

**SAFETY IS IMPORTANT!
DO NOT IGNORE IT — OBSERVE IT!
BE SAFE!**

To Start Unit

IMPORTANT: Read the engine manual CAREFULLY before operating the VAC-35. The stop switch is located on the left side handle.

Before starting the engine read and understand the following:

1. Be sure the engine crankcase is filled with the proper type and amount of oil.
2. Spin Pak® is in place.
3. Dust Bag or Discharge Hose is in place.
4. Intake Housing or Hose Kit is attached to the Fan Housing.

WARNING: When refueling, care should be taken not to spill fuel on hot engine. This could cause the fuel to ignite, resulting in serious injury to operator or damage to unit.

Servicing and Operating Instructions.

Refer to Engine Manufacturer's Service Manual. Careful attention to care of air cleaner and crankcase lubrication instructions will insure longer engine life.

KEEP ENGINE CLEAN.

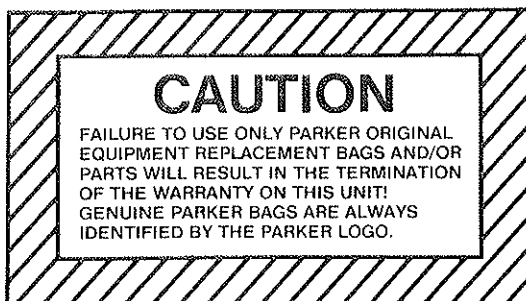
Lubrication

1. Lubricate the wheel bearings and wheel axle on the caster once a week if used daily. A few drops of oil applied to the throttle control cable and wire will keep it operating smoothly.

NOTE: Refer to engine operating instructions for proper lubrication of the engine.

Dust Bag Care

2. Keep the Dust Bag clean at all times.



3. The efficiency of this unit depends on the breathing capacity of the Dust Bag. Under extremely dusty conditions the bag should be emptied and cleaned frequently. Always empty and clean bag before storing after use. Debris allowed to remain in the bag may cause spontaneous combustion, resulting in an explosion or fire.

4. Heavy concentration of sand and gravel should be avoided. These materials are extremely abrasive, and while the VAC-35 will handle moderate amounts of these materials, it is not designed for heavy applications. Because these materials are extremely heavy, only small amounts should be allowed to collect in the bag because large amounts cause poor handling and difficulty in pushing. The VAC-35 is capable of picking up empty tin cans and blocks of wood, but it was not intended for this type of service, since tremendous stresses build up as these pieces pass through the impeller. Treat your VAC-35 with reasonable care and it will repay you with long, trouble-free service.

5. The VAC-35 will handle most common kinds of debris found around industrial plants, commercial buildings, homes and farms. Acid contaminated materials, magnesium, dust and other DANGEROUS DEBRIS that is considered hazardous should not be handled with the VAC-35 unless approved by a regulating authority considered to be an expert in the handling of such hazardous materials.

DANGER: Improper use of this equipment may result in serious injury.

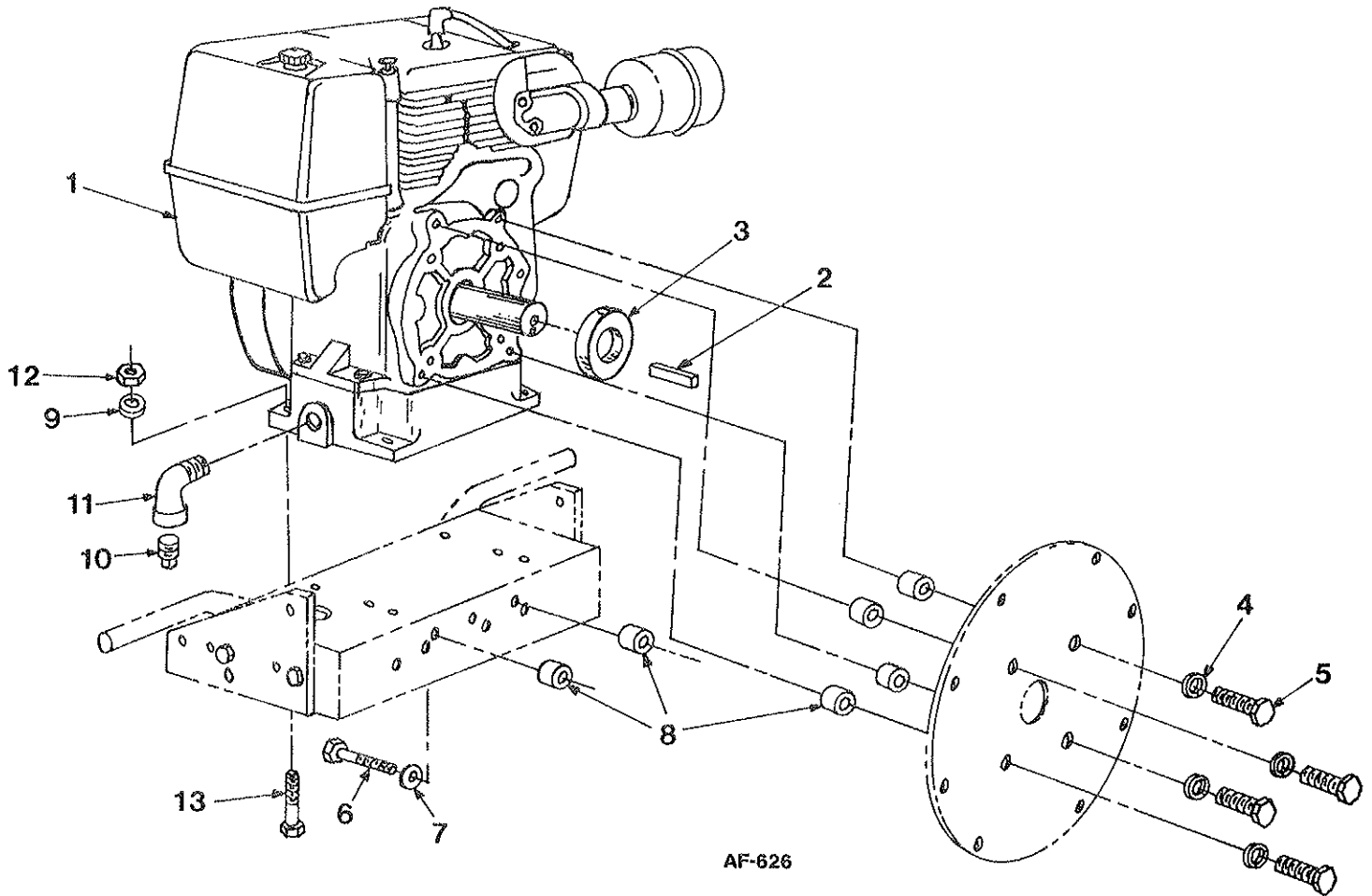
6. When using hose attachment, keep it away from engine exhaust system and other parts of the engine and electric motor that may be hot enough to burn plastic hose.

7. The VAC-35 is equipped with a front adjustable caster which provides any height adjustment of intake housing that is practical. Nuts must be kept tight.

NOTE: It is advisable to use the optional wheel turn kit when sweeper is used primarily for turf sweeping.

NOTE: FAILURE TO OBSERVE SAFETY INSTRUCTIONS MAY RESULT IN SERIOUS INJURY.

ENGINE ASSEMBLY

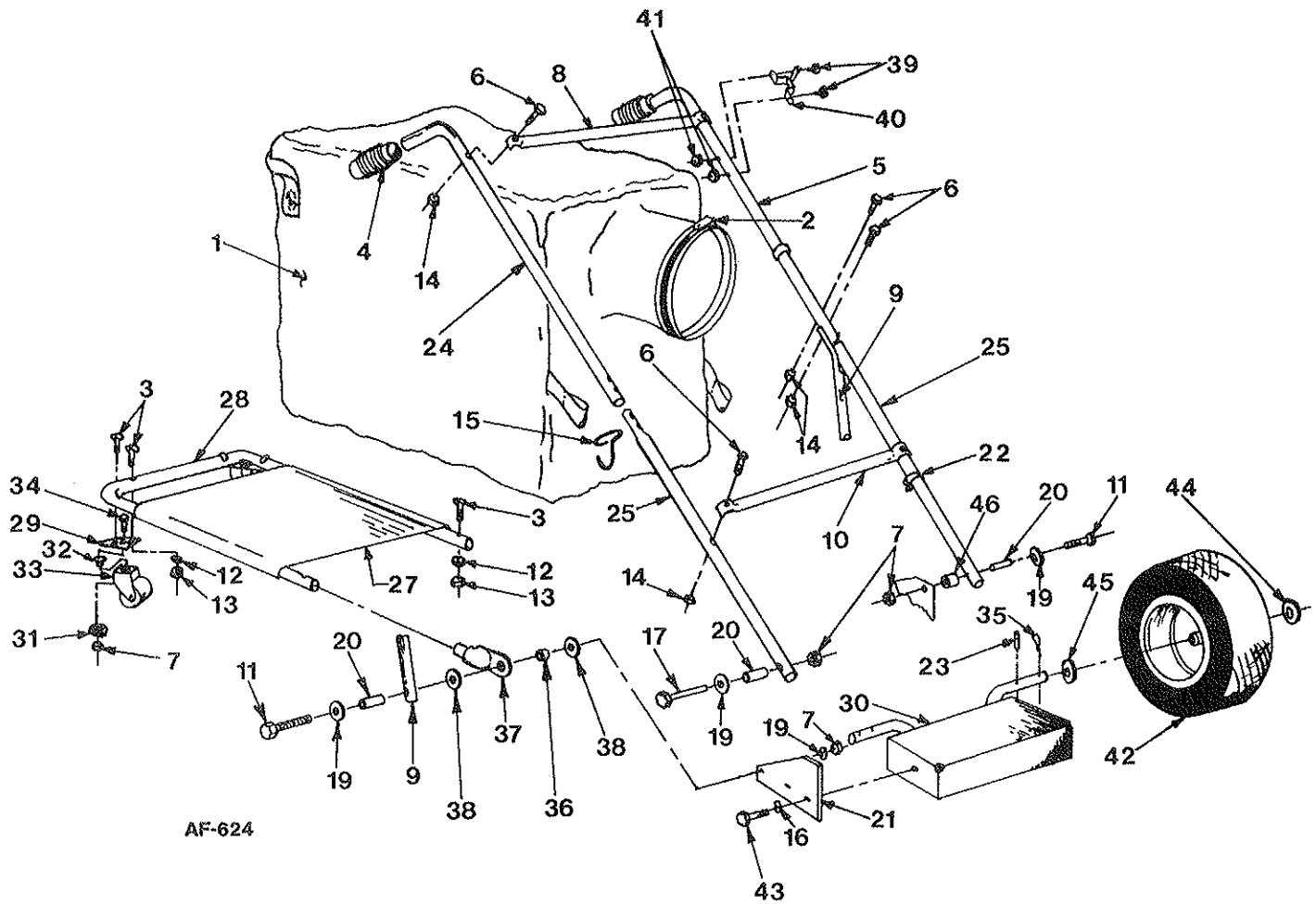


PARTS LIST

Ref. No.	Part No.	Description	PV -8608-K	PV -8608-K
1	**	Engine, Kohler	1	1
2	72-130-A	Fan Key, 1/4 x 1 3/4	1	1
3	62-179-A	Fan Spacer	1	1
4	935-616	Lockwasher, Spring, 3/8	4	4
5	65-616-24	Bolt, Hex Hd. 3/8-16 x 1 1/2	4	4
6	65-416-28	Bolt, Hex Hd. 1/4-20 x 1 3/4	2	2
7	935-416	Lockwasher, Spring, 1/4	2	2
8	79-139-A	Spacer	6	6
9	945-616	Flatwasher, 3/8	4	4
10	*	Pipe Plug, Oil Drain	1	1
11	57-81-A	Street Elbow, 1/2 x 90°	1	1
12	365-616	Nut, Hex Lock, 3/8-16	4	4
13	65-616-20	Bolt, Hex Hd. 3/8-16 x 1 1/4	4	4

*Supplied with engine
**Kohler Model No. M8T

HANDLE ASSEMBLY



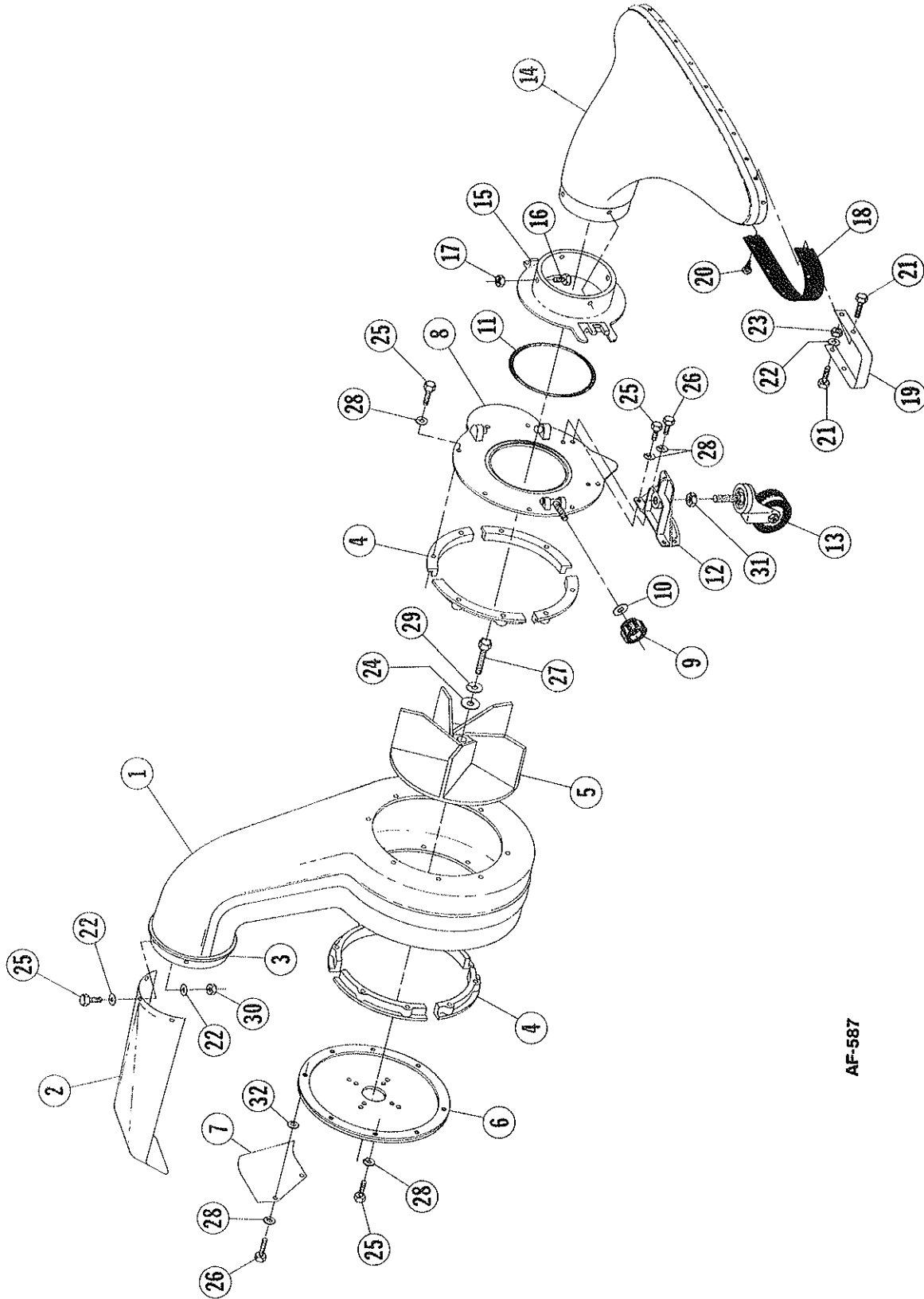
HANDLE ASSEMBLY

PARTS LIST

Ref. No.	Part No.	Description	PV -8608- K	PV -8608- K-LP
1	MA-419	Dust Bag Assembly	1	1
*2	SA-794-B	Strap Assembly	1	1
3	69-416-24	Bolt, Contour Hd. 1/4-20 x 1 1/2	6	6
4	80-232-A	Handle Grip	2	2
5	83-18-C	Handle, Upper L.H.	1	1
6	65-416-24	Bolt, Hex Hd. 1/4-20 x 1 1/2	8	8
7	365-516	Nut, Hex Lock, 5/16-18	6	6
8	81-04-B	Cross Brace, Upper	1	1
9	85-10-C	Back Brace	2	2
10	81-58-B	Cross Brace, Lower	1	1
11	65-516-32	Bolt, Hex Hd. 5/16-18 x 2	3	3
12	935-416	Lockwasher, Spring 1/4	6	6
13	335-416	Nut, Hex Plain, 1/4-20	6	6
14	365-416	Nut, Hex Lock 1/4-20	8	8
*15	63-304-A	Bag Hook	2	2
16	935-516	Lockwasher, Spring, 5/16	4	4
17	65-516-28	Bolt, Hex Hd. 5/16-18 x 1 3/4	1	1
19	945-516	Flatwasher, 5/16	6	6
20	80-238-A	Insert	4	4
21	73-362-C	Handle Bracket	2	2
22	80-276-A	Clamp, Snap-on	2	2
23	67-521-A	Roll Pin .187 x 1	2	2
24	80-321-C	Upper Handle, R.H.	1	1
25	82-245-B	Middle Handle	2	2
26	SA-982-C	Bag Platform (Complete Assembly)	1	1
27	81-117-C	Bag Platform	1	1
28	81-96-B	Frame, Bag Platform	1	1
29	82-02-B	Caster Plate	2	2
30	73-111-C	Chassis Weldment	1	1
31	50-230-A	Washer, Special	2	2
32	78-130-A	Bearing, Caster	2	2
33	SA-962-B	Caster Assembly	2	2
34	65-516-16	Bolt, Hex Hd., 5/16-18 x 1	2	2
35	380-432-20	Cotter Pin	2	2
36	81-120-A	Spacer	2	2
37	81-116-A	Tubing End Cap	2	2
38	76-36-A	Special Washer	4	4
39	515-10-20	Screw, Rd. Hd. 10-24 x 1 1/4	2	2
40	83-25-B-44	Throttle Control Assembly	1	1
41	365-10	Nut, Hex Lock, 10-24	2	2
42	SA-231-B	Wheel Assembly	2	2
43	65-516-12	Bolt, Hex Hd., 5/16-18 x 3/4	4	4
44	945-1216	Flatwasher, 3/4	2	2
45	960-1216	Flatwasher, Thick, 3/4	2	2
46	83-181-A	Spacer	1	1

*Included in MA-419 Dust Bag Assembly

HOUSING ASSEMBLY



AF-587

HOUSING ASSEMBLY

PARTS LIST

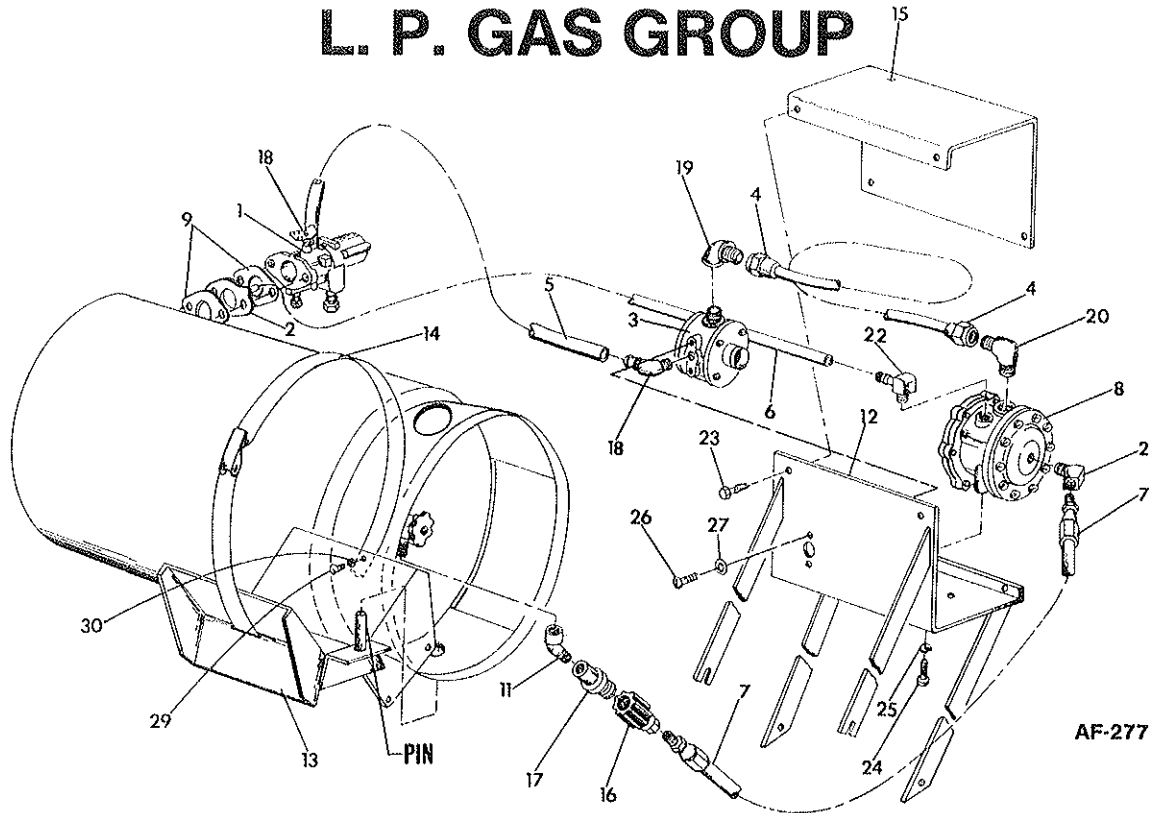
Ref. No.	Part No.	Description	PV -8608- K	PV -8608- K-LP
1	70-103-D	Housing Assembly	1	1
2	85-110-B	Spin Pak®	1	1
3	85-59-C	Retaining Ring	1	1
4	64-78-C	Anti-Wrap Segment	8	8
5	72-175-D	Fan-Wheel	1	1
6	84-346-C	Back Cover & Gasket	1	1
7	72-241-B	Heat Sheild	1	1
8	SA-1389-D	Front Cover Assembly	1	1
*9	80-29-A	• Adjusting Knob	1	1
*10	945-816	• Flatwasher, Plain 1/2	1	1
*11	63-190-A	• O-Ring, Gasket	1	1
12	66-430-C	Caster Bracket	1	1
13	64-71-A	Caster, Stem Type	1	1
14	SA-647-D	Intake Housing Assembly 30"	1	1
**15	63-195-D	• Collar	1	1
**16	65-416-10	• Bolt, Hex Hd. 1/4-20 x 5/8	4	4
**17	369-416	• Nut, Serrated Hex Lock 1/4-20	4	4
18	73-67-D	Skirt	1	1
19	62-98-C	Guard	2	2
20	80-332-A	Fastener	15	15
21	65-416-12	Bolt, Hex Hd. 1/4 - 20 x 3/4	8	8
22	945-416	Flatwasher, Plain 1/4	16	16
23	364-416	Nut, Hex Lock (Thin) 1/4-20	8	8
24	82-138-B-3	Washer, Special	2	2
25	65-416-16	Bolt, Hex Hd. 1/4-20 x 1	16	16
26	65-416-20	Bolt, Hex Hd. 1/4-20 x 1 1/4	4	4
***27	60-716-16	Bolt, Hex Hd. 7/16-20 x 1	1	1
28	935-416	Lockwasher, Spring 1/4	16	16
29	935-716	Lockwasher, Spring 7/16	1	1
30	365-416	Nut, Hex Lock 1/4-20	4	4
31	340-1216	Nut, Hex Jam 3/4-10	1	1
32	54-277-A	Spacer	2	2

*Items 9, 10 & 11 are supplied with item 8 but can be purchased separately.

**Items 15, 16 & 17 are supplied with item 14 but can be purchased separately.

***Item 27; 7/16 Bolt — 55 to 59 ft. lbs.

L. P. GAS GROUP



NOTE: All parts listed are under the manufacturers' name and part number. Replacement parts should be purchased directly from each company listed with a complete description of the part and part number. Addresses of manufacturers who stock parts are listed on the page titled Warranty Information. Parts listed under the "Standard Parts" can be purchased from most hardware stores.

Ref. No.	Part No.	Qty.	Description	Ref. No.	Part No.	Qty.	Description
Garretson Parts				Rego Dist. Parts			
1	220-0118	1	Carburetor	16	7141-F	1	Connector, Safety Check, Female, 1/4-18, 400 PSI
2	180-02	1	Idle Plate	17	7141-M	1	Connector, Male, Safety Check, 3/8-18, 400 PSI
3	074-131	1	Regulator, Pressure MD #S2	Standard Parts			
4	491-12	1	Vapor Hose, Fuel Line, 12" Lg.	18	—	2	1/4 NPT Male x 90° Hose Barb
Dayco Corporation Parts				19	—	1	Street 90° Elbow, 5/8-18 x 1/4-18
5	6428-C	1	Fuel Line Carburetor, 16" Lg., Tubing	20	—	1	Male 90° Elbow, 3/8 Tube x 1/4 Pipe Thread
6	6428-C	1	Vacuum Line, 24" Lg., Tubing	21	—	1	Street Elbow 45°, 1/4-18 NPT
Weatherhead Company Part				22	—	1	Male 1/8 NPT x 1/4 Hose Barb
7	H-368-5	1	Fuel Line Inlet, 24" Lg.	23	72-416-10	4	Bolt, Self-Tapping Hex. Hd., 1/4-20 x 5/8
A. J. Industries Part				24	65-416-12	2	Bolt, Hex. Hd., 1/4-20 x 3/4
8	VFF-30	1	Fuelock, Vacuum and Filter	25	935-416	2	Lockwasher, Spring, 1/4
Kohler Company Parts				26	504-1032-8	2	Screw, Rd. Hd., 10-32 x 1/2
9	210223	2	Gasket Carburetor	27	936-10	2	Lockwasher, Int. Tooth #10
Imperial-Eastman Part or Equivalent				29	515-10-6	1	Screw, Rd. Hd., 10-32 x 3/8
11	124-13	1	Street Elbow, Brass, 3/8 x 45°, 3000 lbs. Test	30	346-10	1	Speed Nut, #10
Parker Sweeper Company Parts							
12	74-142-C	1	Regulator Bracket Weldment				
13	65-565-C	1	Tank Bracket Weldment				
14	80-278-B	1	Strap Weldment				
15	85-63-C	1	Regulator Cover - Silkscreen				

WARRANTY INFORMATION

Parker Sweeper Company warrants each new piece of equipment manufactured under its name except engines, transmissions, differentials and regulators where applicable to be free from defects in materials and workmanship under normal use and service. Parker Sweeper Company's obligation is limited to repair or replacement, at its option for one (1) year (ninety (90) days for commercial service) from date of purchase.

If trouble should occur, please contact the companies listed, giving them all information: Name of unit purchased from company (Parker VAC PV-8608-K, etc.), problem with part; when unit was purchased; model number of engine, etc., and your complete return address complete with zip code. Failure to provide complete information will result in unnecessary delay of repair and return of unit. Please contact the following companies that supply Parker Sweeper Co. with parts. Contact the company directly at the address listed if any problems should occur.

All parts listed are under the manufacturer's name and part number. Replacement parts should be purchased directly from the company listed with a complete description of the part and part number.

Parts listed under the Standard Parts can be purchased from most hardware stores.

Proper assembly of replacement parts is the responsibility of the owner or mechanic doing the work. Parker Sweeper Company warranty only applies to the original purchased unit. Under no circumstances does the warranty extend beyond the original time specified from date of purchase.

ENGINE

Kohler Co.
Kohler, Wisconsin 27249

L.P. PARTS:

Garretson Equipment Co.
P.O. Box 111
Mt. Pleasant, Iowa 52641
Dayco Corporation
333 W. Frist St.
Dayton, Ohio 45402
Weatherhead Co.
300 E. 131 St.
Cleveland, Ohio 44108
A.J. Industries, Inc.
Impco Division
16916 Gridley Place
Cerritos, California 90701
Rego Dist.
5870 N. Rogers Ave.
Chicago, Illinois



HOW TO ORDER REPAIR PARTS

NOTE: When ordering service parts for any model VAC, follow the instructions listed below. By so doing, you will be assured of receiving the correct part in the shortest possible time.

1. Give the model and serial number found on the back of fan housing or back of chassis on the unit.
2. Write the complete part number as well as the description of the part, and quantity of part required.
3. Whenever the terms "left and right, or L and R" are used herein, it should be understood to mean from a position facing in direction of forward travel.

OPTIONAL ACCESSORIES

NOTE: Accessory No. and Price List can be obtained from a local distributor.

24" Intake Housing: For sweeping in narrow aisles or in areas where heavier objects are to be collected.

36" Intake Housing: Ideal for sweeping lighter weight debris and in larger, open areas.

Discharge Hose Kit: Attaches to exhaust port for leading debris into truck, container, etc.

Lumite® Bag: 10 cu. ft. capacity, polypropylene material. Won't fade, shrink, mildew or rot. Use when gathering damp or wet material.

4. Give detailed shipping instructions, that is: whether shipment is to be parcel post, United Parcel Service, air express, freight or truck.

NOTE: Parker Sweeper Co. is continually striving to improve its products. We must, therefore, reserve the right to make improvements or changes, when it becomes practical and possible to do so, without incurring any obligation to make changes or additions to the equipment previously sold.

Turf Wheel Kit: Wheel Kit with quick individual wheel adjustment. Makes for easy operation over uneven surfaces.

Flip-Gate 30" Nose Cone: Allows convenient and adjustable intake of larger debris and trash.

Hose Attachment 6" Dia.: 15 ft. length overall, fits all VAC-35 models. Attaches to impeller housing for cleaning debris from hard-to-reach areas.

Hose Attachment 4" Dia.: 15 ft. length overall, fits all VAC-35 models. Attaches to impeller housing for cleaning debris from hard-to-reach areas.

READ SAFETY & OPERATING INSTRUCTIONS BEFORE OPERATING EQUIPMENT

