



Electronic Service Manuals

This electronic document is provided as a service to our customers. We do not create the contents of the information contained in this document. Should you have detailed questions pertaining to the information contained in this document, you may contact Michco, or the manufacturer which provided the original information in this electronic deliverable. Michco's only part in this electronic deliverable was the electronic assembly process. By providing this manual on line we are not guaranteeing parts availability.

You may contact Michco through the following methods:

Phone (517) 484-9312 or (800) 331-3339

2011 N. High St. -- Lansing, Michigan -- 48906

Fax: (517) 484-9836

Email: CustServe@Michco.com

Web site: www.Michco.Com

Parts Web site: www.FloorMachineParts.Com

Order Parts on Line at:

www.FloorMachineParts.Com

Directly to Parts & Service:

By Email: **Shop@Michco.com**

By Fax: (517) 702-2041

By Voice: Use numbers above.

Serving the Cleaning Industry Since 1922

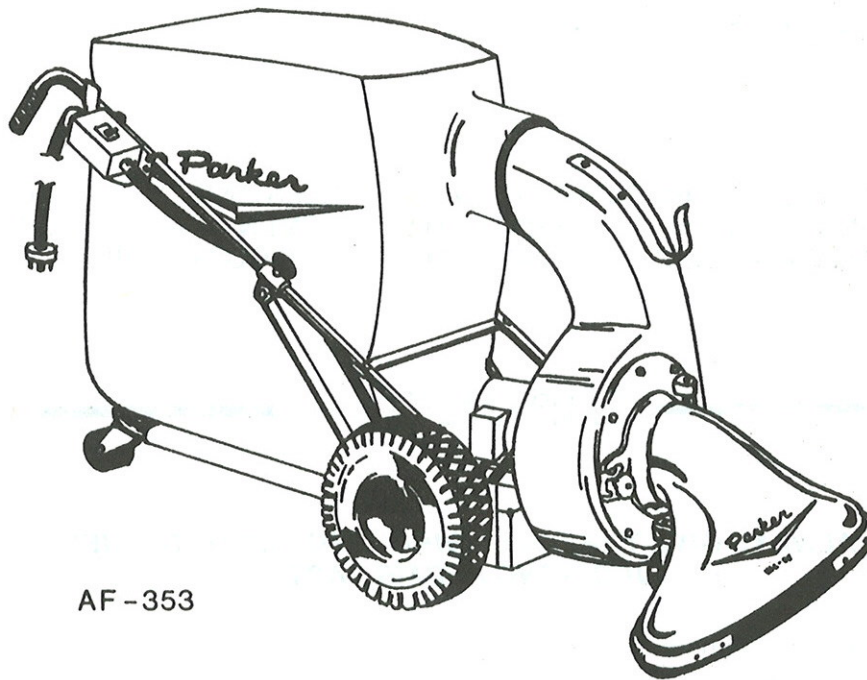
Notice: All copyrighted material remains property of original owners, all trademarks are property of respective owners. Manuals are subject to Manufacturer's reproduction limitations. Originals or reproductions were provided by manufacturers through a request. We make no warranty as to the correctness of information provided in this document and you assume all risk. By placing these manuals on line we are not declaring our corporation to be an manufacturer authorized dealer or provider, please check our web site for authorized manufacturers we represent.

OWNERS GUIDE



VACUUM SWEEPER VAC-35 ELECTRIC POWERED

MODEL NO. PV-8202-E & PV-8202-EX



AF-353

READ THESE INSTRUCTIONS BEFORE SETTING UP AND OPERATING MACHINE

*NOTE: ELECTRIC UNITS ARE NOT RECOMMENDED FOR OUTDOOR USE
OR IN WET OR DAMP AREAS.*

PARKER SWEEPER COMPANY Box 1728 Springfield, Ohio 45501

GENERAL INFORMATION

1. The Vacs covered by this owners guide are shipped complete in one box. Follow all instructions on assembly very carefully. Whenever a difference in instructions occurs either a separate instruction or an "Explanation Note" will be given.

2. Unpack Nose Cone, Spin-Pak, Upper Handle Assembly, Bag Platform and Filter Bag. All hardware is on the unit in its proper location. If something is missing, notify the factory or your local distributor to obtain parts needed. DO NOT discard any of the cartons or inner packing until machine is completely assembled.

3. Tip box over so blower housing is on top of engine. Pull unit out of box and stand it up. Move box out of the way. Whenever the terms Left and Right or L. and R. are used herein, it should be understood to mean from a position standing behind the unit facing in a forward direction.

4. SPIN-PAK Assemble the Spin-Pak to the Blower Housing by removing the four bolts and slipping the ring over the Housing neck. Line up the holes and insert four 1/4-20x5/8 bolts. Assemble washers and nuts to bolts.

"DO NOT TIGHTEN." "CENTER UP" Spin-Pak and tighten top bolt. Press ring around the Housing on the sides and tighten the side bolts, finally tighten the bottom bolt.

5. The Intake Housing should be attached to the front of the Blower Housing by inserting the hinge boss behind the hinge rod on the Front Cover, item 27, next swing the Intake Housing, item 38, until the slot fits over the adjusting screw and can be locked in place by tightening knob, item 23.

6. Adjust the height of the intake housing in relation to the floor by loosening the jam nut on the caster and threading the caster in or out of the bracket. When the desired height is determined, lock the caster in place by tightening the jam nut against the bracket. Normal floor clearance for intake housing is 3/4 to 1 1/4".

NOTE: Electric units are not recommended for outdoor use or in wet or very damp areas.

YOUR SAFETY IS OUR CONCERN. READ ALL SAFETY RULES AND OPERATING INSTRUCTIONS BEFORE ATTEMPTING TO START OR OPERATE THIS EQUIPMENT. FAILURE TO FOLLOW SAFETY RULES AND OPERATING INSTRUCTIONS MAY RESULT IN SERIOUS INJURY.

IMPORTANT

ALWAYS GIVE THE FOLLOWING INFORMATION WHEN ORDERING REPAIR PARTS:

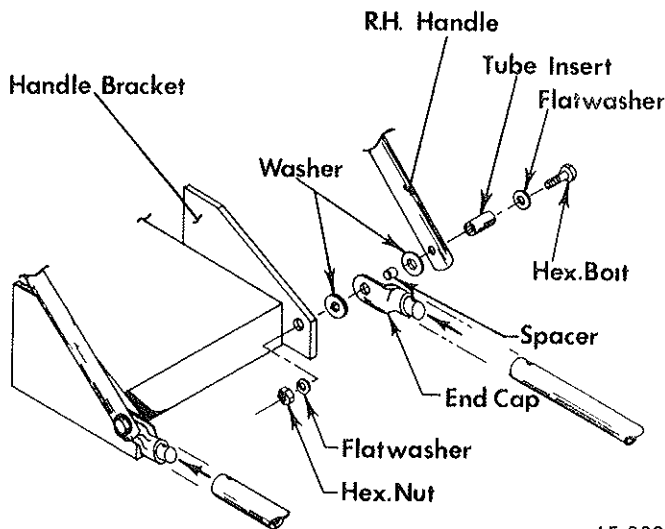
- | | |
|-------------------------------|------------------------|
| 1. Part Number (Not Ref. No.) | 3. Description of Part |
| 2. Quantity Needed | 4. Model No. of VAC-35 |

If unable to obtain parts locally, write down above information and send to:
PARKER SWEEPER CO., BOX 1728, SPRINGFIELD, OHIO 45501.

Your unit is right hand (R.H.) or left (L.H.) as you stand behind it.

Bag Platform Attachment

7. To attach bag platform, insert end cap into open end of bag platform as shown. Secure bag platform to end cap with contour bolt, hex nut and lockwasher. Bag platform should stay in place while sweeping.



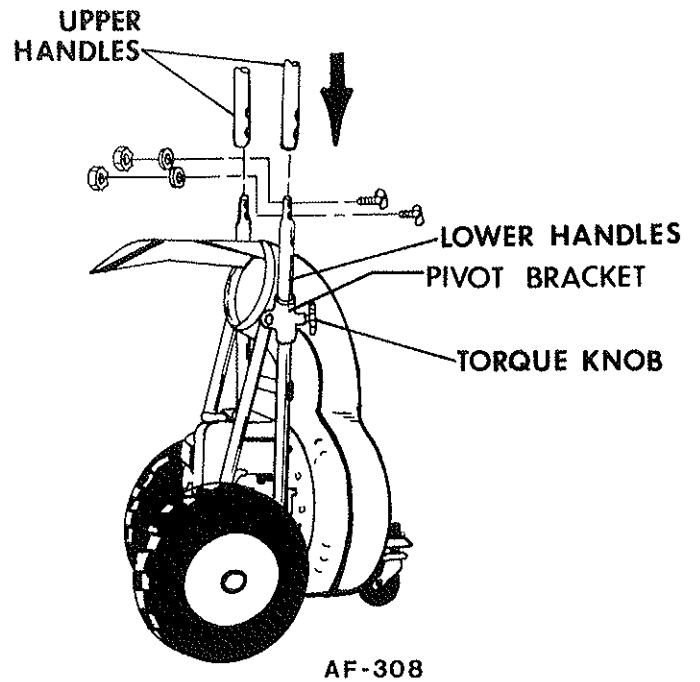
AF-338

Handle Assembly

8. Remove contour bolts, hex nuts and lockwashers from the end of the upper handle. Insert upper handle assembly onto the lower handle, making sure holes at the end of upper handles are aligned with holes at top of lower handles. Reinsert contour bolts, add lockwashers and hex nuts.

9. Loosen torque knob on lower handle so handles are free to move. From behind the unit pull down on handles with both hands until top edge of pivot bracket reaches end of upper handle. Screw torque knob in until tight, so knob makes contact with lockwashers. Handles should be locked into position; if not, repeat above procedure.

10. Tighten all bolts and nuts. Bring nuts up to a "snug" position all the way around, check handle assembly for alignment and, if OK, give each a final tightening. If alignment is needed, be sure nuts are just loose enough in all the joints to permit movement between the holes and the bolts. This should be enough to result in correct alignment. Do not bend tubing to accomplish proper position.



AF-308

Be sure that the bolts are pulled down tight enough for one or more bolt threads to extend through the nut. It may be necessary to collapse the tube SLIGHTLY to accomplish this.

DANGER:

Make a thorough inspection to see that all fastenings are tight and all parts are properly installed. DO NOT start motor without Intake and Dust Bag in place. See instructions for installing Dust Bag and Intake.

If motor is started without intake attached, serious injury may result by drawing clothing or parts of the body into the fan. If motor is run without dust bag, small stones or other objects may be picked up and propelled at operator or bystanders through the unprotected opening causing serious injury.

BE SAFE. PROTECT YOUR FAMILY. YOUR FRIENDS. YOURSELF. OBSERVE ALL SAFETY INSTRUCTIONS.

OPTIONAL ACCESSORIES

NOTE: Accessory No. and Price List can be obtained from your local distributor.

24" INTAKE HOUSING: For sweeping in narrow aisles or in areas where heavier objects are to be collected.

36" INTAKE HOUSING: Ideal for sweeping lighter weight debris and in larger, open areas.

DISCHARGE HOSE KIT: Attaches to exhaust port for leading debris into truck, container, etc.

HOSE ATTACHMENT 6" DIA.: 12 ft. length overall, fits all Vac-35 models. Attaches to impeller housing for cleaning debris from hard-to-reach areas.

HOSE ATTACHMENT 4" DIA.: 15 ft. length overall, fits all Vac-35 models, Attaches to impeller housing for cleaning debris from hard-to-reach areas.

SCRAPER BRUSH KIT: Installs inside rear of intake housing. Loosens debris which adheres to surface. (Available for 30" intake housing only.)

MAGNETIC ROD KIT: Assembles to front of intake housing. Attracts metal objects. (Available for 30" intake housings only.)

FLEECE-LINED FILTER COLLECTOR BAG: 11 cu. ft. launderable bag, minimizes dust. 54" heavy duty zipper opening, furnished with Unit.

HOW TO ORDER REPAIR PARTS

NOTE: When ordering service parts for any model Vac, follow the instructions listed below. By so doing, you will be assured of receiving the correct part in the shortest possible time.

1. Give the model and serial number found on the back of fan housing or back of chassis on your unit.

2. Write the complete part number as well as the description of the part, and quantity of part required.

3. Whenever the terms "left and right, or L and R" are used herein, it should be understood to mean from a position facing in direction of forward travel.

4. Give detailed shipping instructions. That is: whether shipment is to be by parcel post, United Parcel, air express, freight or truck.

NOTE: Parker Sweeper Co. is continually striving to improve its products. We must, therefore, reserve the right to make improvements or changes, when it becomes practical and possible to do so, without incurring any obligation to make changes or additions to the equipment previously sold..

READ SAFETY AND OPERATING INSTRUCTIONS BEFORE OPERATING EQUIPMENT

1. Attach the dust bag to the sweeper by placing the loops over the handles, Slip the neck of the dust bag over the Spin-Pak until the tie strap can be pulled tight around the housing neck just over the bead on the Spin-Pak. The bead must be covered.

2. Before starting the motor read and understand the following:

Spin-Pak is in place.

Dust Bag or Discharge Hose is in place.

NOTE: FAILURE TO OBSERVE SAFETY INSTRUCTIONS MAY RESULT IN SERIOUS INJURY.

A. Intake Housing or Hose Kit is attached to the Fan Housing.

B. Heavy concentration of sand and gravel should be avoided. These materials are extremely abrasive, and while the Vac-35 will handle moderate amounts of these materials, it was not designed for heavy applications. Because these materials are extremely heavy, only small amounts should be allowed to collect in the bag because large amounts cause poor handling and difficulty in pushing. The Vac-35 is capable of picking up empty tin cans and blocks of wood, but it was not intended for this type of service, since tremendous stresses build up as these pieces pass through the impeller. Treat your Vac-35 with reasonable care and it will repay you with long trouble-free service.

C. The Vac-35 will handle most common kinds of debris found around industrial plants, commercial buildings, homes and farms. Acid contaminated materials, magnesium, dust and other DANGEROUS DEBRIS that is considered hazardous should not be handled with the Vac-35 unless approved by a regulating authority considered to be an expert in the handling of such hazardous materials.

D. Keep dust bag clean. The efficiency of this unit depends on the breathing capabilities of the dust bag. On extremely dusty jobs, empty bag often. Never allow debris to remain in bag after use. There is a danger of spontaneous combustion.

DANGER: Improper use of this equipment may result in serious injury.

3. LUBRICATION

Lubricate the wheel bearings and wheel axle on the caster once a week if used daily. This will keep the unit operating smoothly.

4. SERVICING

A. The Vac-35 is equipped with a front adjustable caster which will provide any height adjustment of intake housing that may be practical. Lock nuts *must* be kept tight.

CAUTION: DO NOT WORK ON VAC-35 with motor running. Bring to a DEAD STOP. Remove plug on motor. When changing attachments, bring to a complete stop.

B. For easy rolling, keep the tires inflated to 25 pounds pressure.

C. For a "like new" appearance, wash the plastic blower housing and nozzle with soap and water, rinse with clear water and wipe dry. Do not use harsh abrasives or cleansers as they will dull the bright finish.

OBSERVE SAFETY RULES AT ALL TIMES. DON'T TAKE CHANCES!

5. ELECTRIC POWERED MODELS ASSEMBLY

A. Refer to Electric Switch Diagram 17 and 18. This support hook is to provide a place to store the extension cord. The cord is not furnished by Parker Sweeper Co.

B. Remove hardware from hook and place the bolts thru the holes in item 17, Electric Switch Diagram, then thru the holes in the neck from inside the fan housing. Place the hook item 16 over the bolts and install and tighten the nuts.

C. Model PV-8202-E—2HP—3HP—220/440 Volts — 50/60 Hertz. This model leaves the factory wired for 220 Volts AC operating current. This model has the open drip proof motor with the start-stop switch to be installed on the handle. All of the electrical connections have been made and the parts have been assembled. To assemble switch in proper position, slide it upwards toward the upper cross brace until electrical cord has very little slack. Tighten nuts, item 10, being sure that switch is in upright position.

D. Extension cords are not furnished with electric model Vacs. The switch assembly is supplied with a male locking connector, four conductor, polarized, to which an extension cord is to be attached. Electrical cords must be 4 Conductor type and both power outlets and cords shall meet all local and national codes. The power source must be properly fused and grounded.

E. Model PV-8202-EX—2HP—3HP — 220/440 Volts 50/60 Hertz. This model has a closed and explosion proof type motor with the start-stop switch installed on the motor wired for 220 volts AC operation current. All the electrical connections have been made to the start-stop switch. The motor and switch is UL approved for Class 1, Group D and Class 2, Group F and G Classifications. These classifications cover applications listed as follows:

(1) GASEOUS LOCATIONS. Gaseous locations such as gasoline refineries, paint and varnish plants, dry cleaning plants, or wherever the gas encountered is not more hazardous than high-test gasoline vapor.

(2) EXPLOSIVE DUST. Areas containing explosive dust from coal, coke, carbon black or other materials.

(3) EXPLOSIVE GRAIN DUST. Applications in grain elevators, feed mills, flour mills or other locations where the atmosphere contains explosive grain dust.

F. This model PV-8202-EX leaves the factory wired for 220 Volts AC operating current. Extension cord is not furnished by Parker Sweeper Co.

G. The extension cord for Explosion Proof Motors must be attached directly to the switch. See Wiring diagram.

H. All cords must be 4 Conductor, and both power outlet and extension cords shall meet all local and national codes. The power source must be properly fused and grounded.

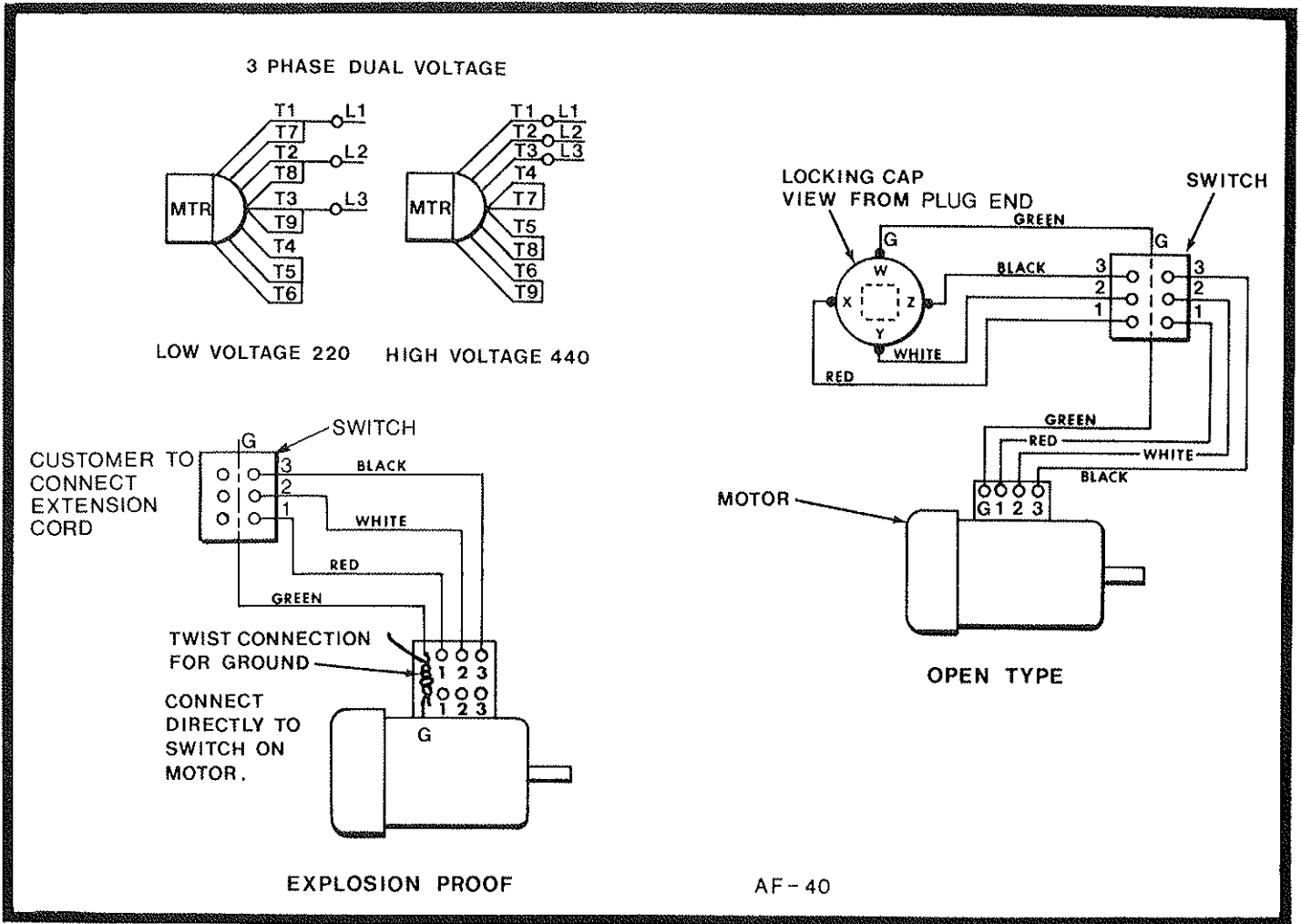
WARNING: BE SURE THE ELECTRICAL POWER SOURCE IS DISCONNECTED BEFORE CONNECTING THE EXTENSION CORD TO THE EXPLOSION PROOF SWITCH.

I. PHASE ROTATION. The motor direction of rotation is determined by the sequence of the phase connections. This unit leaves the factory properly wired for 220 volt AC current and a standard sequence. If power connections are not standard, it will be necessary to interchange any TWO of the three lead connections, 1, 2 and 3 on the motor to obtain the correct direction of rotation. Your power company can assist you in the determination of the phase sequence.

IMPORTANT: It is important that the direction of the Vac-35 Impeller rotation be checked on this machine. Looking directly at the impeller from the front of the machine, it should turn counterclockwise, as indicated by arrow on front of fan housing.

CAUTION: All electrical cord and outlets should meet local and national electrical codes. For extension cord up to 50 ft. in length use No. 14 wire. For extension cord up to 100 ft. in length use No. 12 wire.

NOTE: OBSERVE ALL APPLICABLE LOCAL, STATE AND NATIONAL ELECTRICAL CODES AND REGULATIONS WHEN USING THIS EQUIPMENT.

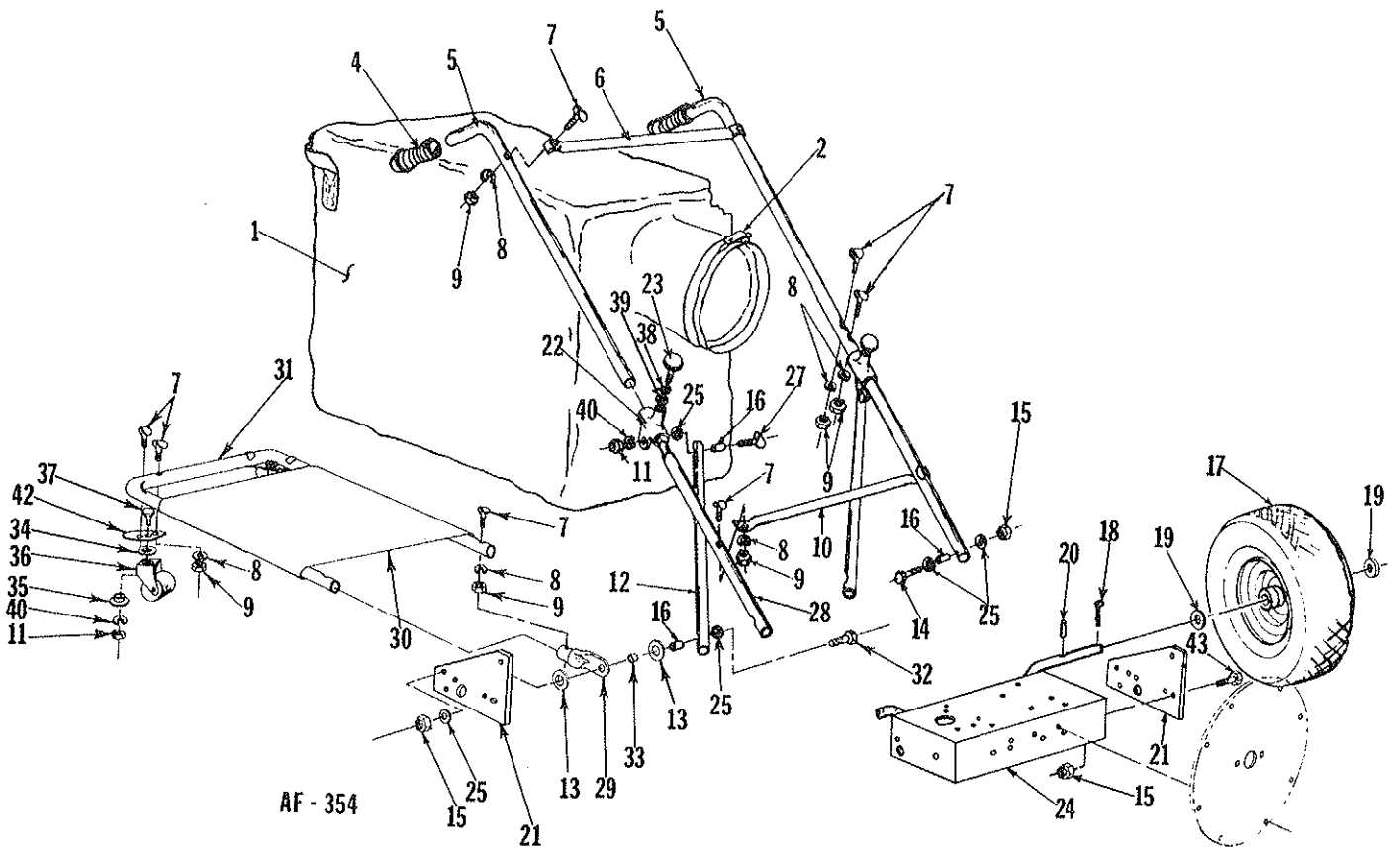


Wiring Diagram

VOLTAGE CONVERSION PROCEDURE

- A. If the unit is to be used in a location where 440 volt, 3 phase, 60 Hz power is available, the electric motor can be converted in the following manner.
- B. MAKE SURE MOTOR IS DISCONNECTED FROM POWER SOURCE.
- C. Remove the junction box cover from the motor. Refer to wiring diagram and disconnect leads and reconnect for 440 volt. Attach a tag to the unit indicating that it is to operate only 440 volt.

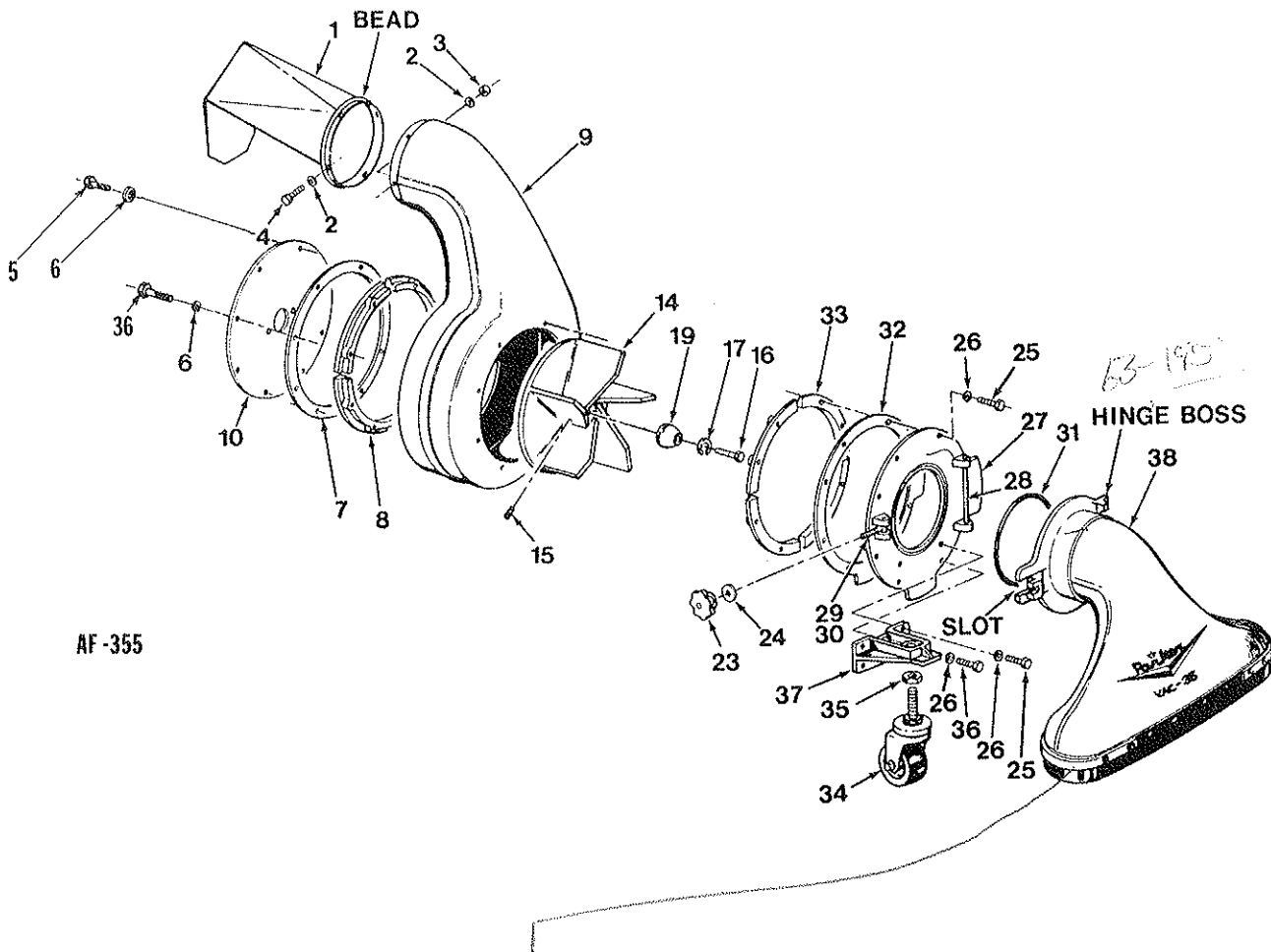
HANDLE ASSEMBLY



REPAIR PARTS**SECTION 11****MODEL NO.****PV-8202-E & PV-8202-EX****HANDLE ASSEMBLY**

INDEX NO.	PART NO.	DESCRIPTION	PV-8202-E	PV-8202-EX
1	SA-733-D	Dust Bag Assembly	1	1
2	SA-794-B	Strap Assembly	1	1
3	SA-981-C	Handle Assembly	1	1
4	80-232-A	• Handle Grip-Red	2	2
5	80-321-C	• Handle	2	2
6	81-04-A	• Cross Brace-Upper	1	1
7	69-416-24	• Bolt, Cont, Hd. 1/4-20x1½	14	14
8	935-416	• Lockwasher 1/4	14	14
9	335-416	• Nut, Hex. Plain 1/4-20	14	14
10	81-47-B	Cross Brace-Lower	1	1
11	335-516	Nut, Hex. Plain 5/16-18	4	4
12	80-272-B	Truss Brace	2	2
13	76-36-A	Washer Special	4	4
14	65-516-28	Bolt, Hex Hd. 5/16-18x1¾	2	2
15	365-516	Nut, Hex, Lock 5/16-18	6	6
16	80-238-A	Tube Insert	6	6
17	SA-231-B	Wheel Assembly	2	2
	68-447-B	• Wheel	2	2
	68-312-A	• Tire, 5.3	2	2
18	380-432-20	Cotter Pin, 1/8x1¼	2	2
19	945-1216	Flat Washer 3/4	4	4
20	67-521-A	Roll Pin-O. 187x1⅛	2	2
21	73-362-C	Handle Bracket	2	2
22	80-246-B	Pivot Bracket	2	2
23	80-228-A	Knurled Torque Knob	2	2
24	73-111-C	Chassis Weldment	1	1
25	945-516	Flat Washer 5/16	8	8
27	69-516-28	Bolt, Contour 5/16-18x1¾	2	2
28	81-07-B	Lower Handle	2	2
29	81-116-A	Tubing End Cap	2	2
30	81-117-C	Bag Platform Sleeve	1	1
31	81-96-B	Bag Platform Frame	1	1
32	65-516-32	Bolt, Hex. Hd. 5/16-18x2	2	2
33	81-120-A	Spacer	2	2
34	50-230-A	Washer Special	2	2
35	78-130-A	Caster Bearing	2	2
36	SA-962-B	Caster Assembly	2	2
37	65-516-16	Bolt, Hex. Hd. 5/16-18x1	2	2
38	935-616	Split Lockwasher 3/8	2	2
39	936-616	Internal Tooth Lockwasher 3/8	2	2
40	935-516	Lockwasher, Spring 5/16	4	4
42	82-02-B	Caster Plate	2	2
43	65-516-12	Bolt, Hex Hd. 5/16-18x3/4	4	4

HOUSING ASSEMBLY



AF-355

RUBBER SKIRT WITH
BOLTS & NUTS # 73-67 14.55
GUARDS # 62-98 2.75

REPAIR PARTS

SECTION 11

MODEL NO.

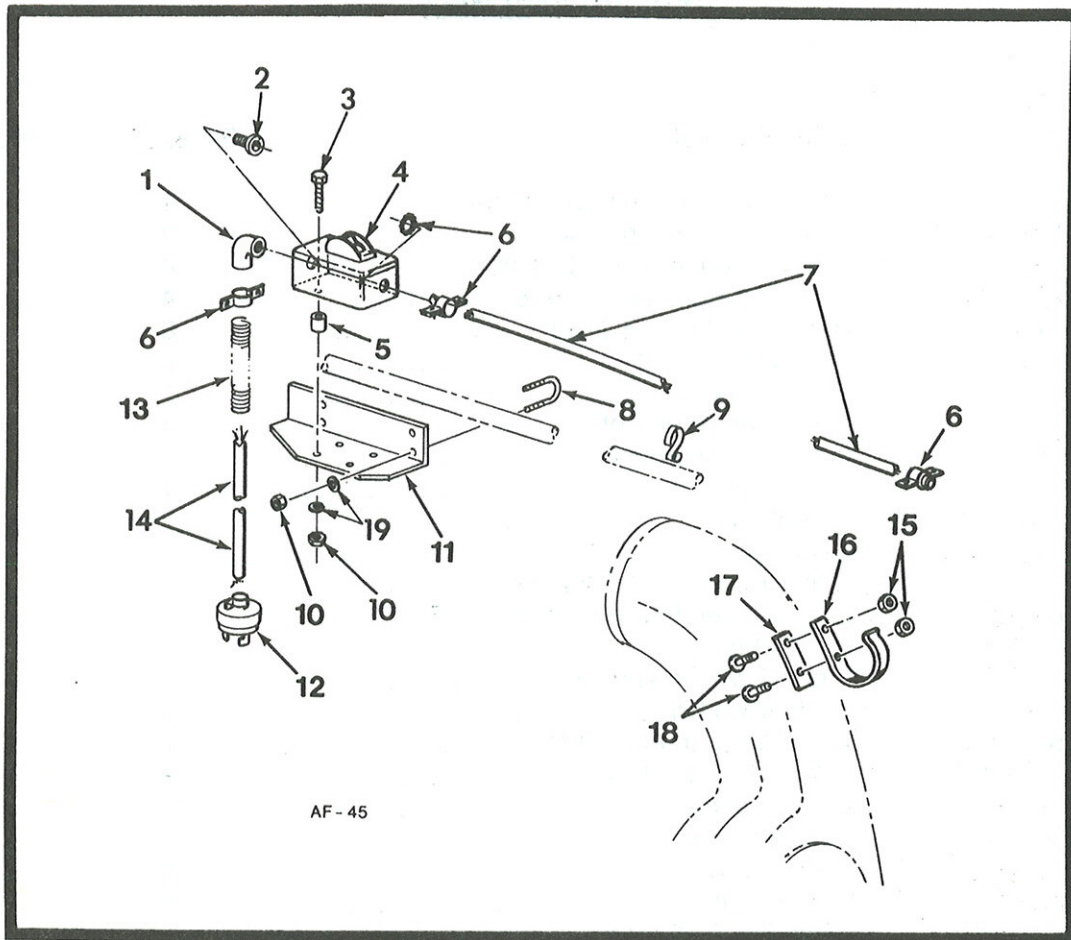
PV-8202-E & PV-8202-EX

HOUSING ASSEMBLY

INDEX NO.	PART NO.	DESCRIPTION	PV-8202-E	PV-8202-EX
1	66-448-B	Spin Pak, Deflector Weldment	1	1
2	945-416	Flat Washer, Plain 1/4	8	8
3	364-416	Nut, Hex Lock, Thin, 1/4-20	4	4
4	65-416-10	Bolt, Hex Hd., 1/4-20x5/8	4	4
5	65-416-16	Bolt, Hex Hd., 1/4-20x1	6	6
6	935-416	Lockwasher, 1/4	6	6
7	62-187-C	Rubber Gasket	1	1
8	64-78-C	Anti-Wrap Segment	4	4
9	70-103-F	Housing Assembly	1	1
10	72-161-C	Back Cover	1	1
14	72-162-D	Fan Wheel	1	1
15	564-516-16	Setscrew	1	1
** 16	60-516-40	Bolt, Hex Hd., 5/16-24x2½	1	1
17	936-516	Lockwasher, Internal Tooth 5/16	1	1
19	73-119-A-1	Fan Retainer	1	1
	63-225-D	Front Cover Assembly	1	1
23	80-29-A	• Adjusting Knob	1	1
24	945-816	• Flat Washer, Plain, 1/2	1	1
25	65-416-16	• Bolt, Hex Hd., 1/4-20x1	8	8
26	935-416	• Lockwasher, 1/4	10	10
27	63-191-D	• Front Cover	1	1
28	63-194-A	• Hinge Pin	1	1
29	63-192-A	• Pivot Bolt	1	1
30	63-193-A	• Roll Pin, 0.264x1¼	1	1
31	63-190-A	• O-Ring, Gasket	1	1
32	75-03-C	• Gasket, Front	1	1
33	64-78-C	• Anti-Wrap Segment	4	4
34	64-71-A	Caster, Stem Type	1	1
35	340-1216	Nut, Hex. Jam 3/4	1	1
36	65-416-20	Bolt, Hex Hd., 1/4-20x1¼	1	1
37	66-430-C	Caster Bracket	1	1
38	SA-911-D	Intake Housing, 30 Inch	1	1
38	MA-113-D	Intake Housing, 24 Inch	*	*
38	MA-120-D	Intaking Housing, 36 Inch	*	*

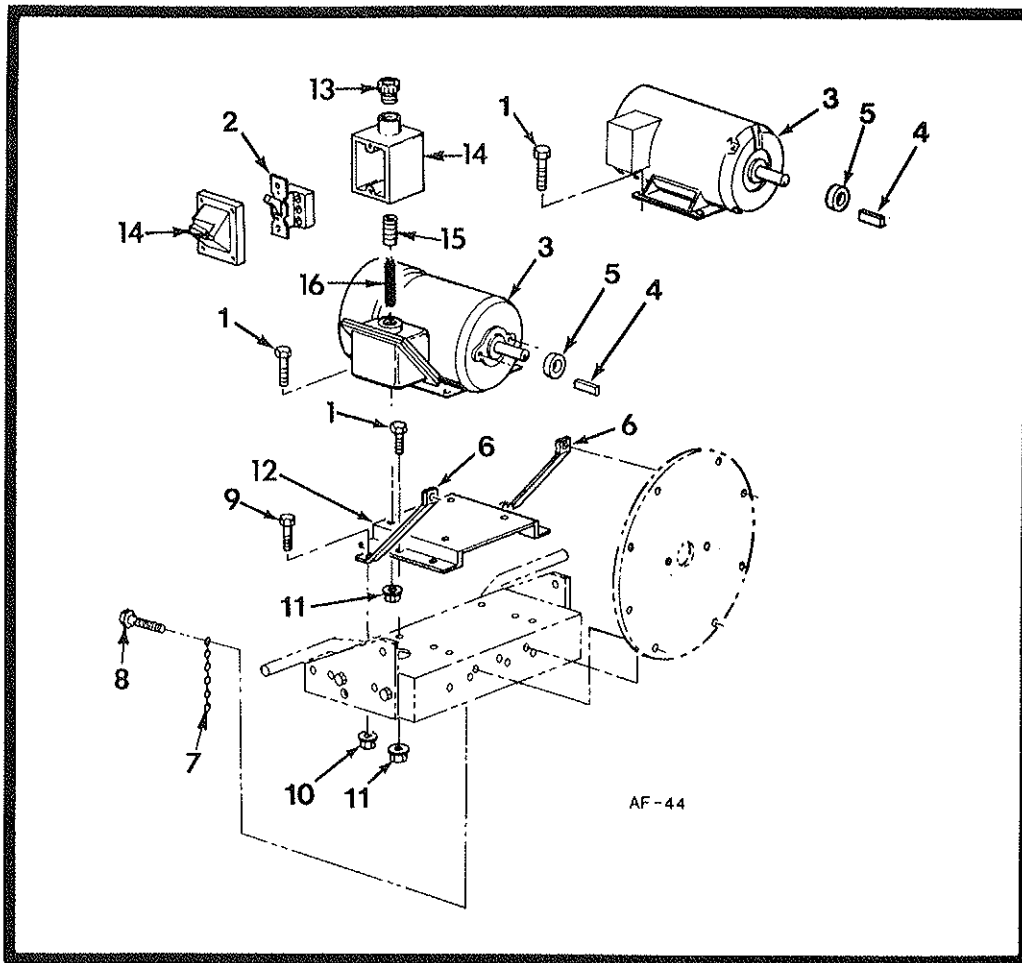
* Purchased Separate, Optional Accessory

** 16 Torque 5/16 Bolt to 18-20 Ft./Lbs.



Electric Switch Group

INDEX NO.	PART NO.	DESCRIPTION	PV-8202-E	PV-8202-EX
1	66-379-A	Elbow, Female 1/2x90°	1	-
2	72-171-A	Conduit Fitting	1	-
3	65-416-20	Bolt, Hex. Hd. 1/4-20x1 1/4	4	-
4	64-148-A	Switch, 3 Pole	1	-
5	63-219-A	Spacer	4	-
6	63-13-A	Connector	3	-
7	82-44-A	Cord 14/4, Type S.O. Neoprene 54 In. Lg. ...	1	-
8	82-45-A	U-Bolt	2	-
9	82-57-A	Clamp	1	-
10	365-416	Nut, Hex. Lock 1/4-20	8	-
11	66-396-A	Bracket, Switch Mtg.	1	-
12	64-146-A	Locking Cap, 4 Wire Polarized	1	-
13	64-139-A	Spring	1	-
14	82-56-A	Cord 14/4, Type S.O. Neoprene 54 In. Lg. ...	1	-
15	364-416	Nut, Hex. Lock Thin 1/4-20	2	2
16	63-143-C	Cable Hook	1	1
17	63-175-A	Washer, Plate	1	1
18	65-416-12	Bolt, Hex. Hd. 1/4-20x3/4	2	2
19	945-416	Flatwasher 1/4	8	-



Motor Group

INDEX NO.	PART NO.	DESCRIPTION	PV-8202-E	PV-8202-EX
1	65-516-12	Bolt, Hex. Hd. 5/16-18x3/4	8	8
2	72-191-A	Starting Switch	-	1
3	82-48-C	Motor	-	1
3	82-32-C	Motor	1	-
4		Motor Key 3/16x1 1/2 (Supplied w/Motor)	1	1
5	72-163-A	Fan Spacer	1	1
6	73-409-B	Support Bracket	2	2
7	47-219-A-8	Static Ground Chain	2	2
8	65-416-20	Bolt, Hex, Hd. 1/4-20x1 1/4	2	2
9	65-416	Bolt, Hex. Hd. 1/4-20x3/4	4	4
10	365-416	Nut, Hex. Lock 1/4-20	4	4
11	365-516	Nut, Hex. Lock 5/16x18	8	8
12	73-410-C	Motor Base	1	1
13	72-293-A	Connector	-	1
14	72-190-A	Condulet, Switch (with cover)	-	1
15	66-230-A	Pipe Nipple 3/4	-	1
16	82-50-A	Electric Cord 14/4x9" Lg.	-	1

Order all parts from your nearest PARKER PARTS DISTRIBUTORS. If unable to locate the part from your Parts Distributor, forward your order to PARKER SWEEPER COMPANY for handling.

Hart-Greer, Inc. 900 N. 24th St. BIRMINGHAM, AL 35203	Morton B. Collins 300 Birnie Ave. SPRINGFIELD, MA 31106	Parker Sweeper Company P.O. Box 1728 SPRINGFIELD, OH 45501 Phone: 513-323-4901	Boyd Martin Company 1260 N.W. Temple SALT LAKE CITY, UT 84116
Lawn & Garden Supply Co. 2222 N. 27th Ave. PHOENIX, AZ 85017	Frost Company 483 Wildwood St. WOBURN, MA 01801	M.P.E. Sales, Inc. 25850 Chardon Rd. CLEVELAND, OH 44143	Denver Wholesale Florist Co. 1211 S. Swanner SALT LAKE CITY, UT 94104
Lawn & Garden Supply Co. 5455 S. Nogales Highway TUCSON, AZ 85706	Ideal Mower Sales, Inc. 811 Woodward Heights FERNDALE, MI 48220	Tri-County Sales & Service 15 North West Ave. YOUNGSTOWN, OH 44502	Wetsel Seed Co. 941 N. Liberty HARRISONBURG, VA 22801
H.V. Carter Company 1700 E. 14th St. OAKLAND, CA 94606	Lorenz Service Company 2500 S. Pennsylvania Ave. LANSING, MI 48220	Wait Sales Company 406-10 S. Peoria, Box 1015 TULSA, OK 74120	The Bentley Company 4126 Airport Way, S. SEATTLE, WA 98108
Tarzana Mower & Engine Parts, Inc. 3075 Reseda Blvd. RESEDA, CA 91335	R.L. Gould Company 3711 N. Lexington Ave. ST PAUL, MN 55112	Baltz & Son Co. 9817 E. Burnside PORTLAND, OR 97216	Northwest Mower, Inc. 926 N. 165th St. SEATTLE, WA 98133
Colorado Outdoor Equip., Inc. 527 W. Evans DENVER, CO 80223	Hance Distributors 420 Excelsior Ave., W. HOPKINS, MN 55343	Monroe Machinery & Supplies, Inc. 1421 S.E. Gidson St. PORTLAND, OR 97242	Interstate Radiator & Lawn Mower Co. 1611 4th Ave. CHARLESTON, WV 25312
Zaun Equipment Co. 2330 Bruner Ln., S.E. FORT MYERS, FL 33908	Gunthers Service & Supply 7320 Wornall Rd. KANSAS CITY, MO 64114	Lawn & Golf Supply Co. 647 Nutt Rd. PHOENIXVILLE, PA 19460	R.L. Gould 344 Berger St. GREEN BAY, WI 54302
Zaun Equipment, Inc. 1741 Hamilton St. JACKSONVILLE, FL 32210	Henzler, Inc. 2015 Lemay Ferry Rd. ST. LOUIS, MO 63125	Gardenville Supply Co., Inc. Route 611 PIPERSVILLE, PA 18947	Four Seasons Equipment, Inc. 7373 S. 6th St. OAK CREEK, WI 53154
Florida Turf & Garden 275 N.W. 64th St. MIAMI, FL 33166	Port Huron Machinery & Supply 801 Q St. LINCOLN, NE 68508	Bluemont Co. 11125 Frankstown Rd. PITTSBURGH, PA 15235	Farm & Tiller Sales, Ltd. 1205 E. Hastings St. VANCOUVER, B.C., CANADA V6A155
Zaun Equipment, Inc., 140 S. Rio Grande Ave. ORLANDO, FL 32806	George Smith & Sons, Inc. 322 Broadway BETHPAGE, L.I., NY 11714	Niemeyer Corp. 1135 Phoenixville Pike, Box 531 WEST CHESTER, PA 19380	Hoffars Sales, Ltd. 14251 Burrows Rd. RICHMOND, B.C., CANADA V6V 1K9
Zaun Equipment, Inc. 1032 44th Ave., N. T. PETERSBURG, FL 33714	Grasslands Equip. & Irrigation 892 Troy Schenectady Rd. LATHAM, NY 12110	Fidelity Sales Corp. 6331 Baum Dr. KNOXVILLE, TN 37919	Robertson Seed, Ltd. 9241-48th St. EDMONTON, ALBERTA, CANADA T6B 2R9
Lawn & Turf, Inc. Rwy. Interstate 20, East CONYERS, GA 30207	Henry W. O'Neil & Associates, Inc. 410 N. Goodman St. ROCHESTER, NY 14609	Fidelity Sales Corp. 447 E. Market St. KINGSFORD, TN 37662	Morin Equipment, Inc. 90 Rue D'Anvers Parc Industriel ST. AUGUSTIN, QUEBEC, CANADA G0A 3E0
Boyd Martin Co. 554 Chinden Blvd. BOISE, ID 83704	The Messinger Company, Inc. 374 Avery St. ROCHESTER, NY 14606	Fidelity Sales Corp. 6044 Lee Highway CHATTANOOGA, TN 37421	Morin Equipment, Inc. 270 Ave. Du Parc Industriel LONGUEVIL, MONTREAL, CANADA J4H 3V6
Geo. A. Davis 440 Northwest Highway CHICAGO, IL 60630	American Hdwe. & Equip. 3940 Greensboro St. CHARLOTTE, NC 28206	Goldthwaite's of Dallas, Inc. 2700 Forest Ln., Box 34660 DALLAS, TX 75234	Uniquip Canada Ltd. 2813 Botham MONTREAL, QUEBEC, CANADA H4S 1H8
Plant's Lawn Equip., Inc. Grant St. NORTH AURORA, IL 60542	Hayward Distributing Co. 460 Neilston St. COLUMBUS, OH 43215	Goldthwaite's of Ft. Worth 1401 Foch St. FT. WORTH, TX 76107	Duke Lawn Equipment 1184 Plains Road, East BURLINGTON, ONTARIO, CANADA L7S 1W6
E. Booher & Sons 1009 W. State St. ELMBURY, IN 47320	Schroeder Sales & Service, Inc. 1144 Harrison Ave. HARRISON, OH 45030	Goldthwaite's of Houston, Inc. 220 Fariss HOUSTON, TX 77025	Uniquip Canada, Ltd. 6295 Shawson Dr., Unit 8 MISSISSAUGA, ONTARIO, CANADA L5T 1H4
Truce Engine, Inc. 791 N.W. 86th St. DES MOINES, IA 50322	Hershman's, Inc. 12477 Benner Rd. RITTMAN, OH 44270	Goldthwaite's of Texas, Inc. 10751 Sentinel SAN ANTONIO, TX 78217	