



## Electronic Service Manuals

This electronic document is provided as a service to our customers. We do not create the contents of the information contained in this document. Should you have detailed questions pertaining to the information contained in this document, you may contact Michco, or the manufacturer which provided the original information in this electronic deliverable. Michco's only part in this electronic deliverable was the electronic assembly process. By providing this manual on line we are not guaranteeing parts availability.

You may contact Michco through the following methods:

Phone (517) 484-9312 or (800) 331-3339

2011 N. High St. -- Lansing, Michigan -- 48906

Fax: (517) 484-9836

Email: [CustServe@Michco.com](mailto:CustServe@Michco.com)

Web site: [www.Michco.Com](http://www.Michco.Com)

Parts Web site: [www.FloorMachineParts.Com](http://www.FloorMachineParts.Com)

Order Parts on Line at:

**[www.FloorMachineParts.Com](http://www.FloorMachineParts.Com)**

Directly to Parts & Service:

By Email: **[Shop@Michco.com](mailto:Shop@Michco.com)**

By Fax: (517) 702-2041

By Voice: Use numbers above.

**Serving the Cleaning Industry Since 1922**

Notice: All copyrighted material remains property of original owners, all trademarks are property of respective owners. Manuals are subject to Manufacturer's reproduction limitations. Originals or reproductions were provided by manufacturers through a request. We make no warranty as to the correctness of information provided in this document and you assume all risk. By placing these manuals on line we are not declaring our corporation to be an manufacturer authorized dealer or provider, please check our web site for authorized manufacturers we represent.

# OWNERS GUIDE

# Yard Boy<sup>TM</sup>

THE 4-WAY CART MODEL YB-7605



5-1-76 -Plate No. 320-

**IMPORTANT**

**ALWAYS GIVE THE FOLLOWING INFORMATION WHEN ORDERING REPAIR PARTS:**

- |                               |                        |
|-------------------------------|------------------------|
| 1. PART NUMBER (Not Item No.) | 3. DESCRIPTION OF PART |
| 2. QUANTITY NEEDED            | 4. MODEL No. YB-7605   |

MIAMI, INC., BOX 1694, HATTIESBURG, MISSISSIPPI 39401

Your unit is right hand (R.H.) or left hand (L.H.) as you stand behind it.

# ASSEMBLY

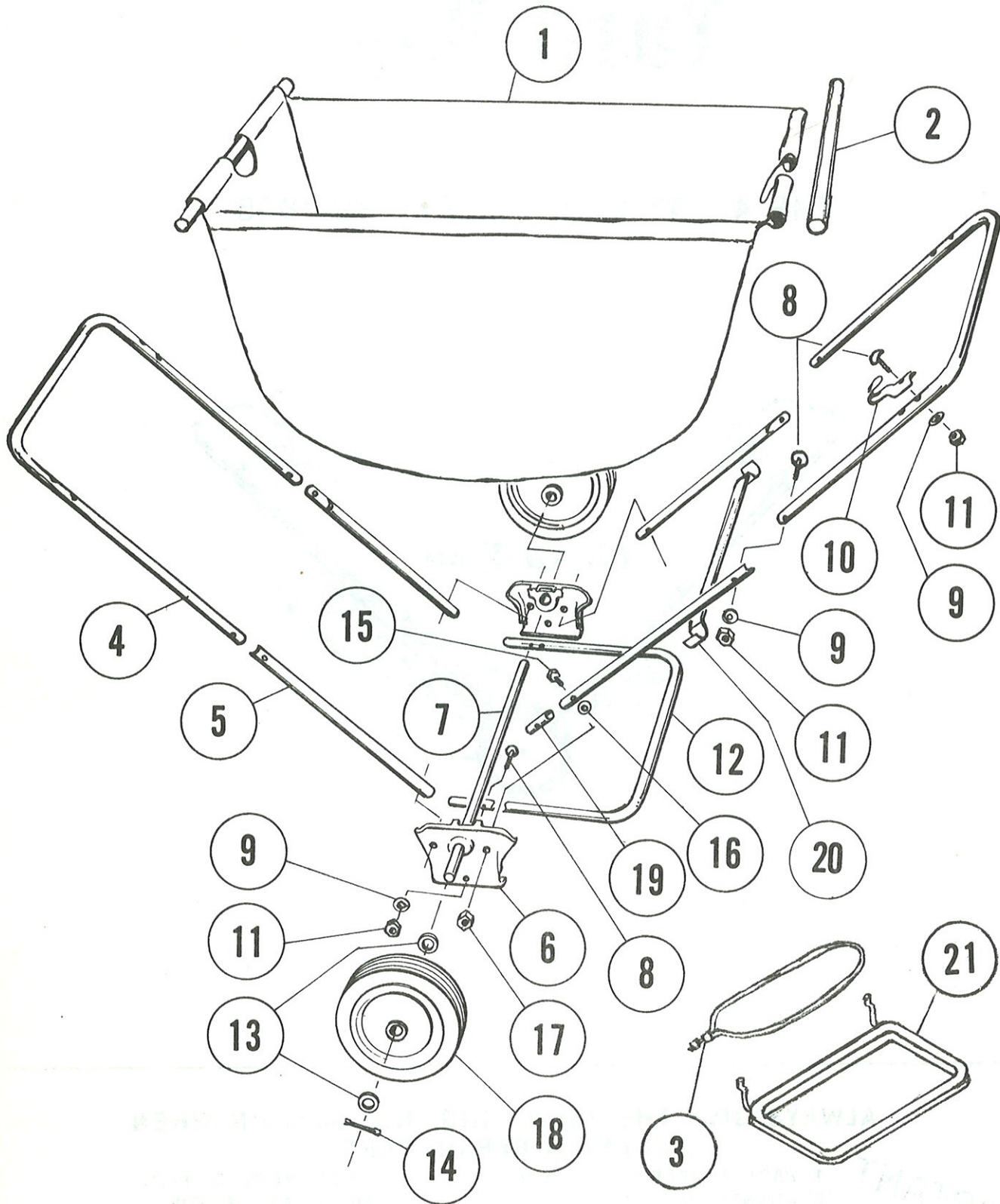


Figure 1

# ASSEMBLY INSTRUCTIONS

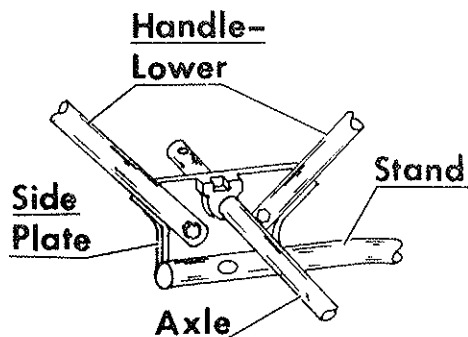
## PARTS LIST - Figure 1

| Ref. No. | Part No.  | Qty. Per Unit | Description of Part                               | Ref. No. | Part No.   | Qty. Per Unit | Description of Part                              |
|----------|-----------|---------------|---|----------|------------|---------------|--|
| 1        | 76-212-C  | 1             | Basket Cloth                                      | 12       | 52-93-C    | 1             | Stand  |
| 2        | 74-50-A   | 2             | Rod Wood  | 13       | 945-816    | 4             | Washer-Flat                                      |
| 3        | 76-166-A  | 1             | Cord  | 14       | 380-332-12 | 2             | Cotter Pin $\frac{3}{32}$ x $\frac{3}{4}$ lg.    |
| 4        | 76-206-C  | 2             | Handle-Upper                                      | 15       | 65-516-24  | 4             | Bolt-Hex Hd. $\frac{5}{16}$ -18 x $1\frac{1}{2}$ |
| 5        | 74-49-B   | 4             | Handle-Lower                                      | 16       | 945-516    | 4             | Washer-Flat                                      |
| 6        | 74-45-B   | 2             | End Plates  | 17       | 365-516    | 4             | Nut-Hex $\frac{5}{16}$ -18                       |
| 7        | 74-51-A   | 1             | Axle  | 18       | 74-47-A    | 2             | Wheel (with tire)                                |
| 8        | 69-416-20 | 10            | Bolt-Cont. Hd. $\frac{1}{4}$ -20 x $1\frac{1}{4}$ | 19       | 75-30-A    | 4             | Insert-Handle Ends                               |
| 9        | 935-416   | 10            | Washer-Spring Lock                                | 20       | 52-126-B   | 1             | Carrier Spring                                   |
| 10       | 74-32-B   | 4             | Dowel Rod Bracket                                 | 21       | 76-165-B   | 1             | Bag Support Weldment                             |
| 11       | 335-416   | 10            | Nut-Hex $\frac{1}{4}$ -20                         |          |            |               |  |

The Lawn Cart Carton will contain the following items:

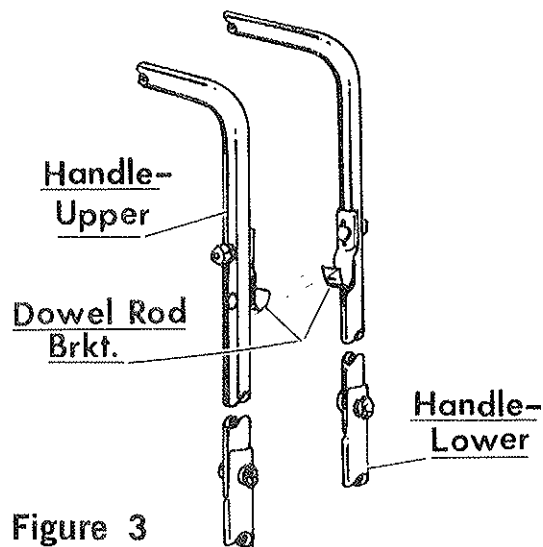
- 2 Handles-Upper
- 2 Wheels
- 1 Axle
- 1 Stand
- 1 Cord
- 1 Bag Support Weldment
- 2 Handle-Lower and Side Plate Assem.'s. which include:
  - 4 Handles-Lower
  - 2 Side Plates
  - 4 Bolts-Hex Hd.  $\frac{5}{16}$ -18 x  $1\frac{1}{2}$
  - 4 Nuts-Hex Lock  $\frac{5}{16}$ -18
  - 4 Washers-Flat for  $\frac{5}{16}$  Bolt
- 1 Basket - Cloth rolled up and containing the following:
  - 1 Carrier-Spring
- 1 Plastic Bag containing the following hardware:
  - 4 Dowel Rod Brackets
  - 4 Washers Flat for  $\frac{1}{2}$  dia. rod
  - 10 Bolts-Contour Hd.  $\frac{1}{4}$ -20 x  $1\frac{1}{4}$
  - 10 Washers-Spring Lock for  $\frac{1}{4}$  Bolt
  - 10 Nut-Hex Plain  $\frac{1}{4}$ -20
  - 2 Cotter Pins  $\frac{3}{32}$  dia. x  $\frac{3}{4}$

Fig. 1 & 2 - Attach the Handle-Lower and Side Plate Assemblies to the Stand using the Contour Hd. Bolts, Spring Lock Washer and Plain Nut. Before tightening the Nuts, slip the Axle thru the Side Plates leaving the same length of Axle extending thru each Side Plate. Now tighten the Nuts.



**Figure 2**

Fig. 1 & 3 - Attach the Handle-Upper to each Handle-Lower and Side Plate Assembly using the Contour Hd. Bolts, Spring Lock Washer and Plain Nut. (4 places). Now attach the Dowel Rod Brackets to the Handle-Upper using the Contour Hd. Bolts, Spring Lock Washer and Plain Nut. (4 places). Slide the Dowel Rod Bracket up as high as the slot will allow on one Handle-Upper (both sides). On the other Handle-Upper, slide the Dowel Rod Bracket down as far as the slot will allow (both sides). Now pull the Handles together and adjust the bottom Dowel Rod Bracket so it will snap together on the bottom of the top Dowel Rod Bracket.



**Figure 3**

Fig. 1 & 4 - Mount the Wheels on the Axle extending thru the Side Plates in the following sequence (both sides). Washer  $\frac{1}{2}$  I.D., Wheel Washer  $\frac{1}{2}$  I.D. then the Cotter Pin.

**IMPORTANT** - Always empty the Basket after each time it is used. This will prolong the life of the Material.

**LUBRICATION** - A couple drops of light oil on the Axle, (hold the Axle up allowing the oil to run under the Wheel Bearing) a few times during the season will extend the service life of the Plastic Wheels.

# ASSEMBLY INSTRUCTIONS

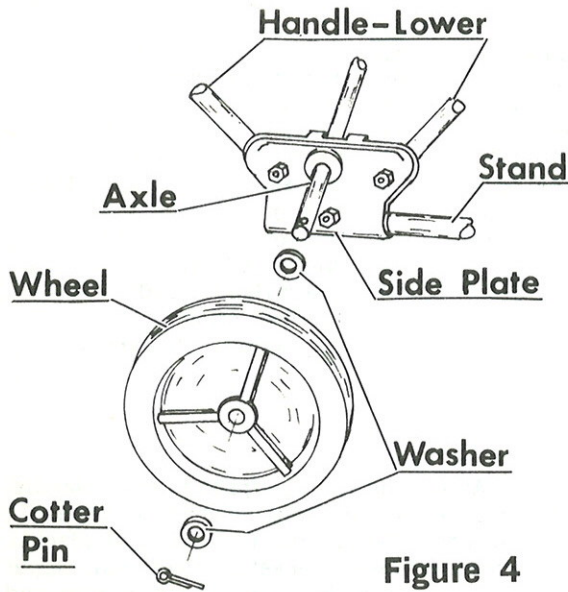


Figure 4

Ref. Fig. 2 and Photo of Lawn Cart on front page, spread the Handles open as far as they will open (approx. 90°).

Fig. 5 - Basket-Canvas, place the Rod Ends in the Dowel Rod Brackets on the Handles and let the Basket hang.

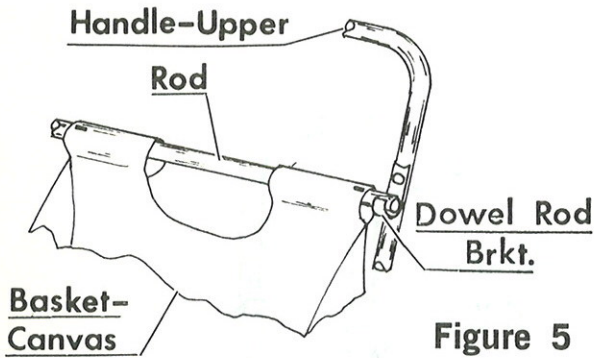


Figure 5

Fig. 6 - Before snapping the Handles together, remove the Dowel Rod in the Lower Dowel Rod Bracket and place it on top of the Dowel Rod in the top Dowel Rod Bracket. Now the Handles will snap together.

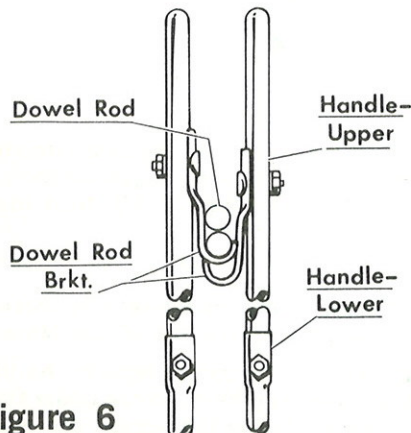


Figure 6

## PLASTIC BAG ATTACHMENT

Fig. 7 & 8 - Place the Cord over a Support Hook on the Bag Support Weldment, then insert the Hooks in the holes on the Handle-Upper. Now put the Disposable Plastic Bag inside of the Bag Support Weldment, hanging the lip of the Bag over the outside of the Support, then stretch the Cord over the Support, holding the Bag in place.

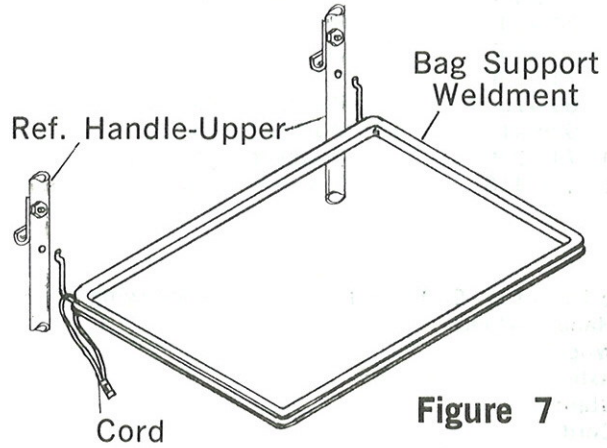


Figure 7

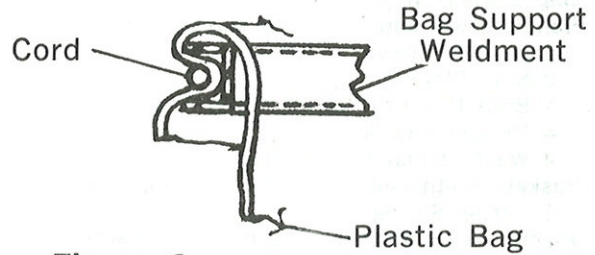


Figure 8

The Yard Boy Card has many uses. Load its heavy-duty Canvas Basket with anything from garden debris to bulky items. Remove Bag and use as a log carrier. Fold Cart, and its a utility hand truck. Bag Support Weldment holds disposable plastic bag for one handling trash removal.

## Yard Boy Cart

Utility Hand Truck



Log Carrier



Plastic Bag Holder