



Electronic Service Manuals

This electronic document is provided as a service to our customers. We do not create the contents of the information contained in this document. Should you have detailed questions pertaining to the information contained in this document, you may contact Michco, or the manufacturer which provided the original information in this electronic deliverable. Michco's only part in this electronic deliverable was the electronic assembly process. By providing this manual on line we are not guaranteeing parts availability.

You may contact Michco through the following methods:

Phone (517) 484-9312 or (800) 331-3339

2011 N. High St. -- Lansing, Michigan -- 48906

Fax: (517) 484-9836

Email: CustServe@Michco.com

Web site: www.Michco.Com

Parts Web site: www.FloorMachineParts.Com

Order Parts on Line at:

www.FloorMachineParts.Com

Directly to Parts & Service:

By Email: **Shop@Michco.com**

By Fax: (517) 702-2041

By Voice: Use numbers above.

Serving the Cleaning Industry Since 1922

Notice: All copyrighted material remains property of original owners, all trademarks are property of respective owners. Manuals are subject to Manufacturer's reproduction limitations. Originals or reproductions were provided by manufacturers through a request. We make no warranty as to the correctness of information provided in this document and you assume all risk. By placing these manuals on line we are not declaring our corporation to be an manufacturer authorized dealer or provider, please check our web site for authorized manufacturers we represent.

OPERATING INSTRUCTIONS AND PARTS LIST



PS-16725 POWER SWEEP



NOTICE: These instructions were written to assist you in assembling your Lawn Sweeper quickly and correctly. Read instructions thoroughly before attempting assembly so that you are familiar with the complete procedure.

PARKER SWEEPER COMPANY

BOX 720

SPRINGFIELD, OHIO

ASSEMBLY INSTRUCTIONS

1. Remove sweeper from carton and set on ground in an upright position. Loosen large wing nut, Ref. No. 7, Fig. 2, and let engine tilt back. Bring upper handle, Ref. No. 36, Fig. 2, up over engine and back until it lies on the ground.
2. The bolts and nuts, Ref. Nos. 4 and 5, Fig. 2, should be assembled so that heads are on inside of handle. Bring upper handle, Ref. No. 36, Fig. 2, into its proper position so that it nests with the two lower handles, Ref. No. 10, Fig. 2, and tighten bolts and nuts securely.
3. Place one (1) Jam Nut, Ref. No. 35, Fig. 2, on both upper clutch rod, Ref. No. 29, Fig. 2, and lower

clutch rod, Ref. No. 23, Fig. 2. Connect upper and lower clutch rods together with coupling nut, Ref. No. 24, Fig. 2, and tighten both jam nuts against coupling nut.

4. Place basket, Ref. No. 14, Fig. 2, into brackets.
5. Change engine mounting base to middle position if not already there, as shown on front cover so that engine is approximately level — 3 positions are provided so that engine is always approximately level throughout the entire range of brush adjustment.

READ THE OPERATING INSTRUCTION FOR ADJUSTMENT AND MAINTENANCE.

OPERATING INSTRUCTIONS

IMPORTANT: Read engine manual carefully before operating, and add oil and gasoline to engine as instructed. When ready to start engine, be sure that clutch is disengaged.

BRUSH HEIGHT ADJUSTMENT. Loosen large wing nut, Ref. No. 7, Fig. 2. To raise brushes to extreme height, pull sweeping unit forward as far as slots in brush adjustment brackets, Ref. No. 9, Fig. 2, will permit. To lower brushes to lowest position, push sweeping unit backwards as far as slots will permit. Secure wing nut when desired brush adjustment is obtained.

1. For grass clippings or leaves, adjust hood extension, Ref. No. 10, Fig. 3, and brushes to highest positions. After trial run on lawn, should the settings be too high, lower slightly and try again until correct setting is found. Brush life may be prolonged by adjusting so contact with ground is light.
2. For patio, sidewalk, and driveway sweeping, adjust hood extension to bottom position. Also adjust brushes so they just contact pavement.

After brush has been set to desired height level engine if necessary. **REMEMBER, ALWAYS KEEP ENGINE APPROXIMATELY LEVEL AT ALL TIMES.** To do this, loosen wing nut, Ref. No. 7, Fig. 3, and pivot engine up or down to desired slot in brace, Ref. No. 14, Fig. 3, by changing position of pin, Ref. No. 36, Fig. 3.

NOTE: IF SWEEPER PUSHES HARD, THE BRUSHES OR HOOD EXTENSION IS SET TOO LOW.

Basket. Basket is removable for dumping.

Maintenance. Oil sweeper at point marked "oil" (see Fig. 1), every time machine is used or twice a day when machine is used all day. Wet grass clippings have a tendency to dry and adhere to inner face of hood; it is important to keep this face clean at all times for good sweeping action. The canvas will give longer life if it is never folded when wet or damp.

Care and Replacement of Brushes. The brushes used on this sweeper are made of the finest bristles that will give years of service if given proper care. Should they become bent from constant use, it is possible to straighten bristles by reversing the brushes on the reel shaft, so that the sweeping pressure is applied from the opposite side.

To reverse or replace brushes:

1. Remove cap screws & clamps items 8 & 24 Fig. 3 which hold the brush strips to the reel shaft brackets. Reverse and replace the brush strip and clamps, then retighten the cap screws.

ALWAYS GIVE THE FOLLOWING INFORMATION WHEN ORDERING REPAIR PARTS:

1. PART NUMBER (Not Ref. No.)
2. QUANTITY NEEDED
3. DESCRIPTION OF PART
4. MODEL No. PS-16725

If unable to obtain parts locally, write down above information and send to:
PARKER SWEEPER CO., BOX 720, SPRINGFIELD, OHIO 45501

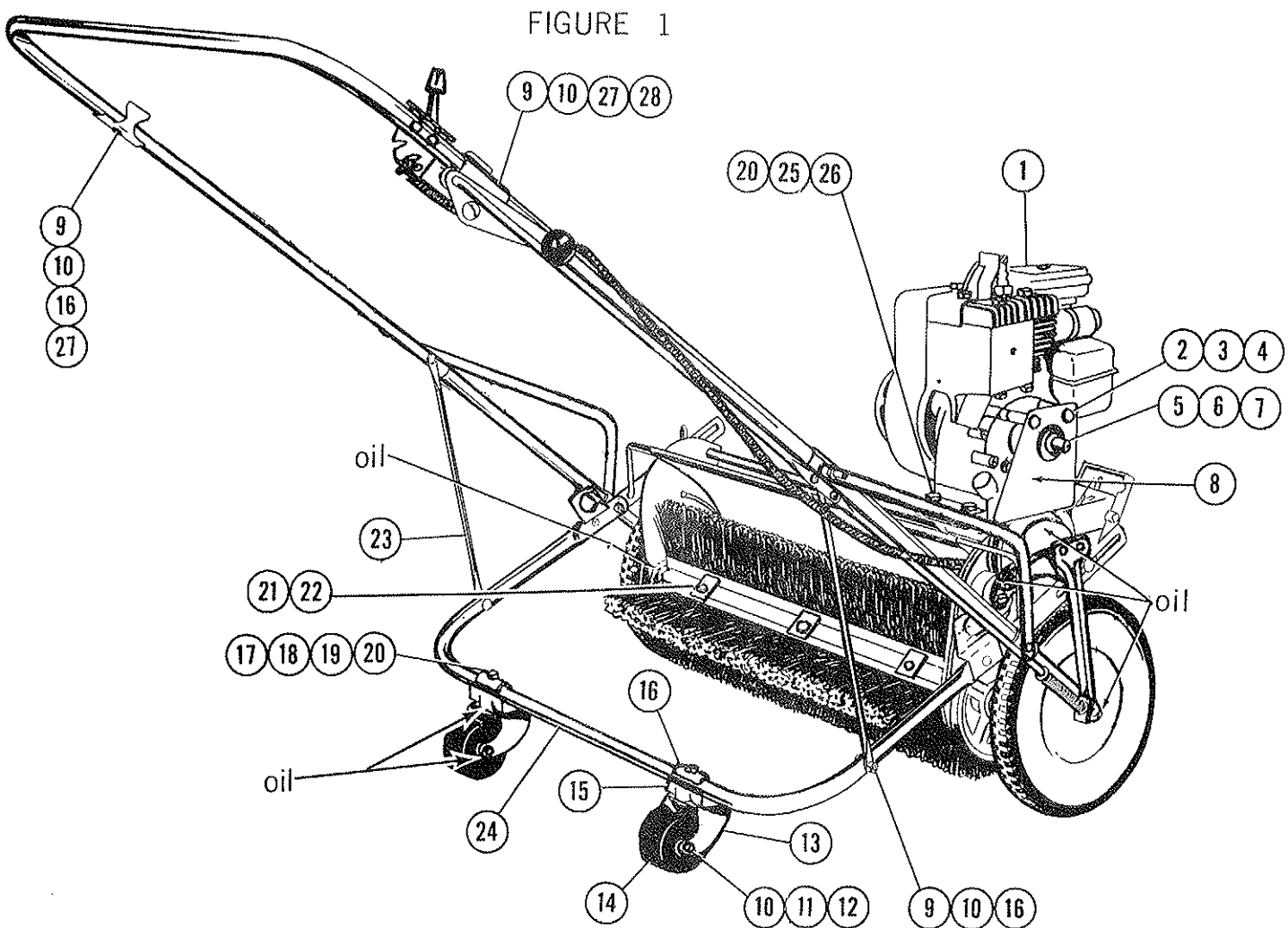
Your unit is right hand (R.H.) or left hand (L.H.) as you stand behind it.

IMPORTANT

SUPPORT FRAME AND ENGINE ASSEMBLY

Figure No. 1

| Ref. No. | Part No. | Qty. Per Unit | Description | Ref. No. | Part No. | Qty. Per Unit | Description |
|----------|-------------|---------------|---|----------|-----------|---------------|--|
| 1 | 62-97-A | 1 | Engine | 15 | 59-68-B | 2 | Pivot Block USE 80-365-A |
| 2 | 60-516-32 | 2 | Hex. Hd. Bolt $\frac{5}{16}$ -24 x 2 | 16 | 59-77-A | 5 | Clamp |
| 3 | 936-516 | 2 | Lock Washer $\frac{5}{16}$ | 17 | 65-516-32 | 2 | Hex. Hd. Bolt $\frac{5}{16}$ -18 x 2 |
| 4 | 60-58-A | 2 | Spacer | 18 | 55-156-A | 4 | Washer - Special |
| 5 | 60-55-A | 1 | Pulley 2" O.D. x $\frac{5}{8}$ Bore | 19 | 54-227-A | 2 | Spacer |
| 6 | 564-C-516-5 | 1 | Screw - Allen Hd. $\frac{5}{16}$ -18 x $\frac{5}{16}$ | 20 | 365-516 | 6 | Hex. Nut $\frac{5}{16}$ -18 |
| 7 | 48-277-A | 1 | Key $\frac{3}{16}$ x $\frac{3}{16}$ x $1\frac{1}{2}$ | 21 | 61-416-8 | 6 | Bolt-Hex. Hd. $\frac{1}{4}$ - 28 x $1\frac{1}{2}$ |
| 8 | 60-27-B | 1 | Belt Guard | 22 | 69-04-A | 6 | Clamp-Brush Bracket |
| 9 | 65-416-20 | 4 | Carriage Bolt $\frac{1}{4}$ -20 x $1\frac{1}{4}$ | 23 | 66-129-B | 2 | Support Handle |
| 10 | 365-416 | 6 | Lock Nut $\frac{1}{4}$ -20 | 24 | 62-40-F | 1 | Caster Support Frame Assy. |
| 11 | 45-71-A | 2 | Bushing | 25 | 945-516 | 4 | Washer S.A.E. $\frac{5}{16}$ |
| 12 | 65-416-44 | 2 | Bolt - Hex. Hd. $\frac{1}{4}$ -20 x $2\frac{3}{4}$ | 26 | 65-516-24 | 4 | Hex. Head Bolt $\frac{5}{16}$ -18 x $1\frac{1}{2}$ |
| 13 | 60-29-B | 2 | Caster Fork | 27 | 60-26-B | 2 | Bracket-Basket Upper |
| 14 | 63-52-A | 2 | Roller | 28 | 57-182-A | 1 | Bracket |



SUPPORT FRAME AND ENGINE ASSEMBLY

Figure 2

| Ref. No. | Part No. | Qty. Per Unit | Description | Ref. No. | Part No. | Qty. Per Unit | Description |
|---------------|---------------------|---------------|---|---------------|----------------------|---------------|---|
| 1 | 66-132-A | 1 | Throttle Control Assembly | 22 | 55-161-A | 1 | Washer—Special |
| 2 | 516-10-16 | 2 | Screw—Oval Hd. #10-24 x 1 | 23 | 68-25-A | 1 | Clutch Rod—Lower |
| 3 | 365-10 | 2 | Nut—Hex Lock #10-24 | 24 | 68-26-A | 1 | Coupling Nut |
| 4 | 65-416-28 | 2 | Bolt—Hex Hd. ¼-20 x 1½ | 25 | 60-46-A | 1 | Spring |
| 5 | 365-416 | 2 | Nut—Hex Lock ¼-20 | 26 | 66-218-B | 1 | Crank—Bell Clutch L.H. Half |
| 6 | 60-57-A | 1 | Adjusting Bolt | 27 | 66-219-B | 1 | Crank—Bell Clutch R.H. Half |
| 7 | 351-516-40 | 1 | Wing-Nut ¾-18 | 28 | 68-28-A | 1 | Cupped Spring Washer |
| 8 | 945-516 | 3 | Washer—S.A.E. ¾ | 29 | 68-24-A | 1 | Clutch Rod—Upper |
| 9 | 60-21-A | 2 | Brush Adjusting Bracket | 30 | 65-516-12 | 1 | Bolt—Hex Hd. ¾-18 x ¾ |
| 10 | 66-126-B | 2 | Lower Handle | 31 | 946-816-16 | 1 | Washer—Fiber ½ x 1" |
| 11 | 59-77-A | 4 | Clamp | 32 | 68-27-A | 1 | Clutch—Handle |
| 12 | 65-516-32 | 2 | Bolt—Hex Hd. ¾-18 x 2 | 33 | 55-130-A | 1 | Plastic Knob |
| 13 | 54-227-A | 3 | Spacer | 34 | 65-516-16 | 3 | Bolt—Hex Hd. ¾-18 x 1" |
| 14 | 66-133-C | 1 | Basket Assembly | 35 | 340-516 | 4 | Jam Nut—Hex ¾-18 |
| 15 | 365-516 | 4 | Nut—Hex Lock ¾-18 | 36 | 66-128-C | 1 | Upper Handle |
| 16 | 510-716-36 | 1 | Screw—82° Flat Hd. Mach. ¾-20 N.F. x 2½ | 37 | 60-52-B | 2 | Basket—Rod |
| 17 | 945-716 | 1 | Washer—Flat S.A.E. ¾ | 38 | 364-516 | 2 | Nut—Hex Lock ¾-18 Thin Type |
| 18 | 60-64-A | 1 | Bushing | 39 | 66-211-RC | 1 | Support—Basket Canvas R.H. (Not Shown) |
| 19 | 936-716 | 1 | Washer—Lock ¾ | 40 | 66-212-LC | 1 | Support—Basket Canvas L.H. (Shown) |
| 20 | 345-716 | 1 | Hex Jam Nut—Light ¾-20-N.F. | | | | |
| 21 | 60-72-A | 1 | Idler Pulley Assy. | | | | |

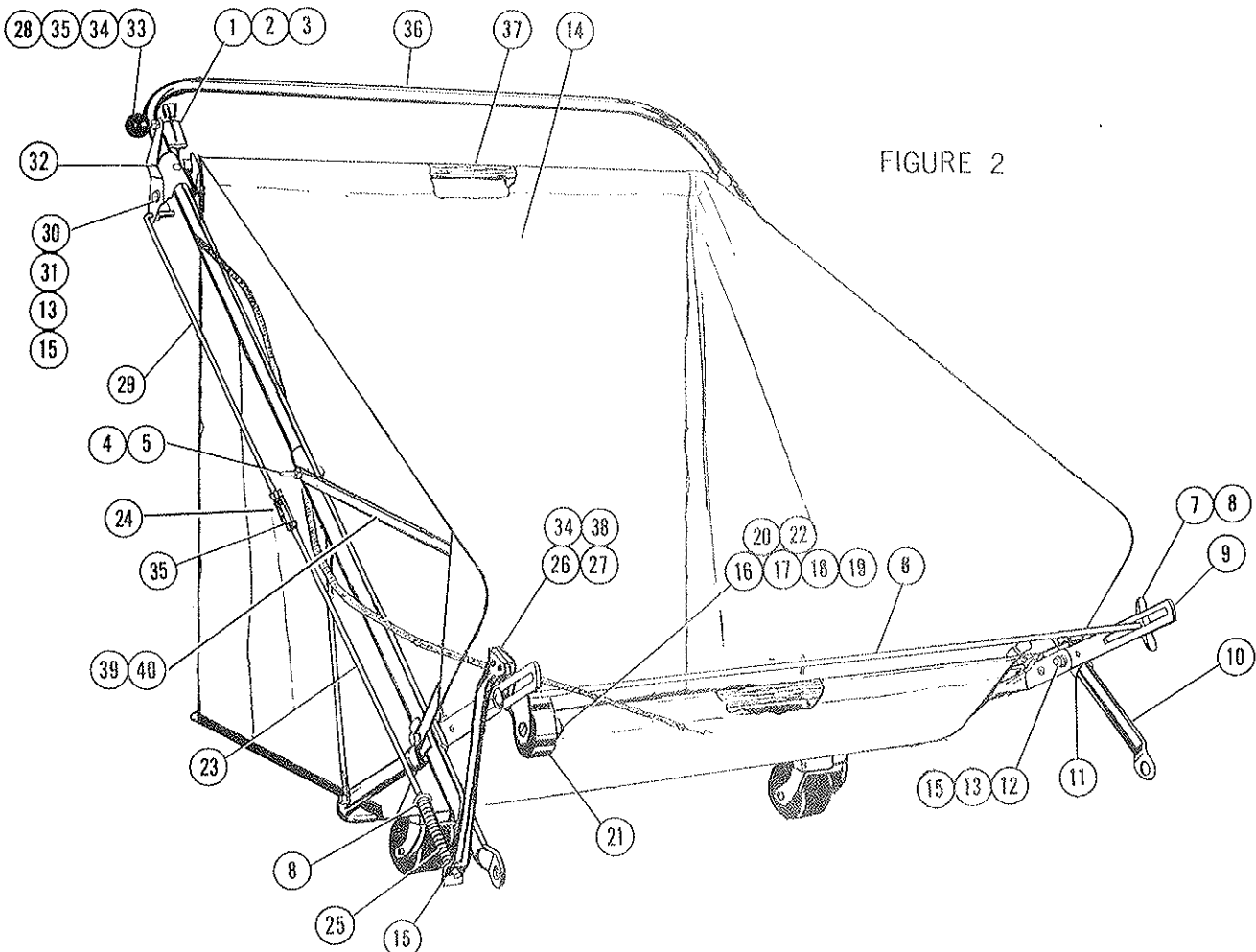


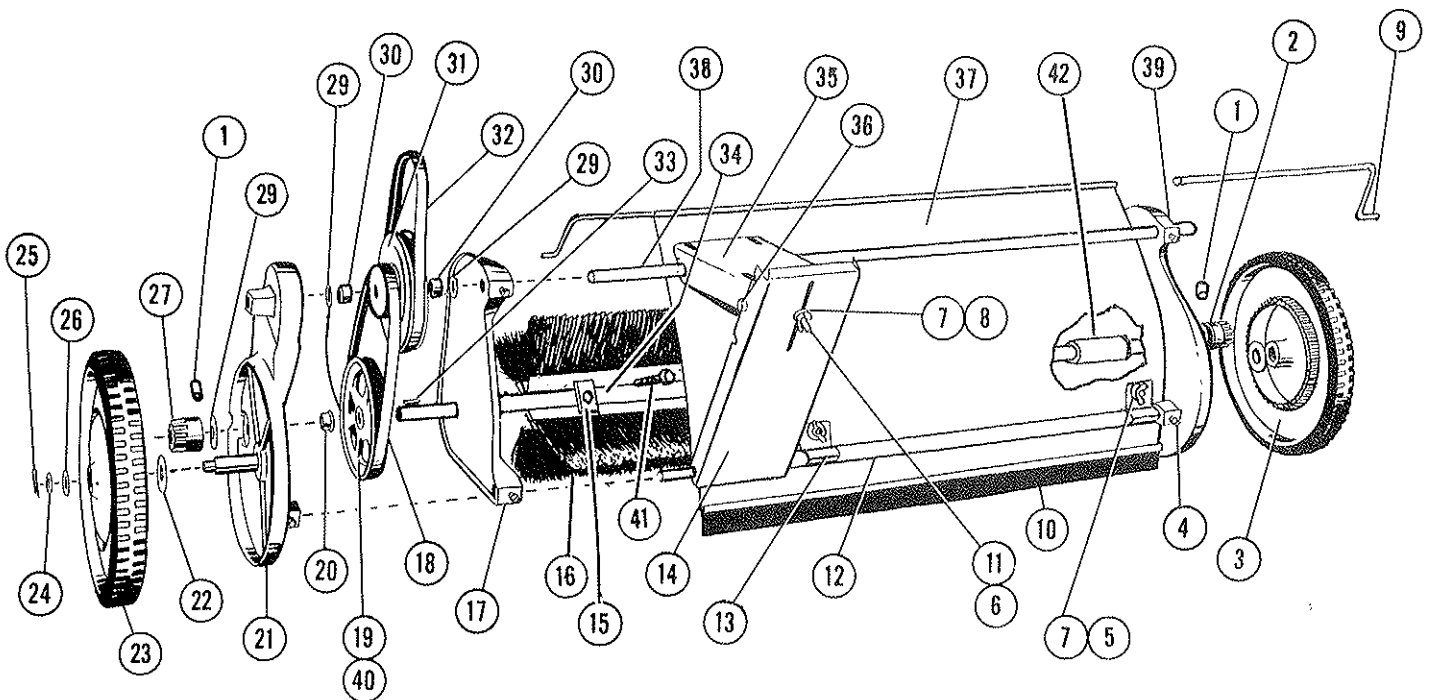
FIGURE 2

SWEEPER UNIT ASSEMBLY

Figure No. 3

| Ref. No. | Part No. | Qty. Per Unit | Description | Ref. No. | Part No. | Qty. Per Unit | Description |
|----------|--------------|---------------|---|----------|-------------|---------------|--|
| 1 | 45-25-A | 2 | Pawl | 21 | 68-46-RD | 1 | Right Hand Side Plate |
| 2 | 45-36-18-RC | 1 | Pinion — Left Hand | 22 | 946-1216-24 | 2 | Fiber Washer $\frac{3}{4}$ x $1\frac{1}{2}$ |
| 3 | 49-377-C | 2 | Wheel | 23 | 63-224-B | 2 | Tire |
| 4 | 560-C-516-10 | 6 | Set Screw $\frac{5}{16}$ -18 x $\frac{5}{8}$ | 24 | 46-81-A | 2 | Special Washer |
| 5 | 70-416-12 | 2 | Carriage Bolt $\frac{1}{4}$ -20 x $\frac{3}{4}$ | 25 | 380-432-12 | 2 | Cotter Pin $\frac{1}{8}$ x $\frac{3}{4}$ |
| 6 | 365-416 | 1 | Nut Hex Lock $\frac{1}{4}$ -20 | 26 | 946-816-16 | 2 | Fiber Washer $\frac{1}{2}$ x 1 |
| 7 | 351-416-18 | 3 | Wing Nut $\frac{1}{4}$ -20 x $1\frac{1}{8}$ | 27 | 45-36-19-LC | 1 | Pinion — Right Hand |
| 8 | 945-416 | 1 | Washer S.A.E. $\frac{1}{4}$ | 29 | 55-161-A | 5 | Special Washer |
| 9 | 63-236-B | 2 | Rod — Hood Control | 30 | 56-122-A | 2 | Bearing — Bronze |
| 10 | 60-45-C | 1 | Rubber Hood Extension | 31 | 56-121-B | 1 | 2-Step Pulley |
| 11 | 515-416-32 | 1 | Rd. Hd. Screw $\frac{1}{4}$ -20 x 2 | 32 | 60-56-A | 1 | Upper V-Belt 4L220-A-Sec. |
| 12 | 60-50-B | 1 | Bottom Tie Rod | 33 | 280-9 | 1 | Woodruff Key No. 9 |
| 13 | 60-22-B | 2 | Hood Clamp | 34 | 69-15-B | 1 | Reel Shaft |
| 14 | 60-24-C | 1 | Adjustable Engine Brace | 35 | 66-223-B | 1 | Engine Mtg. Weldment |
| 15 | 69-04-A | 6 | Clamp-Brush Bracket | 36 | 60-65-A | 1 | Adjustable Engine Base Pin |
| 16 | 1200-24-B | 4 | Brush Strip | 37 | 66-206-D | 1 | Hood |
| 17 | 60-20-D | 1 | Inner Side Plate | 38 | 60-51-B | 1 | Adjustable Tube |
| 18 | 54-128-A | 1 | Lower V-Belt 4L270-A-Sec. | 39 | 68-4-LD | 1 | Left Hand Side Plate <i>USE 71-65-LD</i> |
| 19 | 60-54-A | 1 | Pulley 5.25 O.D. x $\frac{5}{8}$ Bore | 40 | 564-C-516-6 | 1 | Screw—Allen Hd. $\frac{5}{16}$ -18 x $\frac{3}{8}$ |
| 20 | 68-60-A | 2 | Bearing — Ball | 41 | 61-416-8 | 6 | Bolt—Hex Hd. $\frac{1}{4}$ -28 x $\frac{3}{8}$ |
| | | | | 42 | 69-25-A | 1 | Spacer—Reel Shaft |

FIGURE 3



| Part No. | Description | QTY | Notes |
|----------|-------------|-----|-------|
| 1 | ... | 1 | |
| 2 | ... | 1 | |
| 3 | ... | 1 | |
| 4 | ... | 1 | |
| 5 | ... | 1 | |
| 6 | ... | 1 | |
| 7 | ... | 1 | |
| 8 | ... | 1 | |
| 9 | ... | 1 | |
| 10 | ... | 1 | |
| 11 | ... | 1 | |
| 12 | ... | 1 | |
| 13 | ... | 1 | |
| 14 | ... | 1 | |
| 15 | ... | 1 | |
| 16 | ... | 1 | |
| 17 | ... | 1 | |
| 18 | ... | 1 | |
| 19 | ... | 1 | |
| 20 | ... | 1 | |

