



Electronic Service Manuals

This electronic document is provided as a service to our customers. We do not create the contents of the information contained in this document. Should you have detailed questions pertaining to the information contained in this document, you may contact Michco, or the manufacturer which provided the original information in this electronic deliverable. Michco's only part in this electronic deliverable was the electronic assembly process. By providing this manual on line we are not guaranteeing parts availability.

You may contact Michco through the following methods:

Phone (517) 484-9312 or (800) 331-3339

2011 N. High St. -- Lansing, Michigan -- 48906

Fax: (517) 484-9836

Email: CustServe@Michco.com

Web site: www.Michco.Com

Parts Web site: www.FloorMachineParts.Com

Order Parts on Line at:

www.FloorMachineParts.Com

Directly to Parts & Service:

By Email: **Shop@Michco.com**

By Fax: (517) 702-2041

By Voice: Use numbers above.

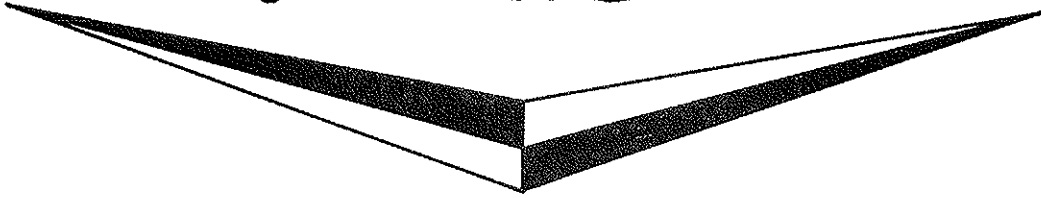
Serving the Cleaning Industry Since 1922

Notice: All copyrighted material remains property of original owners, all trademarks are property of respective owners. Manuals are subject to Manufacturer's reproduction limitations. Originals or reproductions were provided by manufacturers through a request. We make no warranty as to the correctness of information provided in this document and you assume all risk. By placing these manuals on line we are not declaring our corporation to be an manufacturer authorized dealer or provider, please check our web site for authorized manufacturers we represent.

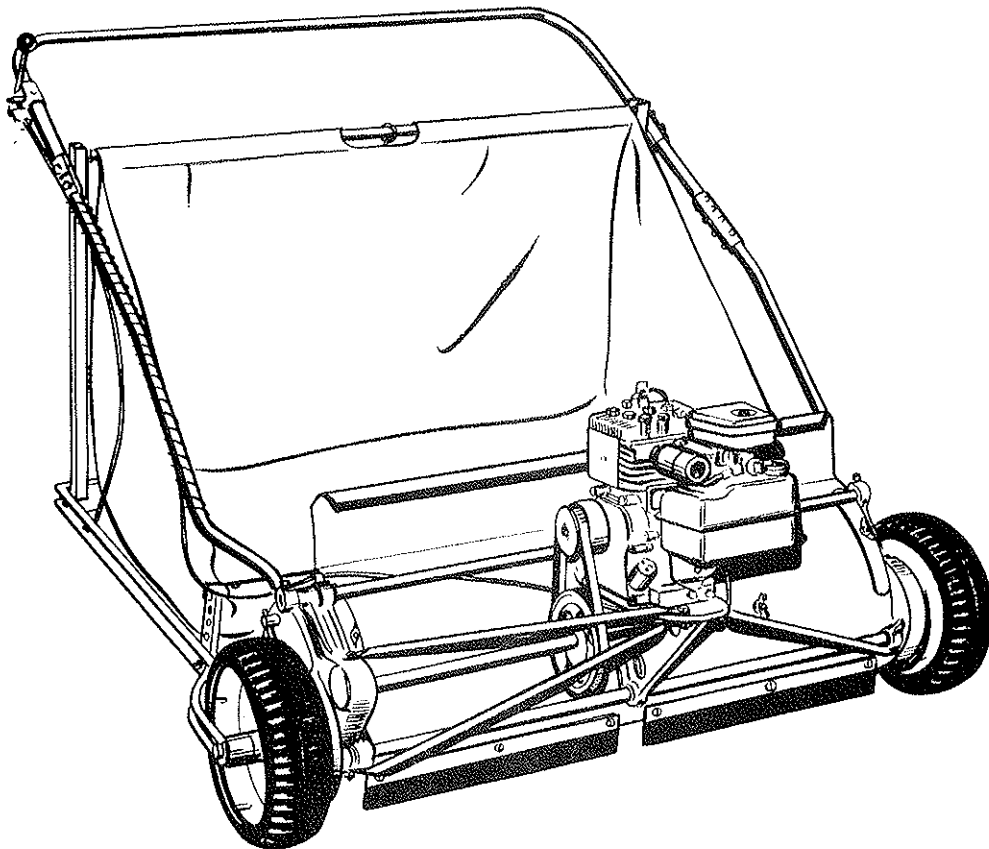
OWNERS GUIDE



Parker



PM- 16436 PARKMASTER 36" LAWN SWEEPER



NOTICE: These instructions were written to assist you in assembling your Parkmaster Lawn Sweeper quickly and correctly. Read instructions thoroughly before attempting assembly so that you are familiar with the complete procedure.

PARKER SWEEPER COMPANY

BOX 720

SPRINGFIELD, OHIO 45501

UNPACKING INSTRUCTIONS

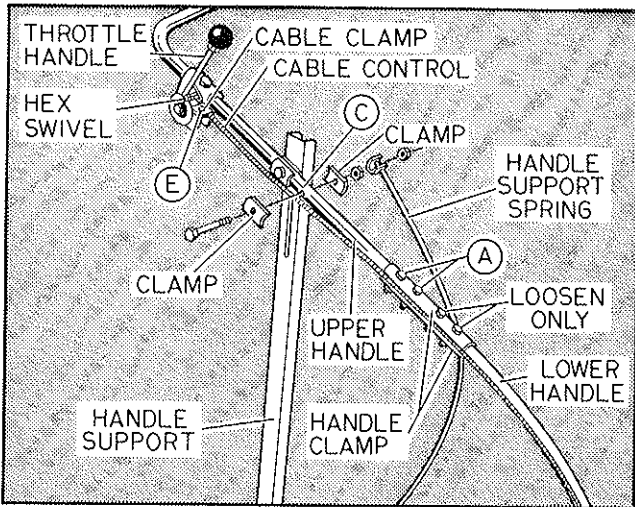
PM-16436

NOTE: Refer to the exploded view and reference numbers for parts identification.

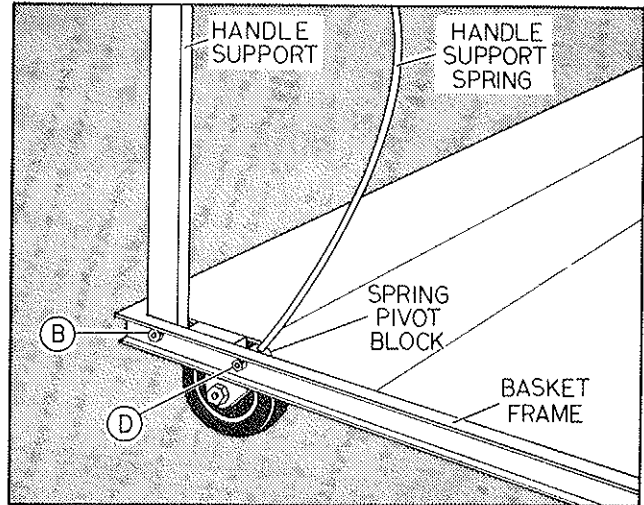
1. Please read these instructions through very carefully before attempting to set up and run. After reading instructions, proceed with set-up as follows:
2. After removing carton from base, lower sweeper onto casters and discard base.
3. Unwrap canvas and check items inside with the following list:
 - 1 Wind Apron
 - 2 Handle Support Springs with Hardware
 - 1 Tube containing Cable Spring
 - 1 Sack containing Clutch and Allen Wrench

4. Check items in envelope with following list:
 - 1 Owners Guide
 - 1 Guarantee Card

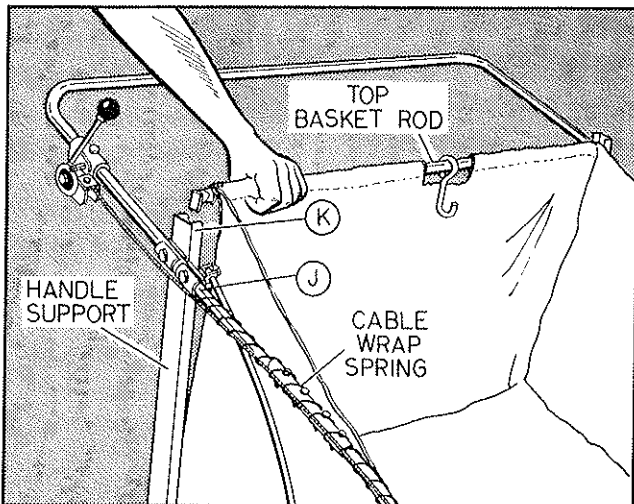
5. Remove the tape that holds the handle assembly to the basket frame.



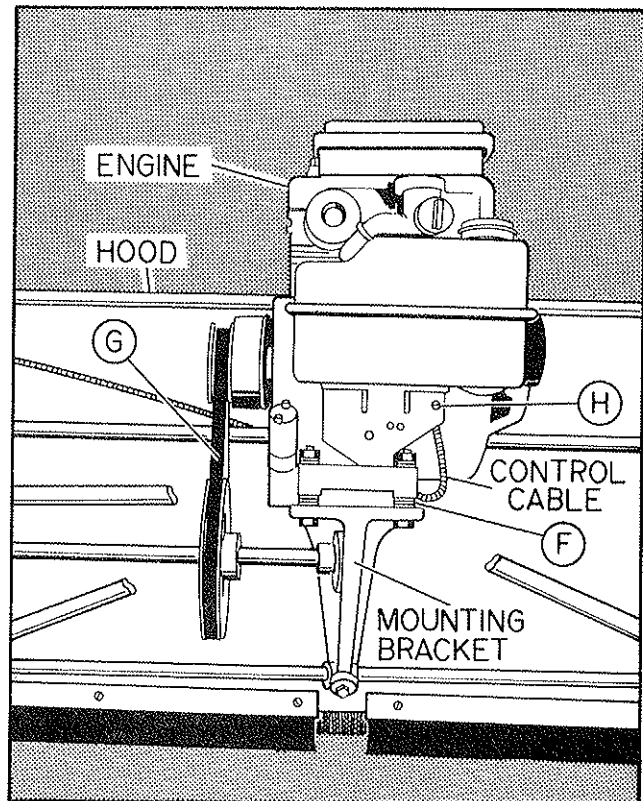
View 1



View 2



View 3



View 4

ASSEMBLY INSTRUCTIONS

PM-16436

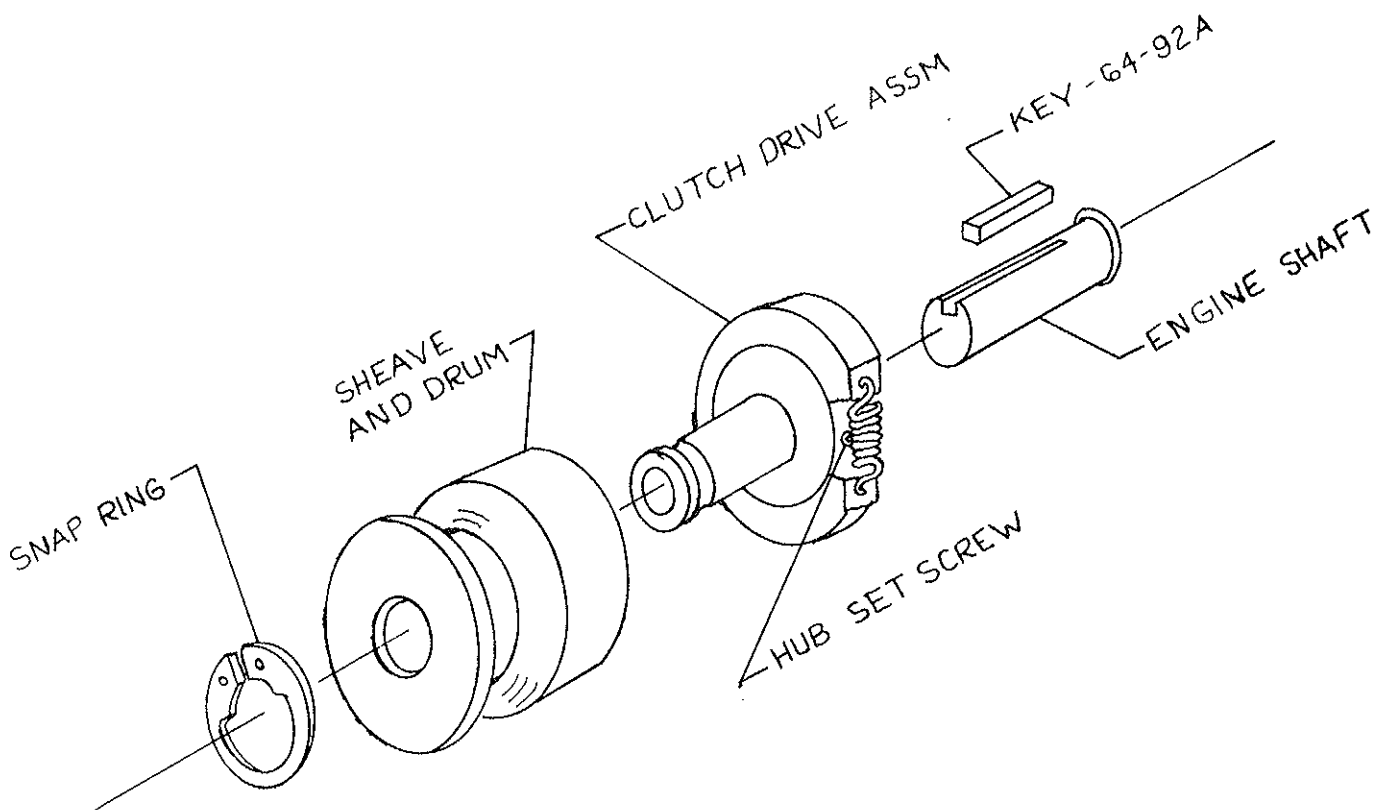
1. After removing machine from carton, remove the rolled up canvas basket and lay aside.
2. Lift the upper handle section (Ref. No. 48, Fig. 1), pull it straight back, and lay it at the rear of the machine with throttle handle up.
3. Remove the two hex head bolts that are in each end of the upper handle. Loosen the two bolts that hold handle clamps to the lower handle (see View 1).
4. Insert the ends of the upper handle section into the loosened clamps, making sure the throttle handle is up. Replace the two hex head bolts through handle and clamps at point "A," View 1. Put on lock nuts, tighten. Repeat on opposite side.
5. At point "B," View 2, remove the hex head bolt and spacer from the basket frame. Place the small end of the spacer into the hold at the bottom end of the handle support from the inside. Place the hex head bolt through the spacer and into the basket frame hole from which you removed it, put on lock nut and tighten. Repeat on opposite side.
6. Unroll canvas basket and, remove all hardware and parts from both handle support spring assemblies.
7. Assemble the springs to the machine in the following manner: See Point "C," View 1, place a clamp on bolt and place bolt through handle from outside, place other clamp on bolt, put on hex jam nut and tighten. Place handle support spring on bolt with loop to rear, put lock nut on bolt and tighten until nut is flush with end of bolt. Repeat on opposite side.
8. Turn the pivot block at point "D," View 2, so that the hole in it is up and turned forward to about 45 degrees with the ground. Grasp the lower part of the handle support spring firmly and insert the end into the spring pivot block hole. Do this on both sides of the machine.
9. Loosen the rd. head screw which is located in the end of the hex swivel (see View 1). Make sure that this swivel turns freely.
10. At point "E," View 1, loosen the rd. head screw that holds the cable clamp. Turn this clamp around so that the bend is to the inside of the sweeper.
11. Place control cable under cable clamp and control wire into the small hole in the hex swivel. Tighten clamp onto cable making sure cable end is flush with clamp. Edge toward hex swivel.
12. Push the throttle handle forward as far as it will go allowing the control wire to slip through the hex swivel. Do not tighten the control wire screw and hex nut at this time.
13. Loosen the adjusting screws (Ref. No. 21, Fig. 1) on each side of machine and position the sweeping unit so that the engine mounting bracket (View 4) is level with the ground.
14. Position engine on mounting bracket with belt on sheave and clutch and with three (3) flat washers between engine base and mounting bracket, point "F," View 4; insert engine mounting bolts up through mounting bracket and through holes in engine base. Place two (2) flat washers over each bolt and put lock nuts on bolts, see sheet to install clutch on engine. Make sure the belt is in line, point "G," View 4. Tighten the nuts.
15. Insert offset end of control wire into the carburetor control arm. Position the control cable between the engine and the gas tank. Clamp cable to tank bracket at point "H," View 4, so that about one inch of cable extends above seam around center of gas tank.
16. Now pull the carburetor control up until it stops. Hold the hex swivel (View 1) from turning while you tighten the control wire screw and then the hex nut. Cut off extra control wire about a half inch back from the hex swivel. Again holding hex swivel from turning, bend projecting half inch of wire downwards.
17. Remove the cable wrap spring from the cardboard tube. Wind spring over handle and control cable, starting at point "J," View 3, just forward of the handle support spring. The control cable should run along the outside of the handle, nesting into the slot formed by the two handle clamps. Continue winding down the handle, ending at the lower curve of the handle.
18. Install the basket as follows: Place the top basket rod (View 3) into the slots of the handle supports at point "K," View 3, and the bottom basket rod into the lower basket hangers (Ref. No. 49, Fig. 1). Make sure that the basket is turned right side out.
19. Install the wind apron as follows: Place the metal edge over the curved lip at the top of the hood (see View 4) and place the hook at the end of the elastic cord over the handle.

CLUTCH INSTALLATION

PM-16436

TO INSTALL CLUTCH ON ENGINE

1. Remove Snap Ring from Clutch Assembly.
2. Slide Sheave and Drum off Clutch Drive Assembly.
3. Insert Key, 64-92A into Engine Shaft.
4. Install Clutch Drive on Shaft, but do not tighten Set Screw.
5. Place Sheave and Drum over Clutch Assembly and line up Clutch Sheave with Jack Shaft Sheave.



6. Remove Sheave and Drum and tighten Hub Set Screw being careful not to move Clutch Assembly.
7. Apply Loctite to threads of Set Screw before tightening.
8. Place Sheave and Drum on Clutch Drive Assembly. Recheck alignment of belt and Jack Shaft Sheave. If o.k. replace Snap Ring.

October 7, 1969

OPERATING INSTRUCTIONS

PM-16436

1. Refer to the Engine Manual for operation and maintenance instructions. Manual is packed with the engine.
2. Refer to Fig. 3 below. Remove tag from pin clutch. To engage pin clutch, pull knob out turning it a quarter turn, either direction, and it will drop into the long groove, engaging part 49-255-A. To disengage, pull knob out and turn to allow spring pin 47-89-A to engage short slot. Be sure spring pin drops into slot. If it is permitted to rest on top of insert it is easily dislodged and can cause extensive damage. Pin clutch is located R. H. end of brush shaft.

IMPORTANT: Always stop engine before engaging or disengaging pin clutch.

3. **IMPORTANT:** Every time engine is started, check that the throttle control handle is in full back position.
4. Start your engine. Adjust engine idle speed while the throttle control lever is still in full back position. Stop the engine.
5. Correct brush height is always relative to the conditions of the turf on which you are sweeping. The best thing to remember is always have your brushes adjusted as high as possible but still sweeping. Having your engine level is a good trial adjustment. Also, the hood should be adjusted as high as possible without allowing debris to throw ahead of the sweeper. To adjust the hood, loosen the wing nuts (Ref. No. 5, Fig. 1) which are located at the outside edge of the hood. Raise or lower the hood to the desired height and tighten the wing nuts.
6. As the brushes wear or bend over with use and the brush tips do not contact the secondary hood (Ref. No. 2, Fig. 1) the sweeping action will reduce to the extent that the debris will not flow to the rear of the basket. When this occurs, loosen the lock nuts which are located about ten inches from the side plates towards the center of the hood so that the patented secondary hood springs out towards the brushes until the brush tips lightly touch. When the brushes wear down to a point that they no longer will touch the secondary hood with it fully adjusted, replace with new brushes.

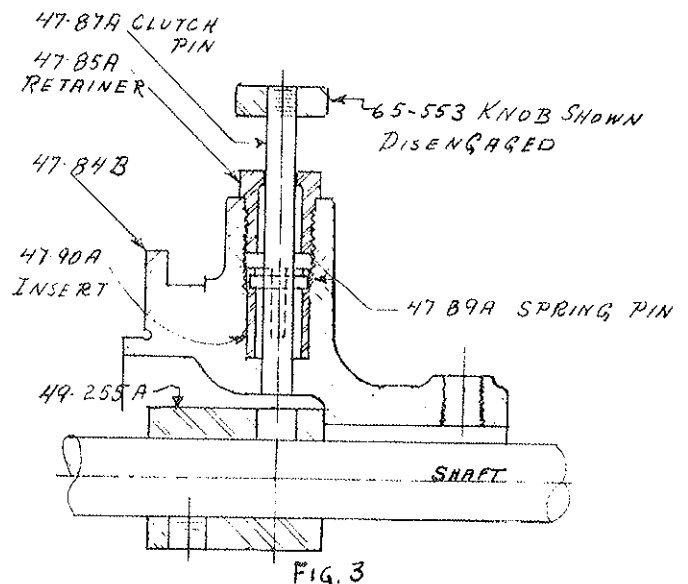
7. To tighten the drive belt (Ref. No. 17, Fig. 1) raise the engine by transposing the extra flat washers provided from the top of the engine base to under the engine base.

8. Lubricate as follows: Refer to the Engine Manual for the engine.

Grease fittings are provided at each wheel hub, and at each end of the brush reel shaft. These points are lubricated with a grease gun. ALL of the other moving parts should be oiled with a drop or two of SAE-20 oil whenever used or about every other day while the sweeper is being used. To oil the wheel gears (Ref. No. 8, Fig. 3) simply drop No. 90 gear oil into the two oil holes that are provided in each side plate.

9. Keep your sweeper in good adjustment and well lubricated. Store in a clean, dry place when not in use. For winter storage, drain the gas tank and run the engine to empty the carburetor and fuel line.

10. Care and Replacement of Brushes. The brushes used on this sweeper are made of the finest bristles that will give years of service if given proper care. Should they become bent from constant use it is possible to straighten by reversing the brushes on the reel shaft, so that the sweeping pressure is applied to the opposite side. Remove brush strips by loosening the clamps item 11, Fig. 2.



CAUTION: The brush fiber and basket material will burn if in contact with open flame. Avoid dumping basket over fire.

PM-16436

FIGURE 1

PARTS LIST

Ref. No.	Part No.	Qty. Per Unit	Description of Part	Ref. No.	Part No.	Qty. Per Unit	Description of Part
1	49-256-A	1	Rod — Top Tie	35	56-52-B	1	Brace — Top
2	64-107-C	1	Hood — Auxiliary Assembly	36	55-130-A	1	Knob — Handle Ball
3	49-269-B	2	Brace — Bottom Tie Rod	37	515-8-8	2	Screw — Rd. Hd. #8-32 x 1/2
4	365-416	11	Nut — Hex Lock 1/4-20	38	62-52-A	2	Caster — 5" Wheel
5	351-516-20	2	Nut — Wing 3/8-18 x 1 1/4 Span	39	505-616-20	8	Screw — Flat Hd. Machine 3/8-16 x 1 1/4
6	49-251-B	1	Extension — Metal Hood R.H.	40	365-616	8	Nut — Hex Lock 3/8-16
7	49-250-B	1	Extension — Metal Hood L.H.	41	945-616	8	Washer — Flat S.A.E. 3/8
8	49-249-B	1	Extension — Rubber Hood L.H.	42	49-260-A	2	Spacer
9	69-23-F	1	Hood Assembly	43	65-516-16	4	Bolt — Hex Hd. 3/8-18 x 1
10	49-257-A	1	Rod — Rear Tie	44	52-109-B	2	Support — Handle
11	49-254-B	1	Shaft — Reel	45	65-416-20	1	Bolt — Hex Hd. 1/4-20 x 1 1/4
12	49-258-A	1	Rod — Front Tie	46	54-162-A	1	Spring — Cable Wrap
13	346-416	6	Nut — Speed 1/4	47	49-248-B	1	Extension — Rubber Hood R.H.
14	65-516-12	5	Bolt — Hex Hd. 3/8-18 x 3/4	48	56-20-D	1	Handle — Upper
15	49-11-A	2	Clamp — Hood	49	52-110-A	2	Hanger — Lower Basket
16	505-416-12	6	Screw — Flat Hd. Machine 1/4-20 x 3/4	50	62-51-C	1	Basket Frame Assembly
17	54-128-A	1	V-Belt	51	49-252-B	2	Spring — Handle Support
18	51-37-A	1	Bearing — Ball	52	49-261-A	2	Block — Spring Pivot
19	365-516	18	Nut — Hex Lock 3/8-18	53	45-53-A	2	Spacer
20	20-84-6	1	Cable — Control	54	53-55-A	2	Clip — Top Basket Rod
21	56-56-A	2	Handle — Adjusting Screw Assembly	55	65-516-32	8	Bolt — Hex Hd. 3/8-18 x 2
22	55-136-A	1	Clamp — Throttle Cable	56	59-77-A	8	Clamp
23	335-8	1	Nut — Hex #8-32	57	53-44-B	4	Clamp — Handle
24	53-165-A	1	Washer — Cupped	58	560-C-516-10	7	Screw — Sq. Hd. Set 3/8-18 x 5/8
25	55-156-A	2	Washer — Special	59	49-91-LE	1	Side Plate L.H.
26	49-296-A	1	Wrench — Allen 3/2	60	564-C-516-16	3	Screw — Allen Hd. Set 3/8-18 x 1
27	55-131-B	1	Throttle Handle Assembly	61	65-416-24	8	Bolt — Hex Hd 1/4-20 x 1 1/2
28	55-132-A	1	Spacer — Throttle	62	56-28-LD	1	Handle — Lower L.H.
29	55-138-B	1	Clutch and Throttle Bracket Assembly	63	56-28-RD	1	Handle — Lower R.H.
30	49-74-D	1	Bracket — Engine Mounting	64	62-97-A	1	Engine (Briggs & Stratton)
31	380-232-8	2	Pin — Cotter 1/8 x 1/2	65	30-88-.054	1	Wire — Control
32	945-516	24	Washer — Flat S.A.E. 3/8	66	64-92-A	1	Key — Engine
33	365-8	1	Nut — Hex Lock #8-32	67	64-86-A	1	Clutch — Centrifugal
34	340-516	4	Nut — Hex Jam 3/8-18				

ALWAYS GIVE THE FOLLOWING INFORMATION WHEN ORDERING REPAIR PARTS:

1. PART NUMBER (Not Ref. No.)
2. QUANTITY NEEDED
3. DESCRIPTION OF PART
4. MODEL NO. PM-16436

If unable to obtain parts locally, write down above information and send to:
PARKER SWEEPER CO., BOX 720, SPRINGFIELD, OHIO 45501

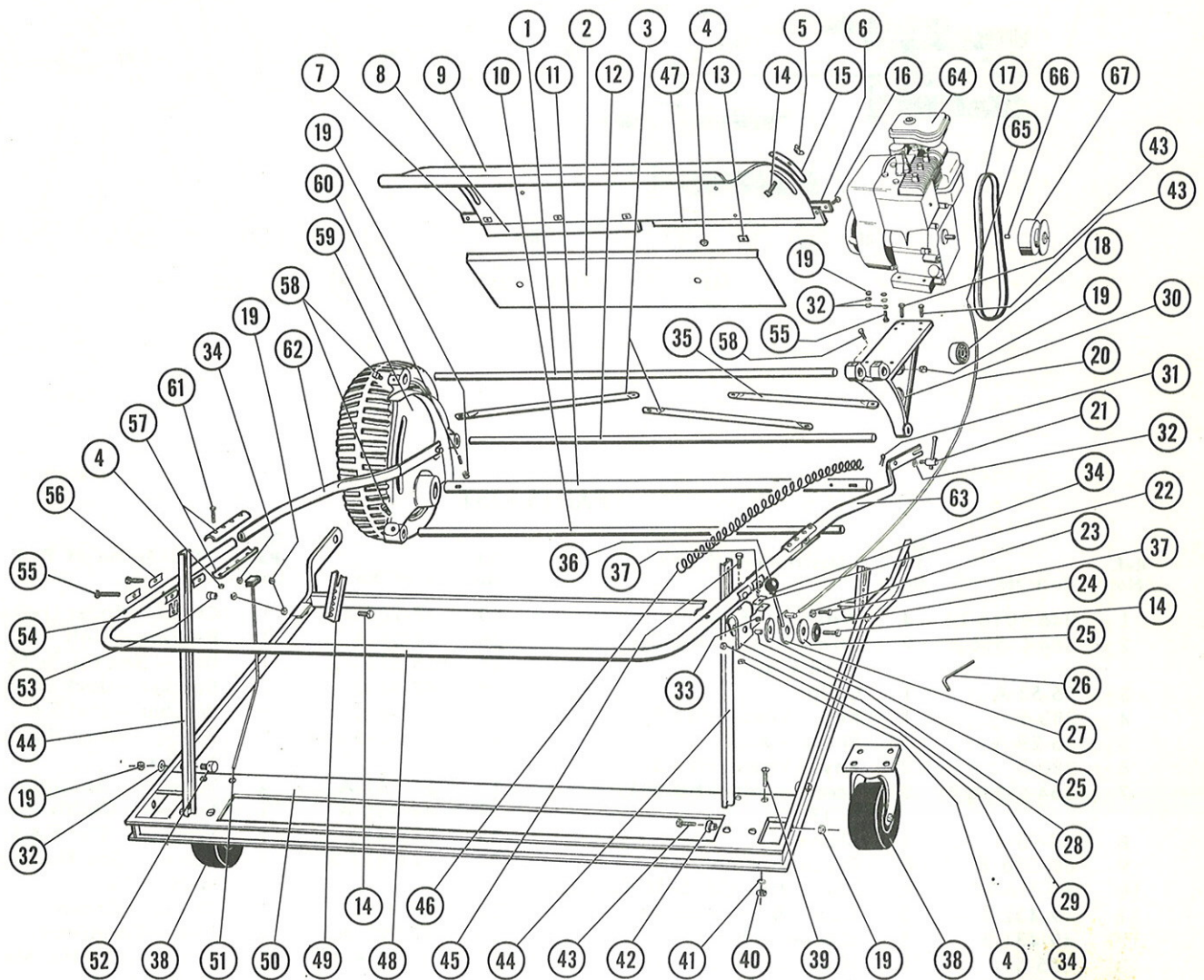
Your unit is right hand (R.H.) or left hand (L.H.) as you stand behind it.

IMPORTANT

SWEeper UNIT ASSEMBLY

PM-16436

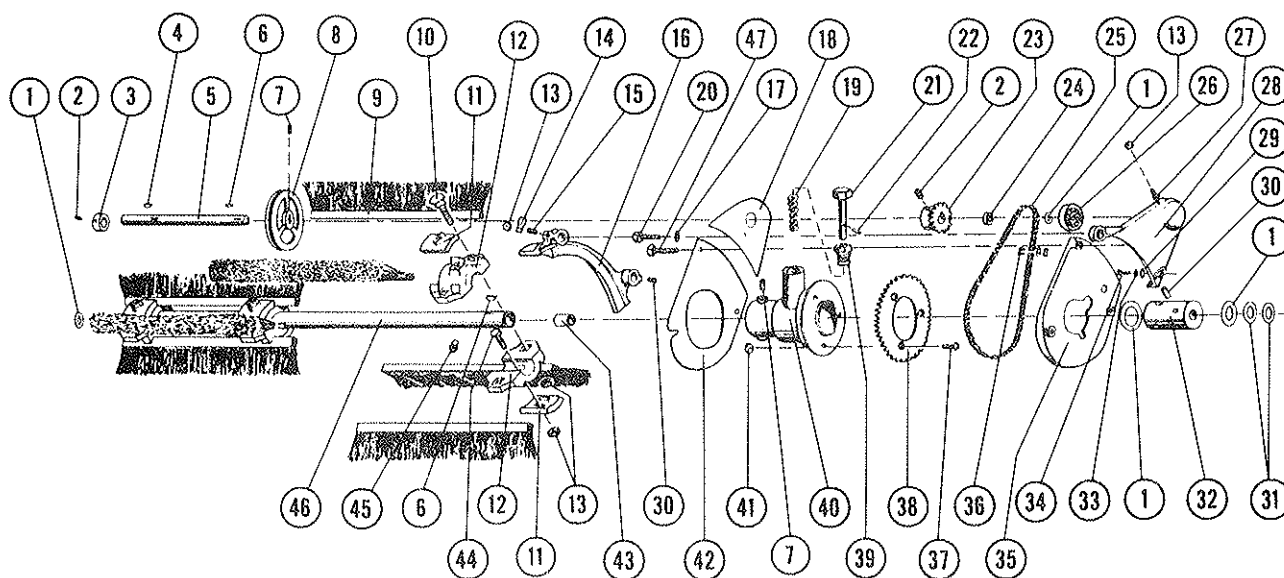
FIGURE 1



BRUSH ASSEMBLY

PM-16436

FIGURE 2

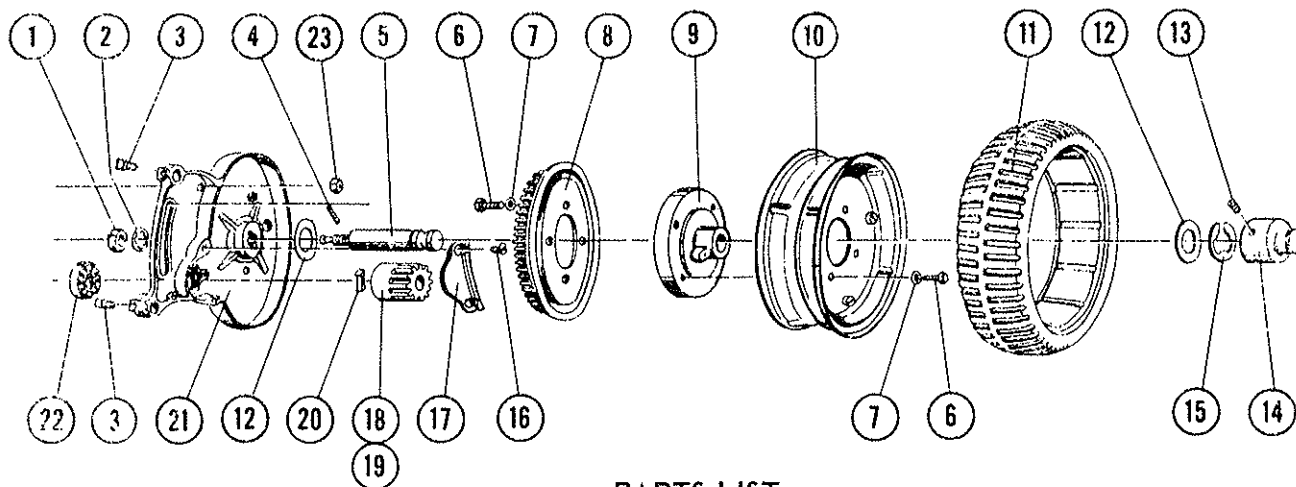


PARTS LIST

Ref. No.	Part No.	Qty. Per Unit	Description of Part	Ref. No.	Part No.	Qty. Per Unit	Description of Part
1	946-1016-16	4	Washer — Fiber	25	47-280-A	1	Chain — Roller (140 Links)
2	564-C-516-4	2	Screw — Allen Hd. Set 5/16-18 x 1/4	26	51-37-A	1	Bearing — Ball
3	56-53-A	1	Collar	27	65-516-12	1	Bolt — Hex Hd. 5/16-18 x 3/4
4	280-9	1	Key — Woodruff #9	28	47-97-C	1	Bracket — Jack Shaft
5	56-29-A	1	Shaft — Jack	29	945-616	1	Washer — Flat S.A.E. 3/8
6	280-5	2	Key — Woodruff #5	30	564-C-516-8	2	Screw — Allen Hd. Set 5/16-18 x 1/2
7	564-C-516-6	3	Screw — Allen Hd. Set 5/16-18 x 3/8	31	55-161-A	4	Washer — Special
8	64-93-A	1	Sheave	32	49-255-A	1	Spacer — Clutch
9	68-286-B	8	Brush Assembly	33	945-416	1	Washer — Flat S.A.E. 1/4
10	65-516-24	8	Bolt — Hex Hd. 5/16-18 x 1 1/2	34	524-416-20	1	Screw — Soc. Hd. Cap 1/4-20 x 1 1/4
11	49-432-B	8	Cap — Brush Bracket	35	47-94-C	1	Guard — Chain
12	49-431-B	8	Bracket — Brush	36	47-282-A	1	Link — Connector
13	365-516	18	Nut — Hex Lock 5/16-18	37	505-416-20	3	Screw — Flat Hd. Machine 1/4-20 x 1 1/4
14	47-229-A	1	Clip — Cable	38	47-88-A	1	Sprocket (40 Tooth)
15	564-C-516-16	1	Screw — Allen Hd. Set 5/16-18 x 1	39	47-85-A	1	Retainer — Clutch Spring
16	49-246-C	1	Side Plate — Inner	40	64-108-A	1	Clutch Housing Assembly
17	936-416	1	Washer — Int. Tooth Lock 1/4	41	335-416	3	Nut — Hex 1/4-20
18	47-101-B	1	Cover — Bracket	42	47-96-B	1	Cover — Chain Guard
19	47-86-A	1	Spring — Clutch	43	49-292-A	2	Bearing — Needle
20	65-416-8	1	Bolt — Hex Hd. 1/4-20 x 1/2	44	65-516-24	8	Bolt — Hex Hd. 5/16-18 x 1 1/2
21	47-98-A	1	Clutch — Drive Pin Assembly	45	286-A-3	2	Alemite Fitting #1792
22	47-89-A	1	Clutch — Spring Pin	46	49-253-B	1	Tube — Reel
23	47-222-A	1	Sprocket (12 Tooth)	47	65-416-32	3	Bolt — Hex Hd. 1/4-20 x 2
24	56-76-A	1	Spacer				

WHEEL ASSEMBLY PM-16436

FIGURE 3

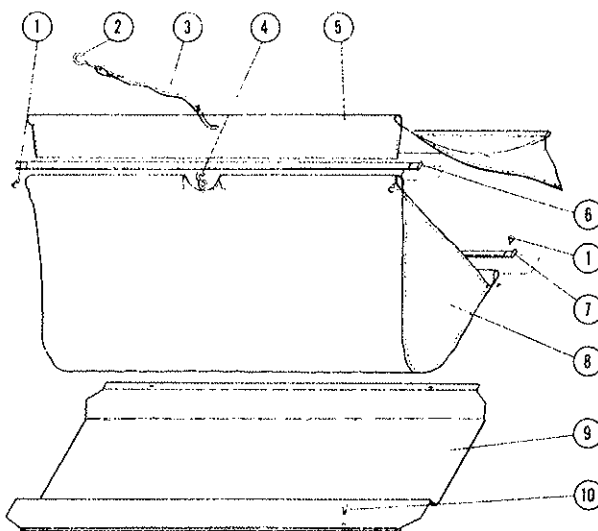


PARTS LIST

Ref. No.	Part No.	Qty. Per Unit	Description of Part	Ref. No.	Part No.	Qty. Per Unit	Description of Part
1	345-816	2	Nut — Hex Jam 1/2-20 N.F.	13	564-C-516-6	2	Screw — Allen Hd. Set 3/16-18 x 3/8
2	936-816	2	Washer — Int. Tooth Lock 1/2	14	47-325-A	2	Extension — Axle
3	560-C-516-10	2	Screw — Sq. Hd. Set 3/16-18 x 3/8	15	997-1416	2	Ring — Retaining 3/8
4	53-29-A	2	Pin — Drive Lock	16	505-416-8	4	Screw — Flat Hd. Machine 1/4-20 x 1/2
5	47-242-A	2	Stud — Axle	17	48-226-A	2	Cover — Pinion
6	65-516-12	16	Bolt — Hex Hd. 3/16-18 x 3/4	18	63-18-RCA	1	Pinion — R.H. (Not Shown)
7	936-516	16	Washer — Int. Tooth Lock 3/16	19	63-19-LCA	1	Pinion — L.H. (Shown)
8	47-243-C	2	Gear — Wheel	20	45-25-A	2	Pawl
9	62-53-B	2	Hub Sub-Assembly	21	56-24-RE	1	Side Plate — R.H.
10	62-47-A	4	Rim — Wheel	22	51-37-A	2	Bearing — Ball
11	62-46-B	2	Tire	23	365-416	3	Nut — Hex Lock 1/4-20
12	946-1416-20	4	Washer — Fiber				

BASKET ASSEMBLY

FIGURE 4



PARTS LIST

No. Ref.	Part No.	Qty. Per Unit	Description of Part	Ref. No.	Part No.	Qty. Per Unit	Description of Part
1	533-14-8	4	Screw — Rd. Hd. Sheet Metal	6	53-53-B	1	Rod — Top Basket
2	54-209-A	1	Hook — Wind Apron	7	53-54-B	1	Rod — Bottom Basket
3	49-295-A-4	1	Elastic Cord	8	56-55-D	1	Canvas — Basket
4	48-282-A	1	Hook	9	49-302-C	1	Bottom — Auxiliary
5	56-60-D	1	Wind Apron Ass'y (WPM-5636)	10	535-10-6	4	Drive Screw (#10 x 3/8)

