



Electronic Service Manuals

This electronic document is provided as a service to our customers. We do not create the contents of the information contained in this document. Should you have detailed questions pertaining to the information contained in this document, you may contact Michco, or the manufacturer which provided the original information in this electronic deliverable. Michco's only part in this electronic deliverable was the electronic assembly process. By providing this manual on line we are not guaranteeing parts availability.

You may contact Michco through the following methods:

Phone (517) 484-9312 or (800) 331-3339

2011 N. High St. -- Lansing, Michigan -- 48906

Fax: (517) 484-9836

Email: CustServe@Michco.com

Web site: www.Michco.Com

Parts Web site: www.FloorMachineParts.Com

Order Parts on Line at:

www.FloorMachineParts.Com

Directly to Parts & Service:

By Email: **Shop@Michco.com**

By Fax: (517) 702-2041

By Voice: Use numbers above.

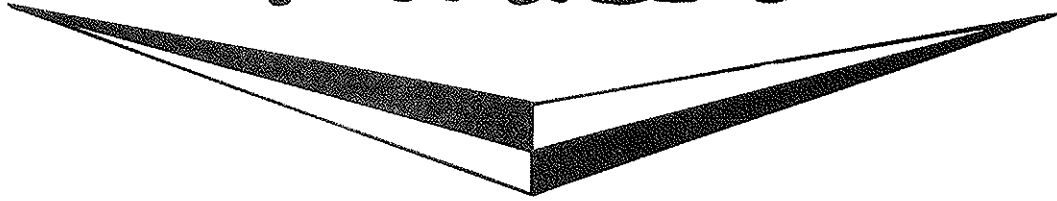
Serving the Cleaning Industry Since 1922

Notice: All copyrighted material remains property of original owners, all trademarks are property of respective owners. Manuals are subject to Manufacturer's reproduction limitations. Originals or reproductions were provided by manufacturers through a request. We make no warranty as to the correctness of information provided in this document and you assume all risk. By placing these manuals on line we are not declaring our corporation to be an manufacturer authorized dealer or provider, please check our web site for authorized manufacturers we represent.

OWNER'S GUIDE



Parker®



PA-8530 PARKERETTE® 30" LAWN SWEEPER



**BE SAFE. PROTECT YOUR FAMILY, YOUR FRIENDS, YOURSELF.
OBSERVE ALL SAFETY INSTRUCTIONS.**

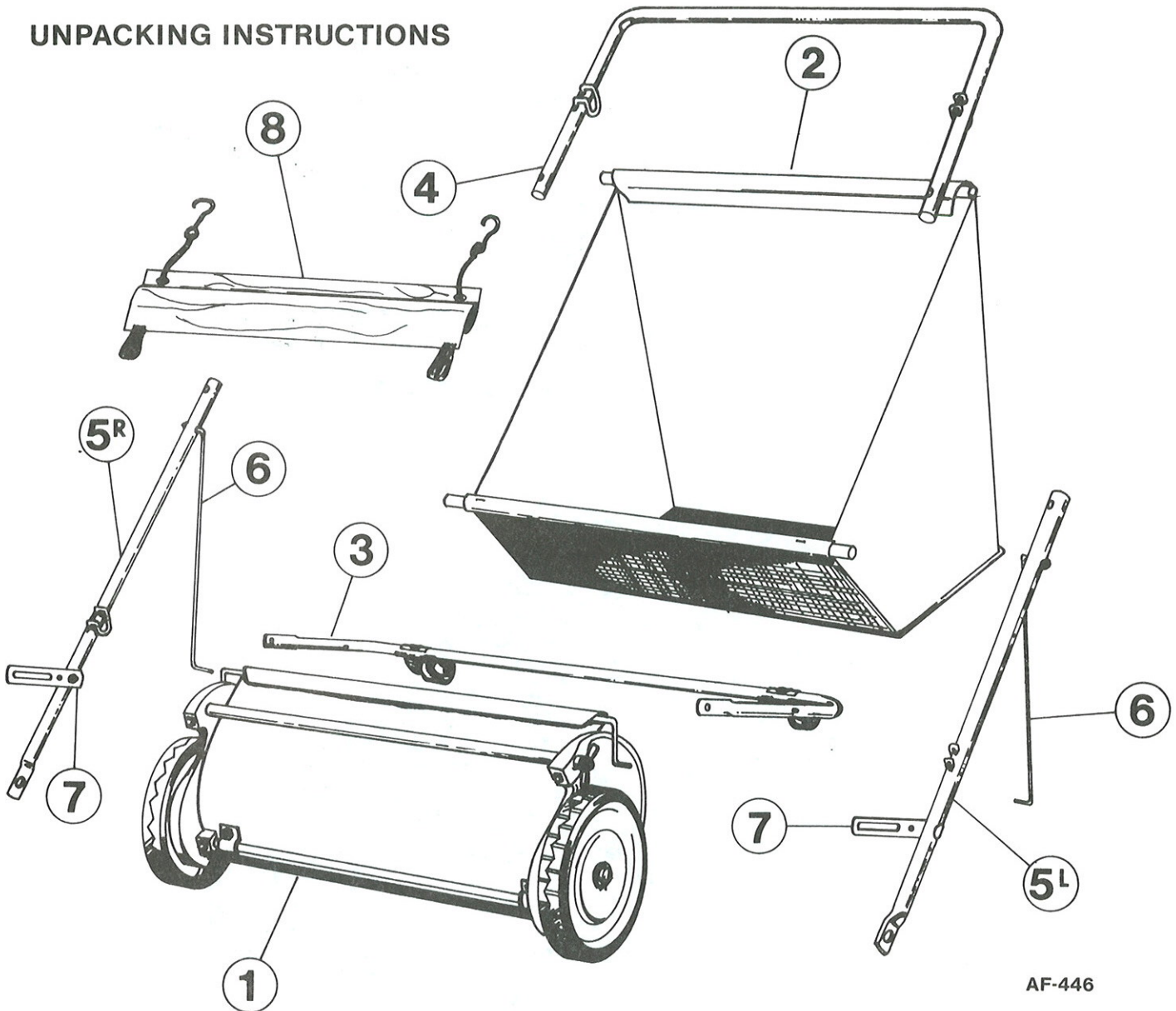
**READ THESE INSTRUCTIONS BEFORE SETTING UP
AND OPERATING MACHINE.**

**NOTE: A TOWING HITCH IS AVAILABLE FOR THE PARKERETTE AS AN ACCESSORY, AND
CAN BE ORDERED UNDER PART NUMBER: MA-577-B POW-R-TOW HITCH.**

PARKER SWEEPER COMPANY Box 1728 Springfield, Ohio 45501-1728

YOUR SAFETY IS OUR CONCERN. READ ALL SAFETY RULES AND OPERATING INSTRUCTIONS BEFORE ATTEMPTING TO OPERATE THIS EQUIPMENT. FAILURE TO FOLLOW SAFETY RULES AND OPERATING INSTRUCTIONS MAY RESULT IN SERIOUS INJURY.

UNPACKING INSTRUCTIONS



AF-446

AFTER UNPACKING THE CARTON, IDENTIFY THE FOLLOWING ITEMS:

1. Sweeper Head Assembly
2. Basket Assembly
3. Handle Support (Caster Assembled)
4. Upper Handle
- 5.R Lower Handle (Right Hand)
- 5.L Lower Handle (Left Hand)
6. Handle Support Spring (2) (Assembled to Lower Handle)
7. Brush Adjusting Bracket (2) (Assembled to Lower Handle)
8. Wind Apron

NOTE: All hardware is preassembled to the unit, either on the handles or on the sweeper head, and will require removal before unit can be assembled. *DO NOT* remove all of the hardware at one time. The step by step Assembly Instructions will have you remove hardware only as it is needed. This helps control loss of parts.

TOOLS REQUIRED FOR ASSEMBLY:

1. 7/16" Wrench
2. 1/2" Wrench (2)

ASSEMBLY INSTRUCTIONS

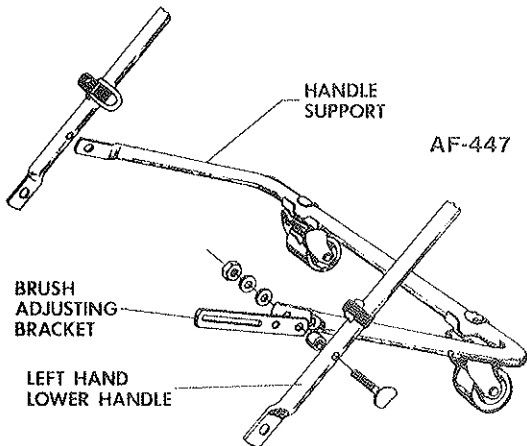
Your Sweeper was packed at the factory in perfect condition. Remove the contents from the carton but do not discard any cardboard parts until you have completely assembled the Sweeper.

IMPORTANT! "Right" and "Left" hand parts are determined from the operator's walking position behind the unit.

Numbers used in assembly instructions refer to the numbers used in the unpacking instructions.

TO ASSEMBLE HANDLE SUPPORT AND LOWER HANDLES:

1. Remove tape holding Lower Handles, items 5R and 5L, to Handle Support, item 3.
2. Determine the "Right" and "Left" hand Lower Handles. To do this:
 - A. Lay the handles out on the floor in front of you with the round end of tubing closest to you.
 - B. Place the tubing so the "U" shaped Basket Support Brackets are turned toward each other, and the rounded edge of the brackets are toward the floor.
 - C. With the Lower Handles in this position, the Handle on the right is the Right hand Lower Handle, and the one on the left is the Left hand Lower Handle.



3. Remove tape that secures Handle Support Spring, item 6, and Brush Adjustment Bracket, item 7, to the Lower Handles, item 5R and 5L.
4. Remove from the left hand Lower Handle, the nut, lockwasher, and flatwasher, leaving the spacer and Brush Adjusting Bracket, item 7, on the bolt thru the handle.

5. Insert the bolt thru the Handle Support, item 3.
6. Add the flatwasher, lockwasher, and nut to bolt and tighten.

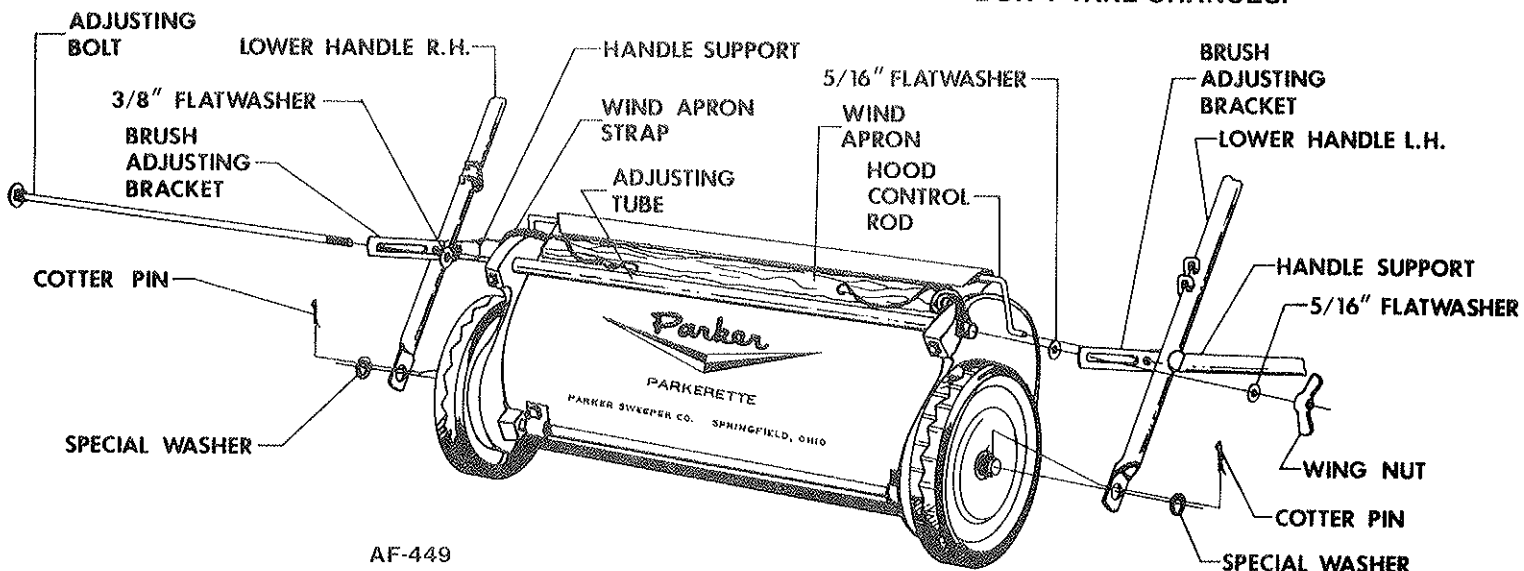
NOTE: Do not overtighten. The contour head bolt could crush the tubing or distort the bolt head.
7. Repeat steps 4 thru 6 for the right side.

TO ASSEMBLE WIND APRON, HANDLE SUPPORT AND LOWER HANDLES TO THE SWEEPER HEAD:

1. Place Hood Control Rods, pre-assembled to hood, thru the small holes in the Brush Adjusting Brackets. As shown below.
2. Remove Wing Nut from Adjusting Bolt, and remove Adjusting Bolt from Sweeper Head.

NOTE: Two 5/16" Flatwashers and one 3/8" flatwasher should also be removed as the adjusting bolt is removed.
3. Lay the Wind Apron on the Hood above the adjusting tube.
4. Place the Wind Apron Strap around the extended end of the Adjusting Tube (both ends).
5. Insert the adjusting Bolt from the right hand side, thru the slot on the right brush Adjusting Bracket, the 3/8" Flatwasher, thru the Adjusting Tube, one 5/16" Flatwasher, thru the slot in the left Brush Adjusting Bracket and thru the second 5/16" Flatwasher.
6. Replace Wing Nut.
7. Remove the cotter pin and flatwasher from the axle on both sides of the Sweeper Head.
8. Place Lower Handles on axles and replace flatwasher and cotter pins.
9. Spread the cotter pins to secure.

**OBSERVE SAFETY RULES AT ALL TIMES.
DON'T TAKE CHANCES!**



ASSEMBLY INSTRUCTIONS (Continued)

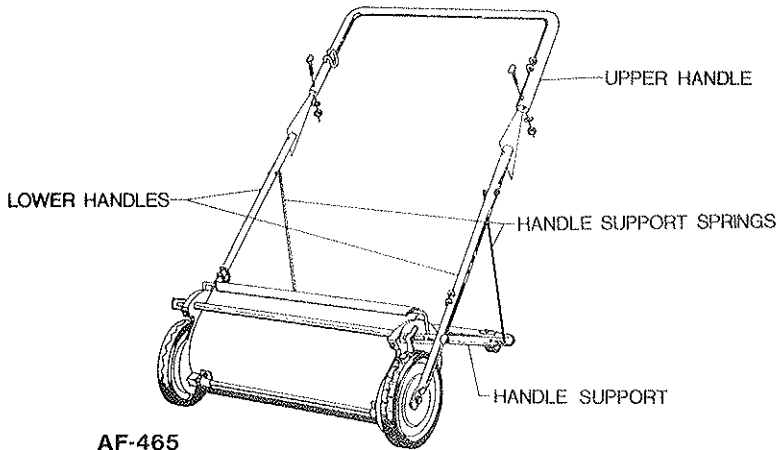
TO ASSEMBLE UPPER HANDLE TO THE UNIT:

1. Remove the nut, lockwasher, and contour hd. bolt from the top of each Lower Handle.

NOTE: The plastic tube covers that are over the contour hd. bolts are used only to prevent the nuts from backing off of the bolts while the unit is being transported. It is not necessary to keep them.
2. Slide the Upper Handle down, over the Lower Handles until the holes align.

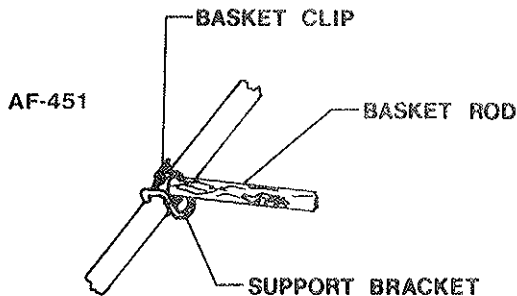
NOTE: The open end of the "U" shaped basket support brackets must be up.

NOTE: The Upper Handle telescopes over the Lower Handles.
3. Reassemble the contour hd. bolts, lockwashers, and nuts, removed in step 1, with the head of the contour hd. bolts on the top of the handles.
4. Lift the Handle and allow the Handle Support Springs, assembled to the Lower Handles, to swing down.
5. Insert free end of Support Springs into the holes in the Handle Support.

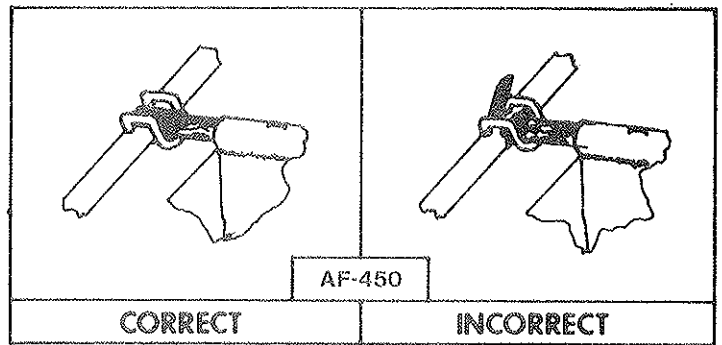


TO INSTALL BASKET:

1. Turn the basket clips so that the long straight side of the clips are upward on the handles.
2. Place the top wooden basket rod in the support brackets. In this position the rod should be resting on the curled side of the basket clips.



3. Push the wooden rod down, turning the clips at the same time. When rod is secured properly, it should rest on the bottom of the support brackets with the curled side of clips on the flat end of rod, and the straight side of clips flat against the top of the rod.



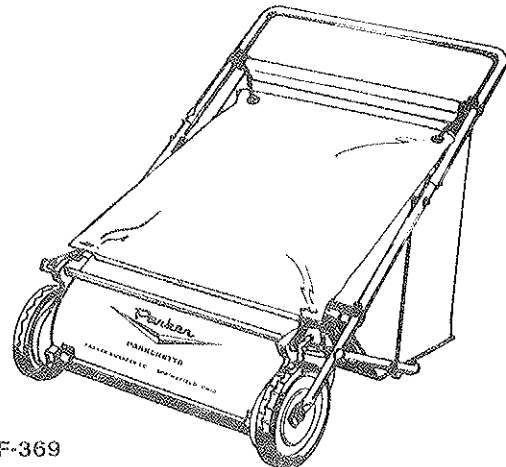
4. Repeat steps 2 and 3 for the bottom basket rod.

NOTE: The basket clips are provided to secure the basket when sweeping on rough terrain.

TO USE WIND APRON:

NOTE: The Wind Apron is designed to keep leaves, grass clippings, or other debris from blowing out of the basket in windy conditions or when the sweeper is towed.

1. When not in use, the Wind Apron may be stored on top of the hood, tucked lightly under the Adjusting Tube.
2. To use the Wind Apron, attach the hooks over the top basket rod next to the Basket Support Brackets.
3. To adjust tightness of Wind Apron, move knots in the elastic cord up or down.



OPTIONAL: Trailing Hitch available for towing.

CAUTION: When towing this unit caution must be exercised on rough or uneven terrain to travel slowly to prevent possible upsetting of the sweeper (tipping forward). Caution must also be taken when moving over gravel driveways, rutted turf, curb areas, bits of broken tree limbs, twigs, mole runs, or other interferences. Traveling too fast over these areas while towing may cause the sweeper wheels to be blocked causing the sweeper to upset.

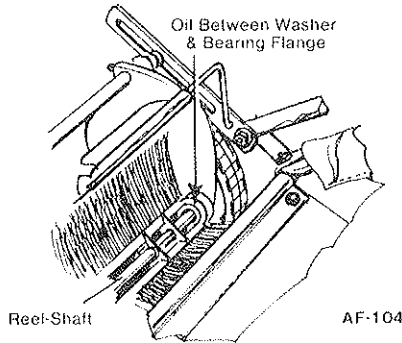
OPERATION AND MAINTENANCE INSTRUCTIONS

Your Sweeper is designed and constructed with heavy duty precision parts, to stand up under the most rugged conditions. To maintain the efficiency of the Sweeper, please follow these instructions:

1. Lubrication

- A. Place a few drops of oil in the oil hole located on the hub of each wheel and between the Washer and Bearing Flange on the Reel Shaft inside the Side Plate (Both Sides). This should be done each time before the Sweeper is used.
- B. Before using the Sweeper the first time each season, remove both wheels and apply a good grade of grease on the Pinion Gear and the Gear of the Wheel.

NOTE: Do not put grease on the inside of the Pinion. Grease here, will keep the pawls from operating correctly, resulting in loss of Brush Rotation.

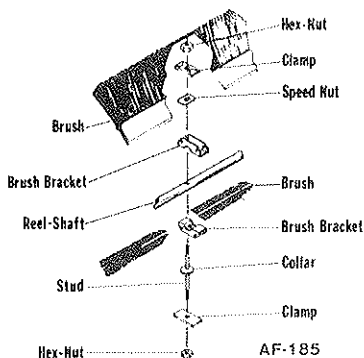


2. Basket Dumping

- A. By swinging the unit handle forward over the front, the debris will dump out into a pile on the ground. Some shaking of the basket bottom may be required to dislodge all of the debris. When swinging the handle back over the sweeping head, some debris will drop into the sweeping head.
- B. By grasping the upper basket dowel rod with one hand and the lower dowel with the other hand, the basket may be lifted out of the sweeper to dump. Replace the basket by following the instructions "To Install Basket", under Assembly Instruction.
- C. The basket should be emptied after each use.

3. Brush Removal

- A. Turn the sweeper upside down on a workbench or on the ground.
- B. Notice the brush stud has a collar fitting against one of the brush brackets holding it against the reel shaft.
- C. Remove the hex nuts and brush clamps from the end of all four studs, on the sides with the collar.
- D. Remove the four brushes from the brush brackets.
- E. Remove the hex nuts and brush clamps from the opposite end of the studs, but **DO NOT** remove the speed nut, (this would allow the stud to fall out of reel shaft releasing the brush brackets).



4. To Replace Brushes

- A. Turn the reel shaft to position the brush strips in the slots of the brush brackets that are held on the stud by the speed nut.
- B. Position the brush clamps and finger tighten hex nuts. Be sure brushes are all the way down in all the brush brackets.
- C. Brushes will be staggered with a slight overlap. Tighten lock nuts to assure brushes will be held firmly in place.
- D. Turn the reel shaft so the installed brush strips are on the bottom.
- E. Repeat the sequence of installation for the remaining four brushes.
- F. Tighten all nuts, Torque to 50 to 55 inch pounds.

5. Pinions

The pinions should not be removed from the reel shaft unless the pinions or rollers are suspected of being broken or having excessive wear. If removal is necessary:

- A. Remove cotter pin, wheel and washers from the axle.
- B. Slide pinions off shaft slowly, being sure not to lose pawls and pawl springs which will become displaced or fall out when pinion is removed from shaft.
- C. To reinstall pinions refer to next page in this manual on "HOW TO REINSTALL PINIONS".

6. Brush Height Adjustment

- A. Correct brush setting will have the brushes touching the top of the grass. To clean sidewalks or driveways, lower the brushes until just touching surface of pavement.

CAUTION: IF SWEEPER PUSHES HARD, THE BRUSHES ARE SET TOO LOW.

- B. To raise or lower brushes, loosen large wing nut on the left hand side of unit, on the adjusting bolt.
- C. To raise brushes pull the top of the sweeping unit forward until desired height is obtained.
- D. To lower brushes let sweeping unit slide backward until desired height is obtained.
- E. When proper brush height is obtained, secure wing nut.

CAUTION! This sweeper is not designed to haul people, animals or equipment. Severe damage to the sweeper and possible injury to people or animals may result if this warning is ignored.

OPERATING SPEED

Moving the Sweeper forward rotates the brushes, propelling the leaves, clippings, etc., into the basket.

Select a forward travel speed that provides efficient sweeping without throwing debris over the back of the basket.

HOOD ADJUSTMENTS

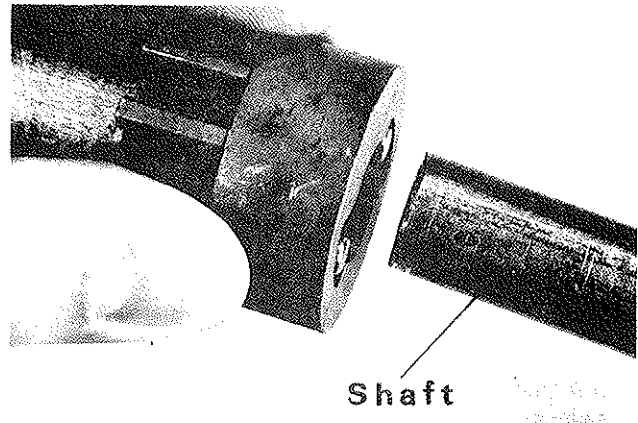
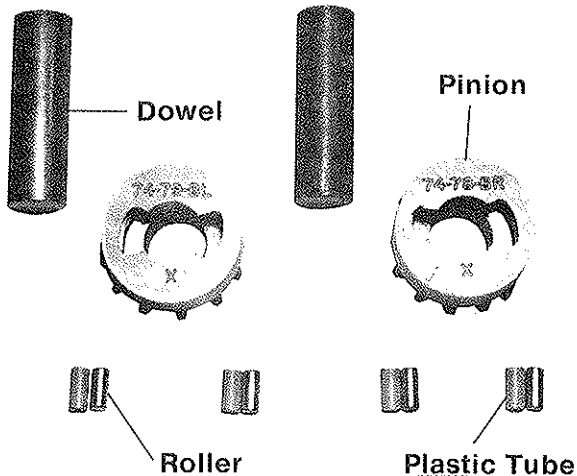
- A. The hood can be adjusted to change the deflection of the material being handled, by loosening the wing nuts in the lower corners of the hood and sliding the hood up or down. If sweeping at a high rate of speed the hood should be raised to deflect the material to the back of the basket. If set too low the material could be thrown over the back of basket. If sweeping at a low speed the hood should be set lower until material goes to the back of the basket.

HOW TO RE-INSTALL PINIONS IN MANUAL OR TRAILING SWEEPERS

If for some reason you have found it necessary to remove the pinions, you should carefully follow these instructions. All parts must be clean before assembling.

(1) To assist you, we suggest using a piece of wood doweling or plastic material $\frac{5}{8}$ " diameter, 2" long as shown. Each pinion is different as indicated by the part number and must be returned to the correct side of the shaft.

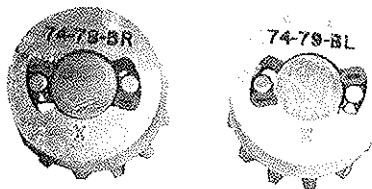
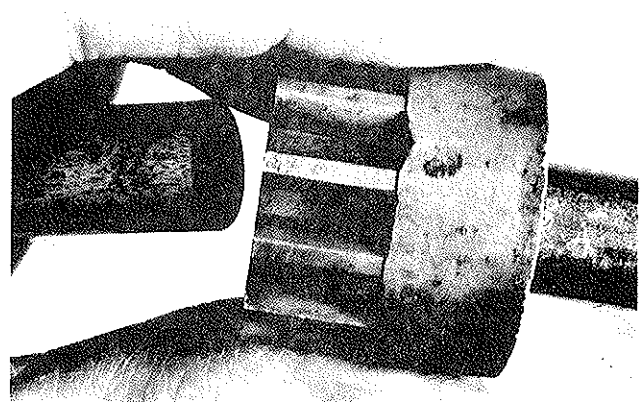
(4) Pinion with part number **74-79 BL** is to be replaced on the **left side** of the shaft. Part number **74-78 BR** is for the **right side**. Line up the pinion (leaving the dowel in place) with the shaft as shown.



(2) Insert the wooden dowel into the pinion.

(5) Push the pinion onto the shaft which will force the dowel to back out of the pinion. This will leave the rollers and plastic tubes in their proper position.

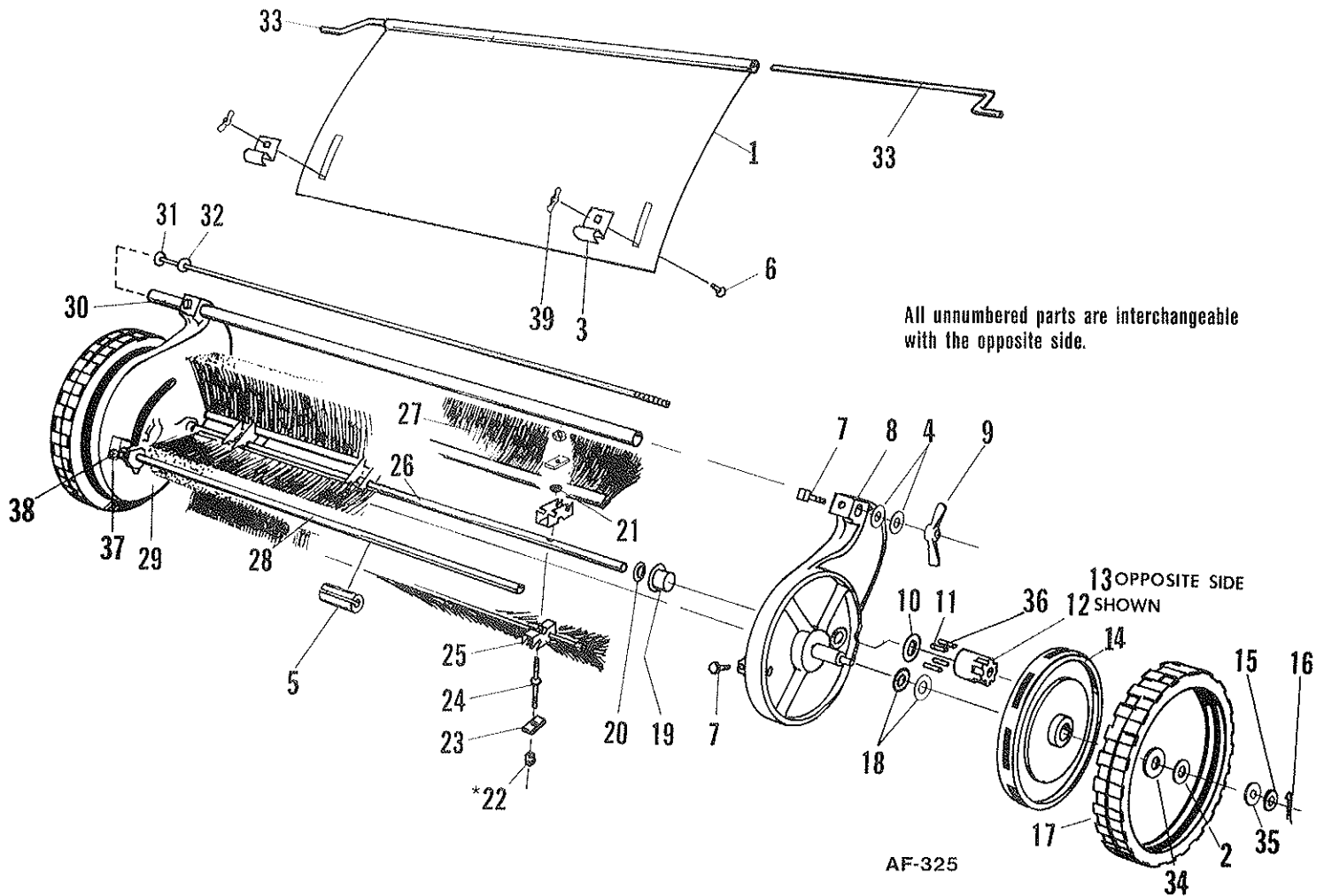
(3) Identify your pinion part number and insert the metal rollers. Place the plastic tubing in the cavity between the metal roller and the wall of the cavity. You may have to force the plastic tubing into this space but it is resilient and is supposed to fit tightly.



(6) Apply a coating of grease on the outside of the wheel gear teeth. Do not grease inside pinion as this will cause pawl springs to be ineffective.

NOTE! The right and left side are determined from the operators position.

SWEEPER UNIT ASSEMBLY



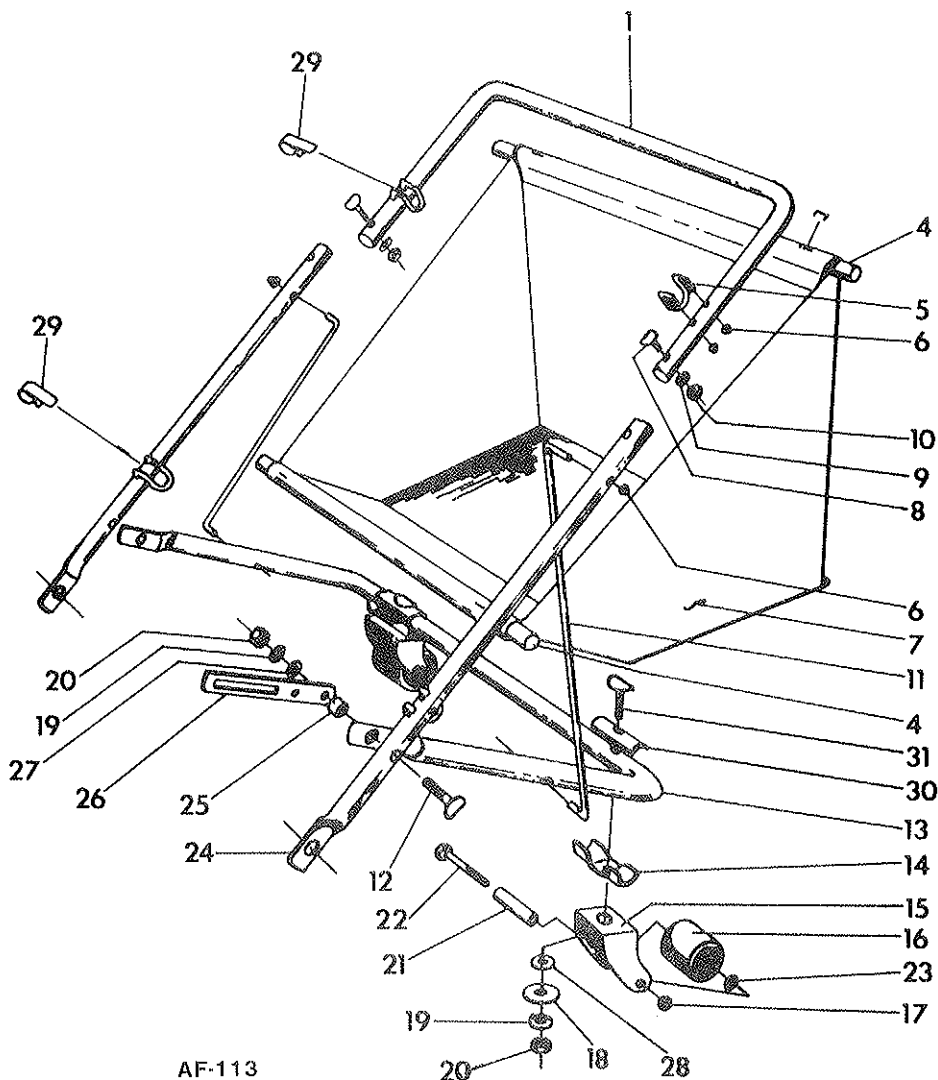
PARTS LIST

Ref. No.	Part No.	Qty. Per Unit	Description	Ref. No.	Part No.	Qty. Per Unit	Description
1	84-316-D	1	Hood	*22	362-416	8	Hexagon Lock Nut Serrated Flange 1/4-20
2	71-37-A	2	Special Washer	23	69-04-A	8	Brush Clamp
3	60-22-B	2	Hood Clamp	24	74-16-A	4	Brush Stud
4	945-516	2	Flatwasher, Plain 5/16	25	74-13-C	8	Brush Bracket
5	79-50-A	1	Hood Spacer	26	77-137-B	1	Reel Shaft
6	70-416-8	2	Carriage Bolt 1/4-20x1/2	27	1200-14.5-B	8	Brush Strip
7	560-C-516-10	4	Set Screw 5/16-18x5/8	28	62-04-A	1	Bottom Tie Rod
8	71-05-LD	1	Left Hand Side Plate	29	71-04-RD	1	Right Hand Side Plate
9	73-71-A	1	Wing Nut 5/16	30	78-131-A	1	Adjusting Tube
10	50-33-A	2	Special Washer	31	78-133-A	1	Adjusting Bolt
11	74-80-A *	4	Pawl	32	945-616	1	Plain Washer 3/8
12	74-79-LB *	1	Left Hand Pinion	33	84-244-A	2	Hood Control Rod
13	74-78-RB *	1	Right Hand Pinion	34	946-816-16	2	Fiber Washer
14	49-377-C	2	Wheel	35	77-81-A	2	Spacer - Axle
15	46-81-A	2	Special Washer	36	76-37-A *	4	Pawl Spring
16	380-764-16	2	Cotter Pin	37	84-305-B	2	Hitch Bracket
17	63-224-B	2	Tire	38	61-416-10	2	Bolt, Hex Hd. (Cutting Thd.) 1/4-20x5/8
18	946-1216-24	4	Fiber Washer	39	351-416-18	2	Wing Nut 1/4-20
19	68-60-A	2	Ball Bearing				
20	55-161-A	2	Special Washer				
21	75-89-A	4	Retainer				

*Torque to 50 to 55 inch pounds.

* SA-1580-B PINION KIT Plate No. 957 (Rev. 11-18-86)

BASKET AND HANDLE ASSEMBLY



PARTS LIST

Ref. No.	Part No.	Qty. Per Unit	Description	Ref. No.	Part No.	Qty. Per Unit	Description
1	84-278-C	1	Upper Handle	17	364-416	2	Nut Hex Lock Thin 1/4-20
*4	77-51-A	2	Basket Rod	18	50-230-A	2	Special Washer 5/16
5	80-110-A	4	Basket Support Bracket	19	935-516	4	Spring Lock Washer 5/16
6	77-10-A	10	Push Nut	20	335-516	4	Nut Hex 5/16-18
7	SA-1329-C	1	Basket	21	78-65-A	2	Bushing
8	69-416-20	2	Bolt Large Contour Head 1/4-20x1 1/4	22	65-416-44	2	Bolt Hex Head 1/4-20x2 3/4
9	935-416	2	Spring Lockwasher 1/4"	23	945-616	4	Flat Washer, Plain 3/8
10	335-416	2	Hexagon Nut 1/4-20	24	84-11-C	2	Lower Handle
11	77-30-A	2	Handle Support Spring	25	54-227-A	2	Spacer
12	69-516-24	2	Bolt Contour Hd. 5/16-18x1 1/2	26	60-21-A	2	Brush Adjusting Bracket
13	84-281-C	1	Handle Support	27	945-516	2	Flat Washer 5/16
14	79-174-A	2	Pivot Block	28	74-126-A	2	Spacer
15	78-55-B	2	Caster Fork	29	78-123-A	4	Clip
16	78-56-A	2	Roller	30	59-77-A	2	Clamp
				31	69-516-28	2	Bolt, Contour Hd. 5/16-18x1 3/4
				32	SA-892-A	1	Wind Apron (not shown)

*Supplied with item 7, SA-1329-C Basket, but can be purchased separately.