



Electronic Service Manuals

This electronic document is provided as a service to our customers. We do not create the contents of the information contained in this document. Should you have detailed questions pertaining to the information contained in this document, you may contact Michco, or the manufacturer which provided the original information in this electronic deliverable. Michco's only part in this electronic deliverable was the electronic assembly process. By providing this manual on line we are not guaranteeing parts availability.

You may contact Michco through the following methods:

Phone (517) 484-9312 or (800) 331-3339

2011 N. High St. -- Lansing, Michigan -- 48906

Fax: (517) 484-9836

Email: CustServe@Michco.com

Web site: www.Michco.Com

Parts Web site: www.FloorMachineParts.Com

Order Parts on Line at:

www.FloorMachineParts.Com

Directly to Parts & Service:

By Email: **Shop@Michco.com**

By Fax: (517) 702-2041

By Voice: Use numbers above.

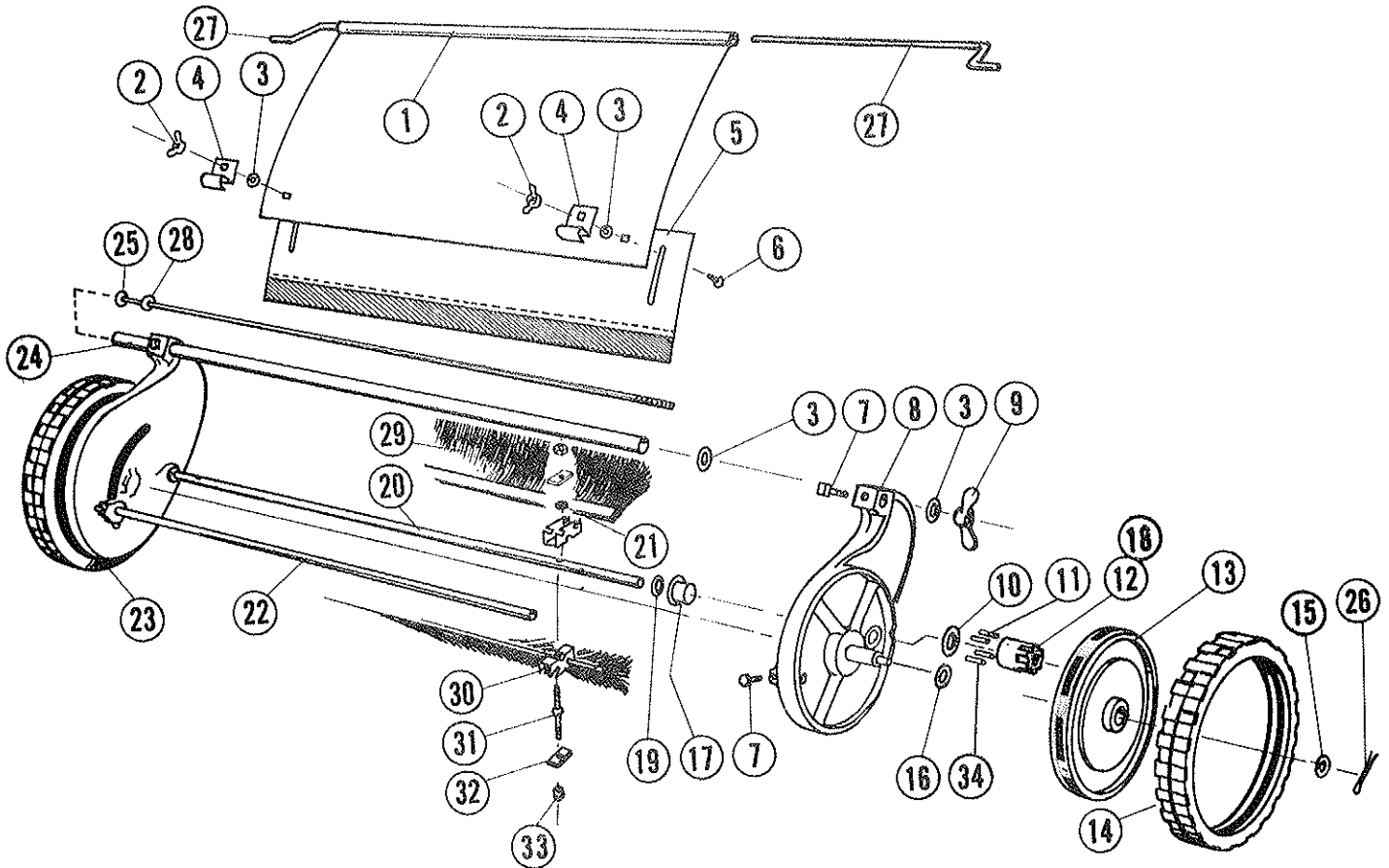
Serving the Cleaning Industry Since 1922

Notice: All copyrighted material remains property of original owners, all trademarks are property of respective owners. Manuals are subject to Manufacturer's reproduction limitations. Originals or reproductions were provided by manufacturers through a request. We make no warranty as to the correctness of information provided in this document and you assume all risk. By placing these manuals on line we are not declaring our corporation to be an manufacturer authorized dealer or provider, please check our web site for authorized manufacturers we represent.

PA-7730 PARKERETTE

SWEEPER UNIT ASSEMBLY

SECTION 2



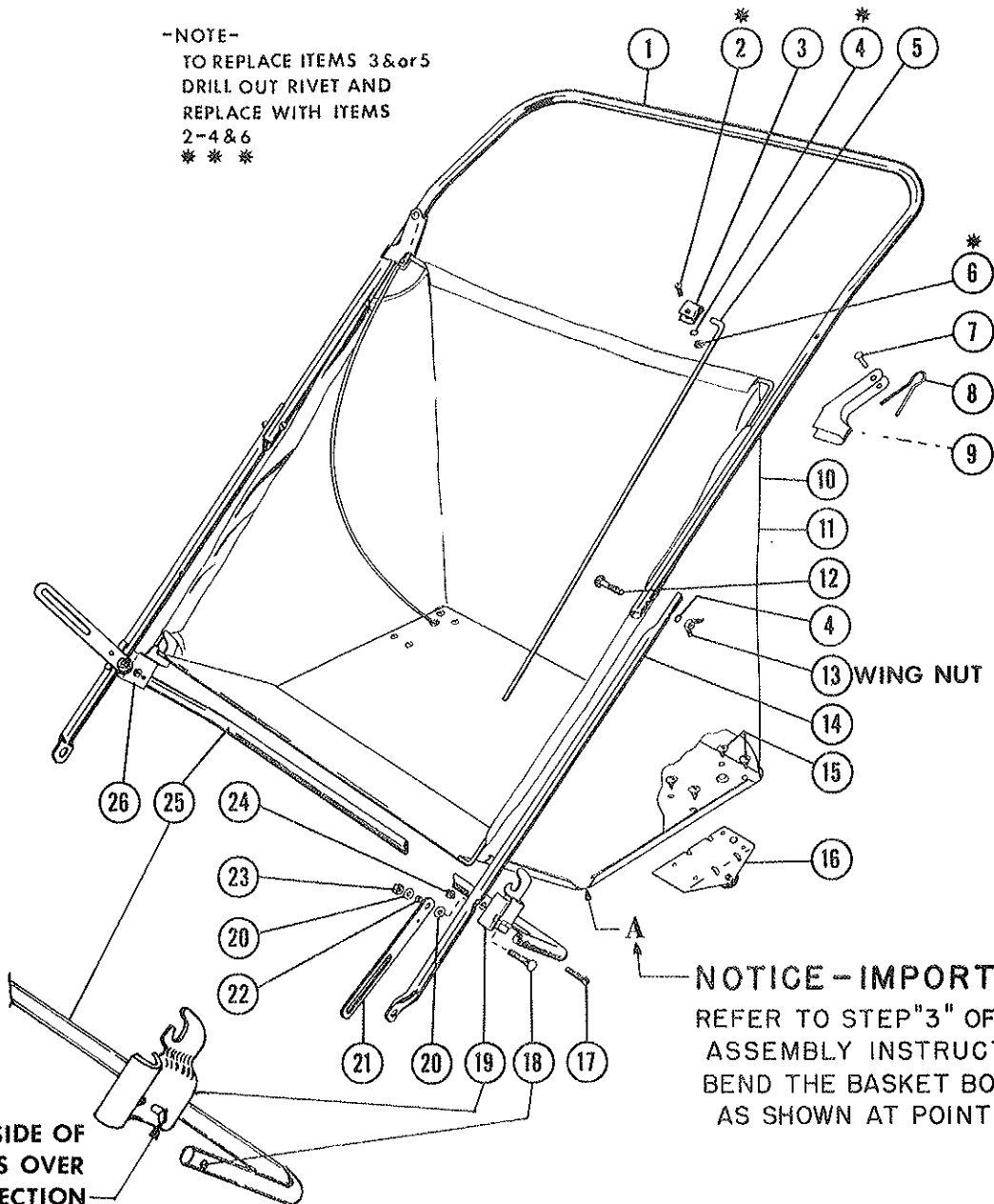
PARTS LIST

Ref. No.	Part No.	Qty. Per Unit	Description of Part	Ref. No.	Part No.	Qty. Per Unit	Description of Part
1	75-158-C	1	Hood Assembly	18	74-78-RB	1	Pinion RH (Not Shown)
2	351-416-18	2	Nut-Wing 1/4-20 x 1 1/8 Span	19	55-161-A	2	Washer-Special
3	945-516	8	Washer-Flat 5/16	20	75-148-B	1	Reel Shaft
4	60-22-B	2	Clamp-Head	21	75-89-A	4	Retainer
5	68-10-C	1	Hood Extension	22	62-04-A	1	Tie Rod
6	70-416-12	2	Bolt-Carriage 1/4-20 x 3/4	23	68-3-RD	1	Side Plate
7	560-C-516-10	4	Screw-Sq. Hd. Set 5/16-18 x 5/8	24	68-05-A	1	Tube Adjusting
8	68-4-LD	1	Side Plate	25	69-75-A	1	Bolt-Special
9	73-71-A	1	Nut-Wing	26	380-432-12	2	Cotter Pins 1/8 dia. x 1
10	50-33-A	2	Washer-Special	27	68-14-A	2	Rod-Hood Control
11	74-80-A	4	Roller Pawl	28	945-616	1	Washer-Flat 3/8 I.D.
12	74-79-LB	1	Pinion LH	29	1200-14-5	8	Brush Strip Assembly
13	49-377-C	2	Wheel	30	74-13-C	8	Brush Bracket
14	63-224-B	2	Tire	31	74-16-A	4	Stud
15	46-81-A	4	Washer	32	69-04-A	8	Clamps-Brush Strip
16	946-1216-24	2	Washer-Fiber	33	362-416	8	Nut Hex Lock 1/4-20
17	68-60-A	2	Bearing (Kendal BK-1377-628)	34	76-37-A	4	Pawl Spring

BASKET AND HANDLE ASSEMBLY

Ref. No.	Part No.	Qty. Per Unit	Description of Part	Ref. No.	Part No.	Qty. Per Unit	Description of Part
1	68-20-C	1	Handle-Upper	13	351-416-18	2	Nut-Wing $\frac{1}{4}$ -20
* 2	515-416-10	2	Screw-Round Head $\frac{1}{4}$ -20 x $\frac{5}{8}$	14	55-56-B	2	Handle-Lower
3	53-116-A	2	Clamp-Basket Spring	15	519-8-6	8	Screw-Sheet Metal #8 x $\frac{3}{8}$
* 4	936-416	2	Washer-Int. Tooth Lock $\frac{1}{4}$	16	52-34-B	2	Roller-Assembly
5	53-114-B	2	Spring-Basket	17	65-416-20	2	Bolt-Hex Head $\frac{1}{4}$ -20 x $1\frac{1}{4}$
* 6	335-416	2	Nut-Hex $\frac{1}{4}$ -20	18	70-516-24	2	Bolt-Carriage $\frac{5}{16}$ -18 x $1\frac{1}{2}$
7	58-140-A	2	Rivet	19	53-169-LD	1	Bracket-Left Hand
8	58-27-A	2	Spring	20	945-516	4	Washer-SAE Flat $\frac{5}{16}$
9	58-26-B	2	Bracket-Basket Lock	21	60-21-A	2	Bracket-Brush Adjusting
10	SA-138-C	1	Basket-With Rollers & Springs Replacement	22	54-227-A	2	Spacer
11	68-15-C	1	Basket-Without Rollers & Spring Replacement	23	335-516	2	Nut-Hex $\frac{5}{16}$ -18
12	70-416-24	2	Bolt-Carriage $\frac{1}{4}$ -20 x $1\frac{1}{2}$	24	364-416	2	Nut-Hex. $\frac{1}{4}$ -20
				25	68-21-B	1	Support-Handle
				26	53-168-RD	1	Bracket-Right Hand

-NOTE-
TO REPLACE ITEMS 3&or5
DRILL OUT RIVET AND
REPLACE WITH ITEMS
2-4&6
* * *



NOTICE - IMPORTANT
REFER TO STEP "3" OF THE
ASSEMBLY INSTRUCTIONS.
BEND THE BASKET BOTTOM
AS SHOWN AT POINT "A"

HOLE ON INSIDE OF
"U" SUPPORT FITS OVER
PROJECTION

REPLACEMENT BASKET FOR PA-6830 - PA-7730

68-15-C Replacment Basket is to be used with customers old metal bottom basket.

First remove old canvass from the frame. Also, remove the rollers from the metal bottom. Place the new plastic bottom on top of the metal and drill or punch holes to allow reinstallation of rollers on the metal bottom. This will secure the metal and plastic bottoms.

Use the ties to secure the sides and back of the basket to the upper frame. It is not necessary but you can drill corresponding holes through the front lip of the metal and plastic bottom and secure with pop rivets or small screws and bolts.

