



Electronic Service Manuals

This electronic document is provided as a service to our customers. We do not create the contents of the information contained in this document. Should you have detailed questions pertaining to the information contained in this document, you may contact Michco, or the manufacturer which provided the original information in this electronic deliverable. Michco's only part in this electronic deliverable was the electronic assembly process. By providing this manual on line we are not guaranteeing parts availability.

You may contact Michco through the following methods:

Phone (517) 484-9312 or (800) 331-3339

2011 N. High St. -- Lansing, Michigan -- 48906

Fax: (517) 484-9836

Email: CustServe@Michco.com

Web site: www.Michco.Com

Parts Web site: www.FloorMachineParts.Com

Order Parts on Line at:

www.FloorMachineParts.Com

Directly to Parts & Service:

By Email: **Shop@Michco.com**

By Fax: (517) 702-2041

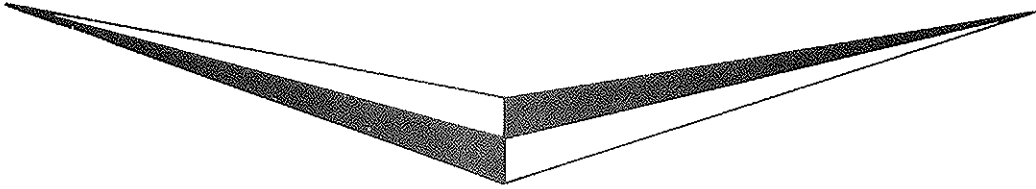
By Voice: Use numbers above.

Serving the Cleaning Industry Since 1922

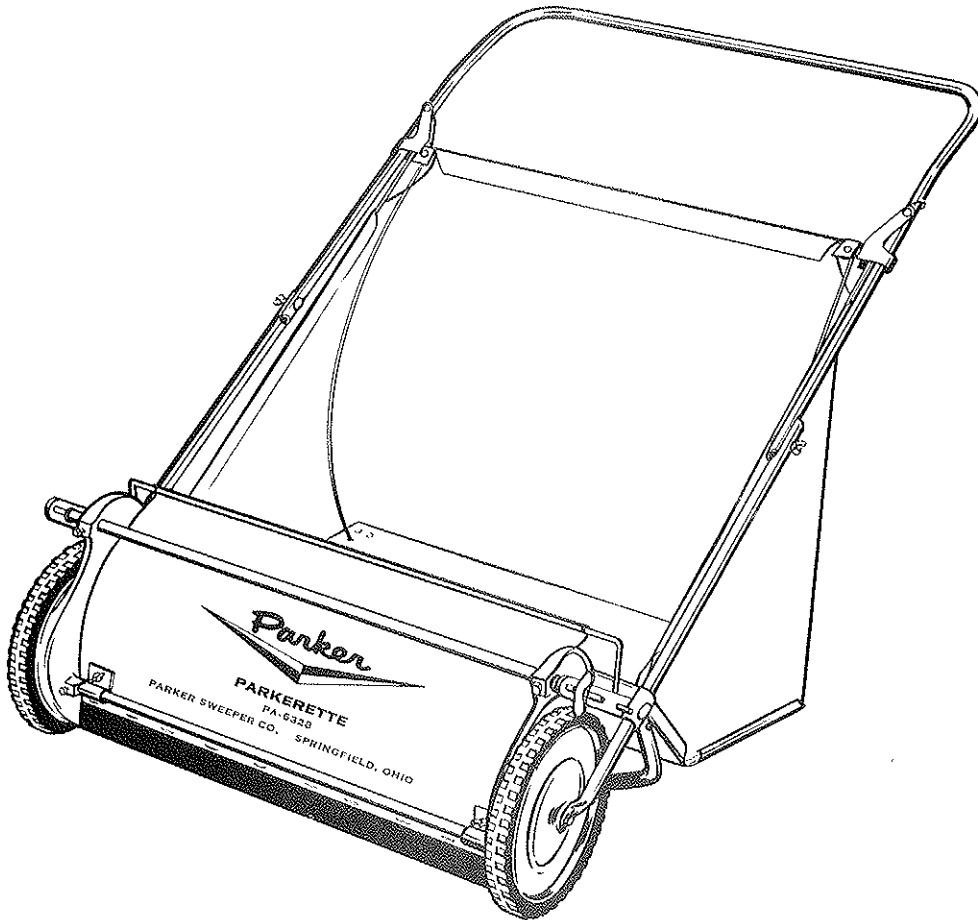
Notice: All copyrighted material remains property of original owners, all trademarks are property of respective owners. Manuals are subject to Manufacturer's reproduction limitations. Originals or reproductions were provided by manufacturers through a request. We make no warranty as to the correctness of information provided in this document and you assume all risk. By placing these manuals on line we are not declaring our corporation to be an manufacturer authorized dealer or provider, please check our web site for authorized manufacturers we represent.

OPERATING INSTRUCTIONS AND PARTS LIST
FOR

Parker



PA-6320 PARKERETTE
20" LAWN SWEEPER



NOTICE: These instructions were written to assist you in assembling your Lawn Sweeper quickly and correctly. Read instructions thoroughly before attempting assembly so that you are familiar with the complete procedure.

PARKER SWEEPER COMPANY

BOX 1728

SPRINGFIELD, OHIO 45501-1728

ASSEMBLY INSTRUCTIONS

1. Remove wing nut, Ref. No. 13, lock washer, Ref. No. 4, and carriage bolt, Ref. No. 12, Fig. 2, from one side of handle and reverse their position so that the wing nut is on the outside of the handle, instead of the inside. Repeat on other side of handle. Unfold the handle and tighten the wing nuts so that the handle is straight and rigid.

2. Loosen the nuts, Ref. No. 24, Fig. 2, on both sides of the U-shaped support, Ref. No. 25. Pivot the support until the projections on lower basket brackets, Ref. Nos. 19 & 26, Fig. 2, fit into the holes provided on both sides of the U-support. Tighten the nuts to hold the U-support firmly in this position.

3. Bend the metal basket bottom, Ref. No. 10, Fig. 2, along the scored line until it remains bent of its own

accord at an angle of about 45 degrees. See point "A" in exploded view.

4. Gently force a bow into the basket support springs, Ref. No. 5, Fig. 2, and place the lower free ends into the holes provided at the rear of the metal basket bottom.

5. Place the lower front of the basket into the hooked slots of the lower basket supports, Ref. Nos. 19 & 26, Fig. 2, and the upper rear of the basket into the catches, Ref. No. 9, on the upper handle.

NOTE: Press down on the handle a few times, till the wheels leave the floor. This will set the basket support springs to correct tension.

6. Make sure that all nuts, bolts, and hardware are tight.

OPERATING INSTRUCTIONS

THE ADJUSTMENT OF THIS SWEEPER IS VERY IMPORTANT FOR EASE OF OPERATION.

Adjusting Brush Height. Loosen large wing nut, Ref. No. 11, Fig. 1. To raise brushes to extreme height, pull sweeping unit forward as far as slots in brush adjustment brackets, Ref. No. 21, Fig. 2, will permit. To lower brushes to lowest position, push sweeping unit backward as far as slots will permit. Secure wing nut when desired brush adjustment is obtained.

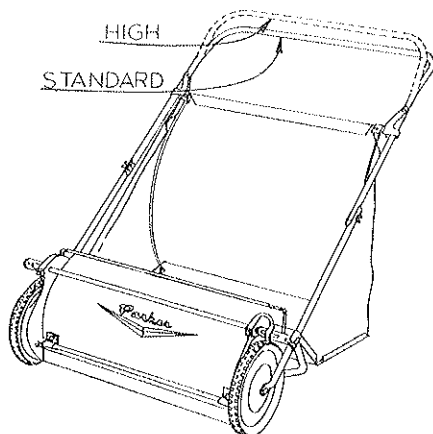
1. For grass clippings or leaves, adjust hood extension, Ref. No. 6, Fig. 1, and brushes to highest positions. After trial run on lawn, should the settings be too high, lower slightly and try again until correct setting is found. Brush life may be prolonged by adjusting so contact with ground is light.

2. For patio, sidewalk, and driveway sweeping, adjust hood extension to bottom position. Also adjust brushes so they just contact cement.

NOTE: IF SWEEPER PUSHES HARD, THE BRUSHES OR HOOD EXTENSION IS SET TOO LOW.

Adjusting Handle Height. Two separate heights are provided for with sweeper handle. To raise handle to high position (see illustration):

1. Remove basket from sweeper.
2. Remove hardware, Ref. Nos. 4, 12 and 13, Fig. 2, which holds upper and lower handles together.
3. Turn handle over so handle level is in high position and replace parts as before.



Sweep your lawn of unsightly grass clippings and weed cuttings that will smother the grass. To leave clippings on the lawn will cause a "mat" which not only prevents sunlight and air from getting to the roots of the grass, but also is conducive to fungus diseases.

To Empty Basket. Basket may be removed for dumping or tip sweeper forward for end-over dumping.

Caution: The brush fiber is highly inflammable and it is recommended that basket be removed when dumping on a fire to avoid close contact of brushes and basket with fire.

Lubrication. Lubricate the sweeper periodically to insure long life and easy operation.

1. Oil wheel gears and pinion gears through oil hole on each side of wheel. Also oil rollers on rear of metal basket assembly. It is not necessary to oil nylon brush bearings.

Care and Replacement of Brushes. The brushes used on this sweeper are made of the finest bristles that will give years of service if given proper care. Should they become bent from constant use, dampening and straightening will reset the bristles upright. It is also possible to straighten bristles by reversing the brushes on the reel shaft.

To reverse or replace brushes:

1. Turn sweeper upside down on ground.
2. Remove the bolts which hold the brush sections to the reel shaft. Reverse and replace the brushes and retighten the bolts.

Storage. Remove basket springs from basket bottom, collapse basket and hang with rollers facing wall.

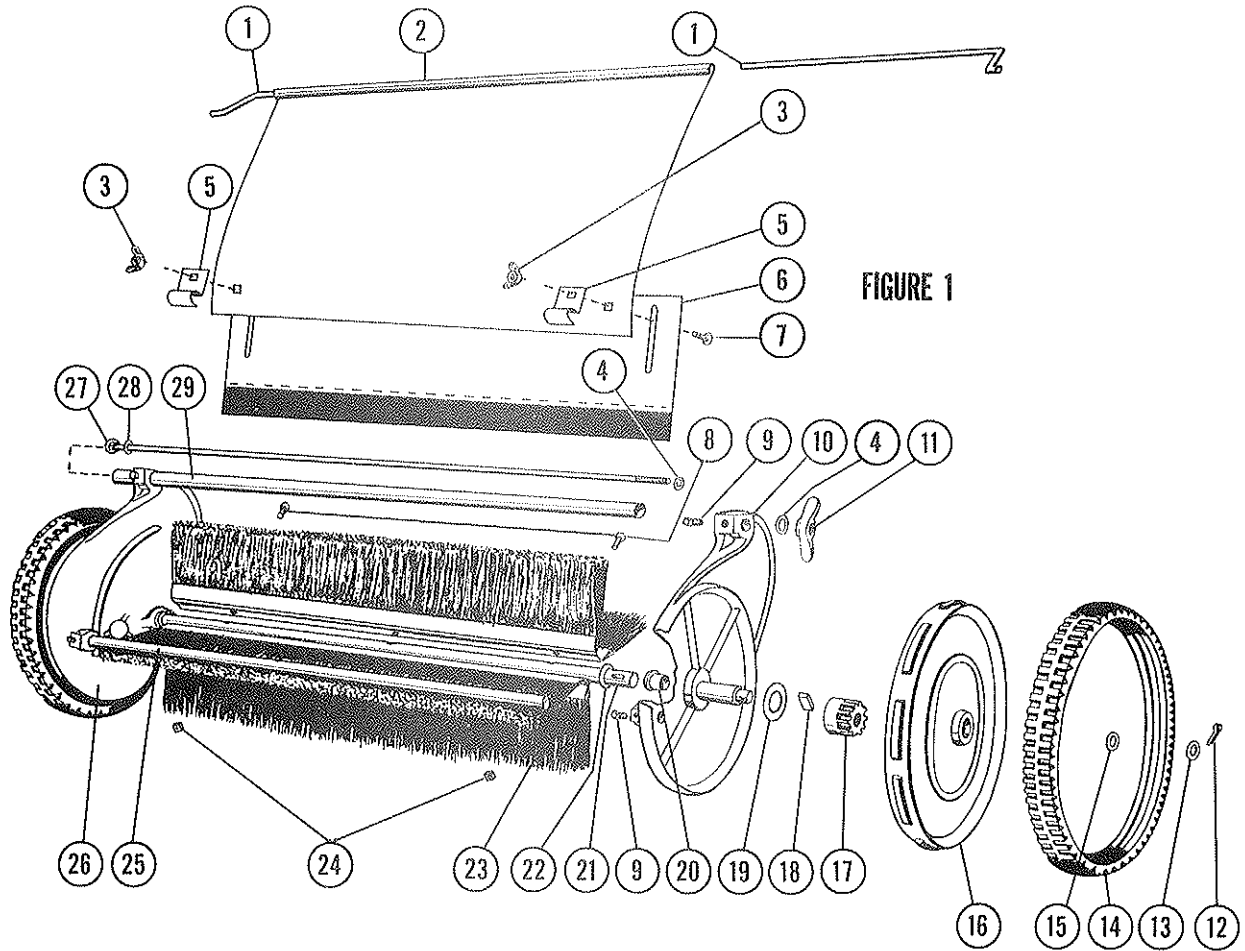
Caution. The basket fabric on your lawn sweeper is made of "Lumite," a polypropylene filament. This material is far superior to canvas and it won't fade or shrink, is resistant to mildew and rot. While "Lumite" is flame proof it is affected by excessive heat, therefore, to avoid deterioration of the fabric, we caution against unloading the basket over an open fire or allowing the sweeper to stand near fire.

PA-6320 SWEEPER UNIT ASSEMBLY

Figure 1

Ref. No.	Part No.	Qty. Per Unit	Description	Ref. No.	Part No.	Qty. Per Unit	Description
1	63-107-B	2	Rod - Hood Control	17	56-18-RC *	1	Pinion Gear - Right Hand 45-18-RA
2	63-105-D	1	Hood				(Not Shown)
3	351-416-18	2	Nut - Wing 1/4-20		56-19-L-C *	1	Pinion Gear - Left Hand 45-19-LA
4	*945-516	2	Washer - SAE Flat 3/16			1	(Shown)
5	60-22-B	2	Clamp - Hood	18	45-25-A *	2	Pawl
6	63-113-C	1	Extension - Hood Assembly	19	946-1216-24	2	Washer - Fiber
7	*70-416-12	2	Bolt - Carriage 1/4-20 x 3/4	20	59-28-A	2	Bearing - Nylon
8	*65-416-24	2	Bolt - Hex Head 1/4-20 x 1 1/2	21	50-67-B	1	Shaft - Reel
9	560-C-516-10	4	Screw - Sq. Head Set 3/16-18 x 3/4	22	55-161-A	2	Washer - Special
10	63-118-D	1	Side Plate - Left Hand	23	47-435-B	2	Brush Strip Assembly <i>R/W BK-1</i>
11	351-516-40	1	Nut - Wing 3/8-18 x 2 1/2	24	355-416-1	2	Stamped Square Nut 1/4-20
12	*380-332-12	2	Pin - Cotter 1/2 x 3/4	25	47-425-B	1	Rod - Bottom Tie
13	46-81-A	2	Washer - Special	26	62-43-RD	1	Side Plate - Right Hand
14	63-224-B	2	Tire	27	55-68-A	1	Bolt - Adjusting
15	946-816-16	2	Washer - Fiber	28	*945-616	1	Washer - SAE Flat 3/16
16	49-377-C	2	Wheel	29	63-107-A	1	Tube - Adjusting

* SA-1583-B
PINION KIT



ALWAYS GIVE THE FOLLOWING INFORMATION WHEN ORDERING REPAIR PARTS

If you are unable to obtain parts locally, write to the factory for name of nearest service dealer.

1. Part Number and Quantity.
2. Model Number (found on Hood or Side Plate).
3. Serial Number (found on Guarantee Card).

Your unit is right hand (R.H.) or left hand (L.H.) as you stand behind it.

*Standard hardware items may be purchased locally.

PA-6320 BASKET AND HANDLE ASSEMBLY

Figure 2

Ref. No.	Part No.	Qty. Per Unit	Description	Ref. No.	Part No.	Qty. Per Unit	Description
1	58-32-C	1	Handle — Upper	13	*351-416-18	2	Nut — Wing ¼-20
2	*515-416-10	2	Screw — Round Head ¼-20 x ¾	14	55-56-B	2	Handle — Lower
3	53-116-A	2	Clamp — Basket Spring	15	532-146	8	Screw — Sheet Metal No. 14 x ¾
4	*936-416	4	Washer — Int. Tooth Lock ¼	16	52-34-B	2	Roller — Assembly
5	53-114-B	2	Spring — Basket	17	*65-416-20	2	Bolt — Hex Head ¼-20 x 1½
6	*335-416	2	Nut — Hex ¼-20	18	*70-516-24	2	Bolt — Carriage ¾-18 x 1½
7	58-140-A	2	Rivet	19	53-169-LD	1	Bracket — Left Hand
8	58-27-A	2	Spring	20	*945-516	4	Washer — SAE Flat ¾
9	58-26-B	2	Bracket — Basket Lock	21	60-21-A	2	Bracket — Brush Adjusting
10	53-121-C1	1	Basket — With Rollers & Springs	22	54-227-A	2	Spacer
11	53-122-C1	1	Replacement Basket — Without Rollers &	23	*335-516	2	Nut — Hex ¾-18
12	*70-416-24	2	Spring — Replacement Bolt — Carriage ¼-20 x 1½	24	355-416-1	2	Stamped Square Nut ¼-20
				25	52-15-C	1	Support — Handle
				26	53-168-RD	1	Bracket — Right Hand

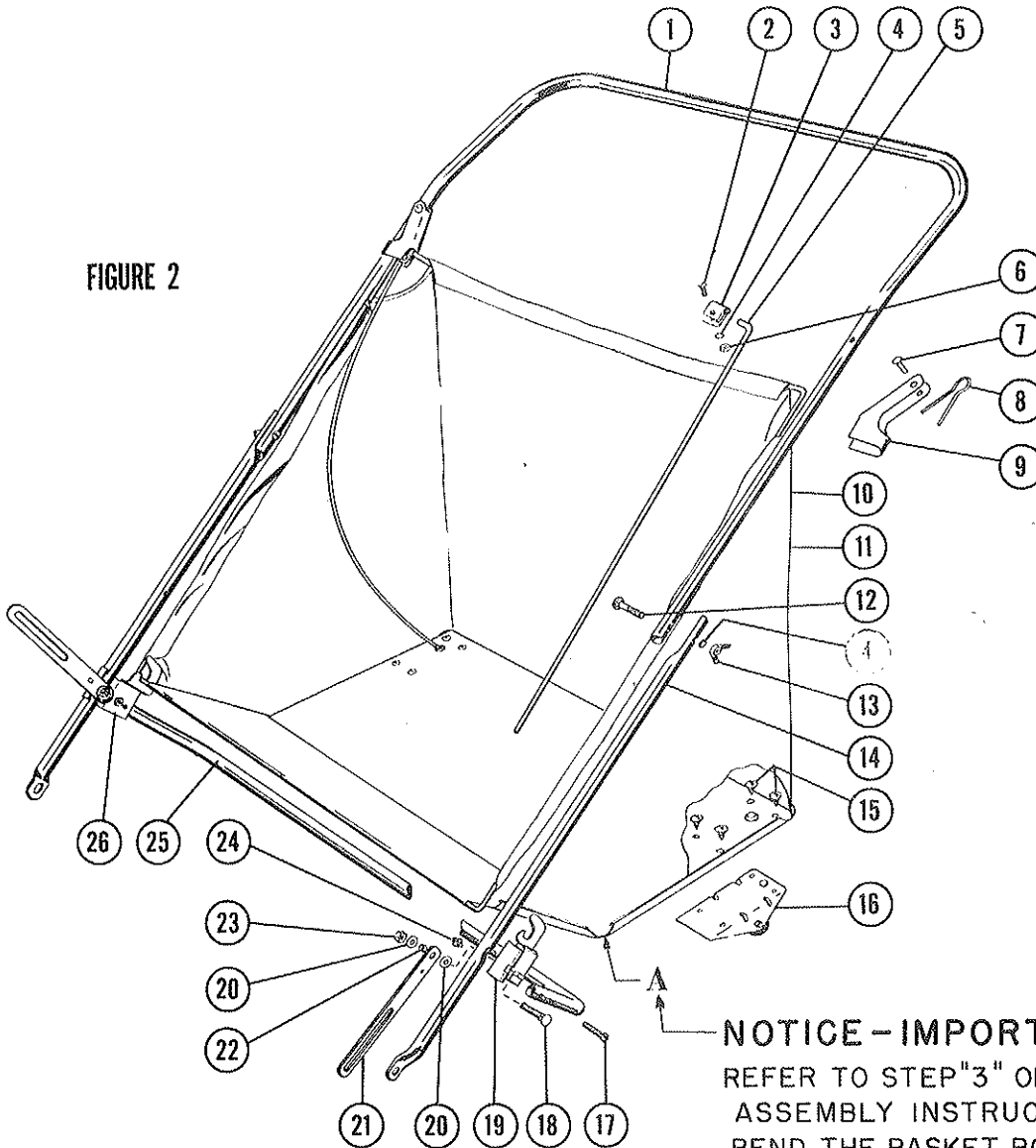


FIGURE 2

NOTICE — IMPORTANT
 REFER TO STEP "3" OF THE
 ASSEMBLY INSTRUCTIONS.
 BEND THE BASKET BOTTOM
 AS SHOWN AT POINT "A"