



Electronic Service Manuals

This electronic document is provided as a service to our customers. We do not create the contents of the information contained in this document. Should you have detailed questions pertaining to the information contained in this document, you may contact Michco, or the manufacturer which provided the original information in this electronic deliverable. Michco's only part in this electronic deliverable was the electronic assembly process. By providing this manual on line we are not guaranteeing parts availability.

You may contact Michco through the following methods:

Phone (517) 484-9312 or (800) 331-3339

2011 N. High St. -- Lansing, Michigan -- 48906

Fax: (517) 484-9836

Email: CustServe@Michco.com

Web site: www.Michco.Com

Parts Web site: www.FloorMachineParts.Com

Order Parts on Line at:

www.FloorMachineParts.Com

Directly to Parts & Service:

By Email: **Shop@Michco.com**

By Fax: (517) 702-2041

By Voice: Use numbers above.

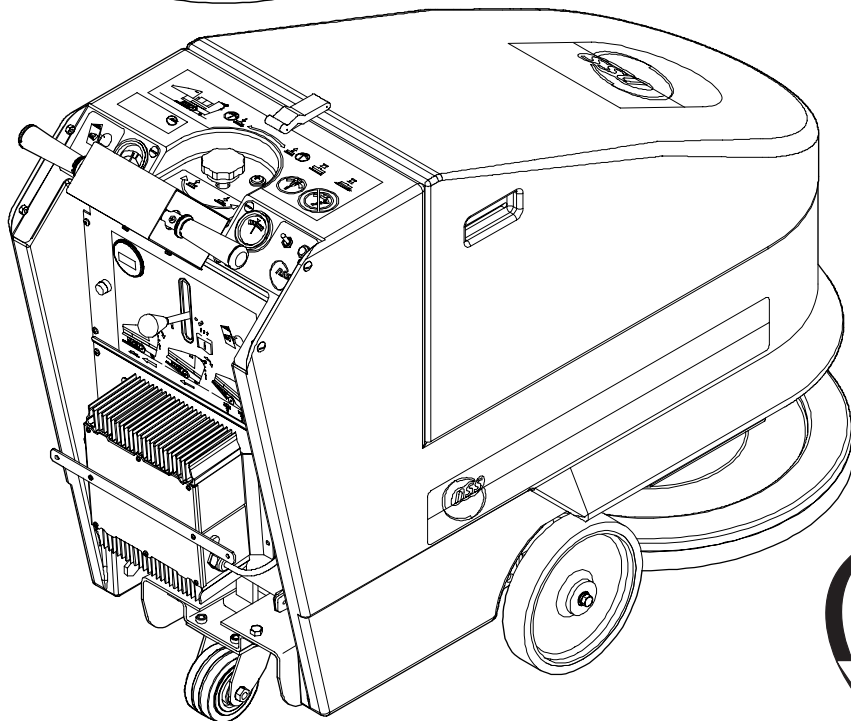
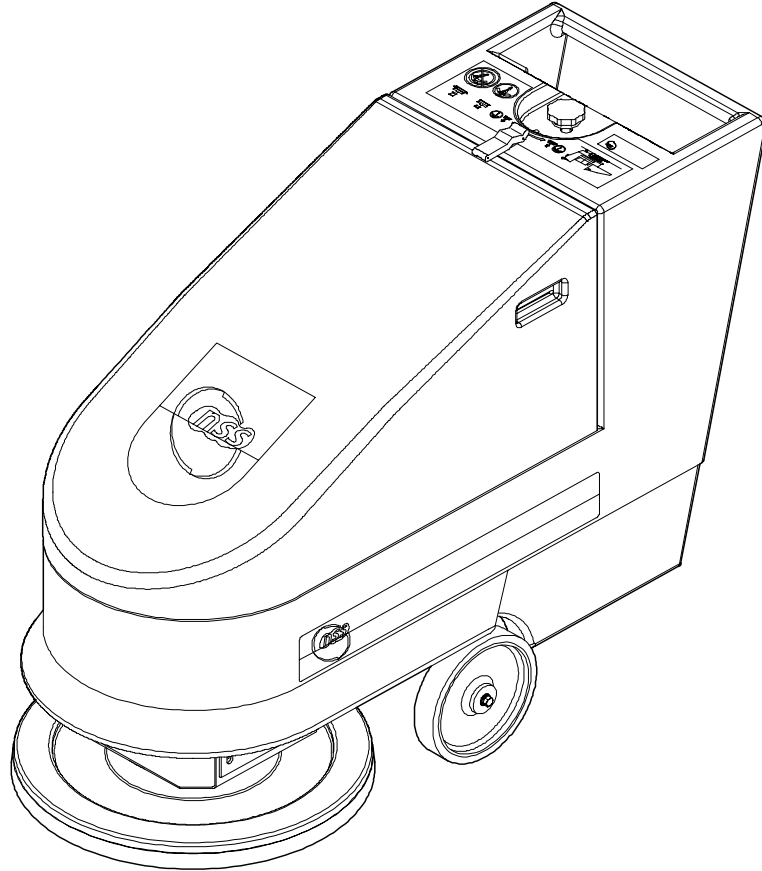
Serving the Cleaning Industry Since 1922

Notice: All copyrighted material remains property of original owners, all trademarks are property of respective owners. Manuals are subject to Manufacturer's reproduction limitations. Originals or reproductions were provided by manufacturers through a request. We make no warranty as to the correctness of information provided in this document and you assume all risk. By placing these manuals on line we are not declaring our corporation to be an manufacturer authorized dealer or provider, please check our web site for authorized manufacturers we represent.

PARTS LIST

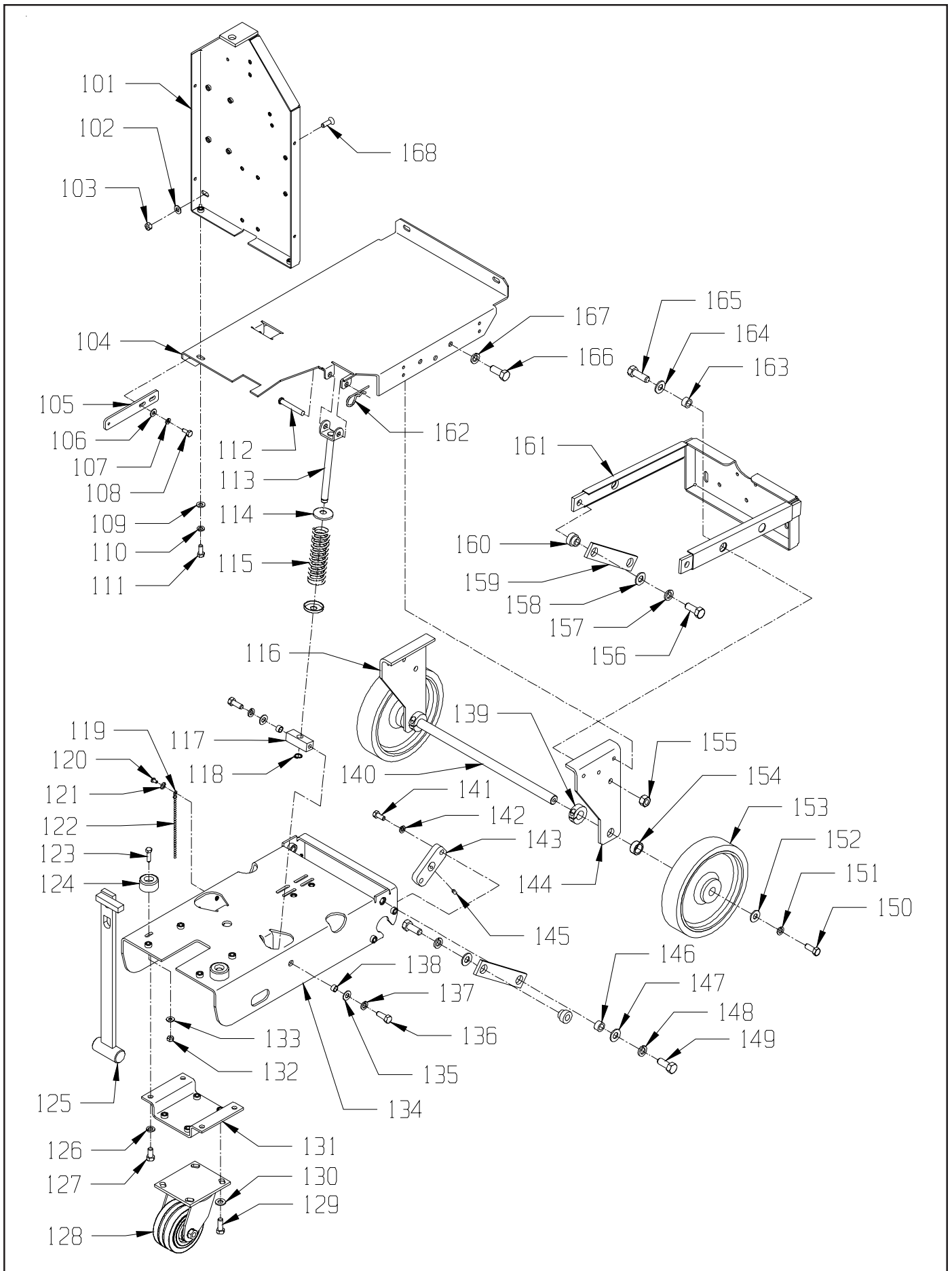
CHARGER 2020 AB

CHARGER 2020 DB



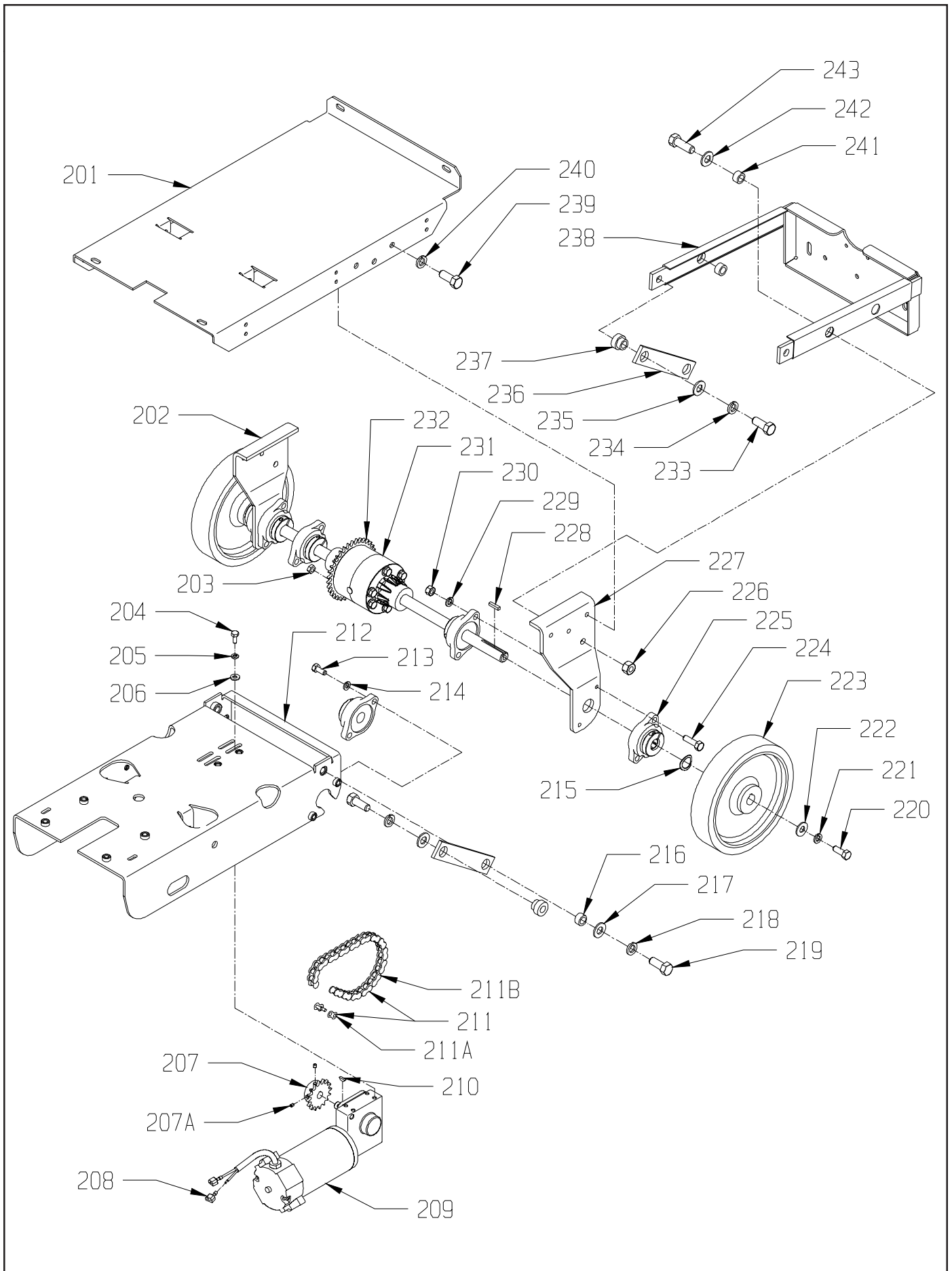
ITEM	PART NO.	DESCRIPTION	QTY.
101	6495511	CONTROL FRAME WELDMENT	1
102	9121390	11/32 I.D. X 11/16 O.D. X .051/.080 THICK SAE FLAT WASHER (5/16)	2
103	9121450	5/16-18 HEX NUT WITH NY-LOK INSERT	2
104	6495071	BASE PLATE	1
105	6495831	HINGE PLATE	2
106	9120930	9/32 I.D. X 5/8 O.D. X .051/.080 THICK SAE FLAT WASHER (1/4)	4
107	9120880	1/4 SPLIT LOCK WASHER	4
108	9121210	1/4-20 X 5/8 HEX BOLT	4
109	9121390	11/32 I.D. X 11/16 O.D. X .051/.080 THICK SAE FLAT WASHER (5/16)	2
110	9121520	5/16 SPLIT LOCK WASHER	2
111	9121640	5/16-18 X 3/4 HEX BOLT	2
112	7690311	3/8 DIAMETER X 2.5 CLEVIS PIN	1
113	6495881	SPRING GUIDE	2
114	3190191	STRING GUARD	4
115	6495871	COMPRESION SPRING	2
116	6495241	BASE LEG CHARGER - LEFT	1
117	6495891	PIVOT	2
118	5091701	RETAINING RING	2
119	6491871	END COUPLING ROUND BEAD CHAIN	1
120	9120380	10-24 X 3/8 ROUND HEAD PHILLIPS MACHINE SCREW	1
121	9120330	10 EXTERNAL STAR LOCK WASHER	1
122	6491860	ROUND BEAD CHAIN (CUT LENGTH 6")	.5'
123	9121270	1/4-20 X 1 HEX BOLT	2
124	4894461	RUBBER STOP	2
125	6490701	CATCH ASSEMBLY	1
126	9122100	3/8 SPLIT LOCK WASHER	4
127	9122220	3/8-16 X 3/4 HEX BOLT	4
128	6492061	RED 4 INCH CASTER - INCLUDES:	1
	4490391	CASTER WHEEL WITH BEARING	1
129	9122260	3/8-16 X 1 HEX BOLT	4
130	9122100	3/8 SPLIT LOCK WASHER	4
131	6495141	CASTER MOUNT	1
132	9120900	1/4-20 HEX NUT WITH NY-LOK INSERT	2
133	9120930	9/32 I.D. X 5/8 O.D. X .051/.080 THICK SAE FLAT WASHER (1/4)	2
134	6495151	FRAME	1
135	9122180	13/32 I.D. X 13/16 O.D. X .051/.080 THICK WROUGHT WASHER (3/8)	4
136	9122260	3/8-16 X 1 HEX BOLT	4
137	9122100	3/8 SPLIT LOCK WASHER	4
138	2691181	PIVOT SPACER, STABILIZER BAR	4
139	6490201	SUPPORT-LEG, SHAFT COLLAR	2
140	4492546	AXLE, BASE PLATED	1
141	9122260	3/8-16 X 1 HEX BOLT	4
142	9122100	3/8 SPLIT LOCK WASHER	4
143	6495271	AXLE BLOCK	2
144	6495231	BASE LEG CHARGER - RIGHT	1
145	9120637	1/4-20 X 1/4 SET SCREW - CUP POINT	2
146	4492791	BUSHING, PIVOT	2
147	9122450	17/32 I.D. X 1 1/16 O.D. X .074/.121 THICK SAE FLAT WASHER (1/2)	2
148	9122420	1/2 SPLIT LOCK WASHER	2
149	9122540	1/2-13 X 1 1/4 HEX BOLT	2
150	9122260	3/8-16 X 1 HEX BOLT	2
151	9122100	3/8 SPLIT LOCK WASHER	2
152	9122180	13/32 I.D. X 13/16 O.D. X .051/.080 THICK WROUGHT WASHER (3/8)	2
153	4490511	WHEEL - 8"	2
154	4492921	WHEEL SPACER	2
155	9122495	1/2-13 HEX NUT WITH NY-LOK INSERT - THIN	2
156	9122540	1/2-13 X 1 1/4 HEX BOLT	2
157	9122420	1/2 SPLIT LOCK WASHER	2
158	9122450	17/32 I.D. X 1 1/16 O.D. X .074/.121 THICK SAE FLAT WASHER (1/2)	2
159	6490691	LIFT ARM	2
160	4495141	LIFT ARM SPACER	2
161	6495501	PIVOT WELDMENT	1
162	7690491	#6 HAIR COTTER PIN	2
163	4492791	BUSHING, PIVOT	2
164	9122450	17/32 I.D. X 1 1/16 O.D. X .074/.121 THICK SAE FLAT WASHER (1/2)	2
165	9122540	1/2-13 X 1 1/4 HEX BOLT	2
166	9122220	3/8-16 X 3/4 HEX BOLT	6
167	9122100	3/8 SPLIT LOCK WASHER	6
168	9121470	5/16-18 X 1 FLAT HEAD PHILLIPS MACHINE SCREW	4

BASE - AB



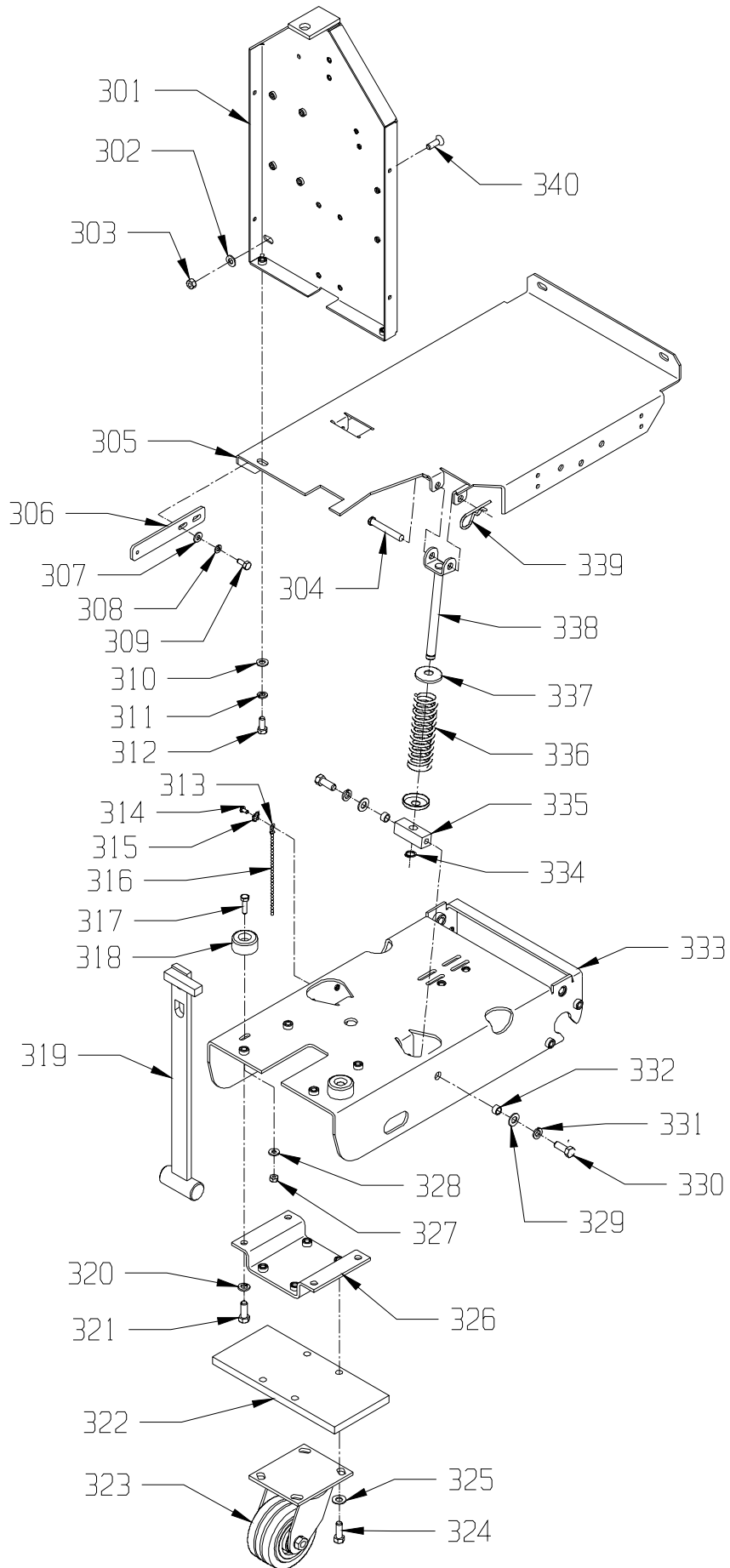
<u>ITEM</u>	<u>PART NO.</u>	<u>DESCRIPTION</u>	<u>QTY.</u>
201	6495071	BASE PLATE	1
202	6495261	BASE LEG CHARGER WHEEL DRIVE - LEFT	1
203	9121450	5/16-18 HEX NUT WITH NY-LOK INSERT	4
204	9121210	1/4-20 X 5/8 HEX BOLT	4
205	9120880	1/4 SPLIT LOCK WASHER	4
206	9120930	9/32 I.D. X 5/8 O.D. X .051/.080 THICK SAE FLAT WASHER (1/4)	4
207	6495531	SPROCKET 40BS12H - INCLUDES:	1
207A	9120637	10-24 X 1/4 SET SCREW - CUP POINT	2
208	5490161	FULLY INSULATED FEMALE TERMINAL 14-16 GAGE	2
209	6495291	DRIVE MOTOR 36 VOLT	1
210	9120013	1/8 SQUARE X 1/2 LONG WOODRUFF KEY - STEEL	1
211	6495569	#40 ROLLER CHAIN 33 LINKS + MASTER - INCLUDES:	1
211A	2795211	LINK - MASTER #40 CHAIN	1
211B	6495541	#40 ROLLER CHAIN 33 LINKS NO MASTER	1
212	6495151	FRAME	1
213	9122260	3/8-16 X 1 HEX BOLT	4
214	9122100	3/8 SPLIT LOCK WASHER	4
215***	9123110	13/16 I.D. X 1 1/8 O.D. X .13 THICK WAVE SPRING WASHER (3/4)	2
216	4492791	BUSHING, PIVOT	2
217	9122450	17/32 I.D. X 1 1/16 O.D. X .074/.121 THICK SAE FLAT WASHER (1/2)	2
218	9122420	1/2 SPLIT LOCK WASHER	2
219	9122540	1/2-13 X 1 1/4 HEX BOLT	2
220	9121640	5/16-18 X 3/4 HEX BOLT	2
221	9121520	5/16 SPLIT LOCK WASHER	2
222	9121985	13/32 I.D. X 1 O.D. X .12 THICK FLAT WASHER (11 GAGE)	2
223	6495391	DRIVE WHEEL 9 X 1 5/8	2
224	9122075	3/8-16 X 1 1/2 HEX BOLT	4
225	6495061	PILLOW BLOCK BEARING WITH GRIP-IT BEARING RING	6
226	9122495	1/2-13 HEX NUT WITH NY-LOK INSERT - THIN	2
227	6495251	BASE LEG CHARGER WHEEL DRIVE - RIGHT	1
228	9120825	3/16 SQUARE X 7/8 LONG KEY - STEEL	2
229	9122100	3/8 SPLIT LOCK WASHER	4
230	9121990	3/8-16 HEX JAM NUT	4
231	6495101	DIFFERENTIAL - SHORT	1
232	6495521	SPROCKET 40A26	1
233	9122540	1/2-13 X 1 1/4 HEX BOLT	2
234	9122420	1/2 SPLIT LOCK WASHER	2
235	9122450	17/32 I.D. X 1 1/16 O.D. X .074/.121 THICK SAE FLAT WASHER (1/2)	2
236	6490691	LIFT ARM	2
237	4495141	LIFT ARM SPACER	2
238	6495501	PIVOT WELDMENT	1
239	9122220	3/8-16 X 3/4 HEX BOLT	6
240	9122100	3/8 SPLIT LOCK WASHER	6
241	4492791	BUSHING, PIVOT	2
242	9122450	17/32 I.D. X 1 1/16 O.D. X .074/.121 THICK SAE FLAT WASHER (1/2)	2
243	9122540	1/2-13 X 1 1/4 HEX BOLT	2

DRIVE - DB



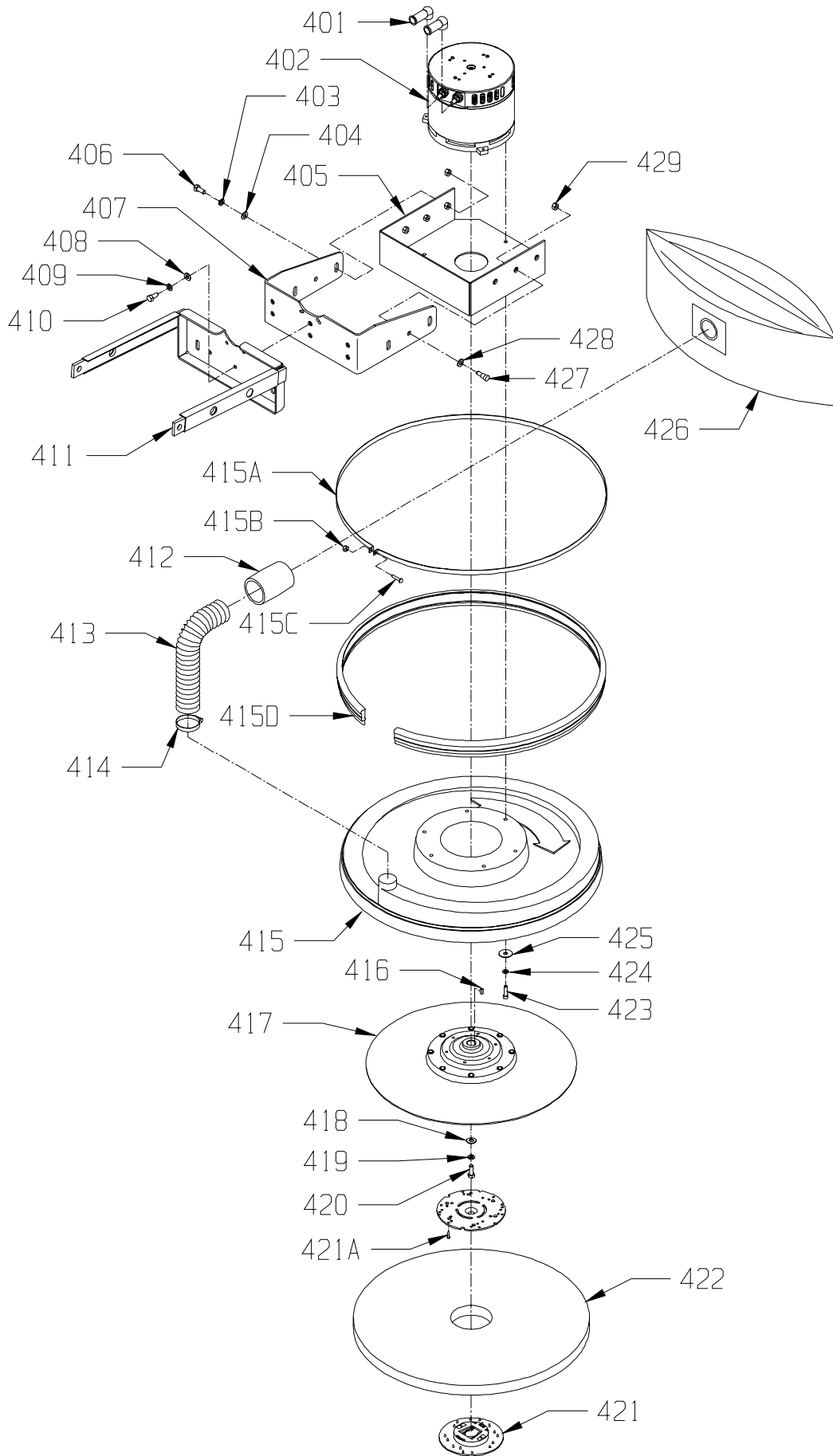
<u>ITEM</u>	<u>PART NO.</u>	<u>DESCRIPTION</u>	<u>QTY.</u>
301	6495511	CONTROL FRAME WELDMENT	1
302	9121390	11/32 I.D. X 11/16 O.D. X .051/.080 THICK SAE FLAT WASHER (5/16)	2
303	9121450	5/16-18 HEX NUT WITH NY-LOK INSERT	2
304	7690311	3/8 DIAMETER X 2.5 CLEVIS PIN	2
305	6495071	BASE PLATE	1
306	6495831	HINGE PLATE	2
307	9120930	9/32 I.D. X 5/8 O.D. X .051/.080 THICK SAE FLAT WASHER (1/4)	4
308	9120880	1/4 SPLIT LOCK WASHER	4
309	9121210	1/4-20 X 5/8 HEX BOLT	4
310	9121390	11/32 I.D. X 11/16 O.D. X .051/.080 THICK SAE FLAT WASHER (5/16)	2
311	9121520	5/16 SPLIT LOCK WASHER	2
312	9121640	5/16-18 X 3/4 HEX BOLT	2
313	6491871	END COUPLING ROUND BEAD CHAIN	1
314	9120380	10-24 X 3/8 ROUND HEAD PHILLIPS MACHINE SCREW	1
315	9120330	10 EXTERNAL STAR LOCK WASHER	1
316	6491860	ROUND BEAD CHAIN (CUT LENGTH 6")	.5'
317	9121270	1/4-20 X 1 HEX BOLT	2
318	4894461	RUBBER STOP	2
319	6490701	CATCH ASSEMBLY	1
320	9122100	3/8 SPLIT LOCK WASHER	4
321	9122220	3/8-16 X 3/4 HEX BOLT	4
322	6495461	CASTER BLOCK	1
323	6492061	RED 4 INCH CASTER - INCLUDES:	1
	4490391	CASTER WHEEL WITH BEARING	1
324	9122075	3/8-16 X 1 1/2 HEX BOLT	4
325	9122100	3/8 SPLIT LOCK WASHER	4
326	6495141	CASTER MOUNT	1
327	9120900	1/4-20 HEX NUT WITH NY-LOK INSERT	2
328	9120930	9/32 I.D. X 5/8 O.D. X .051/.080 THICK SAE FLAT WASHER (1/4)	2
329	9122180	13/32 I.D. X 13/16 O.D. X .051/.080 THICK (3/8)	4
330	9122260	3/8-16 X 1 HEX BOLT	4
331	9122100	3/8 SPLIT LOCK WASHER	4
332	2691181	PIVOT SPACER, STABILIZER BAR	4
333	6495151	FRAME	1
334	5091701	RETAINING RING	2
335	6495891	PIVOT	2
336	6495871	COMPRESION SPRING	2
337	3190191	STRING GUARD	4
338	6495881	SPRING GUIDE	2
339	7690491	#6 HAIR COTTER PIN	2
340	9121470	5/16-18 X 1 FLAT HEAD PHILLIPS MACHINE SCREW	2

BASE - DB



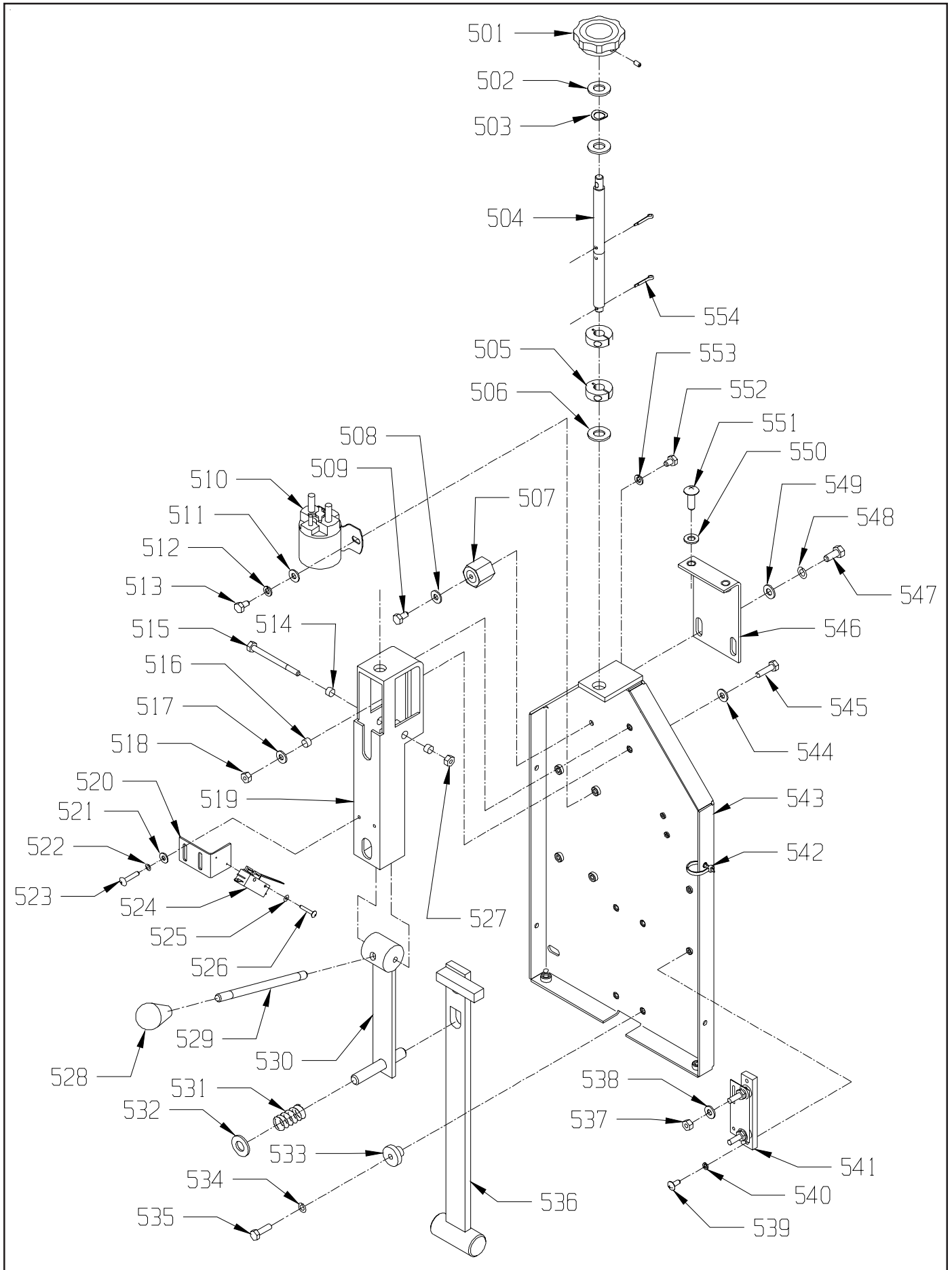
ITEM	PART NO.	DESCRIPTION	QTY.
401	6492051	STUD TERMINAL BOOT - RUBBER	2
402	6493511	MOTOR 2000 RPM, 36 VOLT - IMPERIAL	1
403	9121520	5/16 SPLIT LOCK WASHER – AB MODEL ONLY	6
404	9121400	3/8 I.D. X 7/8 O.D. X .064/.104 THICK WROUGHT WASHER - AB MODEL ONLY	4
405	4492663	MOTOR MOUNT	1
406	9121680	5/16-18 X 1 HEX BOLT - AB MODEL ONLY	4
407	6495601	MOTOR MOUNT MOUNTING FORK - CHARGER 2025	1
408	9121390	11/32 I.D. X 11/16 O.D. X .051/.080 THICK SAE FLAT WASHER (5/16)	3
409	9121520	5/16 SPLIT LOCK WASHER	3
410	9121640	5/16-18 X 3/4 HEX BOLT	3
411	6495501	PIVOT WELDMENT	1
412	4495531	END CUFF - 2"	1
413	3392561	VAC EXHAUST HOSE	1
414	4495441	HOSE CLAMP, 1 9/16" - 2 1/2" DIAMETER	1
415	6490729	CW-FLEXIWALL SHIELD ASSEMBLY - INCLUDES:	1
415A	6490732	BUMPER STRAP	1
415B	9120350	10-24 HEX NUT WITH NY-LOK INSERT	1
415C	9120450	10-24 X 1 ROUND HEAD PHILLIPS MACHINE SCREW	1
415D	6490191	BUMPER / BRUSH	1
416	9120815	3/16 SQUARE X 1/2 LONG KEY - STEEL	1
417	6492568	PAD DRIVER - 20" ASSEMBLED & BALANCED	1
418	9121985	13/32 I.D. X 1 O.D. X .12 THICK FLAT WASHER (11 GAGE)	1
419	9121520	5/16 SPLIT LOCK WASHER	1
420	9121490	5/16-24 X 7/8 HEX BOLT	1
421	5990731	SPRING CLIP PAD HOLDER SET - INCLUDES:	1
421A	9120810	10 X 1/2 PAN HEAD PHILLIPS SHEET METAL SCREW	3
422	6492001	20" LUST LITE BURNISH PAD - CASE (5)	1
423	9120980	1/4-20 X 1 SOCKET HEAD CAP SCREW	3
424	9120880	1/4 SPLIT LOCK WASHER	3
425	9120950	1/4 X 1 1/4 FENDER WASHER	3
426	5796101	PAPER BAG - 5 PACK	1
	6592801	VAC TRAC COLLECTION BAG - OPTIONAL	1
427	9122020	3/8 DIAMETER X 3/8 LONG SOCKET HEAD SHOULDER BOLT (5/16-18) (QTY. 6 ON DB MODEL)	2
428	9121400	3/8 I.D. X 7/8 O.D. X .064/.104 THICK WROUGHT WASHER - AB MODEL ONLY	2
429	9121430	5/16-18 THIN HEX NUT WITH NY-LOK INSERT (QTY. 6 ON DB MODEL)	2

SHIELD AND PAD DRIVER



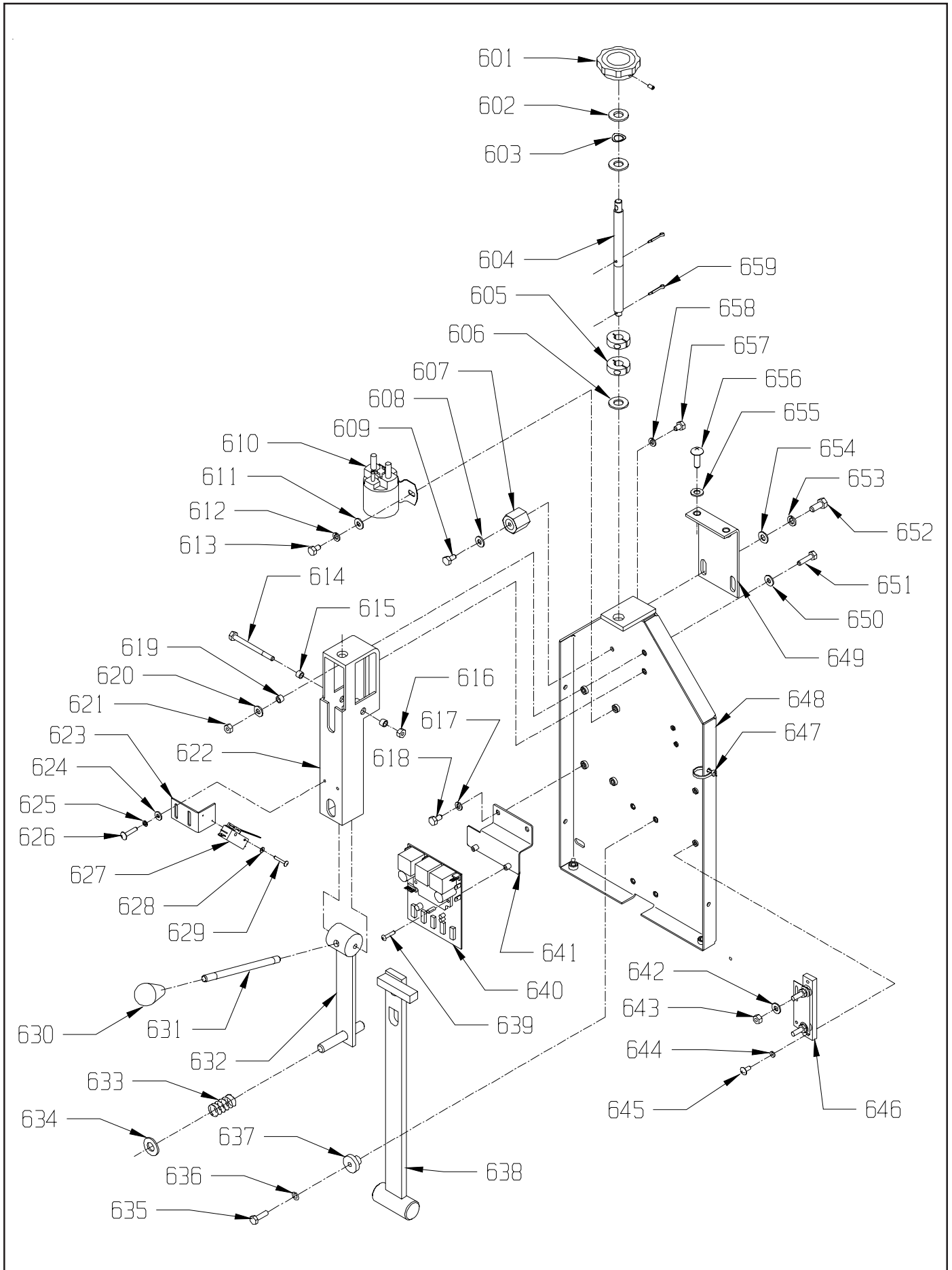
ITEM	PART NO.	DESCRIPTION	QTY.
501	4490521	LOAD ADJUST KNOB (INCLUDES SET SCREW)	1
502	9122450	17/32 I.D. X 1 1/16 O.D. X .074/.121 THICK SAE FLAT WASHER (1/2)	2
503	9122705	1/2 I.D. X 3/4 O.D. X .01 THICK 1 WAVE SPRING WASHER (1/2)	1
504	6490611	ADJUSTMENT ROD	1
505	6490621	ADJUSTMENT ROD COLLAR	2
506	9122180	13/32 I.D. X 13/16 O.D. X .051/.080 THICK SAE FLAT WASHER (3/8)	1
507	4490561	INSULATED STANDOFF	1
508	9120970	1/4 EXTERNAL STAR LOCK WASHER	1
509	9121210	1/4-20 X 5/8 HEX BOLT	1
510	4491011	SOLENOID, 36 VOLT	1
511	9120930	9/32 I.D. X 5/8 O.D. X .051/.080 THICK SAE FLAT WASHER (1/4)	2
512	9120880	1/4 SPLIT LOCK WASHER	2
513	9121170	1/4-20 X 1/2 HEX BOLT	2
514	2791281	BUSHING SPACER	2
515	9121287	1/4-20 X 2 1/2 HEX BOLT - STEEL	1
516	2791281	BUSHING SPACER	2
517	9120930	9/32 I.D. X 5/8 O.D. X .051/.080 THICK SAE FLAT WASHER (1/4)	2
518	9120900	1/4-20 HEX NUT WITH NY-LOK INSERT	2
519	6490601	ADJUSTMENT BRACKET	1
520	4495326	SWITCH BRACKET	1
521	9120370	7/32 I.D. X 1/2 O.D. X .032/.065 THICK SAE FLAT WASHER (10)	2
522	9120320	10 SPLIT LOCK WASHER	2
523	9120460	10-24 X 1 1/4 ROUND HEAD PHILLIPS MACHINE SCREW	2
524	4491071	SNAP SWITCH	1
525	9120130	6 EXTERNAL STAR LOCK WASHER	2
526	9120090	6-32 X 7/8 PAN HEAD PHILLIPS MACHINE SCREW	2
527	9120900	1/4-20 HEX NUT WITH NY-LOK INSERT	2
528	4490601	KNOB, RAISE / LOWER ROD	1
529	6490101	LATCH HANDLE	1
530	6490091	LATCH ASSEMBLY	1
531	4490631	COMPRESSION SPRING	1
532	9122450	17/32 I.D. X 1 1/16 O.D. X .074/.121 THICK SAE FLAT WASHER (1/2)	2
533	4495351	SPACER GUIDE	4
534	9120880	1/4 SPLIT LOCK WASHER	4
535	9121270	1/4-20 X 1 HEX BOLT	4
536	6490701	CATCH ASSEMBLY	1
537	9120920	1/4-20 HEX NUT	2
538	9120970	1/4 EXTERNAL STAR LOCK WASHER	2
539	9120410	10-24 X 1/2 ROUND HEAD PHILLIPS MACHINE SCREW	2
540	9120320	10 SPLIT LOCK WASHER	2
541	4491031	SHUNT	1
542	9123005	1/8 X 5 1/2 WIRE TIE	4
543	6495511	CONTROL FRAME WELDMENT	1
544	9120970	1/4 EXTERNAL STAR LOCK WASHER	2
545	9121270	1/4-20 X 1 HEX BOLT	2
546	4492801	TOP SUPPORT BRACKET	1
547	9121640	5/16-18 X 3/4 HEX BOLT	2
548	9121520	5/16 SPLIT LOCK WASHER	2
549	9121390	11/32 I.D. X 11/16 O.D. X .051/.080 THICK SAE FLAT WASHER (5/16)	2
550	9121400	3/8 I.D. X 7/8 O.D. X .064/.104 THICK WROUGHT WASHER (5/16)	2
551	9121480	5/16-18 X 1 ROUND HEAD PHILLIPS MACHINE SCREW	2
552	9121160	1/4-20 X 3/8 HEX BOLT	1
553	9120880	1/4 SPLIT LOCK WASHER	4
554	9120310	1/8 X 3/4 COTTER PIN	2

CONTROL FRAME - AB



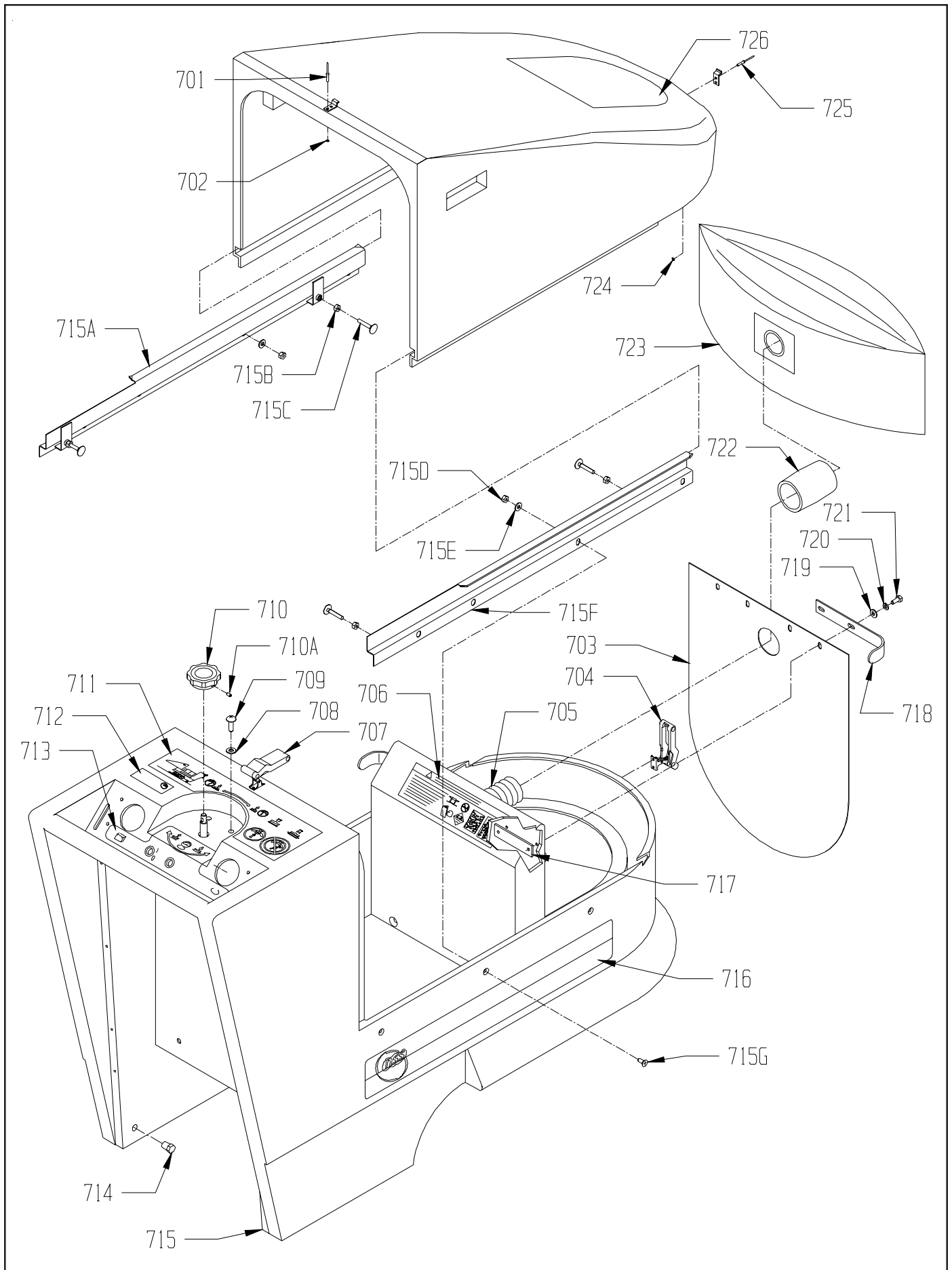
<u>ITEM</u>	<u>PART NO.</u>	<u>DESCRIPTION</u>	<u>QTY.</u>
601	4490521	LOAD ADJUST KNOB (INCLUDES SET SCREW)	1
602	9122450	17/32 I.D. X 1 1/16 O.D. X .074/.121 THICK SAE FLAT WASHER (1/2)	2
603	9122705	1/2 I.D. X 3/4 O.D. X .01 THICK 1 WAVE SPRING WASHER (1/2)	1
604	6490611	ADJUSTMENT ROD	1
605	6490621	ADJUSTMENT ROD COLLAR	2
606	9122180	13/32 I.D. X 13/16 O.D. X .051/.080 THICK WROUGHT WASHER (3/8)	1
607	4490561	INSULATED STANDOFF	1
608	9120970	1/4 EXTERNAL STAR LOCK WASHER	1
609	9121250	1/4-20 X 3/4 HEX BOLT	1
610	4491011	SOLENOID, 36 VOLT	1
611	9120930	9/32 I.D. X 5/8 O.D. X .051/.080 THICK SAE FLAT WASHER (1/4)	2
612	9120880	1/4 SPLIT LOCK WASHER	2
613	9121170	1/4-20 X 1/2 HEX BOLT	2
614	9121287	1/4-20 X 2 1/2 HEX HEAD BOLT - STEEL	1
615	2791281	BUSHING SPACER	2
616	9120900	1/4-20 HEX NUT WITH NY-LOK INSERT	1
617	9120880	1/4 SPLIT LOCK WASHER	2
618	9121170	1/4-20 X 1/2 HEX BOLT	2
619	2791281	BUSHING SPACER	2
620	9120930	9/32 I.D. X 5/8 O.D. X .051/.080 THICK SAE FLAT WASHER (1/4)	2
621	9120900	1/4-20 HEX NUT WITH NY-LOK INSERT	2
622	6490601	ADJUSTMENT BRACKET WELDMENT	1
623	4495326	SWITCH BRACKET	1
624	9120370	7/32 I.D. X 1/2 O.D. X .032/.065 THICK SAE FLAT WASHER (#10)	2
625	9120320	10 SPLIT LOCK WASHER	2
626	9120460	10-24 X 1 1/4 ROUND HEAD PHILLIPS MACHINE SCREW	2
627	4491071	SNAP SWITCH	1
628	9120130	6 EXTERNAL STAR LOCK WASHER	2
629	9120090	6-32 X 7/8 PAN HEAD PHILLIPS MACHINE SCREW	2
630	4490601	KNOB, RAISE / LOWER ROD	1
631	6490101	LATCH HANDLE	1
632	6490091	LATCH ASSEMBLY	1
633	4490631	COMPRESSION SPRING	1
634	9122450	17/32 I.D. X 1 1/16 O.D. X .074/.121 THICK SAE FLAT WASHER (1/2)	1
635	9121145	1/4-20 X 2 HEX BOLT	4
636	9120880	1/4 SPLIT LOCK WASHER	4
637	4495351	SPACER GUIDE	4
638	6490701	CATCH ASSEMBLY	1
639	9120260	8-32 X 3/4 ROUND HEAD PHILLIPS MACHINE SCREW	2
640	2690021	SPEED CONTROL, CURTIS	1
641	6492473	SPEED CONTROL MOUNTING BRACKET	1
642	9120970	1/4 EXTERNAL STAR LOCK WASHER	2
643	9120920	1/4-20 HEX NUT	2
644	9120320	10 SPLIT LOCK WASHER	2
645	9120410	10-24 X 1/2 ROUND HEAD PHILLIPS MACHINE SCREW	2
646	4491031	SHUNT	1
647	9123005	1/8 X 5 1/2 WIRE TIE	4
648	6495511	CONTROL FRAME WELDMENT	1
649	4492801	TOP SUPPORT BRACKET	1
650	9120970	1/4 EXTERNAL STAR LOCK WASHER	2
651	9121270	1/4-20 X 1 HEX BOLT	2
652	9121640	5/16-18 X 3/4 HEX BOLT	2
653	9121520	5/16 SPLIT LOCK WASHER	2
654	9121390	11/32 I.D. X 11/16 O.D. X .051/.080 THICK SAE FLAT WASHER (5/16)	2
655	9121400	3/8 I.D. X 7/8 O.D. X .064/.104 THICK WROUGHT WASHER (5/16)	2
656	9121480	5/16-18 X 1 ROUND HEAD PHILLIPS MACHINE SCREW	2
657	9121170	1/4-20 X 1/2 HEX BOLT	1
658	9120880	1/4 SPLIT LOCK WASHER	1
659	9120310	1/8 X 3/4 COTTER PIN	2

CONTROL FRAME - DB



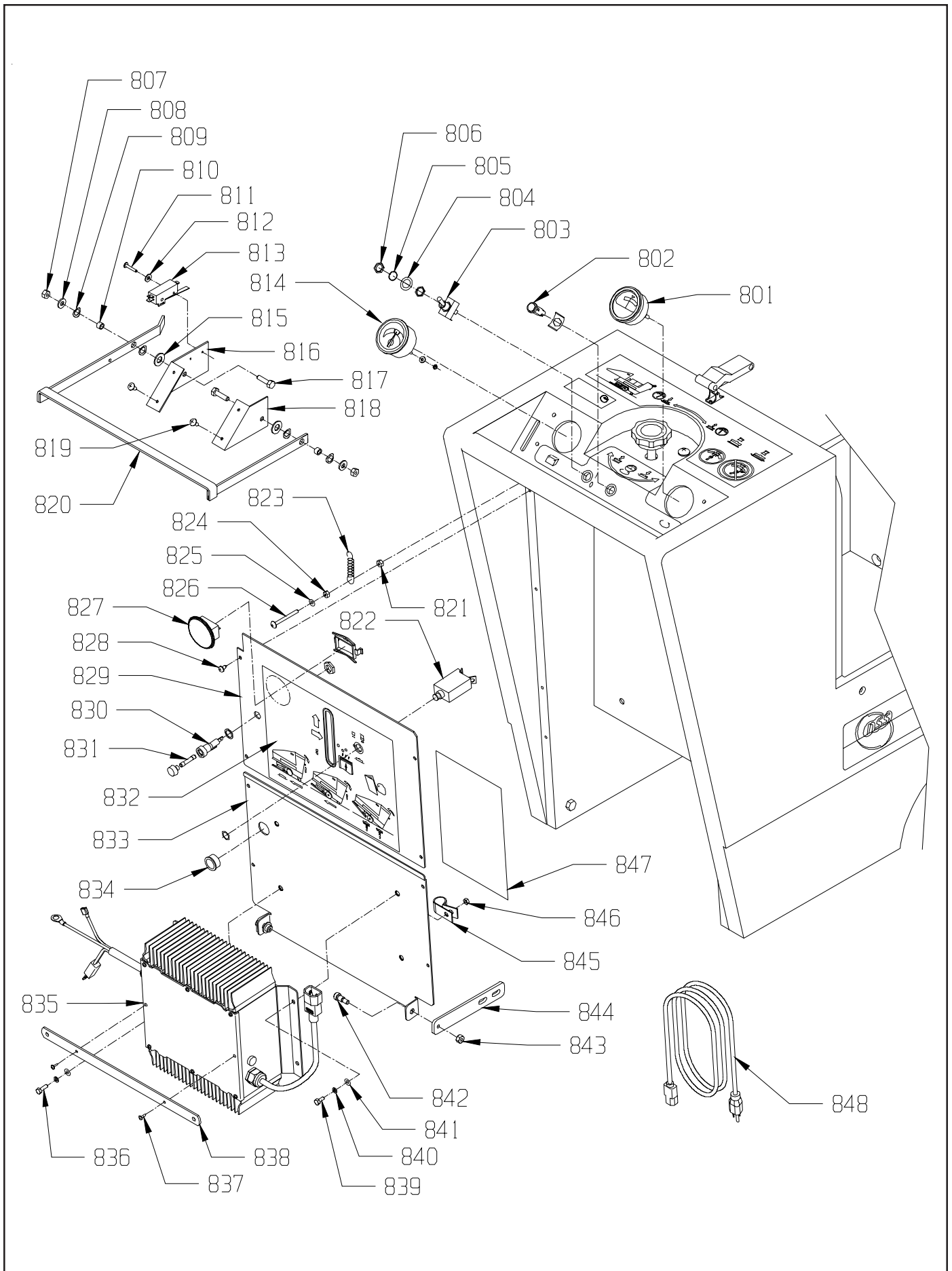
<u>ITEM</u>	<u>PART NO.</u>	<u>DESCRIPTION</u>	<u>QTY.</u>
701	9120317	5/32 X 5/8 DOME HEAD POP RIVET - STEEL	4
702	9120185	5/32 I.D. X 1/2 O.D. WASHER - STEEL - ZINC PLATE	4
703	6492261	RUBBER MOTOR COVER	1
704	6491171	SOFT DRAW LATCH WITH CONCEALED KEEPER	1
705	3392561	VAC EXHAUST HOSE	1
706	6495851	BATTERY WARNING DECAL - OBC	1
707	6491171	SOFT DRAW LATCH WITH CONCEALED KEEPER	1
708	9121400	3/8 I.D. X 7/8 O.D. X .064/.104 THICK WROUGHT WASHER (5/16)	2
709	9121480	5/16-18 X 1 ROUND HEAD PHILLIPS MACHINE SCREW	2
710	4490521	LOAD ADJUST KNOB - INCLUDES:	1
710A	9120650	10-32 X 3/4 SET SCREW	1
711	6495791	ENGLISH/SPANISH OPERATION DECAL	1
712	6493111	NAME IDENTIFIER DECAL CHARGER 2020 AB	1
713	6492801	DASH PANEL DECAL	1
714	6490951	1/4 MIPT PLUG	2
715	6490011	HOUSING WITH SLIDE RAILS	1
715A	6495441	SLIDE RAIL, LEFT	1
715B	9120920	1/4-20 HEX NUT	4
715C	9121039	1/4-20 X 1 1/2 ELEVATOR BOLT - ZINC PLATED	4
715D	9120900	1/4-20 HEX NUT WITH NY-LOK INSERT	6
715E	9120930	9/32 I.D. X 5/8 O.D. X .051/.080 THICK SAE FLAT WASHER (1/4)	6
715F	6495431	SLIDE RAIL, RIGHT	1
715G	9121037	1/4-20 X 5/8 FLAT HEAD PHILLIPS HEAD PHILLIPS MACHINE SCREW	6
716	6493061	SIDE DECAL - 3.5 X 26	2
717	6491211	TAPPING PLATE	2
718	6491191	HOOD STOP / SUPPORT BRACKET	2
719	9120930	9/32 I.D. X 5/8 O.D. X .051/.080 THICK SAE FLAT WASHER (1/4)	4
720	9120880	1/4 SPLIT LOCK WASHER	4
721	9121270	1/4-20 X 1 HEX BOLT	4
722	4495531	END CUFF - 2"	1
723	5796101	PAPER BAG - 5 PACK	1
	6592801	CLOTH FILTER BAG (OPTIONAL)	1
724	9120185	5/32 I.D. X 1/2 O.D. WASHER - STEEL - ZINC PLATE	4
725	9120317	5/32 X 5/8 DOME HEAD POP RIVET - STEEL	4
726	6492871	HOOD DECAL	1

HOUSING - AB



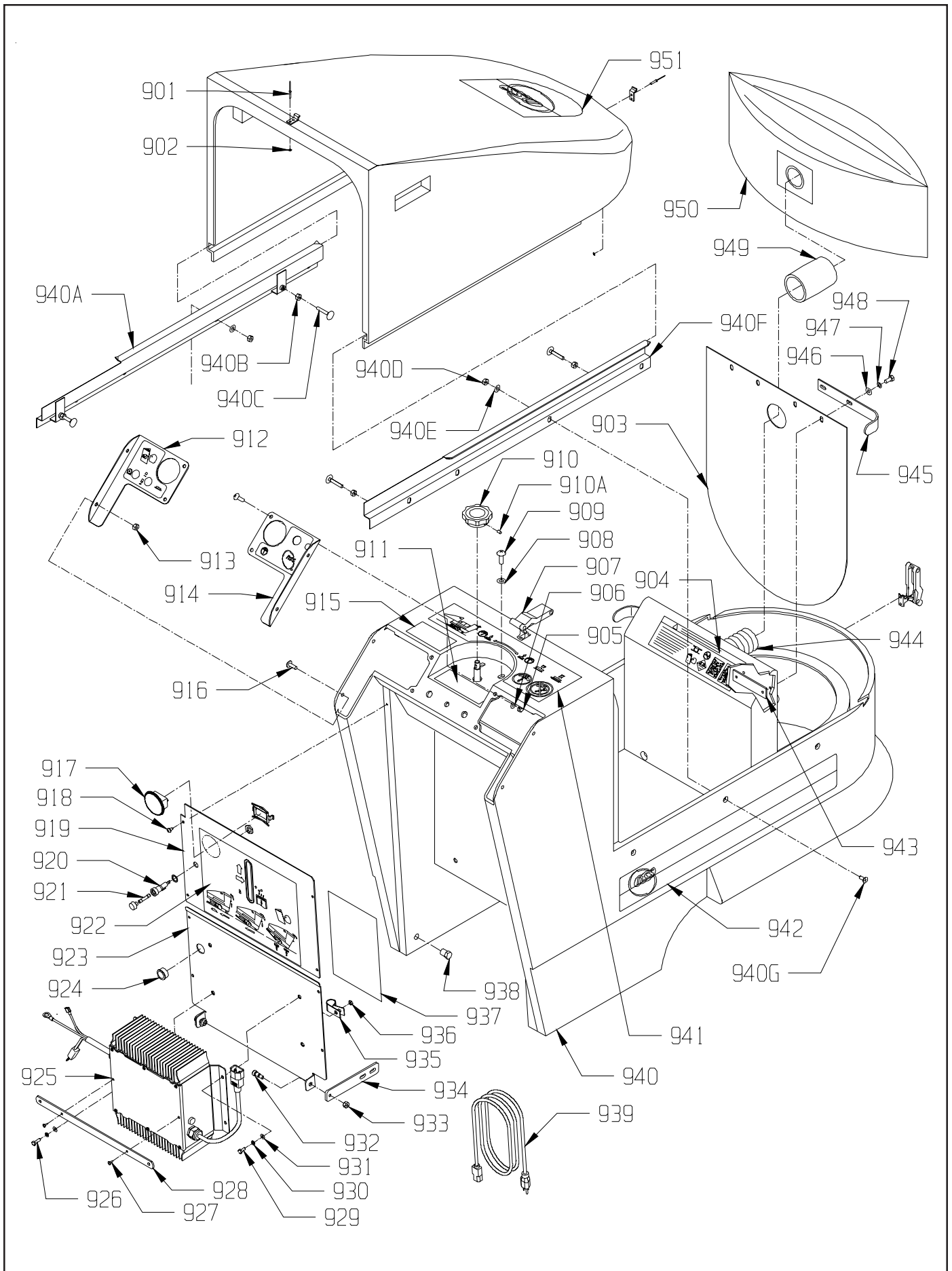
<u>ITEM</u>	<u>PART NO.</u>	<u>DESCRIPTION</u>	<u>QTY.</u>
801	4491041	RPM METER WITH HARDWARE	1
802	2691981	LIGHT - INDICATOR, GREEN, 35 VOLT, WITH CLIP	1
803	4491101	TOGGLE SWITCH, MOTOR	1
804	9122465	.516 I.D. X .813 O.D. X .027/.030 THICK FLAT WASHER	1
805	0691851	1/2 INTERNAL STAR LOCK WASHER	1
806	0798821	5/8 HEX NUT	1
807	9120900	1/4-20 HEX NUT WITH NY-LOK INSERT	2
808	9120930	9/32 I.D. X 5/8 O.D. X .051/.080 THICK SAE FLAT WASHER (1/4)	2
809	9122120	3/8 I.D. X 5/8 O.D. X .031 THICK 1 WAVE SPRING WASHER (3/8)	4
810	2791281	BUSHING SPACER	2
811	9120090	6-32 X 7/8 PAN HEAD PHILLIPS MACHINE SCREW	2
812	9120040	6 INTERNAL STAR LOCK WASHER	2
813	4491071	SNAP SWITCH	1
814	4491051	BATTERY METER 36 VOLT	1
815	9122180	13/32 I.D. X 13/16 O.D. X .051/.080 THICK SAE FLAT WASHER (3/8)	2
816	4492881	SWITCH PLATE - LEFT	1
817	9121270	1/4-20 X 1 HEX BOLT	2
818	4492901	SWITCH PLATE - RIGHT	1
819	9120510	10-24 X 1/2 TRUSS HEAD PHILLIPS MACHINE SCREW	4
820	4493046	HANDLE	1
821	9120350	10-24 HEX NUT WITH NY-LOK INSERT	1
822	4490701	CIRCUIT BREAKER - 70 AMP/ETA	1
823	4490641	EXTENSION SPRING	1
824	9120360	10-24 HEX NUT WITH STAR LOCK WASHER	1
825	9120370	7/32 I.D. X 1/2 O.D. X .032/.065 THICK SAE FLAT WASHER (10)	1
826	9120480	10-24 X 1 3/4 ROUND HEAD PHILLIPS MACHINE SCREW	1
827	2397361	HOUR METER (OPTIONAL)	1
828	9120790	10 X 5/8 PAN HEAD PHILLIPS SHEET METAL SCREW	8
829	6495813	UPPER REAR PANEL	1
830	4990321	FUSE HOLDER W/NUT & WASHER	1
831	6495741	3AG FAST-ACTING FUSE 4AMP	1
832	6492891	DECAL PAD POSITION	1
833	6495823	LOWER REAR PANEL	1
834	4890451	BUSHING, SNAP, #SB87511 HEYCO	1
835	6495691	36 VOLT ONBOARD CHARGER 120/240 VOLT 21 AMP	1
836	9121020	1/4-20 X 1 TRUSS HEAD PHILLIPS MACHINE SCREW	1
837	9120085	M3.5 X 19 PAN HEAD PHILLIPS MACHINE SCREW	2
838	2491283	CORD WRAP	1
839	9121000	1/4-20 X 5/8 TRUSS HEAD PHILLIPS MACHINE SCREW	3
840	9120880	1/4 SPLIT LOCK WASHER	4
841	9120930	9/32 I.D. X 5/8 O.D. X .051/.080 THICK SAE FLAT WASHER (1/4)	4
842	9121550	5/16 DIA. X 3/8 LONG SOCKET HEAD SHOULDER BOLT 1/4-20	2
843	9120900	1/4-20 HEX NUT WITH NY-LOK INSERT	2
844	6495831	HINGE PLATE	2
845	4890851	CABLE CLAMP, #COV-090 KMC	1
846	9120900	1/4-20 HEX NUT WITH NY-LOK INSERT	1
847	6495861	WIRING DECAL AB WITH ONBOARD CHARGER	1
848	6495711	240 VOLT ONBOARD CHARGER CORD - SHUKO	1

CONTROL PANEL - AB



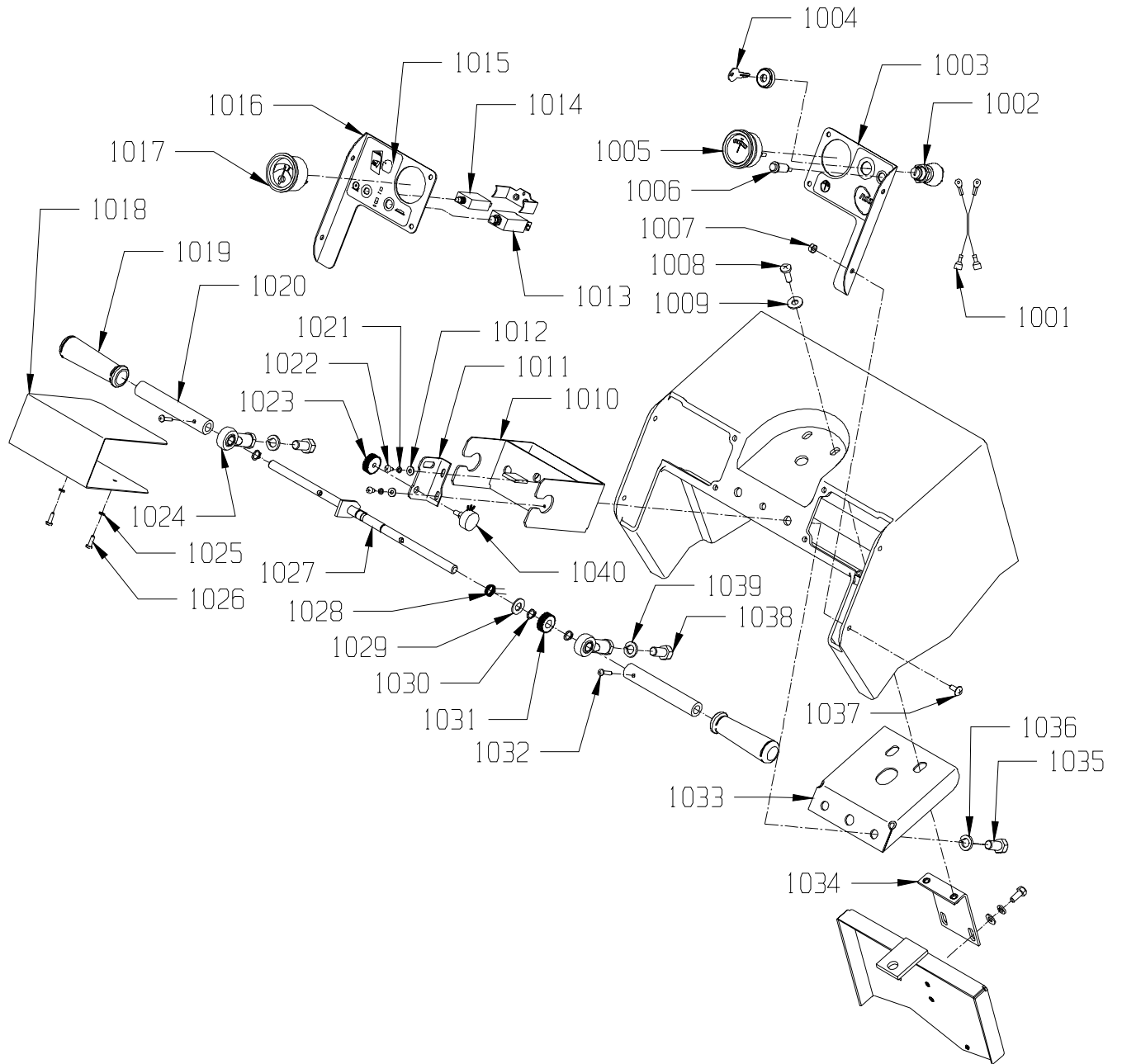
ITEM	PART NO.	DESCRIPTION	QTY.
901	9120317	5/32 X 5/8 DOME HEAD POP RIVET - STEEL	8
902	9120185	5/32 I.D. X 1/2 O.D. WASHER - STEEL - ZINC PLATE	8
903	6492261	RUBBER MOTOR COVER	1
904	6495851	BATTERY WARNING DECAL OBC	1
905	9120900	1/4-20 HEX NUT WITH NY-LOK INSERT	4
906	9120930	9/32 I.D. X 5/8 O.D. X .051/.080 THICK SAE FLAT WASHER (1/4)	4
907	6491171	SOFT DRAW LATCH WITH CONCEALED KEEPER	2
908	9121400	3/8 I.D. X 7/8 O.D. X .064/.104 THICK WROUGHT WASHER (5/16)	2
909	9121480	5/16-18 X 1 ROUND HEAD PHILLIPS MACHINE SCREW	2
910	4490521	LOAD ADJUST KNOB (INCLUDES SET SCREW)	1
911	6495191	CONTROL PANEL DECAL KIT	1
912	6495181	CONTROL PANEL - LEFT	1
913	9120900	1/4-20 HEX NUT WITH NY-LOK INSERT	4
914	6495171	CONTROL PANEL - RIGHT	1
915	6493071	IDENTIFIER DECAL CHARGER 2020 DB	1
916	9121000	1/4-20 X 5/8 TRUSS HEAD PHILLIPS MACHINE SCREW	4
917	2397361	HOUR METER (OPTIONAL)	1
918	9120790	10 X 5/8 PAN HEAD PHILLIPS SHEET METAL SCREW	8
919	6495813	UPPER REAR PANEL	1
920	4990321	FUSE HOLDER WITH NUT AND WASHER	1
921	6495741	3AG FAST-ACTING FUSE 4AMP	1
922	6495201	REAR PANEL DECAL	1
923	6495823	LOWER REAR PANEL	1
924	4890451	BUSHING, SNAP, #SB87511 HEYCO	1
925	6495691	36 VOLT ONBOARD CHARGER 120/240 VOLT 21AMP	1
926	9121020	1/4-20 X 1 TRUSS HEAD PHILLIPS MACHINE SCREW	1
927	9120085	M3.5 X 19 PAN HEAD PHILLIPS MACHINE SCREW	2
928	2491283	CORD WRAP	1
929	9121000	1/4-20 X 5/8 TRUSS HEAD PHILLIPS MACHINE SCREW	3
930	9120880	1/4 SPLIT LOCK WASHER	4
931	9120930	9/32 I.D. X 5/8 O.D. X .051/.080 THICK FLAT WASHER (1/4)	4
932	9121550	5/16 DIA. X 3/8 LONG SOCKET HEAD SHOULDER BOLT 1/4-20	2
933	9120890	1/4-20 HEX NUT WITH NY-LOK INSERT - THIN	2
934	6495831	HINGE PLATE	2
935	4890851	CABLE CLAMP, #COV-090 KMC	1
936	9120910	1/4-20 HEX NUT WITH STAR LOCK WASHER	1
937	6495751	WIRING DECAL - DB WITH ONBOARD CHARGER	1
938	6490951	1/4 MPT PLUG	2
939	6495711	240 VOLT ONBOARD CHARGER CORD - SHUKO	1
940	6495081	HOUSING WITH SLIDE RAILS - INCLUDES:	1
940A	6495441	SLIDE RAIL, LEFT	1
940B	9120920	1/4-20 HEX NUT	4
940C	9121039	1/4-20 X 1 1/2 ELEVATOR BOLT - ZINC PLATED	4
940D	9120900	1/4-20 HEX NUT WITH NY-LOK INSERT	6
940E	9120930	9/32 I.D. X 5/8 O.D. X .051/.080 THICK (1/4) SAE FLAT WASHER	6
940F	9121362	1/4-20 X 2 1/2 FULL THREADED STUD	2
940G	9120923	1/4-20 X 7/8 LONG HEX COUPLING NUT	2
940H	6495431	SLIDE RAIL, RIGHT	1
940I	9121037	1/4-20 X 5/8 FLAT HEAD PHILLIPS MACHINE SCREW	6
941	6495791	ENGLISH / SPANISH OPERATION DECAL	1
942	6493061	SIDE DECAL 3.5 X 26	2
943	6491211	TAPPING PLATE	2
944	3392561	VAC EXHAUST HOSE	1
945	6491191	HOOD STOP / SUPPORT BRACKET	2
946	9120930	9/32 I.D. X 5/8 O.D. X .051/.080 THICK (1/4) SAE FLAT WASHER	4
947	9120880	1/4 SPLIT LOCK WASHER	4
948	9121270	1/4-20 X 1 HEX BOLT	4
949	4495531	END CUFF - 2"	1
950	5796101	PAPER BAG - 5 PACK	1
	6592801	CLOTH FILTER BAG (OPTIONAL)	1
951	6492871	HOOD DECAL	1

HOUSING - DB



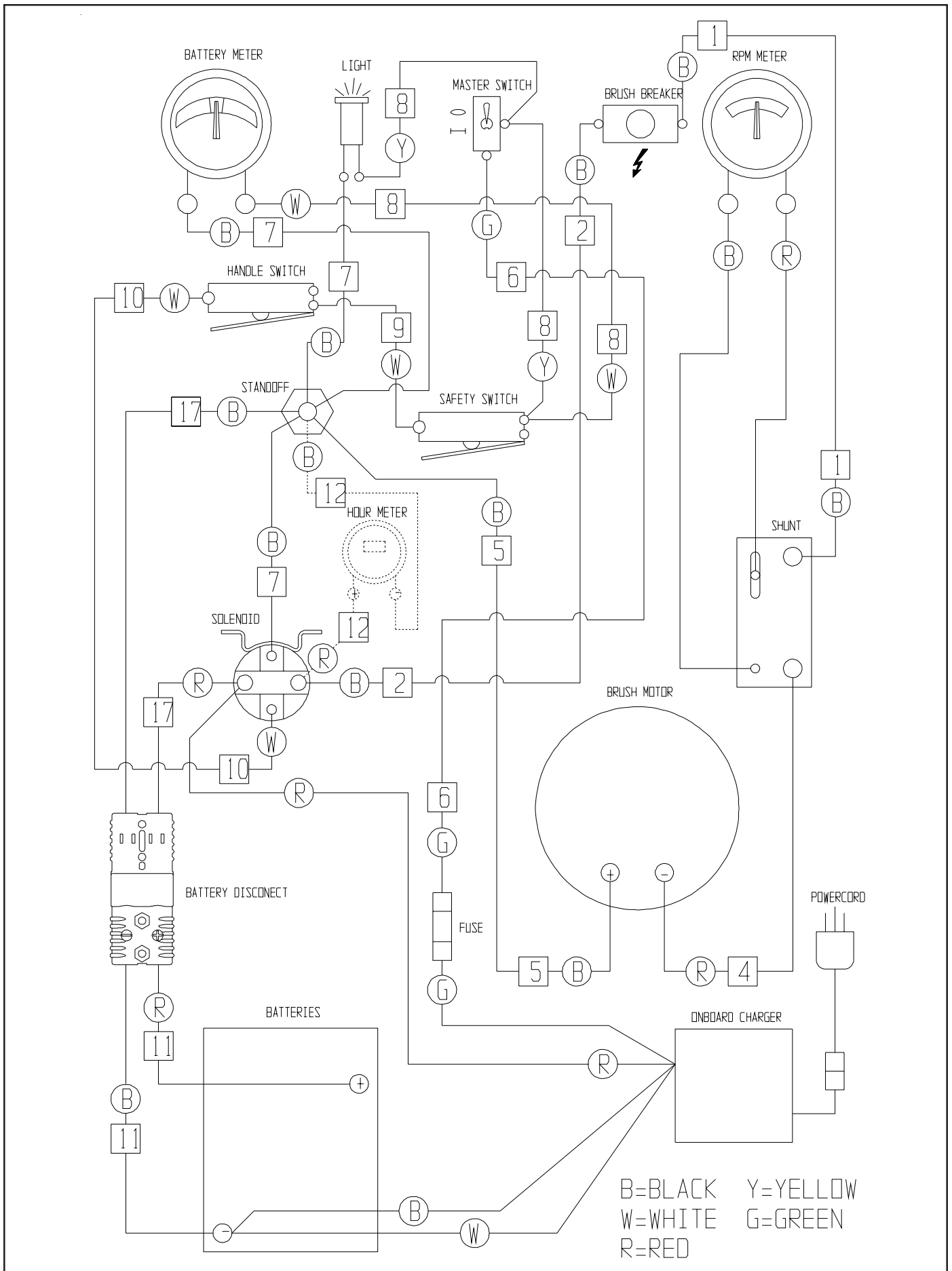
<u>ITEM</u>	<u>PART NO.</u>	<u>DESCRIPTION</u>	<u>QTY.</u>
1001	6495571	WIRE ASSEMBLY - KEY SWITCH ADAPTOR	1
1002	2795711	KEY SWITCH & KEY	1
1003	6495161	KEY SWITCH CONTROL PANEL - RIGHT	1
1004	2796131	REPLACEMENT KEY	1
1005	4491041	RPM METER WITH HARDWARE	1
1006	2691981	LIGHT - INDICATOR, GREEN, 36 VOLT, WITH CLIP	1
1007	9120900	1/4-20 HEX NUT WITH NY-LOK INSERT	8
1008	9121480	5/16-18 X 1 ROUND HEAD PHILLIPS MACHINE SCREW	2
1009	9121400	3/8 I.D. X 7/8 O.D. X .064/.104 THICK WROUGHT WASHER (5/16)	2
1010	6495021	HANDLE BOX - TWISTED GRIP	1
1011	6495051	POTENTIOMETER MOUNTING BRACKET	1
1012	9120370	7/32 I.D. X 1/2 O.D. X .032/.065 THICK FLAT WASHER (#10)	2
1013	4490701	CIRCUIT BREAKER - 70 AMP/ETA	1
1014	2392201	CIRCUIT BREAKER, 115 VOLT 10 AMP	1
1015	6495191	CONTROL PANEL DECAL KIT	1
1016	6495181	CONTROL PANEL - LEFT	1
1017	4491051	BATTERY METER WITH HARDWARE	1
1018	6495033	HANDLE BOX COVER	1
1019	3392901	HANDLE GRIP	2
1020	2691871	HANDLE GRIP BASE	2
1021	9120320	10 SPLIT LOCK WASHER	2
1022	9120410	10-24 X 1/2 ROUND HEAD PHILLIPS MACHINE SCREW	2
1023	2691941	DRIVEN GEAR, POTENTIOMETER	1
	9120170	8-32 X 3/16 SET SCREW - KNURL POINT - STEEL	2
1024	2391941	BALL JOINT	2
1025	9120320	10 SPLIT LOCK WASHER	2
1026	9120410	10-24 X 1/2 ROUND HEAD PHILLIPS MACHINE SCREW	2
1027	6495011	HANDLE BAR	1
1028	3392661	TORSION SPRING	1
1029	9122450	17/32 I.D. X 1 1/16 O.D. X .074/.121 THICK FLAT WASHER (1/2)	1
1030	5091701	RETAINING RING	3
1031	2691931	DRIVE GEAR, HANDLE BAR	1
	9120170	8-32 X 3/16 SET SCREW - KNURL POINT - STEEL	2
1032	9120270	8-32 X 7/8 ROUND HEAD PHILLIPS MACHINE SCREW	2
1033	6495041	HANDLE BOX MOUNTING PLATE	1
1034	4492803	TOP SUPPORT BRACKET	1
1035	9122700	1/2-20 X 1 HEX BOLT	2
1036	9122420	1/2 SPLIT LOCK WASHER	2
1037	9121000	1/4-20 X 5/8 TRUSS HEAD PHILLIPS MACHINE SCREW	8
1038	9122530	1/2-13 X 1 HEX BOLT	2
1039	9122420	1/2 SPLIT LOCK WASHER	2
1040	2694131	POTENTIOMETER, CURTIS SPEED CONTROL	1

CONTROL PANEL - DB



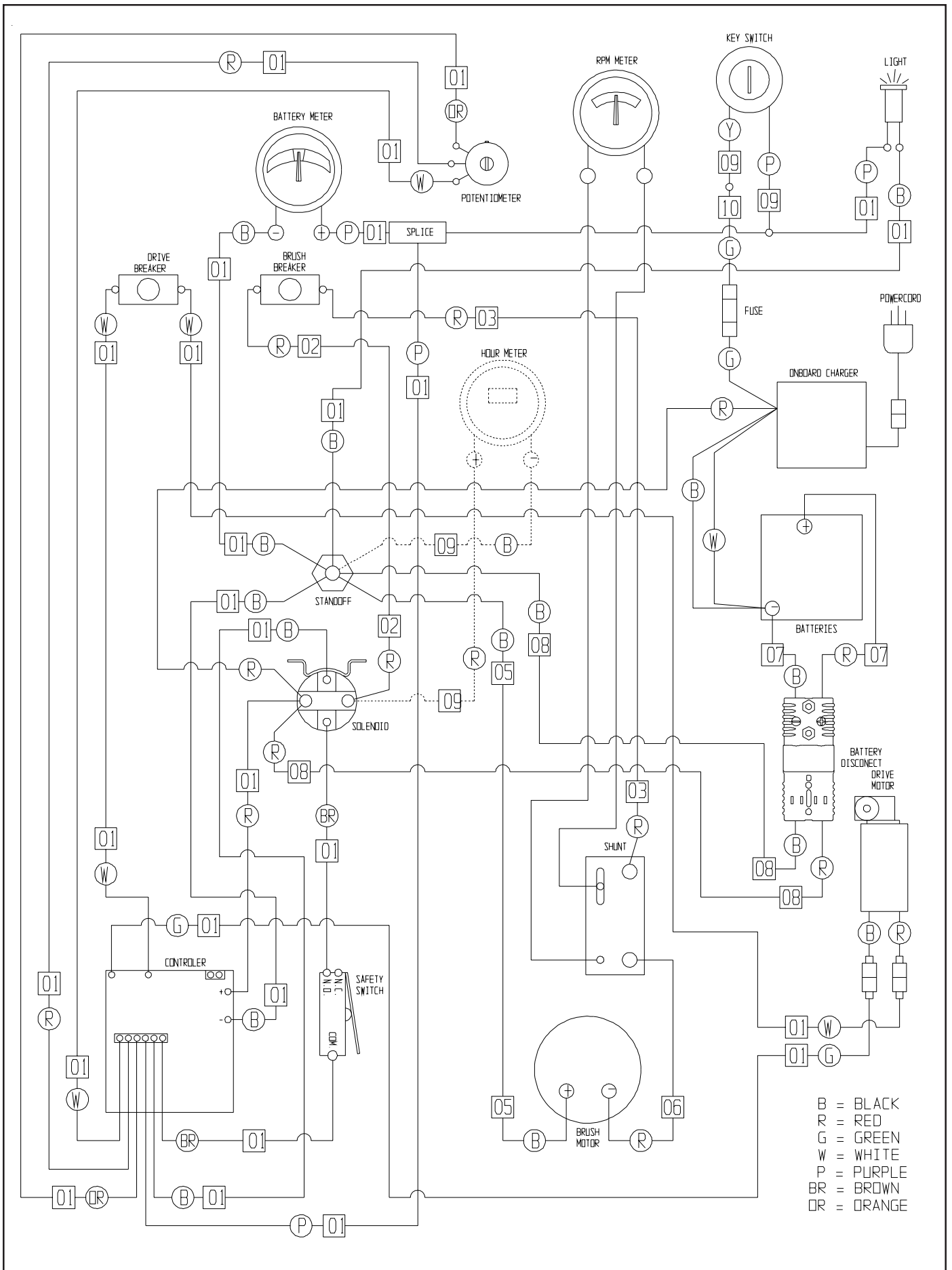
<u>ITEM</u>	<u>PART NO.</u>	<u>DESCRIPTION</u>	<u>QTY.</u>
1	6490801	WIRE ASSEMBLY, BREAKER TO SHUNT	1
2	6490811	WIRE ASSEMBLY, SOLENOID TO BREAKER	1
4	6495121	WIRE ASSEMBLY, SHUNT TO MOTOR	1
5	6495131	WIRE ASSEMBLY, MOTOR TO STANDOFF	1
6	6495721	WIRE ASSEMBLY, FUSE TO SWITCH	1
7	6490861	WIRE ASSEMBLY, SOLENOID / LIGHT / VOLT METER TO STANDOFF	1
8	6490871	WIRE ASSEMBLY, SAFETY SWITCH TO VOLT METER / SWITCH TO LIGHT	1
9	6490881	WIRE ASSEMBLY, HANDLE SWITCH TO SAFETY SWITCH	1
10	6490891	WIRE ASSEMBLY, SOLENOID TO HANDLE SWITCH	1
11	7691661	WIRE ASSEMBLY, ANDERSON - POS./NEG. BATTERY 36 VOLT	1
17	6491831	WIRE ASSEMBLY, ANDERSON TO SOLENOID / STANDOFF	1
97	2391981	BATTERY JUMPER 3/8" RING #97	2
—	2397361	HOUR METER - OPTIONAL	1
—	2691981	INDICATOR LIGHT - GREEN LENS / 35 VOLT WITH CLIP	1
—	4490561	INSULATED STANDOFF	1
—	4490701	CIRCUIT BREAKER - 70 AMP/ETA	1
—	4491011	SOLENOID, 36 VOLT	1
—	4491031	SHUNT	1
—	4491041	RPM METER WITH HARDWARE	1
—	4491051	BATTERY METER 36 VOLT WITH HARDWARE	1
—	4491061	BATTERY, 185 AMP/HR, 12 VOLT	3
—	4491071	SNAP SWITCH	2
—	4491101	TOGGLE SWITCH, MOTOR	1
—	4990321	FUSE HOLDER WITH NUT & WASHER	1
—	6491841	175 AMP ANDERSON WITH CONTACTS GRAY 36 VOLT	2
—	6493511	MOTOR 2000 RPM, 37V - IMPERIAL	1
—	6495621	HOUR METER LEADS - OPTIONAL	1
—	6495691	36V ONBOARD CHARGER 120/240V 21AMP	1
—	6495701	120V ONBOARD CHARGER CORD	1
—	6495711	240V ONBOARD CHARGER CORD - SHUKO	1
—	6495741	3AG FAST-ACTING FUSE 4AMP	1
—	9123005	1/8 X 5 1/2 WIRE TIE	6

WIRING DIAGRAM - AB

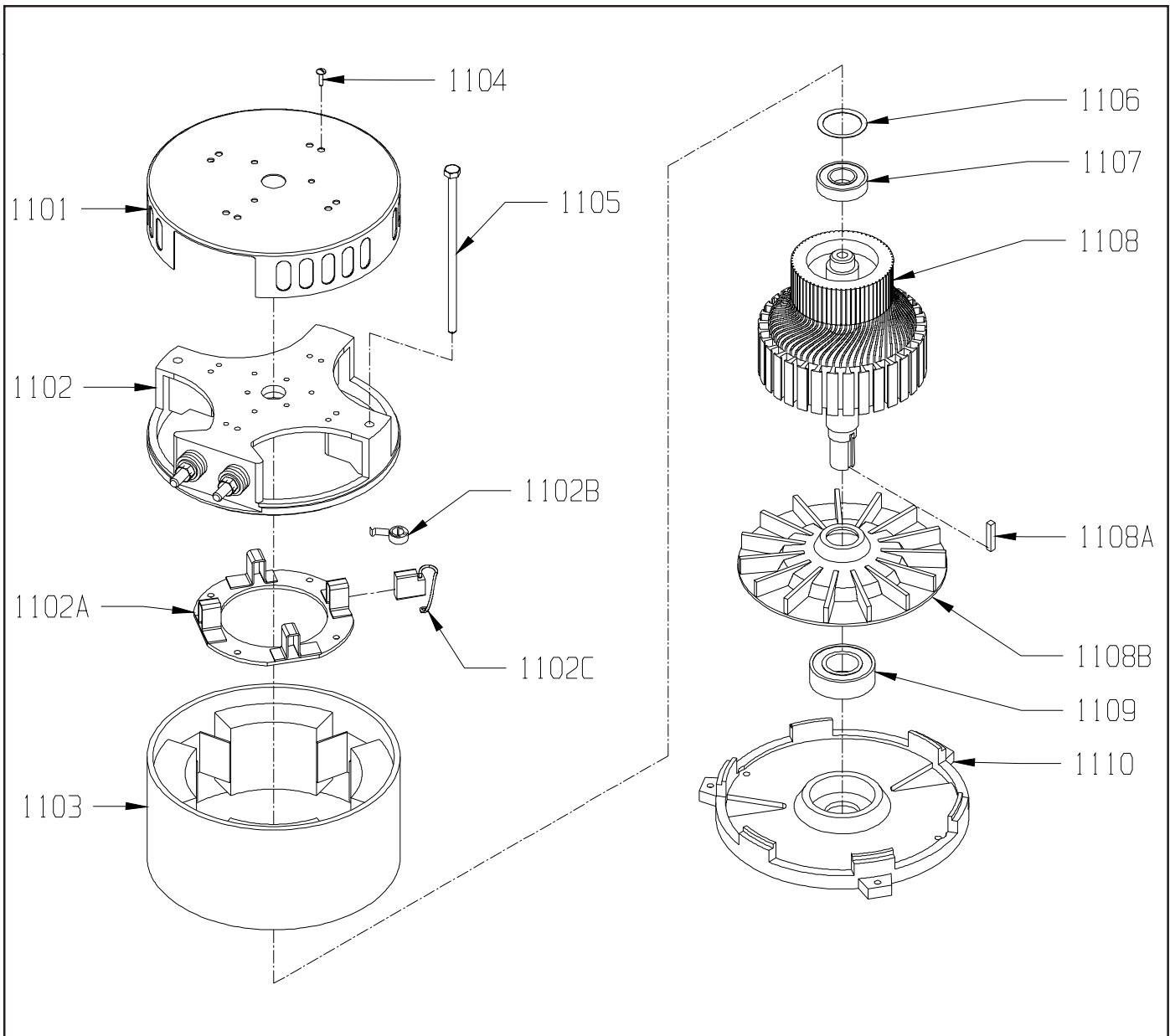


<u>ITEM</u>	<u>PART NO.</u>	<u>DESCRIPTION</u>	<u>QTY.</u>
1	6495321	WIRE HARNESS	1
2	6495331	WIRE ASSEMBLY, SOLENOID TO BRUSH BREAKER	1
3	6495341	WIRE ASSEMBLY, BRUSH BREAKER TO SHUNT	1
5	6495131	WIRE ASSEMBLY, MOTOR TO STANDOFF	1
6	6495121	WIRE ASSEMBLY, SHUNT TO MOTOR	1
7	7691661	WIRE ASSEMBLY, ANDERSON - POS./NEG. BATTERY 36 VOLT	1
8	6491831	WIRE ASSEMBLY, ANDERSON - SOLENOID / STANDOFF 36 VOLT	1
9	6495571	WIRE ASSEMBLY - KEY SWITCH ADAPTOR	1
10	6495721	WIRE ASSEMBLY, FUSE TO SWITCH	1
97	2391981	BATTERY JUMPER 3/8" RING #97	2
—	2392201	CIRCUIT BREAKER, 115 VOLT 10 AMP (DRIVE)	1
—	2397361	HOUR METER - OPTIONAL	1
—	2690021	SPEED CONTROL, CURTIS	1
—	2691981	INDICATOR LIGHT - GREEN LENS, 36 VOLT WITH CLIP	1
—	2694131	POTENTIOMETER, CURTIS CONTROL	1
—	2795711	KEY SWITCH & KEY	1
—	4490561	INSULATED STANDOFF	1
—	4490701	CIRCUIT BREAKER - 70 AMP/ETA (BRUSH)	1
—	4491011	SOLENOID, 36 VOLT	1
—	4491031	SHUNT	1
—	4491041	RPM METER WITH HARDWARE	1
—	4491051	BATTERY METER WITH HARDWARE	1
—	4491061	BATTERY, 205 AMP/HR, 12 VOLT	3
—	4491071	SNAP SWITCH (SAFETY)	1
—	4990321	FUSE HOLDER WITH NUT AND WASHER	1
—	6491841	175 AMP ANDERSON WITH CONTACTS GRAY 36 VOLT	2
—	6493511	MOTOR 2000 RPM, 36V - IMPERIAL	1
—	6495291	DRIVE MOTOR 36 VOLT	1
—	6495621	HOUR METER LEADS - OPTIONAL	1
—	6495691	36V ONBOARD CHARGER 120/240V 21AMP	1
—	6495701	120V ONBOARD CHARGER CORD	1
—	6495711	240V ONBOARD CHARGER CORD - SHUKO	1
—	6495741	3AG FAST-ACTING FUSE 4AMP	1
—	9123005	1/8 X 5 1/2 WIRE TIE	5

WIRING DIAGRAM - DB



MOTOR



<u>ITEM</u>	<u>PART NO.</u>	<u>DESCRIPTION</u>	<u>QTY.</u>
	6493511	MOTOR 2000 RPM, 36 VOLT - INCLUDES:	1
1101	5991731	COMMUTATOR BRACKET COVER	1
	6493531	COMMUTATOR BRACKET ASSEMBLY - INCLUDES:	1
1102	6493541	COMMUTATOR BRACKET	1
1102A	6493601	BRUSH BOARD ASSEMBLY - INCLUDES:	1
1102B	6493591	SPRING	2
1102C	7692041	CARBON BRUSH	2
1103	5991521	STATOR FRAME ASSEMBLY - WITH CLIPS AND MAGNETS	1
1104	9120600	10-24 X 1/2 PAN HEAD PHILLIPS THREAD CUTTING SCREW	4
1105	5991701	THRU BOLT	2
1106	5991741	HELICAL WASHER - LARGE	1
1107	5991551	BEARING - TOP END	1
1108	6493581	ARMATURE - 2000 RPM - INCLUDES:	1
1108A	9120827	3/16 SQUARE X 1 LONG KEY - STEEL	1
1108B	6493571	ALUMINUM FAN	1
1109	5991541	BEARING - BOTTOM END	1
1110	6493551	BEARING END BRACKET	1

BLANK



NSS ® Enterprises, Inc.

3115 Frenchmens Road, Toledo, Ohio 43607
PHONE (419) 531-2121 FAX (419) 531-3761
NSS ® Enterprises, Inc. European Distribution Centre
Unit II, Pinfold Trading Estate * 55 Nottingham Road
STAPLEFORD, NOTTINGHAM NG9 8AD ENGLAND U.K.
PHONE: (44) 0115 939 1568 * FAX: (44) 0115 949 0615