



Electronic Service Manuals

This electronic document is provided as a service to our customers. We do not create the contents of the information contained in this document. Should you have detailed questions pertaining to the information contained in this document, you may contact Michco, or the manufacturer which provided the original information in this electronic deliverable. Michco's only part in this electronic deliverable was the electronic assembly process. By providing this manual on line we are not guaranteeing parts availability.

You may contact Michco through the following methods:

Phone (517) 484-9312 or (800) 331-3339

2011 N. High St. -- Lansing, Michigan -- 48906

Fax: (517) 484-9836

Email: CustServe@Michco.com

Web site: www.Michco.Com

Parts Web site: www.FloorMachineParts.Com

Order Parts on Line at:

www.FloorMachineParts.Com

Directly to Parts & Service:

By Email: **Shop@Michco.com**

By Fax: (517) 702-2041

By Voice: Use numbers above.

Serving the Cleaning Industry Since 1922

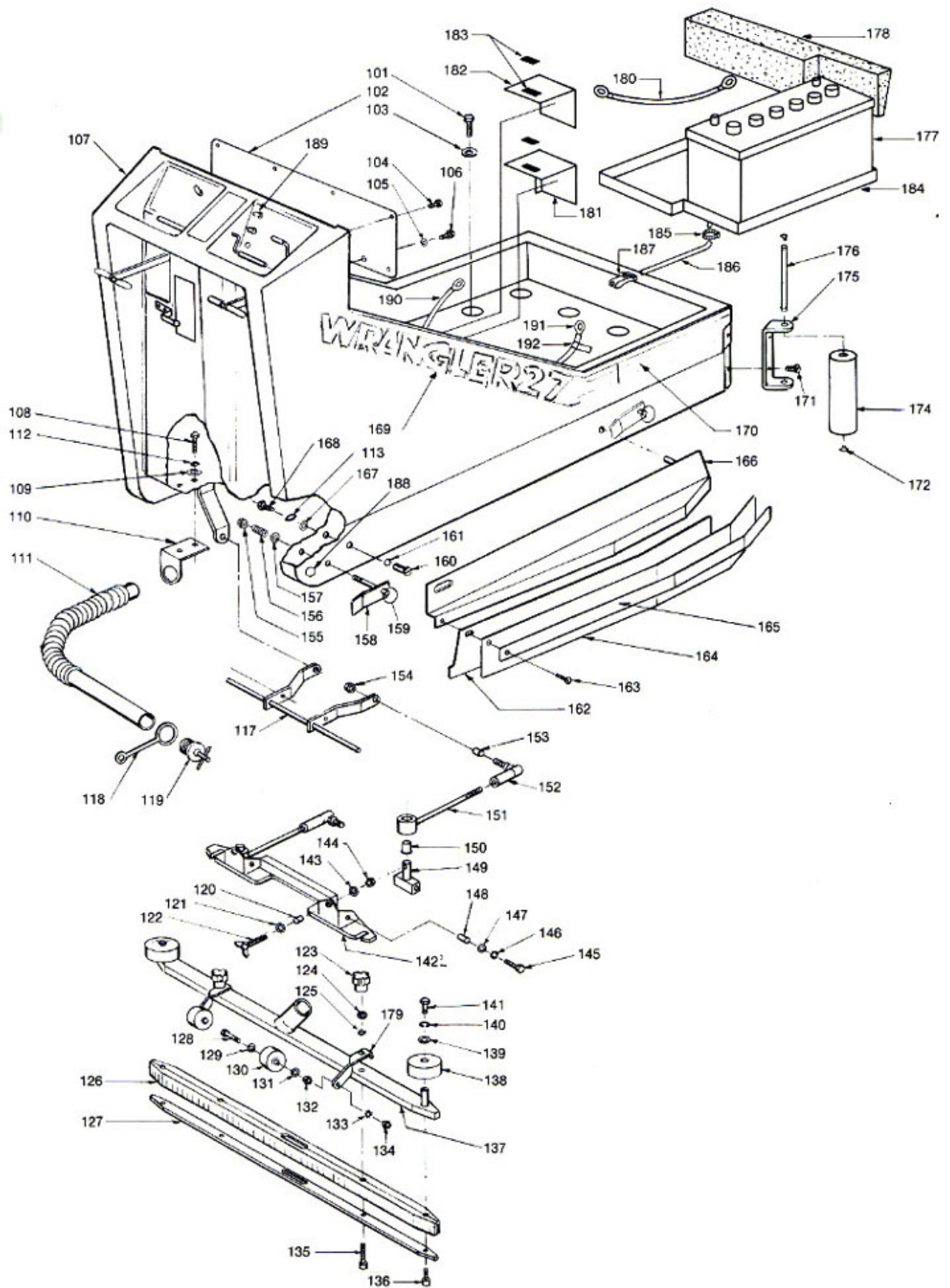
Notice: All copyrighted material remains property of original owners, all trademarks are property of respective owners. Manuals are subject to Manufacturer's reproduction limitations. Originals or reproductions were provided by manufacturers through a request. We make no warranty as to the correctness of information provided in this document and you assume all risk. By placing these manuals on line we are not declaring our corporation to be an manufacturer authorized dealer or provider, please check our web site for authorized manufacturers we represent.

Wrangler 27, Drawing #1

Item No.	Part No.	Part Name	Qty. Req'd.	Item No.	Part No.	Part Name	Qty. Req'd.
101		3/8-16 x 1 Hex Bolt	7	157		1/2 Flat Washer	4
102	27-9-086-3	Switch Panel	1	158	27-9-052-1	Latch	4
103		3/8 Fender Washer (1 1/2 o.d.)	7	159	10-9-980-1	Key Ring	4
104		#10 x 3/8 Pan Hd. Philips Type 25	6	160	27-9-057-6	Rear Skirt Pin	2
105		5/16 Flat Washer	3	161	50-9-170-1	Retaining Ring	2
106		5/16-18 x 3/4 Hex Bolt	3	162	27-9-067-1	Urethane Side Wiper	2
107	27-9-001-1	Chassis Housing	1	163		10-24 x 3/8 Round Hd. Philips Screw	16
108		1/4-20 x 3/8 Hex Bolt	2	164	27-9-058-1	Splash Guard	2
109		1/4 Flat Washer	2	165	27-9-059-1	Retainer Strap	2
110	27-9-180-6	Drain Hose Bracket	1	166	27-9-050-3	Left Skirt Only	1
111	27-9-187-1	Drain Hose, Recovery Tank	1	166	27-9-051-3	Right Skirt Only	1
112		1/4 Lock Washer	2	167		1/4 Flat Washer 3/4 OD	2
113		1/4 Lock Washer	2	168		1/4-20 x 1 1/4 Hex Bolt	2
117	27-9-113-6	Squeegee Lift Bracket	1	169	27-9-198-1	Left Wrangler Label	1
118	27-9-188-1	Plug Strap	1	169	27-9-199-1	Right Wrangler Label	1
119	27-9-562-1	Drain Plug, Recovery Tank	1	170	27-9-200-1	Front Body Stripe	5.5 ft
120	27-9-128-6	Bushing Spacer	2	171		3/8-16 x 3/4 Flat Head Screw	4
121		1/4 Flat Washer (SAE)	2	172	50-9-170-1	Retaining Ring	4
122	27-9-590-1	1/4-20 x 1 3/4 Thumbscrew, S/S	2	174	27-9-024-1	Bumper Roller	2
123	27-9-100-2	Squeegee Knob	2	175	27-9-565-3	Bumper Roller Bracket	2
124		5/16-18 Hex Nut	2	176	27-9-566-6	Bumper Roller Axle	2
125		5/16 Ext. Star Lock Washer	2	177	44-9-106-1	12 Volt Battery	3
126	27-9-106-1	Squeegee Blade	1	178	27-9-182-1	Battery Block	1
127	27-9-105-3	Inner Channel	1	179	27-9-099-6	Squeegee Roller Bracket	2
128		5/16-18 x 2 Hex Bolt	2	180	23-9-198-1	Battery Jumper Cable w/Ring Term.	2
129		5/16 Flat Washer	2	181	27-9-582-1	Right Brush Motor Shield	1
130	30-9-674-1	Wheel	2	182	27-9-583-1	Left Brush Motor Shield	1
131		5/16 Flat Washer	2	183	99-9-755-0	Velcro Hook	.5 ft.
132		5/16-18 Hex Nut	2		99-9-756-0	Velcro Loop	.5 ft.
133		5/16 Ext. Star Lock Washer	2	184	27-9-563-9	Battery Tray Ass'y.	1
134		5/16-18 Hex Nut	2	185	36-9-018-1	Hose Clamp	1
135		5/16-18 x 1 1/2 Socket Cap Screw - S/S	2	186	87-9-115-0	Battery Tray Drain Tube	.8 ft.
136		5/16-18 x 3/4 Socket Cap Screw - S/S	2	187	33-9-066-1	Drain Tube Control Valve	1
137	27-9-101-3	Squeegee Housing	1	188	06-9-076-1	Plug Button	1
138	27-9-028-1	Bumper Wheel	2	189	06-9-314-1	Rubber Switch Boot	1
139		5/16 Flat Washer	2	190	27-9-615-1	Negative Battery Cable, Black	1
140		5/16 Lock Washer	2	191	27-9-616-1	Positive Battery Cable, Red	1
141		5/16-18 x 1/2 Hex Bolt	2	192	23-9-276-1	Battery Terminal Warning Label	1
142	27-9-125-6	Squeegee Mount	1				
143		1/4 Flat Washer (SAE)	2	ASSEMBLIES			
144		1/4-20 Jam Nut	2	137	27-9-259-9	Squeegee Assembly	1
145		1/4-20 x 3/4 Hex Bolt	4	166	27-9-050-9	Left Skirt Assembly	1
146		1/4 Lock Washer	4	166	27-9-051-9	Right Skirt Assembly	1
147		1/4 Flat Washer	4				
148	27-9-128-6	Bushing Spacer	4				
149	27-9-130-1	Pivot Block	2				
150	27-9-137-1	Flange Bearing	2				
151	27-9-134-9	Pivot Arm Ass'y. w/Bearing	2				
152	27-9-138-1	Ball Joint	2				
153	27-9-075-6	Bushing Spacer	2				
154		1/2-20 Hex Nut	2				
155	27-9-556-1	1/2-13 Hex Lock Nut, Thin	4				
156	27-9-056-1	Latch Spring	4				

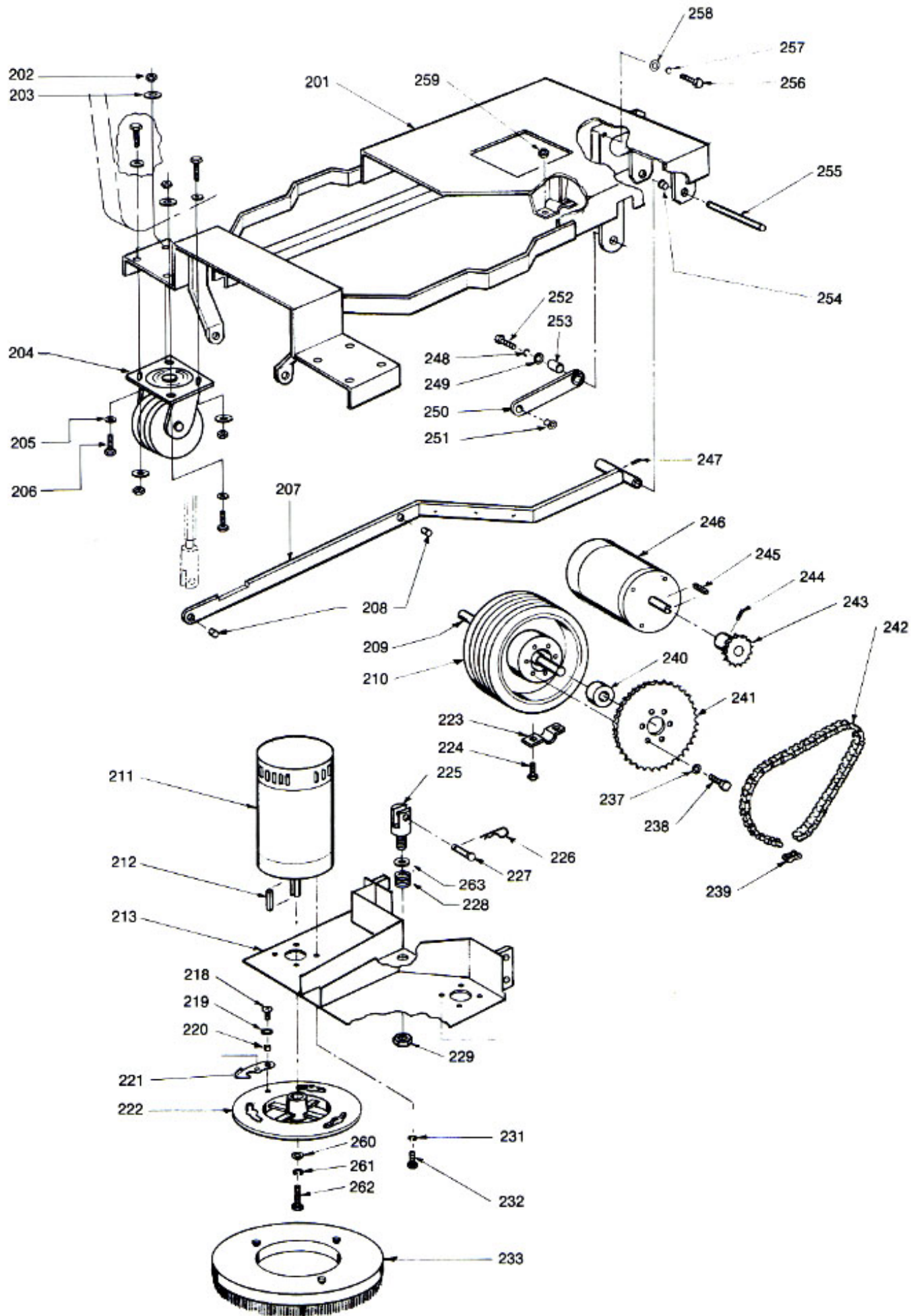
(Note: Item #137 includes the following Item Numbers: 123, 124, 125, 126, 127, 128, 129, 130, 131, 132, 133, 134, 135, 136, 137, 138, 139, 140, 141 and 179).

(Note: Item #166 includes the following Item Numbers: #162, 163, 164, 165 and 166).



Wrangler 27, Drawing #2

Item No.	Part No.	Part Name	Qty. Req'd.	Item No.	Part No.	Part Name	Qty. Req'd.
201	27-9-035-3	Base Plate	1	27-9-570-1	Replacement Face w/Foam Cushion, 12½ Diam.	1	
202	-----	¾-16 Hex Nut	8	27-9-597-1	Replacement Face w/Foam Cushion, 13½ Diam.	1	
203	-----	¾ Flat Washer	8	27-9-569-1	Drive Lugs w/Mount Screws (pkg of 3)	1	
204	44-9-050-1	Caster	2	52-9-768-1	Pad Holding Cup, Male (center lock)	1	
	44-9-039-1	Caster Wheel Only, w/bearing		52-9-769-1	Pad Holding Base, Female (center lock base)	1	
205	-----	¾ Flat Washer	8	27-9-568-1	Mounting Screws For Base (pkg. of 3)	1	
206	-----	¾-16 x 1¼ Hex Bolt, S/S	8	237	-----	5/16 Lock Washer	6
207	27-9-070-3	Lift Arm	1	238	-----	5/16-18 x 1 Hex Bolt, S/S	6
208	27-9-075-6	Bushing Spacer	2	239	27-9-521-1	Master Link	1
209	27-9-030-2	Drive Wheel Axle	1	240	27-9-031-1	Ball Bearing	2
210	27-9-007-1	Drive Wheel, 10"	1	241	27-9-033-6	Wheel Sprocket	1
	27-9-007-9	Drive Wheel Ass'y, incl, #209, 210, 240		242	27-9-034-1	Chain, Includes #239	1
211	27-9-008-1	Brush Motor	2	243	27-9-032-6	Motor Sprocket Includes Set Screws	1
212	27-9-268-1	Motor Key ¼ x ¼ x 1	1	244	-----	5/16-18 x ¾ Set Screw	2
218	-----	¼-20 x ½ Truss Hd. Phillips Screw	2	245	27-9-268-1	Motor Key ¼ x ¼ x 1	1
219	44-9-062-1	¾ Spring Washer	2	246	27-9-010-1	Drive Motor	1
220	27-9-128-6	Bushing Spacer	2	247	-----	5/16-18 x ¾ Set Screw	1
221	27-9-021-6	Brush Plate Latch	2	248	-----	½ Lock Washer	8
222	27-9-020-2	Drive Plate Only	2	249	-----	½ Flat Washer	8
	27-9-248-9	Right Brush Drive Ass'y.	1	250	27-9-074-9	Lift Arm Ass'y. w/Flange Bearing	4
	27-9-249-9	Left Brush Drive Ass'y.	1	251	27-9-076-1	Flange Bearing	8
223	27-9-043-3	Axle Clamp	2	252	27-9-046-1	½-13 x 1¼ Hex Bolt	8
224	-----	¾-16 x 1 Hex Bolt, S/S	4	253	27-9-075-6	Bushing Spacer	8
225	27-9-090-6	Clevis	1	254	27-9-076-1	Flange Bearing	2
226	27-9-097-1	Hair Spring Cotter Pin	1	255	27-9-073-6	Lift Arm Pin	1
227	27-9-096-1	Clevis Pin ½ x 1½	1	256	-----	¼-20 x 1 Hex Bolt, S/S	4
228	27-9-595-1	Brush Pressure Spring	1	257	-----	¼ Lock Washer	4
229	-----	¾-11 Hex Lock Nut	1	258	-----	¼ Flat Washer	4
231	-----	¼ Split Lock Washer, S/S	8	259	-----	¾-16 Hex Lock Nut	4
232	-----	¼-20 x 1 Hex Bolt, S/S	8	260	-----	5/16 Flat Washer	2
233	27-9-250-1	Bassine Brush	2	261	-----	5/16 Ext. Star Lock Washer	2
	27-9-251-1	Nylon Brush	2	262	-----	5/16-18 x ¾ Hex Bolt	2
	27-9-253-1	Wire Brush	2	263	27-9-596-1	Brush Pressure Washer	1
	27-9-252-1	Nylo Grit Brush	2				
	27-9-254-1	Foam Block Pad Driver w/bristles	2				
	27-9-523-1	Replacement (Pad Holding) Split Ring Only for 27-9-254-1	2				
	27-9-524-1	Replacement Pad Holder, Includes Screws for 27-9-254-1	2				
	27-9-255-1	Easy Change Pad Driver	2				

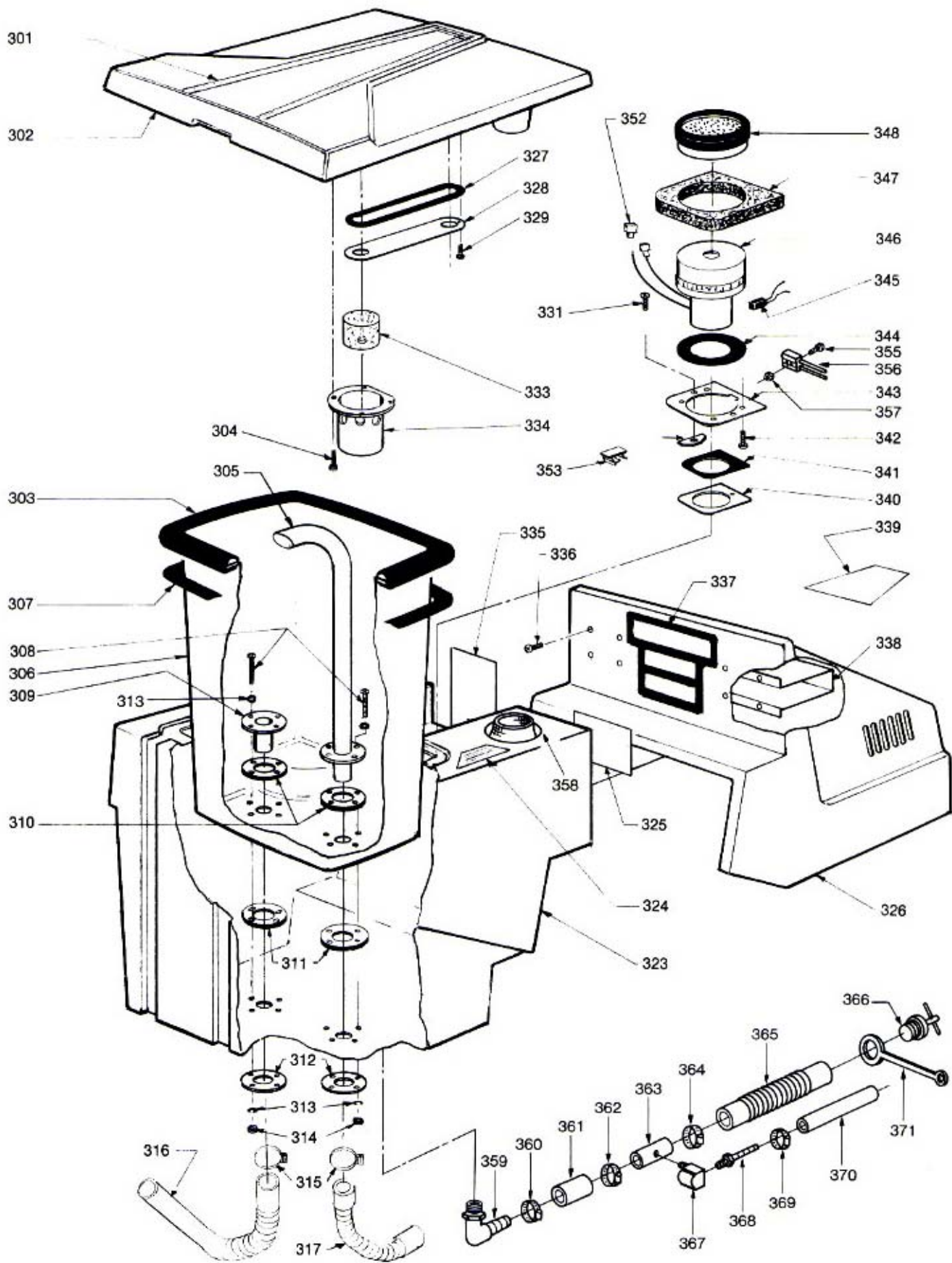


Wrangler 27, Drawing #3

Wrangler 27 300 Series Effective S/N 35H50855

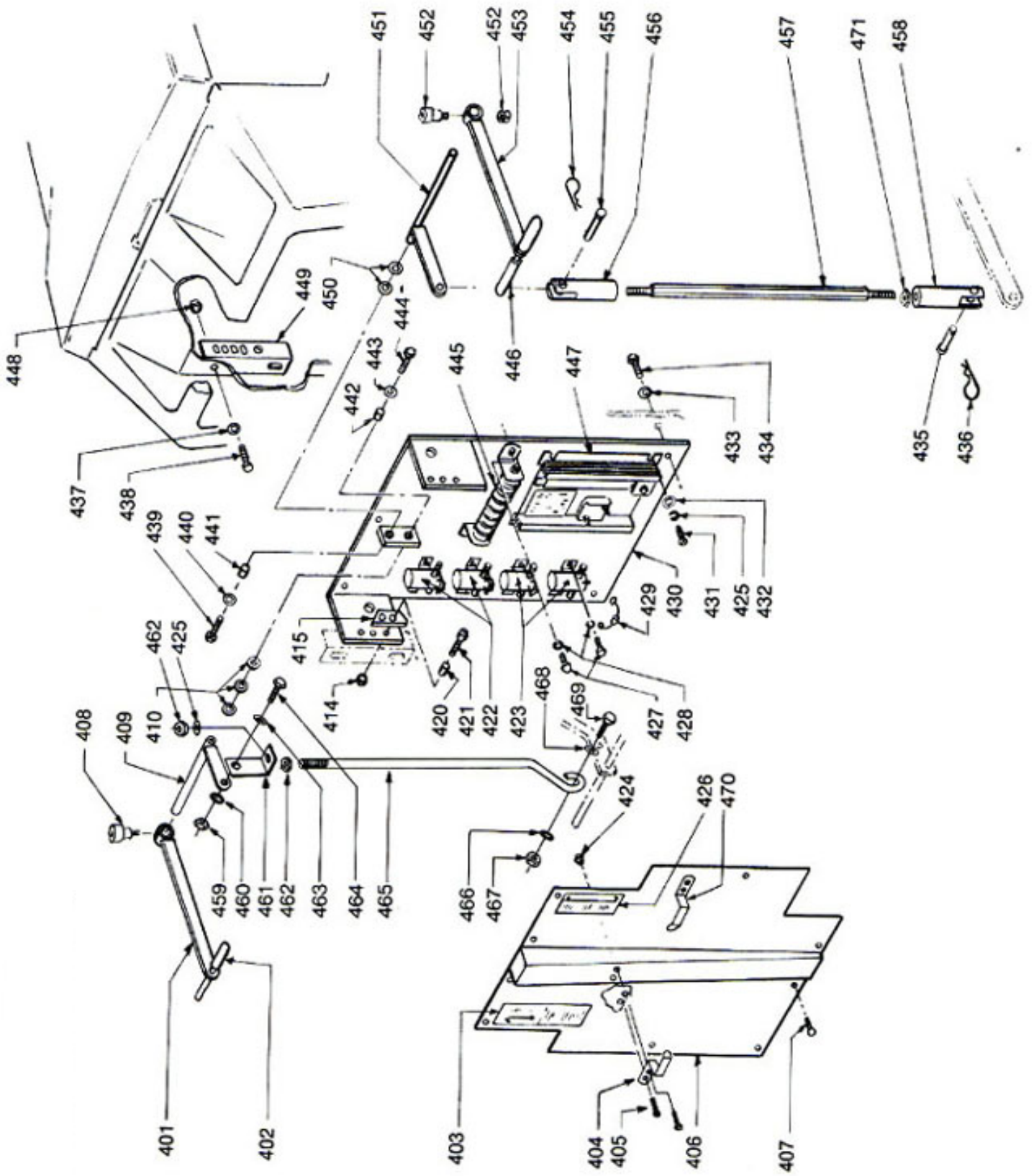
Item No.	Part No.	Part Name	Qty. Req'd.	Item No.	Part No.	Part Name	Qty. Req'd.
301	27-9-195-1	Vacuum Cover Label	1	303	27-9-577-1	Extruded Tank Gasket	1
302	27-9-005-1	Top Cover	1	318-322	-----	Obsolete	
*303	88-9-110-0	Gasket	64"	330	-----	Obsolete	
304	-----	¼-20 x ¾ Truss Hd. Philips Screw	4	332	-----	Obsolete	
305	27-9-175-3	Inlet Tube	1	348	27-9-575-9	Vac Filter w/Extruded Gasket	1
306	27-9-004-1	Recovery Tank	1	32-9-112-1		Vac Filter Only	
307	88-9-114-0	Gasket	8 ft.	27-9-575-1		Extruded Gasket Only	
308	-----	¼-20 x 2 Rd. Head Philips Screw, S/S	8	349-351	-----	Obsolete	
309	27-9-173-3	Drain Tube	1	355	-----	6-32 x 1 Round Hd. Philips Screw	2
310	27-9-171-1	Tube Gasket ½" Thick	2	356	27-9-209-1	Charger Plug Ass'y. w/Wires #61	1
311	27-9-170-1	Tube Gasket 5/16" Thick	2	44-9-190-1		Charger Plug Only	
312	27-9-172-6	Washer	2	357	-----	6-32 Hex Nut	2
313	-----	¼ Lock Washer, S/S	8	358	27-9-189-9	Solution Tank Filter	2
314	-----	¼-20 Hex Nut, S/S	8	359	27-9-544-0	90° Nylon Hose Barb, 1"	1
315	36-9-562-1	Hose Clamp	2	360	23-9-214-1	Hose Clamp	1
316	27-9-187-1	Drain Hose, Recovery Tank	1	361	-----	Not Available, Cut 2" from #365	
317	27-9-029-9	Squeegee Vac Hose Ass'y.	1	362	23-9-214-1	Hose Clamp	1
*318	15-9-165-1	¼ Pipe Nipple	1	363	27-9-587-1	Solution Pipe	1
*319	27-9-184-1	Washer	1	364	23-9-214-1	Hose Clamp	1
*320	27-9-185-1	Rubber Washer	1	365	27-9-541-1	Solution Drain Hose	1
*321	27-9-184-1	Washer	1	366	27-9-542-1	Solution Drain Plug, 1"	1
*322	27-9-183-1	¼ NPT Lock Nut	1	367	27-9-585-1	Brass Elbow 90° x ¼ NPT	1
323	27-9-003-1	Solution Tank	1	368	33-9-047-1	Brass Hose Barb ¼ NPT x ½	1
324	27-9-190-1	Clean Water Label	1	369	27-9-584-1	Hose Clamp	1
325	27-9-194-1	Battery & Charger Label	1	370	87-9-113-0	½" Solution Hose	2 ft.
326	27-9-002-1	Battery Cover		371	27-9-549-1	Plug Strap, 1 "	1
327	27-9-015-1	Gasket, Vacuum Chamber	1	**	27-9-589-9	Drain Hose Ass'y., Incl. #359-#370	1
328	27-9-016-6	Vacuum Chamber Plate	1				
329	-----	10-24 x ½ Flat Head Philips Screw	6				
*330	88-9-110-0	Gasket	2 ft.				
331	-----	¼-20 x 1 Hex Bolt, S/S	2				
*332	-----	¼ Lock Washer	2				
333	27-9-013-9	Float w/Weight	1				
334	27-9-012-1	Float Chamber	1				
335	27-9-192-1	Warning Label	1				
336	-----	#10 x ½ Self Tapping Screw	8				
337	27-9-163-1	Hood Cover Gasket	1				
338	27-9-047-3	Air Duct	1				
339	27-9-196-1	NSS Horse Label	1				
340	27-9-161-6	Air Plate	1				
341	27-9-162-1	Gasket					
342	-----	10-24 x ⅝ Self Tapping Rd. Hd. Screw	4				
343	27-9-160-6	Mount Plate	1				
344	46-9-010-1	Gasket					
345	27-9-257-1	Carbon Brush	2				
346	27-9-009-1	Vacuum Motor - Lamb	1				
	27-9-258-9	Vacuum Motor Ass'y.	1				
347	27-9-164-1	Gasket Vacuum Exhaust	1				
*348	32-9-112-1	Vacuum Filter	1				
*349	38-9-114-1	90° Elbow	1				
*350	38-9-066-1	⅝ Hose Barb	1				
*351	87-9-107-0	⅝ Vinyl Tubing	15"				
352	54-9-017-1	Male Push On Coupler	2				
353	27-9-011-1	Wire Clip	1				

* Thru S/N 35H50854



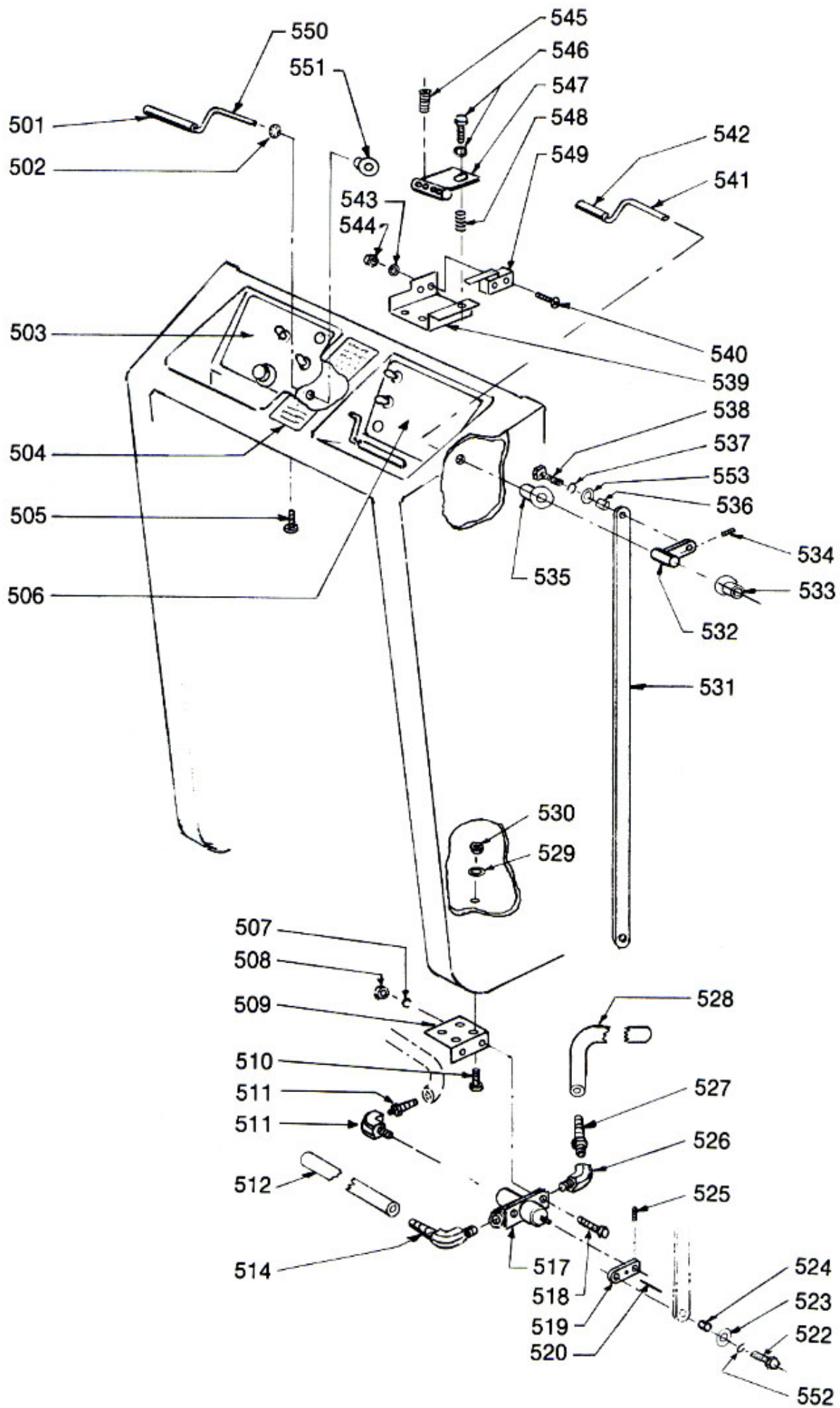
Wrangler 27, Drawing #4

Item No.	Part No.	Part Name	Qty. Req'd.
401	27-9-120-1	Lift Handle, Squeegee	1
402	27-9-269-1	Handle Grip	2
403	27-9-193-1	Squeegee Control Label	1
404	27-9-538-3	Hose Clip	1
405	-----	10-24 x 1/2 Self Tap Philips Screw	4
406	27-9-085-3	Rear Panel	1
407	-----	#10 x 5/8 Pan Hd. Philips Type 25	9
408	27-9-087-1	Shoulder Screw	1
409	27-9-110-1	Lift Shaft-Squeegee	1
410	-----	1/2 Flat Washer	3
414	-----	1/4-20 Lock Nut	2
415	27-9-084-6	Lock Plate, Squeegee	1
	33-9-046-6	Lift Block, Brush	1
420	27-9-128-6	Bushing Spacer	1
421	-----	1/4-20 x 1 Socket Head Cap Screw	3
		1/4-20 x 1 1/4 Socket Head Cap Screw	1
422	27-9-202-1	Contactactor (4 Post)	2
423	27-9-203-1	Contactactor (6 Post)	2
424	-----	10-24 Lock Nut	2
425	-----	1/4 Lock Washer	4
426	27-9-191-1	Brush Control Label	1
427	-----	1/4-20 x 3/8 Truss Hd. Philips Screw	10
428	-----	1/4 Lock Washer	10
429	27-9-224-1	Silicon Rectifier (Diode)	4
430	27-9-080-3	Control Panel	1
431	-----	10-24 x 3/8 Rd. Hd. Philips Screw	4
432	-----	#10 Flat Washer	4
433	-----	5/16 Flat Washer	8
434	-----	5/16-18 x 3/4 Hex Bolt	8
435	27-9-096-1	Clevis Pin 1/2 x 1 1/2	1
436	27-9-097-1	Hair Spring Cotter Pin	1
437	-----	1/4 Flat Washer (SAE)	4
438	-----	1/4-20 x 3/4 Hex Bolt	4
439	27-9-046-1	1/2-13 x 1 1/4 Hex Bolt	1
440	-----	1/2 Flat Washer	1
441	27-9-075-6	Bushing Spacer	1
442	27-9-075-6	Bushing Spacer	1
443	-----	1/2 Flat Washer	1
444	27-9-046-1	1/2-13 x 1 1/4 Hex Bolt	1
445	27-9-201-1	Resistor	1
446	27-9-269-1	Handle Grip	
447	27-9-006-1	Speed Control (Incl. Potentiometer)	1
448	-----	1/4-20 Lock Nut	4
449	27-9-079-3	Angle Support	2
450	-----	1/2 Flat Washer	2
451	27-9-107-1	Lift Shaft, Brush	1
452	27-9-087-1	Shoulder Screw	1
		10-24 Lock Nut	
453	27-9-120-1	Lift Handle, Brush	1
454	27-9-097-1	Hair Spring Cotter Pin	1
455	27-9-095-1	Clevis Pin 3/8 x 1 1/4	1
456	27-9-092-6	Top Clevis	1
457	27-9-094-6	Lift Rod, Brush	1
458	27-9-091-6	Lower Clevis	1
459	-----	3/8-16 Hex Nut	1
460	-----	3/8 Int. Star Lock Washer	1
461	27-9-158-1	Lift Rod Bracket	1
462	-----	1/4-20 Hex Nut	1
463	-----	3/8 Flat Washer	1
464	-----	3/8-16 x 1 Hex Bolt	1
465	27-9-157-1	Threaded Lift Rod, Squeegee	1
466	-----	3/8 Int. Star Lock Washer	1
467	-----	3/8-16 Hex Nut	1
468	-----	3/8 Flat Washer	1
469	-----	3/8-16 x 1 Hex Bolt	1
470	27-9-537-3	Hose Clip	1
471	-----	1/2-13 Hex Nut	1



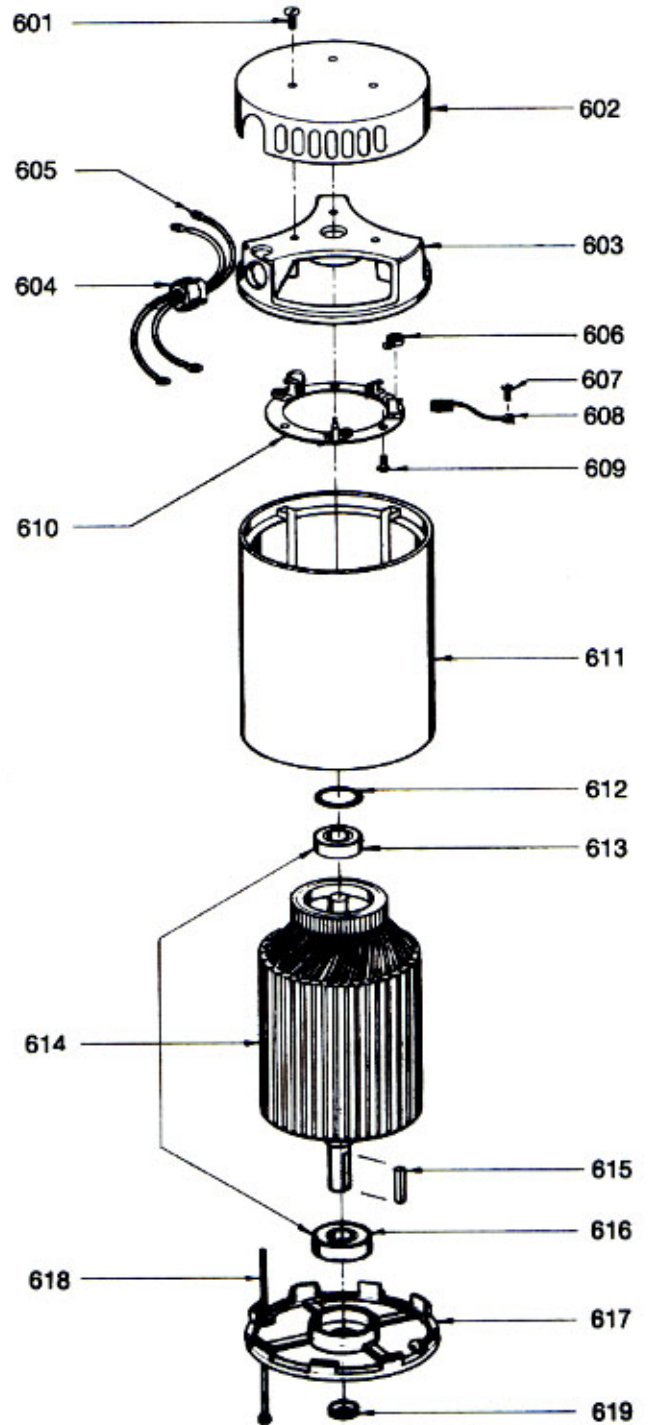
Wrangler 27, Drawing #5

Item No.	Part No.	Part Name	Qty. Req'd.
501	27-9-152-1	Grip	2
502	27-9-156-1	Retaining Ring	2
503	27-9-246-1	Left Control Label	1
504	27-9-245-1	Operating Label	1
505	-----	¼-20 x ½ Truss Hd. Philips Screw	2
506	27-9-247-1	Right Control Label	1
507	-----	¼ Lock Washer	2
508	-----	¼-20 Hex Nut	2
509	27-9-144-6	Valve Bracket	1
510	-----	¼-20 x ¾ Hex Bolt	4
511	27-9-585-1	90° Brass Elbow - ¼ NPT	1
	33-9-047-1	Brass Hose Barb, ½ x ¼ NPT	1
512	87-9-107-0	Vinyl Tubing to Left Brush	32"
514	27-9-179-1	90° Hose Barb - ¼ NPT	1
517	27-9-140-1	Solution Valve	1
518	-----	¼-20 x ⅝ Hex Bolt	2
519	27-9-141-6	Valve Lever	1
520	-----	3/16 x 1 Roll Pin	1
522	-----	¼-20 x ¾ Hex Bolt	1
523	-----	¼ Flat Washer	1
524	27-9-128-6	Bushing Spacer	1
525	-----	3/32 x ⅝ Roll Pin	1
526	27-9-586-1	45° Brass Elbow - ¼ NPT	1
527	38-9-066-1	Hose Barb x ¼ MPT	1
528	87-9-107-0	Tubing to Right Brush	21"
529	-----	¼ Flat Washer	4
530	-----	¼-20 Lock Nut	4
531	27-9-142-1	Valve Link	1
532	27-9-143-6	Valve Arm	1
533	27-9-153-2	Flang Bearing	1
534	-----	10-24 x ¾ Set Screw	1
535	27-9-153-2	Flange Bearing	1
536	27-9-128-6	Bushing Spacer	1
537	-----	¼-20 Lock Washer	1
538	-----	¼-20 x ¾ Hex Bolt	1
539	27-9-150-6	Switch Bracket	1
540	-----	6-32 x 1 Round Hd. Philips Screw	2
541	27-9-146-6	Valve Handle	1
542	27-9-147-1	Valve Handle Grip	1
543	-----	#6 External Star Washer	2
544	-----	6-32 Hex Nut	2
545	-----	¼-20 x 5/16 Set Screw	4
546	-----	⅜-16 x 20 Hex Bolt	1
Not Shown	-----	⅜ Flat Washer	1
547	27-9-154-6	Handle Mount	1
548	27-9-169-1	Spring	1
549	44-9-107-1	Switch	1
550	27-9-151-6	Switch Handle	2
551	27-9-155-2	Flange Bearing	2
552	-----	¼ Lock Washer	1
553	-----	¼ Flat Washer	1



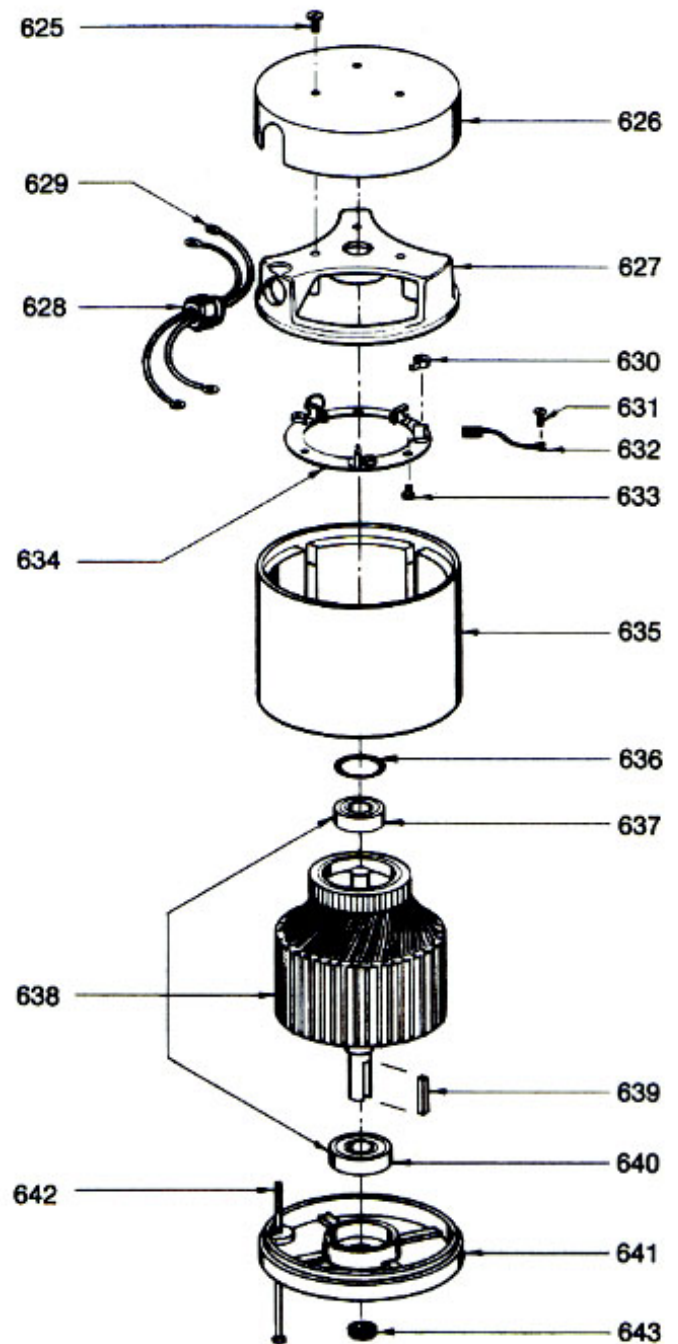
Brush Motor 27-9-008-1

Item No.	Part No.	Part Name	Qty. Req'd.
601		1/4-20x3/8 Pan Head Screw	3
602	27-9-764-1	Top Cover	1
603	27-9-754-1	Top End Bell w/Brush Board Ass'y	1
604	27-9-763-1	Heyco	1
605	27-9-758-1	Lead Ass'y (1 wire w/terminals)	2
606	27-9-757-1	Brush Spring	4
607		10-32x3/8 Brass Pan Head Screw	4
608	27-9-756-1	Brush Ass'y (Carbon Brush w/lead & terminal)	4
609		10-24-x1/2 Self Tapping Rd. Hd. Screw	3
610	27-9-755-1	Brush Board Ass'y w/springs & brushes	1
611	27-9-750-1	Stator Frame Ass'y. w/magnets	1
612	27-9-759-1	Helical Washer	1
613	27-9-753-1	Bearing F.E. (Commutator End)	1
614	27-9-751-1	Armature Ass'y w/bearings	1
615	27-9-268-1	Shaft Key	1
616	27-9-752-1	Bearing, B.E. (Shaft End)	1
617	27-9-762-1	Bottom End Bell (Back End Bracket)	1
618	27-9-760-1	Thru Bolt	2
619	27-9-773-1	Shaft Seal	1



Drive Motor 27-9-010-1

Item No.	Part No.	Part Name	Qty. Req'd.
625		1/4-20x3/8 Pan Head Screw	3
626	27-9-772-1	Top Cover	1
627	27-9-767-1	Top End Bell w/Brush Board Ass'y	1
628	27-9-763-1	Heyco	1
629	27-9-758-1	Lead Ass'y (1 wire w/terminals)	2
630	27-9-757-1	Brush Spring	4
631		10-32x3/8 Brass Pan Head Screw	4
632	27-9-769-1	Brush Ass'y (Carbon Brush w/lead & terminal)	4
633		10-24-x1/2 Self Tapping Rd. Hd. Screw	3
634	27-9-768-1	Brush Board Ass'y w/springs brushes	1
635	27-9-765-1	Stator Frame Ass'y. w/magnets	1
636	27-9-759-1	Helical Washer	1
637	27-9-753-1	Bearing F.E. (Commutator End)	1
638	27-9-766-1	Armature Ass'y w/bearings	1
639	27-9-268-1	Shaft Key	1
640	27-9-752-1	Bearing, B.E. (Shaft End)	1
641	27-9-771-1	Bottom End Bell (Back End Bracket)	1
642	27-9-770-1	Thru Bolt	2
643	27-9-773-1	Shaft Seal	1



Wiring Diagram Wrangler 27

Marker & Item No.	Part No.	Gauge x Length	Terminals	Where Used
1	23-9-198-1	4 x 15	Ring Terminals (2)	Battery Jumper Cable (2 required)
3	44-9-120-1	6 x 14	#10 Ring-5/16 Ring	Circuit Breaker - Brush Solenoid
6	44-9-127-1	6 x 56	5/16 Ring - ¼ Ring	Drive Motor - Reverse Solenoid
35	27-9-210-1	6 x 56	5/16 Ring - ¼ Ring	Drive Motor - Forward Solenoid
36	27-9-211-1	4 x 60	Battery - 5/16 Ring	Negative Battery - Main Solenoid
37	27-9-615-1	4 x 60	Battery - 5/16 Ring	Pos. Battery - Forward Solenoid
38	27-9-616-1	6 x 56	5/16 Ring ¼ Ring	Brush Motors - Forward Solenoid
39	27-9-215-1	6 x 50	¼ Ring - #10 Ring	Brush Motors - Circuit Breaker
40	27-9-227-1	12 x 60	¼ Insulated Male Spade - Female Spade ¼	Vacuum Motor - Switch
41	27-9-228-1	12 x 60	¼ Insulated Male Spade - 5/16 Ring	Vacuum Motor - Solenoid
42	27-9-213-1	6 x 12	5/16 Ring - ¼ Ring	Forward Pos. Solenoid - Speed Control
43	27-9-229-1	6 x 12	5/16 Ring - ¼ Ring	Male Neg. Solenoid - Battery Speed Control
44	27-9-230-1	6 x 12	5/16 Ring - ¼ Ring	Reverse Neg. Solenoid - Armature Speed Control
45	27-9-212-1	6 x 22	5/16 Ring - 10 Ring	Reverse Solenoid - Resistor
46	27-9-231-1	6 x 22	5/16 Ring - 10 Ring	Resistor - Forward Solenoid
47	27-9-214-1	6 x 6	5/16 Ring (Both) (2)	Forward & Reverse Solenoid Term. - Term.
48	27-9-232-1	6 x 6	5/16 Ring (Both)	Forward Solenoid - Reverse Solenoid
49	27-9-216-1	14 x 12	¼ Female Spade (Both)	Forward/Reverse Switch - Deadman Switch
50	27-9-217-1	14 x 17	3/16 Female Spade - 5/16 Ring	Brush Solenoid - Light
51	27-9-218-1	14 x 8	#10 Ring (Both)	Brush Solenoid - Reverse Solenoid
52	27-9-233-1	14 x 8	#10 Ring (Both)	Forward Solenoid - Reverse Solenoid
53	27-9-219-1	14 x 6	5/16 Ring - 10 Ring	Main Solenoid Terminal - Terminal
54	27-9-234-1	14 x 6	5/16 Ring - 10 Ring	Brush Solenoid Terminal - Terminal
55	27-9-220-1	14 x 24	10 Ring - ¼ Female Spade	Reverse Solenoid - Forward/Reverse Switch
56	27-9-235-1	14 x 24	10 Ring - ¼ Female Spade	Forward Solenoid - Reverse/Forward Switch
57	27-9-221-1	14 x 26	¼ Female Spade - 10 Ring	Brush Solenoid - Brush Switch
58	27-9-236-1	14 x 26	¼ Female Spade - 10 Ring	Main Solenoid - Master Switch
59	27-9-222-1	14 x 10	¼ Female Spade w/Piggy Back (Both)	Brush Switch - Master Switch
60	27-9-223-1	14 x 3	¼ Female Spade w/Piggy Back (Both)	Vacuum Switch Jumper
61	27-9-209-1	———	Anderson Charger Plug w/wires, 36 Volt	Battery Charger to Batteries
	44-9-190-1	———	Anderson Charger Plug Only, 36 Volt	Battery Charger to Batteries
WIRES	———	10 x 30"	Anderson Crimpon - ⅜ Ring	Charger Plug to Battery
WIRES	———	10 x 22"	Anderson Crimpon - ⅜ Ring	Charger Plug to Battery
62	27-9-237-1	14 x 6	¼ Female Spade (Both)	Vacuum Switch - Brush Switch
63	27-9-238-1	6 x 13	5/16 Ring (Both)	Brush Solenoid - Main Solenoid
64	27-9-239-1	14 x 5	3/16 Female Spade - ¼ Female Spade	Master Switch - Light
65	27-9-240-1	12 x 34	5/16 Ring - ¼ Female Spade	Reverse Solenoid - Vacuum Switch
66	27-9-241-1	14 x 28	5/16 Ring - ¼ Female Spade	Reverse Solenoid - Deadman Switch
RED	27-9-242-1	18 x 30	Butt - Twist & Tin	Potentiometer - Speed Control
ORANGE	27-9-243-1	18 x 3	Butt - Twist & Tin	Potentiometer - Speed Control
WHITE	27-9-244-1	18 x 3	Butt - Twist & Tin	Potentiometer - Speed Control

