



Electronic Service Manuals

This electronic document is provided as a service to our customers. We do not create the contents of the information contained in this document. Should you have detailed questions pertaining to the information contained in this document, you may contact Michco, or the manufacturer which provided the original information in this electronic deliverable. Michco's only part in this electronic deliverable was the electronic assembly process. By providing this manual on line we are not guaranteeing parts availability.

You may contact Michco through the following methods:

Phone (517) 484-9312 or (800) 331-3339

2011 N. High St. -- Lansing, Michigan -- 48906

Fax: (517) 484-9836

Email: CustServe@Michco.com

Web site: www.Michco.Com

Parts Web site: www.FloorMachineParts.Com

Order Parts on Line at:

www.FloorMachineParts.Com

Directly to Parts & Service:

By Email: **Shop@Michco.com**

By Fax: (517) 702-2041

By Voice: Use numbers above.

Serving the Cleaning Industry Since 1922

Notice: All copyrighted material remains property of original owners, all trademarks are property of respective owners. Manuals are subject to Manufacturer's reproduction limitations. Originals or reproductions were provided by manufacturers through a request. We make no warranty as to the correctness of information provided in this document and you assume all risk. By placing these manuals on line we are not declaring our corporation to be an manufacturer authorized dealer or provider, please check our web site for authorized manufacturers we represent.



Parts Manual
Max Ride 26 Floor Scrubber
Disc Brush Drive

PREFACE

Thank you for your purchase of the new industry standard for scrubbers. Minuteman International takes great pride in offering the most dependable, reliable and best value in industrial power sweepers and sweeper / scrubbers. We set the standard.

Our Customer Service Department would like to hear from you. If you see any errors, omissions or something that needs clarification in this Parts Catalog please let us know. We are working hard towards continually improving our processes to bring you the best you deserve. Please copy the form below, fill out and comment on how you found our catalog.

Thank you!

The Minuteman International Team

Name: _____

Title: _____

Company Name: _____

Address: _____

Country: _____

Type of equipment or model number: _____

Comments: _____

Please return to:

Customer Service Manager
Minuteman International, Inc.
14N845 U.S. Route 20
Pingree Grove, Illinois 60140 USA

Phone: (800) 323-9420

Email: tech@minutemanintl.com

Technical Specifications

Model **Max Ride 26**
Models: A-MR26D, A-MR26DQP, A-MR26DQPG, A-MR26DQPT,
A-MR26DS, A-MR26DSQP, A-MR26DSQPG, A-MR26DSQPT,
A-MR26DINT, A-MR26DQPINT, A-MR26DSINT, A-MR26DSQPINT

| Model | MAX Ride 26 |
|-------------------------------------|--|
| Scrub Head Type | Disc |
| Scrub Path | 26 in/two 13" brushes (66 cm) |
| Solution Capacity | 21 gal (79L) |
| Recovery Capacity | 23.5 gal (89L) |
| Max Speed | 3.1 mph (5 kh) |
| Max Productivity | 32,490 sq. ft/hr (3018 sq. m/hr) |
| Actual Productivity | 24,562 sq. ft/hr (2282 sq. m/hr) |
| Brush Pressure | 74 lbs/102 Nm |
| Brush Speed | 175-400 RPM |
| Brush Motor | 400/600 watts |
| Vacuum Motor | 550 watts |
| Vacuum Airflow | 69 cfm (32.4L /sec) |
| Vacuum Waterlift | 68" H2O (172 cm H2O) |
| Sound Pressure | 68 dba |
| Water Flow | .45 gpm (1.7L / min) |
| Min. Turn-Around Aisle Width | 55" (140 cm) |
| Maximum Ramp Climbing | 2% |
| Squeegee Width | 31" (78 cm) |
| Machine Voltage | 24 VDC |
| Power Source | Battery (2) 12V 210 AH |
| Battery Charger | On Board |
| Maximum Run Time | 3-3.5 hrs. |
| Dimensions W/ Squeegee | 52"L x 31"W x 45" H (132 cm x 78 cm x 114 cm) |
| Weight Without Batteries | 437 lbs (198 kg) No Solution |
| Weight With Batteries | 882 lbs (400 kg) Full Solution and 210 AH battery pack |
| Approvals | None |
| IP Protection Class | IPX4 |

For Safety When Servicing or Maintaining Machine

- Stop on level surface.
- Disconnect the power to the machine by pulling the red Battery Connector located under the recovery tank near the batteries.
- Avoid moving parts. Do not wear loose jackets, shirts, or sleeves when working on machine.
- Avoid contact with battery acid. Battery acid can cause burns. When working on or around batteries, wear protective clothing and safety glasses. Remove metal jewelry. Do not lay tools or metal objects on top of batteries.
- Do not clean machine with a pressure washer.
- Authorized personnel must perform repairs and maintenance. Use Minuteman supplied replacement parts.

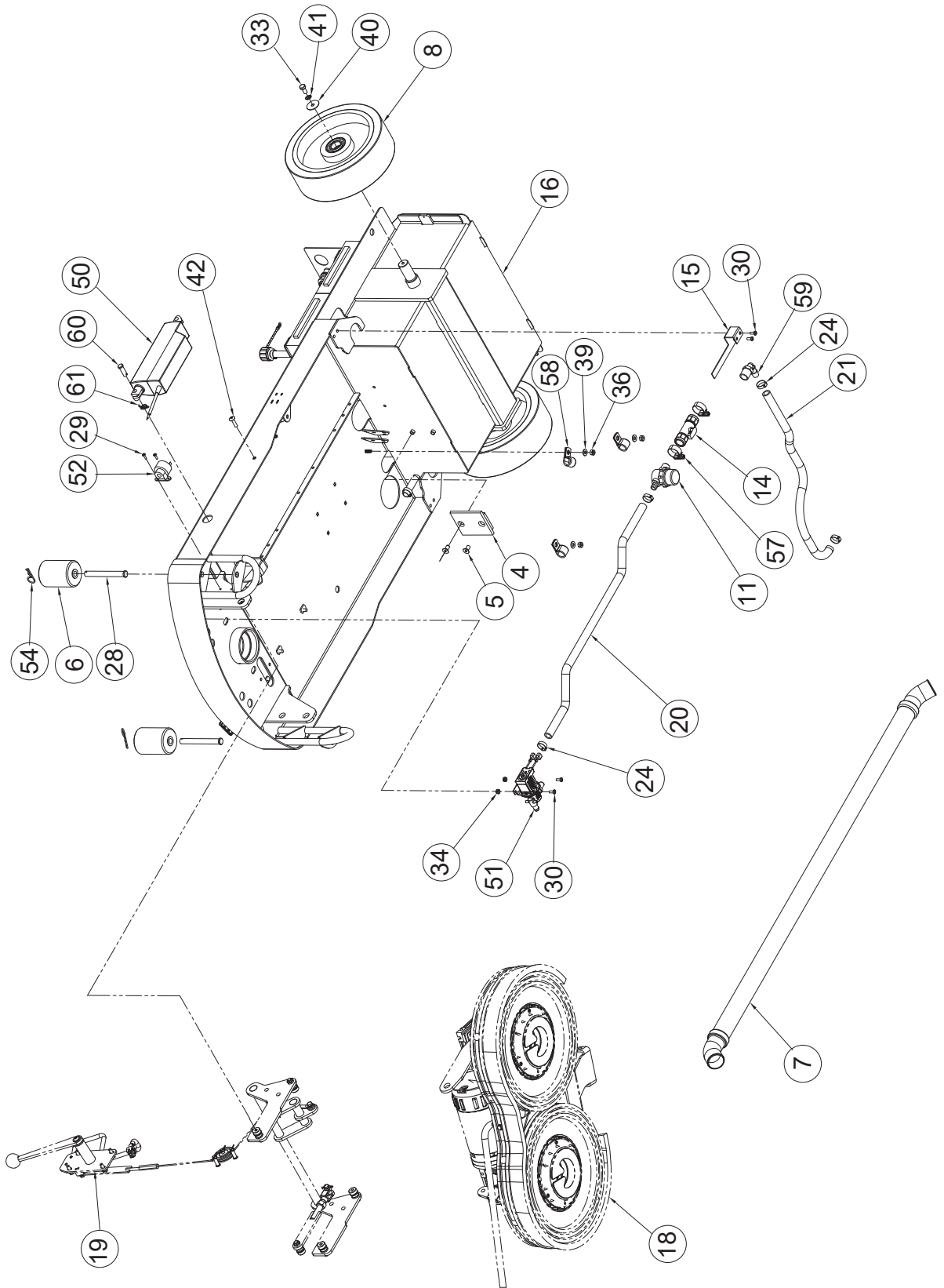
TABLE OF CONTENTS

| | |
|--|----|
| Technical Specifications | 3 |
| Brush, Battery and Charger Options | 5 |
| Frame Group (Pg 1 of 2) | 6 |
| Frame Group (Pg 2 of 2) | 7 |
| Tower Group | 10 |
| Tank Group (Pg 1 of 2) | 12 |
| Tank Group (Pg 2 of 2) | 13 |
| Electrical Panel Assembly | 16 |
| Steering Column Group..... | 18 |
| Scrub Head Group..... | 20 |
| Scrub Head Lift Group..... | 22 |
| Squeegee Group | 24 |
| Squeegee Lift Group | 26 |
| Wiring Diagrams - ECO Models | 28 |
| Wiring Diagrams - Sport Models..... | 36 |
| Warranty | 44 |

Brush, Battery and Charger Options

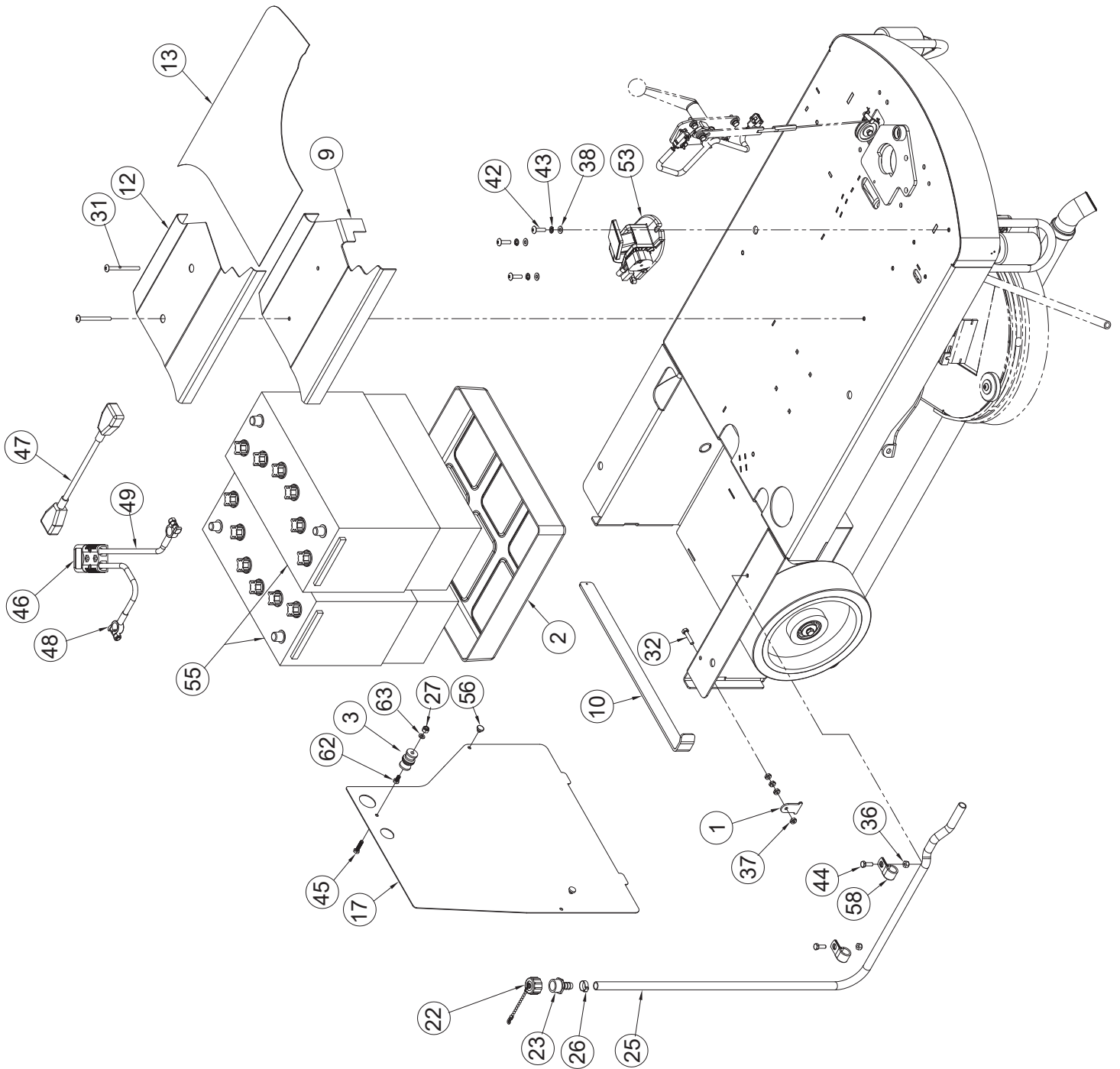
| BATTERY AND CHARGER OPTIONS | | | |
|---|-------------------------|-------------------------|-------------------------------|
| MODEL | BATTERY PART NO. | CHARGER PART NO. | DESCRIPTION |
| A-MR26DQPG, A-MR26DSQPG | 956748 | 957764-4 | BATTERY, 12V 234AH AGM |
| A-MR26DQPT, A-MR26DSQPT | 956756 | 957764-2 | BATTERY, WET 12V 225AH TROJAN |
| A-MR26DQP, A-MR26DQPINT, A-MR26DSQP, A-MR26DSQPINT | 956210 | 957764-2 | BATTERY, 12V 210AH |

| BRUSH OPTIONS | | | |
|----------------------|--------------------------------------|-------------------------|----------------------------------|
| | | AQUASTOP BRUSHES | |
| PART # | DESCRIPTION | PART # | DESCRIPTION |
| 245818-1 | BRUSH-DISC, 13" NYLON, BLACK | 99751310 | BRUSH-LIGHT DUTY (SP), WHITE 13" |
| 245818-3 | BRUSH-DISC, 13" 80GR GREEN | 99730710 | BRUSH-MEDIUM GRAY 13" |
| 245818-2 | PAD DRIVER, 13" | 99751910 | BRUSH-HEAVY, GRAY 13" |
| 762370 | PAD RETAINER - REMOVABLE - NOT SHOWN | | |
| 762394 | PAD RETAINER - FIXED - NOT SHOWN | | |



Rev C

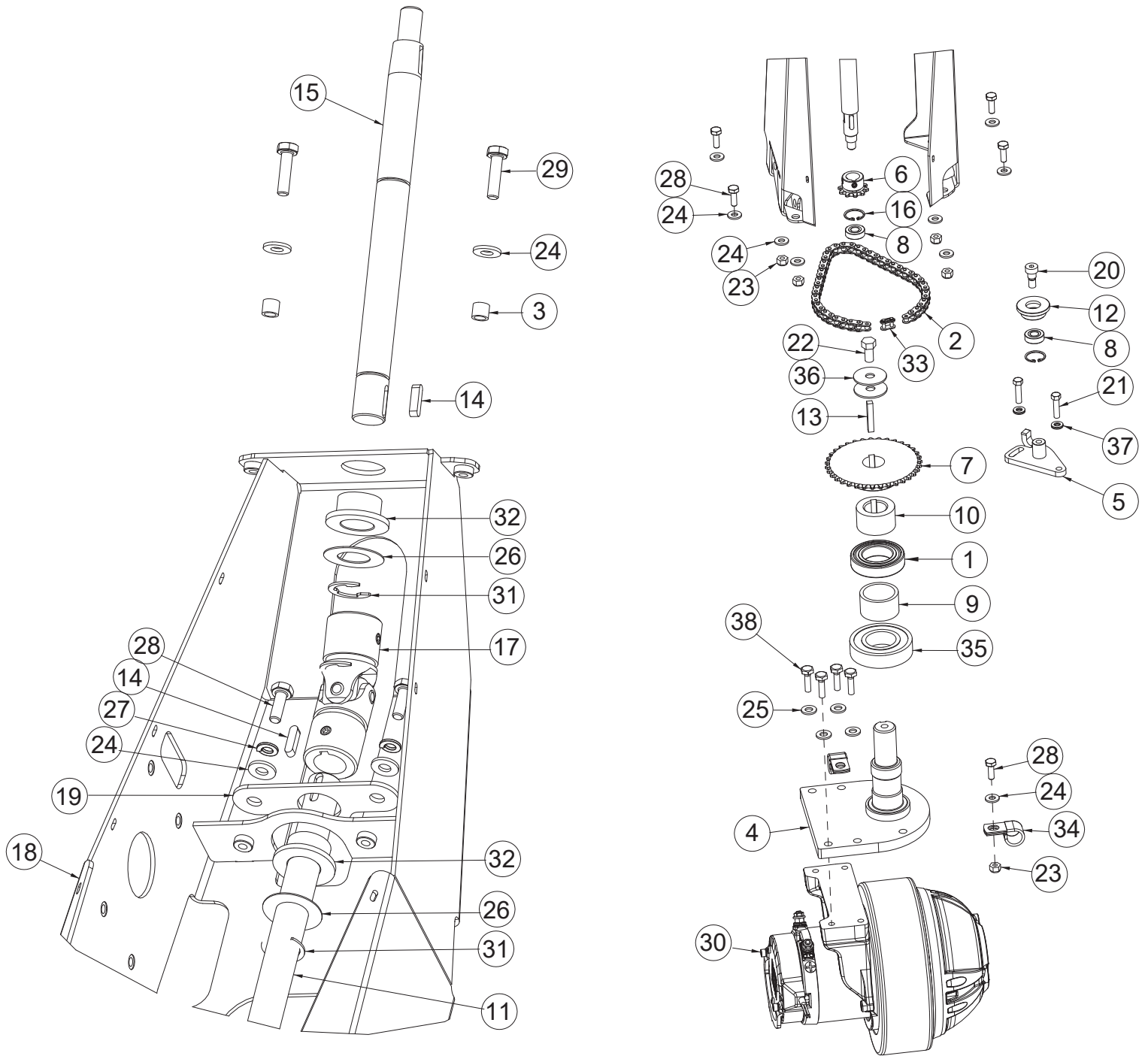
Frame Group (Pg 2 of 2)



| BILL OF MATERIAL - 246570 | | | |
|---------------------------|----------|-----|--|
| ITEM | PART NO. | QTY | DESCRIPTION |
| 1 | 245213 | 1 | RETAINER-BATTERY BAR |
| 2 | 245216 | 1 | BOX-BATTERY-MAX 26 |
| 3 | 245222 | 1 | LATCH-RUBBER |
| 4 | 245304 | 1 | BLOCK, SLIDE |
| 5 | 245338 | 2 | SCR-FHSCS 5/16-18 X 5/8 SS |
| 6 | 245419 | 2 | ROLLER, BUMPER, 2.5 DIA. |
| 7 | 245450 | 1 | HOSE-VAC, CLEAR 1.50"ID X 43 LONG |
| 8 | 245461 | 2 | WHEEL - ASSY, IDLER, 254 x 80 W/BRGS |
| 9 | 245570 | 1 | WELDMENT, RISER, 26" |
| 10 | 245662 | 1 | BAR, BATTERY RETAINER |
| 11 | 245781 | 1 | FILTER - 1/2 MPT X 1/2 HB |
| 12 | 245803 | 1 | TREAD, ANTI-SKID, RISER 26" |
| 13 | 245804 | 1 | TREAD, ANTI-SKID, FRAME 26" |
| 14 | 245845 | 1 | VALVE- BALL 1/2 FPT X 1/2 FPT |
| 15 | 246073 | 1 | PLATE - MTG - BALL VALVE AND FILTER |
| 16 | 246540 | 1 | WELDMENT, FRAME, 26 |
| 17 | 246549 | 1 | COVER, REAR 26 |
| 18 | 246576 | 1 | TANK GROUP, 26" |
| 19 | 246574 | 1 | SCRUB HEAD LIFT GROUP, 26" |
| 20 | 246650 | 1 | TUBING, .50 ID X .13 WAL BRA VIN 28.0 IN |
| 21 | 246651 | 1 | TUBING, .50 ID X .13 WAL BRA VIN 22.0 IN |
| 22 | 283690 | 1 | ASSY, BREATHER CAP W LANYARD |
| 23 | 342445 | 1 | FTG-GARDEN ST 1/2 HB PP |
| 24 | 383347 | 5 | CLAMP-CRIMP 1/2 HOSE |
| 25 | 430232 | 1 | HOSE, 1/2 ID X 48", CLEAR |
| 26 | 450076 | 1 | CLAMP-HOSE 5/8 (.590-.791) SS |
| 27 | 600933 | 1 | NUT-NYLOC M6-1.00 SS |
| 28 | 620027 | 2 | PIN-CLEVIS 1/2 X 4.50 ZP |
| 29 | 710204 | 2 | SCR-PHMS 6-32 X .50 ZP |
| 30 | 710355 | 4 | SCR-RHMS 10-32 X .50 ZP |
| 31 | 710592 | 2 | SCR-THMS 1/4-20 X 3.00 SS |
| 32 | 711210 | 1 | SCR-HH 1/4-20 X 1.25 ZP GR 5 FULL THRD |
| 33 | 711227 | 2 | SCR-HH 5/16-18 X .62 ZP GR 5 |

Frame Group BOM (Pg 2 of 2)

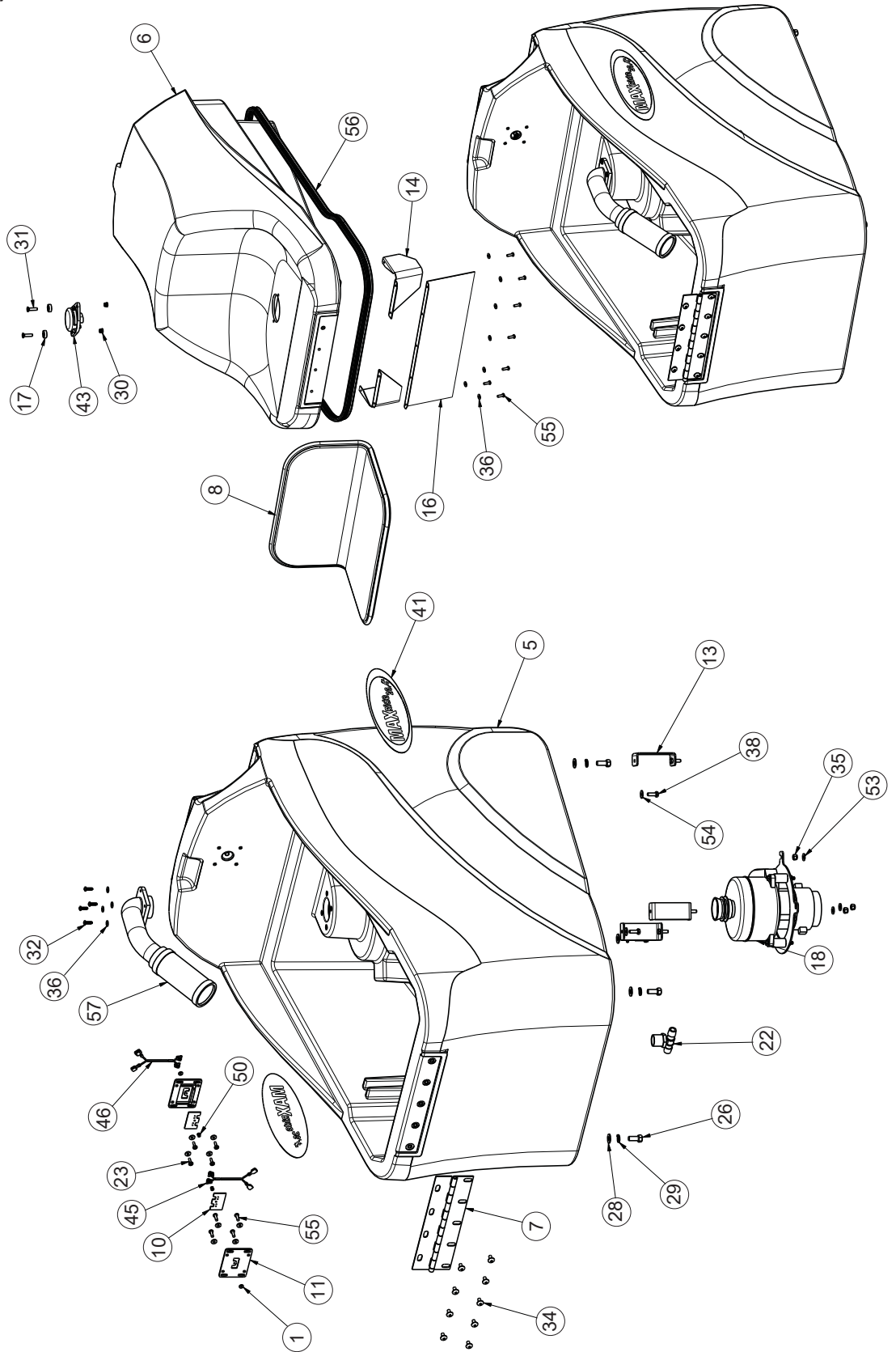
| BILL OF MATERIAL - 246570 | | | |
|---------------------------|----------|-----|---|
| ITEM | PART NO. | QTY | DESCRIPTION |
| 34 | 711350 | 2 | NUT-NYLOC 10-32 ZP |
| 35 | 711371 | 2 | NUT-NYLOC 6-32 ZP |
| 36 | 711373 | 5 | NUT-NYLOC 1/4-20 ZP |
| 37 | 711387 | 4 | NUT-JAM 1/4-20 ZP NYLOC |
| 38 | 711504 | 3 | WASHER-FLAT 1/4 SS |
| 39 | 711505 | 5 | WASHER-FLAT 1/4 ZP |
| 40 | 711516 | 2 | WASHER-FLAT 5/16 X 1.25 X .05 ZP |
| 41 | 711545 | 2 | WASHER-LOCK 5/16 SPLIT ZP |
| 42 | 712541 | 4 | SCR-THMS 1/4-20 X 1.00 SS |
| 43 | 712758 | 3 | WASHER-LOCK 1/4 SPLIT SS |
| 44 | 713002 | 2 | SCR-HH 1/4-20 X .75 ZP 5 |
| 45 | 731006 | 1 | SCR-HH M6-1.00 X 25 ZP CLASS 8.8 |
| 46 | 740159 | 1 | CONNECTOR-SB175 RED HOUSING |
| 47 | 740164-1 | 1 | CABLE ASSY- BATTERY JUMPER, 4G RED 12" |
| 47a | 748482 | | BATTERY CABLE - JUMPER (AGM BATTERY MODELS) |
| 48 | 740167 | 1 | BATTERY CABLE, RED 4AWG SB175 |
| 48a | 748480 | | BATTERY CABLE - POSITIVE (AGM BATTERY MODELS) |
| 49 | 740168 | 1 | BATTERY CABLE, BLACK 4AWG SB175 |
| 49a | 748481 | | BATTERY CABLE - NEGATIVE (AGM BATTERY MODELS) |
| 50 | 740827-1 | 1 | ACTUATOR - 40MM STROKE- 750 N FORCE TERM |
| 51 | 741299-1 | 1 | WATER VALVE ASSY, 24 VDC |
| 52 | 748200 | 1 | HORN / BACK UP ALARM, 9-48VDC |
| 53 | 748507 | 1 | PEDAL ASSY, THROTTLE, FLOOR MTG 25°, IEC |
| 54 | 833374 | 2 | PIN-HAIRPIN COTTER 3/8 |
| 55 | 956210 | 2 | BATTERY, 12V 210AH |
| 56 | 3300526 | 2 | BUMPER-RUBBER 1/4 ID X 1/8 THK |
| 57 | 3300535 | 2 | CLAMP-HOSE 1.00 NOM |
| 58 | 3301158 | 5 | CLAMP-CABLE 11/16" DIA |
| 59 | 3315535 | 1 | FTG-ELBOW 90 1/2 MPT X 1/2 HB PP |
| 60 | 3400117 | 1 | PIN-CLEVIS 3/8 x 1.125 ZP |
| 61 | 3400125 | 1 | RING-RUE 3/8 |
| 62 | 11038064 | 1 | BLT-HH M6 X 1.0 X 12 STL ZD 8.8 DIN 933 |
| 63 | 12310033 | 1 | WASHER-FLAT M6.4 X 12 X 1.6 ZP |



Rev C

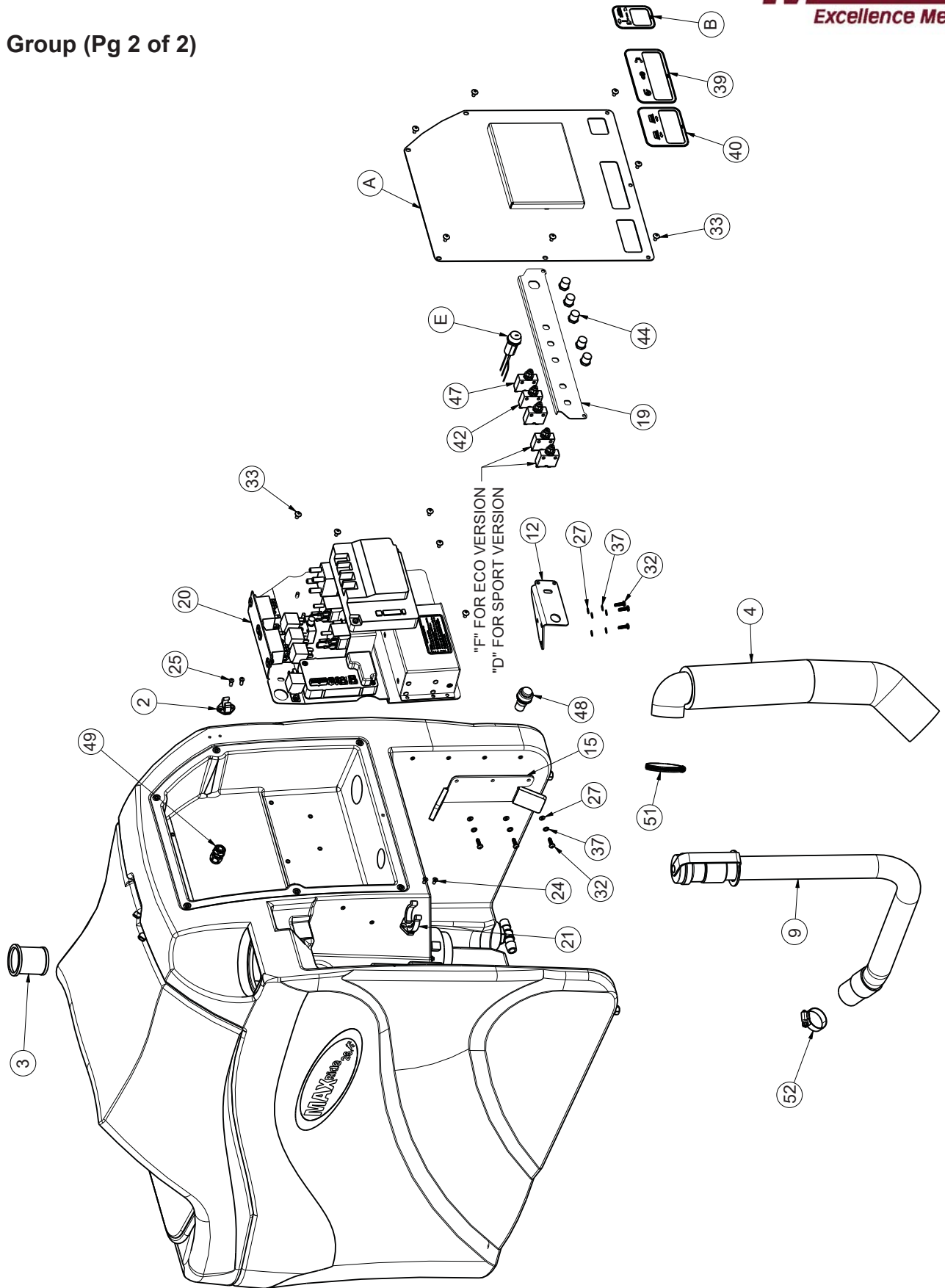
Tower Group BOM

| BILL OF MATERIAL - 246164 | | | |
|---------------------------|------------|-----|--|
| ITEM | PART NO. | QTY | DESCRIPTION |
| 1 | 245416 | 1 | BALL BEARING 35MM X 62MM OD X 14MM W |
| 2 | 245445-1 | 1 | CHAIN - ROLLER #35 - 45P |
| 3 | 245583 | 2 | SPACER, .266 B, .313 OD, .313 T |
| 4 | 246022 | 1 | WELDMENT, SPINDLE, STEERING |
| 5 | 246025 | 1 | WELDMENT, BRKT, TENSION, CHAIN, STEERING |
| 6 | 246028 | 1 | SPROCKET, ANSI 35, 10 TOOTH, 0.375P, 0.6 |
| 7 | 246029 | 1 | SPROCKET, ANSI 35, 35 TOOTH, 0.375P, 1.0 |
| 8 | 246030 | 2 | BEARING, BALL, 0.375B 0.875D, SEALED |
| 9 | 246031 | 1 | SPACER, 1.75D 1.44B 1.12L, STL |
| 10 | 246032 | 1 | PIVOT, STOP, STEERING |
| 11 | 246033 | 1 | SHAFT, STEERING, LOWER |
| 12 | 246034 | 1 | GUIDE, TENSION, CHAIN |
| 13 | 246035 | 1 | KEY, SQ, 0.25 X 0.25 X 1.50 |
| 14 | 246036 | 3 | KEY, SQ, 0.18 X 0.18 X 0.75 |
| 15 | 246037 | 1 | SHAFT, STEERING, UPPER |
| 16 | 246038 | 2 | RING, RTNR, 0.971D 0.046T, STL |
| 17 | 246039 | 1 | U-JOINT, 25DEG, 0.75B 1.06D 3.75L |
| 18 | 246040 | 1 | WELDMENT, TOWER, STEERING |
| 19 | 246042 | 1 | PLATE, BEARING, STEERING |
| 20 | 246067 | 1 | BLT-SHOULDER .375 X .312 LG BLK OX |
| 21 | 711207 | 2 | SCR-HH 1/4-20 X 1.00 ZP GR 5 |
| 22 | 711241 | 1 | SCR-HH 3/8-16 X .75 ZP GR 5 |
| 23 | 711373 | 5 | NUT-NYLOC 1/4-20 ZP |
| 24 | 711505 | 13 | WASHER-FLAT 1/4 ZP |
| 25 | 711506 | 4 | WASHER-FLAT 5/16 X .688 ZP |
| 26 | 711517 | 2 | WASHER-FLAT .77 X 1.37 X .03 |
| 27 | 711544 | 2 | WASHER-LOCK 1/4 SPLIT ZP |
| 28 | 713002 | 7 | SCR-HH 1/4-20 X .75 ZP 5 |
| 29 | 713003 | 2 | SCR-HH 1/4-20 X 1.00 ZP GR 5 |
| 30 | 748523 | 1 | WHEEL DRIVE, 24V 300W |
| 31 | 809148 | 3 | RET RING-E TYPE .75 |
| 32 | 832554 | 2 | BUSHING-FLG .7505 X 1.437 X .625 BRNZ |
| 33 | 833292 | 1 | CHAIN MASTER LINK #35 |
| 34 | 3301158 | 2 | CLAMP-CABLE 11/16" DIA |
| 35 | 3305667 | 1 | BEARING-MAIN BROOM |
| 36 | 3400092 | 2 | WASHER-FENDER 3/8 X 1.50 ZP |
| 37 | 3401570-7W | 2 | WASHER-NORD-LOCK, 1/4, 0.53 OD, ZP |
| 38 | 11038247 | 4 | SCR-HH M8-1.25 X 25 ZP CLASS 8.8 |



Rev A

Tank Group (Pg 2 of 2)



Rev B

Tank Group BOM (Pg 1 of 2)

| BILL OF MATERIAL - 246576 | | | |
|---------------------------|----------|-----|--|
| ITEM | PART NO. | QTY | DESCRIPTION |
| 1 | 950-4-S | 2 | BACKUP PLATE - RIVET |
| 2 | 172065 | 1 | CLIP, FOR 1/2" ID HOSE |
| 3 | 172159 | 1 | FILTER, FILL PORT, ES1720 |
| 4 | 241049 | 1 | VAC MOTOR MUFFLER, SCV 24/26 |
| 5 | 245004 | 1 | TANK, SOLUTION & RECOVERY ER26-V |
| 6 | 245005 | 1 | LID, W/ SEAT, TANK, ER26-V |
| 7 | 245422 | 1 | HINGE, STEEL, 11.38" LONG |
| 8 | 245444 | 1 | SEAT-CUSHIONED, SEWN SEAT & BACK |
| 9 | 245452 | 1 | HOSE-DRAIN W/ TWIST VALVE 1.50" ID |
| 10 | 245453 | 2 | PLATE - INSERT, INTERCONNECT |
| 11 | 245456 | 2 | PLATE - BASE, INTERCONNECT |
| 12 | 245660 | 1 | BRACKET - MTG, REAR COVER LATCH & ELEC |
| 13 | 245663 | 3 | WELDMENT, VAC MOTOR PILLAR |
| 14 | 245766 | 2 | SKIRT-DRIP, LID, END PIECE |
| 15 | 245794 | 1 | HOLDER - CORD, W/ SOFT CAPS, BATT CHARGR |
| 16 | 245805 | 1 | SKIRT - DRIP, LID, CENTER 26" |
| 17 | 245817 | 2 | SPACER, .39 ID X .75 OD X .25 T, PVC |
| 18 | 245844 | 1 | ASSY, VACUUM & HOUSING |
| 19 | 245907 | 1 | BRACKET, BREAKER MOUNT, 26" |
| 20 | 246167 | 1 | ASSY, ELECTRICAL PANEL, 20/26 |
| 21 | 260579 | 1 | TOOL CLIP, 1.5" HOSE |
| 22 | 342440 | 1 | FITTING, TEE 3/4MPT 1/2BARB |
| 23 | 710130 | 4 | SCR-MC 8-32 X .62 NICKEL |
| 24 | 710528 | 2 | SCR-MC 8-32 X .37 FH - BR |
| 25 | 711163 | 2 | SCR-HI/LO #10-16 X 1/2 |
| 26 | 711246 | 4 | BLT-HH 3/8-16 X .87 STL Z |
| 27 | 711502 | 6 | WASHER-FLAT #8 ZP |
| 28 | 711515 | 4 | WSR-FLAT .406 X .812 X .0625 |
| 29 | 711546 | 4 | WSR-HELICAL 3/8 |
| 30 | 711962 | 2 | NUT, 1/4-20, HIGH-TORQUE 12 POINT FLANGE |
| 31 | 712153 | 2 | SC-SHCS, 1/4-20 x 1.00 IN SS |
| 32 | 712536 | 10 | SCR-MC 10-24 X .62 TH SS |
| 33 | 712540 | 12 | SCR-MC TR HD 10-24 X .37 SS |
| 34 | 712560 | 9 | SCR-MCH 1/4-20 X .50 SS NYL |
| 35 | 712667 | 3 | NUT-NYLOC 1/4-20 SS |
| 36 | 712764 | 19 | WASHER-FLAT #10 SS |
| 37 | 712770 | 6 | WSR INT LOCK #10A SS |

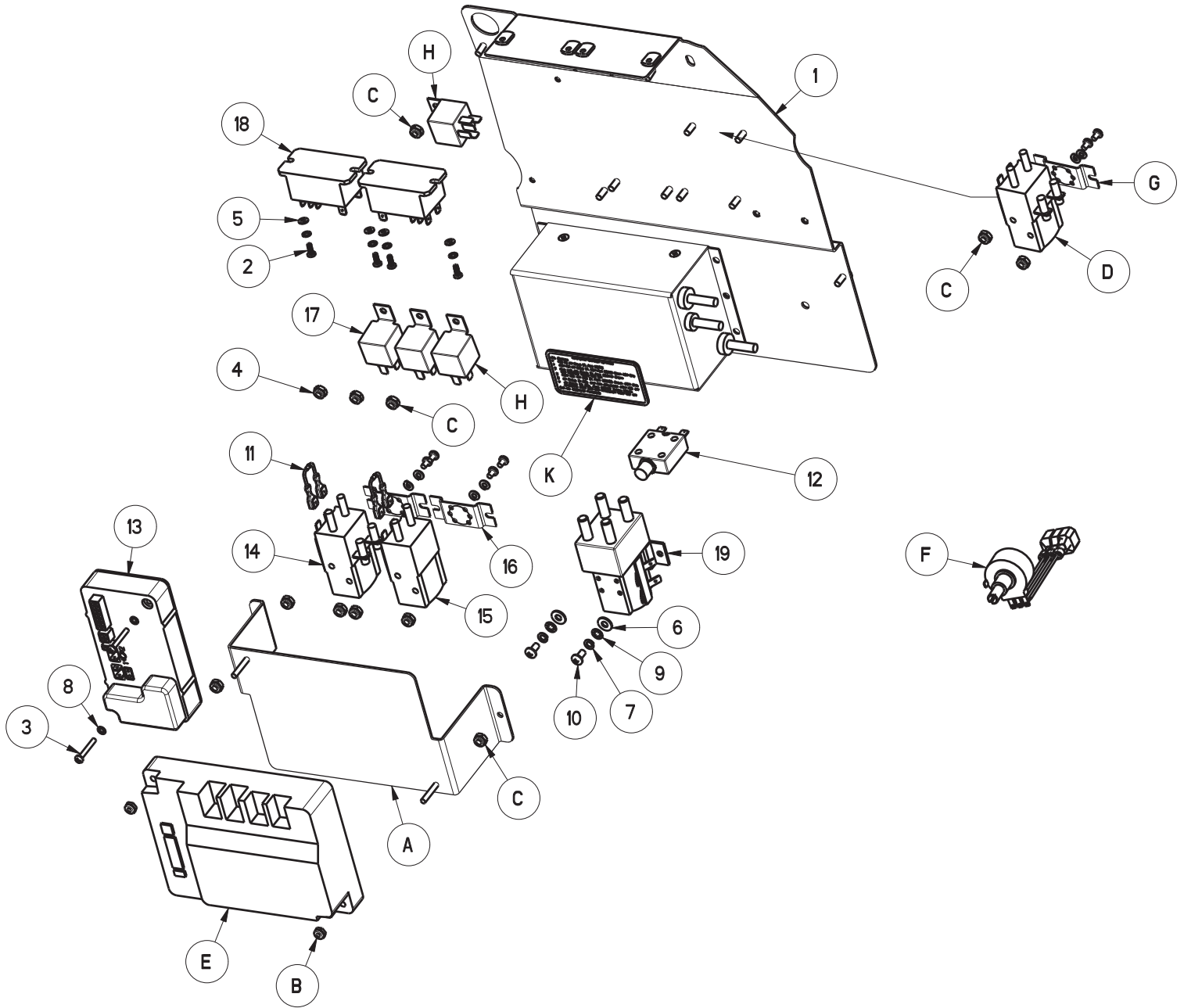
Tank Group BOM (Pg 2 of 2)

| BILL OF MATERIAL - 246576 | | | |
|----------------------------------|-----------------|------------|---|
| ITEM | PART NO. | QTY | DESCRIPTION |
| 38 | 713002 | 3 | SCR-HH 1/4-20 X .75 ZP 5 |
| 39 | 715535 | 1 | DECAL, VAC, DRIVE, MOTOR-POWER |
| 40 | 715536 | 1 | DECAL, BRUSHES L-R |
| 41 | 715978 | 2 | DECAL, MAIN OVAL MAX-RIDE 26, ER V-26 |
| 42 | 740247 | 2 | CIRCUIT BREAKER-30AMP PUSH BUTTON |
| 43 | 740601 | 1 | SWITCH, SEAT, BOLT MOUNT |
| 44 | 742748 | 5 | CIRCUIT BREAKER BOOT |
| 45 | 747349 | 1 | WIRE ASSY, SEAT SWITCH |
| 46 | 747350 | 1 | WIRE ASSY, SEAT SW CONN |
| 47 | 747609 | 1 | CIRCUIT BREAKER-4.0AMP PUSHBUT |
| 48 | 747614 | 1 | INDICATOR, BATTERY CHARGE STATUS |
| 49 | 747689 | 1 | STRAIN RELIEF, CABLE DIA. .181-.312 #3210 |
| 50 | 827666 | 2 | RIVET-POP 1/8 DOME HD, BLK ALUM BODY |
| 51 | 3044112 | 1 | CLAMP - HOSE, DIAM. 2.5" SS |
| 52 | 3303255 | 1 | CLAMP-HOSE 1 3/4 NOM. |
| 53 | 3400089 | 3 | WASHER 1/4 ID .63 OD X .065 THK |
| 54 | 3400383 | 3 | WASHER CONICAL SPRING 1/4 |
| 55 | 3401449 | 11 | SCR-HI/LO SS 10-16X3/4 PAN HD PHL. |
| 56 | 25510512 | 1 | GASKET, RUBBER BLADE, PRESS IN |
| 57 | 97118731 | 1 | FILTER UNIT, SCREENED FLOAT |

| ADDITIONAL ECO MODEL PARTS | | | |
|-----------------------------------|-----------------|------------|--------------------------|
| ITEM | PART NO. | QTY | DESCRIPTION |
| A | 245911 | 1 | COVER, ELEC BOX, ECO 26" |
| F | 740221 | 2 | CIRCUIT BREAKER, 30 AMP |

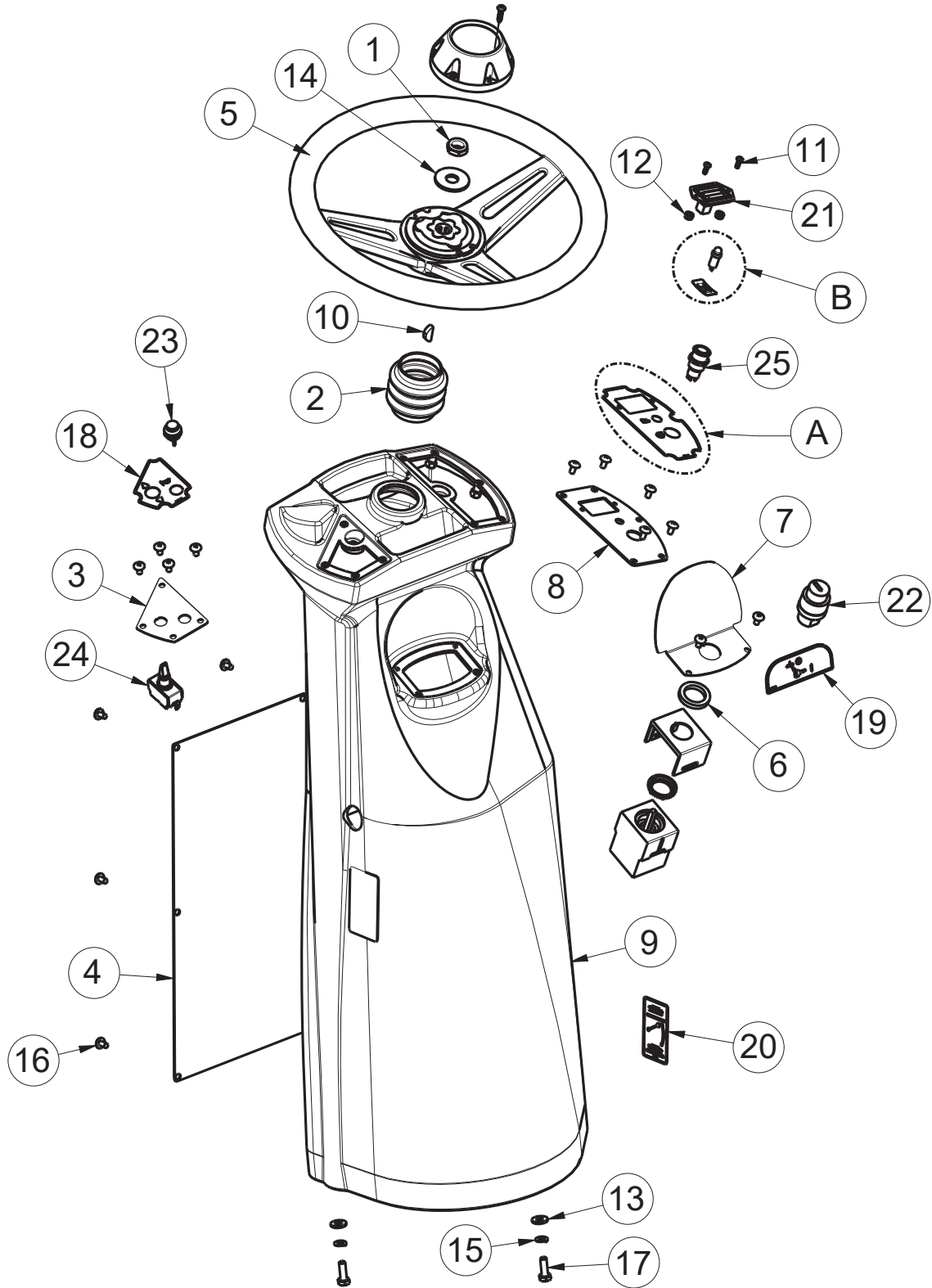
| ADDITIONAL SPORT MODEL PARTS | | | |
|-------------------------------------|-----------------|------------|--|
| ITEM | PART NO. | QTY | DESCRIPTION |
| A | 245910 | 1 | COVER, ELEC BOX, SPORT 26" |
| B | 715533 | 1 | DECAL, 2 POSITION SWITCH, BRUSH MOTOR |
| D | 748904 | 2 | BREAKER CIRCUIT 40 AMP 10-32 SCREWS 90 D |
| E | 747717 | 1 | KEYSWITCH ASSY, 2 POS, ON/OFF |

Electrical Panel Assembly



Rev F

| BILL OF MATERIAL - 246167 | | | |
|------------------------------|----------|-----|----------------------------------|
| ITEM | PART NO. | QTY | DESCRIPTION |
| 1 | 245851 | 1 | PANEL, ELEC CHASSIS, 20/26 |
| 2 | 710203 | 4 | SCR-MC 6-32 X .37 ST PL PAN HD |
| 3 | 710307 | 2 | SCR-MC 6-32 X 1.0 ST PL PAN HD |
| 4 | 711350 | 8 | NUT-NYLOC 10-32 |
| 5 | 711501 | 4 | WASHER-FLAT #6 X .375 ZP |
| 6 | 711503 | 2 | WASHER-FLAT #10 X .50 ZP |
| 7 | 711543 | 2 | WASHER-LOCK #10 SPLIT ZP |
| 8 | 711551 | 6 | WASHER-INT LOCK #6 |
| 9 | 711553 | 2 | WASHER-INT TOOTH LOCK #10 ZP |
| 10 | 712810 | 2 | SCR-MC 10-24 X .37 ST PL |
| 11 | 740482 | 2 | DIODE ASY, 1N4007 W/PIGGY |
| 12 | 740703 | 1 | CIRCUIT BREAKER, 1 AMP |
| 13 | 747389 | 1 | I-DRIVE,24V 70A PM MOTOR CONTROL |
| 14 | 747615 | 1 | RELAY, 24VDC 2 POLE NO/NC 80A |
| 15 | 747616 | 1 | RELAY, 24VDC 1 POLE NO 80A |
| 16 | 747619 | 2 | BRACKET, RELAY 747615 & 747616 |
| 17 | 748511 | 2 | RELAY, SPDT, MAX RIDE |
| 18 | 748524 | 2 | RELAY, DPDT, 40A |
| 19 | 90331026 | 1 | RELAY, 24VDC 2 POLE 100A (HAKO) |
| ADDITIONAL ECO MODEL PARTS | | | |
| ITEM | PART NO. | QTY | DESCRIPTION |
| C | 711350 | 3 | NUT-NYLOC 10-32 ZP |
| D | 747615 | 1 | RELAY, 24VDC 2 POLE NO/NC 80A |
| G | 747619 | 1 | BRACKET, RELAY 747615 & 747616 |
| H | 748511 | 1 | RELAY, SPDT, MAX RIDE |
| G | 747252 | 1 | MR26 ECO ELECT GROUP GEN 2 |
| K | 957936 | 1 | LABEL, FOR CHARGERS 957764 |
| ADDITIONAL SPORT MODEL PARTS | | | |
| ITEM | PART NO. | QTY | DESCRIPTION |
| A | 245901 | 1 | BRACKET - MTG, I-DRIVE SPORT |
| B | 711026 | 2 | NUT-NYLOC 8-32 SS |
| C | 711350 | 6 | NUT-NYLOC 10-32 ZP |
| D | 747615 | 1 | RELAY, 24VDC 2 POLE NO/NC 80A |
| E | 747359 | 1 | I-DRIVE, 180 AMP |
| F | 747388 | 1 | POTENTIOMETER WIRE ASSY |
| G | 747619 | 1 | BRACKET, RELAY 747615 & 747616 |
| H | 748511 | 2 | RELAY, SPDT, MAX RIDE |
| J | 747254 | 1 | MR26 SPORT ELECT GROUP GEN 2 |
| K | 957936 | 1 | LABEL, FOR CHARGERS 957764 |



Rev C

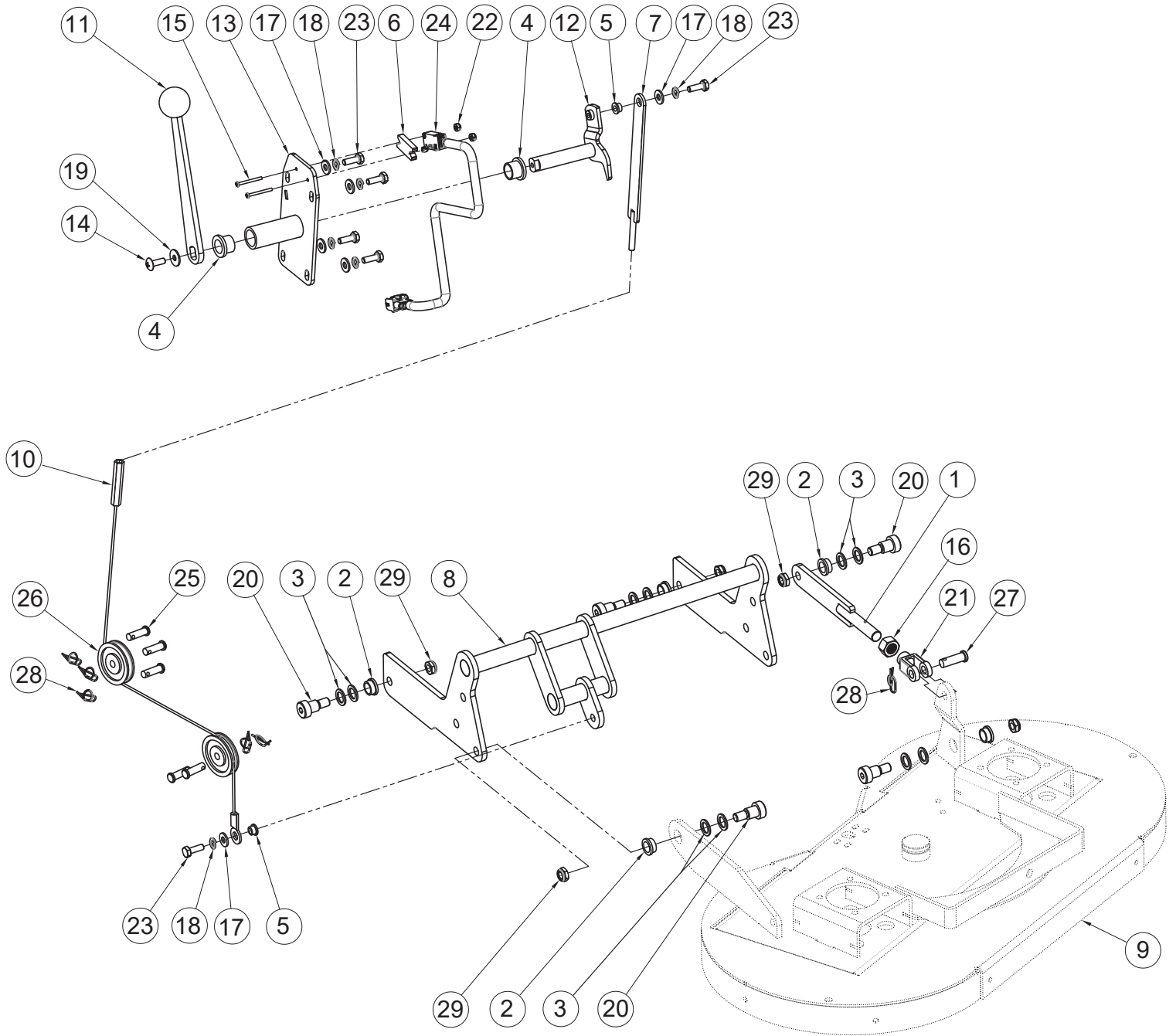
Steering Column Group BOM

| BILL OF MATERIAL - 246166 | | | |
|-------------------------------------|-----------------|------------|------------------------------------|
| ITEM | PART NO. | QTY | DESCRIPTION |
| 1 | 368-816 | 1 | HALF NUT NYLOC 1/2-20 |
| 2 | 241224 | 1 | BOOT - SHAFT, SCV 2426 |
| 3 | 245028 | 1 | PANEL-CONTROL, LH FWD-REV SELECTOR |
| 4 | 245156 | 1 | PANEL-FRONT STEERING CONSOLE |
| 5 | 245345 | 1 | STEERING WHEEL |
| 6 | 245802 | 1 | SPACER, PVC, KEY SWITCH |
| 7 | 245840 | 1 | PANEL, CENTER, KEY SWITCH |
| 8 | 245846 | 1 | PANEL-CONTROL RH, FUNCTION SELECT |
| 9 | 246090 | 1 | CONSOLE, STEERING, ER20/26 -V |
| 10 | 383277 | 1 | KEY WOODRUFF 3/16 X 3/4 |
| 11 | 710203 | 2 | SCR-MC 6-32 X .37 ST PL PAN HD |
| 12 | 711371 | 2 | NUT-NYLOC 6-32 ZP |
| 13 | 711505 | 2 | WASHER-FLAT 1/4 ZP |
| 14 | 711510 | 1 | WSR FLAT .5 X 1.37 X .100 |
| 15 | 711544 | 2 | WSR-HELICAL 1/4 |
| 16 | 712540 | 17 | SCR-MC TR HD 10-24 X .37 SS |
| 17 | 713002 | 2 | SCR-HH 1/4-20 X .75 ZP 5 |
| 18 | 715762 | 1 | DECAL-FWD-REV SELECTOR |
| 19 | 715778 | 1 | DECAL, CENTER PANEL, KEY SWITCH |
| 20 | 715781 | 1 | DECAL, BRUSH LIFT, 20/26 |
| 21 | 747011 | 1 | BATTERY GAUGE, TRUCHARGE |
| 22 | 747387 | 1 | KEYSWITCH ASSY |
| 23 | 748047 | 1 | SWITCH, PUSH BUTTON (HORN SCV 36V) |
| 24 | 748800 | 1 | SWITCH-TOGGLE G SERIES |
| 25 | 748804 | 1 | SWITCH, PUSH BUTTON, ORANGE LED |
| ADDITIONAL ECO MODEL PARTS | | | |
| A | 715779 | 1 | DECAL, FUNCTION SELECTOR, ECO |
| ADDITIONAL SPORT MODEL PARTS | | | |
| A | 715780 | 1 | DECAL, FUNCTION SELECTOR, SPORT |
| B | 747718 | 1 | LAMP ASSY, LED AMBER, 24V |
| | 747718-2 | | CLIP, TINNERMAN |

Scrub Head Group BOM

| BILL OF MATERIAL - 246573 | | | |
|---------------------------|----------|-----|---|
| ITEM | PART NO. | QTY | DESCRIPTION |
| 1 | 712 | 1 | PERMABOND-MM115 50ML BLUE |
| 2 | 172510 | 2 | HUB ASSEMBLY, DISC DECK |
| 3 | 241726 | 1 | FTG-TEE 3/8 HB X 3/8 HB X 3/8 HB NYLON |
| 4 | 245339 | 1 | ROLLER- SQUEEGEE |
| 5 | 245412 | 1 | BAR, SQUEEGEE PIVOT |
| 6 | 245468 | 2 | RET RING-EXT .687 BLK OXIDE |
| 7 | 245516 | 2 | SLIDE |
| 8 | 245518 | 7 | FASTENER, PLASTIC TREE |
| 9 | 245519 | 2 | HOSE-NYL REINFORCED 3/8 ID, 4" |
| 10 | 245591 | 2 | SHAFT, BRUSH DRIVE |
| 11 | 245811 | 2 | KEY-6MM X 6MM X .700 ZINC |
| 12 | 245812 | 2 | KEY-6mm X 6mm X 2.625 |
| 13 | 245818-2 | 2 | PAD DRIVER, 13" |
| 14 | 246542 | 1 | WELDMENT, SCRUB HEAD, 26 |
| 15 | 246646 | 1 | SKIRT, SCRUB HEAD, 26 |
| 16 | 246652 | 1 | TUBING, .38 ID X .11 WAL BRA VIN 29.5 IN |
| 17 | 452037 | 1 | CLAMP-CRIMP 170R SS |
| 18 | 600114 | 1 | SPACER, .328 B .498 OD .500 ,SS |
| 19 | 600576 | 1 | RET RING-EXT 1.25 HD |
| 20 | 600933 | 7 | NUT-NYLOC M6-1.00 SS |
| 21 | 711421 | 8 | WASHER-LOCK 1/4 SPLIT, HIGH-COLLAR, SS |
| 22 | 711504 | 3 | WASHER-FLAT 1/4 SS |
| 23 | 711855 | 2 | WASHER-FENDER 3/8 X 1.12 X .10 ZP HARD |
| 24 | 712695 | 1 | NUT-HEX 3/8-16 SS |
| 25 | 717025 | 2 | WASHER-FLAT 13/16 X 1.25 X .08 ZP |
| 26 | 730526 | 2 | WASHER-FENDER M8 X 24 SS |
| 27 | 730844 | 2 | RET RING-EXT .375 SS SELF LOCKING |
| 28 | 730934 | 7 | SCR-HH M6-1.00 X 16 SS FULL THREAD |
| 29 | 770536 | 1 | SCR-BHSCS M8-1.25 X 30 SS |
| 30 | 828062 | 4 | CABLE TIE LARGE |
| 31 | 3337628 | 2 | WASHER FLAT 1.28 ID x 2.00 OD ZP |
| 32 | 3400340 | 1 | NUT-NYLOC 3/8-16 SS |
| 33 | 3402010 | 1 | SCR-HEX 3/8-16 X 1.25 SS |
| 34 | 3402054 | 8 | SCR-SHCS M6-1.0 X 12 ZP |
| 35 | 11717203 | 2 | BLT-HH FLG M8X1.25X20 PRECOTE, ZD 10.9 |
| 36 | 12040259 | 1 | NUT-NYLOC M8 X 1.25 SS |
| 37 | 90311663 | 2 | FITTING, WATER NOZZLE W/ MOUNT HOLES |
| 38 | 245808 | 1 | GEAR - MOTOR, BRUSH, 24VDC 400W, AMER (ECO MODELS) |
| | 245231 | | GEAR-MOTOR, BRUSH, 24VDC 600W, AMER (SPORT MODELS) |

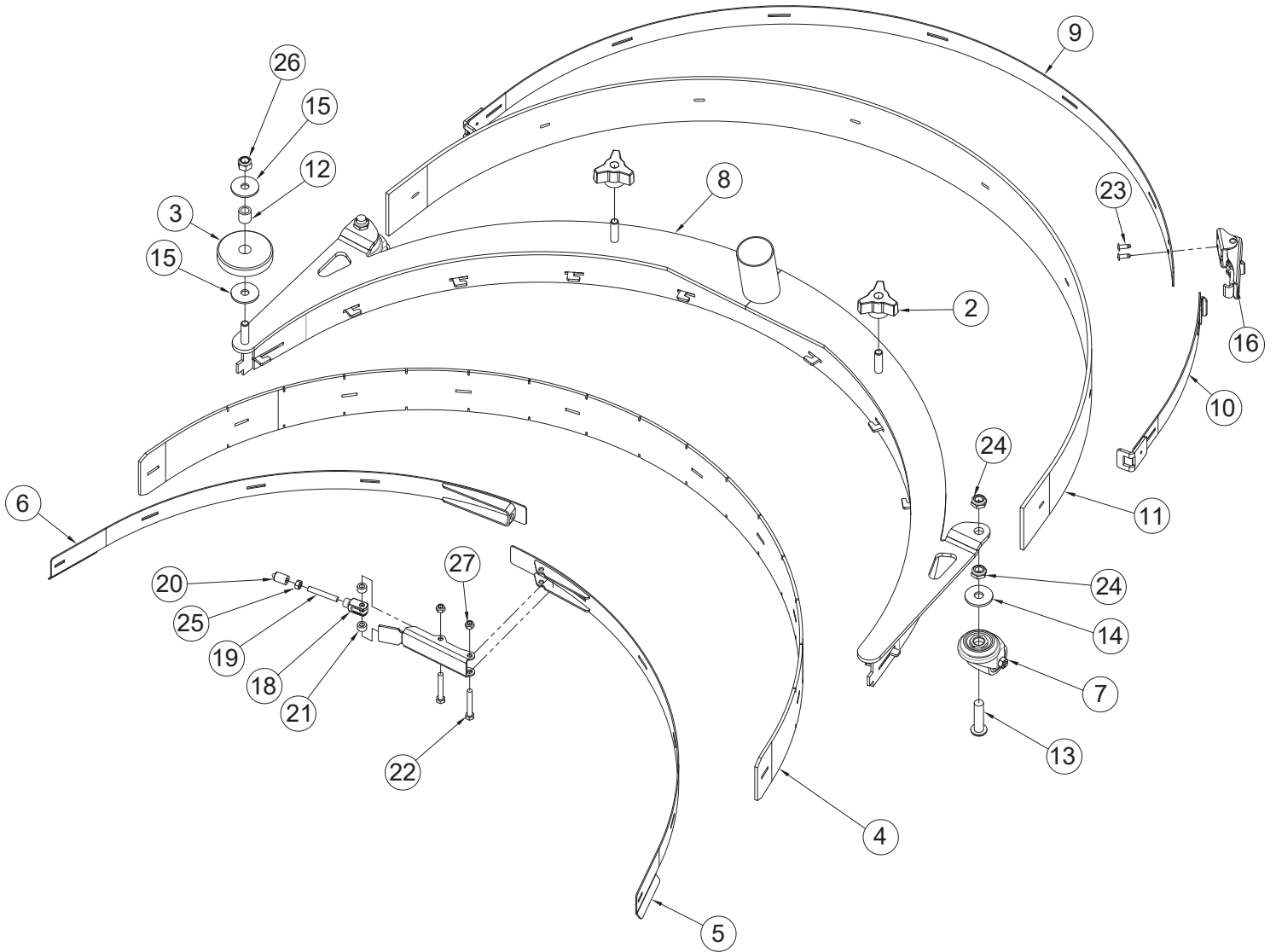
Scrub Head Lift Group



Rev A

Scrub Head Lift Group BOM

| BILL OF MATERIAL - 246574 | | | |
|---------------------------|-----------|-----|---|
| ITEM | PART NO. | QTY | DESCRIPTION |
| 1 | 245575 | 1 | WELDMENT, DECK ADJ LINK 26 |
| 2 | 245806 | 5 | BUSHING-FLG, .50 x .62 x .31 LG OILITE |
| 3 | 246064 | 10 | WASHER-FLAT 1/2 X .75 X .062 NYLON |
| 4 | 246078 | 2 | BUSHING, FLANGED 5/8" SHAFT DIA. |
| 5 | 246079 | 2 | BUSHING, FLANGED 1/4" SHAFT DIA. |
| 6 | 246089 | 1 | BRACKET, SWITCH |
| 7 | 246097 | 1 | WELD, DECK LIFT END |
| 8 | 246541 | 1 | WELDMENT, TRAILING ARM, 26 |
| 9 | 246542 | 1 | WELDMENT, SCRUB HEAD, 26 |
| 10 | 246548 | 1 | CABLE, 29.25 |
| 11 | 246639 | 1 | WELDMENT, HEAD LIFT, HANDLE |
| 12 | 246640 | 1 | WELDMENT, HEAD LIFT SHAFT |
| 13 | 246647 | 1 | WELDMENT, HEAD LIFT |
| 14 | 710180 | 1 | SCR-THMS 1/4-20 X .75 ZP |
| 15 | 710495 | 2 | SCR-PHMS 4-40 X 1.25 ZP |
| 16 | 711337 | 1 | NUT-HEX 1/2-20 ZP |
| 17 | 711505 | 6 | WASHER-FLAT 1/4 ZP |
| 18 | 711544 | 6 | WASHER-LOCK 1/4 SPLIT ZP |
| 19 | 711575 | 1 | WASHER-FLAT 1/4 X .75 X .06 ZP |
| 20 | 712099PLT | 5 | BLT-SHOULDER 1/2 X 1/2 LG X 3/8-16 |
| 21 | 712265 | 1 | CLEVIS-YOKE, 1/2-20 WITH .375 PIN |
| 22 | 712348 | 2 | NUT-NYLOC 4-40 SS |
| 23 | 713002 | 6 | SCR-HH 1/4-20 X .75 ZP 5 |
| 24 | 747603-2 | 1 | SWITCH ASY, MICRO ROLLER W/PACK/CONDUIT |
| 25 | 881002 | 5 | PIN-CLEVIS 5/16 X 1.00 ZINC |
| 26 | 3300368 | 2 | PULLEY-PLASTIC 2" x .25" GROOVE |
| 27 | 3400117 | 1 | PIN-CLEVIS 3/8 x 1.125 ZP |
| 28 | 3400125 | 6 | RING-RUE 3/8 |
| 29 | 3401028 | 5 | NUT-JAM 3/8-16 ZP NYLOC |

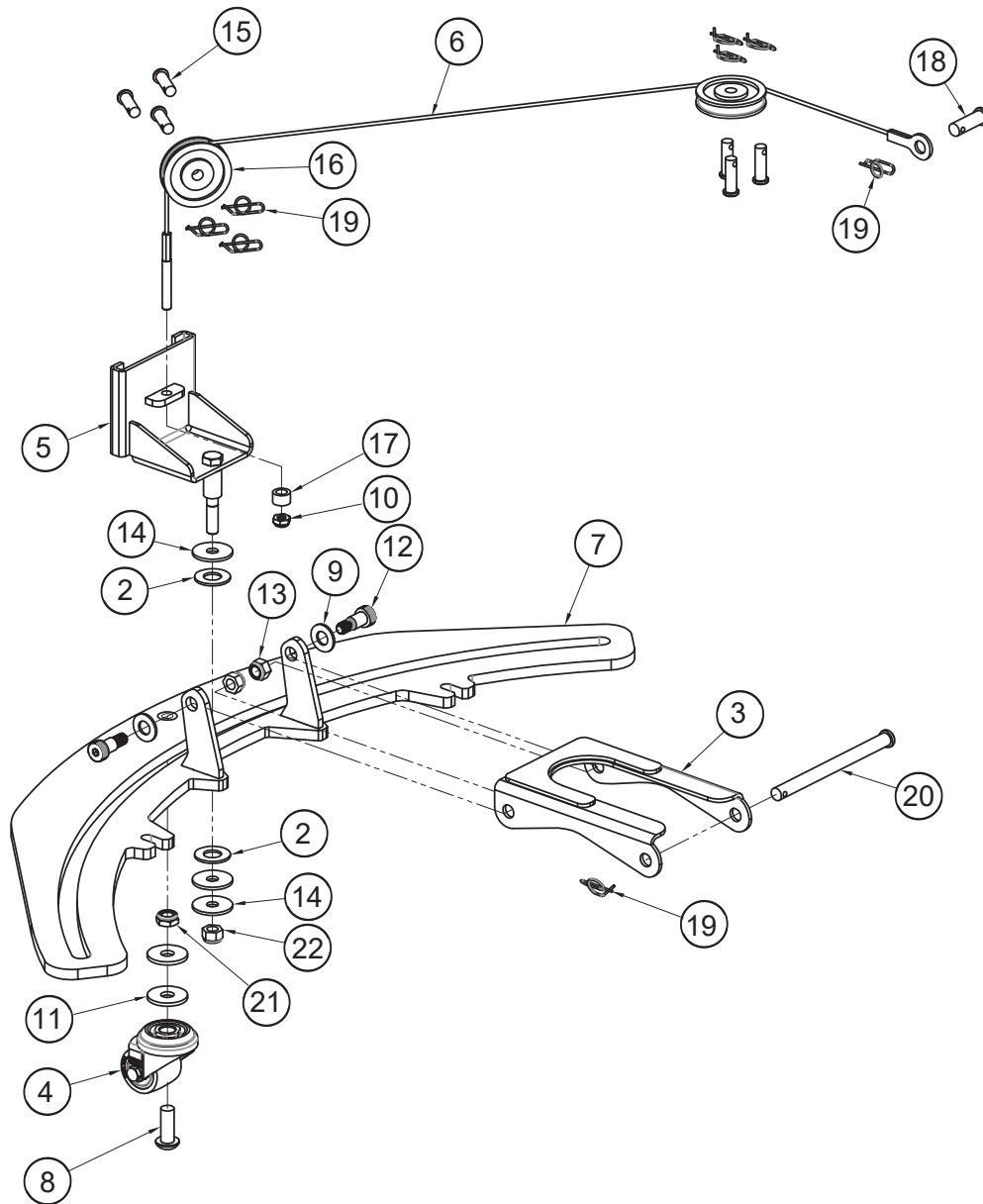


Rev A

Squeegee Group BOM

| BILL OF MATERIAL - 246572 | | | |
|---------------------------|----------|-----|--|
| ITEM | PART NO. | QTY | DESCRIPTION |
| 1 | 712 | 1 | PERMABOND-MM115 50ML BLUE |
| 2 | 210118 | 2 | KNOB-3 SIDED 5/16 NYLOC |
| 3 | 245339 | 1 | ROLLER- SQUEEGEE |
| 4 | 245392-1 | 1 | SQUEEGEE BLADE, 26 INNER, PRIMOTHANE |
| 5 | 245399 | 1 | WELDMENT, INNER BAND A 26 |
| 6 | 245402 | 1 | WELDMENT, INNER BAND B 26 |
| 7 | 245563 | 2 | CASTER |
| 8 | 246544 | 1 | WELDMENT, SQUEEGEE, 26 |
| 9 | 246546 | 1 | WELDMENT, OUTER BAND LONG |
| 10 | 246547 | 1 | WELDMENT, OUTER BAND SHORT |
| 11 | 246632-1 | 1 | SQUEEGEE BLADE, 26 OUTER, PRIMOTHANE |
| 12 | 600114 | 1 | SPACER, .328 B .498 OD .500 ,SS |
| 13 | 710987 | 2 | SCR-BHSCS 3/8-16 X 1.50 ZP |
| 14 | 711855 | 2 | WASHER-FENDER 3/8 X 1.12 X .10 ZP HARD |
| 15 | 730526 | 2 | WASHER-FENDER M8 X 24 SS |
| 16 | 730652 | 1 | LATCH, UNDER CENTER |
| 17 | 730780 | 1 | LATCH, BODY SS |
| 18 | 730781 | 1 | CLEVIS, M5 - 0.8 |
| 19 | 730782 | 1 | ROD, M5 - 0.8 |
| 20 | 730783 | 1 | ROD, NOSE |
| 21 | 730784 | 2 | SPACER, .203 B .375 OD .210 T |
| 22 | 730802 | 2 | SCR-HH M5-0.8 X 35 SS FULL THREAD |
| 23 | 731293 | 2 | RIVET-BLIND 5/32 .187 GRIP SS |
| 24 | 3401028 | 4 | NUT-JAM 3/8-16 ZP NYLOC |
| 25 | 12022430 | 1 | NUT-HEX M5 X 0.8 316SS DIN 934 |
| 26 | 12040259 | 1 | NUT-NYLOC M8 X 1.25 SS |
| 27 | 12040283 | 2 | NUT-NYLOC M5 X 0.8 304SS DIN985 |

Squeegee Lift Group



Rev A

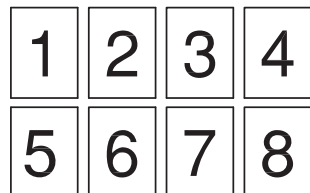
Squeegee Lift Group BOM

| BILL OF MATERIAL - 246571 | | | |
|---------------------------|----------|-----|--|
| ITEM | PART NO. | QTY | DESCRIPTION |
| 1 | 245309 | 1 | SPACER, NYLON, .344 B .500 OD .813 T |
| 2 | 245310 | 2 | WASHER, NYLON, .510 B 1.00 OD .062 T |
| 3 | 245377 | 1 | LINK, SQUEEGEE PIVOT 26" |
| 4 | 245563 | 1 | CASTER |
| 5 | 246545 | 1 | WELDMENT, SLIDER |
| 6 | 246630 | 1 | CABLE, 27.25 |
| 7 | 246633 | 1 | WELDMENT, SQU MNT, 26 |
| 8 | 710986 | 1 | SCR-BHSCS 3/8-16 X 1.00 ZP |
| 9 | 711515 | 2 | WASHER-FLAT 3/8 X .812 X .0625 ZP |
| 10 | 711688 | 1 | NUT-JAM 1/4-20 NYLOC SS |
| 11 | 711855 | 2 | WASHER-FENDER 3/8 X 1.12 X .10 ZP HARD |
| 12 | 712165 | 2 | BLT-SHLDR 3/8 X.50 LX5/16-18 GR18-8 SS |
| 13 | 712683 | 2 | NUT-NYLOC 5/16-18 SS |
| 14 | 730526 | 3 | WASHER-FENDER M8 X 24 SS |
| 15 | 881002 | 6 | PIN-CLEVIS 5/16 X 1.00 ZINC |
| 16 | 3300368 | 2 | PULLEY-PLASTIC 2" x .25" GROOVE |
| 17 | 3335273 | 1 | SPACER-.32 OD X .499 OD X .31 LG |
| 18 | 3400117 | 1 | PIN-CLEVIS 3/8 x 1.125 ZP |
| 19 | 3400125 | 8 | RING-RUE 3/8 |
| 20 | 3400762 | 1 | PIN-CLEVIS 3/8 X 4.75 ZP |
| 21 | 3401028 | 1 | NUT-JAM 3/8-16 ZP NYLOC |
| 22 | 12040259 | 1 | NUT-NYLOC M8 X 1.25 SS |

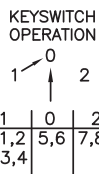
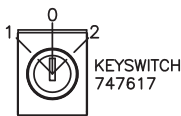
Wiring Diagrams - ECO Models

1

PAGE LAYOUT

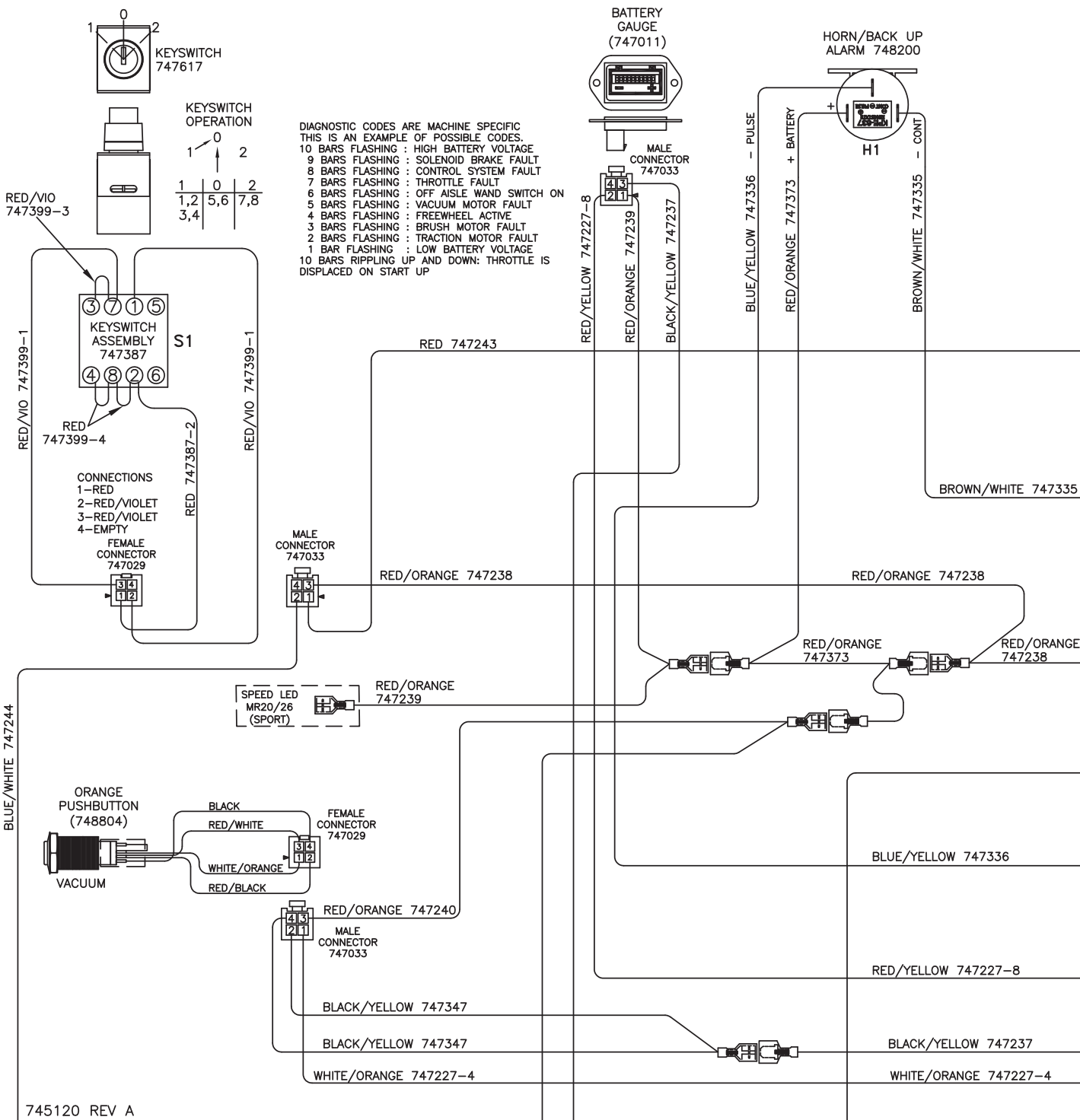
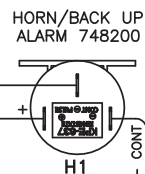
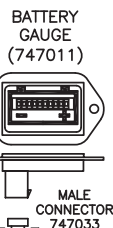


PAGES GO TOGETHER AS SHOWN TO SEE THE ENTIRE SCHEMATIC AS ONE.



DIAGNOSTIC CODES ARE MACHINE SPECIFIC THIS IS AN EXAMPLE OF POSSIBLE CODES.

- 10 BARS FLASHING : HIGH BATTERY VOLTAGE
- 9 BARS FLASHING : SOLENOID BRAKE FAULT
- 8 BARS FLASHING : CONTROL SYSTEM FAULT
- 7 BARS FLASHING : THROTTLE FAULT
- 6 BARS FLASHING : OFF AISLE WAND SWITCH ON
- 5 BARS FLASHING : VACUUM MOTOR FAULT
- 4 BARS FLASHING : FREEWHEEL ACTIVE
- 3 BARS FLASHING : BRUSH MOTOR FAULT
- 2 BARS FLASHING : TRACTION MOTOR FAULT
- 1 BAR FLASHING : LOW BATTERY VOLTAGE
- 10 BARS RIPPLING UP AND DOWN: THROTTLE IS DISPLACED ON START UP

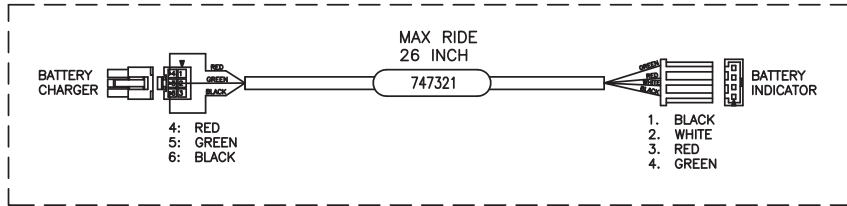


745120 REV A



RELAY NUT COVER
 MAIN RELAY M8 15592033 (4)
 VACUUM RELY M6 15592025 (2)
 BRUSH MOTOR RELAY M6 15592025 (4)

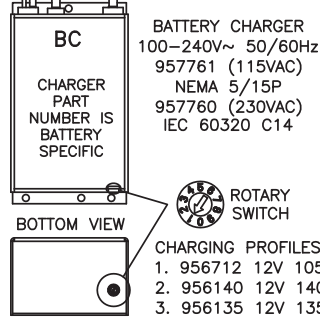
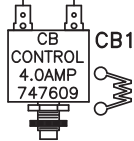
*RELAY TERMINALS ARE METRIC
 MAIN RELAY: M8 TORQUE TO 8-9.5Nm
 VACUUM & BRUSH RELAY: M6 TORQUE TO 3.6-3.9Nm



CHARGER STATUS INDICATOR 747614 CSI

120VAC 60Hz or 230VAC 50Hz (different plug) CORD 748680CE 748680 (UK)

CHARGER 957760 IEC60320 C14



RED 747243

BLACK 747313

BLACK 747313

BLACK 747637-2

RED 747637-1

RED 747330

RED 747328

RED 747305

MAIN RELAY 90331026

GREY/BLACK 747356

BLACK 747234

BROWN/WHITE 747335

RED/ORANGE 747238

BLACK 747315-2

BLACK 747322

P/O BLACK 747234

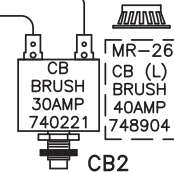
RED 747305

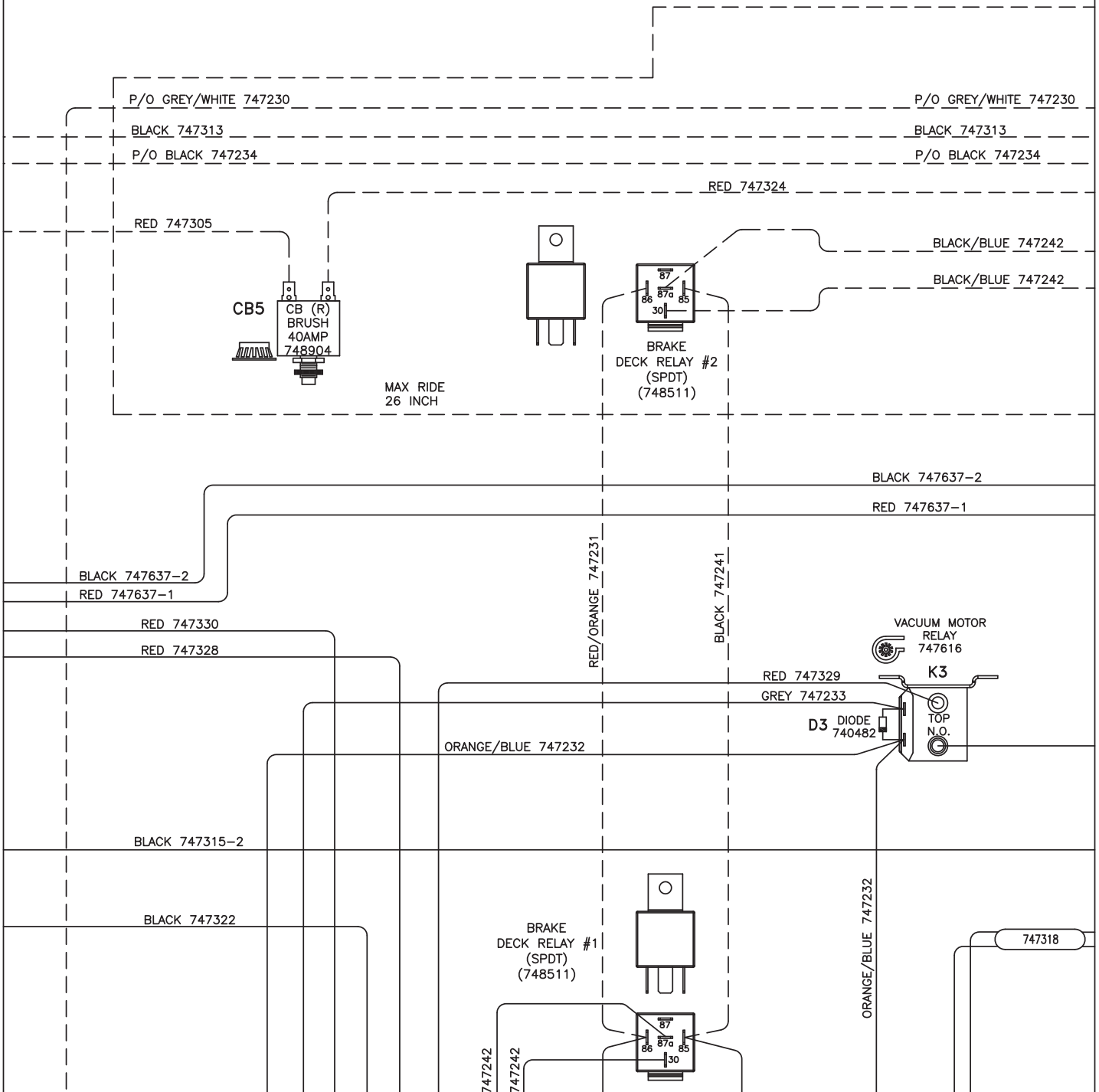
BLACK 747241

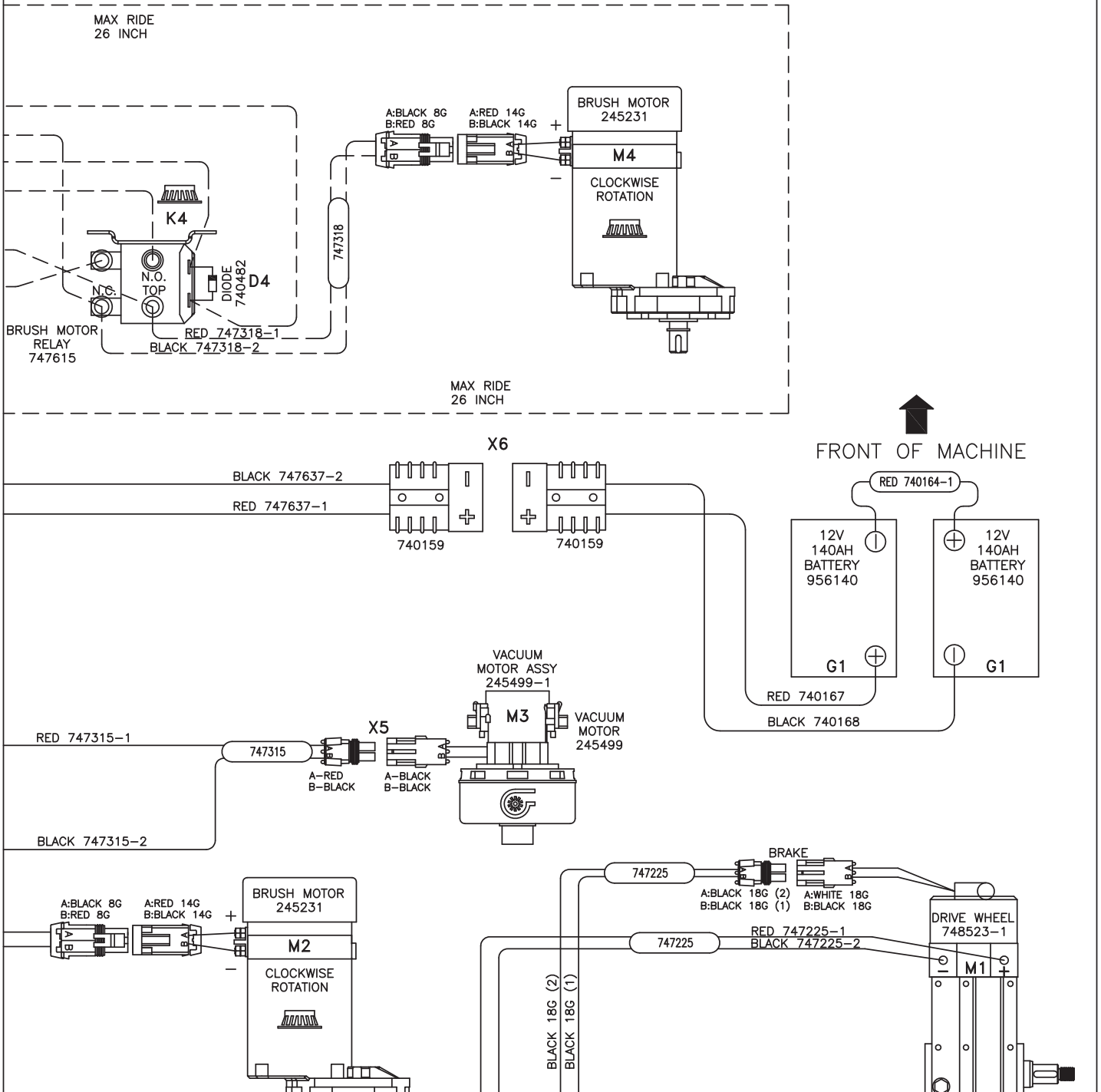
RED/ORANGE 747238

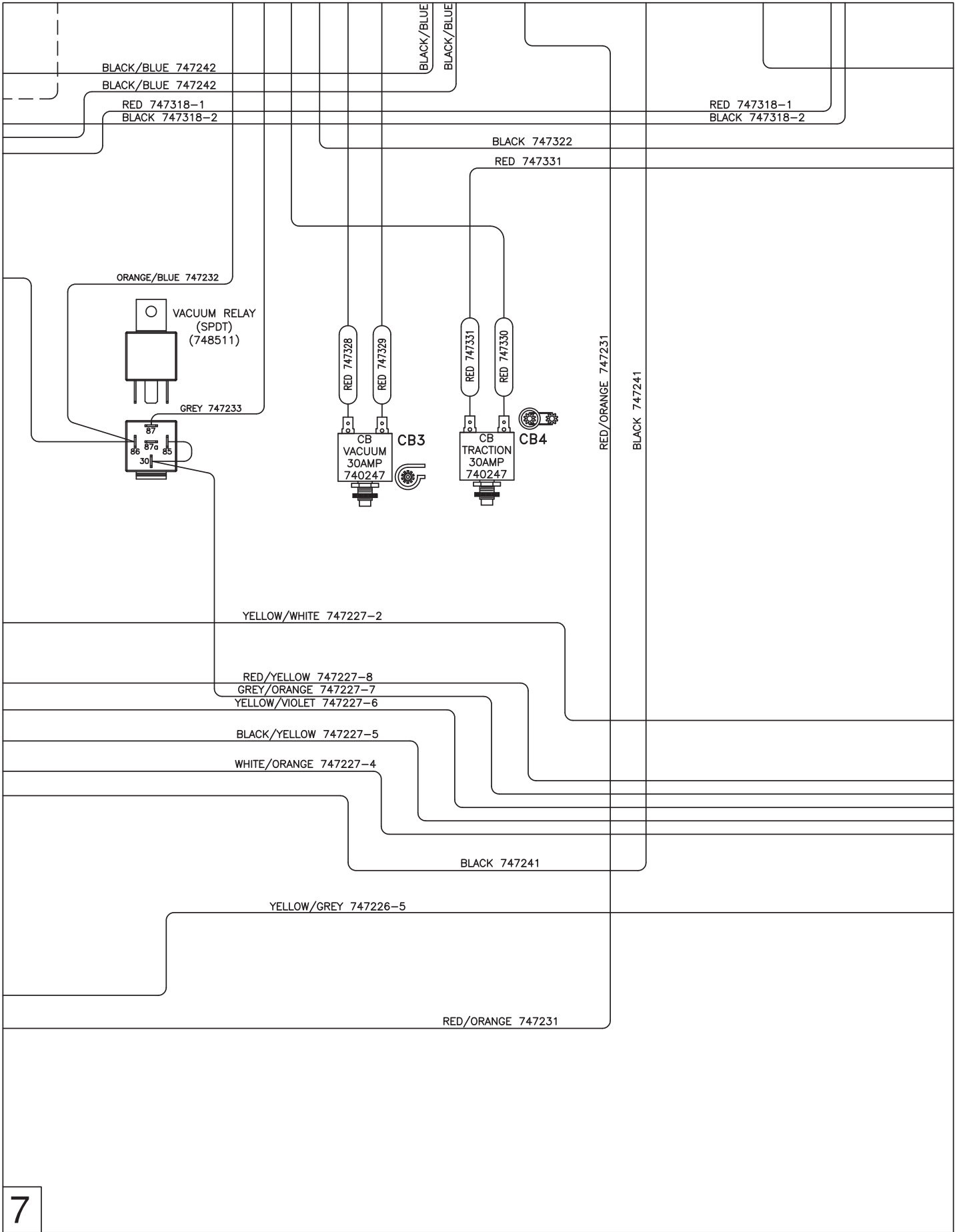
BLACK 747313

BRUSH CONT MR-26

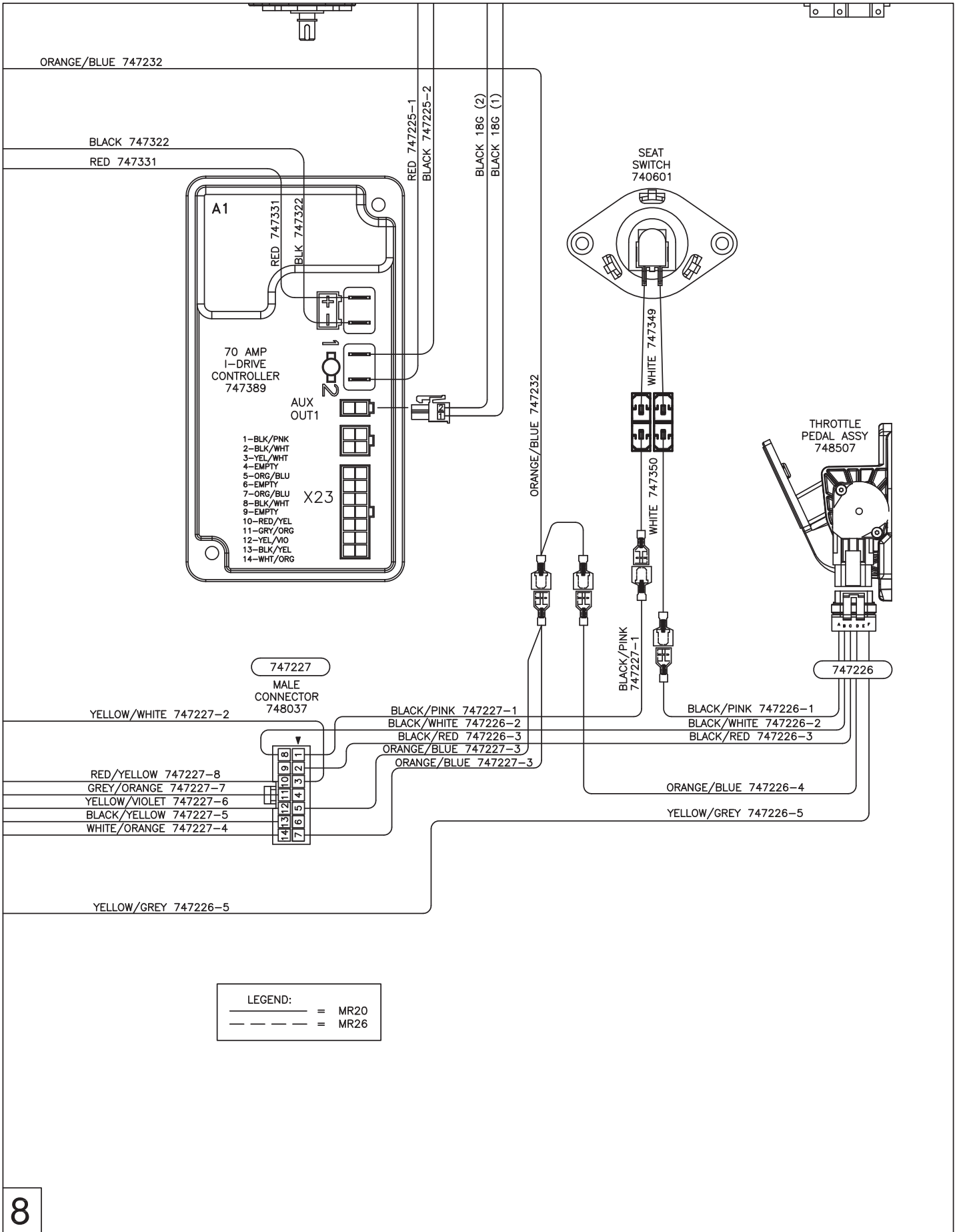






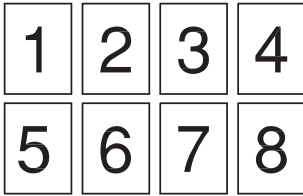


7

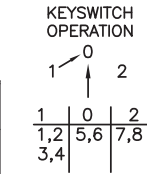
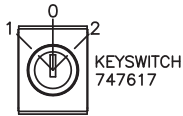


1

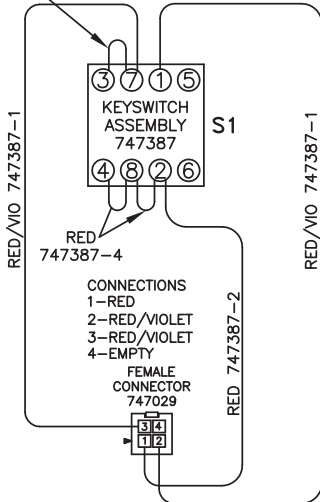
PAGE LAYOUT



PAGES GO TOGETHER AS SHOWN TO SEE THE ENTIRE SCHEMATIC AS ONE.

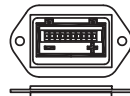


RED/VIO 747387-3

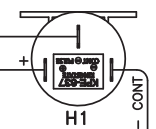


- DIAGNOSTIC CODES ARE MACHINE SPECIFIC
THIS IS AN EXAMPLE OF POSSIBLE CODES.
- 10 BARS FLASHING : HIGH BATTERY VOLTAGE
 - 9 BARS FLASHING : SOLENOID BRAKE FAULT
 - 8 BARS FLASHING : CONTROL SYSTEM FAULT
 - 7 BARS FLASHING : THROTTLE FAULT
 - 6 BARS FLASHING : OFF AISLE WAND SWITCH ON
 - 5 BARS FLASHING : VACUUM MOTOR FAULT
 - 4 BARS FLASHING : FREEWHEEL ACTIVE
 - 3 BARS FLASHING : BRUSH MOTOR FAULT
 - 2 BARS FLASHING : TRACTION MOTOR FAULT
 - 1 BAR FLASHING : LOW BATTERY VOLTAGE
 - 10 BARS RIPPLING UP AND DOWN: THROTTLE IS DISPLACED ON START UP

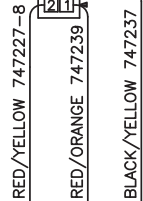
BATTERY GAUGE (747011)



HORN/BACK UP ALARM 748200



MALE CONNECTOR 747033

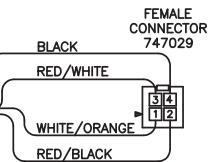
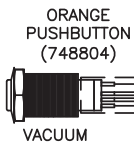


RED 747243

RED/ORANGE 747238

RED/ORANGE 747373

BLUE/WHITE 747244



MALE CONNECTOR 747033

RED/ORANGE 747240

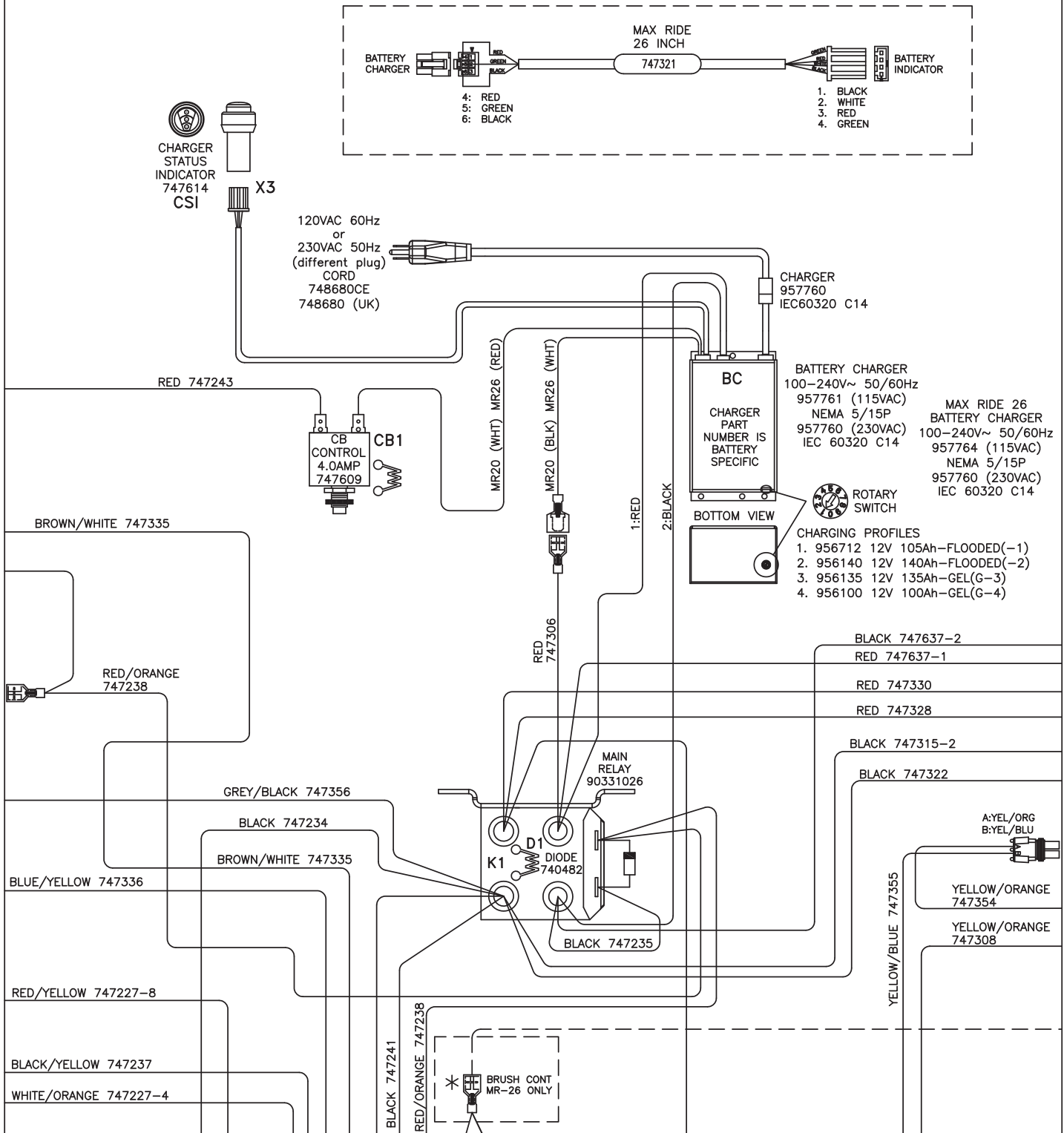
BLACK/YELLOW 747347

BLACK/YELLOW 747347

WHITE/ORANGE 747227-4

BLUE/WHITE 747244

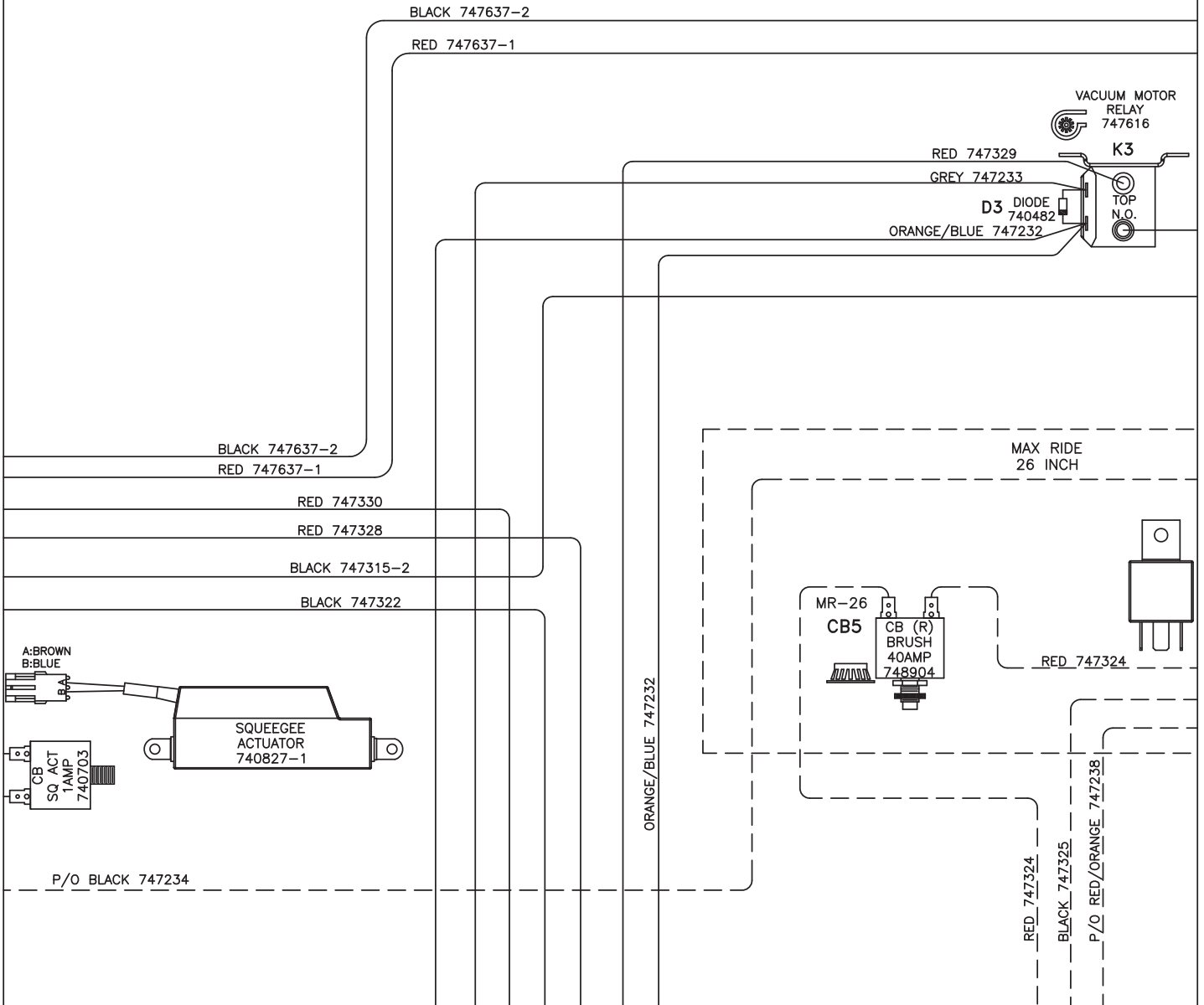
745121 REV A

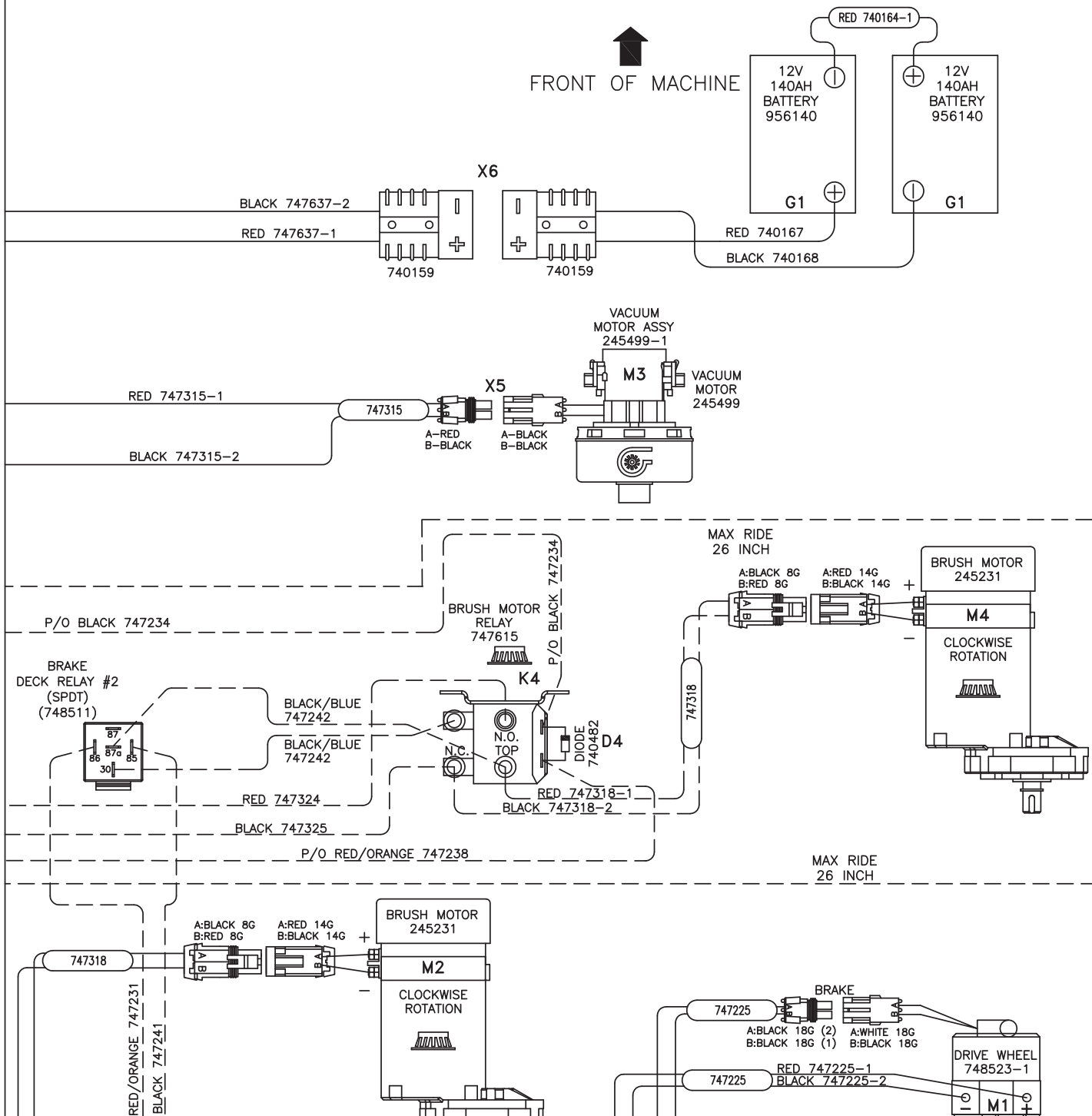


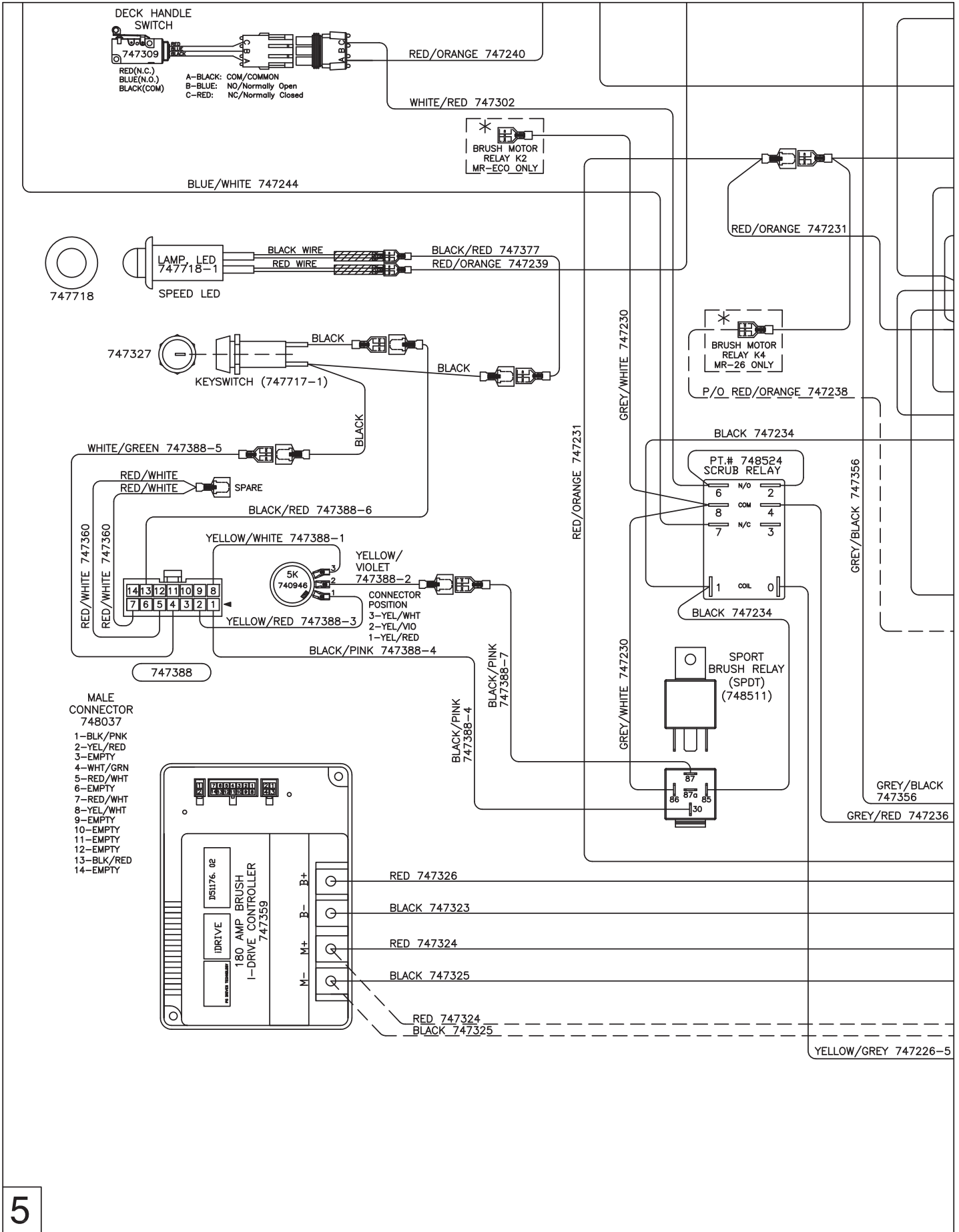


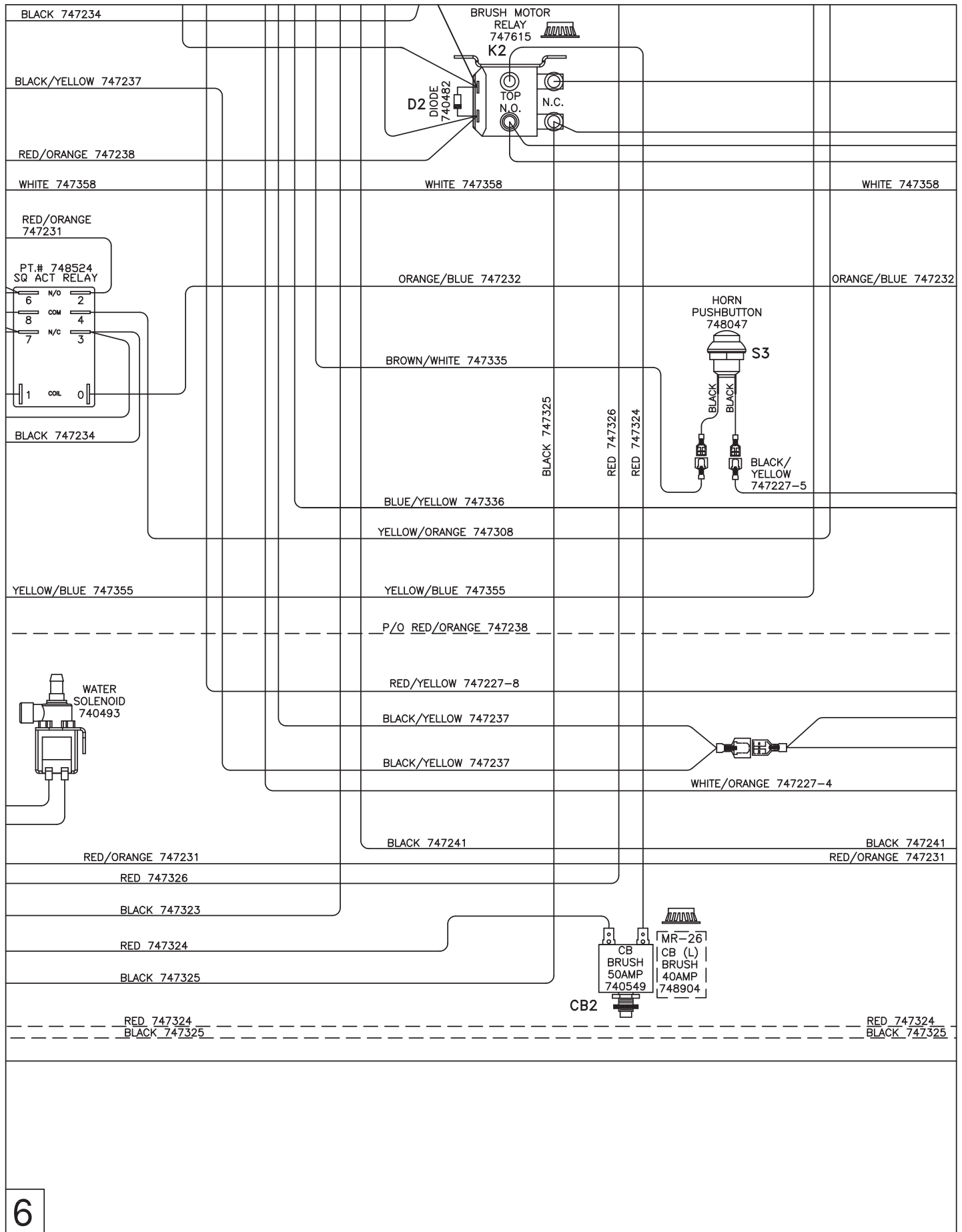
RELAY NUT COVER
 MAIN RELAY M8 15592033 (4)
 VACUUM RELY M6 15592025 (2)
 BRUSH MOTOR RELAY M6 15592025 (4)

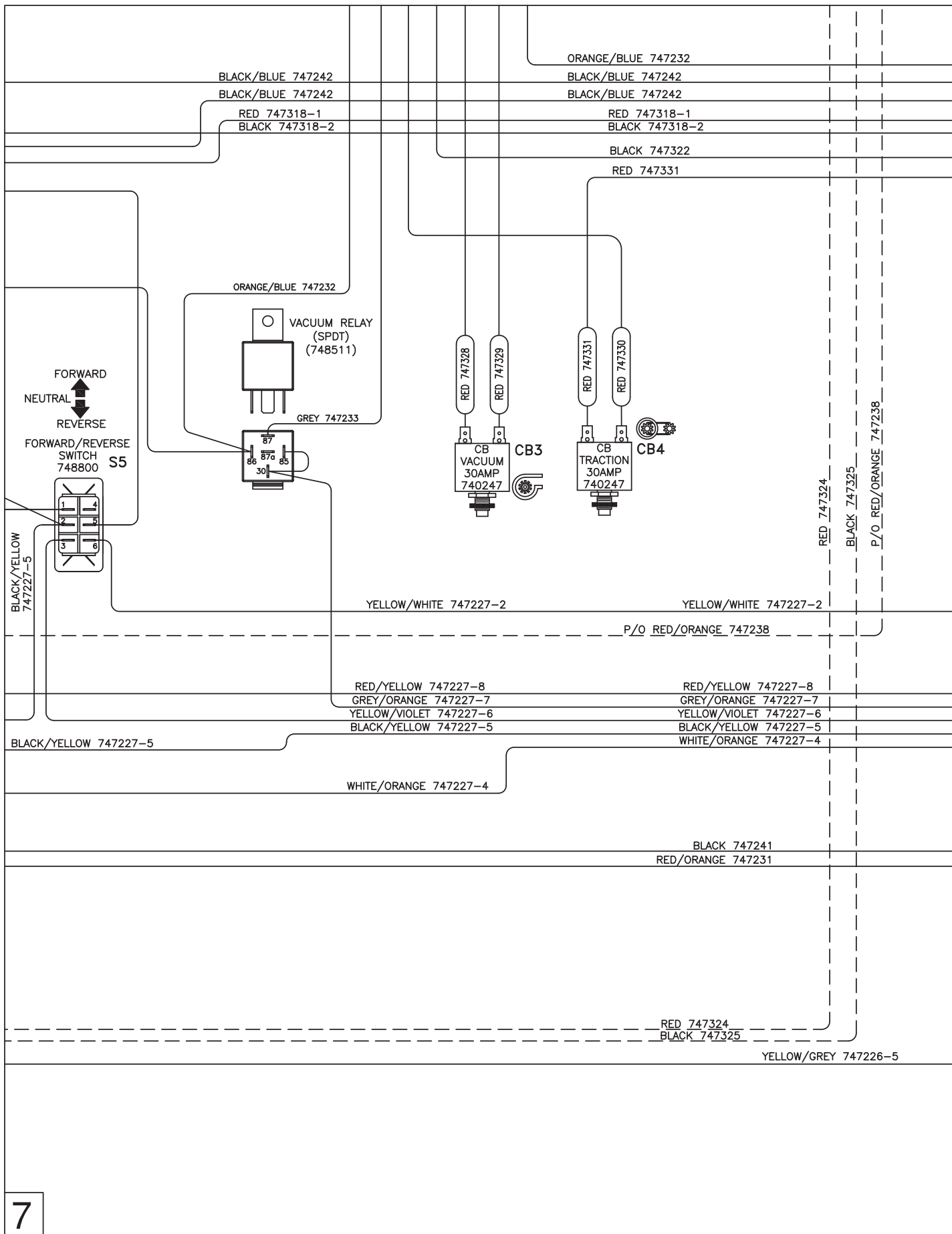
*RELAY TERMINALS ARE METRIC
 MAIN RELAY: M8 TORQUE TO 8-9.5Nm
 VACUUM & BRUSH RELAY:M6 TORQUE TO 3.6-3.9Nm

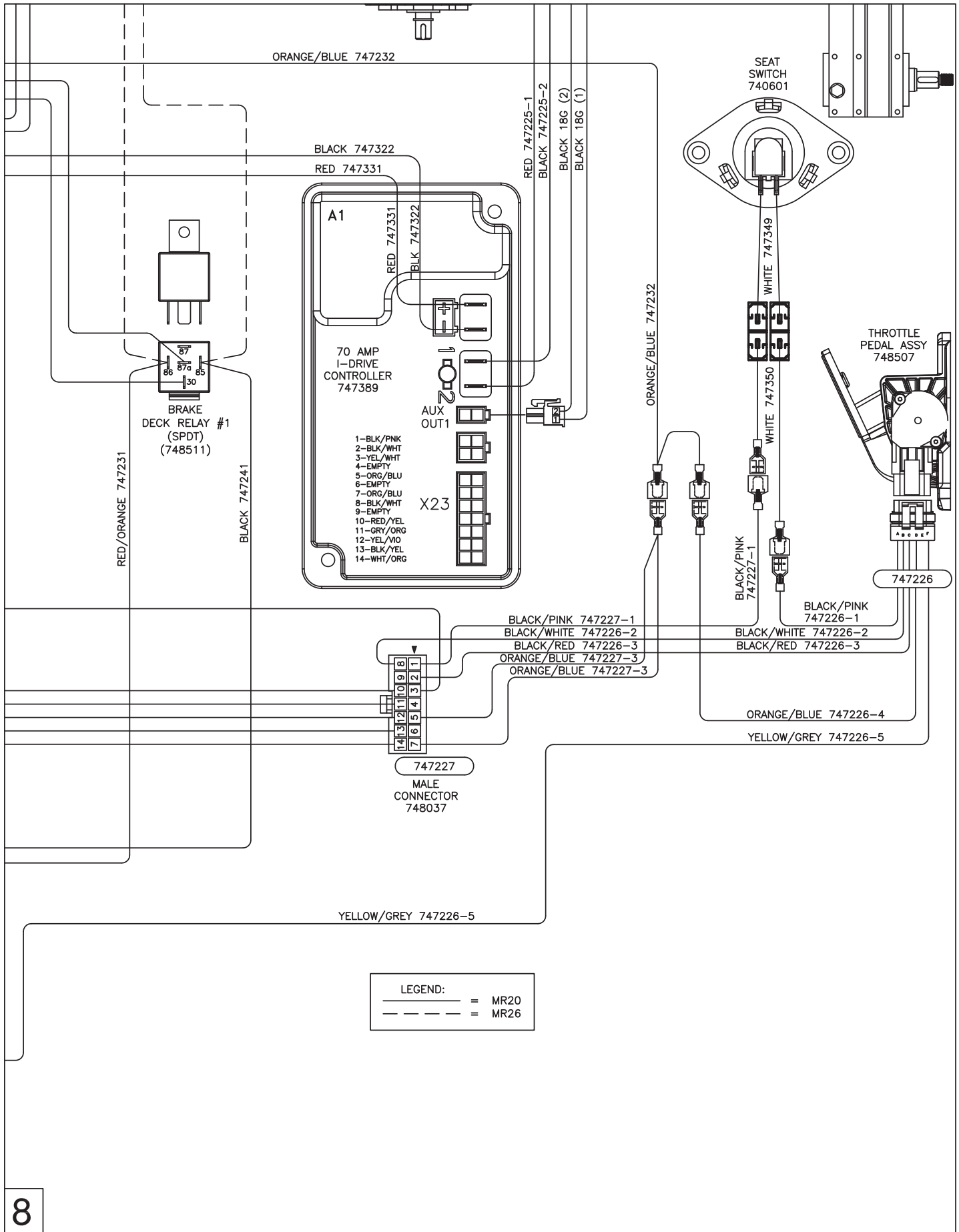












Minuteman International Made Simple Commercial Limited Warranty

REVISION P EFFECTIVE 5/1/2017

Minuteman International, Inc. warrants to the original purchaser/user that the product is free from defects in workmanship and materials under normal use. Minuteman will, at its option, repair or replace without charge, parts that fail under normal use and service when operated and maintained in accordance with the applicable operation and instruction manuals. All warranty claims must be submitted through and approved by factory authorized repair stations.

This warranty does not apply to normal wear, or to items whose life is dependent on their use and care, such as belts, cords, switches, hoses, rubber parts, brushes, electrical motor components or adjustments. Parts manufactured by Minuteman are covered by and subject to the warranties and/or guarantees of their manufacturers. Please contact Minuteman for procedures in warranty claims against these manufacturers.

Special warning to purchaser -- Use of replacement filters and/or pre-filters not manufactured by Minuteman or its designated licensees, will void all warranties expressed or implied. A potential health hazard exists without original equipment replacement.

All warranted items become the sole property of Minuteman or its original manufacturer, whichever the case may be.

Minuteman disclaims any implied warranty, including the warranty of merchantability and the warranty of fitness for a particular purpose. Minuteman assumes no responsibility for any special, incidental or consequential damages.

This limited warranty is applicable only in the U.S.A. and Canada, and is extended only to the original user/purchaser of this product. Customers outside the U.S.A. and Canada should contact their local distributor for export warranty policies. Minuteman is not responsible for costs or repairs performed by persons other than those specifically authorized by Minuteman. This warranty does not apply to damage from transportation, alterations by unauthorized persons, misuse or abuse of the equipment, use of non-compatible chemicals, or damage to property, or loss of income due to malfunctions of the product.

If a difficulty develops with this machine, you should contact the dealer from whom it was purchased.

This warranty gives you specific legal rights, and you may have other rights which vary from state to state. Some states do not allow the exclusion or limitation of special, incidental or consequential damages, or limitations on how long an implied warranty lasts, so the above exclusions and limitations may not apply to you.

| Model | Parts | Labor | Poly | Travel** |
|---|-------|-------|-------|----------|
| Cord Electric Group | 5yrs | 3yrs | 12yrs | 90 days |
| Battery Auto Scrubbers (incl. on board charger) | 5yrs | 3yrs | 12yrs | 90 days |
| Battery and Manual Sweepers | 3yrs | 3yrs | 12yrs | 90 days |

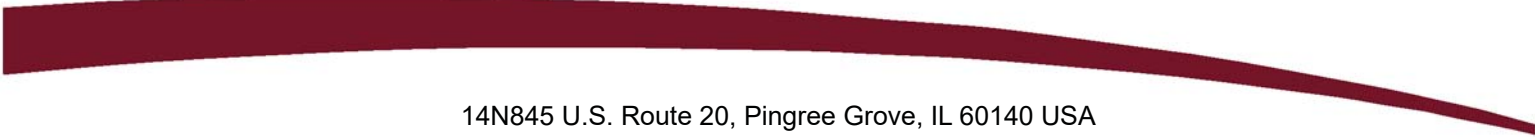
Exceptions.....

| Model | Parts | Labor | Poly | Travel** |
|---|-------|---------|-------|----------|
| Port A Scrub, all models (incl. on board charger) | 1yr | 6months | 12yrs | 90 days |
| A3S Blower | 1yr | 1yr | 0 | 0 |
| Phenom Dual Motor Upright Vacuums | 2yrs | 2yrs | 0 | 0 |
| Explosion Proof Vacuum | 1yr | 1yr | 0 | 0 |
| Propane Burnisher | 1yr | 1yr | 0 | 90 days |
| E14BQP and E14115 scrubber | 1yr | 1yr | 12yrs | 90 days |
| **Travel, 2 hours max | | | | |

| | |
|--------------------------------------|---|
| <i>Stand-alone Battery Chargers:</i> | One year |
| <i>Replacement Parts:</i> | Ninety days |
| <i>Batteries:</i> | 0-3 months full replacement, 4-12 months pro-rate |
| <i>Polypropylene Plastic Tanks:</i> | 12yr warranty, no additional labor |

“Excellence Meets Clean”

**Minuteman is a Full Line Manufacturer of Sweepers and Scrubbers,
for Industrial Facilities.**



14N845 U.S. Route 20, Pingree Grove, IL 60140 USA
Phone (800) 323-9420 - www.minutemanintl.com
A Member of the Hako Group