



Electronic Service Manuals

This electronic document is provided as a service to our customers. We do not create the contents of the information contained in this document. Should you have detailed questions pertaining to the information contained in this document, you may contact Michco, or the manufacturer which provided the original information in this electronic deliverable. Michco's only part in this electronic deliverable was the electronic assembly process. By providing this manual on line we are not guaranteeing parts availability.

You may contact Michco through the following methods:

Phone (517) 484-9312 or (800) 331-3339

2011 N. High St. -- Lansing, Michigan -- 48906

Fax: (517) 484-9836

Email: CustServe@Michco.com

Web site: www.Michco.Com

Parts Web site: www.FloorMachineParts.Com

Order Parts on Line at:

www.FloorMachineParts.Com

Directly to Parts & Service:

By Email: **Shop@Michco.com**

By Fax: (517) 702-2041

By Voice: Use numbers above.

Serving the Cleaning Industry Since 1922

Notice: All copyrighted material remains property of original owners, all trademarks are property of respective owners. Manuals are subject to Manufacturer's reproduction limitations. Originals or reproductions were provided by manufacturers through a request. We make no warranty as to the correctness of information provided in this document and you assume all risk. By placing these manuals on line we are not declaring our corporation to be an manufacturer authorized dealer or provider, please check our web site for authorized manufacturers we represent.

170 Automatic Floor Scrubber, Battery

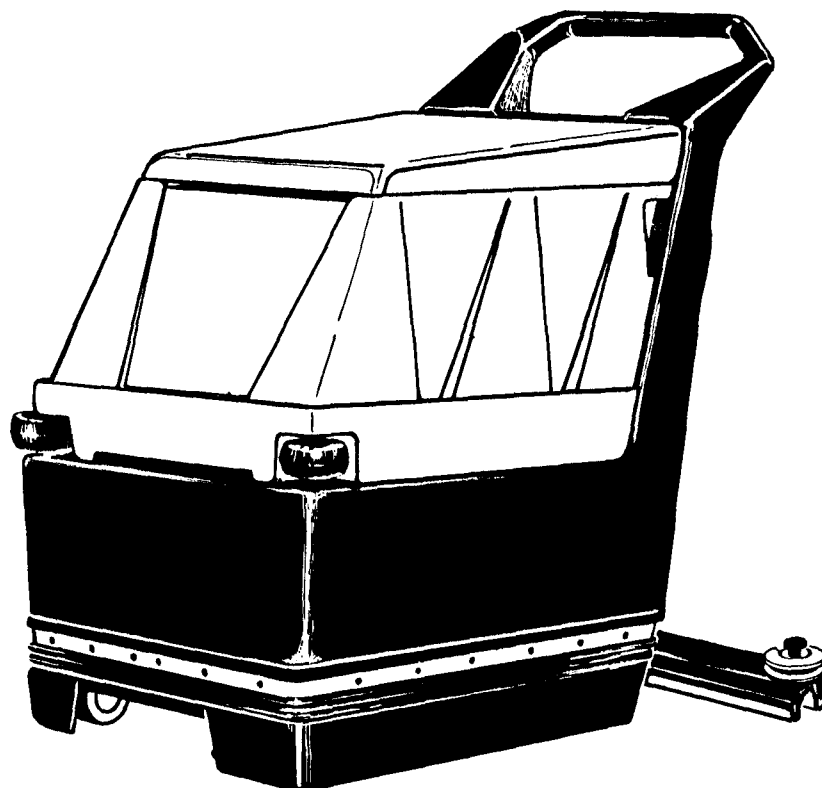
Model: MC17000QP
MC17000-00CE

OPERATION

SERVICE

PARTS

CARE



Revised 7/05

Minuteman[®]

EC Declaration of Conformity

according to Directives 89/392, 89/336 and 72/73

We, Minuteman International Incorporated, of 111 South Rohlwing Road Addison Illinois 60101 USA, declare under our sole responsibility that the products MC17000-00CE, MC17500-00 Commercial Automatic Floor Scrubbing machines to which this declaration relates corresponds to the relevant requirements of the EC Directives 89/392, 89/336 and 72/73. The following standards were used to determine compliance with the Directives: EN 292, EN 294, EN 811, EN 55011, EN 55104, EN 50082-2, EN 60335-1, and IEC 335-72.

SOUND		VIBRATION						
75 dB Operator	72 dB At 3m	.68 m/s² At Operators Hand Grips						
Tests were conducted on 6/7/96 with calibrated sound and vibration equipment under the conditions noted below: <table style="width: 100%; margin-top: 10px;"> <tr> <td style="width: 50%;">General Condition: Cloudy</td> <td style="width: 50%;">Wind: 0 km/hr</td> </tr> <tr> <td>Temperature: 29^oC</td> <td>Humidity: 85%</td> </tr> <tr> <td>Barometric Pressure: 29.5</td> <td></td> </tr> </table>			General Condition: Cloudy	Wind: 0 km/hr	Temperature: 29 ^o C	Humidity: 85%	Barometric Pressure: 29.5	
General Condition: Cloudy	Wind: 0 km/hr							
Temperature: 29 ^o C	Humidity: 85%							
Barometric Pressure: 29.5								

Jeff Pollack

Jeff Pollack, Standards Engineer

Feb. 8, 2002

Date

TABLE OF CONTENTS

	Page
Safety Instructions	1
Electrical Requirements	2
Control Panel Identification	3
Brush Installation Instructions	4
Operating Instructions/ Maintenance	5
Main Polyethelene Components	6 - 7
Solution/Recovery Tank w/Pump	8 - 9
Vacuum Components	10 - 11
Brush Drive Assemblies	12 - 13
Squeegee Assembly	14 - 15
Wiring Diagram	16 - 17

IMPORTANT SAFETY INSTRUCTIONS

CAUTION

Operators must read and understand this manual before operating or maintaining this equipment.

- Do not operate this scrubber in the red discharge area of the battery condition meter. Operating the scrubber for long periods in the red zone of the gauge will cause overheating of the motors and possible permanent damage to the batteries may result. If you are using the machine and the battery indicator needle does go into the red, finish the area you are working in and then recharge the batteries immediately.
- Keep hands and feet clear of moving parts while machine is in operation.
- All switches must be in the “OFF” position when charging batteries.
- Electrical motors and components can cause an explosion when operated near explosive materials or vapors. Do not operate this machine near flammable materials such as solvents, thinners, fuels, grain dusts, etc.
- Make sure all switches are turned “OFF” and battery connections are removed before performing any maintenance procedures.
- Store or park this machine on a level surface only.
- These machines are designed for level floor operation only. DO NOT OPERATE on ramps or inclines.
- Battery acid can cause burns. When working on or around batteries, wear protective clothing and safety glasses. Remove metal jewelry. Do not lay tools or metal objects on top of batteries.
- This machine is not suitable for picking up hazardous dust.

Charging batteries generates explosive gases. DO NOT CHARGE BATTERIES WHEN OPEN FLAMES OR SPARKS ARE PRESENT. DO NOT SMOKE. Make sure the charger is turned off before disconnecting it from the batteries. Charge the batteries in a well-ventilated area.

Maintenance and repairs must be performed by authorized personnel.

SAVE THESE INSTRUCTIONS

ELECTRICAL REQUIREMENTS:

This piece of equipment operates on 24 Volt DC.

BATTERY REQUIREMENTS:

2 x 12V 80 Amp Hour 20 Hour Rate Deepcycle P/N 956721

2 x 12V 105 Amp Hour 20 Hour Rate Deepcycle P/N 956712

BATTERY SERVICE AND INSTALLATION:

*Warning: Battery acid can cause burns. When working on or around batteries, wear protective clothing and safety glasses. Remove metal jewelry. Do not lay tools or metal objects on top of batteries.

BATTERY INSTALLATION:

1. Disconnect tank drain hose from rear of machine.
2. Disconnect vacuum recovery hose.
3. Raise tank assembly by gripping side hand holds, and tilting forward.
4. Position tank kickstand as shown below, figure 1, to hold tank in upright position. To lower, raise tank slightly forward and manually move kickstand to freed position.
5. Install batteries as shown in figure 2.

CHARGING OF BATTERIES:

Charging of batteries generates explosive gases. DO NOT CHARGE BATTERIES WHEN OPEN FLAMES OR SPARKS ARE PRESENT. DO NOT SMOKE. Make sure the charger is turned off before disconnecting it from the batteries. Charge the batteries in a well-ventilated area. Fluid levels should be checked before and after charging and maintained at the proper levels.

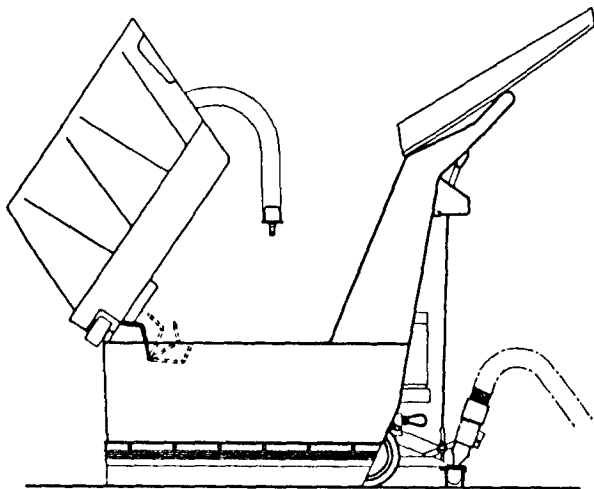


Figure1

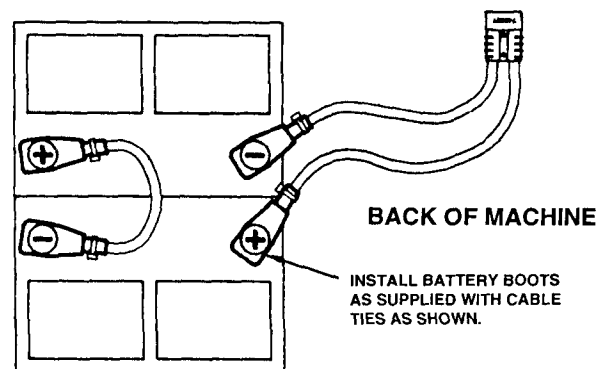
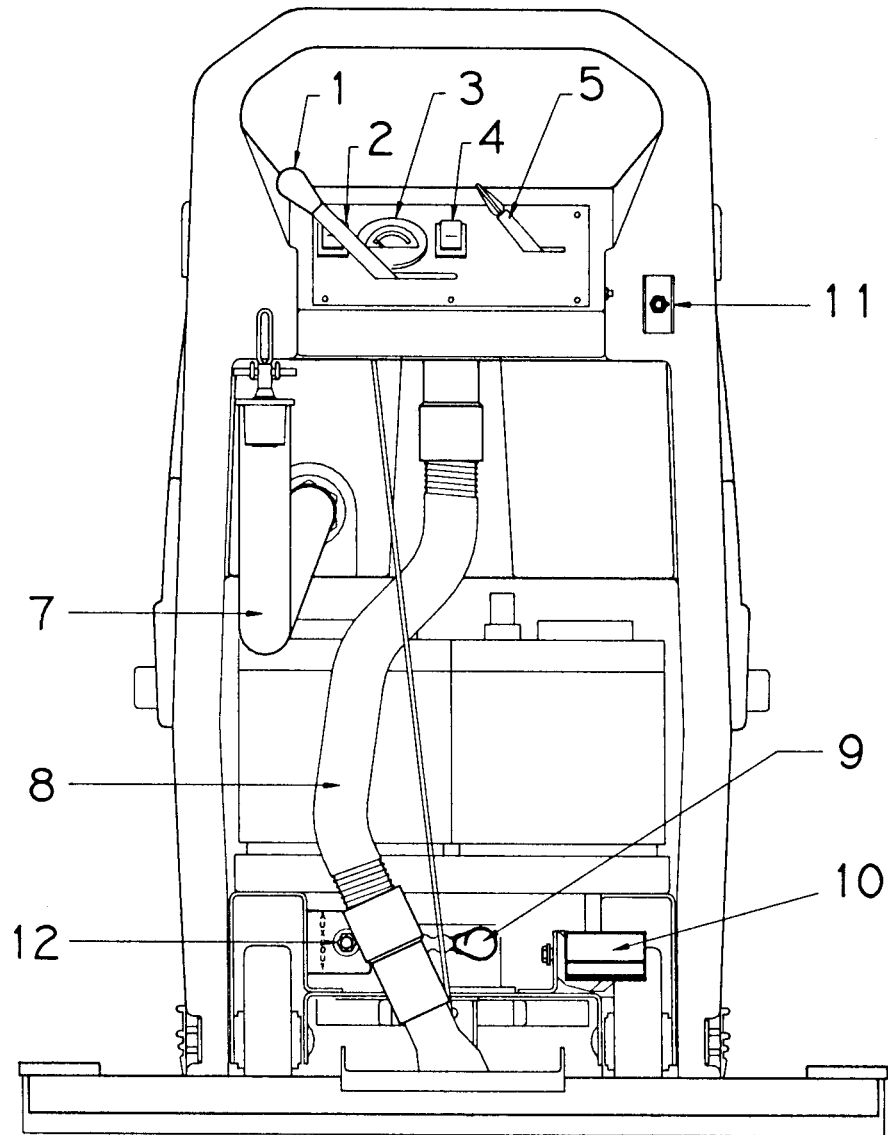


Figure 2

CONTROLS



- | | |
|---------------------------------|--|
| 1. Squeegee left lever | 8. Vacuum recovery hose |
| 2. Vacuum switch | 9. Power assist control |
| 3. Battery condition gauge | 10. Foot pedal for lower/raising brush |
| 4. Brush switch | 11. Pump switch |
| 5. Solution control lever | 12. Auxiliary out |
| 7. Drain hose for recovery tank | |

BRUSH REMOVAL

Empty solution and recovery tanks.

Disconnect batteries.

Remove Squeegee assembly.

Lower brush.

Tilt machine as shown (figure 3) until machine rests on foot pedal.

Brush has a snap-on push off clutch plate. Pushing brush away from the machine from the side, will release brush assembly.

To install: Hold brush in the center and snap on to drive hub.

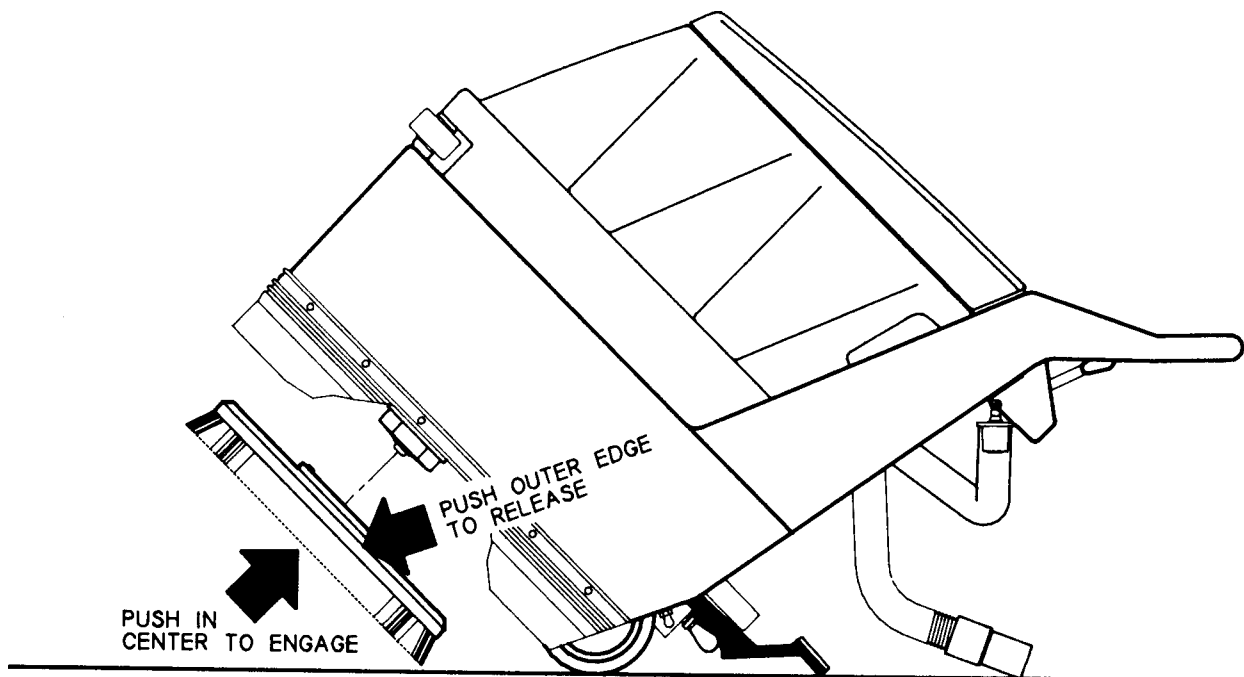


Figure 3

OPERATING INSTRUCTIONS

1. Filling: Fill the solution tank with the desired amount of water and add liquid cleaning solution to the proper dilution ratio. DO NOT USE powdered cleaning chemicals. Powders are unlikely to dissolve thoroughly, resulting in clogging the in-line solution filter. This can reduce or stop water flow to the brush.
2. Close lid.
3. Lower brush assembly.
 - To lower the brush, first push the pedal slightly towards the center of the machine (unlock it), then release it slowly.
 - To lift the brush, press the pedal down until lift mechanism engages.
4. Turn on brush switch.
5. Adjust solution control feed lever.
6. Turn on vacuum switch.
7. Lower Squeegee assembly.

After Use:

1. Turn off solution feed.
2. Switch off brush and raise.
3. Raise Squeegee assembly.
4. Turn off vacuum motor.

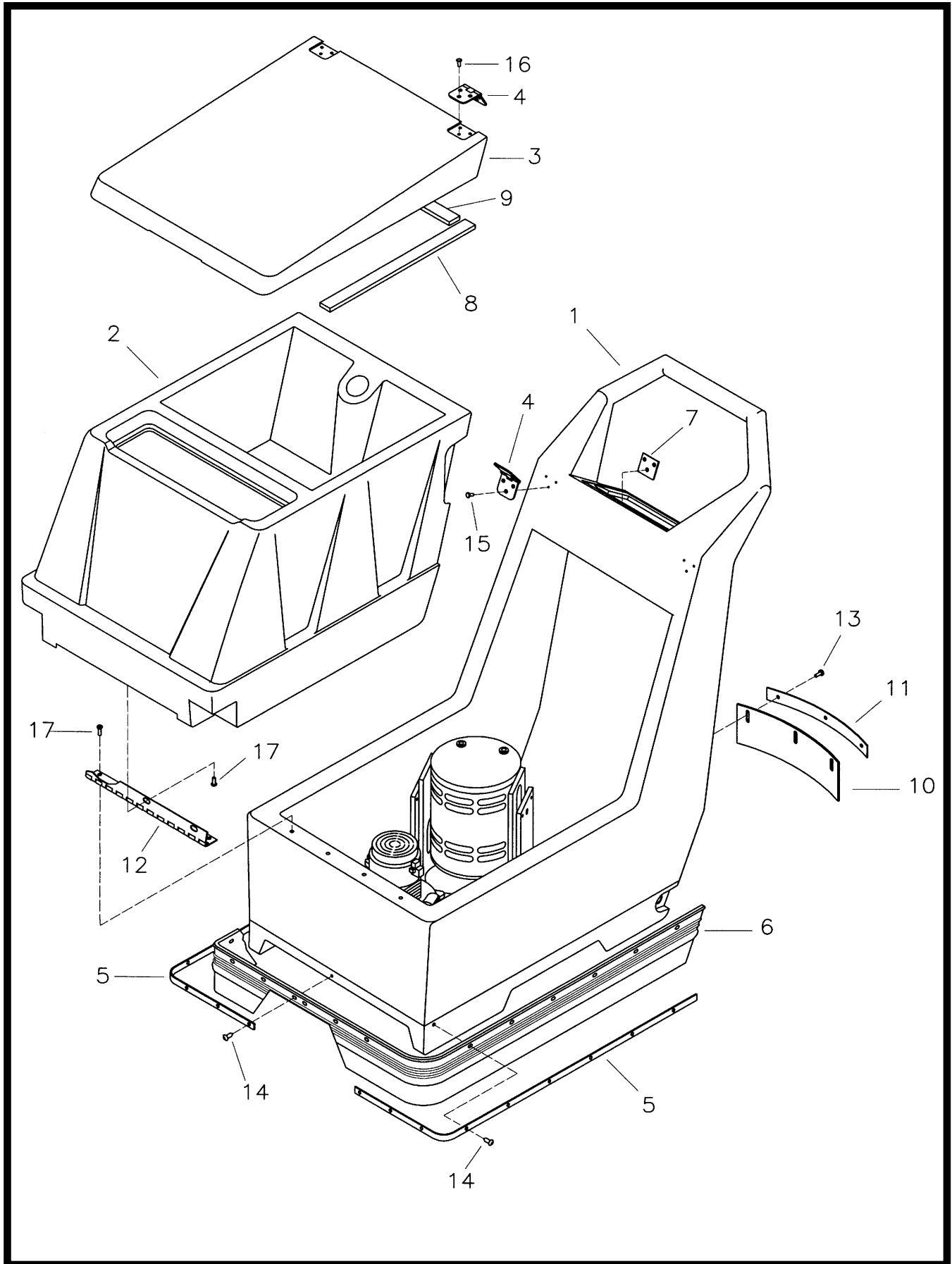
Solution and recovery tanks should be emptied after every use.

MAINTENANCE:

- | | | |
|---------|----|---|
| Daily | 1. | Clean float assembly & Squeegee blades. Vac filter. |
| | 2. | Recharge batteries (check battery acid levels before and after charging). |
| Monthly | 1. | Check wear on Squeegee blades. |
| | 2. | Grease rear wheels. |
| | 3. | Grease pivot points on brush motor assembly. |

Every 500 hours check condition of carbon brushes on vacuum motor and brush drive motor.

Main Components

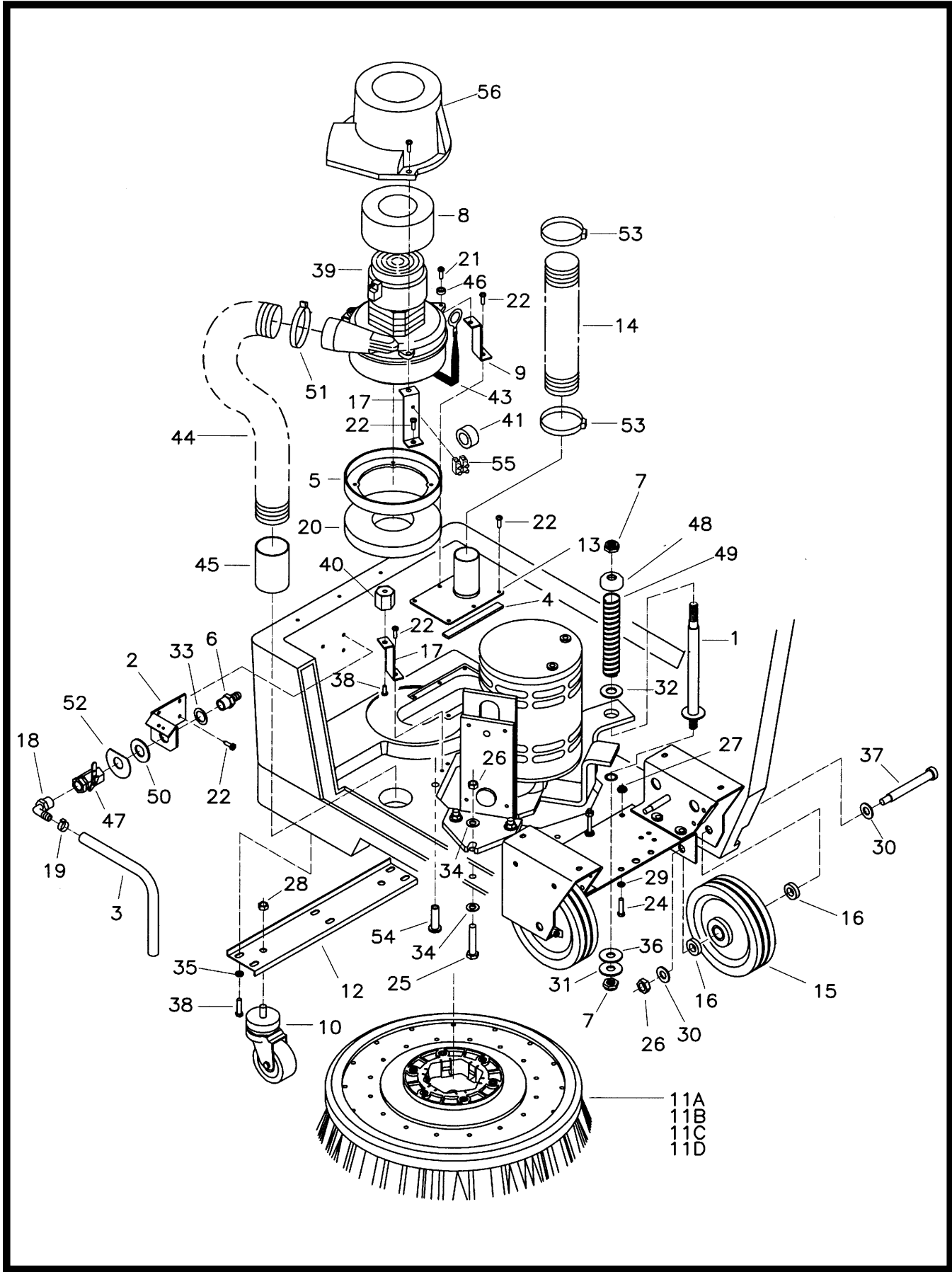


Parts List

ITEM	PART NO.	REQ'D	DESCRIPTION
1	430000	1	170 BASE AS REC DK GREY
2	430001	1	TNK POLY 170 AS REC LTGR
3	430002	1	COVER POLY 170 BURGUNDY
4	430044	2	HINGE-LID 17B/E
5	430046	2	SIDE SKIRT RETAINER 17
6	430049	1	SPLASH SKIRT 17B/E
7	430126	2	HINGE BACKING PLATE
8	430134	2	SEAL STRIP SHORT 15"
9	430135	2	SEALSTRIP LONG 16"
10	430141	1	SPLASH SKIRT 170
11	430142	1	MOUNTING BRACKET FOR 430141
12	450021	1	HINGE
13	711104	3	SCR-ST-A 10 X .50
14	711106	18	SCR-ST-A 10 X .75 PL
15	712536	6	SCR-MC 10-24 X .62 SS
16	712540	6	SCR-MC 10-24 X .37 SS TH
17	712560	6	SCR-MC 1/4-20 X .50 SS NYL

Parts List

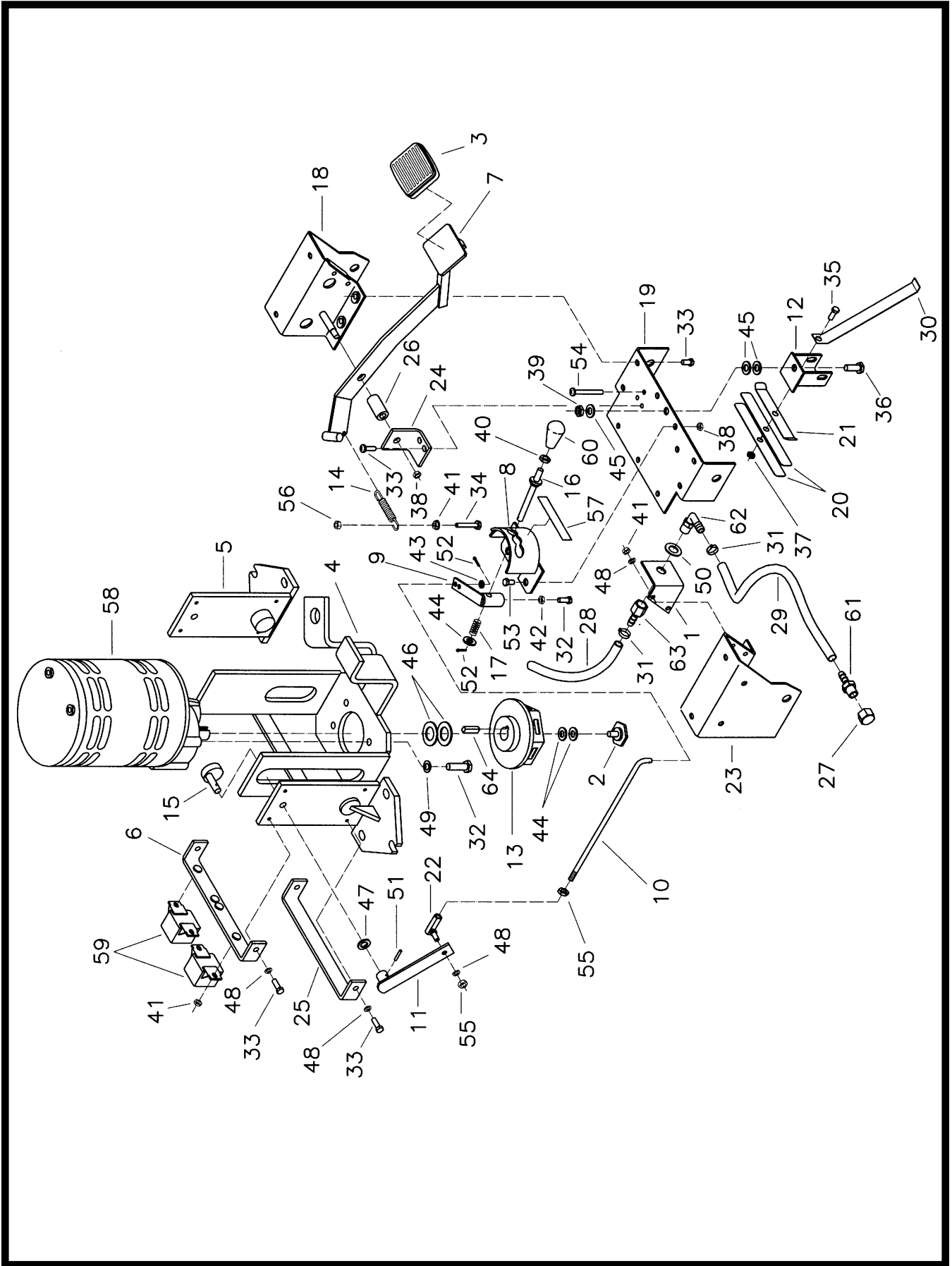
ITEM	PART NO.	REQ'D	DESCRIPTION
1	130118	1	SOLUTION STRAINER
2	200173	1	FLOAT HOUSING
3	210401	1	SOLUTION HOSE
4	210409	2	FITTING BRASS 3/8MPT X 3/8 FPT
5	210410	2	FITTING BRASS 3/8 FPT X 3/8 BARB
6	210414	2	O-RING 2-113
7	260203	1	HOSE CLAMP
8	320269	1	STRAP, DRAIN PLUG RETAINING
9	430001	1	170 SOL/RECOVERY TANK
10	430037	2	BUMPER WHEEL AXLE
11	430038	2	U BRACKET WHEEL MOUNT
12	430050	1	FILTER SCREEN
13	430089	1	FLOAT HOUSING
14	430090	1	FLOAT VALVE WELDMENT
15	430098	1	VAC RECOVERY HOSE 22 C/L
16	430116	1	HOSE 3/8 NYLOBRAID 34"
17	430121	1	STANDPIPE ASSY 170
18	430199	1	HOSE WHITE WIRELOC 24"
19	450076	2	CRIMP CLAMP SS 185R
20	450081	2	WSR SS 1.908 X 2.41 X .03
21	450083	2	INSERT FITTING
22	710353	2	SCR-MC 10-32 X .37 STPL
23	710985	2	SCR-SC 3/8-16 X .62
24	711504	1	WSR-FLAT 1/4 ID SS
25	711506	1	WSR-FLT 5/16 (NARROW) ST PL
26	711513	2	WSR-FLT .689 X 1.06 X .029 SS
27	712041	1	BLT-SHOULDER 1/4-20 X .44 X .3
28	712092	1	SCR-NYLON 1/4-20 X 2.5
29	712568	1	SCR-MC 1/4-20 X 2.25 SS
30	712665	1	NUT-HEX 1/4-20 SS
31	712667	1	NUT-HEX 1/4-20 SS NYLOC
32	760343	1	TUBE HOSE
33	762331	2	WHEEL, 2.5 OD X 1.28 W X .381 ID
34	762384	2	BUSHING SS .277 X .375 X .37
35	828970	1	WSR NEOP 1.87 X 2.4 X .125
36	828971	1	NUT 1-1/2 PIPE THREAD
37	829559	1	CABLE ASSY
38	830062	2	FITTING BRASS 90 3/8MPT
39	833316	1	DRAIN PLUG



Parts List

ITEM	PART NO.	REQ'D	DESCRIPTION
1	210083	1	ADJUSTING ROD WELDMENT
2	210370	1	SOLUTION VALVE BRACKET
3	210401	1	SOLUTION HOSE
4	250041	1	SEAL,RUBBER .12X.62X15.3
5	290017	1	MOULDED VAC MOTOR GASKET
6	342430	1	FITTING-3/8MPT 3/8HOSE BRASS
7	364-816	2	NUT-NYLOC 1/2-13 HALF
8	380064	1	RING, FOAM (CE ONLY)
9	430018	2	Z BKT 5.7 2 ST 17B
10	430029	2	CASTER-3-W13-314 RP
11A	430034	1	BRUSH-17B/E 32B NYL
11B	430108	1	PAD DRVR-17B/E 32B
11C	430111	1	BRUSH-POLY GRIT 17B/E 32
11D	430132	1	BRUSH-STRATAGRIT 17B/B32
12	430042	1	CASTER MTG BKT 17
13	430069	1	VACUUM MANIFOLD ASY
14	430099	1	HOSE-VAC 1.5 X 26" C/L
15	430138-1	2	WHEEL-6" W/BALL BEARING
16	430149	4	BUSHING-WHEEL .531 X 1.00 X .2
17	450038	1	Z BKT 5.7 VAC MOUNT
18	450040	1	ELBOW PLT 3/8MPTX3/8BARB
19	450076	2	CLAMP-CRIMP 185R SS
20	460019	1	GASKET 3.75 X 5.75 X .75
21	710180	3	SCR-MC 1/4-20 X .75 ZINC
22	711106	12	SCR-ST-A 10 X .75 PL
23	711128	1	SCR-ST-B HI-LO 8 X .62 ZINC (CE ONLY)
24	711210	3	BLT-HH 1/4-20 X 1.25 STL ZINC
25	711243	6	BLT-HH 3/8-16 X 1.50 STL ZINC
26	711380	8	NUT-NYLOC 3/8-16
27	711425	3	NUT-FLANGED WIZZ 1/4-20
28	711439	2	NUT-FLANGED WIZZ 3/8-16
29	711505	3	WSR-FLT 1/4
30	711509	6	WSR-FLT 1/2
31	711510	2	WSR-FLT .50 X 1.37 X .10
32	711511	1	WSR-FLT .62 X 1.31 X .09
33	711513	1	WSR-FLT .689 X 1.06 X .029 SS
34	711515	6	WSR-FLT .406 X .812 X .0625
35	711544	6	WSR-HELICAL 1/4
36	711559	2	WSR-INT LOCK 3/4
37	712090	2	BLT-SHOULDER 1/2 X 3.5
38	712562	7	BLT-HH 1/4-20 X .75 SS
39	740063	1	VAC MOTOR 6157-00 24V
40	740132	1	INSULATOR (GLASTIC)
41	742254	1	RFI SHIELD TORROID (CE ONLY)
42	742278	2	CAPACITOR 470PF RINGTERM (CE ONLY)
43	742281	1	GROUND STRAP (CE ONLY)
44	762398	1	HOSE RUBBER FLEX 2X13
45	801013	1	SLEEVE, HOSE
46	806294	3	SPACER-.319 X .500 X .187 ZINC (CE ONLY)
47	809413MCH	1	VALVE-SOLUTION
48	828264	1	WASHER CUP
49	828301	1	SPRING-SQUEEGEE PRESSURE ZINC
50	828975	1	WSR NEOP .75X1.5X.09
51	829067	1	CLAMP-CRIMP 560R
52	829463	1	S S WASHER
53	831001	2	CLAMP-CRIMP 440R
54	832136	1	NYLON SLEVE SOL FEED
55	832996	1	TERMINAL BLOCK 2POLE VDE (CE ONLY)
56	840112CTD	1	VAX CVR 170CE ALM CTD (CE ONLY)

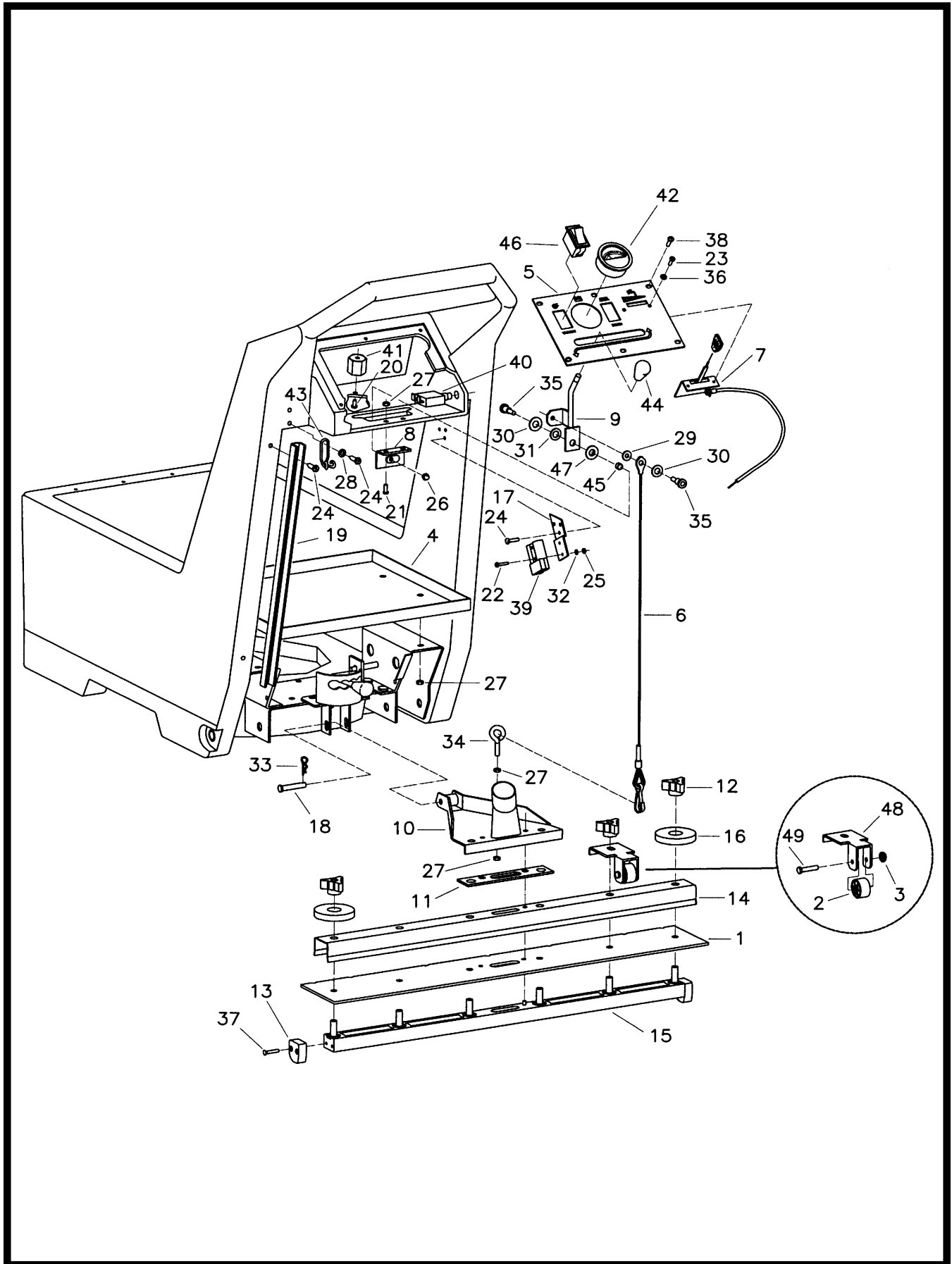
Brush Drive Assembly



Parts List

ITEM	PART NO.	REQ'D	DESCRIPTION	ITEM	PART NO.	REQ'D	DESCRIPTION
1	100000	1	MOUNTING BRACKET QUICK DISC	33	711202	10	BLT-HH 1/4-20 X .50 STPL
2	210066	1	DRIVE HUB RETAINER BOLT	34	711212	1	BLT-HH 1/4-20 X 1.50
3	210142	1	PEDAL PAD	35	711227	1	BLT-HH 5/16-18 X .62
4	430003	1	MOTOR MOUNT WELDMNT	36	711246	1	BLT-HH 3/8-16 X .87 STPL
5	430009	2	MOTOR BRACKET WELDMNT	37	711374	1	NUT-NYLOC 5/16-18
6	430013	3	STABILIZER BRACKET	38	711379	3	NUT-FLANGED WIZZ 5/16-18
7	430014	1	MOTOR LIFT WELDMNT	39	711380	1	NUT-NYLOC 3/8-16
8	430019	1	SPEED CONTROL WELDMNT	40	711420	1	NUT-HEX JAM 5/16-18 ST PL
9	430022	1	CONTROL PIVOT WELDMNT	41	711425	8	NUT-FLANGED WIZZ 1/4-20
10	430025	1	SPEED CONTROL ROD	42	711439	1	NUT-FLANGED WIZZ 3/8-16
11	430026	1	SPEED CONTROL WELDMNT	43	711505	3	WSR-FLAT 1/4
12	430030	1	SQUEEGEE MOUNT WELDMNT	44	711506	3	WSR-FLAT 5/16 STPL
13	430035-1	1	DRIVE HUB W/ BRASS INSERT	45	711515	2	WSR-FLAT .44 X .87 X .07
14	430051	1	RETURN SPRING	46	711517	3	WSR-FLAT .77 X 1.37 X .03
15	430054	1	PIVOT CAM	47	711523	1	WSR-WAVE .37 X .68 X .02
16	430055	1	THREADED CONNECTING ROD	48	711544	9	WSR-HELICAL 1/4
17	430056	1	COMPRESSION SPRING	49	711555	4	WSR-LOCK INT 3/8
18	430064	1	WHEEL MOUNT U STRUT RIGHT	50	711579	1	WSR-FLAT .56 X 1.00
19	430065	1	MOUNTING PLATE WHEEL CARRIAGE	51	711615	1	ROLLPIN .12 X .75
20	430066	3	SQUEEGEE RETURN SPRING L	52	711803	2	COTTER PIN .06 X .75
21	430067	1	SQUEEGEE RETURN SPRING S	53	712042	2	BOLT-WSR HH 5/16-18 X .62
22	430080	1	BALLJOINT	54	712569	2	SCR-MC 1/4-20 X 1.50 SS
23	430081	1	WHEEL MOUNT U STRUT LEFT	55	712666	2	NUT-HEX JAM 1/4-28 SS
24	430088	1	L BRACKET MOTOR LIFT	56	712667	1	NUT-HEX NYLOC 1/4-20 SS
25	430106	1	STABILIZER BAR LOWER	57	715136	1	DECAL DIECUT SPEED CONTROL
26	430113PLT	1	BUSHING-PLT ZINC	58	740209	1	GEARMOTOR 24V
27	430114	1	NYLON CAP 1/4 FPT	59	740241	2	CONTACTOR 24V 50AMP
28	430116	1	HOSE 3/8 NYLOBRAID X 34"	60	760592	2	KNOB OVAL TAPERED
29	430118	1	CLEAR DUMP HOSE C/L 22"	61	828952	1	FITTING 1/4MPT X 3/8 BARB
30	430127	1	RETURN SPRING 5.875	62	833325	1	FITTING NYLON 90 1/4MPT
31	450076	2	CRIMP CLAMP SS 185R	63	833473	1	FITTING BRASS 1/4FPT X 3/8 BARB
32	710986	5	SCR-SC 3/8-16 X 1.00 STPL	64	833621	1	KEY 1/4 X 1/4 X 1

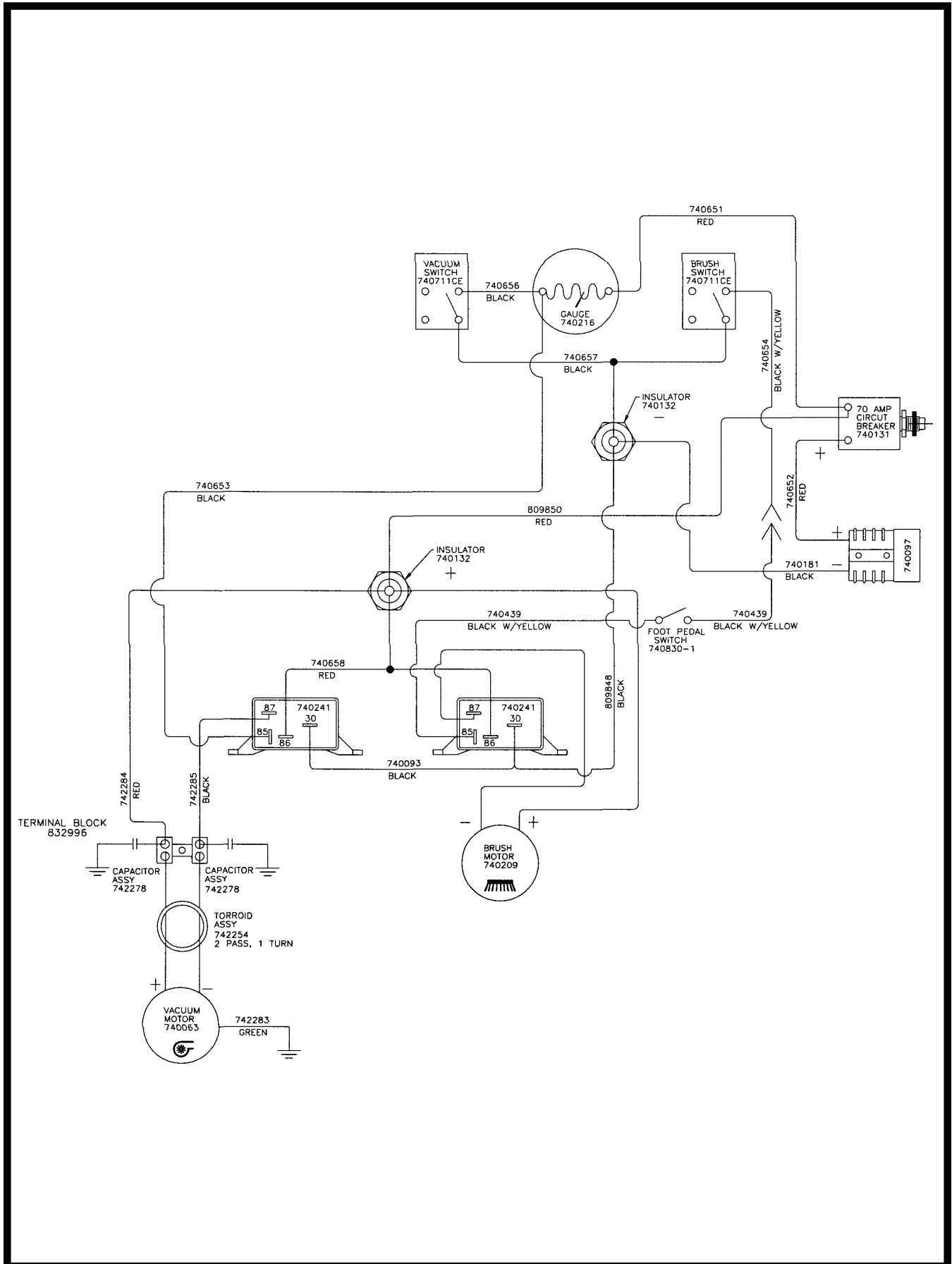
Squeegee Assembly



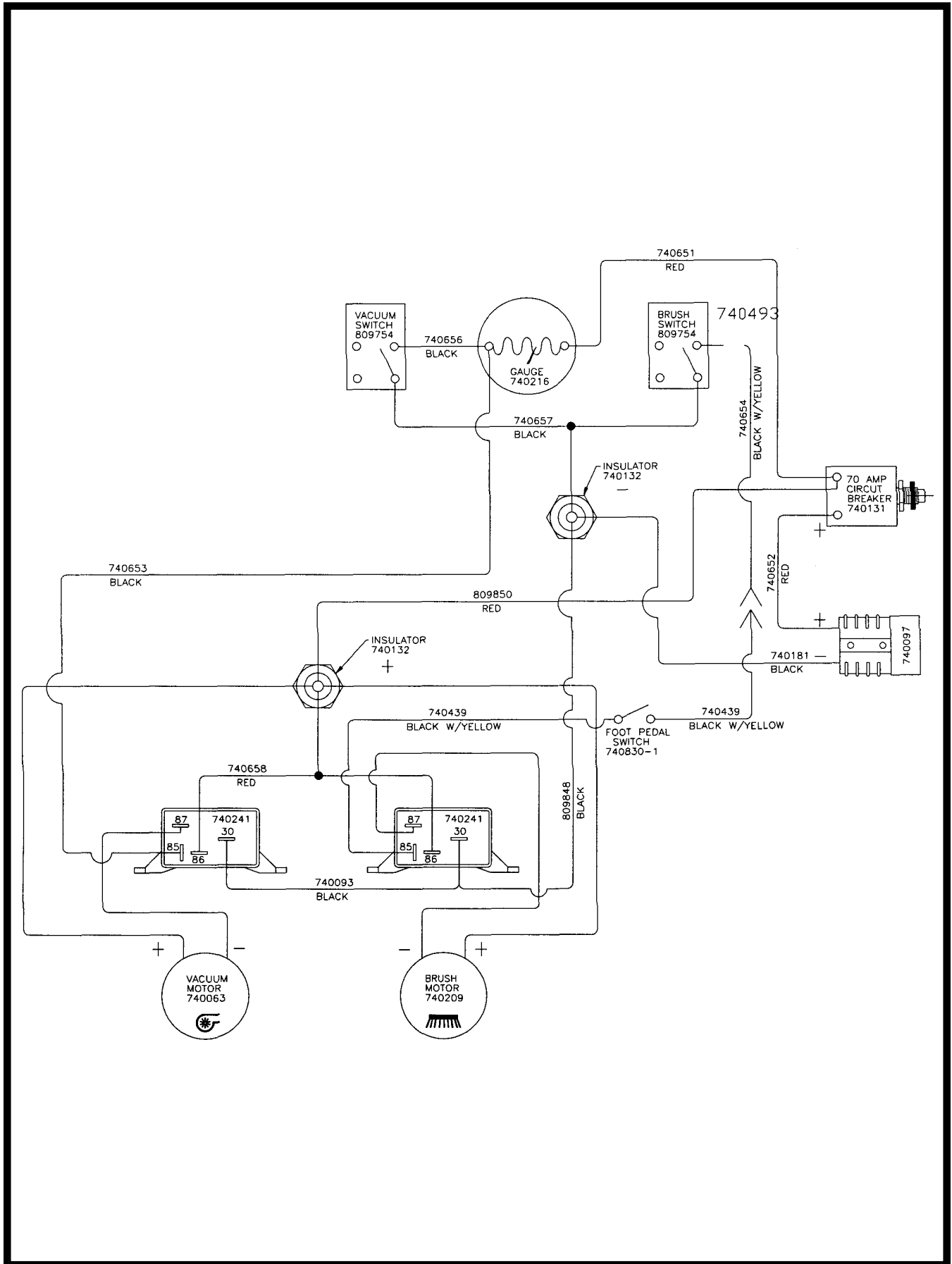
Parts List

ITEM	PART NO.	REQ'D	DESCRIPTION
1	11-145	1	SQUEEGEE GUM RUBBER
2	370031	2	WHEEL 1.5 MOLDED
3	370074	2	HUBCAP
4	430033	1	BATTERY TRAY
5	430039SP	1	DASHBOARD 170 SCREEN PRINTED
5CE	430039CESP	1	DASHBOARD 170CE SCREEN PRINTED
6	430052	1	SQUEEGEE LIFT CABLE ASSY
7	430053	1	SOLUTION CONTROL CABLE
8	430059	1	SQUEEGEE LIFT BRKT ASSY
9	430060	1	SQUEEGEE LIFT ARM ASSY
10	430070	1	SQUEEGEE MOUNT ASSY
11	430073	1	GASKET DIECUT PS BACK
12	430074	6	ADJUSTING NUT
13	430076	2	NYLON SQUEEGEE INSERT
14	430078	1	U PROFILE
15	430079	1	CASTING SQUEEGEE ASSY
16	430085	2	SQUEEGEE BUMPER WHEEL
17	430087	1	ANDERSON PLUG BRKT
18	430105	1	CLEVIS PIN .312 X 1.75
19	430120	1	U CHANNEL 170 18"
20	710178	1	SCR-MC 1/4-20 X .50 STPL
21	710180	2	SCR-MC 1/4-20 X .75 STPL
22	710207	2	SCR-MC 6-32 X .87 STPL
23	711124	2	SCR-ST-B #10 X .37 NI
24	711161	7	SCR HI/LO #10 X 3/4 PL
25	711301	2	NUT-HEX 6-32 STPL
26	711352	1	NUT-ACORN 1/4-20 ST NI
27	711425	7	NUT-FLANGED WIZZ 1/4-20
28	711503	2	WSR-FLAT #10
29	711505	1	WSR-FLT 1/4
30	711506	2	WSR-FLAT 5/16 STPL
31	711523	1	WSR-WAVE .37 X .68 X .02
32	711551	2	WSR-INTRENAL LOCK #6
33	711808	1	COTTER PIN-HAIR #13
34	712026	1	WIRE EYE BOLT 1/4-20
35	712041	2	BLT-SDER 1/4-20 X .44 X .37
36	712320	2	WSR NYLON .22 X .45 X .04
37	712517	4	SCR-MC 8-32 X 1.00 SS FH
38	712540	6	SCR-MC 10-24 X .37 SS TH
39	740097	1	CB50 RED HOUSING
40	740131	1	CIRCUIT BREAKER 70AMP
41	740132	1	INSULATOR (GLASTIC)
42	740216	1	GAUGE BATTERY CONDITION
43	760286	1	WIRE FORMED HOOK
44	760592	1	KNOB OVAL TAPERED
45	762058	1	SPACER .319 X .375 X .250
46	809754	2	SWITCH ROCKER
46CE	740711CE	2	SWITCH W/ SPLASHGUARD
47	829014	1	FLANGED BUSHING
48	832973	2	WHEEL BRACKET
49	832974	2	CLEVIS PIN 1/4 X 1-3/8

Wiring Diagram CE Version



Wiring Diagram Standard Version



LIMITED WARRANTY

Minuteman International, Inc. warrants to the original purchaser/user that this product is free from defects in workmanship and materials under normal use and service for a period of three years from date of purchase. In addition, Minuteman International, Inc. will, at its option, honor labor warranty claims for the first 12 months from date of sale, provided such claims are submitted through and approved by factory authorized repair stations. Minuteman International, Inc. will, at its option, repair or replace without charge, except for transportation costs, parts that fail under normal use and service when operated and maintained in accordance with the applicable operation and instruction manuals.

This warranty does not apply to normal wear, or to items whose life is dependent on their use and care, such as belts, cords, switches, hoses, rubber parts, electrical motor components or adjustments. Parts not manufactured by Minuteman International, Inc. such as engines, batteries, battery chargers, hydraulic pumps, and tires are covered by and subject to the warranties and/or guarantees of their manufacturers. Please contact Minuteman International, Inc. for procedures in warranty claims against these manufacturers.

Special warning to purchaser — Use of replacement filters and/or prefilters not manufactured by Minuteman International, Inc. or its designated licensees, will void all warranties expressed or implied.

A potential health hazard exists without exact original equipment replacement.

All warranted items become the sole property of Minuteman International, Inc. or its original manufacturer, whichever the case may be.

Minuteman International, Inc. disclaims any implied warranty, including the warranty of merchantability and the warranty of fitness for a particular purpose. Minuteman International, Inc. assumes no responsibility for any special, incidental or consequential damages.

This limited warranty is applicable only in the U.S.A. and Canada, and is extended only to the original user/purchaser of this product. Customers outside the U.S.A. and Canada should contact their local distributor for export warranty policies. Minuteman International, Inc. is not responsible for costs or repairs performed by persons other than those specifically authorized by Minuteman International, Inc. This warranty does not apply to damage from transportation, alterations by unauthorized persons, misuse or abuse of the equipment, use of non-compatible chemicals, or damage to property, or loss of income due to malfunctions of the product.

If a difficulty develops with this machine, you should contact the dealer from whom it was purchased.

This warranty gives you specific legal rights, and you may have other rights which vary from state to state. Some states do not allow the exclusion or limitation of special, incidental or consequential damages, or limitations on how long an implied warranty lasts, so the above exclusions and limitations may not apply to you.

Minuteman[®]

A Member of the Hako Group of Companies

World Headquarters

Minuteman International, Inc.
111 South Rohlwing Road
Addison, Illinois 60101

Phone 630-627-6900

Fax 630-627-1130

www.minutemanintl.com

Minuteman Canada, Inc.
2210 Drew Road
Mississauga, Ontario
L5S 1B1

Phone 905-673-3222

Fax 905-673-5161

983206

Printed in U.S.A.