



Electronic Service Manuals

This electronic document is provided as a service to our customers. We do not create the contents of the information contained in this document. Should you have detailed questions pertaining to the information contained in this document, you may contact Michco, or the manufacturer which provided the original information in this electronic deliverable. Michco's only part in this electronic deliverable was the electronic assembly process. By providing this manual on line we are not guaranteeing parts availability.

You may contact Michco through the following methods:

Phone (517) 484-9312 or (800) 331-3339

2011 N. High St. -- Lansing, Michigan -- 48906

Fax: (517) 484-9836

Email: CustServe@Michco.com

Web site: www.Michco.Com

Parts Web site: www.FloorMachineParts.Com

Order Parts on Line at:

www.FloorMachineParts.Com

Directly to Parts & Service:

By Email: **Shop@Michco.com**

By Fax: (517) 702-2041

By Voice: Use numbers above.

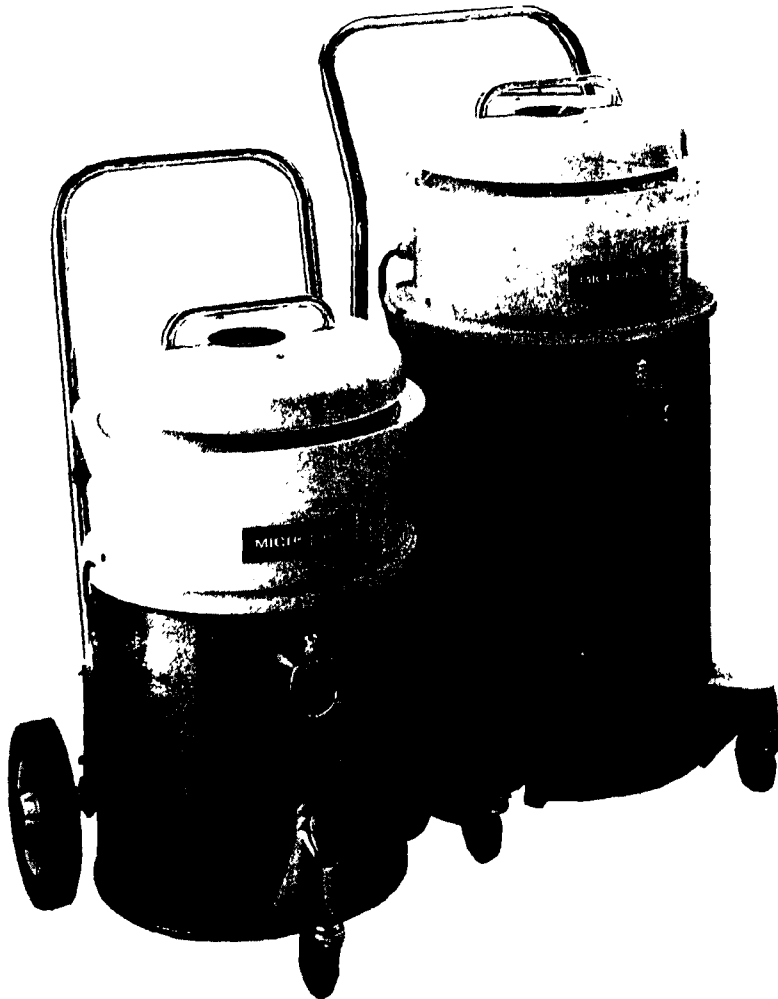
Serving the Cleaning Industry Since 1922

Notice: All copyrighted material remains property of original owners, all trademarks are property of respective owners. Manuals are subject to Manufacturer's reproduction limitations. Originals or reproductions were provided by manufacturers through a request. We make no warranty as to the correctness of information provided in this document and you assume all risk. By placing these manuals on line we are not declaring our corporation to be an manufacturer authorized dealer or provider, please check our web site for authorized manufacturers we represent.



KENT

MODEL
KT-706 MICROSTAT
KT-707 MICROSTAT
HOSPITAL VACUUM



**OPERATING,
MAINTENANCE
INSTRUCTIONS
ILLUSTRATED
PARTS LIST**

JUNE 1988

Write the model and serial number of your vacuum in the space provided. Refer to the rating plate on cleaner.

Model #

Serial #

Retain this owner's guide for future reference.

THE KENT COMPANY

P.O. Box 1665

2310 Industrial Parkway
Elkhart, IN 46514

TEL: (219)293-8661, (800)334-1083

FAX: (219)295-8610

IMPORTANT SAFEGUARDS

Accidents due to misuse can only be prevented by those using the machine. To guard against injury, basic safety precautions should be observed, including the following:



Read and follow all safety instructions. **WARNING - ELECTRIC SHOCK COULD OCCUR IF USED OUTDOORS OR ON WET SURFACES.**

This vacuum cleaner is designed to be safe when used to perform cleaning functions as specified in the Owner's Manual. Should damage occur to electrical or mechanical parts, cleaner should be repaired by a competent service station before using in order to avoid further damage to machine or physical injury to user.

- A damaged power cord could cause electrical shock and/or fire. To minimize this possibility observe the following precautions:
 - Do not run cleaner over power cord.
 - Avoid closing doors on power cord, pulling it around sharp edges, or placing sharp-edged objects upon it.
 - On machines without cord reels, wind cord no tighter than is necessary to retain it. Refer to Owner's Manual.
 - When disconnecting power cord from electrical outlet, grasp the plug. Pulling it out by the cord itself can damage cord insulation and internal connections to plug. Also avoid damage to insulation by keeping cord away from oil and heat.
 - Your vacuum cleaner creates suction and contains a revolving brush. To avoid bodily injury from suction or moving parts, the vacuum cleaner should not be placed against, or in close proximity to, loose clothing, jewelry, hair, or body surfaces while cleaner is connected to electrical outlet.
 - Whenever possible plug your cleaner into a standard wall outlet. Use of extension cord or light socket with inadequate current-carrying capacity could result in

electric shock or fire hazard.

- Disconnect cleaner from electrical outlet before servicing, such as changing bags or belts. You could receive bodily injury from moving parts of machine should switch accidentally be turned on.
- Do not use your vacuum cleaner in areas where flammable and/or explosive vapor or dust is present to avoid possibility of fire or explosion. Some cleaning fluids can produce such vapors. Areas on which cleaning fluids have been used should be completely dry and thoroughly aired before being vacuumed.
- Attachments such as demolishers and paint sprayers can cause toxic, flammable, explosive, or suffocating vapors in indoor areas.
- To avoid fire hazard, do not pick up matches, fireplace ashes, or smoking material with cleaner.
- Keep your work area well lighted to avoid picking up harmful materials (such as liquids, sharp objects, or burning substances) and/or tripping accidents.
- Use care when operating the cleaner on irregular surfaces such as stairs. A falling cleaner could cause bodily injury and/or mechanical damage. Proper storage of machine in an out-of-the-way area immediately after use will also prevent accidents caused by tripping over cleaner.
- Store your vacuum cleaner indoors in a cool, dry area not exposed to the weather to avoid electrical shock and/or cleaner damage.
- Exercise strict supervision to prevent injury when using vacuum cleaner near children or when child is allowed to operate vacuum cleaner. Do not allow children to play with vacuum cleaner and never leave cleaner plugged in and unattended.

CUSTOMER RESPONSIBILITIES

Always use care when operating the machine. Keep clear of moving parts. Do not work on machine with power applied and observe the rules for safe operation. Keep the machine clean. Follow a regular maintenance and check schedule to provide efficient and safe operation. A well cared for machine will last longer and

operate efficiently. Always be careful for yourself and for others.

GENERAL INFORMATION

Before you plug in your cleaner, check the voltage data plate located on the cleaner near the power cord to check if it agrees within 10% of the voltage available (see Data Plate figure). Connect only to a grounded (3-wire) electrical outlet.

Do not oil. The motor in your vacuum is permanently lubricated and sealed. Do not oil the motor at any time.

SERVICE INFORMATION

To obtain consistent performance over the life of your floor machine, read through these instructions and keep them handy for future reference. If you require service, contact the dealer from whom the machine was purchased, or the authorized Kent service station. Always refer to your Kent limited warranty for complete service information.

THE KENT CO.		
ELKHART, INDIANA USA		
SERIAL NO	MODEL	
VOLTS	PHASE	Hz
MOTOR 1	A.M.P	H.P
MOTOR 2	A.M.P	H.P

The model, type, and serial number are indicated on the data plate. For prompt and complete service information, always refer to these numbers when inquiring about service.

GROUNDING INSTRUCTIONS

This vacuum should be grounded while in use to protect the operator from electrical shock. The vacuum is equipped with a 3-conductor cord and a 3-prong grounding type attachment plug cap to fit the proper grounding type receptacle. The green (or green & yellow) conductor in the cord is the grounding wire. Never connect the green (or green and yellow) wire to a live terminal. If your unit is for use on less than 150 volts, it has a plug that looks like Figure 1. If it is for use on 150 to 250 volts, it has a plug that looks like Figure 3. An adapter, Figure 2, is available for connecting Figure 1 plugs to 2-prong receptacles. The green (or green and yellow) grounding wire extending from the adapter

must be connected to a permanent ground such as to properly grounded outlet box. No adapter is available for Figure 3 plugs.

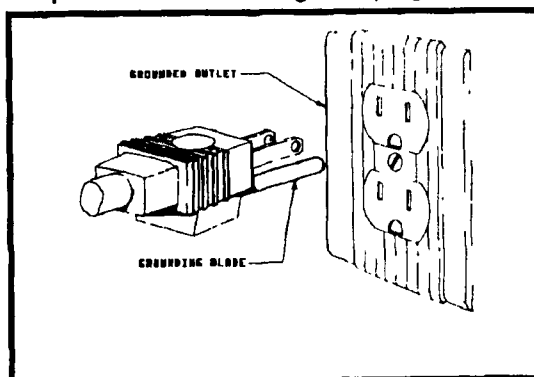


FIG. 1

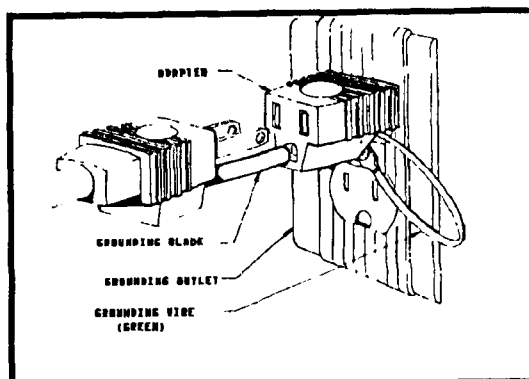


FIG. 2

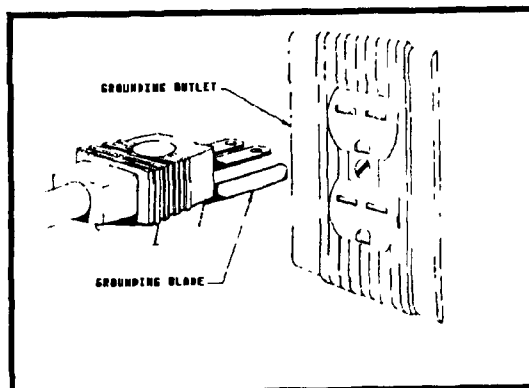


FIG. 3

Use only 3-wire extension cords which have 3-prong grounding-type plugs and 3-prong receptacles that accept the appliance's plug. Replace or repair damaged cords

ASSEMBLY INSTRUCTIONS FOR WET OR DRY USE

After unpacking the shipping carton, carefully inspect all components to insure that there is no concealed freight damage. If such damage is discovered, file a concealed freight damage report immediately with your delivering carrier.

●INSTRUCTIONS FOR DRY USE

All wet/dry models are assembled and ready for wet use.

For dry use, the following procedure is required:

Release mounting clamps and lift motor head from recovery tank assembly.

Carefully set aside motor head and protect from damage.

Place the elastic band of the disposable paper filter over the outer edge bead of the recovery tank, then push the paper filter bag down into the tank(FIG. 4).



FIG. 4

Place the flannel dry filter into the tank inside the paper filter(FIG. 5).



FIG. 5

Install the motor head on the tank and fasten the clamps.

●WET SHUT-OFF SYSTEM

Your cleaner is equipped with a permanently installed wet shut-off system that operates automatically when the tank becomes full of liquid, foam, or suds.

The system consists of a metal frame and a float ball. When the level of fluid or suds rises in the tank, the ball moves upward until it reaches the seal ring and shuts off all suction. You will know when the wet shut-off is engaged because you will be unable to pick up anything with the cleaner, and the sound of the motor will change(FIG. 6).

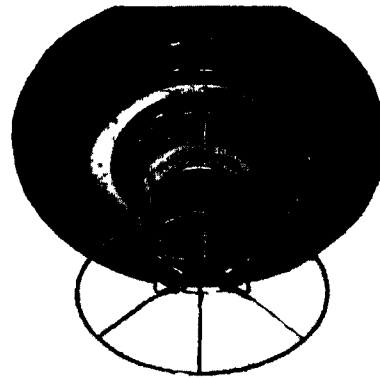


FIG. 6

When the wet shut-off becomes engaged, you must immediately turn off the machine, disconnect the power cord from the electrical outlet, and empty the tank. The machine will not operate until the tank has been emptied.

After the tank has been emptied, the wet shut-off will automatically disengage, and the cleaner will be ready for normal use.

NOTE - The wet shut-off assembly is permanently installed and should never be removed.

●INSTRUCTIONS FOR WET USE

Release the mounting clamps and lift the motor head from the tank assembly.

Remove the flannel dry filter bag.

Take out the disposable paper filter.

Replace the motor head, fastening the clamps securely.

Attach the operator's handle and the appropriate tool for wet pick-up.

●CONNECT HOSE TO CLEANER

Grasp hose with finger and lift lock knob to top of suction opening. Align hole in hose coupling with lock knob. Insert hose all the way into open-

ing until it stops, then release lock knob so hose is locked into position. If lock knob fails to fall into place to secure hose, twist hose coupling until lock knob snaps down into place. (To remove hose, lift up lock knob and pull out hose, see FIG. 7)

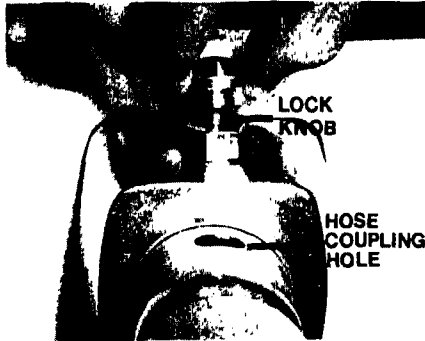


FIG. 7

Attach the operator's handle and appropriate dry tool, and the vacuum is ready for dry pick-up.

CHANGING THE MICROSTAT FILTERS

In order to guarantee effective and efficient operation of your new Kent KT-706/707 Microstat filter system, the Microstat filters must be changed when necessary. (Every two to four weeks under heavy use is recommended.)

•TO CHANGE THE KENT MICROSTAT FILTER

Remove the Head Assembly from the vacuum and place it on the floor in an inverted position.

Remove the three thumb nuts which retain the float cage assembly. Remove the float cage assembly.

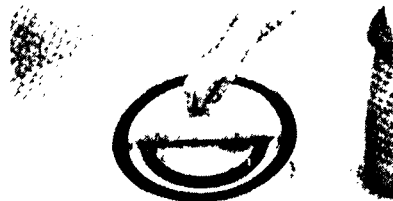


FIG. 8

Take out the old filter and replace it with a new Kent Microstat Filter. Cover the entire screen

with the filter pushing holes in the filter at the three (3) screws so that the screws protrude through the filter. Place the float cage assembly over the filter, slipping the three (3) holes of the flange over the screws. Replace the three (3) thumb nuts, tightened to a firm position.

Replace the vacuum head on the tank, secure the clamps, and the Kent Microstat vacuum is ready for operation.

REGULAR MAINTENANCE PROCEDURES

•END OF THE DAY CLEANING PROCEDURE

Wheel Microstat to disposal area of waste dumping which has been selected by the Operating Room Supervisor or Executive Housekeeper.

Empty the Microstat recovery tank of liquid if you have been using the machine for wet pick-up. If it has been used for dry use, remove the funnel/mitten filter and shake out dust. This filter may be laundered when necessary. It can also be auto-claved. Discard paper filter bag of waste.

Remove motor head from tank

Plug electrical cord into the nearest outlet

Lay motor head on its side, switch on and run until the lower layers of the filter are dry. (Approximately 5 minutes.)

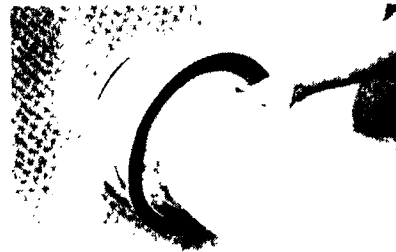


FIG. 9

Use detergent germicide solution to clean
Interior of tank and hose outlet
Exterior of the motor head.

Reassemble unit after all components are cleaned. Clean pick-up tool by dipping in a detergent germicide solution. Wipe dry. Wipe hose and operator's handle down with detergent germicide. Store hose with ends hanging down.

•TO CLEAN WET FILTER ASSEMBLY

NOTE - Disconnect power cord from electrical outlet.

The wet shut-off switch located underneath the cleaner lid is covered by a permanently installed synthetic mesh filter bag which is designed to prevent suds from reaching the motor housing (FIG 10).



FIG. 10

The wet filter assembly is permanently attached and should not be removed. The filter bag should be gently brushed or wiped clean.

Always avoid getting moisture into the motor area either inside or outside the cleaner lid.

After cleaning and thoroughly drying the filter systems and the recovery tank, replace cover on top of cleaner with exhaust outlet positioned above hose opening and fasten clamps on each side of cleaner. Make sure that no part of the filter bag is caught between the cleaner tank and lid.

● MAINTENANCE OF MOTOR UNIT

Inspect the armature brushes after the first 400 hours of operation and frequently thereafter. They should be replaced when worn to 3/8" in length. Permitting the brushes to be worn to less than 3/8" in length invariably will cause damage to the armature, thus nullifying the warranty. Always replace all brushes at the same time.

No other maintenance of the motors is required; none should be attempted during the first year of purchase.

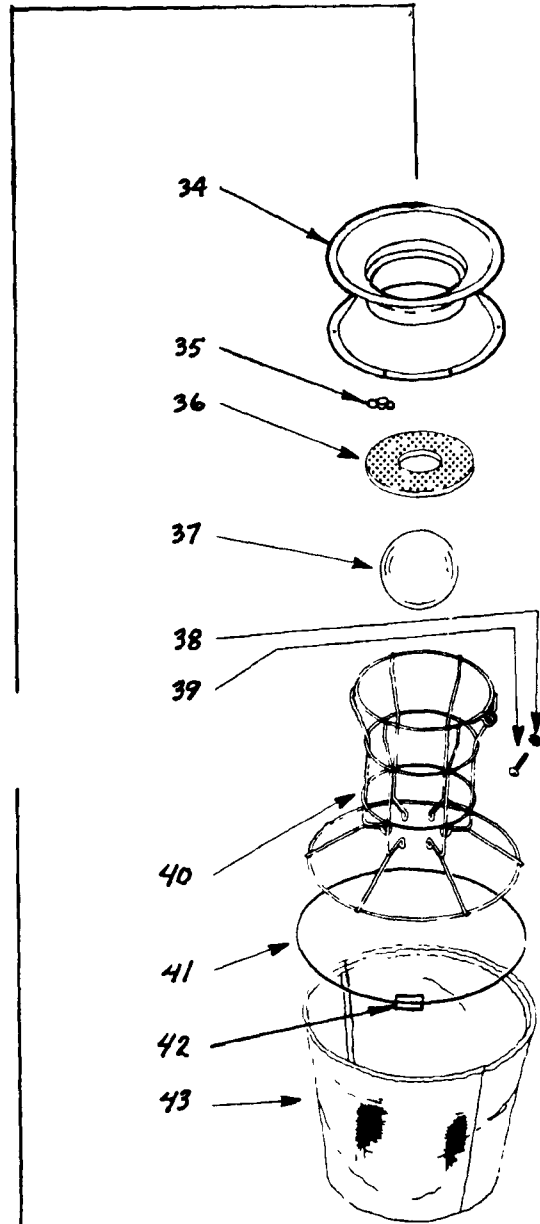
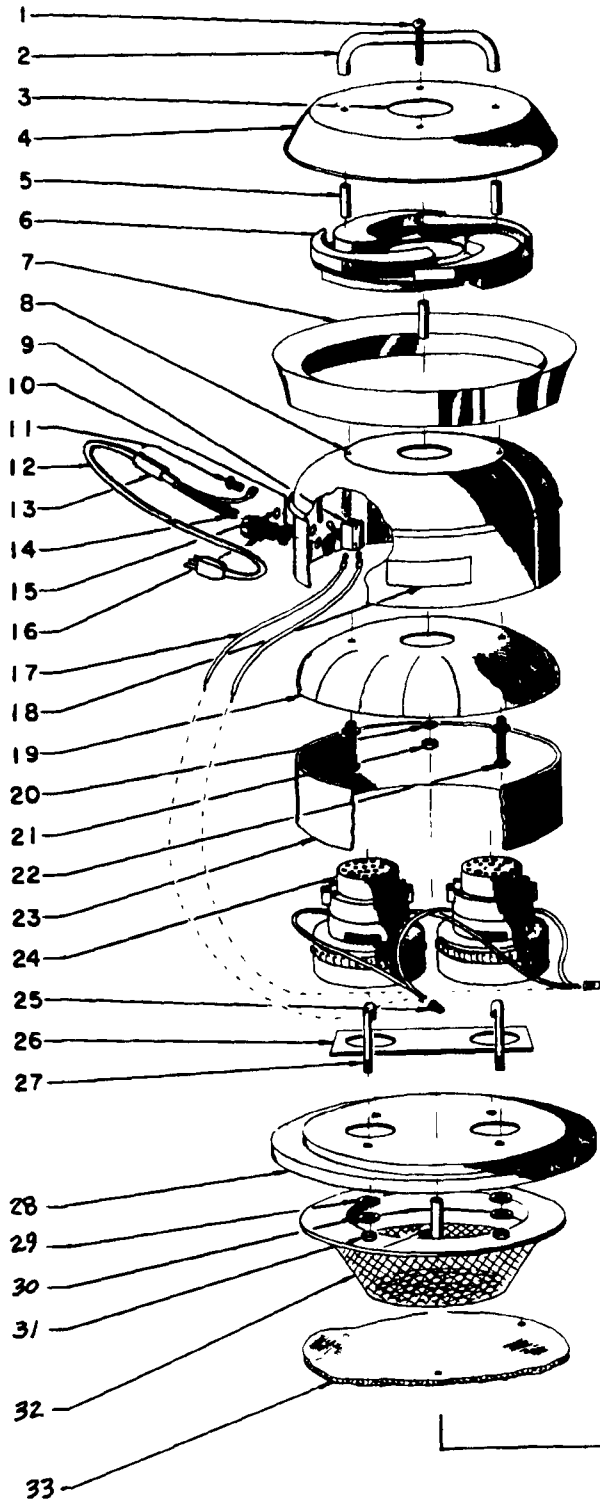
To obtain a replacement wet filter assembly, ask for Separator Assembly E13100 (FIG. 11).



SEPARATOR ASSEMBLY-E13100

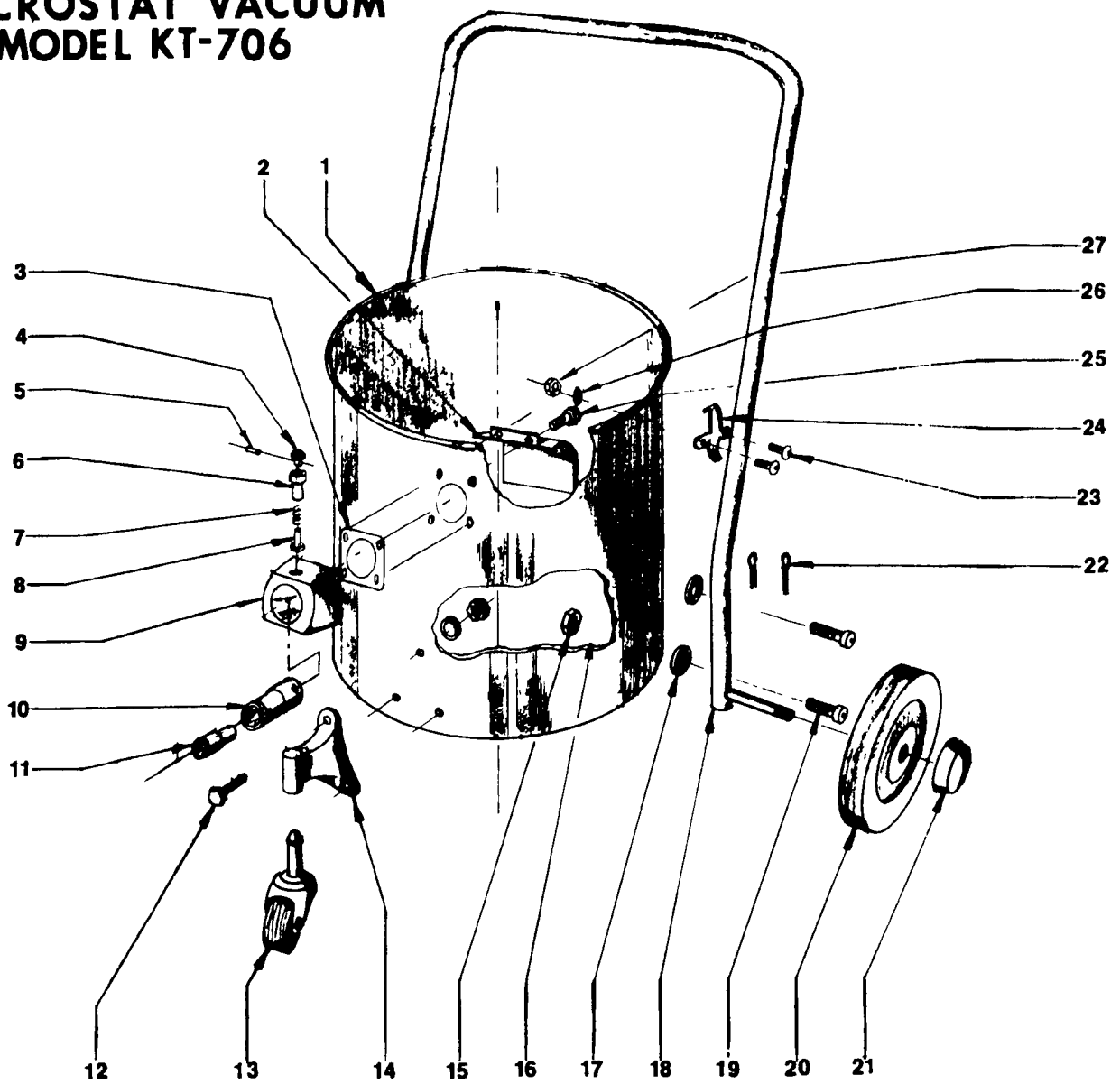
FIG. 11

**MICROSTAT VACUUMS
MODELS KT-706 & KT-707**

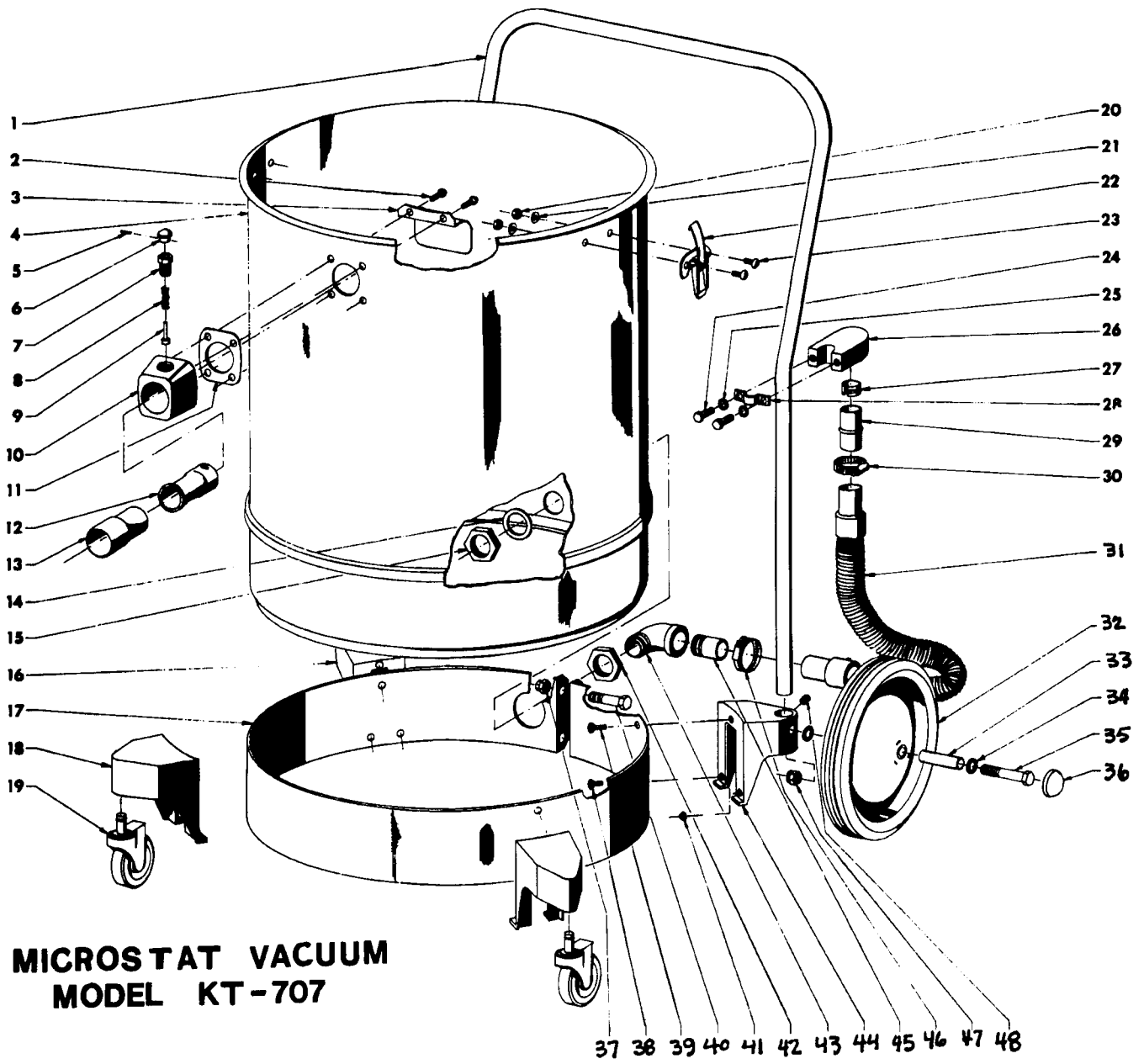


SEQ NO.	PART NO.	PART NO.	DESCRIPTION	QTY.
	034042	034134	ASM,VAC HEAD--KT-707,115V,KENT	1
1	223044	223044	SCR MACH RD HD 10-24X2.00L	2
2	111213	111213	HANDLE-MUFFLER COVER	1
3	048806	048806	LABEL,IDENT--KENT,3.50 CIRCLE	1
4	111004	111004	DBS,REPLACED BY 052696	1
5	005537	005537	PIN,ROLL--.375 DIA,1.500 LONG	4
6	032909	032909	ASM,MUFFLER--	1
7	402602	402602	EXTRUDED PL DEFLECTOR RING	1
8	050042	050042	COVER-MOTOR 3P	1
9	026644	026644	SWITCH,TOG--DPST,20A,125V	1
10	006108	006108	NUT,SPECIAL--.500 PIPE,HEX LOC	2
11	003275	003275	NUT,HEX-- 5-32,BRASS	1
11	004250	004250	WSHR LK .148ID.2500D.03ITSPLT	1
11	223188	223188	SCR MACH PAN HD 6-32X.500L	1
12	025394	025394	CORD,POWER--16-3,SJTW,GRAY,50°	1
13	048350	048350	TUBE,VINYL--.375X.500, 2.75L	1
14	026124	026124	TERM,LUG--RING,#10,14-16 AWG,I	2
15	004227	004227	WSHR LK .531ID.8750D.040T,INT	1
16	048356	048356	BSHG,STRAIN RLF--.37-.50 ACCOM	1
17	025357	025357	ASM,WIRE--16GA,RED,19.0L,RING	2
18	048815	048815	LABEL,IDENT--MICROSTAT,1.5X5.2	1
19	049715	049715	FELT--COVER,MOTOR,MICROSTAT	1
20	224012	224012	WSHR FLT .219ID.5000D.065T STL	4
21	222224	222224	NUT,HEX LOCK-- 10-24,ZN PLT	2
22	223044	223044	SCR MACH RD HD 10-24X2.00L	2
23	400203	400203	FELT STRIP	1
24	023867	023867	MTR,VAC--115V,BYP,2 STG,PD	2
25	026400	026400	NUT,WIRE--IDEAL 748	2
26	400602	400602	GASKET-SUPPORT PLATE	1
27	400502	400502	HOOK MOTOR CLAMPING	4
28	053852	053852	GASKET	
28	034076	034044	ASM MOTOR SUPPORT PL & GASKET	1
29	111384	111384	BUSHING I 7/32X3/16	4
30	224015	224015	WSHR FLT .187ID1.000D.063T STL	4
31	222223	222223	NUT,HEX LOCK-- 10-32,ZINC	4
32	900400	900400	BOTTOM CLAMPING PLATE/SCREEN	1
33	902901	902901	FILTER,MICROSTAT--14.00DIA.	1
34	034034	034034	WDMT,RING--BAG & FLOAT FRAME	1
35	005433	005433	WSHR FLT .281ID.7500D.120T STL	3
35	222256	222256	NUT,WING--.250-20,SS	3
36	048645	048645	GASKET-VAC MOTOR	1
37	E49190	E49190	BALL,PLSTC--4.000 DIA,1.375 OZ	1
38	002370	002370	SCR MACH TR HD .250-20X1.00L	1
39	003408	003408	NUT,SQUARE--.250-20,BRASS	1
40	E13065	E13065	ASM,FRAME--VALVE	1
41	111023	111023	DUST BAG WIRE	1
42	111493	111493	ALUMINUM FOIL .005X1X3	1
43	E13100	E13100	ASM,SEPARATOR--	1

MICROSTAT VACUUM MODEL KT-706

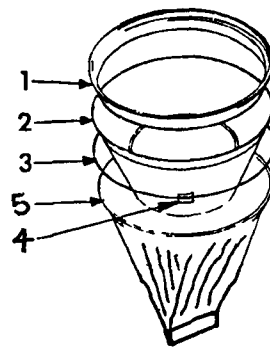


SEQ NO.	PART NO.	DESCRIPTION	QTY.
1	406800	ASM.BASE--5 GAL,SS,COMPLETE	
1	406801	TANK--5 GAL,SS,W/SNAPS	1
2	E25630A	DEFLECTOR-INLET AIR	1
3	E36384	GASKET-BODY	1
4	E36379	KNOB	1
4	E36380	ASM,INLET--	1
5	005541	PIN,GRVD--.062 DIA, .375L	1
6	E36378	SLEEVE-COUPLING LOCK	1
7	E49037	SPRING,COMP .274D .766L .030WD	1
8	E49036	PIN,CLEVIS--.192X .875 LONG	1
9	E12990	BODY-CONNECTOR	1
10	E36374	TUBE-COUPLING	1
11	706704	CUFF-HOSE SAME AS 16425	1
12	223218	SCR CAP HEX HD .250-20X.625L	3
13	111567	CASTER--3.00DIA,.437STEM	1
14	406702	BRACKET-CASTOR	1
15	222258	NUT,HEX--.250-20,SS	7
16	224073	WSHR SEAL .250ID SS	7
17	111287	BUSHING-RUBBER	4
18	400801	TRICYCLE HANDLE	1
19	223219	SCR MACH FIL HD .250-20X1.25L	4
20	400802	WHEEL--8.00DIA,.446BORE,1.62HB	2
21	111461	HUB	2
22	004297	PIN,COTTER--.094X .750 LONG	4
23	223220	SCR MACH RD HD 10-32X.375L	4
24	E36398	CLAMP-TOGGLE	2
25	002367	SCR TPG F WSH HD 10-24X.625L	4
26	224074	WSHR SEAL .203ID SS	4
27	222259	NUT,HEX-- 10-32,SS	4



SEQ NO.	PART NO.	DESCRIPTION	QTY.
1	111765	HANDLE	1
2	002367	SCR TPG F WSH HD 10-24X.625L	4
3	E25630A	DEFLECTOR-INLET AIR	1
4	111679	TANK,VAC--16 GAL,SS	1
5	005541	PIN,GRVD--.062 DIA, .375L	1
6	E36379	KNOB	1
7	E36378	SLEEVE-COUPLING LOCK	1
8	E49037	SPRING,COMP .274D .766L .030WD	1
9	E49036	PIN,CLEVIS--.192X .875 LONG	1
10	E12990	BODY-CONNECTOR	1
11	E36384	GASKET-BODY	1
12	E36374	TUBE-COUPLING	1
13	706704	CUFF-HOSE SAME AS 16425	1
14	715402	SEAL	1
15	715401	NUT,SPECIAL--1 INCH PIPE NUT	1
16	111716	WHEEL BRACKET-RIGHT	1
17	907611	CARRIAGE BAND	1
18	111714	WHEEL BRACKET-CASTOR	2
19	111567	CASTER--3.00DIA,.437STEM	2
20	003278	NUT,HEX-- 10-32,ZN PLT	4
21	224074	WSHR SEAL .203ID SS	4
22	E36398	CLAMP-TOGGLE	2
23	223220	SCR MACH RD HD 10-32X.375L	4
24	002253	SCR CAP HEX HD .250-20X.750L	2
25	002278	WSHR LK .262ID.4890D.062TSPLT	2
26	719400	ASM,SUPPORT--HOSE	1
27	709500	BUTTON SPRING	1
28	715409	CLAMP	1
29	709200	FERRULE	1
30	049082	CLAMP,HOSE--1.50 MAX DIA,WORM	1
31	033762	ASM,HOSE&CUFFS--1.650IAX27.0 L	1
32	111719	WHEEL--10.0DIA,.503BORE,1.75HB	2
33	111720	SPACER,STL--.384X.500,1.820L,Z	2
34	004384	WSHR FLT .406ID.8750D.064T STL	4
35	223225	SCR CAP HEX HD .375-16X4.00L	2
36	111674	HUB CAP	2
37	222262	NUT,HEX LOCK--.312-24,NYLDC,ZN	2
38	001304	SCR MACH FLAT HD 10-32X.500L	8
39	223082	SCR MACH FLAT HD 10-32X.750L	4
40	223132	SCR CAP HEX HD .312-24X1.50L	2
41	222223	NUT,HEX LOCK-- 10-32,ZINC	12
42	715401	NUT,SPECIAL--I INCH PIPE NUT	1
43	222031	ELBOW,PIPE--I IPTX1 IPT,GALV	1
44	111715	WHEEL BRACKET L	1
45	715403	PIPE 1 INCH	1
46	049082	CLAMP,HOSE--1.50 MAX DIA,WORM	1
47	003368	NUT,HEX LOCK--.375-16,ZN PLT	2
48	223145	SCR SET CUP PT .250-20X.250L	2

SEQ NO.	PART NO.	PART NO.	DESCRIPTION	QTY.
1	053427	050031	RING DUST BAG SC460	1
2	111218	E13075	ASM. FILTER—PRIMARY	1
3	111023	111023	DUST BAG WIRE	1
4	111493	111493	ALUMINUM FOIL .005X1X3	1
5	661766	661766	PAPER FILTER BAGS (PKG. OF 10)	



THE KENT LIMITED WARRANTY

Your Kent equipment which has been manufactured, tested and inspected in accordance with carefully specified engineering requirements, is warranted to be free from defects in material and workmanship. This warranty is, however, subject to the following qualifications, conditions, and limitations which are set forth to provide you and all users of the Kent equipment with information concerning the duration, extent, availability, and applicability of this Kent limited warranty, the procedure to be taken to obtain its performance, and other information concerning the Kent warranty policy.

The Kent Limited Warranty is extended to the original end user as follows:

Wet/Dry tank vacuums except environmental vacuums HEPA filter equipped 3 year parts replacement and 1 year service labor warranty.

Environmental vacuums HEPA filter equipped 1 year parts replacement and service labor warranty.

Replacement parts guaranteed for 90 days from date of installation against defects in material and workmanship.

The 10 year poly component replacement warranty with 1 year service labor extends for a period of ten (10) years from the date of the original purchase of the Kent equipment by the original purchaser. This warranty will not cover damage attributable to the following:

- (1) Improper, unreasonable or negligent use or abuse of the equipment.
- (2) Use of equipment with hot water or high temperature above 130 degrees Fahrenheit (54 degrees centigrade)
- (3) "Warpage", "Creepage", or "Distortion" of part so long as the same does not interfere with normal operation.
- (4) Abrasions or punctures of the equipment.

The start date of the warranty coverage shall be the purchase date of the original end user or six months from the date the machine was shipped from the factory, whichever comes first.

PARTS OF KENT EQUIPMENT NOT COVERED BY WARRANTY

Certain parts of Kent equipment require replacement in the ordinary course of use due to normal wear by reason of their characteristics. These are normal wear items such as cords, gaskets, switches, bumpers, carbon brushes, handle grips, bags, hoses, bearings, etc.

EXCEPTIONS AND EXCLUSIONS FROM WARRANTY

This equipment is required to be used on electric current as indicated on the data plate. Otherwise damage, defects, malfunctions or other failures of the equipment arising from use on electric current not as indicated are excepted and excluded from this warranty. Defects, malfunctions, failure or damage of the equipment caused by improper, unreasonable or negligent use or abuse while in the possession of the purchaser are likewise excluded from this warranty. If repair is done on your equipment by anyone other than those designated as authorized to perform such work without first having obtained factory instructions, The Kent Company at its sole option, may determine that this warranty will not apply and that reimbursement for such repair will not be made because of the failure to comply with such factory specified instructions.

PROCEDURE TO BE TAKEN TO OBTAIN PERFORMANCE OF WARRANTY REPAIR

To secure repair of the equipment or any warranted parts under this warranty, the following procedure should be taken. The inoperative equipment or warranted parts, together with satisfactory evidence of the purchase date, must be delivered with shipping and delivery charges prepaid, to one of the following:

- (1) The dealer from whom purchased;
- (2) Any Kent distributor's service department in the United States;
- (3) Any Kent authorized service station in the United States.

If you are unable to locate any of the foregoing, you may write or otherwise communicate with The Kent Company for instructions before repair service is performed by anyone else. In such event, The Kent Company will provide either the location of a closely available Kent distributor service department or Kent authorized service station or other factory instructions. Upon compliance with the above procedure, all warranted defects will be repaired, at no additional charge or costs to the customer, and the repaired product returned to the customer, with all shipping and delivery charges prepaid. In following the procedures above set forth, PLEASE MAKE CERTAIN to state the Kent model, type and serial number as shown on the dataplate of the equipment.

REPLACEMENT

In the event of a defect, malfunction or failure of your Kent equipment or any warranted part to conform with this warranty, The Kent Company may, at its sole option and own expense, replace the equipment or any warranted part with another new identical or reasonably equivalent model or part in lieu of repairing the defect.

NO REFUND OF PURCHASE PRICE

The Kent Company will not, as a matter of its warranty policy, refund the customer's purchase price.

WARRANTY REGISTRATION CARD FOR YOUR KENT EQUIPMENT AND REQUEST FOR INFORMATION

Your Kent Company distributor from whom you purchased your equipment is responsible for the registration of your warranty with the factory. We ask that you cooperate with your distributor in supplying the necessary information on the warranty card so that we may better serve you. Any information or questions you may have concerning your Kent equipment or this warranty may likewise be secured from the factory. This warranty gives you specific legal rights, and you may also have other rights which vary from state to state.