



Electronic Service Manuals

This electronic document is provided as a service to our customers. We do not create the contents of the information contained in this document. Should you have detailed questions pertaining to the information contained in this document, you may contact Michco, or the manufacturer which provided the original information in this electronic deliverable. Michco's only part in this electronic deliverable was the electronic assembly process. By providing this manual on line we are not guaranteeing parts availability.

You may contact Michco through the following methods:

Phone (517) 484-9312 or (800) 331-3339

2011 N. High St. -- Lansing, Michigan -- 48906

Fax: (517) 484-9836

Email: CustServe@Michco.com

Web site: www.Michco.Com

Parts Web site: www.FloorMachineParts.Com

Order Parts on Line at:

www.FloorMachineParts.Com

Directly to Parts & Service:

By Email: **Shop@Michco.com**

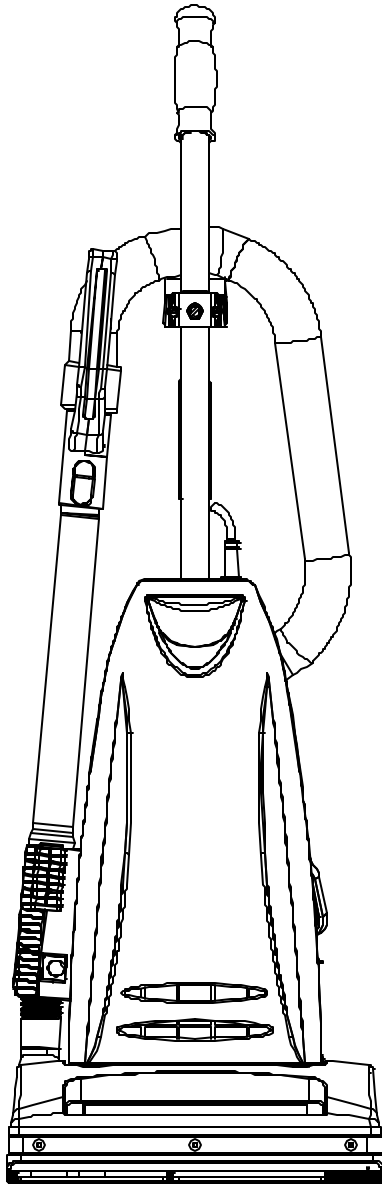
By Fax: (517) 702-2041

By Voice: Use numbers above.

Serving the Cleaning Industry Since 1922

Notice: All copyrighted material remains property of original owners, all trademarks are property of respective owners. Manuals are subject to Manufacturer's reproduction limitations. Originals or reproductions were provided by manufacturers through a request. We make no warranty as to the correctness of information provided in this document and you assume all risk. By placing these manuals on line we are not declaring our corporation to be an manufacturer authorized dealer or provider, please check our web site for authorized manufacturers we represent.

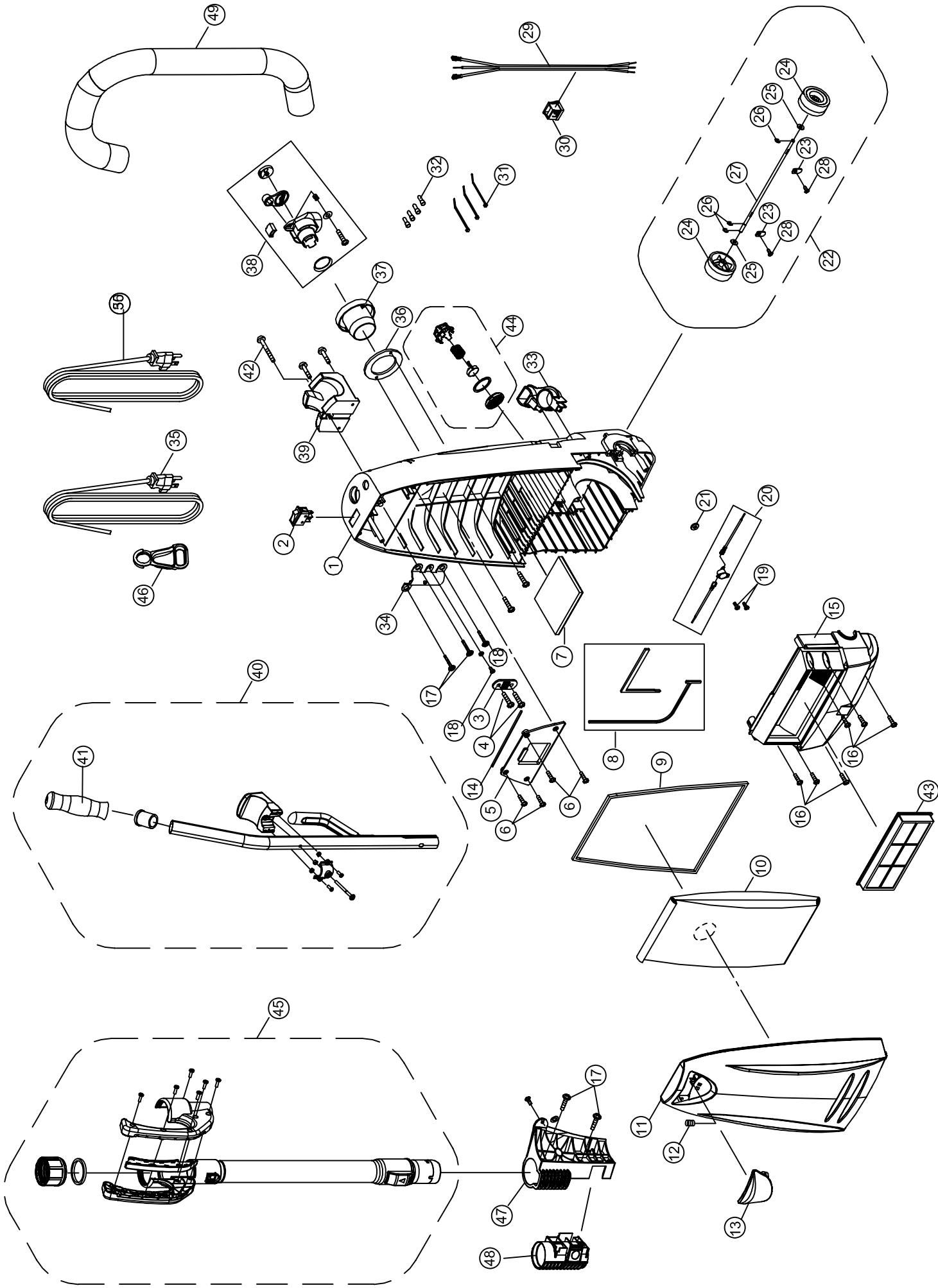
PARTS LIST



MODEL CMPS-QD

VPPB-CMPS-QD

A

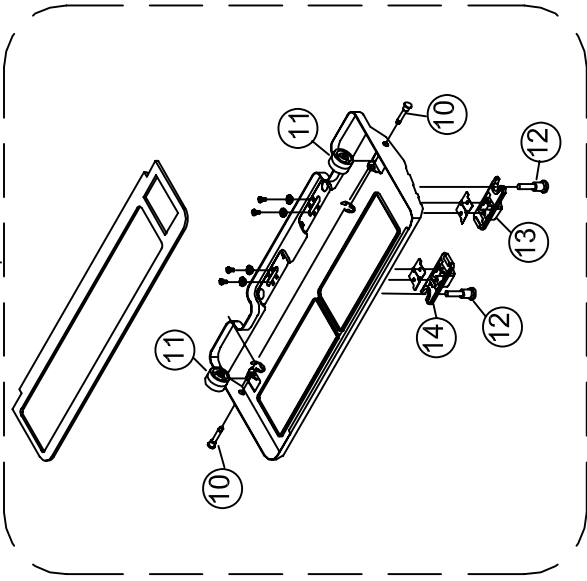
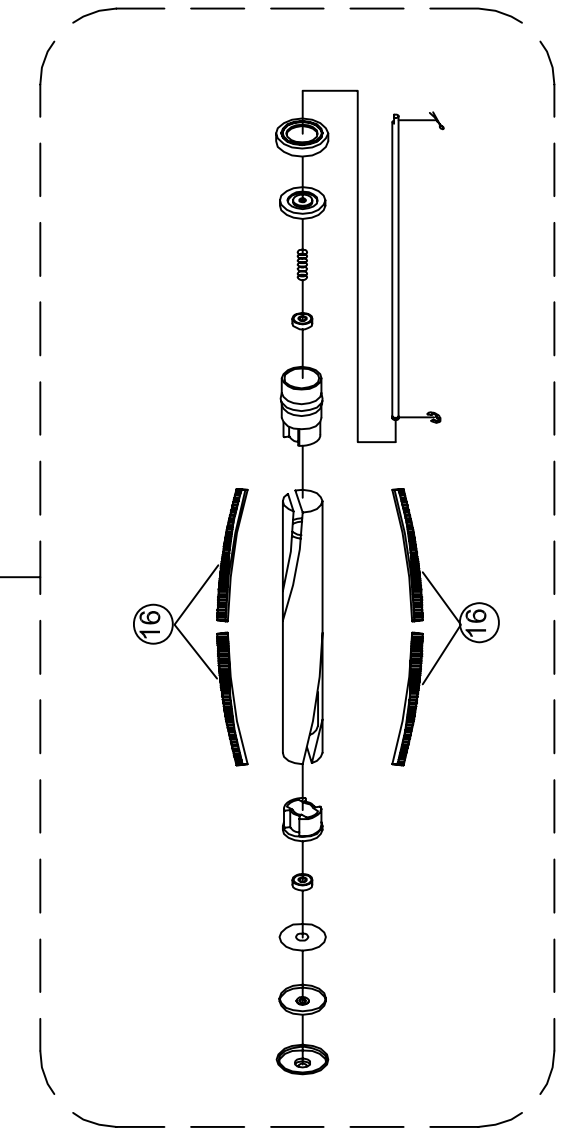
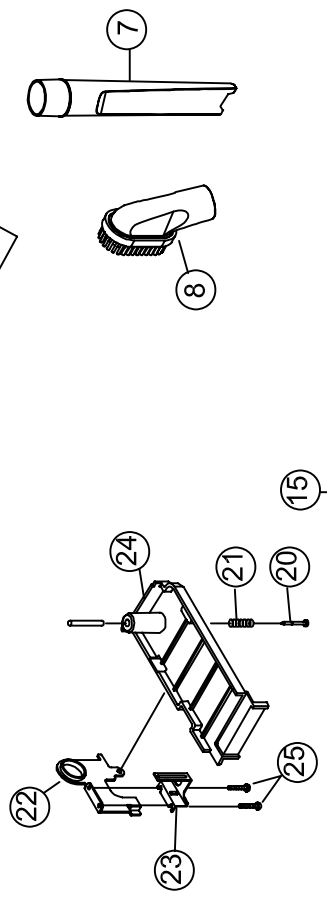
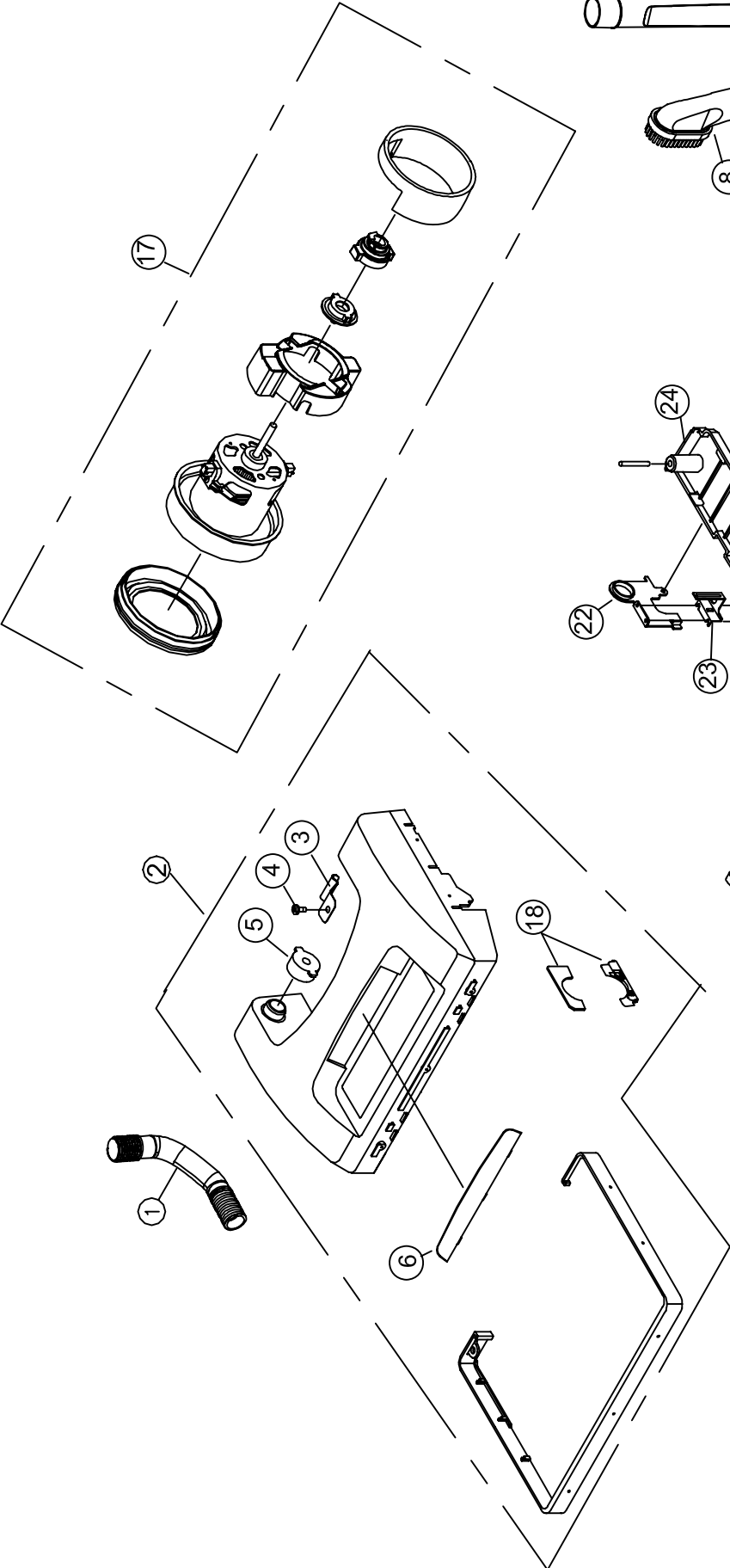


DRAWING A

CMPS-QD

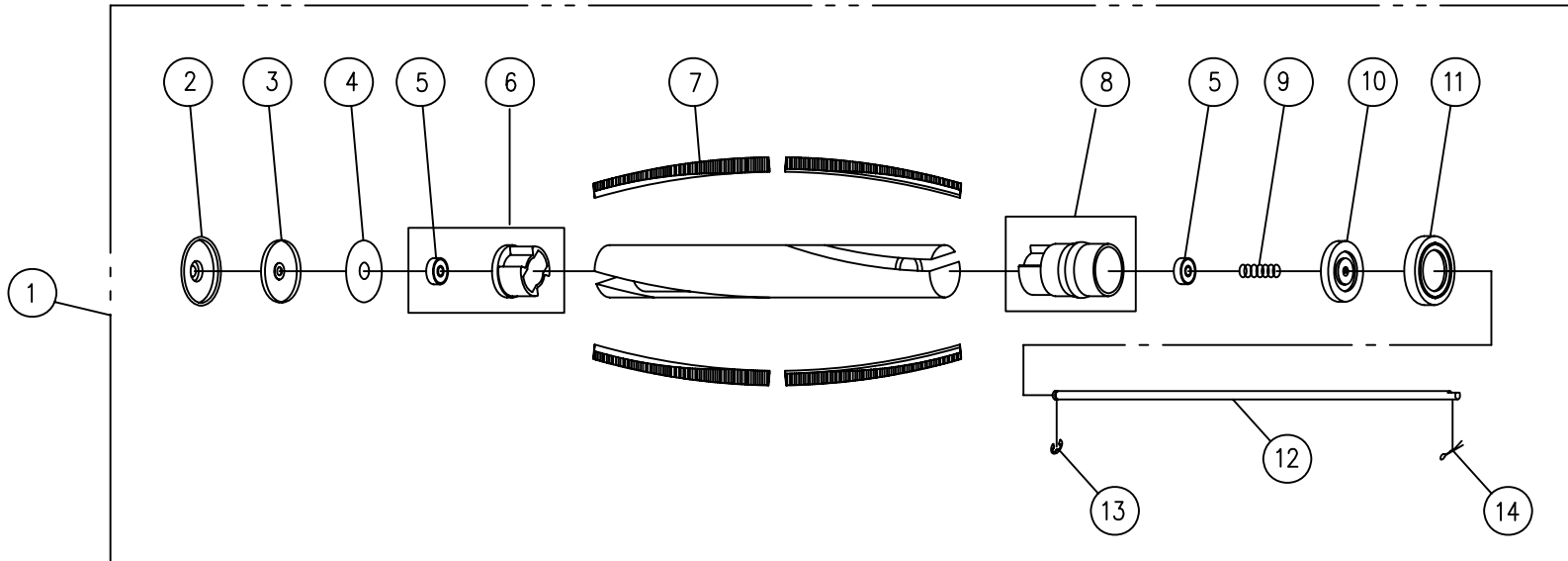
KEY	ITEM	DESCRIPTION	KEY	ITEM	DESCRIPTION
1	CM021001	Dust Compartment	26	A732-0300	E-Ring
2	25.104	Switch	27	54.135	Rear Wheel Shaft
3	84.100	Internal Cord Strap	28	A732-8500	Screw
4	A732-1100	Screw	29	B224-3014B	Motor Lead Cord
5	84.102	Switch Cover	30	84.109	Wire Bushing
6	A732-4500	Screw	31	A732-0100	Zip Tie
7	CMPS-SF	Secondary Filter	32	B123-0100	Wire Connector
8	84.103	Seal Kit	33	CM021007	On-Board Tools Holder
9	84.104	Dust Compartment Seal	34	CM021009	Handle Retainer
10	CMPS-12	Paper Bag	35	CMPS-50C	Power Cord
11	CM021004	Dust Cover	36	Z19	Swivel Inlet Gasket
12	24.700	Latch Spring	37	B211-0230	Paper Bag Inlet
13	84.105	Dust Cover Latch	38	C625-0131	Suction Inlet Assembly
14	84.106	Switch Cover Seal	39	54.140	Hose Hanger
15	CM021005	Motor Cover	40	CMQD-TUBE	Handle Assembly Complete
16	CM031006	Screw	41	CMQD-GRIP	Rubber Handle Grip
17	A732-1100	Screw	42	A232-0100	Handle Screw
18	84.110	Screw	43	CMPS-HEPA	HEPA Exhaust Final Filter
19	A732-7300	Screw	44	CM021021	Suction Relief Valve Assembly
20	B333-0400B	Thermal Reset Switch	45	CMQD-HANDLE	Handle Grip Assembly
21	B333-0600	Temperature Switch Seal	46	B352-6900	Cord Clip
22	CM021006	Rear Wheel and Axle	47	CMQD-WNDHLD	Quick Draw Attachment Holder
23	54.136	Washer	48	CMQD-CO	Quick Draw Clean Out
24	B210-0531	Rear Wheel	49	CMQD-HOSE	Nozzle Hose
25	A328-0100B	Washer			

B



KEY	ITEM	DESCRIPTION
1	CMQD-NOZHOSE	Nozzle Hose
2	CM011002	Nozzle Housing
3	53.088B	Handle Release Spring
4	CM031000	Screw
5	84.200	Pivot Sleeve Bushing
6	CM011001	Lens
7	CM040002	Crevice Tool
8	CM040003	Round Brush
9	CM011007	Base Plate Assembly
10	B010-0500	Base Plate Wheel Axle
11	B010-0413	Base Plate Wheel
12	CM011012	Base Plate Latch Stud
13	CM011008	Base Plate Latch Left
14	CM011009	Base Plate Latch Right
15	CMPS-10130	Brush Roll Assembly
16	CMP-STRIP	Agitator Brush
17	CM011010	Motor
18	B017-1200	Venting Support Fitting
19	CMPS-BB	Belt
20	CM031004	Screws
21	CM031005	Spring
22	CM011004	Pedal Frame
23	B014-0500	Belt Cover
24	CM011006	Pedal
25	A732-7300	Screws

AGITATOR GROUP CMPS-QD



Key	Part No	Description
1	CMPS-10130	Agitator Assembly Complete
2	B012-0214	Rubber End Cover Left
3	B012-0700	End Cap Left
4	B012-0600	Agitator Bearing Felt Cover
5	B012-1400	Agitator Bearing
6	C012-1500	Agitator Bearing Holder Assembly
7	CMPS-STRIP	Agitator Brush Strip 10.3mm
8	C012-0914	Non Clutch Agitator Pulley With Bearing
9	B624-0100	Spacing Spring
10	B012-0800	End Cap Right
11	B012-0114	Rubber End Cover Right
12	B012-1000	Agitator Shaft
13	A732-0200	E-Clip 4mm
14	A732-0400	Agitator Spring Clip