



Electronic Service Manuals

This electronic document is provided as a service to our customers. We do not create the contents of the information contained in this document. Should you have detailed questions pertaining to the information contained in this document, you may contact Michco, or the manufacturer which provided the original information in this electronic deliverable. Michco's only part in this electronic deliverable was the electronic assembly process. By providing this manual on line we are not guaranteeing parts availability.

You may contact Michco through the following methods:

Phone (517) 484-9312 or (800) 331-3339

2011 N. High St. -- Lansing, Michigan -- 48906

Fax: (517) 484-9836

Email: CustServe@Michco.com

Web site: www.Michco.Com

Parts Web site: www.FloorMachineParts.Com

Order Parts on Line at:

www.FloorMachineParts.Com

Directly to Parts & Service:

By Email: **Shop@Michco.com**

By Fax: (517) 702-2041

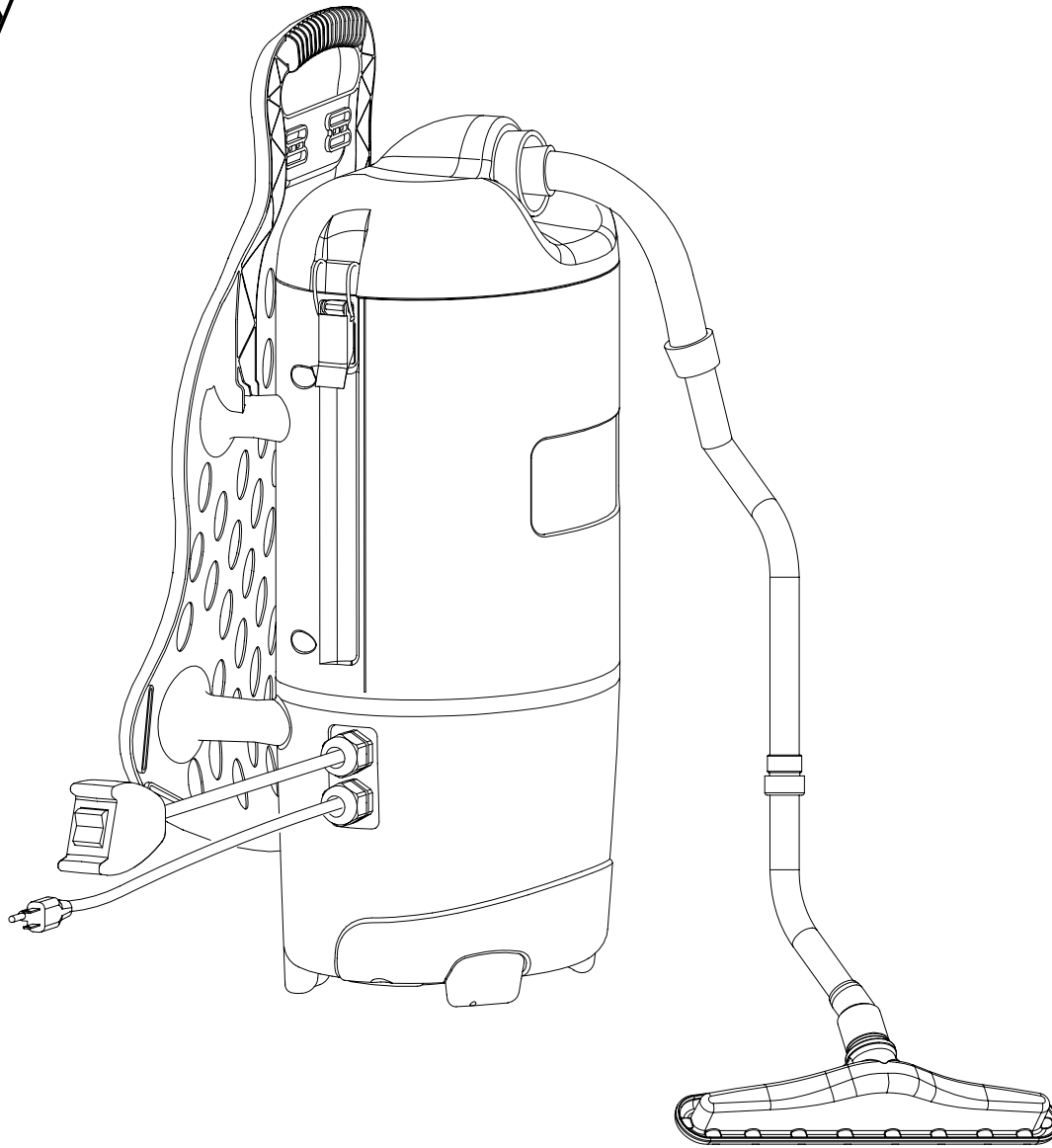
By Voice: Use numbers above.

Serving the Cleaning Industry Since 1922

Notice: All copyrighted material remains property of original owners, all trademarks are property of respective owners. Manuals are subject to Manufacturer's reproduction limitations. Originals or reproductions were provided by manufacturers through a request. We make no warranty as to the correctness of information provided in this document and you assume all risk. By placing these manuals on line we are not declaring our corporation to be an manufacturer authorized dealer or provider, please check our web site for authorized manufacturers we represent.

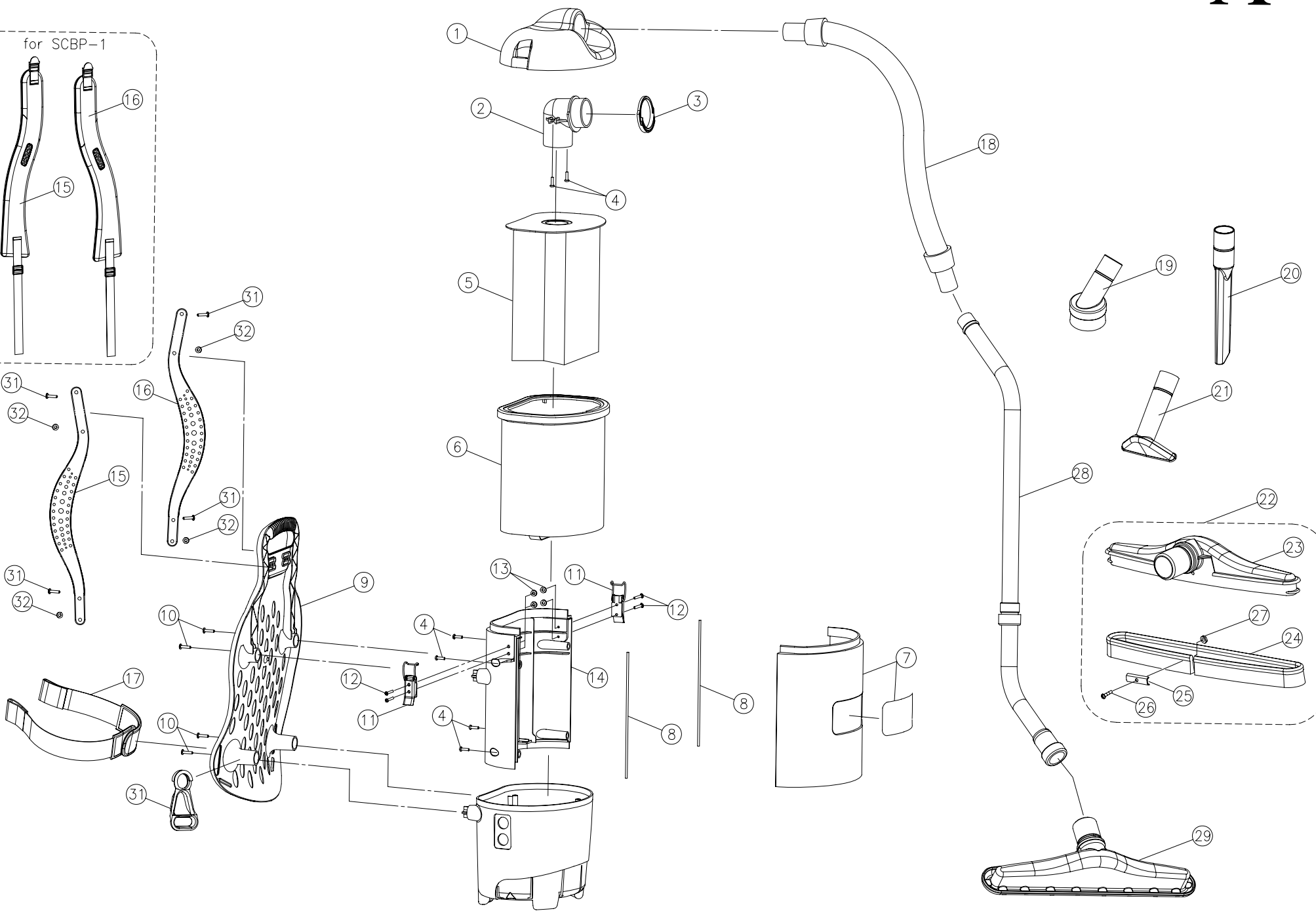
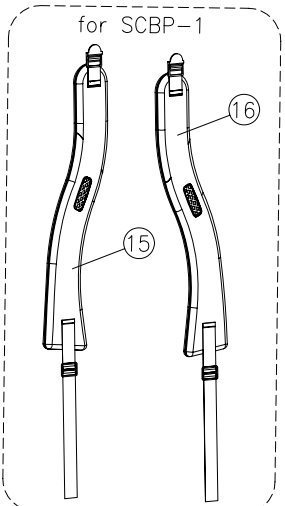
Parts List

Tacony



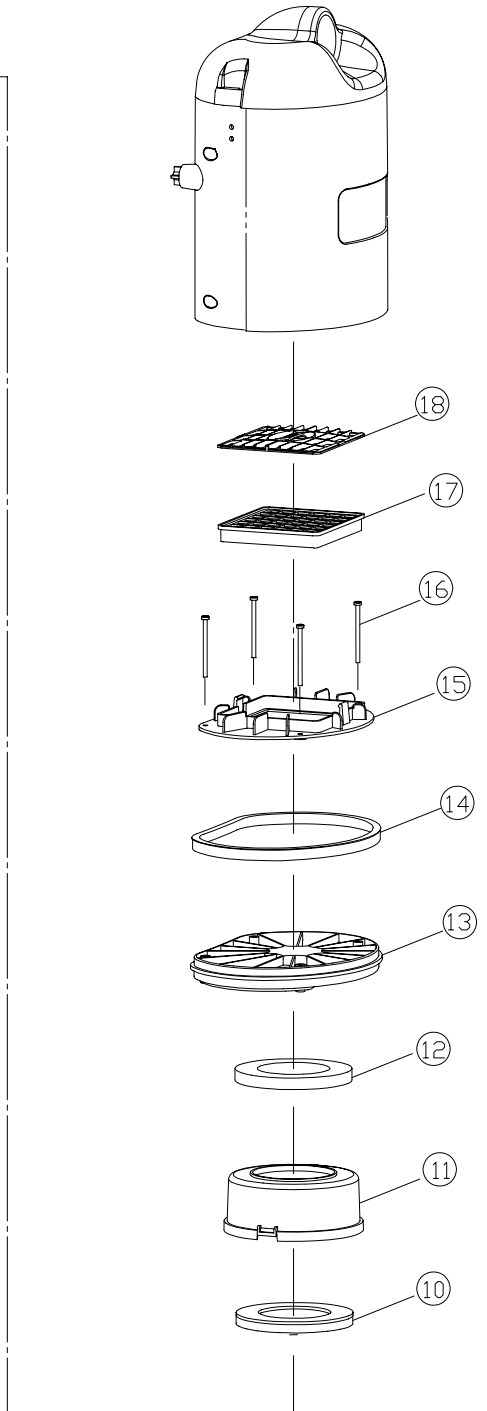
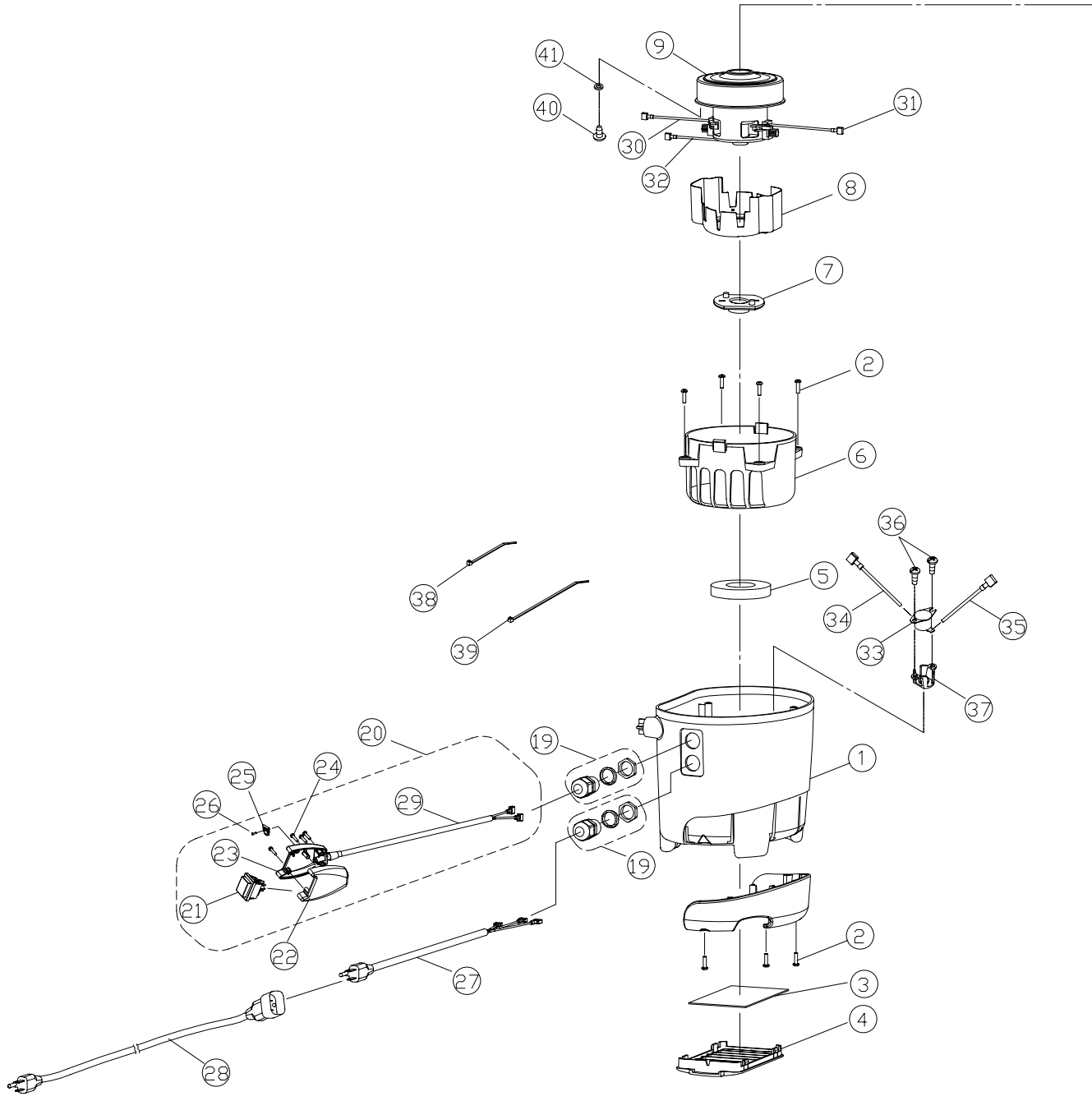
CMBP-6

A



CMBP-6 Parts List

A		
Key	Item Number	Description
1	B352-0500	Cover
2	54.107	Hose inlet
3	B352-4800	Inlet seal
4	A732-8300	Phillips pan head screw 8.625
5	06.415	Paper bag 10pk
6	06.083	Shake out cloth bag
7	CMBB-01	Front plate & Badge
8	B352-6100	Bag compartment seal
9	54.100 o.s.	Back rest assembly items 32 33 34 39 40
10	A352-8100	Phillips pan head screw 10.750
11	54.112	Latch
12	A732-8300	Latch screw
13	A732-9700	Washer
14	54.109	Back plate
15	B352-7000	Shoulder harness right padded nylon
16	B352-7100	Shoulder harness left padded nylon
17	B352-6600	Waist belt
18	19.452	Hose assembly
19	10.308	Dust brush assembly
20	05.16	Crevice tool
21	05.161	Upholstery tool
22	10.309	Bare floor tool
28	26.125	Telescopic wand assembly
29	10.31	Carpet tool



CMBP-6

Parts List

B		
Key	Item Number	Description
1	54.101	Motor compartment
2	A732-8300	Phillips pan head screw 8.625
3	06.011	Post filter
4	54.104	Post filter cover
5	B352-1900	Bottom motor mount
6	B352-5300	Motor shroud cover – bottom
7	B352-1800	Top motor mount
8	B113-0915	Motor shroud bracket
9	20.011	Motor assembly
10	B352-2000	Motor seal
11	B352-5400	Motor shroud cover - top
12	B352-1800	Top motor mount
13	B352-0700	Motor cover
14	B352-1200	Body seal
15	B352-0800	Secondary filter plate
16	A430-0205	Phillips pan head screw 8-16 X 2.50
17	06.434	Secondary filter - pleated
18	54.105	Secondary filter cap
19	B352-6800	Strain relief
20	54.114	Switch & harness assembly
21	54.113	Power harness cord
28	14.206	Extension cord yellow 50'
29	54.11	Thermal protector switch