



Electronic Service Manuals

This electronic document is provided as a service to our customers. We do not create the contents of the information contained in this document. Should you have detailed questions pertaining to the information contained in this document, you may contact Michco, or the manufacturer which provided the original information in this electronic deliverable. Michco's only part in this electronic deliverable was the electronic assembly process. By providing this manual on line we are not guaranteeing parts availability.

You may contact Michco through the following methods:

Phone (517) 484-9312 or (800) 331-3339

2011 N. High St. -- Lansing, Michigan -- 48906

Fax: (517) 484-9836

Email: CustServe@Michco.com

Web site: www.Michco.Com

Parts Web site: www.FloorMachineParts.Com

Order Parts on Line at:

www.FloorMachineParts.Com

Directly to Parts & Service:

By Email: **Shop@Michco.com**

By Fax: (517) 702-2041

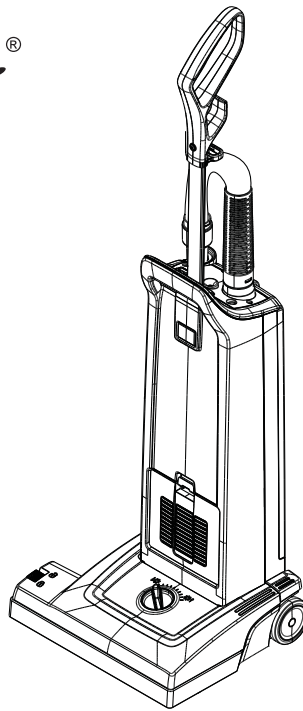
By Voice: Use numbers above.

Serving the Cleaning Industry Since 1922

Notice: All copyrighted material remains property of original owners, all trademarks are property of respective owners. Manuals are subject to Manufacturer's reproduction limitations. Originals or reproductions were provided by manufacturers through a request. We make no warranty as to the correctness of information provided in this document and you assume all risk. By placing these manuals on line we are not declaring our corporation to be an manufacturer authorized dealer or provider, please check our web site for authorized manufacturers we represent.

SPARE PARTS LIST

CarpetMaster[®]



DESCRIPTION	PLAN
Wiring diagrams and overview	2,3
Motors and electrical parts	4
Brush parts	6
Container parts	8
Filters 10	
Nozzle and tube	12
Locations 15	
Warranty information	16

WHEN ORDERING PARTS

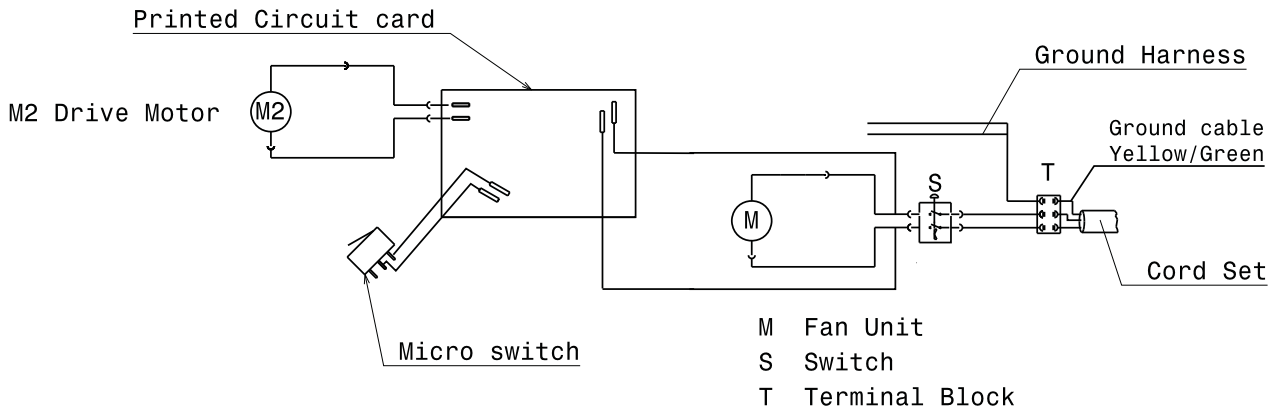
- * Use the digit numbers from the "Part No." columns in this spare parts list.
- * Specify the model and serial number of the machine.
- * Use the space below to record the model and serial number for future reference.

Model _____ Serial no. _____

Clarke reserves the right to make changes or improvements to its machine without notice.
Always use genuine Clarke Parts for repair.

2100 Highway 265, Springdale, Arkansas 72764.

Double motor version 212, 215, 218 - Grounded



Single motor version 112, 115 - Grounded

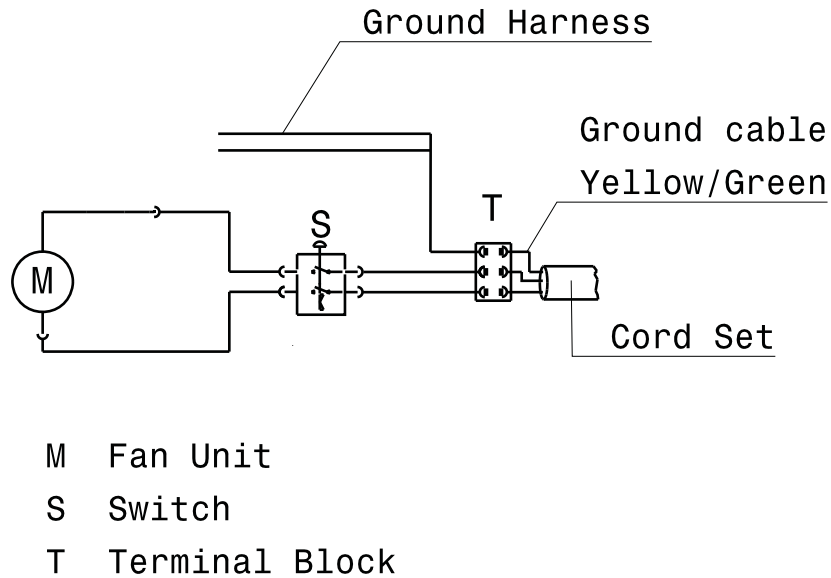


Table of Contents

CLARKE CARPETMASTER 112, 215, 218

Body	3
Base	5
Filters	7
Nozzles and tubes	9

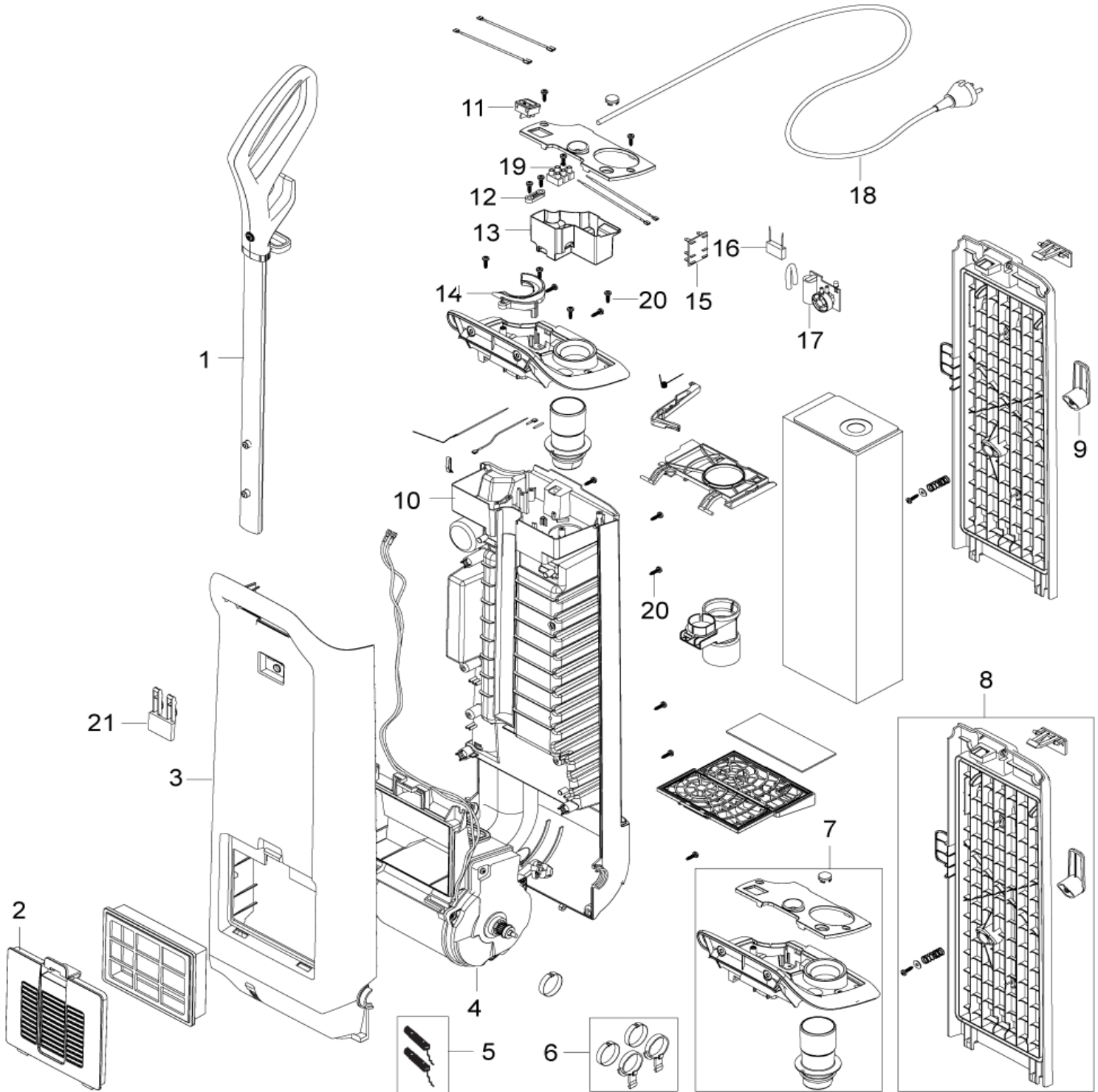
Body

CLARKE CARPETMASTER 112, 215, 218

12-05-2010

Part List ID
GU1206

3



Body

CLARKE CARPETMASTER 112, 215, 218

12-05-2010

Part List ID

GU1206

4

Pos	Part no.	Qty	Description	EAN	
1	147 0833 500	1	HANDLE COMPLETE	7319519663	
2	147 0965 510	1	COVER EXHAUST FILTER.BLUE	7319519663	
3	147 0847 510	1	COVER BODY FRONT. BLUE	7319519664	
4	147 0864 510	1	MOTOR CASSETTE 110-120V	7319519662	
5	147 1326 500	1	CARBON BRUSH KIT	7319519664	
6	147 0927 500	1	JOINT BASE TO BODY W RING	7319519670	
7	147 0842 510	1	COVER TOP KIT. BLUE	7319519664	
8	147 0857 510	1	LID CPL. BLUE	7319519663	
9	147 0852 500	1	HOOK FOR CORD	7319519663	
10	147 0850 510	1	COVER BODY REAR	7319519663	
11	140 5496 510	1	SWITCH UL KIT	7319519631	
12	056 1014 060	1	ANTI-STRAIN CLIP BLACK	7319519352	
13	147 0843 500	1	ELECTRIC BOX	7319519662	
14	147 1062 500	1	HOLDER TUBE	7319519663	
15		1	BOARD ANTI STATIC	Use pos. 17	7319519632
16	140 8166 010	1	CAPACITOR	7319519603	
17	147 0987 500	1	BAG FULL DEVICE	7319519675	
18	140 3859 640	1	CORD SET US/TW 15M YELLOW	7319519663	
19	82240100	1	CONNECTOR	7319519493	
20	140 9214	22	SCREW PTK TORX 40X14 MM FZB	7319519418	
21	107401794	1	MUSTANG BUTTON BLACK	5703887107	

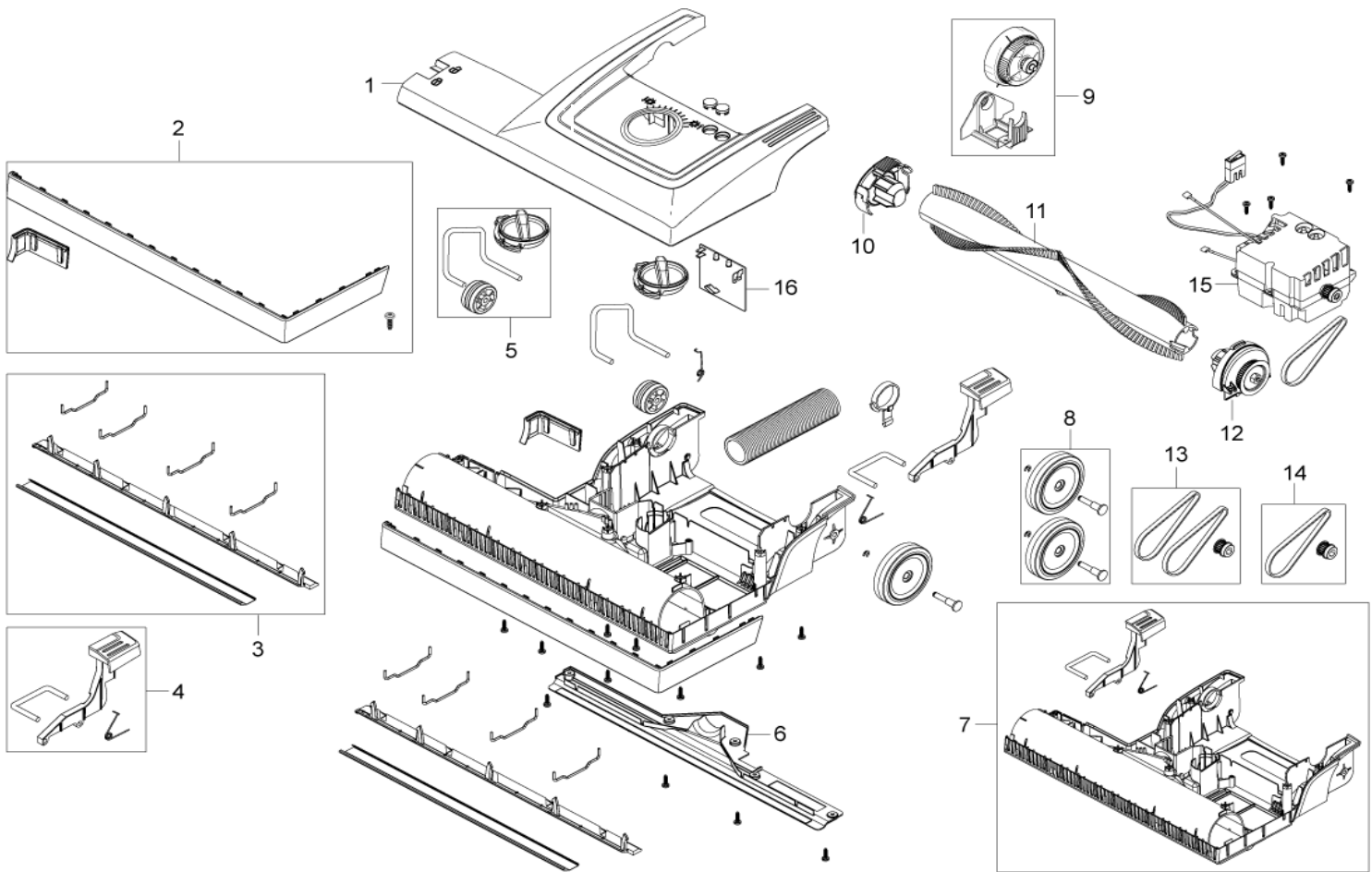
Base

CLARKE CARPETMASTER 112, 215, 218

12-05-2010

Part List ID
MASTER04

5



Base

CLARKE CARPETMASTER 112, 215, 218

12-05-2010

Part List ID

MASTER04

6

Pos	Part no.	Qty	Description		EAN
1	147 0924 510	1	COVER BRUSH HOUSE. BLUE	112	7319519664
1	147 0924 610	1	COVER BRUSH HOUSE. BLUE	112 incl. lens	7319519664
1	147 0925 510	1	COVER BRUSH HOUSE. BLUE	215	7319519663
1	147 0925 610	1	COVER BRUSH HOUSE. BLUE	215 incl. lens	7319519663
1	147 0926 510	1	COVER BRUSH HOUSE. BLUE	218	7319519664
2	147 0886 500	1	BUMPER KIT 12 INCH/305		7319519663
2	147 0889 500	1	BUMPER KIT 15 INCH/355		7319519663
2	147 0892 500	1	BUMPER KIT 18 INCH/455		7319519663
3	147 0992 500	1	SUPPORT BRUSH KIT 12INCH	112	7319519663
3	147 0992 510	1	SUPPORT BRUSH KIT 15INCH	215	7319519663
3	147 0992 520	1	SUPPORT BRUSH KIT 18INCH	218	7319519663
4	147 0935 500	1	PEDAL W SHAFT AND SPRING		7319519670
5	147 0901 500	1	ROLLER KIT		7319519663
6	147 0988 500	1	BRUSH SHOE 12 INCH/305		7319519663
6	147 0989 500	1	BRUSH SHOE 15/355		7319519663
6	147 0990 500	1	BRUSH SHOE 18/455		7319519663
7	147 0885 500	1	CHASSIS 12 INCH /305		7319519663
7	147 0888 500	1	CHASSIS 15 INCH/355		7319519663
7	147 0891 500	1	CHASSIS 18 INCH/455		7319519663
8	147 0898 500	1	WHEEL KIT		7319519663
9	147 0906 500	1	CLUTCH AND BEARING KIT		7319519663
10	147 0944 500	1	COVER		7319519663
11	147 0930 500	1	BRUSH 12 INCH/305		7319519663
11	147 0930 510	1	BRUSH 15 INCH/355		7319519663
11	147 0930 520	1	BRUSH 18 INCH/455		7319519663
12	147 0913 500	1	BEARING		7319519663
13	147 0905 500	1	DRIVE BELT KIT		7319519663
14	147 0905 510	1	DRIVE BELT KIT DOUBLE MOTOR		7319519664
15	147 0984 510	1	MOTOR CASSETTE 100-120V		7319519662
16	107401946	1	PCB 230V KIT		5703887108
16	107401947	1	PCB 120V KIT		5703887108

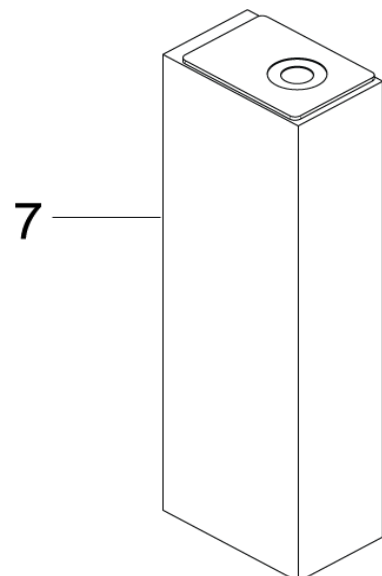
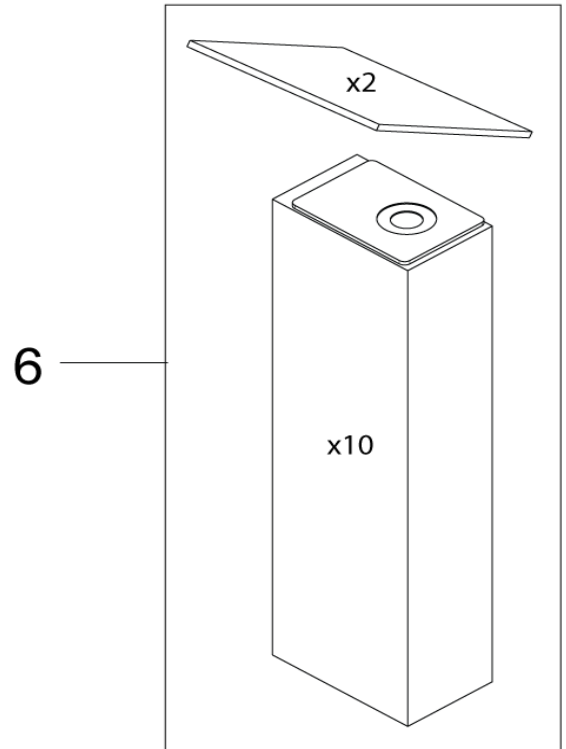
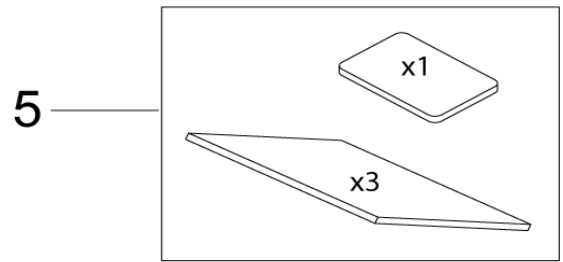
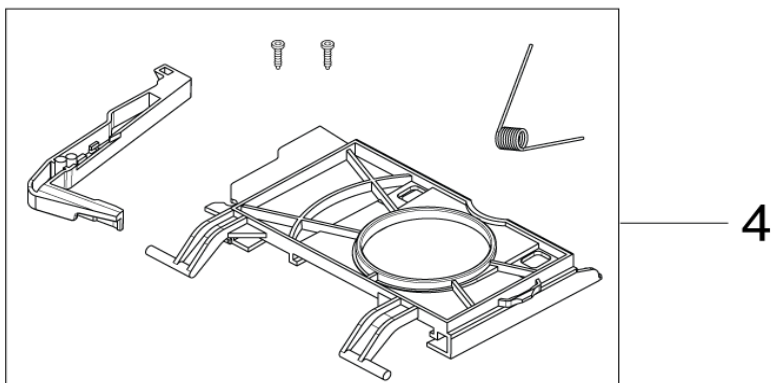
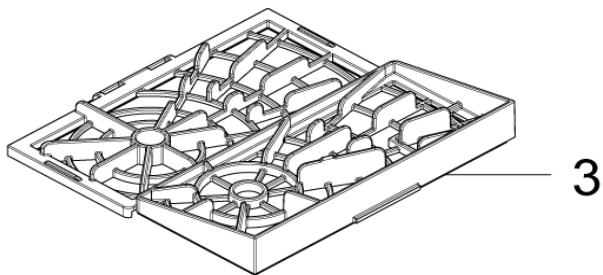
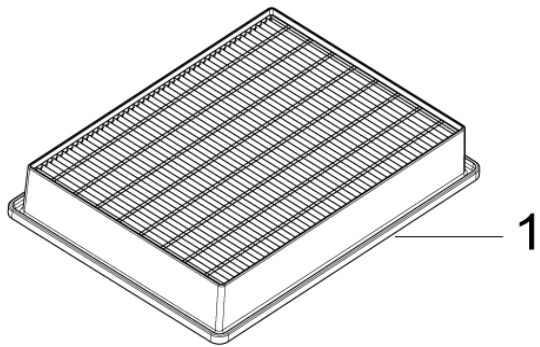
Filters

CLARKE CARPETMASTER 112, 215, 218

12-05-2010

Part List ID B10939

7



Filters

CLARKE CARPETMASTER 112, 215, 218

12-05-2010

Part List ID B10939

8

Pos	Part no.	Qty	Description	EAN
1	147 1250 600	1	HEPA-FILTER. H13	7319519664
2	147 0966 500	1	EXHAUST FILTER	7319519663
3	147 0958 500	1	HOLDER PRE FILTER KIT	7319519663
4	147 0854 500	1	HOLDER DUST BAG KIT	7319519663
5	147 0960 500	1	PRE FILTER KIT	7319519663
6	147 1058 500	1	DUST BAG 408X78 10-P	7319519663
7	147 1059 500	1	DUST BAG REUSEABLE	7319519664

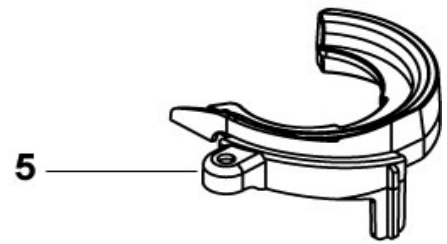
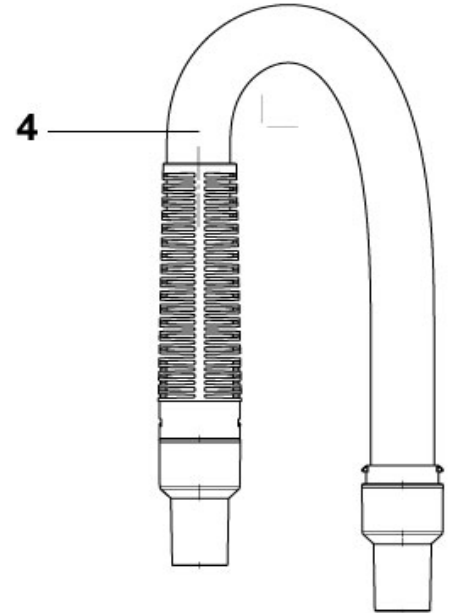
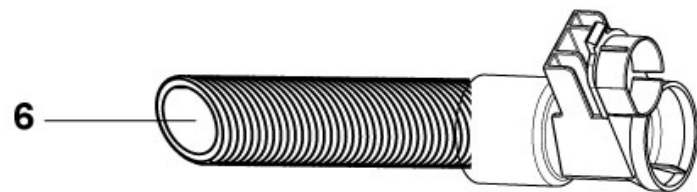
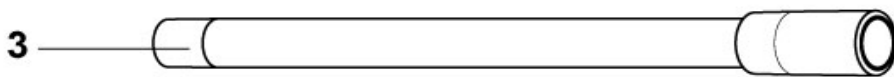
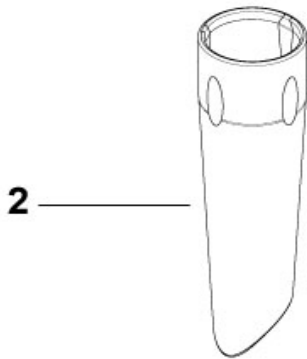
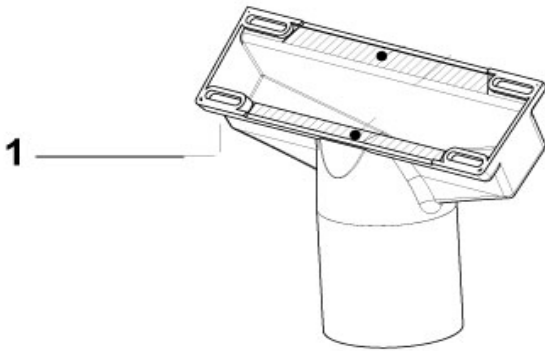
Nozzles and tubes

CLARKE CARPETMASTER 112, 215, 218

12-05-2010

Part List ID
MASTER09

9



Nozzles and tubes

CLARKE CARPETMASTER 112, 215, 218

12-05-2010

Part List ID
MASTER09

10

Pos	Part no.	Qty	Description	EAN
1	147 1205 500	1	UPHOLSTERY NOZZLE	7319519663
2	147 1203 500	1	CREVICE NOZZLE 35	7319519663
3	147 0851 500	1	EXTENSION TUBE 35MM	7319519664
4	147 0950 500	1	HOSE STRETCHABLE	7319519663
5	147 1062 500	1	HOLDER TUBE	7319519663
6	147 0919 500	1	ADAPTER BASE TO TUBE W.HOSE	7319519670