



Electronic Service Manuals

This electronic document is provided as a service to our customers. We do not create the contents of the information contained in this document. Should you have detailed questions pertaining to the information contained in this document, you may contact Michco, or the manufacturer which provided the original information in this electronic deliverable. Michco's only part in this electronic deliverable was the electronic assembly process. By providing this manual on line we are not guaranteeing parts availability.

You may contact Michco through the following methods:

Phone (517) 484-9312 or (800) 331-3339

2011 N. High St. -- Lansing, Michigan -- 48906

Fax: (517) 484-9836

Email: CustServe@Michco.com

Web site: www.Michco.Com

Parts Web site: www.FloorMachineParts.Com

Order Parts on Line at:

www.FloorMachineParts.Com

Directly to Parts & Service:

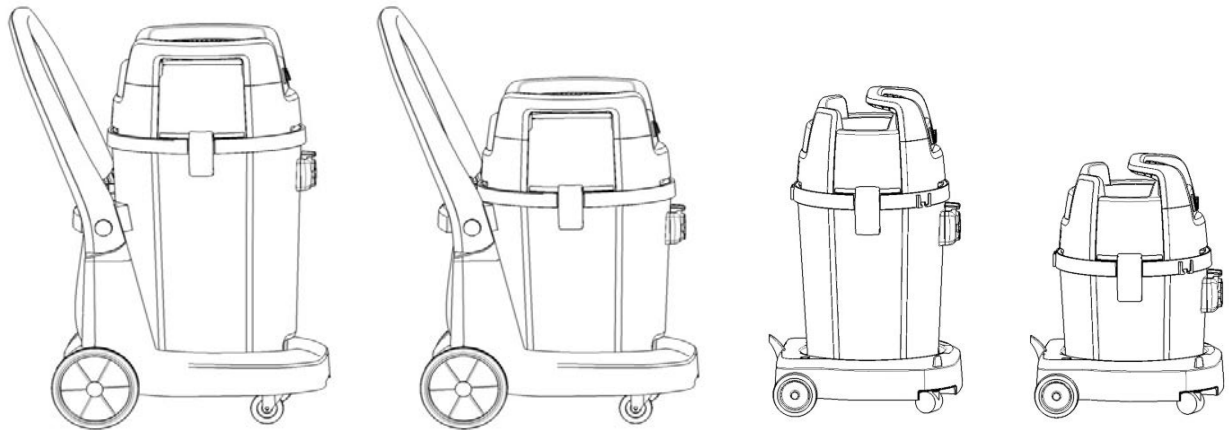
By Email: **Shop@Michco.com**

By Fax: (517) 702-2041

By Voice: Use numbers above.

Serving the Cleaning Industry Since 1922

Notice: All copyrighted material remains property of original owners, all trademarks are property of respective owners. Manuals are subject to Manufacturer's reproduction limitations. Originals or reproductions were provided by manufacturers through a request. We make no warranty as to the correctness of information provided in this document and you assume all risk. By placing these manuals on line we are not declaring our corporation to be an manufacturer authorized dealer or provider, please check our web site for authorized manufacturers we represent.

**DESCRIPTION****PLAN**

GD 320

B - 5.9.5 - 2

GWD 320, GWD 335

B - 5.9.5 - 4

GWD 320 Craftsman

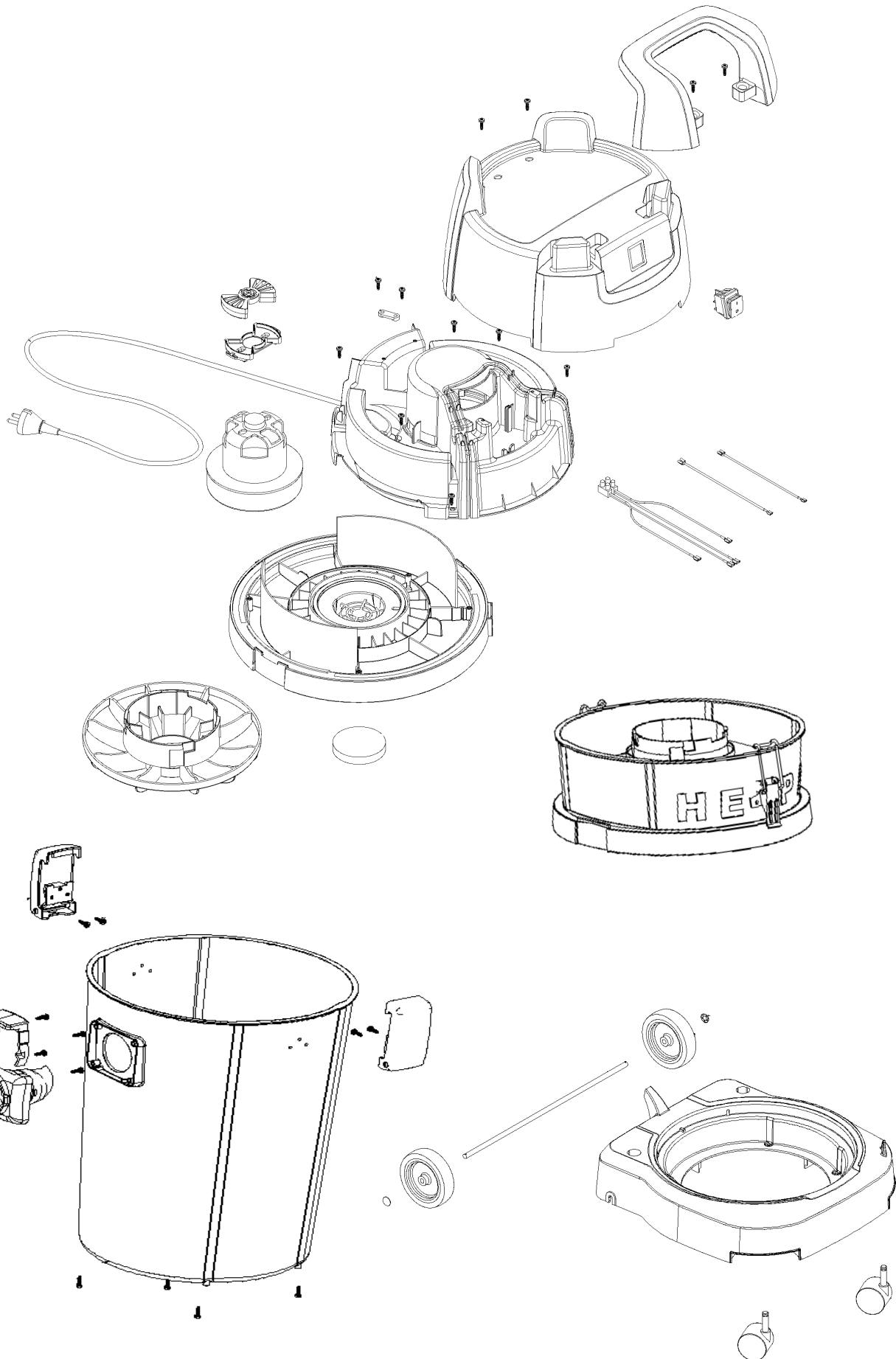
B - 5.9.5 - 6

GWD 350, GWD 375

B - 5.9.5 - 8

GWD 350, GWD 375 Two motor versions

B - 5.9.5 - 10



To be performed by a skilled or instructed person only!

Disconnect the vacuum cleaner from the power supply before starting the work!

NOTE! Observe correct operator protection in accordance with regulations against material kept in the HEPA-filter - if fitted.

Tools needed:

1 Torx T 20 Screw-driver
1 Flat plier
1 Slotted Screw-driver

Torque wrench settings:

Screws at motor top: 0.9 Nm

Refit parts in reversed order.

Test after repair

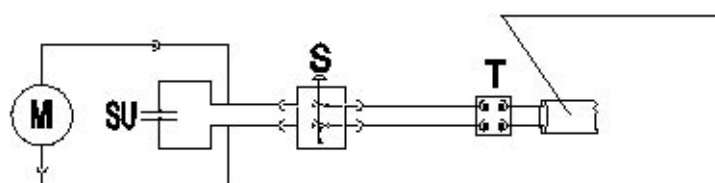
After repair, please check that the vacuum cleaner is functioning to Nilfisk specifications and to any local authorised precautions.

WHEN REPLACING FAN UNIT

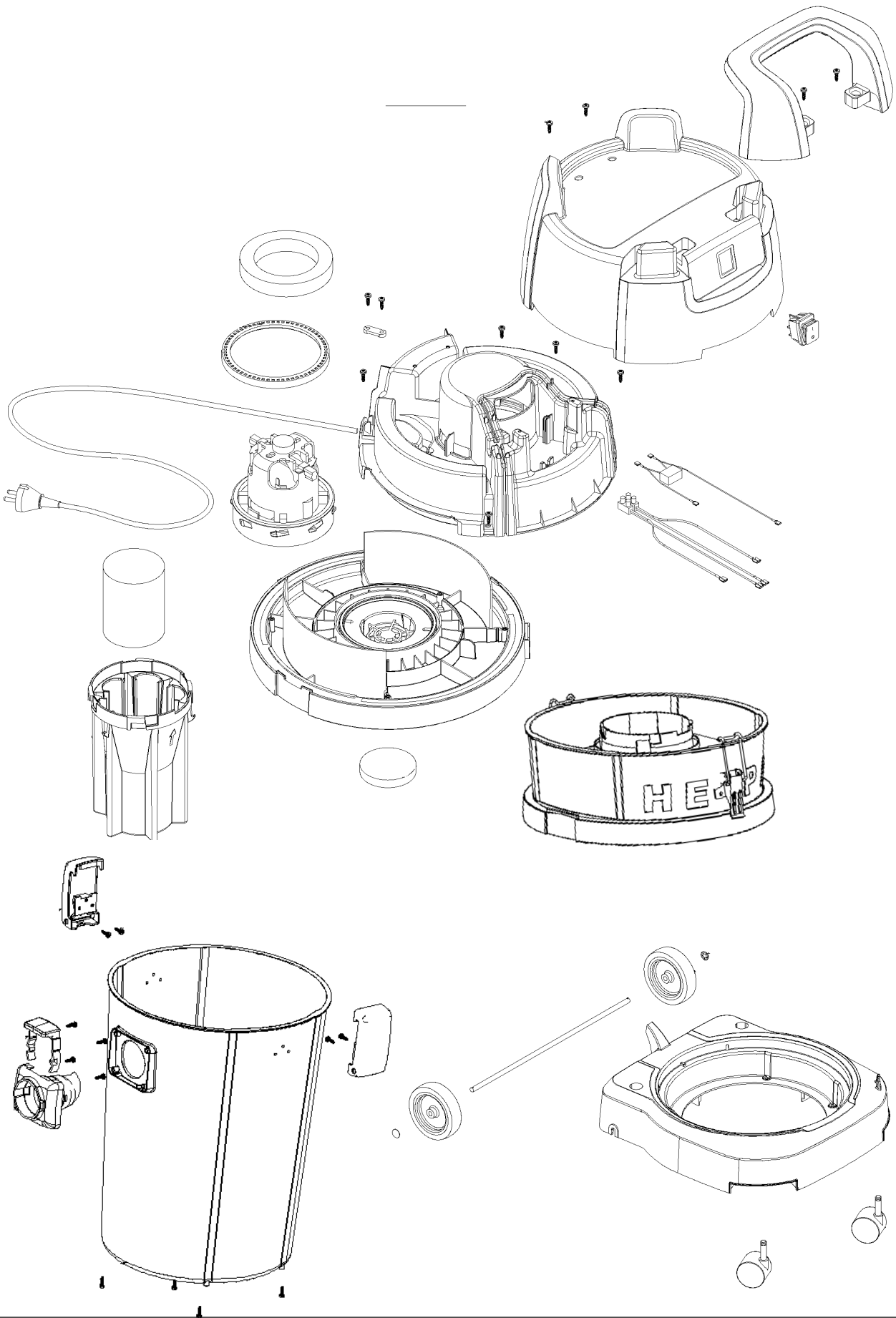
Always mount the fan unit so that the carbon brush holder is pointing in the MACHINE LONGITUDINAL DIRECTION, MASKINENS LÄNGDRIKTNING, LÄNGENTREU VON DER MASCHINE.

WIRING DIAGRAM GD 320 - DOUBLE INSULATED VERSIONS

1-motor



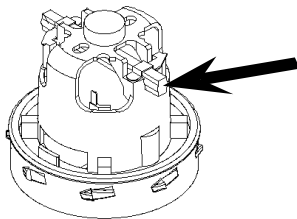
M Fan Unit
S Switch
SU Suppressor Unit
T Terminal Block



To be performed by a skilled or instructed person only!

Disconnect the vacuum cleaner from the power supply before starting the work!

NOTE! Observe correct operator protection in accordance with regulations against material kept in the HEPA-filter - if fitted.



WHEN REPLACING FAN UNIT
Always mount the fan unit so that the carbon brush holder is pointing in the **MACHINE LONGITUDINAL DIRECTION**,
MASKINENS LÄNGDRIKTNING,
LÄNGENTREU VON DER MASCHINE.

Tools needed:

- 1 Torx T 20 Screw-driver
- 1 Flat plier
- 1 Slotted Screw-driver

Screws: Combi Torx T 20

Torque wrench settings:

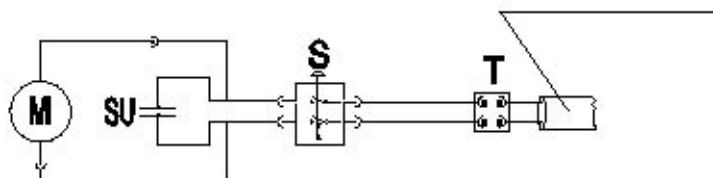
Screws at motor top: **0.9 Nm**

Refit parts in reversed order.

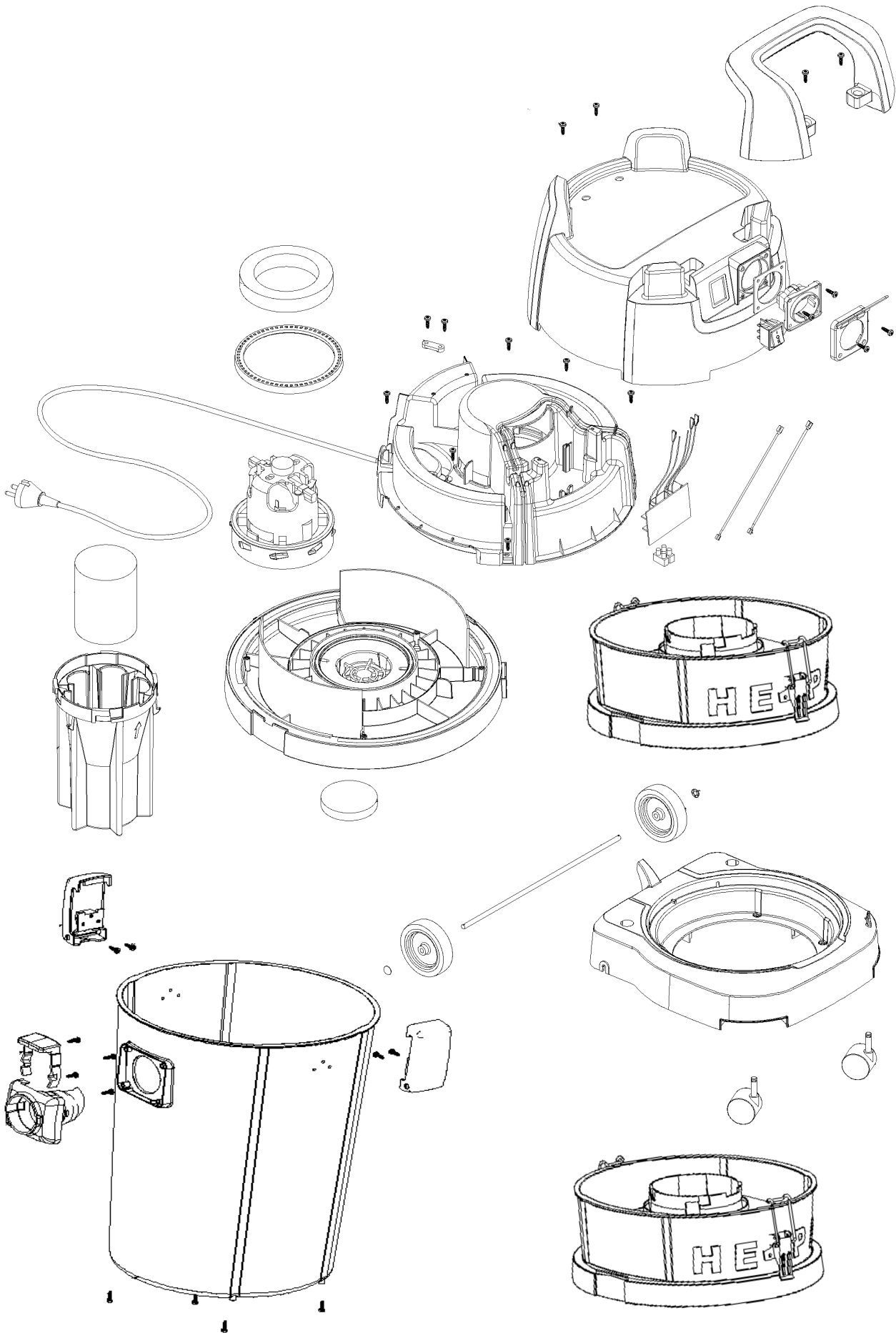
Test after repair

After repair, please check that the vacuum cleaner is functioning to Nilfisk specifications and to any local authorised precautions.

WIRING DIAGRAM GWD 320, GWD 335 DOUBLE INSULATED VERSIONS

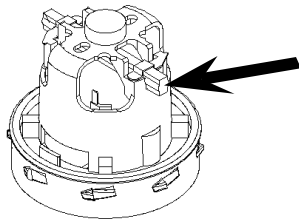


- M** Fan Unit
- S** Switch
- SU** Suppressor Unit
- T** Terminal Block



To be performed by a skilled or instructed person only!

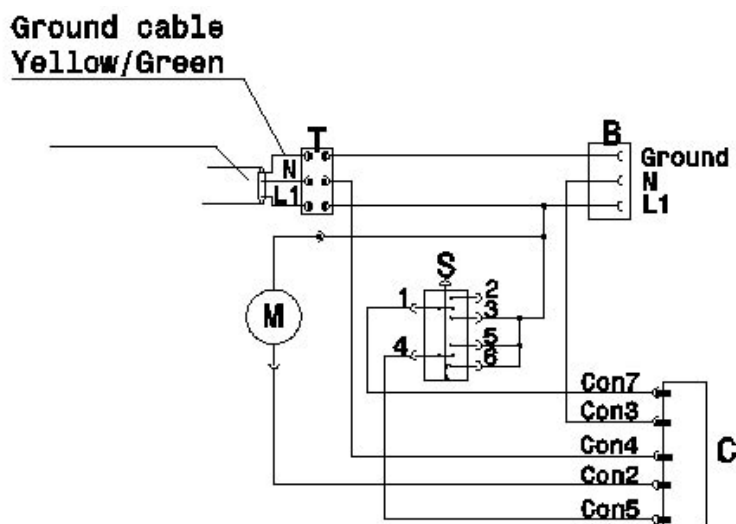
Disconnect the vacuum cleaner from the power supply before starting the work!



WHEN REPLACING FAN UNIT
Always mount the fan unit so that the carbon brush holder is pointing in the MACHINE LONGITUDINAL DIRECTION, MASKINENS LÄNGDRIKTNING, LÄNGENTREU VON DER MASCHINE.

NOTE! Observe correct operator protection in accordance with regulations against material kept in the HEPA-filter - if fitted.

WIRING DIAGRAM GWD 320 CRAFTSMAN



M Fan Unit
S Switch
B Power Outlet
T Terminal Block
C Circuit Board S2

Tools needed:

1 Torx T 20 Screw-driver
1 Flat plier
1 Slotted Screw-driver

Screws: Combi Torx T 20

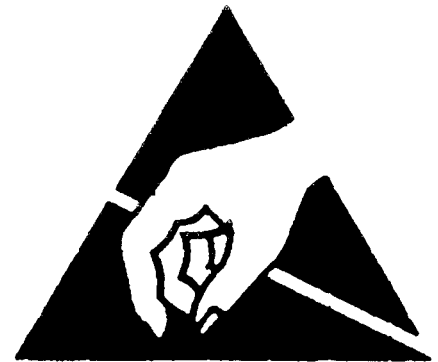
Torque wrench settings:

Screws at motor top: 0.9 Nm

Refit parts in reversed order.

Test after repair

After repair, please check that the vacuum cleaner is functioning to Nilfisk specifications and to any local authorised precautions.



Sensitive to ESD=Electrostatic Discharge

CAUTION!

Details sensitive to electrostatic discharge. Notice applicable ESD-safety directions (acc. to CECC00015).

VARNING!

Detaljer känsliga för elektrostatisk urladdning. Iakttag gällande ESD-skyddsföreskriften (enl. CECC00015).

ATTENTION!

Éléments sensibles aux décharges électrostatiques. Respecter les consignes de sécurité (selon CECC00015).

ACHTUNG!

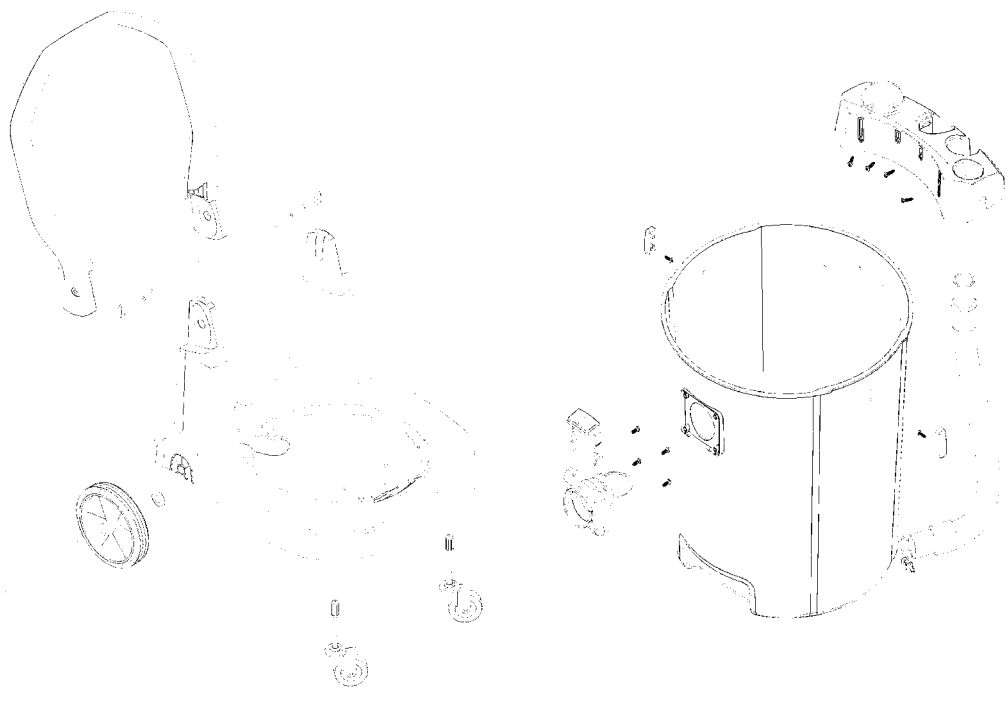
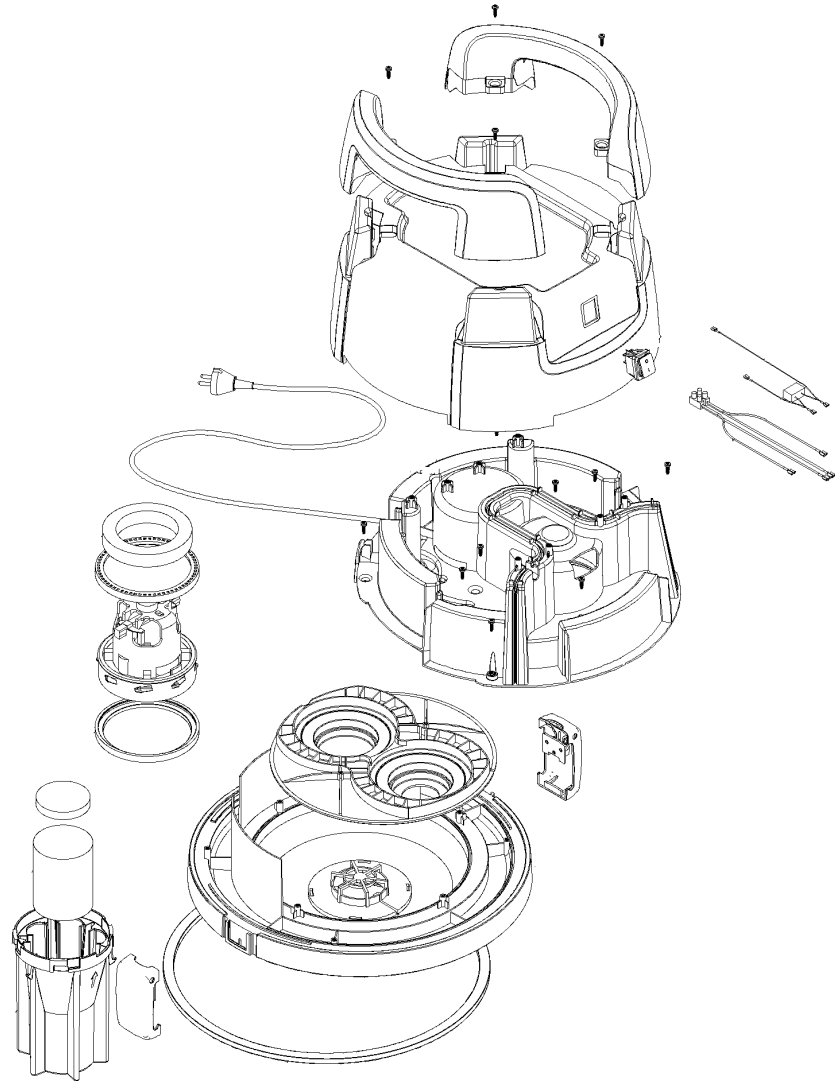
Teile reagieren empfindlich auf elektrostatisches Entladen. Beachten Sie die geltenden ESD-Schutzvorschriften (gemäß CECC00015).

AVISO!

Piezas sensibles a las descargas electrostáticas. Respete las reglas de protección ESD (conforme CECC00015).

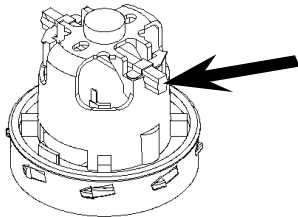
VAROITUS!

Sähköstaattiselle purkaukselle herkät osat. Noudata voimassa olevia ESD-turvamääräyksiä(CEC C00015).



To be performed by a skilled or instructed person only!

Disconnect the vacuum cleaner from the power supply before starting the work!



WHEN REPLACING FAN UNIT
Always mount the fan unit so that the carbon brush holder is pointing in the **MACHINE LONGITUDINAL DIRECTION**,
MASKINENS LÄNGDRIKTNING,
LÄNGENTREU VON DER MASCHINE.

Tools needed:

- 1 Torx T 20 Screw-driver
- 1 Flat plier
- 1 Slotted Screw-driver

Screws: Combi Torx T 20

Torque wrench settings:

Screws at motor top: 0.9 Nm

Refit parts in reversed order.

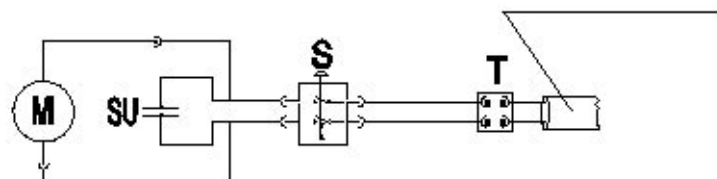
Test after repair

After repair, please check that the vacuum cleaner is functioning to Nilfisk specifications and to any local authorised precautions.

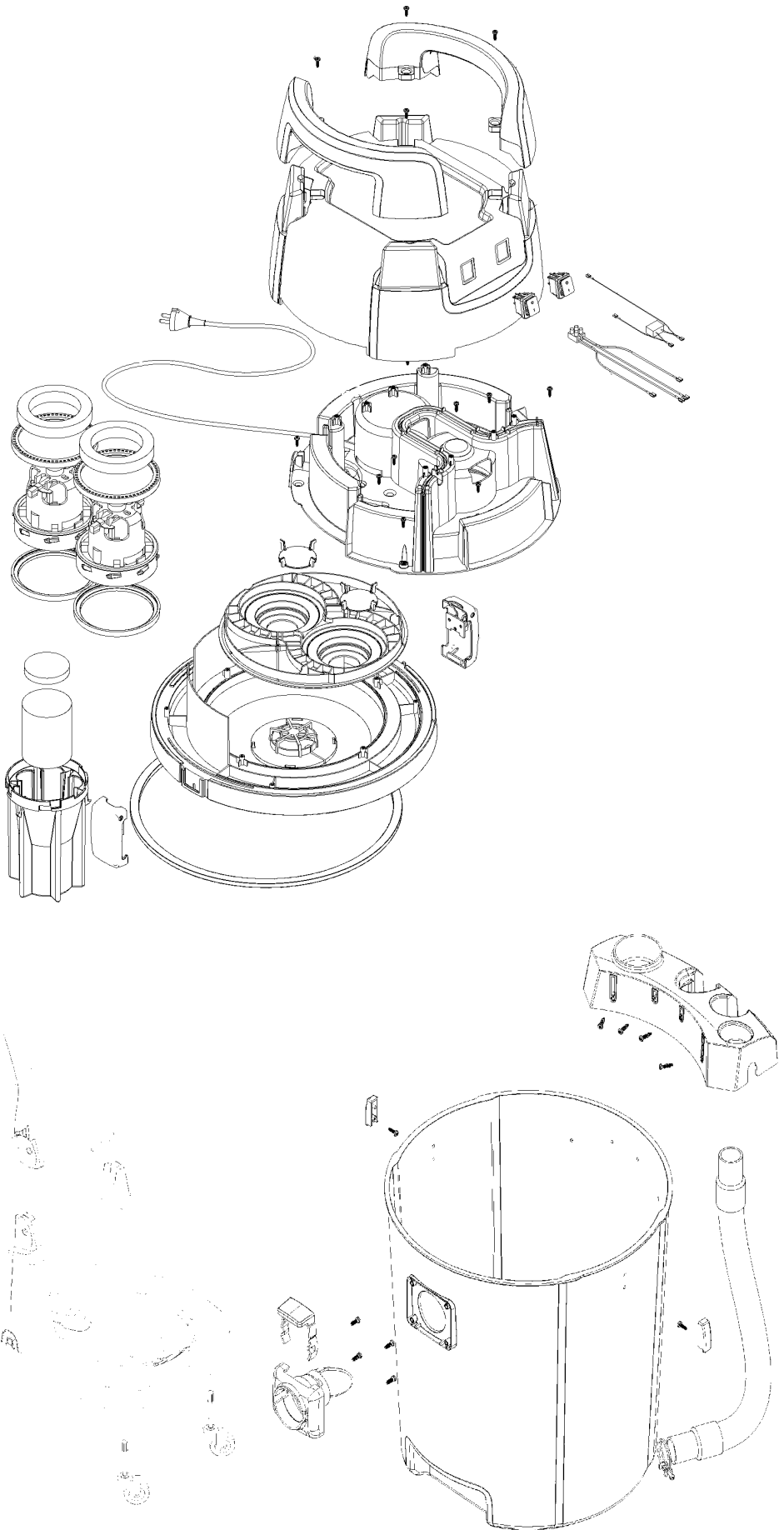
NOTE! Observe correct operator protection in accordance with regulations against material kept in the HEPA-filter - if fitted.

**WIRING DIAGRAM GWD 350 AND GWD 375 ONE MOTOR VERSION
DOUBLE INSULATED**

1-motor



M Fan Unit
S Switch
SU Suppressor Unit
T Terminal Block



To be performed by a skilled or instructed person only!

Disconnect the vacuum cleaner from the power supply before starting the work!

Tools needed:

1 Torx T 20 Screw-driver
1 Flat plier
1 Slotted Screw-driver

Screws: Combi Torx T 20

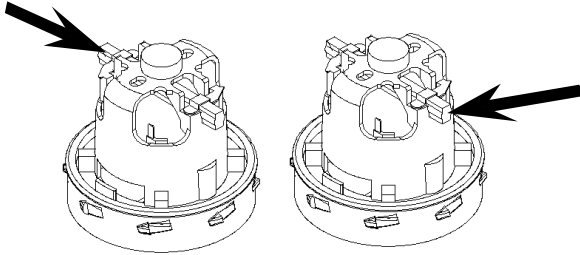
Torque wrench settings:

Screws at motor top: 0.9 Nm

Refit parts in reversed order.

Test after repair

After repair, please check that the vacuum cleaner is functioning to Nilfisk specifications and to any local authorised precautions.

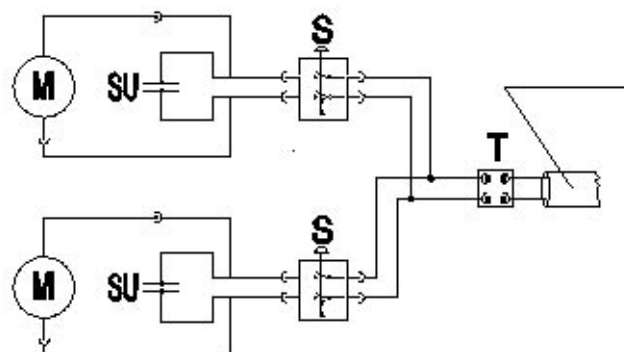


WHEN REPLACING FAN UNITS.

Always replace both fan units when replacing at a two motor version. Mount the fan units so that the carbon brush holders is pointing in the MACHINE LONGITUDINAL DIRECTION, MASKINENS LÄNGDRIKTNING, LÄNGENTREU VON DER MASCHINE.

NOTE! Observe correct operator protection in accordance with regulations against material kept in the HEPA-filter - if fitted.

WIRING DIAGRAM GWD 350 AND GWD 375 DOUBLE INSULATED TWO MOTOR VERSIONS



M Fan Unit
S Switch
SU Suppressor Unit
T Terminal Block