



## Electronic Service Manuals

This electronic document is provided as a service to our customers. We do not create the contents of the information contained in this document. Should you have detailed questions pertaining to the information contained in this document, you may contact Michco, or the manufacturer which provided the original information in this electronic deliverable. Michco's only part in this electronic deliverable was the electronic assembly process. By providing this manual on line we are not guaranteeing parts availability.

You may contact Michco through the following methods:

Phone (517) 484-9312 or (800) 331-3339

2011 N. High St. -- Lansing, Michigan -- 48906

Fax: (517) 484-9836

Email: [CustServe@Michco.com](mailto:CustServe@Michco.com)

Web site: [www.Michco.Com](http://www.Michco.Com)

Parts Web site: [www.FloorMachineParts.Com](http://www.FloorMachineParts.Com)

Order Parts on Line at:

**[www.FloorMachineParts.Com](http://www.FloorMachineParts.Com)**

Directly to Parts & Service:

By Email: **[Shop@Michco.com](mailto:Shop@Michco.com)**

By Fax: (517) 702-2041

By Voice: Use numbers above.

**Serving the Cleaning Industry Since 1922**

Notice: All copyrighted material remains property of original owners, all trademarks are property of respective owners. Manuals are subject to Manufacturer's reproduction limitations. Originals or reproductions were provided by manufacturers through a request. We make no warranty as to the correctness of information provided in this document and you assume all risk. By placing these manuals on line we are not declaring our corporation to be an manufacturer authorized dealer or provider, please check our web site for authorized manufacturers we represent.

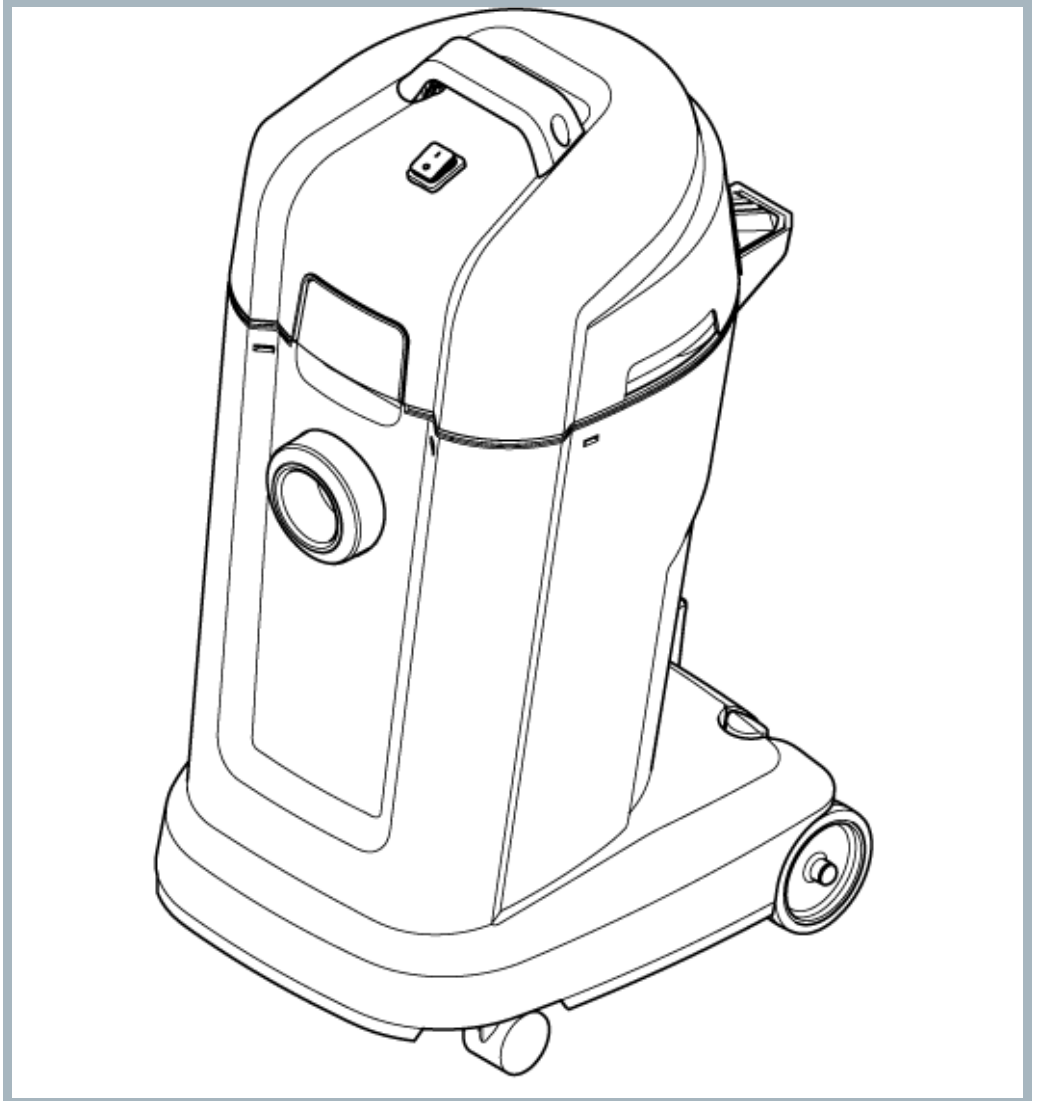
# VL500-35

---

Model:

VL500 - 35B - Nilfisk

VL500 - 35E - Nilfisk



Part List US-English

09-07-2014

# Table of Contents

VL500-35

<b>Top 35</b>	<b>3</b>
<b>Container 35 BSF, BDF, EDF</b>	<b>5</b>
<b>Filters and bags 35</b>	<b>7</b>
<b>Accessories 35</b>	<b>9</b>
<b>Recommended spare parts 35</b>	<b>11</b>

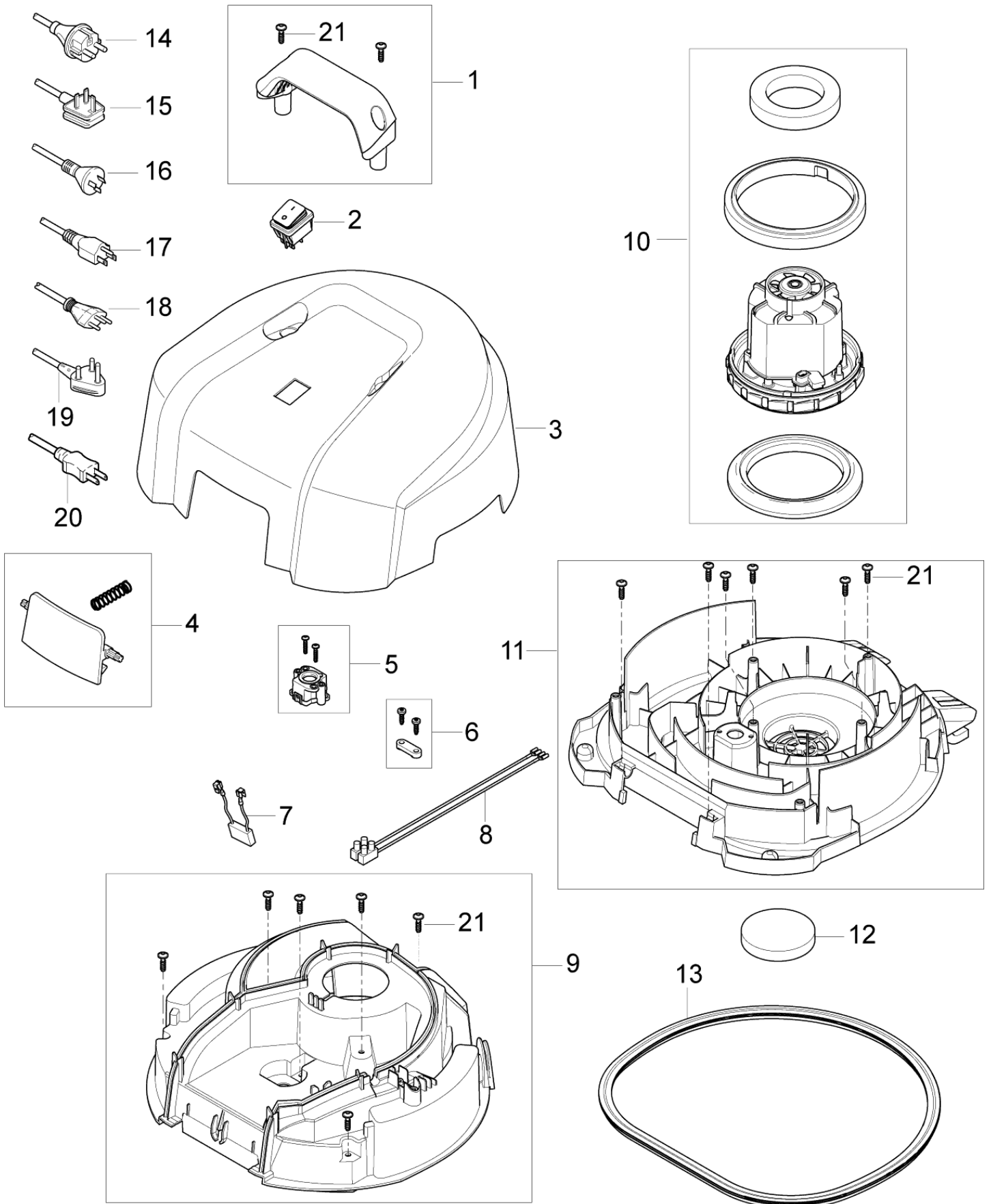
# Top 35

VL500-35

09-07-2014

Part List ID  
VL50002

3



# Top 35

## VL500-35

09-07-2014

Part List ID  
VL50002

4

Pos	Part no.	Qty	Description
0	107410810	1	PACKAGING VL500/MAXXI 35 - KIT
01	107407233	1	HANDLE F. 35L BIN VL500
02	107404540	1	SWITCH 0-1 DOUBLE POLE SET
03	107407305	1	HOOD 35L VL500
04	107407235	1	CLAMP F. 75-55-35 L BIN VL500
05	107407237	1	VACUUM VALVE CPL.
06	140 6560 500	1	ANTI STRAIN CLIP
07	48338	1	ANTI-INTERFERENCE CAPACITOR
08	140 7042 500	1	WIRE INTERNAL FOR GWD 300
09	107407238	1	CLAMPINGPLATE 35L
10	302003384	1	MOTOR KIT 1200W 230V
10	302003388	1	MOTOR KIT 1000W 120V
11	107407239	1	BASEPLATE 35L 1 MOTOR VL500
12	140 8682 500	1	MOTOR FILTER
13	107407241	1	GASKET F. BASEPLATE 35L
14	12222501	1	CORD SET EU L 10M
15	12222503	1	CORD SET UK L 10M
16	12222506	1	CORD SET AU/NZ L 10M
17	107401614	1	CORD SET US/TW 3C 15.5M YELLOW
18	12222507	1	CORD SET CH L 10M
19	107407242	1	POWER CORD H05VV-F 2X1.00 SABS 164-1 16A ZA
20	140 6702 500	1	CORD SET JP 15.5M
21	302003704	8	SCREW EJOT DELTA PT50X18WN5451

# Container 35 BSF, BDF, EDF

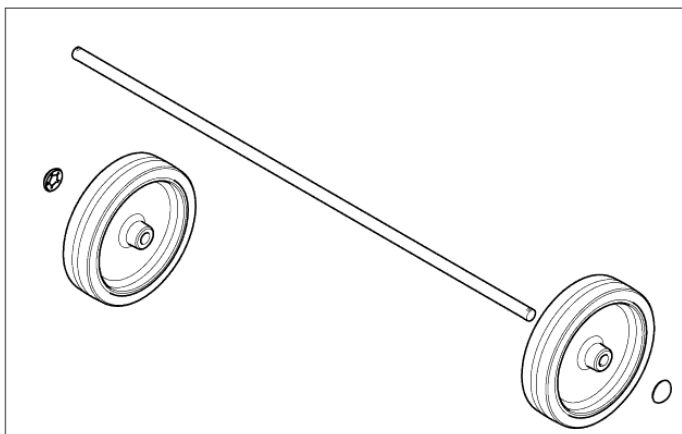
VL500-35

09-07-2014

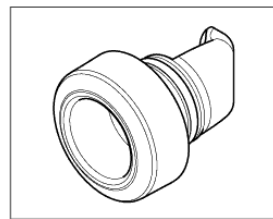
Part List ID

VL50008

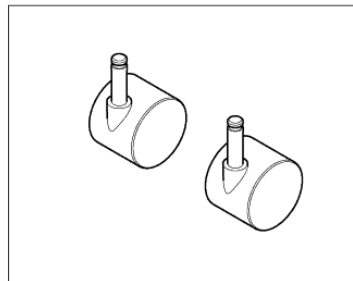
5



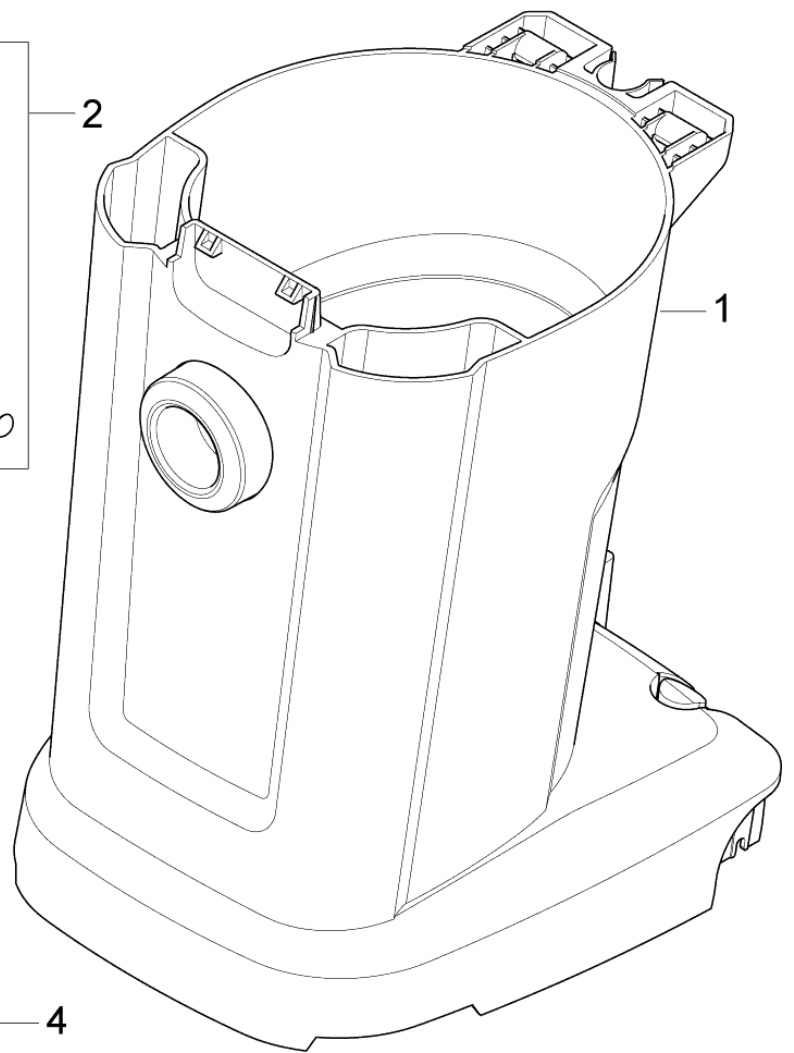
2



3



4



# Container 35 BSF, BDF, EDF

VL500-35

09-07-2014

Part List ID  
VL50008

6

Pos	Part no.	Qty	Description
1	107407256	1	CONTAINER WITH TROLLEY 35L VL500
2	140 8446 600	1	WHEEL REAR 2 PCS
3	107407258	1	INLET ROUND VL500
4	140 6422 500	1	WHEELS LINK 50MM

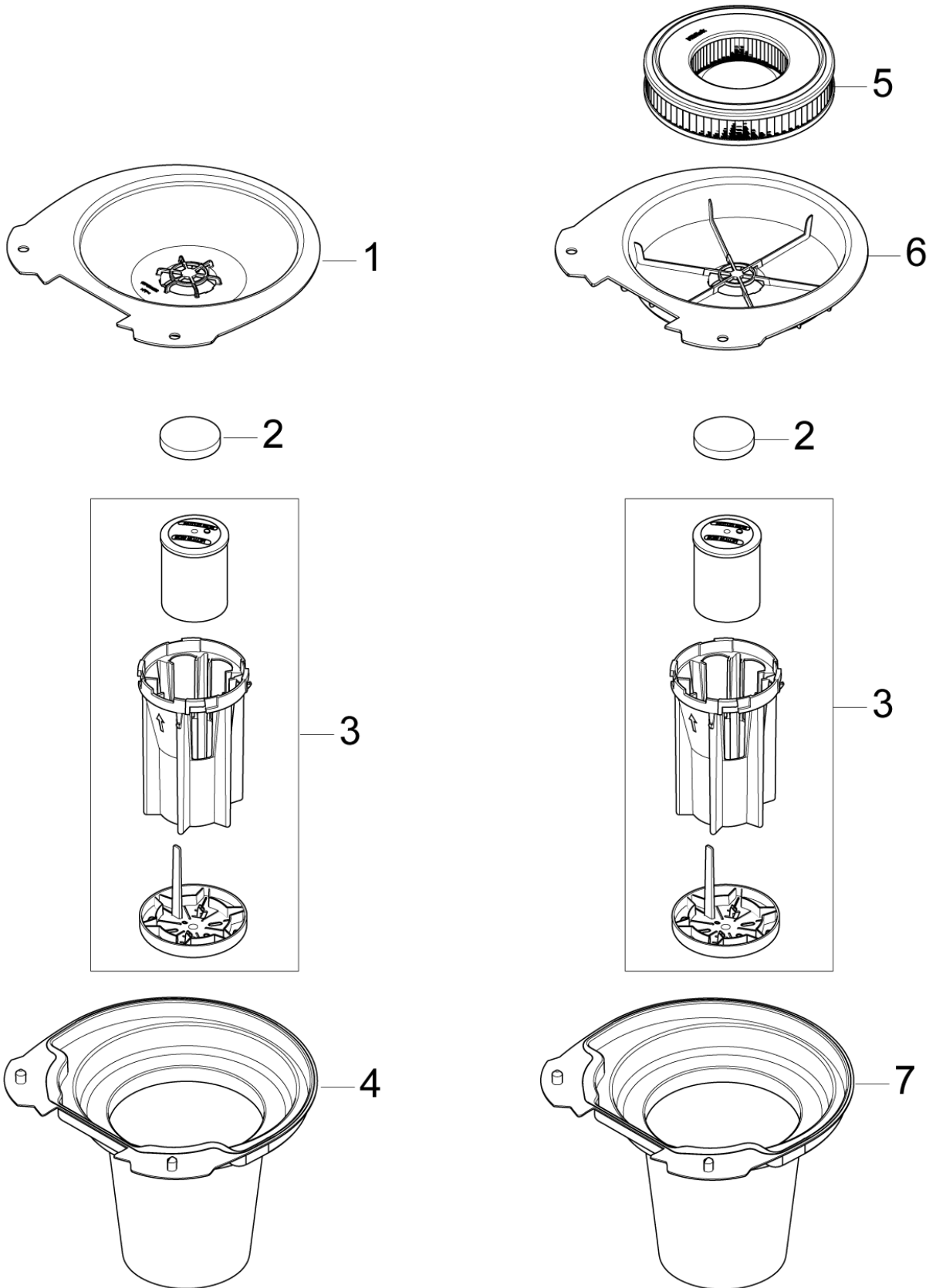
# Filters and bags 35

VL500-35

09-07-2014

Part List ID  
VL50020

7



# Filters and bags 35

VL500-35

09-07-2014

Part List ID  
VL50020

8

Pos	Part no.	Qty	Description	
1	107407295	1	FLOATER ADAPTER 35L	BSF
2	140 8682 500	1	MOTOR FILTER	
3	140 8680 500	1	FLOAT BASKET	
4	107407296	1	SACK FILTER	BSF
5	107407297	1	CARTRIGE FILTER 35L	BDF, EDF
6	107407298	1	DRYFILTER BOX 35L	BDF, EDF
7	107407299	1	WET FILTER 35L	BDF, EDF

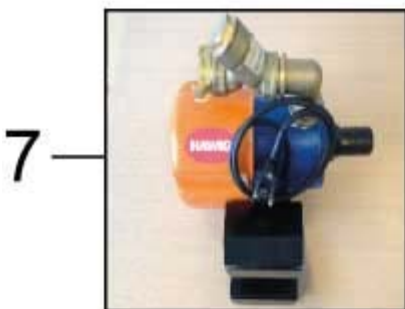
# Accessories 35

VL500-35

09-07-2014

Part List ID  
VL5003512

9



# Accessories 35

VL500-35

09-07-2014

Part List ID  
VL5003512

10

Pos	Part no.	Qty	Description
1	302004004	1	FLEECE FILTER BAG 5 PCS ATTIX 40/50
2	107407308	1	HOSE D32 1.9M CPL
3	107407310	1	FLOOR NOZZLE D32 RUBBER STRIP
3	107407311	1	FLOOR NOZZLE D32 BRUSH
4	107407309	2	EXTENSION TUBE D32 - SS
5	107407334	1	CREVICE NOZZLE D32
6	107407312	1	BRUSH NOZZLE D32
7	107408801	1	PUMP KIT - VL500 220/240V

# Recommended spare parts 35

VL500-35

09-07-2014

Part List ID  
VL5003526

11

No Drawing For Part List

# Recommended spare parts 35

VL500-35

09-07-2014

Part List ID  
VL5003526

12

Pos	Part no.	Qty	Description
	107404540	1	SWITCH 0-1 DOUBLE POLE SET
	107407235	1	CLAMP F. 75-55-35 L BIN VL500
	107407237	1	VACUUM VALVE CPL.
	107407258	1	INLET ROUND VL500
	107407293	1	EASY TILT 75L BIN LEFT-RIGHT
	107407295	1	FLOATER ADAPTER 35L
	107407296	1	SACK FILTER
	107407297	1	CARTRIGE FILTER 35L
	107407298	1	DRYFILTER BOX 35L
	107407299	1	WET FILTER 35L
	12222501	1	CORD SET EU L 10M
	140 6422 500	1	WHEELS LINK 50MM
	140 8446 600	1	WHEEL REAR 2 PCS
	140 8680 500	1	FLOAT BASKET
	140 8682 500	1	MOTOR FILTER
	302003384	1	MOTOR KIT 1200W 230V
	302003388	1	MOTOR KIT 1000W 120V
	302003704	1	SCREW EJOT DELTA PT50X18WN5451
	48338	1	ANTI-INTERFERENCE CAPACITOR