



## Electronic Service Manuals

This electronic document is provided as a service to our customers. We do not create the contents of the information contained in this document. Should you have detailed questions pertaining to the information contained in this document, you may contact Michco, or the manufacturer which provided the original information in this electronic deliverable. Michco's only part in this electronic deliverable was the electronic assembly process. By providing this manual on line we are not guaranteeing parts availability.

You may contact Michco through the following methods:

Phone (517) 484-9312 or (800) 331-3339

2011 N. High St. -- Lansing, Michigan -- 48906

Fax: (517) 484-9836

Email: [CustServe@Michco.com](mailto:CustServe@Michco.com)

Web site: [www.Michco.Com](http://www.Michco.Com)

Parts Web site: [www.FloorMachineParts.Com](http://www.FloorMachineParts.Com)

Order Parts on Line at:

**[www.FloorMachineParts.Com](http://www.FloorMachineParts.Com)**

Directly to Parts & Service:

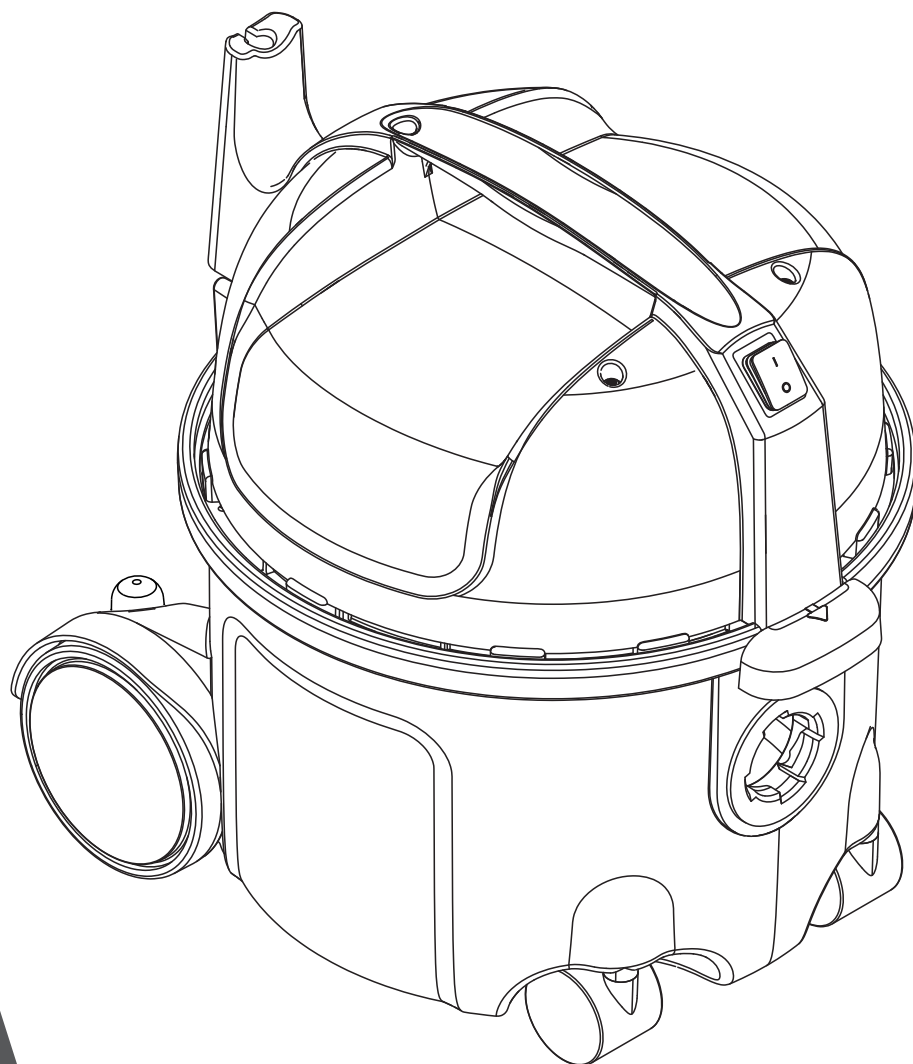
By Email: **[Shop@Michco.com](mailto:Shop@Michco.com)**

By Fax: (517) 702-2041

By Voice: Use numbers above.

**Serving the Cleaning Industry Since 1922**

Notice: All copyrighted material remains property of original owners, all trademarks are property of respective owners. Manuals are subject to Manufacturer's reproduction limitations. Originals or reproductions were provided by manufacturers through a request. We make no warranty as to the correctness of information provided in this document and you assume all risk. By placing these manuals on line we are not declaring our corporation to be an manufacturer authorized dealer or provider, please check our web site for authorized manufacturers we represent.



SPARE PARTS LIST

# VP300 SERIES

---

# SPARE PARTS LIST

---



# Table of Contents

VP300 / VC300 / GD 111

|                                      |          |
|--------------------------------------|----------|
| <b>Summary (GD 111/VC300 /VP300)</b> | <b>3</b> |
| <b>Accessories</b>                   | <b>5</b> |
| <b>RECOMMENDED SPARE PARTS</b>       | <b>7</b> |

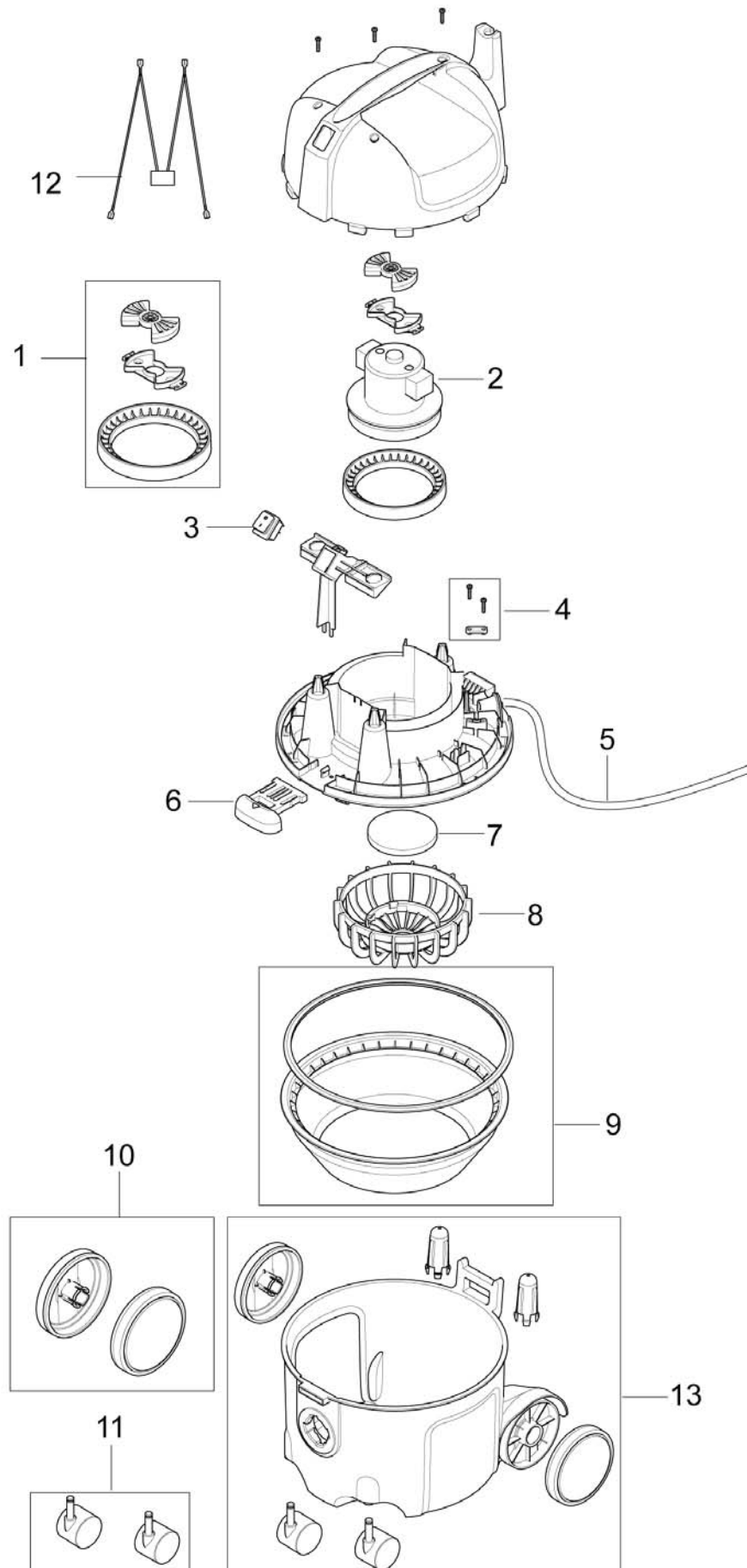
# Summary (GD 111/ VC300 / VP300)

19-01-2012

Part List ID  
GD11102

VP300 / VC300 / GD 111

3



# Summary (GD 111/ VC300 / VP300)

VP300/VC300/GD 111

19-01-2012

Part List ID

GD11102

4

| Pos | Part no.     | Qty | Description                |           | EAN        |
|-----|--------------|-----|----------------------------|-----------|------------|
| 0   | 147 1436 000 | 1   | BOX GD111                  |           | 5703887110 |
| 1   | 147 0660 500 | 1   | MOTOR SUSPENSION KIT       |           | 7319519652 |
| 2   | 107402675    | 1   | FAN UNIT 1200W TCO KIT     | EU        | 5703887110 |
| 2   | 147 1428 500 | 1   | FAN UNIT 230-240V 900W TCO | EU        | 7319519673 |
| 2   | 147 1429 500 | 1   | FAN UNIT 110-120V 900W TCO | US        | 7319519673 |
| 2   | 147 1430 500 | 1   | FAN UNIT 100V 900W TCO     | JP        | 7319519673 |
| 3   | 140 9537 500 | 1   | SWITCH TWO POLE 2 PCS      |           | 7319519639 |
| 4   | 140 6560 500 | 1   | ANTI STRAIN CLIP           |           | 7319519640 |
| 5   | 107403731    | 1   | CORDSET 15.5 MJP           | JP        | 5703887113 |
| 5   | 140 3608 600 | 1   | CORD SET 10.5M US/TW       | US        | 7319519673 |
| 5   | 140 6643 580 | 1   | CORD SET 10.5M UK          | UK        | 7319519673 |
| 5   | 140 6676 570 | 1   | COR SET A U NZ.BLACK 10M   | AU        | 7319519673 |
| 5   | 140 6800 650 | 1   | CORD SET 10M EU            | EU        | 7319519673 |
| 5   | 147 0504 540 | 1   | CORD SET 10.5M CHINA       | CN        | 7319519673 |
| 6   | 147 1409 500 | 1   | LATCH                      |           | 7319519673 |
| 7   | 147 0670 500 | 1   | FILTER MOTOR KIT           |           | 7319519651 |
| 8   | 147 0669 500 | 1   | BASKET SACK FILTER         |           | 7319519651 |
| 9   | 147 1432 500 | 1   | SACK FILTER CPL            | Accessory | 7319519673 |
| 10  | 140 8458 500 | 1   | WHEEL REAR KIT             |           | 7319519632 |
| 11  | 140 6422 500 | 1   | WHEELS LINK 50MM           |           | 7319519631 |
| 13  | 107406056    | 1   | CONTAINER VP300            |           | 7319519640 |

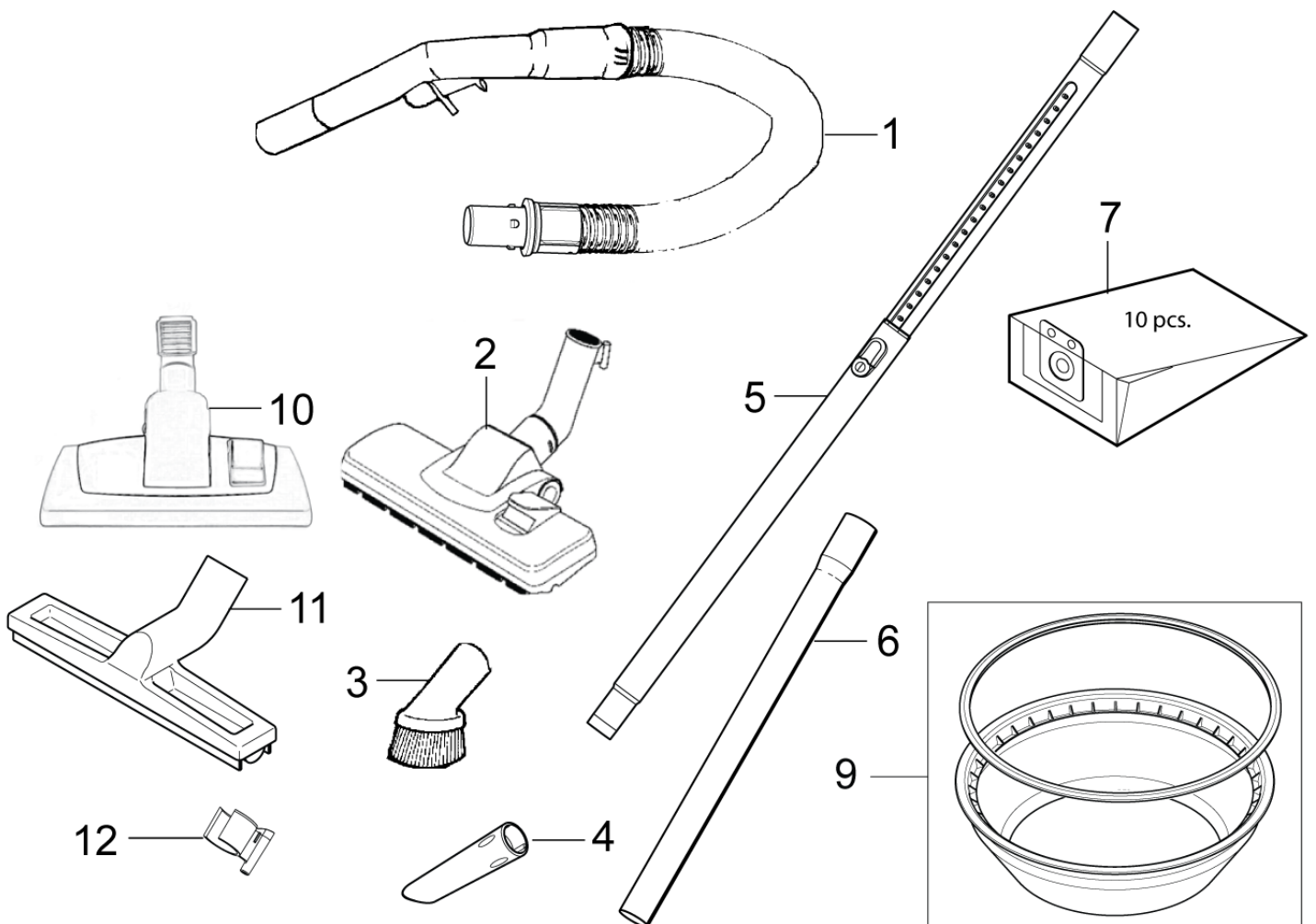
# Accessories

VP300/VC300/GD 111

19-01-2012

Part List ID  
GD11106

5



# Accessories

VP300 / VC300 / GD 111

19-01-2012

Part List ID

GD11106

6

| Pos | Part no.     | Qty | Description                    | EAN        |
|-----|--------------|-----|--------------------------------|------------|
| 1   | 147 0765 500 | 1   | HOSECPL BLACK                  | 7319519651 |
| 2   | 107403122    | 1   | COMBI NOZZLE D252 KIT          | 5703887113 |
| 2   | 107405141    | 1   | SPAREPART COMBI NOZZLE VC300JP | 5703887113 |
| 3   | 140 8244 500 | 1   | BRUSH NOZZLE KIT               | 7319519658 |
| 4   | 147 0146 500 | 1   | CREVICE NOZZLE D32 L153 BLACK  | 7319519647 |
| 5   | 011 8130 500 | 1   | TELESCOPIC TUBE ALUMINIUM      | 7319519631 |
| 5   | 107403804    | 1   | TELESCOPIC TUBE ACC.           | 7319519631 |
| 6   | 011 6431 500 | 2   | EXTENSION TUBE ALUMINIUM       | 7319519631 |
| 6   | 140 8246 040 | 2   | EXTENSION TUBE STEEL D32       | 7319519607 |
| 7   | 140 8618 000 | 1   | DUST BAG 10L 10 PCS            | 7319519628 |
| 9   | 147 1432 500 | 1   | SACK FILTER CPL                | 7319519673 |
| 10  | 140 8492 510 | 1   | COMBI NOZZLE KIT               | 7319519636 |
| 11  | 140 6700 540 | 1   | NOZZLE MULTI SURFACE 32 MM     | 7319519636 |
| 12  | 147 0585 500 | 1   | PARKING CLIP SVART             | 7319519648 |

# RECOMMENDED SPARE PARTS

VP300 / VC300 / GD 111

19-01-2012

Part List ID

GD11108

7

| Pos | Part no.     | Qty | Description                | EAN           |
|-----|--------------|-----|----------------------------|---------------|
| 0   | 107402675    | 1   | FAN UNIT 1200W TCO KIT     | 5703887110    |
| 0   | 140 6422 500 | 1   | WHEELS LINK 50MM           | 7319519631    |
| 0   | 140 6560 500 | 1   | ANTI STRAIN CLIP           | 7319519640    |
| 0   | 140 6643 580 | 1   | CORD SET 10.5M UK          | 7319519673    |
| 0   | 140 3608 600 | 1   | CORDSET 10.5M US/TW        | 7319519673    |
| 0   | 140 8458 500 | 1   | WHEEL REAR KIT             | 7319519632    |
| 0   | 140 9537 500 | 1   | SWITCH TWO POLE 2 PCS      | 7319519639    |
| 0   | 147 0660 500 | 1   | MOTOR SUSPENSION KIT       | 7319519652    |
| 0   | 147 0669 500 | 1   | BASKET SACK FILTER         | 7319519651    |
| 0   | 147 0670 500 | 1   | FILTER MOTOR KIT           | 7319519651    |
| 0   | 147 1409 500 | 1   | LATCH                      | 7319519673    |
| 0   | 147 1429 500 | 1   | FAN UNIT 110-120V 900W TCO | US 7319519673 |
| 0   | 147 1432 500 | 1   | SACK FILTER CPL            | 7319519673    |



**USA**

Nilfisk-Advance Inc.  
14600 21st Avenue North  
Plymouth, MN 55447-3408  
Tel.: (763) 745 3500  
Fax : (763) 745 3718

**Canada**

Nilfisk-Advance Canada  
240 Superior Boulevard Mississauga, ON L5T 2L2  
Tel.: 905-564-1149  
Fax: 905-564-1030