



Electronic Service Manuals

This electronic document is provided as a service to our customers. We do not create the contents of the information contained in this document. Should you have detailed questions pertaining to the information contained in this document, you may contact Michco, or the manufacturer which provided the original information in this electronic deliverable. Michco's only part in this electronic deliverable was the electronic assembly process. By providing this manual on line we are not guaranteeing parts availability.

You may contact Michco through the following methods:

Phone (517) 484-9312 or (800) 331-3339

2011 N. High St. -- Lansing, Michigan -- 48906

Fax: (517) 484-9836

Email: CustServe@Michco.com

Web site: www.Michco.Com

Parts Web site: www.FloorMachineParts.Com

Order Parts on Line at:

www.FloorMachineParts.Com

Directly to Parts & Service:

By Email: **Shop@Michco.com**

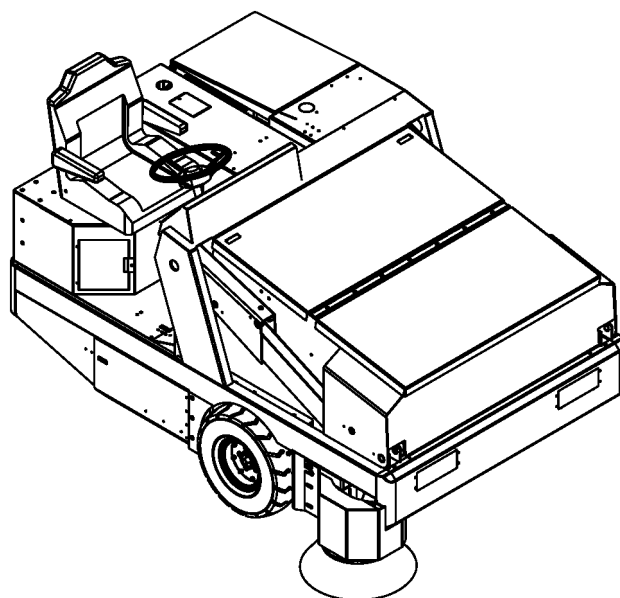
By Fax: (517) 702-2041

By Voice: Use numbers above.

Serving the Cleaning Industry Since 1922

Notice: All copyrighted material remains property of original owners, all trademarks are property of respective owners. Manuals are subject to Manufacturer's reproduction limitations. Originals or reproductions were provided by manufacturers through a request. We make no warranty as to the correctness of information provided in this document and you assume all risk. By placing these manuals on line we are not declaring our corporation to be an manufacturer authorized dealer or provider, please check our web site for authorized manufacturers we represent.

Granterra



OPTIONS PARTS LIST

Active Models: 56516905(LPG), 56516906(Diesel)

Obsolete Models: 56516904(Gas)

Item	Ref. No.	Qty	Description
			Factory Installed Option
*	0880-369	1	Safety Air Cleaner Option
*	0880-392	1	Back-Up Alarm Option
*	0780-683	1	Foam Filled Tire Option
*	0780-684	1	Soft Shoe HP Tire Option
*	0880-639	1	Fire Extinguisher Option
*	0880-351	1	Light Package Option (Head, Tail & Instrument)
*	0880-355	1	Light Package Option (Head, Tail, Brake, Instrument, Turn Signal & 4-Way Flasher)
*	0880-361	1	Curb Light Option NOTE 1
*	56516756	1	Overhead Guard Option
* 0880-359-1	1	Flashing Light Option	
* 0880-408-1	1	Rotating Light Option (w/Overhead Guard)	
* 0880-360-1	1	Flashing Light Option (w/Overhead Guard)	
* 0880-391	1	Rear Work Light Option	
* 0880-720	1	Retractable Seat Belt Option	
* 56516764	1	Timed Filter Shaker Motors Option	
* 56516861	1	Left Side Broom Option	
* 0880-353	1	Wet Sweep Bypass Option	
* 0880-523	1	Clogged Filter Indicator Option	
* 56516847	1	External Protection Package Option	
* 0780-694	1	Hopper High Temp Shutdown Option	
* 56516867	1	SE Air Cleaner with Overhead Guard Option (Gasoline/LPG)	
* 56100840	1	SE Air Cleaner with Overhead Guard Option (Diesel)	
* 56516873	1	SE Air Cleaner with Amber Strobe Option (Gasoline/LPG)	
* 56100841	1	SE Air Cleaner with Amber Strobe Option (Diesel)	
* 56516881	1	Cab Option W/Pressurizer	
* 0780-692	1	Cab AC Option - Diesel	
* 0880-762	1	Cab AC Option - GM 3.0L	
* 56516902	1	Cab Heater Option – Gasoline / Petrol	
* 56516901	1	Cab Heater Option – LPG	
* 56516900	1	Cab Heater Option – Diesel	
* 0880-615	1	Cab Fan Option	
* 0880-388	1	Cab Wiper Option	
* 0880-616	1	Cab Dome Light Option	
* 56381780	1	Vac Wand Option	

* = Optional, Not Included

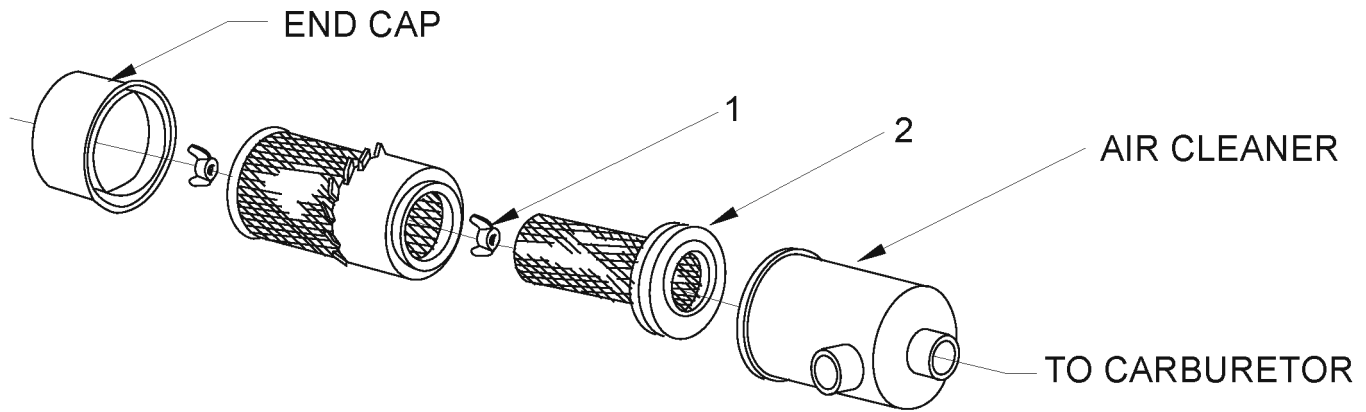
NOTE 1: HEADLIGHTS REQUIRED TO ACCOMPANY THIS OPTION

DESCRIPTION	PAGE
Safety Air Cleaner Option.....	4
Broom Options	5
Back-up Alarm Option	6
Tire Options.....	7
Fire Extinguisher Option.....	8-9
Light Package Option – 0880-351	10-11
Light Package Option – 0880-355	12-13
Curb Light Option.....	14-15
Overhead Guard Option.....	16-17
Warning Light Options [Without OHG]	18-19
Warning Light Options (W/ Overhead Guard).....	20-21
Rear Work Light Option.....	22
Front Wheel Guards Option	23
Retractable Seat Belt Option.....	24
Timed Shaker Filter Motors Option	25
Left Side Broom Option.....	26-27
Wet Sweep Bypass Option	28-29
Clogged Filter Indicator Option	30-31
External Protection Package Option	32-33
Stainless Steel Hopper Option.....	34
Hopper High Temperature Shutdown Option	35
SE Air Cleaner Option (with Overhead Guard)	36-37
SE Air Cleaner Option (with Amber Strobe Option).....	38-39
Cab Assembly	40-41
Cab Assembly w/Pressurizer	42-43
Cab AC Option - Diesel	44-45
Cab AC Option - GM 3.0L	46-47
Cab Heater Option	48-49
Cab Fan Option.....	50
Cab Wiper Option.....	51
Cab Dome Light option	52
Vac Wand Option	53

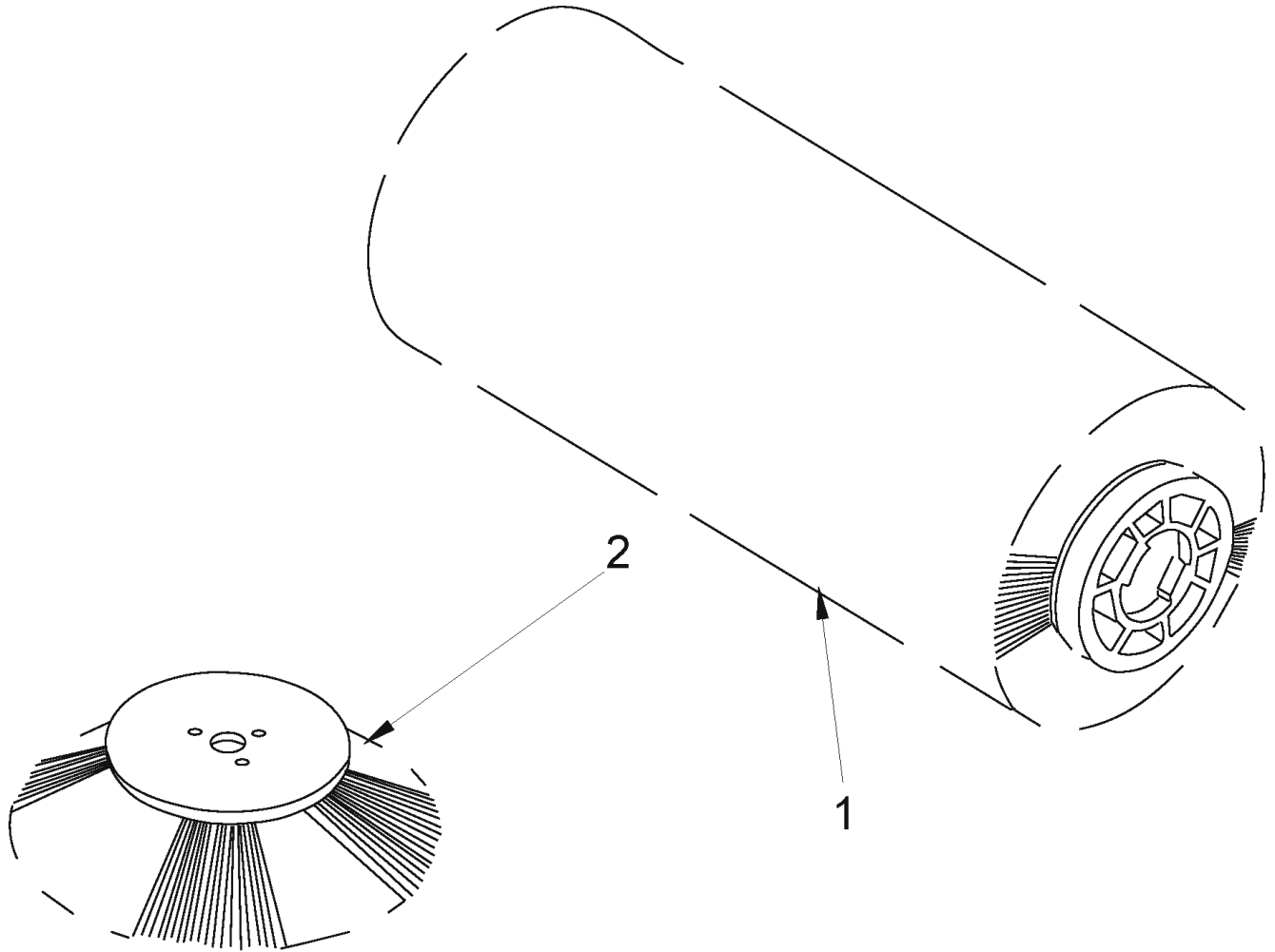
WHEN ORDERING PARTS

- * Use the part numbers from the "Ref. No." columns in this parts list.
- * Specify the model and serial number of the machine.
- * Use the space below to record the model and serial number for future reference.

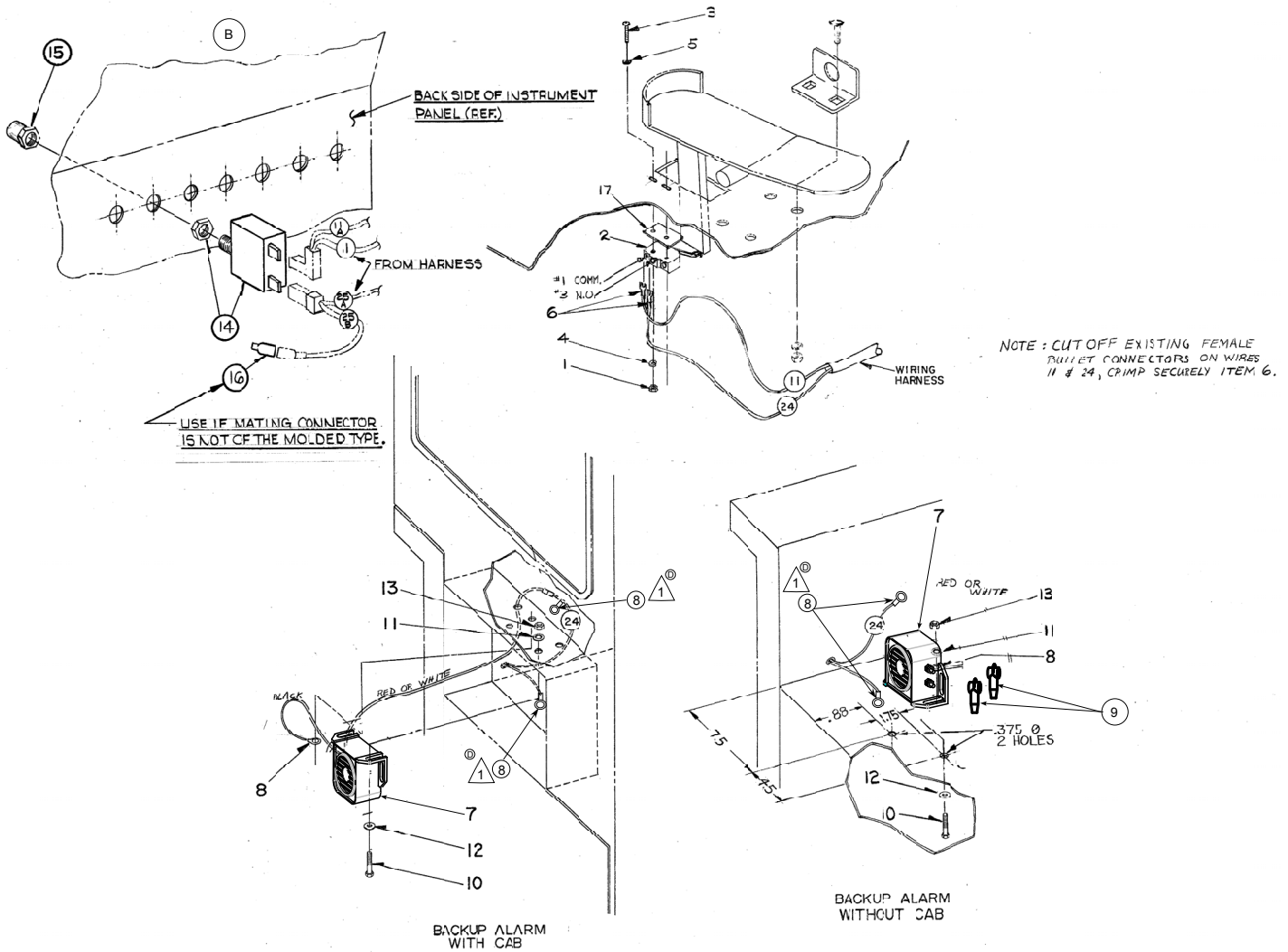
Model _____ Serial No. _____



Item	Ref. No.	Qty	Description
	0880-369	1	Safety Air Cleaner Option
1	8-23-03064	1	Wing Nut Assembly
2	8-24-04111	1	Filter Element
3	8-24-04106	1	Filter Element



Item	Ref. No.	Qty	Description
1	8-08-03202	1	Proex and Wire
	8-08-03204	1	Proex
	8-08-03207	1	Nylon
	8-08-03209	1	Polypropylene
	8-08-03210	1	Fiber and Wire, High Density
	8-08-03214	1	Poly and Wire
2	8-08-03212	1	Polypropylene
	8-08-03211	1	Nylon
	0880-439	1	Wire Broom

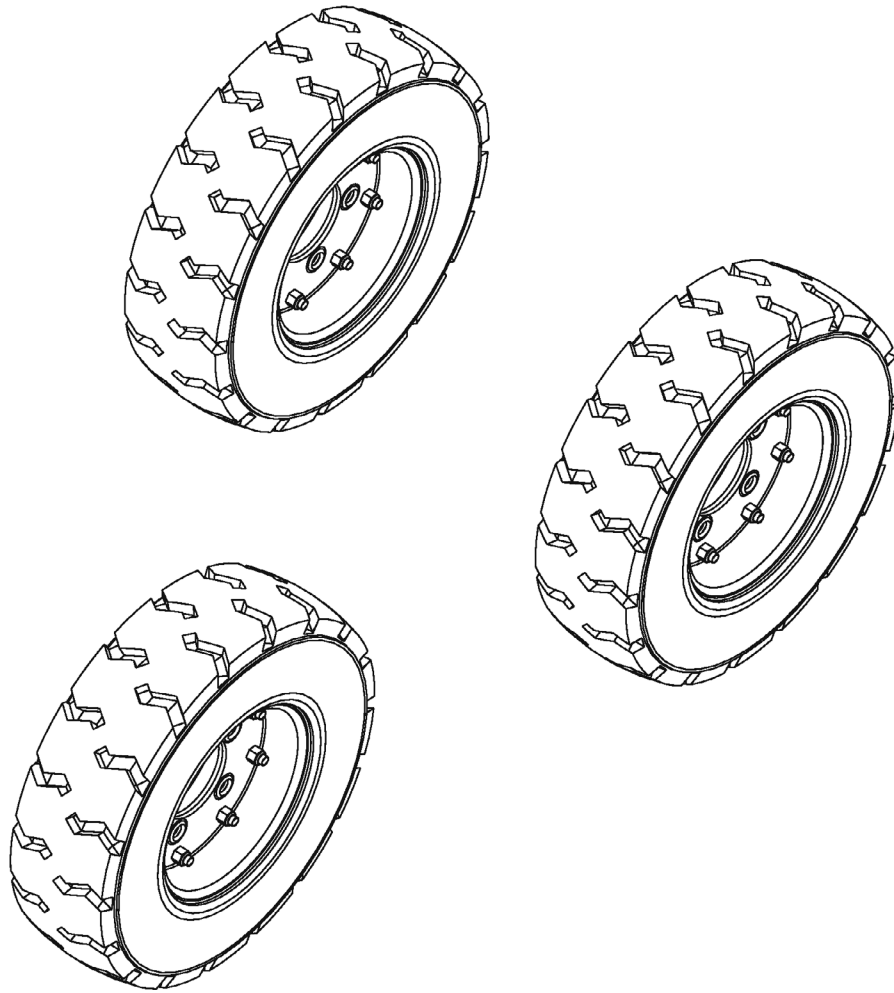


Item	Ref. No.	Qty	Description
	0880-392	1	Back-Up Alarm Option
1	2-00-00624	2	Nut, Hex MS #6-32 x .312 x .109
2	7-82-00009	1	Mechanical Switch
3	2-00-05060	2	Screw, #6-32 x 1.250 RHM
4	2-00-01499	2	Lock Washer, Helical Spring #6 Med
5	2-00-00455	2	Flat Washer, .375 x .156 x .046
6	2-00-04808	2	Terminal, #8 Screw
7	56409232	1	Backup Alarm
8	2-00-00828	1	Terminal
9	56409538	2	Insultaor-Terminal
10	2-00-00213	2	Screw, 5/16 - 18 x .625 HHC
11	2-00-02303	2	Lock Washer, 5/16 Int.
12	2-00-00409	2	Flat Washer, .687 x .343 x .062
13	2-00-00585	2	Nut, Hex 5/16 - 18 x .500 x .265
14	8-64-00008	1	Circuit Breaker
15	8-11-00044	1	Boot
16	8-11-00015	1	Terminal
17	7-35-00013	1	Insulation

5/09

TIRE OPTIONS

5/10

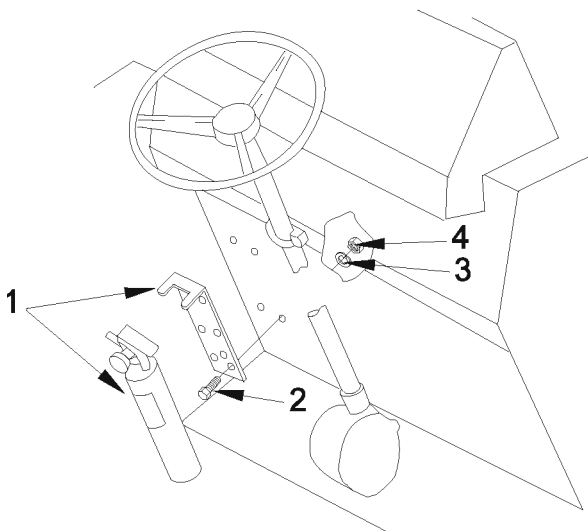
Granterra**7**

Item	Ref. No.	Qty	Description
	0780-683	1	Foam Filled Tire Option
1	7-89-08273	1	Wheel Assy. - Pneumatic Foam-Fill - Rear
2	8-89-08056	2	Wheel Assy. - Pneumatic Foam-Fill - Front

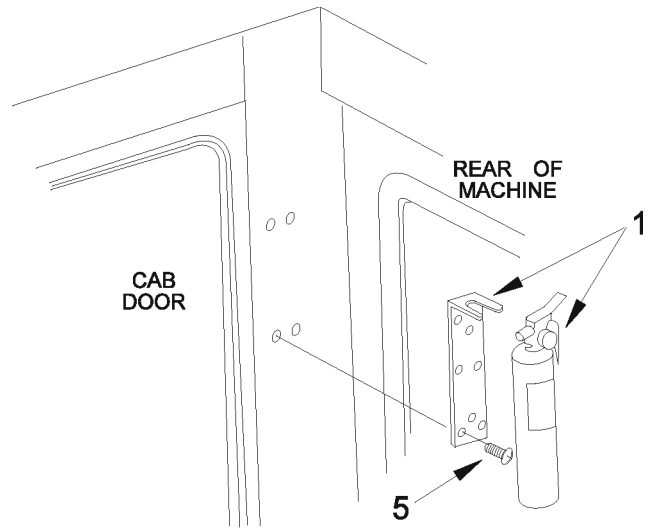
Item	Ref. No.	Qty	Description
	0780-684	1	Soft Shoe HP Tire Option
1	8-89-08060	1	Solid Pneumatic Soft Shoe Lug Tread - Rear
2	8-89-08055	2	Solid Pneumatic Soft Shoe Lug Tread - Front

Service Parts

Tire Only 8-85-06019 (front & rear)



FIRE EXTINGUISHER
IN DRIVER COMPARTMENT



FIRE EXTINGUISHER
IN CAB

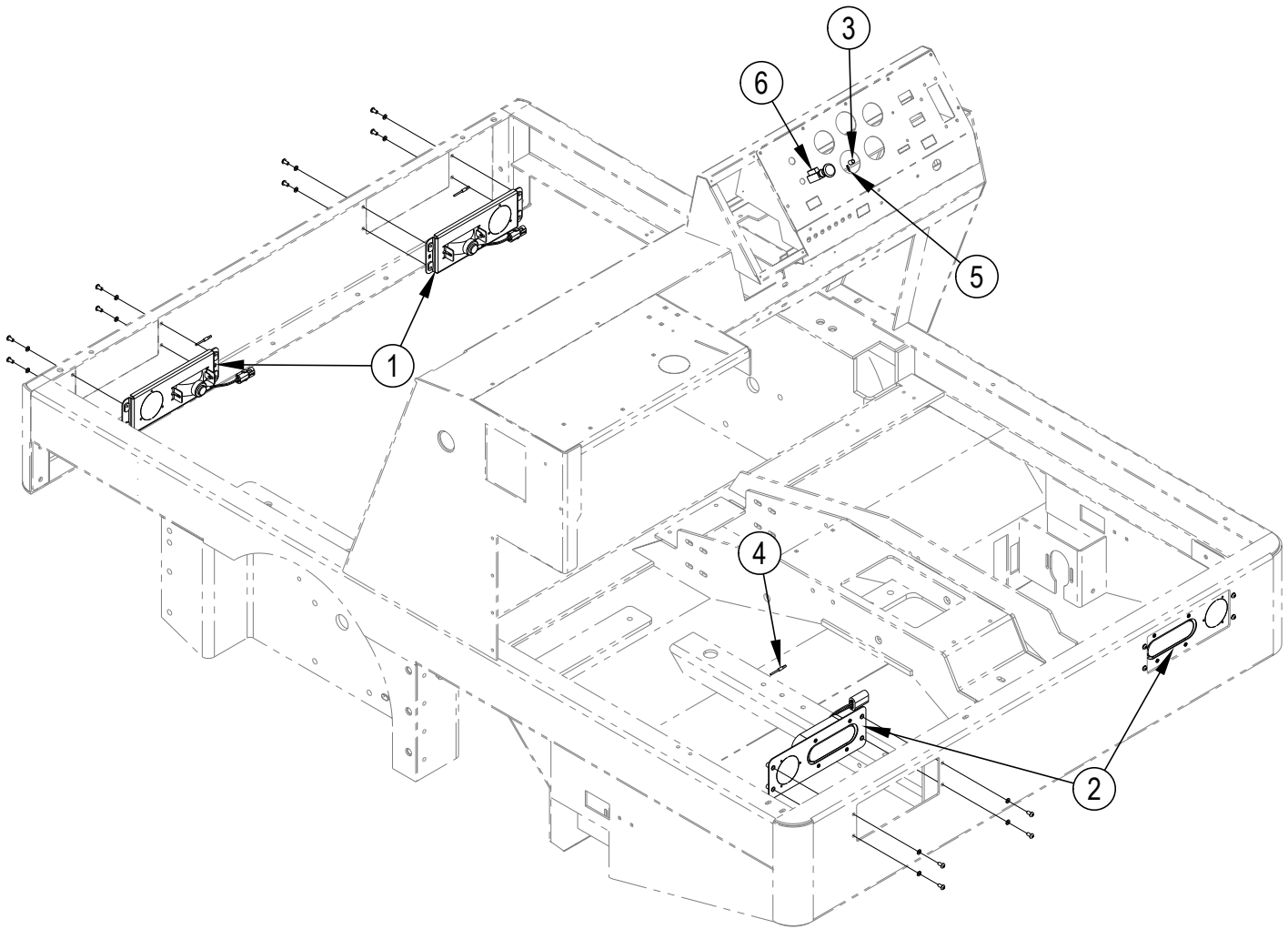
5/09

FIRE EXTINGUISHER OPTION

Granterra

9

Item	Ref. No.	Qty	Description
	0880-639	1	Fire Extinguisher Option
1	8-83-04033	1	Fire Extinguisher
2	2-00-00221	4	Screw, 1/4 - 20 x .750 HHC
3	2-00-00518	4	Lock Washer, Helical Spring 1/4 Med
4	2-00-00594	4	Nut, Hex MS 1/4 - 20 x .437 x .187
5	2-95-01998	4	Screw, #1/4 - 10 x .750 T/F RH



5/09

LIGHT PACKAGE OPTION - 0880-351

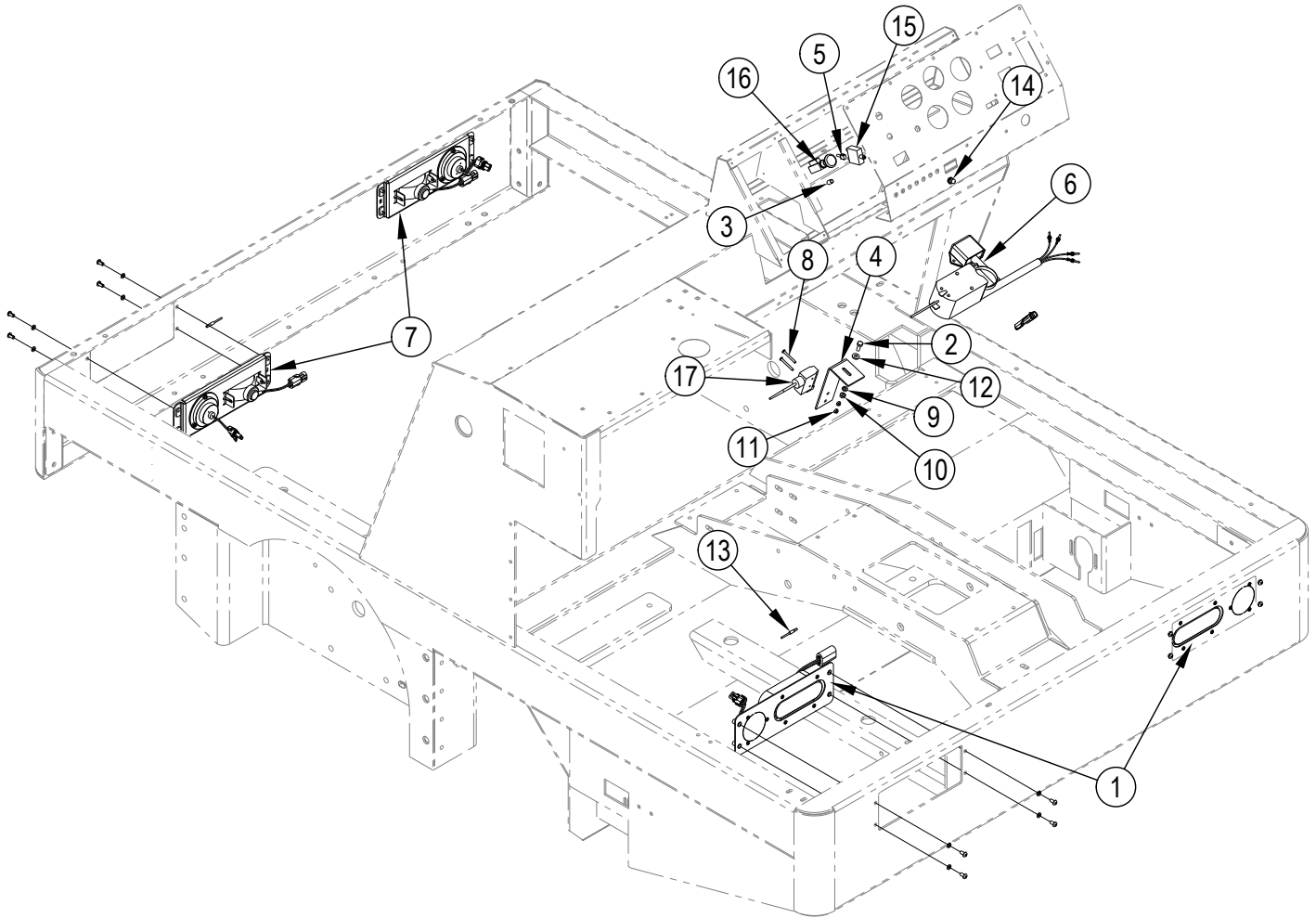
4/13

Granterra

11

Item	Ref. No.	Qty	Description
	0880-351	1	Light Package Option
1	56514920	1	Kit-Front Light
2	56514921	1	Kit-Rear Light
3	2-00-04588	1	Nut-Wire
4	2-00-04578	4	Terminal (.156 Male)
5	2-00-05183	1	Terminal-.25f Iso (Male)
6	8-82-00027	1	Light Switch
[]	8-40-05030	3	Light-Instrument
[]	8-90-07358	4	Wire, Ground

[] = Not Shown



5/09

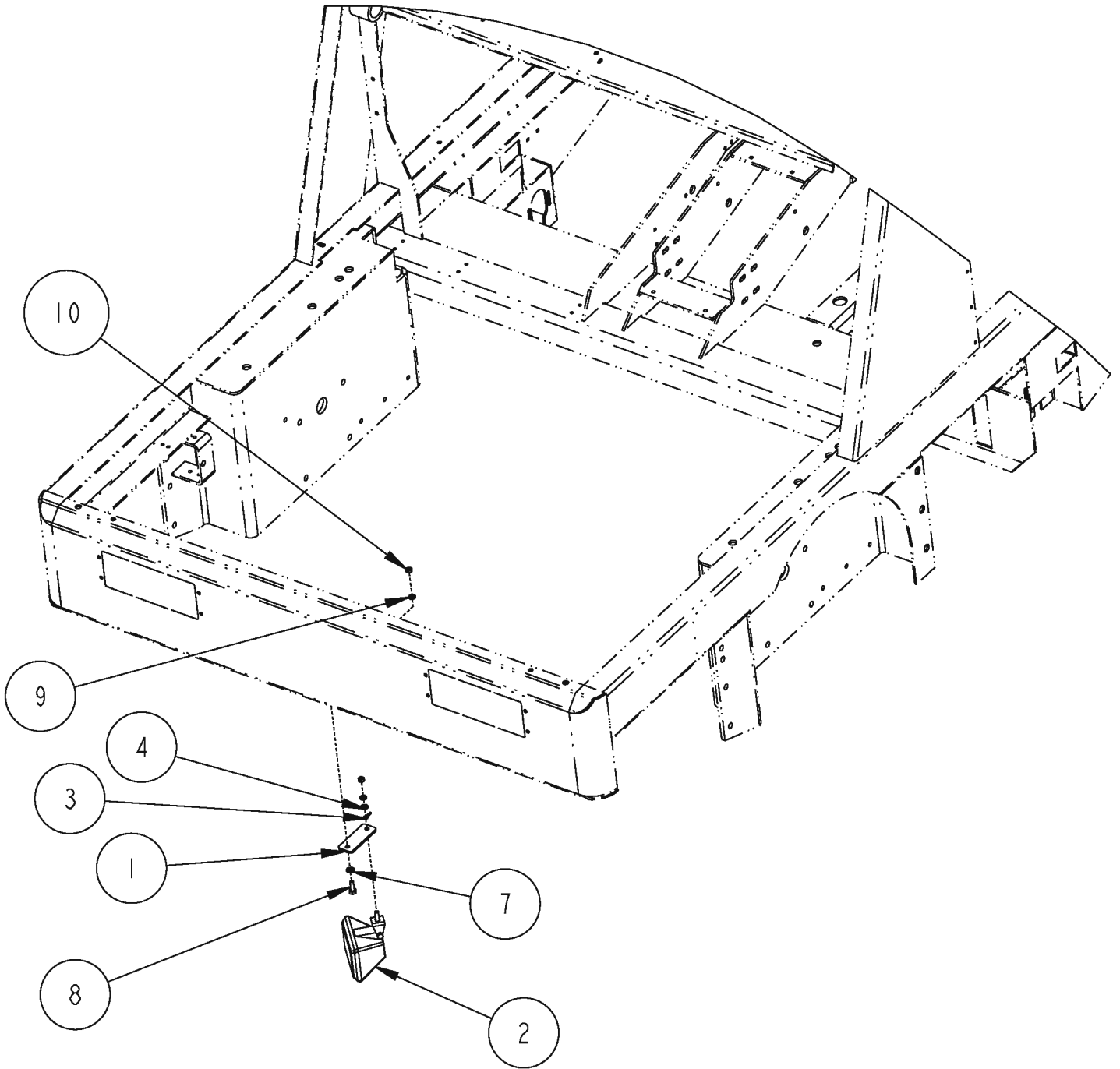
LIGHT PACKAGE OPTION - 0880-355

4/13

Granterra**13**

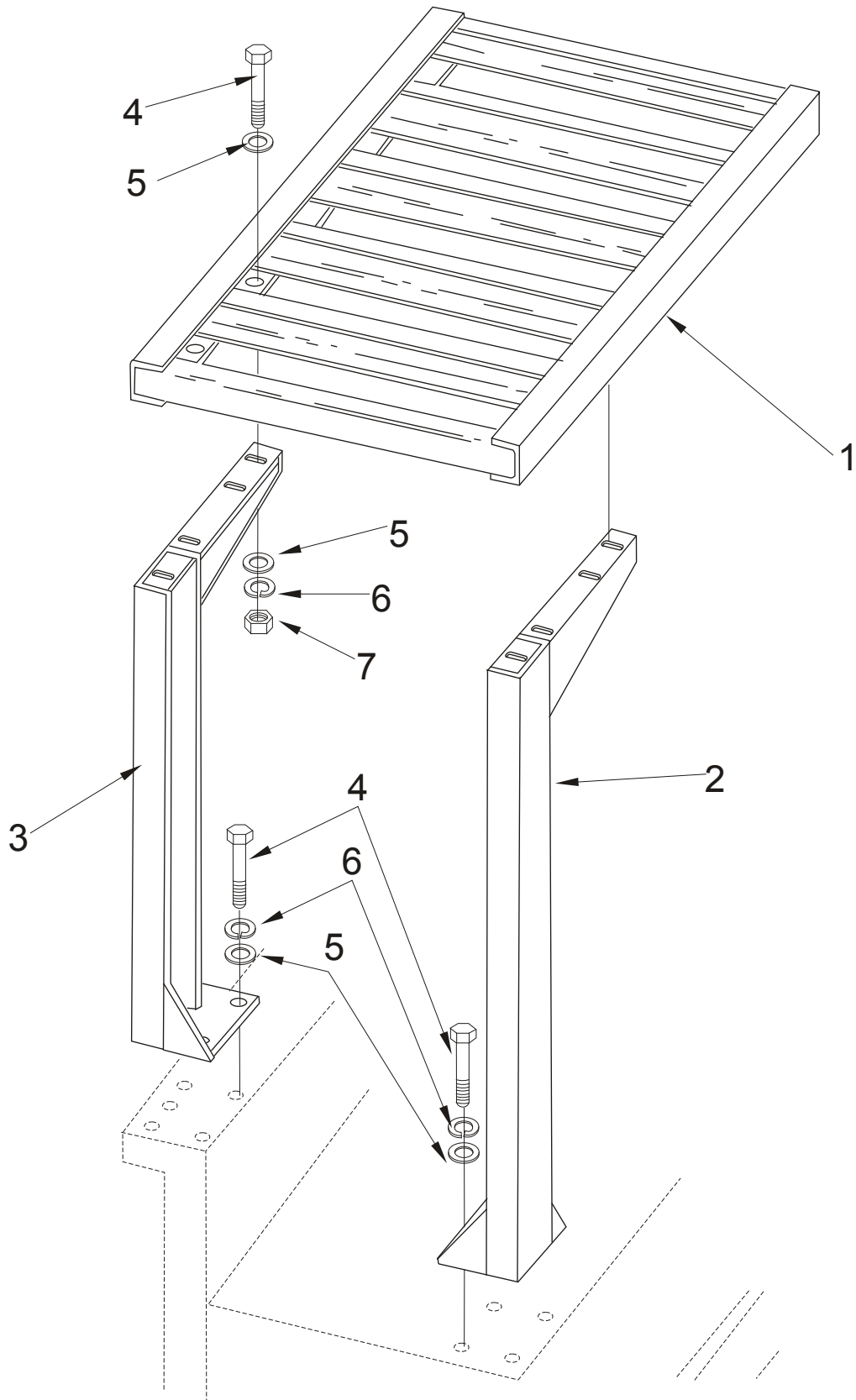
Item	Ref. No.	Qty	Description
	0880-355	1	Light Package Option
1	56514922	1	Kit-Rear Light W/Turn Signal
2	2-00-00221	1	Scw-Hhc .25-20 X .75 Gr 8 Zn
3	2-00-04588	1	Nut-Wire
4	8-08-00865	1	Bracket-Brake Light
5	8-11-00015	1	Connector
6	8-82-00025	1	Signal Switch Assembly
7	56514899	1	Kit-Front Light W/Turn Signal
8	2-00-00090	2	Screw, #8-32 X 1.50 LG, RHM
9	2-00-00518	1	Washer,Lock,1/4" Helical Spring
10	2-00-00594	1	Nut, Hex 1/4-20
11	2-00-01372	2	Nut, Hex, #8-32 Fiber Lock
12	2-00-03702	1	Washer, .625 X .281 X .063
13	2-00-04578	4	Terminal (.156 Male)
14	8-11-00044	1	Boot
15	8-64-00008	1	Circuit Breaker- 15 Amp
16	8-82-00027	1	Light Switch
17	8-82-00058	1	Switch
[]	8-40-05030	3	Light-Instrument
[]	7-90-07229	1	Wire - Dust Vac Option
[]	8-90-07358	4	Wire, Ground

[] = Not Shown



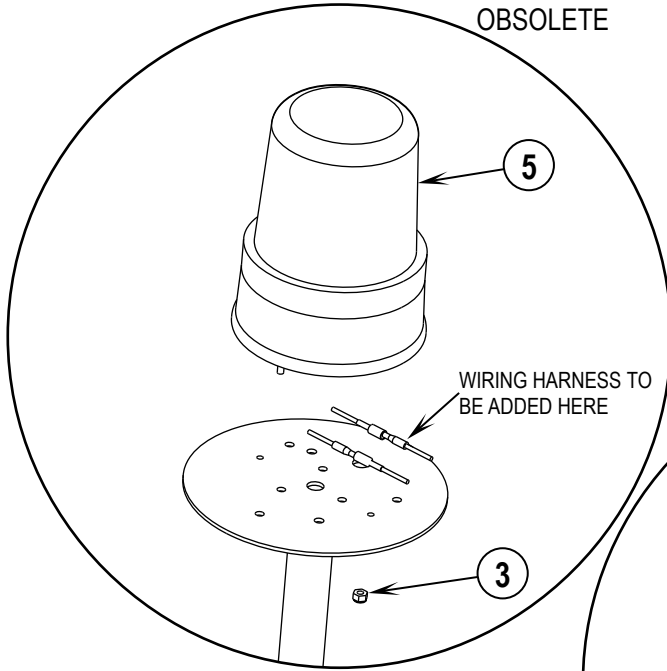
Item	Ref. No.	Qty	Description
	0880-361	1	Curb Light Option NOTE 1
1	7-08-01286	1	Bracket, Side Broom Light
2	56304768	1	Lamp-12V
3	2-00-04282	1	Ring Terminal
4	2-00-02303	1	Lock Washer, 5/16 HS Med.
5	2-00-04578	1	Terminal (.156 Male)
6	8-90-07358	1	Ground Wire
7	2-00-00409	1	Flat Washer, .687 x .344 x .062
8	2-00-02708	1	Screw, 5/16-18 x 1.0 Hex Head
9	2-00-00530	1	Lock Washer, 5/16
10	2-00-00585	1	Nut, 5/16-18 Hex

NOTE 1: HEADLIGHTS REQUIRED TO ACCOMPANY THIS OPTION

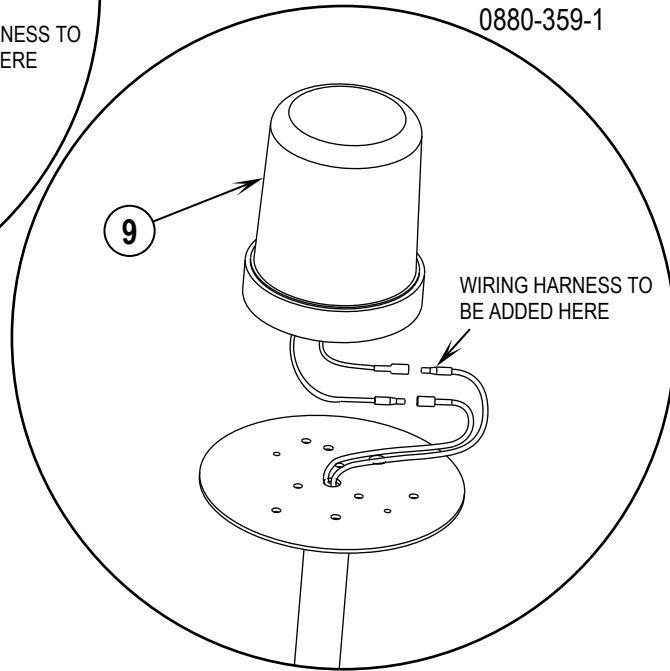


Item	Ref. No.	Qty	Description
	56516756	1	Overhead Guard Option
1	56514900	1	Guard
2	56516762	1	Right Hand Upright Guard
3	56516759	1	Left Hand Upright Guard
4	2-00-00240	16	Screw, 1/2-13 x1.250 HHC
5	2-00-00420	4	Flat Washer, 1.000 x .515 x .0622
6	2-00-02312	16	Lock Washer, Helical Spring 1/2 Med
7	2-00-00596	8	Nut, Hex 1/2-13 x.750 x .515

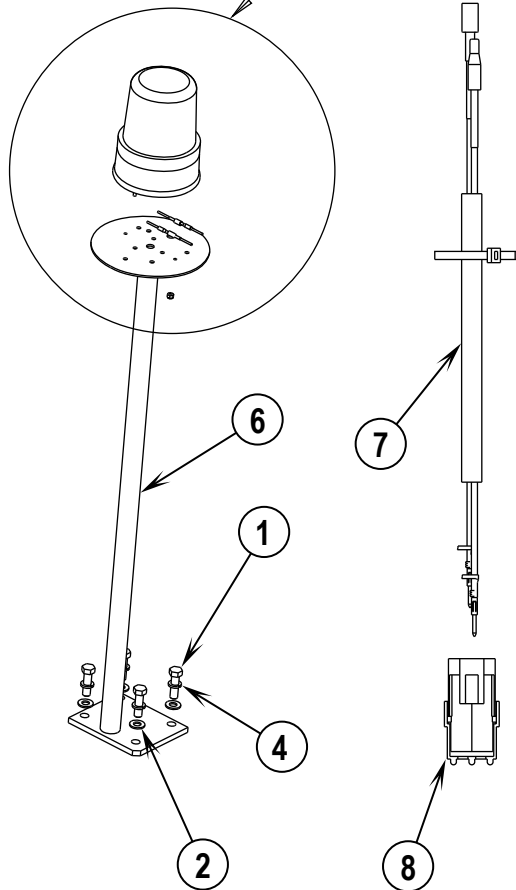
OBSOLETE



0880-359-1



See Detail



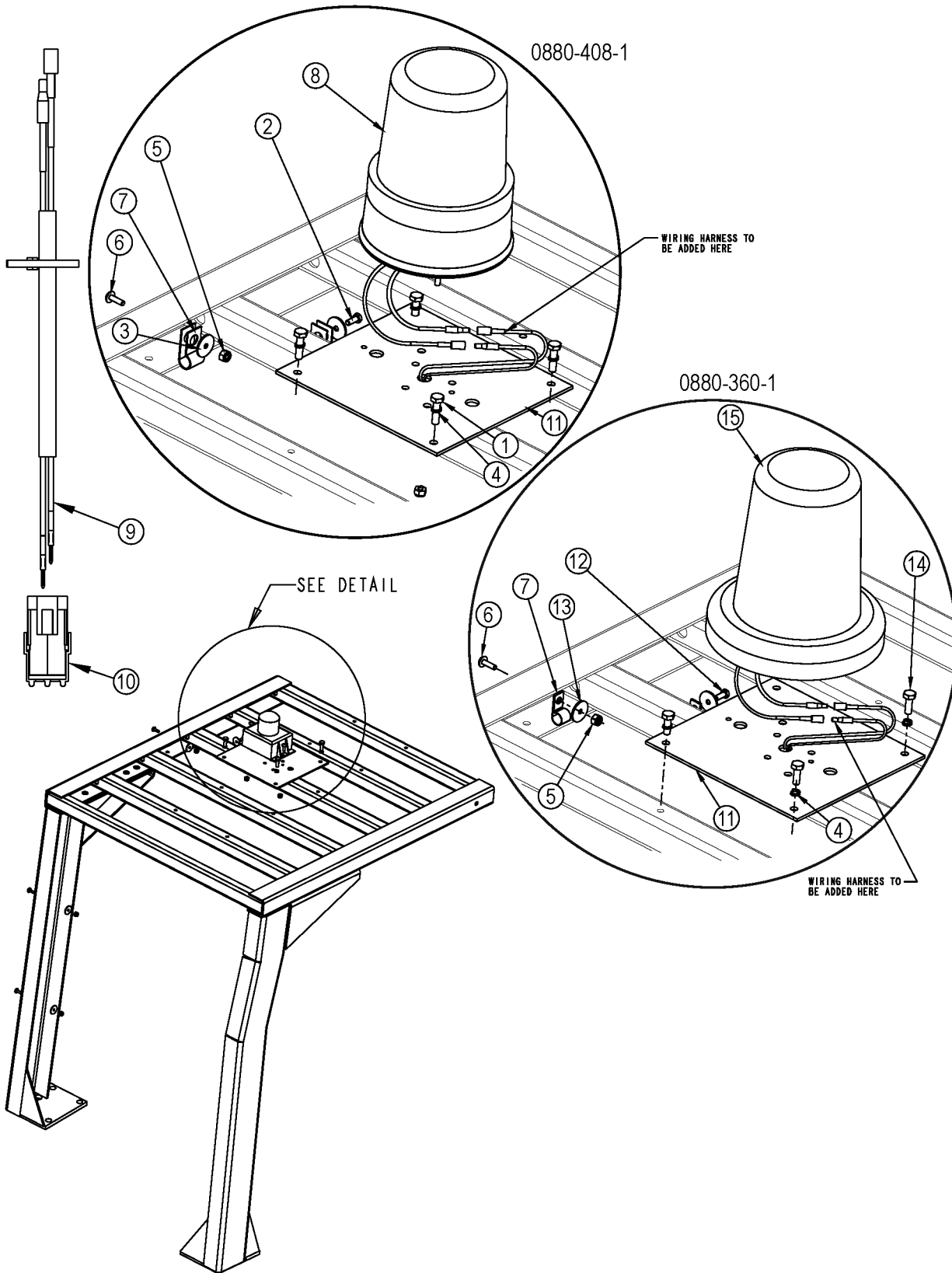
5/09

WARNING LIGHT OPTIONS [WITHOUT OHG]

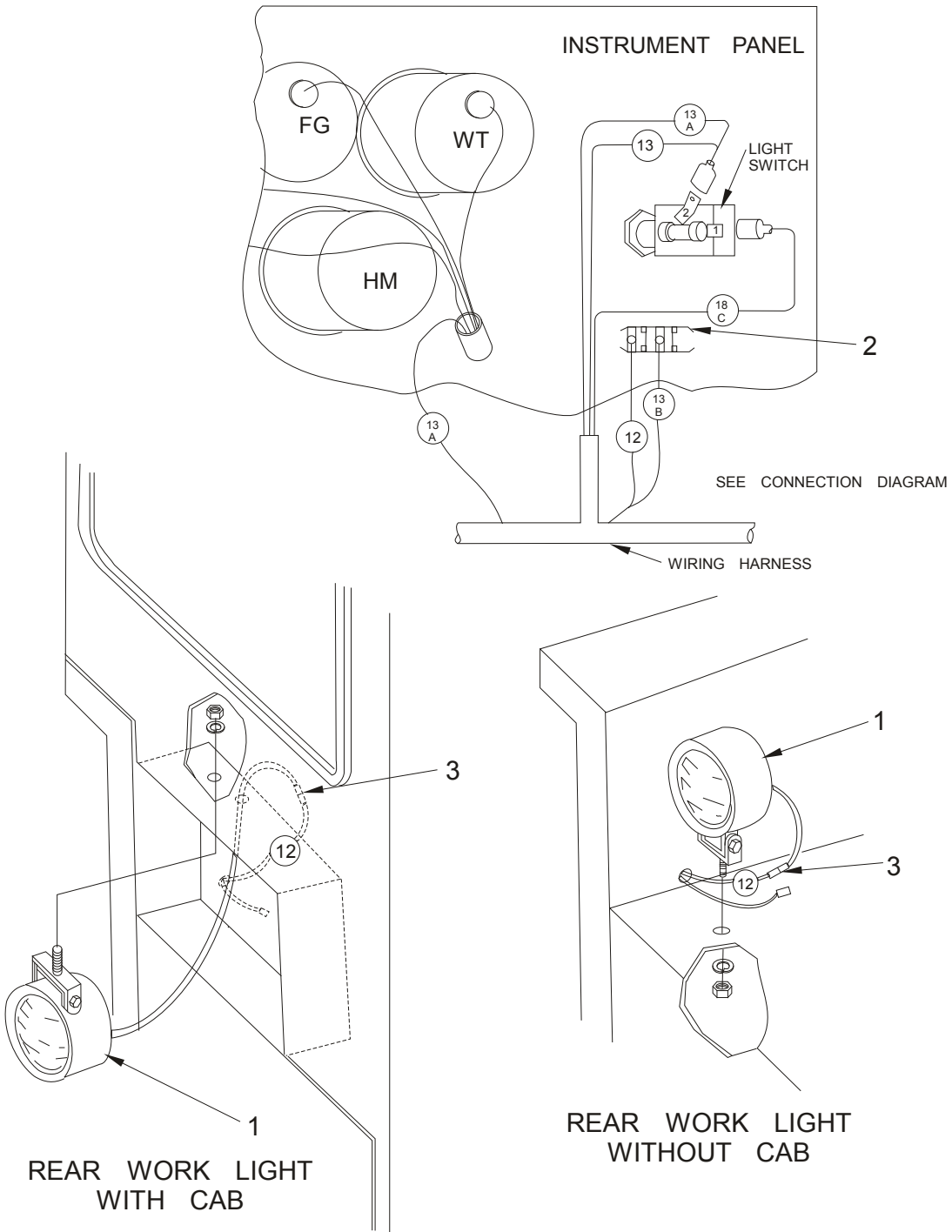
4/13

Granterra**19**

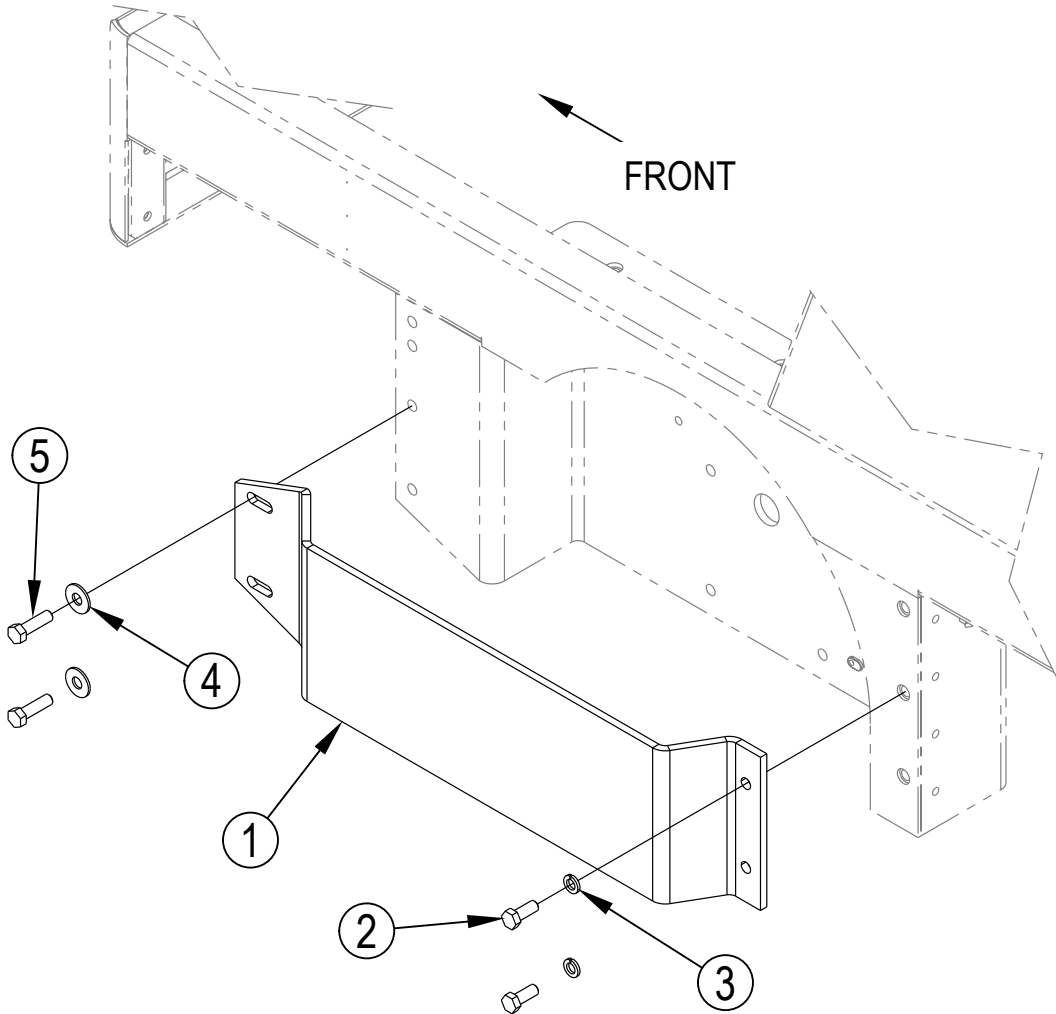
Item	Ref. No.	Qty	Description
		1	Rotating Light Option (OBSOLETE)
	0880-359-1	1	Flashing Light Option
1	2-00-00241	4	Bolt 1/2-13 X 1-3/4 LG
2	2-00-00405	4	Flat Washer, 1.063 x .531 x .094
3	2-00-01246	2	Nut-#10-24 Elastic Stop Nut (Rotating Light Option)
4	2-00-02312	4	Washer, 1/2" Lock
5	8-40-05039	1	Warning Light, Amber Revolving (Rotating Light Option)
6	56514904	1	Pole, Light
7	56109254	1	Harness, Warning Light
8	56462360	1	Connector, 2-Way
9	8-40-05041	1	Light, Emergency, Amber (Flashing Light Option)



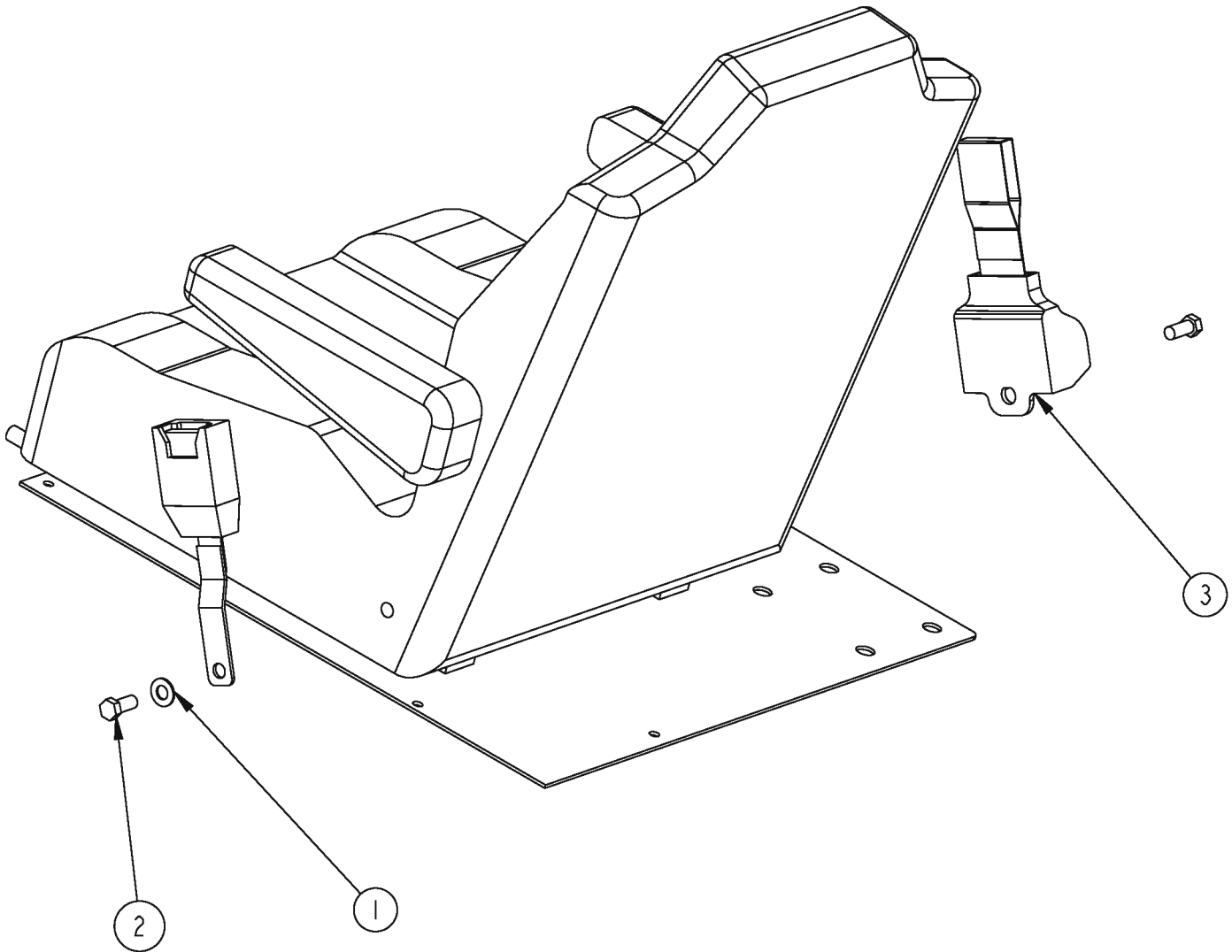
Item	Ref. No.	Qty	Description
	0880-408-1	1	Rotating Light Option
1	56002883	4	Scr, Hex SS 1/4-20 x 1.00
2	56009039	1	Scr, Hex Thd Form 10-24 X .50
3	56009096	4	Wsh, Flt .193 X .875 X .060
4	2-00-00548	4	1/4" Lock Washer
5	2-00-01246	5	Nut-#10-24 Elastic Stop Nut
6	2-00-03062	3	Screw, #10-24 X 5/8 LG
7	2-00-04602	4	Clamp
8	8-40-05039	1	Warning Light, Amber Revolving
9	56109253	1	Harness, Warning Light
10	56462360	1	Connector, 2-Way
11	56514906	1	Plate, Flasher
Item	Ref. No.	Qty	Description
	0880-360-1	1	Flashing Light Option
4	2-00-00548	4	1/4" Lock Washer
5	2-00-01246	3	Nut-#10-24 Elastic Stop Nut
6	2-00-03062	3	Screw, #10-24 X 5/8 LG
7	2-00-04602	4	Clamp
9	56109253	1	Harness, Warning Light
10	56462360	1	Connector, 2-Way
11	56514906	1	Plate, Flasher
12	56009039	1	Scr, Hex Thd Form 10-24 X .50
13	56009096	4	Wsh, Flt .193 X .875 X .060
14	2-00-00221	4	Bolt-Hex Head, Finished, 1/4-20x3/4 LG
15	8-40-05041	1	Light, Emergency, Amber



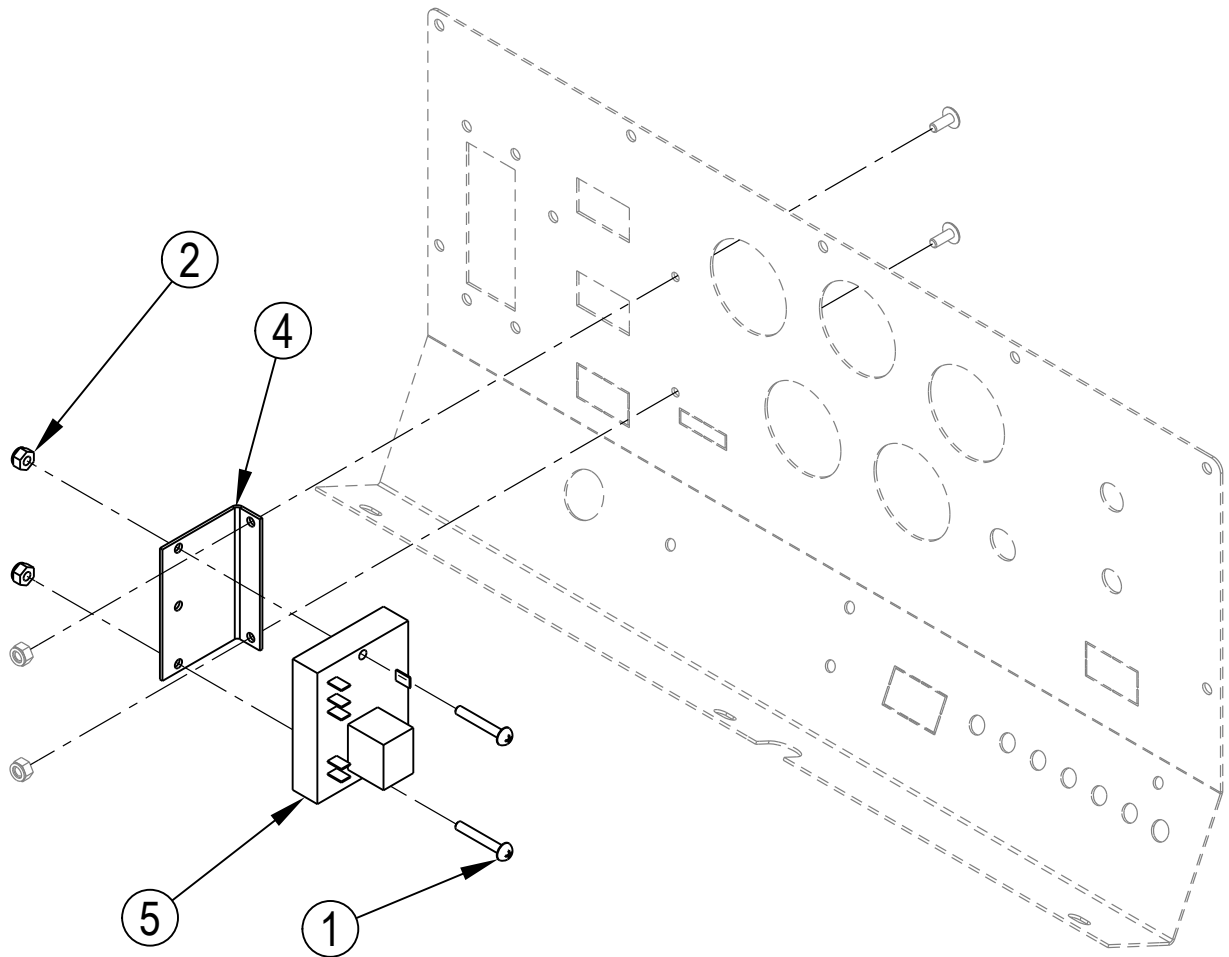
Item	Ref. No.	Qty	Description
	0880-391	1	Rear Work Light Option
1	56304768	1	Lamp-12V
2	56381824	1	Switch Rocker DPDT ON-ON
3	2-00-04578	1	Terminal, Male Bullet



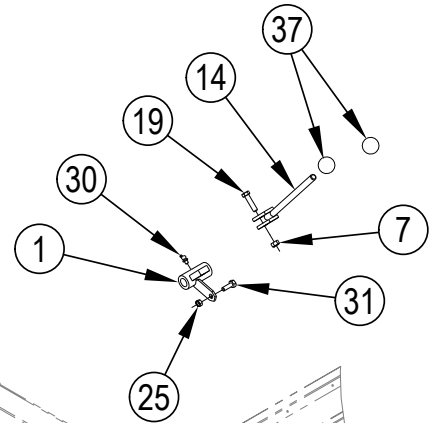
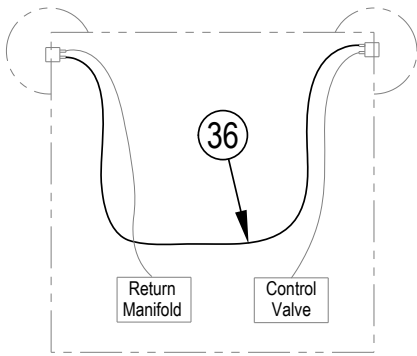
Item	Ref. No.	Qty	Description
		1	Front Wheel Guards Option (OBSOLETE)
1	56516864	2	Guard, Front Wheel
2	2-00-00240	4	Screw, 1/2-13 x 1.25 HHC
3	2-00-02312	4	Lock Washer, 1/2 Helical Spring
4	2-00-04159	4	Flat Washer, 9/16 ID
5	2-00-00241	4	Screw, 1/2-13 x 1.75 HHC



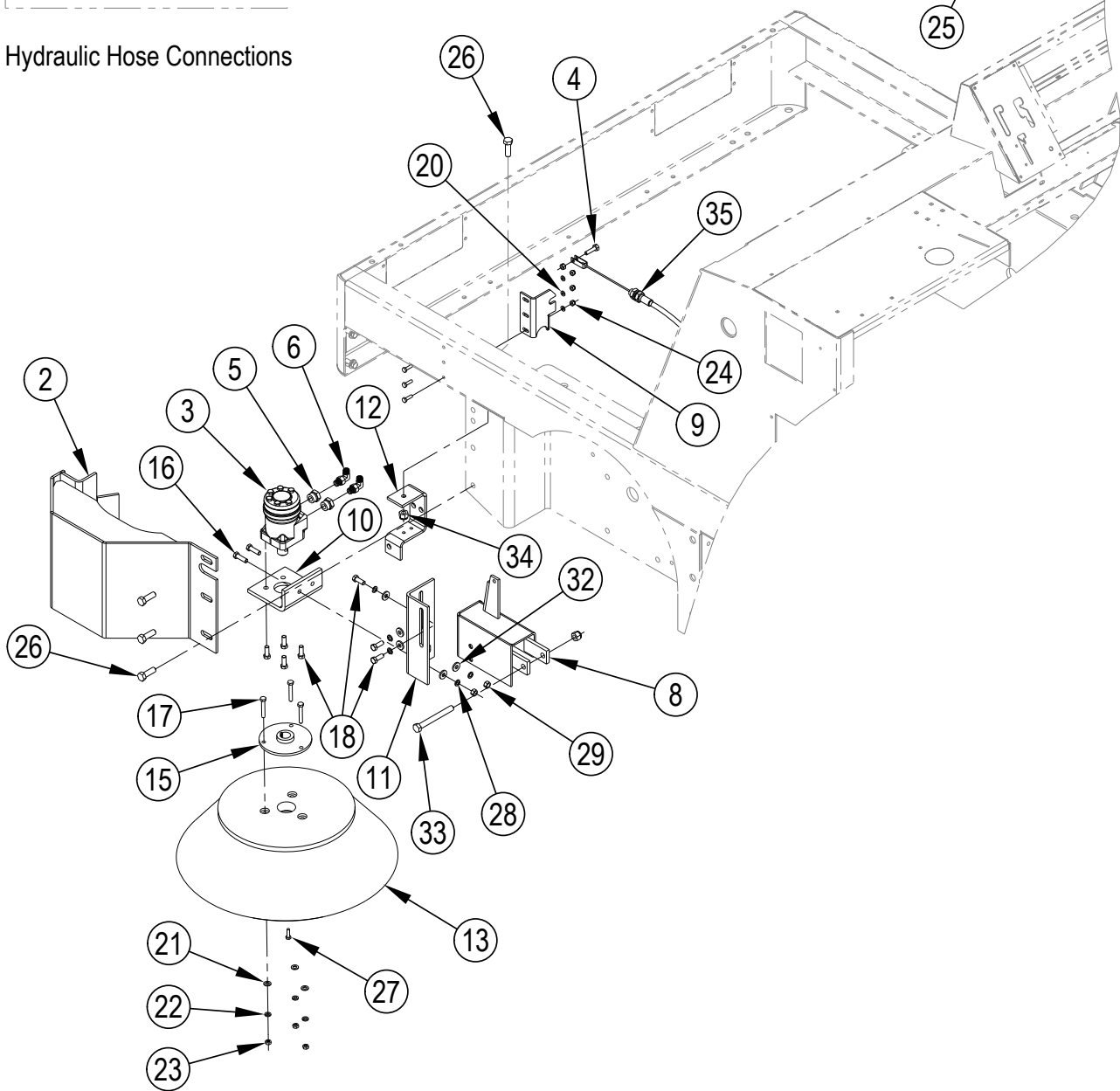
Item	Ref. No.	Qty	Description
	0880-720	1	Retractable Seat Belt Option
1	2-00-00415	1	Washer, .94 ID x .47 OD x .062
2	2-00-03334	2	Screw, 7/16-20 x .75
3	56109301	1	Retractable Seat Belt



Item	Ref. No.	Qty	Description
	56516764	1	Timed Filter Shaker Motors Option
2	2-00-01246	2	Nut-#10-24 Elastic Stop Nut
4	56516763	1	Bracket, Timer Relay
5	8-64-05011	1	Timer Relay (20-second delay)
7	2-00-00071	2	Screw #10-24 x 1.25 lg



Hydraulic Hose Connections



5/09

LEFT SIDE BROOM OPTION

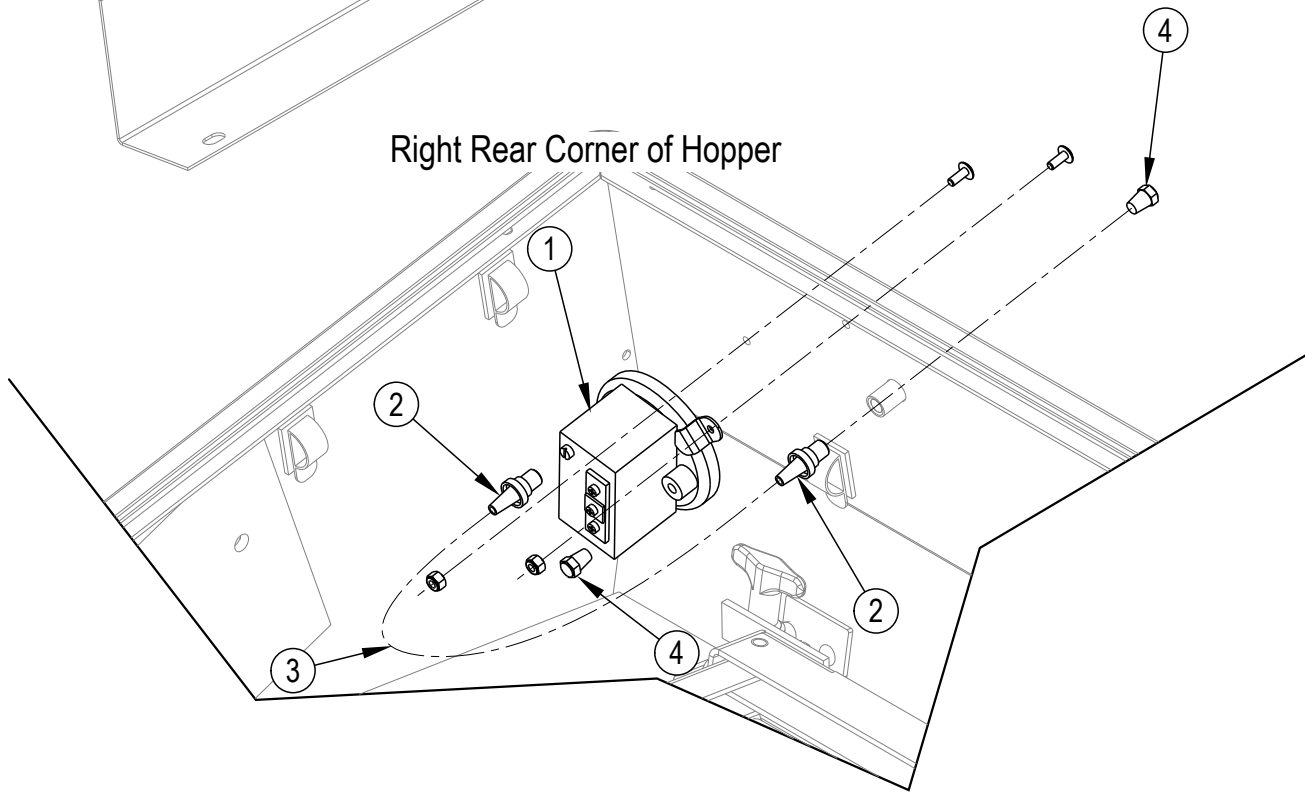
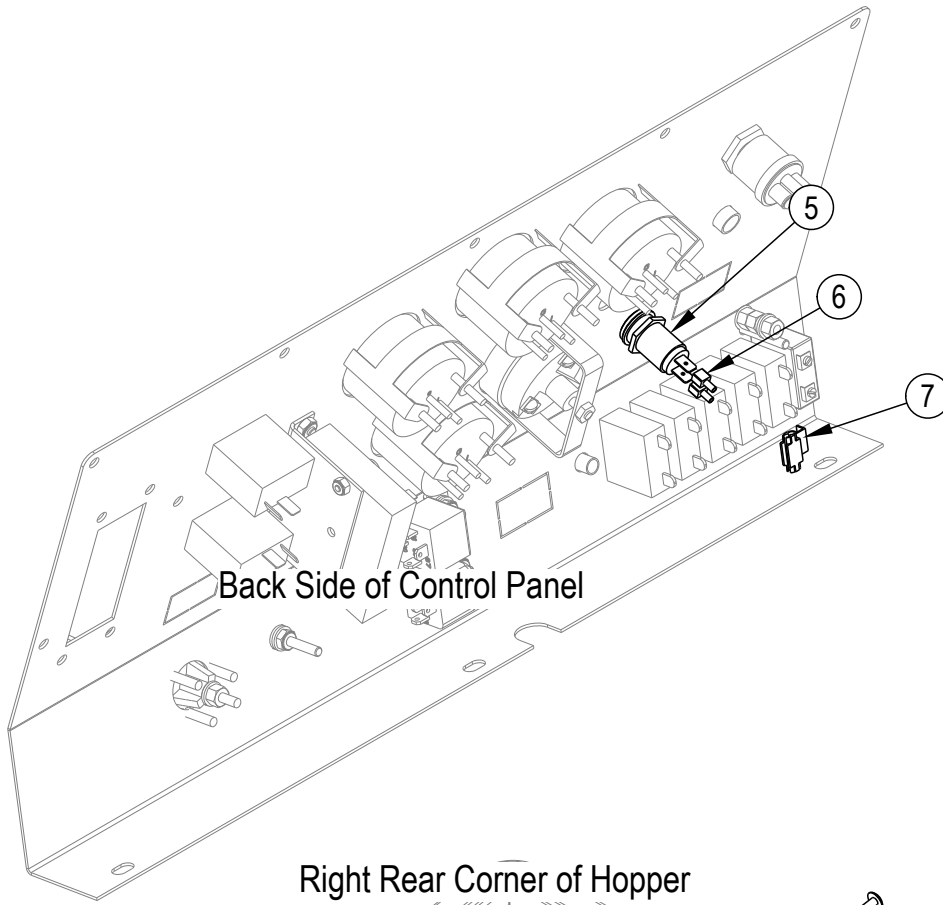
7/12

Granterra

27

Item	Ref. No.	Qty	Description
	56516861	1	Left Side Broom Option
1	56516810	1	Pivot- Side Broom Weldment
2	56516862	1	Weldt-Side Broom Guard
3	0882-047	1	Side Broom Motor
4	2-00-00207	1	Screw, Hex Head 5/16-18 X 1.25"
5	2-00-04915	2	Fitting-Reducer Sae 10 / Sae 6
6	2-00-04926	2	Fitting-90 Sae6 To Ors4
7	2-95-04182	1	Nut, Hex, Stop, 3/8-16
8	8-03-04284	1	Weldt-Side Broom Arm Lh
9	8-08-00716	1	Cable / Valve Mount
10	8-08-00739	1	Bracket-Side Broom Lift Arm
11	8-08-00740	1	Bracket-Side Brm Arm
12	8-08-00759	1	Bracket Side Broom Mnt L.H.
13	8-08-03211	1	Side Broom-Nylon
14	8-16-00034	1	Broom Lift Lever
15	8-25-06008	1	Flange-Curb Broom
16	2-00-00209	2	Bolt, Hex Head, 3/8-16 X 1 1/4 Ss
17	2-00-00218	3	Bolt-Hex Head, 5/16-18
18	2-00-00233	9	Bolt-Hex Head, Finished, 3/8-16 X 1.00
19	2-00-00234	1	Screw, 3/8-16 X 1-1/2 Hhc
20	2-00-00407	3	Washer, Flat 1/4
21	2-00-00409	3	Flat Washer, .687 X .344 X .062
22	2-00-00530	3	5/16" Lock Washer
23	2-00-00585	3	5/16-18, Hex Nut
24	2-00-00641	3	Nut, Fiber Insert 1/4-20
25	2-00-00644	2	Nut, Hex, Insert Fiber, 5/16-18
26	2-00-01254	4	Screw, Hex, 1/2-13 X 1.50
27	2-00-01490	4	1/4-20 X 0.875", Hex Head Screw
28	2-00-02310	7	Washer-Lock, 3/8", Helical Spring
29	2-00-02360	2	Nut, Hex, 3/8-16
30	2-00-02558	1	Grease Fitting
31	2-00-02708	1	Screw, Hex Head, 5/16-18 X 1.00"
32	2-00-04801	7	Flat Washer, 1.00 X .39 X .06
33	2-00-04914	1	Screw 1/2-13 X 4.5" Lg
34	2-00-04936	2	Locknut-Elastic, 1/2-13
35	8-10-00030	1	Cable-Fwd / Rev
36	8-33-02280	1	Hose-#4 Str-Str,9/16-18 Both Ends,190.0 Lg
37	8-39-00002	2	Control Knob, Small

Item	Ref. No.	Qty	Description
	0880-353	1	Wet Sweep Bypass Option
1	8-11-00044	1	Circuit Breaker Boot
2	8-64-00008	1	Circuit Breaker (15A)
3	2-00-00594	2	Nut, Hex 1/4 - 20 x .437 x .218
4	2-00-00518	2	Lock Washer, Helical Spring 1/4 Med
5	8-08-00590	1	Bracket
6	8-88-00042	1	Valve, Solenoid N.C.
	7-14-07005	1	Coil
7	2-00-04970	1	ORFS Connector, 3/4-16 / 13/16-16
8	2-00-02589	2	Screw, 1/4 - 20 x 2.000 HHC
9	8-33-02193	2	Hose, Hydraulic ORS 8/ str.ends - 18"
10	2-00-04928	2	ORFS Run Tee, 13/16 - 16
11	2-00-04885	1	ORFS 90° Elbow, 3/4-16 / 13/16-16
12	8-82-00044	1	Switch SPST



5/09

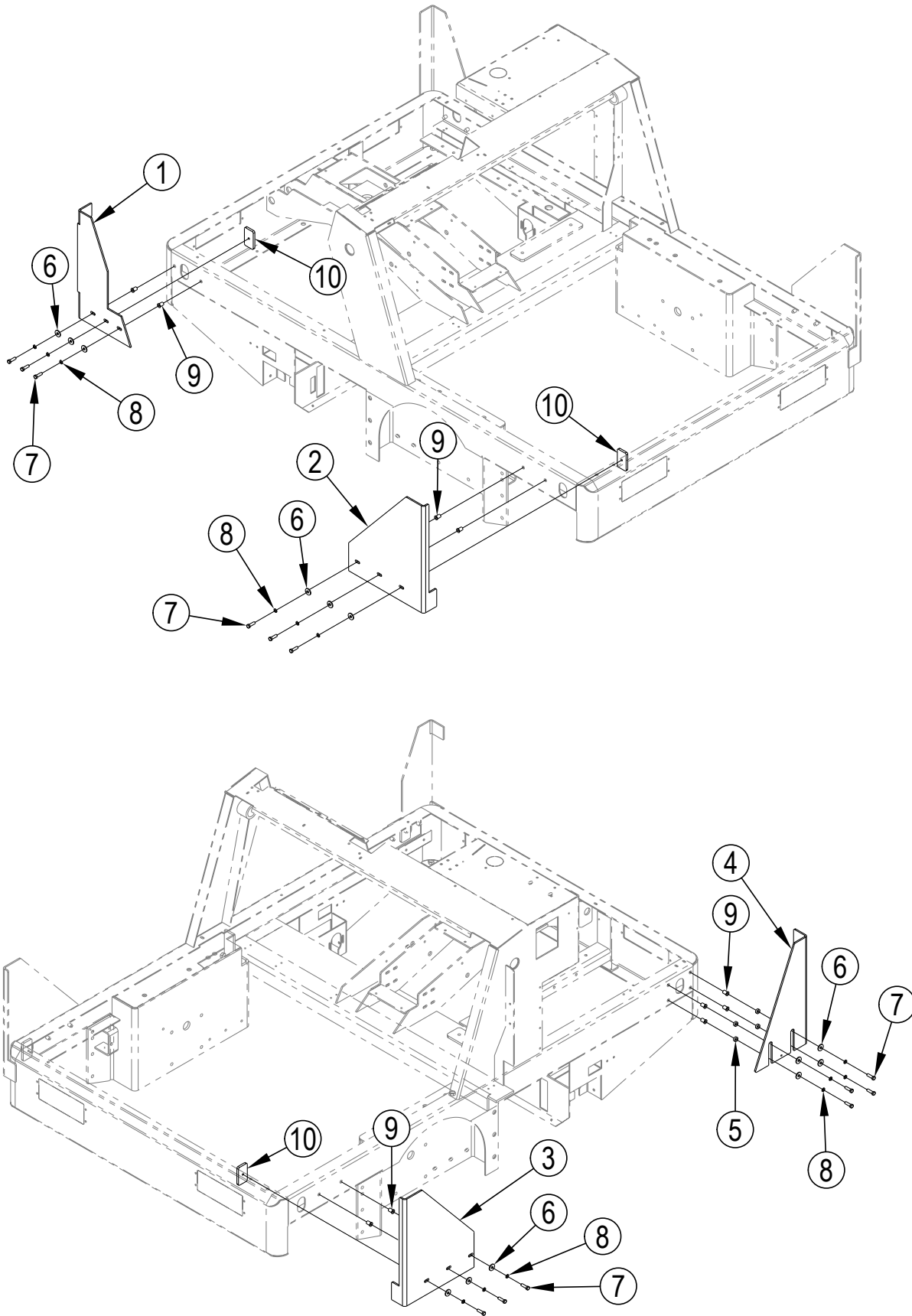
CLOGGED FILTER INDICATOR OPTION

11/12

Granterra**31**

Item	Ref. No.	Qty	Description
	0880-523	1	Clogged Filter Indicator Option
1	8-63-05014	1	Clogged Filter Switch
2	2-00-04518	2	Fitting
3	7-87-02155	1	Tube-Detergent Feed .25x8.0
4	8-24-04075	2	Filter Plg
5	56305660	1	Light Red Led Indicator
6	2-00-03418	2	Spade Terminal-Female
7	2-00-04479	2	Quick Connect-Splice
[]	2-00-03261	1	Grom-Bat Cable Atlantic India
[]	2-00-04626	1	Terminal-Bullet Female
[]	2-00-04742	1	Terminal
[]	3-61-00189	1.4"	16ga Stranded Blk Insul Wire
[]	3-61-00249	9.4"	16 Stranded Green Insul
[]	56383155	1	Decal-Hopper Filter

[] = Not Shown



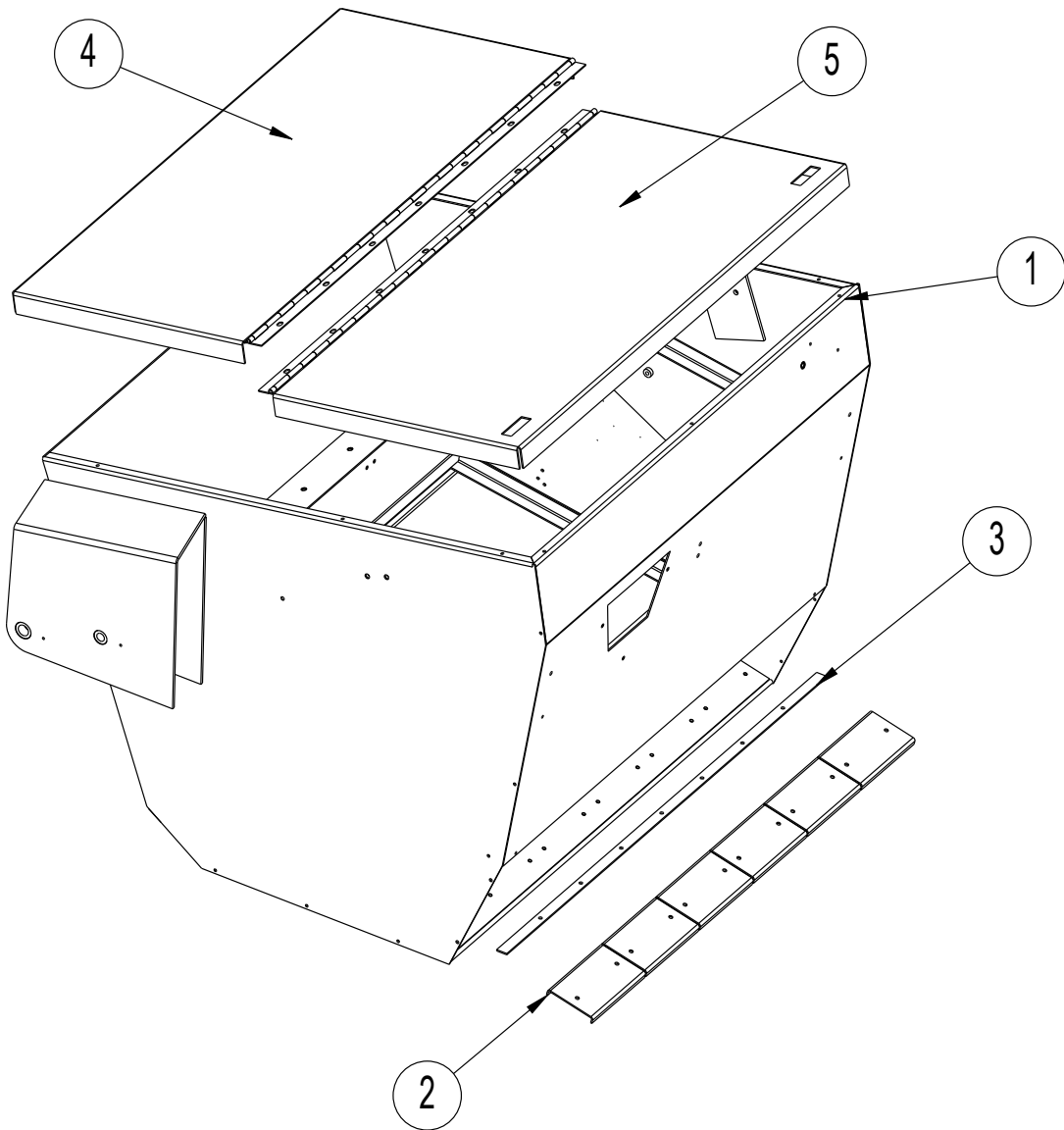
5/09

EXTERNAL PROTECTION PACKAGE OPTION

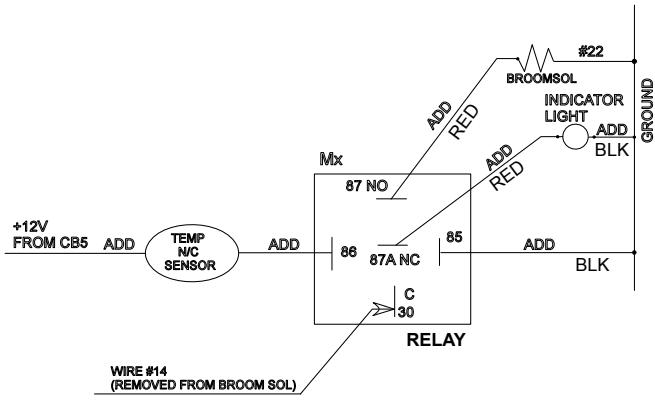
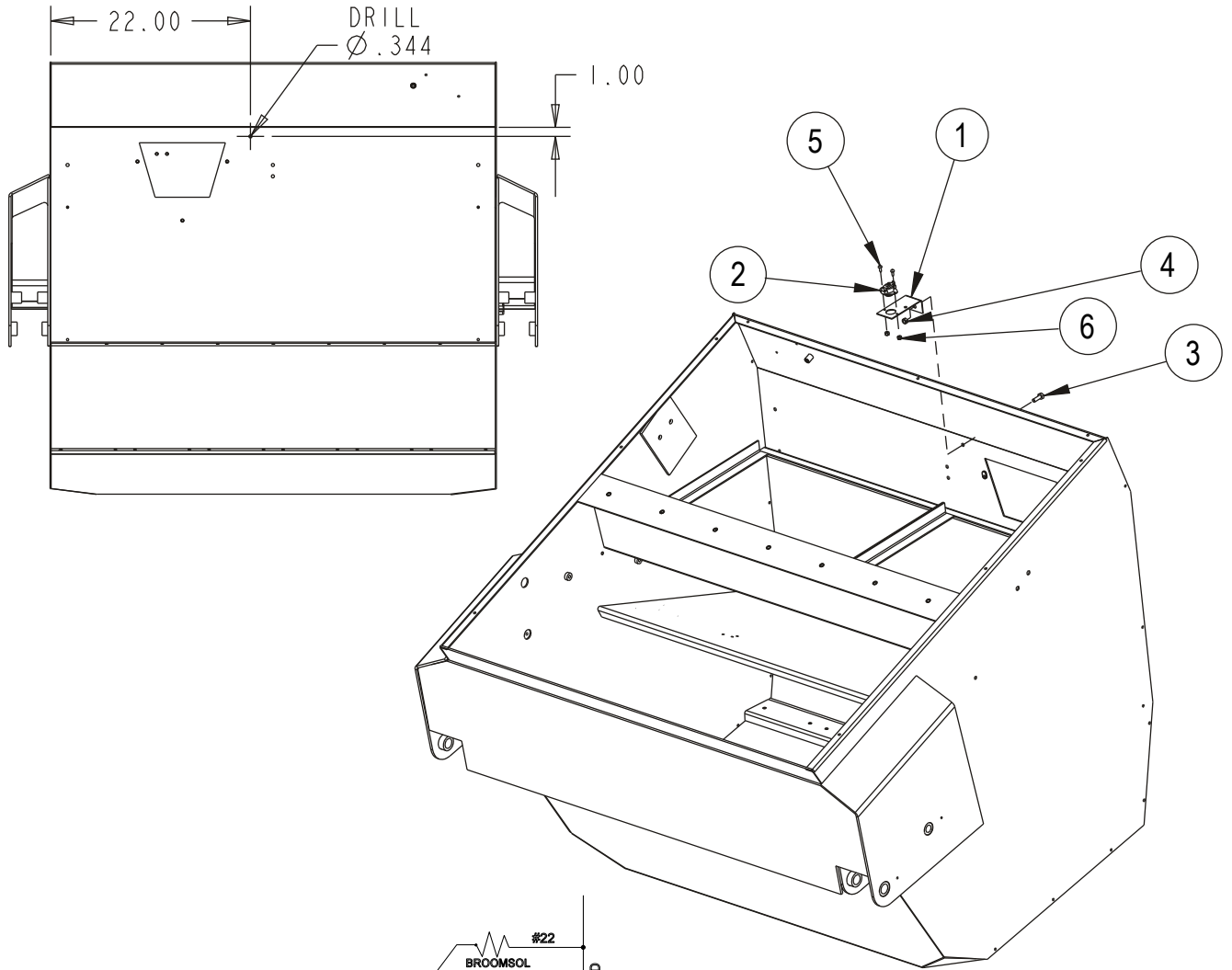
1/14

Granterra**33**

Item	Ref. No.	Qty	Description
	56516847	1	External Protection Package Option
1	56516848	1	Tower Bumper, RH Rear
2	56516849	1	Tower Bumper, RH Front
3	56516850	1	Tower Bumper, LH Front
4	56516851	1	Tower Bumper, LH Rear
5	8-09-01089	4	Bushing
6	2-00-03266	13	Flat Washer
7	56001858	13	Scr Hex 3/8-16 X 1.25
8	2-00-02310	13	Lock Washer, 3/8 Heliccal Spring
9	2-00-05347	10	Insert, 3/8-16 Threaded
10	56383771	3	Thread Plate-Tower Bumper



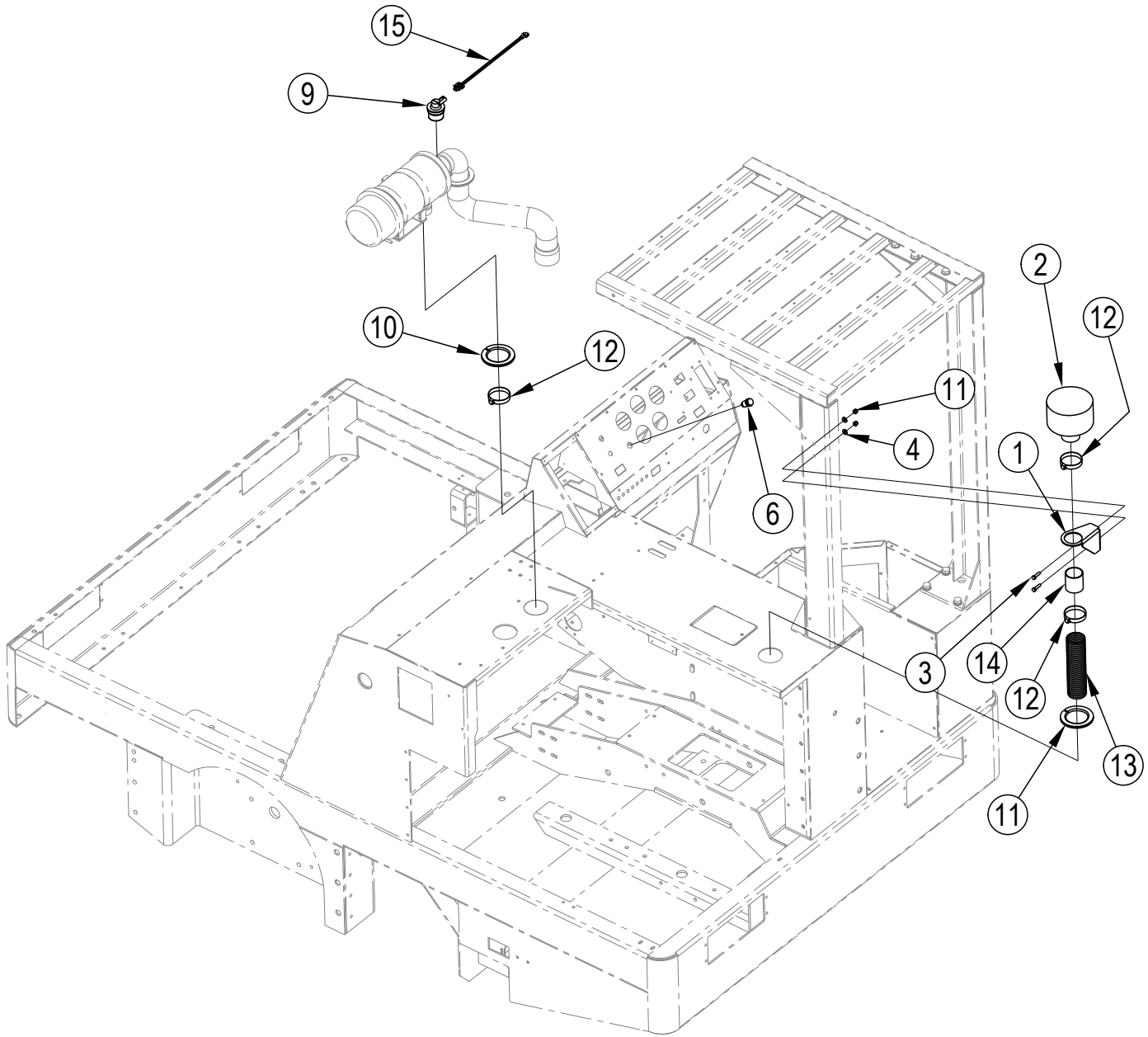
Item	Ref. No.	Qty	Description
		1	Stainless Steel Hopper Option (OBSOLETE)
1	56516869	1	Hopper, Stainless Steel
2	8-13-07084-1	6	Clamp, Hopper Bottom Flap
3	56516870	1	Strap, Primary Deflector Flap
4	56516872	1	Cover-Lower S/S With S/S Hinge
5	56516871	1	Cover-Upper S/S With S/S Hinge



Item	Ref. No.	Qty	Description
	0780-694	1	Hopper High Temp Shutdown Option
1	8-08-00803	1	Bracket, Temperature Switch
2#	56418405	1	Switch Temperature
3	2-00-00208	1	Screw, 5/16-18 x .750 HHC
4	2-00-00644	1	Nut, 5/16-18 Fiber Insert Hex
5	2-00-00049	2	Screw, 10-24 x 1/2 RHM
6	2-00-01246	2	Nut, 10-24 Elastic Stop
[]	56383156	1	Decal-Hopper Fire

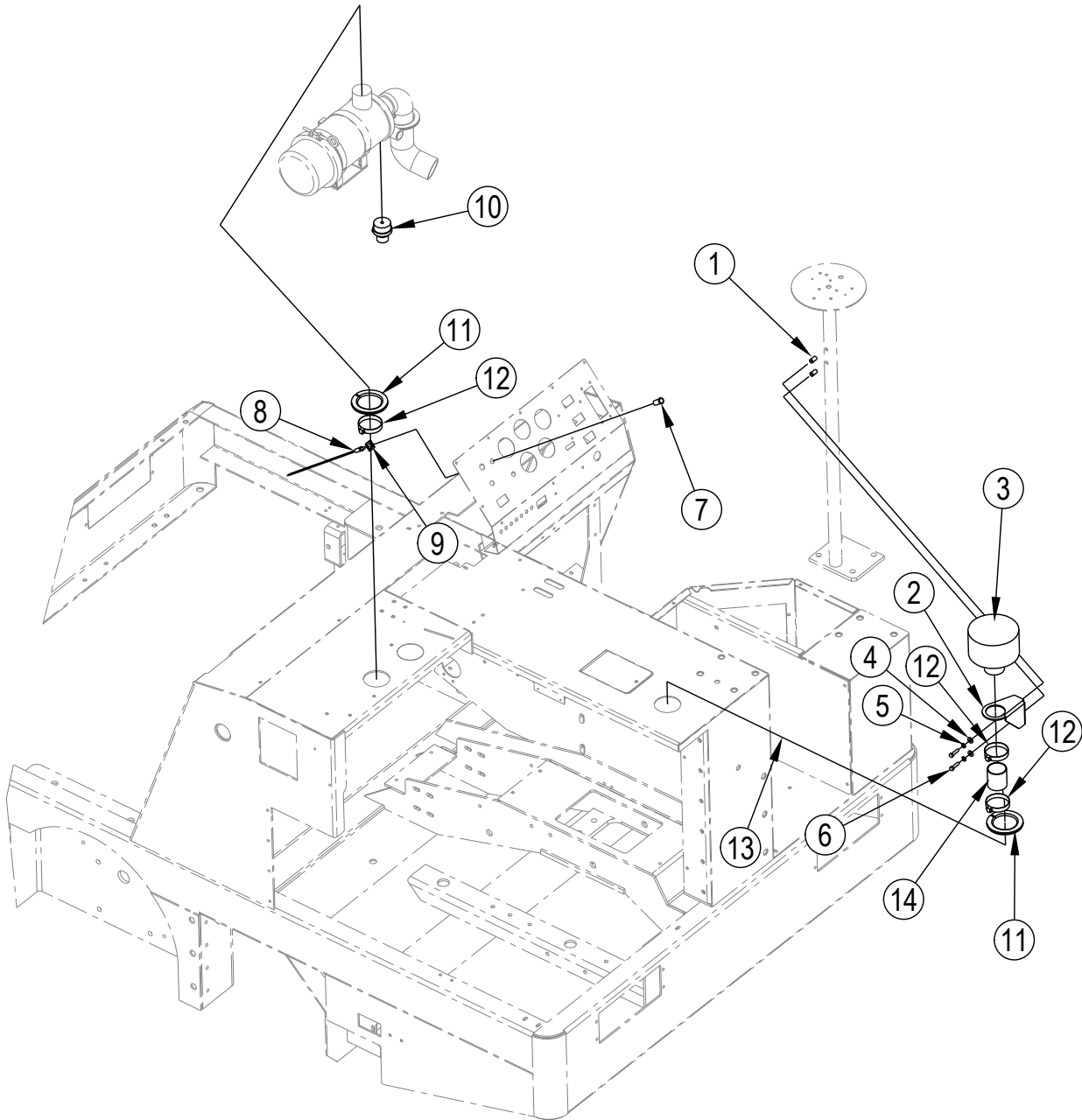
[] = Not Shown

= Revised or new since last update



5/09	SE AIR CLEANER OPTION [WITH OVERHEAD GUARD]		
8/13	Granterra		37

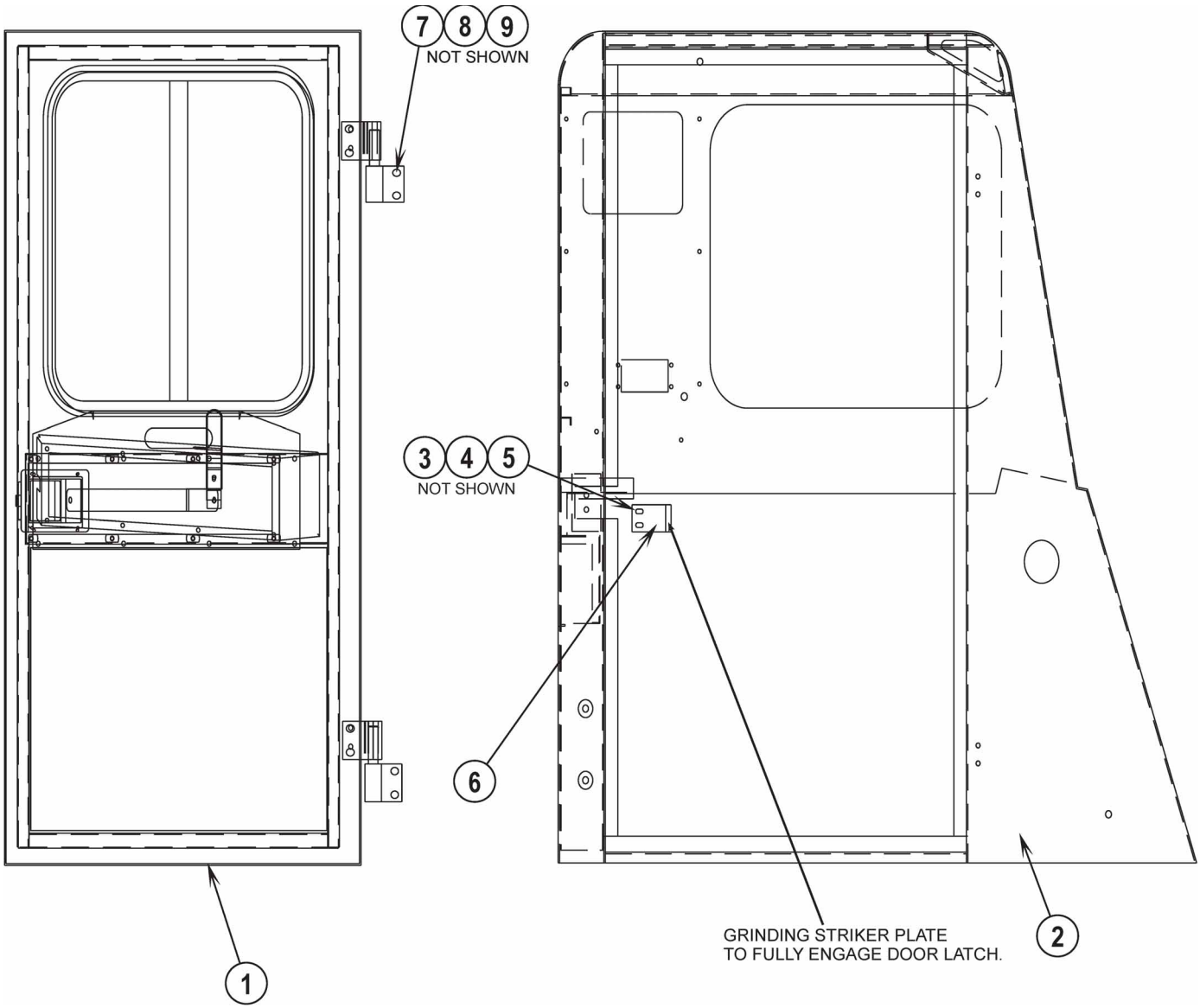
Item	Ref. No.	Qty	Description
	56516867	1	SE Air Cleaner W/Overhead Guard Option (Gasoline/LPG)
	56100840	1	SE Air Cleaner W/Overhead Guard Option (Diesel)
1	56516866	1	Bracket
2	7-24-04107	1	Filter, Pre-Cleaner
3	2-00-00205	2	Bolt, 1/4-20 Fin. Hex Head
4	2-00-03702	2	Washer, .625 x .281 x .063
6	56305660	1	Light, Red LED Indicator
9	7-82-00065	1	Switch, Dust Load Indicator (Gasoline/LPG only)
	56100842	1	Switch, Dust Load Indicator (Diesel only)
10	7-21-04022	2	Edging
11	2-00-00641	2	Nut, Fiber Insert 1/4-20
12	2-00-02216	3	Clamp, Hose
13	8-33-02114	1	Hose (10 ft.)
14	7-87-02203	1	Coupling
15	NA	1	Wire Assembly
[]	56383154	1	Decal-Air Filter



5/09	SE AIR CLEANER OPTION [WITH AMBER STROBE]		
11/12	Granterra		39

Item	Ref. No.	Qty	Description
	56516873	1	SE Air Cleaner W/O Overhead Guard Option (Gasoline/LPG)
	56100841	1	SE Air Cleaner W/O Overhead Guard Option (Diesel)
1	2-00-05261	2	Nutsert, 1/4-20
2	56516866	1	Bracket
3	7-24-04107	1	Filter, Pre-Cleaner
4	2-00-03702	2	Washer, .625 x .281 x .063
5	2-00-00518	2	Lock Washer, 1/4 Helical Spring
6	2-00-00205	2	Bolt, 1/4-20 Fin. Hex Head
7	7-41-03004-1	1	Red Lens (Diesel only)
	56305660	1	Light, Red LED Indicator (Gasoline/LPG only)
8	7-40-05027	1	Lamp/Socket Assembly (14V) (Diesel only)
9	2-00-04735	1	Clip, Spring(Diesel only)
10	7-82-00065	1	Switch, Dust Load Indicator (Gasoline/LPG only)
	56100842	1	Switch, 30" Load Indicator (Diesel only)
11	7-21-04022	2	Edging
12	2-00-02216	3	Clamp, Hose
13	8-33-02114	1	Hose (10 ft.)
14	7-87-02203	1	Coupling
[]	3-71-00302	1	Hose (Diesel only)
[]	56383154	1	Decal-Air Filter

[] = Not Shown



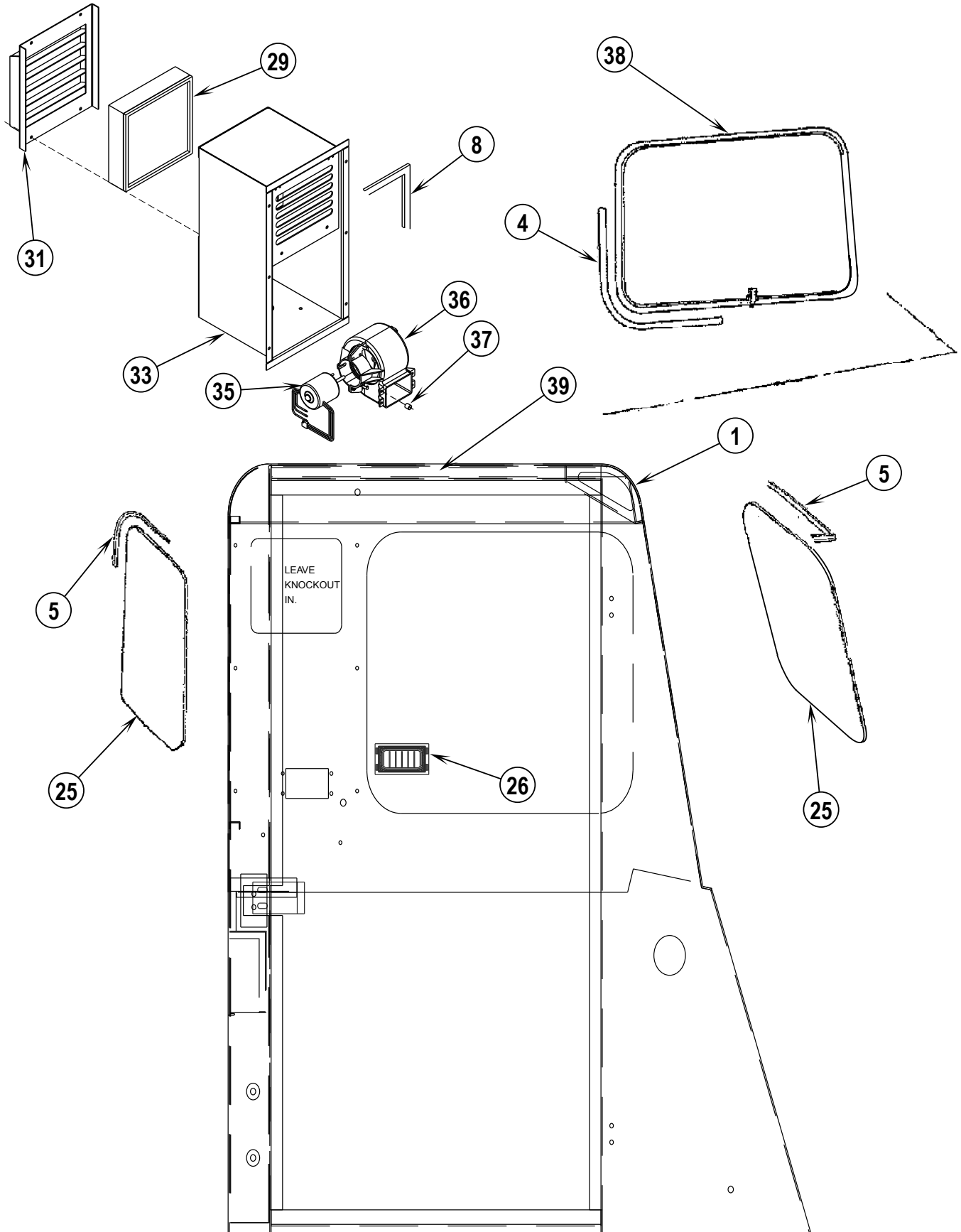
5/09

CAB ASSEMBLY

Granterra

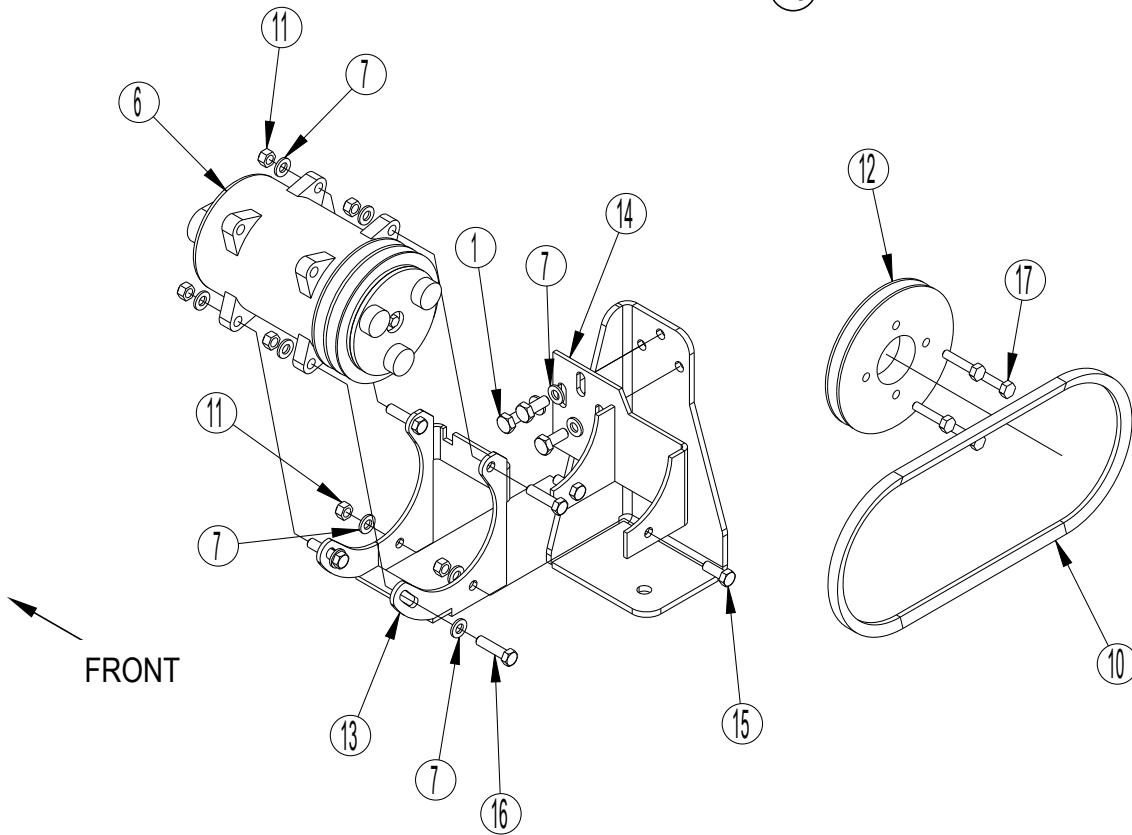
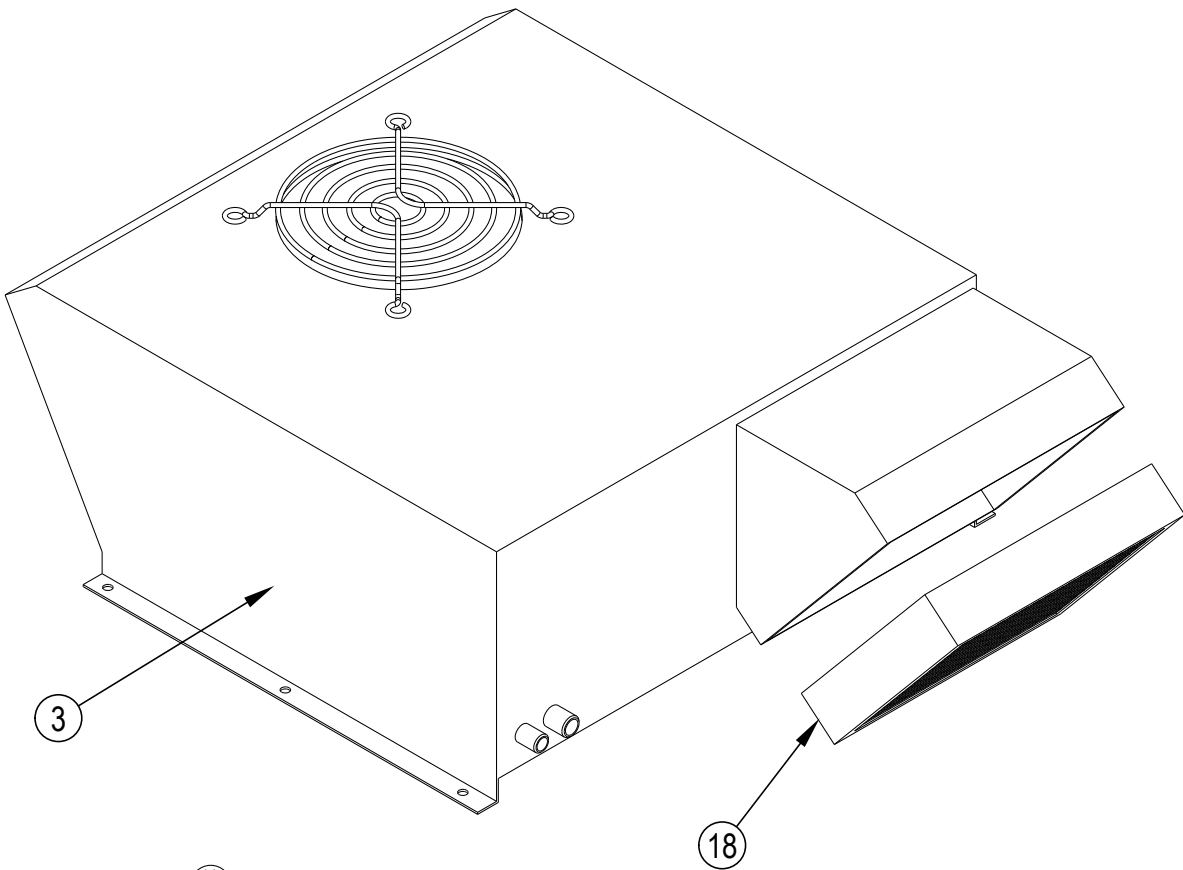
41

Item	Ref. No.	Qty	Description
	56516868	1	Cab Assembly
1	56516882	1	Door Assembly
2	56516887	1	Cab Weldment
3	2-00-00644	2	Nut-Ins-Fibre .31-18 Zn PL
4	2-00-00207	2	Scw-HHC .313-18 x 1.25 GR 5 ZN
5	2-00-00409	2	Wshr-Flat .688 x .344 x .063 St
6	8-45-05009	1	Lug-Striker
7	2-00-00208	4	Scw-HHC .313-18 x .75 GR5 ZN
8	2-00-00419	4	Wshr-Flat .625 x .328 x .031 Stl.
9	2-00-00646	4	Nut-Ins-Fibre .31-18 Thin/Zn



Item	Ref. No.	Qty	Description
	56516881	1	Cab Assembly W/Pressurizer
1	56516868	1	Cab Assembly
4	56516880	1	Seal Side Window (84")
5	56516879	2	Seal Window (88")
8	56516878	1	Gasket Blower Housing (71.66")
17	2-00-03041	4	Screw-Hshc .25-20 X 1.25
25	8-90-01005	2	Window-Rear
26	8-18-03025	1	Adj. Lower Vent Cover
29	8-24-04141	1	Filter - Pressurizer
31	56516891	1	Blower Housing Louver-Weldment
33	56516890	1	Blower Box Weldment
35	0882-055	1	Motor
36	8-23-00015	1	Blower Assy
37	56516889	4	Spacer
38	8-90-01006	1	Canopy Window- Cab
39	8-34-09026	1	Insulation- Cab Roof Interior
[]	56516888	1	Cover Console
[]	56508794	1	Switch 3-Speed
[]	56508778	1	Knob Control
[]	56508787	1	Decal Cab Blower
[]	8-18-00422	1	Decal - Control-Cb-11
[]	7-64-00022	1	Circuit Breaker - 20 Amp
[]	8-11-00044	1	Boot (for 7-64-00022)
[]	0895-117	1	Harness - Cab
[]	8-34-09036	1	Insulation-Cab Left Side Int.
67	56109406	1	Spacer Cab

[] = Not Shown



5/09

CAB AC OPTION - DIESEL

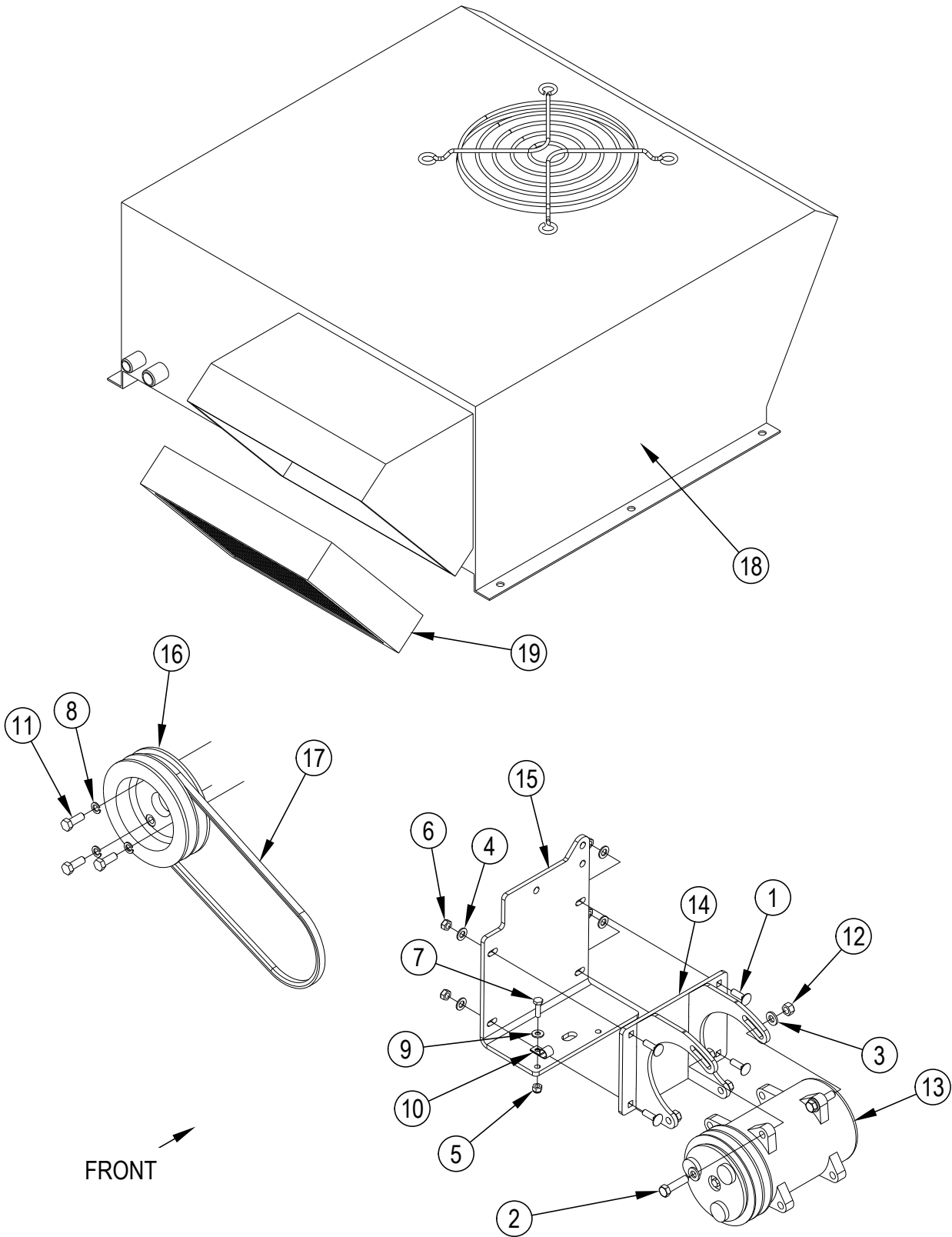
4/14

Granterra

45

Item	Ref. No.	Qty	Description
	0780-692	1	A/C Option-Diesel
1	56003019	3	SCR-HEX M10-1.25 X 25mm
[2]	56109175	1	Fuse Holder, In-Line Mini
3	56109242	1	Ac Assy/S4q2 (Large Dsl)
[4]	56109247	1	Harness, Ac
[5]	56109248	1	Fuse, Mini 30 Amp
6	0782-177	1	A/C Compressor, Dual Groove
7	2-00-00402	11	Washer, 25/64" Id X 3/4" Od
[8]	2-00-00828	1	Ring Terminal
[9]	2-00-03360	1	Conn-Butt Splice Insulated
10	2-00-06151	1	Belt-V #4I360
11	2-95-04182	6	Nut, Hex, Stop, 3/8-16
12	7-60-00206	1	Pulley-V Belt
13	8-08-00950	1	Bracket, A/C Compressor
14	8-08-00951	1	Bracket, A/C Compressor
15	2-00-00233	2	Bolt-Hex Head, Finished, 3/8-16 X 1.00
16	2-00-00234	4	Screw, 3/8-16 X 1-1/2 Hhc
17	2-00-06532	4	Hhc, M8 X 1.25 X 40mm
18	7-24-04108	1	Filter AC Panel

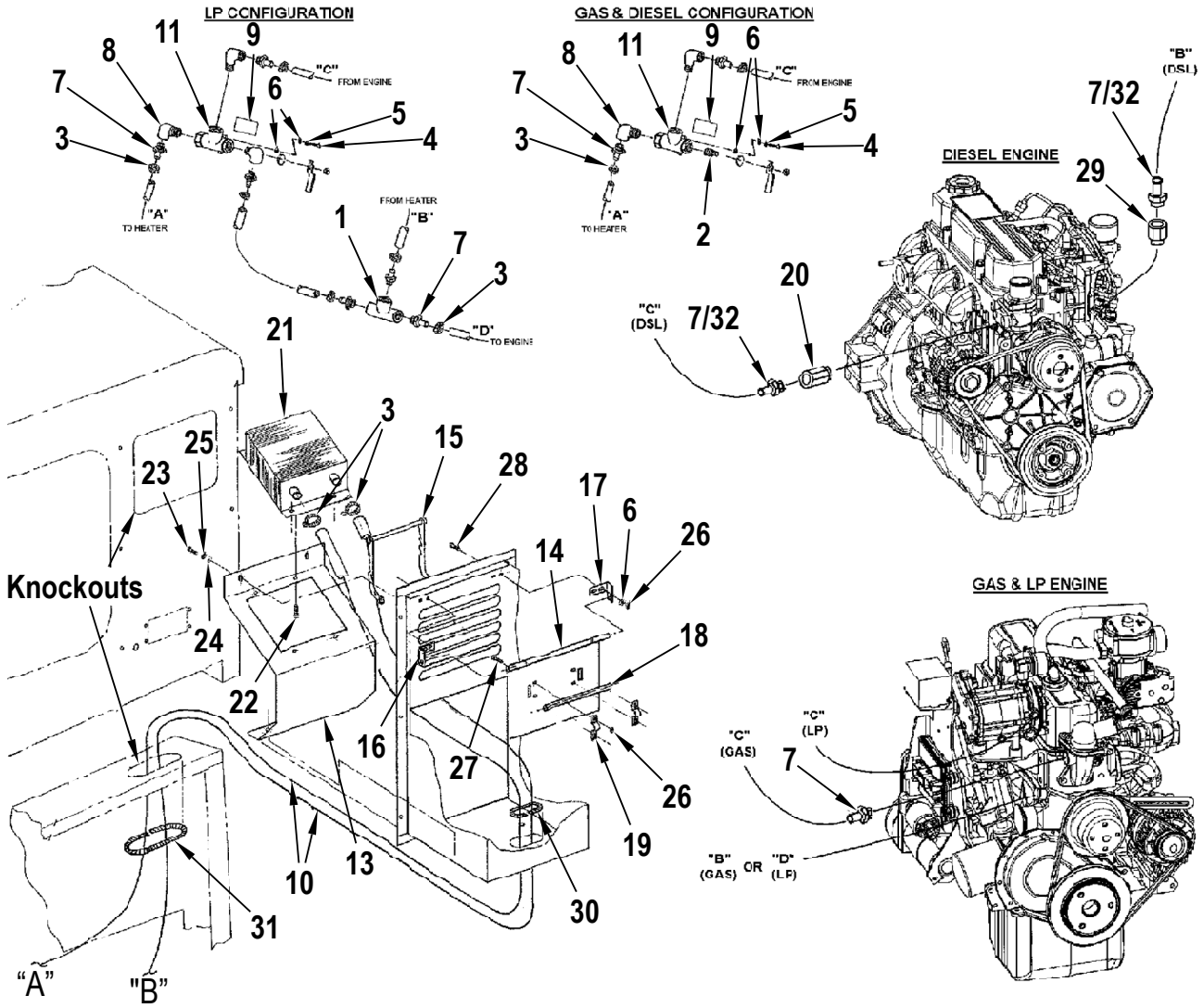
[] = Not Shown



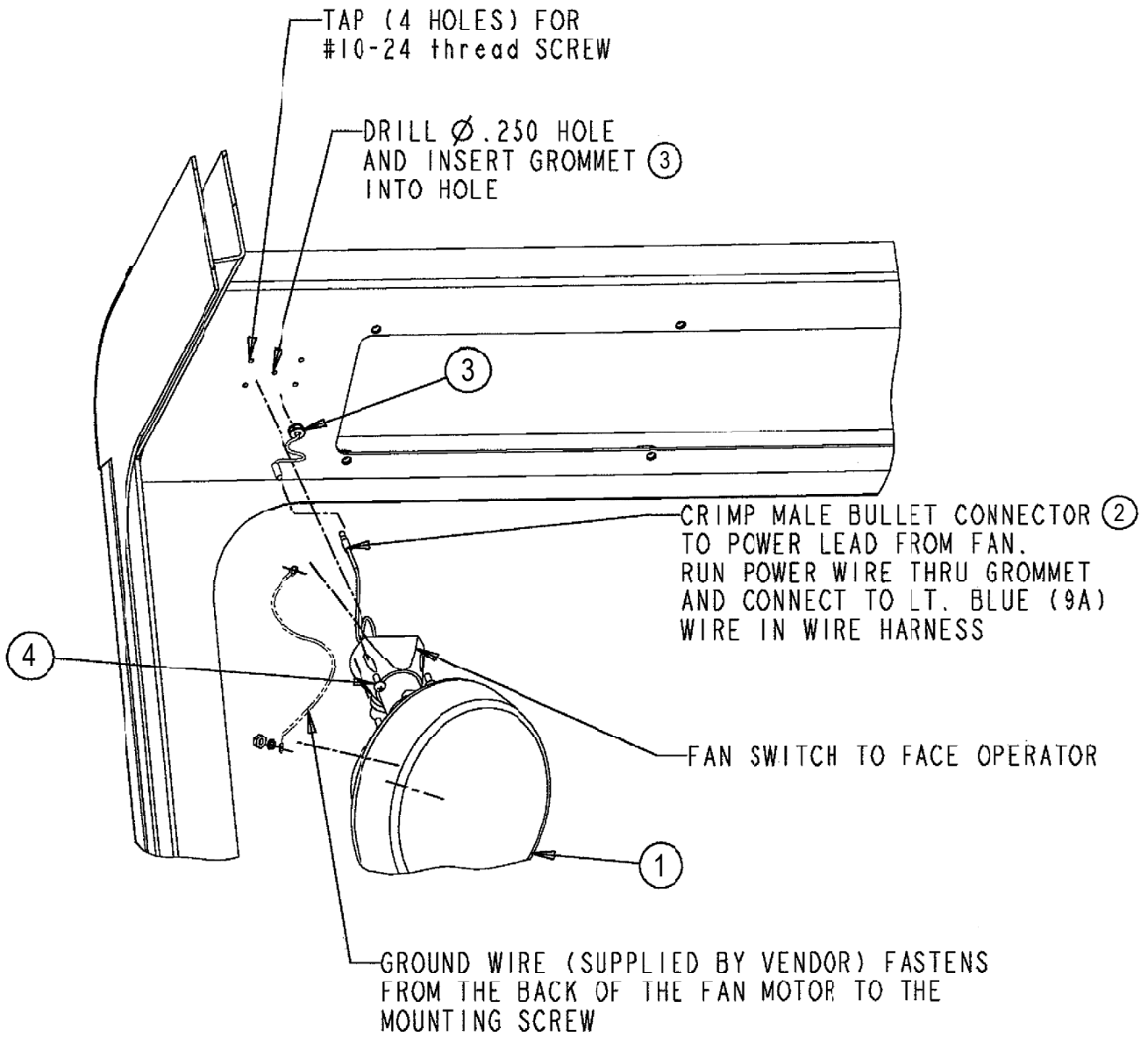
5/09	CAB AC OPTION - GM 3.0L		
4/14	Granterra		47

Item	Ref. No.	Qty	Description
	0880-762	1	A/C Option-GM 3.0L
1	2-00-00196	4	Bolt-Car, .31-18 X 1 Gr 5 Zn
2	2-00-00234	4	Screw, 3/8-16 X 1-1/2 Hhc
3	2-00-00402	8	Washer, 25/64" Id X 3/4" Od
4	2-00-00409	4	Flat Washer, .687 X .344 X .062
5	2-00-00641	1	Nut, Fiber Insert 1/4-20
6	2-00-00644	4	Nut, Hex, Insert Fiber, 5/16-18
7	2-00-01490	1	1/4-20 X 0.875", Hex Head Screw
8	2-00-02310	3	Washer-Lock, 3/8", Helical Spring
9	2-00-03702	1	Washer, .625 X .281 X .063
10	2-00-04602	1	Clamp
11	2-00-05381	3	Scr, Hhc .375-24x1.00 Gr 8 Zn
12	2-95-04182	4	Nut, Hex, Stop, 3/8-16
13	0782-177	1	A/C Compressor, Dual Groove
14	56109054	1	Bracket, A/C Compressor
15	56109057	1	Bracket, Engine Mount
16	56109058	1	Pulley, Dual Groove, 3.0l
17	56109059	1	V-Belt
18	56109243	1	Ac Assy/Gm 3.0l Engine
19	7-24-04108	1	Filter AC Panel
[]	2-00-00828	1	Term-Stakon T71 Type 1
[]	2-00-03360	2	Conn-Butt Splice Insulated
[]	56109175	1	Fuse Holder, In-Line Mini
[]	56109247	1	Harness, Ac
[]	56109248	1	Fuse, Mini 30amp

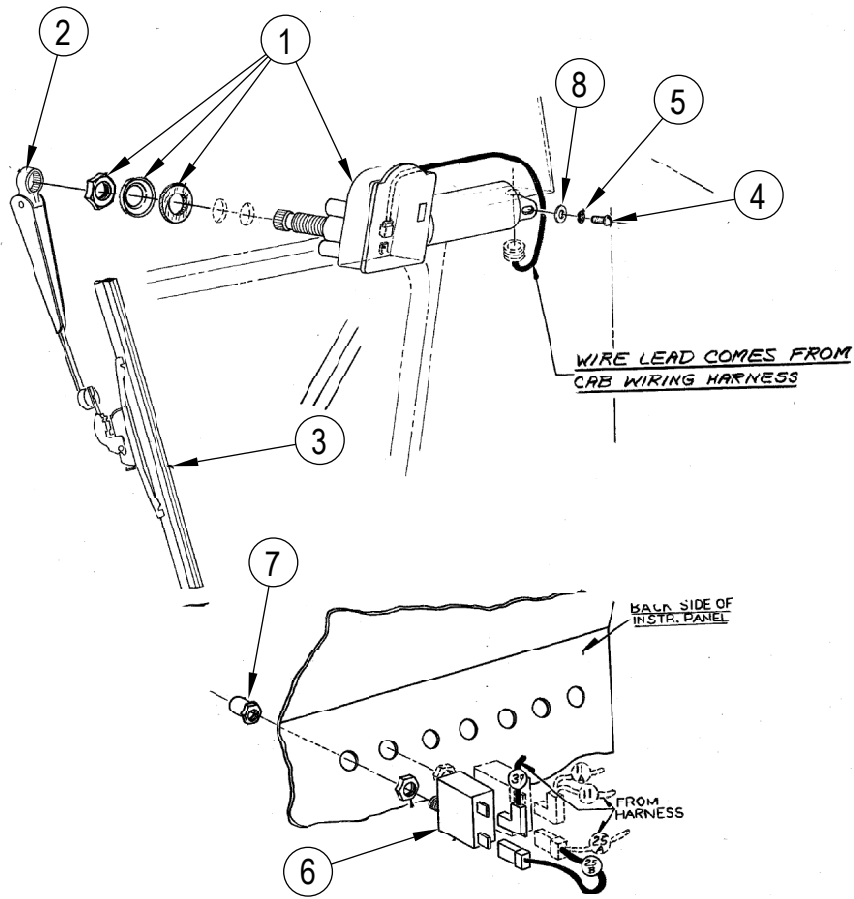
[] = Not Shown



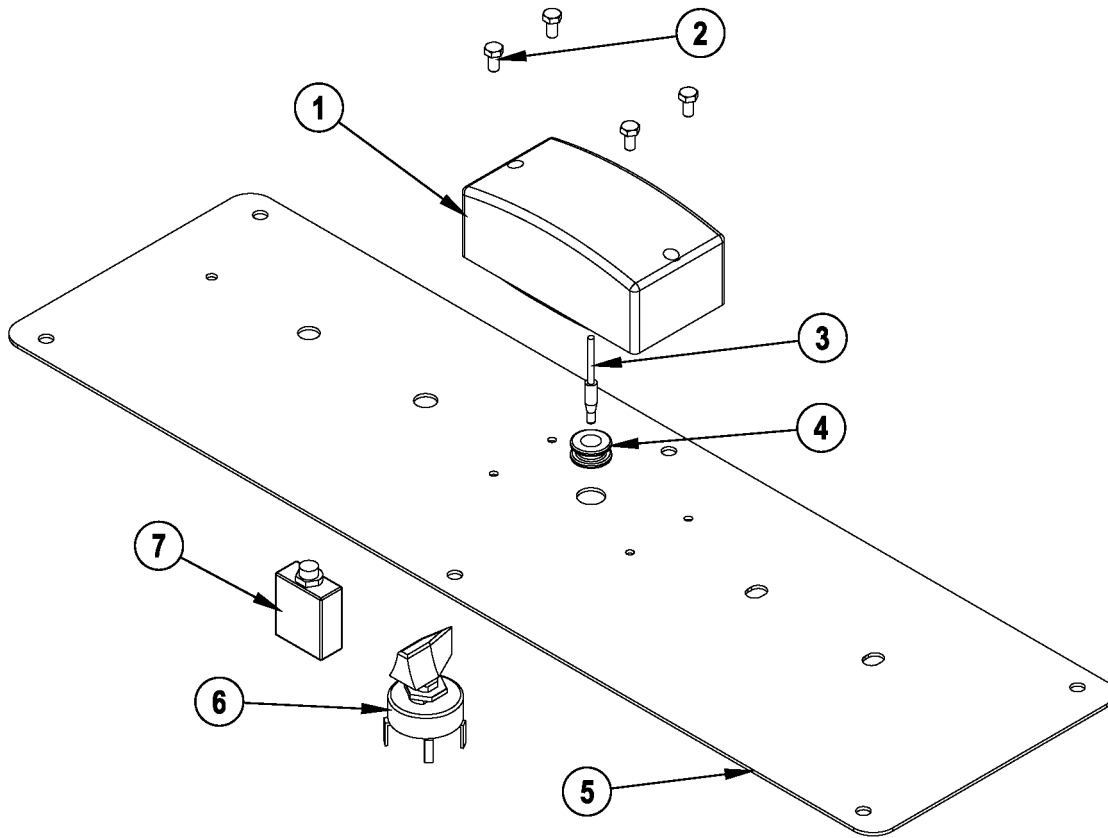
Item	Ref. No.	GAS Qty	LPG Qty	DSL Qty	Description
	56516902	1			Heater Option – Gasoline / Petrol
	56516901		1		Heater Option – LPG
	56516900			1	Heater Option – Diesel
1	2-00-04497	0	1	0	FTG-Tee
2	2-00-02474	1	0	1	Plug-Pipe-Galv .50
3	2-00-03407	6	10	6	Clamp-Witteck-10P
4	2-00-03059	2	2	2	SCW-PH THM #10-24 x .38 ZN
5	2-00-00519	2	2	2	LK Wash #10 Med Sec ZN
6	2-00-00426	8	8	8	WSHR-FL .500 x .219 x .063 STL ZN
7	7-25-02040	3	7	2	Hose Fitting
8	2-00-04328	2	3	2	Elbow-Street 90 Deg .50NPT
9	8-18-00331	1	1	1	Decal-Heater Valve
10	3-71-00125	25	25	25	5/8 ID Blck Heater Hose SAE20
11	8-88-00043	1	1	1	Heater Valve
13	56516897	1	1	1	Bracket-Heater
14	56516896	1	1	1	Blower Housing Door Weldment
15	56516895	1	1	1	Blower Housing Door Handle
16	56516894	1	1	1	Hinge (RH)
17	56516899	1	1	1	Hinge (LH)
18	8-55-08135	1	1	1	Cab Heater-Pivot Pin
19	8-13-07094	2	2	2	Conduit Clamp
20	56109081	0	0	1	Adapter M16 x 1.5-3/8NPT
21	8-62-01015	1	1	1	Heater Core
22	2-00-01994	4	4	4	SCR-TF/PRH #8-15 x .75 type A
23	2-00-00220	4	4	4	SCW-HHC .25-20 x .63 GR 8 ZN
24	2-00-03702	4	4	4	WSHR-FL .625 x .281 x .063 STL ZN
25	2-00-00518	4	4	4	LK WASH 1/4 Med Section ZN
26	2-00-01246	8	8	8	#10-24 Nylon Insert Thin
27	2-00-00006	4	4	4	SCREW-FHM #10-24 x .63 ZN
28	2-00-00049	4	4	4	SCW-RHM 10-24 x .50 ZN PL
29	56109082	0	0	1	Adapter 3/8BSPT – 3/8NPT
30	8-21-04015	1	1	1	Moulding-Rubber
31	8-21-04039	1	1	1	Edging-Engine Cover
32	2-00-05972	-	-	2	Hose Fitting – 90 Deg



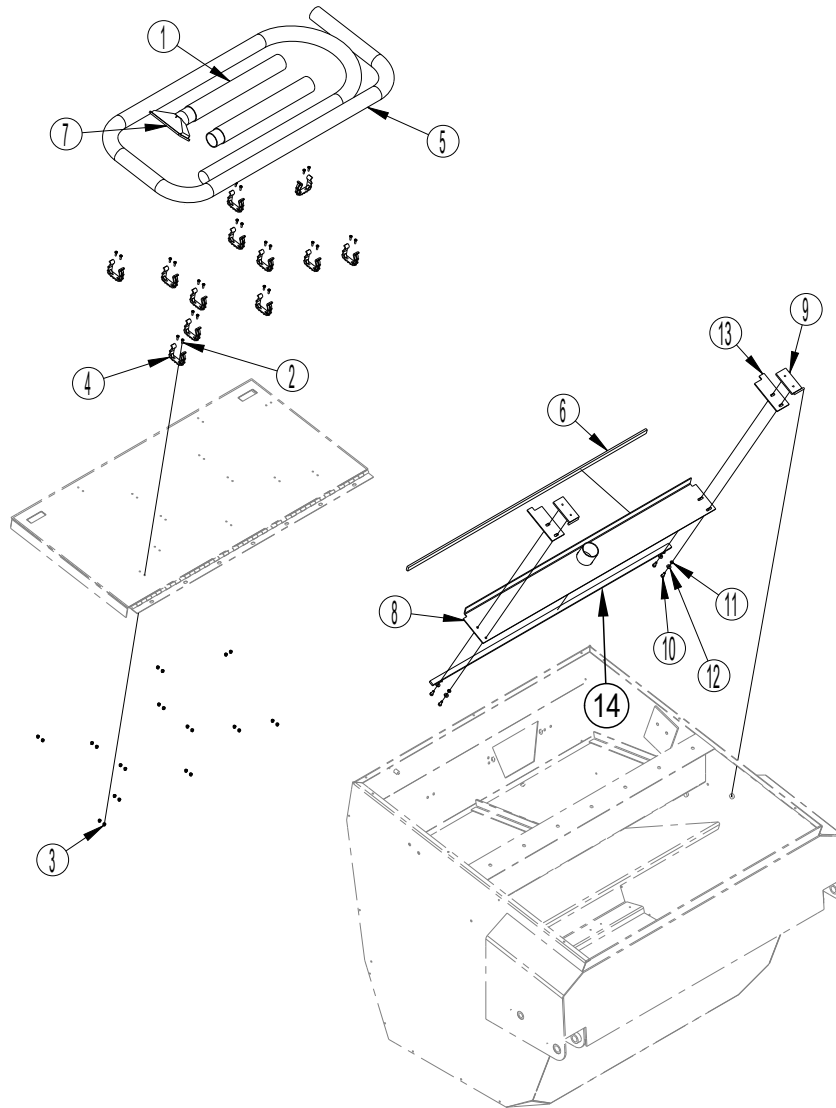
Item	Ref. No.	Qty	Description
	0880-615	1	Cab Fan Option
1	8-23-00016	1	Defroster Fan
2	2-00-04578	1	Connector (Male Bullet)
3	2-00-04200	1	Grommet
4	2-00-00049	1	Screw



Item	Ref. No.	Qty	Description
	0880-388	1	Cab Wiper Option
1	0882-067	1	Wiper Motor-Single Speed
2	8-03-04315	1	Wiper Arm
3	8-06-03004	1	Wiper Blade
4	2-00-00049	1	Screw-RHM 10-24 x .50
5	2-00-00519	1	Lockwasher-10-Split
6	8-64-00008	1	Circuit Breaker-15 Amp
7	8-11-00044	1	Boot
8	2-00-00426	1	Flat Washer-.50 x .218 x .06



Item	Ref. No.	Qty	Description
	0880-616	1	Cab Dome Light Option
1	56109264	1	Light-Interior-Dome
2	56009012	4	Scr-Hex Thd Form 10-24 x .38
3	2-00-04578	1	Terminal-Bullet Male
4	2-00-00491	1	Grommet
5	8-16-07364	1	Access Cover
6	7-82-00011	1	Switch-4 Position Rotary



Item	Ref. No.	Qty	Description
	56381780	1	Vac Wand Kit
1	8-89-00002	2	Wand Sectiontube, Vac Wand
2	56002124	24	Scr-Pan Phil 10-24 X .62
3	56002768	24	Nut, Hex Nyl Loc 10-24
4	56212236	12	Clamp, Plastic
5	56381811	1	Hose-Vac
6	56418831	1	Gasket-Seat Plate
7	8-86-08010	1	Tool- 6 In Utility
8	56516766	1	Plate Adapter Hand Wand 3300
9	56516768	2	Wildmt-Pivot
10	2-00-00221	4	Bolt-Hex Head, Finished, 1/4-20x3/4 Lg
11	2-00-00518	4	Washer,Lock,1/4" Helical Spring
12	2-00-03702	4	Washer, .625 X .281 X .063
13	8-25-08183	2	Flap-Vac Wand Option
14	8-29-00190	1	Gasket-Hinge To Hopper



Nilfisk-Advance Equipamentos de Limpeza Ltda.
Av. Dep. Emílio Carlos, 2.499 - Bairro do Limão - 02721-200
São Paulo - SP - Brasil
www.nilfisk-advance.ind.br
www.plataforma.ind.br
Tel.: (11) 3959-0300
Fax: (11) 3959-0306
©2014 Nilfisk-Advance, Inc.



14600 21st Avenue North
Plymouth, MN 55447-3408
www.advance-us.com
Phone: 800-989-2235
Fax: 800-989-6566
©2014 Nilfisk-Advance, Inc.

A Nilfisk-Advance Brand