



Electronic Service Manuals

This electronic document is provided as a service to our customers. We do not create the contents of the information contained in this document. Should you have detailed questions pertaining to the information contained in this document, you may contact Michco, or the manufacturer which provided the original information in this electronic deliverable. Michco's only part in this electronic deliverable was the electronic assembly process. By providing this manual on line we are not guaranteeing parts availability.

You may contact Michco through the following methods:

Phone (517) 484-9312 or (800) 331-3339

2011 N. High St. -- Lansing, Michigan -- 48906

Fax: (517) 484-9836

Email: CustServe@Michco.com

Web site: www.Michco.Com

Parts Web site: www.FloorMachineParts.Com

Order Parts on Line at:

www.FloorMachineParts.Com

Directly to Parts & Service:

By Email: **Shop@Michco.com**

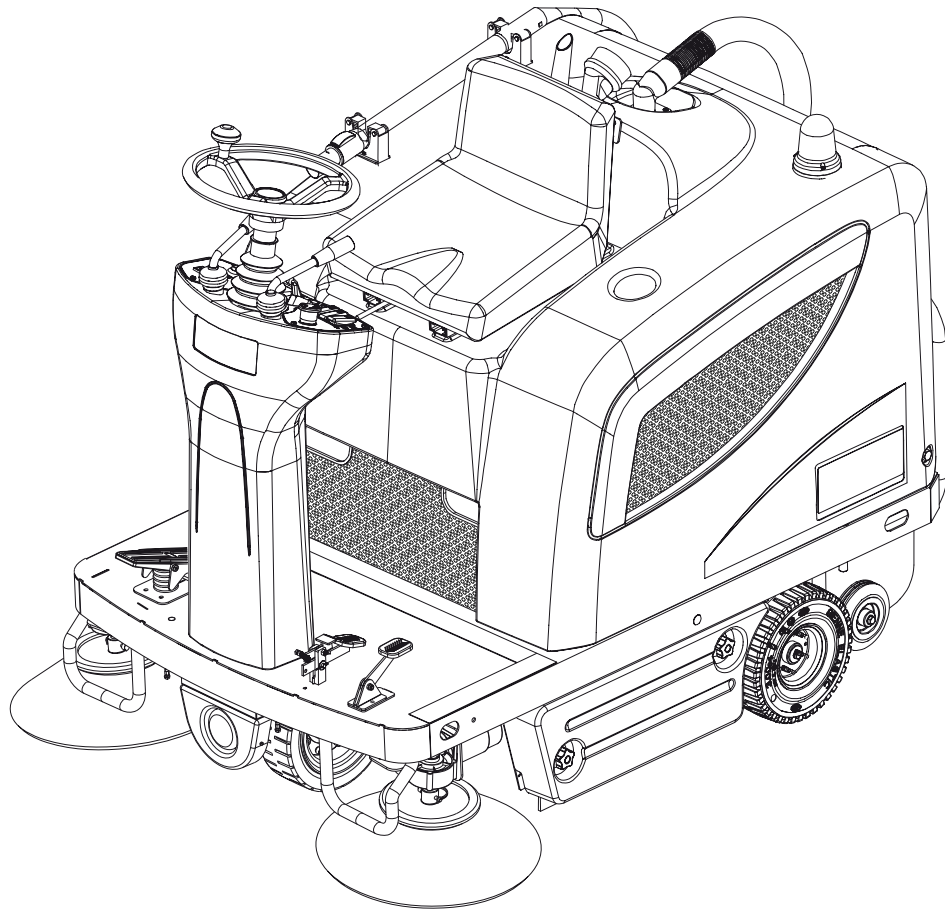
By Fax: (517) 702-2041

By Voice: Use numbers above.

Serving the Cleaning Industry Since 1922

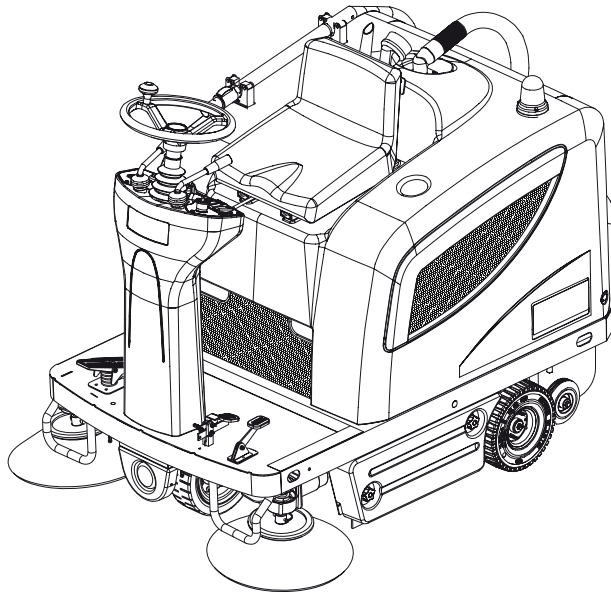
Notice: All copyrighted material remains property of original owners, all trademarks are property of respective owners. Manuals are subject to Manufacturer's reproduction limitations. Originals or reproductions were provided by manufacturers through a request. We make no warranty as to the correctness of information provided in this document and you assume all risk. By placing these manuals on line we are not declaring our corporation to be an manufacturer authorized dealer or provider, please check our web site for authorized manufacturers we represent.

Terra™ 4300 B



PARTS LIST

Advance model: 9084317010



DESCRIPTION

PLAN

GENERAL VIEW	2 - 3
CHASSIS ASSEMBLY	4 - 7
BONNET SYSTEM	8 - 9
MAIN BROOM ASSEMBLY	10 - 11
RIGHT SIDE BROOM ASSEMBLY	12 - 13
LEFT SIDE BROOM ASSEMBLY	14 - 15
STEERING SYSTEM	16 - 17
FRONT WHEEL ASSEMBLY	18 - 19
PEDAL ASSEMBLIES	20 - 23
CONTROL PANEL ASSEMBLIES	24 - 25
DRIVE SYSTEM	26 - 27
DUST CONTROL SYSTEM	28 - 29
WASTE CONTAINER ASSEMBLY	30 - 31
ELECTRICAL COMPONENTS	32 - 35
BATTERY CHARGER ASSEMBLY	36 - 37
ACCESSORIES	38 - 43
WIRING DIAGRAM	44 - 45
RECOMMENDED SPARE PARTS	46 - 47

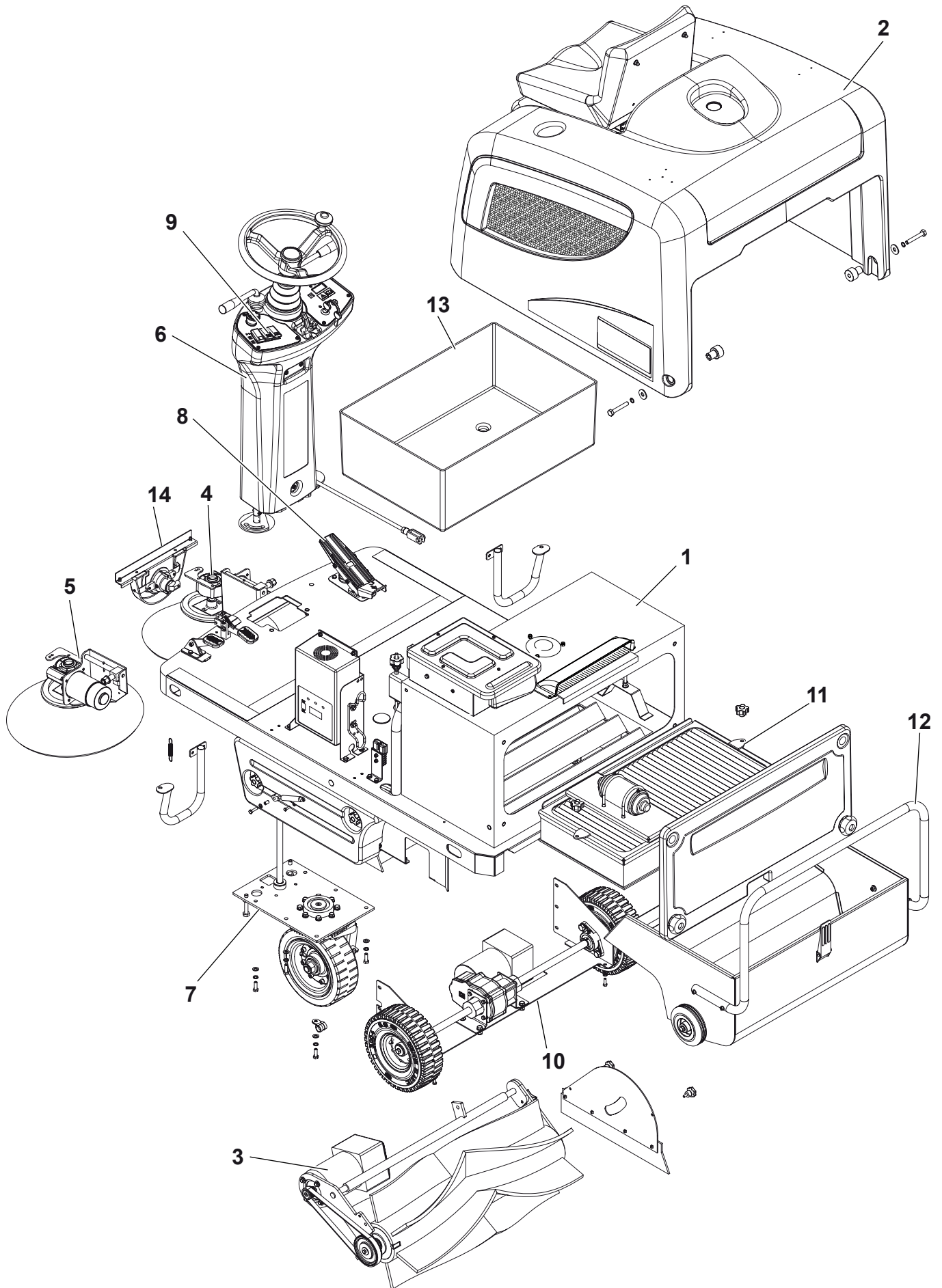
WHEN ORDERING PARTS

- * Use the 8, 9 or 10 digit numbers from the "Ref. No." columns in this parts list.
- * Specify the model and serial number of the machine.
- * Use the space below to record the model and serial number for future reference.

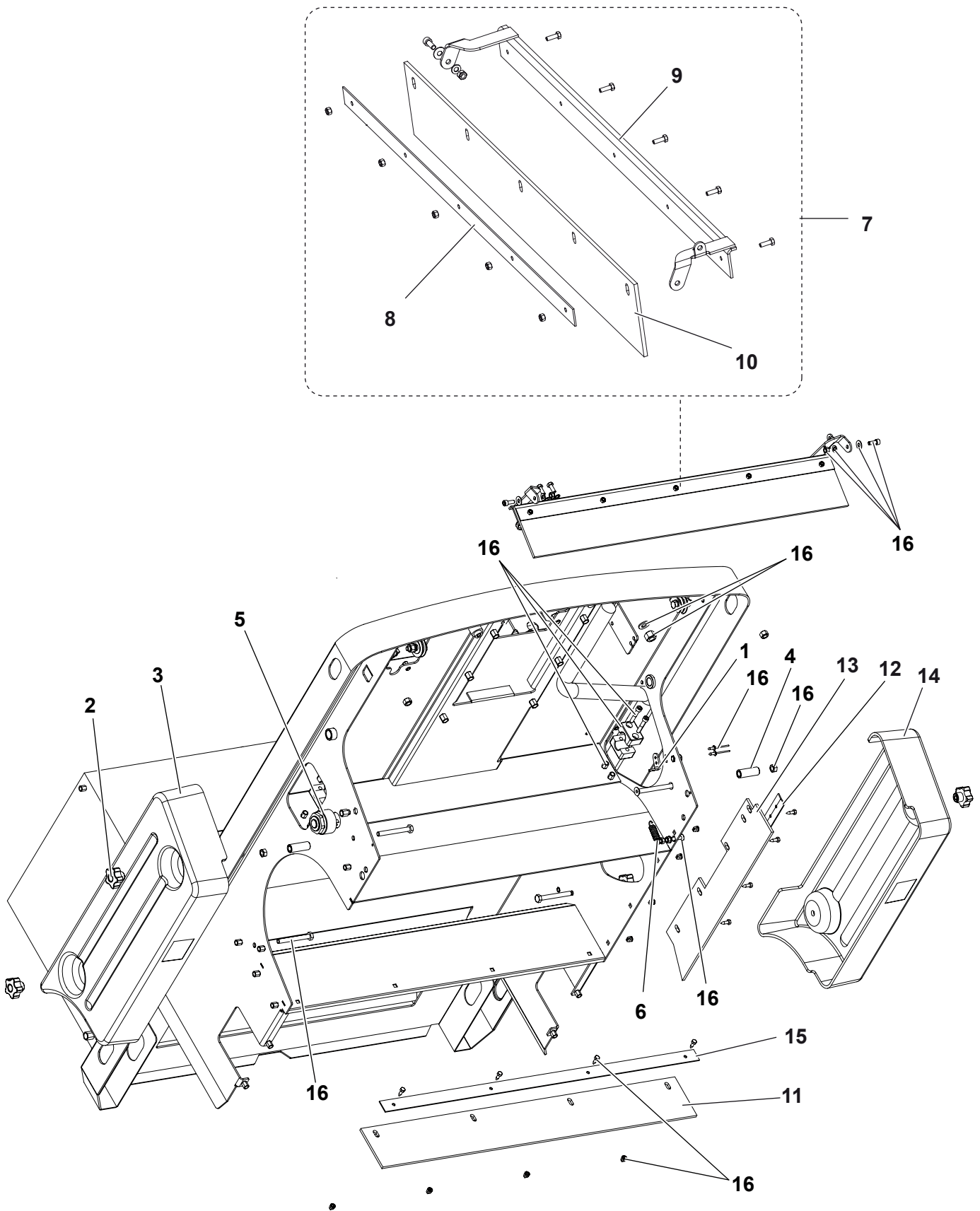
Model _____ Serial No. _____

*** = Optional**

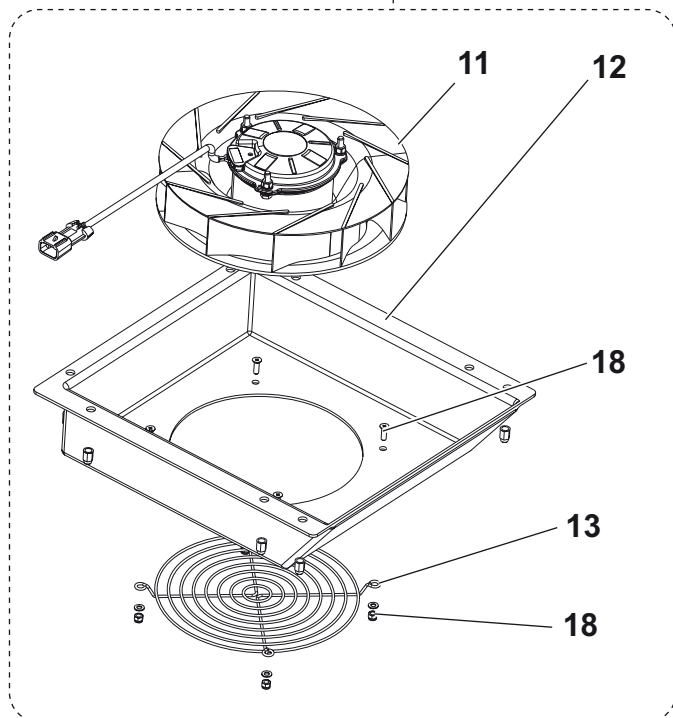
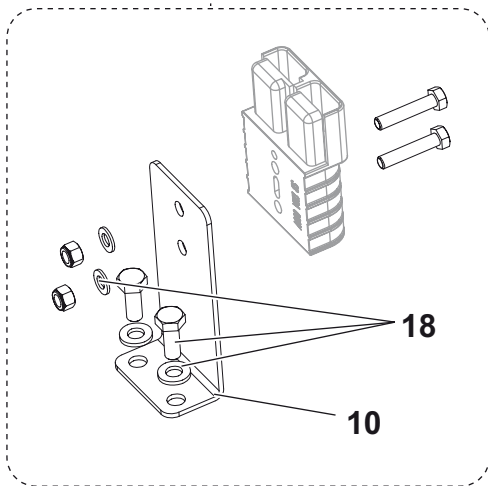
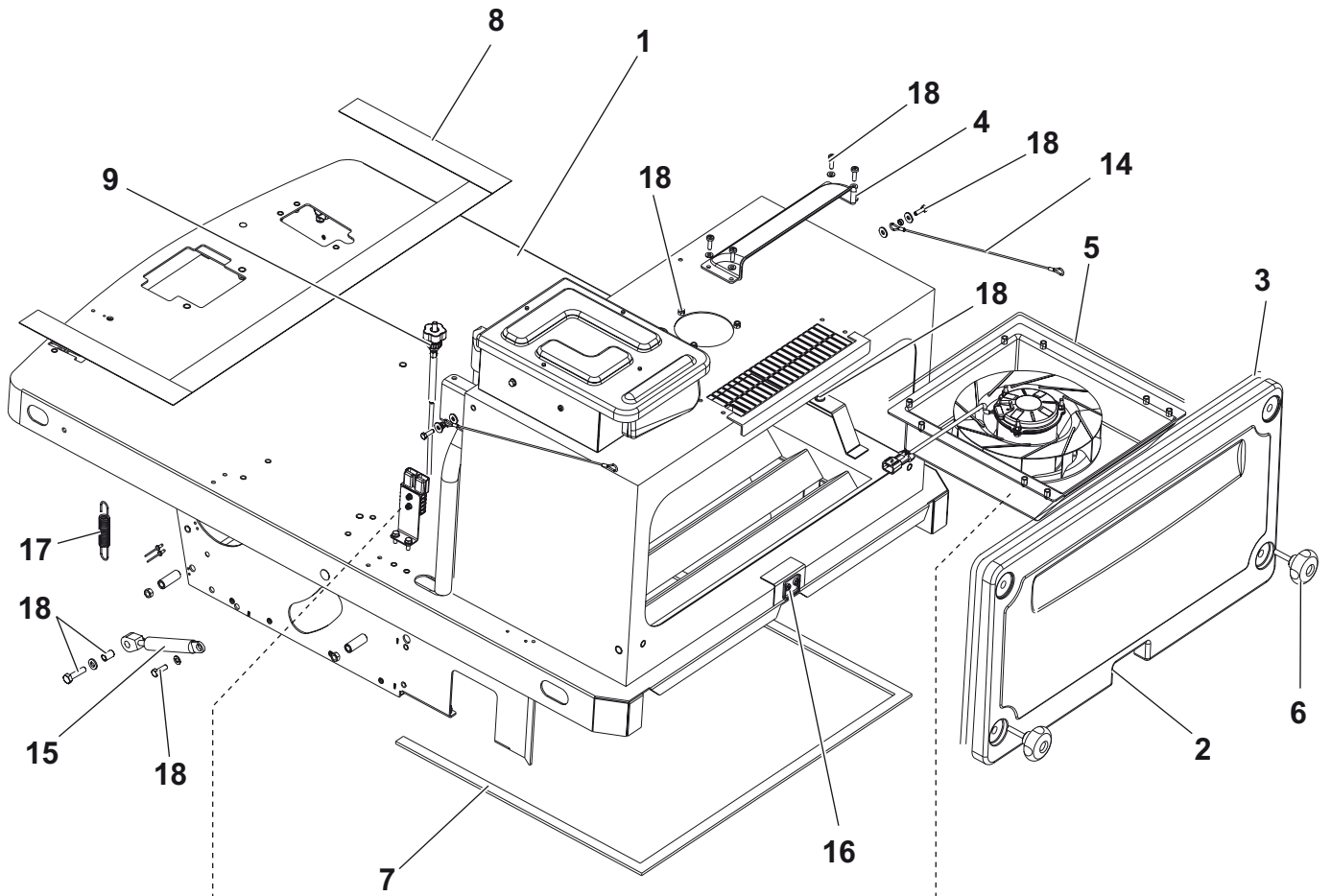
= Modified item No. or New item No.



Item	Ref. No.	Qty	Description
1		1	CHASSIS ASSEMBLY
2		1	BONNET SYSTEM
3		1	MAIN BROOM ASSEMBLY
4		1	RIGHT SIDE BROOM ASSY
5		1	LEFT SIDE BROOM ASSY
6		1	STEERING SYSTEM
7		1	FRONT WHEEL ASSEMBLY
8		1	PEDAL ASSEMBLIES
9		1	CONTROL PANELS SYSTEM
10		1	DRIVE SYSTEM
11		1	FILTER ASSEMBLY
12		1	WASTE CONTAINER ASSY
13		1	ELECTRICAL COMPONENTS
14		1	ACCESSORIES



Item	Ref. No.	Qty	Description
1	145 5126 000	1	BRACKET
2	146 1851 000	4	KNOB M8
3	146 2210 000	1	HATCH RIGHT
4	146 2426 000	4	SPACER 9X15X42.2
5	146 2487 000	1	BUZZER
6	145 9579 000	1	SPRING
7	1464098000	1	SKIRT RAISING DEVICE KIT (8-9-10)
8	145 1970 000	1	FRONT SKIRT PLATE
9	1464061000	1	SKIRT RAISING DEVICE
10	1464062000	1	FRONT SKIRT
11	145 1971 000	1	REAR SKIRT
12	145 5929 000	1	PIATTINA FLAP LATERALE
13	145 5927 000	1	FLAP LATERALE
14	146 2209 000	1	HATCH LEFT
15	145 1972 000	1	REAR SKIRT PLATE
16	1464097000	1	CHASSIS LOWER HARDWARE KIT
[17]*	146 2744 000	1	KIT NON MARKING SKIRTS



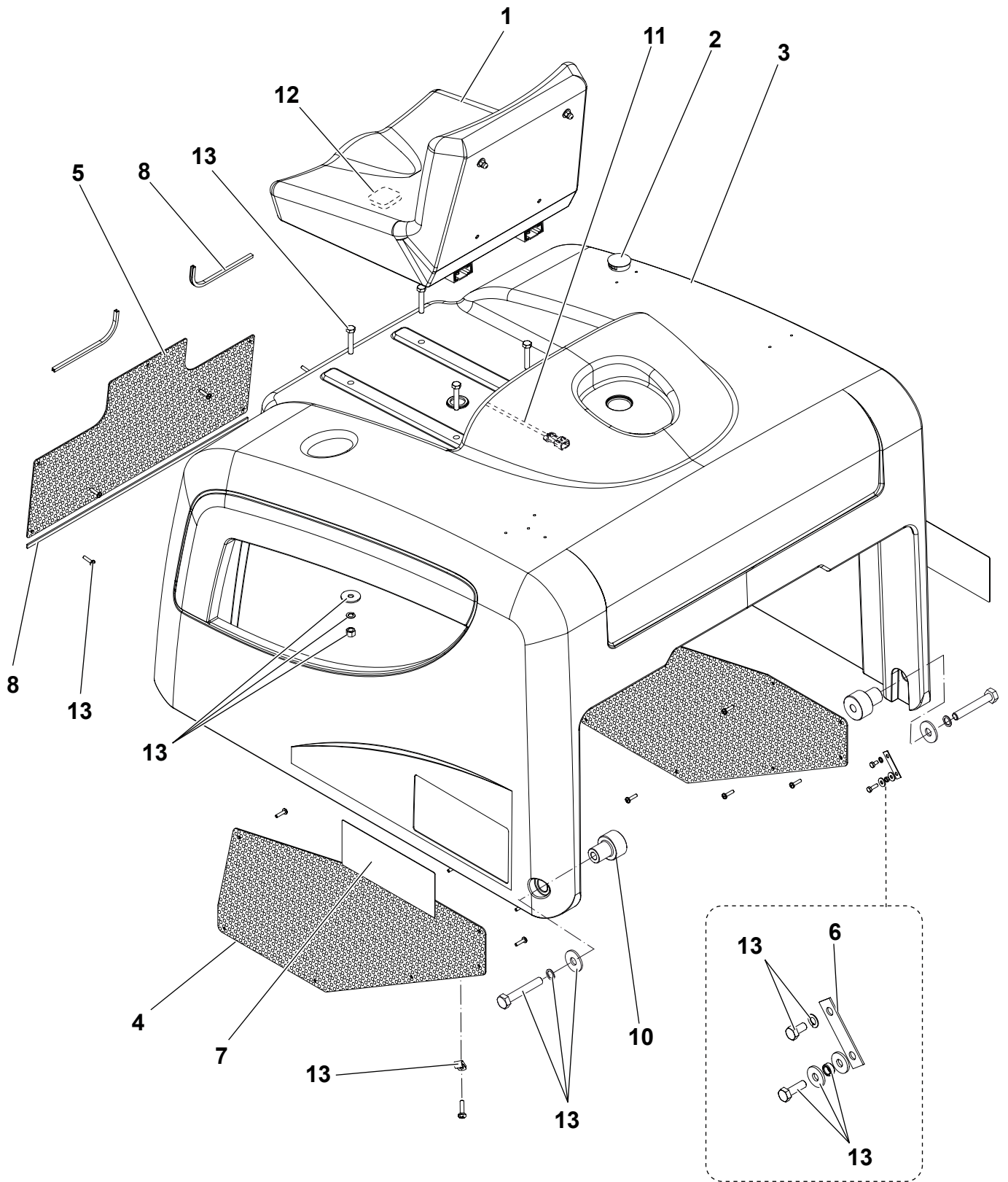
2009-06

CHASSIS ASSEMBLY

Terra™ 4300 B

7

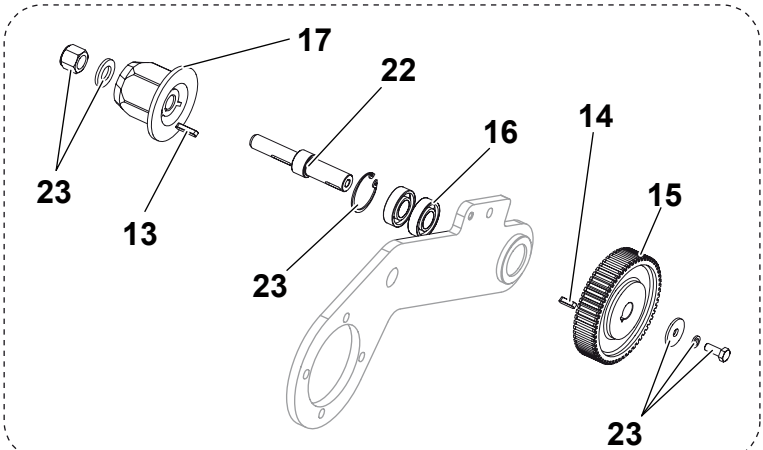
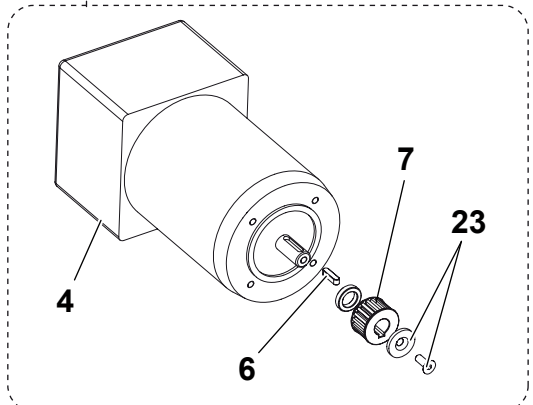
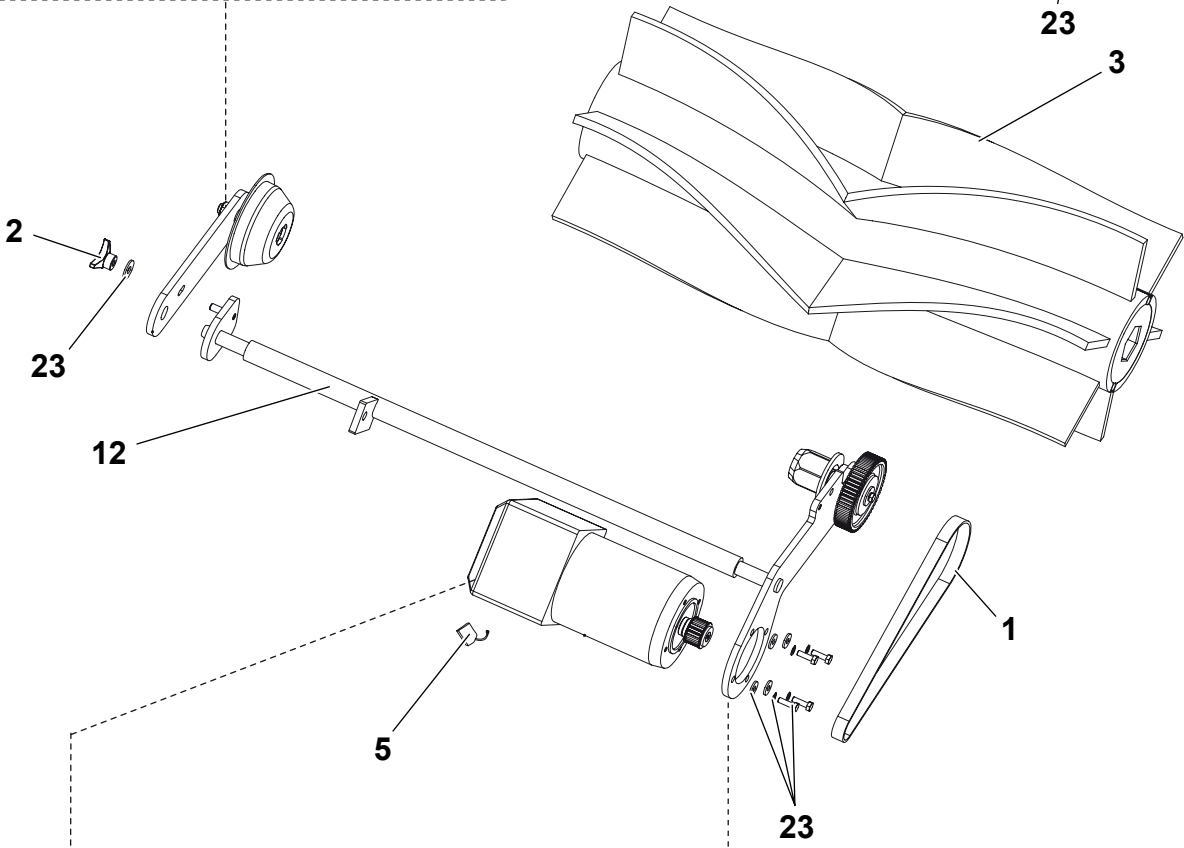
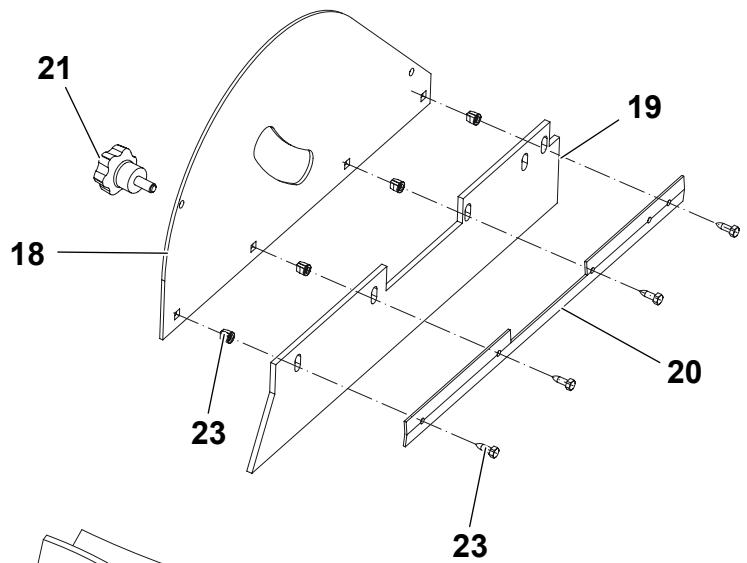
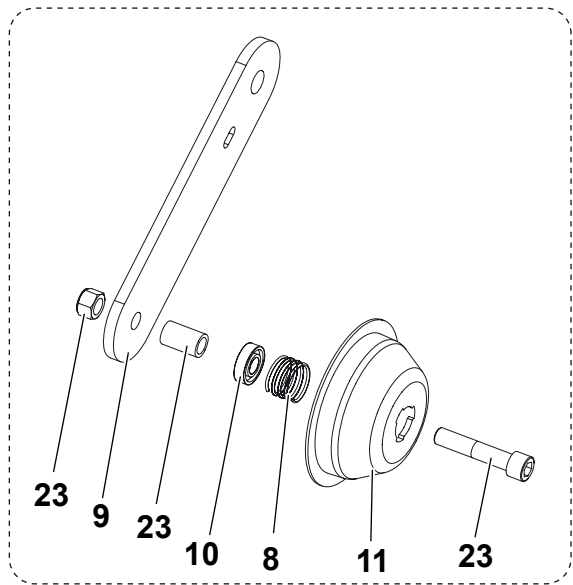
Item	Ref. No.	Qty	Description
1	1463946000	1	CHASSIS
2	146 2211 000	1	HATCH FILTER CLOSURE
3	146 0630 000	1	GASKET L=1850 MM
4	1463218000	1	CONVEYOR
5	1463173000	4	GASKET
6	146 2427 000	2	KNOB M8X40
7	1463977000	1	KIT WASTE CONT. GASKET
8	146 2798 000	1	KIT ANTISLIP
9	1463959000	1	CABLE MAIN BROOM
10	146 2384 000	1	BRACKET
11	1463146000	1	ELECTROFAN
12	1463217000	1	CONVEYOR
13	1463182000	1	GRATING
14	L08812362	2	CABLE
15	1463147000	1	GAS SPRING 30 KG
16	145 9333 000	1	PLATE
17	145 9184 000	2	SPRING
18	1464099000	1	CHASSIS UPPER HARDWARE KIT



Item	Ref. No.	Qty	Description
1	145 1782 000	1	SEAT W/MICROSWITCH
1*	146 2900 000	1	SEAT W/ SAFETY BELTS
2	145 9835 000	1	CAP Ø38.1
3	146 2208 000	1	SEAT HOLDER BONNET
4	146 2421 000	2	GRATE SIDE
5	146 2422 000	1	GRATE FRONT
6	146 2424 000	2	PLATE CABLE FIXING
7	1464211000	1	KIT DECALS TERRA™ 4300 B
8	146 2801 000	1	KIT BONNET GASKETS
9	146 2803 000	1	GASKET L=500 MM
10	146 2423 000	2	PIN
11	146 2488 000	1	HARNESS BONNET
12	146 0336 000	1	MICROSWITCH
13	146 2847 000	1	BONNET SYSTEM HARDWARE KIT

10

Terra™ 4300 B



Item	Ref. No.	Qty	Description
1	145 1851 000	1	BELT
2	145 5035 000	1	KNOB M8
3	145 4879 000	1	MAIN BROOM 300X700 STD
3*	145 4957 000	1	MAIN BROOM STEEL MIX
3*	145 6080 000	1	MAIN BROOM NAT.FIBRE
4	146 2792 000	1	KIT MAIN BROOM MOTOR
5	145 8360 000	4	CARBON BRUSHES
6	145 9774 000	1	KEY 5X5X20
7	145 1849 000	1	PULLEY HTD 20 5M 15 6F
8	145 0271 000	1	SPRING
9	145 1845 000	1	LEVER MAIN BROOM
10	145 0270 000	1	BALL BEARING 6001-2RS
11	145 0269 000	1	HUB
12	146 2464 000	1	MAIN BROOM SHAFT
13	145 8197 000	1	KEY 4X4X20
14	146 1489 000	1	KEY 4X4X15
15	145 1850 000	1	PULLEY HTD 60 5M 15 6W
16	145 8196 000	2	BALL BEARING 6002 2RS
17	1463877000	1	MAIN BROOM HUB
18	145 1827 000	1	HATCH MAIN BROOM
19	145 5927 000	1	SIDE SKIRT
20	145 5929 000	1	SIDE SKIRT PLATE
21	145 2244 000	2	KNOB M6X15
22	145 1791 000	1	MAIN BROOM PIN
23	146 2848 000	1	MAIN BROOM HARDWARE KIT
[24]*	1464101000	1	KIT CARPET
[25]	1464103000	1	INSTALLATION INSTRUCTION

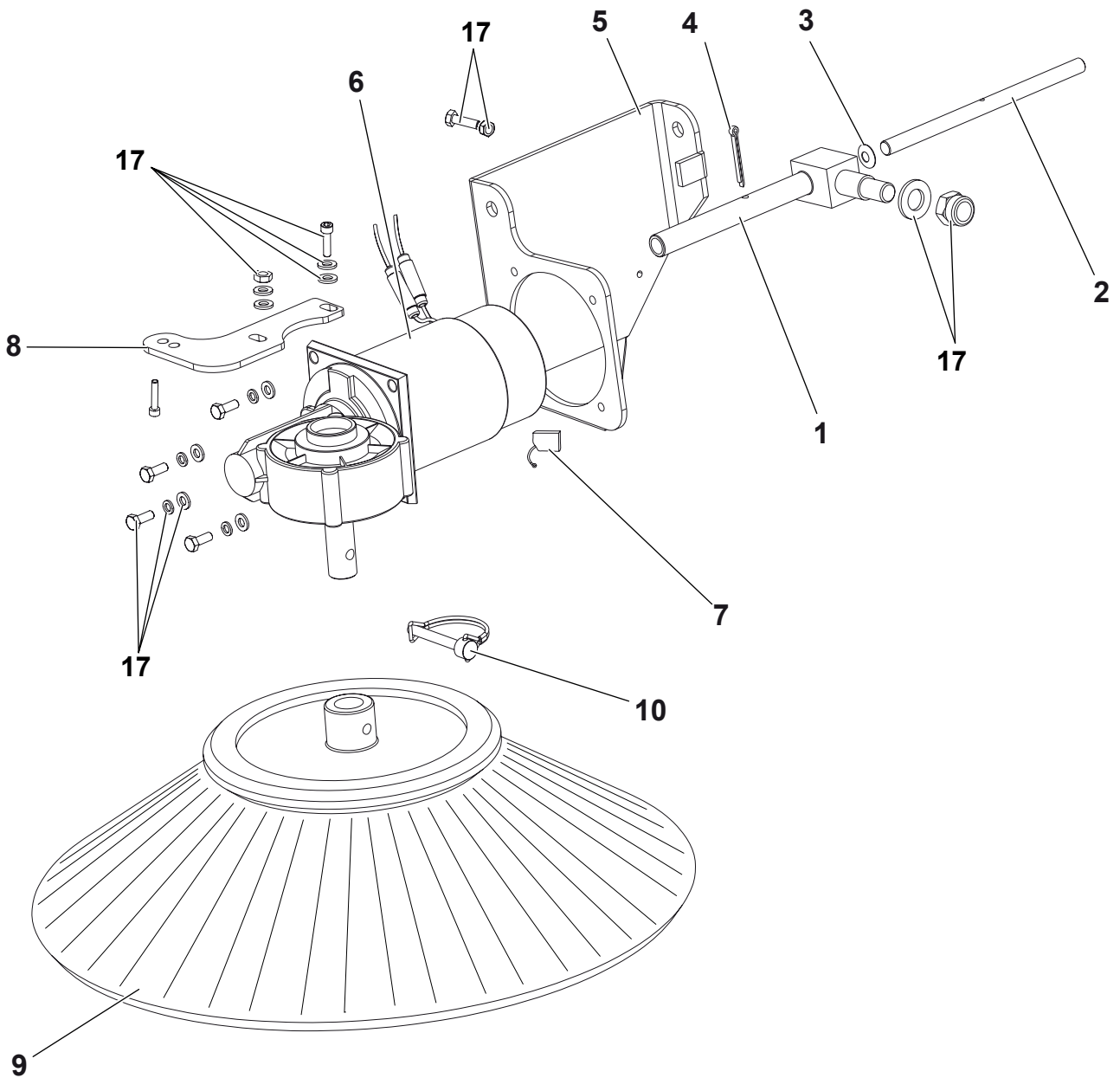
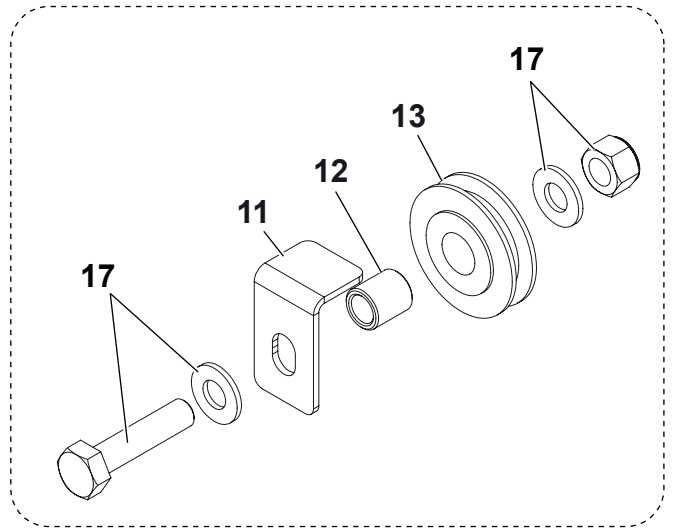
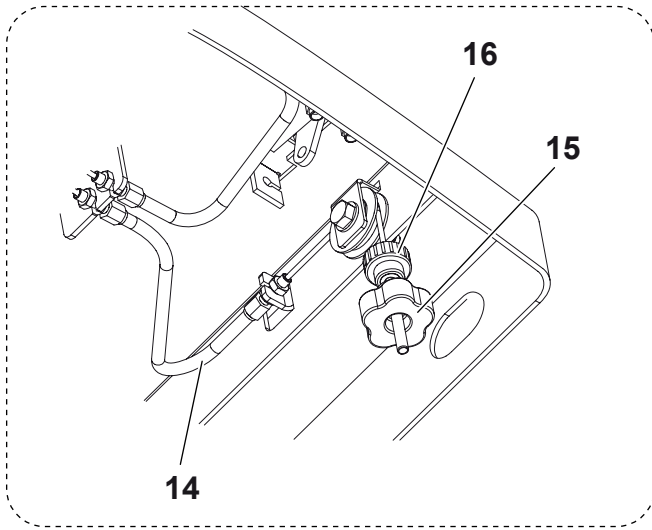
Item	Ref. No.	Qty	Description
1	145 1792 000	1	PIN SIDE BROOM
2	145 1951 000	1	PIN SIDE BROOM
3	145 2644 000	1	SPRING 6.2X15X0.5
4	145 9624 000	1	SPLIT PIN 3X20
5	1463150000	1	SUPP. RIGHT SIDE BROOM
6	1463953000	1	REDUCTION MOTOR 60W
7	145 5125 000	2	CARBON BRUSH
8	1463160000	1	FLANGE
9	1463969000	1	SIDE BROOM NAT.FIBRE
9*	1463952000	1	SIDE BROOM STEEL MIX
10	1463960000	1	CLIP WITH PIN
11	1463957000	1	BRACKET CABLE FIXING
12	909 5312 000	1	SPACER 8.2X12X13.5
13	145 2612 000	1	PULLEY
14	146 2475 000	1	CABLE RIGHT SIDE BROOM
15	146 2470 000	1	KNOB M6
16	146 2471 000	1	HANDWHEEL
17	1464100000	1	SIDE BROOM HARDWARE KIT

LEFT SIDE BROOM ASSY

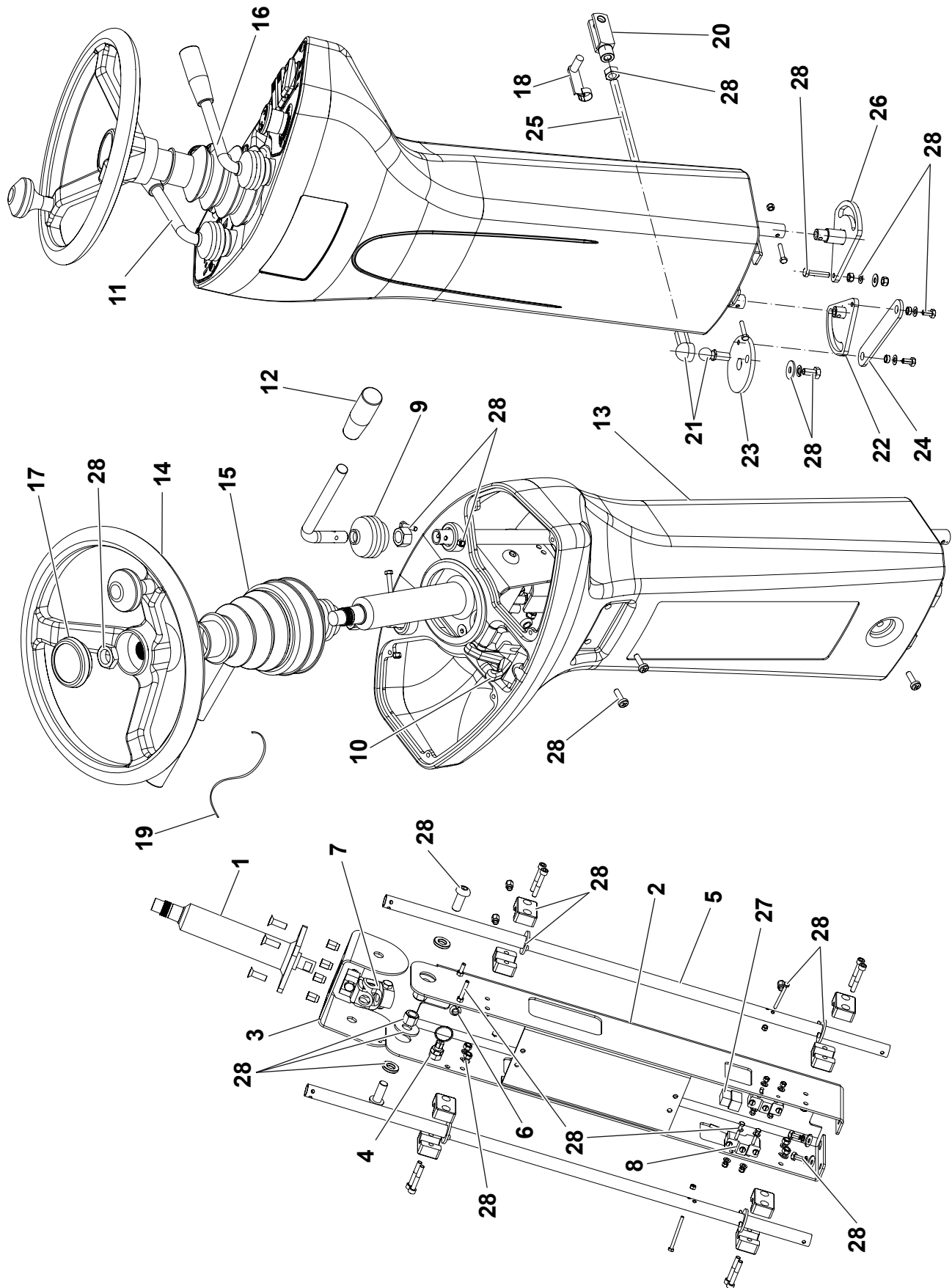
2009-06

14

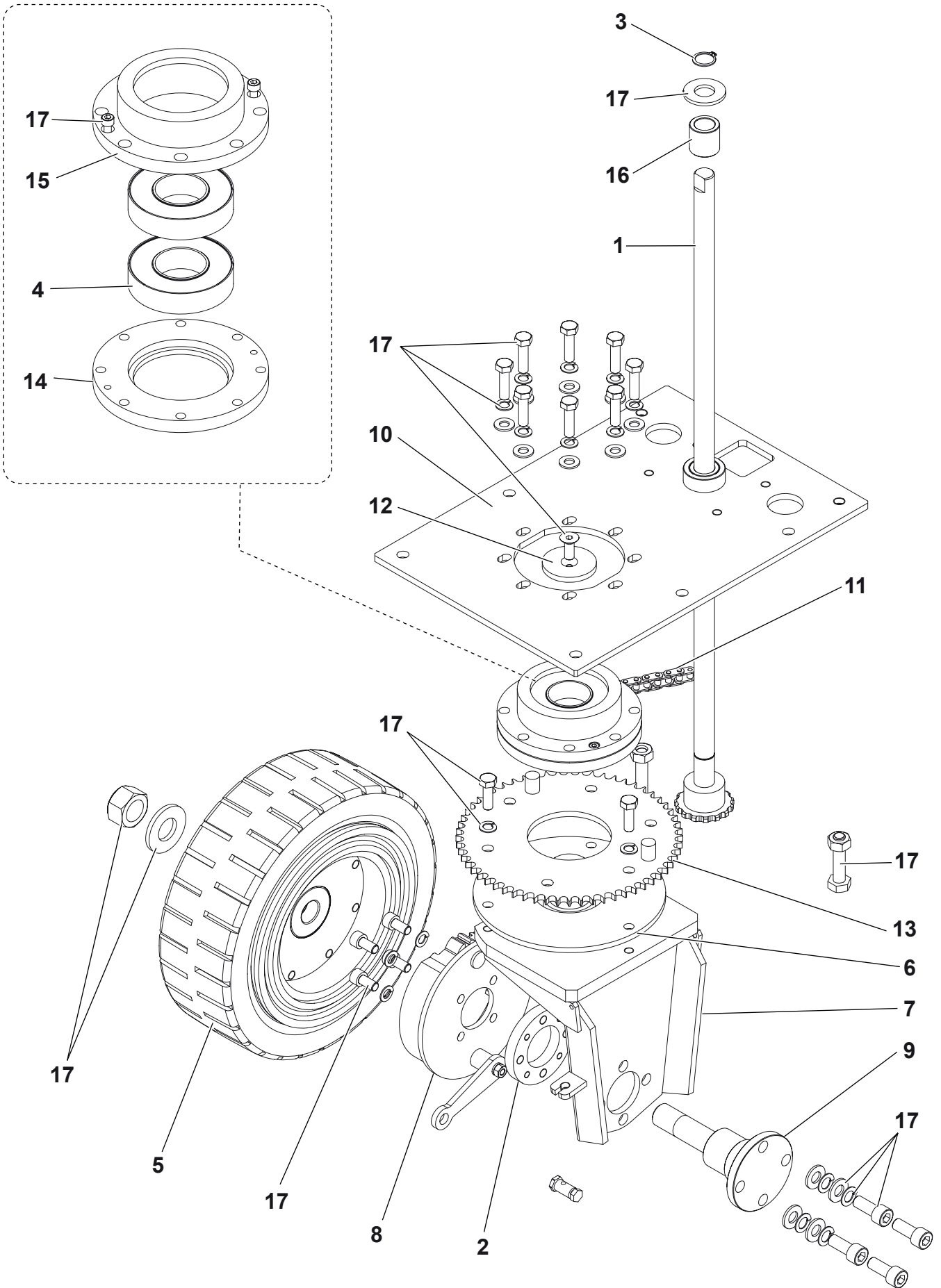
Terra™ 4300 B



Item	Ref. No.	Qty	Description
1	145 1792 000	1	PIN SIDE BROOM
2	145 1951 000	1	PIN SIDE BROOM
3	145 2644 000	1	SPRING 6.2X15X0.5
4	145 9624 000	1	SPLIT PIN 3X20
5	1463152000	1	SUPP. LEFT SIDE BROOM
6	1463954000	1	REDUCTION MOTOR 60W
7	145 5125 000	2	CARBON BRUSH
8	1463160000	1	FLANGE
9	1463969000	1	SIDE BROOM NAT.FIBRE
9*	1463952000	1	SIDE BROOM STEEL MIX
10	1463960000	1	CLIP WITH PIN
11	1463957000	1	BRACKET CABLE FIXING
12	909 5312 000	1	SPACER 8.2X12X13.5
13	145 2612 000	1	PULLEY
14	146 2520 000	1	CABLE LEFT SIDE BROOM
15	146 2470 000	1	KNOB M6
16	146 2471 000	1	HANDWHEEL
17	1464100000	1	SIDE BROOM HARDWARE KIT



Item	Ref. No.	Qty	Description
1	145 1946 000	1	STEERING COLUMN
2	146 2445 000	1	STEERING COLUMN
3	146 2446 000	1	SUPPORT
4	146 2449 000	1	PISTON
5	146 2452 000	2	SUPPORT
6	146 2450 000	2	ROD TENSION M5X52
7	145 9619 000	1	JOINT
8	145 9679 000	2	MICROSWITCH 16A 250V
9	146 2456 000	2	BELLOW RUBBER
10	146 2458 000	1	LEVER
11	1463804000	1	RIGHT LEVER
12	146 2453 000	2	HANDLE LEVER
13	146 2212 000	1	FRONT COVER
14	145 1854 000	1	WHEEL STEERING
15	146 2457 000	1	BELLOW RUBBER
16	1463803000	1	LEFT LEVER
17	145 8753 000	1	CAP
18	145 4540 000	1	CIRCLIP M10
19	146 2451 000	1	CABLE
20	145 9666 000	1	FORK M10
21	145 9769 000	2	DOWEL M4X6
22	146 2466 000	1	LEVER MAIN BROOM
23	146 2505 000	1	PLATE MAIN BROOM
24	146 2467 000	1	LEVER MAIN BROOM
25	146 2468 000	1	BAR M10X410
26	1463963000	1	LEVER SIDE BROOM
27	146 1646 000	1	MICRO RELAIS 24V
28	146 2850 000	1	STEERING SYSTEM HARDWARE KIT

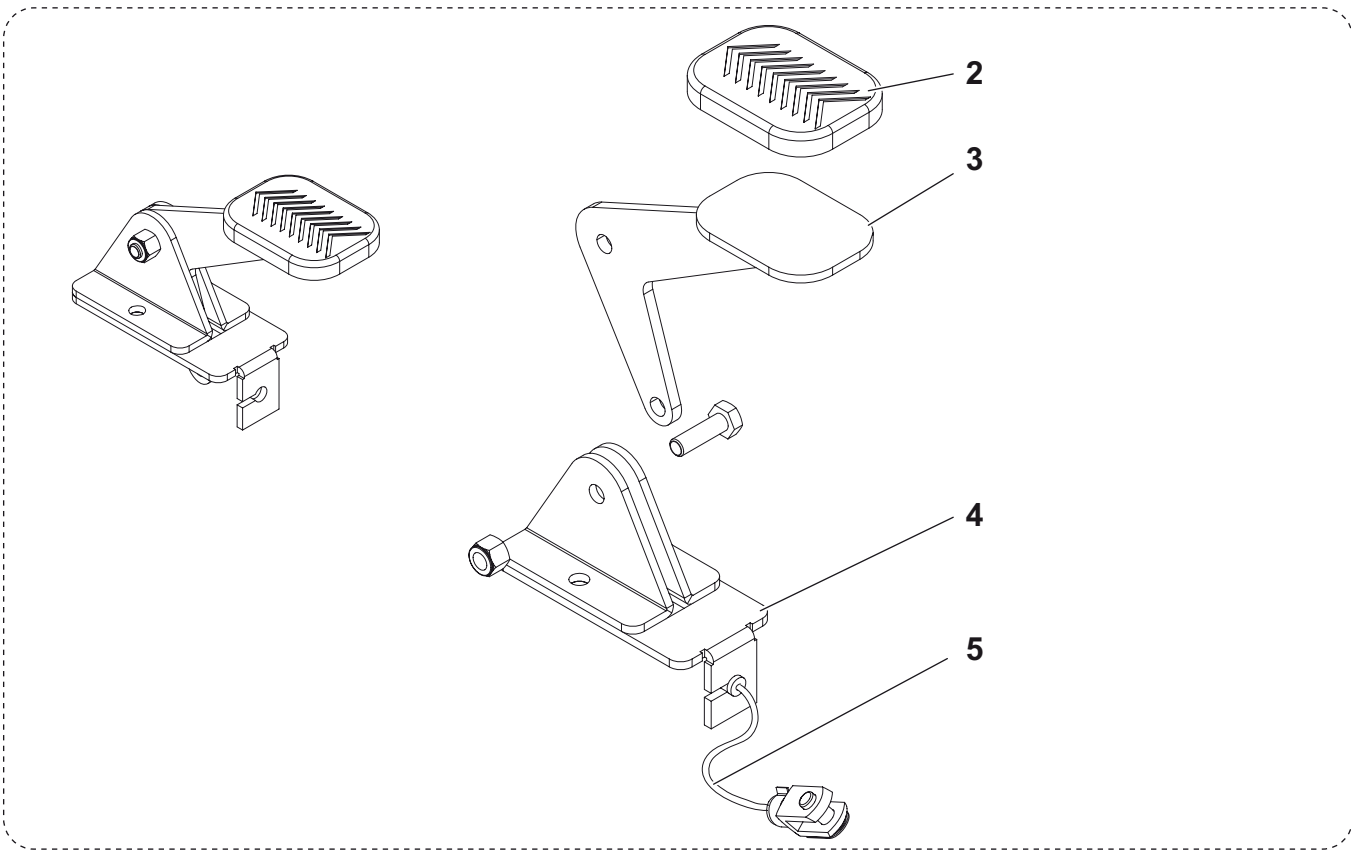


Item	Ref. No.	Qty	Description
1	146 0960 000	1	STEERING SHAFT
2	145 1747 000	1	FLANGE BRAKE FR. WHEEL
3	33006056	1	RING RETAINING E 17
4	145 2357 000	2	BALL BEARING
5	146 2442 000	1	FRONT WHEEL
5*	146 2745 000	1	NON MARKING FRONT WHEEL
6	146 2438 000	1	SPACER
7	146 2437 000	1	SUPPORT FRONT WHEEL
8	146 2441 000	1	BLOCK FOR BRAKE
9	146 2440 000	1	PIN FRONT WHEEL
10	146 2439 000	1	PLATE SUPPORTING
11	146 2443 000	1	CHAIN 3/8" - 73 PITCHES
12	145 2585 000	1	WASHER
13	145 2714 000	1	CROWN
14	145 2587 000	1	FLANGE
15	145 2586 000	1	FLANGE
16	145 9505 000	1	BUSH BBB 17X25X25
17	146 2851 000	1	FRONT WHEEL HARDWARE KIT

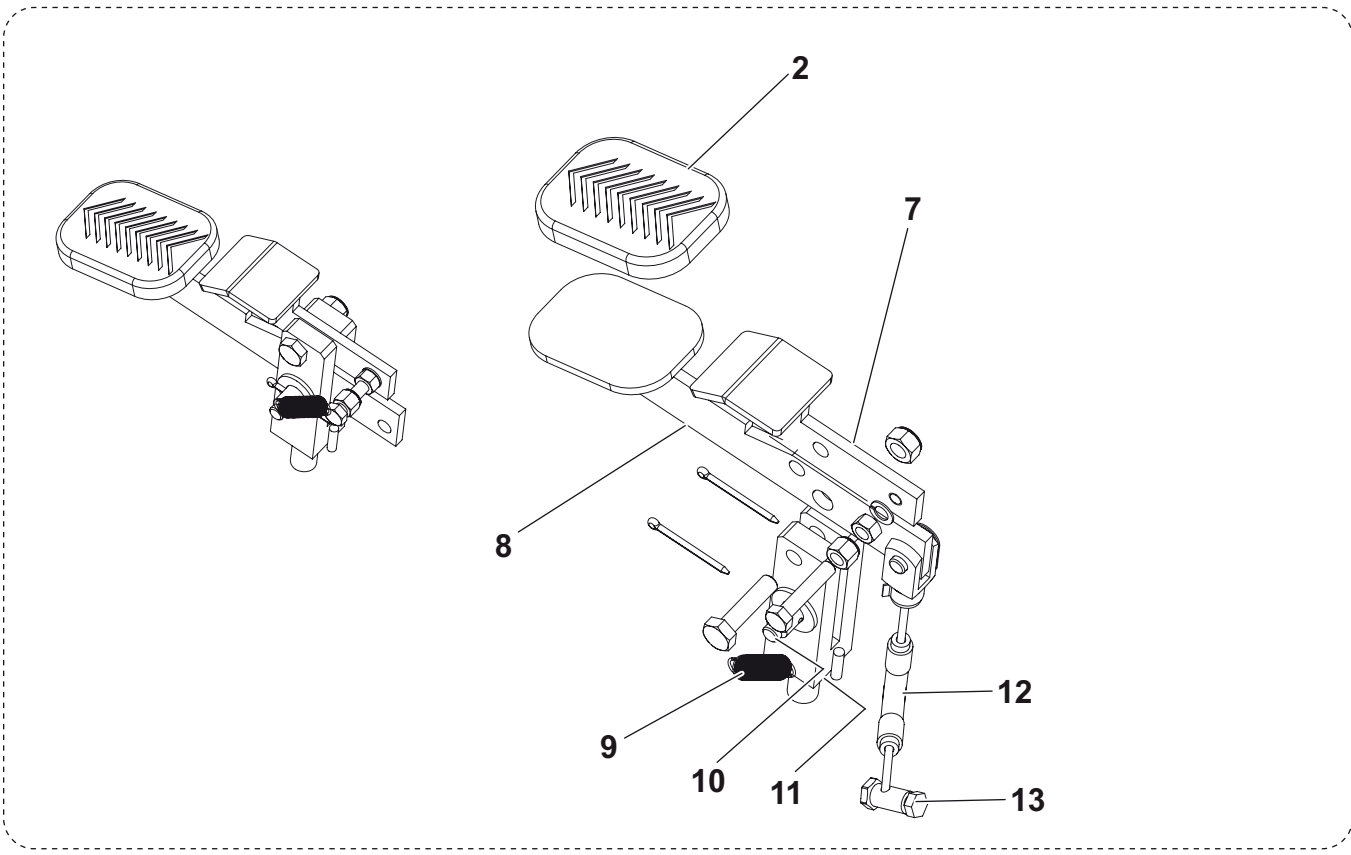
20

Terra™ 4300 B

1

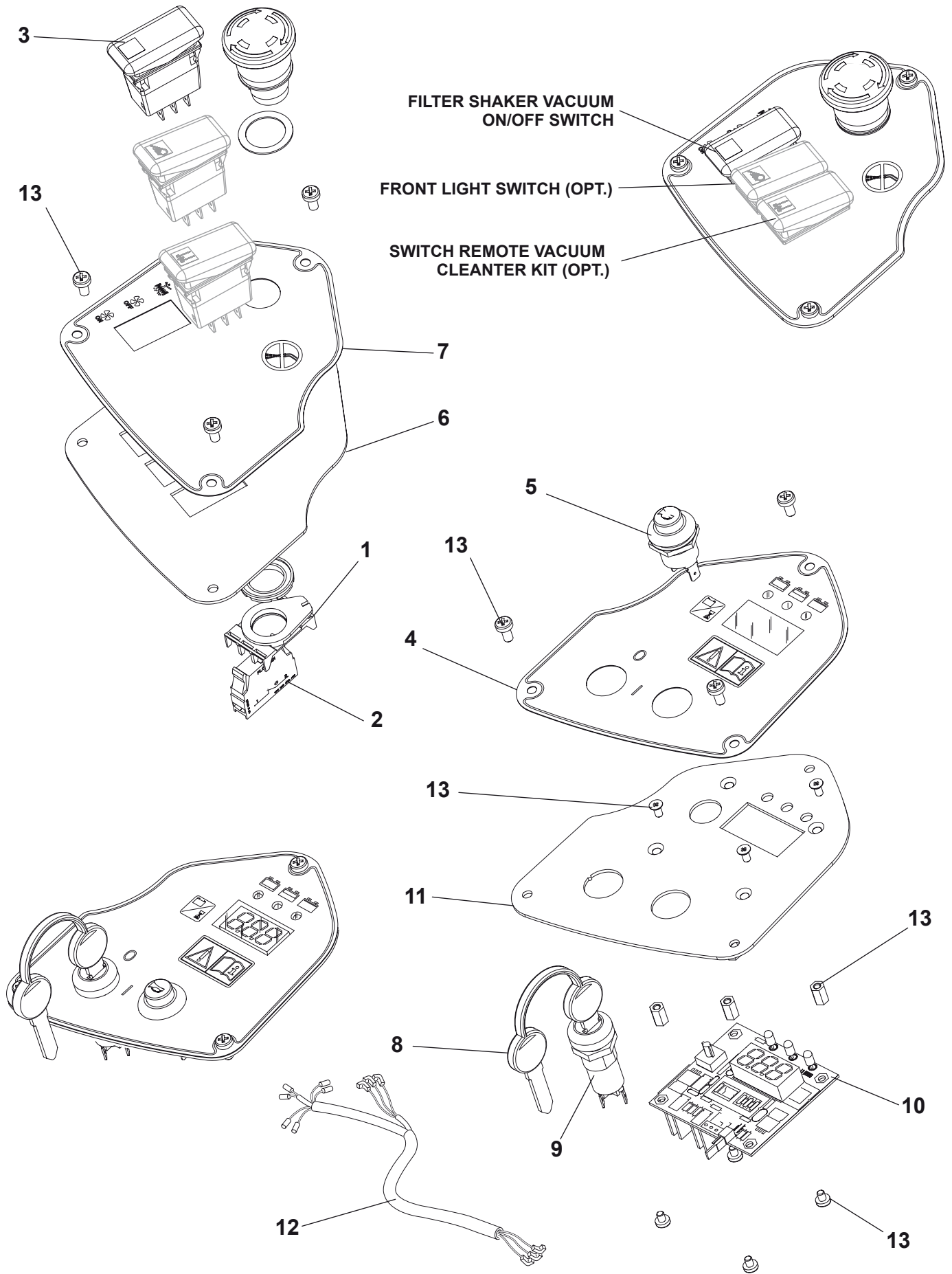


6

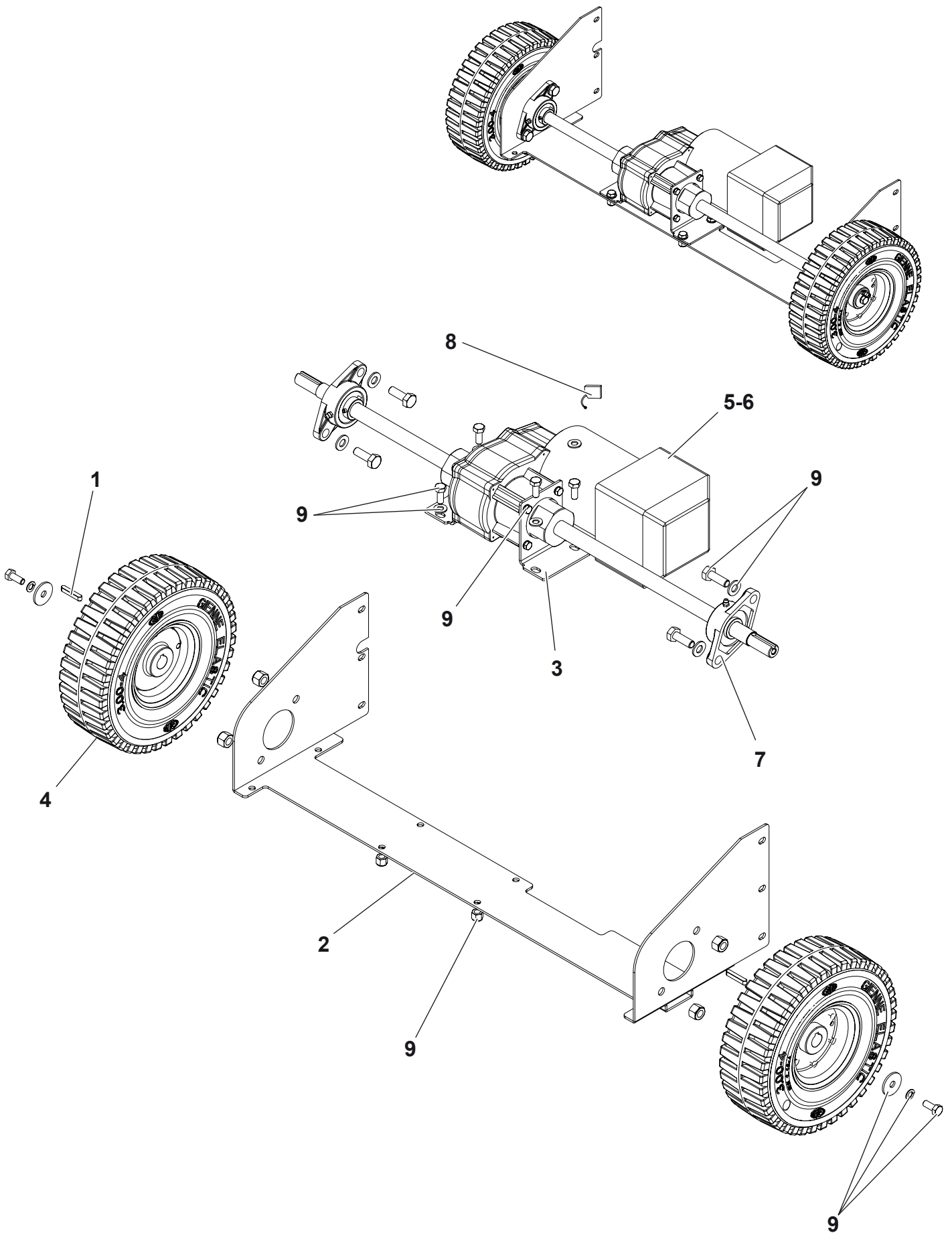


Item	Ref. No.	Qty	Description
1	146 2852 000	1	SKIRT RAISING DEVICE KIT (2,3,4,56)
2	145 8478 000	2	PEDAL COVER
3	145 1841 000	1	PEDAL SKIRT RAIS. DEVICE
4	145 1839 000	1	PEDAL SUPPORT
5	146 2477 000	1	CABLE SKIRT RAISING DEVICE
6	146 2853 000	1	BRAKE PEDAL KIT (2,7,8,9,10,11,12)
7	145 3490 000	1	PEDAL BRAKE
8	145 3472 000	1	PEDAL
9	145 9290 000	1	SPRING
10	145 2541 000	1	PIN PEDAL
11	145 2540 000	1	SUPPOT PEDAL
12	146 2463 000	1	CABLE BRAKE
13	146 2444 000	1	CLAMP CABLE

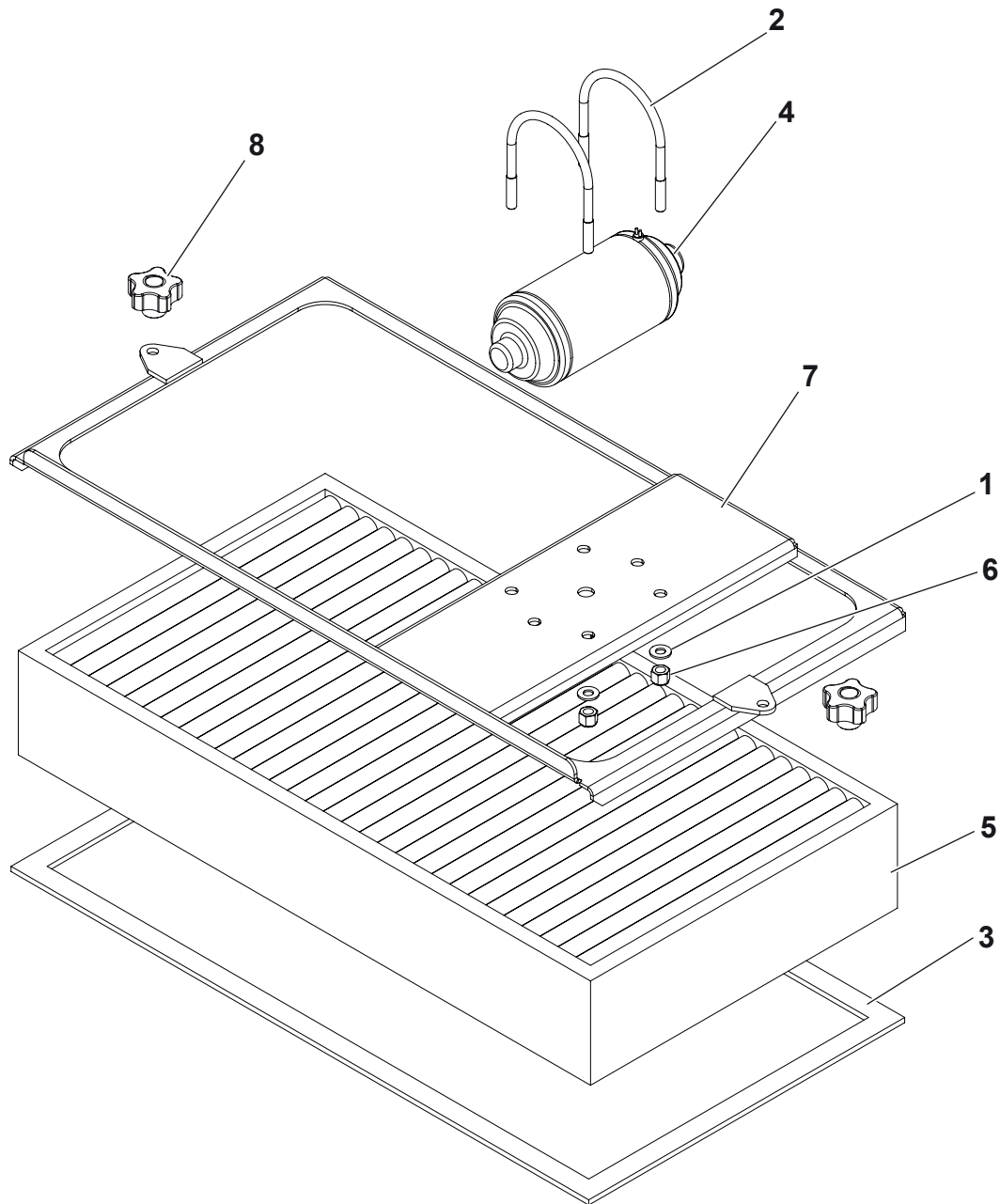
Item	Ref. No.	Qty	Description
1	146 2952 000	1	SPEED CONTROL PEDAL COMPLETE KIT
2	145 1147 000	2	SPRING WASHER
3	146 2929 000	1	SPEED CONTROL PEDAL BRACKET
4	146 2930 000	1	SPEED CONTROL PEDAL SUPPORT
5	146 2910 000	1	SPEED CONTROL PEDAL
6	146 2062 000	1	GASKET
7	146 2315 000	1	PEDAL GASKET
8	146 2480 000	1	HARNESS DRIVE PEDAL
9	146 2882 000	1	LEVER
10	146 2883 000	1	SPRING
11	146 2884 000	1	SPACER
12	145 4086 000	1	PEDAL COVER
13	909 6834 000	1	PEDAL ASSEMBLY HARDWARE KIT



Item	Ref. No.	Qty	Description
1	146 1727 000	1	EMERGENCY SWITCH
2	146 1728 000	1	CONTACT
3	146 2532 000	1	SWITCH
4	1463989000	1	DECAL CONTROL PANEL RIGHT
5	145 9678 000	1	BUTTON HORN
6	146 2460 000	1	CONTROL PANEL LEFT
7	1463987000	1	DECAL CONTROL PANEL LEFT
8	146 2887 000	1	KEY
9	146 2888 000	1	KEY SWITCH
10	146 1721 000	1	ELECTRONIC BOARD
11	146 2459 000	1	CONTROL PANEL RIGHT
12	146 2489 000	1	HARNESS CONTROL PANEL
13	146 2854 000	1	CONTROL PANEL HARDWARE KIT



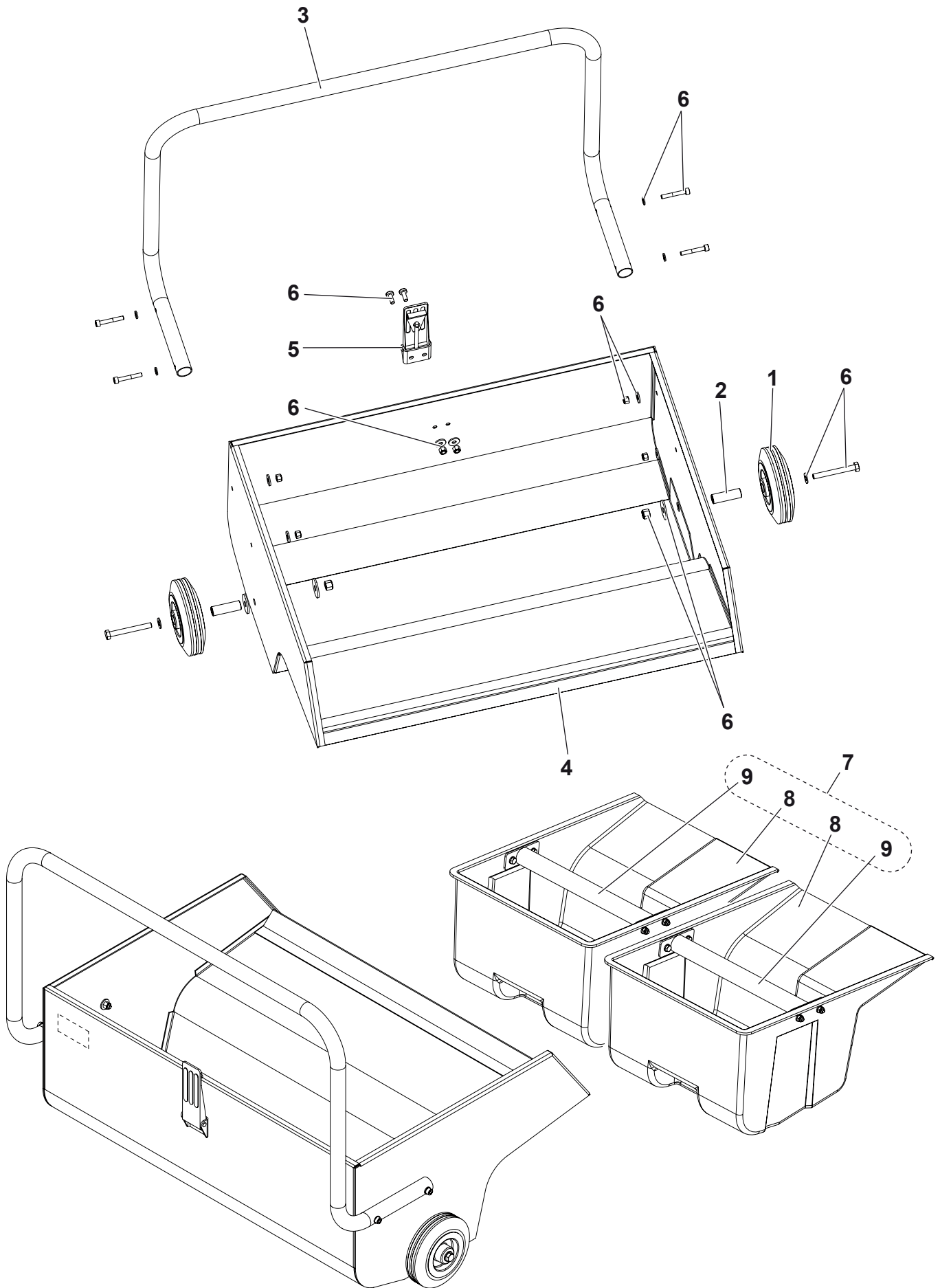
Item	Ref. No.	Qty	Description
1	145 9776 000	2	KEY 6X6X35
2	1463951000	1	BRIDGE REAR WHEELS
3	146 2435 000	2	DRIVE MOTOR SUPPORT
4	146 2433 000	2	WHEEL REAR
4*	146 2746 000	1	NON MARKING REAR WHEEL
5	1463228000	1	KIT DRIVE MOTOR
6	1463232000	1	KIT DRIVE MOTOR WITH HARNESS MACHINE
7	146 2436 000	2	BALL BEARING WITH FLANGE
8	L08603949	1	KIT CARBON BRUSHES
9	146 2855 000	1	DRIVE SYSTEM HARDWARE KIT



Item	Ref. No.	Qty	Description
1	33005915	4	WASHER FLAT 8X17
2	146 0072 00	2	CLAMP
3	146 2729 000	1	KIT FILTER GASKETS
4	146 2795 000	1	KIT FILTER SHAKER
5	1463523000	1	FILTER PAPER
5*	145 6013 000	1	POLYESTER FILTER ANTISTATIC
5*	146 2759 000	1	POLYESTER FILTER
6	33005565	4	NUT HEX SELFLOCK M8
7	146 2428 000	1	FILTER SHAKER FRAME
8	146 1851 000	2	KNOB M8
0*	146 2731 000	1	PRE-FILTER

30

Terra™ 4300 B



2009-06

WASTE CONTAINER ASSEMBLY

Terra™ 4300 B

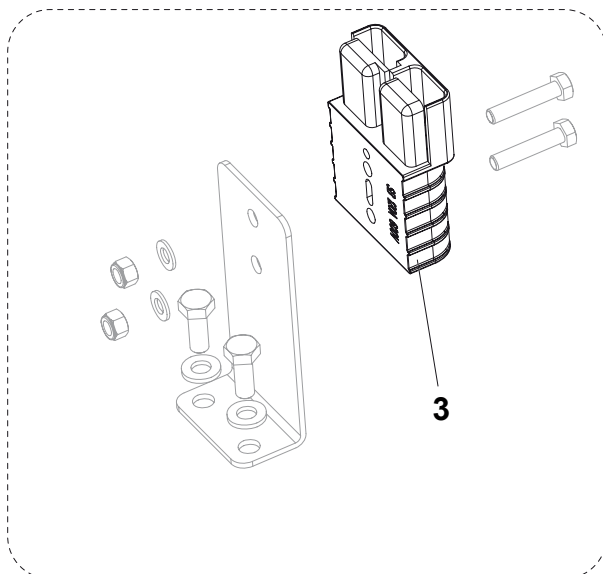
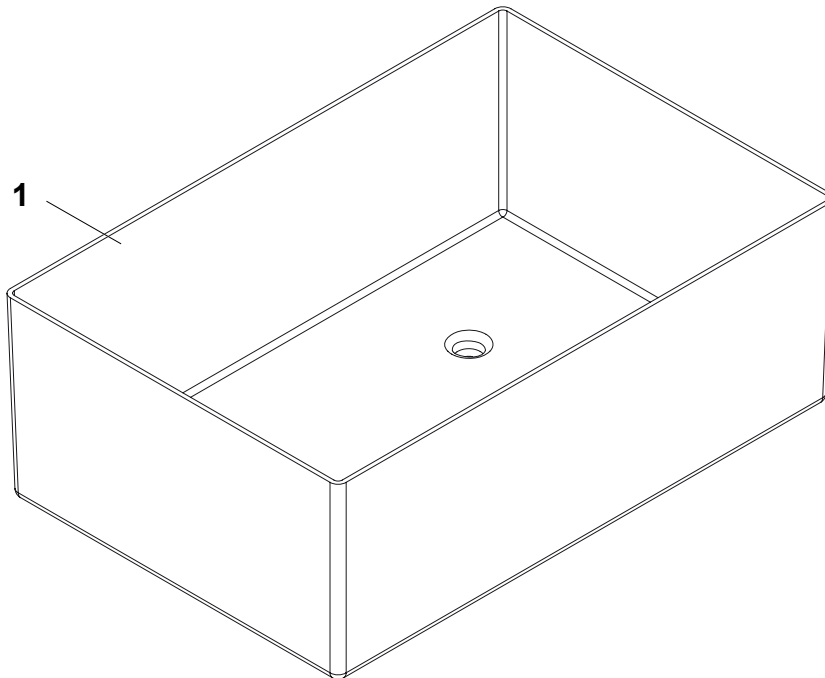
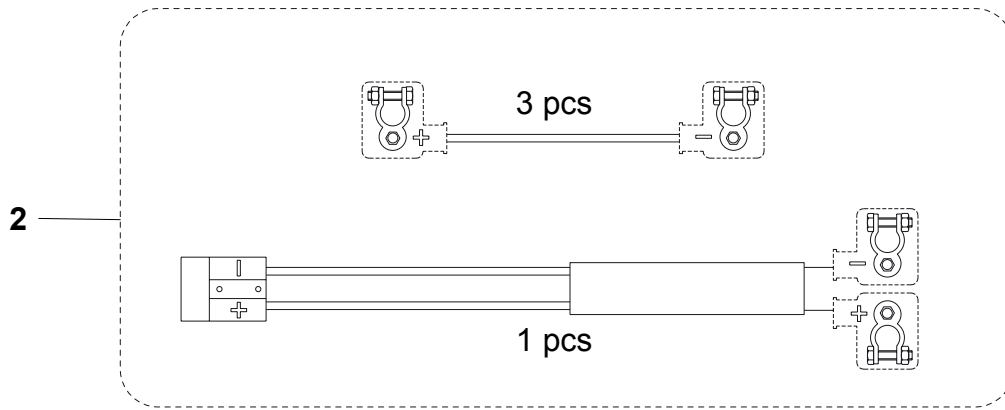
31

Item	Ref. No.	Qty	Description
1	145 5116 000	2	WHEEL
2	145 5118 000	2	BUSHING
3	1463958000	1	HANDLE WASTE CONTAINER
4	1463948000	1	CONTAINER WASTE
5	145 9330 000	1	HOOK
6	146 2856 000	1	WASTE CONTAINER HARDWARE KIT
7*	1463981000	1	MINI DIRT CONTAINERS KIT
8	1463973000	2	CONTAINER DURT
9	1464212000	2	HANDLE MINI CONTAINER

Item	Ref. No.	Qty	Description
1	L08812633	1	FUSE 10A
2	145 8513 000	1	FUSE 30A
3	145 0227 000	1	FUSE 40A
4	146 2484 000	1	COVER BOX EL. COMP.
5	145 8514 000	2	FUSE 25A
6	146 0659 000	1	FUSE HOLDER
7	146 0708 000	1	INSULATOR M6
8	146 0719 000	1	ELECTROM. SWITCH 24V
9	146 1170 000	1	FUSE 8 WAYS HOLDER
10	145 3712 000	2	RELAY 24V
11	146 2486 000	1	FUSE 70A
12	909 5706 000	1	FUSE 30A
13	1463962000	1	BOX ELECTRIC COMPONENTS
14	146 2483 000	1	ELECTRONIC BOARD
15	145 9853 000	2	FUSE 15A
16	146 2485 000	2	GROMMET
17	146 2802 000	1	GASKET ELECTRIC BOX
18	1463961000	1	PLATE FOR HARDNESS
19	1463229000	1	HARNESS MACHINE
20	1463157000	1	GROMMET
21	1463180000	1	HARNESS ELECTRIC BOX
22	146 2857 000	1	ELECTRICAL COMPONENTS HARDWARE KIT

34

Terra™ 4300 B



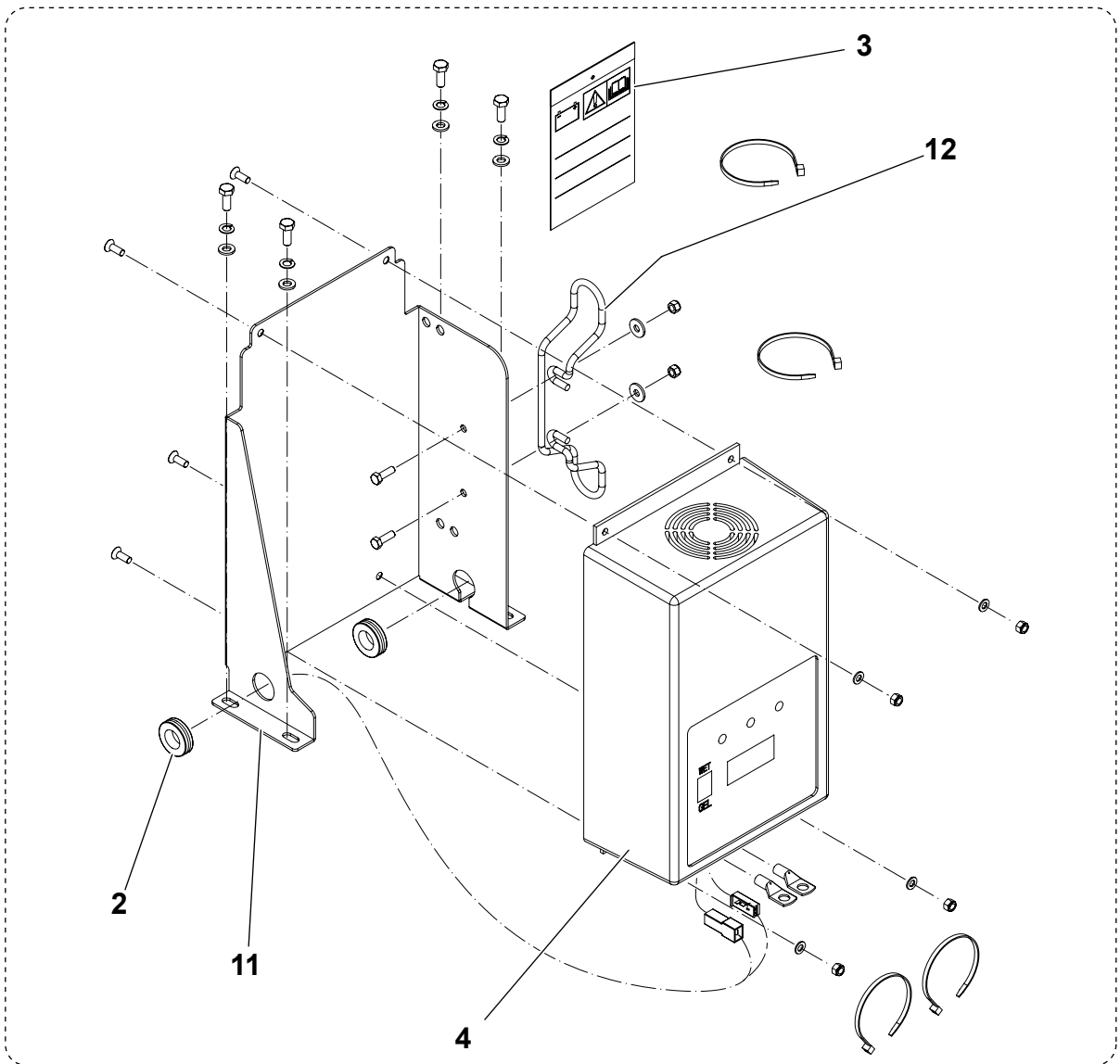
2009-06

ELECTRICAL COMPONENTS

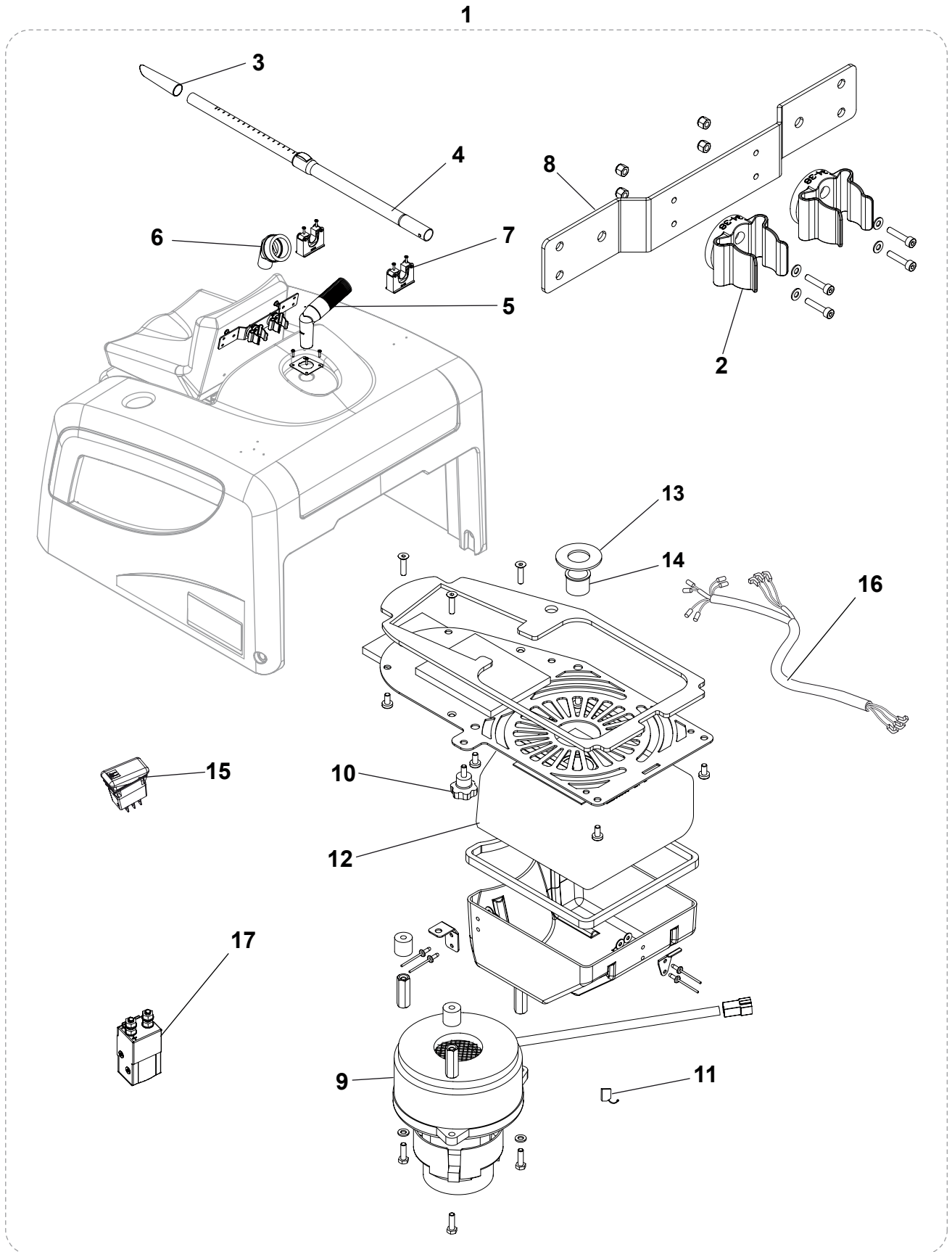
Terra™ 4300 B

35

Item	Ref. No.	Qty	Description
1	145 4692 000	1	CONTAINER BATTERY
1*	146 2791 000	1	KIT BRACKETS F HIGH CAPACITY BATTERY BOX
2	146 2492 000	1	HARNESS BATTERY
3	146 1986 000	1	CONNECTOR 120A

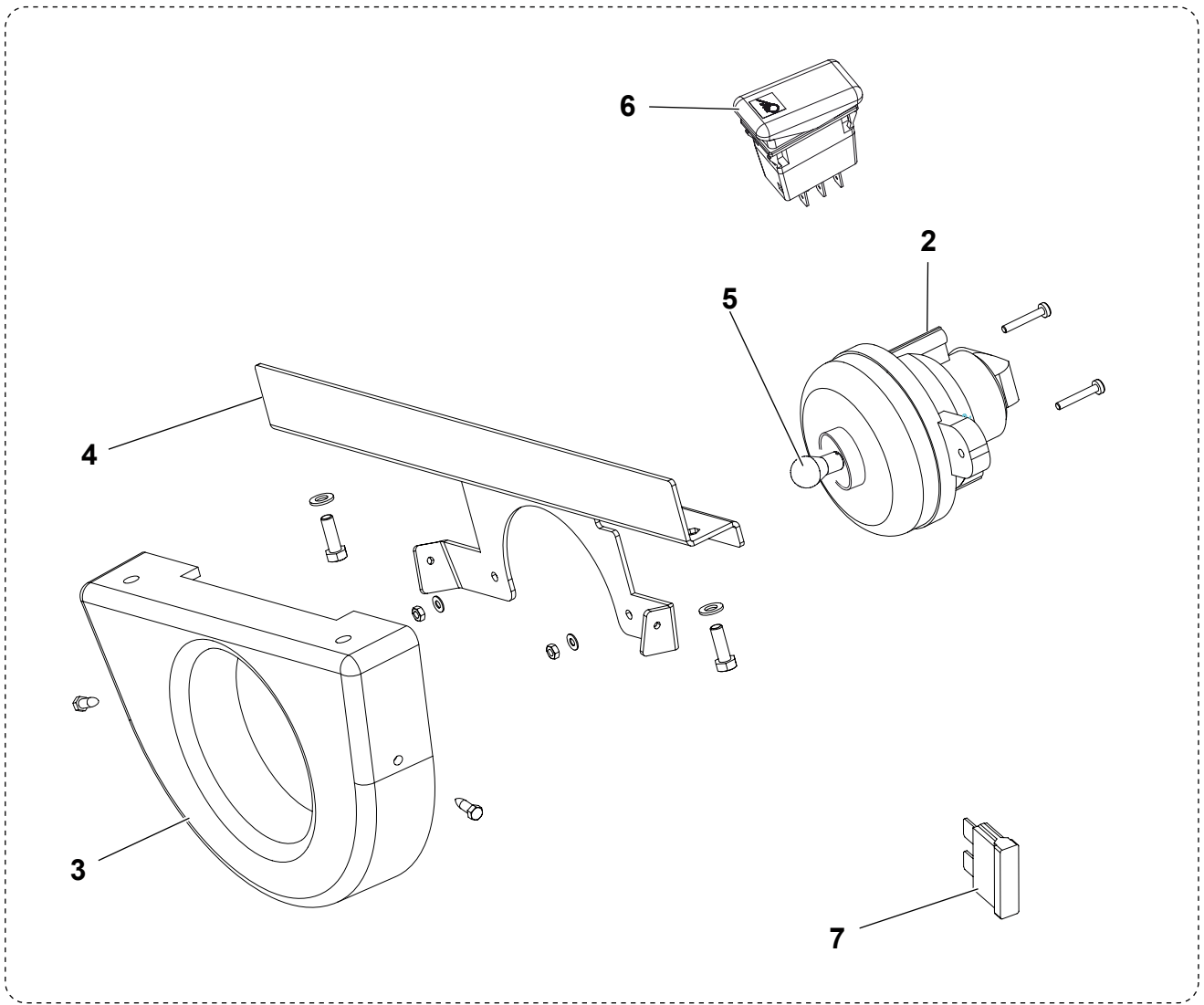


Item	Ref. No.	Qty	Description
1	146 2823 000	1	KIT ON BOARD BATTERY CHARGER 115V
2	145 1237 000	2	CHOCK Ø22
1	146 0803 000	1	CARD INSTRUCTION
4	146 2132 000	1	CHARGER BAT. CPL. 110V
[5]	146 2141 000	1	FUSE 15A
[6]	146 2140 000	1	ELECTRONIC BOARD
[7]	146 2143 000	1	DISPLAY CARD
[8]	146 2145 000	1	CABLE
[9]	146 2142 000	1	COOLING FAN
[10]	146 0801 000	1	SWITCH WET/GEL
11	146 2311 000	1	BRACKET
12	909 5149 000	1	CABLE SUPPORT

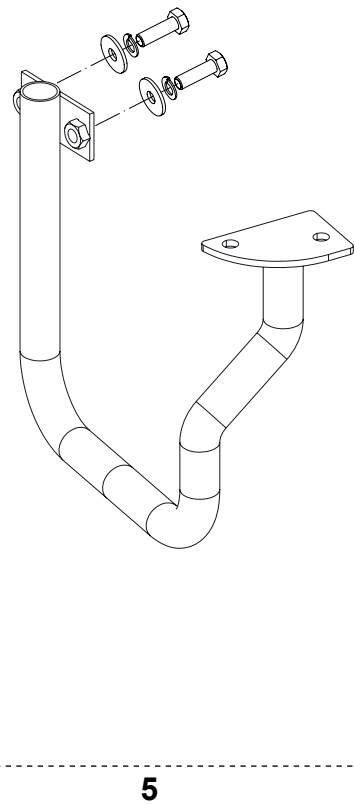
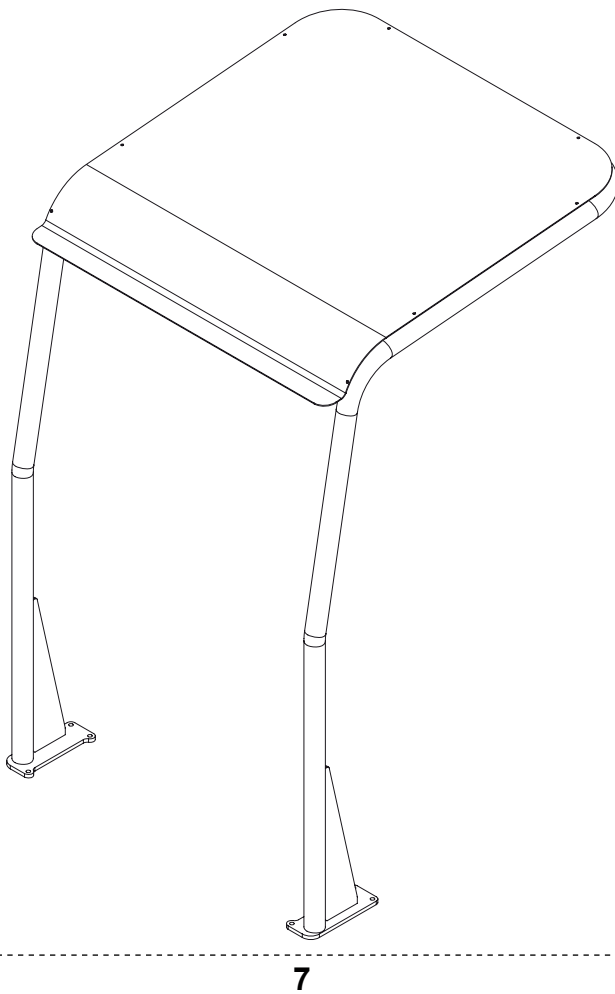
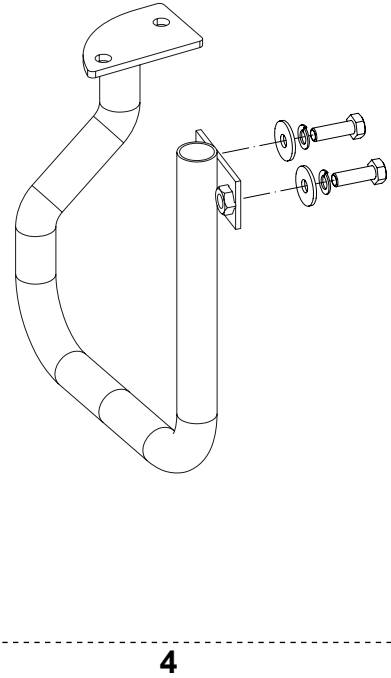
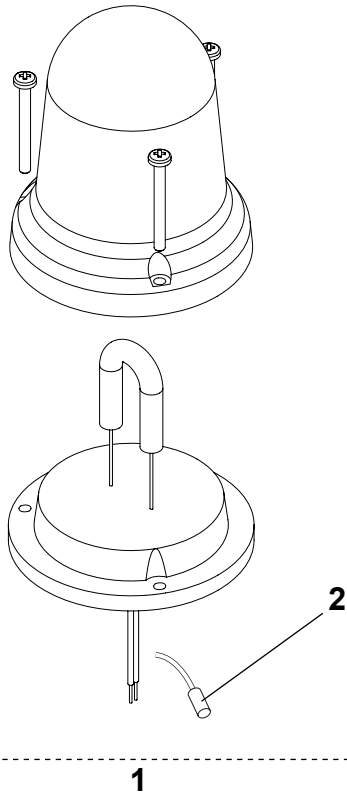


Item	Ref. No.	Qty	Description
1*	146 2524 000	1	KIT VACUUM CLEANER
2	146 2288 000	2	HOSE CLAMP Ø34-38
3	81140900	1	NOZZLE FLEXIBLE
4	011 8130 500	1	TELESCOPIC TUBE
5	140 5691 000	1	PIPE
6	140 8244 000	1	BRUSH NOZZLE
7	146 2289 000	2	HOSE CLAMP Ø30-40
8	146 2291 000	1	TOOL MOUNTING BRACKET
9	146 2133 000	1	VACUUM MOTOR CPL
10	145 2244 000	2	KNOB M6X15
11	909 5074 000	1	KIT CARBON BRUSHES
12	22422400	1	DUST BAG
13	146 2898 000	1	GASKET REMOTE VACUUM PIPE
14	L08812351	1	SPACER
15	146 1973 000	1	SWITCH
16	146 2522 000	1	HARNES VACUUM CLEANER
17	146 0719 000	1	ELECTROMAGNETIC SWITCH
[18]	146 2523 000	1	INSTALLATION INSTRUCTIONS

1



Item	Ref. No.	Qty	Description
1*	1463972000	1	KIT WORKING LIGHT
2	146 1985 000	1	LIGHT
3	146 2528 000	1	PROTECTION WORKING LIGHT
4	1464038000	1	LIGHT SUPPORT PLATE
5	145 5518 000	1	LAMP 24V
6	146 1974 000	1	SWITCH
7	146 0068 00	1	FUSE 10A
[8]	1463974000	1	INSTAL. INSTRUCTIONS



Item	Ref. No.	Qty	Description
1*	146 2692 000	1	KIT FLASHING BEACON
2	145 3738 000	1	TERMINAL
[3]	146 2693 000	1	INSTALLATION INSTRUCTION
4*	1464058000	1	KIT BROOM BUMPER RIGHT
5*	1464105000	1	KIT BROOM BUMPER LEFT
[6]	1464060000	1	INSTALLATION INSTRUCTIONS
7*	146 2735 000	1	KIT OVERHEAD GUARD
[8]	146 2738 000	1	INSTAL.INSTRUTIONS F KIT OVERHEAD GUARD

COMPONENTS

BAT	24V BATTERY
BE1	BEACON (OPT)
BZ1	BACK-UP ALARM / HORN
C1	BATTERY CONNECTOR
C2	CHARGER SECONDARY CONNECTOR
CH1	BATTERY CHARGER (OPT)
EB1	HOUR METER AND BATTERY DISPLAY
EB2	DRIVE ELECTRONIC BOARD
ES1	MAIN BROOM ELECTROM. SWITCH
ES2	SHAKER RELAIS
ES3	VACUUM RELAIS
ES4	REMOTE VAC. EL. SWITCH (OPT)
ES5	SIDE BROOM RELAIS
FA	MAIN BROOM CIRCUIT BREAKER
FB	SIDE BROOMS CIRCUIT BREAKER
FT	DRIVE FUSE (70 A)
F1	SERVICE (MAIN) FUSE (15 A)
F2	SHEAKER FUSE (40 A) (OPT)
F3	REMOTE VACUUM FUSE (40 A) (OPT)
F4	VACUUM FUSE (30 A)
F5	ALARM AND BEACON FUSE (10 A) (OPT)
F6	WORKING LIGHT FUSE (10 A) (OPT)
K1	KEY
LD1	DRIVE DIGNOSTIC LED
L1	WORKING LIGHT (OPT)
M1	MAIN BROOM MOTOR
M2	DRIVE MOTOR
M3	SHEAKER MOTOR
M4	RIGHT BROOM MOTOR
M5	LEFT BROOM MOTOR (OPT)
M6	VACUUM MOTOR
M7	REMOTE VACUUM MOTOR (OPT)
P1	HORN BUTTON
R1	DRIVE SPEED POTENTIOMETER
R2	LED RESISTOR
SWS	SAFETY SWITCH
SW1	BROOM MICROSWITCH
SW2	VACUUM / SHEAKER SWITCH
SW3	REMOTE VACUUM SWITCH (OPT)
SW4	SEAT MICROSWITCH
SW5	SIDE BROOMS MICROSWITCH
SW6	WORKING LIGHT SWITCH (OPT)

RECOMMENDED SPARE PARTS

2009-06

46

Terra™ 4300 B

Ref. No.	Qty	Description
WEAR PARTS		
1463952000	2	SIDE BROOM STEEL MIX
145 4879 000	1	MAIN BROOM PPL
1464062000	1	FRONT SKIRT
145 5927 000	2	SIDE SKIRT
145 1971 000	1	REAR SKIRT
1463523000	1	PANEL FILTER
ORDINARY MAINTENANCE		
145 1851 000	1	MAIN BROOM BELT
146 2477 000	1	CABLE SKIRT RAISING DEVICE
146 2520 000	1	CABLE SIDE BROOM LEFT
146 2475 000	1	CABLE SIDE BROOM RIGHT
1463959000	1	CABLE MAIN BROOM
146 2729 000	1	KIT FILTER GASKETS
146 0630 000	1	GASKET FILTER HATCH
1463977000	1	KIT GASKETS WASTE CONTAINER
145 8360 000	4	CARBON BRUSHES
145 5125 000	4	CARBON BRUSH
L08603949	2	KIT CARBON BRUSHES
909 5074 000	1	KIT CARBON BRUSHES
146 2486 000	1	FUSE 70A
145 0227 000	1	FUSE 40A
145 8514 000	1	FUSE 25A
145 8513 000	1	FUSE 30A
EXTRAORDINARY MAINTENANCE		
146 2433 000	2	REAR WHEEL
146 2442 000	1	FRONT WHEEL
146 2795 000	1	KIT FILTER SHAKER MOTOR
1463147000	1	MAIN BROOM SHOCK ABSORBER 30KG
146 1721 000	1	DISPLAY ELECTRONIC BOARD
146 2887 000	1	KEY SWITCH
146 2483 000	1	POWER ELECTRONIC BOARD
146 2792 000	1	KIT MAIN BROOM MOTOR
1463953000	1	REDUCTION MOTOR 60W
1463954000	1	REDUCTION MOTOR 60W
145 9679 000	2	BROOM MICROSWITCH
146 2532 000	1	SWITCH WITH VACUUM
909 5706 000	1	CIRCUIT BREAKER 30A
L08812633	1	CIRCUIT BREAKER 10A
146 2952 000	1	SPEED CONTROL PEDAL COMPLETE KIT
146 1646 000	1	MICRORELAIS 24V
146 0719 000	1	ELECTROMAGNETIC SWITCH
146 2480 000	1	HARNESS DRIVE PEDAL
146 2463 000	1	CABLE BRAKE

Ref. No.	Qty	Description
1463952000	1	SIDE BROOM STEEL MIX
145 4957 000	1	MAIN BROOM PPL+STEEL 300X700
145 6080 000	1	MAIN BROOM NATURAL FIBRE 300X700
146 2746 000	2	NON MARKING REAR WHEEL
146 2745 000	1	NON MARKING FRONT WHEEL
146 2731 000	1	PRE-FILTER GRID
145 6013 000	1	POLYESTER FILTER - ANTISTATIC
146 2759 000	1	POLYESTER FILTER
146 2735 000	1	KIT OVERHEAD GUARD
1464105000	1	KIT BROOM BUMPER LEFT
1464058000	1	KIT BROOM BUMPER RIGHT
1464101000	1	KIT CARPET
146 2692 000	1	KIT FLASHING BEACON
146 2744 000	1	KIT NON MARKING SKIRTS
1463972000	1	KIT WORKING LIGHT
1463981000	1	KIT MINI CONTAINERS
146 2524 000	1	KIT VACUUM CLEANER
146 2791 000	1	KIT BRACKETS FOR HIGH CAPACITY BATT. BOX
146 2900 000	1	SEAT W/ SAFETY BELTS



**Nilfisk
Advance**

setting standards

Nilfisk-Advance, Inc.

14600 21st Avenue North

Plymouth, MN, 55447-3408

www.nilfisk-advance.com

Phone: 800-989-2235

Fax: 800-989-6566

©2009 Nilfisk-Advance, Inc.,

Plymouth, MN 55447-3408

Printed in Italy