



## Electronic Service Manuals

This electronic document is provided as a service to our customers. We do not create the contents of the information contained in this document. Should you have detailed questions pertaining to the information contained in this document, you may contact Michco, or the manufacturer which provided the original information in this electronic deliverable. Michco's only part in this electronic deliverable was the electronic assembly process. By providing this manual on line we are not guaranteeing parts availability.

You may contact Michco through the following methods:

Phone (517) 484-9312 or (800) 331-3339

2011 N. High St. -- Lansing, Michigan -- 48906

Fax: (517) 484-9836

Email: [CustServe@Michco.com](mailto:CustServe@Michco.com)

Web site: [www.Michco.Com](http://www.Michco.Com)

Parts Web site: [www.FloorMachineParts.Com](http://www.FloorMachineParts.Com)

Order Parts on Line at:

**[www.FloorMachineParts.Com](http://www.FloorMachineParts.Com)**

Directly to Parts & Service:

By Email: **[Shop@Michco.com](mailto:Shop@Michco.com)**

By Fax: (517) 702-2041

By Voice: Use numbers above.

**Serving the Cleaning Industry Since 1922**

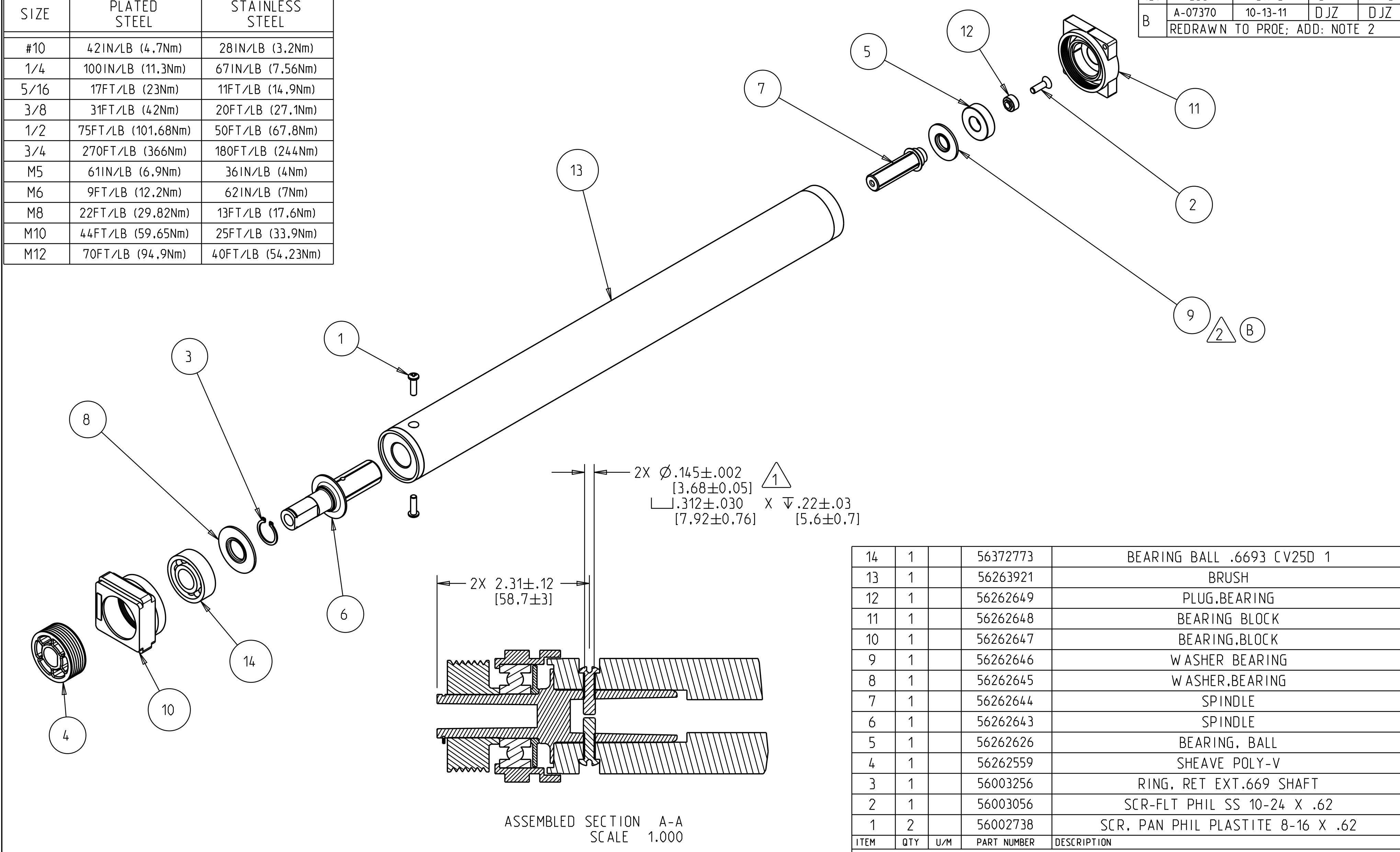
Notice: All copyrighted material remains property of original owners, all trademarks are property of respective owners. Manuals are subject to Manufacturer's reproduction limitations. Originals or reproductions were provided by manufacturers through a request. We make no warranty as to the correctness of information provided in this document and you assume all risk. By placing these manuals on line we are not declaring our corporation to be an manufacturer authorized dealer or provider, please check our web site for authorized manufacturers we represent.

NOMINAL TORQUE SPECIFICATIONS  
 \*UNLESS OTHERWISE SPECIFIED\*  
 (FOR REFERENCE ONLY)

SIZE	PLATED STEEL	STAINLESS STEEL
#10	42IN/LB (4.7Nm)	28IN/LB (3.2Nm)
1/4	100IN/LB (11.3Nm)	67IN/LB (7.56Nm)
5/16	17FT/LB (23Nm)	11FT/LB (14.9Nm)
3/8	31FT/LB (42Nm)	20FT/LB (27.1Nm)
1/2	75FT/LB (101.68Nm)	50FT/LB (67.8Nm)
3/4	270FT/LB (366Nm)	180FT/LB (244Nm)
M5	61IN/LB (6.9Nm)	36IN/LB (4Nm)
M6	9FT/LB (12.2Nm)	62IN/LB (7Nm)
M8	22FT/LB (29.82Nm)	13FT/LB (17.6Nm)
M10	44FT/LB (59.65Nm)	25FT/LB (33.9Nm)
M12	70FT/LB (94.9Nm)	40FT/LB (54.23Nm)

CONFIDENTIAL  
 THIS DRAWING AND THE DESIGN REPRESENTED HEREON IS THE PROPERTY OF NILFISK-ADVANCE, INC., PLYMOUTH, MINNESOTA AND IT HAS BEEN ISSUED WITH THE UNDERSTANDING THAT IT WILL NOT BE REPRODUCED NOR COPIED NOR USED FOR ANY PURPOSE OTHER THAN FOR WHICH IT WAS ISSUED AND RECIPIENT AGREES TO RETURN IT UPON REQUEST.

DWG NO	56263922	SHEET	1	REVISIONS		
REV	ECO	DATE	DFTM	APPD		
B	A-07370	10-13-11	DJZ	DJZ		
REDRAWN TO PROE; ADD: NOTE 2						



ITEM	QTY	U/M	PART NUMBER	DESCRIPTION
14	1		56372773	BEARING BALL .6693 CV25D 1
13	1		56263921	BRUSH
12	1		56262649	PLUG,BEARING
11	1		56262648	BEARING BLOCK
10	1		56262647	BEARING,BLOCK
9	1		56262646	WASHER BEARING
8	1		56262645	WASHER,BEARING
7	1		56262644	SPINDLE
6	1		56262643	SPINDLE
5	1		56262626	BEARING, BALL
4	1		56262559	SHEAVE POLY-V
3	1		56003256	RING, RET EXT.669 SHAFT
2	1		56003056	SCR-FLT PHIL SS 10-24 X .62
1	2		56002738	SCR, PAN PHIL PLASTITE 8-16 X .62

ASSEMBLED SECTION A-A  
SCALE 1.000

APPLY LOCTITE 242 (BLUE) OR EQUIVALENT TO INDICATED THREADS (B)

DRILL HOLES AT ASSEMBLY (1)

-NOTES-

MATERIAL:  
FINISH/COLOR:

NOTES UNLESS OTHERWISE SPECIFIED:  
 1. ALL DIMENSIONS IN INCHES.  
 2. DO NOT SCALE DRAWING.  
 3. ALL DIMENSIONS APPLY AFTER PLATING AND HEAT TREATING, BUT BEFORE PAINTING.  
 4. REMOVE ALL BURRS AND SHARP EDGES.

DIM. IN [ ] ARE MM.  
 UNITS IN [ ] ARE ISO METRIC AS NOTED.

DRAWN	10-13-11	DJZ
CHECKED		
PRJ ENG		
APPD		
APPD		
APPD		

TITLE: BRUSH ASSY

SIZE: C DWG NO: 56263922

PRO-E DATA: FUO AQUA 20E SCALE: 0.500 ASSY 56263689 SHEET 1 OF 1

Nilfisk Advance NILFISK-ADVANCE, INC. PLYMOUTH, MN 55447 SPRINGDALE, AR 72764