



Electronic Service Manuals

This electronic document is provided as a service to our customers. We do not create the contents of the information contained in this document. Should you have detailed questions pertaining to the information contained in this document, you may contact Michco, or the manufacturer which provided the original information in this electronic deliverable. Michco's only part in this electronic deliverable was the electronic assembly process. By providing this manual on line we are not guaranteeing parts availability.

You may contact Michco through the following methods:

Phone (517) 484-9312 or (800) 331-3339

2011 N. High St. -- Lansing, Michigan -- 48906

Fax: (517) 484-9836

Email: CustServe@Michco.com

Web site: www.Michco.Com

Parts Web site: www.FloorMachineParts.Com

Order Parts on Line at:

www.FloorMachineParts.Com

Directly to Parts & Service:

By Email: **Shop@Michco.com**

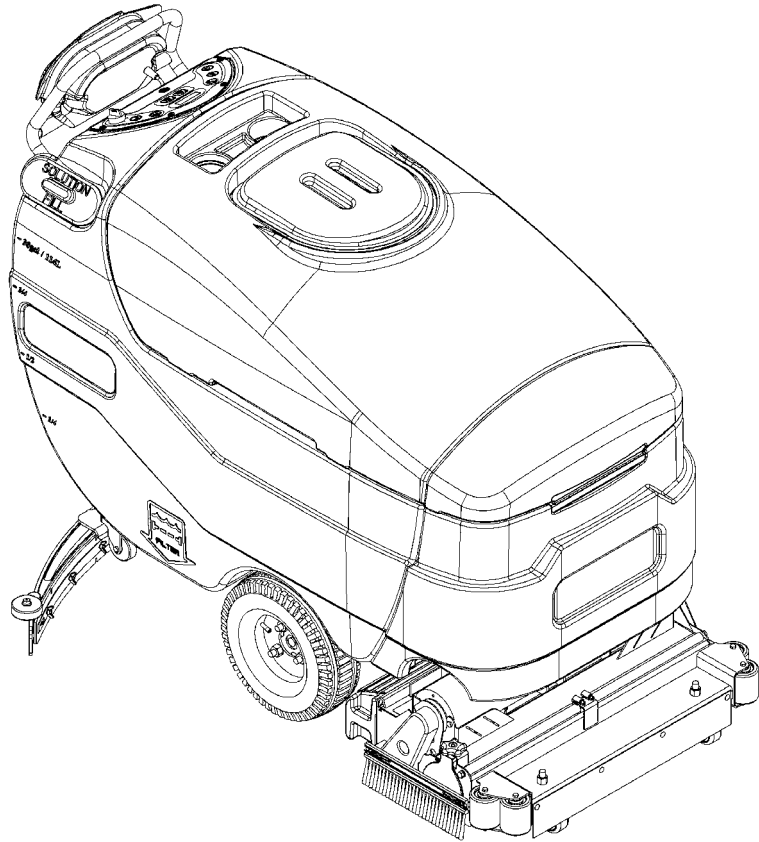
By Fax: (517) 702-2041

By Voice: Use numbers above.

Serving the Cleaning Industry Since 1922

Notice: All copyrighted material remains property of original owners, all trademarks are property of respective owners. Manuals are subject to Manufacturer's reproduction limitations. Originals or reproductions were provided by manufacturers through a request. We make no warranty as to the correctness of information provided in this document and you assume all risk. By placing these manuals on line we are not declaring our corporation to be an manufacturer authorized dealer or provider, please check our web site for authorized manufacturers we represent.

Advancer™



PARTS LIST

Advance Models: 56316000(W28-C), 56316001(W32-C)



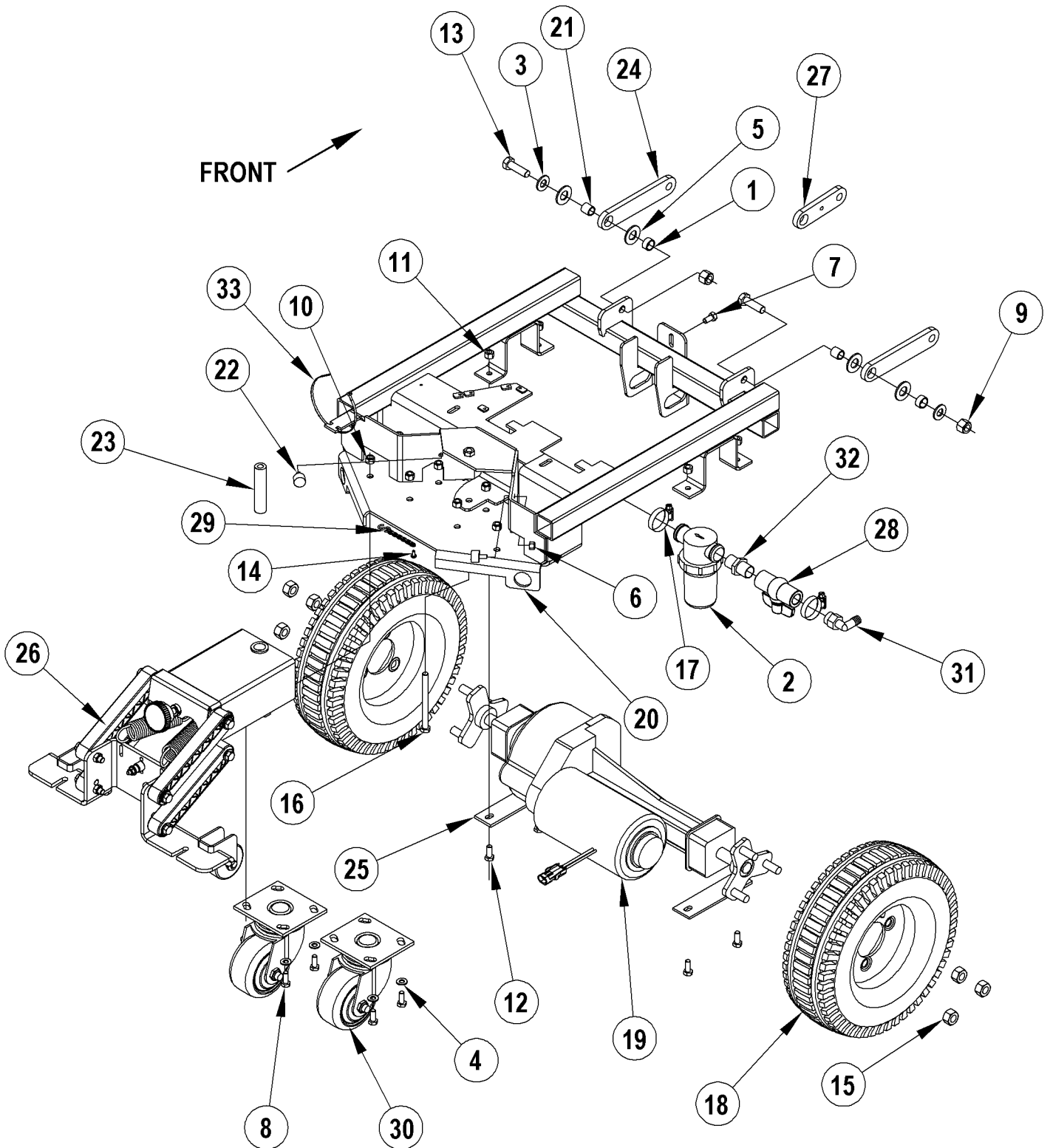
Advance

DESCRIPTION	PAGE
Chassis System	2-3
Chassis System (Squeegee Linkage Assembly)	4-5
Decal System.....	6-7
Recovery System.....	8-9
Scrub System	10-11
Solution / Electrical System-1	12-13
Solution / Electrical System-2.....	14-15
Chemical Assembly	16-17
Paddle Assembly	18-19
Squeegee Assembly	20-21
Wiring Diagram	22-23
Optional Kits & Accessories.....	24

WHEN ORDERING PARTS

- * Use the part numbers from the "Ref. No." columns in this parts list.
- * Specify the model and serial number of the machine.
- * Use the space below to record the model and serial number for future reference.

Model _____ Serial No. _____

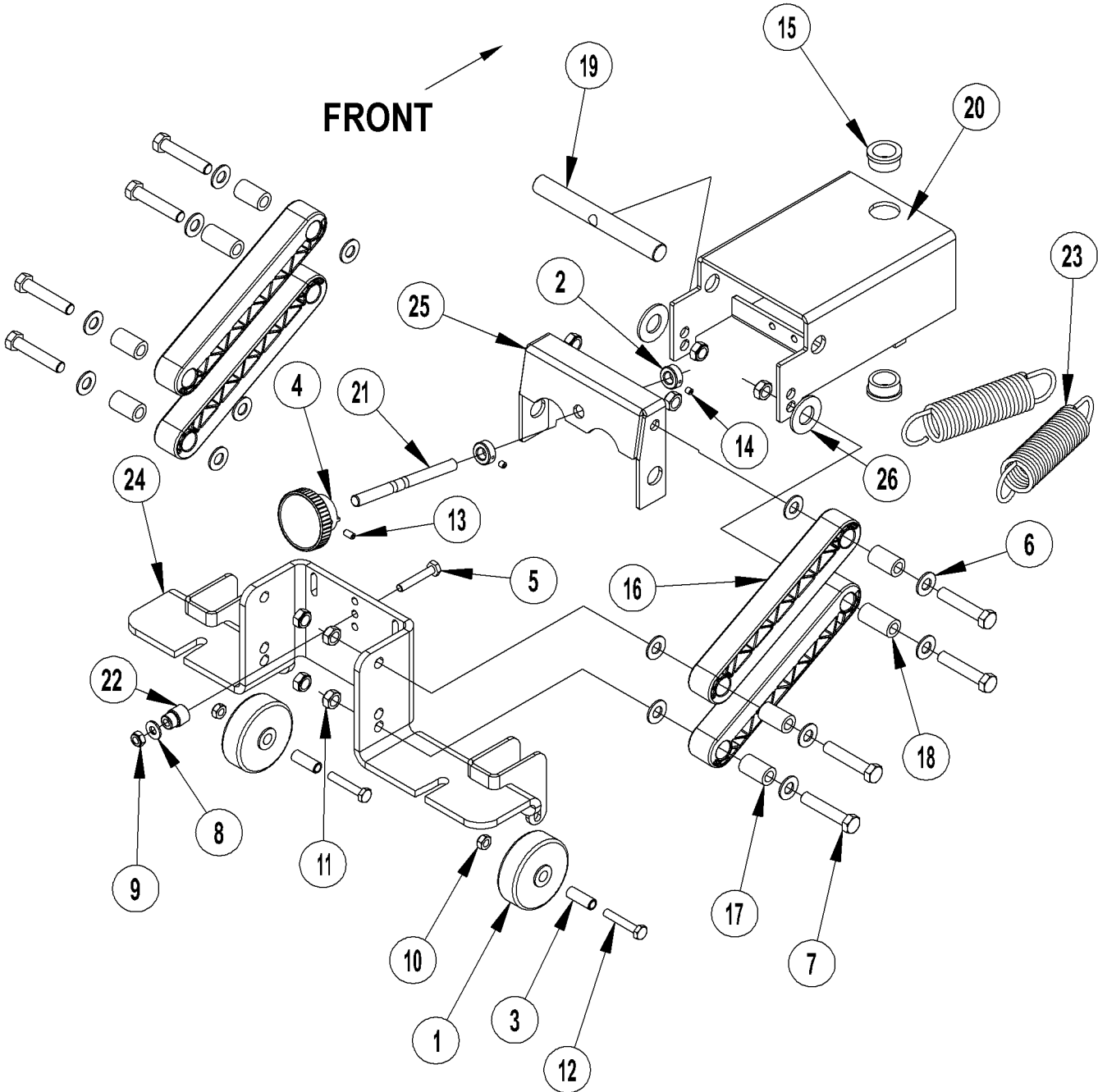


06-3	CHASSIS SYSTEM			
09-11	Adhancer™			3

Item	Ref. No.	Qty	Description
1	56370878	2	Bearing, Sleeve
2	56412173	1	Solution Filter
3	56001879	2	Wsh, Flt SAE 1/2
4	56001939	10	Wsh, Flt SAE 5/16
5	56002022	4	Wsh, Flt SAE 5/8
6	56002708	2	Nut, Hex Nyl Loc 1/4-20
7	56003012	3	Scr, Hex SS 5/16-18 X .75
8	56003179	8	Scr, Hex Thd To Hd M8-1.25 X 20mm
9	56003312	2	Nut, Hex Nyl Loc M12-1.75
10	56003389	8	Nut, Hex Nyl Loc M8-1.25
11	56003405	4	Nut, Hex Nyl Loc SS M8-1.25
12	56003435	4	Scr, Hex SS M8-1.25 X 20mm
13	56003637	2	Scr, Hex M12-1.75 X 40mm
14	56009030	1	Scr, Pan Phil Thd Form 10-24 X .38
15	56009116	6	Nut, Hex Hvy 1/2-20
16	56009241	1	Scr, Hex 3/8-16 X 4.25
17	56131601	2	Clamp, Hose SAE #16
18	56315118	2	Wheel, Drive TSBUS2006-949
	9096219000	2	Wheel, Polyurethane-Traction (optional)
19#	56315063	1	Transaxle, 36v (M1) TSBUS2008-1023 / TSBUS2009-1042
*	56315676	1	Motor
*	56315677	4	Carbon Brush
*	56315678	2	Neoprene Mounting Sleeve
*#	56380511	A/R	Kit-Hub Transaxle 36V TSBUS2008-1023 / TSBUS2009-1042
*#	56380164	1	Kit-Coupling
20	56315073	1	Weldment, Chassis
21	56315080	2	Bushing
22	56315111	2	Cylindrical Mount
23	56315154	1	Bushing, Spacer
24	56315179	2	Linkage Arm
25	56315202	2	Plate, Transaxle Mount
26	56315210	1	Assembly, Squeegee Linkage Large
27	56315239	1	Linkage Arm NOTE 1
28	56315607	1	Ball Valve
29	56315691	1	Ground Chain
30	56365555	2	Caster Swivel 4.0x2.0
31	56409152	1	Barb, 90 Elbow 1/2 X 1/2npt
32	56412182	1	Nipple, Hex 3/4-14
33	56478523	1	Tie, Cable

* = Not Shown
= Revised or new since last update

NOTE 1: As of October 2008 56315239 is no longer used in production. If you need to replace this item please order Kit 56109540.



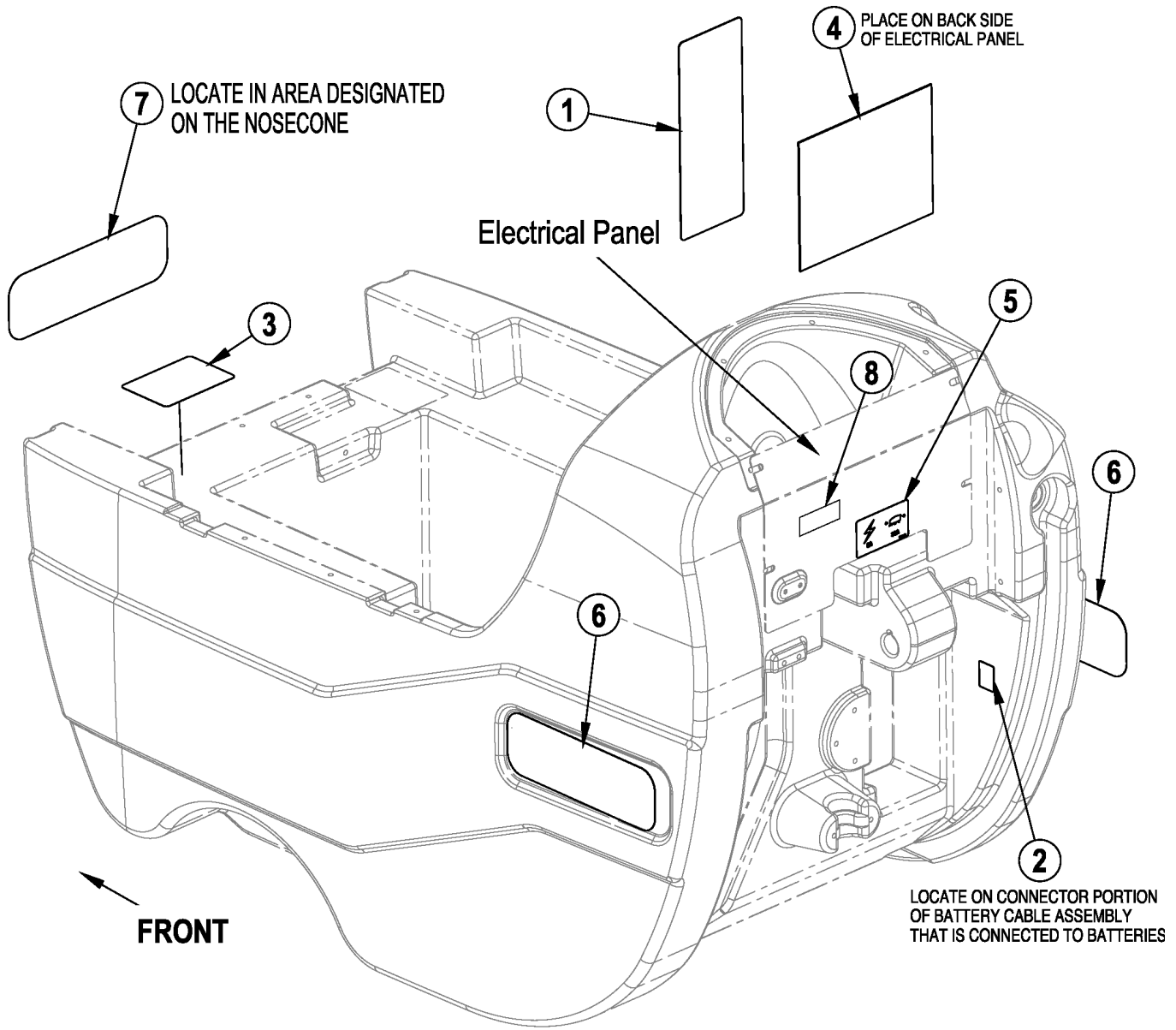
06-3

SQUEEGEE LINKAGE ASSEMBLY

08-4

Adhancer™**5**

Item	Ref. No.	Qty	Description
	56315210	1	Squeegee Linkage Assembly
1	56324350	2	Wheel
2	56331076	2	Collar
3	56315580	2	Bushing, Stainless
4	56475480	1	Knob
5	56001833	1	Scr, Hex 1/4-20 x 1.50
6	56002063	14	Wsh, Flt SAE 3/8
7	56002091	8	Scr, Hex 3/8-16 x 2.00
8	56002098	1	Wsh, Flt SAE 1/4
9	56002840	1	Nut, Hex Nyl Loc-Thin 1/4-20
10	56002850	2	Nut, Hex Nyl Loc-Thin SS 1/4-20
11	56002852	8	Nut, Hex Nyl Loc-Thin SS 3/8-16
12	56002901	2	Scr, Hex SS 1/4-20 x 1.50
13	56003123	1	Scr, Soc Set 10-2 4 x .38
14	56009084	2	Scr, Soc Set Loc 10-24 x .19
15	56250414	2	Bearing, Flange
16	56315941	4	Linkage Arm, Molded
17	56315067	6	Spacer, Phenolic
18	56315068	2	Spacer, Phenolic
19	56315082	1	Pin
20	56315208	1	Weldment, Squeegee Large
21	56315240	1	Rod, Adjustment
22	56315245	1	Bushing, Squeegee Cable
23	56315295	2	Spring, Extension
24	56315698	1	Weldment, Squeegee Mount
25	56315713	1	Bracket, Squeegee Level
26	56002940	2	Wsh, Flt SAE SS 5/8



06-3

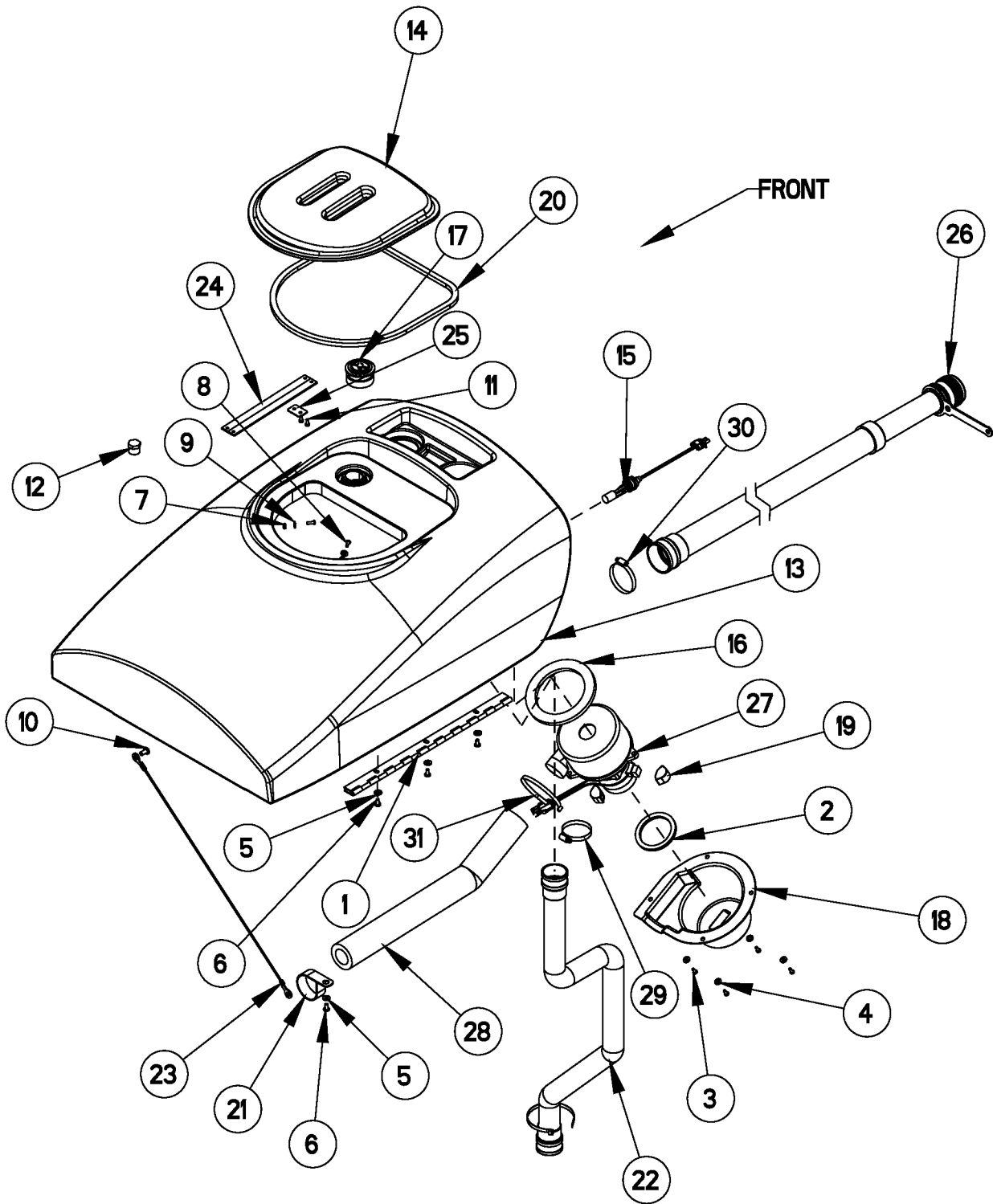
DECAL SYSTEM

08-11

Adhancer™

7

Item	Ref. No.	Qty	Description
1	56014601	1	Decal, Caution
2	56016324	1	Decal, Charger
3	56015259	1	Decal, Battery Wiring
4	56016748	1	Decal, Ladder Diagram
5	56016690	1	Decal, Circuit Breaker
6	56016446	2	Decal, Adhancer
7	56016730	1	Decal, Advance
8	56014450	1	Decal, Patent Number



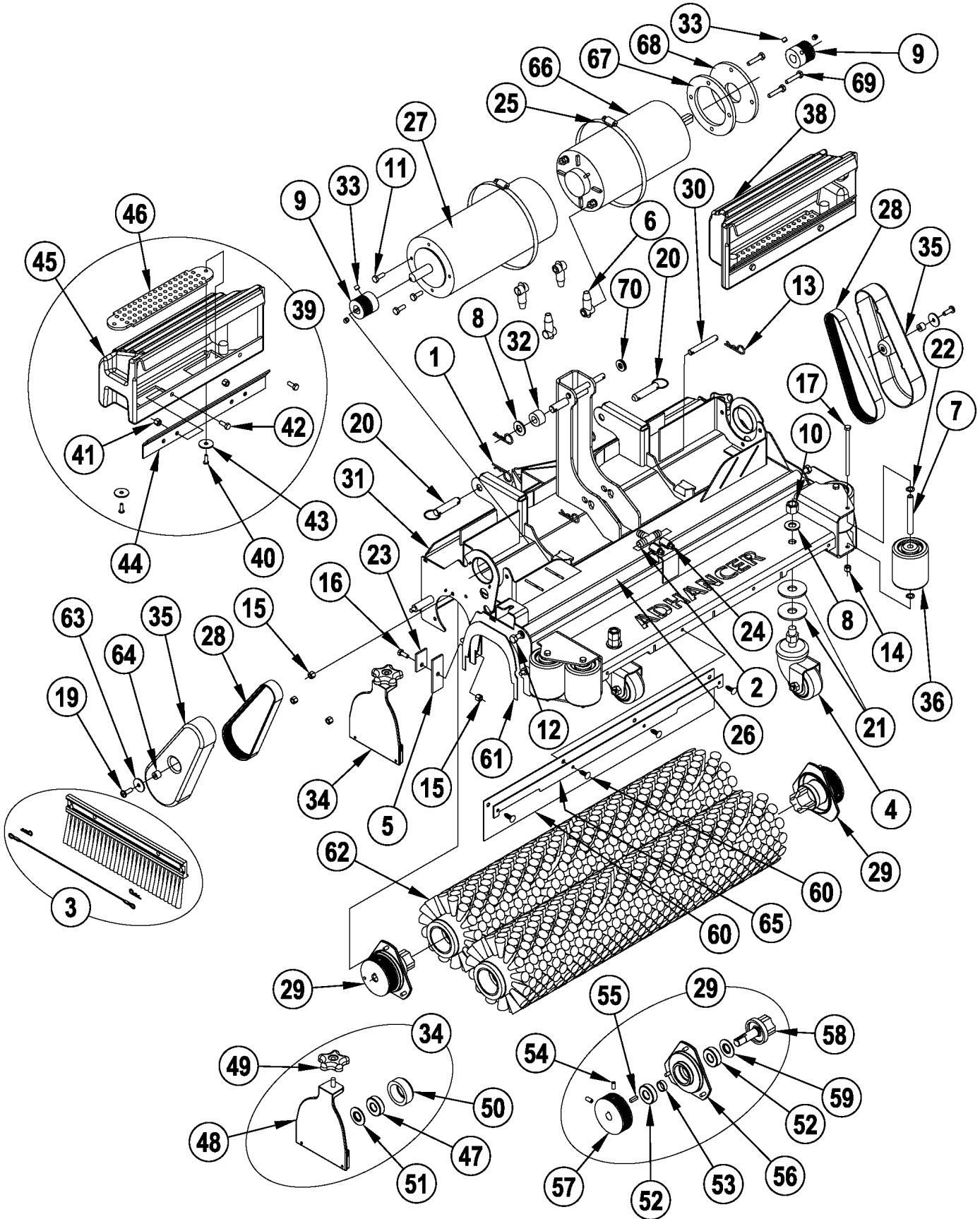
Item	Ref. No.	Qty	Description
1	56315694	1	Hinge
2	56412154	1	Gasket, Vacuum Duct
3	56001993	4	Scr, Pan Phil 10-24 X .50
4	56002053	4	Wsh, Flt STD #10
5	56002098	4	Wsh, Flt SAE 1/4
6	56002145	4	Scr, Pan Phil 1/4-20 X .50
7	56002849	2	Nut, Hex Nyl Loc-Thin Ss 10-24
8	56002896	2	Scr, Pan Phil SS 10-24 X .62
9	56002919	2	Wsh, Flt STD SS #10
10	56003003	1	Scr, Pan Phil 5/16-18 X .62
11	56009005	2	Scr, Pan Phil SS Type B 10-16 X .75
12	56305464	1	Plug, 3/4 Hex Pipe NOTE 1
13	56315406	1	Tank, Recovery
14	56315176	1	Cover, Recovery Tank
15	56315096	1	Switch, Electromagnetic
16	56315098	1	Gasket
17	56315099	1	Screen, Fan Inlet
18	56315102	1	Shroud, Vac Motor
19	56315141	3	Mount, Vibration
20	56315220	1	Gasket, Recovery Lid
21	56315257	1	Clamp, P
22	56315268	1	Vac Hose Assy.
23	56315272	1	Cable Assy
24	56315303	2	Retaining, Strap
25	56315346	1	Plate
26	56601405	1	Drain Hose NOTE 2
*	56601411	1	Drain Hose Cap Kit
*	56601413	1	Drain Hose kit NOTE 2
**	56601410	1	Drain Hose Extension
27	56391208	1	Vac Motor Assy (M4)
*	56377001	1	Carbon Brush Set of 2
28	56315375	1	Foam, Acoustical
**	56315597	1	Sound Reduction Kit
29	56440213	1	Clamp, Hose SAE #32
30	56456797	1	Clamp, Hose SAE #36
31	56477613	2	Tie, Cable

* = Not Shown

** = Optional (Not Included)

NOTE 1: Not used after March 2008.

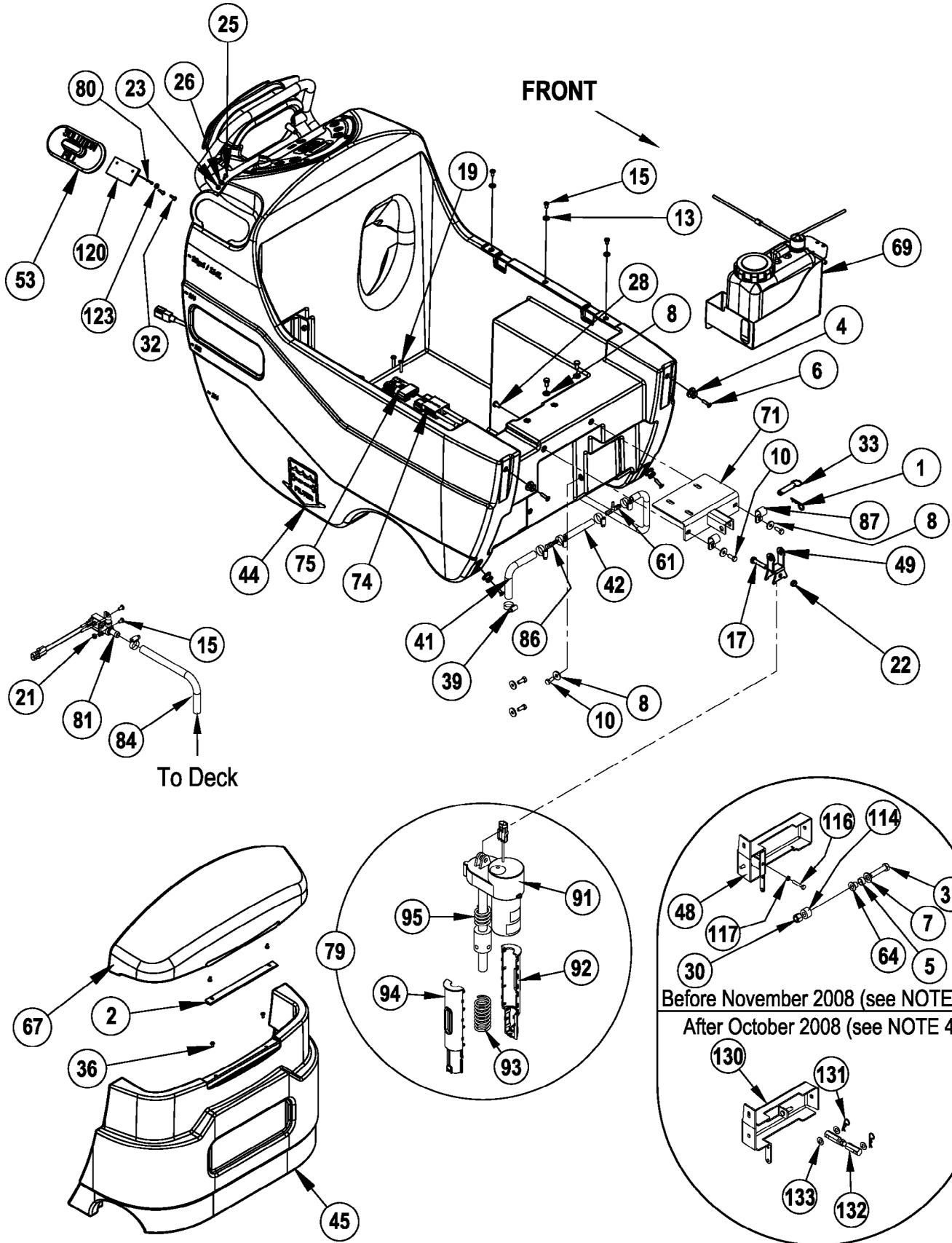
NOTE 2: Drain Hose 56315638 has been replaced by Drain Hose 56601405 in production. When replacing 56315638 you need to order Drain Hose Kit 56601413.



Item	Ref. No.	Qty	Description	Item	Ref. No.	Qty	Description
1	56002959	3	Pin, Cotter Hair NOTE 6	40	56002896	2	Scr, Pan Phil SS 10-24 x .62
2	56262549	1	Tee, Barb	41	56003426	2	Nut, Hex Nyl Loc SS M6-1
3	56316189	1	Side Skirt Kit NOTE 2	42	56003431	2	Scr, Hex Ss M6-1 x 16mm
4	56407344	3	Caster Wheel	43	56009060	2	Wsh, Flt SS .260 x 1.000 x .074
5	56407391	2	Blade	44	56316160	1	Hopper Bracket for 28"
6	56409538	4	Insulator, Terminal		56316161	1	Hopper Bracket for 32"
7	56412176	4	Bushing	45	56316163	1	Hopper, Right for 28"
8	56001879	3	Wsh, Flt SAE 1/2 NOTE 6		56316165	1	Hopper, Right for 32"
9	56002086	4	Scr, Soc Set Loc 5/16-18 x .25		56316162	1	Hopper, Left for 28"
10	56002770	3	Nut, Hex Nyl Loc 1/2-13		56316164	1	Hopper, Left for 32"
11	56002948	3	Scr, Hex Hd Loc 1/4-20 x .75 (qty of 6 after SN1979825)	46	56316166	1	Hopper Screen for 28"
					56316167	1	Hopper Screen for 32"
12	56002992	2	Scr, Hex SS 5/16-18 x .50	47	56106070	1	Bearing, Ball
13	56003120	2	Pin, Cotter Hair .0915 x .375	48	56316086	1	Idler Bearing Plate, Polished
14	56003403	4	Nut, Hex Nyl Loc M6-1	49	56396254	1	Knob
15	56003426	8	Nut, Hex Nyl Loc SS M6-1	50	56316175	1	Hub
16	56003431	2	Scr, Hex SS M6-1 x 16mm	51	56407558	1	Washer, Bearing
17	56003492	4	Scr, Hex M6-1 x 95mm	52	56106070	2	Bearing, Ball
19	56009126	2	Scr, Pan Phil Thd Form 1/4-20 x .75	53	56407389	1	Spacer
20	56003679	2	Pin, Ring .50 x 1.63	54	56002119	2	Scr, Soc Set Loc 1/4-20 x .50
21	56003739	6	Wsh, Flt Nylon .625 x 2.000 x .125	55	56003237	1	Key, Sq .19 x .62
22	56009045	8	Wsh, Bowed .375 x .578 x .060	56	56315405	1	Bearing Plate
23	56410214	2	Strap	57	56316054	1	Sheave, Poly-V
24	56112771	2	Clamp, Hose SAE #10	58	56316072	1	Spindle, Stainless
25	56355488	2	Clamp, Hose SAE #96	59	56407558	1	Washer, Bearing
26	56315355	2	Manifold, PVC 28"	60	56316187	1	Splash Guard Kit (for 28" deck) NOTE 3
	56315647	2	Manifold, PVC 32"		56316188	1	Splash Guard Kit (for 32" deck) NOTE 3
27	56316052	1	Motor, 36 Vdc, 1.25 HP, 3000 RPM TSBUS2006-951	61	56316191	2	Gasket
*	56315320	1	Harness, Brush	62	56316050	2	Adhancer Brushes for 28" NOTE 1
28	56316053	2	Belt, Auto Tension		56316051	2	Adhancer Brushes for 32" NOTE 1
29	56316057	2	Drive End Assy (items 52-59)	63	56009060	2	Wsh, Flt SS .260 x 1.000 x .074
30	56316059	1	Pin	64	56391840	2	Bushing .31 x .50 x .40
31	56316061	1	Housing, Weldment 28" NOTE 4	65	56316184	1	Retainer, Splash Guard (for 28" deck)
	56316199	1	Housing, Weldment 28" NOTE 5		56316185	1	Retainer, Splash Guard (for 32" deck)
	56316071	1	Housing, Weldment 32" NOTE 4	66	56315611	1	Motor, 36 Vdc, .75 HP, 1800 RPM TSBUS2006-951
	56316200	1	Housing, Weldment 32" NOTE 5	*	56315320	1	Harness, Brush
32	56316063	1	Bushing NOTE 6	67	56316197	1	Plate, Motor Spacer TSBUS2006-951 NOTE 4
33	56316066	2	Sheave, Poly-V	68	56316201	1	Plate, Motor Spacer TSBUS2006-951 NOTE 4
34	56316087	2	Idler End Assy, Polished (items 47-51)	69	56001878	3	Scr, Hex 1/4-20 x 1.25 TSBUS2006-951 NOTE 4
35	56316088	2	Cover, Belt	70	56002063	2	Wsh-Flt SAE 3/8 NOTE 7
36	56316089	4	Wheel				
38	56316168	1	Hopper Assy, Left for 28" (items 40-46)				
	56316170	1	Hopper Assy, Left for 32" (items 40-46)				
39	56316169	1	Hopper Assy, Right for 28" (items 40-46)				
	56316171	1	Hopper Assy, Right for 32" (items 40-46)				

* = Not Shown

NOTE 1: Cannot use any other brushes.**NOTE 2:** Side Skirt Kit includes; 2 bristle side skirts, 2 wire ropes and 4 cotter pins.**NOTE 3:** Splash Guard Kits include; Splash Guard and required number of Nylon Rivets.**NOTE 4:** Only used before SN1979826.**NOTE 5:** Only used after SN1979825.**NOTE 6:** As of October 2008 56316063 is no longer used in production and the quantities of 56001879 & 56002959 have been reduced by 1 each.**NOTE 7:** Only used after November 2008.



Item	Ref. No.	Qty	Description	Item	Ref. No.	Qty	Description
1	56002959	1	Pin, Cotter Hair	67	56315609	1	Cover, Chemical Tank
2	56302168	1	Hinge	68	56315634	1	Barb, Adaptor 3/4 X 1/2 Npt
3	56364527	1	Knob NOTE 2	69	56315645	1	Chemical Tank Assy
4	56365777	4	Lug, Brush Driver	70	56316121	1	Control Panel Assy TSBUS2006-951
5	56370878	1	Bearing, Sleeve NOTE 4	71	56315744	1	Weldment, Actuator Mount TSBUS2006-940
6	56001832	4	Scr, Flt Phil 1/4-20 X 1.00	72	56315683	1	Barb, 90 Elbow 3/4 X 3/8npt
7	56001879	1	Wsh, Flt SAE 1/2 NOTE 4	73	56315684	1	Assembly, Electrical Box (34, 100-111 & 121)
8	56009122	7	Wsh, Flt .344 X .938 X .125	74	56315686	1	Charge Connector Assy (to batteries)
9	56001954	7	Wsh, Flt SAE #10	75	56315687	2	Charge Connector Assy (to electrical box)
10	56002667	7	Scr, Hex 5/16-18 X .75	76	56331154	1	Clamp, Plastic
11	56002066	8	Scr, Pan Phil 1/4-20 X .62	77	56379139	1	Hose, PVC
12	56002094	4	Scr, Hex 5/16-18 X 1.50	78	56391802	1	Hose, Spiral .375
13	56002098	6	Wsh, Flt SAE 1/4	79	56109595	1	Lift Actuator Assembly (91-95) NOTE 7
14	56002124	10	Scr, Pan Phil 10-24 X .62	80	56410254	1	Wire Rope, 6 Inch TSBUS2007-967
15	56002145	7	Scr, Pan Phil 1/4-20 X .50	81	56397215	1	Solenoid Valve Assy, 36v
16	56002146	3	Scr, Pan Phil 8-32 X .62	83	56409152	1	Barb, 90 Elbow 1/2 X 1/2npt
17	56002684	1	Scr, Hex 3/8-16 X 1.75	84	56409462	1	Hose, Spiral .500
18	56002708	4	Nut, Hex Nyl Loc 1/4-20	86	56418669	1	Reducer, Barb
19	56002825	2	Scr, Pan Phil 1/4-20 X 1.25	87	56469380	2	Clamp, P
20	56002832	2	Nut, Hex Nyl Loc-Thin 10-24 NOTE 3	88	56486112	2	Clamp, P
21	56002840	2	Nut, Hex Nyl Loc-Thin 1/4-20 NOTE 2	89	56249682	1	Spiral, Hose X .375
22	56002841	1	Nut, Hex Nyl Loc-Thin 3/8-16	90	56219932	6	Clamp, Hose SAE #6
23	56002849	1	Nut, Hex Nyl Loc-Thin Ss 10-24	91	56109597	1	Actuator, Motor (M5)
25	56002896	1	Scr, Pan Phil SS 10-24 X .62	*	56109596	1	Plastic Nut
26	56002919	1	Wsh, Flt Std Ss #10	*	56109636	1	Spring Housing Kit
27	56002962	1	Scr, Soc Shd .38 X .62 X 5/16-18 NOTE 2	92	56109547	1	Spring Housing Bottom
28	56003003	1	Scr, Pan Phil 5/16-18 X .62	93	56420018	1	Compression Spring
29	56003266	1	Ring, Ret Ext Type E 0.75 Dia. NOTE 2	94	56109546	1	Spring Housing Top
30	56003312	1	Nut, Hex Nyl Loc M12-1.75 NOTE 4	95	56412071	1	Compression Spring
31	56003708	1	Scr, Hex M12-1.75 X 35mm NOTE 4	100	56009203	3	Stud, 1/4-20
32	56009006	2	Scr, Pan Phil SS Type B 10-16 X 1.00	101	56412089	1	Fuse, 150 Amp
33	56003679	1	Pin, Ring .50 X 1.63	102	56395455	1	Contacto 36v (K2 / Vac Motor)
34	56009030	2	Scr, Pan Phil Thd Form 10-24 X .38	103	56469858	3	Standoff, Insulated
36	56009139	4	Scr, Pan Phil Loc 10-24 X .38	104	56002462	7	Scr, Pan Phil 1/4-20 X .38
37	56009206	4	Scr, Truss Phil-Blk 10-24x.50	105	56002561	4	Nut, Hex W/ Shprf 1/4-20
38	56051207	1	Barb, Adapter 3/8 X 1/2 Npt	106	56003698	2	Scr, Pan Phil Thd Form 8-32 X .75
39	56219932	5	Clamp, Hose SAE #6	107	56315182	1	Panel, Electrical
40	56244969	1	Clamp, Hose SAE #12	108	56315692	1	Controller, Speed TSBUS2007-958
41	56262561	1	Hose, Spiral .500	109	56397250	1	Solenoid, Spdt 36v (K1 / Brush Motor)
42	56302015	1	Hose, Spiral .375	111	2-00-04203	4	Insulator, Terminal
43	56303553	1	Key Switch Assy (S3)	114	56315479	1	Bushing NOTE 4
*	56303526	A/R	Set of 2 Keys	116	56003709	1	Scr, Hex Thd to Hd 1/4-20 x 1.50 NOTE 4
44	56315733	1	Tank, Solution TSBUS2006-940	117	56009087	1	Nut, Hex Jam 1/4-20 NOTE 4
*	56109560	1	Solution Tank Kit NOTE 6	119	56249884	1	Plate
45	56315087	1	Nose Cone	120	56315166	1	Plate
46	56315108	1	Pump, Solution (M5)	121	56410166	1	Clamp, P
47	56315121	1	Guide, Cable	122	56001993	2	Scr, Pan Phil 10-24 x .50
48	56315736	1	Pivot Weld't. TSBUS2006-940 NOTE 4	123	56002916	2	Wsh, Flt SAE SS #10
49	56315191	1	Yoke, Actuator	124	56009030	3	Scr, Pan Phil Thd Form 10-24 X .38
50	56315193	2	Bushing, Flange NOTE 2	125	56396199	1	Clamp, Plastic
51	56315204	1	Charger, On-Board 36v NOTE 1	126	56315730	1	Lever, Squeegee Lift NOTE 2 / TSBUS2008-1021
			TSBUS2006-931 / TSBUS2007-979 / TSBUS2008-984	127	56003223	1	Pin, Cot Hair NOTE 2
			TSBUS2008-1003 / TSBUS2008-1008	128	56009117	1	Wsh, Flt 1.03 x 1.85 x .48 NOTE 2
*	56315747	1	Thermister Repair Kit for 56315204	129	56001854	1	Scr, Hex 1/4-20 x .50 NOTE 2
52	56315206	1	Bracket, Charger	130	56109524	1	Pivot Weldt. NOTE 4
53	56315219	1	Cover, Solution Fill TSBUS2007-967	131	56003120	2	Pin, Cotter Hair .0915 x .375 NOTE 4
54	56315222	1	Panel, Electrical NOTE 3	132	56315836	1	Turnbuckle Assy NOTE 4
55	56315236	1	Weldment, Squeegee Lift NOTE 2 / TSBUS2008-1021	133	56002063	3	Wsh, Flt SAE 3/8 NOTE 4
56	56315243	1	Cable Assy	134	56262561	1	Hose, Spiral .50
57	56315245	1	Bushing, Squeegee Cable NOTE 2	135	56002053	4	Wsh, Flt STD #10
58	56315255	1	Circuit Breaker, 5 Amp				
59	56315256	1	Circuit Breaker, 30 Amp				
60	56109553	1	Plate, Circuit Breaker NOTE 5				
61	56315265	1	Tee, Barb				
62	56315266	1	Assembly, Paddle TSBUS2007-958				
63	56315270	1	Charger Cord, US				
64	56315380	1	Bushing NOTE 4				
65	56315382	1	Clip, Conduit				

* = Not Shown

NOTE 1: Starting with Charger serial # CP360614027995 the charger software can be programmed with a computer and the QuiQ Programmer kit 56315732.

NOTE 2: As of serial number 2059967 the following items (56002962, 56364527, 56002840, 56003266, 56315193, 56315236 & 56315245) are no longer used in production. If you need to replace any of these items please order the following group of parts (56315730, 56009117, 56003223, 56001854 / items 126 through 129) in a quantity of 1 each.

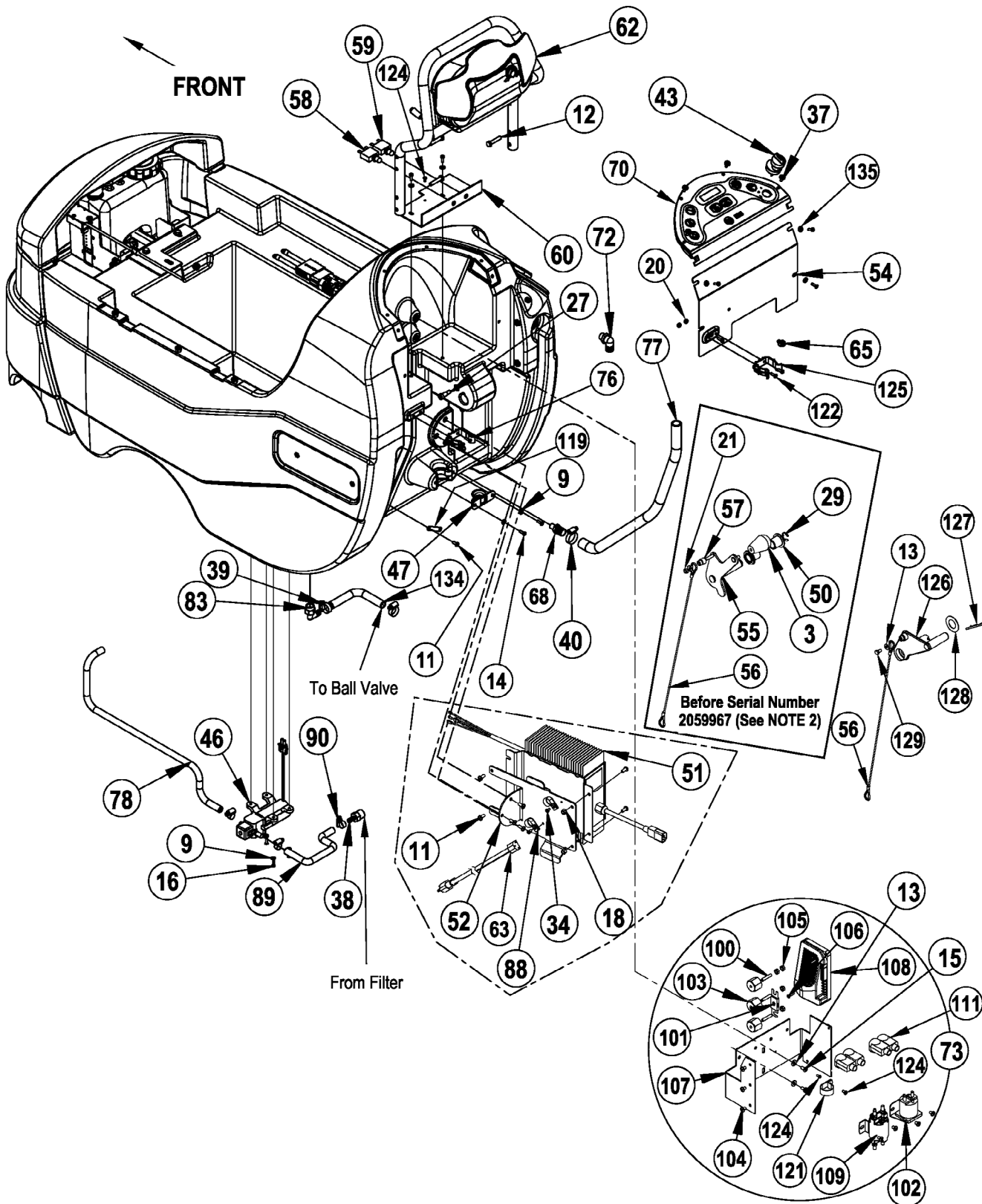
NOTE 3: As of serial number 2059967 the following items (56002832, 56315222 & 56412285) are no longer used in production. If you need to replace 56315222 or 56412285 please order 56109502.

NOTE 4: As of October 2008 the following items (56370878, 56001879, 56003312, 56003708, 56315736, 56315380, 56315479, 56003709, 56009087) are no longer used in production. If you need to replace any of these items please order Kit 56109540.

NOTE 5: 56315259 and 56315532 are no longer used in production. If you need to replace either of these items please order 56109553.

NOTE 6: If replacing the solution tank on a machine with the old style squeegee lift level (56315236), please order Solution Tank Kit 56109560.

NOTE 7: Actuator 56109595 replaces actuator 56396049 as of September 2009.



Item	Ref. No.	Qty	Description	Item	Ref. No.	Qty	Description
1	56002959	1	Pin, Cotter Hair	67	56315609	1	Cover, Chemical Tank
2	56302168	1	Hinge	68	56315634	1	Barb, Adaptor 3/4 X 1/2 Npt
3	56364527	1	Knob NOTE 2	69	56315645	1	Chemical Tank Assy
4	56365777	4	Lug, Brush Driver	70	56316121	1	Control Panel Assy TSBUS2006-951
5	56370878	1	Bearing, Sleeve NOTE 4	71	56315744	1	Weldment, Actuator Mount TSBUS2006-940
6	56001832	4	Scr, Flt Phil 1/4-20 X 1.00	72	56315683	1	Barb, 90 Elbow 3/4 X 3/8npt
7	56001879	1	Wsh, Flt SAE 1/2 NOTE 4	73	56315684	1	Assembly, Electrical Box (34, 100-111 & 121)
8	56009122	7	Wsh, Flt .344 X .938 X .125	74	56315686	1	Charge Connector Assy (to batteries)
9	56001954	7	Wsh, Flt SAE #10	75	56315687	2	Charge Connector Assy (to electrical box)
10	56002667	7	Scr, Hex 5/16-18 X .75	76	56331154	1	Clamp, Plastic
11	56002066	8	Scr, Pan Phil 1/4-20 X .62	77	56379139	1	Hose, PVC
12	56002094	4	Scr, Hex 5/16-18 X 1.50	78	56391802	1	Hose, Spiral .375
13	56002098	6	Wsh, Flt SAE 1/4	79	56109595	1	Lift Actuator Assembly (91-95) NOTE 7
14	56002124	10	Scr, Pan Phil 10-24 X .62	80	56410254	1	Wire Rope, 6 Inch TSBUS2007-967
15	56002145	7	Scr, Pan Phil 1/4-20 X .50	81	56397215	1	Solenoid Valve Assy, 36v
16	56002146	3	Scr, Pan Phil 8-32 X .62	83	56409152	1	Barb, 90 Elbow 1/2 X 1/2npt
17	56002684	1	Scr, Hex 3/8-16 X 1.75	84	56409462	1	Hose, Spiral .500
18	56002708	4	Nut, Hex Nyl Loc 1/4-20	86	56418669	1	Reducer, Barb
19	56002825	2	Scr, Pan Phil 1/4-20 X 1.25	87	56469380	2	Clamp, P
20	56002832	2	Nut, Hex Nyl Loc-Thin 10-24 NOTE 3	88	56486112	2	Clamp, P
21	56002840	2	Nut, Hex Nyl Loc-Thin 1/4-20 NOTE 2	89	56249682	1	Spiral, Hose X .375
22	56002841	1	Nut, Hex Nyl Loc-Thin 3/8-16	90	56219932	6	Clamp, Hose SAE #6
23	56002849	1	Nut, Hex Nyl Loc-Thin Ss 10-24	91	56109597	1	Actuator, Motor (M5)
25	56002896	1	Scr, Pan Phil SS 10-24 X .62	*	56109636	1	Spring Housing Kit
26	56002919	1	Wsh, Flt Std Ss #10	92	56109547	1	Spring Housing Bottom
27	56002962	1	Scr, Soc Shd .38 X .62 X 5/16-18 NOTE 2	93	56420018	1	Compression Spring
28	56003003	1	Scr, Pan Phil 5/16-18 X .62	94	56109546	1	Spring Housing Top
29	56003266	1	Ring, Ret Ext Type E 0.75 Dia. NOTE 2	95	56412071	1	Compression Spring
30	56003312	1	Nut, Hex Nyl Loc M12-1.75 NOTE 4	100	56009203	3	Stud, 1/4-20
31	56003708	1	Scr, Hex M12-1.75 X 35mm NOTE 4	101	56412089	1	Fuse, 150 Amp
32	56009006	2	Scr, Pan Phil SS Type B 10-16 X 1.00	102	56395455	1	Contacter 36v (K2 / Vac Motor)
33	56003679	1	Pin, Ring .50 X 1.63	103	56469858	3	Standoff, Insulated
34	56009030	2	Scr, Pan Phil Thd Form 10-24 X .38	104	56002462	7	Scr, Pan Phil 1/4-20 X .38
36	56009139	4	Scr, Pan Phil Loc 10-24 X .38	105	56002561	4	Nut, Hex W/ Shprf 1/4-20
37	56009206	4	Scr, Truss Phil-Blk 10-24x.50	106	56003698	2	Scr, Pan Phil Thd Form 8-32 X .75
38	56051207	1	Barb, Adapter 3/8 X 1/2 Npt	107	56315182	1	Panel, Electrical
39	56219932	5	Clamp, Hose SAE #6	108	56315692	1	Controller, Speed TSBUS2007-958
40	56244969	1	Clamp, Hose SAE #12	109	56397250	1	Solenoid, Spdt 36v (K1 / Brush Motor)
41	56262561	1	Hose, Spiral .500	111	2-00-04203	4	Insulator, Terminal
42	56302015	1	Hose, Spiral .375	114	56315479	1	Bushing NOTE 4
43	56303553	1	Key Switch Assy (S3)	116	56003709	1	Scr, Hex Thd to Hd 1/4-20 x 1.50 NOTE 4
*	56303526	A/R	Set of 2 Keys	117	56009087	1	Nut, Hex Jam 1/4-20 NOTE 4
44	56315733	1	Tank, Solution TSBUS2006-940	119	56249884	1	Plate
*	56109560	1	Solution Tank Kit NOTE 6	120	56315166	1	Plate
45	56315087	1	Nose Cone	121	56410166	1	Clamp, P
46	56315108	1	Pump, Solution (M5)	122	56001993	2	Scr, Pan Phil 10-24 x .50
47	56315121	1	Guide, Cable	123	56002916	2	Wsh, Flt SAE SS #10
48	56315736	1	Pivot Weld't. TSBUS2006-940 NOTE 4	124	56009030	3	Scr, Pan Phil Thd Form 10-24 X .38
49	56315191	1	Yoke, Actuator	125	56396199	1	Clamp, Plastic
50	56315193	2	Bushing, Flange NOTE 2	126	56315730	1	Lever, Squeegee Lift NOTE 2 / TSBUS2008-1021
51	56315204	1	Charger, On-Board 36v NOTE 1	127	56003223	1	Pin, Cot Hair NOTE 2
			TSBUS2006-931 / TSBUS2007-979 / TSBUS2008-984	128	56009117	1	Wsh, Flt 1.03 x 1.85 x .48 NOTE 2
			TSBUS2008-1003 / TSBUS2008-1008	129	56001854	1	Scr, Hex 1/4-20 x .50 NOTE 2
			Thermister Repair Kit for 56315204	130	56109524	1	Pivot Weldt. NOTE 4
52	56315206	1	Bracket, Charger	131	56003120	2	Pin, Cotter Hair .0915 x .375 NOTE 4
53	56315219	1	Cover, Solution Fill TSBUS2007-967	132	56315836	1	Turnbuckle Assy NOTE 4
54	56315222	1	Panel, Electrical NOTE 3	133	56002063	3	Wsh, Flt SAE 3/8 NOTE 4
55	56315236	1	Weldment, Squeegee Lift NOTE 2 / TSBUS2008-1021	134	56262561	1	Hose, Spiral .50
56	56315243	1	Cable Assy	135	56002053	4	Wsh, Flt STD #10
57	56315245	1	Bushing, Squeegee Cable NOTE 2				
58	56315255	1	Circuit Breaker, 5 Amp				
59	56315256	1	Circuit Breaker, 30 Amp				
60	56109553	1	Plate, Circuit Breaker NOTE 5				
61	56315265	1	Tee, Barb				
62	56315266	1	Assembly, Paddle TSBUS2007-958				
63	56315270	1	Charger Cord, US				
64	56315380	1	Bushing NOTE 4				
65	56315382	1	Clip, Conduit				

* = Not Shown

NOTE 1: Starting with Charger serial # CP360614027995 the charger software can be programmed with a computer and the QuiQ Programmer kit 56315732.

NOTE 2: As of serial number 2059967 the following items (56002962, 56364527, 56002840, 56003266, 56315193, 56315236 & 56315245) are no longer used in production. If you need to replace any of these items please order the following group of parts (56315730, 56009117, 56003223, 56001854 / items 126 through 129) in a quantity of 1 each.

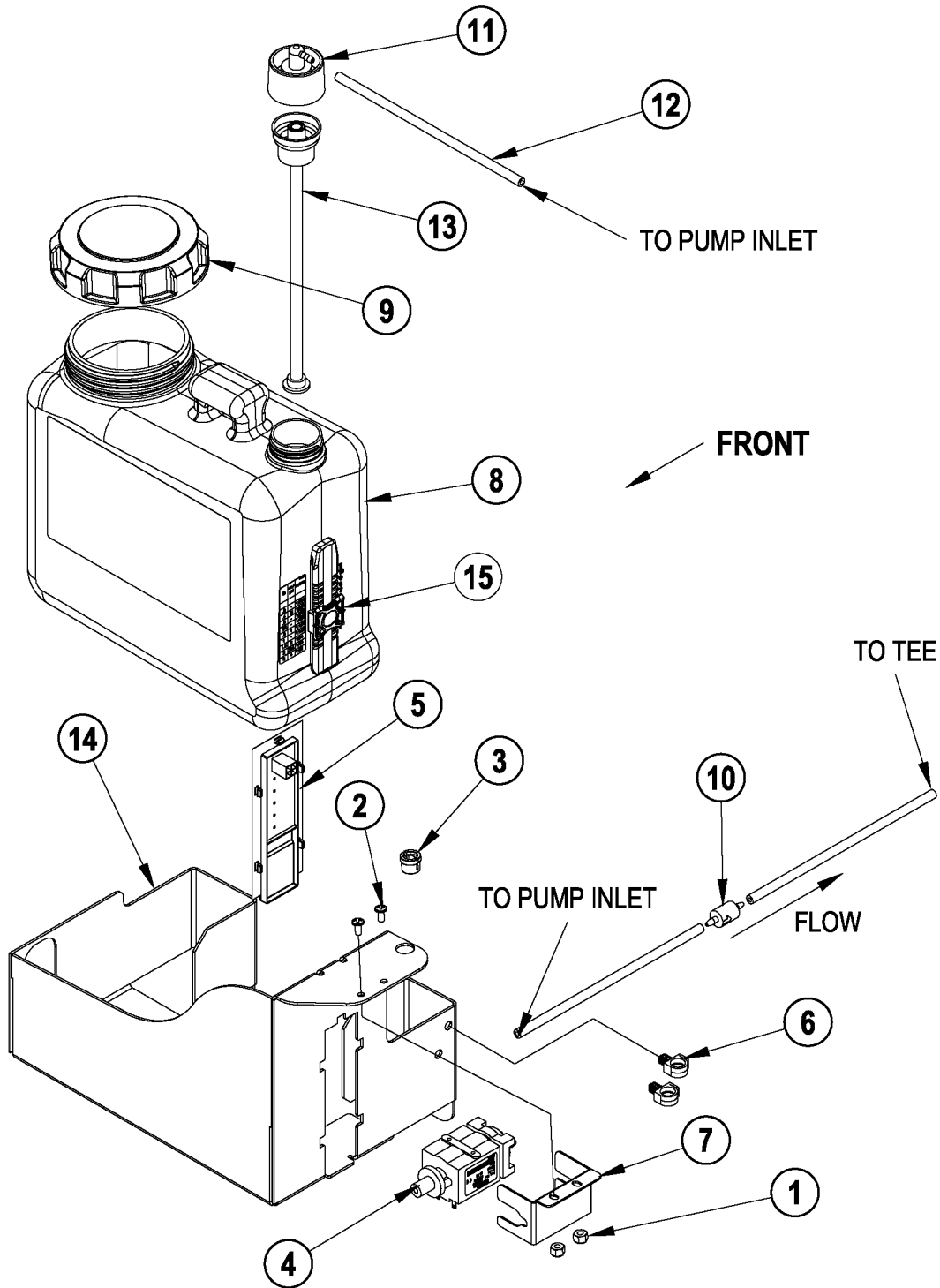
NOTE 3: As of serial number 2059967 the following items (56002832, 56315222 & 56412285) are no longer used in production. If you need to replace 56315222 or 56412285 please order 56109502.

NOTE 4: As of October 2008 the following items (56370878, 56001879, 56003312, 56003708, 56315736, 56315380, 56315479, 56003709, 56009087) are no longer used in production. If you need to replace any of these items please order Kit 56109540.

NOTE 5: 56315259 and 56315532 are no longer used in production. If you need to replace either of these items please order 56109553.

NOTE 6: If replacing the solution tank on a machine with the old style squeegee lift level (56315236), please order Solution Tank Kit 56109560.

NOTE 7: Actuator 56109595 replaces actuator 56396049 as of September 2009.



06-3

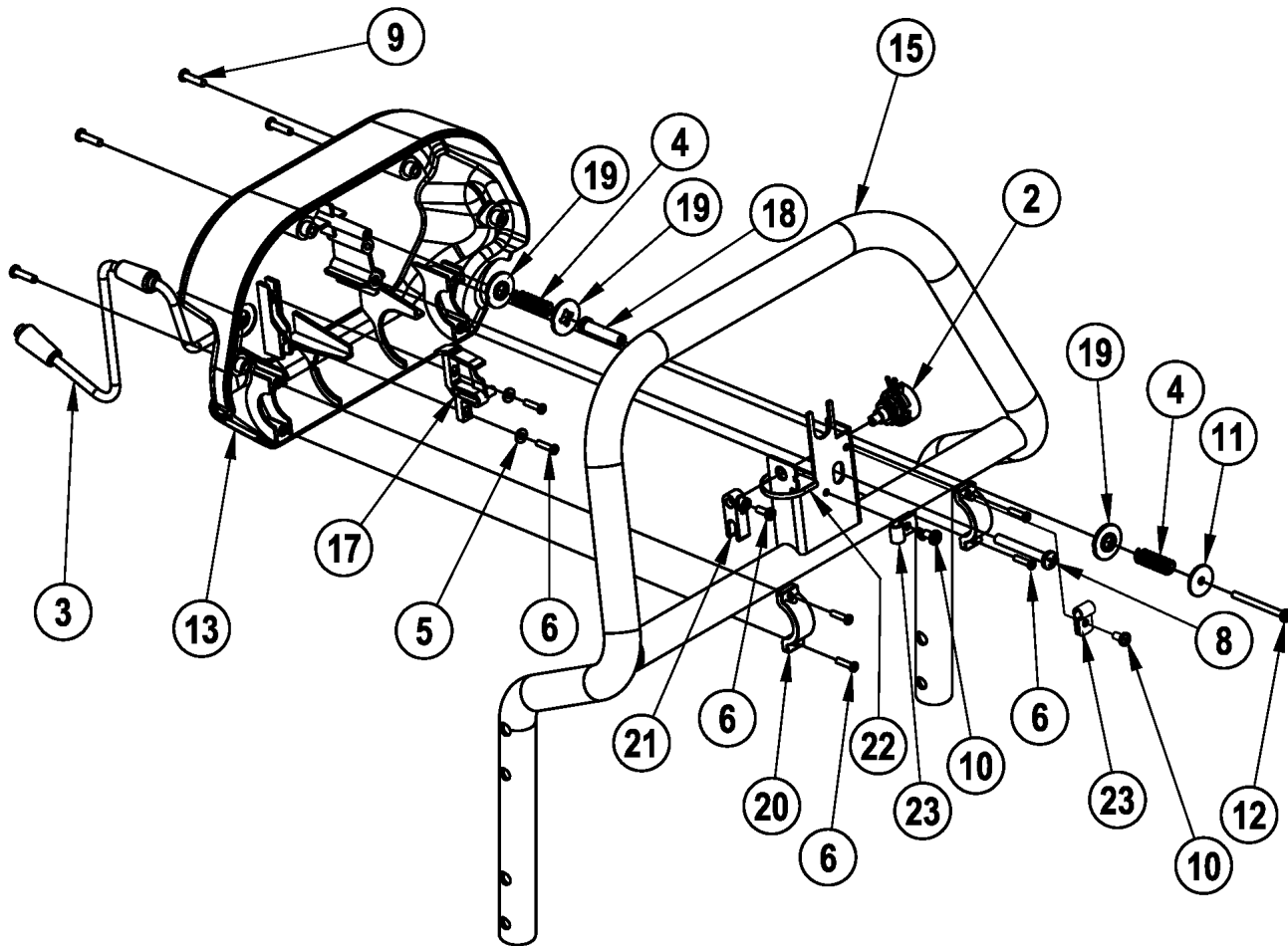
CHEMICAL ASSEMBLY (AXP / EDS)

08-11

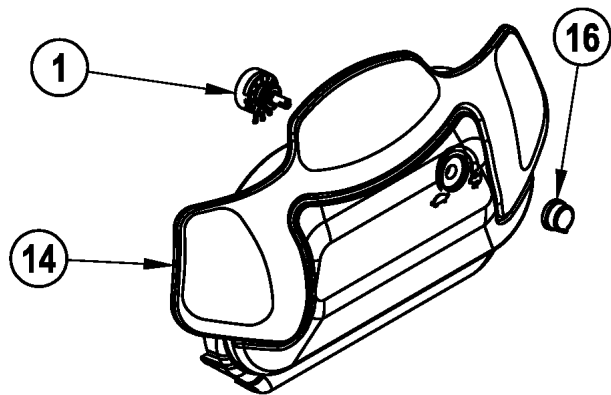
Adhancer™**17**

Item	Ref. No.	Qty	Description
	56315645	1	Chemical Tank Assy
1	56002877	2	Nut, Hex Nyl Loc SS 8-32
2	56003018	2	Scr, Pan Phil SS 8-32 x .38
3	56003699	1	Bushing, 1/4 ID Snub
4	56315241	1	Pump, Chemical
5	56315340	1	Chemical Sensor Assy
6	56315382	2	Clip, Conduit
7	56315476	1	Bracket, Chemical Pump
8	56315502	1	Chemical Bottle As
**	56315503	A/R	Chemical Bottle Assy (8, 9, 13)
9	56315517	1	Cap, Raw
10	56315522	1	Check Valve, 1/8 Barb, 125 PSI
11	56315523	1	Cap, Dry Break, 1/8 Barb, 90°
12	56315524	3	Hose, Chemical Resistant, 7"
13	56315527	1	Insert, Dry Break
14	56315644	1	Bracket, Tank Mounting
15	56315511	1	Indicator Assy

** = Optional, Not Included



FRONT



06-3

PADDLE ASSEMBLY

09-11

Adhancer™**19**

Item	Ref. No.	Qty	Description
	56315266	1	Assembly, Paddle
1	56396197	1	Potentiometer, 100k (R2)
2	56397029	1	Potentiometer, 5k (R1)
3	56315231	1	Harness, Handle
4	56325654	2	Spring, Compression
5	56002006	2	Wsh, Flt SAE #6
6	56003197	7	Scr, Pan Phil Plastite 6-18 x .62
8	56003527	1	Scr, Pan Phil Plastite 1/4-10 x 2.00
9	56003545	4	Scr, Pan Phil Plastite 8-10 x .75
10	56009030	2	Scr, Pan Phil Thd Form 10-24 x .38
11	56009096	1	Wsh, Flt .193 x .875 x .060
12	56009287	1	Scr, Pan Phil Type B 8 x 2.00
13#	56109716	1	Paddle, Back Cover
14	56315230	1	Paddle, Front Cover
15	56315251	1	Weldment, Handle Bar
16	56315280	1	Knob
17	56397015	1	Cam Controller
18	56397109	1	Sleeve
19	56397170	3	Washer, Plastic
20	56397171	2	Clamp
21	56109648	1	Potentiometer Fork
22	56478246	1	Tie, Cable
23	56481890	2	Clamp, P

= Revised or new since last update

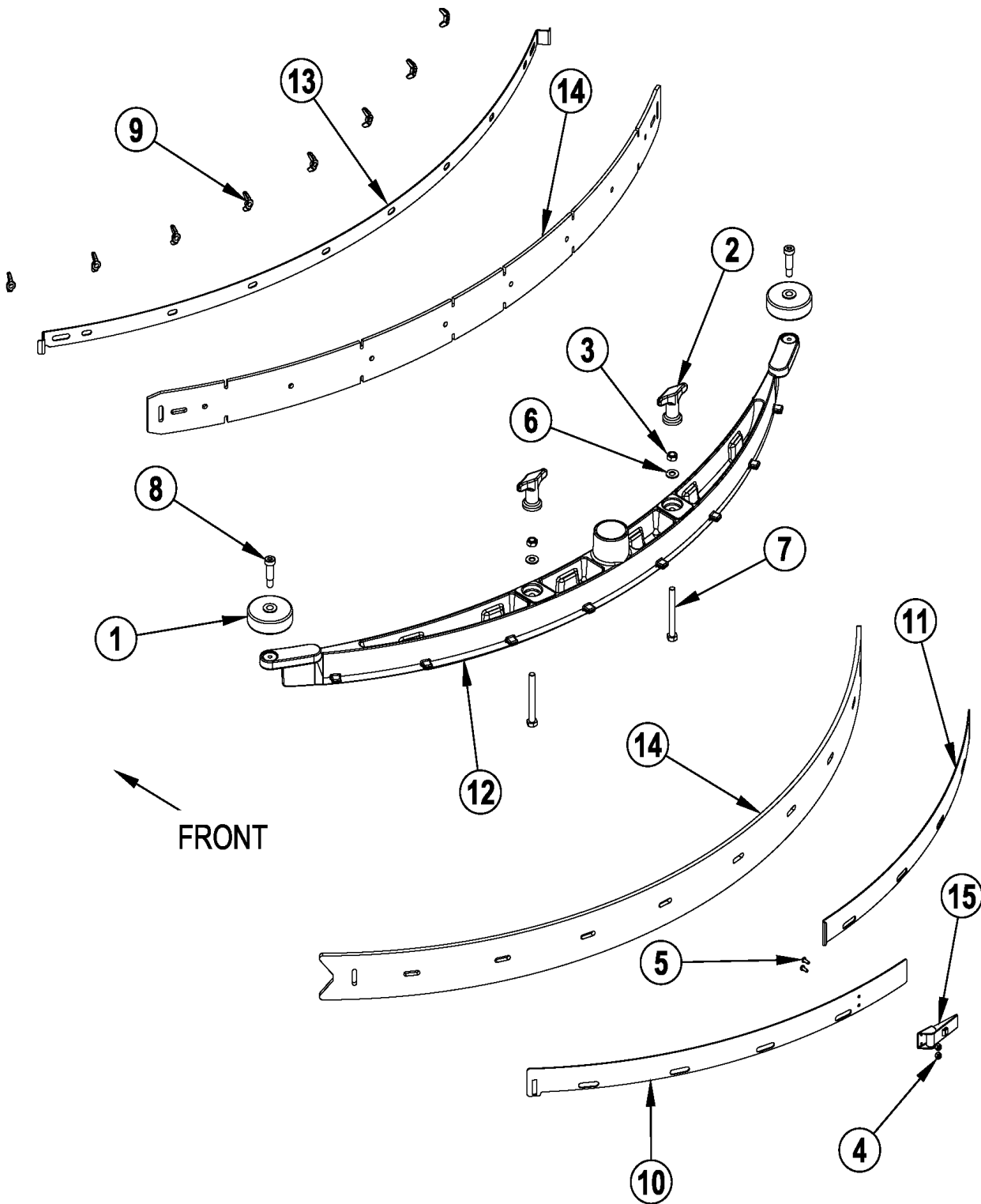
SQUEEGEE ASSEMBLY

06-3

20

Adhancer™

09-7

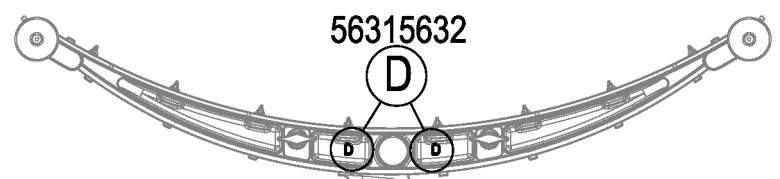
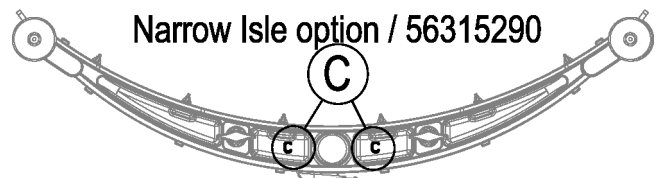
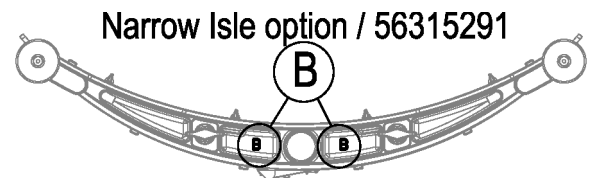


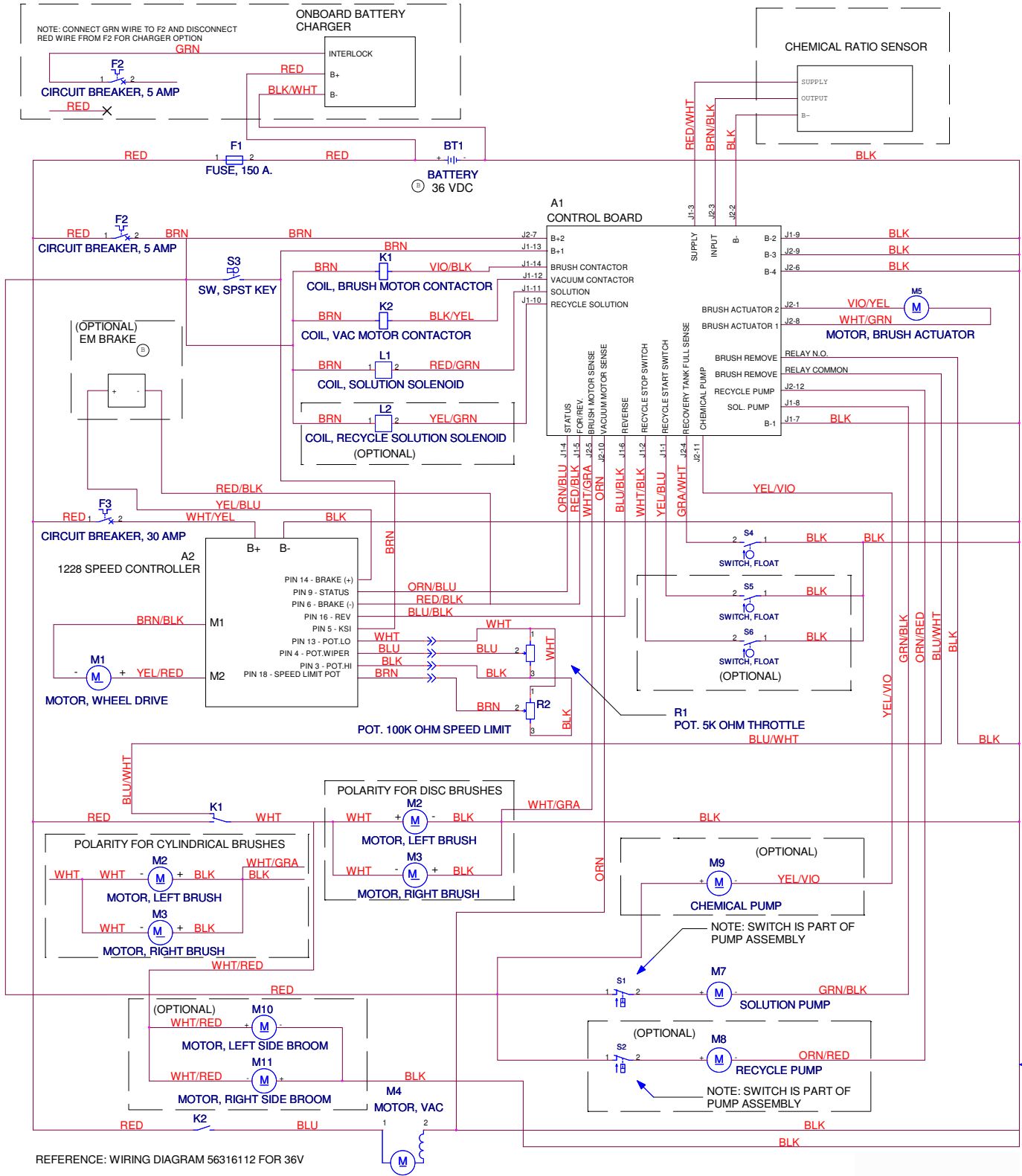
Item	Ref. No.	Qty	Description
	56315632	1	Squeegee Assembly "D" NOTE 2
	56315290	1	Squeegee Assembly "C" NOTE 2 (Narrow Isle Option)
	56315291	1	Squeegee Assembly "B" NOTE 2 (Narrow Isle Option)
1	56324350	2	Wheel
2	56370711	2	Nut, Thumb
3	56002851	2	Nut, Hex Nyl Loc-Thin SS 5/16-18
4	56002907	2	Nut, Hex Nyl Loc SS 6-32
5	56002909	2	Scr, Pan Phil SS 6-32 x .38
6	56002938	2	Wsh, Flt Sae SS 5/16
7	56003736	2	Scr, Hex Thd to Hd SS 5/16-18 x 3.00
8	56003472	2	Scr, Soc Shd .38 x 1.00 x 5/16-18
9	56009111	8	Nut, Wing SS 1/4-20
10	56109667	1	Strap-Left Rear "D" (used on 56315632) NOTE 2
	56109664	1	Strap-Left Rear "C" (used on 56315290) NOTE 2
	56109660	1	Strap-Left Rear "B" (used on 56315291) NOTE 2
11	56109668	1	Strap-Right Rear "D" (used on 56315632) NOTE 2
	56109665	1	Strap-Right Rear "C" (used on 56315290) NOTE 2
	56109661	1	Strap-Right Rear "B" (used on 56315291) NOTE 2
12	56314694	1	Squeegee Tool, Cast "D" (used on 56315632)
	56314325	1	Squeegee Tool, Cast "C" (used on 56315290)
	56314271	1	Squeegee Tool, Cast "B" (used on 56315291)
13	56314696	1	Strap, Front "D" (used on 56315632)
	56314322	1	Strap, Front "C" (used on 56315290)
	56314028	1	Strap, Front "B" (used on 56315291)
14	56315674	1	Kit, Gum Rubber Squeegee Blade "D" (used on 56315632) NOTE 1
	56315348	1	Kit, Gum Rubber Squeegee Blade "C" (used on 56315290) NOTE 1
	56315347	1	Kit, Gum Rubber Squeegee Blade "B" (used on 56315291) NOTE 1
15	56471194	1	Latch Assembly
			"D" Squeegee Blade Kits for 56315632
**	56315674	1	Kit, Gum Rubber Squeegee Blade "D" NOTE 1
**	56314865	1	Kit, Linatex Squeegee Blade "D" NOTE 1
**	56315856	1	Kit, PU Squeegee Blade "D" NOTE 1
			"C" Squeegee Blade Kits for 56315290
**	56315348	1	Kit, Gum Rubber Squeegee Blade "C" NOTE 1
**	56315352	1	Kit, Linatex Squeegee Blade "C" NOTE 1
**	56315855	1	Kit, PU Squeegee Blade "C" NOTE 1
			"B" Squeegee Blade Kits for 56315291
**	56315347	1	Kit, Gum Rubber Squeegee Blade "B" NOTE 1
**	56315351	1	Kit, Linatex Squeegee Blade "B" NOTE 1
**	56315854	1	Kit, PU Squeegee Blade "B" NOTE 1

** = Optional, Not Included

NOTE 1: All squeegee blade kits include both front and rear squeegee blades.

NOTE 2: To replace all squeegee straps as a set order one of the three following Strap Kits:
 56109669-Strap Kit-D (for Squeegee Assy 56315632)
 56109666-Strap Kit-C (for Squeegee Assy 56315290)
 56109662-Strap Kit-B (for Squeegee Assy 56315291)
 These kits include both rear straps, front strap and the latch.





Item	Ref. No.	Qty	Description
A1	56316121	1	Control Panel Assy TSBUS2006-951
A2	56315692	1	Speed Control
BT1	NA	6	Battery
F1	56412089	1	Fuse, 150 Amp
F2	56315255	1	Circuit Breaker, 5 Amp
F3	56315256	1	Circuit Breaker, 30 Amp
K1	56397250	1	Contactora, Brush Motor
K2	56395455	1	Contactora, Vac Motor
L1	56397215	1	Solenoid, Solution
L2	56397215	1	Solenoid, Recycle Solution (Optional)
M1	56315063	1	Transaxle, 36V
*	56315676	1	Motor
*	56315677	4	Carbon Brush
*	56315678	2	Neoprene Mounting Sleeve
M2	56316052	1	Motor, Left Brush 36 VDC, 1.25 HP, 3000 RPM
*	56412287	1	Brush / Spring Kit
M3	56316052	1	Motor, Right Brush 36 VDC, 1.25 HP, 3000 RPM
*	56412287	1	Brush / Spring Kit
M4	56391208	1	Vac Motor Assy
*	56377001	1	Carbon Brush Set of 2
M5	56393303	1	Motor, Brush Actuator
*	56388520	1	Plastic Nut
M7	56315108	1	Pump, Solution
M8	56315107	1	Pump, Recycle (Optional)
M9	56315241	1	Pump, Chemical
R1	56397029	1	Potentiometer, 5K Ohm, Throttle
R2	56396197	1	Potentiometer, 100K Ohm, Speed Limit
S1	NA	1	Part of M7
S2	NA	1	Part of M8
S3	56303553	1	Switch, Key
*	56303526	A/R	Set of 2 Replacement Keys
S4	56315096	1	Switch, Float
S5	56315096	1	Switch, Float (Optional / Recycle Start)
S6	56315096	1	Switch, Float (Optional / Recycle Stop)
*	56315204	1	Charger, Onboard 36V NOTE 1 TSBUS2006-931 / TSBUS2007-979 / TSBUS2008-984 TSBUS2008-1003 / TSBUS2008-1008
*	56315340	1	Chemical Ratio Sensor
*	56316100	1	Harness, Main
*	56416445	3	Cable Assy 4 AWG (Battery Cables)
*	56456460	2	Cable Assy 4 x 12 (Battery Cables)
*	56372673	12	Boot, Battery Post
*	56478523	2	Tie, Cable
*	56478246	9	Tie, Cable
*	56314119	2	Spacer, Battery

* = Not Shown

NOTE 1: Starting with Charger serial # CP360614027995 the charger software can be programmed with a computer and the QuiQ Programmer kit 56315732.

OPTIONAL KIT & ACCESSORIES

06-3

24

Adhancer™

08-11

Ref. No. Qty Description

Options

**	56315312	A/R	Squeegee Wand Kit
**	56315681	A/R	Kit, Electromagnetic Brake
**	56315597	A/R	Kit, Sound Reduction
**	56314981	A/R	Battery Watering Kit
**	56315732	A/R	QuiQ Programmer Kit NOTE 3 / TSBUS2007-979
**	9096219000	2	Wheel, Polyurethane - Traction
**	56315669	A/R	Kit, 28" Disk Deck Assy
**	56315670	A/R	Kit, 32" Disk Deck Assy
**	56315671	A/R	Kit, 28" Cyl Deck Assy
**	56315672	A/R	Kit, 32" Cyl Deck Assy
**	56316073	A/R	Kit-Adhancer deck Assy 28
**	56316074	A/R	Kit-Adhancer deck Assy 32

"D" Squeegee Blade Kits for 56315632

**	56315674	1	Kit, Gum Rubber Squeegee Blade "D" NOTE 1
**	56314865	1	Kit, Linatex Squeegee Blade "D" NOTE 1
**	56315856	1	Kit, PU Squeegee Blade "D" NOTE 1

"C" Squeegee Blade Kits for 56315290

**	56315348	1	Kit, Gum Rubber Squeegee Blade "C" NOTE 1
**	56315352	1	Kit, Linatex Squeegee Blade "C" NOTE 1
**	56315855	1	Kit, PU Squeegee Blade "C" NOTE 1

"B" Squeegee Blade Kits for 56315291

**	56315347	1	Kit, Gum Rubber Squeegee Blade "B" NOTE 1
**	56315351	1	Kit, Linatex Squeegee Blade "B" NOTE 1
**	56315854	1	Kit, PU Squeegee Blade "B" NOTE 1

Accessories

**	56315316	A/R	Tote Bag
**	56397453	6	Indicator, Battery Level (1 per battery)
**	56409441	A/R	Programmer, 1307 User
**	56409823	A/R	Programmer Cable
**	56044385	A/R	Literature Pack

Optional Batteries

**	56391391	6	Battery, 6v 305 A/H Wet
**	56206987	6	Battery, 6v 180A/H Gel
**	56315959	6	Battery, 6v 315 A/H AGM
**	56315772	6	Battery, 6v 255 A/H Sealed

Optional Battery Chargers

**	56388120	1	Charger, 36vdc Auto 36 Amp 120vac/60hz
**	56372190	1	Charger, 36vdc 20 Amp 230vac/50hz
**	56388119	1	Charger, 36vdc 36 Amp 230vac/50hz

Replacement Brushes (use only these)

	56316050	2	Adhancer Brushes for 28"
	56316051	2	Adhancer Brushes for 32"

** = Optional, Not Included

NOTE 1: All squeegee blade kits include both front and rear squeegee blades.

NOTE 2: Replacement parts for the kits listed above can be found on each kit's associated instruction sheet.

NOTE 3: Starting with Charger serial # CP360614027995 the charger software can be programmed with a computer and the QuiQ Programmer kit 56315732.



**Nilfisk
Advance**

setting standards

Nilfisk-Advance, Inc.
14600 21st Avenue North
Plymouth, MN 55447-3408
www.nilfisk-advance.com
Phone: 800-989-2235
Fax: 800-989-6566
©2009 Nilfisk-Advance, Inc.