

Kleen Sweep® 35W

Walk Behind Sweeper



The KS 35W is great on hard or soft floor surfaces.



Minuteman®

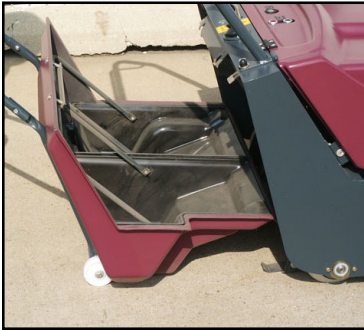
Minuteman Kleen Sweep® 35W Walk Behind Sweeper

Versatile Performer

The KS 35W is a 34" walk behind sweeper with excellent sweeping performance on all types of floors including carpet and hard floors. The KS 35W is extremely economical, easy to operate and gives you dust-free sweeping at 36,600 actual square feet per hour.

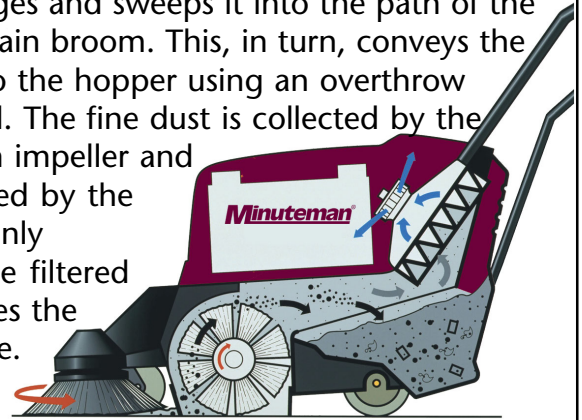
Large Capacity

The 1.66 cubic foot hopper recovers a large variety of debris. Since the KS 35W uses an over-throw sweeping method, the hoppers can be filled to 100% capacity. The hopper is easily removed by rolling it away from the main unit. The debris can be easily emptied using the two ergonomic handy hopper inserts.



Working Method

The side brush collects dirt from the corners and edges and sweeps it into the path of the wide main broom. This, in turn, conveys the dirt into the hopper using an overthrow method. The fine dust is collected by the vacuum impeller and separated by the filter. Only dust-free filtered air leaves the machine.

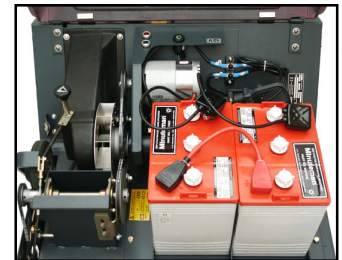


High Efficiency Dust Filter System

The large 18.3 cubic foot panel filter system captures fine dust and drops it directly into the hopper. This system provides longer dust-free sweeping. The dust vacuum suction can be shut off when sweeping wet areas so that the filter isn't damaged or clogged.

Easy Maintenance

Heavy-duty ABS cover opens wide for easy access to interior components. The cover has an automatic shut off for safety.



Batteries	(2) 6 volt 275 AH Batteries
Area Performance	36,600 actual square feet per hour
Sweeping width	34"
Drive	Variable forward drive
Safety	Automatic stop activated by simply releasing the lever. Safety switch on cover.
Main Broom	Wide main broom with bristles arranged in 1" rows. Sweeping level/path can be adjusted without the use of additional tools.
Dust filter	18.3 cubic feet, pleated one piece filter
Dirt hopper	1.66 cubic feet
Length with side brush	54"
Width with side brush	34"
Height	40"
Weight with batteries	269 LBS

World Headquarters
Minuteman International, Inc.
 111 South Rohlwing Road
 Addison, IL 60101-4244
 Telephone: (630) 627-6900
 Fax: (630) 627-1130
www.minutemanintl.com

Minuteman Canada, Inc.
 2210 Drew Road
 Mississauga, Ontario Canada L5S 1B1
 Telephone: (905) 673-3222
 FAX: (905) 673-5161

Minuteman®