



Electronic Service Manuals

This electronic document is provided as a service to our customers. We do not create the contents of the information contained in this document. Should you have detailed questions pertaining to the information contained in this document, you may contact Michco, or the manufacturer which provided the original information in this electronic deliverable. Michco's only part in this electronic deliverable was the electronic assembly process.

You may contact Michco through the following methods:
Phone (517) 484-9312 or (800) 331-3339 MI, OH, IN only
2011 N. High St. -- Lansing, Michigan -- 48906
Fax: (517) 484-9836
Email: CustServ@Michco.com
Web site: www.Michco.Com
Parts Web site: www.FloorMachineParts.Com

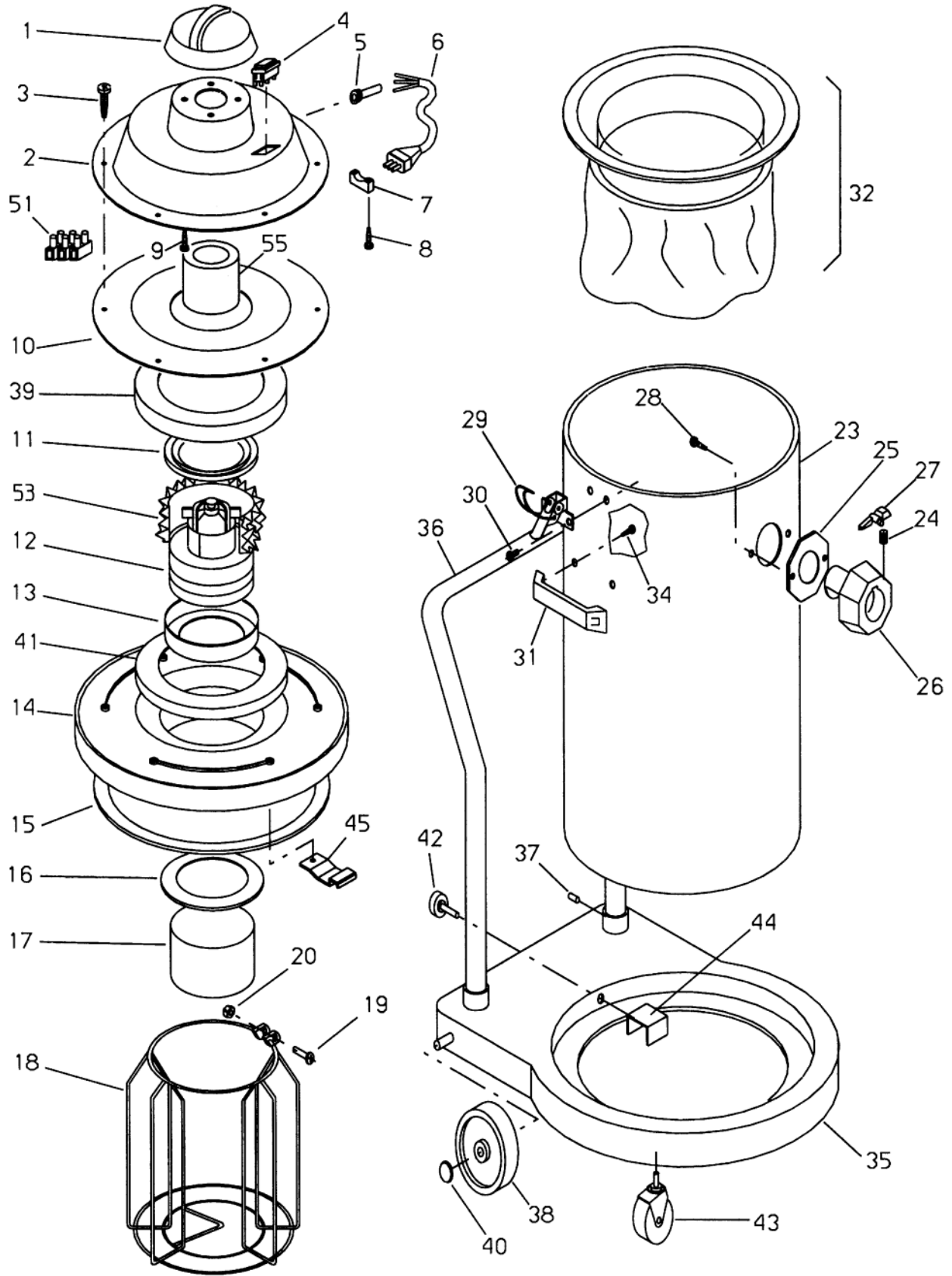
Order Parts on Line at:
www.FloorMachineParts.Com

Directly to Parts & Service:
By Email: **Shop@Michco.com**
By Fax: (517) 702-2041
By Voice: Use numbers above.

Serving the Cleaning Industry Since 1922

Notice: All copyrighted material remains property of original owners, all trademarks are property of respective owners. Manuals are subject to Manufacturer's reproduction limitations. Originals or reproductions were provided by manufacturers through a request. We make no warranty as to the correctness of information provided in this document and you assume all risk.

GULPER 12SS



GULPER 12SS PARTS LIST

ITEM	PART NO.	DESCRIPTION	QTY.
1	601540	Cover	1
2	602340	Cap, Motor	1
3	964020	Screw	8
4	608010	Switch	1
5	608511	Strain Relief	1
6	908020	Cord Assembly	1
7	602009	Clamp, Cord	1
8	964165	Screw	2
9	964025	Screw	4
10	600214	Adaptor	1
11	603414	Gasket	1
12	605210	Motor - Vacuum, 115V	1
	605211	Motor - Vacuum, 230V	1
	600903	Brush, Carbon for 605210 & 605211 (2 req'd/mtr)	2
13	603410	Gasket	1
14	600215	Adaptor, Lower Motor	1
15	603442	Gasket, Dome	1
16	603412	Gasket, Float	1
17	603312	Float	1
18	602413	Cage	1
19	964139	Screw	1
20	920628	Nut	1
23	608617	Tank, Vacuum	1
24	608303	Spring	1
25	603415	Gasket, Coupler	1
26	602409	Coupler	1
27	607001	Pawl	1
28	964143	Screw	2
29	602010	Clamp	2
30	930011	Rivet	4
31	603910	Handle	2
32	600530	Filter Bag Assembly	1
34	964026	Screw	4
35	601308	Base Carriage	1
36	603908	Handle, Transport	1
37	925005	Pin, Dowel	4
38	609713	Wheel	2
39	600216	Adaptor	1
40	601508	Cap, Wheel Shaft	2
41	600218	Adaptor, Lower Motor	1
42	605004	Knob	1
43	609714	Caster	2
44	600804	Bracket	1
45	600807	Bracket, Antistatic	1
51	911267	Terminal Board	1
53	604801	Insulation, Sound	1
55	608101	Sleeve, Motor Cooling Air	1