



Electronic Service Manuals

This electronic document is provided as a service to our customers. We do not create the contents of the information contained in this document. Should you have detailed questions pertaining to the information contained in this document, you may contact Michco, or the manufacturer which provided the original information in this electronic deliverable. Michco's only part in this electronic deliverable was the electronic assembly process.

You may contact Michco through the following methods:
Phone (517) 484-9312 or (800) 331-3339 MI, OH, IN only
2011 N. High St. -- Lansing, Michigan -- 48906
Fax: (517) 484-9836
Email: CustServ@Michco.com
Web site: www.Michco.Com
Parts Web site: www.FloorMachineParts.Com

Order Parts on Line at:
www.FloorMachineParts.Com

Directly to Parts & Service:
By Email: **Shop@Michco.com**
By Fax: (517) 702-2041
By Voice: Use numbers above.

Serving the Cleaning Industry Since 1922

Notice: All copyrighted material remains property of original owners, all trademarks are property of respective owners. Manuals are subject to Manufacturer's reproduction limitations. Originals or reproductions were provided by manufacturers through a request. We make no warranty as to the correctness of information provided in this document and you assume all risk.

POLISHERS

DUAL SPEED MODELS

SeaRay 175DS

SeaRay 205DS

INTRODUCTION

OPERATING & MAINTENANCE INSTRUCTIONS

READ THIS BOOK

This operator's book has important information for the use and safe operation of this machine. Read this book carefully before starting the machine. Keep this book and tell all operators to read the book. If you do not follow the instructions, you can cause an injury or damage equipment, furniture or buildings.

For new books write to:

Pacific
2259 S. Sheridan
Muskegon, MI 49442-6252

Carefully inspect all components to ensure that there is no concealed freight damage. If such damage is discovered, file a "CONCEALED DAMAGE REPORT" immediately with the delivering carrier.

The contents of this manual are based on the latest product information available at the time of publication. Pacific reserves the right to make changes or improvements to its machines without notice.

FOR YOUR CONVENIENCE, RECORD THE MACHINE MODEL AND SERIAL NUMBER:

MODEL _____

SERIAL NUMBER _____

PART NUMBER _____

DATE PURCHASED _____

IMPORTANT SAFETY INSTRUCTIONS

To assure the safe operation of this machine, you must read and understand all warnings and instructions in this book. If you do not understand, ask your supervisor.

READ ALL INSTRUCTIONS BEFORE USING THIS MACHINE

WARNING: To reduce the risk of fire, electric shock, or injury:

1. You must be trained to operate this machine. This machine is to be operated for its intended use only.
2. Do not operate this machine unless it is completely assembled.
3. Always use a three-wire electrical system connected to the electrical ground. For maximum protection against electrical shock, use a circuit that is protected by a ground fault circuit interrupter. Consult your electrical contractor.
4. To prevent electric shock, always remove the electrical plug from the electrical outlet before doing any repairs or maintenance and when leaving the machine unattended.
5. To prevent electric shock, keep the machine surface dry. Do not subject to rain. Store the machine in a dry building area. Clean the machine with a dry cloth only.
6. Machines can cause an explosion when near flammable materials and vapors. Do not use this machine with or near fuels, grain dust, solvents, thinners, or other flammable materials. Do not use flammables to clean this machine.
7. A qualified or authorized person must do maintenance and repairs.
8. To prevent damage to the power cord, do not move this machine over the power cord. Always lift the power cord over the machine. Do not pull or carry cord, use cord as a handle, close a door on cord, or pull cord around sharp edges or corners. Keep cord away from heated surfaces.
9. Do not use with damaged cord or plug. If the machine is not working as it should, has been dropped, damaged, left outdoors, or dropped into water, return it to a service center.

Grounding Instructions

This machine must be grounded. If it should malfunction or break down, grounding provides a path of least resistance for electric current to reduce the risk of electric shock. This machine is equipped with a cord having an equipment-grounding conductor and grounding plug. The plug must be inserted into an appropriate outlet that is properly installed and grounded in accordance with all local codes and ordinances.

WARNING - Improper connection of the equipment-grounding conductor can result in a risk of electric shock. Check with a qualified electrician or service person if you are in doubt as to whether the outlet is properly grounded. Do not modify the plug provided with the machine - if it will not fit the outlet, have a proper outlet installed by a qualified electrician.

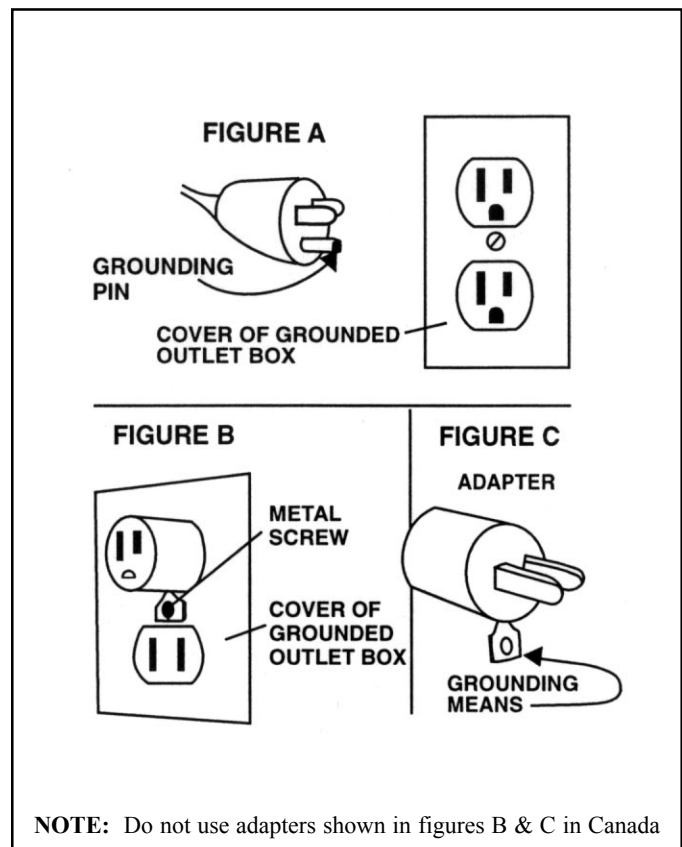
This machine is for use on a nominal 120-volt circuit, and has a grounded plug that looks like the plug illustrated in figure A. A temporary adapter that looks like the adapter illustrated in figures B and C may be used to connect this plug to a 2-pole receptacle as shown in figure B if a properly grounded outlet is not available. The temporary adapter should be used only until a properly grounded outlet (figure A) can be installed by a qualified electrician. The green colored rigid ear, lug, or the like extending from the adapter must be connected to a permanent ground such as a properly grounded outlet box cover. Whenever the adapter is used, it must be held in place by a metal screw.

NOTE: In Canada, the use of a temporary adapter is not permitted by the Canadian Electrical Code

EXTENSION CORDS

Use only three-wire 12/3 or larger gauge approved extension cords that have three-prong grounding type plugs and three-pole receptacles that accept the appliance's plug. Replace or repair any damaged cords or plugs.

When servicing, refer to authorized person only. Use only identical replacement parts.



OPERATING PROCEDURES

WARNING! For the safe operation of this machine follow the instructions given in this manual and the training given by your supervisor. Failure to do so can result in personal injury and/or damage to machine and property!

DO NOT OPERATE MACHINE IN AN EXPLOSIVE ENVIRONMENT!

This machine is intended for commercial use.

PREPARATION

To prepare the machine for operation, make sure it is of correct voltage and properly assembled.

Your new floor machine operates in the normal side to side motion of a conventional single disc machine. Be prepared before starting by removing all obstructions or other obstacles in the area to be cleaned. Check the proper application recommendations and procedures found on the label of your cleaning or finish container. **IF IN DOUBT, CALL YOUR SUPERVISOR.**

WARNING! NEVER USE THIS MACHINE WITH FLAMMABLE OR EXPLOSIVE MATERIAL!

For Scrubbing or Polishing: Select the correct floor pad or brush (your supplier can help you). If in doubt, ask your supervisor.

NEVER OPERATE THE MACHINE WITHOUT THE FLOOR PAD OR BRUSH INSTALLED!

To properly attach the brush, **UNPLUG THE FLOOR MACHINE**, place the handle in the vertical position, then tilt the machine back until the handle rests on the floor. Straddle the handle, facing the motor, and grasp the brush with the block toward you. Place the brush or pad clutch plate over the three lugs on the motor drive adapter. Twist the brush right to lock it into position. To remove the brush, **UNPLUG THE MACHINE** and follow the same procedure as above, but by twisting the brush off with a firm jerk to the left. Remove the brush or pad driver when the machine is not in use. This will help prevent brush damage and reduce wobble problems.

DUAL SPEED CONTROL: A rocker switch is located on the motor drip cover. Press the switch in on the side labeled **LOW** for 175 RPM pad speed or to **HIGH** for 300 RPM pad speed.

OPERATION

Plug the machine's power cable into a properly grounded outlet (see Safety Instructions). Next, adjust the handle height to a comfortable position.

Pull out on the "Watch Dog" Safety Lock button and start the machine by depressing either the left or right switch levers.

Both hands should be placed on the handle when the machine is in operation. The machine will glide sideways over the floor by a slight raising and lowering of the handle. Raise the handle slightly to go to the right. Lower the handle slightly to go left. **Releasing the switch lever stops the machine.**

For Spray Buffing: A diluted spray material of about one part water to one part solution is recommended. Heavier spray buff solutions will bog down the machine, load up the pad and adversely affect the machine's efficiency.

MAINTENANCE

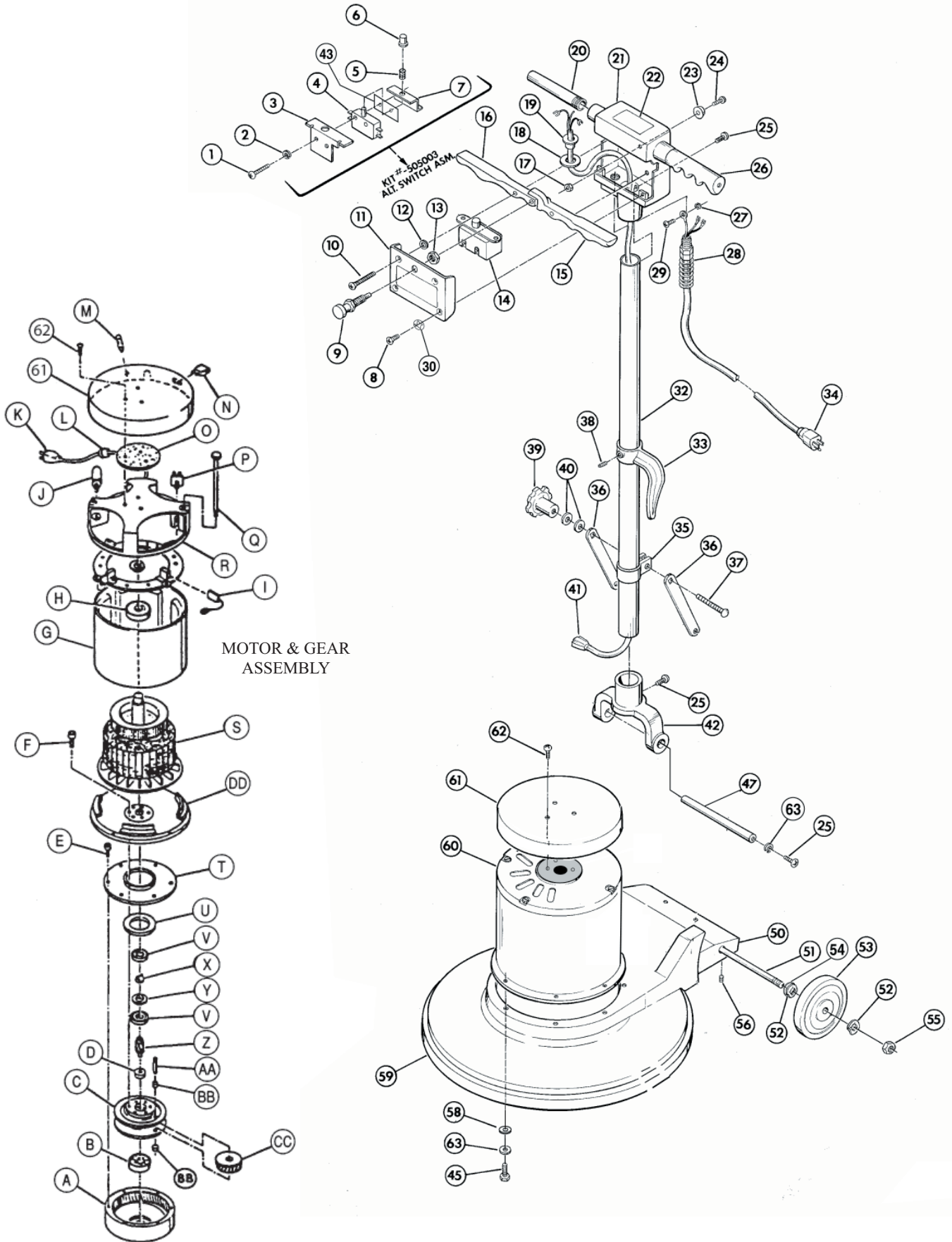
AFTER EACH USE: Store the machine in a clean dry area. Wipe the entire machine and cord down with a clean cloth. Remove the pad or brush and clean thoroughly. Wrap the machine's electrical cord onto the handles and the cord hook provided. **CHECK** the cord and plug for nicks, cuts or damage. Report these to your supervisor for correction.

WARNING! Always disconnect the machine's electrical plug from the electrical outlet before performing any service, maintenance, pad changing or inspection of the machine.

MOTOR: The motor is lubricated for life under normal use. No oiling or greasing is necessary. However, if the machine is used in dusty areas or is used for spray buffing, the motor should be cleaned. Blowing the motor out with compressed air or with the exhaust from a vacuum is suggested. Keeping the motor clean will allow the clear passage of air for ventilation and prevent overheating. If you have any questions regarding the maintenance of your floor machine, **ASK YOUR SUPERVISOR.**

CARBON BRUSH INSPECTION: Long life 3000-hour carbon brushes are installed in the motor. The machine is also equipped with a carbon brush wear indicator to signal when a carbon brush change is required.

SEARAY 175DS & 205DS

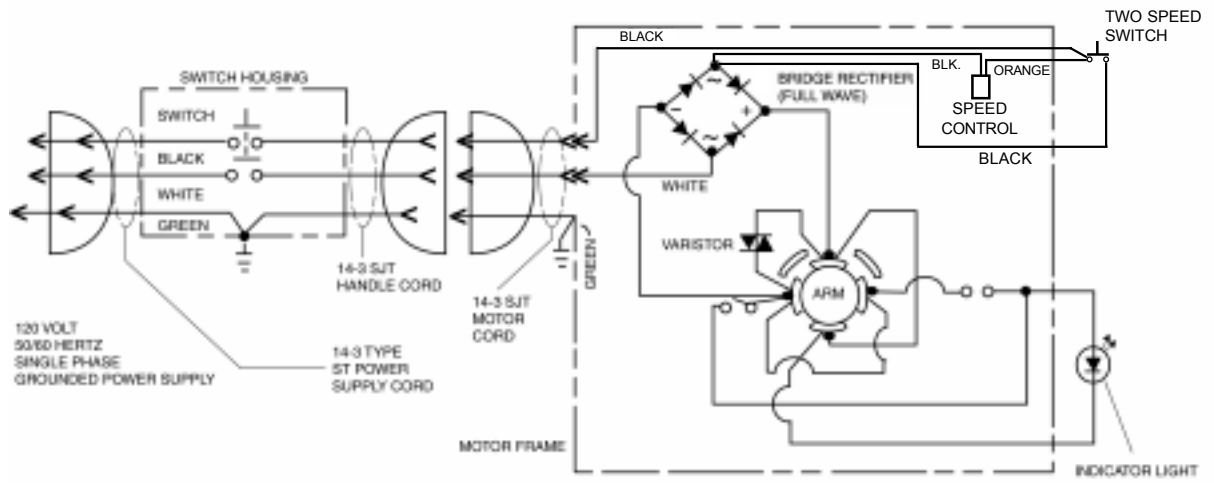


**SEARAY 175DS & 205DS
PARTS LIST**

Item	Part #	Description	Qty.
1	W323D	#6-32 x 1 Pan Head Screw	2
2	980016	#6 Lockwasher	2
3	500801	Bracket - Switch Mounting	1
4	911135	Switch	1
5	508301	Spring-Compression	1
6	507001	Plunger-Spring	1
7	500802	Bracket - Switch	1
8	962002	#10-32 x ½ Oval Hd Screw	2
9	504810	Interlock Asm - Switch	1
10	962011	#10-32x1 ¼ Oval Hd Screw	2
11	486404	Switch Cover Plate	1
12	509821	Washer - Rubber	2
13	920005	3/8-24 Hex Nut	1
14	508020	Switch (or 505003 Switch)	1
15	505121	Lever - Switch Left	1
16	505120	Lever - Switch Right	1
17	920001	#10 - 32 Elastic Stop Nut	1
18	509830	Washer - Handle Tube	1
19	503320	Flange - Strain Relief	1
20	505720	Handle Nipple	2
21	481304	Switch Housing w/o Cir. Brkr	1
22	515150	Warning Label	1
23	501210	Bumper Handle	1
24	962003	10-32 x ¾ Pan Hd Screw	1
25	962006	1/4-20 x ½ Pan Hd Screw	4
26	503711	Handle Grip - Grey	2
	501501	Cap, Protective End (blue)	2
27	980015	Washer, #10 Ext. Tooth	2
28	508520	Strain Relief - Complete	1
	502020	Strain Relief - Brass Clamp	1
29	962015	10-32 x 3/8 Pan Hd Screw	1
30	980018	Washer, #10 Countersunk	1
32	509082	Handle Tube	1
33	504420	Cork Hook	1
34	502422	Cord Assembly 50 ft Yellow	1
35	502021	Clamp Handle	1
36	500840	Arm Handle Support	2
37	962009	5/16-18 x 2 ½ Carriage Bolt	1
38	962005	Screw, 1/4-20 x 3/8 Allen	1
39	505010	Turn Knob	1
40	980007	5/16 Flat Washer	2
41	908004	Cord Asm- Handle	1
42	509920	Yoke Handle	1
43	504702	Insulator-Switch	1
45	962010	Screw, ¼-20x1 HH	4
47	507480	Rod-Yoke	1
50	483215	Base 17"	1
	483211	Base 20"	1

Item	Part #	Description	Qty.
51	487702	Shaft-Wheel Axle	1
52	980005	Wave Washer	2
53	509781	Wheel 5"	2
55	W502D	½ -13 Hex Nut	2
56	962016	Screw, 10-32x3/8 Set	1
58	980004	Washer, ¼ Flat	4
59	481202	Bumper 17"	1
	481203	Bumper 20"	1
60	505265	Motor & Gear 115V 1.5 HP	1
	505266	Motor & Gear 230V 1.5 HP	1
61	502397	Drip Cover	1
62	962026	Screw 8-32 x 1/2	3
63	980002	Washer, ¼ Lock	6
A	504209	Housing - Ring Gear	1
B	902004	Bearing	1
C	504208	Housing - Idler	1
D	902006	Bearing	1
E	960016	Screw	6
F	960017	Screw	6
G	503117	Field and Shell Assembly	1
H	902011	Bearing	1
I	500903	Carbon Brush motor 115V	4
	510901	Carbon Brush motor 230V	4
J	911127	Speed Control 115V	1
	911141	Speed Control 230V	1
K	908024	Cord Assembly Motor	1
L	508519	Strain Relief	1
M	505181	Light Brush Wear 115V	1
	505182	Light Brush Wear 230V	1
N	911115	Switch - High/Low	1
O	509823	Washer - Felt	1
P	911048	Rectifier 115V 50/60C	1
	911081	Rectifier 230V 50/60C	1
Q	960018	Bolt - Motor Thru	2
R	502928	End Bell - Motor TOP	1
S	500425	Armature 115V	1
	500423	Armature 230V	1
T	502317	Cover Housing	1
U	902015	Bearing	1
V	902005	Bearing	2
X	502465	Coupling	1
Y	508211	Spacer Sleeve	1
Z	503510	Pinion	1
AA	507701	Shaft Idler	3
BB	902016	Bearing Idler	3
CC	503511	Gear Planet	3
DD	502929	End Bell Motor Lower	1

WIRING DIAGRAM



NO. 3390

NOTES

WARRANTY POLICY

POLISHER MODELS SEARAY 175DS & SEARAY 205DS

The **Pacific** Polisher has been manufactured, tested and inspected in accordance with specific engineering requirements and is WARRANTED to be free from defects in workmanship and materials as follows:

Three (3) years parts, One (1) year labor - DC Motor and Gear Unit, except motor switches, rectifiers, carbon brushes and flex couplings which have a one (1) year warranty.

Three (3) years parts, One (1) year labor - Castings

One (1) year parts and labor - All other components unless excluded below.

This warranty extends to the original user/purchaser and only when used, operated and maintained in accordance with **Pacific** Operating and Maintenance instructions.

This warranty does not apply to the following wear parts and accessories of the machine including:

Part Number	Part Name
502422	Cord Assembly
509781	Wheel
503711	Handle Grip, Grey
481202	Bumper, 17"
481203	Bumper, 20"
500903	Carbon Brush, 115V Motor
510901	Carbon Brush, 230V Motor

Nor does it apply to damage or failure caused by improper use, abuse or neglect. Warranty credit or replacement of return parts including motors, etc., is subject to incoming inspection of those items.

To secure repair under this warranty, the following procedure should be taken:

- The inoperative machine or warranted parts must be delivered to the authorized dealer with shipping and delivery charges prepaid. If unable to locate the Dealer, you may contact **Pacific** at the address listed herein for the location of the nearest **Pacific** repair center or agent or for other instructions pertaining to your warranty difficulty.
- Upon compliance with the above warranty procedure, all warranted repairs would be completed at no additional charge or cost to the user.
- Only **Pacific** or its authorized dealers and agents may make no charge warranty repairs on this product. All others do so at their own risk.

This warranty limits **Pacific** liability to the repair of the product and/or warranted parts replacement and does not include incidental or consequential damages arising from the use of a **Pacific** machine whether defective or not.

This warranty is in lieu of all other expressed or implied warranties and is extended to the original purchaser/user.

PACIFIC

2259 Sheridan

Muskegon, Michigan 49442

Ph: (800) 968-1332 Fax: (231) 773-1642

www.nextwaveofclean.com