



Operator and Parts Manual

Nu-1600 Burnisher, Belt Drive
Nu-2000 Burnisher, Belt Drive



NuSource Enterprises, LLC; A 4699 61st St. Suite C; Holland, MI 49423

Specifications

Length – 33.75 in.

Width – 21 in.

Height – 50 in.

Weight – 69 Lbs.

Pad Speed 1600/2000

Pad Diameter 20 in.

Drive motor – 1.5 HP, 120v, 15 A, 50/60 HZ

Cord – 14-3 ST, 75 ft.

Hour meter – 0.1 hr resolution

Safety

Read and understand the manual before operating this machine.

Do not operate in explosive areas or use near flammable liquids or gases.

Attach only to properly grounded outlet.

Do not expose to rain, store indoors.

Do not operate the machine with a damaged cord or plug.

Do not block or disconnect the safety lever.

Do not leave the machine plugged in while unattended.

Unplug the machine before servicing.

Do not put fingers under the pad or pad holder.

Unplug the machine before installing or removing the pad.

Use only with Hi Speed Burnishing pads.

Operating Instructions

Check machine for damage to cord or plug.

Use only Hi Speed Burnishing pads 20” or 19” diameter.

To install or change the pad:

1. Unplug the machine.
2. Tip the machine back on the wheels.
3. Remove the center-lock.
4. Center the pad on the pad driver.
5. Replace the center-lock and tighten securely.

To operate the machine:

1. Plug into a grounded outlet.
2. Release the handle and lower it.
3. The handle can be locked into a comfortable position for the operator or used free floating.
4. Press the safety lever and squeeze the trigger to start the machine.
5. Do not operate in one place as damage to the floor or finish could result.
6. Do not operate the machine with the handle in the upright position.
7. Remove the pad after every use.
8. Store the machine tilted back on the transport wheels.
9. Use only new or clean pads and reverse them as needed.

Maintenance

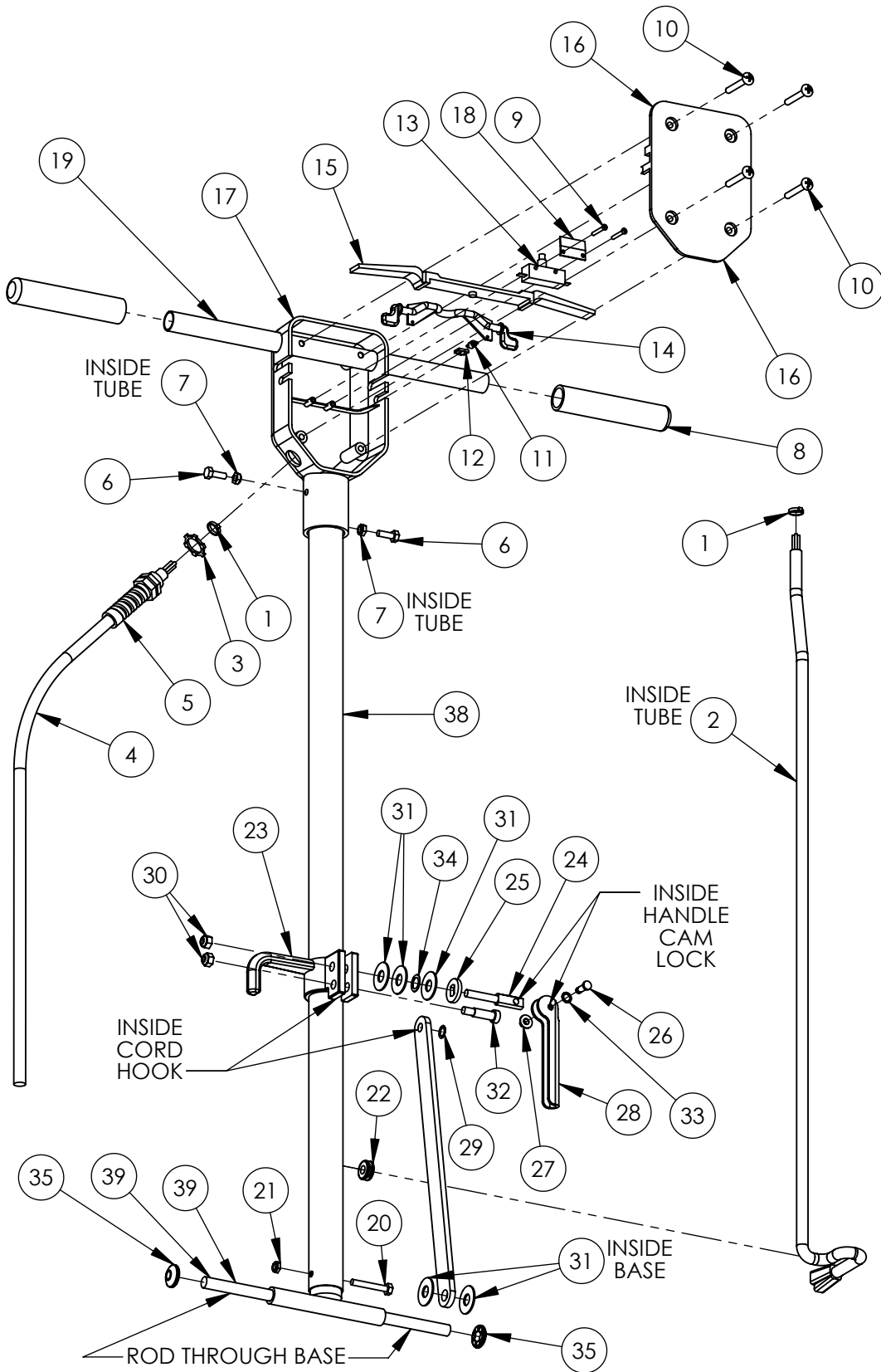
To maintain appearance – wipe the machine with a damp cloth after use.

Warning – Unplug the machine before servicing

This machine is equipped with an hour meter to signal maintenance intervals of 250 hours. It will begin flashing at 245 hrs and stop at 255 hrs to signal the operator to check the following:

1. Check the motor brushes for wear or excessive arcing.
2. Check belt tension.
3. Check the cord and electrical system.
4. Check the safety lockout on the trigger.
5. Check wheels and bearings.

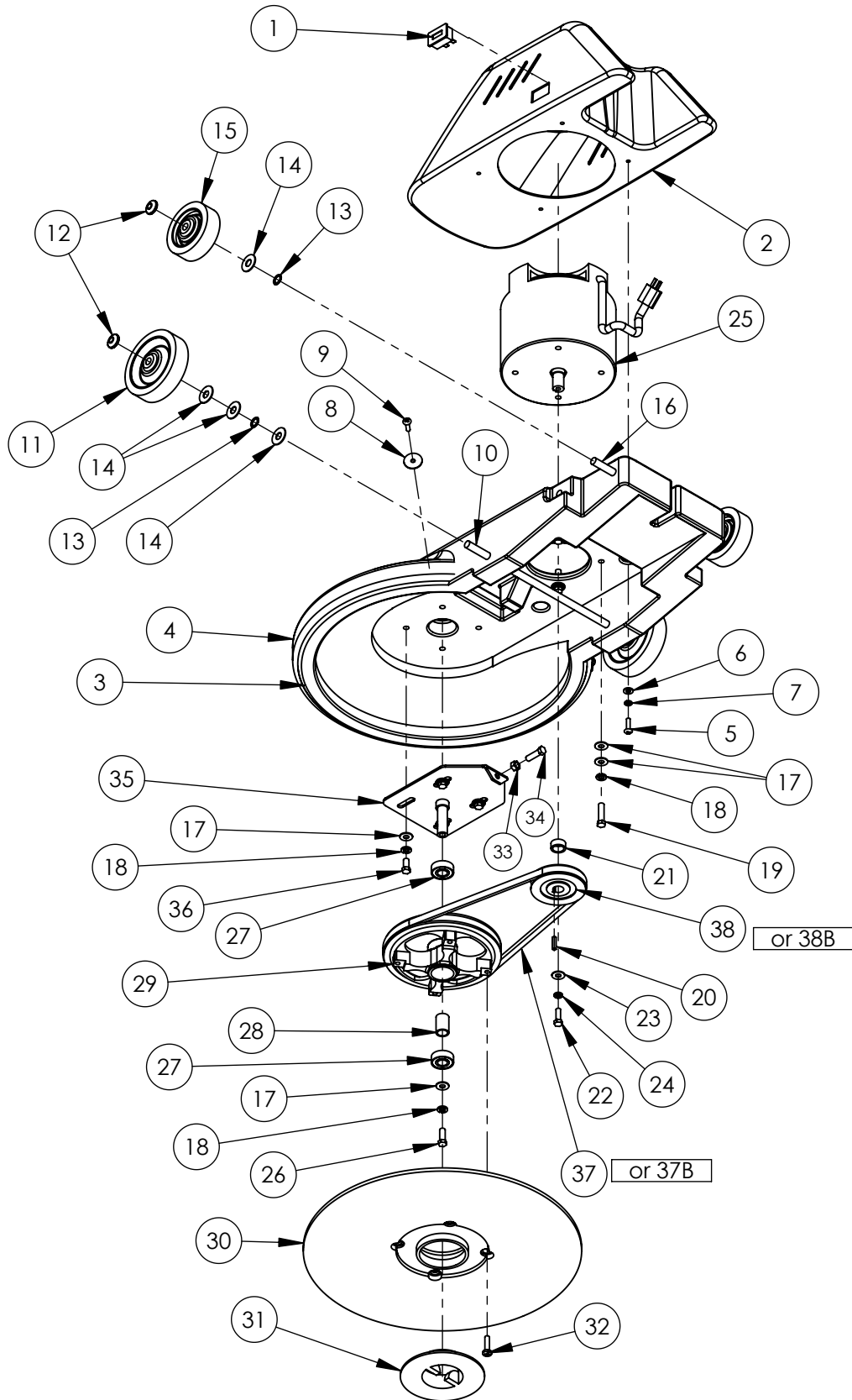
HANDLE PARTS



HANDLE PARTS

ITEM NO.	NUSOURCE PART #	DESCRIPTION	QTY.
1	110146	NYLON CABLE TIE	2
2	210105	CORD, HANDLE, 14-3	1
3	110299	NUT, ELECTRICAL CONDUIT, 1/2"	1
4	210103	CORD, 75 FEET, 14-3 ST	1
5	210104	STRAIN RELIEF FOR REPLACEMENT	1
6	110178	BOLT, HEX, 1/4-20 x 3/4	2
7	110115	NUT, NYLOCK, 1/4-20	2
8	310118	GRIP	2
9	110116	SCREW, PHILLIPS, No. 6 x 1	2
10	110140	SCREW, PHILLIPS, 1/4-20 x 1.75	4
11	110149	SPRING	1
12	110163	CLIP, SPRING	1
13	210102	SWITCH	1
14	310119	SAFETY LOCK	1
15	310120	TRIGGER, SWITCH	1
16	310121	COVER, SWITCH BOX	1
17	310122	SWITCH BOX, HANDLE, SINGLE SPEED	1
18	310153	PLATE, SWITCH	1
19	310124	HANDLE TUBE, 7/8 x 16	1
20	110318	BOLT, HEX, 1/4-20 x 1-3/4, GRADE 5	1
21	110319	NUT, NYLOCK, 1/4-20	1
22	210106	GROMMET, .375 ID	1
23	310128	CORD HOOK	1
24	110111	BOLT, ADJUSTABLE, CAM, 5/16-18	1
25	110112	OVAL WASHER	1
26	110114	PIN, .25 x .75	1
27	110151	CAP, PUSH, .25	1
28	310129	HANDLE, CAM LOCK	1
29	110169	WASHER, SPRING, 3/8	1
30	110148	NUT, NYLOK, 5/16-18	2
31	110103	WASHER, NYLON	5
32	110154	BOLT, SHOULDER, 3/8 x 1	1
33	110164	WASHER, SPRING, 1/4	1
34	110168	WASHER, SPRING, 1/2	1
35	110144	CAPS, AXLE, 0.5	2
36	310126A	HANDLE ATTACHMENT, WELDED "T"	1
37	310130	BRACKET, FLAT, HANDLE	1
38	310127A	HANDLE TUBE	1
39	310132	AXLE, 1/2 x 12.375	1

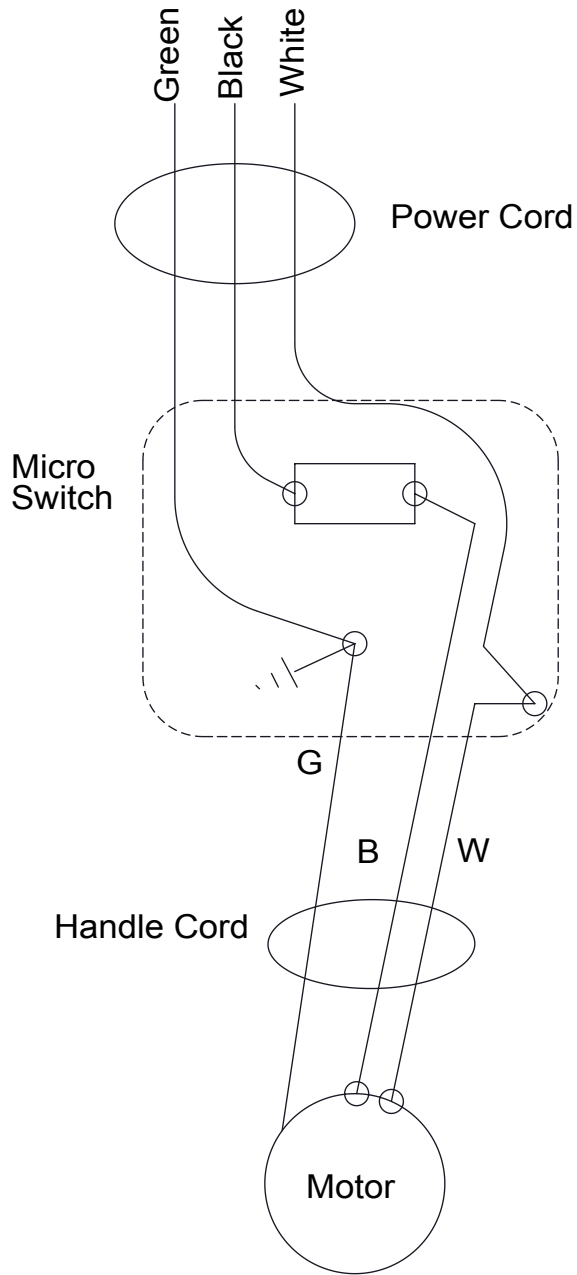
BASE, MOTOR, AND WHEELS



BASE, MOTOR, AND WHEELS

ITEM NO.	NUSOURCE PART #	DESCRIPTION	QTY.
1	210108	HOUR METER	1
2	310117	COVER, MOTOR, BURGANDY, HS	1
3	310101	BASE, HIGH SPEED	1
4	310111	BUMPER	1
5	110141	SCREW, PHILLIPS, 1/4-20 x 1	4
6	110142	WASHER, FLAT, 1/4	4
7	110143	WASHER, LOCK, 1/4	4
8	110130	WASHER, FENDER, 1/4	2
9	110150	SCREW, PHILLIPS, 1/4-20 x 1	2
10	310116	AXLE, 1/2 x 17.25	1
11	310114	WHEEL, 5 INCH	2
12	110144	CAPS, AXLE, 0.5	4
13	110168	WASHER, SPRING, 1/2	4
14	110103	WASHER, NYLON	8
15	310112	WHEEL, 4 INCH	2
16	310115	AXLE, 1/2 x 13.875	1
17	110123	WASHER, FLAT, 3/8	13
18	110124	WASHER, LOCK, 3/8	9
19	110173	BOLT, HEX, 3/8-16 x 1.5"	4
20	NONE	KEY, 3/16 x 3/16 x 1	1
21	110155	SPACER, .75 ID	1
22	110152	BOLT, HEX, 5/16-18 x 1	1
23	110119	WASHER, FLAT, USS, 5/16	1
24	110120	WASHER, LOCK, 5/16	1
25	210101	MOTOR, 1.5 HP, 3200 RPM	1
26	110165	BOLT, HEX, 3/8-16 x 1	1
27	110102	BEARING	2
28	110145	SPACER, PULLEY BEARINGS	1
29	310105	PULLEY, PAD DRIVE	1
30	310106	PAD DRIVER, COMPLETE ASSEMBLY	1
31	310108	CENTERING DEVICE, BIG MOUTH	1
32	110166	SCREW, PHILLIPS PAN, ZN, 5/16-18 x 1.25	4
33	110127	NUT, 3/8-16	1
34	110126	BOLT, HEX, 3/8-16 x 1.25	1
35	310109	BRACKET, PULLEY MOUNT	1
36	110125	BOLT, HEX, 3/8-16 x .75	4
37	310134	BELT, 2000 RPM	1
38	310103	PULLEY, 2000 RPM	1
37B	310123	BELT, 1600 RPM	1
38B	310102	PULLEY, 1600 RPM	1

ELECTRICAL



Standard Machines

Warranty Policy

12 Year Coverage

Subject to the conditions stated below, NuSource Enterprises, LLC warrants parts and labor on rotationally molded polyethylene tanks/housings and injection molded vacuum head assemblies to be free from defects in materials and workmanship for a period of twelve years to the original purchaser.

3 Year Coverage

Subject to the conditions stated below, NuSource Enterprises, LLC warrants parts and labor on all other NuSource Enterprises, LLC components to be free from defects in materials and workmanship for a period of three years to the original purchaser.

1 Year Coverage

Subject to the conditions stated below, NuSource Enterprises, LLC offers a limited warranty on parts and labor on the following equipment, parts and accessories to be free from defects in material and workmanship for a period of one year to the original purchaser. Batteries are pro-rated for one year.

Propane Machine Warranty: Honda engines are warranted by Honda for a period of 2 years against manufacturer defect. Kawasaki engines are warranted by Kawasaki for a period of 2 years against manufacturer defect. All other components (except wear items) are warranted by NuSource Enterprises, LLC for a period of 3 years.

This warranty does not apply to damage or defect caused by accident, misuse, negligence, fire or to any NuSource product which has been serviced or repaired by other than an authorized NuSource Service Distributor or NuSource factory personnel. This warranty is void if products are used for any purpose other than that which was intended. There are no other warranties expressed or implied. In no event shall NuSource be liable for incidental or consequential damages or any damage to person or property. (Please note some states do not allow the exclusion or limitations for incidental and consequential damages.)

NuSource Enterprises, LLC
A 4699 61st Street Suite C
Holland, MI 49423
Phone- 616 335 5401 / Fax- 616 335 5901
www.nusourcecorp.com