



Operator and Parts Manual



Floor Machines

- NU-17FLC - Contractor
- NU-20FLC - Contractor
- NU-17FLHD - Heavy Duty
- NU-20FLHD - Heavy Duty
- NU-17FLDS - Dual Speed
- NU-20FLDS - Dual Speed

Specifications

Length – 24.25 in.

Width – 20. in.

Height – 48 in.

Weight – 85.5 Lbs.

Speed 175 Std, Two Speed 185/330

Pad Diameter 17 or 20 in. Drivers 16" & 19"

Drive motor – 1.5 HP, 120v, 12A, 60 Hz
- 1 HP, 120v, 12A, 60 Hz
Two Speed – 1.5 HP, 12 A, 60 Hz

Cord – 14-3 ST, 50 ft.

Hour meter – 0.1 hr resolution

Safety

Read and understand the manual before operating this machine.

Do not operate in explosive areas or use near flammable liquids or gases or dust.

Attach only to properly grounded outlet.

Do not expose to rain, store indoors.

Do not operate the machine with a damaged cord or plug.

Do not block or disconnect the safety lever.

Do not leave the machine plugged in while unattended.

Unplug the machine before servicing.

Do not put fingers under the pad or pad holder.

Unplug the machine before installing or removing the pad.

Use only with Suitable Pads or Brushes.

Operating Instructions

Check machine for damage to cord or plug.

Use suitable pads or brushes.

To install or change the pad:

1. Unplug the machine.
2. Tip the machine back on the wheels.
3. Install brush or pad driver.
4. Center the pad on the pad driver.

To operate the machine:

1. Plug into a grounded outlet.
2. Release the handle and lower it.
3. The handle should be locked into a comfortable position for the operator.
4. Press the safety lever and squeeze the trigger to start the machine.
5. Do not operate in one place as damage to the floor or finish could result.
6. Do not operate the machine with the handle in the upright position.
7. Remove the pad after every use.
8. Store the machine with the pad or brush removed.
9. Use only new or clean pads and reverse them as needed.

Maintenance

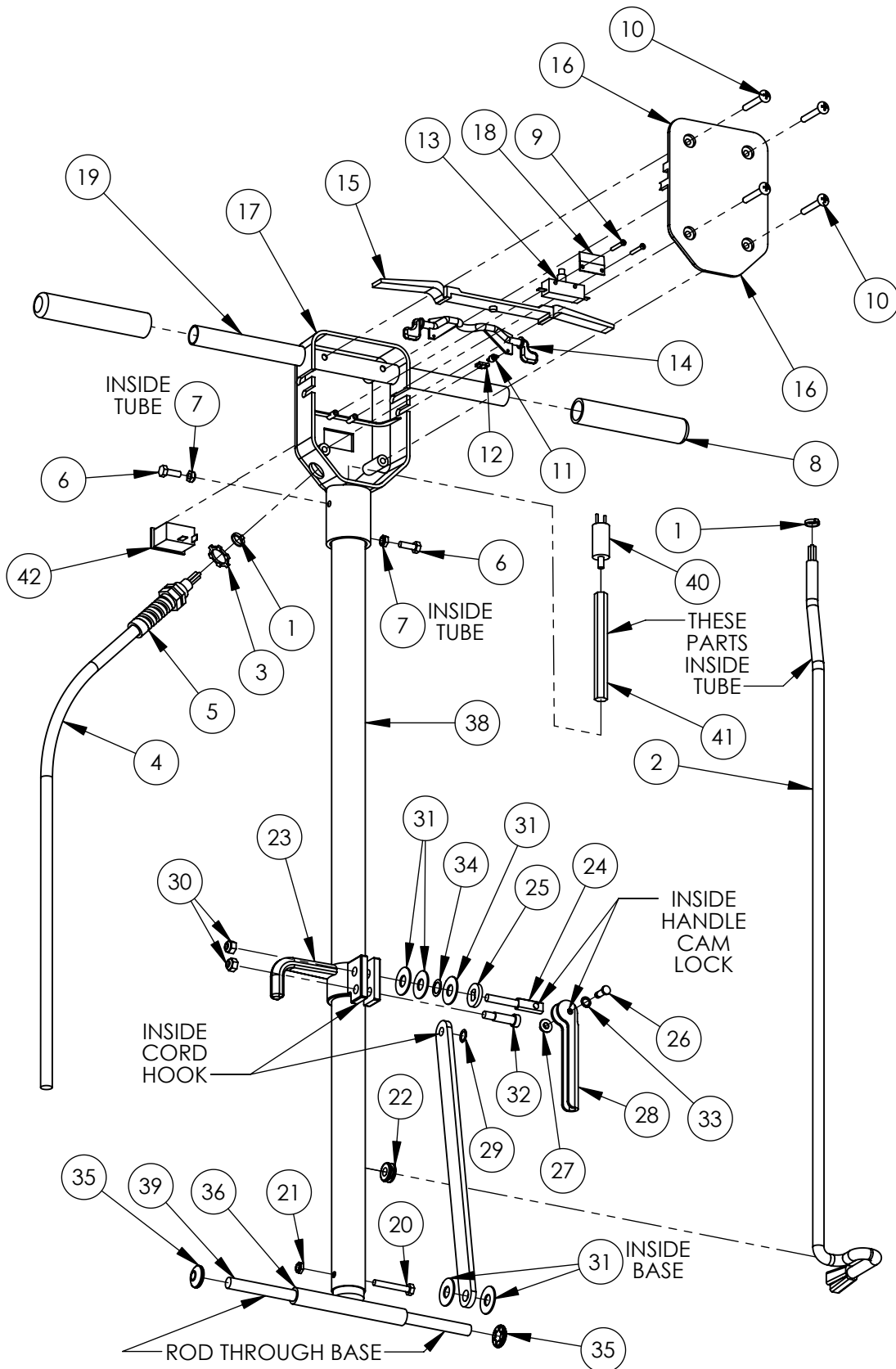
To maintain appearance – wipe the machine with a damp cloth after use.

Warning – Unplug the machine before servicing

This machine is equipped with an hour meter to signal maintenance intervals of 250 hours. It will begin flashing at 245 hrs and stop at 255 hrs to signal the operator to check the following:

1. Check the motor brushes for wear or excessive arcing on the two speed machine.
2. Check the cord and electrical system.
3. Check the safety lockout on the trigger.
4. Check the wheels.

HANDLE PARTS

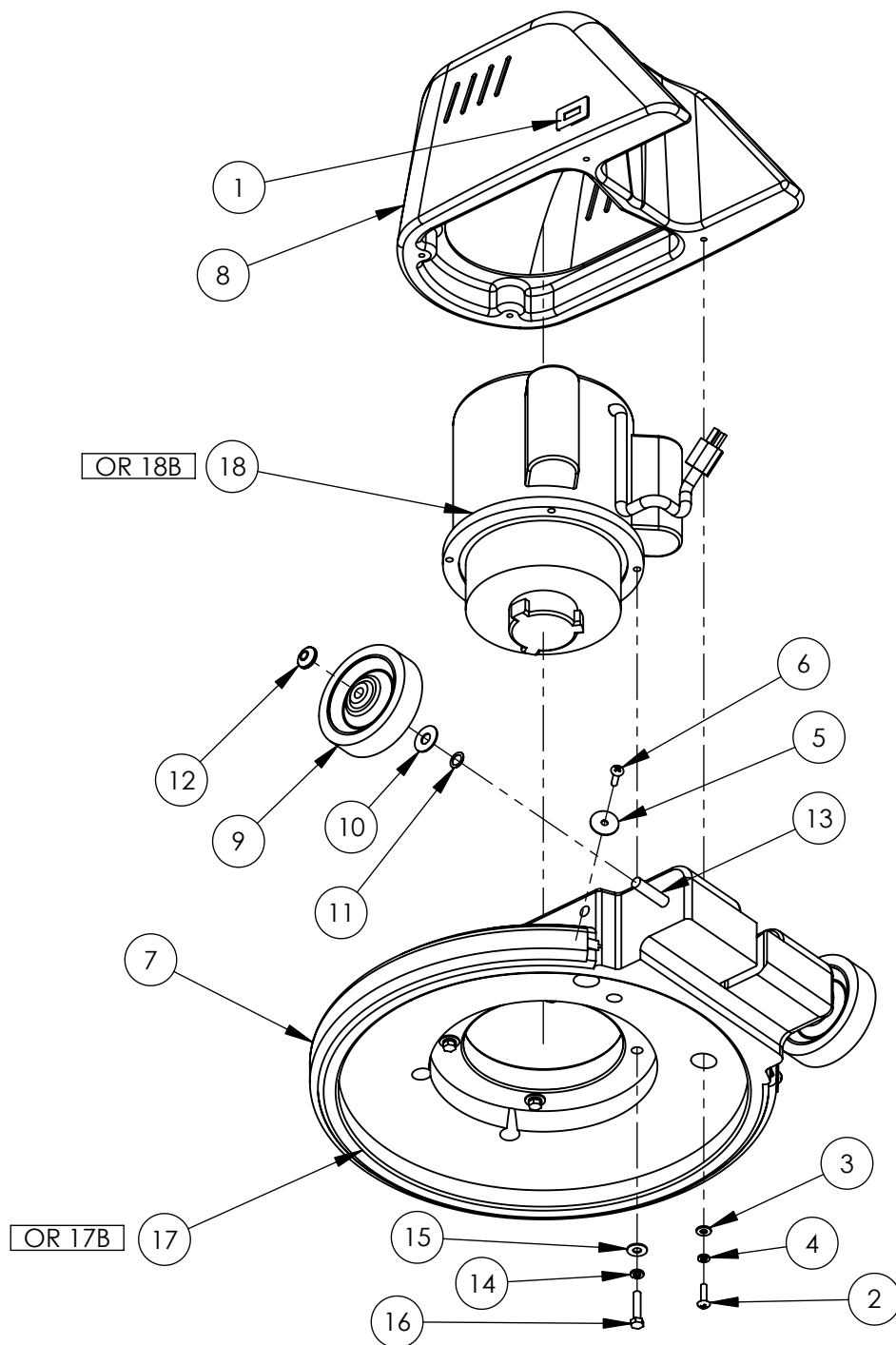


HANDLE PARTS

ITEM NO.	NUSOURCE PART #	DESCRIPTION	QTY.
1	110146	NYLON CABLE TIE	2
2	210105	CORD, HANDLE, 14-3	1
3	110299	NUT, ELECTRICAL CONDUIT, 1/2"	1
4	210121	CORD, 50 FEET, 14-3 ST	1
5	210104	STRAIN RELIEF FOR REPLACEMENT	1
6	110178	BOLT, HEX, 1/4-20 x 3/4	2
7	110115	NUT, NYLOCK, 1/4-20	2
8	310118	GRIP	2
9	110116	SCREW, PHILLIPS, No. 6 x 1	2
10	110140	SCREW, PHILLIPS, 1/4-20 x 1.75	4
11	110149	SPRING	1
12	110163	CLIP, SPRING	1
13	210102	SWITCH	1
14	310119	SAFETY LOCK	1
15	310120	TRIGGER, SWITCH	1
16	310121	COVER, SWITCH BOX	1
17	310122	SWITCH BOX, HANDLE, DUAL SPEED	1
18	310153	PLATE, SWITCH	1
19	310124	HANDLE TUBE, 7/8 x 16	1
20	110318	BOLT, HEX, 1/4-20 x 1-3/4, GRADE 5	1
21	110319	NUT, NYLOCK, 1/4-20	1
22	210106	GROMMET, .375 ID	1
23	310128	CORD HOOK	1
24	110111	BOLT, ADJUSTABLE, CAM, 5/16-18	1
25	110112	OVAL WASHER	1
26	110114	PIN, .25 x .75	1
27	110151	CAP, PUSH, .25	1
28	310129	HANDLE, CAM LOCK	1
29	110169	WASHER, SPRING, 3/8	1
30	110148	NUT, NYLOK, 5/16-18	2
31	110103	WASHER, NYLON	5
32	110154	BOLT, SHOULDER, 3/8 x 1	1
33	110164	WASHER, SPRING, 1/4	1
34	110168	WASHER, SPRING, 1/2	1
35	110144	CAPS, AXLE, 0.5	2
36	310126A	HANDLE ATTACHMENT, WELDED "T"	1
37	310130	BRACKET, FLAT, HANDLE	1
38	310127A	HANDLE TUBE	1
39	310132	AXLE, 1/2 x 12.375	1
40	210141	SPEED CONTROL, DUAL SPEED MACHINE	1
41	110247	HEAT SINK ROD	1
42	210122	SWITCH, ROCKER, 2 SPEED	1

NOTE:
DUAL SPEED FLOOR MACHINE HAS ALL PARTS LISTED.
SINGLE SPEED MACHINE DOES NOT HAVE PARTS 40, 41, AND 42.

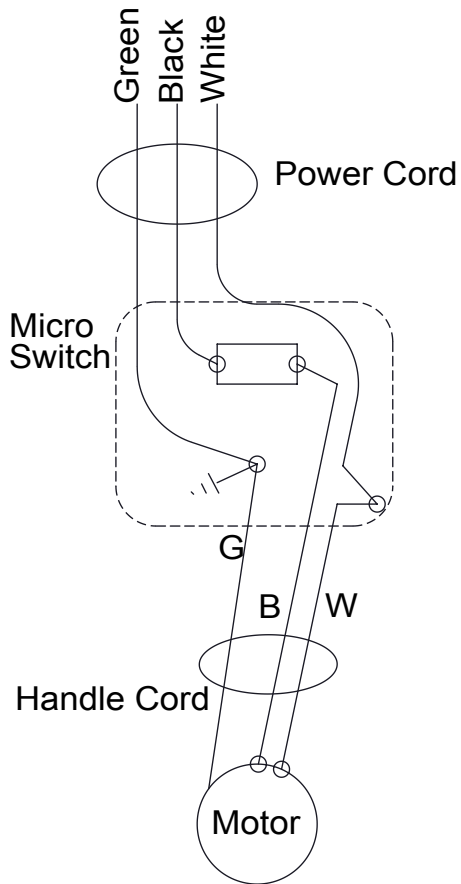
BASE, MOTOR, AND WHEELS



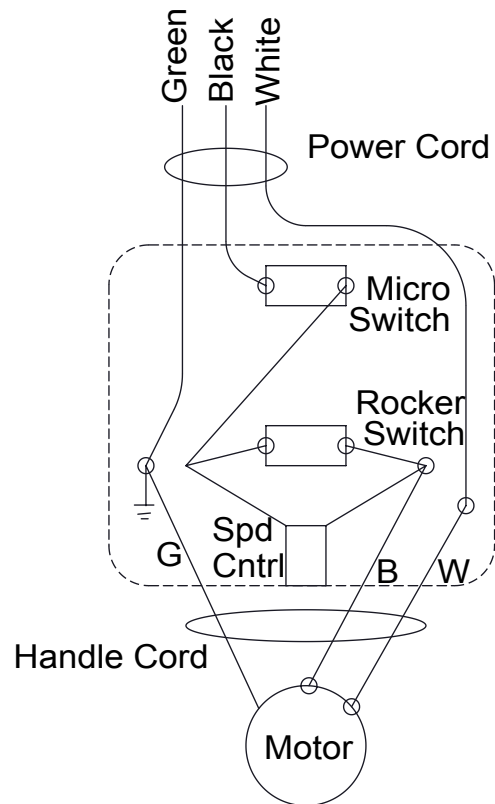
BASE, MOTOR, AND WHEELS

ITEM NO.	NUSOURCE PART #	DESCRIPTION	QTY.
1	210108	HOUR METER	1
2	110141	SCREW, PHILLIPS, 1/4-20 x 1	4
3	110142	WASHER, FLAT, 1/4	4
4	110143	WASHER, LOCK, 1/4	4
5	110130	WASHER, FENDER, 1/4	2
6	110150	SCREW, PHILLIPS, 1/4-20 x 1	2
7	310111	BUMPER	1
8	310140	COVER, MOTOR, BURGANDY, LOW SPEED	1
9	310114	WHEEL, 5 INCH	2
10	110103	WASHER, NYLON	2
11	110168	WASHER, SPRING, 1/2	2
12	110144	CAPS, AXLE, 0.5	2
13	310115	AXLE, 1/2 x 13.875	1
14	110120	WASHER, LOCK, 5/16	4
15	110119	WASHER, FLAT, USS, 5/16	4
16	110177	BOLT, HEX, 5/16-18 x 1.5	4
17	310137	BASE, 20 INCH, LOW SPEED	1
18	210111	MOTOR, 1.5 HP, AC	1
17B	310138	BASE, 17 INCH, LOW SPEED	1
18B	210112	MOTOR, 1.5 HP, DUAL SPEED	1

ELECTRICAL

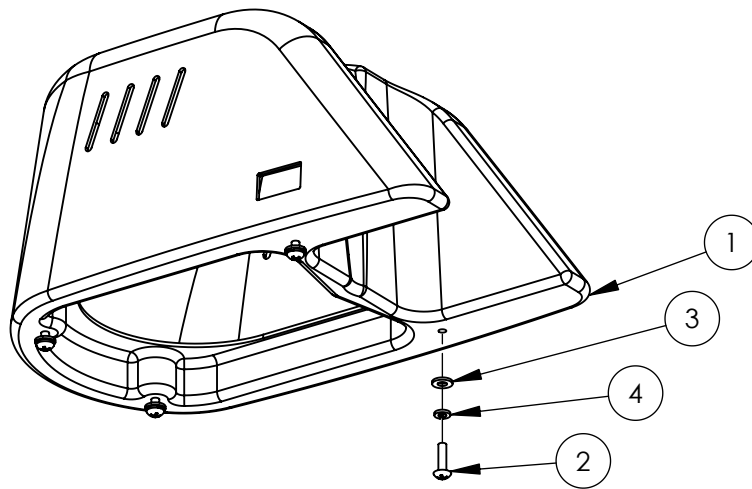


Standard Machines

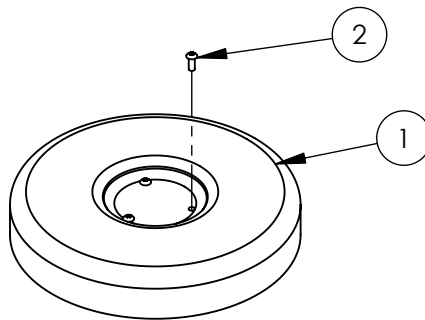


Two Speed Machines

MOTOR COVERS



ITEM NO.	NUSOURCE PART #	DESCRIPTION	QTY.
1	310140	COVER, MOTOR, BURGANDY, LOW SPEED	1
2	110141	SCREW, PHILLIPS, 1/4-20 x 1	4
3	110142	WASHER, FLAT, 1/4	4
4	110143	WASHER, LOCK, 1/4	4



ITEM NO.	NUSOURCE PART #	DESCRIPTION	QTY.
1	310136	COVER, MOTOR, 9" OD x 1.65 TALL	1
2	110226	SCREW, PHILLIPS, 10-32 x .5 TRUSS HEAD	3

Warranty Policy

12 Year Coverage

Subject to the conditions stated below, NuSource Enterprises, LLC warrants parts and labor on rotationally molded polyethylene tanks/housings and injection molded vacuum head assemblies to be free from defects in materials and workmanship for a period of twelve years to the original purchaser.

3 Year Coverage

Subject to the conditions stated below, NuSource Enterprises, LLC warrants parts and labor on all other NuSource Enterprises, LLC components to be free from defects in materials and workmanship for a period of three years to the original purchaser.

1 Year Coverage

Subject to the conditions stated below, NuSource Enterprises, LLC offers a limited warranty on parts and labor on the following equipment, parts and accessories to be free from defects in material and workmanship for a period of one year to the original purchaser. Batteries are pro-rated for one year.

Propane Machine Warranty: Honda engines are warranted by Honda for a period of 2 years against manufacturer defect. Kawasaki engines are warranted by Kawasaki for a period of 2 years against manufacturer defect. All other components (except wear items) are warranted by NuSource Enterprises, LLC for a period of 3 years.

This warranty does not apply to damage or defect caused by accident, misuse, negligence, fire or to any NuSource product which has been serviced or repaired by other than an authorized NuSource Service Distributor or NuSource factory personnel. This warranty is void if products are used for any purpose other than that which was intended. There are no other warranties expressed or implied. In no event shall NuSource be liable for incidental or consequential damages or any damage to person or property. (Please note some states do not allow the exclusion or limitations for incidental and consequential damages.)

NuSource Enterprises, LLC
A 4699 61st Street Suite C
Holland, MI 49423
Phone- 616 335 5401 / Fax- 616 335 5901
www.nusourcecorp.com