



Electronic Service Manuals

This electronic document is provided as a service to our customers. We do not create the contents of the information contained in this document. Should you have detailed questions pertaining to the information contained in this document, you may contact Michco, or the manufacturer which provided the original information in this electronic deliverable. Michco's only part in this electronic deliverable was the electronic assembly process. By providing this manual on line we are not guaranteeing parts availability.

You may contact Michco through the following methods:

Phone (517) 484-9312 or (800) 331-3339

2011 N. High St. -- Lansing, Michigan -- 48906

Fax: (517) 484-9836

Email: CustServe@Michco.com

Web site: www.Michco.Com

Parts Web site: www.FloorMachineParts.Com

Order Parts on Line at:

www.FloorMachineParts.Com

Directly to Parts & Service:

By Email: **Shop@Michco.com**

By Fax: (517) 702-2041

By Voice: Use numbers above.

Serving the Cleaning Industry Since 1922

Notice: All copyrighted material remains property of original owners, all trademarks are property of respective owners. Manuals are subject to Manufacturer's reproduction limitations. Originals or reproductions were provided by manufacturers through a request. We make no warranty as to the correctness of information provided in this document and you assume all risk. By placing these manuals on line we are not declaring our corporation to be an manufacturer authorized dealer or provider, please check our web site for authorized manufacturers we represent.



645 E. 7th ST., ST. PAUL, MINN. 55106
 TELEPHONE (612) 771-5581
 TELEX NO. 29-7403

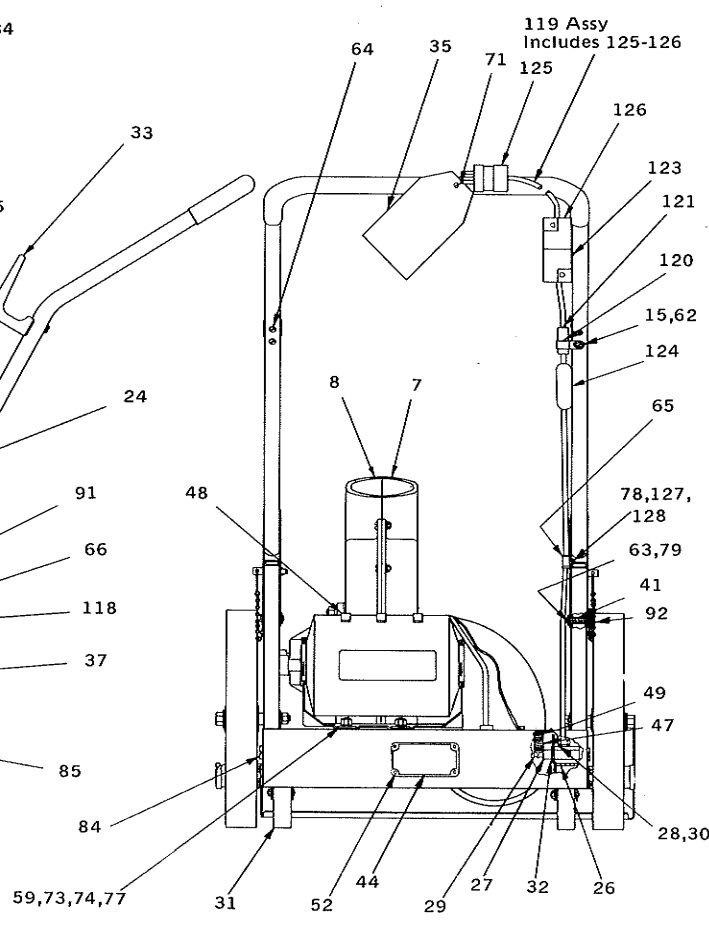
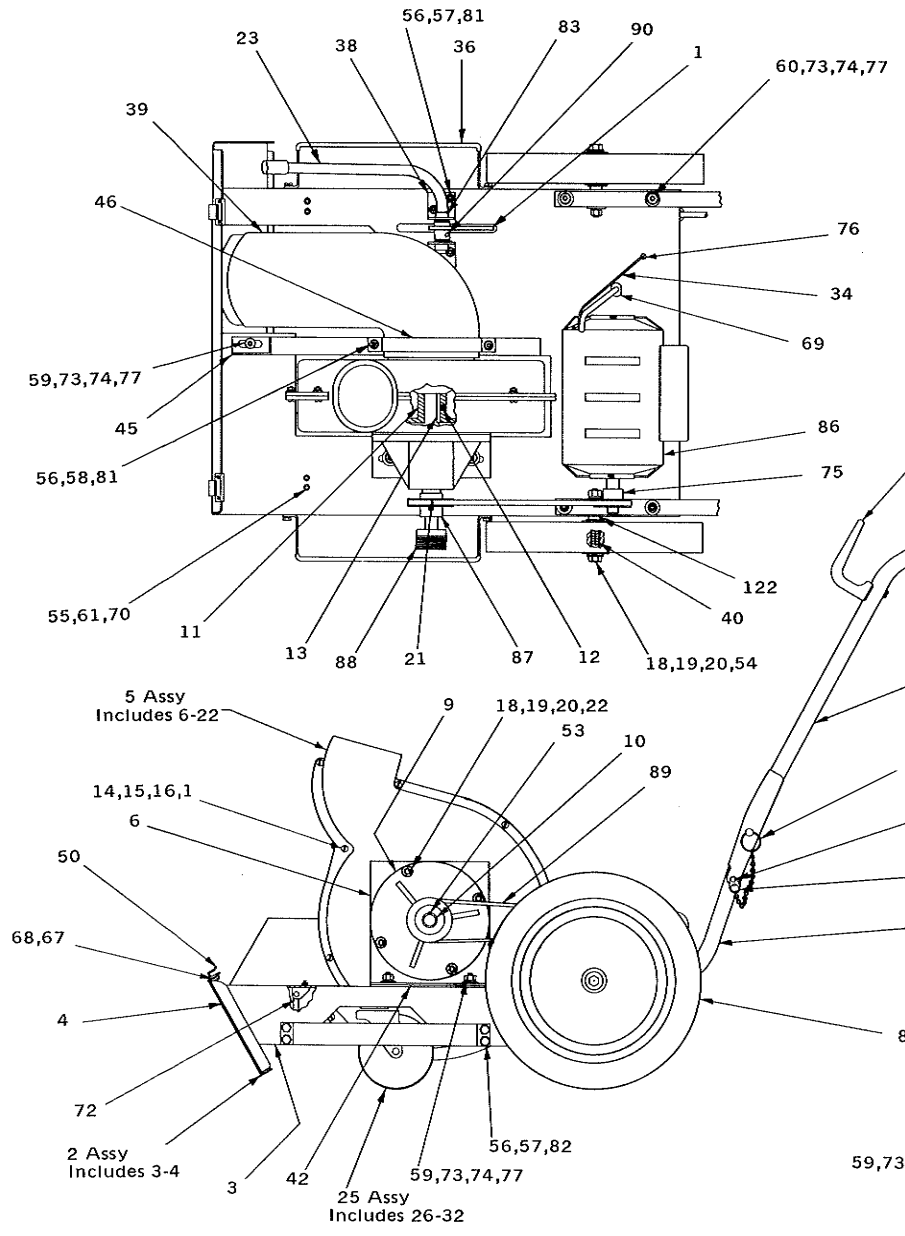
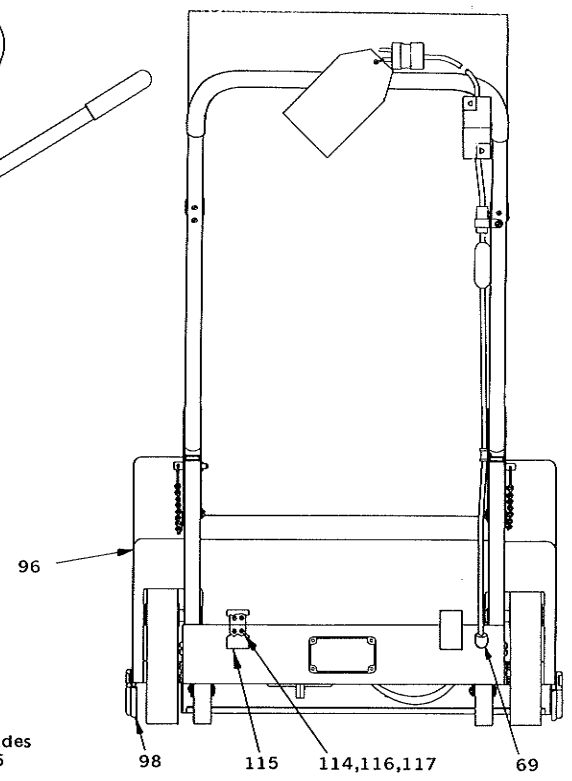
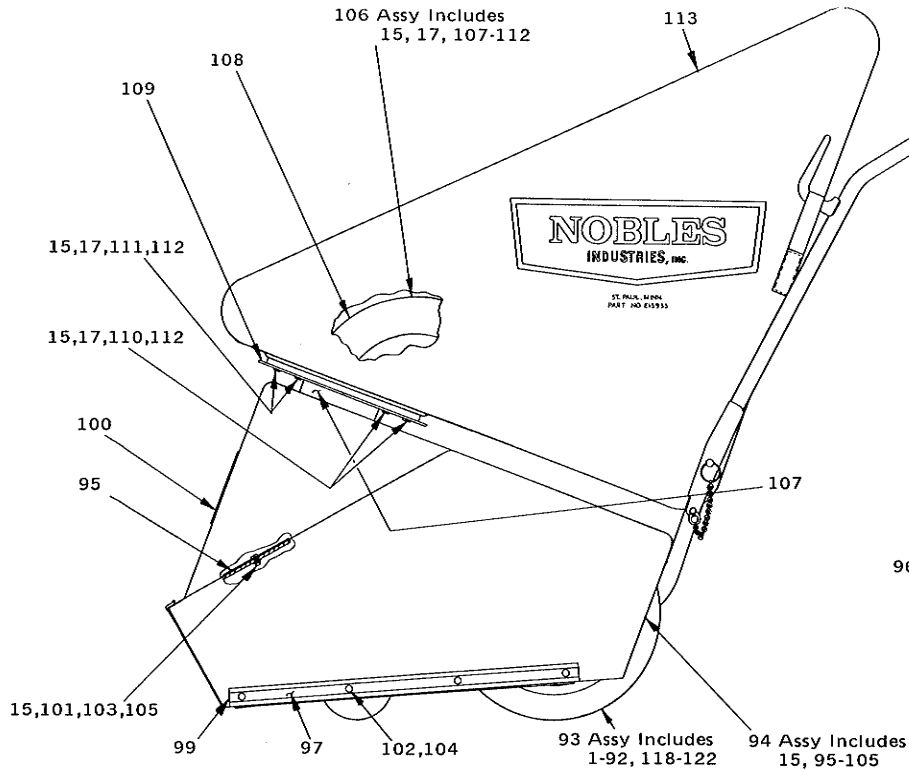
PARTS BREAKDOWN
SUPER CARPET VAC ASSEMBLY E-16499
 New Turbine starts with Serial # 1600, Item 5

NO.	ORDER BY	QTY.	DESCRIPTION
1	B15913	1	Assy - Sleeve & Cam
2	C15970	1	Assy - Base & Gasket (includes 3,4)
3	D15915	1	Assy - Base & Front Plate
4	C15966	1	Gasket
5	C21624	1	Assy - Turbine (includes 6 through 22) (replaces old turbine)
6	C15923	1	Bracket, Turbine
7	D21427	1	Turbine, Intake (half))
8	D21428	1	Turbine, Bearing (half)) Matched Set
9	C15960	1	Mount, Turbine Bearing
10	B15961	1	Shaft, Turbine
11	C15962	1	Fan, Turbine
12	K9558-6	2	Screw, Set
13	K9566-24	1	Key
14	K2871-10	8	Washer, Flat
15	K2964-10	20	Washer, Lock
16	K4770-14	8	Screw, Pan Hd.
17	K5035	14	Nut
18	K6066	6	Nut
19	K14880-6	8	Washer, Flat
20	K14881-6	6	Washer, Lock
21	K15972	2	Bearing
22	K15974-10	4	Screw, Flat Hd.
23	B16167	1	Assy - Handle
24	C16467	1	Assy - Handle & Brackets
25	C16468	1	Assy - Carriage (includes 26 through 32)
26	C15931	1	Assy - Caster Bracket & Rod
27	A15930	1	Pin
28	K2833	2	Nut, Hex
29	K5577	1	Pin, Roll
30	K14180-8	2	Washer, Lock
31	K18397	2	Caster
32	K15996	2	E-Ring
33	C3977	2	Holder, Cord
34	A5065	1	Wire, Ground
35	A13086	1.	Tag
36	C15900	2	Bracket
37	C15901	2	Handle, Lower
38	B15910	2	Bracket
39	B15957	1	Tube
40	A15963	2	Spacer, Wheel
41	A15964	2	Spacer, Handle
42	A15980	1	Spacer
43	B22084	1	Cord, Power (Includes 123, 124)
44	A16000	1	Nameplate
45	C16011	1	Brace, Turbine
46	B16012	1	Clamp, Hose
47	A16469	1	Spring
48	A16588	3	Strip, Foam
49	A16470	2	Retainer, Spring
50	B16575	2	Clip Cover
52	K9437	4	Drivescrews
53	K9566-30	1	Key
54	K2949-30	2	Screw, Hex Hd.
55	K2964-06	4	Washer, Lock
56	K2964-14	14	Washer, Lock
57	K2998-4	12	Screw, Hex. Hd.
58	K2998-5	2	Screw, Hex. Hd.

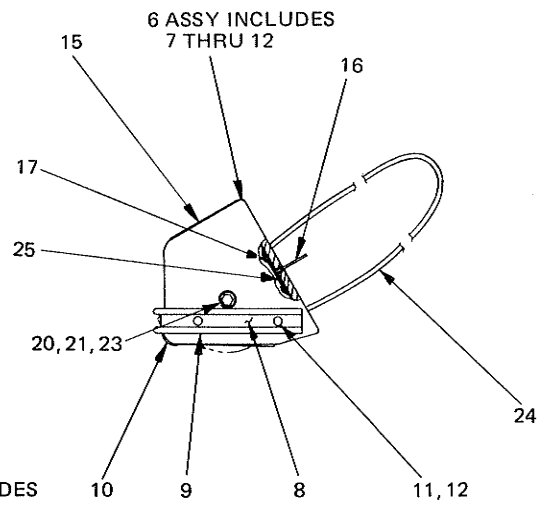
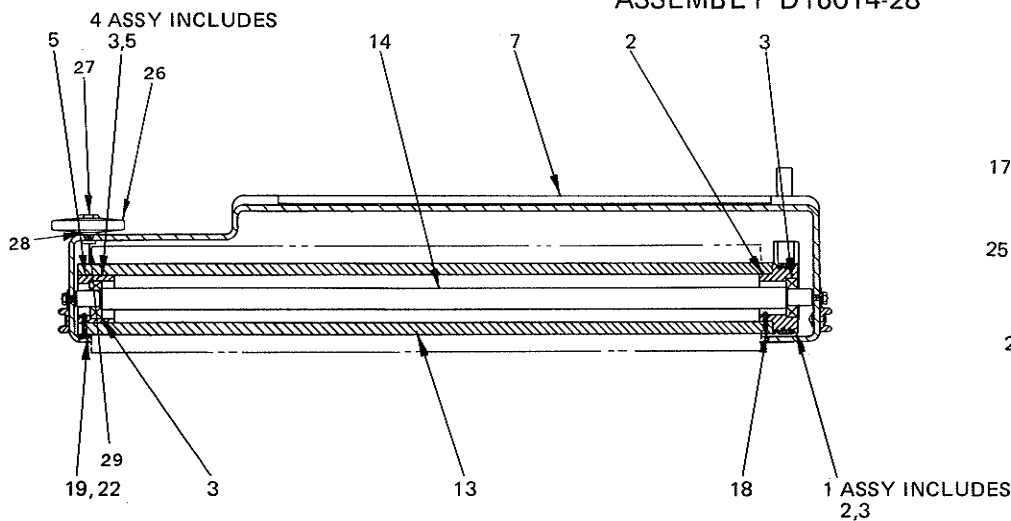
PRICES ON REQUEST

NO.	ORDER BY	QTY.	DESCRIPTION
59	K3036-12	8	Screw, Hex. Hd.
60	K3036-24	4	Hex. Hd. Cap Screw
61	K3069	4	Nut, Hex.
62	K5025-18	1	Screw, Round Head
63	K5025-22	2	Screw, Round Head
64	K5090-16	3	Screw, Oval Head
65	K5853	1	Clamp, Tube
66	K6012	2	Nut, Cap
67	K17528	4	Nut, Hex
68	K12580-6	4	Screw, Flat Hd.
69	K12713	2	Reliever, Strain
70	K12716-6	4	Screw, Pan Hd.
71	K13087	1	Clip
72	K13106	2	Latch
73	K14880-5	12	Washer, Flat
74	K14881-5	12	Washer, Lock
75	K14993	1	Pulley
76	K5114-6	1	Screw, Pan Hd.
77	K15741	12	Nut, Hex.
78	K6032-8	1	Screw, Pan Hd.
79	K15770-10	2	Washer, Flat
80	K8880	1	Nut, Hex
81	K15857	6	Nut, Hex
82	K15859	4	Nut, Weld-On
83	K15984	2	Bushing
84	K15986	2	Screw, Lock
85	K15987	2	Wheel
86	K15989	1	Motor 3/4 H.P.
87	K15991	1	Pulley
88	K15992	1	Pulley
89	K15994	1	Belt
90	K16001	1	1/4" Roll Pin
91	K16493	2	Pin
92	K16494	2	Chain
93	E15999	1	Assy - Base (includes 1 through 92, 118, 119, 120, 121, 122)
94	D16004	1	Assy - Cover (includes 15, 95 through 105)
95	C15906	1	Plate, Indicator
96	E15922	1	Cover
97	B15926	2	Retainer, Side
98	B15932	2	Angle
99	B15937	2	Bumper
100	B16475	1	Decal
101	K10652	4	Nut, Hex
102	K2871-6	8	Washer, Flat
103	K4770-10	4	Screw, Pan Head
104	K6001-36	8	Rivet
105	K6306-3	4	Washer, Flat
106	C16498	1	Assy - Bag Adapter (includes 15, 17, 107 through 112)
107	D15933	1	Adapter, Bag
108	D15936	1	Deflector
109	C16340	1	Plate
110	K4770-8	4	Screw, Pan Hd.
111	K4770-10	2	Screw, Pan Hd.
112	K6306-3	6	Washer, Flat
113	E15935	1	Bag
114	K2964-04	8	Lockwasher
115	K12465	2	Latch
116	K12563	8	Nut, Hex
117	K12580-9	8	Screw, Flat Head
118	K16852	2	Tab
119	B22083-100	1	Cord, Power (includes 125, 126)
120	A12493	1	Clamp, Cord
121	A12712	1	Tubing, Vinyl
122	A18264	2	Spacer, Wheel
123	K22085	1	Plug, Male
124	A18803	1	Switch
125	K5060	1	Plug, Male
126	K18505	1	Plug, Female
127	K2964-8	1	Lockwasher
128	K8880	1	Nut Hex

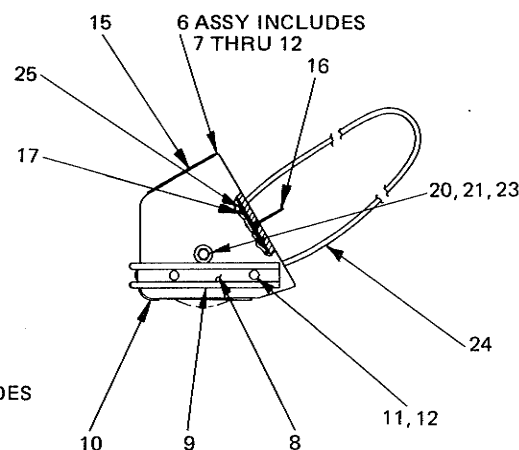
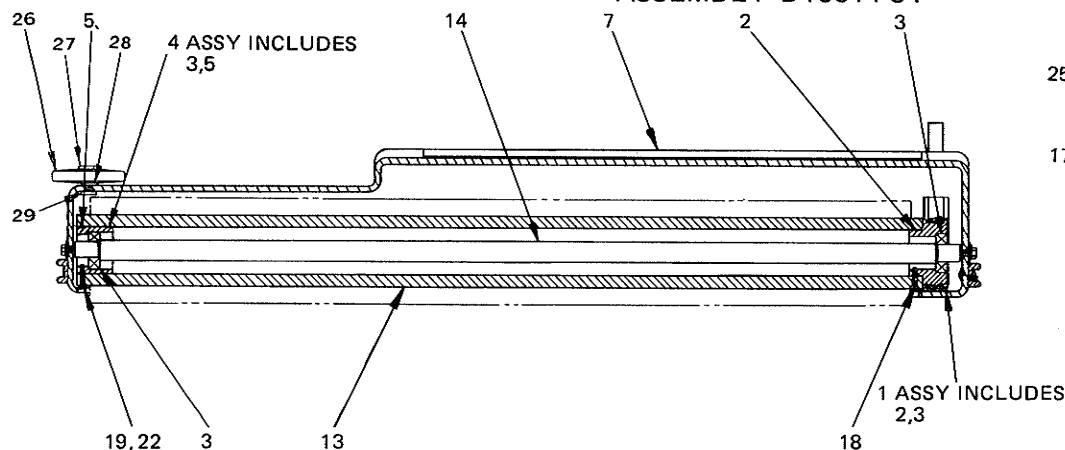
PRICES ON REQUEST



ASSEMBLY D16014-28



ASSEMBLY D16014-34



PARTS BREAKDOWN ASSEMBLY D16014-28

NO.	ORDER BY	QTY.	DESCRIPTION
1	A16007	1	Assy - Pulley & Bearing (includes 2,3)
2	B16006	1	Pulley
3	K16008	2	Bearing
4	A16010	1	Assy - Housing & Bearing (includes 3,5)
5	B16009	1	Housing
6	D16574-28	1	Assy - Head & Bumper (includes 7 through 12)
7	D15924-28	1	Head
8	C15927	1	Retainer, Head
9	C15948	1	Bumper
10	B16407-28	1	Plate, Bottom
11	K2871-6	10	Washer, Flat
12	K6001-36	10	Rivet
13	D15898-28	1	Brush
14	B15967-28	1	Shaft, Brush
15	C16476	1	Decal
16	B16573	2	Bracket, Head
17	K2539-7	8	Screw, Flat Hd.
18	K2539-14	3	Screw, Flat Hd.
19	K2964-10	3	Washer, Lock
20	K2964-14	2	Washer, Lock
21	K2998-8	2	Screw, Hex. Hd.
22	K4770-14	3	Screw, Pan Hd.
23	K6306-4	2	Washer, Flat
24	K15993	1	Belt, Poly-V
25	K16015	4	Nut, Speed
26	K3154	1	Wheel, Bumper
27	A4983	1	Screw, Shoulder
28	K2871-516	1	Washer, Flat
29	K17809	1	Nut

PARTS BREAKDOWN ASSEMBLY D16014-34

NO.	ORDER BY	QTY.	DESCRIPTION
1	A16007	1	Assy - Pulley & Bearing (includes 2,3)
2	B16006	1	Pulley
3	K16008	2	Bearing
4	A16010	1	Assy - Housing & Bearing (includes 3,5)
5	B16009	1	Housing
6	D16574-34	1	Assy - Head & Bumper (includes 7 through 12)
7	D15924-34	1	Head
8	D15928	1	Retainer, Head
9	C15938	1	Bumper
10	B16407-34	1	Plate, Bottom
11	K2871-6	10	Washer, Flat
12	K6001-36	10	Rivet
13	D15898-34	1	Brush
14	B15967-34	1	Shaft, Brush
15	C16477	1	Decal
16	B16573	2	Bracket, Head
17	K2539-7	8	Screw, Flat Hd.
18	K2539-14	3	Screw, Flat Hd.
19	K2964-10	3	Washer, Lock
20	K2964-14	2	Washer, Lock
21	K2998-8	2	Screw, Hex. Hd.
22	K4770-14	3	Screw, Pan Hd.
23	K6306-4	2	Washer, Flat
24	K15993	1	Belt, Poly-V
25	K16015	4	Nut, Speed
26	K3154	1	Wheel, Bumper
27	A4983	1	Screw, Shoulder
28	K2871-516	1	Washer, Flat
29	K17809	1	Nut