



## Electronic Service Manuals

This electronic document is provided as a service to our customers. We do not create the contents of the information contained in this document. Should you have detailed questions pertaining to the information contained in this document, you may contact Michco, or the manufacturer which provided the original information in this electronic deliverable. Michco's only part in this electronic deliverable was the electronic assembly process. By providing this manual on line we are not guaranteeing parts availability.

You may contact Michco through the following methods:

Phone (517) 484-9312 or (800) 331-3339

2011 N. High St. -- Lansing, Michigan -- 48906

Fax: (517) 484-9836

Email: [CustServe@Michco.com](mailto:CustServe@Michco.com)

Web site: [www.Michco.Com](http://www.Michco.Com)

Parts Web site: [www.FloorMachineParts.Com](http://www.FloorMachineParts.Com)

Order Parts on Line at:

**[www.FloorMachineParts.Com](http://www.FloorMachineParts.Com)**

Directly to Parts & Service:

By Email: **[Shop@Michco.com](mailto:Shop@Michco.com)**

By Fax: (517) 702-2041

By Voice: Use numbers above.

**Serving the Cleaning Industry Since 1922**

Notice: All copyrighted material remains property of original owners, all trademarks are property of respective owners. Manuals are subject to Manufacturer's reproduction limitations. Originals or reproductions were provided by manufacturers through a request. We make no warranty as to the correctness of information provided in this document and you assume all risk. By placing these manuals on line we are not declaring our corporation to be an manufacturer authorized dealer or provider, please check our web site for authorized manufacturers we represent.

# NOBLES

INDUSTRIES, INC.

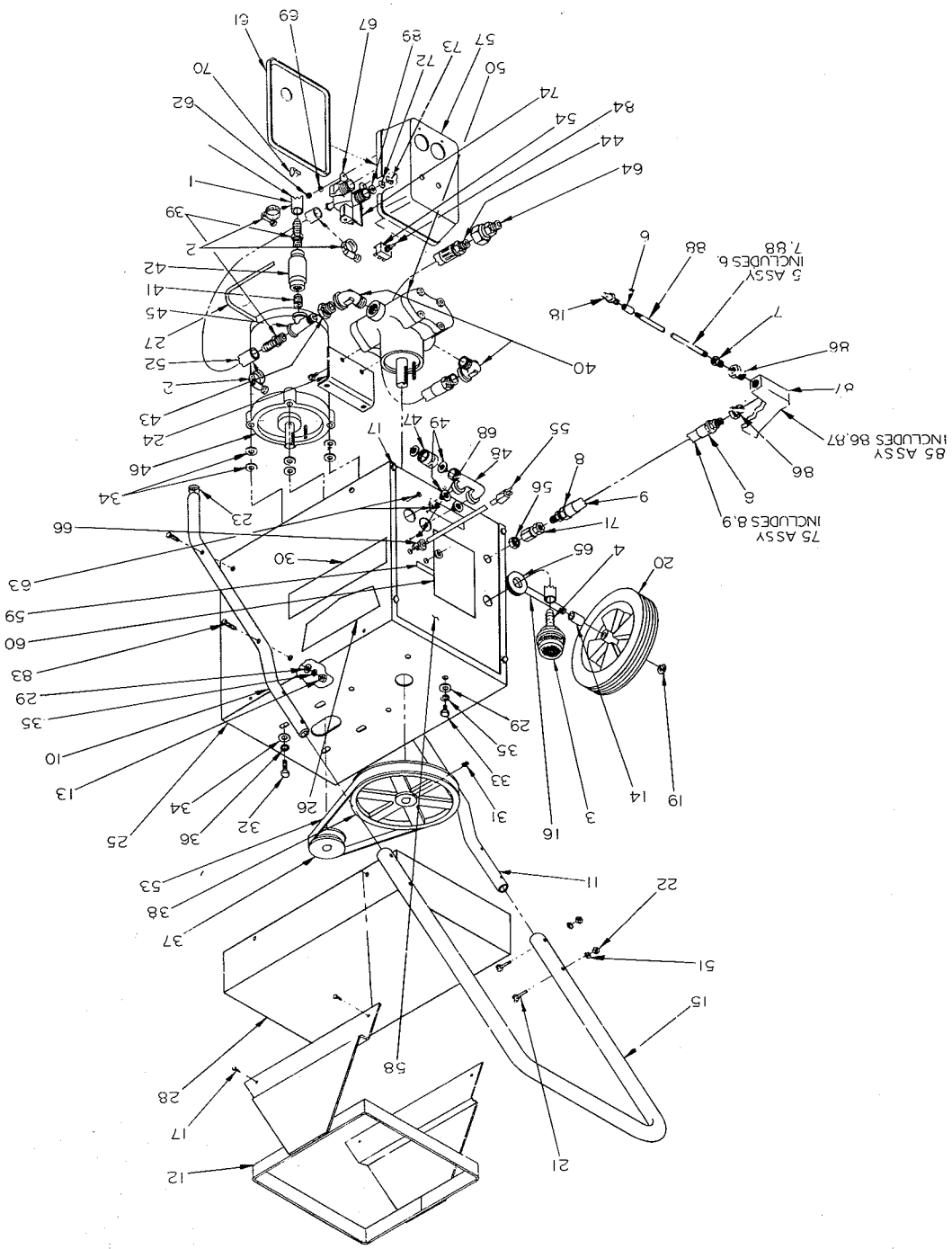
645 E. 7th ST., ST. PAUL, MINN. 55106  
 TELEPHONE (612) 771-5581  
 TELEX NO. 29-7403

FORM 271-9771  
 EFFECTIVE APRIL 1, 1976  
 E.E.O. EMPLOYER M/F  
 REVISED 9-2-77

## PARTS BREAKDOWN – MODEL 702 PRESSURE WASHER

NO.	PART NO.	QTY.	DESCRIPTION	NO.	PART NO.	QTY.	DESCRIPTION	NO.	PART NO.	QTY.	DESCRIPTION
1	K14894-60	1	Tube, Mix	34	K14880-6	12	Washer, Flat	61	K14908-1	1	Lid, Electric Box for (703)
2	K14895	3	Clamp, Hose	35	K14881-5	8	Washer, Lock	62	K8880	3	Nut, Hex (Zinc Plated) for (702)
3	K14911	1	Screen, Bell	36	K14881-6	4	Washer, Lock	62	K8880	7	Nut, Hex (Zinc Plated) for (703)
4	K15096	1	Adaptor, Barbed	37	K14882	1	Pulley	63	K6032-8	2	Screw, Pan Head (Zinc Plated) for (702)
5	B15728	1	Assy, 18" Wand	38	K14883	1	Pulley for (702)	63	K6032-8	4	Screw, Pan Head (Zinc Plated) for (703)
6	K14935	1	Coupling	38	K14963	1	Pulley for (703)	64	K14863	1	Discharge, Swivel
7	K14934	1	Bushing	39	K14884	2	Adaptor, Barbed	65	K14864	1	Grommet
8	K14944	2	Coupling, Hose	40	K14885	2	Elbow, 90° Street	66	K14865	1	Strain Relief
9	K14945-25	1	Hose, Pressure	41	K14886	1	Nipple, Close	67	K14869	1	Valve, Dual for (702)
10	C18543-W-2	1	Leg R.H.	42	K14887	1	Valve, Check	67	K14990	1	Valve, Dual for (703)
11	C18543-W-1	1	Leg L.H.	43	K14889	1	Bushing	68	K6032-6	1	Screw, Pan Hd.
12	C18547-W	1	Assy Jug Holder	44	K14890	1	Hose, Discharge	69	K14873	3	Lockwasher for (702)
13	K15741	4	Nut, Hex (Zinc Plated)	45	K14891	1	Tee, Street	69	K14873	7	Lockwasher for (703)
14	A14949	2	Spacer, Axle	46	K14893	1	Motor, ¼ H.P. for (702)	70	K14910	2	Latch, Electric Box
15	D18544-W	1	Handle	46	K15213	1	Motor, 1 H.P. for (703)	71	K15297	1	Coupling, ¼" Pipe (Swivel)
16	A18492	1	Axle, Cart	47	K14898	1	Nut, Swivel	72	K15544	1	Washer, Flow for (702)
17	K14917-8	8	Screw, Thread Cutting	48	K14899	1	Adaptor, Inlet	72	K15547	1	Washer, Flow for (703)
18	K14925	1	Nozzle, 2 G.P.M.-40° Brass for (702)	49	K14900	4	Filter, Washer	73	K15551	1	Ring, Retainer
18	K14927	1	Nozzle, 3 G.P.M.-40° Brass for (703)	50	K14901	1	Pump	74	A14866	1	Wire, White for (702)
19	K15996	2	E-Ring	51	K2964-14	4	Lock Washer	75	B14943	1	Assy, Hose 25'
20	K14956	2	Wheel, Cart	52	K14941-17	1	Hose, Inlet	76	K6032-12	2	Screw Pan Hd (Zinc Plated) for (703)
21	K14957-20	4	Screw, Pan Hd.	53	K14932	1	Belt, 29" for (702)	77	K15082	1	Relay for (703)
22	K14501	4	Nut, Hex (Zinc Plated)	53	K15240	1	Belt for (703)	78	K14996	1	Transformer for (703)
23	K18548	2	Button, Plug	54	A14859	1	Assy, Switch & Wires	79	A15114	1	Wire, (2 Gray, 1 White for 703)
24	B14878	2	Assy, Pump Mount	55	B14860	1	Cord, Power	80	A15005	2	Wire, Brown for (703)
25	D18650-GR	1	Assy, Chassis	56	A14862	1	Panel, Nut	81	A15088	1	Wire, Green for (703)
26	B6742	2	Label, Logo	57	C14867	1	Tray, Electric Box (Use Raw 4818K14908-2) for (702)	82	A15089	1	Wire, White for (703)
27	B14892	1	Harness, Motor	57	C15195	1	Tray, Electric Box (Use Raw 4818K14908-2) for (703)	83	K3036-24	4	Screw, Hex Hd. Cap
28	C14905-W	1	Cover	58	C18648-GR	1	Panel, Front for (702)	84	K18497	1	Tip, Switch
29	K14880-5	8	Washer, Flat	58	C18655-GR	1	Panel, Front for (703)	85	C15748	1	Assy-Handle – Non Remote
30	B18653	2	Decal, Speedspray	59	A14874	1	Label, Control Toggle	86	K15499	2	Bushing
31	K9558-8	1	Screw, Set	60	A14875	1	Label, Instructions	87	K15749	1	Handle – Non Remote
32	K2949-8	4	Screw, Hex Hd. Cap (Zinc Plated)	61	C14907	1	Lid, Electric Box (Use Raw 4818K14908-1) for (702)	88	B14936	1	Wand, Tube
33	K3036-12	4	Screw, Hex Hd. Cap (Zinc Plated)					89	K17279	1	Washer, Backup

# PARTS BREAKDOWN MODEL 702 PRESSURE WASHER



## ASSEMBLY INSTRUCTION

1. Remove parts from shipping carton, handle (#15), wand assy (#5) and main unit.
  2. Assemble grease gun to the grease tube and force into the fitting located in the middle of the pump. Apply grease every 100 hours.
  3. Insert mix tube assy (parts 1, 3, 4—through grommetted hole in the front panel and slide it onto the barbed fitting extending from check valve (#42). Tighten in place with hose clamp (#2).
  4. Assemble inlet adaptor (#48) and swivel nut (#47) using screen washers #49 illustrated. Tighten adaptor (#48) to the two inlet parts of dual valve (#67). Finger tighten only. Do not use wrench.
  5. Assemble handle assy (#85) to pressure hose assy (#75) and tighten hose assy (#75) into swivel coupling (#71) on front of machine.
  6. Loosen screws #83 four places which hold lower legs to chassis.
  7. Slide handle (#15) into lower handle assy (#10 & #11) and secure with nuts and screws (21, 22, 51) then retighten #83 (4) screws.
  8. Hook up to water supply, electric outlet, and place dip tube into chemical solution.
- You are ready to make things clean.

## WIRING DIAGRAM FOR 702

