



Electronic Service Manuals

This electronic document is provided as a service to our customers. We do not create the contents of the information contained in this document. Should you have detailed questions pertaining to the information contained in this document, you may contact Michco, or the manufacturer which provided the original information in this electronic deliverable. Michco's only part in this electronic deliverable was the electronic assembly process.

You may contact Michco through the following methods:
Phone (517) 484-9312 or (800) 331-3339 MI, OH, IN only
2011 N. High St. -- Lansing, Michigan -- 48906
Fax: (517) 484-9836
Email: CustServ@Michco.com
Web site: www.Michco.Com
Parts Web site: www.FloorMachineParts.Com

Order Parts on Line at:
www.FloorMachineParts.Com

Directly to Parts & Service:
By Email: **Shop@Michco.com**
By Fax: (517) 702-2041
By Voice: Use numbers above.

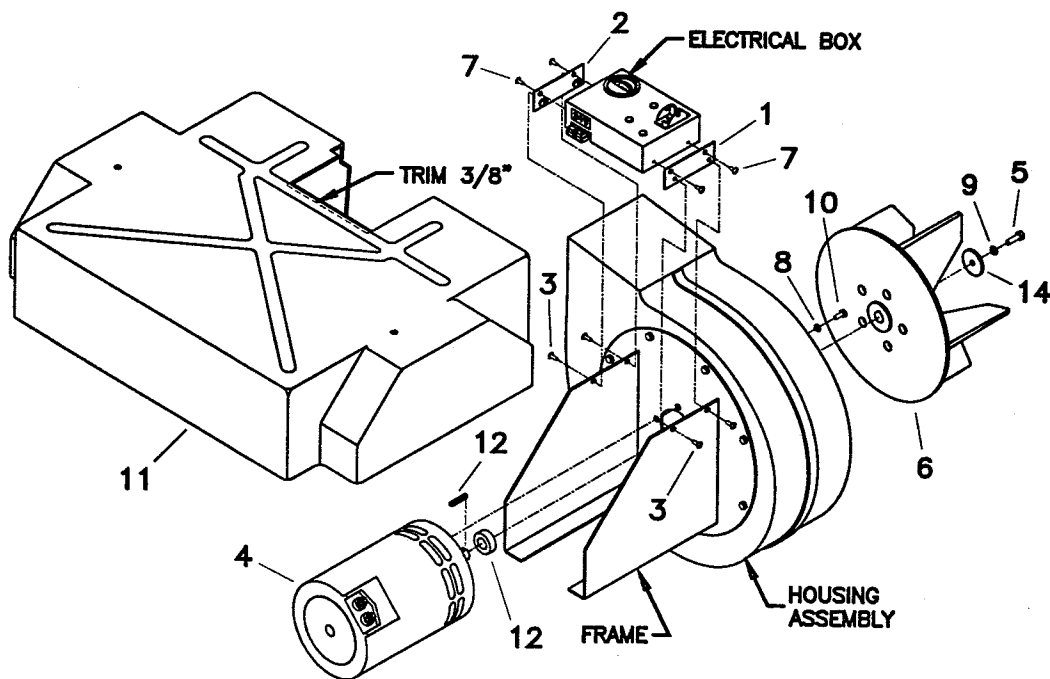
Serving the Cleaning Industry Since 1922

Notice: All copyrighted material remains property of original owners, all trademarks are property of respective owners. Manuals are subject to Manufacturer's reproduction limitations. Originals or reproductions were provided by manufacturers through a request. We make no warranty as to the correctness of information provided in this document and you assume all risk.

Minuteman[®]

Parker[®]

REPLACEMENT MOTOR KIT K - BATVAC - 1 FOR VAC 35 BATTERY POWERED MODEL PV-7201-BP



PARTS LIST

Item	Part No.	Qty.	Description
1	350271	1	Spacer, Cover Right
2	350272	1	Spacer, Cover Left
3	710154	4	SCR-MC 10-32 x 9/16" SS
4	742329	1	Motor, 24V 1.6 HP 3000 rpm
<i>EXISTING PARTS TO BE REUSED</i>			
5	60-516-16	1	BLT-HH 5/16-18 x 1" GR5
6	61-14-E	1	Fan Wheel 3/4" Bore
7	711144	4	SCR-ST-F 10-24 x 1/2"
8	711544	4	WSR-Helical 1/4
9	711545	1	WSR-Helical 5/16
10	713001	4	BLT-HH 1/4-20 x 5/8" GR5
11	72-111-D	1	Deck, Battery Vac
12	73-20-A	1	Spacer, 3/4" Shaft
13	74-83-A	1	Key, Square 3/16" x 1 3/8"
14	82-138-B-1	1	Special Washer

PROCEDURE

1. Remove the deck (11) from the machine. Trim 3/8" from the rear edge of the opening as shown.
2. Remove the front plate assembly (not shown) from the front of the housing assembly.
3. Detach the fan wheel (6) from the old motor by removing the bolt (5), lock washer (9) and special washer (14).
4. Disconnect the wires to the old motor. Remove the (4) bolts (10) and lock washers (8) that mount the motor to the frame and housing assembly. Remove the square key (13) and shaft spacer (12) from the old motor. Remove the old motor and discard.
5. Detach the electrical box from the frame by removing (4) self-tapping screws (7).
6. Attach the right cover spacer (1) to the right inside of the frame and the left cover spacer (2) to the left inside of the frame as shown using (4) machine screws (3). Attach the electrical box to the cover spacers by reusing the (4) self-tapping screws (7).
7. Install the shaft spacer (12) and square key (13) onto the new motor (4). Mount the new motor to the frame and housing assembly using (4) bolts (10) and lock washers (8). Connect the wires to the terminals on the motor - red to positive (+), black to negative (-).
8. Attach the fan wheel (6) to the motor using a bolt (5), lock washer (9) and special washer (14). Apply thread locking compound to the threads of the bolt. Torque the bolt to 18-22 ft./lbs.
9. Reinstall the front plate assembly (not shown).
10. Reinstall the deck (11).

Tools Required:

7/16" wrench, ratchet wrench, 7/16" socket, 1/2" socket torque wrench, Phillips screwdriver, coping saw or equivalent.

Materials:

Thread locking compound

Minuteman[®]
Parker[®]

Parker Sweeper Company
A Division of Minuteman International, Inc.

111 South Rohlwing Road
Addison, Illinois 60101
Phone: (630) 627-6900
Fax: (630) 627-1130