



## Electronic Service Manuals

This electronic document is provided as a service to our customers. We do not create the contents of the information contained in this document. Should you have detailed questions pertaining to the information contained in this document, you may contact Michco, or the manufacturer which provided the original information in this electronic deliverable. Michco's only part in this electronic deliverable was the electronic assembly process. By providing this manual on line we are not guaranteeing parts availability.

You may contact Michco through the following methods:

Phone (517) 484-9312 or (800) 331-3339

2011 N. High St. -- Lansing, Michigan -- 48906

Fax: (517) 484-9836

Email: [CustServe@Michco.com](mailto:CustServe@Michco.com)

Web site: [www.Michco.Com](http://www.Michco.Com)

Parts Web site: [www.FloorMachineParts.Com](http://www.FloorMachineParts.Com)

Order Parts on Line at:

**[www.FloorMachineParts.Com](http://www.FloorMachineParts.Com)**

Directly to Parts & Service:

By Email: **[Shop@Michco.com](mailto:Shop@Michco.com)**

By Fax: (517) 702-2041

By Voice: Use numbers above.

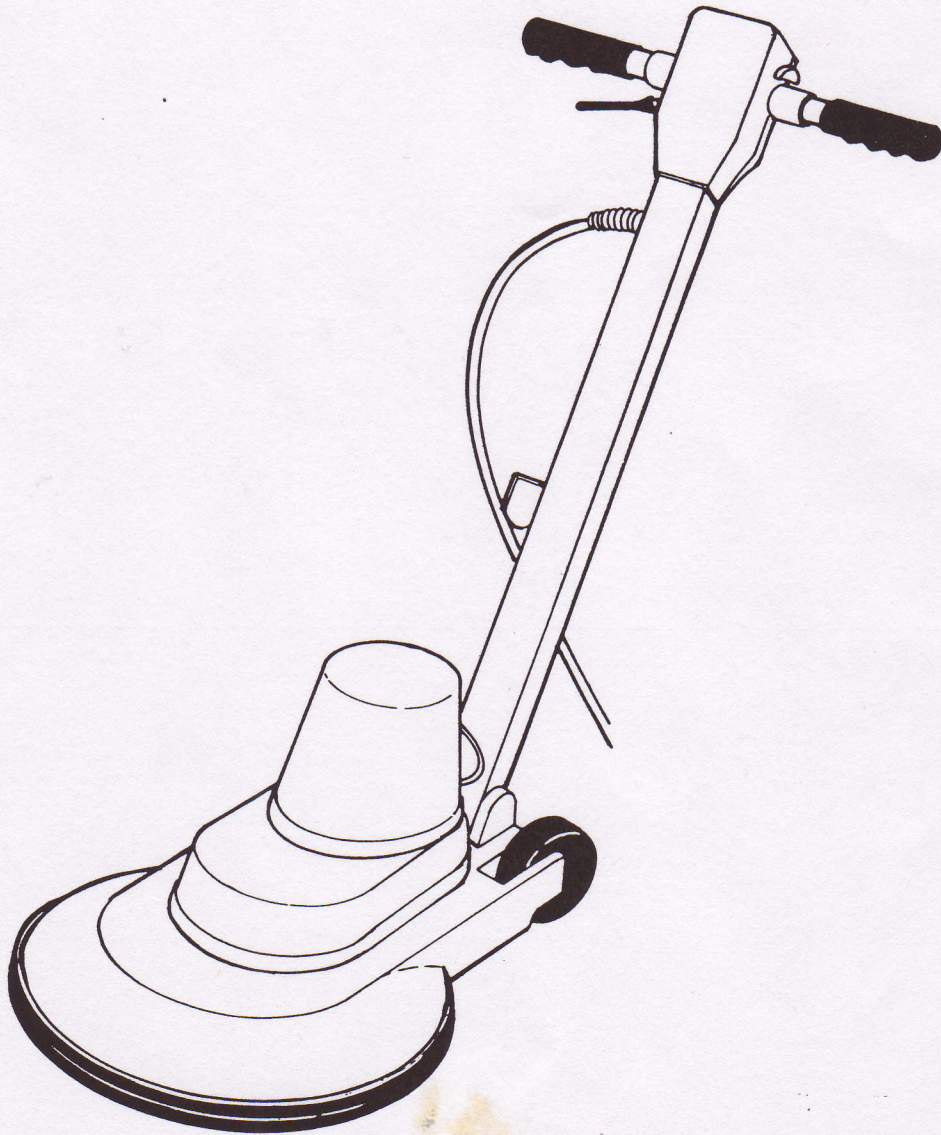
**Serving the Cleaning Industry Since 1922**

Notice: All copyrighted material remains property of original owners, all trademarks are property of respective owners. Manuals are subject to Manufacturer's reproduction limitations. Originals or reproductions were provided by manufacturers through a request. We make no warranty as to the correctness of information provided in this document and you assume all risk. By placing these manuals on line we are not declaring our corporation to be an manufacturer authorized dealer or provider, please check our web site for authorized manufacturers we represent.

# Minuteman Series Floor Machines

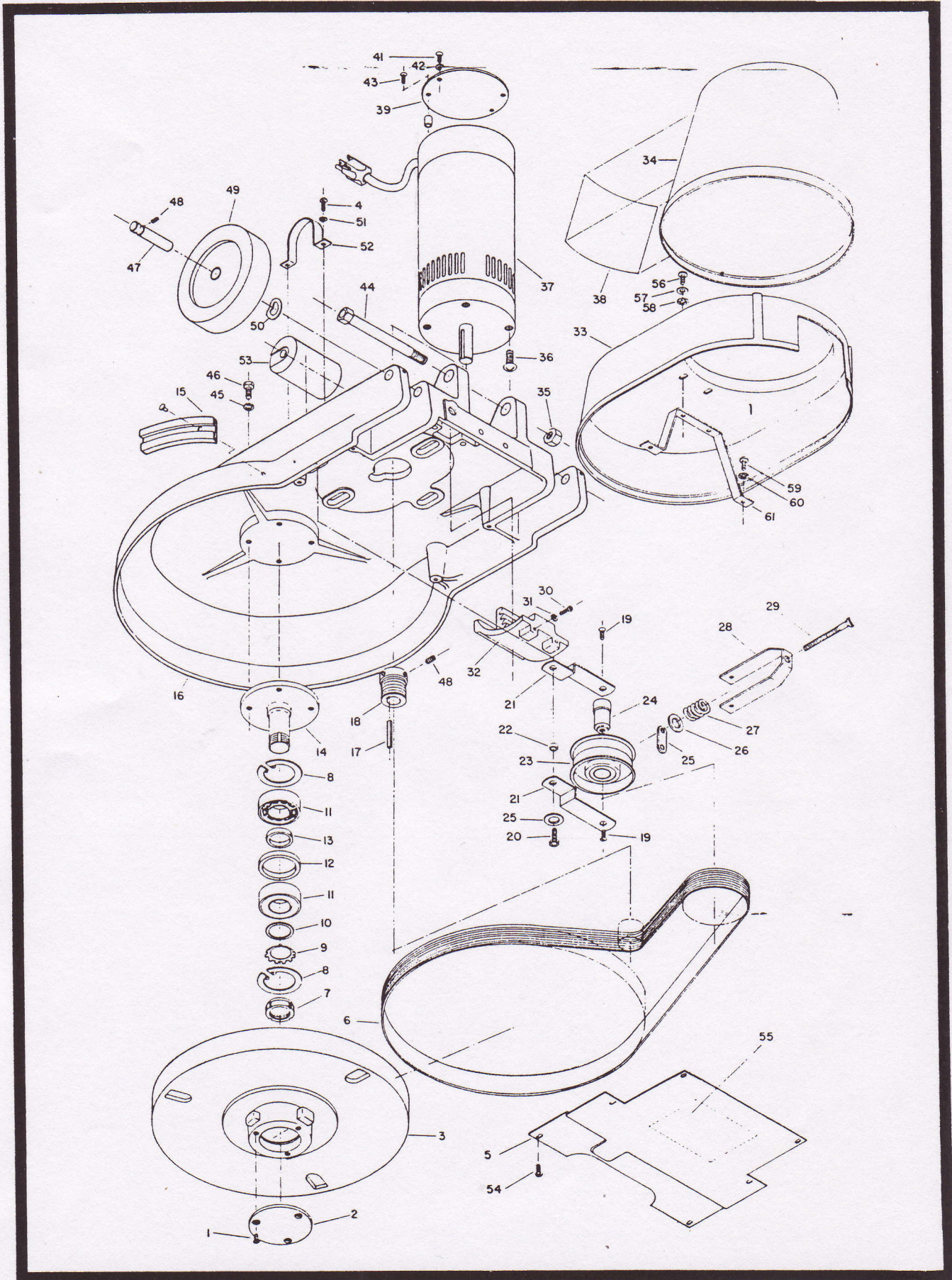
Model: M17200

■ OPERATION ■ SERVICE ■ PARTS ■ CARE



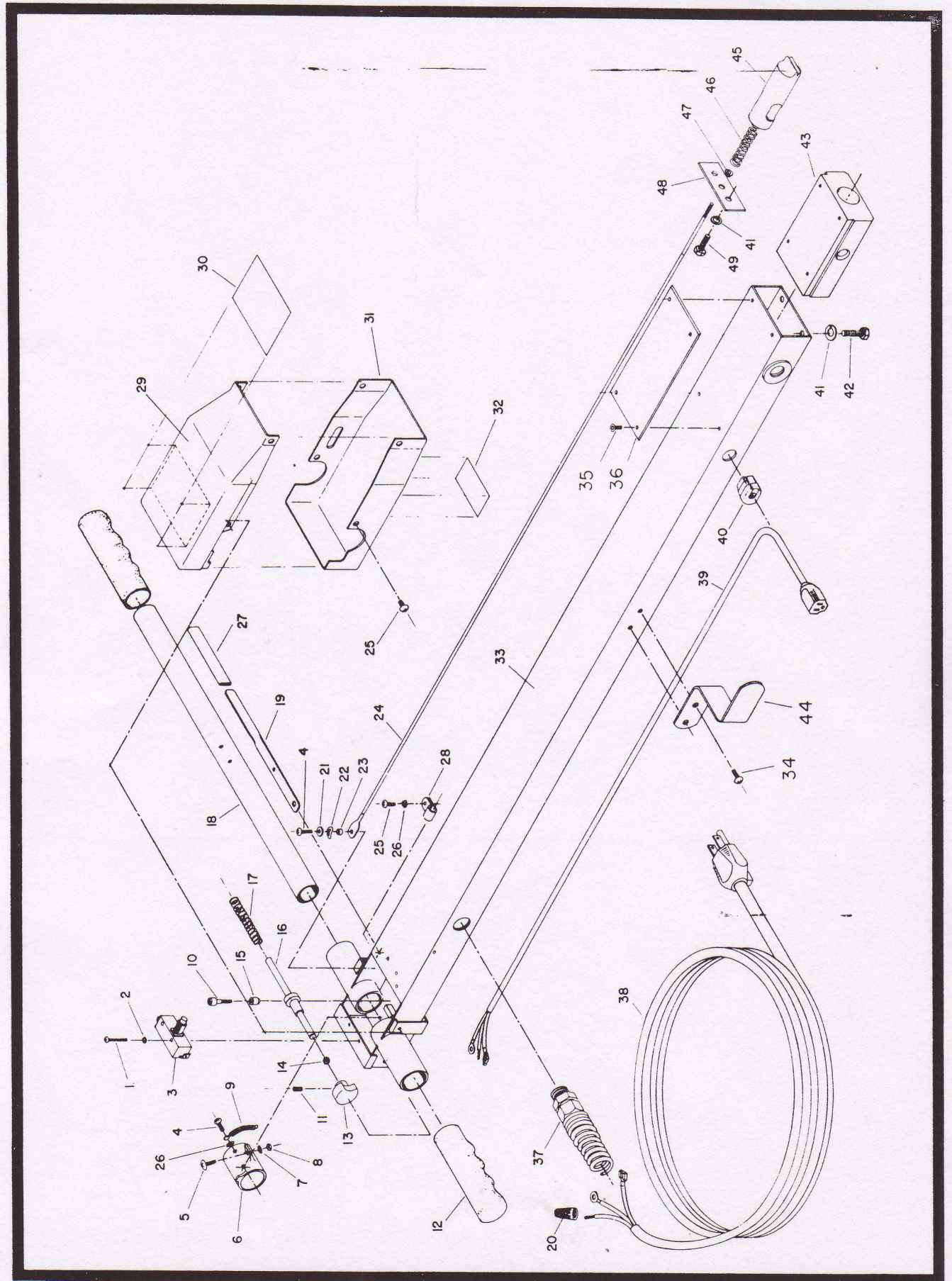
Revised 2/94

**Minuteman**<sup>®</sup>



# PARTS LIST

Item	Part No.	Qty.	Description	Item	Part No.	Qty.	Description
1	710892	3	SCR-SC 8-32 x .37 ST PL	31	711544	4	WSR, Helical SPR LOC 1/4
2	762050PLT	1	Cover, Pulley	32	762154PLT	1	Segment, Handle NIC PLT
3	750087	1	Pulley, Incl. Items 7 - 13	33	762124	1	Cover, Motor Lower
4	710556	2	SCR-MC 10-32 x .75 STPL	34	762123	1	Cover, Motor Upper
5	762122	1	Belt Guard	35	711376	1	Nut-NYLOC 1/2-13
6	762096	1	Belt, Poly Vee	36	710986	4	SCR-SC 3/8-16 x 1.00 ST PL
7	762095	1	Nut, Special	37	762161	1	Motor 115/220
8	762127	2	Ring, Snap	38		1	Decal, logo
9	762094	1	Washer, Lock Special	39	762048	1	Adapter, Motor
10	762105	1	Washer, Flat	40	380061	2	Bushing
11	762093	2	Bearing	41	710355	4	SCR-MC 10-32 x .50 ST PL
12	762106	1	Spacer OD	42	711584	2	WSR, Finish #10
13	762107	1	Spacer ID	44	712012	1	BLT-HH 1.2-13 x 5 ST PL
14	762049MCH	1	Shaft, Idler Pulley	45	711545	4	WSR, Helical SPR LOC 5/16
15	160043	1	Bumper 20"	46	711230	4	BLT-HH 5/16-18 x 1 ST PL
16	762054PTD	1	Housing, 17" Painted	47	762091PLT	2	Axle, Wheel Zinc Plated
18	762102	1	Pulley	48	711011	2	SCR-SK 1/4-20 x .25
19	710903	2	SCR-SC 10-32 x .50 ST PL	49	762056	2	Wheel 5"
20	711204	1	BLT-HH 1/4-20 x .75 ST PL	50	711524	4	WSR, Wave No. 26 ST PL
21	762077PLT	2	Bracket, Idler Pulley	51	711543	4	WSR, Helical SPR LOC #10
22	762073	1	Bushing	52	762051	1	Retainer, Capacitor
23	750564	1	Idler Pulley Assembly	53	740109	1	Capacitor 115/220
24	762068	1	Shaft, Idler Pulley	54	710226	6	SCR-MC 8-32 x .19 SS
25	711419	1	Nut-Weld TP2116 1/4-20	55	715010	1	Decal, Belt Drive
25	711505	1	WSR, Flat 1/4	56	762392	1	Balancing Weight M20
26	711574	1	WSR, Flat 1" OD x .25 ID	59	711713	4	Retaining Ring-E Ext .50
27	762097	1	Spring	60	762242	1	Bracket, Cover
28	762076PLT	1	Bracket, Pulley	61	711502	2	WSR, Flat #8
29	710593	1	SCR MC 1/4-20 x 3.00 ST PL	62	711542	2	WSR, Loc #8
30	711207	4	BLT-HH 1/4-20 x 1 ST PL	63	710329	2	SCR-MC 8-32 x .50 ST PL



# Handle Assembly M20250

Item	Part No.	Qty.	Description	Item	Part No.	Qty.	Description
1	710207	2	SCR-MC 6-32 x .87 ST PL	26	711543	2	WSR, Helical SPR LOC #10
2	711551	2	WSR, Intrl. Tooth LOC #6	27	762236	1	Grip, Lever
3	762100	1	Switch	28	381052	1	Retainer
4	710356	3	MCR-MC 10-32 x .62 ST PL	29	762126	1	Cover, SW Box Rear
5	710556	1	SCR-MC 10-32 x .75 ST PL	30	715062	1	Decal, Warning 2.50 x 3.50
6	762128	1	Lock	31	762125	1	Cover, Front ABS
7	711553	1	WSR, Internal Lock #10	32		1	Decal, Logo
8	711310	1	Hex-Nut 10-32 ST PL	33	750580	1	Handle Tube Weldment
9	762084	1	Spring	34	711125	2	SCR-ST-B #10 x .50
10	712041	1	BLT, SDER 1/4-20 x .56 x .37	35	711105	4	SCR-ST-A 10 x .50 NI
11			SCR, Set 8-32 x 1/8	36	762113	1	Stair Glide
12	762086	2	Grip, Handle	37	150003	1	Relief, Strain 100 x 50
13	762129	1	Button	38	150002	1	Black Cord Set, 14-3 50 ft.
14	762098	1	Bushing	39	762156	1	Cord, Handle
15	762058	1	Spacer	40	740108	1	Strain Relief
16	762143PLT	1	Pin, Switch LOC Zinc PLT	41	711544	6	WSR, Helical SPR LOC 1/4
17	762103	1	Spring	42	711203	4	BLT, HH 1/4-20 x .62
18	762067	1	Tube, Handle	43	762153	1	Guide, Handle Lock
19	762158PLT	1	Lever, Handle Release	44	762182	1	Hook, Cord
20	740005	2	Cap, Wire 18-14 73B	45	762142PLT	1	Lock, Handle
21	711503	1	WSR, Flat #10	46	762149	1	Spring
22	711522	1	WSR, Wave 1/4	47	762060	1	Bushing
23	762059	1	Bushing	48	762159	1	Retainer
24	762119	1	Cable	49	711202	2	Bolt, 1/4-20 x .50 ST PL
25	711124	2	SCR-ST-B 10 x .37 NI				