



Electronic Service Manuals

This electronic document is provided as a service to our customers. We do not create the contents of the information contained in this document. Should you have detailed questions pertaining to the information contained in this document, you may contact Michco, or the manufacturer which provided the original information in this electronic deliverable. Michco's only part in this electronic deliverable was the electronic assembly process. By providing this manual on line we are not guaranteeing parts availability.

You may contact Michco through the following methods:

Phone (517) 484-9312 or (800) 331-3339

2011 N. High St. -- Lansing, Michigan -- 48906

Fax: (517) 484-9836

Email: CustServe@Michco.com

Web site: www.Michco.Com

Parts Web site: www.FloorMachineParts.Com

Order Parts on Line at:

www.FloorMachineParts.Com

Directly to Parts & Service:

By Email: **Shop@Michco.com**

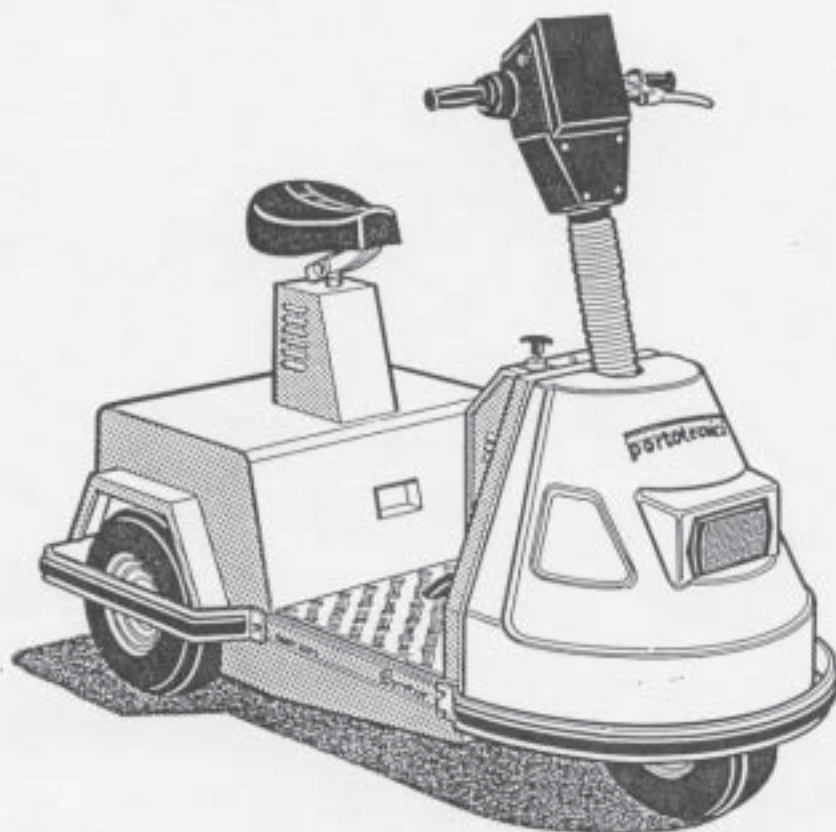
By Fax: (517) 702-2041

By Voice: Use numbers above.

Serving the Cleaning Industry Since 1922

Notice: All copyrighted material remains property of original owners, all trademarks are property of respective owners. Manuals are subject to Manufacturer's reproduction limitations. Originals or reproductions were provided by manufacturers through a request. We make no warranty as to the correctness of information provided in this document and you assume all risk. By placing these manuals on line we are not declaring our corporation to be an manufacturer authorized dealer or provider, please check our web site for authorized manufacturers we represent.

SPARE PARTS LIST
LISTE PIECES DETACHEES
ERSATZTEILLISTE
MANUAL DE REPUESTOS
DISTINTA RICAMBI



TIGER

300S - 500S

ELECTRICAL VEHICLES
VEHICULES ELECTRIQUES
ELEKTROFAHRZEUGE
VEHICULOS ELECTRICOS
VEICOLI ELETTRICI



TABLE N° :
07 01429 007

DESCRIPTION :
OVERALL TIGER 300S 500S

EXPLODED VIEW

DATE :
17.06.98

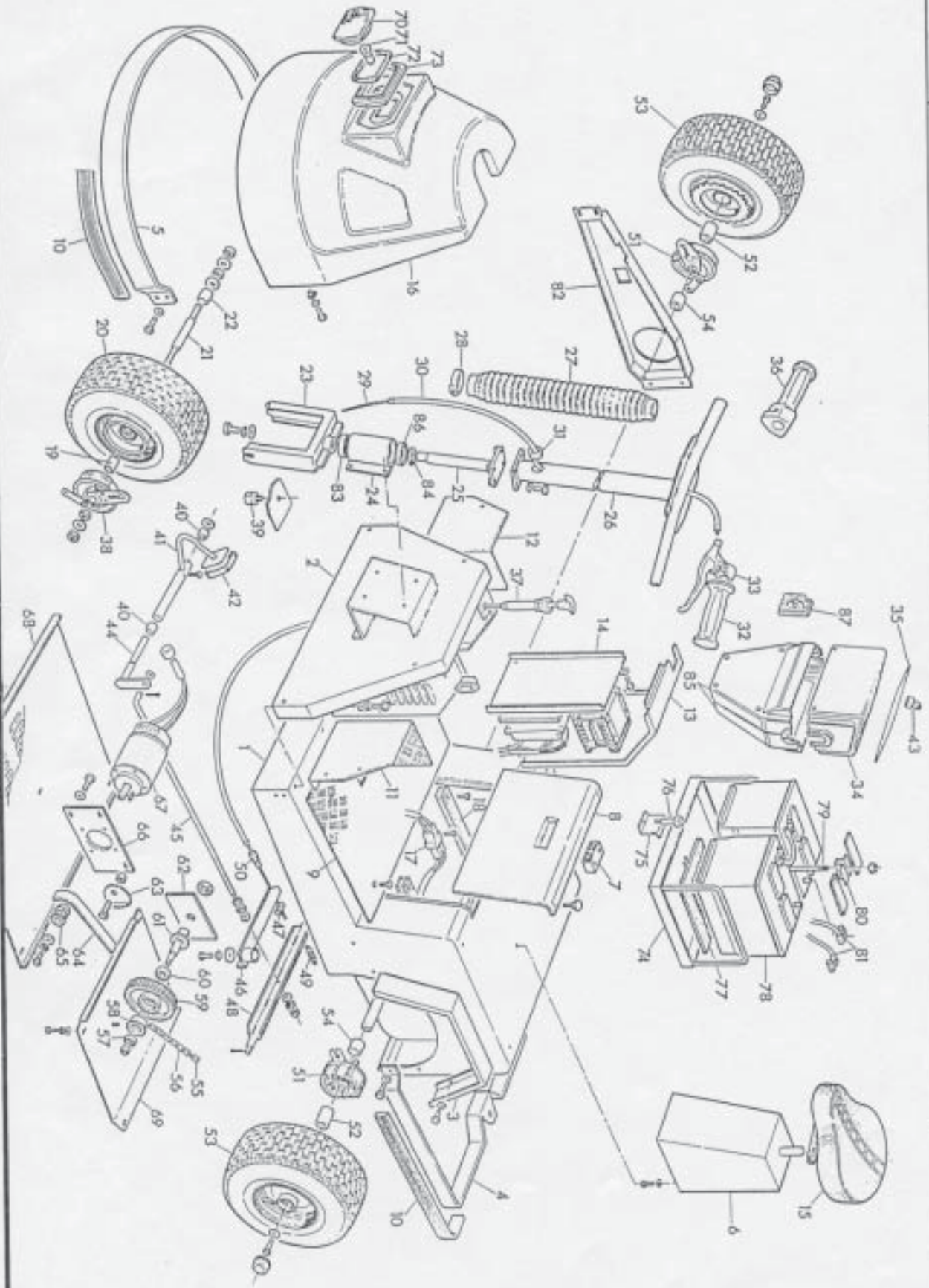


TABLE N° :		DESCRIPTION :		SPARE PARTS LIST			DATE :	
07 01429 007		OVERALL TIGER 300S 500S					17.06.98	
REF. CODE KIT	QTY	DESCRIPTION	DENOMINATION	BESCHREIBUNG	DESCRIPCION	DESCRIZIONE	TECHNICAL FEATURES	NOTES
1	29931	1	BODY	COQUE	KAROSSERIEKORP.	CUERPO	SCocca	TIG.300
2	33111	1	CONTROL BOX	BOITE CONTROLE	STEUERUNG KAST.	CAJITA MANDO	CASSETT.COMANDI	TIG.300 2.V
4	29939	1	BACK BUMPER	PARACHOC PST.	STOSSDAMPFER	P.CHOQUES PST.	PARAURTI POST.	TIG.300
5	29933	1	ANT.BUMPER	PARE CHOC ANT.	STOSSDAMPFER	P.CHOQUES ANT.	PARAURTI ANT.	TIG.300
6	29949	1	SADDLE SUPPORT	SOPORTE SELLE	SATTEL HALTER	SOPORTE SILLIN	SUPPORTO SELLA	TIG.300
7	34038	2	CLOSURE	FERMETURE	VERSCHLUSS	CIERRE	CHIUSURA	L= 73X18
8	29955	1	BOX COVER	COUVERCLE BOITE	KASTENDECKEL	TAPA CAJITA	COPERCHIO CASS.	TIG.300
9	29940	1	PLATE	MARCHESPIED	FUSSBRETT	TARIMA	FEDAMA	TIG.300 AL.A.
10	30857	2,550	BUMPER	PARE-CHOC	STOSSDAMPFER	PARACHOQUES	PARAURTI	31 X 13 EPDM
11	29943	1	PANEL	PANNEAU	TAFEL	PANEL	PANNELLO	TIG.300 SX
12	29942	1	PANEL	PANNEAU	TAFEL	PANEL	PANNELLO	TIG.300 OX
13	33109	1	BOX COVER	COUVERCLE BOITE	KASTENDECKEL	TAPA CAJITA	COPERCHIO CASS.	TIG.300 2V
14	33112	1	JUNCTION BOARD	TARLEAD TERM.	KLEMME BRETT	PLACA BORNES	STAFFA COMP.EL.	TIG.300 2.V
15	29848	1	SADDLE	SEILE	SATTEL	SILLIN	SELLA	PU 2908260
16	36019	1	HOOD	CAPOT	HAUBE	COFRE	COFANO	TIG.300 ARS
17	07039	1	FLUG	GOUPILLE	STIFT	PASADOR	SPINA	E120
18	25715	2	PLATE	PLAT	TELLER	PLATO	FIATTO	PVC 415X30E 5
19	29920	1	SPACER	ENTRETOISE	DISTANZSTUCK	SEPARADOR	DISTANZIALE	D. 25-21 L=42
20	29913	1	WHEEL	ROUE	LAUFRAD	RUEDA	RUOTA LIBERA	D. 13"X5.00/ 6 PS. +TS.
21	29922	1	WHEEL PIN	PIVOT ROUE	RADGAPFEN	PERNO RUEDA	PERNO RUOTA	D.20 L=215 2X014
22	29924	1	SPACER	ENTRETOISE	DISTANZSTUCK	SEPARADOR	DISTANZIALE	D. 25-21 L=37
23	29915	1	WHEEL SUPPORT	SUPPORT ROUE	RAD HALTER	SOPORTE RUEDA	SUPPORTO RUOTA	D.330X153 TIG.
24	35787	1	SUPPORT	SUPPORT	HALTER	SOPORTE	SUPPORTO	TIGER
25	29917	1	LOW STEERING	TUBE DE DIRECT.	LENKSAULE	PLANTON INF.	PIANTONE INF.	TIG.300
26	36037	1	UP STEERING	TUBE DE DIRECT.	LENKSAULE	PLANTON SUP.	PIANTONE SUP.	TIG. 2.V
27	35714	1	PROTECTOR	PROTECTION	SCHUTZ	PROTECCION	PROTEZIONE	D. 95-50E230
28	01874	1	CLAMP	COLLIER	SCHLEIF	ABRAZADERA	FASCETTA	LG 31916 9 X260 M
29	29817	1	CORD	CORDE	KLEINS	CUERDA	CORDA	D. 2 L=1800
30	29816	1	SHEATH	GAINE	MANTEL	VAINA	GUAINA	VIPLAST L=1160 3 X6
31	17362	1	FAIR-LEAD	PASSAGE P.CABLE	KABELDURCHGANG	PASACABLE	PASSACAVO	D.25
32	29814	1	KNOB	POIGNEE	VERSTELLGRIFFF	MANOPLA	MANOPOLA	D. 22 L=124
33	29815	1	CONTROL LEVER	LEVIER CONTROLE	STEUERUNG HEBEL	PALANCA MANDO	LEVA COMANDO	D. 22 + Ø73.

TABLE N° :		DESCRIPTION :		SPARE PARTS LIST			DATE :	
07 01429 007		OVERALL TIGER 300S 500S					17.06.98	
REF. CODE KIT	QTY	DESCRIPTION	DENOMINATION	BESCHREIBUNG	DESCRIPCION	DESCRIZIONE	TECHNICAL FEATURES	NOTES
34	33115	1	INSTR.PANEL	TAB.DE BORD	ARM.BRETT	CRUSCOTTO	CRUSCOTTO	L.9000 - TIG. 2.V P9
35	36076	1	LABEL	ETICHETTE	STICHPETTE	ETIQUETA	ETICHETTA	TIG. 300/500 PLC
36	31306	1	KNOB	POIGNEE	VERSTELLGRIFFF	MANOPLA	MANOPOLA	D.22 SX TIGER 300
37	30802	1	CONTROL LEVER	LEVIER CONTROLE	STEUERUNG HEBEL	PALANCA MANDO	LEVA COMANDO	TIG.300
38	31163	1	BLACK BRAKE	SABOT DE FREIN	BREMSKLOTZE	CEPA FRENO	CEPPO FRENO	R D. 90-D.14 OX
39	34061	1	VIBRATION DAMP.	AMORTISSEUR	SCHWINGUNGSDAMP.	ANTIVIBRANTE	ANTIVIBRANTE	CL.25E17- 1HEX12 60SE NBR
40	29993	2	BUSHING	DOUILLE	BUCHE	MANGUITO	BUCOLA	D. 12E24-16 L=14 OT.
41	29987	1	BRAKE PEDAL	PEDALE FREIN	BREMSPEDAL	FEDAL FRENO	FEDALE FRENO	TIG.300
42	29988	1	PROTECTION	PROTECTION	SCHUTZ	PROTECCION	PROTEZIONE	TIG.300
43	34121	1	COWLING	COFFRE	HAUBE	COFIA	COFFIA	T 115
44	29992	1	CONTROL PIN	GOUJON CONTROLE	STEUERUNGZAPFEN	PERNO DE MANDO	PERNO COMANDO	TIG.300
45	29997	1	CONTROL ROD	TIGE D.CONTROLE	KONTROL. STANGE	VARILLA D.CONT.	ASTA COMANDO	L=660 M6
46	29999	1	CONTROL LEVER	LEVIER CONTROLE	STEUERUNG HEBEL	PALANCA MANDO	LEVA COMANDO	TIG.300
47	13590	1	CLAMP	BORNE	KLEMME	FRENS. SUJECION	MORSETTO	VT 8X11 M5 60LY 700
48	30016	1	CROSS PIECE	BARRE TRANSVER.	KREUZSTANGE	TRAVESANO	TRAVERSA	TIG.300
49	12055	2	SPRING	BESSORT	FEDER	MUELLE	MOLLA	TR144 D. 12 I41 P.1.5
50	12059	1	REGISTER	REGLEUR	KLAPPE	REGISTRO	REGISTRO	CH.12X 8MX40
51	38114	1	BLACK BRAKE	SABOT DE FREIN	BREMSKLOTZE	CEPA FRENO	CEPPO FRENO	R D. 90-D.20 P.OX T3
51	38115	1	BLACK BRAKE	SABOT DE FREIN	BREMSKLOTZE	CEPA FRENO	CEPPO FRENO	R D. 90-D.20 P.SX T3
52	29975	2	SPACER	ENTRETOISE	DISTANZSTUCK	SEPARADOR	DISTANZIALE	D. 25-21 L=52
53	29967	2	WHEEL	ROUE	LAUFRAD	RUEDA	RUOTA LIBERA	D. 13"X 5.00/ 6 PS. CR+TS TIGER 300
53	39072	2	WHEEL	ROUE	LAUFRAD	RUEDA	RUOTA LIBERA	D. 13"X 5.00/ 6 PS.CR.T50 TIGER 500
54	29973	2	SPACER	ENTRETOISE	DISTANZSTUCK	SEPARADOR	DISTANZIALE	D. 25-21 L=24
55	29977	2	WARP KNITTING	MAILLON CHAINE	MASCHE	ESLABON CADENA	MAGLIA CATENA	1/2X 1/8 S.
56	29976	1,360	CHAIN	CHAINE	KETTE	CADENA	CATENA	1/2X 1/8 S. 081 DIN 8187
57	29964	2	BALL BEARING	ROULEM.A BILLES	KUGELLAGER	COJINE.DE BOLAS	CUSCIN.A SFERE	6308-2RS1
58	29961	2	PINION	PIGNON	RITZEL	PINON	PIGNONE	2.12 P 1/2 X 1/8 S. TIG2 TIGER 300
58	38078	2	PINION	PIGNON	RITZEL	PINON	PIGNONE	2.12 P 1/2 X 1/8 S. . T5 TIGER 500
59	29962	2	PULLEY	POULIE	RIEMENSCHLEIBE	POLEA	PULEGGIA	HTD 72.ØM 15 TIGER 300
59	38077	2	PULLEY	POULIE	RIEMENSCHLEIBE	POLEA	PULEGGIA	HTD 72.ØM 25 D.16-35 TIGER 500

TABLE N° :
07 01429 007

DESCRIPTION :
OVERALL TIGER 300S 500S

EXPLODED VIEW

DATE :
17.06.98

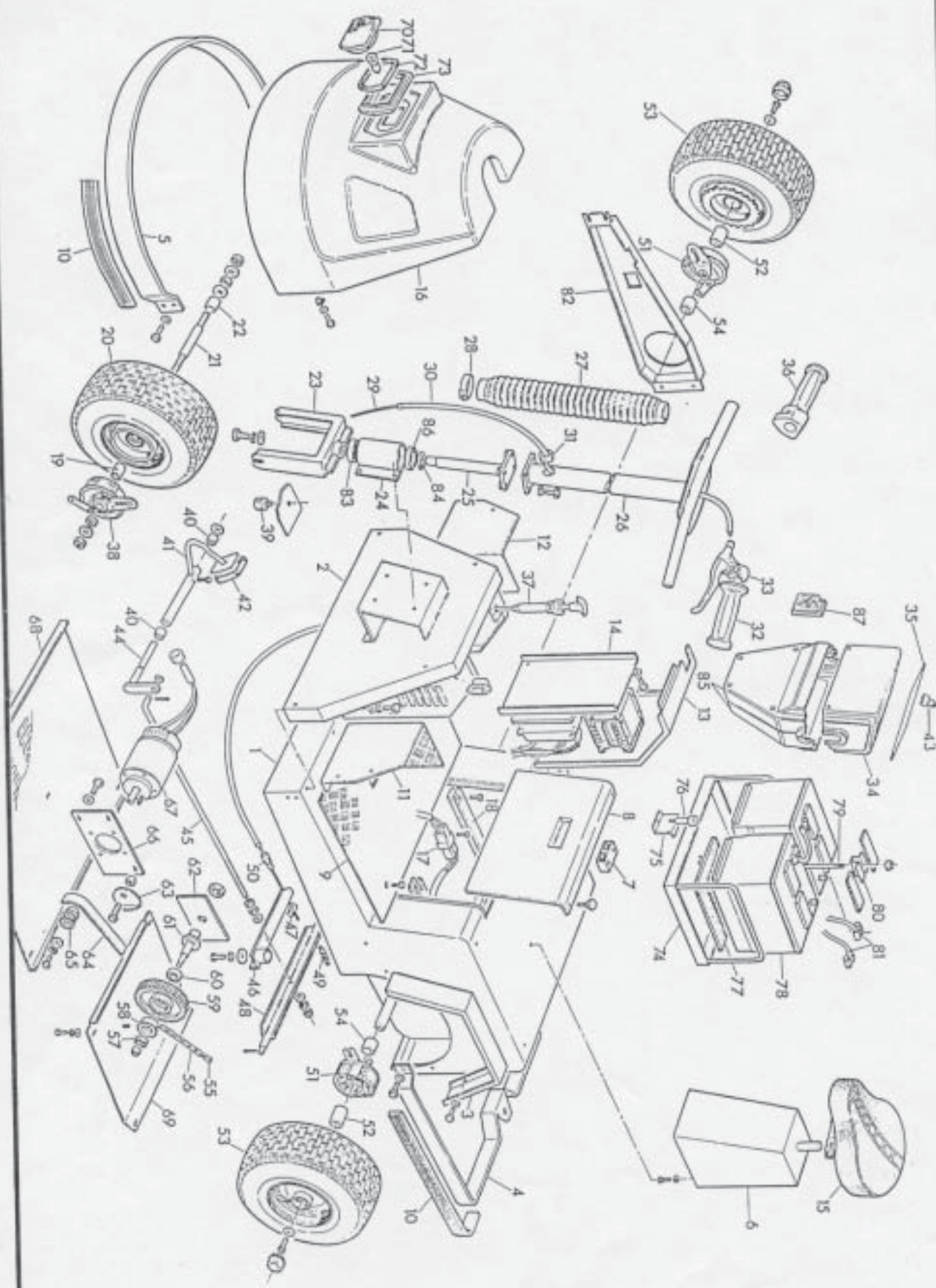


TABLE N° :
04 00088 008

DESCRIPTION :
TIG. 300S 230V 50/60HZ

EXPLODED VIEW

DATE :
17.06.98

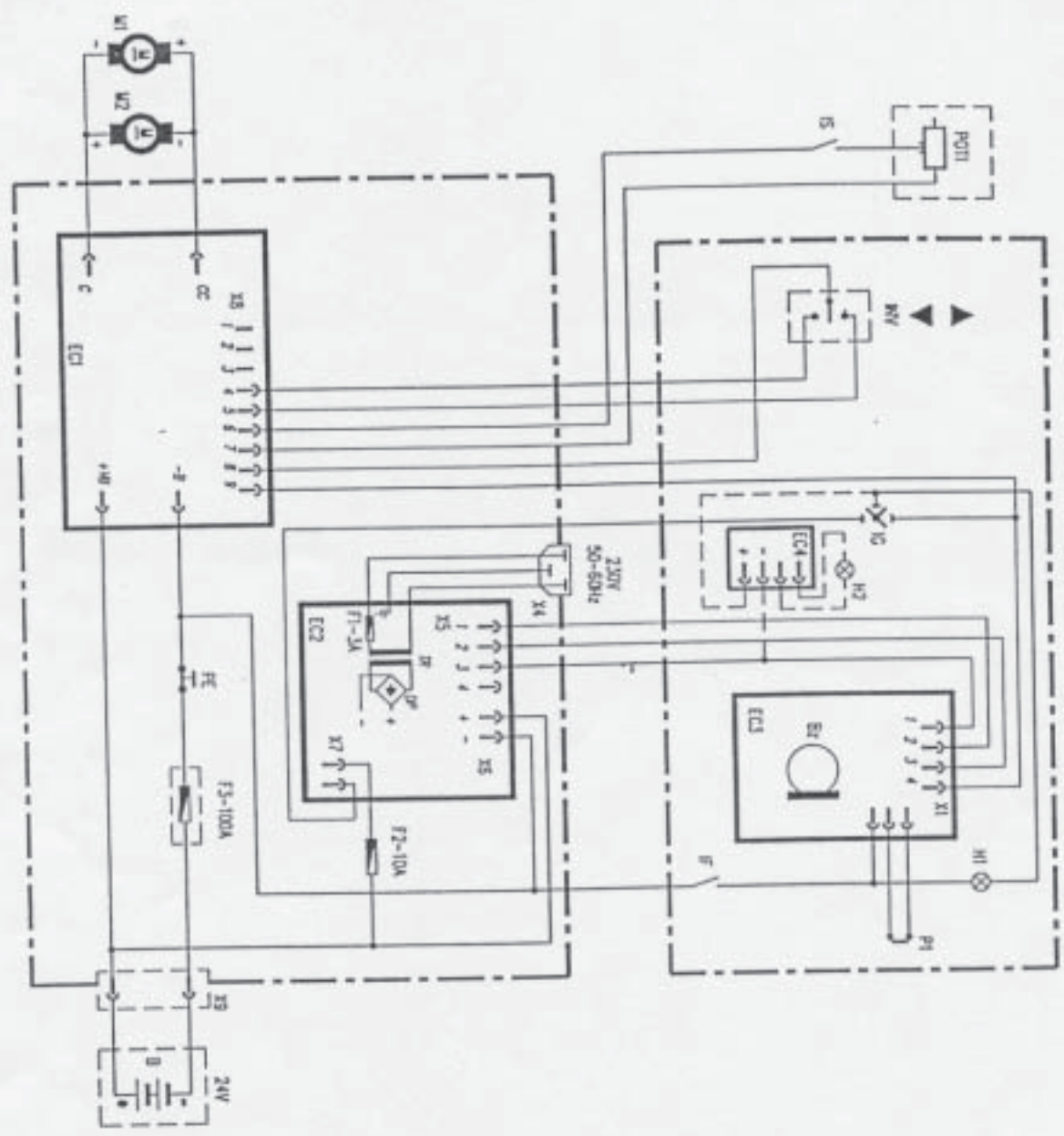


TABLE N° :		DESCRIPTION :		SPARE PARTS LIST			DATE :		
04 0008 008		TIG. 350S 230V 50/60HZ					17.06.98		
REF. CODE	KIT QTY	DESCRIPTION	DENOMINATION	BESCHREIBUNG	DESCRIPCION	DESCRIZIONE	TECHNICAL FEATURES	NOTES	
B	27034	2	BATTERY	BATTERIE	BATTERIE	PILETTA	BATTERIA	80 AH 12V 360A	OPTIONAL ACC.
M	30835	2	TRACTION MOTOR	MOTEUR TRACTION	TRAXTION MOTOR	MOTOR TRACCION	MOTORE TRAZIONE	CC MP 24V 250W 2800G+PL.	M1, M2
CB	30112	1	BATTERY-CHARGER	CHARGEUR BATT.	LADEGERAT	CARGADOR	CARICABATTERIA	TG.300 10A 24V	TR+ECC
F1	31305	1	FUSE	FUSIBLE	ABSCHMEL.HERUNG	FUSIBLE	FUSIBILE	3 A VL.	
F2	09008	1	FUSE	FUSIBLE	ABSCHMEL.HERUNG	FUSIBLE	FUSIBILE	10 A R35	
F3	32007	1	FUSE	FUSIBLE	ABSCHMEL.HERUNG	FUSIBLE	FUSIBILE	100 A	
H1	29510	1	LAMP	AMPOULE	LAMPE	LAMPARA	LAMPADA	24 V 70 W	
H2	30917	1	LAMP	AMPOULE	LAMPE	LAMPARA	LAMPADA	24V 10W SF.	
IF	30499	1	SWITCH	INTERRUPTEUR	SCHALTER	INTERRUPTOR	INTERUTTORE	T.303	
IG	30415	1	SWITCH	INTERRUPTEUR	SCHALTER	INTERRUPTOR	INTERUTTORE	SADI 8328	
IS	37826	1	BUTTON	INTERRUPTEUR	DRUCKKNOFF	PULSADOR	PULSANTE	ON-OFF INST. TIG.	
IE	32516	1	SWITCH	INTERRUPTEUR	SCHALTER	INTERRUPTOR	INTERUTTORE	25A CO80	
P1	30417	1	SWITCH	INTERRUPTEUR	SCHALTER	INTERRUPTOR	INTERUTTORE	0.15 TIG.	
EC1	30495	1	ELEC.CIRCUIT	CIRQUIT.ELECT.	ELEKTR.STROM.	CIRCUITO ELECT.	SCHEDA ELETTR.	PM01 115A 24V	
EC3	34007	1	ELEC.CIRCUIT	CIRQUIT.ELECT.	ELEKTR.STROM.	CIRCUITO ELECT.	SCHEDA ELETTR.	LED TIGER +85. 2.V	
EC4	30916	1	ELEC.CIRCUIT	CIRQUIT.ELECT.	ELEKTR.STROM.	CIRCUITO ELECT.	SCHEDA ELETTR.	INT. 12/24V 20W TIG	
INV	34120	1	SWITCH	DEVIATEUR	ABWEISER	DESVIADOR	DEVIATORE	T 115-EA	
PO1	21306	1	KNOB	POIGNEE	VERSTELLGRIFF	MANOPLA	MANOPOLA	D.22 DX TIGER 300	

MOTO 408 - D 1100 - 110

MOTO 408 - D 1100 - 110

MOTO 408 - D 1100 - 110

TABLE N° :		DESCRIPTION :		SPARE PARTS LIST			DATE :	
REF. CODE	KIT QTY	DESCRIPTION	DENOMINATION	BESCHREIBUNG	DESCRIPCION	DESCRIZIONE	TECHNICAL FEATURES	NOTES

Ref.	BESCHREIBUNG	DESCRIPTION	DESCRIPTION	DESCRIPTION	DENOMINACION	DESCR. IN
AD	FILTER	FILTERS	FILTRES	FILTROS	FILTRI	FILTRI
B	BATTERIE	BATTERY	BATTERIE	BATERIA	BATERIA	BATERIA
BAC	ZÜNDSPULE	IGNITION COIL	BOBINE D'ALLUMAGE	BOBINA DE ENCENDIDO	BOBINA DE ENCENDIDO	BOBINA DE ACCENSIONE
CHK	DREHSTROMGENERATOR	ALTERNATOR	ALTERNATEUR	ALTERNADOR	ALTERNADOR	ALTERNATORE
D	DIODE	DIODE	DIODE	DIODO	DIODO	DIODO
EC (1,2,3)	SCHALTUNG	ELECTRONIC CIRCUIT	CIRCUIT ELECTRONIQUE	CIRCUITO ELECTRICO	CIRCUITO ELECTRONICO	CIRCUITO ELETTRONICO
F (1,2...)	ABSCHMELZSICHERUNG	FUSE	FUSEE	FUSIBLE	FUSIBLE	FUSIBILE
H	LEUCHTLEUCHTER	HEADLIGHT	PHARE	PHARE	FARO	FARO
ID	AUSSCHALTER	STOPPING SWITCH	INTERRUPTEUR D'ARRIET	INTERRUPTOR DE PARO	INTERRUPTORE DI ARRESTO	INTERRUPTORE DI ARRESTO
IC	SCHLÜSSEL-SCHALTER	KEY SWITCH	INTERRUPTEUR CLE	INTERRUPTOR LLAVE	INTERRUPTORE CHIAVE	INTERRUPTORE CHIAVE
IF	BREMSSCHALTER	BRAKE SWITCH	INTERRUPTEUR FREIN	INTERRUPTOR FRENO	INTERRUPTORE FRENO	INTERRUPTORE FRENO
IH	LEUCHTELEUCHTER	HEADLIGHT SWITCH	INTERRUPTEUR PHARE	INTERRUPTOR FARO	INTERRUPTORE FARO	INTERRUPTORE FARO
IILC	LADUNGSANZEIGER	CHARGE LEVEL INDICATOR	INDICATEUR DU NIVEAU DE CHARGE	INDICADOR NIVEL CARGA	INDICATORE LIVELLO CARICA	INDICATORE LIVELLO CARICA
ILO	ÖLSTANDSCHALTER	OIL LEVEL SWITCH	INTERRUPTEUR DE NIVEAU HUILE	INTERRUPTOR NIVEL ACEITE	INTERRUPTORE LIVELLO OLIO	INTERRUPTORE LIVELLO OLIO
INV	FAHRTWENDELER	REVERSING SWITCH	INVERSEUR DE MARCHIE	INTERRUPTOR DE MARCHA	INVERTITORE DI MARCIA	INVERTITORE DI MARCIA
IS	SCHUTZSCHALTER	CIRCUIT BREAKER	INTERRUPTEUR DE SURETE	INTERRUPTOR DE SEGURIDAD	INTERRUPTORE SICUREZZA	INTERRUPTORE SICUREZZA
ISF	FILTERSCHÜTTLERUNG-SCHALTER	FILTERSHAKER SWITCH	INTERRUPTEUR AGITE-FILTRE	INTERRUPTOR SACUDE FILTRO	INTERRUPTORE SCUOTIFILTRO	INTERRUPTORE SCUOTIFILTRO
ISS	SITZSICHERUNGSSCHALTER	SEAT SAFETY SWITCH	INTERRUPTEUR SURETE SEGE	INTERR. DE SEGURIDAD DEL ASIENTO	INTERRUPTORE SICUREZZA SEDILE	INTERRUPTORE SICUREZZA SEDILE
KL	KLAXON	HORN PUSH BUTTON	CLACSON	BOCINA	CLACSON	CLACSON
L	BLINKLEUCHE	FLASHING LIGHT	FELI CLIGNOTANT	INTERMITTENTE	LAMPEGGIANTE	LAMPEGGIANTE
LS	SIGNALLAMPE	PILOT LAMP	LAMPE TEMOIN	LUZ	LAMPADA SPA	LAMPADA SPA
M	MOTOR	MOTOR	MOTEUR	MOTOR	MOTORE	MOTORE
MA	ANLAUFMOTOR	STARTING MOTOR	MOTEUR DE DEMARRAGE	MOTOR DE ARRANQUE	MOTORE AVVIAMENTO	MOTORE AVVIAMENTO
PC	LADEGERÄT-STECKDOSE	BATTERY CHARGER SOCKET	PRISE CHARGEUR DE BATTERIE	TOMA DE CARGA BATERIA	PRESA CARICABATTERIE	PRESA CARICABATTERIE
PE	NOT-AUSSCHALTER	EMERGENCY SWITCH	INTERRUPTEUR D'EMERGENCE	INTERRUPTOR DE EMERGENCIA	INTERRUPTORE EMERGENZA	INTERRUPTORE EMERGENZA
PKL	KLAXON-DRUCKKNOPF	HORN BUTTON	BOUTON CLACSON	BOTON BOCINA	PULSANTE CLACSON	PULSANTE CLACSON
POT	BESCHLEUNIGER	ACCELERATOR	ACCELERATEUR	ACELERADOR	ACCELERATORE	ACCELERATORE
PS	STOPFASTE	SWITCHIN G OFF PUSH BUTTON	BOUTON EXTINCTION	BOTON DE PARO	PULSANTE SPEGNIMENTO	PULSANTE SPEGNIMENTO
RL	RELAIS	RELAY	RELAIS	RELE	RELE	RELE
RLR	ZEITGEBER	TIMER	TEMPORISATEUR	TIMER	TIMER	TIMER
SF	FILTERSCHÜTTLERUNG	FILTERSHAKER	AGITE-FILTRE	SACUDE FILTRO	SCUOTIFILTRO	SCUOTIFILTRO
SP	ZÜNDKERZE	SPARK PLUG	BOUGIE	BUJIA	CANDELA	CANDELA
STB	LADUNGSREGLER	CHARGE REGULATOR	REGULATEUR CHARGE	REGULATOR DE CARGA	REGOLATORE DI CARICA	REGOLATORE DI CARICA
TR	TRANSFORMATOR	TRANSFORMER	TRANSFORMATEUR	TRANSFORMADOR	TRASFORMATORE	TRASFORMATORE

TABLE N° :
04 00418 005

DESCRIPTION :
TIG, 500S 230V 50/60HZ

EXPLODED VIEW

DATE :
17.06.98

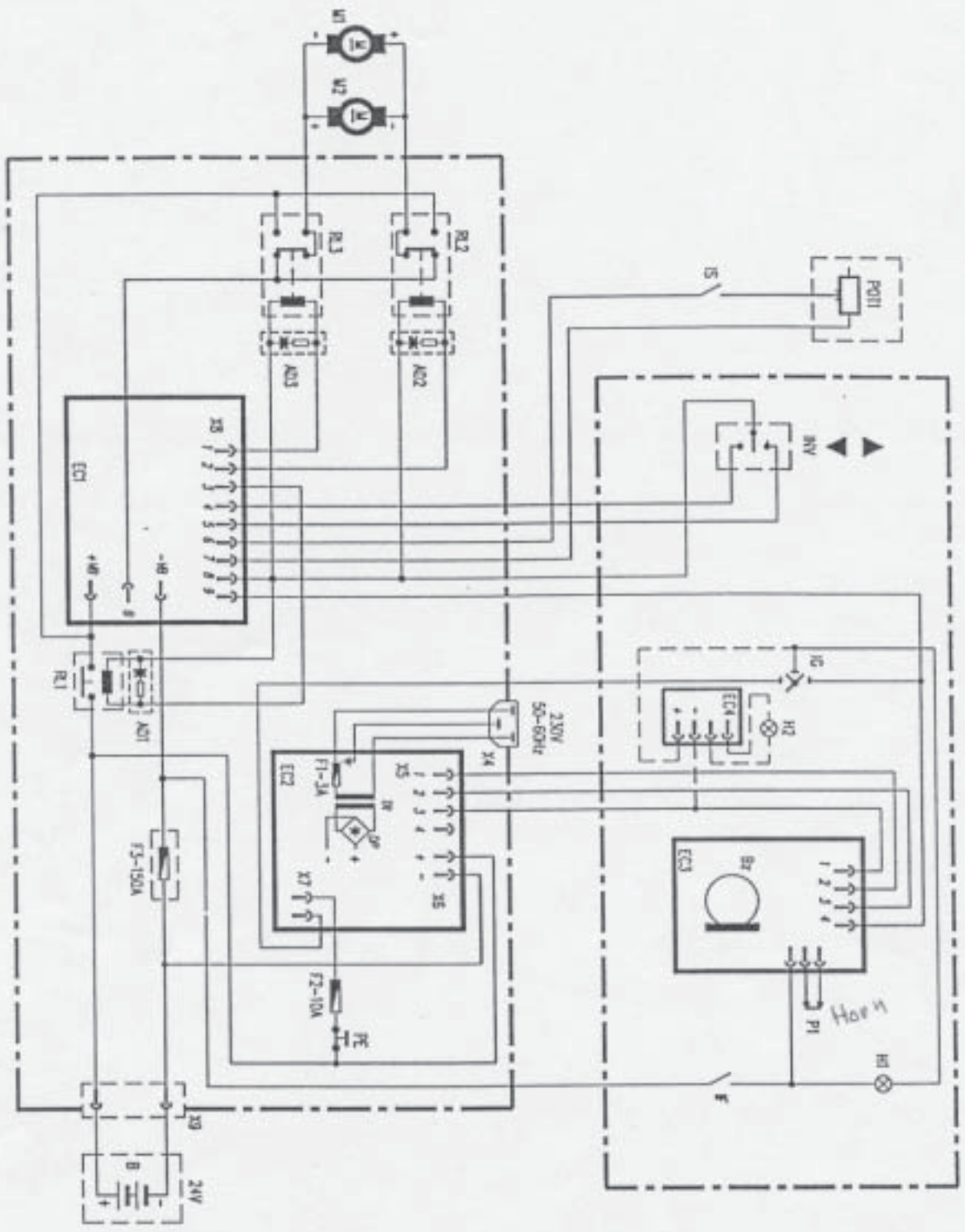


TABLE N° :		DESCRIPTION :		SPARE PARTS LIST				DATE :	
04 00418 005		TIG. 5005 230V 50/60HZ						17.06.98	
REF. CODE	KIT	Q.TY	DESCRIPTION	DENOMINATION	BESCHREIBUNG	DESCRIPCION	DESCRIZIONE	TECHNICAL FEATURES	NOTES
B	27034	2	BATTERY	BATTERIE	BATTERIE	PILETTA	BATTERIA	80 AH 12V 360A	OPTIONAL ACC.
M	38391	2	TRACTION MOTOR	MOTEUR TRACTION	TRAKTION MOTOR	MOTOR TRACCION	MOTORE TRAZIONE	CC MP 24V 400W 2800G+PL.	M1, M2
CB	30112	1	BATTERY-CHARGER	CHARGEUR BATT.	LADGERAT	CARGADOR	CARICABATTERIA	TG.300 10A 24V	TR+EC2
FL	31185	1	FUSE	FUSIBLE	ABSCHMEL.HERUNG	FUSIBLE	FUSIBILE	3 A VL.	
F2	09008	1	FUSE	FUSIBLE	ABSCHMEL.HERUNG	FUSIBLE	FUSIBILE	10 A R15	
H1	29910	1	LAMP	AMPOULE	LAMPE	LAMPARA	LAMPADA	24 V 70 W	
H2	38917	1	LAMP	AMPOULE	LAMPE	LAMPARA	LAMPADA	24V 10W SF.	
IF	30499	1	SWITCH	INTERRUPTEUR	SCHALTER	INTERRUPTOR	INTERRUTTORE	T.300	
IG	30416	1	SWITCH	INTERRUPTEUR	SCHALTER	INTERRUPTOR	INTERRUTTORE	ZADI 8128	
IS	37826	1	BUTTON	INTERRUPTEUR	DRUCKKNOPF	PULSADOR	PULSANTE	ON-OFF INST. TIG.	
PE	32516	1	SWITCH	INTERRUPTEUR	SCHALTER	INTERRUPTOR	INTERRUTTORE	25A COB0	
PJ	30417	1	SWITCH	INTERRUPTEUR	SCHALTER	INTERRUPTOR	INTERRUTTORE	D.15 TIG.	
NL	36723	2	CONTACTOR	TELEUPTEUR	FERNSCHALTER	CONTACTOR	TELERUTTORE	MAC 15 R 24V DC 6.1.	RL2, RL3
EC1	35742	1	ELEC.CIRCUIT	CIRQUIT.ELECT.	ELEKTR.STROM.	CIRCUITO ELECT.	SCHEDA ELETTR.	FM04 150A 24V	
EC3	34807	1	ELEC.CIRCUIT	CIRQUIT.ELECT.	ELEKTR.STROM.	CIRCUITO ELECT.	SCHEDA ELETTR.	LED TIGER +SE. 2.V	
EC4	38916	1	ELEC.CIRCUIT	CIRQUIT.ELECT.	ELEKTR.STROM.	CIRCUITO ELECT.	SCHEDA ELETTR.	INT. 12/24V 20W TIG	
INV	34120	1	SWITCH	DEVIATEUR	ARWEISER	DESVIADOR	DEVIATORE	T 115-BA	
PO1	11306	1	KNOB	POIGNEE	VERSTELLGRIFF	MANOPLA	MANOPOLA	D.22 0X TIGER 300	
RL1	36724	1	CONTACTOR	TELEUPTEUR	FERNSCHALTER	CONTACTOR	TELERUTTORE	MAC 15 D 24V DC 6.C.	

TABLE N° :		DESCRIPTION :		SPARE PARTS LIST				DATE :	
REF. CODE	KIT	Q.TY	DESCRIPTION	DENOMINATION	BESCHREIBUNG	DESCRIPCION	DESCRIZIONE	TECHNICAL FEATURES	NOTES